

# ALEUROCANTHUS CAMELLIAE KANMIYA & KASAI, 2011 (HEMIPTERA: ALEYRODIDAE), A NEWLY INTERCEPTED WHITEFLY SPECIES IN CROATIA

MLADEN ŠIMALA<sup>1\*</sup>, MAJA PINTAR<sup>1</sup> & VJEKOSLAV MARKOTIĆ<sup>1</sup>

<sup>1</sup>Hrvatska agencija za poljoprivredu i hranu, Centar za zaštitu bilja, Gorice 68b, 10000 Zagreb

Šimala, M., Pintar, M. & Markotić, V.: *Aleurocanthus camelliae* Kanmiya & Kasai, 2011 (Hemiptera: Aleyrodidae), a newly intercepted whitefly species in Croatia. *Nat. Croat.*, Vol. 32, No. 2, 431-437, Zagreb, 2023.

The Camellia spiny whitefly *Aleurocanthus camelliae* Kanmiya & Kasai, 2011 (Hemiptera: Aleyrodidae) was intercepted for the first time during 2022 in consignments with ornamental *Camellia* spp. seedlings originating from Italy, in seven plant nurseries and garden centres in Croatia. This Eastern Palearctic whitefly species is an important pest, especially in tea cultivation of East Asia. However, in Croatia the species has been detected at very low population densities without any significant damage to the infested ornamental plants of the genus *Camellia* L. From the infested leaves collected on each location, whitefly puparia and pupal cases were slide-mounted and morphologically identified in laboratory as the species *A. camelliae*. It is assumed that in the case of spreading and domestication in Croatia, *A. camelliae* could potentially present a phytosanitary risk for the camellias planted in gardens and parks in the Kvarner area.

**Key words:** Aleyrodidae, *Aleurocanthus camelliae*, camellia, interception, Croatia

Šimala, M., Pintar, M. & Markotić, V.: Prvi nalaz *Aleurocanthus camelliae* Kanmiya & Kasai, 2011 (Hemiptera: Aleyrodidae), nove vrste štitastog moljca u Hrvatskoj. *Nat. Croat.*, Vol. 32, No. 2, 431-437, Zagreb, 2023.

Kamelijin trnoviti štitasti moljac *Aleurocanthus camelliae* Kanmiya & Kasai, 2011 (Hemiptera: Aleyrodidae) je po prvi put nađen tijekom 2022. u pošiljkama sadnica ukrasnih vrsta *Camellia* spp. podrijetlom iz Italije u sedam rasadnika bilja i vrtnih centara u Hrvatskoj. Ova istočno-palearktička vrsta štitastog moljca je važan štetnik kultiviranog bilja, posebice u plantažama čaja na istoku Azije. U Hrvatskoj je vrsta zabilježena u vrlo niskoj gustoći populacije, bez značajnih šteta na napadnutim ukrasnim biljnim vrstama iz roda *Camellia* L. Pupariji i egzuviji štitastog moljca na prikupljenim napadnutim listovima sa svakog lokaliteta su preparirani i morfološki određeni u laboratoriju kao vrsta *A. camelliae*. Pretpostavlja se da bi u slučaju širenja i udomaćenja, vrsta *A. camelliae* mogla potencijalno predstavljati fitosanitarni rizik za kamelije posađene na okućnicama i u parkovima na području Kvarnera.

**Ključne riječi:** Aleyrodidae, *Aleurocanthus camelliae*, kamelija, prvi unos, Hrvatska

## INTRODUCTION

The hemipteran insect group of Aleyrodidae (commonly known as whiteflies) includes 1556 described species placed in 161 genera (MARTIN & MOUND, 2007). Aleyrodidae cause damage to plants directly by sucking sap and indirectly by transmitting plant viruses and excreting honeydew, which coats above-ground plant organs and leads to mould infection. The taxonomy of the group and the identification of the species is

\*Corresponding author: mladen.simala@hapih.hr

mainly based on the morphology of the fourth larval instar called “puparium”. The paleotropical genus *Aleurocanthus* Quaintance & Baker, 1924 comprises 91 described species world-wide, feeding on both monocotyledonous and dicotyledonous host plants (OUVRARD & MARTIN, 2022). Only two species occur in Europe, *Aleurocanthus spiniferus* (Quaintance, 1903) and *Aleurocanthus camelliae* KANMIYA & KASAI, 2011. *A. spiniferus* originated in tropical Asia and has spread to Africa, Australia and the Pacific islands. In the EU the species has the status of a quarantine harmful organism. In Europe, it was reported for the first time in Italy (PORCELLI, 2008). Since then it has been reported from Croatia, Greece, Montenegro and Albania (EPPO, 2022). In Croatia, it was first intercepted and eradicated in 2012 (ŠIMALA & MASTEN MILEK, 2013), and then found again in 2018 in a mandarin orange orchard and on surrounding wild flora along the southernmost coast of the country (ŠIMALA et al., 2019). For the last five years the pest has continued to spread through the area of Konavle, on the islands of Hvar and Brač, as well as in surroundings of Dubrovnik and Makarska (ŠIMALA & AL., 2020). As a new member of the Croatian fauna, this invasive pest presents a high phytosanitary risk to various agricultural crops, in particular to citrus orchards in the Neretva valley. *A. spiniferus* is highly polyphagous insect that feeds on members of at least 38 plant families, with a preference for host plants from genera *Citrus* L., *Pyrus* L. and *Vitis* L. (CIOFFI & al., 2013).

Species *A. camelliae* is probably native to China, and from there it was likely introduced into Japan and Indonesia. Apart from in these East Asian countries, *A. camelliae* has until now only been recorded in the Netherlands (JANSEN & PORCELLI, 2008) and in 2020 in Italy (RIZZO & al., 2021). This species is recorded from plants of the genera *Camellia* L., *Cleyera* Thunb., *Eurya* Thunb., *Illicium* L. and *Zanthoxylum* L. It is an important pest of tea plants (*Camellia sinensis* (L.) Kuntze) in East Asia (RIZZO & al., 2021). Since *A. camelliae* is a new whitefly species for the entomofauna of Croatia, in this publication we are providing a morphological description of the puparium as seen in the field and under a microscope, with original photos. There is also discussion regarding its distinction from the morphologically closely related species *A. spiniferus*, as well as the possibility of its domestication and potential phytosanitary risk for ornamental camellias.

## MATERIALS AND METHODS

During visual surveys of camellia plants in plant nurseries and garden centres in Croatia in 2022, dark whitefly larvae were observed on the lower surfaces of inspected leaves. The leaf samples with preimaginal whitefly stages, collected on each location, were placed and stored dry in envelopes until laboratory analysis (MARTIN, 1987). In the laboratory, whitefly puparia and pupal cases were picked from the leaves with an entomological needle, bleached in a freshly prepared mixture of 30 % hydrogen peroxide and 30 % ammonium solution, placed in clove oil for about 15 minutes and finally slide-mounted in diluted Canada balsam as permanent microscopic slides, according to a modified method by WATSON & CHANDLER (1999). Bleaching was stopped when black cuticle of puparia/pupal cases became brown and translucent by adding of a few drops of glacial acetic acid. Collected specimens of whiteflies were identified to the species level on the basis of morphological characters of puparium and/or pupal case according to keys provided by KANMIYA & AL. (2011) and by JANSEN & PORCELLI (2018). For an accurate identification, a binocular dissecting microscope Olympus SZX

7 equipped with Olympus LC 20 digital camera and optical microscope Olympus BX 51 equipped with Olympus DP 25 digital camera were used. Confirmation of identification of whitefly species was done by specialists from Netherlands Institute for Vectors, Invasive plants and Plant health, Netherlands Food and Consumer Product Safety Authority National Reference Centre, Wageningen, The Netherlands. Slide-mounted specimens were deposited, after drying for about two months, in the collection of the Laboratory for zoology of the Centre for Plant Protection – CAAF.

## RESULTS AND DISCUSSION

Infested leaves with specimens of *A. camelliae* were collected from potted camelias grown outdoors and in greenhouses in seven nurseries and garden centres in five counties (Fig. 1) during regular phytosanitary inspection of plant material as a part of a national survey of quarantine species: *Aleurocanthus woglumi* Ashby, 1915, *Aleurocanthus citriperdus* Quaintance & Baker, 1916 and *A. spiniferus*.

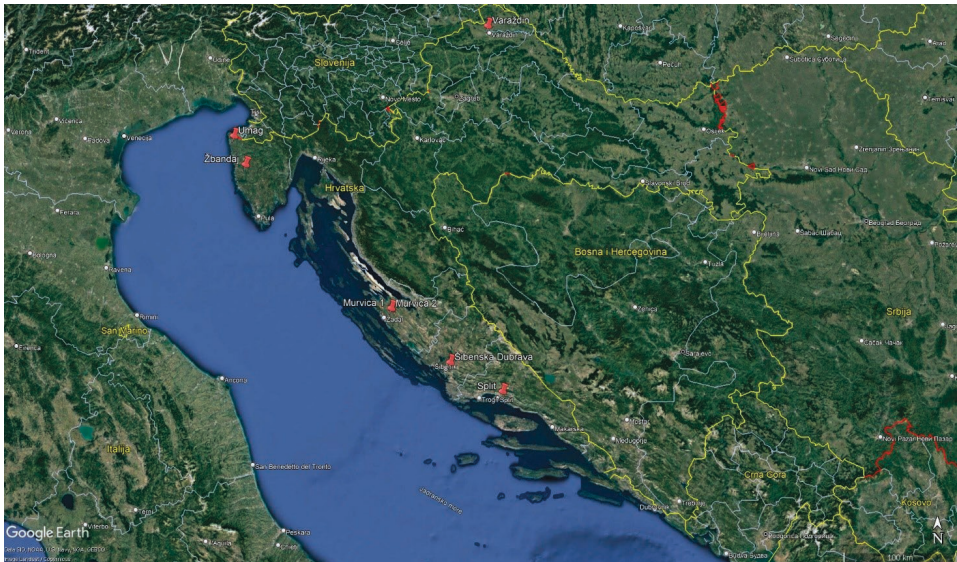


Fig. 1. Localities where the species *Aleurocanthus camelliae* was recorded (red marks) (Google Earth).

The whitefly infestation of camellia plants was generally sparse. Infested plants did not show any significant damage. Only preimaginal stages of this whitefly species, scattered sporadically or as small colonies on the lower surface of a few leaves per plant, were observed (Fig. 2).

Some of the collected puparia were parasitized by an unknown species of endoparasitoid wasp, showing the typical round emergence hole of an adult parasitoid. A very obscure amount of sooty mould, as a consequence of low whitefly infestation, was present on camellia plants. Not one adult *A. camelliae* was detected on any inspected plants. Adults of this species are dark, contrary to the vast majority of whitefly species whose adults are typically white. Infested seedlings of camelias on all localities (Tab. 1) were delivered from Italy, where the pest was reported for the first

time in 2020 (Rizzo *et al.*, 2021). Since *A. camelliae* is a non-regulated pest, no specific phytosanitary measures have been undertaken by importers of consignments of the infested plants.

Puparia of the genus *Aleurocanthus* are readily recognised by the presence of many stout conspicuous spines on the dorsal disc and submargin, the white marginal waxy fringes and the carriage of exuviae of earlier instars in a stack on the dorsum (Fig. 3). They are often sexually dimorphic, with male puparia much smaller than female. Their cuticle is usually dark, but in some species is pale (MARTIN, 1999; DUBEY & KO, 2012).

**Tab. 1.** Faunistic data for findings of species *Aleurocanthus camelliae*.

| County         | Locality (Geographic position)                   | Plant species                      | Plant family | Date of sampling |
|----------------|--|------------------------------------|--------------|------------------|
| Zadar          | Murvica 1<br>(44°8'28.10"N 15°18'50.34"E)        | <i>Camellia japonica</i> L.        | Theaceae     | 18.7.2022.       |
|                | Murvica 2<br>(44°8'12.45"N 15°18'51.65"E)        | <i>Camellia sasanqua</i><br>Thunb. | Theaceae     | 18.10.2022.      |
| Varaždin       | Varaždin<br>(46°18'39.47"N 16°19'35.32"E)        | <i>Camellia japonica</i> L.        | Theaceae     | 29.7.2022.       |
| Split-Dalmatia | Split<br>(43°30'57.1"N 16°30'8.20"E)             | <i>Camellia japonica</i> L.        | Theaceae     | 19.10.2022.      |
| Šibenik-Knin   | Šibenska Dubrava<br>(43°44'6.22"N 15°56'49.31"E) | <i>Camellia japonica</i> L.        | Theaceae     | 20.10.2022.      |
| Istra          | Žbandaj<br>(45°12'35.8"N 13°41'32.4"E)           | <i>Camellia japonica</i> L.        | Theaceae     | 14.11.2022.      |
|                | Umag<br>(45°25'34.7"N 13°33'0.05"E)              | <i>Camellia japonica</i> L.        | Theaceae     | 14.11.2022.      |



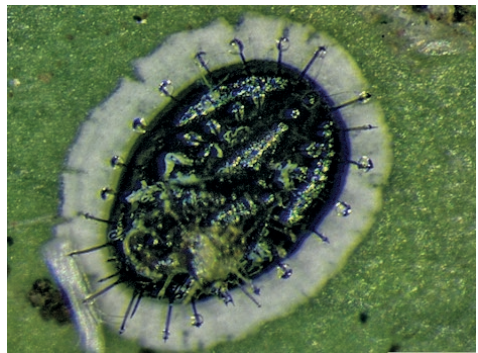
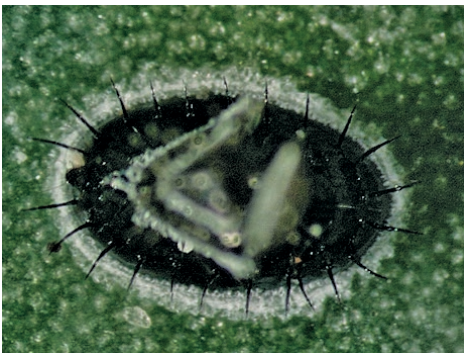
**Fig. 2.** *Aleurocanthus camelliae* larvae on the underside of *Camellia japonica* leaf (Photo by M. Pintar).



**Fig. 3.** Exuviae of the 2<sup>nd</sup> and 3<sup>rd</sup> larval instars attached to puparium of *Aleurocanthus camelliae* (Photo by M. Šimala).

*A. camelliae* is a cryptic species complex, morphologically near to *A. spiniferus*, described recently from Japan (KANMIYA *et al.*, 2011; ANDRIANTO & KASAI, 2022). Puparia of these two related species present in Europe are very similar in appearance in the field and microscopically. In the field, metallic black puparia of *A. camelliae*, fixed on the underside of leaves, are slightly smaller and narrower than *A. spiniferus*, with the white marginal wax fringe less developed and narrower (Fig. 4 and 5). However, the most significant difference is in the host plant acceptance, especially regarding citrus fruits. *Citrus* species are one of the preferred host plants for *A. spiniferus*, while *A. camelliae* prefers mostly plants from the family Theaceae and does not inhabit *Citrus* plants (Rutaceae). Nevertheless, according to KANMIYA *et al.* (2011), adult females of *A. camelliae* could lay eggs on citrus leaves, but larvae do not finish their development. This scientific knowledge is important for citrus fruit growers in Croatia, especially in the Neretva valley.

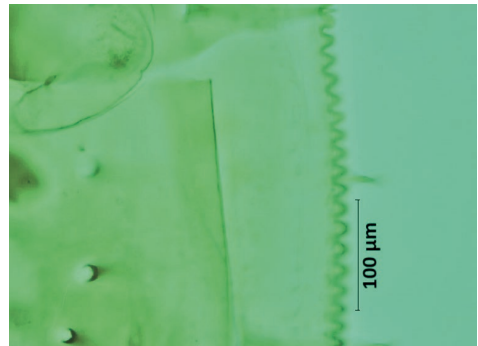
Based on the literature description (KANMIYA *et al.*, 2011; WANG *et al.*, 2014; JANSEN & PORCELLI, 2018) and our own microscopic observations, the main morphological characters of *A. camelliae* puparium (Fig. 6) are: length 0,98-1,23 mm in female and 0,65-0,85 mm in male, width 0,62-0,85 mm in female and 0,39-0,57 mm in male; cephalic eyespot ovoid, clearly defined with a distinct rim, located laterally and very close to the base



**Figs. 4 and 5.** Puparium of *Aleurocanthus camelliae* (left) and *Aleurocanthus spiniferus* (right) (Photo by M. Šimala).

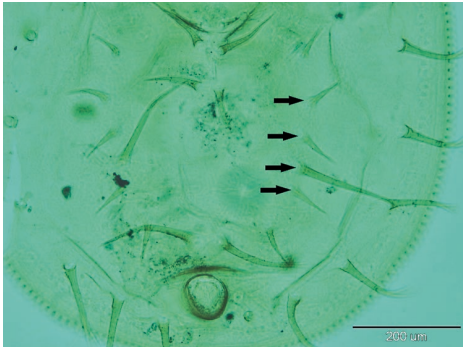


**Fig. 6.** Microscopic slide of *Aleurocanthus camelliae* puparium (arrows indicate cephalic eyespot) (Photo by M. Šimala).

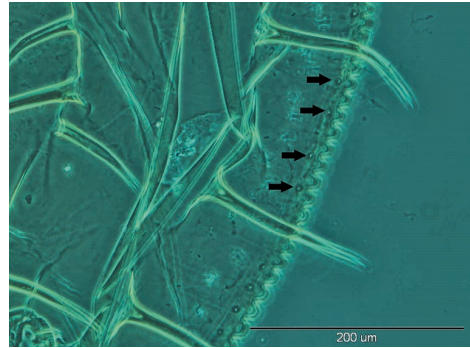


**Fig. 7.** Marginal teeth of *Aleurocanthus camelliae* puparium (Photo by M. Šimala).

of 3<sup>rd</sup> submarginal spine (Fig. 6); margin crenulated with 6-8 marginal teeth/100  $\mu\text{m}$  (female) or 7-10 marginal teeth/100  $\mu\text{m}$  (male) (Fig. 7); longitudinal and transverse moulting sutures reach the margin; cephalic, 8<sup>th</sup> abdominal and caudal setae present; 10-11 pairs of long glandular spines along the submargin, 16 pairs on the subdorsum (9 pairs in the cephalothorax and 7 pairs in the abdomen) and 3 pairs on the submedian part of abdominal segments I-III; sockets of 2<sup>nd</sup> to 5<sup>th</sup> submedian abdominal spines lined up roughly linearly (Fig. 8); 3-5 microscopic papillae lined outside submarginal spines between each two spines (Fig. 9); vasiform orifice distinctly elevated, obtuse, subcordate, fully occupied by the similarly shaped operculum, which conceals the lingua. The most noticeable microscopic diagnostic characters used to distinguish puparia of the species *A. camelliae* and *A. spiniferus* morphologically are position of cephalic eye spot, margin crenulation, arrangement of submedian abdominal spines and position of microscopic papillae on submargin.



**Fig. 8.** Submedian abdominal spines on *Aleurocanthus camelliae* puparium (arrows indicate 2<sup>nd</sup> to 5<sup>th</sup> submedian abdominal spines) (Photo by M. Šimala).



**Fig. 9.** Microscopic papillae on submargin of *Aleurocanthus camelliae* puparium (phase contrast) (Photo by M. Šimala).

Since adults of *A. camelliae*, like all whiteflies, cannot fly long distances, international trade and movement of their host plants is the main pathway for their spread. Worldwide dispersion of *A. camelliae* is strongly associated with mobility of plants from the family Theaceae through human activities, such as global trade of *C. sinensis*, *Camellia japonica* L., *Camellia sasanqua* Thunb. and *Eurya japonica* Thunb. (ANDRIANTO & KASAI, 2022). Therefore, it is not surprising that *A. camelliae* was intercepted in Croatia, since large quantities of planting material are imported from Italy, where the pest was detected in 2020 (RIZZO *et al.*, 2021). The persistence of *A. camelliae* outdoors in Pistoia province (Tuscany), implies that the species could also survive in the similar climatic conditions of Croatia. In this case, the pest could also be transferred on infested seedlings and spread from nurseries to public greenery, parks and private gardens, especially in the Kvarner area, where camellia is one of the most recognizable botanical symbols of the destination, and could consequently cause some minor damage to the plants.

## ACKNOWLEDGMENTS

Thanks are due to colleagues M. G. M. Jansen and L. Alferink from Netherlands Institute for Vectors, Invasive plants and Plant health, Netherlands Food and Consumer

Product Safety Authority National Reference Centre, Wageningen, The Netherlands for the confirmation of identification of species *A. camelliae*.

Received March 21, 2023

## REFERENCES

- ANDRIANTO, E. & KASAI, A., 2022: *Wolbachia* in Black Spiny Whiteflies and Their New Parasitoid Wasp in Japan: Evidence of the Distinct Infection Status on *Aleurocanthus camelliae* Cryptic Species Complex. *Insects* **13**(9), 788. <https://doi.org/10.3390/insects13090788>
- CIOFFI, M., CORNARA, D., CORRADO, I., JANSEN, M. G. M. & PORCELLI, F., 2013: The status of *Aleurocanthus spiniferus* from its unwanted introduction in Italy to date. *Bulletin of Insectology* **66**(2), 273-281.
- DUBEY, A. K. & KO, C. C., 2012: Sexual dimorphism among species of *Aleurocanthus* Quaintance & Baker (Hemiptera: Aleyrodidae) in Taiwan, with one new species and an identification key. *Zootaxa* **3177**, 1-23.
- EPPO, 2022: PM 7/007 (2) *Aleurocanthus citriperdus*, *Aleurocanthus spiniferus*, and *Aleurocanthus woglumi*. *EPPO Bulletin* **52**, 346-361. <https://doi.org/10.1111/epp.12855>
- JANSEN, M. & PORCELLI, F., 2018: *Aleurocanthus camelliae* (Hemiptera: Aleyrodidae), a species possibly new for the European fauna of a genus in great need of revision. *Tijdschrift voor Entomologie* **161**, 63-78.
- KANMIYA, K., UEDA, S., KASAI, A., YAMASHITA, K., SATO, Y. & YOSHIYASU, Y., 2011: Proposal of new specific status for tea-infesting populations of the nominal citrus spiny whitefly *Aleurocanthus spiniferus* (Homoptera: Aleyrodidae). *Zootaxa* **2797**, 25-44.
- MARTIN, J. H., 1987: An identification guide to common whitefly pest species of the world (Homoptera, Aleyrodidae). *Tropical Pest Management* **33**(4), 298-322.
- MARTIN, J. H., 1999: The whitefly fauna of Australia (Sternorrhyncha: Aleyrodidae). A taxonomic account and identification guide. *CSIRO, Entomology Technical Paper* **38**, 1-197.
- MARTIN, J. H. & MOUND, L. A., 2007: An annotated check list of the world's whiteflies (Insecta: Hemiptera: Aleyrodidae). *Zootaxa* **1492**, 1-84.
- OUVARD D. & MARTIN J. H., 2022: The White-flies – Taxonomic checklist of the world's whiteflies (Insecta: Hemiptera: Aleyrodidae). <https://doi.org/10.5519/0095728>
- PORCELLI, F., 2008: First record of *Aleurocanthus spiniferus* (Homoptera: Aleyrodidae) in Apulia, Southern Italy. *Bulletin OEPP/EPPO Bulletin* **38**, 516-518.
- RIZZO, D., SUMA, P., ROSSI, E., FARINA, P., DA LIO, D., BARTOLINI, L., SALEMI, C., FARINA, A. & RAPISARDA, C., 2021: First record of *Aleurocanthus camelliae* Kanmiya & Kasai, 2011 (Hemiptera, Aleyrodidae) from Italy, on ornamental *Camellia* spp. plants. *EPPO Bulletin* **51**, 333-339. <https://doi.org/10.1111/epp.12760>
- ŠIMALA, M. & MASTEN MILEK, T., 2013: First record of the orange spiny whitefly, *Aleurocanthus spiniferus* Quaintance, 1903 (Hemiptera: Aleyrodidae) in Croatia. *Zbornik predavanj in referatov II. Slovenskega posvetovanja o varstvu rastlin z mednarodno udeležbo* (in okroglo mize o zmanjšanju tveganja zaradi rabe FFS v okviru projekta CropSustain), Bled, 5-6. Marec 2013, 354-358.
- ŠIMALA, M., PINTAR, M., MASTEN MILEK, T., MARKOTIĆ, V., KAJIĆ, Z., KOTLAR, A. & PALADIN, I., 2019: Narančin trnoviti štitasti moljac – opasan invazivni štetnik. *Glasilo biljne zaštite* **19**(6), 640-648.
- ŠIMALA, M., PINTAR, M., MASTEN MILEK, T., MARKOTIĆ, V., ARNAUT, P., KAJIĆ, Z., MARUŠIĆ, S., KOTLAR, A. & PALADIN SOČE, I., 2020: Fauna štitastih moljaca (Hemiptera: Aleyrodidae) u nasadima agruma. *Fragm. Phytom.* **34**(5), 1-14.
- WANG, J.R., SONG, Z.Q. & DU, Y.Z., 2014: Six new record species of whiteflies (Hemiptera: Aleyrodidae) infesting *Morus alba* in China. *J. Insect Sci.* **14**, 274.
- WATSON, G. W. & CHANDLER, L. R., 1999: Identification of Mealybugs important in the Caribbean Region with notes on preparation of whitefly pupae for identification. *Commonwealth Science Council and CAB International* 40 pp.

