

## Cavitary ciliochoroidal melanoma with extraocular extension

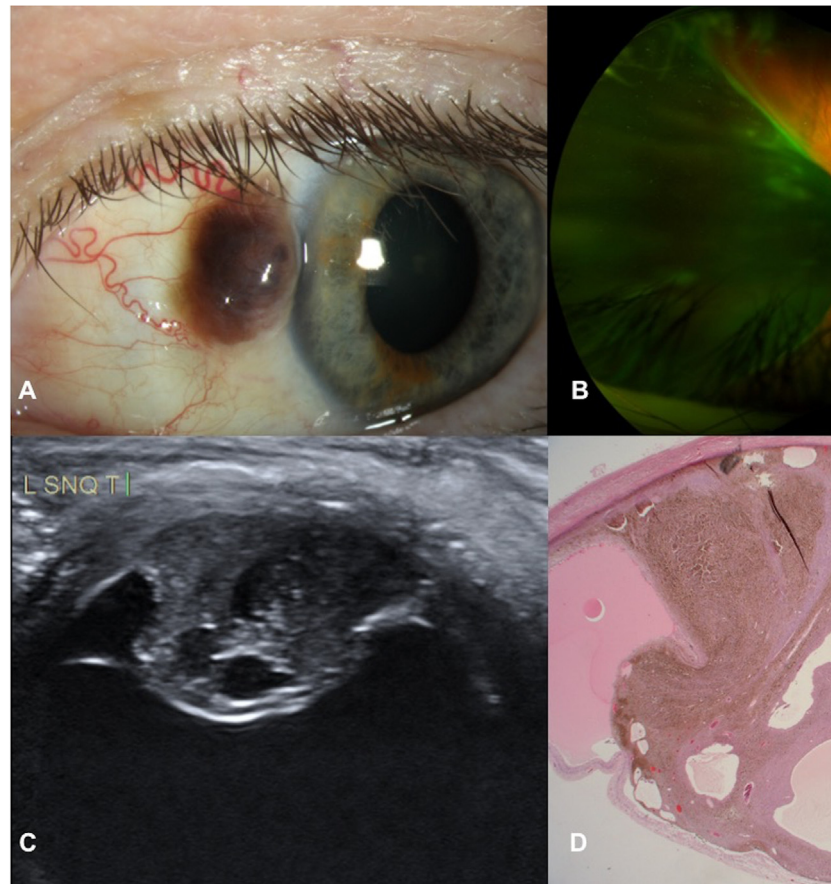


Figure 1—xxx

A 58-year-old white male had a pigmented nodule on the left ocular surface with sentinel vessels (Fig. 1A) and 6/6 visual acuity. Intraocular examination showed a ciliary body melanoma (Fig. 1B) with extraocular extension. Ultrasound B-scan showed a cavitary ciliochoroidal mushroom-shaped tumour that was 8.8 mm in height. (Fig. 1C). Enucleation was performed, modified to leave conjunctiva over the extraocular nodule undisturbed. Histopathologic examination (Fig. 1D) confirmed a spindle cell melanoma with extraocular spread and unlined cavities. This case illustrates the need for dilated funduscopy for ocular surface lesions and correlates cavitation on B-scan with unlined cavities within the uveal melanoma on histopathology.

\*Ocular Oncology Service, Moorfields Eye Hospital NHS Foundation Trust, London, United Kingdom; †Department of Ophthalmology, Inselspital, University Hospital of Bern, Bern, Switzerland; ‡NIHR Biomedical Research Centre for Ophthalmology at Moorfields Eye Hospital and University College London Institute of Ophthalmology, London, United Kingdom.

Originally received Jul. 25, 2023. Final revision Sep. 2, 2023. Accepted Sep. 23, 2023.

Correspondence to Rodrigo Anguita, MD, Moorfields Eye Hospital, 162 City Road, London, EC1V 2PD, United Kingdom; [r.anguitahenriquez@nhs.net](mailto:r.anguitahenriquez@nhs.net).

### Footnotes and Disclosure

The authors have no proprietary or commercial interest in any materials discussed in this essay.

Q1 Rodrigo Anguita,<sup>\*,†</sup> Caroline Thuang,<sup>\*</sup> Mandeep S. Sagoo<sup>\*,‡</sup>