

Western Kentucky University

TopSCHOLAR®

---

Student Organizations

WKU Archives Records

---

1984

## UA12/2/10 Delta Gamma Newsletter

Kappa Delta

Follow this and additional works at: [https://digitalcommons.wku.edu/stu\\_org](https://digitalcommons.wku.edu/stu_org)



Part of the [Leadership Studies Commons](#), [Organizational Communication Commons](#), [Social and Cultural Anthropology Commons](#), and the [Women's Studies Commons](#)

---

This Newsletter is brought to you for free and open access by TopSCHOLAR®. It has been accepted for inclusion in Student Organizations by an authorized administrator of TopSCHOLAR®. For more information, please contact [topscholar@wku.edu](mailto:topscholar@wku.edu).

# Delta Gamma Newsletter



## The "New" Kappa Delta House?

If you're driving down Chestnut Street, keep your eyes open or you might miss the KD house. That familiar white structure has taken on a whole new look. It's brick!

It all came about during the summer of 1982 when a group of KD alumnae got together to discuss future plans for the house. The white paint was coming off by the handfuls, so something had to be done. A new paint job would cost two or three thousand dollars and would only last a few more years before it would have to be redone. So they came up with an alternate plan---sand-blasting.

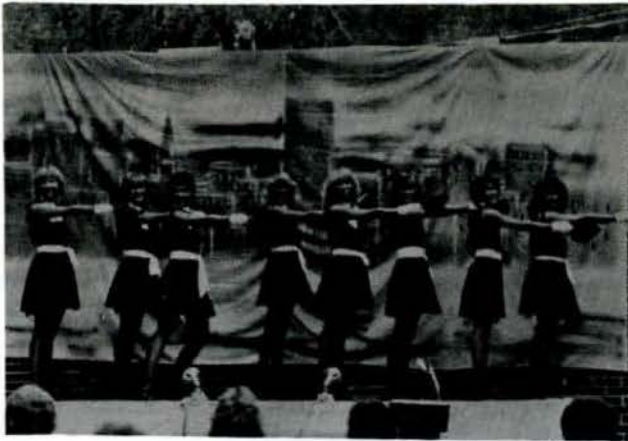
The cost of sandblasting was considerably more but after the initial expense, it would never have to be redone. So Delta Gamma requested a loan from National Kappa Delta and received \$16,000. This was enough to have the sandblasting done, the trim painted, the bushes cut back, and new

shutters and brass light fixtures added to the face of the house.

In 1965 Delta Gamma also borrowed money from Nationals, \$20,000 to purchase our house at 1600 Chestnut. In two more years, 1985, our mortgage to the previous owner will be paid off and we will only owe Nationals.

Our local AAB has been very active in raising money for the house. At homecoming, they received \$250 in alumnae contributions. Although there have been no final decisions about what to do with the money, one proposal is to use the money to landscape the front of the house, completing the picture.

**All these renovations helped make the KD house one of the biggest showcases at WKU. We, the collegians, invite all our alumnae to come by and see the "new" KD house.**



---

## Fall Rush '83

---

We began rush workshop on August 15, 1983 at 9:00 a.m.. We were all excited and ready to work, even in the sometimes 100 degree weather. We worked on costumes, props, songs, dances, and of course, conversation techniques. Toward the end of that week, everything seemed to be falling into place.

Rush officially began with silence starting at 9:00 a.m. Saturday, August 20. Sunday and Monday nights we held our "Getting to Know You" parties in the midst of hundreds of Raggedy Anns and lots of green and white. Our theme was "KD's in the Park." Tuesday night was a very welcomed "free" night to rest for Wednesday, which meant the first day of class and theme parties.

The KD House was clean from top to bottom for our theme parties on Wednesday and Thursday nights. We gave the rushees a tour of the house and then entertained them in our backyard with "KD's on Broadway."

Finally, Friday night arrived, the last night of rush. We had three preference parties with a total of 120 rushees returning! Saturday morning, bid day, we found out that all of our hard work had been worthwhile as we greeted 35 energetic, excited new pledges! We were one of three sororities who had reached quota!

After bids were given out we all went back to the house for a cookout in the backyard to get to know our pledges even better!

---

## Reference Reminders

---

Rush is the most important activity that KDs participate in each year. One of the keys to an effective rush is the recommendations that we, the collegiates, receive from our alumnae. This year more than ever before we are asking our alumnae to help us gather valuable information that will enable us to make wise decisions and avoid any last minute reference requests. Here are some reminders to help you to help us.

- 1) Send references as early as possible. Our rush takes place in August, therefore information is needed in early summer.
- 2) Include information that will indicate the rushee's potential as a strong chapter member - give examples of leadership and campus activities. Be sure to describe clubs - the name of an unknown organization is not helpful in an accurate assessment.
- 3) Comment as fully as you can on her character and personality to help us know how to rush her intelligently.
- 4) Be specific on scholarship, list her grade point average or exact rank in class and the size of graduating class.
- 5) Attach a photo of the rushee whenever possible.
- 6) Include any Greek family affiliations the rushee may have. This can indicate her knowledge and understanding of the Greek system and it's advantages.
- 7) Fill out a reference for any young women attending a college where KD has a chapter, even if she's not sure she's going through rush. Minds can change quickly and at the last minute!
- 8) Think now of any potential rushees you may know. Contact Central office for reference forms.

---

## What a Jamboree!

---

This years Kappa Delta Washboard was its usual success. For the third year in a row, Sigma Phi Epsilon won the fraternity division, and Alpha Omicron Pi captured the 1st place sorority division.

Washboard also proved to be a success for one of our philanthropies, the Prevention of Child Abuse. All together, we raised over \$900 from advertising and ticket sales.

Special thanks goes to Lori Knight for coordinating a successful Washboard!

# Delta Gamma Queen Candidates



Ann Hochgesang was 1st runner-up in the 1983 Homecoming Competition. Hochgesang, Vice-president of Kappa Delta, is a junior Public-Relations major from Jasper, Indiana.



Jenni Philips was the Mountain Laurel Festival representative from W.K.U.. She was selected from a group of 22 women to represent the university at the Festival in Pineville, Ky. last May. Philips is an '84 graduate in textiles and clothing.

## KD's Place First!

The fall '83 semester has been a great one for us! We are proud to say that our hard work and spirit has paid off!

In October, we captured the 1st place spirit award at the WKU basketball "Mid-Night Mania." We sponsored Mike Ballenser, a WKU basketball player and Big Brother, by making signs and cheering for him.

Last, but not least, we kept up the KD tradition by placing 1st in Chi Omega's November Nonsense. In case you've lost count, that is our 6th 1st place finish in a row!

Way to go, KDs!

## Cupids Corner

### Engaged:

Suzanne Lindsey . . . . . Mike Litchfield  
Rene' Jefferies . . . . . Craig White

### Pinned:

Anita Zile . . . . . Jack Nunnally  
Donna Turner . . . . . Russ Skog  
Tracie Thomas . . . . . Kevin Atwood

### Lavaliered:

Debbie Smiley . . . . . Doug Ford  
Karen Frye . . . . . Ronnie Turner  
Bonnie Bench . . . . . Lance Koenig  
Jenna Hulse . . . . . Steve Nichelson  
Alice Lacer . . . . . Steve Woosley  
Tracey Hamilton . . . . . Stoney Crockett  
Kim Eisert . . . . . Mike Simpson

## KD Honors

Allyson Rowles . . . . . W.K.U. Spirit Master  
Kristen Reeder . . . . . Journalism Scholarship  
Sara Salb . . . . . Senior V.P.  
Carla Wuchner . . . . . National KD Scholarship  
Susan Stockton . . . . . W.K.U. Alumni Scholarship,  
Kentucky Jr. Miss Finalist, A.S.G. Member  
Chandler Fowler . . . . . Music Scholarship

Chandler Fowler and Debbie Reed

Members of the W.K.U. Choir, represented the U.S. on a tour of European countries last summer. The Kentucky group was one of 10 university groups that were selected to make the tour.

## Council 1983-84

PRESIDENT-- . . . . . Kim Eisert  
Georgetown, IN, Junior  
VICE-PRESIDENT-- . . . . . Wendy Combs  
Versailles, KY, Junior  
SECRETARY-- . . . . . Robin Batts  
Hopkinsville, KY, Sophomore  
TREASURER-- . . . . . Jane Purcell  
Somerset, KY, Sophomore  
ASSISTANT TREASURER-- . . . . . Joey Dean,  
Louisville, KY, Freshman  
MEMBERSHIP CHAIRMAN-- . . . Chandler Fowler  
Brentwood, TN, Junior  
EDITOR-- . . . . . Beth Page  
Glasgow, KY, Junior

---

## St. Patrick's Day Philanthropic Project

---

Kappa Delta's 45th National Convention was held at the O'Hare Marriotte in Chicago, Illinois.

The Philanthropy luncheon at the 1983 National Convention included speakers from the Children's Hospital in Richmond, Virginia, and representatives from the National Committee of Child Protection. One announcement, however, became the exciting focus of the afternoon.

KD's now have a national philanthropic project. Across the nation, Kappa Delta's will set up booths in malls and shopping centers and collect donations to benefit the National Committee for the Prevention of Child Abuse. Appropriately, this will happen on or near St. Patrick's Day, and each donator will receive a green and white shamrock in appreciation.

The NCPCA is a new National philanthropy for KD, founded by Donna Stone who is

Kappa Delta Sorority  
Delta Gamma Chapter  
1600 Chestnut Street  
Bowling Green, Kentucky 42101

also a KD. Since this is the first activity of this type that KD's have participated in nationally, each chapter is eagerly looking forward to this holiday project.

It should be very successful, and soon become a Kappa Delta tradition.

---

## I'd like to thank...

---

The "Delta Gamma Newsletter" was produced as a group project in Process Photography 307. Those responsible for the layout and production were Chris Abell, Laura Boulden, Jason Baxter and Lisa Andrews.

Stories were written by Cherly Cates, Carol Stockton, Tracie Thomas and Lisa Andrews.

Special thanks goes to our instructor, Dr. Norman Tomazic, for all his help.

Hope you enjoyed it! A.O.T.--

*Lisa*