

xrite

colorchecker CLASSIC

C235-40

JEWELRY NECKLACES LA ALBERCA, SALAMANCA

FROM PHOTOGRAPHS
IN THE COLLECTION OF
THE HISPANIC SOCIETY
OF AMERICA

WITH COMPARATIVE MATERIAL



P(12336)

Jewelry of silver, silver-gilt, and coral is worn with the wedding costume of La Alberca. The pieces consist of a long string of large metal beads (*vuelta grande*), a double string of corals and smaller metal beads (*media vuelta*), a double string of round coral beads and small metal beads (*manejo de corales*), two rosaries, and two *brazaleras*. Because of the weight of the necklaces, the cords of the three heaviest strings are pinned securely to the back of the bodice. The cords and pins are concealed by ribbons of silk brocade. The villagers claim that the large metal beads (*carros y cuentas*) are of Arabic origin. Details of the pieces follow the full length illustrations. In the original photographs, these details are shown to actual size.

COPYRIGHT, 1931, BY
THE HISPANIC SOCIETY OF AMERICA

19. 33798

100 mm

C235-40

JEWELRY NECKLACES LA ALBERCA, SALAMANCA

FROM PHOTOGRAPHS
IN THE COLLECTION OF
THE HISPANIC SOCIETY
OF AMERICA

WITH COMPARATIVE MATERIAL



P(12336)

Jewelry of silver, silver-gilt, and coral is worn with the wedding costume of La Alberca. The pieces consist of a long string of large metal beads (*vuelta grande*), a double string of corals and smaller metal beads (*media vuelta*), a double string of round coral beads and small metal beads (*manejo de corales*), two rosaries, and two *brazaleras*. Because of the weight of the necklaces, the cords of the three heaviest strings are pinned securely to the back of the bodice. The cords and pins are concealed by ribbons of silk brocade. The villagers claim that the large metal beads (*carros y cuentas*) are of Arabic origin. Details of the pieces follow the full length illustrations. In the original photographs, these details are shown to actual size.

COPYRIGHT, 1931, BY
THE HISPANIC SOCIETY OF AMERICA

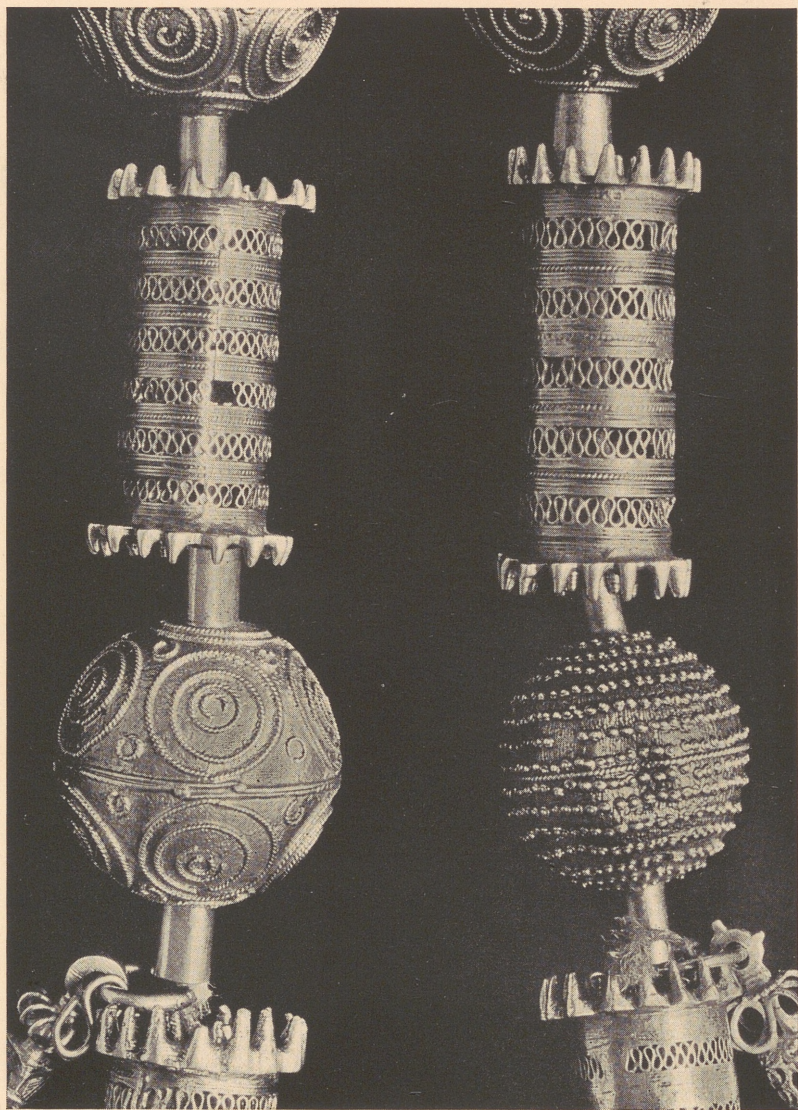


P. 33798



P(12622)

VUELTA GRANDE



P(12623)

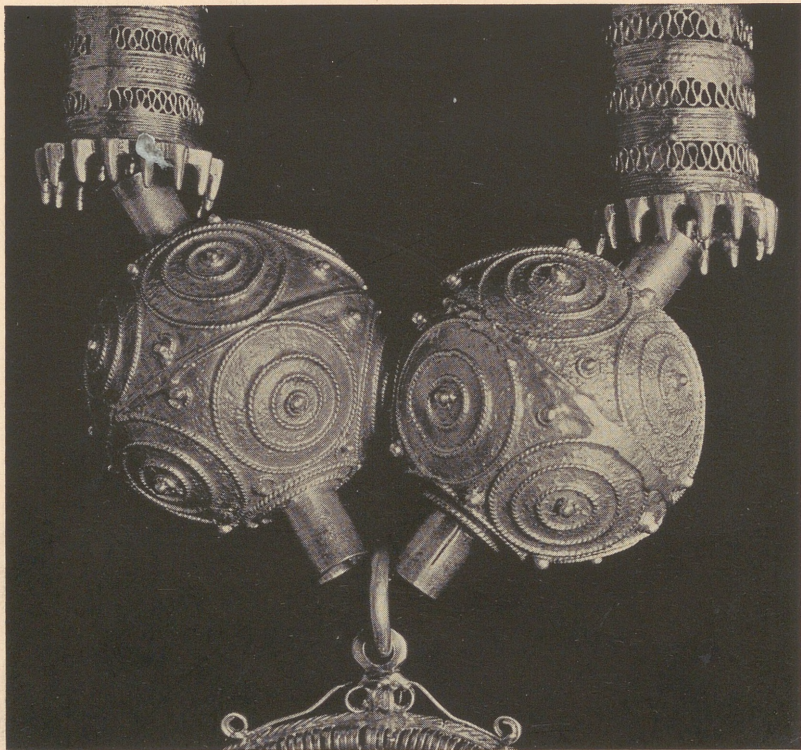
CARROS Y CUENTAS



P(12626)



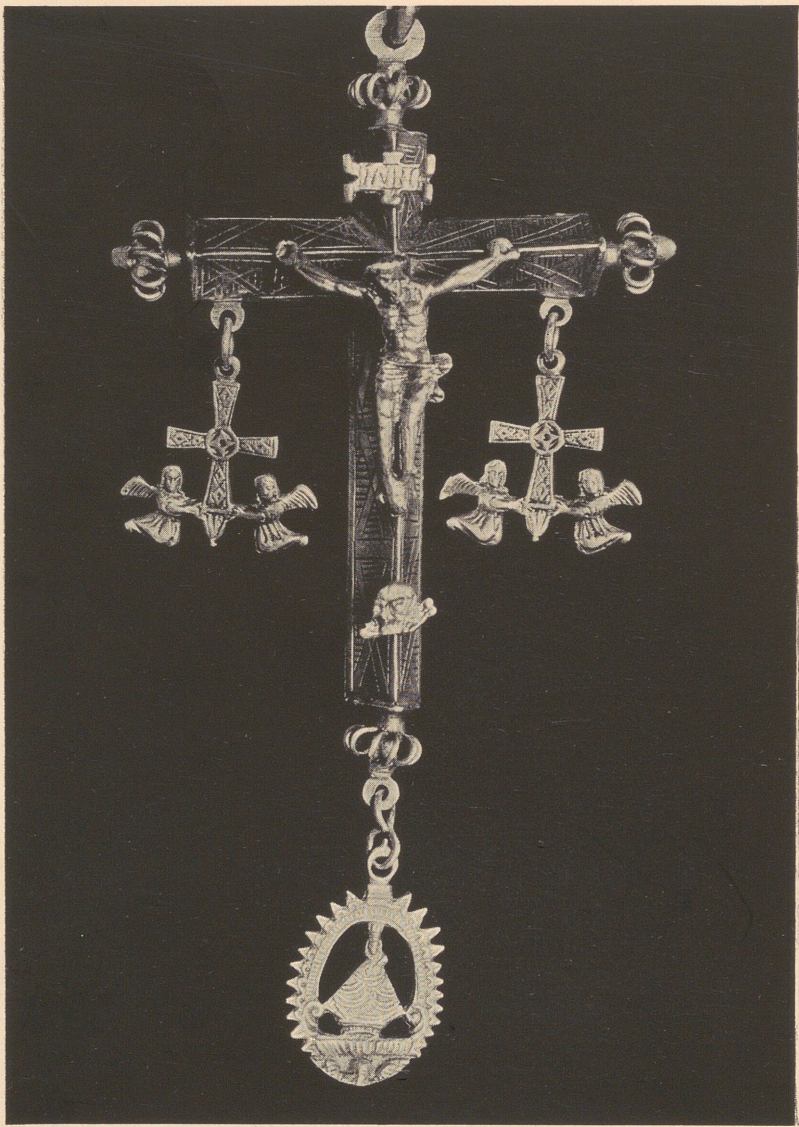
P(12627)



P(12625)

S Sig.: C235-40
Tit.: Jewelry, necklaces La Albe
Aut.: Hispanic Society of Americ
Cód.: 1032394





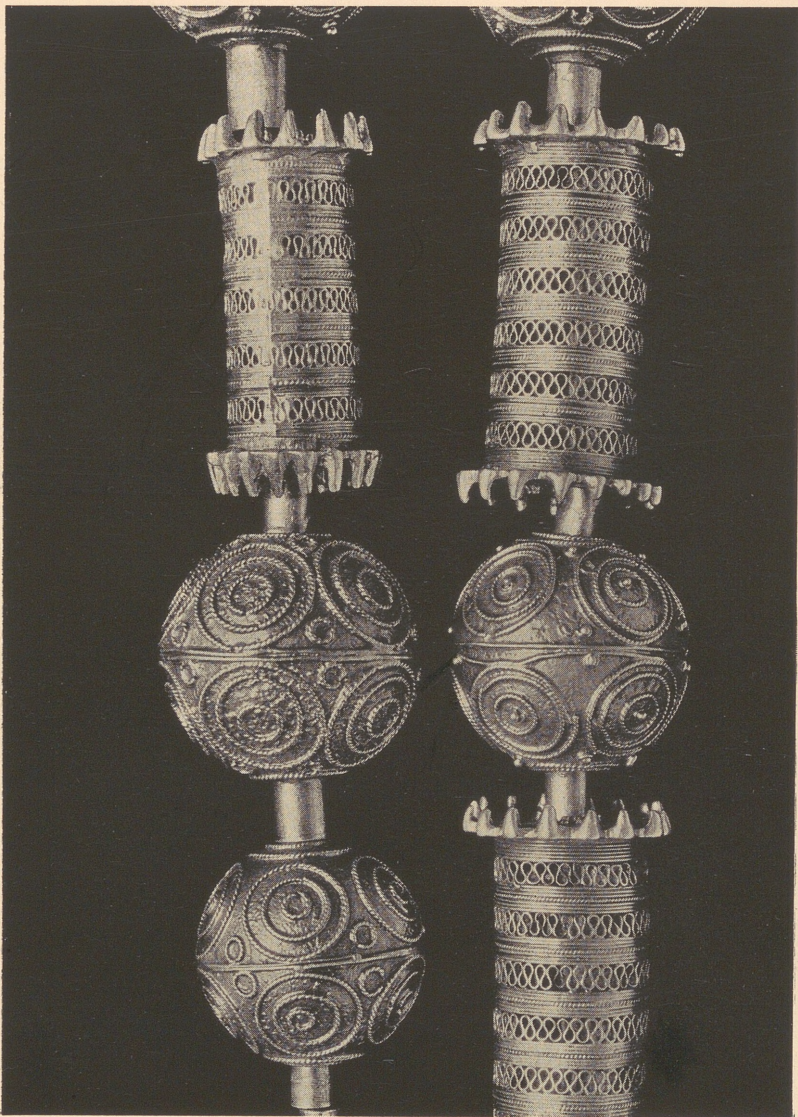
P(12628)



P(12629)



P(12630)

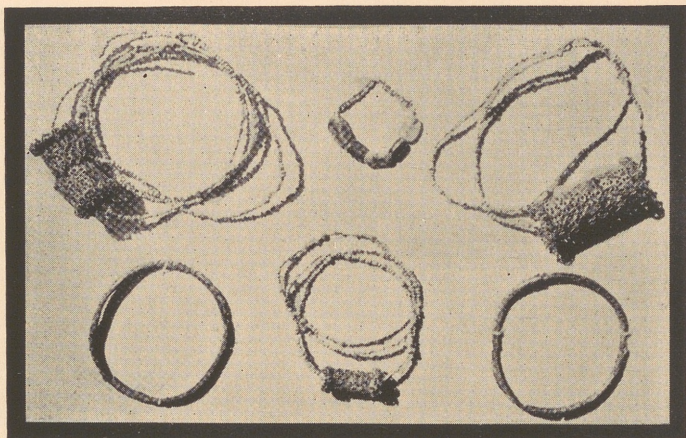


P(12624)



P55259

JEWELRY FROM LA MARAGATERIA, LEON
Orens. Museo Arqueológico



HISPANO-MOESQUE JEWELRY FOUND IN THE PROVINCE OF GRANADA
 From Williams, Leonard. *The arts and crafts of older Spain*. v.1, Plate 14.



HISPANO-MOESQUE NECKLACE
 From Llanos y Torriglia, Félix de.
Joyas. In *Blanco y Negro*.
 June 28th, 1925.

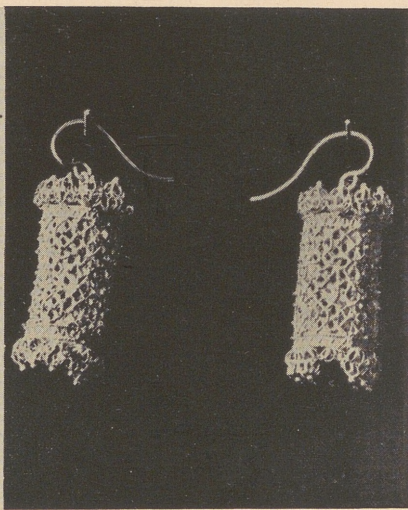


Photo. Flli. Alinari
 MOORISH EARRINGS
 Florence. Museo Nazionale



P(12640)

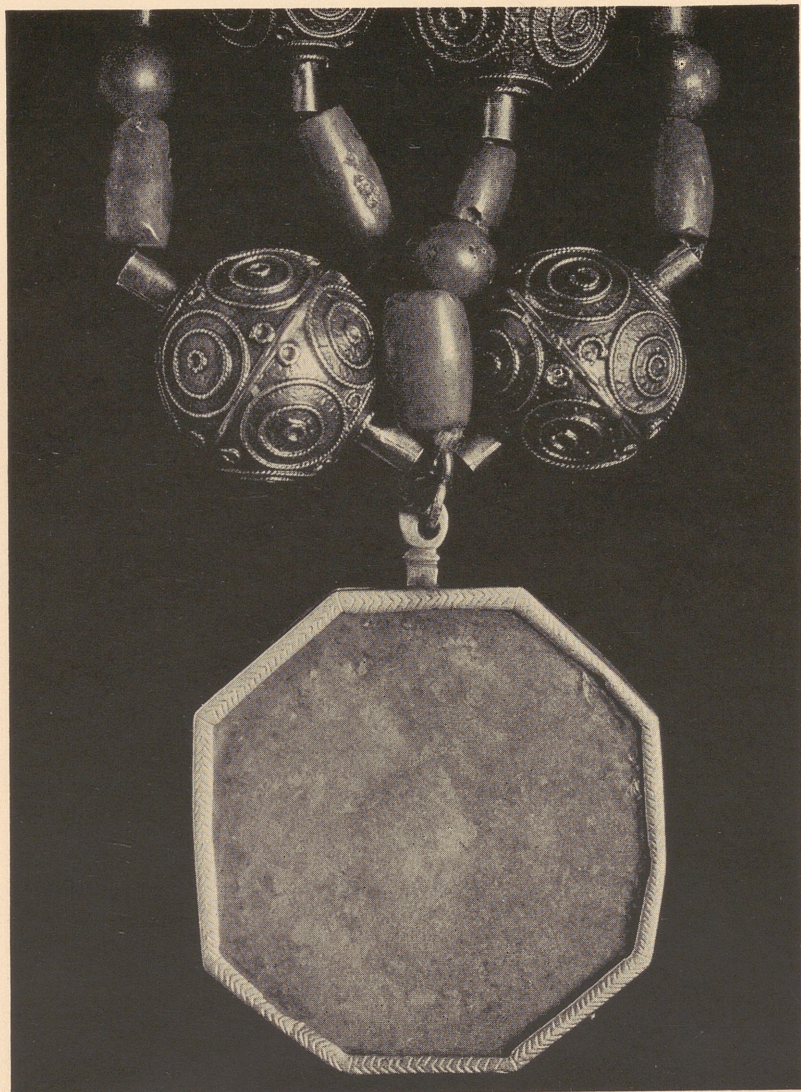


P(12639)



P(12635)

MANOJO DE CORALES



P(12634)



P(12633)



P(12631)

MEDIA VUELTA



P(12660).

ROSARIO DE CORALES



P(12661)

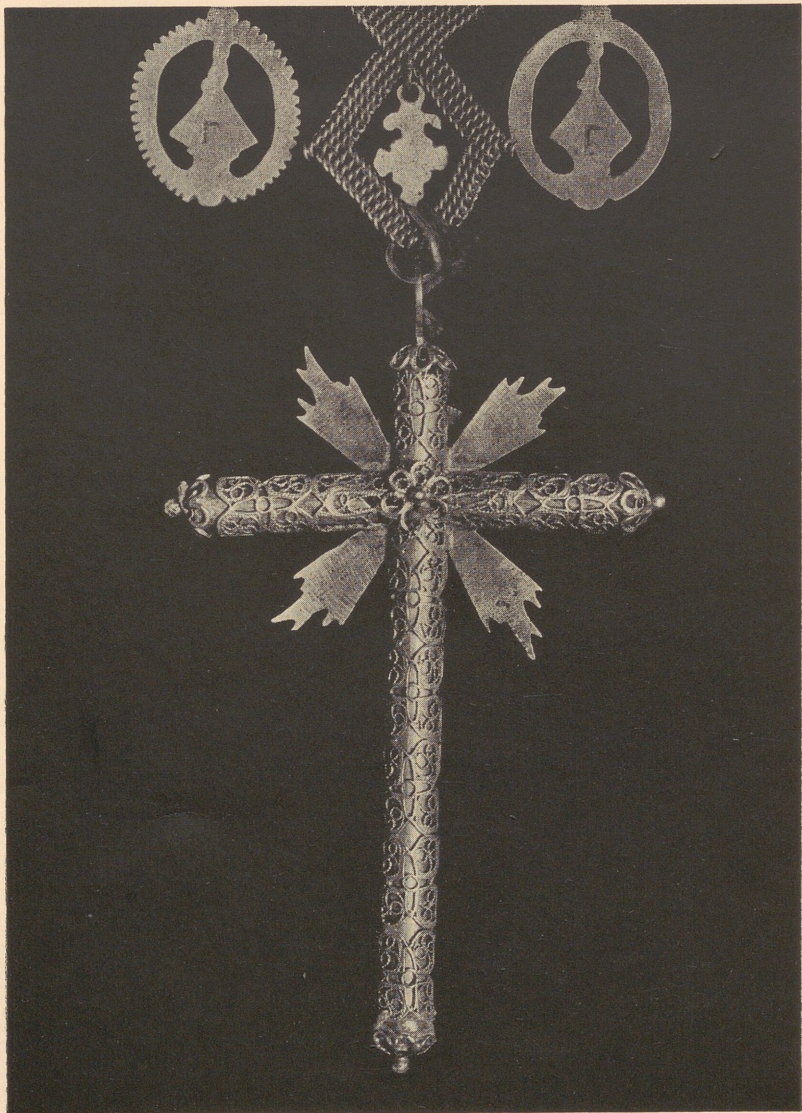
INDIA, ANDHRA PRADESH, VISAKHAPATNAM

1954-55, 1956-57, 1957-58, 1958-59, 1959-60, 1960-61, 1961-62, 1962-63, 1963-64, 1964-65, 1965-66, 1966-67, 1967-68, 1968-69, 1969-70, 1970-71, 1971-72, 1972-73, 1973-74, 1974-75, 1975-76, 1976-77, 1977-78, 1978-79, 1979-80, 1980-81, 1981-82, 1982-83, 1983-84, 1984-85, 1985-86, 1986-87, 1987-88, 1988-89, 1989-90, 1990-91, 1991-92, 1992-93, 1993-94, 1994-95, 1995-96, 1996-97, 1997-98, 1998-99, 1999-00, 2000-01, 2001-02, 2002-03, 2003-04, 2004-05, 2005-06, 2006-07, 2007-08, 2008-09, 2009-10, 2010-11, 2011-12, 2012-13, 2013-14, 2014-15, 2015-16, 2016-17, 2017-18, 2018-19, 2019-20, 2020-21

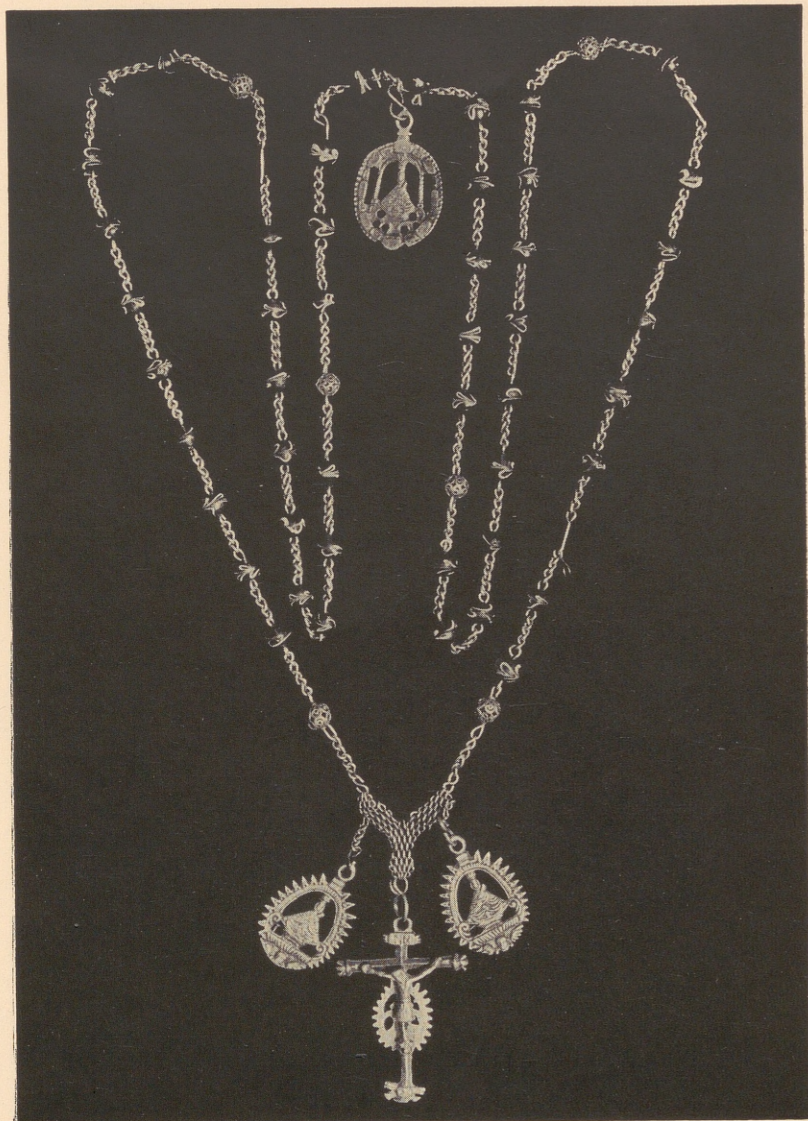


P(12662)

185.114



P(12663)



P(12664)

ROSARIO DE PLATA

