



PROGRAMME OF THE
EUROPEAN UNION



co-funded with

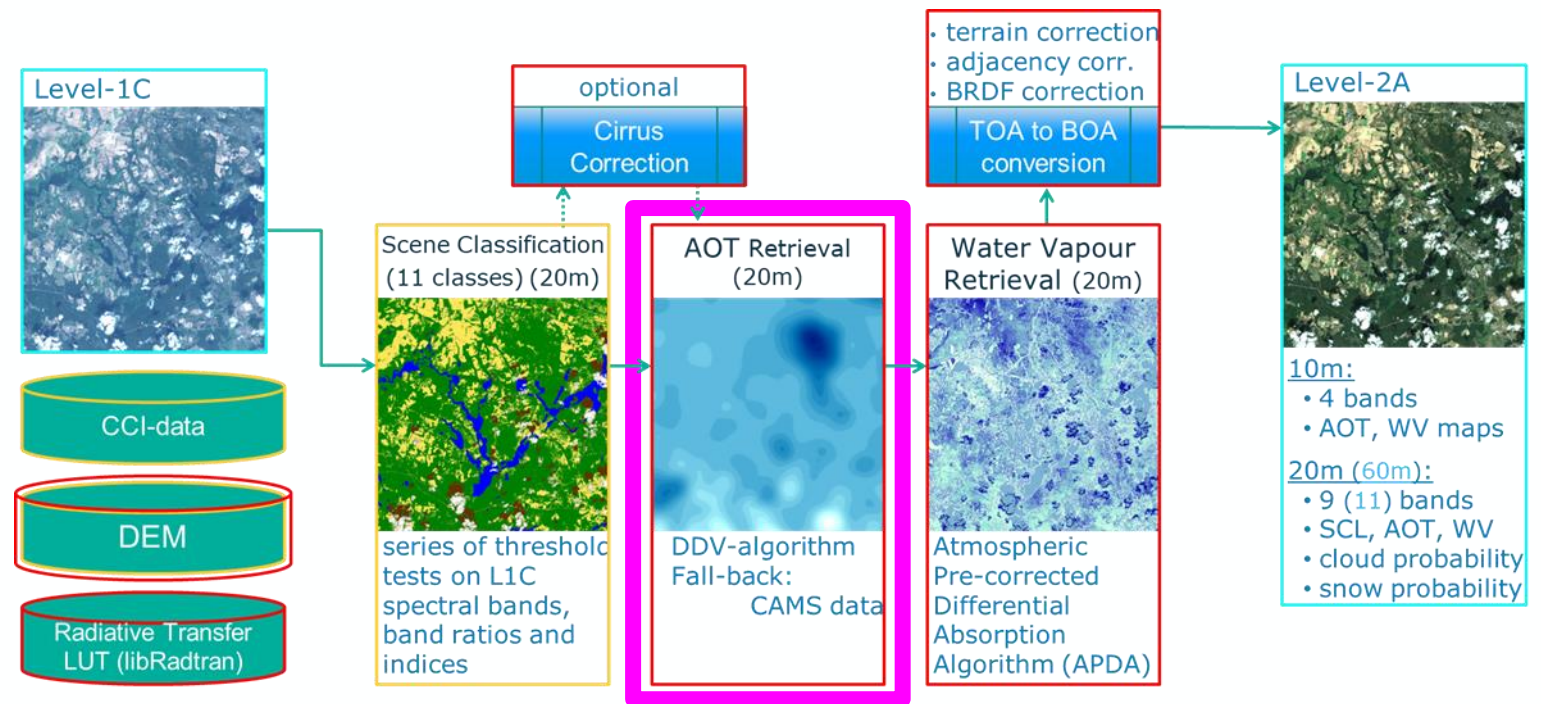


Comparison of DDV-algorithm for AOT estimation in Sen2Cor and use of AOT from CAMS data

Bringfried Pflug¹, Raquel de los Reyes¹, Jérôme Louis², Avi Putri Pertiwi¹, Francesco C. Pignatale³, Silvia Enache⁴,
Rosario Quirino Iannone⁵, Valentina Boccia⁶, Ferran Gascon⁶

¹German Aerospace Centre, ²Telespazio France, ³Telespazio Germany GmbH, ⁴CS Group, ⁵Rhea spa, ⁶ESA (ESRIN)

- ❖ AOT retrieval performance of operational processing
- ❖ AOT retrieval performance of DDV-algorithm compared to CAMS data use
 - ❖ Method
 - ❖ Data set
 - ❖ Average results
 - ❖ Detailed results
- ❖ Conclusions



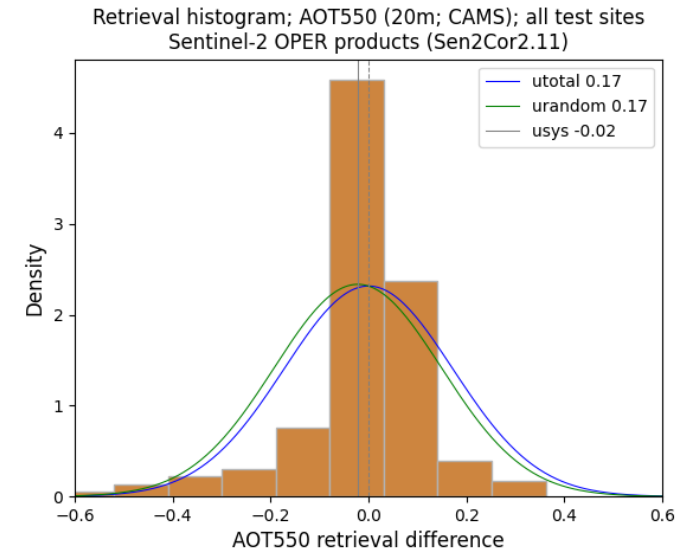
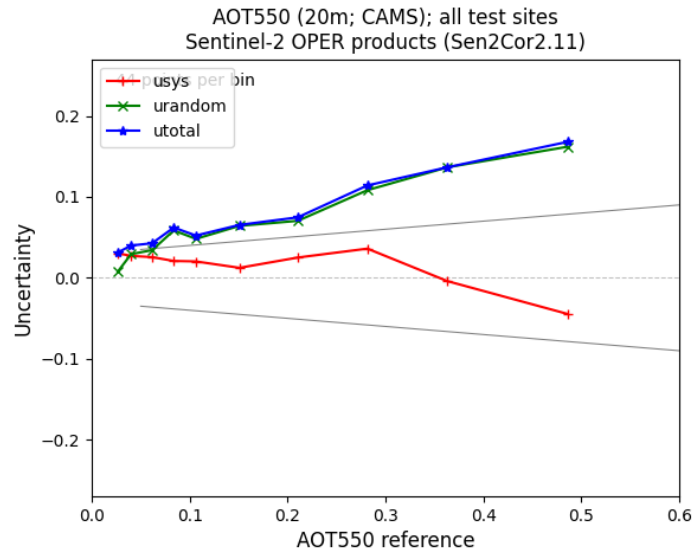
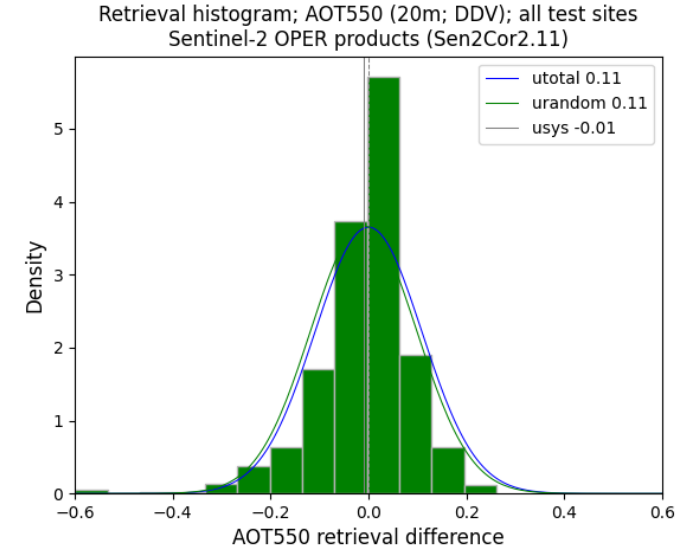
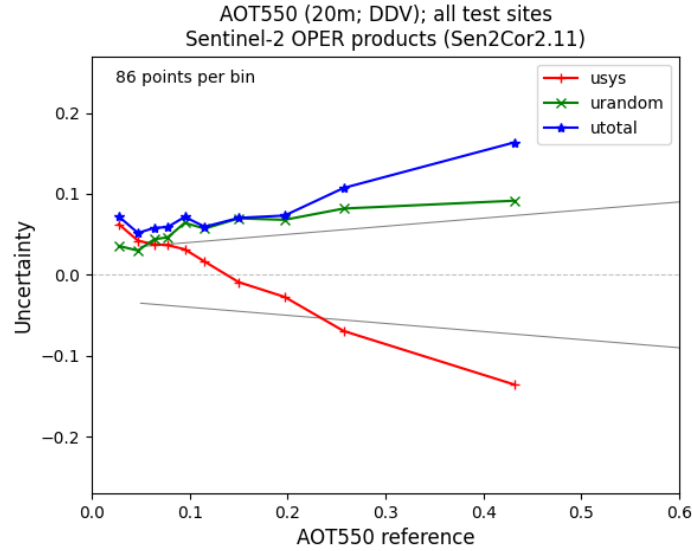
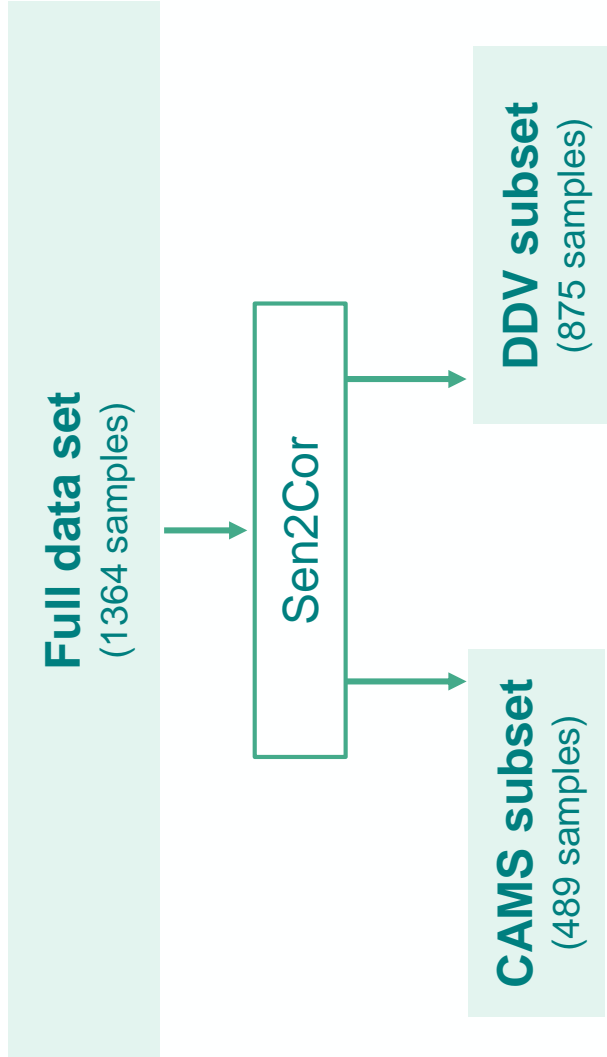
Operational processing



PROGRAMME OF THE EUROPEAN UNION



co-funded with



Operational processing



PROGRAMME OF THE EUROPEAN UNION



co-funded with



Latitude	AOT _{DDV}	Sample size	U _{sys} (Bias)	MedAE	U _{total} (RMSD)	within spec	range	AOT _{CAMS}	Sample size	U _{sys} (Bias)	MedAE	U _{total} (RMSD)	within spec	range
> 60°N	Polar	55	0.05	0.05	0.08	27%	0.02 – 0.46	Polar	35	0.02	0.02	0.04	69%	0.02 – 0.25
45 - 60 °N	Boreal	214	0.00	0.03	0.06	64%	0.02 – 0.54	Boreal	21	0.00	0.03	0.07	81%	0.02 – 1.0
30 - 60 °N	Midlat. N	358	0.02	0.05	0.09	47%	0.02 – 0.96	Midlat. N	181	-0.01	0.03	0.16	59%	0.01 – 2.3
15 - 30 °N	Subtrop. N	106	-0.11	0.08	0.20	36%	0.03 – 1.6	Subtrop. N	126	-0.05	0.08	0.23	40%	0.03 – 1.8
15°S - 15°N	Tropical	82	-0.07	0.06	0.14	43%	0.06 – 0.95	Tropical	51	-0.03	0.08	0.21	41%	0.05 – 1.4
15 - 30 °S	Subtrop. S	45	-0.03	0.07	0.09	33%	0.05 – 0.45	Subtrop. S	25	-0.09	0.11	0.16	32%	0.09 – 0.92
> 30° S	Midlat._S	15	0.04	0.04	0.05	47%	0.04 – 0.14	Midlat._S	41	0.01	0.02	0.03	78%	0.09 – 0.19
	All data	875	-0.01	0.04	0.11	47%	0.02 – 1.6	All data	489	-0.02	0.04	0.17	54%	0.01 – 2.3

Specification: $U < 0.1 * AOT_{550} + 0.03$

$$\Delta AOT = AOT_{550_{SEN2COR}} - AOT_{550_{REFERENCE}}$$

$$U_{sys} = \sqrt{\frac{1}{(n-1)} \cdot \sum_{i=1}^n \Delta AOT_i}$$

$$U_{random} = \sqrt{\frac{1}{(n-1)} \cdot \sum_{i=1}^n (\Delta AOT_i - u_{sys})^2}$$

$$MedAE = Median(|\Delta AOT_i|)$$

$$U_{total} = \sqrt{U_{sys}^2 + U_{random}^2}$$



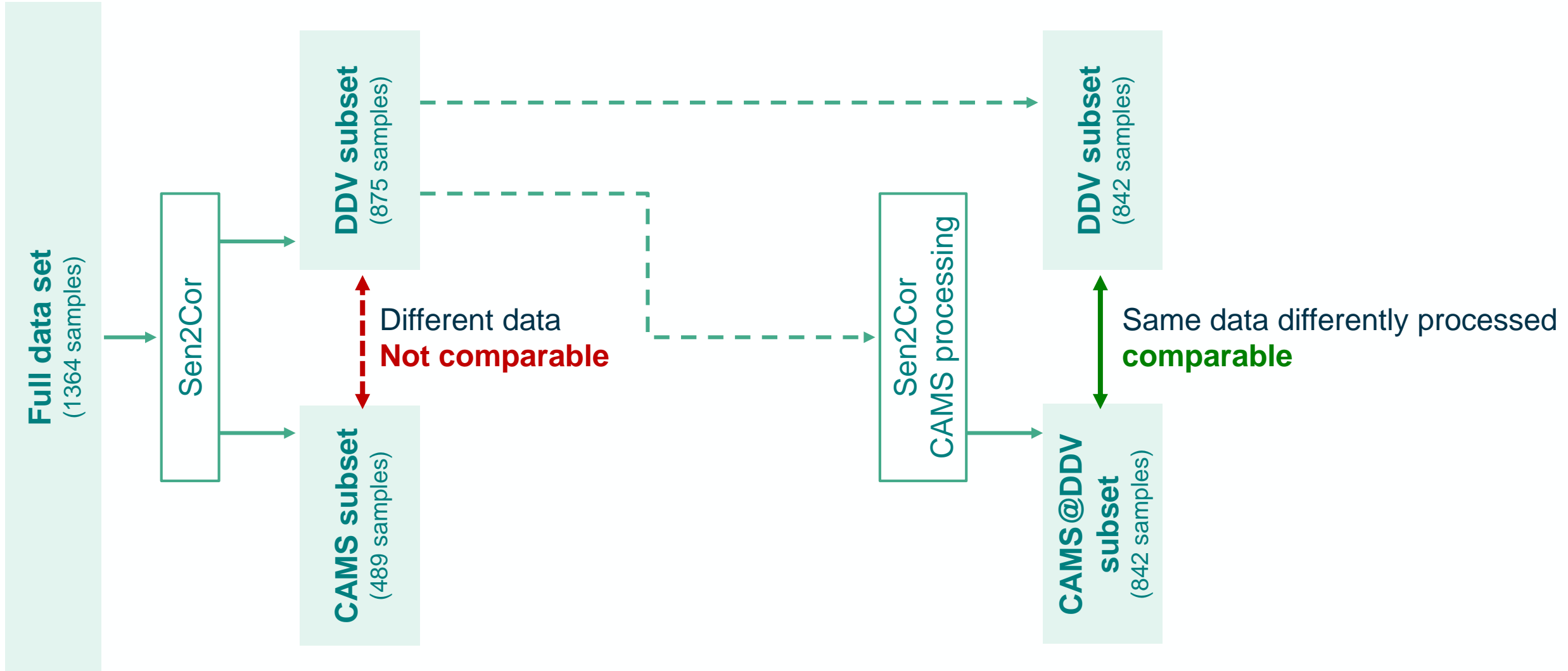
DDV compared with CAMS: Method



PROGRAMME OF THE EUROPEAN UNION



co-funded with



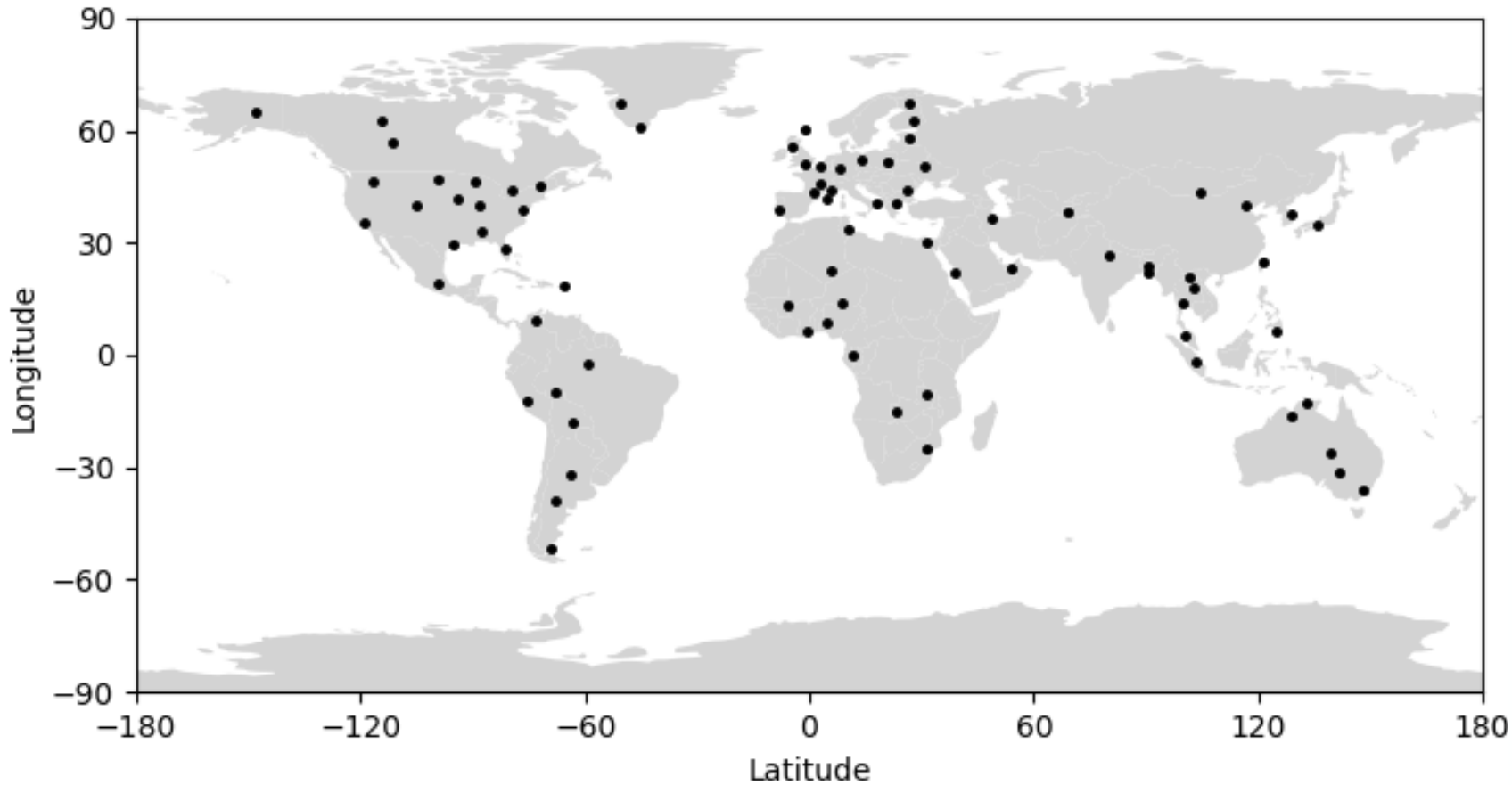
DDV compared with CAMS: Data set



PROGRAMME OF THE EUROPEAN UNION



co-funded with



DDV subset	Sites	Samples	range
Polar	5	53	0.02 - 0.46
Boreal	13	212	0.02 - 0.54
Midlat. N	16	349	0.02 - 0.66
Subtrop. N	7	86	0.03 - 0.80
Tropical	8	82	0.06 - 0.95
Subtrop. S	3	45	0.05 - 0.45
Midlat. N	2	15	0.04 - 0.14
All data	54	842	0.02 - 0.95



DDV compared with CAMS: Average results



PROGRAMME OF THE
EUROPEAN UNION



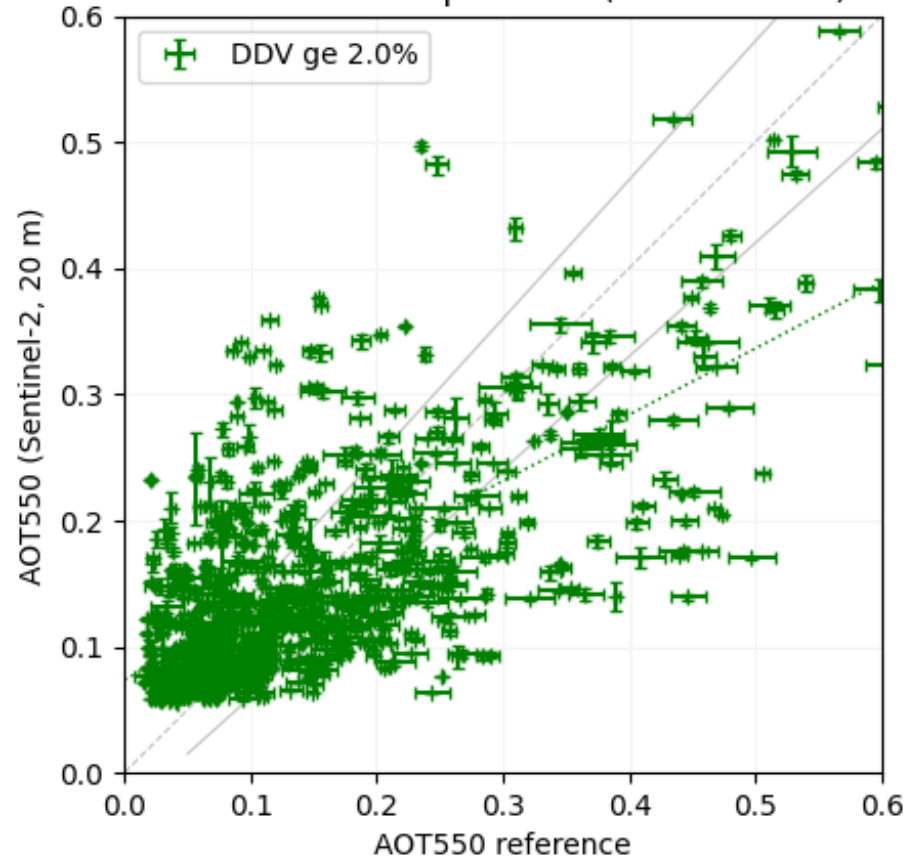
co-funded with



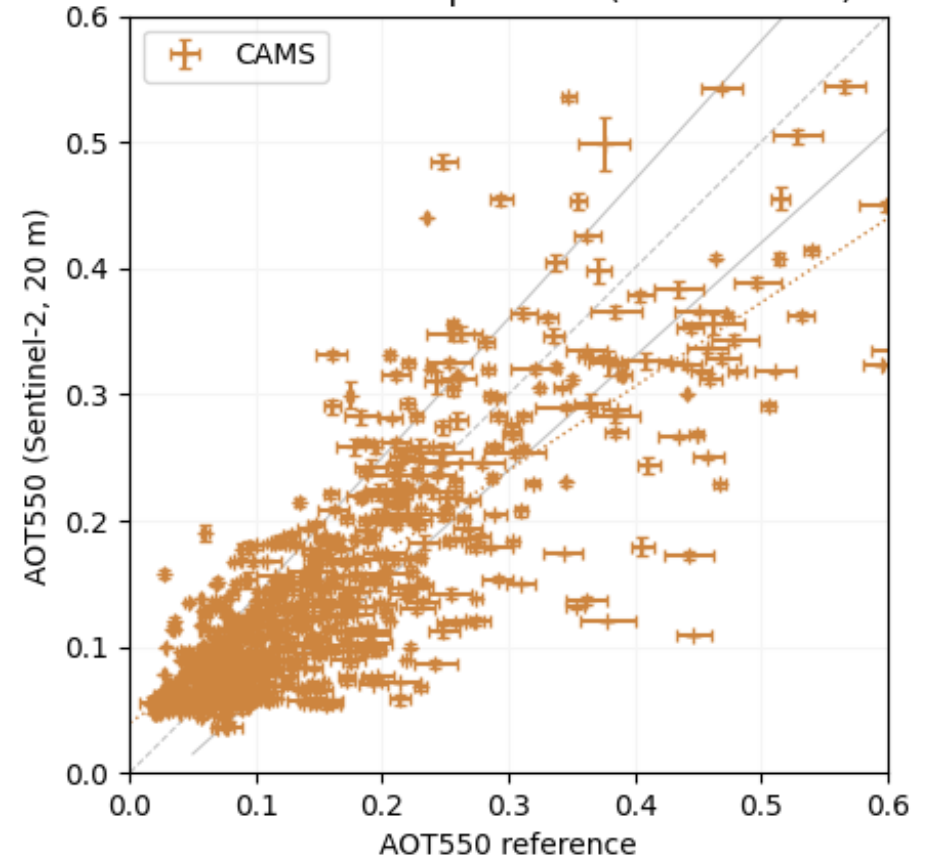
DDV

CAMS

AOT550 (20m; DDV); all test sites
Sentinel-2 USER products (Sen2Cor2.11)



AOT550 (20m; CAMS); all test sites
Sentinel-2 USER products (Sen2Cor2.11)



DDV compared with CAMS: Average results



PROGRAMME OF THE EUROPEAN UNION

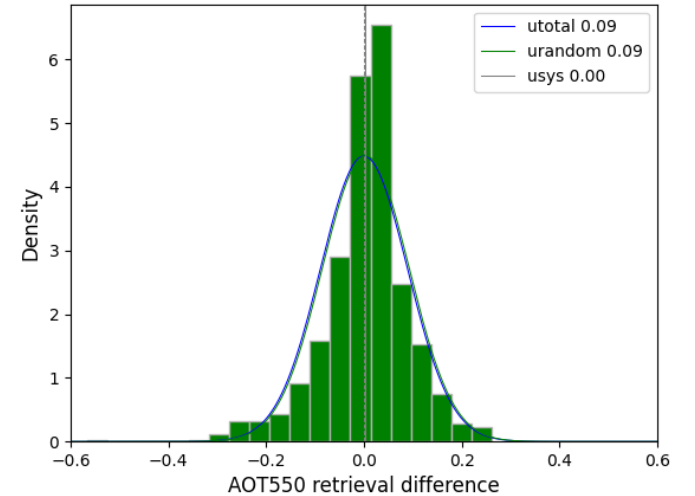


co-funded with

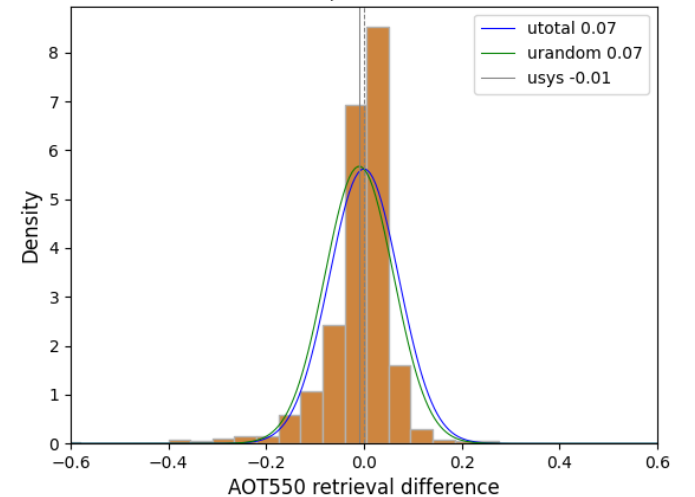


AOT_{DDV}	U_{sys} (Bias)	U_{sys} (Bias)	MedAE	MedAE	U_{total} (RMSD)	U_{total} (RMSD)	within spec	within spec
	DDV	CAMS	DDV	CAMS	DDV	CAMS	DDV	CAMS
Polar	0.06	0.01	0.05	0.02	0.08	0.03	28%	79%
Boreal	0.00	0.00	0.03	0.02	0.05	0.05	62%	70%
Midlat. N	0.03	0.00	0.05	0.03	0.09	0.06	42%	68%
Subtrop. N	-0.06	-0.05	0.06	0.05	0.09	0.11	44%	51%
Tropical	-0.06	-0.02	0.05	0.04	0.14	0.12	46%	52%
Subtrop. S	-0.02	-0.02	0.06	0.03	0.09	0.08	40%	67%
Midlat. S	0.04	0.00	0.04	0.01	0.05	0.03	40%	93%
All data	0.00	-0.01	0.05	0.03	0.09	0.07	47%	66%

Retrieval histogram; AOT550 (20m; DDV); all test sites Sentinel-2 USER products (Sen2Cor2.11)



Retrieval histogram; AOT550 (20m; CAMS); all test sites Sentinel-2 USER products (Sen2Cor2.11)



DDV compared with CAMS: Detailed results



PROGRAMME OF THE EUROPEAN UNION



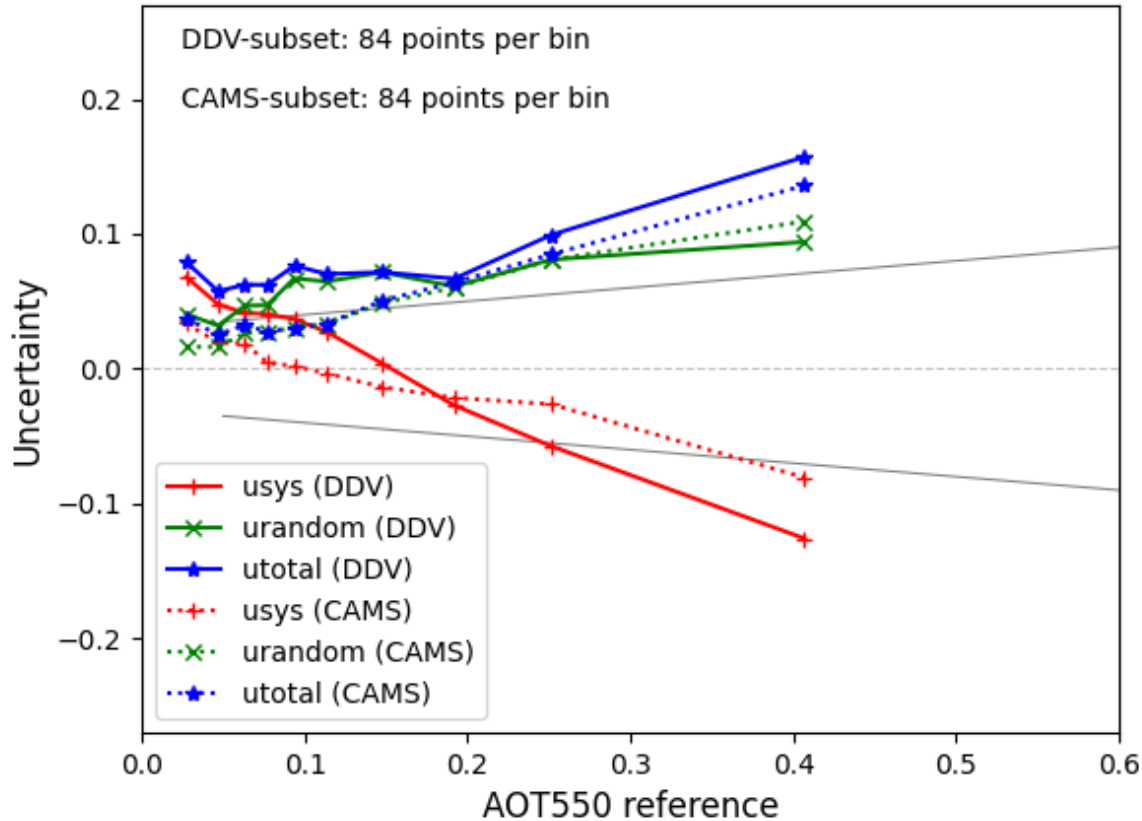
co-funded with



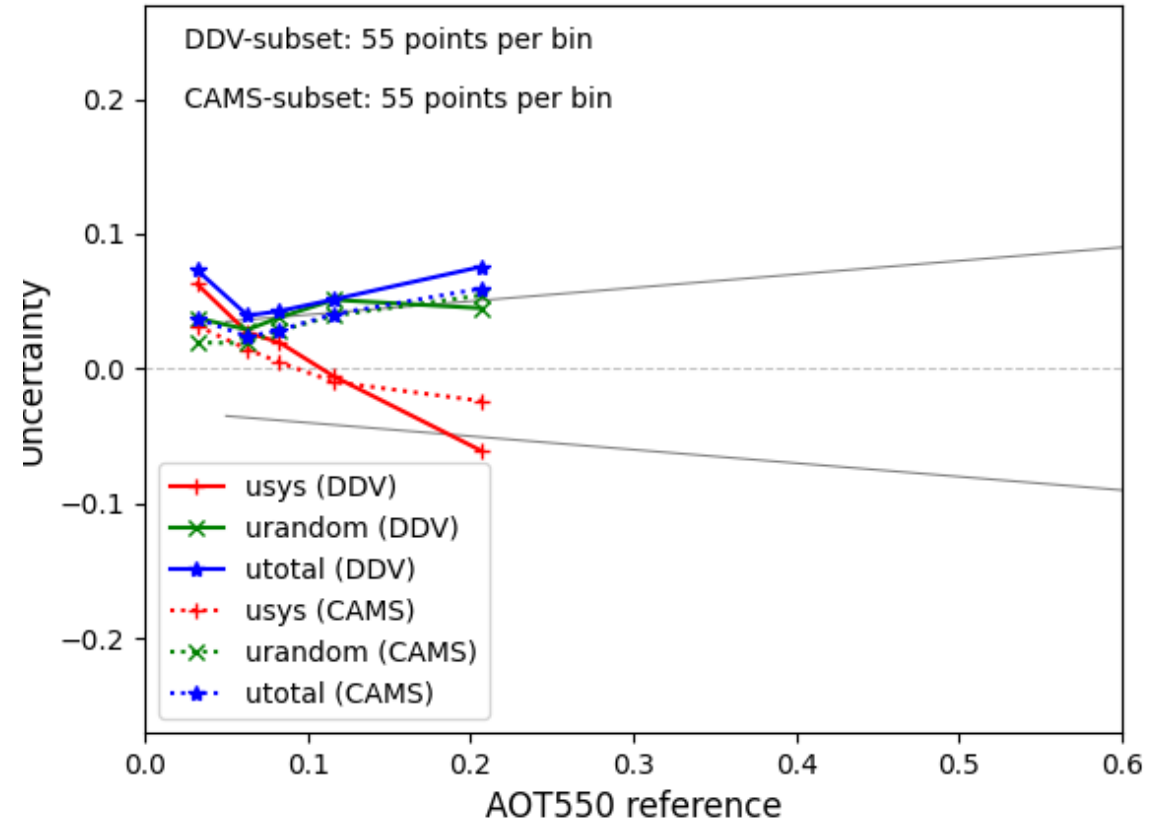
All Data

Europe

AOT550 (20m); all test sites
Sentinel-2 USER products (Sen2Cor2.11)



AOT550 (20m); test site: Europe
Sentinel-2 USER products (Sen2Cor2.11)



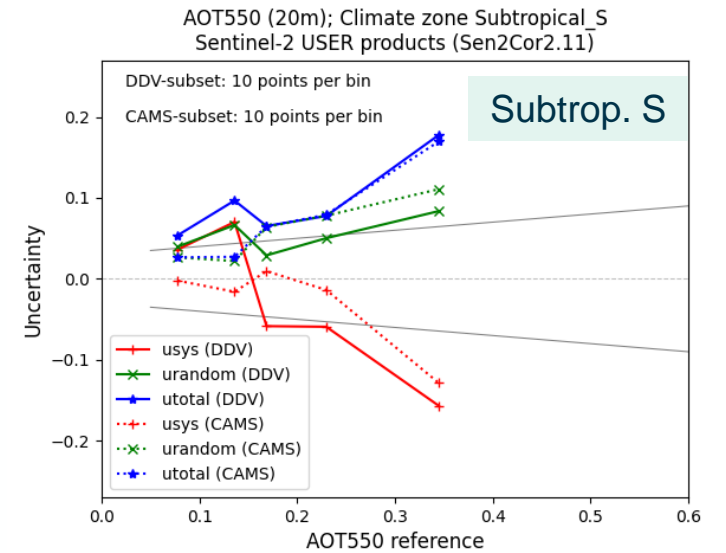
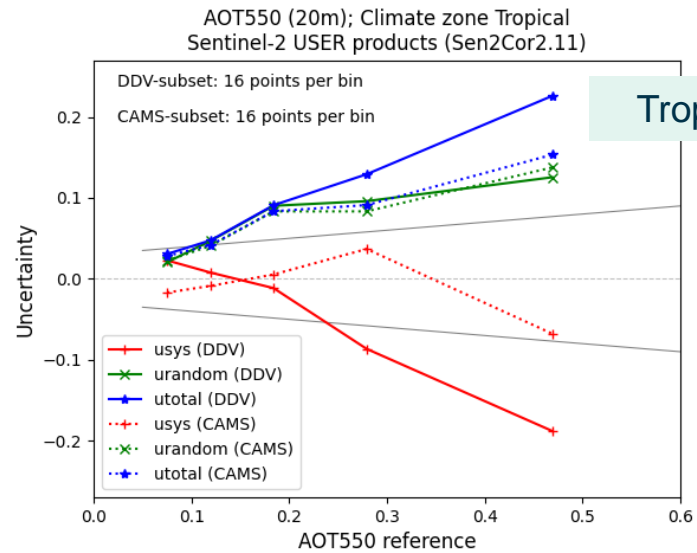
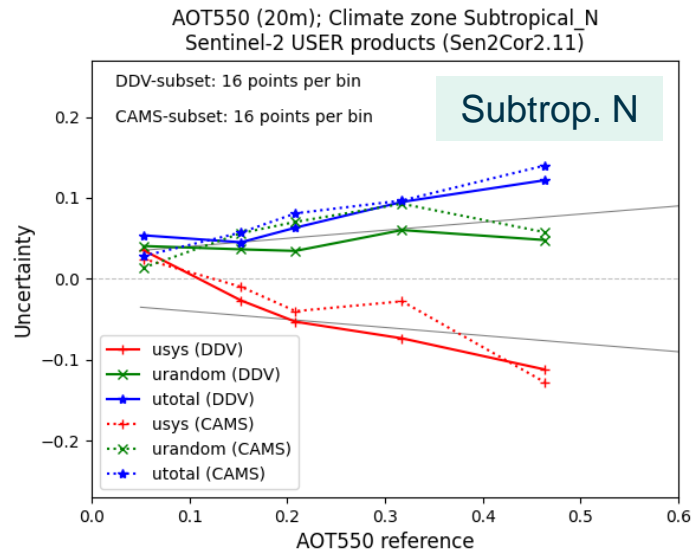
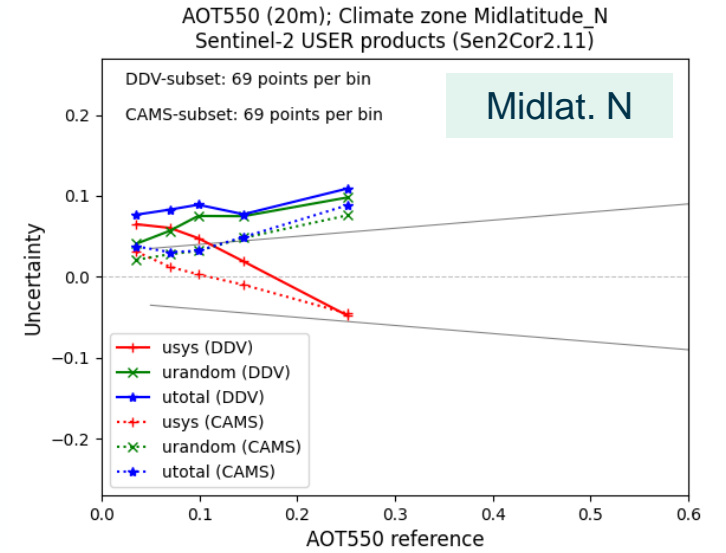
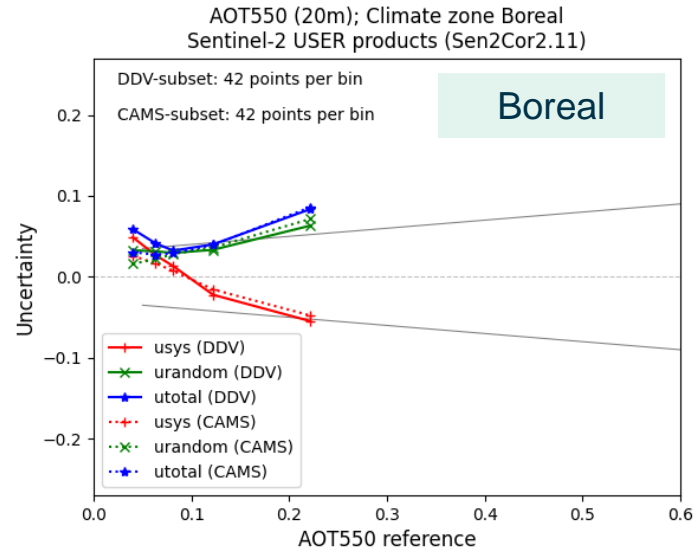
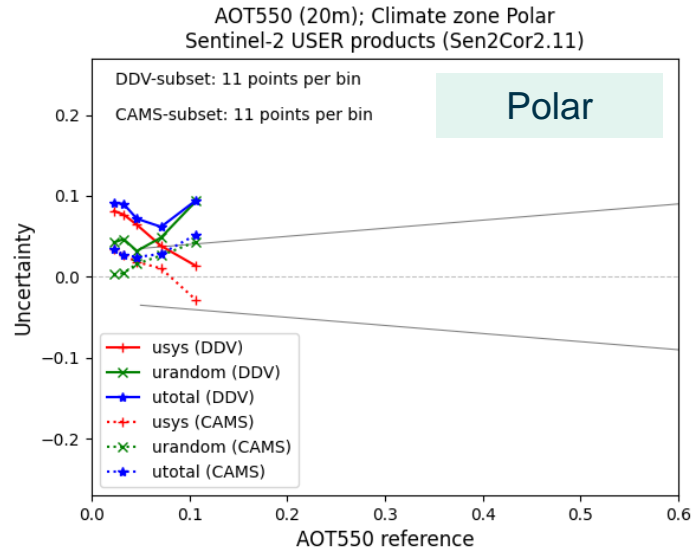
DDV compared with CAMS: Detailed results



PROGRAMME OF THE EUROPEAN UNION



co-funded with





Conclusions

- ❖ Uncertainty of AOT retrieval for complete data set: $0.03 < U_{total} < 0.25$
- ❖ Uncertainty of AOT retrieval for DDV subset: $0.03 < U_{total} < 0.15$
- ❖ Uncertainty for Europe almost within specification $U < 0.1 * AOT_{550} + 0.03$

- ❖ Direct comparison DDV <-> CAMS
 - ❖ CAMS has lower U_{sys} ; U_{total}
 - ❖ DDV has lower U_{random}
 - ❖ DDV has the potential to better represent spatial variations

Sen2Cor processor



ATBD version 2.10



monthly L2A Data Quality Reports:



Funded by the EU and ESA



European Union



OPT-MPC



Thank you!

Sen2Cor configuration: force to CAMS processing



PROGRAMME OF THE
EUROPEAN UNION



co-funded with



L2A_CAL_AC_GIPP_batch.xml

```
<?xml version="1.0" encoding="UTF-8"?>
<Level-2A_CAL_AC_Ground_Image_Processing_Parameter
xmlns:xsi="http://www.w3.org/2001/XMLSchema-instance"
xsi:noNamespaceSchemaLocation="L2A_CAL_AC_GIPP.xsd">
  <Flags>
  ...
  ...
  ...
  </Flags>
  <References>
  <Lib_Dir>lib</Lib_Dir>
  </References>
  <Sensor>
  ...
  ...
  ...
  </Sensor>
  <ACL_Prio_1>
  <AC_Min_Ddv_Area>100.0</AC_Min_Ddv_Area>
  <AC_Swir_Refl_Lower_Th>0.01</AC_Swir_Refl_Lower_Th>
  <AC_Swir_22um_Red_Refl_Ratio>0.5</AC_Swir_22um_Red_Ref
  ...
  ...
  ...
```

