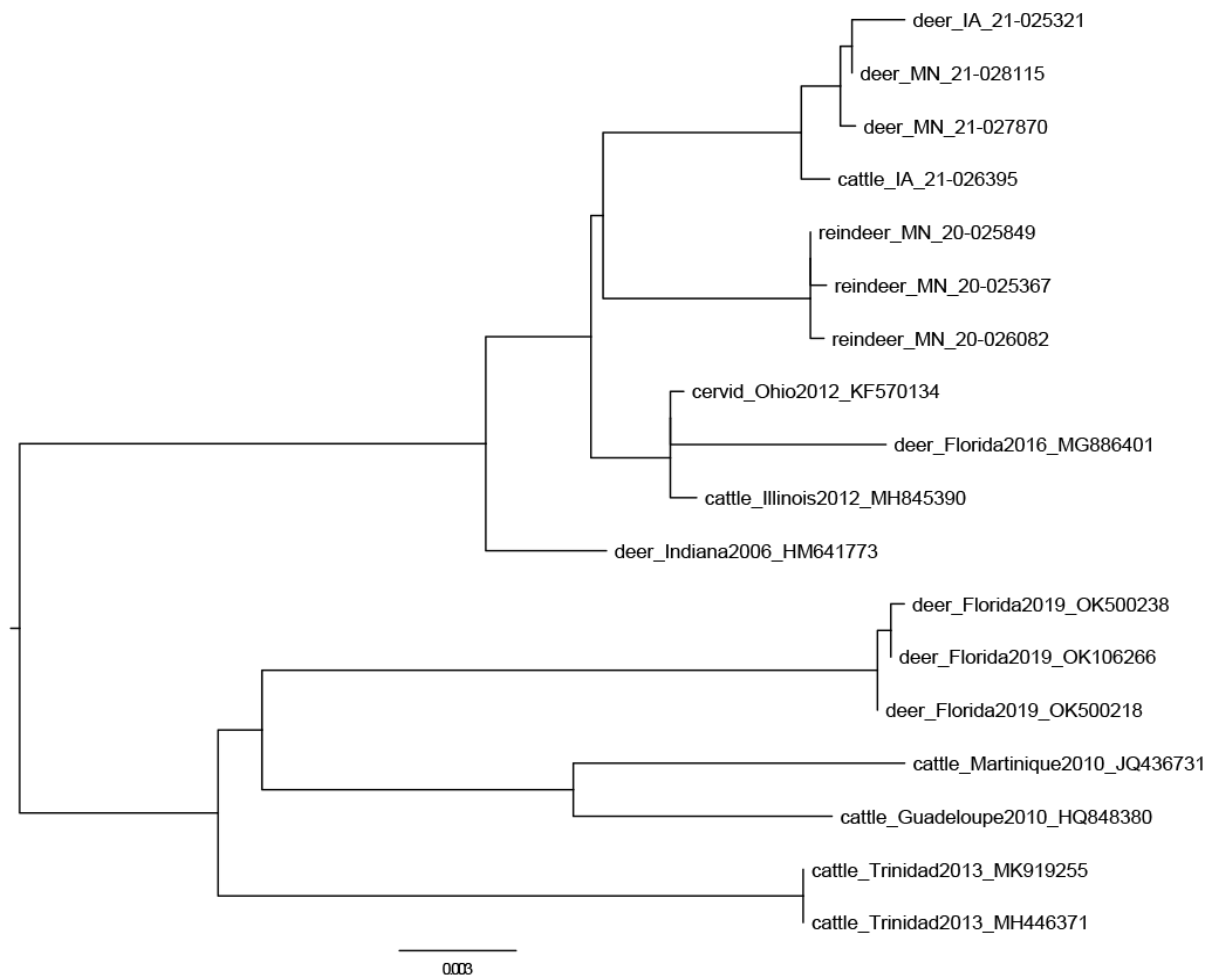


Supplemental Materials

Outbreak of Epizootic Hemorrhagic Disease in Captive Reindeer (*Rangifer tarandus*)

Emma H. Torii, Arno Wünschmann, Mia Kim Torchetti, Leo Koster, Albert van Geelen, Randy Atchison, Anne Rivas

Supplemental Figure S1. Phylogenetic tree constructed by comparing 2426 nucleotide of the VP2 gene using RAxML with the GTR GAMMA nucleotide model.



Supplemental Table S1. Percent nucleotide identity of the study sequence compared with one another and with an epizootic hemorrhagic disease virus serotype 6 strain isolated from an Ohio deer (KF570134.1).

Animal number	Genbank accession	% Identity	2	3	4
2	KF570134.1	99.02	100	99.91	99.87
3	KF570134.1	99.04		100	99.92
4	KF570134.1	99.13			100

Supplemental Table S2. Serologic results for virus neutralization and agar gel immunodiffusion (AGID) for epizootic hemorrhagic disease virus for the four reindeer.

Animal number	Date collected	Virus neutralization titer			AGID
		EHDV-1	EHDV-2	EHDV-6	
1	12-May-2020	NEG	NEG	NEG	NEG
	20-Aug-2020	10	40	20	POS
	27-Aug-2020	NEG	160	40	POS
2	03-Aug-2020	NEG	NEG	NEG	NEG
3	04-Sep-2020	10	40	40	POS
4	10-Sep-2020	10	40	80	POS

EHDV-1 = epizootic hemorrhagic disease virus serotype 1; EHDV-2 = epizootic hemorrhagic disease virus serotype 2; EHDV-6 = epizootic hemorrhagic disease virus serotype 6; NEG = negative; POS = positive; AGID = agar gel immunodiffusion.