

Robust Circuitry-Based Scores of Structural Importance of Human Brain Areas

Dániel Hegedűs^a, Vince Grolmusz^{a,b,*}

^a*PIT Bioinformatics Group, Eötvös University, H-1117 Budapest, Hungary*

^b*Uratim Ltd., H-1118 Budapest, Hungary*

Abstract

We consider the 1015-vertex human consensus connectome computed from the diffusion MRI data of 1064 subjects. We define seven different orders on these 1015 graph vertices, where the orders depend on parameters derived from the brain circuitry, that is, from the properties of the edges (or connections) incident to the vertices ordered. We order the vertices according to their degree, the sum, the maximum, and the average of the fiber counts on the incident edges, and the sum, the maximum and the average length of the fibers in the incident edges. We analyze the similarities of these seven orders by the Spearman correlation coefficient and by their inversion numbers and have found that all of these seven orders have great similarities. In other words, if we interpret the orders as scoring of the importance of the vertices in the consensus connectome, then the scores of the vertices will be similar in all seven orderings. That is, important vertices of the human connectome typically have many neighbors, connected with long and thick axonal fibers (where thickness is measured by fiber numbers), and their incident edges have high maximum and average values of length and fiber-number parameters, too. Therefore, these parameters may yield robust ways of deciding which vertices are more important in the anatomy of our brain circuitry than the others.

Running head: Circuitry-Based Scores of Human Brain Areas

Keywords: Connectome; importance of cerebral areas; brain circuitry

Introduction

Identifying the most important nodes in large networks solely from their graph-theoretical properties was an important problem in the late 1990s, applied

*Corresponding author

Email addresses: hegedus@pitgroup.org (Dániel Hegedűs), grolmusz@pitgroup.org (Vince Grolmusz)

in scoring the web search engine hits. The most well-known solutions, the PageRank of Google [1] and the HITS algorithm of Kleinberg [2], fundamentally influenced the related areas.

Both the PageRank and the HITS algorithms score the nodes of a directed, unweighted graph, originally corresponded to the graph of the World Wide Web, but later, those algorithms were successfully applied for directed and undirected biological, social and chemical graphs, among other applications [3, 4, 5, 6].

Since all human activities are governed by the cooperation of the cells in our brain, the study of the connections of these cells has specific interest. Unfortunately, the connections of the 80 billion neurons of the human brain are not mapped yet, and will not be mapped in the foreseeable future: to date, the only adult organism with completely mapped connections between its neurons (also called the connectome or braingraph) is the nematode *C. elegans*, having only 302 neurons [7]. Recently, after many years of concentrated efforts, the neuronal-level connectome of a part of the brain of the adult fruit fly *Drosophila melanogaster*, its central brain, is mapped and published [8]. Out of the 100,000 neurons of the fruit fly, the central brain contains around 25,000 neurons. The whole *Drosophila melanogaster* connectome is not published yet.

Instead of the neuronal-level connections, the imaging methods are capable today of mapping the human connectome on a much coarser scale than the level of the neurons. Due to the technical developments of magnetic resonance imaging (MRI) in the last fifteen years [9, 10], today we can map the macroscopic connections between 1000 anatomically identified brain areas. These developments have opened up a new area of brain science called “connectomics”, which examines the connections between the brain areas, and, instead of comparing the volumes of brain areas between healthy or diseased, old and young, male or female subjects, as in hundreds of previous cerebral volumetric studies, it concentrates to a more central question: the connections between those areas.

Our research group has studied the mathematical properties of human connectomes by applying strict graph-theoretical methods, terms, and approaches. We have used the public release imaging data sets of the Human Connectome Project [11], and prepared publicly available braingraphs from the imaging data, downloadable at the address <https://braingraph.org> in five different resolutions [12, 13, 14, 15]. The vertices of the braingraphs correspond to the anatomically identified areas of the cortical and sub-cortical gray matter, and two of the vertices are connected by an edge if the tractography phase [16, 17] of the processing identified axonal fibers between the areas, mapped to the vertices.

Using the exact methods and deep algorithms and approaches of graph theory, we have discovered numerous connectomical properties, related to the human sex differences [18, 19, 20, 21, 22], early brain development [23, 24, 25, 13], different lobal structures and organizations [26, 27, 28], and frequent edge sets in the whole brain or only those which are adjacent to the hippocampus [29, 30, 31, 32].

In the present contribution, we consider an averaged consensus connectome, computed from the imaging data of 1064 subjects, and we order the vertices of the consensus braingraph, intended to catch their order of “importance” and

compare the order of vertices in those lists. Our main result is that orders generated from the

- degree of the nodes,
- the sum of the numbers,
- the maximum number,
- and the average number of fibers in the incident edges,
- the sum of the fiber lengths,
- the maximum fiber length,
- the average fiber length in the incident edges

are similar to one another, their Spearman’s rank correlation is high, and their inversion numbers are low.

This result means that ordering by any of the seven parameters above produces similar orders of the nodes, where the “similar” word is explained in detail later in this work.

In other words, the result can be interpreted that the most important nodes in our braingraph statistically have numerous and long incident axonal fibers, with high maximum and averaged values either for the length or for the fiber numbers. That is, if a node is in front of others in one of the seven parameters above, then, typically, it will have high values in the remaining six parameters, too. Therefore, all of these seven orders are robust in comparison with the other six ones.

In what follows, we describe precisely our methods and results.

Methods

Graph construction

The data source of the present work is the 1200-subject public release of the Human Connectome Project [11]. The 3 Tesla diffusion magnetic resonance imaging data were processed with the help of the Connectome Mapper Tool Kit [16].

We have computed five different graphs for each subject with 83, 129, 234, 463, and 1015 nodes, where each node corresponded to an anatomic area of the cortical- and sub-cortical gray matter. The parcellation tool FreeSurfer was applied here [33, 34, 17].

The details of the workflow we followed are described in [14]. Concisely, the axonal fibers were mapped by the MRtrix 0.2 tractography software, and repeated ten times for each subject. We connected two graph vertices, which corresponded to two gray matter areas, by an edge if, in all the 10 runs, axonal fibers were found running between the two areas. In this case, the maximum and the minimum number of fibers were deleted, and the remaining eight integer

values were averaged and assigned to the edge as the fiber number weight. The length of the edge is also determined as the average length of the defining fibers. Consequently, all graph edges carry a positive weight (meaning the average of 8 fiber numbers) and a positive length (in millimeters).

Next, we constructed one single consensus graph on 1015 vertices from the 1064 individual graphs as follows. We have averaged the weight and the length for each edge, but we have followed different strategies. For averaging the weight, we added up the edge weight in all subject's graph and divided the sum by 1064; if an edge was not present in a subject, then we counted it as an edge with (an artificial) weight of 0. In the case of computing the average length, we counted the existing edges and divided the length-sum by this integer (for vertex pairs, which do not appear as an edge, 0 lengths were assigned).

Consequently, if $\#\{i, j\}$ denotes the number of appearance of edge $\{i, j\}$, and $s_{i,j,k}$ and $h_{i,j,k}$ denote in subject k the weight and the length of edge $\{i, j\}$, respectively, then

$$s_{i,j} = \frac{1}{1064} \sum_{k=1}^{1064} s_{i,j,k} \quad (1)$$

$$h_{i,j} = \frac{1}{\#\{i, j\}} \sum_{k=1}^{1064} h_{i,j,k} \quad (2)$$

We note that our earlier works [35, 36] also describe parameterizable consensus graphs by user-selectable parameters at the website of the Budapest Reference Connectome <https://pitgroup.org/connectome>. In contrast, the dataset of the present contribution is a static graph.

Ordering the nodes

Here we consider seven different orders on the set of the 1015 vertices of our consensus graph, with abbreviations:

- by the degree of the nodes (Degree);
- by the sum of the number of fibers in the incident edges (SUM-weight);
- by the maximum number of fibers in the incident edges (MAX-weight);
- by the average number of fibers in the incident edges (AVG-weight);
- by the sum of the fiber lengths in the incident edges (SUM-length);
- by the maximum fiber length in the incident edges (MAX-length);
- by the average fiber length in the incident edges (AVG-length).

The orders are defined by the decreasing values of these parameters.

The Degree describes the number of the incident edges, i.e., more important nodes are believed to be connected to many other nodes, so, consequently, their degree should be larger than the degree of the less important nodes.

SUM-weight is the weighted version of the Degree parameter. Here the fiber numbers of the incident edges are added up. Edges with higher fiber number or weight may connect more small gray matter areas than those with less weight. Consequently, we think that the SUM-weight parameter is more relevant in deciding the importance of a node than just the Degree.

MAX-weight – in a certain sense – is a simplification of the SUM-weight parameter. It describes only the weight of the largest-weight incident edge instead of adding up all the weights of the incident edges. Theoretically, it may happen that the ordering according to the MAX-weight differs a lot from the order defined by SUM-weight if, in many vertices, the incident edges have a small number of large a large number of small weights. It turns out later that in the case of our graph, it is not true; the orders are similar.

AVG-weight: Clearly, for each vertex, the Degree times AVG-weight is the SUM-weight. Therefore, the AVG-weight-based vertex-order may differ strongly from both the Degree-order and the SUM-weight order. As we show, the AVG-weight based order is also similar to the Degree and to the SUM-weight order.

SUM-length is the length-weighted version of the Degree. The Degree and the SUM-length values may differ a lot if a node is adjacent to many other vertices by short edges or few other nodes but with very long edges. If an important node usually has numerous and long incident edges, then the orders by Degree and SUM-length would not differ a lot. We show that in the case of our consensus braingraph, this is the situation.

MAX-length can be large, while SUM-length is small, so the order according to these parameters can be different in numerous positions. We show that this is not the case in our graph.

AVG-length times the Degree is the SUM-length for each vertex. Therefore, the AVG-length-based order can strongly differ from both the Degree and the SUM-length based order. We show the opposite for the case of the consensus braingraph.

The seven orders are explicitly given in the Appendix.

In the following subsections, we introduce two tools for the analysis of the similarity of these orders: the Spearman correlation and the inversion numbers.

Spearman's rank correlation coefficient

The Spearman ρ coefficient [37] is an ideal tool for comparing different orders on the same base set. In our case, the base set is the set of vertices, and the seven different orders are defined by the seven parameters Degree, SUM-weight, MAX-weight, AVG-weight, SUM-length, MAX-length, and AVG-length.

The ρ coefficient gives information about the correlation of two attributes, using the two orderings by the two attributes of the elements. Two indices are associated with every element, telling what its index is in the given ordering. There is a simple equation that calculates the coefficient if the indices are unique, meaning that no two attributes are the same. (Luckily, this is true for the consensus braingraph.) If we calculate two attributes of n elements and d_i is

the difference of the i -th element's two indices, then:

$$\rho = 1 - \frac{6 \cdot \sum_{i=1}^n d_i^2}{n^3 - n} \quad (3)$$

The value of Spearman's correlation coefficient ρ satisfies $-1 \leq \rho \leq 1$, where $\rho = 1$ means the perfect correlation and $\rho = -1$ means the perfect opposition.

Remark 1. *The bounds for ρ can be proven by using the cubic formula for the sum of the first n square numbers: $\frac{n(n+1)(2n+1)}{6}$. In the case of perfect opposition, we should calculate the sum of the first $\frac{n}{2}$ odd square numbers. This can easily be acquired from the sum of (not counted) even square numbers, as this is exactly four times the sum of the first that many square numbers.*

Remark 2. *The closer the coefficient ρ is to 0, the less we can say about the predicted correlation. As n grows, the coefficients with smaller absolute values can also be significant. So the p -value is not only defined by ρ , but it also depends on n . The acquired p -value is the probability of the correlation being that extreme under the assumption that the null hypothesis is true.*

Inversion numbers

Definition 1. *In two given permutations of n elements, two different elements are in inversion with each other if their order is opposite in the permutations.*

Definition 2. *Two permutations' inversion number is the number of (not ordered) pairs of elements which are in inversion. An element's inversion is the number of elements with which it is in inversion.*

Lemma 3. *The expected value of the inversion number of two permutations of length n is $\frac{n(n-1)}{4}$.*

Proof. Look at an arbitrary unordered $\{i, j\}$ pair of elements. Because of symmetric reasoning, the expected value of the contribution of this pair to the inversion number is $\frac{1}{2}$. (As every permutation has a bijective pair which differs only in the (i, j) transposition. Transposition is the function that only swaps two elements in a permutation.) Since $\binom{n}{2} = \frac{n(n-1)}{2}$ unordered pair of elements exist in the set of n elements, by using the linearity of the expectation, we get that the expected value of the inversion number is the desired $\frac{1}{2} \cdot \frac{n(n-1)}{2} = \frac{n(n-1)}{4}$. \square

Corollary 4. *The expected value of the inversion of any element is $\frac{n-1}{2}$.*

Proof. The linearity of the expected value can be used again, but now for the result of Lemma 1. As there are n elements and each inversion is counted twice (for both elements of the pair), the expected value by elements is $\frac{n(n-1)}{4} \cdot \frac{2}{n} = \frac{n-1}{2}$. \square

Alternative proof. Make a bijection between the permutations: the pair of a permutation is the opposite permutation. In every pair of permutations, every unordered pair of elements $\{i, j\}$ has each of its two orderings in exactly one of

the members of the permutation pair. So for every element i , there are $n - 1$ different j elements, and the expected value of their inversion one-by-one is $\frac{1}{2}$. So the expected value of the inversion of the arbitrary element i is $\frac{n-1}{2}$. \square

Discussion and Results

Spearman-correlations of different orderings

Correlations with the degree

	Degree					
	SUM-weight	MAX-weight	AVG-weight	SUM-length	MAX-length	AVG-length
ρ	0.88	0.84	0.79	0.98	0.51	0.76
p	0.0	10^{-278}	10^{-220}	0.0	10^{-68}	10^{-194}

Table 1 Spearman-correlations between the Degree-based and the six other orders.

The first row contains the ρ coefficients, and the second the significance-characterizing p values. We note that the weakest correlation in the case of MAX-length is still very far from 0, and its p-value is very small.

Correlations with SUM-weight and MAX-weight

	SUM-weight			MAX-weight		
	SUM-length	MAX-length	AVG-length	SUM-length	MAX-length	AVG-length
ρ	0.86	0.42	0.63	0.83	0.41	0.62
p	10^{-302}	10^{-45}	10^{-112}	10^{-262}	10^{-43}	10^{-110}

Table 2 Spearman-correlations between the SUM-weight and MAX-weight orders and the three length-based orders. The first row contains the ρ coefficients, the second the significance-characterizing p-values. We note that the weakest correlations in the case of MAX-length are still very far from 0, and their p-values are very small.

Correlations with AVG-weight

	AVG-weight		
	SUM-length	MAX-length	AVG-length
ρ	0.77	0.37	0.54
p	10^{-199}	10^{-33}	10^{-79}

Table 3 Spearman-correlations between the AVG-weight order and the three length-based orders. The first row contains the ρ coefficients, the second the significance-characterizing p values. We note that the weakest correlation in the case of MAX-length is still very far from 0, and its p-value is very small.

Correlations between weight-weight and length-length orders

	weight based orders			length based orders		
	SUM-MAX	SUM-AVG	MAX-AVG	SUM-MAX	SUM-AVG	MAX-AVG
ρ	0.97	0.98	0.96	0.58	0.86	0.70
p	0.0	0.0	0.0	10^{-91}	10^{-296}	10^{-148}

Table 4 Spearman correlations and p-values between the weight-weight based and the length-length-based orders. All the correlations are high, and the lowest value belongs to the SUM-length vs. MAX-length correlations.

A simple control

For a simple control, we have computed the Spearman correlation between two obviously unrelated orders. Namely, we have taken the ordinal numbers of the vertices assigned by the parcellation software and the AVG-weight-defined order. The ordinal numbers are assigned in the way that around the first 500 numbered vertices are situated in the left and the second 500 vertices in the right hemisphere of the brain, in the same order. For these two orders $\rho = 0.01$ and $p = 0.65$, therefore, our results in Tables 1-4 present a biological rule.

Analysis of the order-similarity by inversion numbers

In the Methods section, we have defined the inversion numbers and listed some of their fundamental properties. Here we present a graphical evaluation of the inversion numbers between the pairs of the seven orders studied by the Spearman correlation in the previous section.

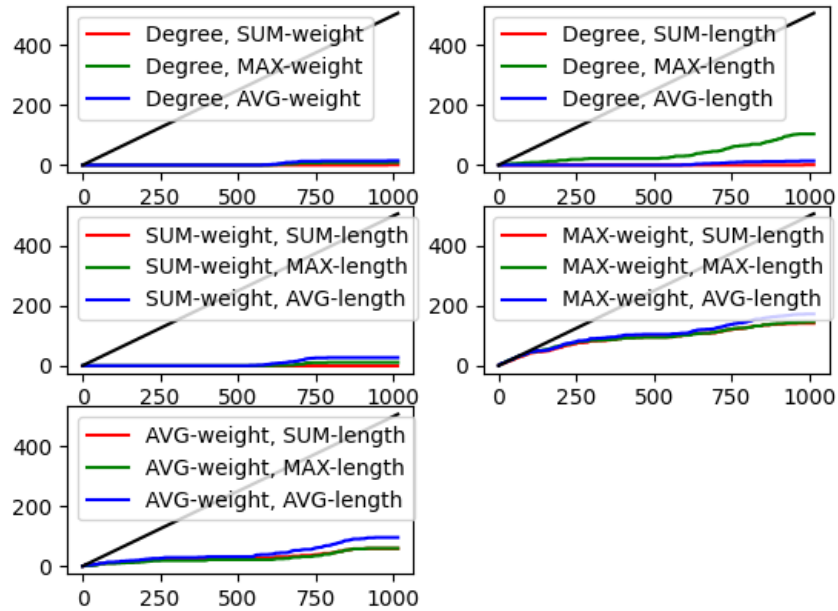


Figure 1: The number of vertices with high inversion-numbers according to distinct parameter-pairs. Point n on axis x correspond to the most important n vertices in one of the pair-defined orders, while the height (i.e. the y coordinate) of the point correspond to the number with higher-than-expectation inversion number between the most important n pairs of orderings. On each panel the black line shows the $n/2$ expectation. It is easy to see on all panels that the higher-than-expectation inversion numbers appear in very few pairs, almost independently from the examined pairs of orderings.

Conclusions

We have analyzed the order of vertex-importance in the anatomically labeled consensus graph of the human brain, defined by circuitry-based parameters of the vertices: the degree (Degree), and the following parameters, computed on the incident edges for the vertex: Sum of fiber counts (SUM-weight), Max of fiber counts (MAX-weight), Average of fiber counts (AVG-weight), Sum of fiber lengths (SUM-length), Max of fiber lengths (MAX-length) and the Average of fiber lengths (AVG-length). For the analysis, we have used the Spearman correlation coefficient and the inversion numbers between the orders. We have found that the seven orders of vertex importance, defined by these seven circuitry-based parameters of the vertices, have a great similarity: i.e., the most important vertices - statistically - have many neighbors, connected with long and numerous fibers. We also have shown that orders defined by the maximum weight or length of the incident edges or the orders defined by the average weight or length of the incident edges do not differ very much from the orders defined by the sum of these parameters.

The results show the robustness of the orders by these seven parameters and also shows that vertex-importance in the human brain can be characterized by numerous parameters, but the list of the important vertices (or anatomical brain areas) will not be changed much.

References

- [1] Sergey Brin and Lawrence Page. The anatomy of a large-scale hypertextual web search engine. *Computer Networks and ISDN Systems*, 30:107–117, 1998.
- [2] Jon M. Kleinberg. Authoritative sources in a hyperlinked environment. In *Proceedings of the Ninth Annual ACM-SIAM Symposium on Discrete Algorithms*, pages 668–677, San Francisco, California, 25–27 January 1998. ACM Press.
- [3] Gábor Iván and Vince Grolmusz. When the web meets the cell: using personalized pagerank for analyzing protein interaction networks. *Bioinformatics*, 27(3):405–407, 2011.
- [4] Vince Grolmusz, Gabor Ivan, Daniel Banky, and Balazs Szerencsi. How to find non hub important nodes in protein networks? *Biophysical Journal*, 102(3):184a, 2012.
- [5] Dániel Bánky, Gábor Iván, and Vince Grolmusz. Equal opportunity for low-degree network nodes: a pagerank-based method for protein target identification in metabolic graphs. *PLoS One*, 8(1):e54204, 2013.
- [6] Vince Grolmusz. A note on the pagerank of undirected graphs. *Information Processing Letters*, 115(6):633–634, 2015.

- [7] JG White, E Southgate, JN Thomson, and S Brenner. The structure of the nervous system of the nematode *Caenorhabditis elegans*: the mind of a worm. *Phil. Trans. R. Soc. Lond.*, 314:1–340, 1986.
- [8] Lousis Scheffer, Shan Xu, Michal Januszewski, and Zhiyuan Lu et al. A connectome and analysis of the adult drosophila central brain. *eLife*, 9, 2020. doi: 10.7554/eLife.57443. URL <https://doi.org/10.7554/eLife.57443>.
- [9] Patric Hagmann, Leila Cammoun, Xavier Gigandet, Reto Meuli, Christopher J. Honey, Van J. Wedeen, and Olaf Sporns. Mapping the structural core of human cerebral cortex. *PLoS Biol*, 6(7):e159, Jul 2008. doi: 10.1371/journal.pbio.0060159. URL <http://dx.doi.org/10.1371/journal.pbio.0060159>.
- [10] Patric Hagmann, Patricia E. Grant, and Damien A. Fair. MR connectomics: a conceptual framework for studying the developing brain. *Front Syst Neurosci*, 6:43, 2012. doi: 10.3389/fnsys.2012.00043. URL <http://dx.doi.org/10.3389/fnsys.2012.00043>.
- [11] Jennifer A. McNab, Brian L. Edlow, Thomas Witzel, Susie Y. Huang, Himanshu Bhat, Keith Heberlein, Thorsten Feiweier, Kecheng Liu, Boris Keil, Julien Cohen-Adad, M Dylan Tisdall, Rebecca D. Folkerth, Hannah C. Kinney, and Lawrence L. Wald. The Human Connectome Project and beyond: initial applications of 300 mT/m gradients. *Neuroimage*, 80: 234–245, Oct 2013. doi: 10.1016/j.neuroimage.2013.05.074. URL <http://dx.doi.org/10.1016/j.neuroimage.2013.05.074>.
- [12] Csaba Kerepesi, Balazs Szalkai, Balint Varga, and Vince Grolmusz. The braingraph.org database of high resolution structural connectomes and the brain graph tools. *Cognitive Neurodynamics*, 11(5):483–486, 2017.
- [13] Balazs Szalkai, Csaba Kerepesi, Balint Varga, and Vince Grolmusz. High-resolution directed human connectomes and the consensus connectome dynamics. *PLoS ONE*, 14(4):e0215473, September 2019. URL <https://doi.org/10.1371/journal.pone.0215473>.
- [14] Balint Varga and Vince Grolmusz. The braingraph.org database with more than 1000 robust human structural connectomes in five resolutions. *Cognitive Neurodynamics*, 2021. URL <https://doi.org/10.1007/s11571-021-09670-5>.
- [15] Laszlo Keresztes, Evelin Szogi, Balint Varga, and Vince Grolmusz. Introducing and applying newtonian blurring: An augmented dataset of 126,000 human connectomes at braingraph.org. *Scientific Reports*. doi: 10.1038/s41598-022-06697-4. URL <https://www.nature.com/articles/s41598-022-06697-4>.

- [16] Alessandro Daducci, Stephan Gerhard, Alessandra Griffa, Alia Lemkadem, Leila Cammoun, Xavier Gigandet, Reto Meuli, Patric Hagmann, and Jean-Philippe Thiran. The connectome mapper: an open-source processing pipeline to map connectomes with MRI. *PLoS One*, 7(12):e48121, 2012. doi: 10.1371/journal.pone.0048121. URL <http://dx.doi.org/10.1371/journal.pone.0048121>.
- [17] J Tournier, Fernando Calamante, Alan Connelly, et al. Mrtrix: diffusion tractography in crossing fiber regions. *International Journal of Imaging Systems and Technology*, 22(1):53–66, 2012.
- [18] Balázs Szalkai, Bálint Varga, and Vince Grolmusz. Graph theoretical analysis reveals: Women’s brains are better connected than men’s. *PLoS One*, 10(7):e0130045, 2015. doi: 10.1371/journal.pone.0130045. URL <http://dx.doi.org/10.1371/journal.pone.0130045>.
- [19] Balázs Szalkai, Bálint Varga, and Vince Grolmusz. Brain size bias-compensated graph-theoretical parameters are also better in women’s connectomes. *Brain Imaging and Behavior*, 12(3):663–673, 2018. doi: 10.1007/s11682-017-9720-0. URL <http://dx.doi.org/10.1007/s11682-017-9720-0>.
- [20] Balázs Szalkai, Bálint Varga, and Vince Grolmusz. The graph of our mind. *Brain Sciences*, 11(3), 2021. URL <https://doi.org/10.3390/brainsci11030342>.
- [21] Laszlo Keresztes, Evelin Szogi, Balint Varga, and Vince Grolmusz. Identifying super-feminine, super-masculine and sex-defining connections in the human brain graph. *Cognitive Neurodynamics*, 15(6):949–959, 2021. URL <https://doi.org/10.1007/s11571-021-09687-w>.
- [22] Laszlo Keresztes, Evelin Szogi, Balint Varga, and Vince Grolmusz. Discovering sex and age impicator edges in the human connectome. *Neuroscience letters*, 791:136913, November 2022. ISSN 1872-7972. doi: 10.1016/j.neulet.2022.136913.
- [23] Csaba Kerepesi, Balazs Szalkai, Balint Varga, and Vince Grolmusz. How to direct the edges of the connectomes: Dynamics of the consensus connectomes and the development of the connections in the human brain. *PLOS One*, 11(6):e0158680, June 2016. URL <http://dx.doi.org/10.1371/journal.pone.0158680>.
- [24] Balázs Szalkai, Bálint Varga, and Vince Grolmusz. The robustness and the doubly-preferential attachment simulation of the consensus connectome dynamics of the human brain. *Scientific Reports*, 7(16118), 2017. doi: 10.1038/s41598-017-16326-0.
- [25] Csaba Kerepesi, Balint Varga, Balazs Szalkai, and Vince Grolmusz. The dorsal striatum and the dynamics of the consensus connectomes in the

- frontal lobe of the human brain. *Neuroscience Letters*, 673:51–55, March 2018. doi: 10.1016/j.neulet.2018.02.052.
- [26] Csaba Kerepesi, Balázs Szalkai, Bálint Varga, and Vince Grolmusz. Comparative connectomics: Mapping the inter-individual variability of connections within the regions of the human brain. *Neuroscience Letters*, 662(1): 17–21, 2018. doi: 10.1016/j.neulet.2017.10.003.
- [27] Balazs Szalkai, Balint Varga, and Vince Grolmusz. Comparing advanced graph-theoretical parameters of the connectomes of the lobes of the human brain. *Cognitive Neurodynamics*, 12(6):549–559, 2018.
- [28] Balazs Szalkai, Balint Varga, and Vince Grolmusz. Mapping correlations of psychological and connectomical properties of the dataset of the human connectome project with the maximum spanning tree method. *Brain Imaging and Behavior*, 13(5):1185–1192, feb 2019. doi: <https://doi.org/10.1007/s11682-018-9937-6>.
- [29] Mate Fellner, Balint Varga, and Vince Grolmusz. The frequent subgraphs of the connectome of the human brain. *Cognitive Neurodynamics*, 13(5): 453–460, 2019. URL <https://doi.org/10.1007/s11571-019-09535-y>.
- [30] Mate Fellner, Balint Varga, and Vince Grolmusz. The frequent network neighborhood mapping of the human hippocampus shows much more frequent neighbor sets in males than in females. *PLOS One*, 15(1):e0227910, 2020. URL <https://doi.org/10.1371/journal.pone.0227910>.
- [31] Máté Fellner, Bálint Varga, and Vince Grolmusz. The frequent complete subgraphs in the human connectome. *PloS One*, 15(8):e0236883, 2020. URL <https://doi.org/10.1371/journal.pone.0236883>.
- [32] Mate Fellner, Balint Varga, and Vince Grolmusz. Good neighbors, bad neighbors: The frequent network neighborhood mapping of the hippocampus enlightens several structural factors of the human intelligence on a 414-subject cohort. *Scientific Reports*, 10(11967), 2020. URL <https://doi.org/10.1038/s41598-020-68914-2>.
- [33] Bruce Fischl. Freesurfer. *Neuroimage*, 62(2):774–781, 2012.
- [34] Rahul S. Desikan, Florent Segonne, Bruce Fischl, Brian T. Quinn, Bradford C. Dickerson, Deborah Blacker, Randy L. Buckner, Anders M. Dale, R Paul Maguire, Bradley T. Hyman, Marilyn S. Albert, and Ronald J. Killiany. An automated labeling system for subdividing the human cerebral cortex on MRI scans into gyral based regions of interest. *Neuroimage*, 31(3):968–980, Jul 2006. doi: 10.1016/j.neuroimage.2006.01.021. URL <http://dx.doi.org/10.1016/j.neuroimage.2006.01.021>.
- [35] Balázs Szalkai, Csaba Kerepesi, Bálint Varga, and Vince Grolmusz. The Budapest Reference Connectome Server v2. 0. *Neuroscience Letters*, 595: 60–62, 2015.

- [36] Balazs Szalkai, Csaba Kerepesi, Balint Varga, and Vince Grolmusz. Parameterizable consensus connectomes from the Human Connectome Project: The Budapest Reference Connectome Server v3.0. *Cognitive Neurodynamics*, 11(1):113–116, feb 2017. doi: <http://dx.doi.org/10.1007/s11571-016-9407-z>.
- [37] Carl Spearman. The proof and measurement of association between two things. *The American Journal of Psychology*, 15(1):72–101. URL <https://doi.org/10.2307/1412159>.

Appendix

In this section we list the orderings of the 1015 vertices of our consensus braingraph by the examined weight parameters. The nodes are denoted by the cerebral areas, which they are corresponded to. The columns contain the orderings by different parameters, denoted in the column header.

Degree	Sum of fiber count (SUM-weight)	Max of fiber count (MAX-weight)	Average of fiber count (AVG-weight)	Sum of fiber length (SUM-length)	Max of fiber length (MAX-length)	Average of fiber length (AVG-length)
1 Left-Thalamus-Propor	Left-Caudate	Left-Caudate	Left-Caudate	Left-Thalamus-Propor	lh.superiorfrontal_11	rh.rostralmiddlefrontal_14
2 Right-Thalamus-Propor	Left-Thalamus-Propor	Left-Putamen	Left-Thalamus-Propor	Right-Thalamus-Propor	lh.superiorparietal_16	lh.rostralmiddlefrontal_5
3 Right-Caudate	Right-Caudate	Right-Caudate	Right-Caudate	Right-Caudate	lh.lateralorbitofrontal_1	lh.lateralorbitofrontal_5
4 Left-Caudate	Right-Thalamus-Propor	Right-Putamen	Left-Putamen	Left-Caudate	lh.superiorparietal_4	rh.superiorfrontal_2
5 Right-Putamen	Left-Putamen	Right-Thalamus-Propor	Right-Putamen	Right-Putamen	lh.medialorbitofrontal_5	lh.precuneus_20
6 Left-Putamen	Right-Putamen	Left-Thalamus-Propor	Right-Thalamus-Propor	Left-Putamen	lh.rostralmiddlefrontal_1	lh.superiorfrontal_32
7 Right-Hippocampus	Left-Hippocampus	lh.posteriorcingulate_6	Left-Hippocampus	Right-Hippocampus	lh.precuneus_17	lh.rostralmiddlefrontal_23
8 Left-Hippocampus	Right-Hippocampus	Left-Pallidum	Right-Hippocampus	lh.superiorparietal_25	lh.rostralmiddlefrontal_3	rh.insula_14
9 lh.superiorparietal_25	rh.caudalmiddlefrontal_11	Left-Hippocampus	rh.caudalmiddlefrontal_11	Right-Pallidum	lh.superiorparietal_19	rh.rostralmiddlefrontal_2
10 rh.insula_16	lh.superiorparietal_25	Right-Hippocampus	lh.lateraloccipital_3	Left-Hippocampus	rh.lateralorbitofrontal_14	lh.rostralmiddlefrontal_19
11 rh.posteriorcingulate_1	rh.superiorparietal_13	rh.posteriorcingulate_7	rh.lateraloccipital_3	Left-Pallidum	rh.superiorparietal_14	rh.caudalmiddlefrontal_6
12 rh.supramarginal_17	lh.caudalmiddlefrontal_13	lh.caudalmiddlefrontal_13	lh.pericalcarine_6	rh.posteriorcingulate_1	lh.superiorfrontal_8	rh.superiorfrontal_11
13 lh.insula_5	rh.supramarginal_17	Right-Pallidum	rh.lingual_6	rh.caudalmiddlefrontal_11	lh.precuneus_4	rh.rostralmiddlefrontal_24
14 Left-Pallidum	lh.superiorparietal_27	rh.caudalmiddlefrontal_11	rh.superiorparietal_13	lh.posteriorcingulate_5	lh.superiorparietal_25	rh.rostralmiddlefrontal_10
15 Right-Pallidum	lh.isthmuscingulate_2	lh.posteriorcingulate_4	rh.fusiform_2	lh.caudalmiddlefrontal_13	rh.rostralmiddlefrontal_24	lh.superiorfrontal_29
16 rh.posteriorcingulate_5	lh.precentral_6	rh.posteriorcingulate_1	lh.caudalmiddlefrontal_13	rh.posteriorcingulate_5	rh.fusiform_9	rh.caudalmiddlefrontal_10
17 lh.posteriorcingulate_5	lh.insula_5	lh.posteriorcingulate_2	lh.superiorparietal_25	rh.caudalanteriorcingulate_3	lh.medialorbitofrontal_4	rh.rostralmiddlefrontal_21
18 lh.posteriorcingulate_6	lh.supramarginal_16	lh.isthmuscingulate_3	lh.lateraloccipital_18	lh.superiorparietal_27	lh.superiorparietal_10	lh.superiorparietal_22
19 rh.posteriorcingulate_6	rh.lingual_6	rh.isthmuscingulate_5	lh.isthmuscingulate_2	rh.insula_10	lh.precuneus_13	lh.superiorfrontal_23
20 lh.superiorparietal_27	lh.posteriorcingulate_6	lh.supramarginal_16	lh.superiorparietal_27	rh.insula_16	rh.lateraloccipital_17	rh.caudalmiddlefrontal_9
21 rh.caudalanteriorcingulate_3	rh.isthmuscingulate_5	lh.caudalanteriorcingulate_1	rh.lateraloccipital_5	lh.posteriorcingulate_6	lh.precuneus_20	lh.parsopercularis_7
22 lh.isthmuscingulate_4	rh.superiorparietal_24	lh.superiorparietal_27	rh.supramarginal_17	rh.superiorparietal_24	lh.rostralmiddlefrontal_7	lh.superiorfrontal_44
23 rh.superiorparietal_13	rh.insula_13	lh.isthmuscingulate_2	rh.lateraloccipital_15	rh.superiorparietal_22	lh.lateralorbitofrontal_13	rh.caudalmiddlefrontal_1
24 rh.superiorparietal_24	rh.lateraloccipital_3	lh.isthmuscingulate_4	lh.precuneus_15	rh.caudalmiddlefrontal_10	lh.precuneus_19	lh.parsopercularis_6
25 rh.caudalmiddlefrontal_11	lh.caudalmiddlefrontal_5	lh.posteriorcingulate_1	lh.precentral_6	rh.posteriorcingulate_6	rh.rostralmiddlefrontal_12	lh.caudalmiddlefrontal_9
26 rh.insula_13	lh.precuneus_15	rh.posteriorcingulate_2	rh.pericalcarine_1	rh.superiorparietal_13	rh.superiorparietal_10	rh.insula_10
27 lh.supramarginal_16	rh.inferiorparietal_20	rh.posteriorcingulate_5	rh.superiorfrontal_28	lh.posteriorcingulate_8	rh.pericalcarine_2	rh.insula_8
28 rh.inferiorparietal_18	lh.pericalcarine_6	lh.precentral_6	lh.pericalcarine_4	rh.supramarginal_17	rh.precuneus_16	rh.rostralmiddlefrontal_18
29 lh.caudalmiddlefrontal_13	Right-Pallidum	lh.posteriorcingulate_5	lh.inferiortemporal_7	rh.insula_11	rh.parsorbitalis_3	rh.rostralmiddlefrontal_23
30 lh.posteriorcingulate_8	rh.supramarginal_11	lh.superiorparietal_25	lh.supramarginal_16	rh.inferiorparietal_13	rh.superiorparietal_15	lh.precuneus_4
31 lh.posteriorcingulate_2	rh.precentral_7	lh.caudalanteriorcingulate_3	lh.fusiform_17	rh.superiorparietal_14	rh.lingual_4	rh.caudalmiddlefrontal_7
32 rh.inferiorparietal_13	Left-Pallidum	lh.posteriorcingulate_8	lh.lingual_2	lh.superiorparietal_16	rh.rostralmiddlefrontal_3	lh.superiorparietal_19
33 lh.posteriorcingulate_1	lh.precuneus_12	rh.superiorparietal_13	rh.precentral_7	lh.posteriorcingulate_2	rh.rostralmiddlefrontal_22	lh.superiorparietal_25
34 rh.supramarginal_19	lh.lateraloccipital_3	rh.posteriorcingulate_6	lh.insula_5	lh.supramarginal_16	rh.fusiform_2	Right-Pallidum
35 lh.precuneus_12	lh.inferiorparietal_21	rh.posteriorcingulate_9	rh.isthmuscingulate_5	lh.isthmuscingulate_4	rh.superiorparietal_9	rh.parsopercularis_9
36 rh.isthmuscingulate_5	rh.supramarginal_19	lh.pericalcarine_6	rh.inferiorparietal_20	lh.caudalanteriorcingulate_2	lh.lateralorbitofrontal_5	Right-Thalamus-Propor
37 lh.inferiorparietal_20	rh.lateraloccipital_5	lh.lateraloccipital_18	lh.fusiform_17	lh.precuneus_12	lh.medialorbitofrontal_7	rh.insula_9
38 lh.isthmuscingulate_2	rh.bankssts_1	Brain-Stem	lh.caudalmiddlefrontal_5	rh.caudalmiddlefrontal_6	rh.rostralmiddlefrontal_2	rh.caudalmiddlefrontal_11
39 rh.isthmuscingulate_1	lh.isthmuscingulate_3	lh.caudalanteriorcingulate_2	lh.supramarginal_11	rh.caudalmiddlefrontal_5	rh.superiorparietal_11	lh.caudalmiddlefrontal_4
40 rh.insula_10	rh.insula_11	lh.isthmuscingulate_3	lh.lingual_7	lh.insula_5	rh.rostralmiddlefrontal_6	lh.superiorfrontal_21
41 lh.inferiorparietal_21	rh.precentral_20	rh.insula_16	rh.superiorparietal_24	lh.posteriorcingulate_1	rh.superiorparietal_22	rh.superiorfrontal_14
42 rh.insula_11	rh.supramarginal_5	rh.caudalanteriorcingulate_3	lh.posteriorcingulate_6	lh.inferiorparietal_20	lh.superiorfrontal_21	rh.rostralmiddlefrontal_22
43 lh.caudalanteriorcingulate_2	rh.precentral_19	lh.insula_5	rh.pericalcarine_2	rh.isthmuscingulate_5	lh.precuneus_6	lh.rostralmiddlefrontal_4
44 lh.insula_16	lh.lateraloccipital_18	lh.inferiorparietal_21	rh.precentral_20	rh.parsopercularis_9	rh.parsorbitalis_1	lh.rostralmiddlefrontal_26

45 lh.posteriorcingulate_9	rh.inferioparietal_18	rh.caudalanteriorcingulate_2	lh.lateraloccipital_23	rh.caudalmiddlefrontal_1	rh.caudalmiddlefrontal_6	lh.rostralmiddlefrontal_3
46 lh.precentral_6	rh.posteriorcingulate_1	rh.isthmuscingulate_1	lh.lingual_14	rh.insula_13	lh.rostralmiddlefrontal_14	lh.superioparietal_10
47 rh.precuneus_20	lh.insula_2	rh.parsopercularis_2	rh.lateraloccipital_7	rh.inferioparietal_18	rh.rostralmiddlefrontal_14	rh.parsopercularis_6
48 lh.isthmuscingulate_6	rh.posteriorcingulate_6	rh.posteriorcingulate_3	lh.isthmuscingulate_3	rh.insula_1	rh.lingual_5	rh.inferioparietal_16
49 lh.superioparietal_16	lh.inferioparietal_20	lh.isthmuscingulate_6	rh.insula_13	rh.rostralmiddlefrontal_21	lh.precuneus_7	rh.superioparietal_15
50 rh.isthmuscingulate_4	rh.caudalmiddlefrontal_10	rh.caudalanteriorcingulate_5	rh.lateraloccipital_23	lh.insula_15	Left-Hippocampus	Left-Thalamus-Proper
51 rh.superioparietal_22	rh.inferioparietal_13	rh.supramarginal_11	rh.precentral_19	rh.precuneus_20	rh.rostralmiddlefrontal_5	lh.rostralmiddlefrontal_9
52 rh.bankssts_1	rh.precuneus_20	rh.precuneus_6	rh.supramarginal_5	rh.inferioparietal_21	lh.precuneus_11	lh.superiorfrontal_8
53 rh.isthmuscingulate_3	lh.posteriorcingulate_5	rh.supramarginal_19	rh.superiorfrontal_22	rh.inferioparietal_8	rh.rostralmiddlefrontal_26	lh.superiorfrontal_11
54 lh.caudalmiddlefrontal_5	rh.insula_16	rh.lateraloccipital_3	rh.inferiortemporal_13	rh.inferioparietal_13	rh.superioparietal_13	lh.caudalmiddlefrontal_3
55 lh.superioparietal_13	lh.inferiortemporal_7	rh.lingual_6	rh.lingual_4	lh.caudalanteriorcingulate_3	lh.lateralorbitofrontal_7	rh.inferioparietal_1
56 rh.caudalmiddlefrontal_10	lh.isthmuscingulate_4	lh.superiorfrontal_44	rh.pericalcarine_7	rh.parsopercularis_2	lh.precuneus_5	rh.rostralmiddlefrontal_3
57 rh.superioparietal_14	lh.precentral_15	rh.caudalmiddlefrontal_10	rh.inferioparietal_22	lh.precentral_15	lh.lateralorbitofrontal_8	lh.rostralmiddlefrontal_13
58 lh.supramarginal_15	rh.superiorfrontal_28	rh.inferioparietal_20	rh.bankssts_1	lh.inferioparietal_12	lh.precuneus_21	rh.rostralmiddlefrontal_20
59 rh.inferioparietal_21	rh.posteriorcingulate_7	rh.posteriorcingulate_8	lh.pericalcarine_5	lh.parsopercularis_6	lh.rostralmiddlefrontal_10	lh.caudalmiddlefrontal_8
60 rh.inferioparietal_12	lh.superiortemporal_24	lh.insula_2	lh.precuneus_12	rh.inferioparietal_17	lh.precuneus_22	lh.caudalmiddlefrontal_13
61 lh.caudalanteriorcingulate_3	lh.lingual_2	lh.insula_16	lh.inferioparietal_21	rh.inferioparietal_9	lh.lateralorbitofrontal_2	rh.inferioparietal_3
62 lh.inferioparietal_12	lh.inferioparietal_18	rh.isthmuscingulate_6	rh.precuneus_3	lh.precuneus_4	rh.lateraloccipital_3	lh.caudalmiddlefrontal_6
63 lh.precuneus_6	lh.superioparietal_13	rh.insula_10	lh.insula_2	lh.isthmuscingulate_2	rh.inferioparietal_15	rh.superiorfrontal_17
64 lh.precentral_15	lh.bankssts_4	rh.paracentral_8	lh.insula_11	rh.parsopercularis_6	rh.inferioparietal_25	lh.paracentral_7
65 lh.supramarginal_2	rh.insula_10	lh.caudalmiddlefrontal_9	rh.supramarginal_19	rh.inferioparietal_12	lh.lateralorbitofrontal_3	lh.superioparietal_24
66 rh.precuneus_10	rh.inferioparietal_22	rh.insula_13	rh.bankssts_2	lh.inferioparietal_9	lh.superiorfrontal_10	lh.superiorfrontal_41
67 rh.superioparietal_9	lh.supramarginal_15	lh.caudalanteriorcingulate_4	lh.lateraloccipital_5	lh.precuneus_6	rh.precuneus_20	lh.parsopercularis_1
68 rh.inferioparietal_8	rh.fusiform_2	rh.lateraloccipital_5	lh.superiorfrontal_2	rh.precuneus_10	lh.rostralanteriorcingulate_3	lh.rostralmiddlefrontal_22
69 rh.caudalanteriorcingulate_5	rh.caudalmiddlefrontal_6	lh.postcentral_31	rh.superiorfrontal_22	rh.caudalanteriorcingulate_5	lh.superiorfrontal_23	lh.parsotriangularis_2
70 rh.inferioparietal_20	rh.isthmuscingulate_3	rh.precentral_20	lh.inferioparietal_18	rh.supramarginal_19	lh.rostralmiddlefrontal_25	Left-Pallidum
71 lh.isthmuscingulate_5	lh.insula_14	rh.superioparietal_24	Right-Pallidum	lh.caudalmiddlefrontal_9	lh.superioparietal_12	lh.lateralorbitofrontal_1
72 lh.superiortemporal_24	rh.precuneus_6	rh.caudalmiddlefrontal_1	lh.lingual_8	rh.inferioparietal_14	rh.superiorfrontal_2	rh.precentral_29
73 lh.insula_2	rh.precuneus_3	lh.inferioparietal_18	lh.lingual_1	lh.rostralmiddlefrontal_4	rh.rostralmiddlefrontal_21	rh.insula_1
74 rh.parsopercularis_2	lh.caudalmiddlefrontal_10	lh.superiorfrontal_27	lh.lingual_6	rh.posteriorcingulate_7	rh.rostralmiddlefrontal_27	rh.superioparietal_14
75 lh.insula_15	lh.precuneus_6	lh.caudalmiddlefrontal_5	lh.bankssts_2	rh.isthmuscingulate_1	rh.precuneus_10	lh.superiorfrontal_14
76 rh.insula_1	lh.lingual_7	rh.caudalmiddlefrontal_6	lh.bankssts_4	rh.rostralmiddlefrontal_10	lh.parsotriangularis_2	lh.insula_15
77 rh.posteriorcingulate_7	lh.caudalanteriorcingulate_3	rh.superiorfrontal_38	lh.postcentral_7	rh.precentral_12	lh.superioparietal_1	rh.paracentral_2
78 rh.posteriorcingulate_2	lh.superiorfrontal_44	rh.superiorfrontal_28	rh.caudalmiddlefrontal_10	rh.isthmuscingulate_4	lh.superioparietal_24	lh.parsopercularis_9
79 rh.superioparietal_11	rh.parsopercularis_2	lh.precentral_15	lh.superiorfrontal_20	lh.inferioparietal_21	lh.rostralmiddlefrontal_8	rh.insula_7
80 rh.supramarginal_11	lh.lateraloccipital_23	rh.supramarginal_17	lh.superiorfrontal_44	rh.rostralmiddlefrontal_18	rh.precuneus_2	lh.rostralmiddlefrontal_10
81 rh.inferioparietal_17	rh.precentral_12	rh.inferioparietal_12	Left-Pallidum	lh.caudalmiddlefrontal_3	rh.isthmuscingulate_4	lh.caudalmiddlefrontal_1
82 rh.precuneus_6	lh.postcentral_7	rh.pericalcarine_1	lh.inferioparietal_20	lh.precuneus_13	rh.lateralorbitofrontal_15	lh.superioparietal_16
83 lh.inferioparietal_2	rh.paracentral_8	lh.rostralmiddlefrontal_4	rh.posteriorcingulate_7	lh.insula_4	rh.rostralmiddlefrontal_9	lh.paracentral_4
84 rh.supramarginal_5	lh.postcentral_31	rh.bankssts_1	rh.superiorfrontal_11	lh.precentral_6	lh.rostralmiddlefrontal_26	lh.caudalmiddlefrontal_11
85 rh.inferioparietal_14	rh.pericalcarine_1	lh.precentral_25	lh.caudalmiddlefrontal_10	rh.rostralmiddlefrontal_24	rh.precuneus_1	rh.parsopercularis_5
86 rh.insula_6	rh.postcentral_24	rh.precuneus_4	lh.precentral_15	lh.supramarginal_15	lh.rostralanteriorcingulate_4	lh.superioparietal_25
87 lh.insula_14	lh.posteriorcingulate_1	rh.inferioparietal_13	lh.lateraloccipital_7	rh.isthmuscingulate_3	rh.superioparietal_18	rh.posteriorcingulate_1
88 rh.parsopercularis_9	rh.precuneus_10	lh.supramarginal_15	rh.inferioparietal_18	lh.isthmuscingulate_6	lh.superiorfrontal_32	rh.inferioparietal_17
89 rh.precentral_19	lh.bankssts_2	rh.insula_11	lh.superiorfrontal_27	lh.insula_14	lh.rostralmiddlefrontal_5	rh.insula_11
90 lh.precuneus_13	rh.superiorfrontal_11	rh.superiorfrontal_18	lh.superiortemporal_24	lh.superiorfrontal_44	rh.superiorfrontal_14	rh.superiorfrontal_19

91 rh.precentral_12	lh.inferioparietal_2	lh.lateraloccipital_3	rh.precuneus_20	lh.posteriorcingulate_4	rh.superioparietal_2	rh.parsopercularis_2
92 rh.supramarginal_10	lh.superiorfrontal_22	lh.lingual_1	rh.caudalmiddlefrontal_6	rh.inferioparietal_20	rh.rostralmiddlefrontal_1	lh.rostralmiddlefrontal_21
93 rh.caudalmiddlefrontal_1	rh.bankssts_2	lh.precuneus_15	lh.precentral_21	lh.caudalmiddlefrontal_4	rh.paracentral_10	lh.insula_4
94 rh.caudalmiddlefrontal_6	lh.precentral_23	lh.bankssts_4	rh.lateraloccipital_17	rh.superioparietal_11	lh.superiorfrontal_14	rh.inferioparietal_2
95 lh.posteriorcingulate_4	lh.posteriorcingulate_8	rh.caudalanteriorcingulate_4	rh.lingual_3	rh.posteriorcingulate_2	rh.lateralorbitofrontal_1	lh.posteriorcingulate_5
96 lh.isthmusingulate_7	rh.inferioparietal_14	lh.inferioparietal_17	rh.lateraloccipital_22	lh.caudalmiddlefrontal_10	lh.precuneus_9	rh.inferioparietal_19
97 lh.isthmusingulate_3	rh.precuneus_1	lh.pericalcarine_4	rh.postcentral_24	rh.bankssts_1	lh.rostralmiddlefrontal_23	lh.precentral_23
98 lh.insula_8	lh.superiorfrontal_27	rh.rostralmiddlefrontal_10	rh.lingual_10	lh.inferioparietal_2	lh.rostralmiddlefrontal_18	lh.caudalmiddlefrontal_7
99 rh.parsopercularis_6	lh.posteriorcingulate_4	rh.inferioparietal_18	rh.inferioparietal_13	rh.supramarginal_10	rh.lateralorbitofrontal_3	rh.superiorfrontal_27
100 rh.posteriorcingulate_3	lh.caudalmiddlefrontal_3	lh.superiotemporal_24	lh.insula_14	rh.caudalmiddlefrontal_5	lh.superioparietal_21	Right-Putamen
101 lh.postcentral_31	lh.supramarginal_2	lh.lingual_14	rh.superioparietal_3	rh.insula_8	rh.precuneus_9	rh.rostralmiddlefrontal_27
102 rh.rostralmiddlefrontal_21	rh.isthmusingulate_6	lh.posteriorcingulate_9	rh.posteriorcingulate_6	lh.insula_16	lh.superioparietal_20	lh.caudalmiddlefrontal_10
103 lh.insula_4	rh.inferiotemporal_13	rh.lateraloccipital_17	lh.superioparietal_13	lh.superioparietal_24	rh.precuneus_3	lh.parsopercularis_8
104 lh.bankssts_4	rh.precuneus_4	rh.fusiform_2	rh.precuneus_6	lh.isthmusingulate_5	rh.superiorfrontal_11	lh.caudalmiddlefrontal_5
105 rh.posteriorcingulate_9	rh.superioparietal_22	lh.insula_4	lh.superiorfrontal_45	rh.precuneus_16	lh.precentral_33	rh.precentral_13
106 rh.supramarginal_6	rh.precentral_22	lh.lateraloccipital_7	rh.paracentral_8	rh.superiorfrontal_11	lh.rostralmiddlefrontal_19	rh.caudalmiddlefrontal_5
107 lh.parsopercularis_6	rh.inferioparietal_12	rh.superiorfrontal_11	lh.lateraloccipital_17	rh.precentral_20	rh.medialorbitofrontal_10	lh.lateralorbitofrontal_13
108 lh.precuneus_11	lh.precentral_21	lh.precuneus_9	lh.inferioparietal_16	rh.insula_6	rh.precuneus_19	rh.parstriangularis_8
109 rh.precentral_20	rh.superioparietal_11	lh.lingual_8	lh.supramarginal_15	lh.precentral_23	lh.superiorfrontal_29	rh.inferioparietal_8
110 rh.paracentral_8	rh.insula_15	rh.insula_1	rh.posteriorcingulate_1	lh.parsopercularis_8	lh.superiorfrontal_35	lh.precuneus_17
111 rh.precuneus_1	rh.superiorfrontal_22	lh.superiorfrontal_28	rh.superiorfrontal_25	rh.inferioparietal_2	lh.postcentral_18	rh.precentral_12
112 rh.precuneus_4	lh.superiorfrontal_2	lh.superiorfrontal_2	rh.superiorfrontal_24	rh.precuneus_6	lh.paracentral_3	rh.inferioparietal_14
113 lh.rostralmiddlefrontal_4	rh.fusiform_17	lh.insula_8	lh.postcentral_31	lh.rostralmiddlefrontal_19	lh.rostralanteriorcingulate_2	rh.paracentral_3
114 lh.supramarginal_3	lh.caudalmiddlefrontal_9	rh.isthmusingulate_4	rh.precentral_12	rh.inferioparietal_19	rh.superioparietal_24	lh.rostralmiddlefrontal_15
115 lh.superioparietal_11	rh.posteriorcingulate_9	lh.inferioparietal_12	lh.superiorfrontal_43	rh.supramarginal_11	rh.rostralmiddlefrontal_4	rh.rostralmiddlefrontal_4
116 lh.precuneus_4	lh.precuneus_9	rh.precentral_19	lh.precentral_23	lh.posteriorcingulate_7	lh.superioparietal_22	lh.superiorfrontal_42
117 lh.caudalmiddlefrontal_3	lh.caudalmiddlefrontal_4	rh.inferioparietal_22	lh.pericalcarine_2	lh.caudalanteriorcingulate_4	rh.lingual_6	rh.superioparietal_10
118 lh.superioparietal_20	lh.precuneus_13	rh.precuneus_3	rh.parsopercularis_2	lh.superioparietal_11	lh.isthmusingulate_3	rh.precentral_33
119 lh.caudalmiddlefrontal_10	rh.lateraloccipital_15	lh.precuneus_12	lh.superioparietal_1	lh.supramarginal_2	lh.superioparietal_13	rh.precentral_14
120 lh.inferioparietal_18	rh.insula_6	lh.lateraloccipital_23	rh.insula_10	lh.insula_2	lh.rostralmiddlefrontal_21	lh.caudalanteriorcingulate_2
121 rh.caudalmiddlefrontal_5	rh.caudalmiddlefrontal_1	lh.postcentral_7	rh.isthmusingulate_3	lh.isthmusingulate_3	lh.rostralanteriorcingulate_1	lh.caudalanteriorcingulate_3
122 lh.caudalmiddlefrontal_9	rh.postcentral_26	lh.insula_14	lh.precuneus_6	rh.superioparietal_10	rh.rostralmiddlefrontal_23	lh.rostralanteriorcingulate_3
123 lh.caudalanteriorcingulate_4	rh.posteriorcingulate_5	lh.caudalmiddlefrontal_3	rh.pericalcarine_5	rh.precuneus_4	lh.parstriangularis_6	lh.lateralorbitofrontal_8
124 rh.precuneus_16	rh.lateraloccipital_7	lh.lingual_7	lh.lateraloccipital_21	rh.posteriorcingulate_3	rh.precuneus_6	rh.precuneus_16
125 rh.precentral_7	rh.superiorfrontal_31	lh.inferiotemporal_7	rh.superiorfrontal_31	lh.isthmusingulate_7	lh.inferioparietal_20	rh.superioparietal_24
126 lh.precentral_4	lh.fusiform_17	rh.superiorfrontal_25	lh.isthmusingulate_4	lh.insula_8	rh.inferioparietal_13	lh.precentral_15
127 rh.isthmusingulate_6	lh.superiorfrontal_20	lh.lingual_2	rh.precentral_15	lh.rostralmiddlefrontal_13	rh.superioparietal_5	lh.posteriorcingulate_8
128 rh.supramarginal_12	lh.insula_8	lh.superiorfrontal_45	lh.posteriorcingulate_5	rh.supramarginal_5	rh.inferioparietal_24	lh.precentral_33
129 rh.precuneus_9	lh.rostralmiddlefrontal_4	rh.pericalcarine_7	rh.superiorfrontal_41	rh.rostralmiddlefrontal_26	lh.paracentral_4	lh.superioparietal_27
130 lh.posteriorcingulate_7	rh.superiorfrontal_24	rh.lateraloccipital_23	rh.caudalanteriorcingulate_3	lh.precuneus_20	lh.insula_4	rh.rostralmiddlefrontal_19
131 rh.rostralmiddlefrontal_18	lh.precentral_16	rh.inferioparietal_8	lh.precentral_16	rh.supramarginal_8	lh.rostralanteriorcingulate_5	rh.posteriorcingulate_7
132 rh.precentral_9	lh.isthmusingulate_5	lh.rostralmiddlefrontal_9	rh.inferioparietal_23	lh.superioparietal_20	lh.inferioparietal_17	lh.precentral_19
133 lh.precuneus_9	lh.supramarginal_12	lh.superiorfrontal_37	rh.postcentral_26	lh.precentral_4	rh.caudalmiddlefrontal_8	lh.precuneus_13
134 rh.posteriorcingulate_8	lh.precentral_4	lh.superiorfrontal_43	rh.isthmusingulate_6	lh.parsopercularis_7	lh.superioparietal_11	lh.superioparietal_15
135 rh.precentral_22	lh.inferioparietal_12	lh.inferioparietal_6	lh.lingual_12	rh.insula_7	lh.lingual_2	rh.inferioparietal_21
136 rh.supramarginal_8	lh.inferioparietal_17	lh.caudalanteriorcingulate_5	rh.precentral_22	rh.precentral_19	Right-Hippocampus	lh.caudalanteriorcingulate_3

137 rh.inferioparietal_9	lh.precuneus_4	rh.caudalanteriorcingulate_1	lh.caudalmiddlefrontal_3	rh.inferioparietal_15	lh.superioparietal_15	lh.superiorfrontal_10
138 lh.parsopercularis_8	Brain-Stem	lh.pericalcarine_5	rh.precuneus_1	rh.precentral_9	lh.inferioparietal_21	rh.rostralmiddlefrontal_13
139 lh.precentral_23	lh.lateraloccipital_5	lh.precuneus_11	lh.fusiform_11	rh.parstriangularis_8	rh.isthmuscingulate_2	rh.parsopercularis_4
140 rh.rostralmiddlefrontal_10	lh.superioparietal_20	rh.superiorfrontal_13	lh.lateraloccipital_11	lh.precuneus_11	lh.inferioparietal_15	rh.superioparietal_18
141 rh.inferioparietal_2	rh.caudalmiddlefrontal_5	rh.precentral_7	rh.middletemporal_12	rh.precentral_7	lh.paracentral_10	rh.superiorfrontal_34
142 lh.caudalmiddlefrontal_4	rh.inferioparietal_21	rh.lateraloccipital_6	rh.lateraloccipital_6	lh.superiortemporal_24	lh.parstriangularis_4	rh.superioparietal_13
143 rh.postcentral_24	rh.middletemporal_12	rh.precuneus_19	lh.inferioparietal_2	rh.posteriorcingulate_8	lh.precuneus_10	rh.superioparietal_9
144 rh.postcentral_30	lh.inferioparietal_16	rh.inferioparietal_23	rh.precuneus_4	lh.rostralmiddlefrontal_9	lh.precuneus_8	Right-Caudate
145 rh.superioparietal_10	rh.isthmuscingulate_1	lh.bankssts_2	rh.superiorfrontal_28	lh.inferioparietal_18	lh.superiorfrontal_42	lh.paracentral_3
146 rh.inferioparietal_19	lh.supramarginal_1	lh.rostralmiddlefrontal_19	rh.insula_16	rh.precuneus_9	lh.superioparietal_2	lh.superiorfrontal_35
147 rh.inferioparietal_15	lh.precuneus_11	rh.insula_5	lh.posteriorcingulate_4	lh.parstriangularis_2	rh.superiorfrontal_8	Right-Amygdala
148 lh.superioparietal_24	rh.superioparietal_14	rh.pericalcarine_2	rh.precuneus_10	rh.inferioparietal_16	rh.inferioparietal_12	lh.posteriorcingulate_4
149 lh.precuneus_8	lh.inferioparietal_15	rh.lateraloccipital_7	lh.inferioparietal_17	rh.rostralmiddlefrontal_22	rh.lingual_15	rh.parsopercularis_7
150 lh.superiorfrontal_44	rh.parsopercularis_9	rh.inferioparietal_21	lh.caudalmiddlefrontal_4	rh.superioparietal_18	rh.rostralmiddlefrontal_7	rh.inferioparietal_26
151 rh.rostralmiddlefrontal_24	rh.inferioparietal_23	rh.precentral_22	rh.inferioparietal_14	lh.supramarginal_3	lh.superioparietal_6	lh.caudalmiddlefrontal_2
152 rh.insula_5	lh.isthmuscingulate_6	rh.superiorfrontal_24	Brain-Stem	lh.caudalmiddlefrontal_1	rh.bankssts_1	rh.posteriorcingulate_5
153 rh.insula_4	lh.pericalcarine_4	lh.inferioparietal_20	lh.inferiorfrontal_38	rh.paracentral_8	lh.inferioparietal_12	lh.insula_10
154 lh.superioparietal_6	lh.superioparietal_24	lh.inferioparietal_16	rh.superiorfrontal_42	rh.supramarginal_6	rh.caudalmiddlefrontal_11	lh.superiorfrontal_31
155 lh.precuneus_15	rh.precuneus_16	lh.supramarginal_17	lh.precuneus_9	lh.precuneus_9	rh.lateraloccipital_19	rh.parstriangularis_3
156 rh.inferiorfrontal_22	rh.caudalanteriorcingulate_1	rh.superioparietal_14	lh.caudalmiddlefrontal_9	lh.inferioparietal_3	rh.rostralanteriorcingulate_1	rh.inferiorfrontal_26
157 lh.precentral_25	lh.inferioparietal_10	rh.precuneus_20	lh.superiorfrontal_1	rh.insula_4	lh.precuneus_12	rh.caudalanteriorcingulate_5
158 lh.paracentral_6	rh.insula_15	lh.superioparietal_13	lh.superiorfrontal_31	rh.precuneus_1	rh.parsopercularis_6	rh.caudalmiddlefrontal_4
159 lh.supramarginal_1	rh.superiorfrontal_42	lh.insula_15	rh.posteriorcingulate_9	lh.postcentral_31	lh.posteriorcingulate_7	lh.superioparietal_13
160 rh.insula_8	lh.precentral_25	lh.caudalmiddlefrontal_1	lh.inferioparietal_6	lh.superiorfrontal_29	rh.lateraloccipital_5	lh.inferioparietal_12
161 lh.paracentral_5	rh.precentral_23	lh.superiorfrontal_31	rh.superiorfrontal_27	rh.superioparietal_25	rh.caudalmiddlefrontal_10	lh.superiorfrontal_25
162 lh.precentral_8	rh.paracentral_7	lh.fusiform_17	lh.supramarginal_2	rh.posteriorcingulate_9	rh.lateraloccipital_4	lh.paracentral_1
163 rh.precentral_15	lh.posteriorcingulate_2	rh.superiorfrontal_31	lh.precuneus_18	lh.precuneus_8	lh.superiorfrontal_44	lh.posteriorcingulate_7
164 lh.postcentral_7	lh.superiorfrontal_43	rh.bankssts_2	lh.posteriorcingulate_1	lh.caudalanteriorcingulate_1	lh.superioparietal_14	lh.posteriorcingulate_6
165 lh.inferioparietal_15	rh.rostralmiddlefrontal_10	lh.rostralmiddlefrontal_13	rh.lateraloccipital_8	lh.bankssts_4	lh.parsopercularis_1	rh.posteriorcingulate_6
166 rh.parstriangularis_8	rh.supramarginal_6	lh.lateraloccipital_21	rh.superiorfrontal_2	rh.supramarginal_12	lh.parahippocampal_1	rh.parsopercularis_1
167 rh.paracentral_7	rh.isthmuscingulate_4	lh.lingual_15	lh.supramarginal_1	rh.rostralmiddlefrontal_20	lh.precentral_17	rh.paracentral_5
168 rh.postcentral_29	rh.inferioparietal_8	rh.supramarginal_5	lh.superiorfrontal_37	rh.isthmuscingulate_6	lh.superioparietal_27	Left-Putamen
169 rh.superioparietal_18	lh.posteriorcingulate_9	rh.lateraloccipital_15	rh.superioparietal_11	rh.superioparietal_11	rh.precuneus_5	rh.precuneus_10
170 lh.supramarginal_21	rh.lateraloccipital_23	rh.lingual_10	rh.fusiform_14	lh.paracentral_6	Right-Accumbens-area	rh.precuneus_20
171 rh.caudalanteriorcingulate_1	lh.fusiform_11	rh.superiorfrontal_41	lh.inferioparietal_15	lh.rostralmiddlefrontal_22	rh.superiorfrontal_19	lh.rostralanteriorcingulate_2
172 rh.precuneus_3	rh.caudalanteriorcingulate_5	rh.superiorfrontal_17	lh.caudalanteriorcingulate_1	lh.supramarginal_21	rh.caudalmiddlefrontal_9	rh.superiorfrontal_22
173 rh.precuneus_19	lh.caudalanteriorcingulate_2	rh.parsopercularis_6	rh.supramarginal_12	rh.postcentral_24	rh.inferioparietal_1	lh.caudalanteriorcingulate_1
174 rh.insula_7	lh.insula_16	rh.superioparietal_3	rh.superioparietal_22	lh.paracentral_5	lh.postcentral_14	rh.precentral_20
175 lh.paracentral_11	rh.superiorfrontal_25	rh.inferioparietal_24	rh.precentral_23	lh.inferioparietal_22	lh.superiorfrontal_9	lh.superioparietal_21
176 lh.superioparietal_2	rh.postcentral_29	rh.insula_6	lh.superiorfrontal_42	lh.precentral_8	rh.lateralorbitofrontal_12	lh.inferioparietal_7
177 lh.inferioparietal_17	lh.superioparietal_1	rh.precuneus_1	rh.superiorfrontal_38	lh.superioparietal_6	rh.isthmuscingulate_5	lh.precuneus_12
178 lh.precuneus_22	rh.superiorfrontal_41	rh.lingual_5	lh.precentral_4	lh.caudalmiddlefrontal_8	rh.paracentral_8	lh.parsopercularis_4
179 rh.superiorfrontal_11	lh.precuneus_18	lh.superioparietal_1	rh.caudalmiddlefrontal_1	rh.caudalanteriorcingulate_4	rh.rostralmiddlefrontal_17	lh.superioparietal_12
180 rh.supramarginal_13	rh.posteriorcingulate_2	lh.pericalcarine_3	lh.precuneus_13	rh.rostralmiddlefrontal_19	rh.superioparietal_29	rh.superiorfrontal_31
181 lh.rostralmiddlefrontal_13	rh.lateraloccipital_22	rh.inferiortemporal_13	rh.inferioparietal_12	rh.precentral_33	rh.superiorfrontal_4	rh.inferioparietal_11
182 lh.caudalanteriorcingulate_1	lh.parsopercularis_6	rh.lingual_4	lh.rostralmiddlefrontal_4	rh.caudalanteriorcingulate_1	rh.supramarginal_11	rh.caudalanteriorcingulate_4

183 rh.inferioparietal_25	lh.superioparietal_2	rh.middletemporal_12	rh.superioparietal_8	lh.inferioparietal_5	rh.lateraloccipital_10	rh.inferioparietal_20
184 rh.precuneus_5	lh.lingual_6	rh.precuneus_10	rh.superiorfrontal_18	rh.caudalmiddlefrontal_9	rh.superiorfrontal_37	rh.inferioparietal_13
185 lh.inferioparietal_22	rh.pericalcarine_2	rh.supramarginal_10	rh.lateraloccipital_9	rh.inferioparietal_1	rh.rostralmiddlefrontal_13	lh.superiorfrontal_16
186 rh.precentral_3	lh.pericalcarine_5	rh.postcentral_24	lh.superiorfrontal_29	lh.precuneus_22	lh.isthmuscingulate_5	lh.caudalanteriorcingulate_4
187 rh.superiortemporal_14	lh.lateraloccipital_21	lh.supramarginal_1	rh.fusiform_9	rh.precentral_22	lh.superiorfrontal_24	rh.insula_2
188 lh.rostralmiddlefrontal_26	rh.caudalanteriorcingulate_3	lh.superiorfrontal_22	rh.insula_6	rh.parsopercularis_4	rh.parsopercularis_10	rh.insula_14
189 lh.inferioparietal_5	lh.superiorfrontal_31	lh.paracentral_5	lh.precuneus_4	rh.precuneus_19	rh.insula_2	lh.precentral_12
190 rh.precentral_23	rh.superioparietal_9	rh.lingual_12	lh.insula_8	rh.inferioparietal_22	rh.insula_10	lh.superiorfrontal_3
191 rh.postcentral_26	rh.superiorfrontal_27	lh.inferioparietal_2	rh.paracentral_7	rh.superiorfrontal_31	rh.superiorfrontal_3	rh.isthmuscingulate_5
192 lh.rostralmiddlefrontal_19	lh.superiorfrontal_38	rh.rostralmiddlefrontal_21	lh.fusiform_7	lh.superioparietal_10	rh.inferioparietal_8	lh.precuneus_6
193 rh.caudalanteriorcingulate_4	rh.inferioparietal_15	rh.precentral_12	rh.caudalmiddlefrontal_5	rh.postcentral_29	lh.insula_5	rh.paracentral_4
194 lh.parstriangularis_2	lh.supramarginal_3	rh.precentral_23	lh.superioparietal_20	rh.inferioparietal_25	lh.postcentral_23	lh.supramarginal_18
195 lh.caudalmiddlefrontal_1	lh.lingual_14	lh.posteriorcingulate_3	lh.posteriorcingulate_8	rh.precentral_3	rh.rostralmiddlefrontal_19	rh.inferioparietal_15
196 rh.transversetemporal_3	lh.superiorfrontal_29	rh.rostralmiddlefrontal_24	lh.precentral_25	rh.insula_15	rh.inferioparietal_7	rh.inferioparietal_12
197 lh.superiorfrontal_27	rh.postcentral_30	rh.supramarginal_6	lh.paracentral_3	rh.precentral_15	rh.precuneus_4	lh.inferioparietal_22
198 rh.insula_15	lh.paracentral_5	lh.superiorfrontal_29	lh.superioparietal_24	lh.caudalmiddlefrontal_6	rh.lateraloccipital_15	lh.rostralmiddlefrontal_14
199 rh.isthmuscingulate_2	rh.precuneus_19	lh.lateraloccipital_5	lh.lateraloccipital_4	rh.precentral_29	lh.parsopercularis_7	lh.superioparietal_4
200 lh.rostralmiddlefrontal_9	rh.precentral_9	rh.precentral_15	lh.paracentral_4	lh.posteriorcingulate_3	lh.parahippocampal_5	lh.posteriorcingulate_2
201 lh.posteriorcingulate_3	lh.lateraloccipital_7	lh.isthmuscingulate_5	rh.inferioparietal_24	rh.superioparietal_15	rh.rostralanteriorcingulate_3	rh.supramarginal_8
202 lh.isthmuscingulate_1	rh.superioparietal_3	lh.caudalmiddlefrontal_10	rh.superioparietal_10	lh.inferioparietal_15	rh.inferioparietal_12	rh.precentral_17
203 rh.postcentral_21	rh.lingual_3	lh.fusiform_11	lh.lingual_10	lh.postcentral_7	lh.lateralorbitofrontal_10	rh.superiorfrontal_35
204 lh.supramarginal_4	rh.superioparietal_11	rh.superiorfrontal_22	rh.postcentral_29	rh.insula_5	lh.lateraloccipital_18	lh.inferiorfrontal_38
205 lh.inferioparietal_1	lh.inferioparietal_6	lh.caudalmiddlefrontal_4	lh.precuneus_11	rh.caudalmiddlefrontal_7	rh.precentral_23	lh.rostralmiddlefrontal_1
206 lh.bankssts_2	rh.rostralmiddlefrontal_21	lh.precuneus_4	lh.superiorfrontal_3	lh.precentral_25	rh.parstriangularis_2	rh.supramarginal_10
207 rh.rostralmiddlefrontal_19	lh.superioparietal_6	lh.superiorfrontal_3	lh.isthmuscingulate_5	lh.superioparietal_19	rh.rostralanteriorcingulate_2	rh.superiorfrontal_13
208 rh.inferioparietal_3	rh.parsopercularis_6	lh.precentral_21	rh.precuneus_16	rh.rostralmiddlefrontal_23	rh.lateralorbitofrontal_8	Left-Caudate
209 rh.inferioparietal_16	lh.paracentral_4	rh.supramarginal_12	lh.superioparietal_2	rh.postcentral_21	rh.inferioparietal_21	rh.rostralanteriorcingulate_3
210 lh.parsopercularis_7	rh.precentral_33	rh.fusiform_17	lh.lingual_15	rh.insula_14	rh.rostralanteriorcingulate_4	lh.parsopercularis_3
211 lh.parsopercularis_4	rh.superioparietal_8	rh.lingual_3	rh.pericalcarine_4	lh.paracentral_7	rh.inferioparietal_22	lh.paracentral_9
212 rh.superiorfrontal_31	lh.lingual_15	lh.lateraloccipital_17	rh.superiorfrontal_41	lh.rostralmiddlefrontal_5	rh.insula_1	rh.superioparietal_16
213 rh.rostralmiddlefrontal_22	rh.supramarginal_10	lh.supramarginal_2	rh.rostralmiddlefrontal_10	rh.rostralmiddlefrontal_14	rh.precuneus_8	lh.inferioparietal_5
214 rh.lingual_6	rh.pericalcarine_7	rh.superiorfrontal_42	lh.inferiortemporal_16	lh.precentral_33	rh.parstriangularis_7	rh.superioparietal_5
215 lh.precentral_16	lh.supramarginal_17	lh.precuneus_6	lh.superiorfrontal_21	lh.paracentral_4	rh.isthmuscingulate_1	lh.rostralmiddlefrontal_7
216 lh.supramarginal_17	rh.lingual_4	lh.superiorfrontal_20	lh.inferioparietal_12	lh.precuneus_17	lh.supramarginal_3	rh.parstriangularis_6
217 rh.precentral_33	lh.paracentral_3	lh.paracentral_4	rh.lingual_9	rh.isthmuscingulate_2	lh.rostralmiddlefrontal_13	Right-Hippocampus
218 rh.precuneus_23	rh.inferioparietal_24	lh.paracentral_6	rh.superiorfrontal_30	lh.paracentral_11	rh.parsopercularis_8	lh.rostralanteriorcingulate_5
219 rh.middletemporal_12	lh.paracentral_11	lh.parsopercularis_8	rh.lingual_5	lh.parsopercularis_1	rh.precuneus_14	lh.superiorfrontal_22
220 rh.postcentral_27	rh.superioparietal_18	rh.postcentral_21	rh.precentral_33	lh.caudalmiddlefrontal_11	lh.inferioparietal_16	rh.superioparietal_11
221 rh.paracentral_10	lh.lateraloccipital_17	rh.superioparietal_8	rh.parsopercularis_9	lh.superiorfrontal_41	lh.inferioparietal_22	rh.supramarginal_16
222 lh.superiortemporal_18	lh.superiorfrontal_42	rh.lateraloccipital_22	rh.precuneus_19	lh.superiorfrontal_27	rh.lateralorbitofrontal_9	lh.superioparietal_11
223 rh.caudalanteriorcingulate_2	rh.superiortemporal_14	rh.inferioparietal_14	lh.lateraloccipital_19	lh.rostralmiddlefrontal_23	lh.superiorfrontal_38	lh.superioparietal_12
224 rh.supramarginal_7	rh.lateraloccipital_17	rh.postcentral_26	lh.cuneus_1	rh.parsopercularis_5	rh.precentral_13	rh.insula_4
225 rh.rostralmiddlefrontal_20	rh.postcentral_21	lh.lateraloccipital_16	lh.lingual_11	lh.inferioparietal_7	lh.paracentral_9	lh.medialorbitofrontal_4
226 lh.precentral_13	lh.superiorfrontal_41	rh.pericalcarine_4	rh.inferioparietal_21	rh.precentral_23	rh.rostralmiddlefrontal_20	rh.superiorfrontal_24
227 lh.precuneus_20	lh.insula_4	rh.lateraloccipital_19	lh.pericalcarine_3	rh.caudalanteriorcingulate_2	rh.inferioparietal_6	rh.paracentral_11
228 lh.rostralmiddlefrontal_22	lh.precentral_33	rh.insula_9	rh.supramarginal_6	rh.parsopercularis_7	rh.superiorfrontal_25	lh.posteriorcingulate_1

229 rh.caudalmiddlefrontal_8	lh.superiorparietal_16	lh.precuneus_13	lh.paracentral_5	rh.inferiorparietal_11	rh.inferiorparietal_3	lh.posteriorcingulate_3
230 lh.precentral_21	rh.insula_1	rh.pericalcarine_5	lh.precentral_33	lh.parsopercularis_9	lh.precentral_6	rh.rostralmiddlefrontal_16
231 rh.superiorfrontal_42	rh.supramarginal_13	lh.lateraloccipital_11	lh.lateraloccipital_16	lh.inferiorparietal_1	rh.lateralorbitofrontal_17	lh.caudalmiddlefrontal_12
232 rh.precuneus_8	rh.superiorfrontal_2	rh.superiorparietal_10	rh.precentral_29	lh.caudalmiddlefrontal_7	rh.rostralmiddlefrontal_10	rh.insula_15
233 rh.bankssts_2	rh.posteriorcingulate_8	rh.rostralmiddlefrontal_23	rh.inferiorparietal_15	lh.rostralmiddlefrontal_15	rh.rostralmiddlefrontal_18	lh.superiorfrontal_24
234 lh.caudalmiddlefrontal_8	lh.paracentral_6	lh.pericalcarine_2	lh.supramarginal_17	rh.insula_9	rh.precuneus_22	rh.parsopercularis_8
235 rh.superiorfrontal_24	rh.precentral_29	rh.lingual_15	rh.inferiortemporal_15	rh.superiorfrontal_27	lh.supramarginal_16	rh.posteriorcingulate_2
236 rh.posteriorcingulate_4	rh.caudalmiddlefrontal_8	lh.lingual_6	rh.superiorfrontal_13	rh.parstriangularis_3	rh.precentral_12	lh.postcentral_18
237 rh.superiorparietal_25	lh.isthmuscingulate_7	lh.superiorfrontal_38	rh.superiorparietal_14	rh.superiorfrontal_24	lh.precentral_12	Left-Hippocampus
238 lh.precentral_33	lh.lateraloccipital_6	rh.superiorfrontal_27	rh.postcentral_30	rh.caudalmiddlefrontal_4	rh.rostralmiddlefrontal_25	lh.supramarginal_21
239 lh.postcentral_21	lh.superiorfrontal_45	rh.postcentral_30	lh.insula_15	rh.postcentral_30	lh.caudalanteriorcingulate_5	lh.superiorfrontal_2
240 rh.inferiorparietal_10	rh.fusiform_14	lh.precentral_16	rh.paracentral_3	rh.supramarginal_13	lh.inferiorparietal_2	lh.inferiorparietal_2
241 lh.inferiorparietal_7	rh.lingual_5	rh.superiorfrontal_2	rh.isthmuscingulate_1	rh.superiorfrontal_14	lh.precentral_15	rh.caudalanteriorcingulate_2
242 rh.inferiorparietal_11	lh.precuneus_8	rh.precuneus_16	lh.parsopercularis_6	rh.precuneus_5	lh.superiorparietal_3	rh.precuneus_11
243 rh.inferiorparietal_1	lh.caudalmiddlefrontal_1	lh.inferiorparietal_15	lh.superiorparietal_6	rh.caudalmiddlefrontal_8	rh.postcentral_27	lh.precentral_4
244 rh.lateraloccipital_5	lh.precuneus_22	rh.rostralmiddlefrontal_19	rh.posteriorcingulate_5	lh.supramarginal_18	Right-Pallidum	rh.postcentral_21
245 rh.precentral_26	rh.paracentral_3	lh.precentral_33	rh.bankssts_3	rh.paracentral_3	lh.insula_15	rh.precentral_9
246 rh.precentral_16	lh.lingual_8	lh.paracentral_1	rh.caudalmiddlefrontal_8	lh.superiorparietal_2	rh.parsopercularis_2	rh.paracentral_12
247 rh.postcentral_9	rh.bankssts_3	lh.paracentral_11	rh.postcentral_21	rh.superiorfrontal_17	lh.precentral_23	lh.precentral_26
248 lh.precuneus_17	rh.paracentral_10	rh.superiortemporal_14	lh.isthmuscingulate_6	rh.superiorfrontal_42	rh.caudalanteriorcingulate_4	rh.precuneus_4
249 lh.precuneus_18	rh.inferiorparietal_17	rh.postcentral_29	lh.superiorfrontal_7	lh.inferiorparietal_17	rh.parahippocampal_1	rh.superiorfrontal_37
250 lh.lingual_15	rh.posteriorcingulate_3	rh.superiorfrontal_37	rh.precentral_9	lh.supramarginal_1	lh.caudalmiddlefrontal_3	lh.posteriorcingulate_9
251 rh.parsopercularis_7	lh.rostralmiddlefrontal_19	lh.isthmuscingulate_7	rh.lateraloccipital_18	Brain-Stem	rh.isthmuscingulate_3	rh.fusiform_16
252 lh.superiorfrontal_29	rh.pericalcarine_5	rh.superiorfrontal_30	rh.lateraloccipital_16	rh.superiorfrontal_2	rh.medialorbitofrontal_11	lh.rostralmiddlefrontal_6
253 rh.precentral_29	lh.inferiortemporal_16	lh.lateraloccipital_8	lh.lateraloccipital_8	rh.precuneus_23	rh.medialorbitofrontal_4	lh.caudalmiddlefrontal_3
254 rh.caudalmiddlefrontal_3	lh.lingual_1	lh.precentral_4	lh.middletemporal_6	lh.precentral_13	rh.inferiorparietal_16	lh.caudalanteriorcingulate_5
255 lh.caudalmiddlefrontal_6	lh.superiorfrontal_3	lh.superiorfrontal_41	lh.supramarginal_3	rh.precuneus_3	rh.superiorfrontal_10	rh.superiorfrontal_25
256 rh.parstriangularis_3	rh.rostralmiddlefrontal_24	rh.inferiorparietal_17	rh.superiortemporal_14	lh.supramarginal_4	rh.postcentral_29	rh.posteriorcingulate_8
257 rh.caudalmiddlefrontal_4	rh.inferiortemporal_15	lh.lingual_10	rh.inferiorparietal_8	lh.superiorfrontal_31	rh.parstriangularis_3	rh.inferiorparietal_20
258 rh.precentral_34	lh.superiorfrontal_28	lh.superiorparietal_6	lh.precentral_26	lh.precuneus_15	rh.inferiorparietal_26	lh.superiorparietal_18
259 lh.paracentral_4	lh.precentral_26	lh.superiortemporal_18	lh.paracentral_11	rh.postcentral_26	lh.caudalmiddlefrontal_4	rh.caudalanteriorcingulate_1
260 lh.supramarginal_18	rh.superiorfrontal_13	lh.precuneus_20	lh.paracentral_11	lh.superiorparietal_15	lh.paracentral_11	rh.rostralanteriorcingulate_2
261 lh.lateraloccipital_23	lh.parsopercularis_8	rh.lingual_9	lh.fusiform_12	rh.caudalmiddlefrontal_3	lh.superiorfrontal_22	lh.precuneus_5
262 lh.inferiortemporal_7	lh.fusiform_7	lh.lingual_11	rh.caudalanteriorcingulate_5	lh.precentral_16	lh.inferiorparietal_5	rh.superiorparietal_26
263 rh.inferiorparietal_23	rh.supramarginal_8	lh.rostralanteriorcingulate_5	rh.superiorparietal_18	rh.paracentral_10	rh.superiorfrontal_27	lh.superiorfrontal_17
264 lh.superiorparietal_10	lh.middletemporal_6	rh.caudalmiddlefrontal_5	rh.posteriorcingulate_2	rh.supramarginal_7	rh.postcentral_21	lh.superiorparietal_17
265 lh.lingual_2	rh.paracentral_11	rh.superiorparietal_22	rh.supramarginal_13	rh.middletemporal_12	rh.insula_11	lh.rostralanteriorcingulate_4
266 lh.bankssts_3	rh.rostralmiddlefrontal_18	rh.parsopercularis_9	rh.isthmuscingulate_4	lh.isthmuscingulate_1	rh.inferiorparietal_11	rh.precentral_3
267 rh.superiorparietal_15	rh.supramarginal_7	lh.supramarginal_4	rh.superiorparietal_11	lh.supramarginal_17	rh.superiorfrontal_15	rh.isthmuscingulate_2
268 rh.bankssts_5	rh.postcentral_27	rh.supramarginal_13	lh.posteriorcingulate_9	lh.superiorfrontal_22	lh.caudalanteriorcingulate_4	lh.precuneus_22
269 lh.caudalmiddlefrontal_11	lh.pericalcarine_2	rh.superiorfrontal_19	rh.rostralmiddlefrontal_21	rh.superiorfrontal_22	lh.precuneus_1	rh.inferiorparietal_25
270 rh.caudalmiddlefrontal_9	lh.cuneus_1	rh.insula_4	lh.cuneus_2	lh.caudalmiddlefrontal_2	lh.isthmuscingulate_7	lh.paracentral_6
271 rh.postcentral_13	lh.supramarginal_21	rh.insula_8	lh.caudalanteriorcingulate_2	lh.paracentral_3	rh.parsopercularis_9	lh.isthmuscingulate_4
272 rh.lingual_15	lh.superiorfrontal_37	rh.insula_14	lh.insula_16	rh.precuneus_8	rh.precentral_20	rh.isthmuscingulate_4
273 lh.lingual_7	lh.supramarginal_4	lh.superiorparietal_11	rh.paracentral_10	lh.bankssts_2	rh.inferiorparietal_23	lh.precentral_8
274 lh.bankssts_5	lh.rostralmiddlefrontal_9	lh.parsopercularis_6	rh.superiorparietal_9	rh.postcentral_27	lh.superiorparietal_18	rh.precuneus_7

275 lh.rostralmiddlefrontal_15	rh.lingual_10	lh.precentral_23	rh.parsopercularis_6	rh.precentral_34	Left-Accumbens-area	rh.parsopercularis_3
276 lh.postcentral_8	lh.superiorfrontal_21	lh.rostralmiddlefrontal_22	lh.paracentral_6	rh.rostralmiddlefrontal_2	lh.inferioparietal_3	lh.paracentral_5
277 lh.transversetemporal_2	rh.lingual_12	rh.superioparietal_9	lh.caudalmiddlefrontal_1	rh.precuneus_7	rh.precentral_14	lh.rostralmiddlefrontal_17
278 lh.insula_12	rh.superiorfrontal_18	lh.isthmuscingulate_1	lh.posteriorcingulate_2	lh.caudalanteriorcingulate_5	rh.inferioparietal_20	rh.isthmuscingulate_2
279 rh.parsopercularis_5	lh.lateraloccipital_11	lh.inferioparietal_3	lh.superiorfrontal_23	lh.precentral_21	rh.supramarginal_6	lh.precentral_7
280 rh.postcentral_14	rh.rostralmiddlefrontal_23	lh.precentral_26	lh.precuneus_22	rh.paracentral_2	rh.precentral_33	rh.superioparietal_20
281 lh.parsopercularis_1	rh.precentral_26	lh.precuneus_22	lh.postcentral_19	lh.superiorfrontal_38	lh.rostralmiddlefrontal_9	rh.insula_16
282 lh.superiorfrontal_22	lh.superiortemporal_18	rh.insula_7	lh.paracentral_7	lh.superiorfrontal_2	lh.supramarginal_18	rh.insula_6
283 lh.supramarginal_7	lh.supramarginal_7	lh.superioparietal_24	lh.superioparietal_23	lh.inferioparietal_23	rh.caudalanteriorcingulate_6	lh.superiorfrontal_13
284 lh.inferioparietal_16	rh.fusiform_9	lh.inferiortemporal_16	rh.posteriorcingulate_8	rh.superiortemporal_14	lh.superiorfrontal_19	rh.insula_12
285 rh.precuneus_7	lh.superiorfrontal_1	lh.superioparietal_2	lh.fusiform_6	lh.parsopercularis_3	rh.inferioparietal_2	rh.posteriorcingulate_3
286 lh.superiorfrontal_41	rh.lingual_15	lh.postcentral_19	lh.superiorfrontal_24	rh.precentral_26	rh.superiortemporal_8	rh.caudalmiddlefrontal_8
287 lh.caudalmiddlefrontal_7	lh.precuneus_20	lh.precuneus_18	rh.supramarginal_10	rh.posteriorcingulate_4	rh.lateraloccipital_6	rh.inferioparietal_6
288 lh.postcentral_30	rh.superiorfrontal_17	lh.cuneus_1	lh.rostralmiddlefrontal_23	rh.rostralmiddlefrontal_42	rh.insula_16	lh.parsopercularis_5
289 rh.superiorfrontal_27	lh.inferioparietal_5	lh.lateraloccipital_4	lh.paracentral_9	rh.lateraloccipital_5	rh.lateralorbitofrontal_4	rh.inferioparietal_18
290 rh.caudalmiddlefrontal_7	rh.precuneus_8	lh.caudalmiddlefrontal_8	rh.superiorfrontal_17	lh.rostralanteriorcingulate_2	rh.caudalanteriorcingulate_1	lh.isthmuscingulate_3
291 rh.bankssts_3	rh.precentral_16	Right-Amygdala	lh.rostralmiddlefrontal_19	lh.paracentral_7	rh.parahippocampal_3	rh.precuneus_9
292 lh.postcentral_13	rh.precuneus_9	rh.paracentral_3	lh.insula_4	lh.precentral_26	rh.supramarginal_2	lh.parstriangularis_6
293 lh.postcentral_10	rh.caudalanteriorcingulate_2	rh.paracentral_11	rh.superiorfrontal_37	lh.inferioparietal_10	rh.rostralmiddlefrontal_11	rh.precuneus_19
294 lh.parsopercularis_9	rh.lateraloccipital_8	lh.superiorfrontal_20	rh.lateraloccipital_6	lh.postcentral_21	lh.fusiform_7	lh.supramarginal_15
295 lh.caudalanteriorcingulate_5	lh.postcentral_21	rh.supramarginal_8	rh.superiorfrontal_19	rh.inferioparietal_24	rh.caudalmiddlefrontal_1	rh.superiorfrontal_42
296 lh.superioparietal_19	lh.precentral_8	lh.middletemporal_6	lh.precuneus_8	rh.precentral_36	lh.precuneus_2	rh.superiorfrontal_28
297 rh.rostralmiddlefrontal_23	lh.rostralmiddlefrontal_13	lh.superiorfrontal_21	lh.precentral_28	rh.paracentral_11	rh.middletemporal_2	rh.inferioparietal_4
298 rh.paracentral_3	rh.caudalmiddlefrontal_3	rh.rostralmiddlefrontal_20	rh.superiorfrontal_1	lh.precuneus_10	lh.caudalmiddlefrontal_8	lh.superioparietal_22
299 lh.superiorfrontal_31	lh.paracentral_7	rh.lateraloccipital_2	lh.supramarginal_7	lh.inferioparietal_6	rh.parstriangularis_8	lh.superioparietal_6
300 lh.precentral_11	rh.insula_5	lh.superiorfrontal_42	rh.supramarginal_7	rh.superiorfrontal_28	rh.inferioparietal_19	rh.caudalmiddlefrontal_2
301 rh.precentral_36	rh.superiorfrontal_38	lh.superiorfrontal_23	lh.superiorfrontal_34	rh.postcentral_8	rh.precentral_27	rh.rostralmiddlefrontal_7
302 rh.superiorfrontal_22	lh.inferioparietal_1	lh.superiorfrontal_26	rh.lingual_15	lh.precuneus_3	lh.parsopercularis_6	rh.postcentral_8
303 rh.supramarginal_9	lh.precentral_28	rh.superiorfrontal_6	rh.postcentral_27	Right-Amygdala	lh.lateraloccipital_21	lh.precuneus_8
304 rh.inferiortemporal_13	rh.rostralmiddlefrontal_19	lh.superiorfrontal_7	rh.precentral_26	rh.transversetemporal_3	lh.precentral_24	lh.inferioparietal_10
305 lh.precentral_20	lh.lingual_10	rh.superioparietal_11	lh.isthmuscingulate_7	lh.precuneus_21	lh.lateraloccipital_5	rh.isthmuscingulate_1
306 lh.precuneus_3	lh.lateraloccipital_4	lh.precuneus_3	rh.caudalanteriorcingulate_3	lh.inferioparietal_4	rh.supramarginal_19	rh.precentral_34
307 rh.inferioparietal_24	rh.superiorfrontal_30	rh.paracentral_10	rh.lateraloccipital_19	rh.postcentral_30	lh.superiorfrontal_1	rh.insula_13
308 lh.superiorfrontal_2	lh.fusiform_12	rh.lateraloccipital_11	rh.insula_1	lh.superiorfrontal_20	rh.inferioparietal_25	rh.precentral_25
309 lh.supramarginal_12	rh.precuneus_23	rh.bankssts_3	lh.superiorfrontal_26	rh.postcentral_9	lh.postcentral_30	rh.supramarginal_17
310 lh.superioparietal_15	rh.fusiform_15	rh.caudalanteriorcingulate_6	rh.fusiform_12	rh.lingual_6	rh.superiorfrontal_38	rh.isthmuscingulate_3
311 lh.precuneus_10	lh.precuneus_3	rh.precentral_26	rh.fusiform_15	lh.postcentral_10	lh.precentral_35	lh.inferioparietal_13
312 rh.superioparietal_8	lh.superiorfrontal_7	lh.paracentral_3	lh.fusiform_15	lh.precentral_20	lh.isthmuscingulate_2	lh.precuneus_9
313 lh.caudalmiddlefrontal_2	lh.pericalcarine_3	rh.superiorfrontal_34	lh.supramarginal_4	lh.inferioparietal_16	lh.caudalmiddlefrontal_1	lh.superioparietal_28
314 lh.fusiform_11	rh.inferioparietal_9	rh.paracentral_7	lh.rostralmiddlefrontal_9	lh.superiortemporal_18	rh.postcentral_2	rh.precentral_3
315 lh.paracentral_3	rh.inferioparietal_25	rh.fusiform_14	rh.rostralmiddlefrontal_24	lh.bankssts_5	lh.superiorfrontal_41	rh.precuneus_6
316 lh.precuneus_21	lh.caudalanteriorcingulate_4	rh.superiorfrontal_36	lh.superiortemporal_18	rh.bankssts_2	rh.precentral_8	rh.supramarginal_3
317 lh.superiorfrontal_38	rh.precuneus_7	lh.paracentral_7	lh.superioparietal_16	rh.superiorfrontal_13	lh.superioparietal_7	lh.inferioparietal_18
318 rh.inferioparietal_6	rh.postcentral_6	rh.supramarginal_7	lh.precuneus_20	rh.rostralmiddlefrontal_16	lh.caudalmiddlefrontal_9	lh.superiorfrontal_27
319 lh.parsopercularis_3	lh.lateraloccipital_16	rh.superioparietal_18	rh.precentral_16	lh.precentral_12	Right-Thalamus-Proper	rh.postcentral_29
320 lh.precentral_26	rh.superioparietal_25	lh.precuneus_11	rh.lateraloccipital_11	lh.superiorfrontal_32	rh.superiorfrontal_1	lh.insula_8

321 lh.lateraloccipital_18	lh.superiorfrontal_26	lh.superiorparietal_16	lh.supramarginal_21	lh.precentral_11	lh.fusiform_17	lh.isthmuscingulate_7
322 rh.superiorfrontal_28	rh.lateraloccipital_9	lh.lateraloccipital_19	rh.precuneus_8	rh.bankssts_5	rh.precentral_29	rh.inferiorparietal_24
323 rh.superiorfrontal_17	rh.inferiorparietal_19	lh.postcentral_10	rh.posteriorcingulate_3	lh.supramarginal_7	lh.rostralmiddlefrontal_4	rh.superiorfrontal_3
324 rh.postcentral_8	lh.paracentral_9	rh.lateraloccipital_9	rh.caudalmiddlefrontal_3	rh.rostralanteriorcingulate_3	rh.postcentral_14	lh.inferiorparietal_11
325 rh.lingual_5	rh.rostralmiddlefrontal_20	rh.precuneus_23	lh.superiorfrontal_18	rh.superiorfrontal_26	lh.precentral_26	lh.precentral_6
326 rh.insula_14	lh.superiorfrontal_23	lh.supramarginal_3	rh.paracentral_5	lh.postcentral_18	rh.superiorparietal_26	lh.inferiorparietal_21
327 rh.insula_9	rh.inferiorparietal_10	rh.precuneus_5	lh.postcentral_21	rh.superiorfrontal_25	Left-Thalamus-Proper	lh.precuneus_16
328 lh.superiorfrontal_20	lh.postcentral_19	rh.rostralmiddlefrontal_18	lh.parsopercularis_8	rh.inferiorparietal_26	lh.fusiform_3	lh.isthmuscingulate_5
329 rh.precentral_10	lh.fusiform_6	lh.inferiorparietal_5	rh.supramarginal_1	rh.precentral_16	lh.isthmuscingulate_6	lh.precuneus_10
330 rh.superiortemporal_21	lh.postcentral_10	rh.precuneus_18	rh.caudalateriorcingulate_2	rh.supramarginal_9	lh.insula_12	rh.supramarginal_19
331 rh.inferiorparietal_4	rh.supramarginal_1	rh.precuneus_7	rh.inferiorparietal_17	lh.inferiortemporal_7	rh.inferiorparietal_8	rh.precentral_35
332 lh.postcentral_9	lh.caudalmiddlefrontal_11	lh.precentral_19	rh.supramarginal_8	rh.lateralorbitofrontal_6	lh.lateraloccipital_23	lh.precuneus_11
333 lh.inferiorparietal_6	lh.parstriangularis_2	Left-Amygdala	rh.lateraloccipital_2	lh.superiorfrontal_21	rh.inferiorparietal_5	lh.inferiorparietal_1
334 rh.superiorfrontal_14	lh.precuneus_17	rh.lateraloccipital_8	lh.superiorfrontal_35	lh.lateraloccipital_23	lh.isthmuscingulate_1	lh.inferioroccipital_20
335 rh.supramarginal_14	lh.supramarginal_18	rh.precentral_29	lh.precuneus_3	rh.postcentral_14	lh.parsopercularis_4	rh.superiorfrontal_6
336 rh.lateraloccipital_3	rh.paracentral_5	rh.precuneus_8	rh.rostralmiddlefrontal_18	lh.lateraloccipital_18	lh.inferiorparietal_9	lh.parsopercularis_10
337 lh.rostralmiddlefrontal_5	rh.precentral_27	lh.paracentral_9	rh.cuneus_6	rh.precentral_10	lh.superiortemporal_24	rh.precuneus_14
338 rh.superiorfrontal_41	rh.precentral_3	rh.superiorfrontal_26	lh.inferiorparietal_5	lh.superiorparietal_22	Right-Putamen	rh.supramarginal_11
339 rh.paracentral_11	rh.paracentral_2	rh.inferiortemporal_15	rh.precentral_14	rh.superiorfrontal_41	rh.insula_9	rh.precentral_15
340 lh.rostralmiddlefrontal_23	rh.inferiorparietal_6	rh.fusiform_9	rh.precentral_16	rh.lateraloccipital_3	lh.caudalmiddlefrontal_10	lh.insula_3
341 rh.lateralorbitofrontal_6	rh.pericalcarine_4	lh.superiorparietal_23	lh.precentral_3	lh.inferiorparietal_9	rh.superiorfrontal_20	lh.paracentral_10
342 rh.rostralmiddlefrontal_14	lh.lateraloccipital_19	lh.rostralmiddlefrontal_15	lh.lateraloccipital_27	lh.insula_12	lh.caudalmiddlefrontal_5	lh.inferiorparietal_15
343 lh.superiorfrontal_43	lh.posteriorcingulate_7	rh.superiorfrontal_1	lh.fusiform_10	rh.precuneus_11	rh.posteriorcingulate_4	rh.postcentral_24
344 lh.rostralateriorcingulate_2	lh.superiorfrontal_24	lh.postcentral_13	lh.paracentral_1	rh.paracentral_5	lh.rostralmiddlefrontal_15	lh.inferiorparietal_8
345 lh.inferiorparietal_9	rh.lateraloccipital_18	rh.cuneus_6	rh.lateraloccipital_4	lh.postcentral_13	lh.postcentral_21	lh.insula_11
346 lh.middletemporal_6	rh.superiorfrontal_37	rh.precentral_9	rh.paracentral_2	rh.superiorparietal_5	lh.medialorbitofrontal_6	lh.precuneus_21
347 lh.precentral_5	lh.superiorfrontal_35	lh.lateraloccipital_9	rh.superiorfrontal_36	lh.bankssts_3	lh.posteriorcingulate_6	lh.isthmuscingulate_6
348 lh.superiorparietal_1	lh.lateraloccipital_8	rh.inferiorparietal_25	lh.inferiorparietal_1	rh.supramarginal_3	rh.parsopercularis_4	lh.postcentral_7
349 lh.superiorfrontal_42	rh.lingual_9	lh.parsopercularis_4	rh.precuneus_7	rh.supramarginal_14	lh.parsopercularis_9	lh.superiorfrontal_19
350 rh.paracentral_2	lh.caudalmiddlefrontal_2	rh.lateraloccipital_16	lh.paracentral_10	lh.superiorfrontal_3	lh.superiorfrontal_16	lh.inferiorparietal_22
351 rh.inferiortemporal_15	lh.caudalmiddlefrontal_6	lh.fusiform_7	lh.rostralmiddlefrontal_13	lh.superiorfrontal_23	lh.lingual_7	rh.precentral_36
352 lh.supramarginal_19	rh.middletemporal_16	rh.supramarginal_1	lh.fusiform_16	lh.inferiorparietal_4	rh.supramarginal_8	lh.superiorfrontal_9
353 lh.inferiorparietal_4	rh.lateraloccipital_2	lh.lingual_17	rh.paracentral_12	rh.parsopercularis_1	lh.posteriorcingulate_1	lh.superiorfrontal_1
354 rh.rostralmiddlefrontal_16	lh.parsopercularis_7	rh.precentral_14	rh.rostralmiddlefrontal_19	lh.precentral_32	lh.precuneus_16	lh.precentral_13
355 rh.superiorfrontal_25	rh.precentral_36	lh.precentral_8	rh.superiorfrontal_21	lh.superiorfrontal_35	rh.lateraloccipital_22	rh.inferiorparietal_23
356 rh.precentral_27	rh.inferiorparietal_16	lh.transversetemporal_2	rh.middletemporal_16	lh.precentral_28	lh.caudalateriorcingulate_1	rh.lateralorbitofrontal_6
357 rh.fusiform_15	lh.paracentral_10	rh.caudalmiddlefrontal_8	lh.precentral_8	lh.parstriangularis_6	rh.insula_12	lh.superiorfrontal_4
358 lh.precentral_32	rh.inferiorparietal_1	rh.lateraloccipital_18	rh.lateraloccipital_10	rh.postcentral_13	lh.inferiorparietal_7	rh.bankssts_1
359 lh.precentral_28	lh.caudalmiddlefrontal_8	rh.postcentral_27	lh.postcentral_10	lh.postcentral_8	lh.precentral_3	rh.precuneus_18
360 lh.superiorparietal_22	rh.parsopercularis_7	rh.rostralmiddlefrontal_22	rh.paracentral_4	lh.rostralmiddlefrontal_17	rh.superiorparietal_16	lh.precentral_32
361 lh.pericalcarine_6	lh.precentral_3	rh.rostralmiddlefrontal_27	lh.cuneus_6	rh.bankssts_3	lh.inferiorparietal_13	rh.precentral_23
362 rh.superiorfrontal_13	lh.rostralmiddlefrontal_26	lh.precentral_3	rh.precuneus_23	rh.precuneus_18	rh.lateralorbitofrontal_16	lh.paracentral_11
363 rh.supramarginal_3	rh.caudalmiddlefrontal_9	rh.inferiorparietal_6	rh.inferiorparietal_6	lh.superiorfrontal_43	rh.superiorfrontal_23	rh.paracentral_7
364 rh.middletemporal_16	rh.superiorfrontal_19	lh.fusiform_15	lh.inferiorparietal_3	lh.superiorparietal_18	rh.precentral_22	rh.superiorparietal_2
365 lh.postcentral_18	lh.inferiorparietal_3	lh.insula_7	lh.pericalcarine_1	rh.superiorparietal_8	lh.paracentral_6	rh.inferiorparietal_9
366 rh.precuneus_18	rh.rostralmiddlefrontal_14	rh.rostralmiddlefrontal_14	rh.superiorfrontal_5	lh.rostralateriorcingulate_5	lh.lingual_17	lh.supramarginal_3

367 Right-Amygdala	rh.superiorfrontal_14	rh.precentral_33	rh.superiorparietal_25	lh.inferioparietal_13	rh.posteriorcingulate_2	rh.precuneus_8
368 lh.insula_7	rh.supramarginal_9	rh.paracentral_4	rh.superiorfrontal_26	lh.lingual_15	lh.caudalmiddlefrontal_13	lh.precuneus_3
369 lh.precentral_12	rh.transverse temporal_3	lh.precuneus_8	rh.insula_5	rh.superioparietal_12	rh.isthmuscingulate_6	lh.precentral_28
370 lh.lateraloccipital_21	rh.superiorfrontal_26	lh.inferioparietal_1	lh.postcentral_5	rh.inferiortemporal_13	lh.precentral_8	lh.insula_6
371 lh.lateraloccipital_5	lh.fusiform_10	rh.inferioparietal_15	rh.precuneus_9	rh.superiorfrontal_34	lh.paracentral_7	lh.insula_1
372 rh.rostral anteriorcingulate_3	lh.fusiform_16	lh.supramarginal_21	rh.superiorfrontal_6	rh.parsopercularis_8	rh.precuneus_7	lh.rostralmiddlefrontal_8
373 lh.precentral_35	lh.superioparietal_23	lh.supramarginal_7	rh.inferioparietal_10	lh.insula_10	rh.inferioparietal_17	rh.precentral_24
374 lh.parahippocampal_5	lh.fusiform_12	lh.parsopercularis_7	lh.caudalmiddlefrontal_11	lh.insula_7	lh.lingual_15	lh.inferioparietal_4
375 rh.superiorfrontal_2	lh.rostralmiddlefrontal_5	rh.pericalcarine_3	rh.superiorfrontal_33	lh.lingual_7	rh.precentral_15	rh.paracentral_8
376 rh.precentral_8	rh.precuneus_11	rh.superioparietal_25	rh.precuneus_11	rh.precentral_13	rh.superioparietal_28	Left-Amygdala
377 rh.precuneus_2	lh.parsopercularis_4	lh.parsopercularis_7	rh.rostralmiddlefrontal_20	lh.precuneus_18	lh.rostralmiddlefrontal_6	rh.precentral_11
378 lh.paracentral_7	rh.insula_8	rh.rostral anteriorcingulate_3	lh.supramarginal_18	lh.rostral anteriorcingulate_3	rh.supramarginal_12	lh.rostral anteriorcingulate_1
379 rh.superioparietal_2	rh.inferioparietal_3	lh.rostralmiddlefrontal_26	lh.caudalmiddlefrontal_2	rh.middletemporal_16	rh.temporalpole_2	lh.supramarginal_10
380 rh.precuneus_21	lh.isthmuscingulate_1	rh.superioparietal_2	lh.superiorfrontal_25	lh.inferioparietal_6	lh.posteriorcingulate_9	lh.precentral_25
381 rh.precuneus_11	lh.postcentral_5	lh.cuneus_2	lh.lateraloccipital_20	rh.superioparietal_16	lh.paracentral_5	rh.supramarginal_6
382 lh.postcentral_12	rh.insula_4	rh.inferioparietal_19	lh.bankssts_6	rh.superioparietal_2	lh.superiorfrontal_4	lh.insula_2
383 lh.inferioparietal_3	rh.precuneus_2	lh.fusiform_10	lh.precuneus_17	rh.precentral_35	rh.medialorbitofrontal_8	rh.superiorfrontal_18
384 lh.inferioparietal_13	lh.bankssts_6	rh.superiorfrontal_33	rh.rostralmiddlefrontal_14	lh.supramarginal_12	rh.lateralorbitofrontal_13	lh.insula_7
385 rh.supramarginal_1	lh.paracentral_1	rh.precuneus_13	lh.lateraloccipital_9	lh.superioparietal_21	lh.precentral_4	rh.supramarginal_4
386 lh.parstriangularis_6	rh.paracentral_4	rh.supramarginal_9	rh.precuneus_2	lh.inferioparietal_19	lh.supramarginal_14	rh.precuneus_23
387 lh.inferiortemporal_16	rh.precentral_14	lh.precentral_11	lh.superiorfrontal_19	lh.postcentral_9	rh.superiorfrontal_5	rh.supramarginal_12
388 lh.bankssts_6	rh.lateraloccipital_16	lh.postcentral_21	lh.lingual_16	lh.lingual_2	lh.supramarginal_10	lh.inferioparietal_9
389 rh.superiorfrontal_26	lh.rostralmiddlefrontal_22	lh.rostral anteriorcingulate_2	rh.postcentral_11	lh.rostralmiddlefrontal_6	lh.inferioparietal_18	rh.supramarginal_7
390 rh.precentral_32	rh.postcentral_14	rh.paracentral_12	rh.cuneus_5	rh.precentral_27	lh.precentral_21	rh.superiorfrontal_23
391 rh.inferioparietal_7	lh.fusiform_15	lh.fusiform_12	rh.inferioparietal_25	lh.precentral_5	lh.precentral_7	rh.superiorfrontal_41
392 rh.middletemporal_4	rh.lateraloccipital_11	rh.transverse temporal_3	lh.superioparietal_17	lh.paracentral_10	lh.postcentral_8	lh.isthmuscingulate_6
393 lh.lingual_17	rh.rostralmiddlefrontal_22	rh.superiorfrontal_5	rh.precentral_36	rh.paracentral_4	rh.caudal anteriorcingulate_2	lh.superiorfrontal_37
394 rh.supramarginal_20	rh.superiorfrontal_16	lh.cuneus_4	rh.rostralmiddlefrontal_27	rh.parsopercularis_4	lh.insula_14	lh.insula_5
395 rh.inferioparietal_26	lh.cuneus_2	rh.superioparietal_5	rh.rostralmiddlefrontal_4	rh.superioparietal_26	rh.lingual_17	rh.supramarginal_5
396 lh.rostralmiddlefrontal_17	rh.lateraloccipital_19	rh.superiorfrontal_12	rh.superiorfrontal_14	rh.inferioparietal_10	lh.insula_11	rh.medialorbitofrontal_4
397 rh.postcentral_7	lh.inferioparietal_22	rh.supramarginal_3	rh.middletemporal_15	rh.precentral_8	lh.inferiortemporal_15	rh.superioparietal_29
398 rh.superioparietal_5	lh.lingual_11	lh.fusiform_16	lh.superiorfrontal_6	lh.transverse temporal_2	lh.superiortemporal_11	Left-Accumbens-area
399 lh.superiortemporal_9	lh.inferioparietal_7	rh.paracentral_5	rh.precentral_30	rh.inferioparietal_7	rh.paracentral_12	rh.paracentral_10
400 rh.precentral_35	rh.postcentral_11	lh.precuneus_17	lh.rostralmiddlefrontal_5	rh.lingual_15	Left-Putamen	lh.precuneus_2
401 rh.fusiform_14	lh.postcentral_30	rh.precentral_27	rh.pericalcarine_3	rh.supramarginal_20	lh.superiorfrontal_2	rh.precentral_26
402 lh.supramarginal_6	rh.parstriangularis_8	lh.precuneus_16	lh.caudalmiddlefrontal_6	lh.rostralmiddlefrontal_21	lh.inferioparietal_8	rh.lateralorbitofrontal_15
403 lh.superioparietal_18	rh.paracentral_12	rh.fusiform_12	rh.cuneus_8	lh.middletemporal_6	rh.lateralorbitofrontal_5	rh.middletemporal_16
404 rh.rostralmiddlefrontal_2	rh.supramarginal_3	lh.parsopercularis_1	rh.superioparietal_5	lh.rostralmiddlefrontal_10	rh.precentral_24	rh.middletemporal_2
405 rh.postcentral_2	rh.postcentral_9	lh.parstriangularis_2	rh.supramarginal_9	lh.supramarginal_6	rh.superioparietal_17	rh.rostralmiddlefrontal_11
406 lh.paracentral_10	rh.superioparietal_5	rh.inferioparietal_3	lh.superiorfrontal_4	lh.fusiform_11	rh.precentral_9	rh.insula_5
407 lh.superiortemporal_20	rh.isthmuscingulate_2	lh.precentral_28	lh.superiorfrontal_40	rh.superiortemporal_21	rh.inferiortemporal_5	lh.precentral_2
408 rh.paracentral_5	lh.superiorfrontal_34	lh.posteriorcingulate_7	rh.caudalmiddlefrontal_9	rh.rostralmiddlefrontal_7	rh.inferioparietal_14	rh.lateraloccipital_3
409 lh.superiorfrontal_3	lh.precentral_12	lh.superiorfrontal_25	lh.parstriangularis_2	lh.paracentral_9	rh.caudalmiddlefrontal_5	lh.precuneus_1
410 lh.supramarginal_13	lh.caudal anteriorcingulate_5	lh.rostralmiddlefrontal_23	lh.precentral_19	lh.precentral_3	rh.paracentral_2	rh.supramarginal_20
411 rh.parsopercularis_8	rh.postcentral_8	lh.caudalmiddlefrontal_11	lh.lingual_5	lh.paracentral_1	lh.supramarginal_15	lh.precentral_20
412 rh.postcentral_11	lh.precentral_13	rh.precentral_30	lh.lateraloccipital_2	rh.lingual_5	lh.precentral_13	lh.supramarginal_6

413 rh.superioparietal_12	lh.precentral_35	lh.postcentral_5	lh.rostralmiddlefrontal_10	rh.postcentral_2	rh.posteriorcingulate_6	rh.precentral_19
414 lh.superiorfrontal_26	lh.inferioparietal_9	lh.inferioparietal_4	rh.inferioparietal_9	lh.superioparietal_12	lh.superioparietal_28	rh.superiorfrontal_16
415 lh.rostralanteriorcingulate_5	rh.precuneus_5	lh.rostralmiddlefrontal_5	rh.parsopercularis_7	rh.precentral_14	rh.supramarginal_17	rh.precuneus_1
416 rh.rostralanteriorcingulate_4	rh.caudalanteriorcingulate_4	rh.inferioparietal_16	lh.precentral_12	rh.rostralmiddlefrontal_3	rh.precuneus_18	rh.rostralmiddlefrontal_15
417 rh.lateraloccipital_7	lh.posteriorcingulate_3	rh.parstriangularis_8	rh.supramarginal_3	lh.caudalmiddlefrontal_12	lh.caudalmiddlefrontal_12	rh.rostralmiddlefrontal_6
418 rh.lateraloccipital_22	lh.precentral_11	rh.precentral_16	rh.inferioparietal_19	lh.precentral_19	lh.paracentral_1	rh.inferioparietal_7
419 lh.supramarginal_20	lh.caudalmiddlefrontal_7	lh.caudalmiddlefrontal_6	rh.inferioparietal_1	lh.superioparietal_4	rh.parstriangularis_4	lh.precentral_16
420 lh.cuneus_1	rh.parsopercularis_5	lh.insula_12	rh.precentral_3	rh.superiorfrontal_35	lh.precuneus_18	lh.supramarginal_2
421 rh.postcentral_5	lh.postcentral_13	lh.superiorfrontal_34	rh.precentral_35	rh.supramarginal_1	lh.rostralmiddlefrontal_12	lh.middletemporal_12
422 rh.fusiform_17	rh.superiorfrontal_1	rh.superiorfrontal_21	rh.precentral_24	rh.rostralmiddlefrontal_4	rh.superioparietal_20	rh.inferioparietal_5
423 lh.postcentral_5	rh.precentral_32	rh.caudalmiddlefrontal_9	lh.superiorfrontal_30	lh.superiorfrontal_26	rh.superiorfrontal_30	rh.postcentral_2
424 rh.parsopercularis_1	rh.middletemporal_15	lh.precentral_5	lh.cuneus_4	lh.superioparietal_1	lh.supramarginal_2	rh.precentral_30
425 rh.caudalanteriorcingulate_6	lh.cuneus_6	rh.superiorfrontal_21	rh.precentral_35	rh.postcentral_11	lh.precentral_19	lh.superiorfrontal_7
426 lh.inferioparietal_10	rh.precentral_35	rh.paracentral_2	rh.caudalmiddlefrontal_8	lh.lateraloccipital_5	rh.precuneus_23	lh.postcentral_30
427 rh.superioparietal_21	rh.caudalmiddlefrontal_7	lh.supramarginal_18	rh.precentral_32	rh.caudalanteriorcingulate_6	rh.precuneus_12	rh.precuneus_13
428 rh.bankssts_4	lh.superioparietal_10	rh.precentral_32	lh.caudalanteriorcingulate_4	rh.precentral_24	lh.supramarginal_21	rh.precentral_10
429 rh.superiorfrontal_16	lh.parsopercularis_1	rh.precuneus_9	rh.precentral_5	lh.precuneus_5	lh.rostralmiddlefrontal_24	Right-Accumbens-area
430 lh.rostralmiddlefrontal_6	lh.superiorfrontal_18	rh.middletemporal_16	lh.parsopercularis_7	lh.parahippocampal_5	lh.rostralmiddlefrontal_16	rh.superioparietal_28
431 lh.postcentral_14	lh.superiorfrontal_25	lh.bankssts_6	lh.inferioparietal_9	rh.inferiorfrontal_15	rh.superiorfrontal_16	lh.parsopercularis_2
432 lh.middletemporal_1	rh.precentral_24	rh.superiorfrontal_14	rh.inferioparietal_16	rh.precentral_32	lh.caudalmiddlefrontal_6	lh.supramarginal_17
433 rh.supramarginal_16	rh.inferioparietal_2	lh.superioparietal_18	rh.inferiorfrontal_3	lh.precuneus_2	rh.precuneus_11	rh.lateraloccipital_5
434 rh.superioparietal_16	lh.precentral_5	rh.isthmuscingulate_2	rh.fusiform_8	rh.parstriangularis_6	rh.precuneus_15	lh.supramarginal_4
435 rh.pericalcarine_1	rh.rostralmiddlefrontal_4	rh.fusiform_15	rh.postcentral_14	rh.rostralmiddlefrontal_15	lh.lateraloccipital_7	lh.superiorfrontal_45
436 rh.lingual_7	lh.superioparietal_18	lh.postcentral_15	rh.superioparietal_1	lh.inferioparietal_3	lh.inferioparietal_1	rh.supramarginal_13
437 lh.superiorfrontal_35	lh.supramarginal_6	rh.superiorfrontal_16	rh.postcentral_8	lh.precuneus_16	rh.inferioparietal_9	rh.rostralanteriorcingulate_1
438 lh.fusiform_16	lh.precuneus_10	lh.postcentral_30	lh.superiorfrontal_33	lh.superiorfrontal_25	rh.middletemporal_19	rh.precentral_22
439 rh.parahippocampal_2	lh.precentral_32	lh.supramarginal_5	rh.lateraloccipital_14	lh.supramarginal_13	lh.medialorbitofrontal_2	lh.precentral_21
440 rh.rostralmiddlefrontal_7	lh.postcentral_18	lh.superiorfrontal_24	lh.superioparietal_18	rh.rostralanteriorcingulate_4	rh.superioparietal_7	rh.caudalanteriorcingulate_6
441 rh.superioparietal_26	rh.precuneus_18	rh.precentral_36	lh.supramarginal_6	lh.precentral_35	lh.fusiform_11	lh.superiorfrontal_26
442 rh.lateraloccipital_2	rh.superioparietal_2	rh.postcentral_6	rh.superiorfrontal_8	rh.rostralmiddlefrontal_27	lh.inferioparietal_4	lh.postcentral_10
443 lh.precentral_3	rh.lateraloccipital_4	lh.fusiform_6	lh.postcentral_30	lh.postcentral_12	lh.parsopercularis_2	rh.insula_3
444 lh.supramarginal_5	lh.precentral_19	lh.precentral_35	lh.fusiform_5	lh.parsopercularis_5	lh.supramarginal_4	rh.posteriorcingulate_9
445 rh.rostralmiddlefrontal_15	lh.rostralmiddlefrontal_23	lh.superiorfrontal_40	lh.rostralmiddlefrontal_26	rh.precentral_11	rh.precentral_30	rh.precuneus_5
446 rh.superiorfrontal_34	rh.superiorfrontal_33	lh.superiorfrontal_18	lh.precuneus_2	lh.inferioparietal_8	lh.rostralmiddlefrontal_22	lh.insula_16
447 lh.insula_10	rh.rostralmiddlefrontal_27	lh.insula_3	lh.superiorfrontal_36	rh.paracentral_12	rh.postcentral_8	rh.precentral_8
448 rh.precentral_24	lh.rostralmiddlefrontal_10	rh.precentral_8	lh.lingual_4	lh.superiorfrontal_17	rh.inferioparietal_18	rh.superiorfrontal_5
449 lh.precuneus_2	lh.inferiorfrontal_3	rh.inferioparietal_9	rh.transversetemporal_3	rh.superioparietal_17	rh.paracentral_5	rh.postcentral_27
450 lh.lateraloccipital_3	rh.superiorfrontal_6	lh.cuneus_6	lh.caudalanteriorcingulate_5	rh.supramarginal_4	rh.caudalanteriorcingulate_3	rh.posteriorcingulate_4
451 rh.paracentral_4	rh.superiorfrontal_21	rh.inferioparietal_10	rh.precentral_11	lh.bankssts_6	rh.lateraloccipital_23	rh.inferiorfrontal_16
452 rh.postcentral_6	lh.transversetemporal_2	rh.insula_15	lh.parsopercularis_4	lh.lateraloccipital_21	rh.inferioparietal_4	lh.lateraloccipital_18
453 rh.superioparietal_3	lh.superioparietal_15	rh.middletemporal_15	lh.precentral_11	lh.inferioparietal_11	lh.middletemporal_6	lh.inferioparietal_14
454 rh.bankssts_6	rh.superiorfrontal_5	rh.postcentral_8	rh.inferioparietal_3	lh.postcentral_5	lh.precuneus_15	rh.paracentral_6
455 lh.superioparietal_21	lh.precuneus_2	rh.precentral_24	lh.cuneus_3	lh.inferiorfrontal_16	lh.precentral_16	lh.supramarginal_11
456 lh.precuneus_7	lh.superiorfrontal_6	rh.precuneus_2	lh.rostralmiddlefrontal_22	lh.precuneus_1	rh.precentral_19	rh.supramarginal_14
457 lh.fusiform_10	rh.precentral_30	lh.parsopercularis_9	rh.superioparietal_2	rh.caudalmiddlefrontal_2	rh.parstriangularis_6	lh.precentral_11
458 rh.fusiform_2	lh.lingual_17	rh.lingual_16	lh.posteriorcingulate_7	lh.lateralorbitofrontal_5	lh.lingual_6	lh.superiorfrontal_43

459 lh.lateralorbitofrontal_10	lh.postcentral_8	rh.postcentral_14	lh.inferioparietal_7	lh.precentral_17	rh.posteriorcingulate_3	lh.postcentral_31
460 lh.superiorfrontal_21	rh.superioparietal_15	lh.superiorfrontal_9	rh.precuneus_18	lh.precuneus_7	lh.insula_17	rh.postcentral_11
461 lh.rostralanteriorcingulate_3	lh.rostralanteriorcingulate_5	lh.lingual_5	lh.caudalmiddlefrontal_7	rh.superiorfrontal_19	rh.paracentral_7	lh.superiorfrontal_28
462 lh.inferiortemporal_3	rh.cuneus_6	lh.supramarginal_6	lh.postcentral_18	rh.precuneus_21	lh.supramarginal_6	lh.bankssts_4
463 rh.precentral_13	rh.precentral_34	lh.caudalmiddlefrontal_2	lh.precentral_32	rh.precuneus_2	rh.lateraloccipital_13	lh.precentral_7
464 rh.middletemporal_15	lh.superiorfrontal_19	lh.inferioparietal_9	lh.isthmuscingulate_1	rh.precuneus_14	rh.precentral_7	lh.superiorfrontal_8
465 rh.precentral_11	lh.superioparietal_22	rh.parsopercularis_5	rh.superiorfrontal_15	lh.postcentral_14	rh.fusiform_16	lh.inferioparietal_16
466 rh.supramarginal_4	rh.precentral_11	rh.caudalmiddlefrontal_3	rh.postcentral_9	Left-Amygdala	lh.rostralmiddlefrontal_11	rh.supramarginal_9
467 rh.parsopercularis_4	rh.caudalanteriorcingulate_1	rh.cuneus_8	lh.precentral_5	lh.supramarginal_5	rh.precuneus_21	lh.precuneus_7
468 lh.precentral_29	lh.rostralmiddlefrontal_15	lh.superiorfrontal_19	lh.postcentral_13	rh.fusiform_15	rh.precentral_16	lh.isthmuscingulate_1
469 lh.paracentral_9	rh.middletemporal_4	rh.inferioparietal_1	rh.parsopercularis_5	rh.postcentral_6	rh.rostralmiddlefrontal_15	rh.precentral_27
470 lh.inferioparietal_19	rh.superiortemporal_21	rh.caudalmiddlefrontal_7	rh.rostralmiddlefrontal_22	rh.precuneus_13	lh.parsopercularis_8	lh.supramarginal_19
471 lh.precuneus_1	rh.precentral_5	rh.superiorfrontal_32	lh.fusiform_1	lh.lateraloccipital_7	Left-Caudate	lh.bankssts_2
472 lh.inferiortemporal_12	rh.cuneus_8	lh.lingual_4	lh.rostralanteriorcingulate_5	lh.rostralmiddlefrontal_3	lh.superiorfrontal_17	rh.precentral_5
473 rh.lateraloccipital_6	rh.superiorfrontal_34	lh.superiorfrontal_35	rh.caudalmiddlefrontal_7	lh.supramarginal_10	rh.posteriorcingulate_9	lh.superiorfrontal_36
474 lh.superiorfrontal_32	lh.supramarginal_13	rh.rostralmiddlefrontal_2	rh.lingual_14	rh.superioparietal_28	lh.lateralorbitofrontal_11	rh.superiorfrontal_33
475 lh.caudalmiddlefrontal_12	rh.precentral_8	lh.lateraloccipital_22	lh.inferiortemporal_12	lh.rostralanteriorcingulate_1	rh.superioparietal_21	rh.inferioparietal_10
476 lh.superioparietal_26	lh.inferiortemporal_12	lh.precentral_2	lh.precuneus_16	lh.rostralmiddlefrontal_7	lh.posteriorcingulate_2	lh.superioparietal_2
477 lh.precuneus_16	lh.precuneus_16	rh.superioparietal_12	rh.insula_8	rh.superiorfrontal_37	lh.precuneus_3	lh.insula_17
478 rh.precuneus_22	lh.lateraloccipital_9	lh.supramarginal_13	lh.lingual_17	lh.rostralanteriorcingulate_4	lh.insula_2	rh.parstriangularis_4
479 rh.precuneus_13	lh.supramarginal_5	rh.cuneus_5	lh.precentral_13	rh.supramarginal_16	lh.superiorfrontal_28	lh.inferioparietal_17
480 rh.lingual_3	rh.caudalmiddlefrontal_4	rh.inferioparietal_2	lh.parsopercularis_1	rh.bankssts_6	lh.inferioparietal_10	rh.postcentral_26
481 lh.postcentral_3	rh.insula_7	rh.lateraloccipital_4	lh.superioparietal_10	lh.lingual_17	lh.isthmuscingulate_4	rh.superioparietal_7
482 lh.inferioparietal_8	rh.fusiform_8	rh.lateralorbitofrontal_6	rh.superiorfrontal_12	lh.insula_1	Right-Caudate	lh.bankssts_5
483 lh.lingual_12	lh.middletemporal_1	rh.postcentral_11	rh.superiorfrontal_34	rh.middletemporal_4	rh.lingual_7	rh.precentral_31
484 rh.precuneus_15	lh.precuneus_21	lh.precentral_29	lh.rostralmiddlefrontal_23	rh.middletemporal_15	rh.lateraloccipital_7	lh.superiortemporal_24
485 lh.precuneus_5	rh.precentral_13	rh.lateraloccipital_10	lh.inferioparietal_22	rh.parsopercularis_3	lh.inferioparietal_11	lh.superioparietal_14
486 lh.lingual_6	lh.bankssts_3	rh.insula_2	rh.fusiform_13	lh.superioparietal_26	rh.parsopercularis_7	Brain-Stem
487 lh.fusiform_7	rh.postcentral_13	lh.inferiortemporal_3	rh.insula_4	rh.postcentral_5	rh.insula_5	lh.superiorfrontal_39
488 lh.middletemporal_10	lh.inferioparietal_4	rh.lingual_7	lh.precuneus_10	rh.superiorfrontal_24	rh.superioparietal_3	rh.superioparietal_3
489 rh.superiorfrontal_35	lh.lingual_5	lh.superiorfrontal_13	rh.isthmuscingulate_2	rh.superiorfrontal_3	rh.precentral_25	lh.postcentral_21
490 rh.superioparietal_28	lh.supramarginal_19	lh.superiorfrontal_10	rh.inferiortemporal_14	lh.superiorfrontal_14	rh.caudalmiddlefrontal_7	lh.supramarginal_7
491 lh.superioparietal_4	rh.superiorfrontal_35	lh.precentral_32	lh.superiorfrontal_5	lh.supramarginal_20	rh.lateralorbitofrontal_6	rh.middletemporal_13
492 lh.lateraloccipital_7	rh.lateraloccipital_10	rh.middletemporal_4	lh.supramarginal_5	lh.precentral_29	rh.insula_4	lh.superioparietal_8
493 lh.middletemporal_14	rh.fusiform_13	rh.cuneus_7	rh.precentral_21	rh.lateraloccipital_6	lh.parstriangularis_1	rh.superiorfrontal_15
494 rh.lingual_17	rh.lingual_7	rh.rostralanteriorcingulate_4	rh.superiorfrontal_35	Right-Accumbens-area	Left-Pallidum	rh.superiorfrontal_1
495 lh.paracentral_1	rh.inferioparietal_4	lh.lateraloccipital_2	rh.precentral_13	lh.superiorfrontal_13	lh.insula_8	rh.postcentral_6
496 lh.superioparietal_12	lh.superiorfrontal_4	lh.lateraloccipital_8	lh.posteriorcingulate_3	rh.lateraloccipital_2	lh.superiorfrontal_45	lh.superioparietal_26
497 lh.inferioparietal_11	lh.superioparietal_19	lh.rostralmiddlefrontal_10	lh.superiorfrontal_9	rh.lateraloccipital_1	lh.superiorfrontal_11	rh.supramarginal_1
498 lh.lateraloccipital_22	lh.superiorfrontal_17	lh.superiorfrontal_33	rh.middletemporal_4	lh.superiortemporal_9	rh.parsopercularis_5	rh.superiorfrontal_10
499 rh.precuneus_12	rh.postcentral_2	lh.precentral_12	lh.superiorfrontal_17	rh.fusiform_14	rh.superiorfrontal_12	rh.precentral_5
500 lh.parsopercularis_5	lh.lateraloccipital_20	lh.superioparietal_17	lh.supramarginal_13	lh.superiortemporal_20	lh.insula_7	rh.rostralanteriorcingulate_4
501 lh.superiorfrontal_23	rh.parstriangularis_3	lh.superiorfrontal_30	rh.caudalanteriorcingulate_4	lh.inferioparietal_19	rh.paracentral_11	lh.superiorfrontal_5
502 lh.fusiform_6	rh.inferiortemporal_14	rh.superiorfrontal_20	rh.parstriangularis_8	lh.middletemporal_10	rh.paracentral_8	rh.lateraloccipital_6
503 lh.superiortemporal_25	rh.superiorfrontal_36	rh.precentral_3	lh.superioparietal_22	lh.superiorfrontal_10	rh.lateraloccipital_6	rh.lateralorbitofrontal_8
504 Left-Amygdala	rh.inferioparietal_11	lh.precuneus_2	rh.precuneus_5	rh.superiorfrontal_16	lh.caudalanteriorcingulate_2	lh.medialorbitofrontal_5

505 lh.supramarginal_10	lh.supramarginal_10	rh.postcentral_3	lh.middletemporal_1	rh.superiorparietal_21	rh.caudalmiddlefrontal_4	rh.lateralorbitofrontal_14
506 lh.postcentral_19	rh.cuneus_5	lh.insula_17	lh.postcentral_15	rh.superiortemporal_16	lh.postcentral_28	rh.bankssts_5
507 lh.transverse temporal_3	lh.parsopercularis_9	rh.superiorfrontal_35	lh.superiorfrontal_10	lh.lateralorbitofrontal_10	rh.parsopercularis_3	lh.supramarginal_13
508 rh.parstriangularis_6	lh.parahippocampal_5	lh.lateraloccipital_20	lh.superiorfrontal_15	lh.pericalcarine_6	lh.caudalmiddlefrontal_7	lh.supramarginal_8
509 rh.caudalmiddlefrontal_2	lh.superiorfrontal_36	lh.superiorfrontal_5	lh.supramarginal_10	rh.lateraloccipital_22	rh.insula_8	lh.postcentral_19
510 rh.superiorparietal_17	rh.superiorparietal_21	rh.superiorparietal_26	lh.superiorparietal_15	rh.precentral_25	lh.parsorbitalis_1	lh.middletemporal_15
511 rh.precuneus_14	rh.rostralmiddlefrontal_2	rh.rostralmiddlefrontal_13	rh.precentral_8	lh.superiorfrontal_37	rh.supramarginal_13	lh.precentral_14
512 rh.fusiform_13	lh.precentral_21	lh.postcentral_18	lh.rostralmiddlefrontal_21	rh.rostralmiddlefrontal_13	rh.superiorfrontal_41	lh.middletemporal_10
513 rh.superior temporal_11	lh.pericalcarine_1	lh.superior temporal_9	rh.superiorfrontal_32	rh.superiorfrontal_18	lh.superiorparietal_5	lh.precentral_29
514 lh.rostralmiddlefrontal_21	lh.rostralmiddlefrontal_21	rh.inferiorparietal_11	lh.transverse temporal_2	lh.lateralorbitofrontal_8	lh.parsopercularis_10	rh.postcentral_9
515 lh.superiorfrontal_17	lh.middletemporal_10	rh.caudalmiddlefrontal_4	rh.lingual_7	rh.insula_3	rh.inferior temporal_9	rh.superiorfrontal_30
516 lh.precentral_19	lh.inferiorparietal_10	lh.insula_10	rh.paracentral_6	lh.lateraloccipital_3	rh.middletemporal_13	rh.precuneus_3
517 lh.rostral anteriorcingulate_1	lh.parsopercularis_3	lh.superiorparietal_10	lh.middletemporal_10	lh.postcentral_19	rh.pericalcarine_8	lh.inferiorparietal_6
518 lh.supramarginal_9	rh.parahippocampal_2	lh.rostralmiddlefrontal_21	rh.lingual_1	lh.precentral_5	rh.inferiorparietal_11	rh.precentral_5
519 lh.precuneus_19	lh.lateraloccipital_2	lh.superiorfrontal_17	lh.postcentral_8	lh.superiorfrontal_7	rh.middletemporal_9	lh.temporalpole_2
520 lh.lateraloccipital_17	lh.precentral_29	lh.fusiform_5	rh.superior temporal_21	rh.rostral anteriorcingulate_2	rh.paracentral_3	lh.supramarginal_5
521 rh.precentral_14	lh.postcentral_9	rh.postcentral_9	rh.cuneus_1	lh.inferior temporal_12	rh.medialorbitofrontal_6	rh.precentral_21
522 rh.paracentral_12	lh.superiorparietal_17	rh.precentral_11	lh.superiorfrontal_13	lh.parsopercularis_10	rh.insula_13	lh.inferior temporal_15
523 Right-Accumbens-area	lh.cuneus_4	rh.rostralmiddlefrontal_4	lh.superiorfrontal_12	lh.supramarginal_9	lh.precentral_34	lh.superiorfrontal_6
524 lh.fusiform_12	rh.pericalcarine_3	rh.inferior temporal_12	rh.inferior temporal_12	lh.lateraloccipital_17	rh.superiorfrontal_24	rh.superiorfrontal_4
525 lh.rostralmiddlefrontal_10	rh.superiorparietal_26	rh.precuneus_14	lh.pericalcarine_7	rh.middletemporal_13	rh.insula_7	rh.precentral_32
526 lh.insula_1	lh.precentral_20	lh.superiorparietal_4	lh.superiorfrontal_20	rh.bankssts_4	lh.temporalpole_2	lh.supramarginal_9
527 lh.fusiform_8	rh.supramarginal_14	rh.superiorfrontal_15	rh.rostralmiddlefrontal_13	lh.precuneus_19	lh.bankssts_5	lh.lateraloccipital_17
528 rh.rostralmiddlefrontal_4	rh.fusiform_5	lh.inferiorparietal_22	lh.fusiform_5	rh.precuneus_15	lh.precentral_30	lh.superiorfrontal_34
529 rh.supramarginal_2	lh.precuneus_7	rh.insula_12	lh.precentral_29	lh.inferior temporal_3	rh.middletemporal_16	rh.lateraloccipital_17
530 rh.parahippocampal_3	rh.superiorparietal_1	rh.superiorparietal_16	rh.precentral_34	Left-Accumbens-area	rh.precuneus_13	lh.precuneus_19
531 rh.middletemporal_13	lh.fusiform_1	rh.precentral_13	lh.inferiorparietal_4	rh.rostral anteriorcingulate_1	rh.insula_14	rh.bankssts_6
532 lh.precentral_14	lh.precentral_14	lh.supramarginal_10	lh.lateraloccipital_14	rh.supramarginal_11	rh.rostralmiddlefrontal_16	lh.precentral_24
533 lh.fusiform_17	Right-Amygdala	lh.superiorfrontal_4	rh.superiorparietal_21	rh.insula_2	lh.inferiorparietal_6	lh.postcentral_13
534 lh.middletemporal_3	lh.inferiorparietal_13	rh.supramarginal_14	rh.postcentral_2	lh.precentral_14	rh.caudalmiddlefrontal_2	rh.superiorparietal_8
535 rh.superiorfrontal_16	rh.posteriorcingulate_4	rh.lateraloccipital_14	lh.rostralmiddlefrontal_15	lh.superiorfrontal_45	lh.postcentral_31	lh.inferiorparietal_19
536 lh.middletemporal_13	lh.superiorfrontal_10	lh.middletemporal_1	lh.supramarginal_19	lh.fusiform_16	rh.paracentral_4	lh.supramarginal_1
537 rh.insula_3	rh.cuneus_1	lh.parsopercularis_3	lh.parahippocampal_2	rh.parahippocampal_2	lh.rostralmiddlefrontal_2	lh.postcentral_14
538 lh.superiorfrontal_25	lh.superiorfrontal_13	lh.inferiorparietal_13	rh.cuneus_7	rh.fusiform_2	rh.precuneus_2	rh.superiorfrontal_9
539 rh.inferior temporal_14	rh.superiorfrontal_8	lh.precentral_22	rh.postcentral_3	lh.precentral_24	lh.superior temporal_7	rh.temporalpole_2
540 lh.pericalcarine_5	rh.precuneus_15	lh.inferiorparietal_8	lh.inferiorparietal_10	rh.superiorparietal_3	lh.entorhinal_3	rh.parstriangularis_7
541 rh.superiorfrontal_3	lh.lateraloccipital_22	lh.superiorfrontal_6	rh.rostralmiddlefrontal_2	rh.precentral_30	lh.superiorfrontal_7	rh.postcentral_30
542 rh.inferiorparietal_5	lh.fusiform_5	rh.parahippocampal_2	lh.precentral_2	lh.lateralorbitofrontal_1	lh.posteriorcingulate_8	lh.postcentral_14
543 rh.lateraloccipital_23	lh.postcentral_12	lh.bankssts_5	lh.precuneus_7	lh.superiorfrontal_28	Right-Amygdala	rh.superiorfrontal_32
544 lh.superiorfrontal_7	rh.lateraloccipital_14	lh.superiorfrontal_36	lh.precuneus_21	rh.postcentral_7	rh.insula_6	rh.precentral_6
545 lh.precentral_24	rh.paracentral_6	rh.inferiorparietal_4	rh.superiorparietal_26	rh.superiorfrontal_6	rh.superiorfrontal_33	lh.postcentral_9
546 rh.rostralmiddlefrontal_3	lh.superiorfrontal_30	lh.precuneus_10	rh.inferiorparietal_2	rh.lateraloccipital_17	lh.lateraloccipital_22	rh.superiorfrontal_1
547 lh.superiorfrontal_37	rh.lingual_1	lh.precentral_13	lh.parahippocampal_5	rh.superiorparietal_29	rh.superiorfrontal_21	lh.middletemporal_12
548 lh.precentral_17	rh.superiorparietal_16	rh.precentral_21	rh.caudalmiddlefrontal_4	lh.fusiform_10	rh.superiorfrontal_18	lh.inferior temporal_7
549 lh.cuneus_6	rh.precuneus_14	rh.superiorfrontal_8	rh.lingual_2	rh.precentral_5	lh.superiorfrontal_34	lh.middletemporal_6
550 rh.superiorfrontal_18	rh.insula_14	rh.precentral_18	lh.lateraloccipital_22	lh.middletemporal_3	rh.caudalanteriorcingulate_5	lh.insula_12

551 rh.rostralanteriorcingulate_1	rh.inferioparietal_7	rh.precentral_34	lh.paracentral_8	lh.superiorfrontal_1	rh.superiorfrontal_6	rh.superiorfrontal_21
552 rh.lateraloccipital_17	rh.lingual_16	rh.posteriorcingulate_4	rh.inferioparietal_4	lh.middletemporal_13	lh.superiorfrontal_13	rh.precentral_18
553 lh.rostralanteriorcingulate_4	lh.superiorfrontal_15	lh.inferioparietal_7	rh.precuneus_15	rh.precentral_21	rh.inferiortemporal_16	rh.inferiortemporal_13
554 lh.postcentral_25	lh.middletemporal_14	lh.caudalmiddlefrontal_7	lh.postcentral_14	rh.precuneus_12	lh.caudalmiddlefrontal_2	lh.lateraloccipital_23
555 lh.supramarginal_11	rh.bankssts_5	lh.rostralmiddlefrontal_17	rh.precuneus_14	lh.lateraloccipital_22	lh.postcentral_7	rh.superiorfrontal_38
556 lh.superioparietal_5	lh.superioparietal_4	rh.postcentral_2	lh.lingual_9	rh.parstriangularis_7	rh.parsopercularis_1	rh.bankssts_2
557 lh.fusiform_3	lh.insula_12	rh.paracentral_6	rh.precentral_18	lh.lateraloccipital_7	lh.parsopercularis_3	lh.rostralmiddlefrontal_2
558 rh.parstriangularis_7	rh.lingual_2	rh.precentral_5	rh.superiorfrontal_7	lh.superiorfrontal_19	lh.paracentral_2	lh.precuneus_15
559 rh.parsopercularis_3	rh.rostralmiddlefrontal_13	rh.supramarginal_4	lh.cuneus_5	rh.inferiortemporal_14	rh.superiorfrontal_39	lh.parahippocampal_5
560 rh.superiorfrontal_37	rh.precuneus_13	lh.postcentral_9	rh.postcentral_13	lh.postcentral_25	rh.superiorfrontal_28	lh.lateraloccipital_5
561 rh.lingual_2	rh.superioparietal_12	lh.superiorfrontal_14	rh.lateraloccipital_13	lh.medialorbitofrontal_4	lh.precentral_28	rh.precuneus_17
562 rh.fusiform_4	rh.superiorfrontal_15	lh.superioparietal_15	lh.bankssts_3	lh.cuneus_1	rh.postcentral_10	lh.inferioparietal_3
563 rh.precentral_21	lh.bankssts_5	lh.precuneus_7	lh.precentral_22	rh.fusiform_17	rh.precuneus_17	rh.precentral_16
564 rh.fusiform_9	lh.inferioparietal_19	lh.parahippocampal_5	lh.lingual_3	rh.superiorfrontal_33	rh.posteriorcingulate_1	lh.paracentral_2
565 lh.superiorfrontal_45	lh.superiorfrontal_40	lh.paracentral_10	lh.superioparietal_19	rh.fusiform_13	lh.fusiform_13	rh.middletemporal_18
566 rh.rostralmiddlefrontal_27	rh.supramarginal_4	rh.superioparietal_21	rh.caudalanteriorcingulate_1	lh.parahippocampal_3	lh.superiorfrontal_30	lh.postcentral_25
567 rh.cuneus_1	lh.superiortemporal_9	rh.pericalcarine_1	lh.middletemporal_14	lh.superiortemporal_11	lh.supramarginal_19	lh.fusiform_18
568 rh.superiortemporal_6	lh.superiorfrontal_33	lh.lateralorbitofrontal_10	lh.superioparietal_4	rh.paracentral_6	lh.posteriorcingulate_5	rh.superiortemporal_14
569 lh.rostralmiddlefrontal_7	rh.postcentral_3	lh.supramarginal_19	rh.lateraloccipital_12	lh.parsopercularis_2	rh.insula_15	rh.precentral_30
570 lh.superiorfrontal_13	lh.postcentral_15	rh.lingual_1	rh.precentral_31	lh.superiorfrontal_6	lh.superioparietal_9	rh.inferiortemporal_5
571 Left-Accumbens-area	lh.superiorfrontal_9	rh.postcentral_13	rh.fusiform_6	lh.middletemporal_14	rh.postcentral_28	rh.bankssts_3
572 rh.fusiform_12	lh.inferioparietal_8	rh.superioparietal_1	lh.precentral_10	lh.fusiform_6	lh.lateraloccipital_11	rh.superiorfrontal_30
573 rh.precentral_4	Left-Amygdala	rh.fusiform_8	lh.parsopercularis_9	lh.inferioparietal_14	lh.caudalanteriorcingulate_3	rh.lateraloccipital_7
574 rh.precentral_25	lh.lingual_9	lh.inferioparietal_19	rh.precuneus_13	lh.superioparietal_28	lh.superiorfrontal_36	rh.supramarginal_16
575 lh.superiorfrontal_24	rh.insula_15	lh.supramarginal_12	lh.parsopercularis_3	lh.precentral_7	rh.superioparietal_4	rh.inferiortemporal_14
576 lh.fusiform_5	lh.cuneus_3	lh.pericalcarine_7	rh.pericalcarine_8	lh.supramarginal_8	rh.postcentral_30	lh.postcentral_12
577 rh.precentral_5	rh.caudalanteriorcingulate_6	rh.precentral_25	Right-Amygdala	rh.supramarginal_2	lh.fusiform_18	lh.rostralmiddlefrontal_24
578 lh.superiorfrontal_28	lh.precuneus_5	lh.precentral_10	lh.inferioparietal_13	lh.fusiform_7	lh.lateralorbitofrontal_15	rh.supramarginal_15
579 rh.lateraloccipital_15	lh.superiorfrontal_5	lh.inferioparietal_10	lh.superioparietal_9	rh.precuneus_22	lh.postcentral_2	lh.middletemporal_13
580 rh.inferiortemporal_6	lh.supramarginal_12	lh.precentral_20	rh.superioparietal_16	lh.transversetemporal_3	rh.inferiortemporal_13	rh.precuneus_15
581 lh.parsopercularis_10	rh.precentral_10	rh.insula_3	lh.postcentral_9	lh.postcentral_3	lh.paracentral_8	lh.bankssts_3
582 lh.middletemporal_7	rh.precuneus_21	lh.insula_1	rh.postcentral_20	lh.superiortemporal_25	rh.superioparietal_6	lh.rostralmiddlefrontal_12
583 rh.precentral_30	rh.insula_9	lh.inferioparietal_11	rh.parstriangularis_3	rh.superiorfrontal_30	lh.superiorfrontal_37	lh.middletemporal_3
584 rh.lateraloccipital_11	lh.precentral_17	rh.lingual_14	rh.supramarginal_14	rh.pericalcarine_1	lh.insula_3	rh.inferiortemporal_12
585 rh.fusiform_8	lh.inferioparietal_11	lh.cuneus_3	lh.precentral_17	lh.superiorfrontal_8	rh.paracentral_6	lh.bankssts_6
586 lh.superiorfrontal_6	rh.inferioparietal_26	rh.fusiform_13	lh.inferioparietal_19	rh.lingual_17	rh.precentral_36	lh.inferiortemporal_12
587 rh.transversetemporal_2	rh.superiortemporal_16	rh.superioparietal_15	rh.insula_7	rh.superiorfrontal_5	lh.middletemporal_12	lh.lateralorbitofrontal_10
588 lh.rostralmiddlefrontal_24	rh.precentral_18	rh.fusiform_5	rh.precentral_25	rh.precentral_4	lh.postcentral_13	lh.precentral_10
589 lh.inferiortemporal_4	lh.precuneus_1	rh.superiorfrontal_9	lh.superiorfrontal_14	lh.middletemporal_7	lh.superiorfrontal_27	lh.superiorfrontal_33
590 lh.middletemporal_16	rh.precentral_25	lh.superiorfrontal_15	rh.supramarginal_4	lh.fusiform_17	rh.precentral_11	lh.middletemporal_7
591 rh.superiorfrontal_19	rh.rostralanteriorcingulate_3	rh.precentral_35	rh.inferioparietal_11	lh.rostralmiddlefrontal_24	lh.superiorfrontal_26	rh.superiorfrontal_40
592 rh.pericalcarine_5	rh.rostralmiddlefrontal_7	lh.middletemporal_14	rh.pericalcarine_6	rh.lateraloccipital_11	lh.posteriorcingulate_4	rh.superioparietal_20
593 rh.superiorfrontal_33	rh.superioparietal_28	lh.precuneus_21	lh.postcentral_12	lh.lingual_12	lh.parsorbitalis_2	lh.supramarginal_12
594 rh.rostralanteriorcingulate_2	rh.supramarginal_20	lh.insula_11	Left-Amygdala	rh.precentral_6	rh.superioparietal_23	lh.precuneus_14
595 lh.supramarginal_8	lh.lingual_4	lh.superioparietal_22	lh.precentral_20	rh.fusiform_4	lh.parsorbitalis_3	lh.precentral_35
596 lh.pericalcarine_3	lh.parstriangularis_6	lh.precuneus_5	rh.superiorfrontal_9	rh.fusiform_9	rh.precentral_32	rh.lateraloccipital_11

597 lh.inferiortemporal_10	lh.superioparietal_21	lh.postcentral_8	lh.inferioparietal_8	lh.fusiform_8	rh.superiorfrontal_17	rh.temporalpole_3
598 rh.superioparietal_29	rh.superiorfrontal_32	lh.bankssts_3	rh.inferiortemporal_6	lh.lingual_6	lh.lateralorbitofrontal_6	lh.postcentral_8
599 rh.superioparietal_6	rh.inferiortemporal_6	rh.cuneus_1	rh.postcentral_25	lh.superioparietal_8	lh.supramarginal_9	lh.superiortemporal_18
600 rh.superiorfrontal_30	lh.precentral_10	lh.cuneus_5	lh.lateraloccipital_15	lh.superiorfrontal_11	rh.inferiortemporal_14	lh.postcentral_23
601 rh.pericalcarine_2	lh.precentral_2	lh.rostralmiddlefrontal_6	lh.precuneus_5	rh.lingual_7	rh.lateraloccipital_21	lh.superioparietal_1
602 rh.lingual_1	lh.precentral_22	lh.paracentral_8	lh.fusiform_4	lh.superiorfrontal_36	rh.supramarginal_3	rh.lateraloccipital_2
603 lh.superioparietal_7	rh.superiorfrontal_12	lh.superioparietal_19	rh.lateraloccipital_21	lh.rostralmiddlefrontal_14	rh.medialorbitofrontal_3	rh.postcentral_3
604 lh.lingual_9	rh.rostralmiddlefrontal_16	rh.inferiortemporal_14	rh.inferioparietal_7	rh.insula_12	lh.parsopercularis_5	rh.inferiortemporal_15
605 lh.inferiortemporal_1	lh.precentral_31	lh.postcentral_14	rh.superioparietal_12	rh.superioparietal_7	lh.precentral_2	rh.postcentral_13
606 rh.paracentral_6	lh.insula_7	rh.cuneus_3	rh.cuneus_4	rh.precentral_31	lh.postcentral_25	lh.inferiortemporal_16
607 lh.postcentral_26	lh.superiorfrontal_14	lh.fusiform_1	rh.precentral_2	rh.lateraloccipital_15	rh.superiorfrontal_34	lh.superiorfrontal_18
608 lh.fusiform_15	lh.middletemporal_13	rh.parahippocampal_3	lh.inferioparietal_11	lh.superiorfrontal_4	rh.superiorfrontal_31	rh.medialorbitofrontal_11
609 rh.precentral_6	lh.rostralmiddlefrontal_17	lh.lingual_9	lh.superiortemporal_9	rh.lateraloccipital_23	rh.superiorfrontal_40	lh.precentral_22
610 lh.lateraloccipital_16	rh.parsopercularis_1	lh.rostralanteriorcingulate_3	rh.caudalanteriorcingulate_6	rh.inferiortemporal_6	rh.insula_3	lh.superiorfrontal_18
611 lh.lingual_14	lh.rostralanteriorcingulate_2	lh.precentral_24	lh.inferiortemporal_4	rh.superiortemporal_6	rh.superiorfrontal_13	rh.precentral_4
612 rh.superiorfrontal_6	lh.cuneus_5	lh.superioparietal_9	lh.precuneus_1	lh.inferiortemporal_10	rh.precentral_28	rh.lingual_6
613 rh.supramarginal_18	rh.bankssts_6	lh.parstriangularis_6	rh.superioparietal_28	rh.fusiform_12	rh.supramarginal_20	rh.superiortemporal_21
614 lh.parsopercularis_2	lh.superioparietal_5	rh.inferioparietal_26	rh.insula_14	rh.postcentral_3	rh.temporalpole_3	rh.medialorbitofrontal_10
615 lh.superiorfrontal_10	lh.rostralmiddlefrontal_6	rh.postcentral_25	lh.middletemporal_13	lh.fusiform_3	rh.middletemporal_12	rh.postcentral_5
616 lh.superiorfrontal_1	lh.superiorfrontal_12	rh.supramarginal_20	lh.superioparietal_28	rh.superiorfrontal_38	rh.supramarginal_5	rh.inferiortemporal_9
617 lh.precentral_7	lh.precuneus_19	lh.postcentral_2	rh.cuneus_3	lh.superiorfrontal_15	lh.superiorfrontal_43	lh.parstriangularis_1
618 lh.inferioparietal_14	rh.inferiortemporal_4	rh.precentral_10	lh.superioparietal_5	lh.precentral_10	lh.parstriangularis_3	lh.lateraloccipital_21
619 lh.fusiform_9	rh.lateralorbitofrontal_6	lh.supramarginal_20	rh.superiortemporal_16	lh.middletemporal_16	rh.precentral_18	rh.precentral_2
620 lh.parahippocampal_2	lh.precentral_24	rh.inferioparietal_7	rh.posteriorcingulate_4	lh.lateraloccipital_16	rh.superiorfrontal_35	lh.lingual_7
621 rh.postcentral_3	lh.superioparietal_9	rh.paracentral_9	lh.precentral_7	lh.superioparietal_14	rh.precentral_35	lh.lateraloccipital_3
622 rh.fusiform_3	lh.superiorfrontal_32	lh.superioparietal_21	lh.rostralmiddlefrontal_24	rh.lingual_3	rh.posteriorcingulate_5	lh.middletemporal_1
623 lh.rostralmiddlefrontal_3	lh.rostralmiddlefrontal_24	lh.rostralmiddlefrontal_24	rh.rostralmiddlefrontal_7	rh.precentral_18	lh.inferiortemporal_7	rh.precentral_28
624 lh.fusiform_2	lh.superiorfrontal_12	lh.superioparietal_12	rh.superiorfrontal_29	rh.precentral_18	lh.fusiform_5	lh.inferiortemporal_3
625 rh.rostralmiddlefrontal_13	rh.cuneus_7	lh.middletemporal_10	rh.precuneus_21	lh.postcentral_2	rh.posteriorcingulate_7	lh.supramarginal_20
626 rh.postcentral_16	rh.lingual_14	lh.fusiform_2	lh.precentral_24	rh.transversetemporal_2	rh.inferioparietal_10	rh.precuneus_21
627 rh.pericalcarine_7	rh.superiorfrontal_20	rh.precentral_6	lh.superioparietal_21	rh.superiorfrontal_21	rh.superiorfrontal_10	rh.lingual_5
628 lh.superiorfrontal_19	lh.pericalcarine_7	lh.precuneus_1	rh.inferioparietal_26	lh.superioparietal_7	lh.medialorbitofrontal_8	rh.transversetemporal_3
629 rh.lingual_4	lh.caudalmiddlefrontal_12	rh.rostralmiddlefrontal_16	rh.paracentral_1	lh.fusiform_12	rh.postcentral_9	rh.lateraloccipital_19
630 lh.superiorfrontal_14	lh.precentral_7	rh.pericalcarine_8	lh.superioparietal_14	lh.parahippocampal_2	rh.superiortemporal_1	lh.precentral_27
631 lh.lingual_10	lh.middletemporal_3	lh.precentral_17	lh.precuneus_19	lh.fusiform_15	rh.supramarginal_9	rh.inferiortemporal_3
632 rh.cuneus_8	lh.lateraloccipital_14	lh.postcentral_12	rh.bankssts_5	lh.pericalcarine_5	lh.inferiortemporal_16	rh.middletemporal_19
633 rh.lateraloccipital_8	rh.superiorfrontal_7	rh.parstriangularis_3	lh.insula_12	rh.lateraloccipital_19	lh.superiorfrontal_25	rh.parahippocampal_3
634 rh.lateraloccipital_19	lh.superioparietal_28	rh.lingual_2	lh.superioparietal_12	lh.superiorfrontal_34	lh.lateraloccipital_11	rh.rostralmiddlefrontal_1
635 rh.insula_2	rh.lateraloccipital_13	lh.rostralmiddlefrontal_7	rh.supramarginal_20	rh.inferiortemporal_12	lh.insula_16	lh.precentral_34
636 lh.lateralorbitofrontal_8	rh.parsopercularis_4	lh.superiorfrontal_39	lh.bankssts_5	lh.superioparietal_5	rh.lingual_10	lh.fusiform_11
637 lh.precentral_10	rh.bankssts_4	rh.paracentral_1	lh.superioparietal_29	rh.supramarginal_18	lh.superiorfrontal_31	rh.precuneus_2
638 lh.postcentral_2	lh.supramarginal_11	rh.precuneus_15	rh.rostralanteriorcingulate_3	lh.precentral_2	lh.supramarginal_20	rh.paracentral_1
639 lh.pericalcarine_4	lh.fusiform_4	lh.superiorfrontal_12	rh.bankssts_6	lh.insula_3	lh.rostralmiddlefrontal_17	rh.precentral_17
640 rh.superiorfrontal_5	lh.supramarginal_20	rh.precuneus_21	lh.fusiform_2	lh.postcentral_26	lh.superiorfrontal_39	rh.superioparietal_21
641 rh.inferiortemporal_7	lh.paracentral_8	rh.pericalcarine_6	rh.precentral_1	lh.inferiortemporal_1	rh.postcentral_19	lh.rostralmiddlefrontal_18
642 lh.superioparietal_8	rh.superioparietal_17	lh.middletemporal_13	lh.parstriangularis_6	lh.inferiortemporal_4	lh.bankssts_2	rh.superiorfrontal_20

643 lh.superiorparietal_23	rh.precentral_6	lh.lingual_12	rh.precentral_10	lh.rostralmiddlefrontal_18	lh.posteriorcingulate_3	rh.superiortemporal_16
644 rh.superiorfrontal_38	lh.fusiform_3	lh.superiorparietal_14	lh.cuneus_7	rh.inferiortemporal_10	rh.fusiform_10	lh.lateraloccipital_16
645 rh.postcentral_1	rh.precentral_2	rh.bankssts_6	rh.precentral_6	rh.pericalcarine_2	rh.pericalcarine_4	rh.parsorbitalis_3
646 rh.inferiortemporal_10	lh.fusiform_2	lh.parahippocampal_2	rh.insula_9	lh.superiorfrontal_9	lh.supramarginal_5	lh.superiorfrontal_12
647 rh.superiortemporal_25	rh.rostralmiddlefrontal_15	rh.precentral_2	rh.parsopercularis_1	rh.parstriangularis_4	rh.fusiform_1	rh.inferiortemporal_10
648 lh.rostralmiddlefrontal_18	lh.fusiform_8	lh.precentral_7	lh.supramarginal_12	lh.superiorfrontal_18	lh.insula_6	rh.superiorfrontal_36
649 lh.lateraloccipital_4	rh.lateraloccipital_12	lh.lingual_3	lh.middletemporal_3	rh.fusiform_8	lh.superiortemporal_2	lh.lingual_15
650 lh.lateraloccipital_11	lh.supramarginal_8	lh.inferiorparietal_14	lh.rostralmiddlefrontal_17	lh.rostralmiddlefrontal_8	lh.lateraloccipital_18	lh.postcentral_28
651 lh.transversetemporal_1	rh.fusiform_6	rh.parsopercularis_4	lh.rostralmiddlefrontal_6	lh.precentral_22	lh.inferiorparietal_19	rh.rostralmiddlefrontal_5
652 rh.lingual_12	lh.superiorparietal_14	lh.insula_6	lh.superiorfrontal_32	lh.cuneus_6	rh.lingual_12	rh.precuneus_12
653 lh.superiorfrontal_36	rh.pericalcarine_8	rh.supramarginal_2	lh.supramarginal_11	rh.precuneus_17	rh.superiorfrontal_7	lh.inferiortemporal_10
654 lh.pericalcarine_2	rh.postcentral_5	rh.superiorparietal_17	lh.supramarginal_8	lh.superiorfrontal_16	rh.precentral_3	lh.parahippocampal_2
655 rh.precentral_18	lh.superiortemporal_20	rh.precuneus_17	lh.insula_7	rh.superiorparietal_6	lh.supramarginal_17	lh.postcentral_15
656 rh.superiorparietal_23	rh.superiorfrontal_9	rh.superiortemporal_20	lh.superiorparietal_7	rh.pericalcarine_4	rh.pericalcarine_4	lh.lateraloccipital_22
657 rh.lateraloccipital_4	lh.lingual_12	lh.caudalmiddlefrontal_12	rh.rostralmiddlefrontal_16	lh.rostralmiddlefrontal_12	rh.cuneus_1	lh.lingual_17
658 rh.inferiortemporal_12	lh.lateraloccipital_15	lh.parsopercularis_10	lh.caudalmiddlefrontal_12	lh.insula_6	rh.precentral_26	rh.middletemporal_4
659 lh.lateralorbitofrontal_5	lh.inferiortemporal_10	rh.superiorparietal_7	lh.fusiform_3	lh.lateraloccipital_8	lh.bankssts_3	lh.precuneus_18
660 rh.superiorfrontal_21	rh.parsopercularis_8	rh.bankssts_5	rh.precentral_17	rh.lateraloccipital_4	lh.precentral_32	rh.supramarginal_2
661 rh.precentral_31	rh.caudalmiddlefrontal_2	rh.parsopercularis_1	lh.superiorfrontal_39	rh.superiorfrontal_1	lh.supramarginal_11	rh.fusiform_13
662 rh.superiorparietal_7	lh.postcentral_3	Left-Accumbens-area	lh.inferiortemporal_10	rh.superiorfrontal_1	rh.superiorparietal_19	rh.lateralorbitofrontal_3
663 rh.lateraloccipital_18	lh.middletemporal_7	lh.superiorfrontal_32	lh.lateraloccipital_12	rh.lateraloccipital_8	lh.precentral_5	rh.postcentral_19
664 lh.superiorparietal_28	rh.superiorfrontal_3	lh.superiorparietal_5	lh.superiorparietal_27	rh.superiorfrontal_8	lh.superiorparietal_26	lh.superiortemporal_20
665 lh.lateraloccipital_8	rh.postcentral_25	rh.postcentral_5	rh.superiorparietal_20	lh.lateraloccipital_11	rh.entorhinal_1	rh.fusiform_9
666 lh.fusiform_1	lh.rostralanteriorcingulate_3	rh.superiortemporal_16	lh.rostralanteriorcingulate_2	rh.fusiform_3	lh.superiorparietal_8	rh.superiortemporal_11
667 lh.superiortemporal_8	rh.supramarginal_2	lh.superiorparietal_28	lh.superiorparietal_17	rh.medialorbitofrontal_10	lh.lateraloccipital_2	rh.fusiform_2
668 lh.lingual_5	lh.postcentral_25	lh.precuneus_19	lh.lateraloccipital_10	rh.superiorparietal_23	lh.superiorfrontal_3	lh.lingual_2
669 rh.postcentral_18	rh.superiorparietal_7	rh.precentral_31	lh.fusiform_8	rh.supramarginal_15	lh.superiortemporal_20	lh.lateraloccipital_9
670 lh.medialorbitofrontal_4	rh.postcentral_20	lh.inferiortemporal_4	rh.parsopercularis_4	lh.lateraloccipital_9	rh.superiortemporal_20	rh.superiortemporal_10
671 lh.superiorfrontal_18	rh.supramarginal_16	rh.superiorparietal_20	lh.insula_15	lh.fusiform_2	lh.inferiortemporal_6	lh.inferiortemporal_6
672 lh.superiorfrontal_15	rh.lateraloccipital_21	lh.transversetemporal_3	lh.middletemporal_7	rh.postcentral_18	rh.entorhinal_2	lh.lateraloccipital_7
673 lh.precentral_22	rh.cuneus_3	lh.fusiform_8	rh.lateralorbitofrontal_6	lh.lateraloccipital_4	lh.postcentral_9	lh.fusiform_15
674 lh.parahippocampal_4	rh.postcentral_7	lh.superiorparietal_8	lh.precentral_34	rh.postcentral_16	rh.temporalpole_1	rh.lateraloccipital_22
675 lh.superiorfrontal_34	lh.lateralorbitofrontal_10	rh.parsopercularis_8	lh.parahippocampal_2	rh.postcentral_23	rh.postcentral_3	rh.temporalpole_1
676 lh.lingual_8	lh.parahippocampal_2	lh.superiorparietal_7	rh.superiortemporal_12	lh.pericalcarine_3	lh.insula_9	rh.fusiform_4
677 lh.rostralmiddlefrontal_16	lh.rostralmiddlefrontal_7	rh.cuneus_4	lh.postcentral_11	rh.lingual_2	rh.lateraloccipital_16	rh.lateraloccipital_15
678 lh.superiorparietal_14	lh.superiortemporal_25	rh.rostralmiddlefrontal_7	lh.superiorfrontal_3	lh.rostralmiddlefrontal_16	rh.fusiform_15	rh.supramarginal_18
679 lh.lateraloccipital_9	rh.precuneus_22	lh.middletemporal_3	rh.bankssts_4	rh.inferiortemporal_7	rh.superiorparietal_1	lh.superiorparietal_7
680 rh.middletemporal_8	rh.parahippocampal_3	rh.rostralmiddlefrontal_11	lh.precentral_1	lh.medialorbitofrontal_5	rh.caudalmiddlefrontal_3	lh.fusiform_13
681 rh.superiortemporal_24	rh.pericalcarine_6	rh.rostralanteriorcingulate_2	lh.lateraloccipital_1	rh.lingual_4	rh.posteriorcingulate_8	rh.fusiform_14
682 lh.insula_9	rh.cuneus_4	lh.supramarginal_11	rh.lingual_8	rh.superiortemporal_25	rh.postcentral_12	lh.lateraloccipital_8
683 rh.postcentral_12	lh.postcentral_2	rh.fusiform_6	lh.lingual_13	lh.insula_9	rh.superiorfrontal_9	lh.transversetemporal_2
684 rh.precuneus_17	rh.superiorparietal_6	rh.superiorparietal_27	lh.postcentral_25	rh.rostralmiddlefrontal_11	lh.pericalcarine_5	rh.inferiortemporal_6
685 rh.fusiform_5	lh.lingual_3	Right-Accumbens-area	lh.postcentral_2	lh.lingual_14	Left-Amygdala	rh.fusiform_15
686 lh.lateralorbitofrontal_1	lh.inferiorparietal_14	rh.supramarginal_16	rh.caudalmiddlefrontal_2	lh.rostralmiddlefrontal_6	lh.postcentral_10	lh.superiortemporal_9
687 lh.rostralmiddlefrontal_12	rh.middletemporal_13	lh.postcentral_26	rh.rostralmiddlefrontal_15	lh.rostralmiddlefrontal_1	lh.insula_10	rh.precentral_1
688 rh.medialorbitofrontal_10	rh.superiorparietal_29	rh.inferiortemporal_6	rh.supramarginal_2	lh.fusiform_9	lh.precentral_10	rh.bankssts_4

689 lh.superiorfrontal_4	rh.precuneus_12	rh.lateraloccipital_13	lh.lingual_12	lh.superiorparietal_23	lh.precentral_22	lh.insula_9
690 lh.postcentral_17	lh.superiorparietal_8	rh.superiorfrontal_7	lh.supramarginal_20	lh.transverse temporal_1	lh.precuneus_14	rh.lingual_15
691 lh.lateraloccipital_19	lh.superiorparietal_26	rh.rostral anteriorcingulate_1	lh.inferiorparietal_14	lh.paracentral_2	rh.precentral_17	lh.superior temporal_14
692 rh.postcentral_4	lh.pars opercularis_10	rh.superiorparietal_28	lh.rostral middle frontal_7	lh.superiorfrontal_5	rh.superiorfrontal_26	rh.lateraloccipital_4
693 lh.superior temporal_26	lh.pars opercularis_5	rh.superior temporal_12	rh.superiorparietal_6	rh.lateraloccipital_18	rh.supramarginal_4	lh.medial orbitofrontal_7
694 rh.lingual_10	rh.precentral_1	rh.caudal middle frontal_2	lh.postcentral_3	rh.superiorfrontal_15	lh.lateraloccipital_16	rh.superiorfrontal_7
695 lh.lingual_1	lh.superiorparietal_29	lh.pars opercularis_5	lh.supramarginal_14	rh.pericalcarine_7	rh.precentral_34	rh.pars orbitalis_1
696 lh.inferior temporal_8	rh.precentral_4	rh.rostral middle frontal_15	rh.paracentral_9	rh.middle temporal_8	lh.supramarginal_7	lh.middle temporal_16
697 rh.parstriangularis_4	rh.superiorparietal_20	lh.precentral_9	lh.superiorparietal_8	lh.pericalcarine_2	lh.precentral_31	rh.superiorfrontal_12
698 rh.superiorfrontal_1	rh.paracentral_1	lh.lingual_13	rh.superior temporal_19	rh.superior temporal_24	lh.lateraloccipital_17	lh.rostral middle frontal_16
699 rh.supramarginal_15	rh.insula_3	lh.lateraloccipital_15	lh.rostral middle frontal_16	lh.lingual_10	lh.bankssts_4	rh.parahippocampal_1
700 rh.superiorparietal_1	lh.rostral middle frontal_16	lh.rostral anteriorcingulate_4	rh.superiorparietal_29	lh.postcentral_15	lh.cuneus_4	lh.postcentral_24
701 rh.lateraloccipital_9	rh.inferiorparietal_5	rh.precentral_17	rh.postcentral_5	rh.lateral orbitofrontal_14	lh.postcentral_24	rh.rostral middle frontal_25
702 rh.insula_12	rh.superiorfrontal_29	rh.precentral_1	lh.rostral anteriorcingulate_3	lh.lingual_9	rh.lateraloccipital_2	rh.fusiform_17
703 lh.postcentral_29	rh.rostral anteriorcingulate_4	lh.precentral_34	lh.paracentral_2	lh.lateraloccipital_19	lh.lateraloccipital_3	rh.superiorparietal_4
704 lh.superiorparietal_9	lh.pars opercularis_3	lh.postcentral_3	rh.superiorparietal_19	rh.precentral_2	lh.superiorfrontal_40	rh.superiorparietal_3
705 lh.inferior temporal_9	rh.insula_10	rh.bankssts_4	lh.rostral middle frontal_12	rh.precentral_19	rh.pericalcarine_7	rh.rostral middle frontal_25
706 lh.postcentral_23	lh.rostral middle frontal_12	lh.inferior temporal_10	lh.superior temporal_20	rh.pericalcarine_5	rh.postcentral_18	lh.postcentral_26
707 lh.cuneus_2	rh.insula_2	rh.postcentral_20	lh.lateraloccipital_13	lh.superior temporal_8	lh.postcentral_16	lh.fusiform_6
708 rh.postcentral_10	lh.lingual_13	rh.supramarginal_8	rh.parahippocampal_3	lh.inferior temporal_9	rh.inferior temporal_3	rh.fusiform_16
709 rh.pericalcarine_4	lh.superiorparietal_7	lh.rostral middle frontal_12	rh.pars opercularis_8	lh.postcentral_24	rh.superior temporal_21	rh.parahippocampal_2
710 lh.precentral_2	lh.postcentral_26	lh.precentral_1	lh.precentral_9	lh.insula_11	rh.superior temporal_18	rh.superior temporal_12
711 lh.superiorparietal_3	lh.cuneus_7	lh.paracentral_2	lh.superior temporal_25	lh.lingual_8	lh.superiorfrontal_18	lh.transverse temporal_3
712 lh.cuneus_5	rh.precentral_17	rh.superiorparietal_19	lh.lateral orbitofrontal_10	lh.postcentral_29	rh.superior temporal_14	rh.lateraloccipital_16
713 rh.lingual_9	lh.rostral middle frontal_18	lh.superiorparietal_29	lh.precuneus_22	lh.precentral_27	lh.precentral_29	rh.paracentral_9
714 lh.postcentral_24	rh.superior temporal_25	lh.postcentral_25	rh.middle temporal_13	rh.superiorfrontal_9	rh.inferior temporal_1	rh.transverse temporal_2
715 rh.postcentral_19	rh.parstriangularis_6	lh.cuneus_7	rh.supramarginal_16	rh.lingual_12	lh.precentral_11	lh.precentral_9
716 lh.rostral middle frontal_14	lh.superiorfrontal_39	rh.lateraloccipital_12	lh.pars opercularis_10	rh.lingual_10	rh.supramarginal_16	rh.postcentral_18
717 lh.postcentral_15	lh.paracentral_2	rh.precuneus_22	rh.precentral_28	lh.parahippocampal_4	lh.precentral_14	rh.lateral orbitofrontal_1
718 rh.cuneus_6	lh.supramarginal_9	lh.rostral middle frontal_16	lh.precentral_27	rh.rostral middle frontal_25	lh.precentral_25	lh.lateral orbitofrontal_3
719 rh.rostral middle frontal_25	lh.precentral_34	lh.middle temporal_7	lh.lingual_16	rh.superiorfrontal_32	rh.paracentral_9	rh.superior temporal_1
720 lh.insula_3	rh.paracentral_9	lh.lateraloccipital_14	rh.insula_2	lh.lingual_1	rh.precentral_31	lh.supramarginal_14
721 rh.lateraloccipital_16	lh.insula_1	lh.fusiform_4	rh.precentral_4	rh.postcentral_12	lh.insula_13	rh.fusiform_12
722 lh.cuneus_4	lh.inferior temporal_1	rh.superiorfrontal_29	rh.precuneus_12	rh.superiorparietal_20	rh.postcentral_24	rh.superior temporal_6
723 lh.fusiform_4	rh.superiorparietal_19	rh.superior temporal_11	rh.postcentral_7	lh.superior temporal_26	lh.postcentral_19	lh.middle temporal_14
724 rh.superiorfrontal_8	rh.precuneus_17	lh.fusiform_3	rh.precuneus_17	lh.precuneus_14	Brain-Stem	lh.inferior temporal_1
725 rh.precentral_2	rh.rostral middle frontal_3	rh.superior temporal_25	lh.rostral middle frontal_18	lh.fusiform_1	rh.superiorfrontal_16	lh.superior temporal_7
726 lh.rostral middle frontal_8	rh.superiorparietal_27	lh.postcentral_29	rh.superior temporal_25	rh.lateraloccipital_16	lh.middle temporal_10	lh.fusiform_10
727 lh.superiorfrontal_9	rh.superiorparietal_23	lh.rostral anteriorcingulate_1	lh.superiorparietal_7	rh.lateraloccipital_9	rh.postcentral_5	rh.superiorparietal_23
728 lh.paracentral_2	lh.lateraloccipital_10	rh.lateraloccipital_21	lh.postcentral_26	lh.lateral orbitofrontal_13	lh.temporalpole_3	lh.precentral_18
729 lh.lateraloccipital_2	lh.transverse temporal_3	lh.supramarginal_9	lh.insula_17	rh.cuneus_1	rh.precentral_10	lh.parahippocampal_1
730 lh.superior temporal_11	lh.precentral_1	rh.superiorparietal_6	rh.rostral middle frontal_11	rh.postcentral_10	lh.lateraloccipital_8	rh.postcentral_1
731 lh.medial orbitofrontal_5	rh.supramarginal_18	lh.superiorfrontal_16	rh.postcentral_19	lh.lateraloccipital_2	lh.lingual_14	lh.middle temporal_4
732 lh.superiorfrontal_8	rh.transverse temporal_2	rh.precuneus_12	rh.insula_3	rh.lingual_1	rh.pericalcarine_1	lh.superiorfrontal_40
733 lh.superior temporal_4	lh.supramarginal_14	lh.precentral_31	rh.inferiorparietal_5	rh.fusiform_5	rh.precentral_4	lh.inferior temporal_9
734 rh.cuneus_5	lh.lateraloccipital_12	rh.parstriangularis_6	lh.pars opercularis_5	rh.superiorparietal_1	rh.cuneus_6	rh.superiorfrontal_39

735 lh.precentral_27	lh.precentral_27	lh.lateraloccipital_10	rh.insula_12	rh.cuneus_8	lh.lateralorbitofrontal_12	lh.lateraloccipital_2
736 lh.lateraloccipital_20	lh.lateraloccipital_1	lh.postcentral_11	lh.postcentral_29	rh.pericalcarine_4	lh.supramarginal_8	rh.postcentral_25
737 rh.lateralorbitofrontal_12	lh.middletemporal_16	lh.superiortemporal_25	lh.superioparietal_26	lh.superiorfrontal_30	lh.pericalcarine_6	lh.lateraloccipital_20
738 lh.lingual_13	rh.insula_12	rh.middletemporal_13	rh.parsopercularis_3	lh.lateraloccipital_20	rh.superiortemporal_17	lh.pericalcarine_4
739 lh.bankssts_1	lh.postcentral_29	rh.superiorfrontal_23	rh.superioparietal_23	lh.superioparietal_9	lh.precentral_9	rh.lateralorbitofrontal_2
740 lh.insula_6	Left-Accumbens-area	lh.precuneus_14	rh.lingual_13	lh.superiortemporal_4	lh.superiorfrontal_15	rh.fusiform_10
741 rh.lateraloccipital_14	rh.postcentral_19	lh.precentral_27	lh.insula_3	lh.cuneus_2	rh.bankssts_5	lh.lateraloccipital_19
742 rh.middletemporal_10	rh.fusiform_4	lh.lingual_16	lh.superiorfrontal_16	lh.inferiortemporal_8	lh.superiorfrontal_6	rh.pericalcarine_2
743 lh.superiorfrontal_11	rh.superiortemporal_12	lh.rostralmiddlefrontal_14	lh.inferiortemporal_1	lh.paracentral_8	lh.precentral_20	lh.superiortemporal_25
744 lh.superiorfrontal_5	rh.inferiortemporal_10	rh.superioparietal_29	rh.superiorfrontal_23	rh.precentral_28	lh.postcentral_6	rh.lateralorbitofrontal_5
745 rh.superiorfrontal_15	rh.superiortemporal_6	rh.rostralmiddlefrontal_3	rh.middletemporal_10	lh.bankssts_1	rh.lateraloccipital_9	lh.fusiform_8
746 rh.lateraloccipital_10	lh.precentral_9	rh.precentral_4	rh.supramarginal_18	lh.superiorfrontal_33	lh.pericalcarine_4	lh.temporalpole_3
747 rh.superioparietal_19	Right-Accumbens-area	lh.insula_9	rh.parstriangularis_6	rh.paracentral_9	rh.superiorfrontal_36	lh.lateraloccipital_11
748 rh.pericalcarine_3	rh.precentral_28	lh.supramarginal_14	lh.inferiortemporal_9	rh.lingual_9	lh.superiorfrontal_33	lh.fusiform_5
749 rh.lateralorbitofrontal_14	rh.lingual_17	rh.lingual_17	rh.middletemporal_8	lh.superioparietal_3	rh.superiortemporal_10	lh.fusiform_7
750 rh.paracentral_9	lh.parsopercularis_2	rh.lingual_8	rh.inferiortemporal_10	lh.superiortemporal_11	rh.postcentral_11	rh.middletemporal_8
751 rh.superioparietal_20	rh.middletemporal_8	rh.transverse temporal_2	lh.insula_10	lh.lateraloccipital_14	lh.parstriangularis_7	lh.postcentral_29
752 rh.parahippocampal_6	rh.rostralmiddlefrontal_11	rh.superioparietal_23	lh.supramarginal_9	lh.postcentral_17	rh.parstriangularis_1	lh.superiortemporal_4
753 lh.precuneus_14	lh.insula_3	rh.inferioparietal_5	rh.transverse temporal_2	lh.superiorfrontal_39	rh.supramarginal_7	rh.lateraloccipital_8
754 rh.rostralmiddlefrontal_11	lh.lateraloccipital_13	lh.parsopercularis_2	rh.rostralmiddlefrontal_3	rh.cuneus_6	lh.lingual_11	rh.superiortemporal_24
755 rh.rostralmiddlefrontal_6	lh.postcentral_11	lh.lateralorbitofrontal_2	lh.precuneus_14	rh.postcentral_4	lh.postcentral_3	lh.bankssts_1
756 rh.cuneus_3	lh.inferiortemporal_9	rh.lateralorbitofrontal_14	lh.superioparietal_3	rh.superiorfrontal_7	rh.supramarginal_1	rh.postcentral_20
757 rh.lateralorbitofrontal_5	rh.superiortemporal_11	rh.parsopercularis_3	rh.rostral anterior cingulate_4	lh.precentral_30	lh.lingual_10	rh.precuneus_22
758 lh.superioparietal_17	lh.precentral_14	rh.lateralorbitofrontal_12	lh.insula_1	rh.lateralorbitofrontal_5	lh.lingual_1	lh.fusiform_3
759 lh.superiortemporal_3	lh.superioparietal_3	rh.superiorfrontal_3	lh.middletemporal_16	rh.superiorfrontal_36	lh.precentral_1	rh.lingual_17
760 rh.rostralmiddlefrontal_9	rh.middletemporal_10	rh.lateralorbitofrontal_5	rh.supramarginal_15	lh.cuneus_5	rh.superioparietal_27	lh.postcentral_3
761 rh.superiorfrontal_32	rh.supramarginal_15	lh.superiortemporal_8	rh.superiortemporal_2	rh.lateraloccipital_10	lh.postcentral_5	rh.lateraloccipital_23
762 rh.superiorfrontal_9	rh.postcentral_18	lh.superioparietal_3	rh.superiorfrontal_39	lh.precentral_34	rh.parstriangularis_5	rh.inferiortemporal_4
763 rh.fusiform_7	rh.inferiortemporal_12	lh.postcentral_18	rh.superiortemporal_7	rh.middletemporal_10	rh.bankssts_6	rh.medialorbitofrontal_6
764 lh.lateraloccipital_15	rh.rostral anterior cingulate_1	lh.postcentral_23	Left-Accumbens-area	rh.lateralorbitofrontal_3	rh.superiortemporal_5	rh.lateralorbitofrontal_17
765 rh.superiorfrontal_7	lh.superiorfrontal_16	lh.lateraloccipital_12	lh.transverse temporal_3	rh.superiorfrontal_4	rh.supramarginal_14	rh.lateraloccipital_14
766 lh.superiorfrontal_16	lh.lingual_16	lh.insula_13	lh.parsopercularis_2	lh.insula_17	rh.superiortemporal_23	lh.superiortemporal_2
767 lh.postcentral_22	lh.rostral anterior cingulate_4	rh.postcentral_19	rh.fusiform_4	rh.lateralorbitofrontal_12	lh.superiortemporal_14	lh.superiortemporal_18
768 lh.lingual_11	lh.insula_17	rh.postcentral_7	rh.superiortemporal_6	lh.cuneus_4	lh.lateraloccipital_4	rh.lateraloccipital_13
769 rh.precentral_28	lh.precuneus_14	lh.rostralmiddlefrontal_18	lh.rostralmiddlefrontal_14	rh.cuneus_5	rh.superiortemporal_24	rh.inferiortemporal_2
770 rh.lateraloccipital_13	rh.lingual_8	lh.inferiortemporal_1	lh.insula_11	lh.parstriangularis_1	rh.cuneus_8	rh.superiortemporal_8
771 lh.pericalcarine_1	lh.rostralmiddlefrontal_14	rh.postcentral_1	rh.postcentral_18	rh.superiorfrontal_23	lh.supramarginal_1	rh.lingual_10
772 rh.transverse temporal_1	rh.postcentral_1	lh.lateralorbitofrontal_1	rh.lateraloccipital_20	rh.lateralorbitofrontal_1	rh.parahippocampal_2	lh.lateraloccipital_4
773 lh.superiorfrontal_30	lh.fusiform_9	rh.middletemporal_10	rh.inferiortemporal_12	lh.lingual_5	rh.precentral_21	lh.entorhinal_3
774 rh.lateralorbitofrontal_1	rh.parstriangularis_4	rh.parahippocampal_1	rh.superiorfrontal_10	rh.precentral_17	lh.inferiortemporal_5	lh.pericalcarine_6
775 rh.postcentral_25	lh.superiortemporal_8	rh.rostralmiddlefrontal_6	Right-Accumbens-area	rh.superioparietal_19	rh.precentral_5	lh.lingual_1
776 rh.lateralorbitofrontal_3	rh.lingual_13	rh.lingual_13	lh.precentral_30	rh.postcentral_25	rh.middletemporal_15	rh.rostralmiddlefrontal_12
777 rh.cuneus_7	rh.parstriangularis_7	rh.superiorfrontal_39	rh.parstriangularis_4	rh.superiorfrontal_20	rh.fusiform_3	rh.postcentral_10
778 lh.superiorfrontal_33	rh.superiorfrontal_23	lh.transverse temporal_1	rh.rostralmiddlefrontal_6	rh.lateraloccipital_13	lh.postcentral_22	rh.fusiform_3
779 lh.postcentral_16	lh.inferiortemporal_8	lh.precentral_30	lh.lateraloccipital_6	lh.precentral_9	lh.superiortemporal_8	lh.precentral_31
780 rh.superiorfrontal_36	lh.insula_11	lh.medialorbitofrontal_5	rh.lingual_17	lh.superiorfrontal_12	lh.postcentral_26	rh.lateraloccipital_9

781 rh.pericalcarine_8	rh.rostralmiddlefrontal_6	rh.superiortemporal_24	lh.superiortemporal_19	rh.precentral_1	rh.postcentral_15	rh.fusiform_8
782 rh.lateraloccipital_12	rh.inferiortemporal_7	lh.lateraloccipital_13	rh.postcentral_1	rh.rostralmiddlefrontal_9	rh.lingual_13	rh.lateraloccipital_18
783 rh.fusiform_6	lh.parahippocampal_4	lh.lateralorbitofrontal_8	lh.precentral_14	rh.supramarginal_14	rh.inferiortemporal_11	lh.precentral_1
784 lh.precentral_9	lh.rostralanteriorcingulate_1	rh.superiortemporal_6	lh.precentral_31	lh.fusiform_4	rh.middletemporal_14	rh.inferiortemporal_7
785 lh.cuneus_3	lh.precentral_30	lh.lateraloccipital_1	rh.fusiform_11	lh.lateraloccipital_15	rh.cuneus_5	rh.superiortemporal_9
786 rh.postcentral_17	rh.rostralanteriorcingulate_2	lh.fusiform_9	rh.superiortemporal_11	lh.superiorparietal_17	lh.lateraloccipital_6	lh.superiortemporal_26
787 lh.precentral_34	lh.postcentral_23	rh.middletemporal_8	lh.parahippocampal_1	lh.precentral_18	rh.fusiform_14	rh.lateraloccipital_12
788 lh.supramarginal_14	rh.postcentral_12	lh.lateralorbitofrontal_4	lh.precentral_18	lh.lingual_11	lh.lateraloccipital_20	rh.lateraloccipital_21
789 lh.rostralmiddlefrontal_1	rh.superiortemporal_24	lh.parahippocampal_1	rh.rostralanteriorcingulate_1	rh.superiorfrontal_12	rh.inferiortemporal_15	rh.superiorfrontal_10
790 lh.precentral_18	rh.lateraloccipital_20	rh.supramarginal_15	lh.superiortemporal_8	rh.lateraloccipital_12	lh.inferiortemporal_11	rh.superiortemporal_25
791 lh.fusiform_14	lh.transversetemporal_1	lh.superiorfrontal_8	lh.fusiform_9	lh.postcentral_28	rh.supramarginal_15	lh.lingual_12
792 rh.precentral_1	lh.superiorfrontal_8	rh.supramarginal_18	lh.inferiortemporal_8	lh.pericalcarine_1	rh.inferiortemporal_7	rh.postcentral_28
793 rh.postcentral_22	lh.rostralmiddlefrontal_3	rh.superiorparietal_26	rh.superiorfrontal_4	rh.paracentral_1	rh.supramarginal_18	lh.middletemporal_2
794 lh.postcentral_1	rh.postcentral_16	rh.postcentral_12	lh.rostralanteriorcingulate_4	rh.parahippocampal_6	lh.middletemporal_4	rh.superiorparietal_6
795 lh.insula_11	lh.precentral_18	lh.lateralorbitofrontal_7	lh.postcentral_20	rh.superiorfrontal_10	lh.supramarginal_13	lh.fusiform_2
796 rh.precentral_17	rh.lateralorbitofrontal_12	lh.parahippocampal_4	lh.parahippocampal_4	rh.fusiform_7	lh.transversetemporal_2	rh.pericalcarine_4
797 rh.lateraloccipital_21	lh.lateralorbitofrontal_8	rh.superiortemporal_19	lh.postcentral_23	rh.transversetemporal_1	lh.cuneus_1	rh.superiortemporal_11
798 lh.precentral_30	rh.superiorfrontal_10	rh.superiorfrontal_10	lh.superiorfrontal_8	rh.parahippocampal_1	rh.postcentral_13	rh.superiortemporal_20
799 lh.paracentral_8	rh.superiorfrontal_4	rh.inferiortemporal_10	rh.lateralorbitofrontal_12	lh.lateraloccipital_21	lh.postcentral_12	lh.lingual_6
800 lh.superiorparietal_29	lh.medialorbitofrontal_4	rh.superiorparietal_4	rh.inferiortemporal_7	lh.postcentral_16	lh.fusiform_15	rh.middletemporal_10
801 rh.superiorfrontal_20	rh.rostralmiddlefrontal_25	lh.inferiortemporal_8	rh.postcentral_12	lh.superiorfrontal_40	rh.inferiortemporal_2	lh.superiorparietal_5
802 rh.superiorfrontal_12	rh.rostralmiddlefrontal_9	lh.inferiortemporal_9	rh.rostralmiddlefrontal_9	rh.cuneus_3	lh.superiorfrontal_17	lh.lingual_11
803 lh.parstriangularis_1	rh.superiorfrontal_39	rh.precentral_28	rh.transversetemporal_1	rh.postcentral_20	lh.superiorfrontal_5	lh.parstriangularis_5
804 lh.superiorfrontal_12	lh.insula_6	lh.middletemporal_16	rh.cuneus_2	rh.pericalcarine_3	lh.bankssts_6	rh.rostralmiddlefrontal_9
805 rh.postcentral_15	rh.transversetemporal_1	rh.parstriangularis_4	rh.superiortemporal_15	rh.superiorparietal_4	lh.parstriangularis_5	rh.postcentral_16
806 lh.lateraloccipital_14	lh.lateraloccipital_6	rh.superiortemporal_9	rh.superiortemporal_24	lh.precentral_1	rh.postcentral_6	rh.lingual_4
807 lh.precentral_1	rh.medialorbitofrontal_10	rh.medialorbitofrontal_10	rh.parstriangularis_7	rh.pericalcarine_8	rh.precentral_6	rh.postcentral_12
808 lh.pericalcarine_7	rh.fusiform_7	rh.fusiform_4	lh.insula_13	rh.rostralmiddlefrontal_1	lh.fusiform_5	lh.pericalcarine_5
809 rh.postcentral_23	lh.superiortemporal_19	lh.precentral_18	lh.superiortemporal_17	rh.middletemporal_2	lh.precentral_27	rh.frontalpole_2
810 lh.superiorfrontal_39	rh.lateralorbitofrontal_14	rh.superiorfrontal_4	rh.fusiform_7	lh.lingual_13	lh.postcentral_1	lh.superiorfrontal_29
811 rh.rostralmiddlefrontal_17	rh.fusiform_11	rh.superiortemporal_7	lh.insula_6	rh.superiortemporal_12	lh.entorhinal_2	lh.lateraloccipital_15
812 rh.superiorfrontal_4	rh.postcentral_10	lh.precentral_14	rh.parahippocampal_1	lh.superiortemporal_3	lh.bankssts_2	lh.transversetemporal_1
813 rh.postcentral_20	lh.postcentral_20	rh.lateralorbitofrontal_3	rh.superiortemporal_9	rh.superiortemporal_18	lh.middletemporal_2	rh.postcentral_7
814 rh.parahippocampal_1	lh.superiortemporal_4	rh.rostralmiddlefrontal_9	rh.rostralmiddlefrontal_25	lh.cuneus_3	rh.superiorfrontal_32	rh.middletemporal_11
815 lh.superiorfrontal_40	rh.fusiform_3	rh.cuneus_2	lh.transversetemporal_1	rh.postcentral_15	lh.superiorfrontal_12	lh.pericalcarine_2
816 rh.parstriangularis_5	lh.precentral_31	rh.postcentral_17	rh.rostralanteriorcingulate_2	rh.postcentral_17	lh.fusiform_6	rh.superiorparietal_1
817 rh.cuneus_4	rh.postcentral_17	rh.postcentral_16	rh.lateralorbitofrontal_14	lh.pericalcarine_7	lh.lingual_8	rh.fusiform_17
818 rh.lingual_16	lh.insula_9	lh.superiortemporal_4	rh.superiorparietal_4	lh.lateraloccipital_13	rh.superiortemporal_12	rh.rostralmiddlefrontal_26
819 rh.lingual_11	rh.parahippocampal_1	rh.transversetemporal_1	rh.postcentral_15	rh.cuneus_7	rh.postcentral_26	rh.lateralorbitofrontal_12
820 rh.inferiortemporal_2	rh.cuneus_2	lh.postcentral_24	rh.postcentral_17	rh.lateralorbitofrontal_15	rh.fusiform_7	lh.superiortemporal_23
821 lh.postcentral_28	lh.postcentral_16	rh.parstriangularis_7	lh.rostralanteriorcingulate_1	lh.lateraloccipital_10	lh.middletemporal_1	lh.superiorparietal_19
822 lh.lateraloccipital_1	rh.postcentral_15	rh.lateralorbitofrontal_13	rh.postcentral_16	lh.lateraloccipital_14	lh.pericalcarine_3	lh.cuneus_1
823 lh.lateraloccipital_13	lh.bankssts_1	rh.inferiortemporal_7	lh.rostralmiddlefrontal_3	lh.fusiform_14	lh.fusiform_16	rh.parstriangularis_2
824 rh.paracentral_1	lh.medialorbitofrontal_5	rh.lateraloccipital_20	lh.lateralorbitofrontal_2	rh.rostralmiddlefrontal_17	rh.lingual_9	rh.medialorbitofrontal_8
825 rh.superiortemporal_18	lh.insula_13	rh.inferiortemporal_12	lh.lateralorbitofrontal_8	rh.inferiortemporal_16	rh.lateraloccipital_14	lh.lingual_8
826 lh.lateralorbitofrontal_12	lh.postcentral_24	lh.rostralmiddlefrontal_3	lh.medialorbitofrontal_4	lh.postcentral_22	rh.superiortemporal_6	lh.lateraloccipital_10

827 lh.lateraloccipital_10	lh.lateralorbitofrontal_1	lh.medialorbitofrontal_4	lh.superiortemporal_5	lh.medialorbitofrontal_7	lh.entorhinal_1	lh.lateraloccipital_13
828 lh.superiortemporal_13	lh.superiortemporal_26	lh.lateralorbitofrontal_13	lh.postcentral_16	lh.superiorparietal_29	rh.middletemporal_8	lh.superiorparietal_17
829 lh.superiortemporal_5	lh.superiorfrontal_11	lh.medialorbitofrontal_7	lh.superiortemporal_4	rh.middletemporal_19	lh.superiorparietal_23	rh.lateralorbitofrontal_16
830 lh.insula_17	rh.superiorparietal_4	rh.superiortemporal_2	rh.medialorbitofrontal_10	lh.lateraloccipital_1	rh.fusiform_4	lh.cuneus_2
831 rh.superiorparietal_4	rh.lateralorbitofrontal_5	lh.postcentral_20	rh.superiortemporal_13	rh.superiorfrontal_29	lh.inferiortemporal_1	lh.superiorparietal_9
832 rh.superiorparietal_27	rh.superiortemporal_2	lh.postcentral_4	rh.postcentral_10	rh.lateraloccipital_20	rh.precentral_1	rh.fusiform_1
833 rh.middletemporal_6	rh.postcentral_4	rh.postcentral_15	lh.parstriangularis_1	rh.superiortemporal_23	rh.precentral_2	lh.pericalcarine_1
834 lh.cuneus_7	rh.superiortemporal_15	lh.lateraloccipital_6	rh.lateraloccipital_1	rh.middletemporal_6	rh.transversetemporal_2	lh.superiortemporal_8
835 rh.pericalcarine_6	lh.parstriangularis_1	lh.superiortemporal_19	lh.bankssts_1	rh.inferiortemporal_2	rh.middletemporal_10	rh.lingual_9
836 rh.lateraloccipital_20	lh.superiortemporal_5	lh.superiortemporal_5	rh.postcentral_28	rh.fusiform_6	lh.cuneus_6	lh.inferiortemporal_11
837 lh.parstriangularis_7	rh.superiortemporal_7	lh.superiortemporal_26	rh.lateralorbitofrontal_5	rh.parstriangularis_5	rh.rostralmiddlefrontal_8	rh.superiortemporal_23
838 lh.lingual_4	rh.superiortemporal_19	lh.parstriangularis_1	rh.inferiortemporal_2	lh.postcentral_1	rh.parhippocampal_6	lh.fusiform_12
839 rh.inferiortemporal_11	lh.parhippocampal_1	rh.fusiform_11	lh.medialorbitofrontal_5	rh.parstriangularis_2	lh.superiortemporal_10	rh.cuneus_5
840 rh.superiortemporal_12	lh.postcentral_17	rh.parhippocampal_6	lh.superiorfrontal_11	lh.lingual_4	rh.superiortemporal_9	rh.pericalcarine_1
841 rh.superiortemporal_23	lh.superiortemporal_3	lh.postcentral_16	rh.lateralorbitofrontal_4	rh.lingual_16	rh.superiortemporal_15	lh.lingual_14
842 rh.middletemporal_14	rh.superiortemporal_9	rh.superiortemporal_15	lh.insula_9	lh.rostralmiddlefrontal_11	rh.lateralorbitofrontal_2	lh.parhippocampal_4
843 lh.lingual_16	rh.inferiortemporal_2	lh.superiorfrontal_11	rh.postcentral_4	lh.inferiortemporal_6	lh.supramarginal_14	rh.cuneus_6
844 rh.superiorfrontal_29	lh.lateralorbitofrontal_2	rh.rostralmiddlefrontal_25	lh.postcentral_24	lh.parstriangularis_5	rh.postcentral_7	rh.fusiform_5
845 lh.transversetemporal_4	rh.lateralorbitofrontal_3	rh.fusiform_7	lh.superiortemporal_16	rh.inferiortemporal_5	lh.parhippocampal_6	lh.rostralmiddlefrontal_11
846 rh.parstriangularis_2	lh.lateralorbitofrontal_5	lh.bankssts_1	rh.fusiform_3	lh.cuneus_7	rh.postcentral_16	rh.pericalcarine_7
847 rh.rostralmiddlefrontal_1	lh.superiortemporal_11	rh.postcentral_22	lh.superiortemporal_3	rh.cuneus_4	rh.pericalcarine_5	rh.transversetemporal_1
848 rh.superiorfrontal_23	rh.lingual_11	lh.lateralorbitofrontal_5	lh.superiortemporal_26	rh.inferiortemporal_27	lh.superiorparietal_16	lh.superiorparietal_3
849 rh.cuneus_2	rh.parstriangularis_5	rh.superiortemporal_13	rh.lingual_11	rh.inferiortemporal_11	lh.lateraloccipital_9	lh.postcentral_16
850 lh.lateralorbitofrontal_13	rh.lateralorbitofrontal_4	rh.fusiform_3	lh.lateralorbitofrontal_1	lh.inferiortemporal_15	rh.bankssts_3	rh.lateraloccipital_20
851 lh.rostralmiddlefrontal_11	lh.rostralmiddlefrontal_8	rh.postcentral_28	lh.lateralorbitofrontal_3	lh.parsorbitalis_1	lh.superiortemporal_18	lh.fusiform_9
852 lh.lateraloccipital_12	rh.lateraloccipital_1	lh.superiortemporal_11	rh.postcentral_4	lh.lateralorbitofrontal_7	lh.pericalcarine_7	lh.postcentral_11
853 lh.parhippocampal_6	rh.lateralorbitofrontal_1	lh.superiortemporal_17	rh.parstriangularis_5	lh.parstriangularis_7	rh.fusiform_9	lh.lateralorbitofrontal_7
854 rh.lingual_13	rh.inferiortemporal_11	lh.lateralorbitofrontal_6	lh.rostralmiddlefrontal_1	lh.postcentral_11	rh.superiorfrontal_29	lh.entorhinal_1
855 rh.superiorfrontal_10	rh.rostralmiddlefrontal_1	lh.postcentral_17	rh.inferiortemporal_11	lh.lateraloccipital_12	lh.superiortemporal_4	lh.inferiortemporal_8
856 lh.parstriangularis_5	lh.postcentral_4	rh.medialorbitofrontal_8	rh.inferiortemporal_1	rh.postcentral_23	lh.fusiform_2	lh.pericalcarine_3
857 lh.inferiortemporal_5	lh.fusiform_14	rh.superiortemporal_23	lh.transversetemporal_4	lh.fusiform_13	rh.middletemporal_5	lh.parhippocampal_3
858 lh.insula_13	rh.middletemporal_6	lh.parstriangularis_5	rh.parhippocampal_5	rh.postcentral_22	lh.pericalcarine_1	lh.pericalcarine_7
859 lh.medialorbitofrontal_7	rh.parhippocampal_6	rh.parhippocampal_5	rh.parstriangularis_2	rh.middletemporal_14	lh.fusiform_14	lh.lateralorbitofrontal_11
860 rh.lateralorbitofrontal_4	lh.transversetemporal_4	lh.superiortemporal_13	lh.postcentral_17	lh.insula_13	lh.superiortemporal_3	rh.pericalcarine_8
861 rh.lingual_14	rh.parstriangularis_2	rh.lateralorbitofrontal_1	rh.middletemporal_6	rh.lateralorbitofrontal_4	rh.inferiortemporal_10	rh.postcentral_15
862 lh.lateralorbitofrontal_7	lh.superiortemporal_13	rh.superiorfrontal_40	rh.inferiortemporal_5	lh.parhippocampal_6	lh.insula_1	rh.lingual_10
863 lh.postcentral_20	rh.postcentral_28	lh.superiortemporal_3	lh.lateralorbitofrontal_7	rh.superiorfrontal_39	rh.fusiform_12	lh.cuneus_6
864 lh.middletemporal_5	lh.inferiortemporal_5	lh.fusiform_14	rh.superiorfrontal_40	rh.fusiform_10	rh.transversetemporal_3	rh.rostralmiddlefrontal_17
865 lh.middletemporal_9	lh.lateralorbitofrontal_7	lh.rostralmiddlefrontal_1	rh.parstriangularis_1	lh.superiortemporal_13	lh.transversetemporal_3	rh.middletemporal_6
866 lh.postcentral_11	rh.postcentral_22	rh.rostralmiddlefrontal_1	rh.lateralorbitofrontal_13	rh.superiortemporal_9	lh.postcentral_15	lh.cuneus_4
867 lh.lateraloccipital_6	lh.postcentral_22	rh.postcentral_4	lh.superiortemporal_21	rh.middletemporal_11	lh.inferiortemporal_3	lh.lateraloccipital_1
868 lh.lingual_3	lh.parstriangularis_7	lh.inferiortemporal_5	lh.parstriangularis_5	lh.precentral_31	rh.medialorbitofrontal_1	rh.lingual_12
869 rh.fusiform_11	lh.parstriangularis_5	rh.postcentral_10	lh.superiortemporal_13	lh.lateraloccipital_6	rh.fusiform_13	lh.lingual_4
870 rh.middletemporal_19	lh.lateralorbitofrontal_13	rh.lingual_11	lh.postcentral_6	lh.lateralorbitofrontal_12	rh.lateraloccipital_12	lh.lateralorbitofrontal_15
871 rh.superiortemporal_15	rh.rostralmiddlefrontal_17	rh.lateraloccipital_1	lh.inferiortemporal_15	rh.fusiform_1	rh.inferiortemporal_12	rh.lingual_3
872 lh.lateralorbitofrontal_2	lh.rostralmiddlefrontal_1	rh.inferiortemporal_1	lh.fusiform_14	rh.medialorbitofrontal_4	lh.middletemporal_3	lh.fusiform_1

873 lh.superiortemporal_19	lh.medialorbitofrontal_7	rh.inferiortemporal_2	lh.lateralorbitofrontal_6	rh.pericalcarine_6	rh.superiortemporal_25	rh.fusiform_7
874 rh.middletemporal_2	rh.inferiortemporal_1	lh.lateralorbitofrontal_9	lh.superiortemporal_11	rh.lingual_14	rh.lateraloccipital_8	rh.middletemporal_9
875 lh.postcentral_27	rh.superiortemporal_23	rh.middletemporal_6	rh.lateralorbitofrontal_1	lh.superiortemporal_5	lh.pericalcarine_2	rh.lingual_7
876 lh.inferiortemporal_6	rh.lateralorbitofrontal_13	lh.rostralmiddlefrontal_8	lh.medialorbitofrontal_7	rh.superiorfrontal_40	lh.superiortemporal_9	lh.lateraloccipital_14
877 rh.middletemporal_9	lh.postcentral_1	rh.parstriangularis_1	rh.inferiortemporal_16	lh.inferiortemporal_5	rh.postcentral_1	rh.inferiortemporal_2
878 lh.postcentral_4	rh.parstriangularis_1	lh.medialorbitofrontal_10	lh.lateralorbitofrontal_13	lh.postcentral_20	lh.lateraloccipital_1	lh.entorhinal_2
879 rh.fusiform_1	rh.postcentral_23	lh.postcentral_6	lh.parstriangularis_7	rh.middletemporal_9	lh.middletemporal_7	lh.cuneus_5
880 rh.parsorbitalis_1	lh.rostralmiddlefrontal_11	lh.inferiortemporal_15	lh.rostralmiddlefrontal_8	rh.superiortemporal_15	lh.inferiortemporal_12	rh.parstriangularis_5
881 rh.middletemporal_11	lh.superiortemporal_17	lh.parahippocampal_3	rh.parahippocampal_6	lh.lingual_3	lh.postcentral_29	rh.parstriangularis_1
882 rh.lateralorbitofrontal_13	lh.lateralorbitofrontal_12	rh.lateralorbitofrontal_11	lh.lateralorbitofrontal_5	rh.middletemporal_18	rh.middletemporal_4	lh.postcentral_17
883 rh.superiortemporal_9	rh.inferiortemporal_16	lh.postcentral_22	lh.postcentral_22	rh.lateralorbitofrontal_2	lh.cuneus_3	rh.rostralmiddlefrontal_8
884 rh.inferiortemporal_16	lh.postcentral_28	lh.transversetemporal_4	lh.lateralorbitofrontal_9	lh.lateralorbitofrontal_3	lh.cuneus_2	lh.cuneus_3
885 lh.precentral_31	rh.superiorfrontal_40	rh.inferiortemporal_16	rh.rostralmiddlefrontal_17	lh.lingual_16	lh.fusiform_8	rh.lateralorbitofrontal_9
886 rh.lateralorbitofrontal_15	lh.inferiortemporal_15	lh.parstriangularis_7	rh.superiortemporal_23	lh.lingual_13	lh.transversetemporal_4	rh.parstriangularis_1
887 rh.inferiortemporal_5	lh.middletemporal_9	lh.lateralorbitofrontal_3	rh.medialorbitofrontal_8	lh.transversetemporal_4	lh.precentral_18	lh.medialorbitofrontal_2
888 lh.inferiortemporal_13	rh.middletemporal_19	lh.postcentral_1	rh.middletemporal_19	lh.postcentral_27	lh.inferiortemporal_2	lh.lingual_9
889 rh.superiorfrontal_39	rh.superiortemporal_13	lh.lateralorbitofrontal_4	rh.middletemporal_9	rh.medialorbitofrontal_8	rh.lateralorbitofrontal_5	rh.parahippocampal_6
890 rh.lateraloccipital_1	rh.middletemporal_9	lh.postcentral_27	rh.lateralorbitofrontal_11	rh.lateralorbitofrontal_13	rh.postcentral_20	lh.lateraloccipital_6
891 rh.lingual_8	rh.middletemporal_2	rh.parstriangularis_5	lh.postcentral_22	rh.lingual_11	lh.lateraloccipital_12	rh.lateralorbitofrontal_13
892 rh.fusiform_10	lh.inferiortemporal_27	rh.inferiortemporal_6	lh.superiortemporal_2	lh.postcentral_4	rh.bankssts_4	rh.lateralorbitofrontal_4
893 rh.inferiortemporal_1	rh.middletemporal_14	rh.middletemporal_14	rh.middletemporal_2	rh.rostralmiddlefrontal_12	lh.parahippocampal_3	lh.fusiform_4
894 rh.parstriangularis_1	rh.inferiortemporal_6	rh.superiortemporal_18	lh.parahippocampal_3	rh.superiortemporal_20	rh.superiortemporal_20	rh.postcentral_17
895 lh.fusiform_13	rh.medialorbitofrontal_8	lh.inferiortemporal_14	lh.middletemporal_9	lh.middletemporal_12	lh.lateraloccipital_19	rh.lingual_16
896 rh.medialorbitofrontal_8	lh.superiortemporal_16	lh.temporalpole_2	lh.rostralmiddlefrontal_1	rh.postcentral_28	lh.middletemporal_13	rh.superiortemporal_15
897 lh.inferiortemporal_15	rh.superiortemporal_18	rh.middletemporal_19	lh.rostralmiddlefrontal_11	rh.parstriangularis_1	lh.lateraloccipital_13	rh.inferiortemporal_11
898 rh.superiortemporal_20	rh.fusiform_1	rh.rostralmiddlefrontal_17	rh.superiortemporal_22	rh.cuneus_2	rh.postcentral_4	rh.lingual_2
899 lh.lateralorbitofrontal_3	lh.superiortemporal_23	lh.rostralmiddlefrontal_11	lh.temporalpole_2	rh.inferiortemporal_1	lh.lateraloccipital_10	lh.cuneus_7
900 rh.rostralmiddlefrontal_12	lh.superiortemporal_21	lh.parahippocampal_6	lh.superiortemporal_23	lh.parahippocampal_1	lh.postcentral_11	lh.lateraloccipital_12
901 rh.postcentral_28	rh.fusiform_10	lh.superiortemporal_16	lh.postcentral_27	rh.inferiortemporal_3	rh.inferiortemporal_8	lh.entorhinal_1
902 lh.lateralorbitofrontal_11	lh.parahippocampal_6	rh.parstriangularis_2	lh.postcentral_1	lh.middletemporal_9	lh.superiortemporal_22	lh.lateralorbitofrontal_2
903 lh.parstriangularis_3	lh.superiortemporal_2	lh.superiortemporal_21	lh.lateralorbitofrontal_12	lh.middletemporal_5	lh.superiortemporal_21	lh.superiorparietal_29
904 lh.superiortemporal_23	lh.fusiform_13	rh.inferiortemporal_11	rh.postcentral_23	rh.fusiform_11	lh.superiorparietal_17	rh.inferiortemporal_1
905 rh.superiortemporal_5	lh.lateralorbitofrontal_6	lh.middletemporal_9	lh.inferiortemporal_6	lh.rostralmiddlefrontal_25	rh.lateraloccipital_20	rh.cuneus_3
906 rh.superiorfrontal_40	lh.postcentral_6	rh.middletemporal_9	lh.postcentral_28	rh.inferiortemporal_9	rh.cuneus_7	lh.fusiform_14
907 lh.inferiortemporal_14	rh.superiortemporal_20	rh.medialorbitofrontal_4	lh.inferiortemporal_14	rh.parsorbitalis_3	lh.middletemporal_16	lh.insula_13
908 lh.middletemporal_8	rh.inferiortemporal_14	rh.superiortemporal_5	rh.fusiform_10	lh.lateralorbitofrontal_11	lh.inferiortemporal_10	lh.superiorparietal_27
909 rh.lateralorbitofrontal_16	rh.parahippocampal_5	lh.entorhinal_2	rh.superiortemporal_20	lh.middletemporal_2	lh.cuneus_7	rh.pericalcarine_5
910 lh.middletemporal_2	lh.parstriangularis_3	lh.superiortemporal_23	lh.fusiform_13	rh.lateralorbitofrontal_17	rh.lingual_14	rh.lingual_14
911 rh.medialorbitofrontal_3	lh.temporalpole_2	lh.postcentral_28	rh.fusiform_1	rh.superiortemporal_2	lh.superiortemporal_15	lh.temporalpole_1
912 rh.middletemporal_18	lh.parstriangularis_4	rh.middletemporal_2	lh.parstriangularis_4	rh.superiortemporal_8	rh.middletemporal_3	rh.cuneus_4
913 lh.parahippocampal_1	lh.middletemporal_2	rh.entorhinal_2	lh.middletemporal_12	lh.middletemporal_4	rh.superiortemporal_2	rh.cuneus_8
914 rh.lateralorbitofrontal_17	lh.middletemporal_4	rh.superiortemporal_22	rh.middletemporal_14	rh.temporalpole_2	rh.cuneus_4	lh.postcentral_27
915 rh.rostralmiddlefrontal_26	lh.lateralorbitofrontal_3	rh.fusiform_10	lh.medialorbitofrontal_1	rh.lateralorbitofrontal_2	lh.frontalpole_1	rh.cuneus_7
916 rh.superiortemporal_8	lh.middletemporal_12	rh.postcentral_23	lh.middletemporal_4	rh.medialorbitofrontal_11	rh.transversetemporal_1	lh.lingual_3
917 lh.superiortemporal_2	lh.inferiortemporal_13	lh.entorhinal_1	lh.middletemporal_2	lh.entorhinal_3	lh.lingual_4	rh.pericalcarine_3
918 lh.parstriangularis_4	rh.medialorbitofrontal_3	rh.medialorbitofrontal_3	lh.parstriangularis_3	rh.lateralorbitofrontal_16	lh.fusiform_12	lh.middletemporal_15

919 lh.rostralmiddlefrontal_25	lh.middletemporal_5	rh.lateralorbitofrontal_15	lh.medialorbitofrontal_10	lh.temporalpole_2	lh.bankssts_1	lh.superiortemporal_3
920 lh.entorhinal_3	lh.middletemporal_8	lh.fusiform_13	rh.medialorbitofrontal_3	rh.rostralmiddlefrontal_26	rh.lingual_8	rh.inferiortemporal_8
921 rh.lateralorbitofrontal_2	rh.superiortemporal_5	rh.lateralorbitofrontal_16	lh.temporalpole_3	lh.fusiform_18	rh.postcentral_25	lh.frontalpole_1
922 rh.medialorbitofrontal_4	lh.medialorbitofrontal_10	rh.superiortemporal_20	lh.parahippocampal_6	rh.lateraloccipital_1	lh.fusiform_1	lh.postcentral_20
923 lh.inferiortemporal_11	rh.inferiortemporal_5	lh.lateralorbitofrontal_12	lh.lateralorbitofrontal_3	rh.rostralmiddlefrontal_5	lh.postcentral_17	lh.postcentral_4
924 lh.middletemporal_4	lh.lateralorbitofrontal_9	rh.lateralorbitofrontal_8	lh.lateralorbitofrontal_4	lh.superiortemporal_19	rh.fusiform_5	rh.medialorbitofrontal_1
925 lh.superiortemporal_22	lh.superiortemporal_10	lh.middletemporal_4	lh.middletemporal_8	lh.inferiortemporal_11	rh.cuneus_3	lh.parahippocampal_6
926 rh.medialorbitofrontal_1	rh.lateralorbitofrontal_16	rh.fusiform_1	lh.superiortemporal_10	lh.rostralmiddlefrontal_2	lh.fusiform_10	lh.parstriangularis_7
927 rh.inferiortemporal_3	rh.parsorbitalis_1	lh.medialorbitofrontal_1	rh.superiortemporal_18	lh.parstriangularis_3	rh.inferiortemporal_6	lh.parstriangularis_4
928 lh.middletemporal_15	rh.lateralorbitofrontal_15	lh.middletemporal_2	rh.superiortemporal_5	rh.lingual_8	lh.transversetemporal_1	lh.postcentral_1
929 rh.parsorbitalis_3	rh.inferiortemporal_3	rh.parahippocampal_4	rh.entorhinal_2	rh.superiortemporal_5	lh.parahippocampal_4	lh.medialorbitofrontal_6
930 lh.middletemporal_12	rh.rostralmiddlefrontal_26	rh.parsorbitalis_1	rh.inferiortemporal_8	lh.inferiortemporal_13	rh.middletemporal_11	lh.inferiortemporal_5
931 rh.inferiortemporal_9	rh.middletemporal_11	rh.temporalpole_2	rh.lateralorbitofrontal_10	lh.parstriangularis_4	lh.postcentral_20	rh.lingual_1
932 lh.superiortemporal_10	rh.rostralmiddlefrontal_12	lh.superiortemporal_2	rh.inferiortemporal_3	lh.temporalpole_3	lh.middletemporal_15	lh.middletemporal_14
933 lh.medialorbitofrontal_10	rh.middletemporal_18	lh.middletemporal_8	lh.inferiortemporal_2	lh.middletemporal_15	lh.postcentral_27	rh.fusiform_6
934 rh.medialorbitofrontal_11	rh.medialorbitofrontal_4	lh.fusiform_18	lh.inferiortemporal_13	rh.medialorbitofrontal_1	lh.middletemporal_14	lh.postcentral_22
935 rh.inferiortemporal_4	rh.medialorbitofrontal_1	lh.parstriangularis_3	rh.parahippocampal_4	rh.fusiform_16	lh.inferiortemporal_8	lh.lingual_13
936 rh.middletemporal_3	lh.temporalpole_3	rh.rostralmiddlefrontal_26	rh.lateralorbitofrontal_16	lh.lateralorbitofrontal_15	rh.frontalpole_2	lh.parstriangularis_3
937 lh.parsorbitalis_3	lh.superiortemporal_22	lh.temporalpole_3	lh.medialorbitofrontal_2	lh.lateralorbitofrontal_8	rh.pericalcarine_3	rh.lateralorbitofrontal_6
938 lh.lateralorbitofrontal_15	rh.inferiortemporal_9	rh.lateralorbitofrontal_17	rh.rostralmiddlefrontal_26	rh.inferiortemporal_14	rh.superiortemporal_22	rh.middletemporal_5
939 lh.medialorbitofrontal_8	lh.middletemporal_15	rh.rostralmiddlefrontal_8	rh.medialorbitofrontal_6	lh.middletemporal_8	lh.inferiortemporal_9	rh.superiortemporal_5
940 rh.rostralmiddlefrontal_5	lh.parsorbitalis_3	rh.inferiortemporal_3	rh.inferiortemporal_9	lh.entorhinal_2	lh.parahippocampal_2	rh.superiortemporal_2
941 rh.temporalpole_2	lh.entorhinal_3	lh.parstriangularis_4	lh.parsorbitalis_3	rh.medialorbitofrontal_3	lh.lateraloccipital_14	lh.lingual_5
942 rh.superiortemporal_2	lh.rostralmiddlefrontal_25	lh.middletemporal_12	rh.medialorbitofrontal_1	rh.rostralmiddlefrontal_8	lh.superiortemporal_25	lh.parsorbitalis_3
943 lh.fusiform_18	rh.lateralorbitofrontal_11	lh.middletemporal_15	lh.fusiform_18	lh.medialorbitofrontal_2	rh.fusiform_8	rh.cuneus_1
944 lh.entorhinal_2	rh.superiortemporal_22	rh.lateralorbitofrontal_10	rh.medialorbitofrontal_4	lh.superiortemporal_22	rh.fusiform_11	rh.postcentral_23
945 rh.rostralmiddlefrontal_8	rh.inferiortemporal_4	lh.medialorbitofrontal_6	lh.superiortemporal_12	lh.parsorbitalis_3	lh.inferiortemporal_4	rh.superiortemporal_17
946 lh.medialorbitofrontal_6	lh.fusiform_18	rh.medialorbitofrontal_11	rh.inferiortemporal_4	lh.superiortemporal_23	lh.superiorparietal_29	rh.pericalcarine_6
947 lh.temporalpole_2	lh.medialorbitofrontal_2	rh.rostralmiddlefrontal_12	lh.superiortemporal_22	rh.superiortemporal_10	rh.lingual_16	rh.lateraloccipital_1
948 rh.superiortemporal_7	rh.lateralorbitofrontal_17	rh.inferiortemporal_5	lh.middletemporal_15	lh.medialorbitofrontal_10	rh.superiortemporal_13	lh.superiortemporal_13
949 lh.medialorbitofrontal_2	rh.lateralorbitofrontal_2	lh.inferiortemporal_13	rh.middletemporal_18	lh.medialorbitofrontal_6	lh.superiortemporal_13	rh.lingual_13
950 lh.rostralmiddlefrontal_2	lh.parahippocampal_3	rh.middletemporal_11	rh.inferiortemporal_5	lh.superiortemporal_10	lh.superiortemporal_26	lh.lateralorbitofrontal_12
951 lh.temporalpole_3	lh.lateralorbitofrontal_11	rh.medialorbitofrontal_6	rh.temporalpole_2	lh.temporalpole_3	rh.lateraloccipital_1	lh.parsorbitalis_1
952 lh.superiortemporal_21	rh.temporalpole_2	lh.middletemporal_5	lh.entorhinal_3	lh.superiortemporal_7	lh.lingual_3	rh.fusiform_11
953 lh.lateralorbitofrontal_6	rh.entorhinal_2	rh.medialorbitofrontal_1	lh.rostralmiddlefrontal_25	rh.medialorbitofrontal_6	lh.temporalpole_1	lh.medialorbitofrontal_10
954 lh.postcentral_6	lh.inferiortemporal_11	rh.inferiortemporal_9	rh.rostralmiddlefrontal_12	rh.middletemporal_3	lh.middletemporal_9	lh.superiortemporal_5
955 lh.entorhinal_1	rh.inferiortemporal_8	lh.entorhinal_3	lh.medialorbitofrontal_6	rh.superiortemporal_2	rh.superiortemporal_7	rh.middletemporal_3
956 rh.entorhinal_2	lh.medialorbitofrontal_6	rh.middletemporal_18	lh.middletemporal_5	lh.lateralorbitofrontal_6	lh.fusiform_4	rh.entorhinal_2
957 rh.inferiortemporal_8	lh.lateralorbitofrontal_4	lh.superiortemporal_10	rh.lateralorbitofrontal_15	lh.entorhinal_1	rh.frontalpole_1	rh.postcentral_6
958 rh.lateralorbitofrontal_8	lh.entorhinal_2	lh.rostralmiddlefrontal_2	lh.entorhinal_2	lh.medialorbitofrontal_8	lh.medialorbitofrontal_10	lh.superiortemporal_10
959 rh.medialorbitofrontal_6	rh.superiortemporal_8	lh.rostralmiddlefrontal_25	rh.lateralorbitofrontal_2	rh.superiortemporal_1	lh.superiortemporal_23	lh.transversetemporal_4
960 rh.middletemporal_17	rh.medialorbitofrontal_6	rh.lateralorbitofrontal_2	rh.parsorbitalis_1	lh.inferiortemporal_2	lh.postcentral_4	lh.superiortemporal_22
961 rh.superiortemporal_13	rh.parsorbitalis_3	rh.inferiortemporal_4	rh.lateralorbitofrontal_17	rh.entorhinal_1	rh.lingual_3	lh.middletemporal_9
962 lh.superiortemporal_16	lh.medialorbitofrontal_1	lh.inferiortemporal_2	lh.rostralmiddlefrontal_2	rh.superiortemporal_7	rh.cuneus_2	lh.inferiortemporal_14
963 rh.parahippocampal_5	lh.rostralmiddlefrontal_2	lh.lateralorbitofrontal_11	lh.entorhinal_1	rh.inferiortemporal_8	lh.middletemporal_5	lh.middletemporal_5
964 rh.superiortemporal_10	rh.rostralmiddlefrontal_8	rh.medialorbitofrontal_5	rh.lateralorbitofrontal_9	lh.postcentral_6	lh.lingual_13	lh.lingual_16

965 lh.superiortemporal_7	lh.inferiortemporal_2	rh.inferiortemporal_8	rh.middletemporal_11	rh.inferiortemporal_4	lh.lingual_9	rh.medialorbitofrontal_3
966 rh.entorhinal_1	rh.medialorbitofrontal_11	lh.parsorbitalis_3	rh.lateralorbitofrontal_7	rh.lateralorbitofrontal_9	rh.postcentral_23	rh.parahippocampal_5
967 rh.lateralorbitofrontal_9	rh.parahippocampal_4	rh.lateralorbitofrontal_9	rh.rostralmiddlefrontal_8	lh.superiortemporal_21	lh.lingual_16	lh.middletemporal_8
968 rh.parsorbitalis_2	lh.entorhinal_1	lh.superiortemporal_22	lh.inferiortemporal_11	rh.entorhinal_2	rh.parahippocampal_4	lh.frontalpole_2
969 lh.lateralorbitofrontal_4	lh.medialorbitofrontal_8	rh.entorhinal_1	rh.lateralorbitofrontal_8	rh.parahippocampal_5	lh.lateralorbitofrontal_4	rh.lingual_8
970 lh.superiortemporal_17	rh.lateralorbitofrontal_8	lh.inferiortemporal_11	lh.superiortemporal_6	rh.superiortemporal_13	rh.middletemporal_6	rh.postcentral_22
971 rh.fusiform_16	rh.lateralorbitofrontal_9	rh.parsorbitalis_3	lh.lateralorbitofrontal_11	lh.parahippocampal_3	rh.postcentral_17	rh.parahippocampal_4
972 rh.temporalpole_3	lh.lateralorbitofrontal_15	lh.medialorbitofrontal_2	rh.parsorbitalis_3	rh.middletemporal_17	rh.lingual_1	rh.superiortemporal_7
973 lh.inferiortemporal_2	rh.middletemporal_3	rh.medialorbitofrontal_2	rh.medialorbitofrontal_11	lh.lateralorbitofrontal_4	rh.pericalcarine_6	rh.cuneus_2
974 rh.parahippocampal_4	rh.superiortemporal_10	rh.superiortemporal_10	rh.medialorbitofrontal_2	rh.parahippocampal_4	lh.frontalpole_2	rh.superiortemporal_13
975 rh.superiortemporal_1	rh.lateralorbitofrontal_10	rh.parsorbitalis_2	rh.superiortemporal_10	lh.lateralorbitofrontal_9	lh.superiortemporal_19	lh.superiortemporal_19
976 lh.lateralorbitofrontal_9	rh.parsorbitalis_2	rh.rostralmiddlefrontal_5	rh.superiortemporal_8	lh.superiortemporal_14	rh.lingual_2	lh.medialorbitofrontal_8
977 lh.rostralmiddlefrontal_20	rh.rostralmiddlefrontal_5	lh.medialorbitofrontal_9	rh.parsorbitalis_4	lh.rostralmiddlefrontal_20	rh.middletemporal_1	rh.lingual_11
978 lh.middletemporal_11	rh.entorhinal_1	rh.lateralorbitofrontal_7	rh.superiortemporal_17	lh.superiortemporal_17	rh.superiortemporal_4	rh.lateralorbitofrontal_4
979 lh.parsorbitalis_2	lh.superiortemporal_12	lh.superiortemporal_6	rh.parsorbitalis_2	rh.parsorbitalis_2	rh.inferiortemporal_4	lh.inferiortemporal_13
980 rh.superiortemporal_19	rh.middletemporal_17	rh.fusiform_16	lh.parsorbitalis_2	rh.middletemporal_5	rh.medialorbitofrontal_9	lh.lateralorbitofrontal_9
981 rh.superiortemporal_22	lh.parsorbitalis_2	lh.superiortemporal_12	lh.medialorbitofrontal_9	lh.parsorbitalis_2	lh.middletemporal_8	lh.superiortemporal_21
982 rh.lateralorbitofrontal_11	lh.rostralmiddlefrontal_20	rh.superiortemporal_17	lh.medialorbitofrontal_8	lh.frontalpole_1	lh.inferiortemporal_14	lh.parsorbitalis_2
983 Brain-Stem	rh.fusiform_16	rh.superiortemporal_8	rh.entorhinal_1	lh.superiortemporal_16	rh.fusiform_6	lh.rostralmiddlefrontal_20
984 lh.medialorbitofrontal_1	rh.parsorbitalis_4	rh.parsorbitalis_4	lh.lateralorbitofrontal_14	rh.temporalpole_1	rh.parahippocampal_5	rh.middletemporal_1
985 lh.parahippocampal_3	lh.medialorbitofrontal_9	lh.medialorbitofrontal_8	rh.medialorbitofrontal_5	rh.superiortemporal_22	rh.postcentral_22	rh.frontalpole_1
986 rh.middletemporal_5	lh.superiortemporal_6	rh.middletemporal_17	lh.rostralmiddlefrontal_20	lh.middletemporal_11	lh.inferiortemporal_13	rh.middletemporal_17
987 rh.parsorbitalis_4	rh.superiortemporal_1	lh.rostralmiddlefrontal_20	rh.middletemporal_17	lh.parsorbitalis_1	lh.lingual_5	lh.superiortemporal_23
988 lh.medialorbitofrontal_9	lh.middletemporal_11	rh.temporalpole_1	lh.lateralorbitofrontal_15	rh.lateralorbitofrontal_11	lh.lateralorbitofrontal_9	rh.medialorbitofrontal_9
989 lh.parsorbitalis_1	rh.superiortemporal_17	rh.middletemporal_3	lh.lateralorbitofrontal_16	rh.superiortemporal_19	rh.parsorbitalis_2	rh.superiortemporal_22
990 lh.frontalpole_1	rh.medialorbitofrontal_5	lh.parsorbitalis_4	rh.fusiform_16	lh.medialorbitofrontal_1	lh.rostralmiddlefrontal_20	rh.inferiortemporal_4
991 rh.lateralorbitofrontal_10	rh.medialorbitofrontal_2	lh.lateralorbitofrontal_16	rh.middletemporal_3	lh.frontalpole_2	rh.lingual_11	lh.medialorbitofrontal_1
992 rh.medialorbitofrontal_5	rh.lateralorbitofrontal_7	lh.lateralorbitofrontal_15	rh.rostralmiddlefrontal_5	rh.superiortemporal_17	lh.superiortemporal_17	lh.medialorbitofrontal_17
993 lh.medialorbitofrontal_3	rh.temporalpole_3	lh.middletemporal_11	lh.parsorbitalis_4	lh.temporalpole_1	lh.superiortemporal_16	rh.parsorbitalis_2
994 lh.superiortemporal_6	lh.lateralorbitofrontal_14	lh.parsorbitalis_2	rh.superiortemporal_1	lh.medialorbitofrontal_9	lh.lateralorbitofrontal_16	lh.lateralorbitofrontal_11
995 lh.superiortemporal_12	lh.superiortemporal_7	rh.frontalpole_2	rh.frontalpole_2	rh.parsorbitalis_4	rh.lateralorbitofrontal_11	rh.superiortemporal_4
996 rh.middletemporal_7	lh.parsorbitalis_4	lh.lateralorbitofrontal_14	lh.lateralorbitofrontal_1	lh.medialorbitofrontal_3	rh.superiortemporal_19	lh.medialorbitofrontal_9
997 lh.frontalpole_2	lh.lateralorbitofrontal_16	rh.superiortemporal_1	lh.superiortemporal_15	rh.medialorbitofrontal_5	rh.medialorbitofrontal_7	rh.parsorbitalis_4
998 lh.superiortemporal_14	rh.frontalpole_1	lh.frontalpole_2	rh.temporalpole_1	rh.frontalpole_1	rh.frontalpole_1	rh.superiortemporal_19
999 rh.superiortemporal_17	lh.medialorbitofrontal_3	lh.temporalpole_1	rh.frontalpole_2	rh.medialorbitofrontal_9	rh.medialorbitofrontal_9	rh.medialorbitofrontal_2
1000 rh.frontalpole_1	lh.parsorbitalis_1	rh.temporalpole_3	lh.medialorbitofrontal_3	rh.medialorbitofrontal_7	rh.parsorbitalis_4	rh.medialorbitofrontal_2
1001 rh.medialorbitofrontal_9	rh.middletemporal_5	rh.middletemporal_5	rh.temporalpole_3	rh.lateralorbitofrontal_10	lh.medialorbitofrontal_1	lh.medialorbitofrontal_3
1002 lh.parsorbitalis_4	rh.temporalpole_1	rh.frontalpole_1	lh.parsorbitalis_1	rh.frontalpole_2	rh.lateralorbitofrontal_5	lh.middletemporal_11
1003 rh.medialorbitofrontal_2	lh.frontalpole_2	lh.superiortemporal_7	lh.frontalpole_2	rh.medialorbitofrontal_2	rh.lateralorbitofrontal_10	rh.medialorbitofrontal_5
1004 rh.temporalpole_1	lh.frontalpole_1	lh.medialorbitofrontal_3	lh.temporalpole_1	rh.middletemporal_1	rh.lateralorbitofrontal_2	rh.middletemporal_7
1005 lh.temporalpole_1	lh.temporalpole_1	lh.frontalpole_1	rh.middletemporal_5	lh.superiortemporal_6	rh.middletemporal_17	lh.lateralorbitofrontal_16
1006 rh.medialorbitofrontal_7	rh.middletemporal_7	rh.medialorbitofrontal_9	lh.superiortemporal_7	lh.superiortemporal_12	rh.middletemporal_7	lh.superiortemporal_16
1007 lh.lateralorbitofrontal_16	lh.superiortemporal_14	lh.parsorbitalis_1	lh.frontalpole_1	lh.parsorbitalis_4	lh.lateralorbitofrontal_14	rh.medialorbitofrontal_7
1008 rh.middletemporal_1	rh.medialorbitofrontal_9	lh.superiortemporal_15	rh.medialorbitofrontal_9	lh.lateralorbitofrontal_16	lh.medialorbitofrontal_9	lh.lateralorbitofrontal_14
1009 lh.lateralorbitofrontal_14	lh.superiortemporal_15	lh.superiortemporal_14	rh.medialorbitofrontal_7	rh.medialorbitofrontal_7	lh.middletemporal_11	rh.lateralorbitofrontal_10
1010 rh.lateralorbitofrontal_7	rh.frontalpole_2	rh.middletemporal_1	lh.superiortemporal_14	lh.lateralorbitofrontal_14	lh.superiortemporal_6	lh.parsorbitalis_4
					lh.parsorbitalis_4	lh.superiortemporal_6

