

University of Groningen

A population-based study of transformed marginal zone lymphoma

Bult, Johanna A A; Huisman, Francien; Zhong, Yujie; Veltmaat, Nick; Kluiver, Joost; Tonino, Sanne H; Vermaat, Joost S P; Chamuleau, Martine E D; Diepstra, Arjan; van den Berg, Anke

Published in:
Blood cancer journal

DOI:
[10.1038/s41408-023-00903-w](https://doi.org/10.1038/s41408-023-00903-w)

IMPORTANT NOTE: You are advised to consult the publisher's version (publisher's PDF) if you wish to cite from it. Please check the document version below.

Document Version
Publisher's PDF, also known as Version of record

Publication date:
2023

[Link to publication in University of Groningen/UMCG research database](#)

Citation for published version (APA):

Bult, J. A. A., Huisman, F., Zhong, Y., Veltmaat, N., Kluiver, J., Tonino, S. H., Vermaat, J. S. P., Chamuleau, M. E. D., Diepstra, A., van den Berg, A., Plattel, W. J., Brink, M., & Nijland, M. (2023). A population-based study of transformed marginal zone lymphoma: identifying outcome-related characteristics. *Blood cancer journal*, 13, Article 130. <https://doi.org/10.1038/s41408-023-00903-w>

Copyright

Other than for strictly personal use, it is not permitted to download or to forward/distribute the text or part of it without the consent of the author(s) and/or copyright holder(s), unless the work is under an open content license (like Creative Commons).

The publication may also be distributed here under the terms of Article 25fa of the Dutch Copyright Act, indicated by the "Taverne" license. More information can be found on the University of Groningen website: <https://www.rug.nl/library/open-access/self-archiving-pure/taverne-amendment>.

Take-down policy

If you believe that this document breaches copyright please contact us providing details, and we will remove access to the work immediately and investigate your claim.

Downloaded from the University of Groningen/UMCG research database (Pure): <http://www.rug.nl/research/portal>. For technical reasons the number of authors shown on this cover page is limited to 10 maximum.

ARTICLE OPEN



A population-based study of transformed marginal zone lymphoma: identifying outcome-related characteristics

Johanna A. A. Bult¹, Francien Huisman¹, Yujie Zhong^{1,2}, Nick Veltmaat¹, Joost Kluiver², Sanne H. Tonino³, Joost S. P. Vermaat⁴, Martine E. D. Chamuleau³, Arjan Diepstra², Anke van den Berg², Wouter J. Plattel¹, Mirian Brink⁵ and Marcel Nijland¹✉

© The Author(s) 2023

Histological transformation of marginal zone lymphoma (tMZL) into diffuse large B-cell lymphoma is associated with poor outcomes. Clinical characteristics associated with transformation risk and outcome after transformation are largely unknown due to scarcity of data. In this population-based study, competing risk analyses were performed to elucidate clinical characteristics associated with developing transformation among 1793 MZL patients using the Netherlands Cancer Registry. Cox regression analyses were performed to elucidate clinical characteristics associated with risk of relapse and mortality after transformation. Transformation occurred in 75 (4%) out of 1793 MZL patients. Elevated LDH and nodal MZL subtype at MZL diagnosis were associated with an increased risk, and radiotherapy with a reduced risk of developing tMZL. Most tMZL patients received R-(mini)CHOP ($n = 53$, 71%). Age >60 years and (immuno)chemotherapy before transformation were associated with an increased risk of relapse and mortality after transformation. Two-year progression-free survival (PFS) and overall survival (OS) were 66% (95% CI 52–77%) and 75% (95% CI 62–85%) for R-(mini)CHOP-treated tMZL patients, as compared to a PFS and OS both of 41% (95% CI 19–63%) for patients treated otherwise. Our study offers comprehensive insights into characteristics associated with transformation and survival after transformation, thereby optimizing guidelines and patient counseling.

Blood Cancer Journal (2023)13:130; <https://doi.org/10.1038/s41408-023-00903-w>

INTRODUCTION

Marginal zone lymphomas (MZLs) constitute 6–9% of mature B-cell neoplasms [1]. Annually, approximately 400 patients are diagnosed with MZL in the Netherlands [2]. The most common MZL subtypes are extranodal MZL (EMZL), nodal MZL (NMZL), and splenic MZL (SMZL) [1].

In general, MZLs are characterized by an indolent clinical course, with a 5-year relative survival estimate of 90% [3, 4]. Despite the favorable prognosis, approximately 4–18% of patients with MZL experience histological transformation into aggressive B-cell lymphomas, i.e. diffuse large B-cell lymphoma (DLBCL) [4–10]. Unlike newly diagnosed MZL, transformed MZLs (tMZLs) are associated with an aggressive clinical behavior and an inferior prognosis [4, 6, 10] with a 5-year overall survival (OS) of 65% [10].

Clinical characteristics at time of initial MZL diagnosis that have been associated with development of a transformation are: elevated levels of lactate dehydrogenase (LDH), advanced (III-IV) Ann Arbor stage, involvement of more than four nodal sites, a high follicular lymphoma International Prognostic Index (FLIPI) score, history of cancer, and failure to achieve complete remission after first-line treatment [8–10]. In addition, among patients with SMZL, presence of a complex karyotype at time of MZL diagnosis, defined by the presence of at least three clonal chromosomal

aberrations, has been associated with an increased risk of developing a transformation [6].

Data on outcome after tMZL diagnosis are limited and prognostic factors associated with outcome among tMZL patients are largely unknown. As such, guidance on treatment decisions and counseling can be challenging for patients with tMZL. Failure to achieve a complete remission, advanced Ann Arbor stage, high-risk International Prognostic Index (IPI) score, and a tMZL <1 year [5, 6, 10] have been associated with an inferior survival after tMZL diagnosis. However, these findings are based on studies with limited numbers of patients, and not all studies encompassed all three MZL subtypes [5, 6]. Therefore, the aim of this study is to identify characteristics associated with outcome of tMZL in a nationwide, population-based study.

METHODS

Netherlands Cancer registry and study population

The Netherlands Cancer Registry (NCR) [11] is a nationwide, population-based registry in which information on demographics and clinical characteristics is routinely collected by trained registrars through retrospective medical record review. Additional information on the NCR has been provided in the Supplementary.

Patients aged ≥ 18 years with a newly diagnosed MZL between January 1st, 2014 and December 31st, 2018 were identified in the NCR using the

¹Department of Hematology, University Medical Center Groningen, Groningen, the Netherlands. ²Department of Pathology and Medical Biology, University Medical Center Groningen, Groningen, the Netherlands. ³Department of Hematology, Amsterdam University Medical Center, Amsterdam, the Netherlands. ⁴Department of Hematology, Leiden University Medical Center, Leiden, the Netherlands. ⁵Department of Research and Development, Netherlands Comprehensive Cancer Organization (IKNL), Utrecht, the Netherlands. ✉email: m.nijland@umcg.nl

Received: 2 June 2023 Revised: 3 August 2023 Accepted: 15 August 2023

Published online: 01 September 2023

International Classification of Diseases for Oncology, 3rd edition (ICD-O-3) [12] of the World Health Organization (WHO) morphology code 9699/3 (EMZL and NMZL) and 9689/3 (SMZL). The MZL subtypes were distinguished in extranodal, nodal, and splenic subtype using first localization of presentation. Morphology code 9680/3 was used to identify histologically-proven transformations to DLBCL between January 1st, 2014 and December 31st, 2020. This time frame allowed a minimal follow-up of at least two years after MZL diagnosis to detect a transformation to DLBCL. A transformation was defined as a histologically-proven transformation from a MZL to DLBCL if the transformation occurred at least 3 months after MZL diagnosis, or if the transformation occurred within 3 months but after start of MZL treatment. Transformations that occurred within 3 months after untreated MZL diagnosis were excluded for this study.

Risk factors

Clinical characteristics associated with developing a tMZL (to DLBCL), and relapse and mortality after tMZL diagnosis were evaluated. These characteristics included: age (categorized into ≤ 60 years and > 60 years), gender, MZL subtype, Ann Arbor Stage (categorized into limited (stage I-II) and advanced (stage III-IV) Ann Arbor stage), elevated versus normal LDH, number of extranodal sites (categorized into < 2 and ≥ 2 extranodal sites), WHO performance score (categorized into a score of < 2 and ≥ 2), treatment group (categorized into no treatment (including surgery only and antibiotics only), radiotherapy, rituximab monotherapy, (immuno)chemotherapy, and other treatment), time to transformation (categorized into < 2 years and ≥ 2 years), and (immuno) chemotherapy received for initial MZL (hereafter referred to as prior (immuno)chemotherapy).

Table 1. Patient characteristics at time of marginal zone lymphoma diagnosis.

	All patients		Transformed		Non-transformed		p-value
	n = 1793		n = 75		n = 1718		
Female, no (%)	914	(51)	38	(51)	876	(51)	0.96
Age >60, no (%)	1256	(70)	50	(67)	1206	(70)	0.51
Age, median (range)	68	(18–97)	65	(18–87)	68	(18–97)	<0.05
MZL subtype, no (%)							<0.001
Extranodal	990	(55)	22	(29)	968	(56)	
Nodal	537	(30)	41	(55)	496	(29)	
Splenic	266	(15)	12	(16)	254	(15)	
Ann Arbor stage, no (%)							<0.001
I	697	(39)	12	(16)	685	(40)	
II	200	(11)	14	(19)	186	(11)	
III	130	(7)	15	(20)	115	(7)	
IV	715	(40)	34	(45)	681	(40)	
Unknown	51	(3)	0	(0)	51	(3)	
LDH, no (%)							<0.001
Normal	1335	(74)	47	(63)	1288	(75)	
Elevated	294	(16)	26	(35)	268	(16)	
Unknown	164	(9)	2	(3)	162	(9)	
Extranodal sites, no (%)							0.38
<2	1505	(84)	63	(84)	1442	(84)	
≥ 2	249	(14)	12	(16)	237	(14)	
Unknown	39	(2)	0	(0)	39	(2)	
WHO performance score, no (%)							0.79
<2	784	(44)	30	(40)	754	(44)	
≥ 2	51	(3)	2	(3)	49	(3)	
Unknown	958	(54)	43	(57)	915	(53)	
IPI-score, no (%) ^a							<0.01
≤ 2	1264	(71)	51	(68)	1213	(71)	
>2	313	(17)	22	(29)	291	(17)	
Unknown	216	(12)	2	(3)	214	(12)	
Treatment group, no (%)							<0.01
No treatment	917	(51)	40	(53)	877	(52)	
Radiotherapy only	384	(21)	4	(5)	380	(22)	
Rituximab monotherapy	70	(4)	3	(4)	67	(4)	
(Immuno)chemotherapy	402	(22)	27	(36)	375	(22)	
Other/unknown	20	(1)	1	(1)	19	(1)	

MZL marginal zone lymphoma, LDH lactate dehydrogenase, IPI-score International Prognostic Index score.

*Statistically significant P-values (P-value <0.05) are presented in bold.

^aMissing WHO performance scores were scored as 0 for the calculation of the IPI-score.

Endpoints

Endpoints included cumulative incidence of tMZL, overall survival post-diagnosis MZL (OS-1), overall survival post-diagnosis tMZL (OS-2), relative survival (RS) post-diagnosis tMZL, and progression-free survival post-diagnosis tMZL (PFS). Time to first event (transformation or death) was defined as the time between initial MZL diagnosis to date of first event. OS-1 was defined as time between initial MZL diagnosis and death by any cause, whereas OS-2 was defined as time between transformation and death by any cause. RS was defined as the ratio of the OS-2 to the expected OS of an equivalent group from the general population, matched by age and sex. As such, RS reflects the overall excess mortality associated with a tMZL diagnosis, thereby estimating disease specific survival in the absence of information on the cause of death. Progression-free survival (PFS) was defined as time between transformation and relapse of DLBCL or death by any cause, whichever came first.

Statistical analysis

Distributions of age, gender, MZL subtype, Ann Arbor stage, and International Prognostics Index (IPI) [13] score at baseline of MZL diagnosis were compared between patients who did or did not develop a transformation. The Pearson χ^2 test was used to compare categorical variables. The Kruskal–Wallis test was used to compare median age and median follow-up time. Kaplan–Meier estimates were used to analyze survival and the log-rank test was used to evaluate differences between survival curves.

Two analyses were conducted, labeled A and B. First, the cumulative incidence of tMZL and clinical characteristics associated with development of tMZL were evaluated in analysis A, using competing risk methods with death as competing risk. Due to immortal time bias inherent in the period until a transformation, a Cox regression analysis was performed, including transformation as time-varying covariate, in order to assess the association between transformation and mortality risk. All newly diagnosed MZL patients diagnosed between 2014 and 2018 were included with survival follow-up until December 31st, 2020, as transformations were monitored until this date. Secondly, survival rates after tMZL diagnosis and clinical characteristics associated with relapse and mortality after tMZL diagnosis were evaluated in analysis B, thereby including only tMZL patients who received treatment for their transformation. Of the tMZL patients, five did not receive treatment due to an unfit physical condition ($n=3$) or to patient's refusal ($n=2$). These patients were excluded for further analyses. Survival follow-up was up to January 31st, 2023, resulting in at least two years post-diagnosis of tMZL for each patient.

Competing risk regression models were constructed with the Fine and Gray methodology [14] to identify clinical characteristics associated with developing a transformation, with death as competing risk. Using competing-risk analysis, sub-distribution hazard ratios (SHR) with 95% confidence intervals (CI) were estimated. The impact of the following

variables at MZL diagnosis were assessed in the analysis for clinical characteristics associated with developing a tMZL (A): age, gender, MZL subtype, Ann Arbor stage, LDH, number of extranodal sites, WHO performance score, and treatment group.

Cox regression analyses were performed and hazard ratios (HR) with 95% CI were calculated to identify clinical characteristics associated with relapse and mortality after tMZL diagnosis. The impact of the variables used in analysis A at tMZL diagnosis were assessed in the analysis for clinical characteristics associated with relapse and mortality after tMZL diagnosis (B), except for treatment group. In addition, time to transformation and prior (immuno)chemotherapy were included as risk factors in analysis B.

For both competing risk regression analyses and Cox regression analyses, univariable analyses were performed and a multivariable model was built using a backwards stepwise regression process, whereby variables with a p -value < 0.05 were included in the final model.

P -values < 0.05 were considered statistically significant. All statistical analyses were performed with STATA version 17.0 (StataCorp, College Station, TX).

RESULTS

Patient characteristics at MZL diagnosis

A total of 1793 patients with newly diagnosed MZL were identified in the NCR. Median age at diagnosis was 68 years (range 18–97), 51% were female, and 50% had a limited Ann Arbor stage (Table 1). According to localization of first appearance, 55% ($n=990$) were diagnosed with EMZL, 30% ($n=537$) with NMZL, and 15% ($n=266$) with SMZL.

Analysis A: clinical characteristics associated with transformation

With a median follow-up time of 45 months (range 0–84) after initial MZL diagnosis, 4% ($n=75$) of MZL cases developed a histologically-proven transformation to DLBCL. Median follow-up time for EMZL was 46 months (0–84), for NMZL 45 months (0–84), and for SMZL 42 months (1–84) ($p < 0.05$). Median time to transformation was 18 months (range 3–71). The 2-year cumulative incidence of transformation was 3% (95% CI 2–3%; Fig. 1A). The incidence rate of transformation was 11 per 1000 person-years (95% CI 9–14). No significant difference was observed in the incidence rate between the first year (13 per 1000 person-years) and second year (15 per 1000 person-years) of follow-up. A transformation was most frequently observed in NMZL (41 out of 537 (8%)), followed by SMZL (12 out of 266 (5%)), and EMZL (22

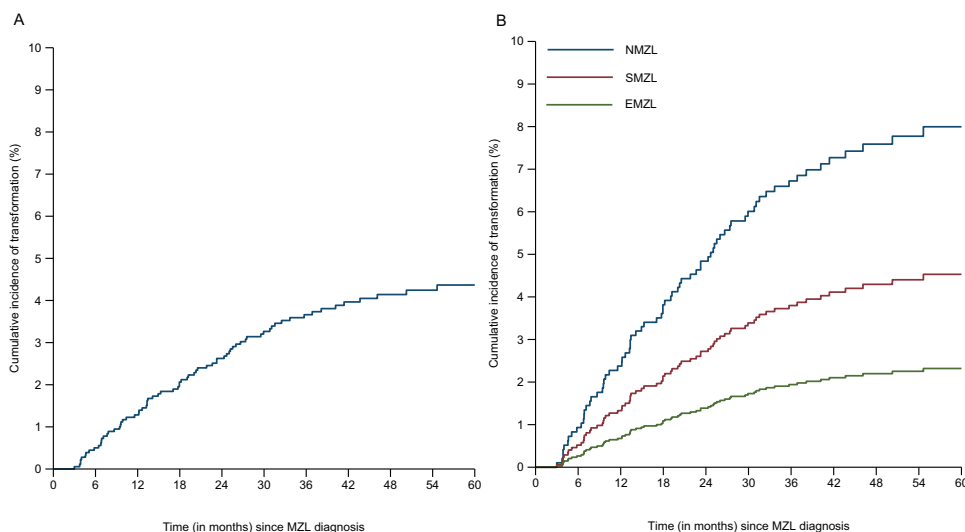


Fig. 1 Cumulative incidence of transformation in 1793 marginal zone lymphoma (MZL) patients between 2014 and 2020. **A** Cumulative incidence of transformation for the entire cohort of MZL patients; **B** Cumulative incidence of transformation per MZL subtype, NMZL nodal MZL, SMZL splenic MZL, EMZL extranodal MZL.

Table 2. Patient characteristics at time of transformed marginal zone lymphoma diagnosis.

	Total		R-(mini)CHOP		Other treatment		No treatment		p-value
	n = 75		n = 53		n = 17		n = 5		
Female, no (%)	38	(51)	29	(55)	8	(47)	1	(20)	0.31
Age >60, no (%)	54	(72)	37	(70)	12	(71)	5	(100)	0.35
Age, median (range)	67	(34–89)	66	(34–84)	67	(40–81)	77	(62–89)	0.12
MZL subtype, no (%)									0.67
Extranodal	22	(29)	17	(32)	5	(29)	0	(0)	
Nodal	41	(55)	28	(53)	9	(53)	4	(80)	
Splenic	12	(16)	8	(15)	3	(18)	1	(20)	
Ann Arbor stage, no (%)									0.18
Limited (I-II)	15	(20)	14	(26)	0	(0)	1	(20)	
Advanced (III-IV)	58	(77)	38	(72)	16	(94)	4	(80)	
Unknown	2	(3)	1	(2)	1	(6)	0	(0)	
LDH, no (%)									0.54
Normal	32	(43)	22	(42)	9	(53)	1	(20)	
Elevated	40	(53)	28	(53)	8	(47)	4	(80)	
Unknown	3	(4)	3	(6)	0	(0)	0	(0)	
Extranodal sites, no (%)									0.03
<2	53	(71)	38	(72)	11	(65)	4	(80)	
≥2	19	(25)	15	(28)	3	(18)	1	(20)	
Unknown	3	(4)	0	(0)	3	(18)	0	(0)	
WHO performance score, no (%)									0.61
<2	34	(45)	26	(49)	7	(41)	1	(20)	
≥2	2	(3)	1	(2)	1	(6)	0	(0)	
Unknown	39	(52)	26	(49)	9	(53)	4	(80)	
IPI-score, no (%) ^a									0.53
≤2	34	(45)	24	(45)	8	(47)	2	(40)	
>2	34	(45)	25	(47)	6	(35)	3	(60)	
Unknown	7	(9)	4	(8)	3	(18)	0	(0)	
Time to transformation <2 years, no (%)	47	(63)	34	(64)	10	(59)	3	(60)	0.92
Prior (immuno)chemotherapy, no (%)									<0.001
No	41	(55)	38	(72)	2	(12)	1	(20)	
Yes	33	(44)	14	(26)	15	(88)	4	(80)	
Unknown	1	(1)	1	(2)	0	(0)	0	(0)	

Statistically significant *P*-values (*P*-value <0.05) are presented in bold.

MZL marginal zone lymphoma, LDH lactate dehydrogenase, IPI-score International Prognostic Index score.

**P*-values are compared between the three treatment groups: R-(mini)CHOP (R-CHOP: *n* = 49, R-miniCHOP: *n* = 4), other treatment (including R-DHAP (*n* = 9), BR (*n* = 2), R-PECC (*n* = 2), R-CVP (*n* = 1), R-GDP (*n* = 1), CHOP21 (*n* = 1), and R-MBVP (*n* = 1)), and no treatment.

^aMissing WHO performance scores were scored as 0 for the calculation of the IPI-score.

out of 990 (2%); *p* < 0.01) (Fig. 1B, Table 1). The majority of tMZL patients – 47 out of 75 patients (63%) – developed a tMZL within two years following MZL diagnosis (Table 2).

Risk factors associated with occurrence of tMZL from uni- and multivariable assessment are presented in Supplementary Table S1. In the multivariable analysis, elevated LDH (SHR 2.03, 95% CI 1.24–3.33) and a NMZL subtype (SHR 2.31, 95% CI 1.43–3.74) were associated with an increased risk of tMZL development. In addition, MZL patients treated with radiotherapy had a reduced risk of tMZL development compared to MZL patients who did not receive treatment (SHR 0.27, 95% CI 0.09–0.76).

Five-year OS-1 estimates were 78% (95% CI 75–80%) (Supplementary Fig. S1) for all MZL patients, and 63% (95% CI 51–73%) and 78% (95% CI 76–81%) for patients with or without a tMZL, respectively (*p* < 0.01; Fig. 2). In the multivariable analysis with

transformation as time-varying covariate, transformation (HR 2.72, 95% CI 1.82–4.06), as well as age >60 years (HR 4.51, 95% CI 3.13–6.51), NMZL subtype (HR 1.41, 95% CI 1.13–1.78), elevated LDH (HR 2.11, 95% CI 1.64–2.71), and WHO performance score ≥2 (HR 4.61, 95% CI 2.98–7.15) were associated with an increased risk of mortality. A female gender (HR 0.80, 95% CI 0.65–0.98) and radiotherapy compared to no treatment (HR 0.55, 95% CI 0.38–0.78) were associated with a reduced mortality risk (Supplementary Table S2).

Analysis B: Clinical characteristics associated with outcome after transformation Median age at tMZL diagnosis was 67 years (range 34–89), and 58 out of 75 (77%) had advanced stage disease at tMZL diagnosis (Table 2). In total, 33 (44%) tMZL patients received prior (immuno)chemotherapy and 41 (55%) did not. For one (1%) tMZL patient, treatment at initial MZL diagnosis was unknown.

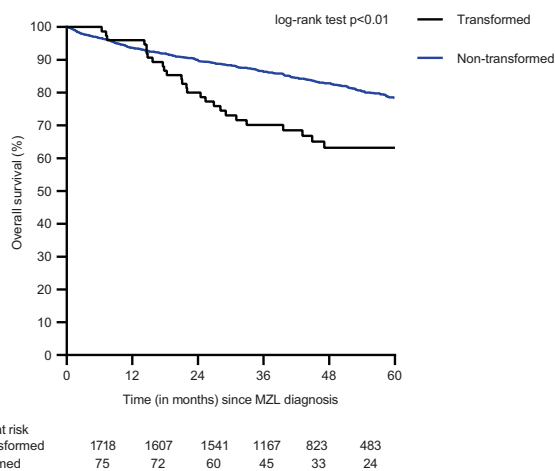


Fig. 2 Overall survival (OS-1) of marginal zone lymphoma patients with or without a transformation. The black line indicates transformed MZL patients and the blue line indicates non-transformed MZL patients.

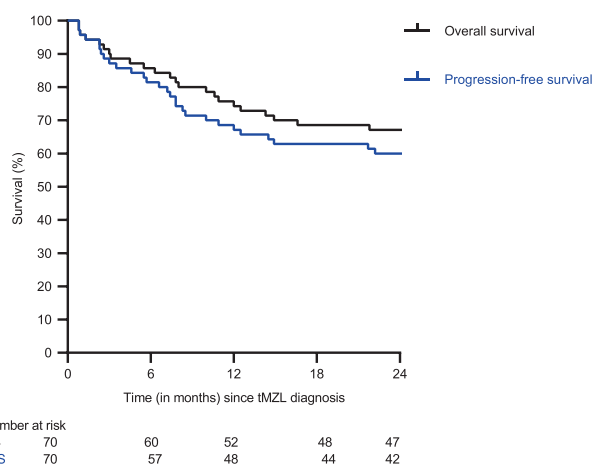


Fig. 3 Progression-free survival and overall survival of transformed marginal zone lymphoma patients. The black line indicates the overall-survival after tMZL diagnosis, and the blue line indicates the progression-free survival after tMZL diagnosis.

The median number of prior lines of (immuno)chemotherapy was 1 (1–3).

At time of transformation, most tMZL patients were treated with rituximab combined with cyclophosphamide, doxorubicin, vincristine, and prednisolone (R-CHOP) ($n = 49$ (65%)), or R-miniCHOP ($n = 4$ (8%)). Median age of patients treated with R-(mini)CHOP was 66 years (34–84). Among the remaining 22 (29%) tMZL patients, 11 (15%) were treated with salvage chemotherapy, consisting of rituximab combined with cisplatin, cytosine arabinoside and dexamethasone (R-DHAP) ($n = 9$), rituximab, gemcitabine, cisplatin, and dexamethasone (R-GDP) ($n = 1$), and rituximab, methotrexate, BCNU, VP16, and methylprednisolone (R-MBVP) ($n = 1$). Six patients (8%) were treated with less intensive treatment, consisting of rituximab, prednisolone, etoposide, chlorambucil, and lomustine (R-PECC) ($n = 2$), bendamustine and rituximab (BR) ($n = 2$), rituximab, cyclophosphamide, vincristine, and prednisolone (R-CVP) ($n = 1$), and CHOP only ($n = 1$). Five patients (7%) did not receive treatment. Most patients treated with salvage chemotherapy or less intensive treatment ($n = 15$ (88%)) received prior immunochemotherapy, including R-CHOP ($n = 6$) and R-CVP ($n = 9$). Patients treated with less intensive

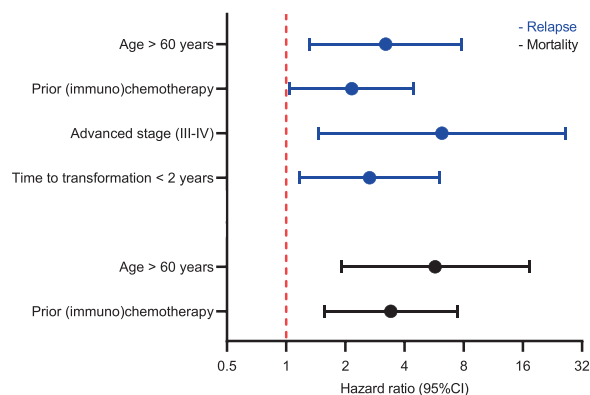


Fig. 4 Forest plot of multivariable analysis for risk of relapse and mortality among transformed marginal zone lymphoma patients. Hazard ratios and 95% confidence intervals (CIs) are presented in blue for risk factors associated with relapse and in black for risk factors associated with mortality.

treatment were older (median age 72 years (59–81)) compared to patients with salvage chemotherapy (median age 64 years (40–72)) ($p = 0.02$).

The median follow-up time after tMZL diagnosis for the 70 tMZL patients who received treatment was 41 months (range 1–97). The 2-year PFS and OS-2 rates were 60% (95% CI 48–70%) and 67% (95% CI 55–77%), respectively (Fig. 3). The 2-year RS was 69% (95% CI 56–79%). Nine (13%) tMZL patients relapsed within a median time of eight months (range 5–25) and in four (6%) tMZL patients, the disease progressed. In the multivariable analysis, age >60 years (HR 3.21, 95% CI 1.32–7.79), advanced stage (HR 6.20, 95% CI 1.46–26.27), time to transformation <2 years (HR 2.66, 95% CI 1.17–6.04), and prior (immuno)chemotherapy (HR 2.16, 95% CI 1.04–4.46) were associated with an increased risk of relapse (Fig. 4, Supplementary Table S3). Age >60 years (HR 5.73, 95% CI 1.91–17.23), and prior (immuno) chemotherapy (HR 3.41, 95% CI 1.57–7.42) were associated with a higher risk of mortality (Fig. 4, Supplementary Table S4).

The 2-year PFS, OS-2, and RS rates for tMZL patients treated with R-(mini)CHOP ($n = 53$) were 66% (95% CI 52–77%), 75% (95% CI 62–85%), and 78% (95% CI 63–87%), respectively. In comparison, for tMZL patients who received alternative treatment regimens ($n = 17$), the 2-year PFS and OS-2 rates were both 41% (95% CI 19–63%; Supplementary Fig. S2), and the 2-year RS was 42% (95% CI 19–64%).

DISCUSSION

In this population-based study among MZL patients, the 2-year cumulative incidence of transformation was 3%. Outcome of patients who developed a transformation was worse compared to MZL patients without a transformation. At MZL diagnosis, elevated LDH and a nodal MZL subtype were associated with an increased risk of developing a transformation. Age >60 years and prior (immuno)chemotherapy were identified as poor prognostic factors for survival after tMZL.

The low cumulative incidence of transformation as observed in the current study is in line with previous reports with 5-year cumulative incidence rates of 2.5–6.6% [4, 5, 7, 8, 10]. However, some studies have reported higher 5-year incidence rates, as much as 10% [6, 9]. Most transformations occurred within two years following MZL diagnosis. While some studies [10, 15, 16] have suggested that the incidence of histological transformation in indolent lymphomas may reach a plateau phase after ~15 years, the duration of follow-up in our current study is too short to comment on that. Consistent with previous reports, our study also showed that an elevated LDH at initial MZL diagnosis was associated with a higher risk of developing a transformation

[8, 10]. In addition, among the three subtypes, NMZL patients had the highest risk of developing a transformation. Interestingly, the use of radiotherapy was associated with a reduced risk of transformation. This could be attributed to the curative potential of radiotherapy in limited stage disease [17].

Due to the paucity of data on outcome after tMZL, guidance on treatment decisions can be challenging. Previous studies [4–6, 10] reporting on outcome after tMZL diagnosis were based on limited and heterogeneous cohorts. The largest cohort including all three MZL subtypes consisted of 55 tMZL patients [4]. However, this study did not provide information on clinical characteristics or treatment at time of tMZL diagnosis. Other studies included a lower number of tMZL patients ($n = 34$) [10], and/or included only one MZL subtype [5, 6]. To the best of our knowledge, this study represents the most extensive population-based analysis to date, offering comprehensive insights into the treatment and outcomes of tMZL, thereby optimizing clinical guidelines and patient counseling.

In accordance with previous studies [4, 6, 10], MZL patients who developed a transformation had a worse OS compared to patients without a transformation. The 2-year PFS and OS after tMZL for treated patients was 60% and 67%, respectively, which was most evident for patients who received R-CHOP with a 2-year PFS and OS of 66% and 75%, respectively. The PFS and OS are similar to the PFS and OS of newly diagnosed DLBCL patients [18, 19]. These findings align with previous observations in follicular lymphoma and chronic lymphocytic leukemia, wherein the outcome of previously untreated patients with a transformation is similar to de novo DLBCL [20, 21]. In our cohort, most tMZL patients who received non-anthracycline based chemotherapy, such as R-DHAP, BR or R-PECC, had received prior (immuno)chemotherapy, such as R-CVP and/or R-CHOP, and had an unfavorable outcome after tMZL diagnosis. (Immuno)chemotherapy is often administered as a first-line treatment to MZL patients with an advanced stage disease [17, 22]. These patients might have a more aggressive tumor biology resulting in a worse prognosis. These findings suggest that for patients without prior anthracycline based chemotherapy, R-CHOP appears to be the preferred regimen, while patients with prior anthracycline-based chemotherapy present a subgroup of patients that requires tailored treatment guidelines for better outcomes.

The mechanism underlying transformation in MZL is not known. Therefore, there is a need for further studies to elucidate the underlying mutational landscape of tMZL. This may aid in early identification of MZL patients with a high chance of transformation and formulating more appropriate treatment guidelines for these patients.

The main strength of this study is the use of a nationwide, population-based registry with data available on clinical characteristics and treatment at time of MZL and tMZL diagnosis. Limitations of this study mainly pertain to the lack of long-term follow-up of MZL patients, which could have prevented us from detecting transformations after four years. In addition, as a central pathology review was not possible due to the design of the study, there could be potential misclassification.

In conclusion, elevated LDH and nodal MZL subtype showed a higher risk of developing tMZL. Radiotherapy was associated with a reduced risk of developing tMZL compared to no treatment. tMZL patients treated with R-(mini)CHOP had a relatively favorable outcome, which was comparable to the outcome in de novo DLBCL. Age >60 years at tMZL diagnosis and prior (immuno) chemotherapy were identified as unfavorable prognostic factors after transformation. These findings can be used to optimize current patient management and clinical guidelines.

DATA AVAILABILITY

The data that support the findings of this study are available via IKNL. These data are not publicly available, and restrictions apply to the availability of the data used for

the current study. However, these data are available upon reasonable request and with permission of IKNL.

REFERENCES

- Alaggio R, Amador C, Anagnostopoulos I, Attygalle AD, Araujo IBO, Berti E, et al. The 5th edition of the World Health Organization classification of haematolymphoid tumours: lymphoid neoplasms. *Leukemia*. 2022;36:1720–48.
- Registry NC Netherlands Comprehensive Cancer Organisation (IKNL). 2022. <https://iknl.nl/nkr-cijfers>.
- Cerhan JR, Habermann TM. Epidemiology of marginal zone lymphoma. *Ann Lymphoma*. 2021;5:1.
- Kalashnikov I, Tanskanen T, Viisanen L, Malila N, Jyrkkö S, Leppä S. Transformation and survival in marginal zone lymphoma: a Finnish nationwide population-based study. *Blood Cancer J*. 2023;13:62.
- Maeshima AM, Taniguchi H, Toyoda K, Yamauchi N, Makita S, Fukuhara S, et al. Clinicopathological features of histological transformation from extranodal marginal zone B-cell lymphoma of mucosa-associated lymphoid tissue to diffuse large B-cell lymphoma: an analysis of 467 patients. *Br J Haematol*. 2016;174:923–31.
- Bastidas-Mora G, Beà S, Navarro A, Gine E, Costa D, Delgado J, et al. Clinicopathological features and outcome of patients with splenic marginal zone lymphoma with histological transformation. *Br J Haematol*. 2022;196:146–55.
- Rodrigues CD, Peixeiro RP, Viegas D, Chorão P, Couto ME, Gaspar CL, et al. Clinical characteristics, treatment and evolution of splenic and nodal marginal zone lymphomas-retrospective and multicentric analysis of portuguese centers. *Clin Lymphoma Myeloma Leuk*. 2021;21:e839–e44.
- Conconi A, Franceschetti S, Aprile von Hohenstaufen K, Margiotta-Casaluci G, Stathis A, Moccia AA, et al. Histologic transformation in marginal zone lymphoma. *Ann Oncol*. 2015;26:2329–35.
- Meyer AH, Stroux A, Lerch K, Eucker J, Eitle J, Hohloch K, et al. Transformation and additional malignancies are leading risk factors for an adverse course of disease in marginal zone lymphoma. *Ann Oncol*. 2014;25:210–5.
- Alderuccio JP, Zhao W, Desai A, Gallastegui N, Ramdial J, Kimble E, et al. Risk factors for transformation to higher-grade lymphoma and its impact on survival in a large cohort of patients with marginal zone lymphoma from a single institution. *J Clin Oncol*. 2018;36:1800138.
- Schouten LJ, Höppener P, van den Brandt PA, Knottnerus JA, Jager JJ. Completeness of cancer registration in Limburg, The Netherlands. *Int J Epidemiol*. 1993;22:369–76.
- World Health O. International classification of diseases for oncology (ICD-O). 1st revision ed. Geneva: World Health Organization; 2013. 3rd2013
- International Non-Hodgkin's Lymphoma Prognostic Factors Project. A predictive model for aggressive non-Hodgkin's lymphoma. *N Engl J Med*. 1993;329:987–94.
- Fine JP, Gray RJ. A proportional hazards model for the subdistribution of a competing risk. *J Am Stat Assoc*. 1999;94:496–509.
- Conconi A, Ponzio C, Lobetti-Bodoni C, Motta M, Rancoita PM, Stathis A, et al. Incidence, risk factors and outcome of histological transformation in follicular lymphoma. *Br J Haematol*. 2012;157:188–96.
- Alderuccio JP, Zhao W, Desai A, Ramdial J, Gallastegui N, Kimble E, et al. Short survival and frequent transformation in extranodal marginal zone lymphoma with multiple mucosal sites presentation. *Am J Hematol*. 2019;94:585–96.
- Cheah CY, Zucca E, Rossi D, Habermann TM. Marginal zone lymphoma: present status and future perspectives. *Haematologica*. 2022;107:35–43.
- Coiffier B, Lepage E, Briere J, Herbrecht R, Tilly H, Bouabdallah R, et al. CHOP chemotherapy plus rituximab compared with CHOP alone in elderly patients with diffuse large-B-cell lymphoma. *N Engl J Med*. 2002;346:235–42.
- Brink M, Kahle XU, Vermaat JSP, Zijlstra JM, Chamuleau M, Kersten MJ, et al. Impact of rituximab biosimilars on overall survival in diffuse large B-cell lymphoma: a Dutch population-based study. *Blood Adv*. 2021;5:2958–64.
- Guirguis HR, Cheung MC, Piliotis E, Spaner D, Berinstein NL, Imrie K, et al. Survival of patients with transformed lymphoma in the rituximab era. *Ann Hematol*. 2014;93:1007–14.
- Huisman F, Al-sarayfi D, Bellido M, Mous R, Vermaat JS, Kater AP, et al. P1170: incidence, treatment and outcome of patients with Richter's syndrome: a population-based cohort study in the Netherlands. *Hemasphere*. 2022;6:1056–7.
- Sindel A, Al-Juhaihi T, Yazbeck V. Marginal zone lymphoma: state-of-the-art treatment. *Curr Treat Options Oncol*. 2019;20:90.

ACKNOWLEDGEMENTS

The authors would like to thank the registrars of the NCR for their dedicated data collection. The nationwide, population-based registry is maintained and hosted by the Netherlands Comprehensive Cancer Organization (IKNL).

AUTHOR CONTRIBUTIONS

JB, MB, and MN designed, created the study, and wrote the manuscript. JB and MB performed the data analyses. MB and MN supervised the study, YZ, NM, JK, ST, JV, MC, AD, AvdB, and WB critically reviewed the manuscript. All authors approved the final manuscript.

COMPETING INTERESTS

ST received consultation fees from van Takeda, Incyte Biosciences, and Roche Pharma. MC received financial support for clinical trials from Celgene, Bristol-Myers Squibb, and Gilead. AD received research funding from Takeda. The remaining authors declare no competing financial interests.

ADDITIONAL INFORMATION

Supplementary information The online version contains supplementary material available at <https://doi.org/10.1038/s41408-023-00903-w>.

Correspondence and requests for materials should be addressed to Marcel Nijland.

Reprints and permission information is available at <http://www.nature.com/reprints>

Publisher's note Springer Nature remains neutral with regard to jurisdictional claims in published maps and institutional affiliations.



Open Access This article is licensed under a Creative Commons Attribution 4.0 International License, which permits use, sharing, adaptation, distribution and reproduction in any medium or format, as long as you give appropriate credit to the original author(s) and the source, provide a link to the Creative Commons license, and indicate if changes were made. The images or other third party material in this article are included in the article's Creative Commons license, unless indicated otherwise in a credit line to the material. If material is not included in the article's Creative Commons license and your intended use is not permitted by statutory regulation or exceeds the permitted use, you will need to obtain permission directly from the copyright holder. To view a copy of this license, visit <http://creativecommons.org/licenses/by/4.0/>.

© The Author(s) 2023