

**The Relationship between Male Genital Tract Infection,
Oxidative Status in the Ejaculate, and Apoptotic Markers in
Human Spermatozoa**

by

Cleyson Mupfiga

Submitted in partial fulfillment of the requirements of the
degree of

Master of Science



Department of Medical Biosciences
UNIVERSITY of the
WESTERN CAPE
University of the Western Cape

Bellville

Supervisor

Professor Ralf Henkel

Co-Supervisors

Professor Gerhard van der Horst and Dr David Fisher

May 2009

ABSTRACT

Aim: Leukocytes are the major source of reactive oxygen species (ROS) in the ejaculate and contribute to up to 30% of male infertility. ROS have been associated with markers of apoptosis such as sperm DNA damage, externalization of phosphatidylserine and caspase-3 activation. Therefore, this study aimed at investigating the impact male genital tract infections/inflammations on the induction of apoptosis in spermatozoa.

Materials and Methods: Semen samples were obtained from 60 men consulting for fertility problems at the Reproductive Biology Unit, University of Stellenbosch at Tygerberg Academic Hospital, and Vincent Pallotti Hospital (Cape Town, South Africa). To investigate the relationship between male genital tract infection and sperm apoptosis, the following were measured: semen parameters including sperm count, motility and forward progression; oxidative status in the ejaculate by evaluating the concentration of seminal leukocytes, ROS production in the ejaculate, generation of O_2^{\bullet} and H_2O_2 by spermatozoa, and the activity of reduced glutathione (GSH) in sperm; sperm apoptotic markers by measuring mitochondrial membrane potential ($\Delta\psi_m$), caspase-3/7 activation, and DNA fragmentation (TUNEL).

Results: The concentration of seminal leukocytes had a significant positive correlation with ROS production in the ejaculate ($\rho=0.378$; $P=0.0064$), sperm O_2^{\bullet} production ($\rho=0.336$; $P=0.0098$), and caspase-3/7 activation in sperm ($\rho=0.527$; $P<0.0001$). Furthermore, at the cutoff value of $\geq 0.25 \times 10^6$ leukocytes/mL of semen, the concentration of peroxidase-positive cells correlated significantly with sperm GSH activity ($\rho=0.718$; $P=0.008$), the percentage of sperm with disrupted $\Delta\psi_m$ ($\rho=0.465$; $P=0.043$), caspase-3/7 activation in sperm ($\rho=0.794$; $P=0.001$), and the percentage of sperm with fragmented DNA ($\rho=0.563$; $P=0.017$). ROS production in the ejaculate, besides the association with seminal leukocytes, was also correlated with the sperm count ($\rho= -0.296$; $P=0.033$), sperm GSH activity ($\rho=0.577$; $P<0.0001$), caspase-3/7 activation in sperm ($\rho=0.487$; $P=0.0005$), and sperm DNA fragmentation ($\rho=0.331$; $P=0.0171$). Caspase-3/7 activation was strongly correlated with oxidative stress in both, the ejaculate and in spermatozoa; although this parameter was not correlated with sperm $\Delta\psi_m$ and DNA fragmentation. Sperm O_2^{\bullet} , which had a link

with seminal leukocyte concentration, was significantly correlated to sperm $\Delta\psi_m$ ($P=0.0098$), as was sperm GSH activity ($P=0.0055$). Sperm DNA fragmentation was positively correlated with ROS in the ejaculate and sperm H_2O_2 -production ($P=0.039$).

Conclusions: Excessive ROS in the ejaculate, mainly a consequence of seminal leukocytes, is not only linked to internal generation of $O_2^{\cdot-}$, but also to sperm DNA fragmentation and the activation of effector caspases. Moreover, even in non-leukocytospermic patients with $\geq 0.25 \times 10^6$ leukocytes/mL of semen, oxidative stress can occur which can trigger apoptosis, caspase-3/7 activation, and induce sperm DNA fragmentation. Therefore, it is possible that male genital tract infection, the major cause of leukocyte infiltration in the male reproductive tract, can induce apoptosis, of which the observed sperm DNA fragmentation is a late feature.



Declaration

I, the undersigned, hereby declare that '*The Relationship between Male Genital Tract Infection, Oxidative Status in the Ejaculate, and Apoptotic Markers in Human Spermatozoa*' is my own work, and has not been previously submitted, in its entirety or in part, for any degree or examination in any other university, and that all the sources I have used quoted have been indicated and acknowledged by complete references.

Cleyson Mupfiga



Signed: _____

Acknowledgements

“If I have seen further, it is by standing on the shoulders of giants”

Sir Isaac Newton (1643-1727)

Professor Ralf Henkel: I have been fortunate to receive the guidance and encouragement of an excellent scholar and patient instructor; to you I would like to express my deep gratitude.

Dr David Fisher, Professor Gerhard van der Horst, Professor Jan van Bever Donker and Dr Roelof Menkveld: this would not have been possible without your support; for that I am much obliged.

Callista, Justine, Memory, Climate and Mbuya Joy: you have loved, fed, clothed, sheltered, and encouraged me all the way; what I owe you is beyond measure. Thank you.

Warren, Randall and Farzana, Tasnim, Sylvia, and Nicole Haines: thank you for all the laughs, rides, surprises, and all the things that brought a smile to my face, and made this place feel like home.

Robertha Isaacs, Shamieg Allie, Koffi Kouame, Charlene Davids, Nicola Louw, Evelyn Erasmus, Dr Marie-Lena Windt, and the staff at Tygerberg and Vincent Pallotti hospitals: you made this work much easier to accomplish; many thanks.

My wife, Chido: you have sacrificed more than I have for this dream to come true; and through it all, you have loved and encouraged me. I dedicate this thesis to you, and I thank the Lord for bringing you into my life.

TABLE OF CONTENTS

Title Page		i
Abstract		ii
Declaration		iv
Acknowledgements		v
Table of Contents		vi
Chapter One: Introduction		1
1.1	Background	1
1.2	Reactive Oxygen Species	2
1.3	ROS production by Spermatozoa	6
1.4	ROS production by Leukocytes	6
1.5	Antioxidants	9
1.6	Oxidative Stress and Sperm DNA damage	12
1.7	Male Genital Tract Infection and Oxidative Stress	15
1.8	Apoptosis	18
1.9	Aim of the Study	21

Chapter Two: Materials and Methods	22	
2.1	Sample Collection	23
2.2	Conventional Semen Analysis	23
2.3	Oxidative Status in the Ejaculate and in Spermatozoa	24
2.3.1	Concentration of Seminal Leukocytes	24
2.3.2	Measurement of ROS production in the Ejaculate	25
2.3.3	Measurement of Hydrogen Peroxide in Spermatozoa	26
2.3.3.1	2,7-Dihydrofluorescein diacetate	26
2.3.3.2	Amplex UltraRed™ and Horseradish Peroxidase	27
2.3.4	Measurement of Superoxide Anion in Spermatozoa	28
2.3.5	Measurement of Reduced Glutathione (GSH) activity in Sperm	29
2.4	Sperm Apoptotic Markers	30
2.4.1	Determination of the Integrity of the MMP ($\Delta\psi_m$)	30
2.4.2	Measurement of Caspase-3/7 activation in Sperm	31
2.4.3	Measurement of Sperm DNA Fragmentation	32
2.5	Statistical Analysis	33

Chapter Three: Results	35
3.1 Summary Statistics	35
3.2 Semen Parameters	35
3.3 Oxidative Status in the Ejaculate and in Spermatozoa	35
3.3.1 Peroxidase-positive Leukocytes	35
3.3.2 ROS production in the Ejaculate	42
3.3.3 The percentage of H ₂ O ₂ -positive Sperm	43
3.3.4 The percentage of O ₂ ^{-•} -positive Sperm	48
3.3.5 GSH activity in Sperm	50
3.4 Sperm Apoptotic Markers	51
3.4.1 The percentage of $\Delta\psi_m$ -negative Sperm	51
3.4.2 Caspase-3/7 activation in Sperm	53
3.4.3 The percentage of TUNEL-positive Sperm	54

Chapter Four: Discussion	57
4.1 Conventional Semen Parameters	57
4.2 Oxidative Status in the Ejaculate and in Sperm	58
4.2.1 Peroxidase-positive Leukocytes	58
4.2.2 Cutoff Values for Leukocytospermia	60
4.2.3 ROS production in the Ejaculate and in Sperm	61
4.2.4 GSH activity in Sperm	63
4.3 Apoptotic Markers in Spermatozoa	64
4.3.1 Disruption of the MMP ($\Delta\psi_m$)	64
4.3.2 Caspase-3/7 activation in Sperm	65
4.3.3 Sperm DNA Fragmentation	66
4.4 Conclusion and Future Outlook	68
Chapter Five: References	71



CHAPTER ONE

INTRODUCTION

1.1 Background

Infertility is defined as the failure of a couple to induce pregnancy after one year of regular unprotected intercourse during the fertile phase of the menstrual cycle (Nieschlag et al. 2000; Evers, 2002). This inability to conceive affects up to 15% of all couples of reproductive age (Bruckert, 1991; Juul et al., 1999; Boivin et al., 2007) and in up to half of these cases the male partner is responsible for the infertility (Hull et al., 1985; de Kretser and Baker, 1999). Therefore, about 7% of men may have impaired fertility during the course of their lives (Purvis and Christiansen, 1992; Nieschlag et al., 2000); a prevalence that apparently exceeds that of diabetes mellitus which is considered to be a common condition (Nieschlag et al., 2000; Wild et al., 2004). Moreover, human semen quality seems to have progressively declined over the past few decades (Carlsen et al., 1992; Auger et al., 1995; van Waeleghem et al., 1996; Skakkebaek, 2006). Considering that up to 50% of the cases of male infertility are classified as idiopathic (Sherins, 1995), it is clear that the aetiology of male infertility is poorly understood and, consequently, there are limited interventions to address its causes and prevent its onset. Therefore, despite the successes of assisted reproductive techniques (ART) such as *in vitro* fertilization (IVF) and intracytoplasmic sperm injection (ICSI), it remains imperative to investigate the causes and understand the mechanisms of infertility in the human male.

Investigations of male infertility begin with a semen analysis which provides descriptive information on the numbers of sperm present in the ejaculate, the proportion that are motile, and the percentage that are morphologically normal (WHO, 1999). Many studies have clearly demonstrated that the probability of conception is related to sperm motility (Alper et al., 1985; Ron-el et al., 1991; Robinson et al., 1994), sperm concentration (Biljan et al., 1994; Calvo et al., 1994) and morphology (Kruger et al., 1986, 1987; Kobayashi et al., 1991; Menkveld et al., 1996). However, many men who demonstrate normal parameters on standard semen

analysis remain unable to induce pregnancy (Hull et al., 1985; WHO, 1992; Baker, 1994). This suggests that conventional semen analysis does not provide complete diagnostic information. Furthermore, many studies show that it is not so much the absolute number of sperm that determines fertility, but their functional competence *in vitro* such as the ability to penetrate cervical mucus (Eggert-Kruse et al., 1989; Sharara et al., 1995), capacitation (Sukcharoen et al., 1995), acrosome reaction or sperm-oocyte fusion (Liu and Baker, 2000; 2003). Indeed, defective sperm function is recognized as a major cause of the loss of fertilizing potential in infertile men (Hull et al., 1985; McLachlan and de Kretser, 2001). In the proposed mechanism for the loss of sperm function, oxidative damage may play a key role (Alvarez et al., 1987; Iwasaki and Gagnon, 1992, Aitken, 1994) and evidence now suggests that the damage to sperm, caused by oxygen-derived oxidants called reactive oxygen species, is a significant contributing factor in up to 30% of the cases of male infertility (Iwasaki and Gagnon, 1992; Ochsendorf et al., 1994; Shekarriz et al., 1995).

Infection of the male genital tract is a known major cause of the generation of reactive oxygen species (ROS) in the human ejaculate (Comhaire et al., 1999; Ochsendorf, 1999), and it has been strongly associated with sperm damage and male infertility (Fraczek and Kurpisz, 2007; Tremellen, 2008). The following review discusses the generation of ROS in the ejaculate and their role in the pathology of human sperm, with particular interest in the relationship between male genital tract infection and the mechanisms of sperm damage.

1.2 Reactive Oxygen Species

Reactive oxygen species (ROS) are byproducts of the metabolism of oxygen by cells and they include free radicals and peroxides (Valko et al., 2007). The most common ROS that have effects on human reproductive biology include the superoxide anion ($O_2^{\cdot-}$), hydrogen peroxide (H_2O_2), peroxy radicals ($ROOH^{\cdot}$), and the hydroxyl radical (OH^{\cdot}) (de Lamirande et al., 1997). Free radicals are molecules that have one or more unpaired electrons in their outer orbitals. The unpaired electrons confer a high oxidative potential to these ROS and a short half-life of nanoseconds, which means they practically react at the site of generation. As a consequence of their high reactivity, free radicals readily take part in the oxidation of biomolecules such as

lipids, proteins, nucleic acids and hyaluronic acid, and this oxidative damage is a key component of pathological processes such as inflammation, carcinogenesis and ageing (Halliwell and Gutteridge, 1989; Sies, 1991; Fuchs et al., 1997). The most commonly produced free radicals are illustrated in Table 1.

Non-radical ROS that are either oxidizing agents or easily converted into free radicals include hydrogen peroxide (H_2O_2) and hypochlorous acid (HOCl). Hydrogen peroxide is uncharged and, unlike the $\text{O}_2^{\cdot-}$ anion and other free radicals, it can cross cell membranes. Perhaps its most damaging quality is that it can be split into the very dangerous OH^{\cdot} radical when it accepts an electron from ferrous or cuprous ions in a reaction known as Fenton reaction (Table 1) (Ochsendorf, 1999). In addition, hydrogen peroxide is a major secretory product of white blood cells (Klebanoff and Clark, 1978), and these cells are a feature of male genital tract infection. Table 2 describes the most common non-radical ROS; hydrogen peroxide and hypochlorous acid.



Table 1: Reactive oxygen species: most common free radicals.

Species	Generation	Half-life	Distance ^ψ	Effect
Hydroxyl radical (OH[•])	<p>Metal ion-dependent breakdown of hydrogen peroxide.</p> <p>Fenton reaction:</p> $\text{H}_2\text{O}_2 + 1\text{e}^-(\text{Fe}^{2+}/\text{Cu}^+) \rightarrow \text{Fe}^{3+}/\text{Cu}^{2+} + \text{OH}^{\bullet} + \text{OH}^{\bullet}$ <p>Haber-Weiss reaction:</p> $\text{O}_2^{\bullet-} + \text{H}_2\text{O}_2 \rightarrow \text{O}_2 + \text{H}_2\text{O} + \text{OH}^{\bullet}$	0.3ns	1.8nm	Very strong oxidant; responsible for initiation of lipid peroxidation and protein oxidation.
Superoxide anion (O₂^{•-})	<p>In mitochondria and endoplasmic reticulum during electron transport; first intermediate in the reduction of molecular O₂ by the respiratory chain.</p> $\text{O}_2 + 1\text{e}^- \rightarrow \text{O}_2^{\bullet-}$ <p>Generated through NADPH oxidase during phagocytosis.</p> $\text{NADPH} + 2\text{O}_2 \rightarrow \text{NADP}^+ + \text{H}^+ + 2\text{O}_2^{\bullet-}$	0.4μs-1ms	55nm-3μm	Reducing or oxidizing dependent on the redox properties of its reactant; dismutates to hydrogen peroxide.

^ψ distance ROS can travel.

Table 2: Reactive oxygen species: most common non-radical oxidants.

Species	Generation	Half-life	Distance ^ψ	Effect
Hydrogen peroxide (H₂O₂)	Mitochondria during oxidative phosphorylation; in peroxisomes in fatty acid metabolism; by-product of SOD-catalyzed dismutation. $2 O_2^{\cdot-} + 2 H^+ \rightarrow H_2O_2 + O_2$	Persistent		Very strong oxidant; responsible for initiation of lipid peroxidation and protein oxidation.
Hypochlorous acid (HOCl)	$H_2O_2 + Cl^- \rightarrow HOCl + OH^-$ (hypochlorous acid formation) $HOCl + O_2^{\cdot-} \rightarrow O_2 + Cl^- + OH^{\cdot}$ or $HOCl + Fe^{2+} \rightarrow Fe^{3+} + Cl^- + OH^{\cdot}$ (hydroxyl formation) Activated neutrophils in response to infectious agents; reaction is catalyzed by peroxidase-myeloperoxidase (MPO); reacts with O ₂ ^{·-} to form more ROS.	Persistent		Highly toxic with detrimental effects for neighboring cells; able to degrade biomolecules either directly or by decomposition into chlorine.

^ψ distance ROS can travel; **SOD** superoxide dismutase.

1.3 ROS production by Spermatozoa

Spermatozoa, like all cells living under aerobic conditions, produce ROS mostly as products of normal metabolism. These ROS, mostly free radicals, are produced in mitochondria during a stepwise reduction of oxygen to generate energy. However, mitochondria are not the only source of ROS in the mammalian germ line. Immature sperm are reported to generate significantly higher levels of ROS (Gil-Guzman et al., 2001; Ollero et al., 2001; Moustafa et al., 2004). This is because immature sperm are often characterized by the presence of excess cytoplasmic residues around the midpiece region (Aitken, 1999) and these residues are rich in the enzyme glucose-6-phosphate dehydrogenase, an enzyme which controls the intracellular production of β -nicotinamide adenine dinucleotide phosphate (NADPH) through the hexose monophosphate shunt. NADPH fuels the generation of ROS via the NADPH oxidase which is located in the plasma membrane (Gomez et al., 1996; Fisher and Aitken, 1997).

However, even normal human sperm are thought to have a sperm-specific and calcium-dependant NADPH oxidoreductase that is located in the mitochondrial respiration system in the sperm midpiece (Banfi et al., 2001; Armstrong et al., 2002) which produces ROS. Other ROS-generating systems that have been described in mammalian sperm include lipoxigenase (Oliw and Sprecher, 1989) and cytochrome P450 (Baker et al., 2004).

1.4 ROS production by Leukocytes

Sperm are not the only source of ROS in seminal plasma. White blood cells (leukocytes) are the major source of free radicals in the ejaculate and they are reported to produce up to 1000 times more ROS than sperm (Plante et al., 1994; de Lamirande and Gagnon, 1995). Leukocytes, which are attracted by pathogens and tissue damage to the site of infection, release 'bursts' of the highly aggressive ROS as a first-line of defence against invading organisms (Klebanoff and Clark, 1978; Depuydt et al., 1996). However, even under physiological conditions, these immune cells are a common feature of most parts of the male reproductive tract and the ejaculate (Aitken et al., 1994; Aitken and Baker, 1995), of which 50-60% are

polymorphonuclear granulocytes, 20-30% are monocytes, and 2-5% are lymphocytes (Wolff and Anderson, 1988; Wolff, 1995).

The presence of leukocytes in the ejaculate is not pathological in itself. The mean number of leukocytes in the seminal fluid of healthy men has been reported to be 17×10^6 /mL of semen (Wolff and Anderson, 1988). According to the World Health Organization (WHO, 1999), a condition in which the concentration of leukocytes in the ejaculate is greater than 1×10^6 cells/mL is defined as leukocytospermia. This is generally considered as a clinical sign of infection or inflammation of the accessory sex organs, or of the lower genitourinary tract (Wolff and Anderson, 1988; Barratt et al., 1990). However, this value is empirical (Aitken and Baker, 1995) and was regarded as too high by some authors (Menkveld and Kruger, 1998; Sharma et al., 2001; Punab et al., 2003; Henkel et al., 2005).

The role played by leukocytes in semen is subject to much controversy (Wolff, 1995). As the production of ROS is one of the principal mechanisms by which white blood cells destroy pathogens, it is not surprising that seminal leukocytes have been associated with excessive generation of ROS in the ejaculate (Aitken et al., 1994; Whittington et al., 1999; Sharma et al., 2001; Henkel et al., 2003a; 2005). Furthermore, the production of ROS by leukocytes in the ejaculate is non-specific, and leukocytospermia has been associated with poor sperm morphology (Menkveld and Kruger, 1998; Menkveld et al., 2003), increased abnormalities of the sperm midpiece (Thomas et al., 1997), and decreased sperm motility (Diemer et al., 2003a). However, some studies have found no significant negative influence of seminal leukocytes on semen quality or sperm function (Christiansen et al., 1991; Tomlinson et al., 1992; 1993; Rodin et al., 2003).

In addition, the activation status of leukocytes appears to have an important influence on ROS production in the ejaculate (Tremellen, 2008). The activation of leukocytes is regulated by peptides called cytokines that are produced by leukocytes and other cells to influence the growth, differentiation or function of cells via autocrine or paracrine mechanisms (Ochsendorf, 1999). Recent data suggest that cytokines and ROS may interact and bring about the toxic effects of infection/inflammation in the male genital tract (Tremellen, 2008). This is supported by the positive correlation observed between seminal ROS and pro-inflammatory cytokines such as interleukin-6

(Camejo et al., 2001; Nandipati et al., 2005), interleukin-8 (Rajasekaran et al., 1995; Martinez et al., 2007), and tumour necrosis factor (Sanocka et al., 2003; Martinez et al., 2007). Interleukin-1 is reported to stimulate granulocytes and macrophages to produce ROS and secrete other cytokines (Depuydt et al., 1998), while interleukin-8 is thought to exert a negative effect on sperm fertilizing potential (Rajasekaran et al., 1995). Interleukin-8 has also been considered to be a potential marker for male genital tract infection (Koumantakis et al., 1998).

Other possible mechanisms of the development of infection-related infertility are: obstruction of the seminal tract (Keck et al., 1998), deterioration of spermatogenesis (Diemer et al., 2003b; Fraczek et al., 2007), and dysfunction of the accessory glands (Comhaire et al., 1999). These mechanisms are strongly associated with leukocytospermia, in general, and the high production of ROS by the seminal leukocytes, in particular (Berger et al., 1982; Sharma et al., 2001; Henkel et al., 2005).

The basic method of detecting leukocytes in semen samples is by direct observation with a bright field microscope (Menkveld and Kruger, 1998; Menkveld et al., 2003). However, this method is inadequate because it does not distinguish between leukocytes and immature germinal epithelial cells (Wolff, 1995). Hence, other techniques that differentiate leukocytes from germ cells such as the Papanicolaou method (Menkveld and Kruger, 1998), monoclonal antibodies (WHO, 1999), and polymorphonuclear elastase (Henkel et al., 2007), are considered to be reliable. However, the peroxidase stain (Endtz test) is more suitable for routine use (Wolff, 1998) because it is less time consuming and not labour intensive. Furthermore, the peroxidase stain allows for the detection of polymorphonuclear granulocytes and its results are strongly correlated to ROS production in semen (Shekarriz et al., 1995).

1.5 Antioxidants

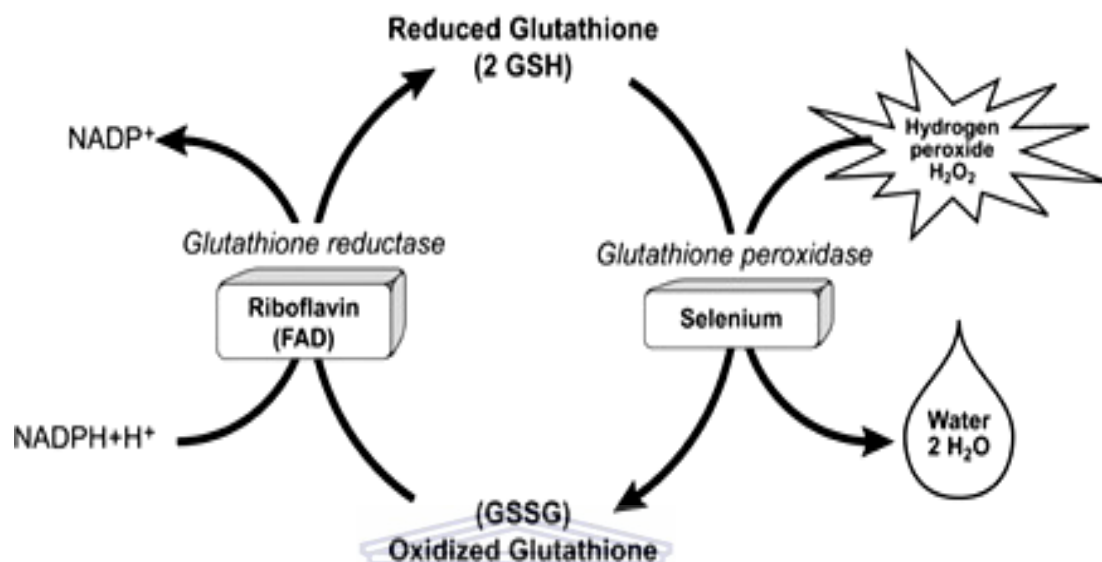
The human body has developed several antioxidant strategies to protect itself from cellular damage induced by ROS (Sies, 1991). Antioxidants are compounds that scavenge, suppress the formation of ROS, and oppose their actions (Sikka et al., 1995). This allows for normal oxidative metabolism to occur without damage to the cells, while still allowing for normal ROS-mediated cellular responses such as destruction of infectious pathogens and intracellular signaling (Valko et al., 2007). Antioxidants play a significant protective role in reproductive biology and among the well-known enzymatic antioxidants are superoxide dismutase (SOD) and catalase which inactivate the $O_2^{\cdot -}$ radical and H_2O_2 by converting them into water and oxygen (Table 3). SOD is present within both sperm and seminal plasma (Zini et al., 1993) while catalase is lacking in spermatozoa (Alvarez and Storey, 1992). The addition of SOD to sperm in culture has been confirmed to protect the sperm from oxidative attack (Kobayashi et al., 1991), and its deficiency has been reported in infertile men (Sanocka et al., 1997; Pasqualotto et al., 2000). However, other authors have found no significant differences in SOD activity between infertile men and their fertile counterparts (Zini et al., 2000; Hsieh et al., 2002). Although catalase is only found in seminal plasma, the reported evidence supports a link between reduced seminal catalase activity and male infertility (Miesel et al., 1997; Sanocka et al., 1997; Zini et al., 2000).

Table 3: Enzymatic antioxidants: superoxide dismutase and catalase.

Enzyme	Reaction
Superoxide dismutase (SOD)	$2 \text{O}_2^{\cdot-} + 2\text{H}^+ \rightarrow \text{H}_2\text{O}_2 + \text{O}_2$ <p>Superoxide dismutase can have 3 isoforms: cytosolic copper/zinc superoxide dismutase (Cu/ZnSOD), intra-mitochondrial manganese superoxide dismutase (MnSOD), and extracellular Cu/Zn SOD. Cytosolic SOD constitutes the major proportion of total SOD activity and probably is responsible for removing $\text{O}_2^{\cdot-}$ radicals from the cytosol. MnSOD is responsible for removing $\text{O}_2^{\cdot-}$ generated by oxidative metabolism in the mitochondria.</p>
Catalase	$2 \text{H}_2\text{O}_2 \rightarrow 2\text{H}_2\text{O} + \text{O}_2$ <p>Catalase is a hydrogen peroxide detoxifier; removes this membrane permeable molecule from the media and inhibits NADPH oxidase and thus inhibits superoxide production.</p>

Glutathione peroxidase (GPx) is another important enzymatic antioxidant. This antioxidant is found in the testis, prostate, seminal vesicles, vas deferens, epididymis, seminal plasma and spermatozoa (Vernet et al., 2004). GPx, using reduced glutathione (GSH; L- γ -glutamyl-L-cysteinyl-glycine) as an electron donor, protects sperm against ROS attack and its inhibition, *in vivo*, using mercaptosuccinate leads to a large increase in sperm lipid peroxidation (Twigg et al., 1998). Male infertility has been associated with a reduction of GPx in seminal plasma (Giannattasio et al., 2002) and spermatozoa (Garrido et al., 2004). Furthermore, men with excessive seminal ROS production that is caused by leukocytospermia, have demonstrated significantly reduced GPx activity within their spermatozoa (Therond et al., 1996). Therefore, reduced glutathione is necessary to detoxify oxidants and free radicals in sperm, and a high cellular concentration of GSH is maintained by the enzyme glutathione reductase

which catalyzes the reduction of oxidized glutathione (GSSG) (Ochsendorf et al., 1998), as illustrated in Figure 1.



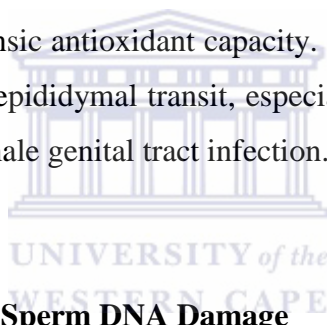
(From: <http://lpi.oregonstate.edu/infocenter/vitamins/riboflavin/ribogsh.jpg>)

Figure 1 One molecule of hydrogen peroxide (H_2O_2) is reduced to two molecules of water while two molecules of reduced glutathione (GSH) are oxidized in a reaction catalyzed by glutathione peroxidase (a selenium-dependent enzyme). Oxidized glutathione (GSSH) is recycled by the flavin adenine dinucleotide (FAD)-dependent enzyme, glutathione reductase, using NADPH which itself is regenerated in a reaction catalyzed by glucose-6-phosphate dehydrogenase in the hexose monophosphate shunt. The restored GSH is ready to detoxify more H_2O_2 . When the antioxidant system is functioning properly, most of its components are present in the reduced form; H_2O , GSH and NADP^+ . If there is a malfunction, then the oxidized components (H_2O_2 , GSSG and NADPH) tend to accumulate.

Besides the enzymatic antioxidants, small molecules that are present in semen act as ROS scavengers, and these include ascorbic acid (vitamin C), α -tocopherol (vitamin E), amino acids (taurine and hypotaurine), albumin and carnitine (Tremellen, 2008). These agents principally act to directly neutralize free radical activity. A number of

researchers have reported a significant reduction in the activity of non-enzymatic antioxidants in the seminal plasma of infertile men (Fraga et al., 1991, 1996; Smith et al., 1996; Therond et al., 1996; Lewis et al., 1997; Mostafa et al., 2006; Song et al., 2006).

The antioxidant capacity of spermatozoa is insufficient by virtue of the limited volume and the distribution of sperm cytoplasmic space. Therefore, antioxidants in the seminal plasma are essential in protecting sperm from oxidative attack. This is evident in the increased ROS production in washed sperm, especially in preparation for assisted reproductive techniques (Plante et al., 1994; Twigg et al., 1998). Furthermore, repeated centrifugation separates spermatozoa from seminal plasma and this leads to a 20- to 50-fold increase in levels of ROS (Aitken and Clarkson, 1987; Iwasaki and Gagnon, 1992). However, during spermatogenesis and epididymal storage, sperm are not in contact with seminal antioxidants and must rely on epididymal and their intrinsic antioxidant capacity. Sperm are therefore vulnerable to oxidative damage during epididymal transit, especially in the presence of epididymal inflammation caused by male genital tract infection.



1.6 Oxidative Stress and Sperm DNA Damage

As described above, aerobic metabolism entails the production of ROS even under basal conditions. Hence, there is a continuous requirement for the inactivation of these ROS (Sies, 1991). However, at physiological concentrations, ROS are beneficial to normal sperm function, and they are associated with sperm capacitation and hyperactivation (de Lamirande and Gagnon, 1993; Aitken and Fisher, 1994; de Lamirande et al., 1997), thereby assisting sperm in their transit through the cumulus and zona pellucida. It is obvious, then, that in the male reproductive system, a balance has to be maintained between the generation of ROS and their scavenging by the battery of antioxidants in the seminal plasma and in the sperm (Alvarez et al., 1987; Halliwell and Gutteridge, 1989; Sikka et al., 1995). However, increased ROS production or deficient antioxidant protection causes this balance to shift in favour of oxidants, potentially leading to cellular or genetic damage - this condition is called 'oxidative stress'.

The underlying mechanism of sperm damage, which is induced by oxidative stress, is peroxidation of the sperm plasma membrane (Jones et al., 1979). The plasma membrane of human sperm is particularly vulnerable to ROS attack because it has an exceptionally high content of polyunsaturated fatty acids (Alvarez et al., 1987; Zalata et al., 1998). The ROS-induced peroxidation reduces sperm membrane fluidity and tail motion and, therefore, less sperm reach the oocyte for fertilization (Whittington et al., 1999; Kao et al., 2008). Moreover, ROS not only damage the sperm membrane, but are also known to attack the sperm genome (Twigg et al., 1998).

Several investigators have directly linked ROS production to sperm nuclear DNA damage (Kodama et al., 1997; Lopes et al., 1998; Saleh et al., 2002a; Wang et al., 2003; Henkel et al., 2005). Normally, sperm DNA is tightly packaged by protamines and this protects its purine and pyrimidine bases and the deoxyribose backbone from free radical attack (Ward and Coffey, 1991). However, this protamination is deficient in some infertile men (Balhorn et al., 1988; Aoki and Carrell, 2003; Oliva, 2006), and their sperm DNA is exposed to ROS-induced oxidation. Furthermore, DNA damage is significantly greater in leukocytospermic semen samples (Alvarez et al., 2002; Henkel et al., 2003a; 2003b) and in infertile men who may have reduced antioxidant protection (Pasqualotto et al., 2000).

The negative impact of sperm DNA fragmentation on fertilization and pregnancy has been repeatedly and clearly demonstrated (Figure 2). Sperm DNA damage was associated with poor motility and abnormal morphology (Huang et al., 2005; Sergerie et al., 2005), and reduced acrosome reaction (Ozmen et al., 2007). Furthermore, high incidence of sperm DNA fragmentation has been observed among couples with unexplained infertility and recurrent pregnancy failure (Host et al., 2000; Carrell et al., 2003). This negative influence of sperm nuclear DNA damage has been demonstrated for intrauterine insemination (IUI) (Duran et al., 2002) and *in vitro* fertilization (IVF) (Henkel et al., 2004). Even in natural conception, oxidative sperm DNA damage adversely affects human fertility and prolongs the time to pregnancy (Spanò et al., 2000; Loft et al., 2003). Despite this, there is evidence to suggest that sperm with fragmented DNA are still able to fertilize an oocyte but further development stops once the defective paternal genome is switched on, resulting in failed pregnancy (Twigg et al., 1998; Ahmadi and Ng, 1999; Henkel et al., 2004). Fragmented DNA appears to cause of poor embryo quality, poor blastocyst

development and even early embryo death (Tomsu et al., 2002; Zorn et al., 2003; Seli et al., 2004; Meseguer et al., 2008). Assisted reproductive techniques, such as intracytoplasmic sperm injection (ICSI), circumvent natural barriers to fertilization and allow sperm with damaged DNA to achieve blastocyst formation and even full-term pregnancy (Gandini et al., 2004). However, there is rising concern that the genetic damage may be transmitted to the offspring, causing chromosomal abnormalities, birth defects, childhood cancer (Aitken and Krausz, 2001; Aitken and De Iuliis, 2007), and even infertility (Silber and Repping, 2002).

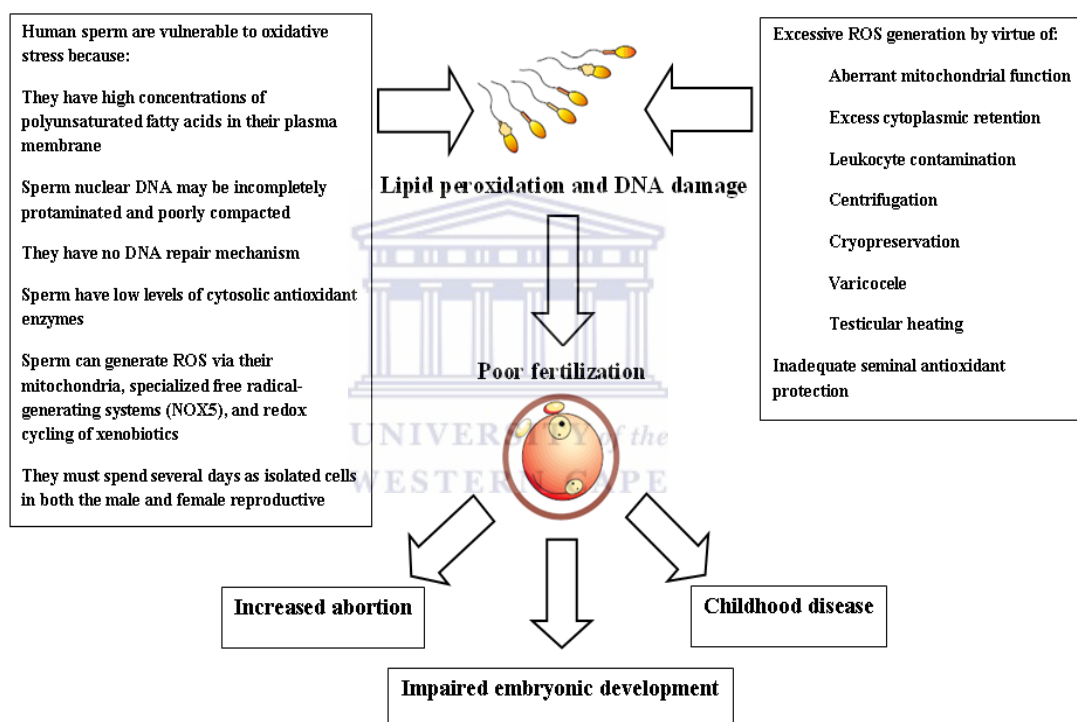
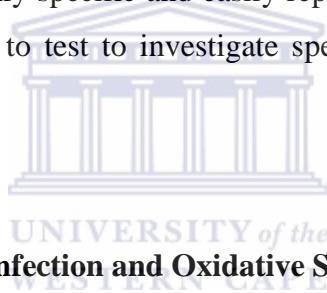


Figure 2 An assortment of factors can conspire to induce oxidative stress and nuclear DNA damage in spermatozoa emerging from the male reproductive tract. Studies have demonstrated the consequences of damage to the male genome, and these include infertility, poor blastocyst formation and embryo development, and increased abortion. Moreover, there is rising concern that genetic damage may be transmitted to the offspring and may cause childhood disease such as cancer. (Adapted from Aitken and Krausz, 2001).

Several investigators have confirmed the damaging effect of oxidative stress on the sperm genome (Kodama et al., 1997; Aitken et al., 1998; Saleh et al., 2002a; Wang et al., 2003; Moustafa et al., 2004; Henkel et al., 2005). Furthermore, studies show that sperm DNA damage is predictive of fertilization and pregnancy after natural conception and following the use of assisted reproduction such as IUI (Duran et al., 2002), IVF (Host et al., 2000; Henkel et al., 2004), and ICSI (Lopes et al., 1998; Henkel et al., 2003b; Tesarik et al., 2004). For these reasons, various authors have suggested that tests for DNA integrity or damage should be introduced into the routine andrological work-up (De Jonge, 2002; Perreault et al., 2003; Sharma et al., 2004; Tesarik et al., 2004; Henkel et al., 2005). A number of tests have been developed to assess sperm DNA damage, and these include sperm chromatin structure assay (SCSA), terminal deoxynucleotide transferase-mediated dUTP nick-end labelling (TUNEL) assay, and measurement of 8-hydroxydeoxyguanosine (8-OHdG). The TUNEL assay is highly specific and easily reproducible and, therefore, is one of the most frequently used to test to investigate sperm DNA fragmentation (Henkel, 2007).

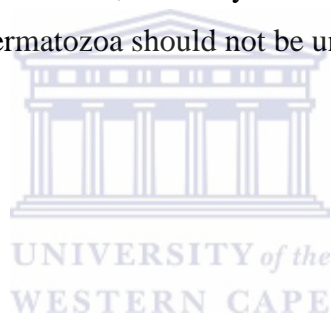


1.7 Male Genital Tract Infection and Oxidative Stress

The causes of oxidative stress are manifold (Figure 2). They include smoking (Fraga et al., 1996), excessive alcohol consumption (Maneesh et al., 2006), environmental pollution (Chitra et al., 2001); chronic systemic disease (Oberg et al., 2004; Agbaje et al., 2007), and infection (Mazzilli et al., 1994; Depuydt et al., 1996; Ochsendorf, 1999; Potts et al., 2000; Brackett et al., 2008). Among the latter, male genital tract and accessory gland infections play a significant, and yet potentially correctable, role in male infertility (Cunningham and Beagley, 2008; Pellati et al., 2008; Schuppe et al., 2008; Tremellen, 2008). The prevalence of infertility that is related to male genital tract infection varies from 10% to 20% in randomly selected subjects (WHO, 1999), and up to 35% in a study of over 4000 patients consulting for infertility (Henkel et al., 2007). Reportedly, up to 50% of men suffer from prostatitis at some point in their lives, with the condition becoming chronic in 10% of men (Schaeffer, 2003). The majority of these infections are self-limiting (Weidner et al., 1999), and

the men do not present with clear symptoms of genital tract infection (Gonzales et al., 2004), so most these men will not seek treatment.

In male genital tract infection, activated leukocytes generate excessive ROS and secrete cytokines that have been negatively correlated with fertility (Depuydt et al., 1998) and semen quality (Eggert-Krause et al., 2001). The highly oxidant ROS cocktail released by leukocytes, such as OH^\bullet , $\text{O}_2^{\bullet-}$ and the persistent H_2O_2 , can induce lipid peroxidation (Zalata et al., 1998) and substantial sperm DNA fragmentation (Alvarez et al., 2002), especially in infertile patients with deficient antioxidant capacity (Pasqualotto et al., 2000). It is also worth considering that, in cases of longstanding male genital tract infection and inflammation such as orchitis, epididymitis (Weidner et al., 1999), and even prostatitis (Henkel et al., 2006), spermatozoa are exposed to activated leukocytes and their products for long periods during their maturation. Therefore, causality between leukocytes in the ejaculate and DNA fragmentation in spermatozoa should not be underestimated (Figure 3).



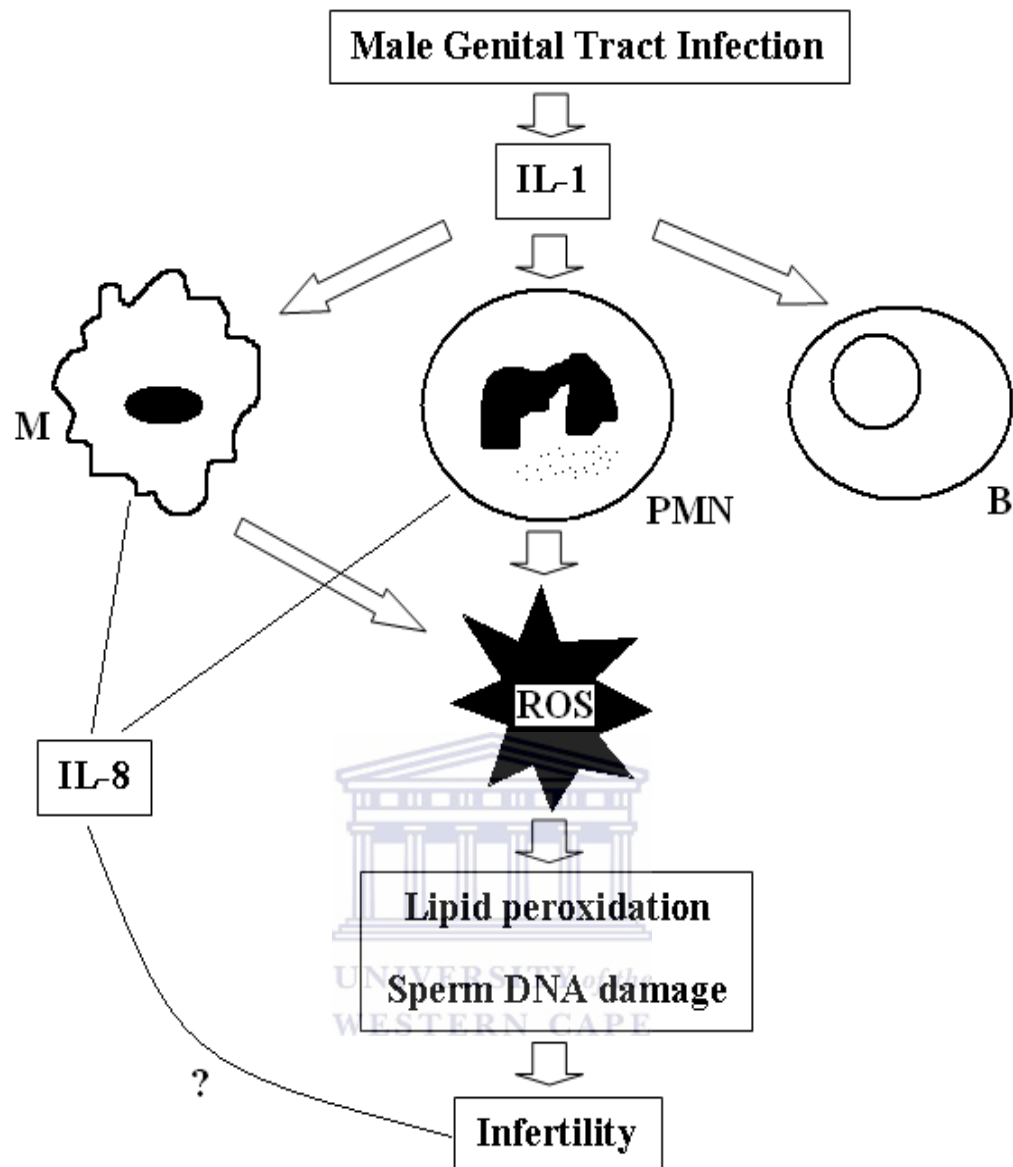


Figure 3 Overview of some of the harmful effects of male genital tract infection on leukocytes in the ejaculate, cytokines, and sperm function. Interleukin-1 (IL-1) is reported to stimulate seminal leukocytes, among which activated polymorphonuclear (PMN) leukocytes and macrophages (M) release reactive oxygen species (ROS) into the seminal plasma. These ROS, such as hydrogen peroxide and superoxide anion, cause lipid peroxidation and sperm DNA damage which contribute to infertility. Interleukin-8 (IL-8) is also reported to have a negative effect on sperm fertilizing potential. Lymphocytes (B) have not been directly associated with male infertility.

1.8 Apoptosis

Apoptosis is a mode of cell death that involves a series of genetically-regulated morphological and biochemical alterations leading the cell to controlled death (Kerr et al., 1972). In the male reproductive tract, it seems clear that this programmed cell death is a key phenomenon during spermatogenesis (Gorczyca et al., 1993; Sun et al., 1997; Lopes et al., 1998; Sakkas et al., 1999; Barroso et al., 2000; Irvine et al., 2000). Recently, several features that are characteristic of apoptosis in somatic cells have been described in human spermatozoa. Ejaculated sperm, particularly from infertile men, have been reported to show Fas expression (Sakkas et al., 2002; Taylor et al., 2004), translocation of phosphatidylserine (Henkel et al., 2004), and reduction in mitochondrial membrane potential (MMP; $\Delta\psi_m$) (Paasch et al., 2004). Caspases (aspartic acid-directed cysteine proteases) are also intimately involved in apoptosis and they have been described in human spermatozoa (Wang et al., 2003). To date, 14 caspases have been identified in humans, and they have been divided into two functional subgroups; initiating caspases (caspase-6, -8, -9, and -10), and effector caspases (caspase-2, -3, and -7) (Nicholson, 1999). Caspases, initially inactive, are activated by a cascade of apoptotic events which, ultimately, converge on caspase-3; the executioner. This caspase then irreversibly activates specific enzymes that degrade the nuclear DNA (Earnshaw et al., 1999). In sperm, as in somatic cells, DNA fragmentation is regarded as a late feature and a hallmark of apoptosis, and it is often preceded by early markers of programmed cell death, such as caspase activation, Fas expression or $\Delta\psi_m$ disruption (Oosterhuis et al., 2000).

Although a number of pathways for the activation of the apoptotic cascade have been cited, the evidence strongly supports two: the death receptor (extrinsic) pathway, and the mitochondrial (intrinsic) pathway (Reed, 2000; Green, 2003). In the extrinsic pathway, death receptors of the tumour necrosis factor family, including Fas, transmit signals via the Fas-associated death domain (FADD) and this triggers caspase-8 which in turn activates caspase-3 (Nagata, 2000). In the intrinsic pathway, on the other hand, apoptosis is induced by signals which include a variety of proteins (Bak, Bax or BH1) that activate the mitochondria to release cytochrome *c* (Liu et al., 1996). ROS can also trigger apoptosis via the intrinsic pathway by destabilizing the mitochondrial membrane and disrupting the electron transfer chain (Green and Reed, 1998). Cytochrome *c* enters the cytosol and cleaves caspase-9 which in turn activates

caspase-3. Friedlander (2003) demonstrated a significant positive correlation of endogenous generation of ROS with oxidative stress-induced sperm damage. They proposed that the exposure of mitochondria to ROS leads to the release of an apoptosis-inducing factor (AIF), which directly interacts with DNA and leads to DNA fragmentation (Cande et al., 2002; Friedlander, 2003). In addition, positive correlation was reported to exist between increased ROS in the ejaculate and high levels of cytochrome *c*, caspase-3 and -9 (Wang et al., 2003). Therefore, it is conceivable that exogenous ROS, such as from activated seminal leukocytes in the presence of male genital tract infection, can induce mitochondrial damage which can lead to sperm DNA fragmentation and apoptosis via the mitochondrial apoptotic pathway (Figure 4).



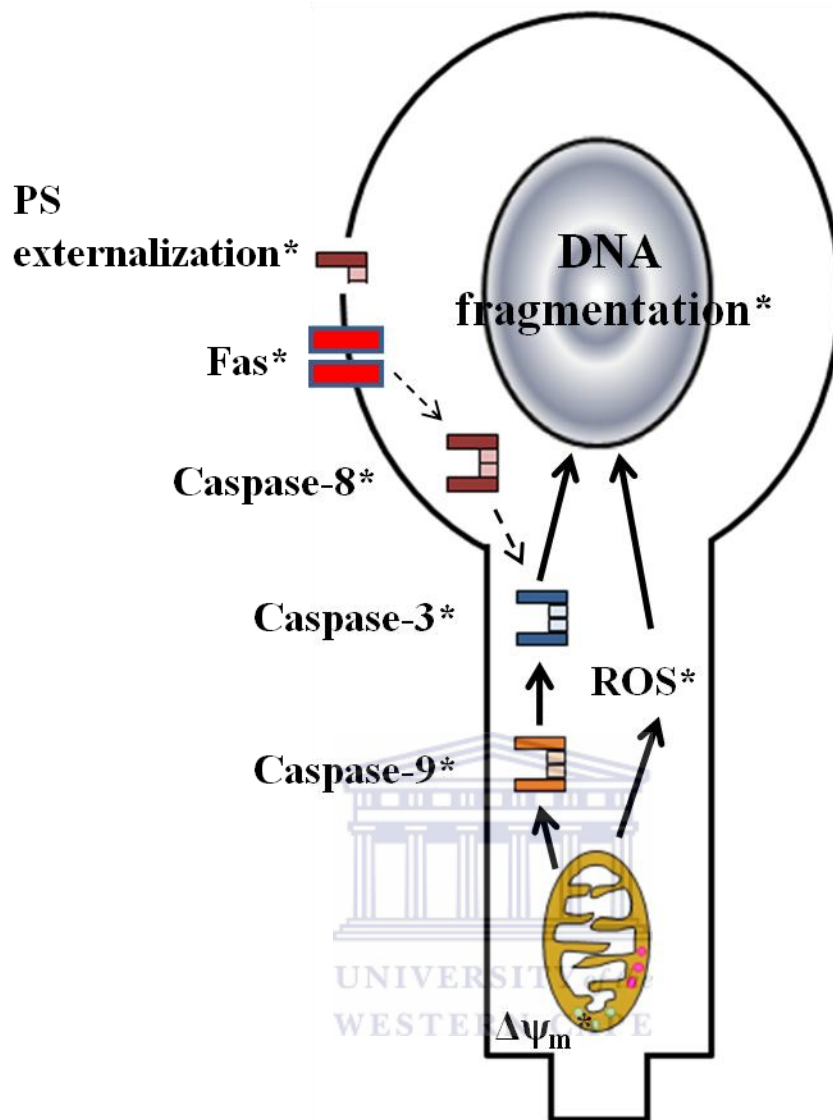


Figure 4 Proposed apoptotic signaling pathways in ejaculated spermatozoa of infertile men. Apoptotic signaling pathways in sperm are extrapolated from current knowledge of apoptosis in somatic cells. (* indicates apoptosis-related markers found in spermatozoa of infertile men). $\Delta\Psi_m$ = mitochondrial membrane potential; ROS = reactive oxygen species; Fas = fibroblast-associated death receptor; PS = phosphatidylserine. (Figure adapted from Marchetti and Marchetti, 2007).

1.9 Aim of the Study

From the literature, it is clear that ROS play an important role in the normal physiology and pathology of the male germ cell. Furthermore, the human sperm is particularly susceptible to oxidative attack, not only for the high lipid content of its plasma membrane, but also because of their inadequate intrinsic antioxidant store. This vulnerability of sperm becomes important when the more robust seminal antioxidant system either malfunctions, or is overwhelmed by excessive ROS generation; as may be the case in the presence of activated seminal leukocytes. Considering that oxidative stress has been strongly and repeatedly linked to DNA fragmentation; a late event of apoptosis, it is possible that male genital tract infection and the attendant infiltration of activated leukocytes into the reproductive tract and the ejaculate, may induce apoptosis in human sperm.

The aim of this study is to investigate the relationship between:

1. male genital tract infection as indicated by the presence of leukocytes in the ejaculate;
2. the oxidative status in sperm and the ejaculate by evaluating the generation of ROS by sperm and in the ejaculate, and assessing the antioxidant activity in sperm by measuring the concentration of reduced glutathione;
3. and the markers of sperm apoptosis: $\Delta\psi_m$ disruption and caspase-3/7 activation in sperm as early markers of apoptosis, and sperm nuclear DNA fragmentation as a late apoptotic event.

CHAPTER TWO

MATERIALS AND METHODS

Figure 5 illustrates the experimental set-up of the study.

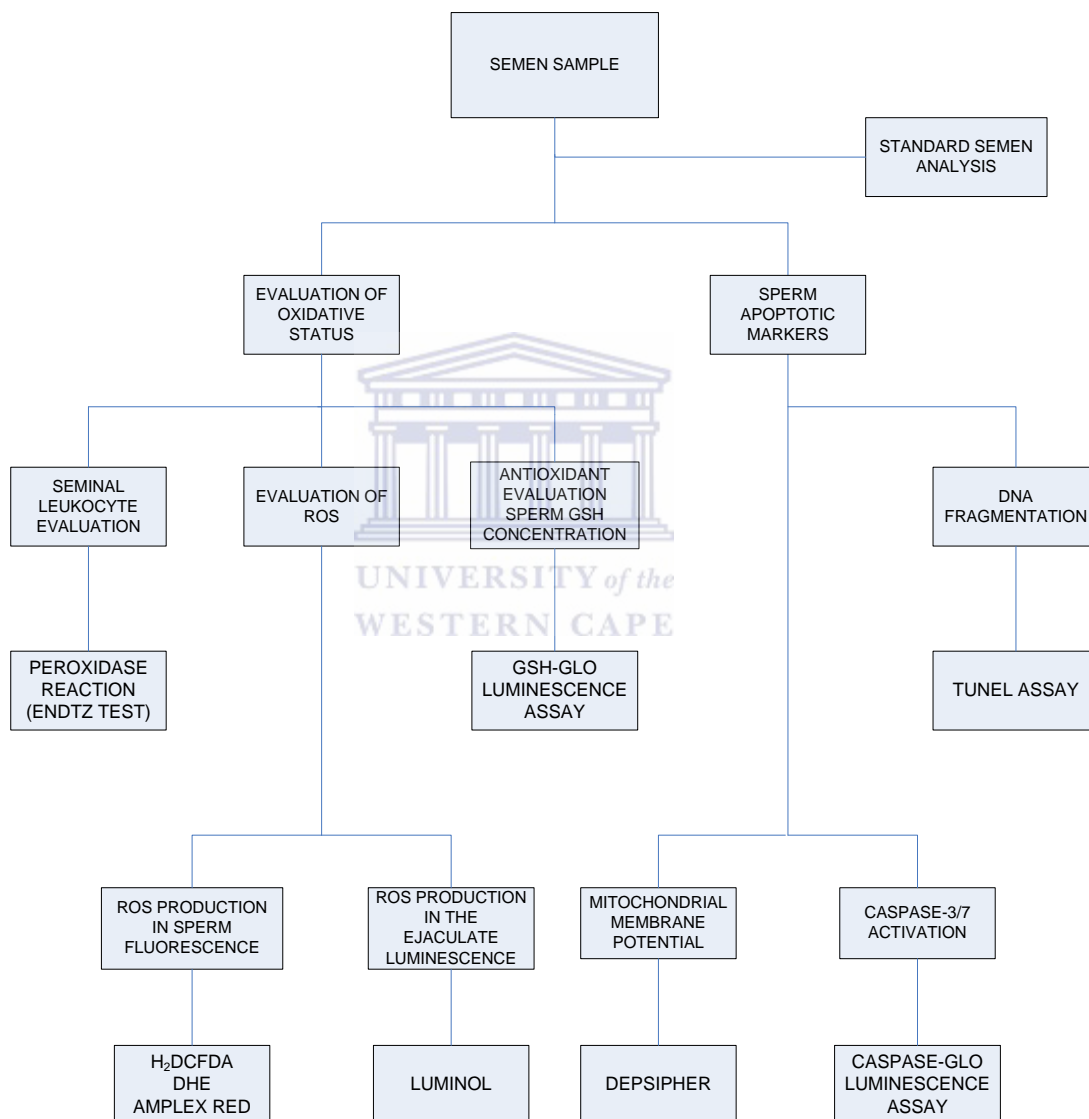


Figure 5 The study had three experimental sub-groups: a standard semen analysis; evaluation of oxidative status, in spermatozoa and in the ejaculate; and assessment of sperm apoptotic markers. ROS = reactive oxygen species; GSH = reduced glutathione; DHE = dihydroethidium; H₂DCFDA = 2,7-dichlorofluorescein diacetate.

2.1 Sample Collection

Semen samples were obtained from 60 men who attended the Reproductive Biology Unit in the Department of Obstetrics and Gynaecology, University of Stellenbosch at the Tygerberg Academic Hospital, Tygerberg, South Africa; and Vincent Pallotti Hospital, Pinelands, South Africa, for fertility problems or assisted reproduction treatment. The samples were collected by masturbation into sterile plastic cups following 2-4 days of sexual abstinence. This study was approved by the Research Committee at the Faculty of Science, University of the Western Cape, and ethical clearance was obtained by the relevant Institutional Review Boards.

2.2 Conventional Sperm Parameters

Semen analysis was performed by experienced scientists to determine the sperm concentration, the percentage of motile sperm, and the sperm forward progression according to the World Health Organization criteria (WHO, 1999). For the sperm forward progression, a grading system on a scale of 1-4 was used (Hotchkiss et al., 1938) which was then assigned arbitrary values to allow for statistical analysis (Table 4).

Table 4: Forward progression grading system.

Hotchkiss Scale	Arbitrary grading	Description of movement
0	0	No movement
1	1	Movement – no forward
1+	1.33	Movement – forward now and then
2	2	Movement – slow and undirected
2+	2.33	Movement – slow but directed forward
3-	2.66	Movement – fast but undirected
3	3	Movement – fast and directed forward
3+	3.33	Movement – very fast and directed forward
4	4	Movement – extremely fast and directed forward

2.3 Oxidative Status in the Ejaculate and in Sperm

2.3.1 Concentration of Peroxidase-positive Leukocytes

The concentration of leukocytes in the ejaculate was determined using the peroxidase stain (Shekarriz et al., 1995). A benzidine stock was prepared by dissolving 125 mg of benzidine (4,4-diaminobiphenyl; Sigma Chemical Co., St Louis, MO, USA) in a mixture of 50 mL of distilled water, and 50 mL of 96% ethanol (Merck, Johannesburg, South Africa) at room temperature (RT). This solution was prepared in 4 mL aliquots and stored away from light at 4°C. To prepare a working solution, 5 µL of 30% hydrogen peroxide (Chemical and Laboratory Suppliers, Cape Town, South Africa) was added to the 4 mL aliquots of the stock solution. In the staining procedure, 20 µL of liquefied semen were mixed with 20 µL of the benzidine working

solution in a 1.5 mL reaction tube (Greiner Bio-One GmbH, Frickenhausen, Germany), and allowed to stand for 5 minutes at RT. Peroxidase-positive leukocytes stained brown (Figure 6) and these were counted in a Makler Chamber (Sefi-Medical Instruments, Haifa, Israel) using a light microscope at $\times 400$ magnification. The results were corrected for dilution and recorded as the number of peroxidase-positive cells ($\times 10^6$)/mL of semen. Ejaculates with leukocyte counts of greater than 1×10^6 /mL were classified as leukocytospermic in accordance with the WHO (1999).

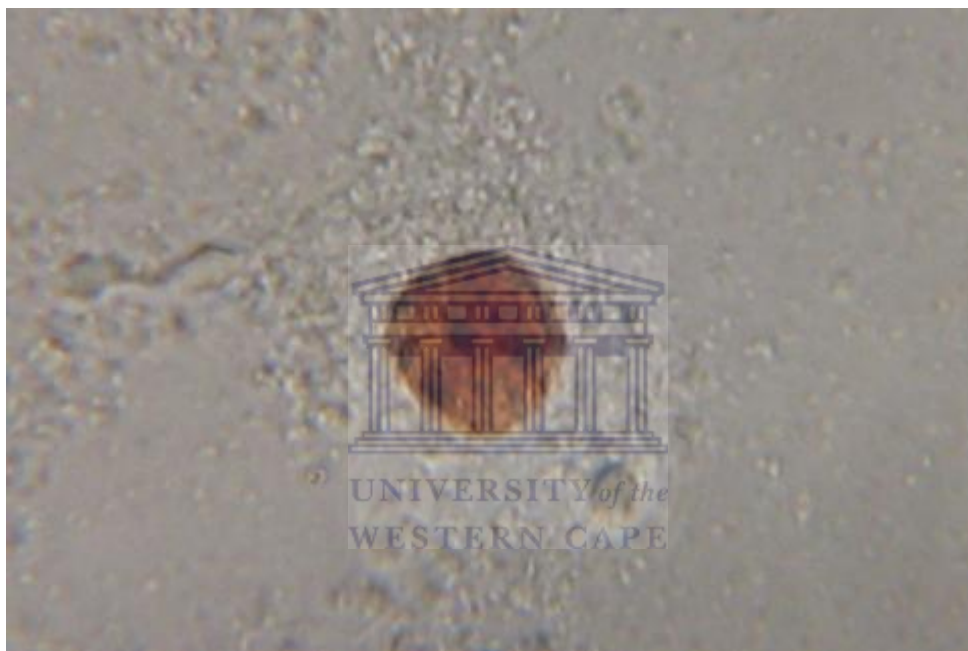


Figure 6 A seminal leukocyte after the peroxidase stain. ($\times 1000$ magnification)

2.3.2 Measurement of ROS production in the Ejaculate

The generation of ROS in the ejaculate was measured by using a chemiluminescence assay with 4 mmol/L luminol (5-amino-2,3 dihydro-1,4 phalazinedione; Sigma) as described by Shekarriz et al. (1995). Luminol is a sensitive chemiluminescence probe that reacts with a variety of ROS including hydrogen peroxide, hydroxyl radicals and the superoxide anion (Aitken and West, 1990). A Berthold luminometer (MicroLumat *Plus* LB 96 V, Bad-Wildbad, Germany) was used to inject the luminol and to read the luminescence. Liquefied semen was diluted 1:5 in human tubal fluid (Quinn et al., 1985) medium supplemented with 10 mg/mL human serum albumin

(HTF-HSA), and then centrifuged for 10 minutes at 300×g at RT. After discarding the supernatant, the resultant pellet was re-suspended in 750 µL of HTF-HSA medium and then 250 µL of suspension were transferred to 2 wells of a white microtitre plate (Dynatech MicroFLUOR™, Chantilly, VA, USA). The first well in each row was designated a negative control and contained 250 µL of HTF-HSA medium only. The luminometer was set in the integrated mode to inject 25 µL of luminol into each well and read the luminescence for 10 minutes. Background luminescence which was obtained from the negative control reading was subtracted from all test values. The concentration of ROS was expressed as relative light units ($\times 10^4$ RLU) per 20×10^6 sperm. All readings were performed in duplicate.

2.3.3 Measurement of Hydrogen Peroxide

Hydrogen peroxide (H_2O_2) is cell permeable and plays an important role in sperm mitochondrial membrane potential disruption and induction of DNA strand breaks. However, the methods of measuring this highly reactive oxidant are controversial. For this reason, 2 fluorescent probes were used to measure intracellular production of H_2O_2 by sperm.

2.3.3.1 2,7-Dihydrofluorescein diacetate.

2,7-dihydrofluorescein diacetate (H_2DCFDA , Molecular Probes, Eugene, Oregon, USA) was reconstituted to 50 µM in PBS and stored in 100 µL aliquots at $-80^\circ C$ protected from light. H_2DCFDA is a stable, non-fluorescent cell-permeable probe which de-esterifies in the presence of intracellular H_2O_2 to form a fluorescent 2,7-dichlorofluorescein (DCF).

Semen samples were washed in PBS and centrifuged at 300×g for 10 minutes. After centrifugation, the supernatant was discarded and the pellet was re-suspended in PBS. Following this, 20 µL of H_2DCFDA was added to 400 µL of the washed semen (final concentration of H_2DCFDA is 2.5 µM) and incubated for 45 minutes at $37^\circ C$ protected from light. The mixture was then centrifuged again for 10 minutes at 300×g and the pellet was re-suspended in 400 µL of PBS. A fluorescence microscope

(Zeiss), fitted with a 488 nm excitation filter and 510-530 nm emission filter, was used to analyze the sperm at $\times 400$ magnification. All sperm fluorescing bright green (Figure 7) were H_2O_2 -positive and expressed as a percentage of the total sperm observed in that field [H_2O_2 -positive (DCF) (%)].

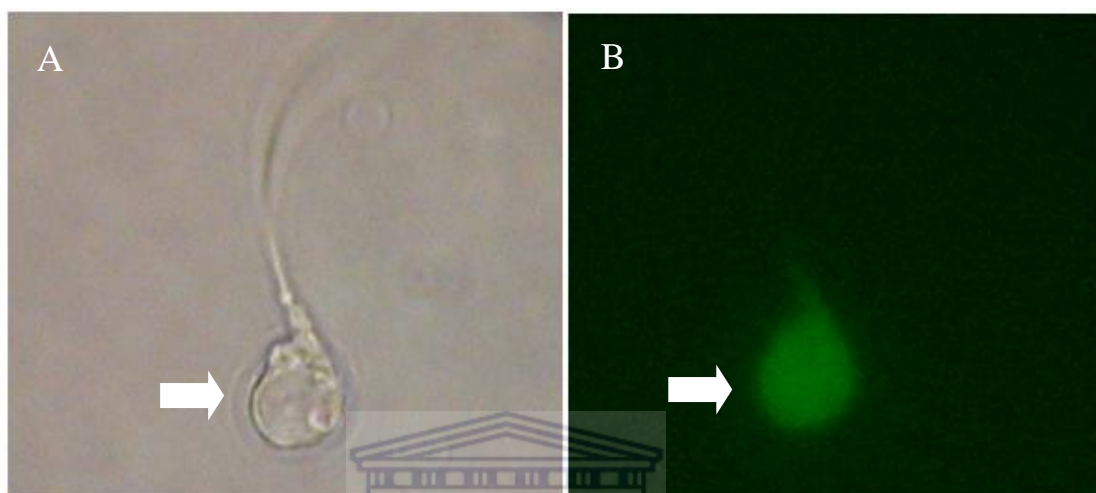


Figure 7 A sperm with a head deformity (arrow, A) was H_2O_2 -positive and fluoresced bright green (arrow, B) after staining with H_2DCFDA . ($\times 1000$ magnification)

2.3.3.2 Amplex UltraRed™ and Horseradish Peroxidase (HRP)

A working solution of 100 μM Amplex UltraRed™ reagent (10-acetyl-3,7-dihydrophenoxazine, Molecular Probes), and 0.2U/mL HRP (Sigma) was prepared by mixing 50 μL of 10 mM Amplex UltraRed™ reagent stock solution, 100 μL of 10 U/mL HRP and 4.85 mL of 1X reaction buffer (50 mM sodium phosphate, Merck). This 5 mL volume was stored in 50 μL aliquots at -80°C protected from light. For each semen sample, 100 μL ejaculate was washed in PBS and centrifuged for 10 minutes at $300\times g$, the resultant supernatant was discarded and the pellet was re-suspended in PBS. Thereafter, 50 μL of the washed semen was mixed with 50 μL of Amplex UltraRed™ working solution, and incubated for 30 minutes at RT away from light. The Amplex UltraRed™ reagent reacted with H_2O_2 to produce a red fluorescence oxidation product called resofurin. Therefore, the sperm fluorescing red

(Figure 8) when analyzed at $\times 400$ magnification with a fluorescence microscope (Zeiss) equipped with 488 nm excitation and 590 emission filters were considered to be H_2O_2 -positive and recorded as a percentage of the total number of sperm under observation [H_2O_2 -positive (Amplex) (%)].

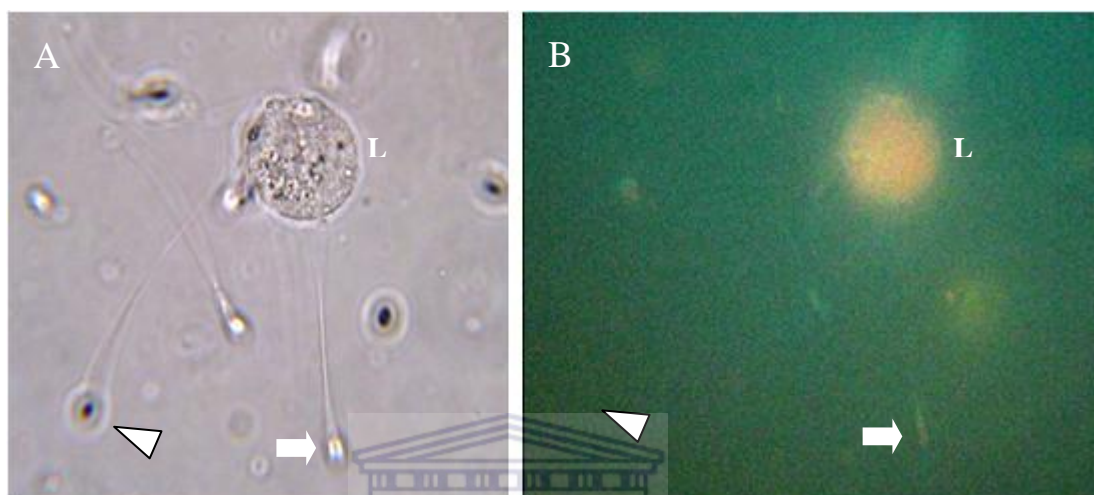


Figure 8 H_2O_2 -positive sperm (white arrows) showed a red fluorescence (B) after staining with Amplex UltraRed™ and HRP. The arrow head (A) shows a H_2O_2 -negative sperm which showed no fluorescence (B). The polymorphonuclear leukocyte (L) also stained positive for H_2O_2 . The pictures were difficult to take because the fluorescence faded quickly after exposure to UV light. ($\times 1000$ magnification)

2.3.4 Measurement of Superoxide Anion ($\text{O}_2^{\cdot -}$)

Intracellular generation of $\text{O}_2^{\cdot -}$ was estimated using dihydroethidium (DHE, Molecular Probes), an uncharged probe that reports overall cellular $\text{O}_2^{\cdot -}$ production. When DHE is oxidized by $\text{O}_2^{\cdot -}$ within the cell, it produces DNA sensitive fluorochromes that generate a orange/red nuclear fluorescence when excited at 488 nm (Rothe and Valet, 1990). For this assay, a 20 μM DHE stock solution was prepared by dissolving 6.3 mg of DHE in 1 mL of DMSO (Sigma) and then adding 999 mL of distilled water. A 100 μL volume of ejaculate was diluted (1:2) with PBS and then centrifuged at 300g for 10 minutes. After discarding the supernatant, the

pellet was re-suspended with PBS. Following this, 20 μL of DHE stock was added to 180 μL of sperm suspension, and then incubated for 15 minutes at 37°C in the dark. After incubation, a wet smear was made on a slide and then analyzed under a fluorescence microscope (Zeiss) at $\times 400$ magnification. The excitation wavelength was 488 nm and the emission filter was 590 nm. Orange/red fluorescing sperm [$\text{O}_2^{\cdot-}$ -positive sperm (DHE) (%); Figure 9] were recorded as a percentage of all the sperm observed.

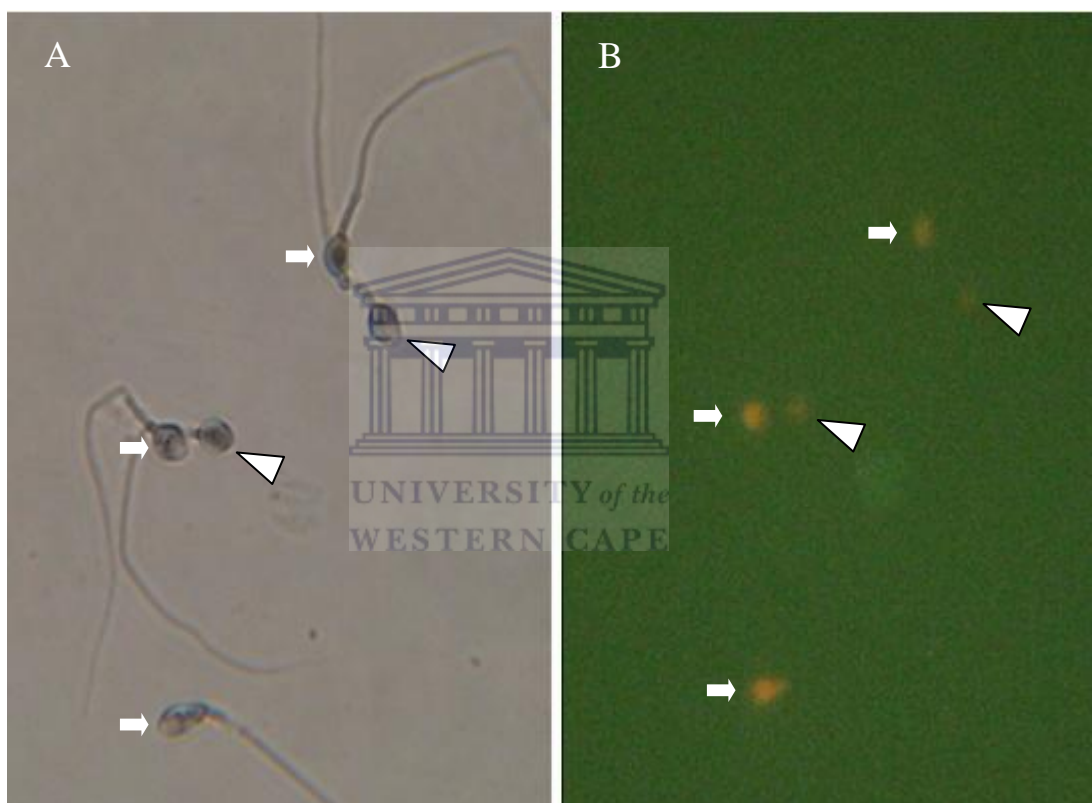


Figure 9 Spermatozoa after staining with DHE; $\text{O}_2^{\cdot-}$ -positive sperm (arrows) fluoresced orange/red, and $\text{O}_2^{\cdot-}$ -negative sperm (arrow heads). ($\times 1000$ magnification)

2.3.5 Measurement of Reduced Glutathione (GSH) activity in Sperm

The GSH-Glo™ luminescence assay (Promega) was used to estimate the activity of reduced glutathione (GSH) in the ejaculate. GSH, a substrate of glutathione peroxidase, is part of an antioxidant enzymatic scavenging system that forms an important intracellular defence against oxidative stress. The GSH-Glo™ assay is

based on the conversion of a luciferin derivative in the presence of GSH which is catalyzed glutathione S-transferase (GST). The signal generated in the reaction is proportional to the amount of GSH present in the sample.

For the assay, a GSH-Glo™ reagent 2X was prepared according to manufacturer's instructions. In brief, 50 µL GSH-Glo™ reagent 2X contains 0.5µL Luciferin-NT substrate, 0.5 µL GST, and 49 µL of reaction buffer. A reconstituted Luciferin detection reagent stock solution was also prepared by adding Luciferin detection reagent to Luciferin reaction buffer as per manufacturer's instructions. The 50 µL GSH-Glo™ reagent 2X was added to 50 µL of washed semen (diluted with PBS, centrifuged for 10 minutes at 300×g, and re-suspended with PBS) and then incubated for 30 minutes at RT protected from light in a 1.5 mL reaction tube. Subsequently, 50 µL reconstituted Luciferin detection reagent was added and the reaction mixture was incubated for 15 minutes at RT away from light. Following this, 100 µL of the reaction mixture was transferred to a microtitre plate (Dynatech MicroFLUOR™). Luminescence was measured using a Berthold luminometer (MicroLumat *Plus* LB 96 P) set at integration mode to measure luminescence for 30 seconds for each well. The first well in each row contained a negative control which was prepared and incubated in the same way as the test, but with 50 µL PBS replacing 50 µL washed semen. The negative control luminescence was subtracted from the test result and the outcome was recorded as $\times 10^4$ RLU/20 $\times 10^6$ sperm.

2.4 Sperm Apoptotic Markers

2.4.1 Determination of the Integrity of MMP ($\Delta\psi_m$)

The membrane potential of the mitochondria ($\Delta\psi_m$) in sperm was determined using a lipophilic cationic dye DePsipher™ (Trevigen, Minneapolis, USA). Each aliquot of DePsipher™ contained 1 µg of the dye diluted in 1 mL of PBS. After washing with PBS, a sample was centrifuged for 10 minutes at 300×g. The pellet was then re-suspended with 50-200 µL of DePsipher™ and incubated at 37°C in 5% CO₂ for 20 minutes protected from light. After incubation, the sample was centrifuged and the pellet was re-suspended with a reaction buffer. The sample was immediately observed using a fluorescence microscope with a 488 nm excitation filter (Zeiss) at

×400 magnification. Sperm with intact $\Delta\psi_m$ excited an intense red fluorescence (590 nm emission filter) due to the formation of dye aggregates inside mitochondria (Figure 10, A). In the sperm with disrupted $\Delta\psi_m$ ($\Delta\psi_m$ -negative sperm), the monomer dye fluoresced green (530 nm emission filter) (Figure 10, B). The number of $\Delta\psi_m$ -negative sperm was recorded as a percentage of the total number of sperm counted.

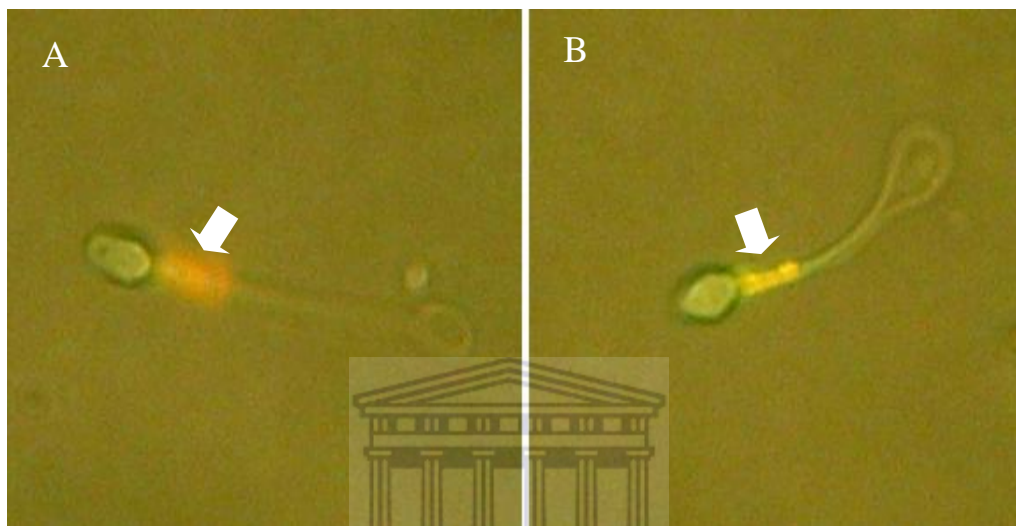


Figure 10 After staining with DePsipher™, sperm with intact $\Delta\psi_m$ showed red fluorescence (A), while those with disrupted $\Delta\psi_m$ had a green fluorescence (white arrow; B). (×1000 magnification)

2.4.2 Measurement of Caspase-3/7 activation in Sperm

Caspase activation was determined using the Caspase-Glo™3/7 assay (Promega). This luminescent assay measures the activities of caspase-3 and -7 which are members of the cysteine aspartic acid-specific protease (caspase) family that play key effector roles in apoptosis in mammalian cells.

The Caspase-Glo™ reagent was prepared by mixing the Caspase-Glo™ substrate and Caspase-Glo™ buffer at RT protected from light. The resultant reagent was then stored in 100 μ L aliquots and at -80°C . Semen samples were washed in PBS and centrifuged at $300\times g$ for 10 minutes. Following this, the supernatant was discarded and the pellet was re-suspended in PBS. A 100 μ L aliquot of Caspase-Glo™ reagent

was then equilibrated to RT and mixed with 100 μ L of the washed semen sample in a reaction tube. The mixture was then incubated for 60 minutes away from light at RT. After incubation, the contents of the reaction tube were homogenized, and then 100 μ L of the reaction mixture were transferred into a white microtitre plate (Dynatech MicroFLUOR™) as the test. The first well of each row was used as a negative control and it contained 100 μ L of PBS mixed with 100 μ L of Caspase-Glo™ reagent which had been incubated for 60 minutes. Luminescence was measured using a Berthold luminometer (MicroLumat *Plus* LB 96 P) set at integration mode to measure luminescence for 30 seconds for each well. The Caspase-Glo™ reagent contains the tetrapeptide sequence DEVD which causes cell lysis followed by caspase cleavage resulting in a luminescent signal that is proportional to the caspase activity present in the reaction. The negative control luminescence was subtracted from the test result and the outcome was recorded as $\times 10^4$ RLU/ 20×10^6 sperm.

2.4.3 Measurement of Sperm DNA Fragmentation

DNA fragmentation was measured by using the terminal deoxynucleotidyl transferase-mediated dUTP-biotin nick end labeling (TUNEL) assay (Henkel et al., 2003b). The TUNEL assay quantifies the incorporation of deoxyuridine triphosphate (dUTP) at single and double strand DNA breaks in an enzymatic reaction by labeling the free 3'-OH and the modified nucleotides with terminal deoxynucleotidyl transferase.

After washing samples in phosphate buffered saline (PBS) (Oxoid Ltd., Hampshire, England), the resultant pellet was re-suspended, and a wet smear was made on a StarFrost™ slide (Knittel Gläser, Braunschweig, Germany) and left to air-dry at RT. The slides were then fixed in 4% formaldehyde in PBS (pH 7.4) for 25 minutes at 4°C. After fixation, the slides were washed in PBS for 5 minutes at RT and permeabilized in 0.2% Triton™ X-100 (Sigma) in PBS for 5 minutes at RT. The slides were then rinsed twice in PBS for 5 minutes at RT. A 100 μ L of equilibration buffer was added to each slide and allowed to equilibrate for 10 minutes. After this, 20 μ L of TUNEL reagent (DeadEnd™, Promega, Madison, WI, USA) was added to each slide and then a plastic cover slip (Promega) was applied. Following incubation for 60 minutes at 37°C in a humidified chamber away from light, the reaction was

terminated by immersion in 2×SSC (Promega) for 15 minutes. The slides were then washed in PBS three times and more than 200 randomly selected sperm were immediately analyzed using a fluorescence microscope (Zeiss, Oberkochen, Germany) equipped with a 50W mercury lamp, a 488 nm excitation filter and a 510-530 nm emission filter, at ×400 magnification with an oil immersion objective. Sperm with normal DNA only had background staining (TUNEL-negative), while those with fragmented DNA had a bright green fluorescence (TUNEL-positive) (Figure 11). TUNEL-positive sperm were recorded as a percentage of the total number of sperm per field.

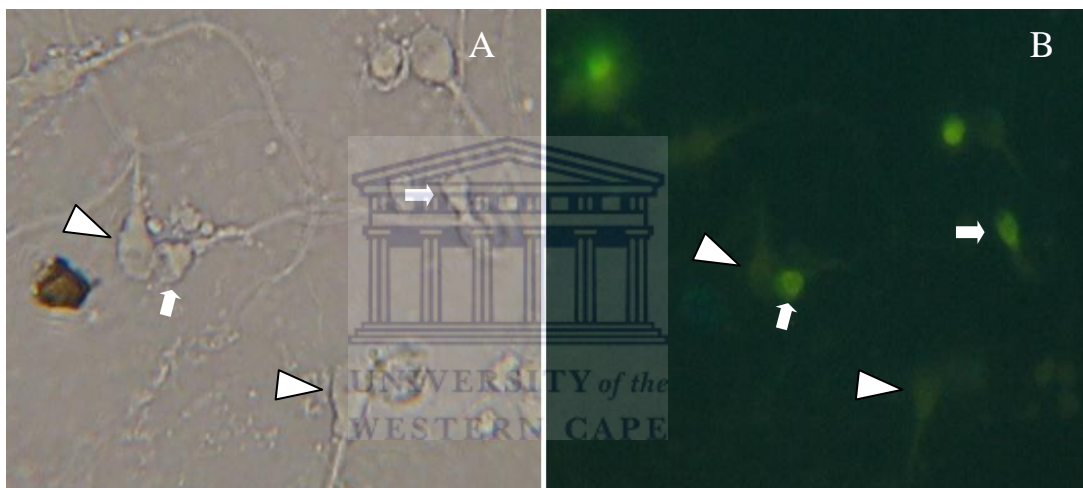


Figure 11 Sperm with nuclear DNA damage (TUNEL-positive sperm) fluoresced bright green (white arrows) after TUNEL assay. TUNEL-negative sperm (white arrow heads) showed background staining only. (×1000 magnification)

2.5 Statistical Analysis

Normal distribution was tested by means of the D'Agostino-Pearson test (D'Agostino and Pearson, 1973), and following this parametric and nonparametric tests were performed accordingly. The results were presented as mean±SD, median and range. A P-value of less than 0.05 ($P < 0.05$) was considered for statistical significance. In order to compare the Amplex UltraRed™ and H₂DCFDA assays which were used to determine H₂O₂ generation in sperm, Bland and Altman (Bland and Altman, 1986), and Mountain plots (Krouwer and Monti, 1995) were performed as well as

concordance correlation coefficients (Lin, 1989) were calculated. The latter evaluates the degree to which pairs of observations fall on a 45° line through the origin, and it contains a measure of precision (Pearson correlation coefficient: ρ) and accuracy (Bias correlation factor: C_b).

MedCalc® statistical software (version 9.3.8.0; Mariakerke, Belgium) was used to perform all statistical tests and analyses.



CHAPTER THREE

RESULTS

3.1 Summary Statistics

The summary statistics of the parameters that were analyzed in this study are shown in Table 5. Following the D'Agostino-Pearson test for normality, the data from all parameters were not normally distributed except for the percentage of motile spermatozoa ($P = 0.177$). The data for the parameters in this study shows high standard deviation, which is a common finding in biological data (Table 5).

3.2 Semen Parameters

The sperm count ($\times 10^6/\text{mL}$) was negatively correlated with GSH activity in spermatozoa ($\rho = -0.435$; $P = 0.0017$), and ROS production in the ejaculate ($\rho = -0.296$; $P = 0.033$). This parameter also showed a tendency for negative correlation with caspase-3/7 activity in sperm ($\rho = -0.247$; $P = 0.0668$). Sperm motility was positively correlated with sperm forward progression ($\rho = 0.288$; $P = 0.0283$).

3.3 Oxidative Status in the Ejaculate and in Spermatozoa

3.3.1 Peroxidase-positive Leukocytes

The concentration of peroxidase-positive cells ($\times 10^6/\text{mL}$ of ejaculate) was positively correlated with ROS production in the ejaculate ($\rho = 0.378$; $P = 0.0064$), the percentage of $\text{O}_2^{\cdot-}$ -positive sperm ($\rho = 0.366$; $P = 0.0098$) (Table 6b), and caspase-3/7 activation in sperm ($\rho = 0.527$; $P < 0.0001$). There was no correlation between the concentration of peroxidase-positive cells and semen parameters (Table 6a), the percentage of TUNEL-positive sperm ($\rho = 0.0195$; $P = 0.8817$), and the percentage of $\Delta\psi_{\text{m}}$ -negative sperm ($\rho = 0.0854$; $P = 0.5121$) (Table 6c).

Table 5: Summary statistics of all parameters measured in this study.

	n	Mean±SD	Median	Range	P[‡]
Sperm count ($\times 10^6$ /mL)	60	76.8±57.6	80	8-338	<0.0001
Sperm motility (%)	59	52.5±10.6	50	20-70	0.177
Forward progression	59	2.53±0.32	2.66	1.33-3.3	0.0049
Peroxidase-positive cells ($\times 10^6$ /mL)	60	0.52±1.28	0.14	0.02-8.9	<0.0001
ROS production in the ejaculate [†]	53	10.6±41.7	0.43	-0.5-248	<0.0001
H ₂ O ₂ -positive sperm (Amplex) (%)	59	21.7±13.9	17.6	2-72	<0.0001
H ₂ O ₂ -positive sperm (DCF) (%)	60	23.5±13.7	20.4	5.4-89.4	<0.0001
O ₂ ^{-•} -positive sperm (DHE) (%)	60	25.9±15.8	21.0	4.1-76.9	0.003
GSH activity in sperm [†]	53	73.2±182	18.2	-21-1187	<0.0001
$\Delta\Psi_m$ -negative sperm (%)	60	25.2-20.1	16.8	4.5-83.9	<0.0001
Caspase ^a activation in sperm [†]	58	247±353	133.8	44-1842	<0.0001
TUNEL-positive sperm (%)	59	10.3±6.6	9.2	2.3-37.1	<0.0001

[‡] P-value for D'Agostino-Pearson test for normality; **SD**: standard deviation; **ROS**: reactive oxygen species; [†] $\times 10^4$ RLU/20 $\times 10^6$ sperm; **Amplex**: Amplex UltraRed™; **DCF**: 2,7-dihydrofluorescein diacetate; ^a caspase-3/7; **GSH**: reduced glutathione.

Table 6a: Relationship between the concentration of peroxidase-positive cells and semen parameters.

	n	ρ	P-value
Sperm count ($\times 10^6/\text{mL}$)	60	0.0165	0.8989
Sperm motility	59	0.148	0.2608
Forward progression	59	0.0043	0.9738

Table 6b: Relationship between the concentration of peroxidase-positive cells and oxidative status.

	n	ρ	P-value
ROS production in the ejaculate†	53	0.378	0.0064
H ₂ O ₂ -positive sperm (Amplex) (%)	59	0.210	0.1092
H ₂ O ₂ -positive sperm (DCF) (%)	60	0.085	0.5162
O ₂ ⁻ -positive sperm (DHE) (%)	60	0.336	0.0098
GSH activity in sperm†	53	0.211	0.1275

† $\times 10^4$ RLU/ 20×10^6 sperm.

Table 6c: Relationship between the concentration of peroxidase-positive cells and sperm apoptotic markers.

	n	ρ	P-value
$\Delta\psi_m$ -negative sperm (%)	60	0.0854	0.5121
Caspase ^a activation in sperm [†]	58	0.527	<0.0001
TUNEL-positive sperm (%)	59	0.0195	0.8817

^a caspase-3/7; [†] $\times 10^4$ RLU/20 $\times 10^6$ sperm.

Three cut-off values for leukocyte count in the ejaculate were used to evaluate the relationship between the peroxidase-positive cells and other parameters under investigation. These cutoff values ($\times 10^6$ /mL) were ≥ 0.25 , ≥ 0.5 , and ≥ 1.0 (Tables 7a-7c). At the cut-off value of $\geq 0.25 \times 10^6$ /mL, the concentration of peroxidase-positive cells had strong positive correlations with GSH activity in sperm ($\rho = 0.718$; $P = 0.0072$), the percentage of $\Delta\psi_m$ -negative sperm ($\rho = 0.465$; $P = 0.0427$), caspase-3/7 activation in sperm ($\rho = 0.794$; $P = 0.0008$), and the percentage of TUNEL-negative sperm ($\rho = 0.563$; $P = 0.017$). At the cut-off value of $\geq 0.5 \times 10^6$ /mL, peroxidase-positive cell count was positively correlated with ROS production in the ejaculate ($\rho = 0.817$; $P = 0.0209$) and caspase-3/7 activation in sperm ($\rho = 0.729$; $P = 0.0157$). At $\geq 1.0 \times 10^6$ leukocytes/mL of ejaculate, the concentration of peroxidase-positive cells was positively correlated with sperm forward progression ($\rho = 0.756$; $P = 0.0455$) and ROS production in the ejaculate ($\rho = 0.943$; $P = 0.035$).

As Tables 7a-7c show, the strength of the correlation between peroxidase-positive cell concentration and the following parameters had a tendency to increase from lower to higher cut-off value; sperm count, sperm motility, forward progression, ROS production in the ejaculate, and the percentage of $O_2^{\cdot-}$ -positive sperm. Conversely, the strength of the correlation decreased from lower cut-off value to higher with other parameters (the percentage of H_2O_2 -positive sperm, GSH activity in sperm, the percentage of $\Delta\psi_m$ -negative sperm, caspase-3/7 activation in sperm, and the percentage of TUNEL-positive sperm).

Table 7a: Relationship between the concentration of peroxidase-positive cells at different cut-off values with semen parameters.

	$\geq 0.25 \times 10^6/\text{mL}$			$\geq 0.5 \times 10^6/\text{mL}$			$\geq 1.0 \times 10^6/\text{mL}$		
	n	ρ	P	n	ρ	P	n	ρ	P
Sperm count‡	20	-0.097	0.6739	12	-0.204	0.4989	8	-0.530	0.1607
Sperm motility	20	-0.114	0.6196	12	0.107	0.7231	8	0.396	0.2949
Forward progression	20	0.072	0.7539	12	0.302	0.3173	8	0.756	0.046

‡ $\times 10^6/\text{mL}$ of semen.

Table 7b: Relationship between the concentration of peroxidase-positive cells at different cut-off values with oxidative status.

	$\geq 0.25 \times 10^6/\text{mL}$			$\geq 0.5 \times 10^6/\text{mL}$			$\geq 1.0 \times 10^6/\text{mL}$		
	n	ρ	P	n	ρ	P	n	ρ	P
ROS production in the ejaculate†	20	0.234	0.3077	9	0.817	0.021	6	0.943	0.035
H ₂ O ₂ -positive sperm (A) (%)	20	0.374	0.1031	12	0.263	0.3836	8	0.310	0.4128
H ₂ O ₂ -positive sperm (D) (%)	20	0.234	0.3077	12	-0.01	0.7538	8	-0.05	0.9068
O ₂ ⁻ -positive sperm (DHE) (%)	20	0.072	0.7539	12	0.302	0.3173	8	0.405	0.2842
GSH activity in sperm†	15	0.718	0.008	9	0.483	0.1716	6	0.314	0.4822

† $\times 10^4$ RLU/ 20×10^6 sperm; **A:** Amplex UltraRed; **D:** 2,7-dihydrofluorescein diacetate.

Table 7c: Relationship between the concentration of peroxidase-positive cells at different cut-off values with sperm apoptotic markers.

	$\geq 0.25 \times 10^6/\text{mL}$			$\geq 0.5 \times 10^6/\text{mL}$			$\geq 1.0 \times 10^6/\text{mL}$		
	n	ρ	P	n	ρ	P	n	ρ	P
$\Delta\psi_m$ -negative sperm (%)	20	0.465	0.043	12	0.399	0.1854	8	0.214	0.5708
Caspase activation in sperm ^{†‡}	19	0.794	0.001	12	0.729	0.016	8	0.571	0.1306
TUNEL-positive sperm (%)	19	0.563	0.017	12	0.0525	0.8617	8	0.238	0.5287

[†] $\times 10^4$ RLU/ 20×10^6 sperm; [‡] caspase-3/7.

Furthermore, patients were grouped according to cut-off values for seminal leukocytes, and comparisons were made using the Mann-Whitney test between the following groups: $\geq 0.25 \times 10^6$ and $< 0.25 \times 10^6$ leukocytes/mL of semen; $\geq 0.5 \times 10^6$ and $< 0.5 \times 10^6$ mL, and $\geq 1 \times 10^6$ and $< 1 \times 10^6$ leukocytes/mL of semen for the different parameters. For the comparison between the subgroups $\geq 0.25 \times 10^6$ and $< 0.25 \times 10^6$ leukocytes/mL, there were significant differences for peroxidase-positive cell concentration ($P < 0.0001$), ROS production in the ejaculate ($P = 0.0188$), the percentage of $O_2^{\cdot-}$ -positive sperm ($P = 0.023$), and caspase-3/7 activation in sperm ($P = 0.0004$). The Mann-Whitney test between the $\geq 0.5 \times 10^6$ and $< 0.5 \times 10^6$ mL groups revealed significant differences for peroxidase-positive cells ($P < 0.0001$), ROS production in the ejaculate ($P = 0.0004$), the percentage of $O_2^{\cdot-}$ -positive sperm ($P = 0.0306$), GSH activity in sperm ($P = 0.0086$), caspase-3/7 activation in sperm ($P = 0.0001$), and the percentage of TUNEL-positive sperm ($P = 0.0195$). There was significance difference between $\geq 1 \times 10^6$ and $< 1 \times 10^6$ leukocytes/mL groups for peroxidase-positive cells ($P < 0.0001$), ROS production in the ejaculate ($P = 0.0004$), the percentage of $O_2^{\cdot-}$ -positive sperm ($P = 0.0168$), GSH activity in sperm ($P = 0.0083$), and caspase-3/7 activation in sperm ($P = 0.0002$). Table 7d shows the Mann-Whitney test for differences between the above groups.

Table 7d: Mann-Whitney test for differences between the medians of the subgroups according to peroxidase-positive cell concentration ($\times 10^6$ leukocytes/mL of semen) for the parameters.

	Comparison			Comparison			Comparison		
	≥ 0.25	< 0.25		≥ 0.5	< 0.5		≥ 1.0	< 1.0	
	X\pmSD	X\pmSD	P	X\pmSD	X\pmSD	P	X\pmSD	X\pmSD	P
Sperm count ($\times 10^6$ /mL)	25.8 \pm 18.3	73.7 \pm 57.1	0.7301	86.5 \pm 62.7	74.4 \pm 56.7	0.6309	90.8 \pm 69.3	74.6 \pm 56.0	0.6170
Sperm motility (%)	55.5 \pm 9.4	51.0 \pm 11.0	0.2146	54.2 \pm 7.9	52.1 \pm 11.2	0.6311	53.8 \pm 9.2	52.4 \pm 10.9	0.8500
Forward progression	2.5 \pm 0.4	2.5 \pm 0.3	0.3327	2.6 \pm 0.3	2.5 \pm 0.3	0.2960	2.5 \pm 0.4	2.5 \pm 0.3	0.3300
ROS production \dagger	346 \pm 747	11.1 \pm 19.6	0.0188	573 \pm 911	10.2 \pm 18.5	0.0004	771 \pm 1074	20.9 \pm 76.6	0.0004
H ₂ O ₂ -positive cells (A) (%)	25.8 \pm 18.3	19.5 \pm 10.8	0.3247	31.2 \pm 21.0	19.2 \pm 10.5	0.0919	36.0 \pm 23.9	19.4 \pm 10.4	0.0924
H ₂ O ₂ -positive cells (D) (%)	25.8 \pm 18.8	22.4 \pm 10.4	0.8754	30.2 \pm 21.6	21.9 \pm 10.6	0.3183	32.1 \pm 26.3	22.2 \pm 10.5	0.6093
O ₂ ⁻ -positive sperm (E) (%)	33.6 \pm 19.1	22.0 \pm 12.5	0.0230	36.6 \pm 20.5	23.2 \pm 13.4	0.0306	41.0 \pm 21.8	23.5 \pm 13.5	0.0168
GSH activity in sperm \dagger	1588 \pm 3064	393 \pm 821	0.1284	2547 \pm 3714	361 \pm 773	0.0086	3391 \pm 4367	393 \pm 789	0.0083
$\Delta\psi_m$ -negative sperm (%)	28.1 \pm 23.3	23.7 \pm 18.5	0.7717	35.6 \pm 26.8	22.6 \pm 17.5	0.1251	39.0 \pm 30.1	23.1 \pm 17.6	0.0984
Caspase ^a activity in sperm \dagger	4758 \pm 5400	1352 \pm 970	0.0004	6593 \pm 6106	1392 \pm 958	0.0001	18421 \pm 6608	1488 \pm 1061	0.0002
TUNEL-positive sperm (%)	11.3 \pm 8.6	9.8 \pm 5.5	0.7518	14.9 \pm 8.9	9.1 \pm 5.4	0.0195	14.7 \pm 10.7	9.6 \pm 5.5	0.1597

\ddagger $\times 10^6$ cells/mL of semen; \dagger ROS production in the ejaculate $\times 10^4$ RLU/ 20×10^6 sperm; ^a caspase-3/7; **A**: Amplex UltraRed; **D**: DCF; **E**: DHE.

3.3.2 ROS production in the Ejaculate

ROS production in the ejaculate was positively correlated with the concentration of peroxidase-positive cells ($\rho = 0.378$; $P = 0.0064$), GSH activity in sperm ($\rho = 0.577$; $P < 0.0001$), caspase-3/7 activation in sperm ($\rho = 0.487$; $P = 0.0005$), and the percentage of TUNEL-positive sperm ($\rho = 0.331$; $P = 0.0171$). In addition, ROS production in the ejaculate was negatively correlated with sperm count ($\rho = -0.296$; $P = 0.033$). Tables 8a to 8c demonstrate the relationship between ROS production in the ejaculate and other parameters.

Table 8a: Relationship between ROS production in the ejaculate and semen parameters.

	n	ρ	P-value
Sperm count ($\times 10^6/\text{mL}$)	53	-0.296	0.033
Sperm motility	52	0.0264	0.8502
Forward progression	52	0.0846	0.5458

Table 8b: Relationship between ROS production in the ejaculate and oxidative status.

	n	ρ	P-value
Peroxidase-positive cells ($\times 10^6/\text{mL}$)	53	0.378	0.0064
H ₂ O ₂ -positive sperm (Amplex) (%)	52	0.120	0.3899
H ₂ O ₂ -positive sperm (DCF) (%)	53	0.169	0.2221
O ₂ ^{•-} -positive sperm (DHE) (%)	53	-0.011	0.9358
GSH activity in sperm†	53	0.577	<0.0001

† $\times 10^4$ RLU/ 20×10^6 sperm

Table 8c: Relationship between ROS production in the ejaculate and sperm apoptotic markers.

	n	ρ	P-value
$\Delta\Psi_m$ -negative sperm (%)	53	0.175	0.2072
Caspase ^a activation in sperm†	52	0.487	0.0005
TUNEL-positive sperm (%)	53	0.331	0.0171

^a caspase-3/7; † $\times 10^4$ RLU/ 20×10^6 sperm.

3.3.3 The percentage of H₂O₂-positive Sperm

Hydrogen peroxide is potentially the most harmful ROS, particularly to spermatozoa of infertile patients, and two methods were used in this study to detect H₂O₂-positive sperm. Tables 9a to 9b show the relationship between the percentage of H₂O₂-positive sperm as measured by Amplex UltraRed (Amplex) and 2,7-dihydrofluorescein diacetate (DCF). The percentage of H₂O₂-positive sperm as measured by the two methods had a weaker positive correlation than expected

($\rho = 0.306$; $P = 0.0199$). The percentage of H₂O₂-positive sperm (Amplex) was positively correlated with the percentage of TUNEL-positive sperm ($\rho = 0.274$; $P = 0.0388$). Notably, there was no correlation between the percentage of H₂O₂-positive sperm and sperm motility (Table 9a), or the percentage of O₂^{•-}-positive sperm (Table 9b).

Table 9a: Relationship between the percentage of H₂O₂-positive sperm and semen parameters.

	Amplex			DCF		
	n	ρ	P-value	n	ρ	P-value
Sperm count ($\times 10^6$ /mL)	59	0.0621	0.6360	60	-0.075	0.5658
Sperm motility	58	-0.169	0.2050	59	-0.033	0.7994
Forward progression	58	-0.044	0.7413	59	-0.162	0.2161

Table 9b: Relationship between the percentage of H₂O₂-positive sperm and oxidative status.

	Amplex			DCF		
	n	ρ	P-value	n	ρ	P-value
Peroxidase-positive cells (×10 ⁶ /mL)	58	0.210	0.1092	60	0.0845	0.5162
ROS production in the ejaculate†	52	0.120	0.3899	53	0.169	0.2221
H ₂ O ₂ -positive sperm (Amplex) (%)				59	0.306	0.0199
H ₂ O ₂ -positive sperm (DCF) (%)	59	0.306	0.0199			
O ₂ ⁻ -positive sperm (DHE) (%)	59	0.201	0.1322	60	0.0273	0.8340
GSH activity in sperm†	52	0.220	0.1168	53	0.198	0.1527

† ×10⁴ RLU/20×10⁶ sperm.

Table 9c: Relationship between the percentage of H₂O₂-positive sperm and sperm apoptotic markers.

	Amplex			DCF		
	n	ρ	P-value	n	ρ	P-value
Δψ _m -negative sperm (%)	59	0.0562	0.6685	60	0.203	0.1198
Caspase ^a activation in sperm†	57	0.201	0.1322	58	0.218	0.100
TUNEL-positive sperm (%)	58	0.274	0.039	59	0.146	0.2649

Despite the significant correlation, the Wilcoxon test (Figure 12) revealed no significant difference between the medians of the two methods employed to determine the percentage of H₂O₂-positive sperm ($p = 0.1891$). Furthermore, Bland and Altman (Figure 13) and Mountain plots (Figure 14) revealed no significant graphical differences between the Amplex and DCF methods.

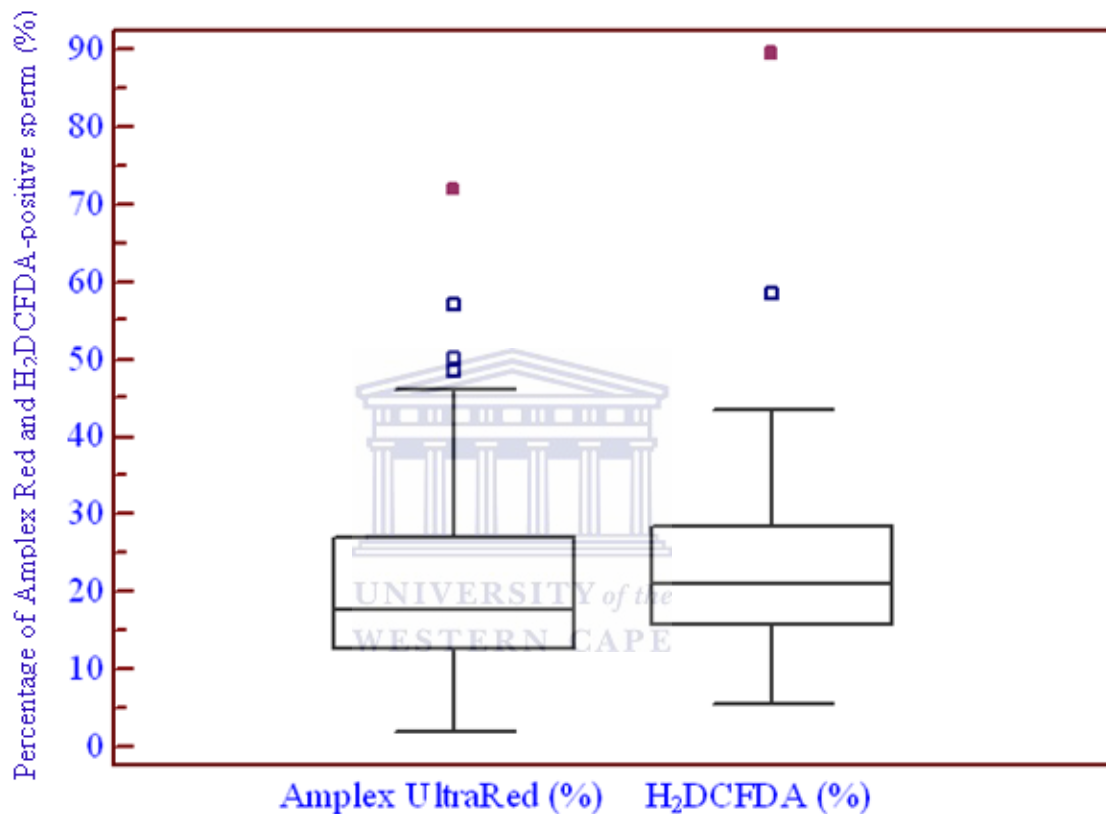


Figure 12 Comparison of the two fluorescence techniques for measuring H₂O₂ in sperm; Amplex UltraRed™ and HRP (Amplex UltraRed, $n = 59$) and 2,7-dihydrofluorescein diacetate (H₂DCFDA, $n = 59$). The Wilcoxon test for paired samples revealed no significant differences between the two techniques ($P = 0.1891$).

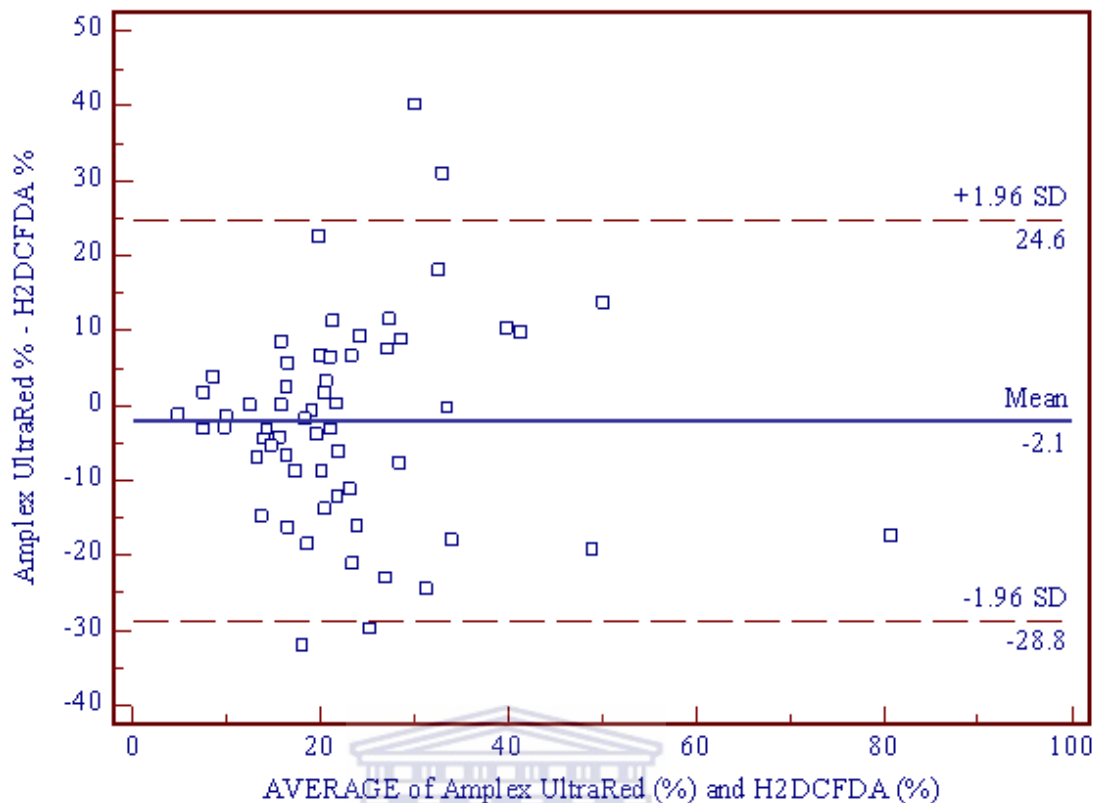


Figure 13 Bland and Altman plot showing the comparison of the two fluorescence methods for measuring H_2O_2 in spermatozoa. The differences between the two methods are sufficiently centred around zero to conclude that the methods have satisfactory agreement. A triangular shape of the distribution is visible. This means that the variation of the data depends on the magnitude of the measurement. Concordance correlation coefficient was 0.5088 (Pearson $\rho = 0.5747$; Bias correlation factor $C_b = 0.9886$).

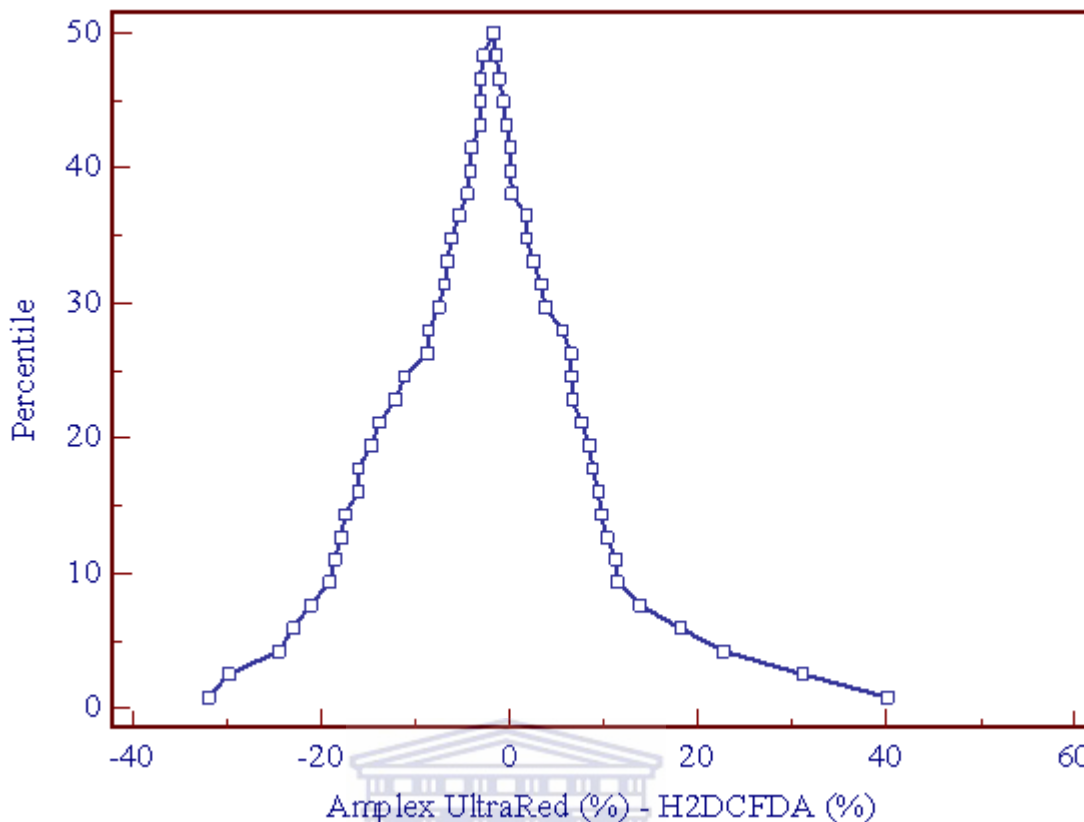


Figure 14 Mountain plot showing the comparison of the Amplex and DCF fluorescence methods used to detect H_2O_2 in sperm. The peak of the graph is close to zero, revealing that there is no significant difference between the two methods.

3.3.4 The percentage of $\text{O}_2^{\cdot-}$ -positive Sperm

The percentage of $\text{O}_2^{\cdot-}$ -positive sperm was positively correlated with the concentration of peroxidase-positive cells ($\rho = 0.336$; $P = 0.0098$), the percentage of $\Delta\psi_m$ -negative sperm ($\rho = 0.261$; $P = 0.0446$), and caspase-3/7 activity in sperm ($\rho = 0.457$; $P < 0.0001$). Despite the association with other sperm apoptotic markers, the percentage of $\text{O}_2^{\cdot-}$ -positive sperm did not have a significant correlation with the percentage of TUNEL-positive sperm ($\rho = 0.205$; $P = 0.205$). Furthermore, there was no significant correlation between the percentage of $\text{O}_2^{\cdot-}$ -positive sperm and the percentage of H_2O_2 -positive sperm (Amplex, $\rho = 0.220$; $P = 0.1168$; DCF, $\rho = 0.198$; $P = 0.1527$). In addition, this parameter had a generally non-significant negative correlation with semen parameters. Tables 10a to 10c show the relationship between the percentage of $\text{O}_2^{\cdot-}$ -positive sperm and other parameters.

Table 10a: Relationship between the percentage of O₂^{•-}-positive sperm and semen parameters.

	n	ρ	P-value
Sperm count (×10 ⁶ /mL)	60	-0.150	0.2487
Sperm motility	59	0.005	0.9674
Forward progression	59	-0.109	0.4054

Table 10b: Relationship between the percentage of O₂^{•-}-positive sperm and oxidative status.

	n	ρ	P-value
Peroxidase-positive cells (×10 ⁶ /mL)	60	0.336	0.0098
ROS production in the ejaculate†	53	-0.011	0.9358
H ₂ O ₂ -positive sperm (Amplex) (%)	59	0.140	0.2863
H ₂ O ₂ -positive sperm (DCF) (%)	60	0.027	0.8340
GSH activity in sperm†	53	0.093	0.5013

† ×10⁴ RLU/20×10⁶ sperm.

Table 10c: Relationship between the percentage of $O_2^{\cdot-}$ -positive sperm and sperm apoptotic markers.

	n	ρ	P-value
$\Delta\Psi_m$ -negative sperm (%)	60	0.261	0.0446
Caspase ^a activation in sperm [†]	58	0.457	<0.0001
TUNEL-positive sperm (%)	59	0.204	0.1207

^a caspase-3/7; [†] $\times 10^4$ RLU/ 20×10^6 sperm.

3.3.5 GSH activity in sperm

GSH activity in sperm was positively correlated with ROS production in the ejaculate ($\rho = 0.577$; $P < 0.0001$), the percentage of $\Delta\Psi_m$ -negative sperm ($\rho = 0.385$; $P = 0.0055$), and caspase-3/7 activation in sperm ($\rho = 0.529$; $P = 0.0002$). This parameter also had a significant negative correlation with the sperm count ($\rho = -0.435$; $P = 0.0017$). In general, GSH activity in sperm had a negative correlation with semen parameters, a non-significant positive correlation with oxidative status parameters, and a significant positive correlation with sperm apoptotic markers (Tables 11a to 11c).

Table 11a: Relationship between GSH activity in sperm and semen parameters.

	n	ρ	P-value
Sperm count ($\times 10^6$ /mL)	53	-0.435	0.0017*
Sperm motility	52	0.049	0.7287
Forward progression	52	-0.118	0.3996

Table 11b: Relationship between GSH activity in sperm and oxidative status.

	n	ρ	P-value
Peroxidase-positive cells ($\times 10^6$ /mL)	53	0.211	0.1275
ROS production in the ejaculate†	53	0.577	<0.0001
H ₂ O ₂ -positive sperm (Amplex) (%)	52	0.220	0.1168
H ₂ O ₂ -positive sperm (DCF) (%)	53	0.198	0.1527
O ₂ ^{•-} -positive sperm (DHE) (%)	53	0.0933	0.5013

† $\times 10^4$ RLU/20 $\times 10^6$ sperm.

Table 11c: Relationship between GSH activity in sperm and sperm apoptotic markers.

	n	ρ	P-value
$\Delta\Psi_m$ -negative sperm (%)	53	0.385	0.0055
Caspase ^a activation in sperm†	53	0.529	0.0002
TUNEL-positive sperm (%)	53	0.205	0.1399

^a caspase-3/7; † $\times 10^4$ RLU/20 $\times 10^6$ sperm.

3.4 Sperm Apoptotic Markers

3.4.1 The Percentage of $\Delta\Psi_m$ -negative Sperm

Tables 12a to 12c illustrate the relationship between the percentage of $\Delta\Psi_m$ -negative sperm and other parameters. The percentage of $\Delta\Psi_m$ -negative sperm had a weak positive correlation with the percentage of O₂^{•-}-positive sperm ($\rho = 0.261$; $P = 0.0446$) and a stronger positive correlation with GSH activity in sperm ($\rho = 0.385$; $P = 0.0055$). This parameter, even though it is an early marker of apoptosis, did not

correlate significantly with either caspase activation in sperm or the percentage of TUNEL-positive sperm.

Table 12a: Relationship between the percentage of $\Delta\psi_m$ -negative sperm and semen parameters.

	n	ρ	P-value
Sperm count ($\times 10^6$ /mL)	60	-0.150	0.2487
Sperm motility	59	0.005	0.9674
Forward progression	59	0.084	0.9493



Table 12b: Relationship between the percentage of $\Delta\psi_m$ -negative sperm and oxidative status.

	n	ρ	P-value
Peroxidase-positive cells ($\times 10^6$ /mL)	60	0.085	0.5121
ROS production in the ejaculate [†]	60	0.175	0.2072
H ₂ O ₂ -positive sperm (Amplex) (%)	59	0.056	0.6685
H ₂ O ₂ -positive sperm (DCF) (%)	60	0.203	0.1198
O ₂ ^{-•} -positive sperm (DHE) (%)	60	0.261	0.0446
GSH activity in sperm [†]	53	0.385	0.0055

[†] $\times 10^4$ RLU/ 20×10^6 sperm.

Table 12c: Relationship of the percentage of $\Delta\Psi_m$ -negative sperm with apoptotic markers.

	n	ρ	P-value
Caspase ^a activation in sperm†	58	0.205	0.1210
TUNEL-positive sperm (%)	59	0.204	0.1207

^a caspase-3/7; † $\times 10^4$ RLU/ 20×10^6 sperm.

3.4.2 Caspase-3/7 Activation in Sperm

There was no significant correlation between caspase-3/7 activity in sperm and semen parameters (Table 13a). However, caspase-3/7 activation in sperm had a significant positive correlation with the concentration of peroxidase-positive cells ($\rho = 0.527$; $P = 0.0001$), ROS production in the ejaculate ($\rho = 0.487$; $P = 0.0005$), the percentage of $O_2^{\cdot-}$ -positive sperm ($\rho = 0.457$; $P = 0.0006$), and GSH activity in sperm ($\rho = 0.529$; $P = 0.0005$) (Table 13b). Despite the strong correlation with the oxidative status in sperm and in the ejaculate, there was no significant correlation between this parameter and either the percentage of $\Delta\Psi_m$ -negative sperm or the percentage of TUNEL-positive sperm (Table 13c).

Table 13a: Relationship between caspase-3/7 activation in sperm and semen parameters.

	n	ρ	P-value
Sperm count ($\times 10^6$ /mL)	58	-0.243	0.067
Sperm motility	58	0.157	0.2345
Forward progression	58	-0.0996	0.4522

Table 13b: Relationship between caspase-3/7 activation and oxidative status.

	n	ρ	P-value
Peroxidase-positive cells ($\times 10^6/\text{mL}$)	58	0.527	0.0001
ROS production in the ejaculate [†]	52	0.487	0.0005
H ₂ O ₂ -positive sperm (Amplex) (%)	57	0.201	0.1322
H ₂ O ₂ -positive sperm (DCF) (%)	58	0.218	0.100
O ₂ ^{•-} -positive sperm (DHE) (%)	58	0.457	0.0006
GSH activity in sperm [†]	52	0.529	0.0002

[†] $\times 10^4$ RLU/ 20×10^6 sperm.

Table 13c: Relationship between caspase-3/7 activation and apoptotic markers.

	n	ρ	P-value
$\Delta\psi_m$ -negative sperm (%)	57	0.0087	0.9484
TUNEL-positive sperm (%)	57	0.0087	0.9484

^a caspase-3/7; [†] $\times 10^4$ RLU/ 20×10^6 sperm.

3.4.3 The percentage of TUNEL-positive Sperm

The percentage of TUNEL-positive sperm was positively correlated with ROS production in the ejaculate ($\rho = 0.331$; $P = 0.017$), and the percentage of H₂O₂-positive sperm (Amplex) ($\rho = 0.274$; $P = 0.039$). The relationship between the percentage of TUNEL-positive sperm and the other parameters is depicted in Tables 14a to 14c.

Table 14a: Relationship between the percentage of TUNEL-positive sperm and semen parameters.

	n	ρ	P-value
Sperm count ($\times 10^6/\text{mL}$)	59	-0.133	0.3098
Sperm motility	58	-0.057	0.6689
Forward progression	58	0.160	0.2277

Table 14b: Relationship between the percentage of TUNEL-positive sperm and oxidative status.

	n	ρ	P-value
Peroxidase-positive cells ($\times 10^6/\text{mL}$)	59	0.02	0.8817
ROS production in the ejaculate†	53	0.205	0.1399
H ₂ O ₂ -positive sperm (Amplex) (%)	58	0.274	0.039
H ₂ O ₂ -positive sperm (DCF) (%)	59	0.146	0.2649
O ₂ ^{-•} -positive sperm (DHE) (%)	59	-0.034	0.7946
GSH activity in sperm†	53	0.205	0.1399

† $\times 10^4$ RLU/ 20×10^6 sperm.

Table 14c: Relationship between the percentage of TUNEL-positive sperm and sperm apoptotic markers.

	n	ρ	P-value
$\Delta\psi_m$ -negative sperm (%)	59	0.204	0.1207
Caspase ^a activation in sperm†	57	0.0087	0.9484

^a caspase-3/7; † $\times 10^4$ RLU/ 20×10^6 sperm.



CHAPTER FOUR

DISCUSSION

It is now generally accepted that ROS-mediated damage to human sperm is a significant contributing factor in the aetiology of impaired sperm function and male infertility (Henkel et al., 2003b; Moustafa et al., 2004; Nallela et al., 2005), and extensive studies have been conducted to establish the link between oxidative stress and defective sperm function by measuring; ROS production by sperm and by contaminating leukocytes in the ejaculate (Henkel et al., 2003a); sperm DNA damage and its effect on fertilizing potential of the male germ cell (Sun et al., 1997; Alvarez et al., 2002; Erenpreiss et al., 2002; Henkel et al., 2003b); lipid peroxidation (Aitken et al., 2007; Cosci et al., 2008); and seminal antioxidant capacity (Pasqualotto et al., 2000; Sharma et al., 2001). Furthermore, ROS have been recently implicated as possible mediators of apoptosis in human spermatozoa (Ramos and Wetzels, 2001; Moustafa et al., 2004). However, data on the effect of male genital tract infection, as a significant cause of oxidative stress in the male reproductive tract, on the function of spermatozoa and the integrity of the sperm genome is scant.

Hence, in this study, selected biological assays were performed in order to investigate the relationship between male genital tract infection, the oxidative status in spermatozoa and the ejaculate, and markers of apoptosis in the male gamete.

4.1 Conventional Semen Parameters

The influence of ROS on the quality of semen is underpinned by lipid peroxidation (Aitken et al., 1993), the induction of which results in loss of sperm plasma membrane fluidity (Whittington et al., 1999), decreased axonemal protein phosphorylation (de Lamirande and Gagnon, 1992), which leads to impaired sperm motility (Agarwal et al., 2003). Furthermore, the prolonged exposure of the seminiferous epithelium to high levels of ROS – produced by either immature sperm

or activated leukocytes – damages these tubules and contributes to testicular atrophy, reduction of gamete production, and low sperm count (Aziz et al., 2004).

In this study, sperm count was negatively correlated with ROS in the ejaculate ($\rho = -0.296$; $P = 0.033$), and with sperm GSH activity ($\rho = -0.435$; $P = 0.0017$). This inverse relationship between sperm count and ROS in the ejaculate was demonstrated in previous studies (Ochsendorf et al., 1994; Henkel and Schill, 1998; Henkel et al., 2005). These results confirm that excessive ROS impairs, not only sperm function, but also sperm production, depending on the site of ROS production. The negative correlation of sperm count with GSH activity in sperm indicates that reduced glutathione may be more active in sperm from men with poor semen parameters.

4.2 Oxidative Status in the Ejaculate and Sperm

4.2.1 Peroxidase-positive Leukocytes

The biological role of leukocytes in the ejaculate is subject to on-going controversy despite the high incidence of these white blood cells among infertile men (WHO, 1999; Zorn et al., 2000; Henkel et al., 2007). In the male reproductive tract, increased numbers of seminal leukocytes may result from disturbed spermatogenesis (Wolff et al., 1990; Thomas et al., 1997), the harmful influence of environmental factors such as smoking (Close et al., 1990), and atypical sexual behavior or prolonged sexual abstinence (Blackwell and Zaneveld, 1992; Anderson, 1995). However, the most common reason for infiltration of leukocytes into the ejaculate is genitourinary infection/inflammation (Fraczek and Kurpisz, 2007).

Although the role of seminal leukocytes is in question, it is without doubt that leukocytes are the main source of ROS in the ejaculate (Plante et al., 1994). Not surprisingly, this study revealed that the concentration of peroxidase-positive cells was positively correlated with ROS in the ejaculate ($\rho = 0.378$; $P = 0.0064$). Furthermore, peroxidase-positive cells were also positively correlated with the percentage of $O_2^{\cdot-}$ -positive sperm ($\rho = 0.336$; $P = 0.0098$) as determined using dihydroethidium. Previously, other studies have demonstrated a similar association between seminal leukocytes and ROS production in sperm (Saleh et al., 2002b; Henkel et al., 2003a; 2005).

The present study also demonstrated a strong positive correlation between the number of peroxidase-positive cells and caspase-3/7 activity in the spermatozoa ($\rho = 0.527$; $P < 0.0001$). Active caspase-3 in human sperm was reported by Weng et al. (2002) but this was not correlated to the number of leukocytes. As effector caspases, caspase-3 and -7 play a central role in apoptosis and, considering that seminal leukocytes are associated with excessive ROS production, it is conceivable that ROS derived from leukocytes may induce apoptosis in sperm by triggering caspase activation. Indeed, a positive correlation between ROS production in the ejaculate and caspase-3 and -9 has been demonstrated (Wang et al., 2003).

Interestingly, in this study there was no correlation between the number of peroxidase-positive cells and the percentage of TUNEL-positive spermatozoa ($\rho = 0.0195$; $P = 0.8817$). DNA fragmentation in spermatozoa may be caused by internal influences like apoptosis or ROS production in the sperm (Henkel et al., 2003b), or external inducers like activated leukocytes (Erenpreiss et al., 2002). However, ROS production in the ejaculate by leukocytes seems to have a lesser direct influence on sperm DNA fragmentation (Henkel et al., 2003b). Nevertheless, since even low levels of ROS can cause DNA damage in spermatozoa, the potential of leukocyte-derived oxidative stress to damage the male genome should not be ruled out or underestimated. Seminal leukocytes, activated by stimuli such as inflammation or pathogens, respond with an oxidative burst characterized by the production of high amounts of oxidants which include hydrogen peroxide (Aitken et al., 1994) and this uncharged oxygen derivative can easily permeate plasma membranes and damage sperm DNA.

Some reports indicate that the presence of leukocytes in the ejaculate has no adverse influence on semen quality or fertilization potential of spermatozoa (el-Demiry et al., 1986; Tomlinson et al., 1992; Tomlinson et al., 1993), and some studies even suggest positive roles for these cells in the removal of dead or defective sperm from the male reproductive tract (Tomlinson et al., 1992; Ricci et al., 2002). However, most studies demonstrate the relationship between the increased number of leukocytes in semen and the deterioration of semen parameters (Wolff et al., 1990; Yanushpolsky et al., 1996) or fertilizing ability of sperm (Vogelpoel et al., 1991; Krausz et al., 1994; Sukcharoen et al., 1995), mainly by reducing sperm motility and damaging the potential for sperm to penetrate the oocyte (Maruyama et al., 1985; Kovalski et al.,

1992). Decreased sperm fertilizing ability may then be an early result of excessive ROS production by leukocytes, and prolonged oxidative stress in the male reproductive tract may result in impaired spermatogenesis and damaged sperm DNA (Fraczek and Kurpisz, 2007).

4.2.2 Cutoff Values for Leukocytospermia

According to the World Health Organization (WHO, 1999), a condition in which the number of leukocytes exceeds $1 \times 10^6/\text{mL}$ of ejaculate is defined as leukocytospermia, and this is considered to be the threshold value above which sperm morphology and function are impaired (Menkveld and Kruger, 1998). However, this value is empirical and recent reports suggest that at much lower cut-off values the number of leukocytes in the ejaculate is significantly correlated with sperm dysfunction (Henkel and Schill, 1998; Menkveld and Kruger, 1998; Saleh et al., 2001; Punab et al., 2003; Henkel et al., 2005). Data from the current study showed that at the cut-off value of $\geq 0.25 \times 10^6$ leukocytes/mL of semen there was a strongly significant correlation between the number of leukocytes in the ejaculate and caspase-3/7 activation in sperm, GSH activity in sperm, ROS in the ejaculate, the percentage of sperm with disrupted mitochondrial membrane potential ($\Delta\Psi_m$), and the percentage of TUNEL-positive sperm (Tables 7a-7c). Thus, this study confirms that even in non-leukocytospermic patients, oxidative stress can occur which can trigger apoptosis, caspase-3/7 activation, and induce sperm DNA fragmentation.

Plante et al. (1994) demonstrated that seminal leukocyte counts of $5 \times 10^6/\text{mL}$ of ejaculate did not impair sperm motility unless the leukocytes were activated. On the other hand, Aitken et al. (1995) reported that leukocytes were harmful to Percoll-separated sperm at counts of greater than $0.2 \times 10^6/\text{mL}$ of semen. This highlights two points regarding leukocytes in the ejaculate: firstly, it is not only the leukocyte concentration in semen but rather the degree of their activation that determines the final effect of oxidative stress on spermatozoa; secondly, that seminal plasma affords massive antioxidant protection to spermatozoa. These factors are important during assisted reproduction when spermatozoa are separated from seminal plasma but remain proximal to leukocytes in antioxidant-depleted media. Therefore, sperm separation methods should not only include the removal of leukocytes from seminal

fluid (Henkel et al., 2005), but also the addition of the antioxidants to sperm separation media (Baker et al., 1996).

4.2.3 ROS production in the Ejaculate and in Spermatozoa

In this study, ROS production in the ejaculate was correlated positively with the number of peroxidase-positive cells ($\rho = 0.378$; $P = 0.0064$), sperm GSH activity ($\rho = 0.577$; $P < 0.0001$), caspase-3/7 activity in sperm ($\rho = 0.487$; $P = 0.0005$), and the percentage of TUNEL-positive sperm ($\rho = 0.331$; $P = 0.0171$). These findings confirm previous reports that ROS production in the ejaculate, mostly a consequence of activated leukocytes (Aitken et al., 1994), is a possible inducer of apoptosis in human sperm; a process in which DNA fragmentation is a hallmark (Wang et al., 2003).

Reactive oxygen species play a significant role in the pathophysiology of sperm dysfunction (Aitken, 1999; Agarwal et al., 2003) and seminal oxidative stress status could be an important diagnostic and prognostic tool in infertility treatment. Levels of ROS production in the ejaculate can be measured by a chemiluminescence assay using luminol (5-amino-2,5-dihydro-1,4-phthalazinedione) and a luminometer (Shekarriz et al., 1995). ROS production in the ejaculate is reported to be higher in infertile men than in their fertile counterparts (Allamaneni et al., 2005; Nallella et al., 2005; Athayde et al., 2007; Das et al., 2008) and, not surprisingly, the highest ROS production was found in infertile leukocytospermic patients (Allamaneni et al., 2005; Athayde et al., 2007).

Although no receiver operated characteristic (ROC) analysis was performed to determine the threshold values for oxidative stress in this study, other authors have suggested seminal ROS cut-off values. Allamaneni et al. (2005) described all seminal ROS levels of 18.5×10^4 RLU per 20×10^6 sperm as the optimal cut-off value for oxidative stress, while other studies reported a optimal cut-off of 10×10^4 RLU per 20×10^6 sperm for washed semen (Shekarriz et al., 1995; Athayde et al., 2007) and 51.5×10^4 RLU per 20×10^6 sperm for semen with leukocytes (Athayde et al., 2007). Undoubtedly, the accurate assessment of ROS production levels in the ejaculate may

augment the diagnosis of infertility in cases where oxidative stress plays a major role and, to this regard, a consensus on normal levels of seminal ROS is essential.

In order to detect ROS production from spermatozoa, it is necessary to separate these cells from contaminating leukocytes, and this can be readily achieved using magnetic beads coated with a monoclonal antibody directed against the common leukocyte antigen, CD45 (Aitken et al., 1996). Previous studies have demonstrated that ROS production by the spermatozoa of oligozoospermic patients is greater than that generated by spermatozoa of fertile donors (Aitken et al., 1992), and the level of ROS generation was strongly correlated with the quality of the original semen sample as reflected in the movement characteristics of the spermatozoa and their morphology, as well as sperm count (Gil-Guzman et al., 2001; Aziz et al., 2004).

Immature spermatozoa are well characterized sources of ROS in the ejaculate and a negative correlation between ROS production and semen quality has been documented (Gil-Guzman et al., 2001; Aziz et al., 2004). It has been hypothesized that abnormal spermatozoa with cytoplasmic retentions are significant generators of ROS, since they retain an excess of cytoplasmic enzymes that are involved in glucose metabolism such as glucose-6-phosphate dehydrogenase (Aitken, 1999). Moreover, it has been confirmed that, when semen is fractionated by a density gradient method, the layer with the highest percentage of immature sperm produces the most ROS (Gil-Guzman et al., 2001) and this ROS generation is significantly correlated with the extent of DNA damage in mature spermatozoa (Ollero et al., 2001; O'Brien and Zini, 2005). Spermatozoa also generate ROS from the mitochondrial electron transport chain (ETC) during cellular respiration, with an estimated 2% of consumed oxygen being converted into the superoxide anion via this route (Boveris and Chance, 1973; Koppers et al., 2008).

In this study, the percentage of $O_2^{\cdot-}$ -positive sperm was positively correlated with the percentage of sperm with disrupted $\Delta\psi_m$ ($\rho = 0.261$; $P = 0.0446$), and caspase-3/7 activation in sperm ($\rho = 0.457$; $P < 0.0001$). These parameters are indicative of apoptosis in spermatozoa and, since the most likely source of $O_2^{\cdot-}$ in sperm is mitochondrial oxidative phosphorylation, programmed death of the human male germ cell is executed via the mitochondrial (intrinsic) apoptotic pathway.

This study revealed that the percentage of H₂O₂-positive sperm (Amplex) was positively correlated with the percentage of TUNEL-positive sperm ($\rho = 0.274$; $P = 0.0388$). Although no correlation between sperm O₂^{•-} production and the generation of H₂O₂ could be shown here, it is known that O₂^{•-} is dismutated to H₂O₂ by the enzyme superoxide dismutase. A possible explanation for the lack of correlation, in this study, between the generation of these two reactive oxygen species by sperm, is that the membrane-permeating H₂O₂ was produced by seminal leukocytes. Furthermore, the activity of sperm antioxidants, such as glutathione, may also distort the relationship between mitochondria-derived O₂^{•-} and H₂O₂ in spermatozoa.

4.2.4 GSH activity in Sperm

Given the potentially toxic nature of ROS to spermatozoa, it is important that the oxidants are rapidly scavenged before they trigger lipid peroxidation or DNA damage. One of the most significant antioxidants in the modulation of ROS levels in mammalian cells is reduced glutathione (Droge et al., 2002). Data from the present study revealed that the activity of GSH in sperm was positively correlated with ROS production in the ejaculate ($\rho = 0.577$; $P < 0.0001$), the percentage of sperm with disrupted $\Delta\Psi_m$ ($\rho = 0.385$; $P = 0.0055$), and caspase-3/7 activation in sperm ($\rho = 0.529$; $P = 0.0002$). The association of this antioxidant with both, oxidative status and sperm apoptotic markers, points to an up-regulation of glutathione metabolism to counter the damaging effects of ROS, a relationship demonstrated in previous studies (Lewis et al., 1997; Ebisch et al., 2006). In addition, glutathione has been suggested as a global marker for sperm fertilization capacity (Foresta et al., 2002).

Glutathione therapy has been reported to be beneficial in some andrological pathologies. Lenzi et al. (1992) administered glutathione to 11 infertile patients, via intramuscular injections, and reported a significant improvement in sperm motility pattern. However, Donnelly et al. (2000) reported no significant effect of glutathione on sperm motility and DNA damage *in vitro*. Ochsendorf et al. (1998) demonstrated that men with oligozoospermia had significantly lower sperm glutathione concentration than normozoospermic men. In contrast, Garrido et al. (2004) reported

that there was no significant difference between glutathione concentration in sperm from fertile and subfertile patients. Therefore, there is need for more investigations to improve our understanding of the role of glutathione in the function of spermatozoa.

4.3 Apoptotic Markers in Spermatozoa

Apoptosis is the underlying process for maintaining homeostasis during spermatogenesis (Sakkas et al., 2003; Giampietri et al., 2005) and, recently, several reports have suggested that the apoptotic process also occurs in mature sperm (Oehninger et al., 2003; Lachaud et al., 2004). These studies were based on the presence of biochemical markers of apoptosis which include mitochondrial membrane potential disruption (Barroso et al., 2006), plasma membrane translocation of phosphatidylserine (Kotwicka et al., 2008), the activity of aspartic acid-derived cysteine proteases (caspases) (Grunewald et al., 2005), DNA fragmentation (Sakkas et al., 2002; Tesarik et al., 2006), and the presence of pro- and anti-apoptotic proteins (Paasch et al., 2003).

In this study, $\Delta\psi_m$ disruption, caspase-3/7 activation and DNA fragmentation, were investigated as suitable markers of apoptosis in spermatozoa: the first parameter as an early event of this process, and the latter two as executioner and late event, respectively.

4.3.1 Disruption of the MMP ($\Delta\psi_m$)

The sperm mitochondria are an important focus of ROS-induced damage and, since intact $\Delta\psi_m$ is required for mitochondrial ATP production, this damage can result in the loss of sperm motility (de Lamirande and Gagnon, 1992). The disruption of $\Delta\psi_m$ is also a general feature of early stage apoptosis that precedes other manifestations of this process such as DNA fragmentation (Kroemer et al., 1997).

In the present study, the percentage of sperm with $\Delta\psi_m$ disruption was positively correlated with the percentage of $O_2^{\cdot-}$ -positive sperm ($\rho = 0.261$; $P = 0.0045$) and the activity of GSH in sperm ($\rho = 0.385$; $P = 0.0055$). This appears to indicate that sperm $\Delta\psi_m$ can be disrupted by excessive $O_2^{\cdot-}$ production. Schulz et al. (2009) reported that

incubation of sperm from healthy donors with *E. coli* can induce significant $\Delta\psi_m$ disruption which was associated with diminished sperm motility and vitality. This demonstrates that ROS generated from outside the spermatozoa, for example, in patients with male genital tract infection/inflammation or leukocytospermia, can destabilize mitochondrial function and trigger more internal ROS production which can lead to apoptosis in spermatozoa. This is in agreement with reports by several authors that externally-derived ROS may act as apoptosis mediators (Armstrong et al., 1999; Vicari, 1999; Agarwal and Said, 2005; Villegas et al., 2005). Other studies have reported significant correlation between sperm $\Delta\psi_m$ and sperm motility (Marchetti et al., 2002; Wang et al., 2003; Zhang et al., 2008), and caspase-3 activity (Said et al., 2004; Angelopoulou et al., 2007), and sperm mitochondrial membrane potential has been recommended as a sensitive evaluation for sperm quality (Marchetti et al., 2002; 2004).

The significance of the positive correlation between the percentage of sperm with $\Delta\psi_m$ disruption and sperm GSH activity is not clear. However, given the association of sperm GSH activity with oxidative status in the ejaculate and sperm caspase-3/7 activity, the correlation with sperm $\Delta\psi_m$ suggests an increase in GSH activity in the response to oxidative stimuli in the sperm or in seminal plasma.

4.3.2 Caspase-3/7 activation in Sperm

It is now established that the central component of the apoptotic machinery involves one or more members of a family of aspartic acid-directed cysteine proteases called caspases (Thornberry and Lazebnik, 1998). The activity of caspases in human spermatozoa has been positively correlated with oxidative stress (Wang et al., 2003) and DNA fragmentation (Weng et al., 2002) in infertile patients.

In this study, sperm caspase-3/7 activation was positively correlated with the percentage of peroxidase-positive cells ($\rho = 0.527$; $P = 0.0001$), ROS production in the ejaculate ($\rho = 0.487$; $P = 0.0005$), the percentage of $O_2^{\bullet-}$ -positive sperm ($\rho = 0.457$; $P = 0.0006$), and GSH activity in sperm ($\rho = 0.529$; $P = 0.0002$). Clearly, there is a significant strong relationship between the activity of caspase-3/7 and the oxidative status in the ejaculate and in spermatozoa. Seminal leukocytes are the

principal source of ROS in the ejaculate, and they have been linked with oxidative stress even in non-leukocytospermic patients (Henkel et al., 2003a). Therefore, it can be hypothesized that these cells can induce apoptosis via the caspase cascade. Recent studies have revealed that activated caspase-3 was localized exclusively to the midpiece area of positively-stained sperm (Weng et al., 2002; Almeida et al., 2005; Kotwicka et al., 2008), indicating that caspase-dependant apoptosis in sperm may be sequestered in a region where mitochondria and cytoplasmic droplets would be located. Significant correlation between caspase-3 activity and DNA fragmentation has been reported (Weng et al., 2002) but this association may not be consistent, as reflected by the current study. Some studies have demonstrated that apoptosis may not significantly contribute to sperm DNA damage (Moustafa et al., 2004) while others have even reported that oxidative stress-induced apoptosis may be caspase-independent (Grunewald et al., 2005).

Understanding the mechanism of caspase regulation is intimately linked to the ability to manipulate apoptosis for therapeutic gain (Thornberry and Lazebnik, 1998; Brill et al., 1999). Therefore, given the conflicting reports in this and other studies on the relationship between caspase activity and sperm function, further investigation is indicated.

UNIVERSITY of the
WESTERN CAPE

4.3.3 Sperm DNA Fragmentation

The success of fertilization and the subsequent development of the embryo in humans depend, partly, on the integrity of the sperm DNA (Ahmadi and Ng, 1999). Spermatozoa of infertile men exhibit substantially more DNA damage compared to sperm of fertile men (Evenson et al., 1999; Irvine et al., 2000), and clinical evidence shows that damage to the male genome may adversely affect reproductive outcomes (Zini et al., 2001; Duran et al., 2002; Henkel et al., 2004). However, our understanding of the causes of sperm DNA damage remains rudimentary and, of the several proposed hypotheses of causes of DNA damage in human spermatozoa, the major theories are; poor chromatin packaging, abortive apoptosis, and oxidative stress.

Poor protamination of sperm DNA during spermatogenesis is clearly a major factor in determining the susceptibility of sperm chromatin to damage (Nasr-Esfahani et al., 2005; Carrell et al., 2006). This incomplete packaging of sperm chromatin has been reported in 5-15% of infertile men (Carrell and Liu, 2001; Oliva, 2006), and it has been linked with poor fertilizing potential and DNA fragmentation (Cho et al., 2003; Aoki et al., 2006). Furthermore, protamination of sperm chromatin appears to protect sperm DNA from oxidative stress by sequestering transition metals that are capable of promoting sperm DNA fragmentation (Liang et al., 1999). Therefore, this function may account for the extensive DNA damage observed in spermatozoa of with incomplete protamine-histone transition (Bianchi et al., 1993).

In addition to poor chromatin packaging, DNA fragmentation in spermatozoa of infertile men may involve an incomplete apoptotic pathway that is mediated by the cell surface protein; fibroblast associated (Fas) death receptor (Sakkas et al., 1999). The induction of apoptosis via the Fas pathway is an important mechanism by which Sertoli cells regulate the number and quality of germ cells, particularly under stressful conditions (Boekelheide et al., 2000). Sakkas et al. (1999) proposed that some of the spermatozoa with DNA damage exhibited Fas because they had been earmarked for elimination, but had escaped apoptosis; hence this process is called 'abortive apoptosis'. However, despite reports of higher incidence of Fas in sperm of men with poor semen parameters (Sakkas et al., 2002), there is no consensus on the percentage of Fas-positive sperm in the human ejaculate (Henkel et al., 2004). In addition, Castro et al. (2004) found no significant Fas in ejaculated sperm of both normozoospermic and non-normozoospermic men, while McVicar et al. (2004) could demonstrate Fas in sperm of infertile men only. Furthermore, the presence of Fas in human ejaculated sperm is related to, neither DNA damage as detected by the Comet assay, nor fertilization and pregnancy (Henkel et al., 2004; McVicar et al., 2004).

Alternatively, sperm DNA damage has been associated with high levels of reactive oxygen species (Barroso et al., 2000; Irvine et al., 2000). Sperm DNA fragmentation has been correlated with sperm-derived ROS (Henkel et al., 2003b) and this may be reflective of an underlying defect of spermatogenesis as it is sperm with cytoplasmic retentions that are largely responsible for sperm free radical generation (Gomez et al., 1996). Male genital tract infection associated with leukocytospermia has also been associated with DNA damage in spermatozoa (Sharma et al., 2001; Alvarez et al.,

2002; Erenpreiss et al., 2002) although this relationship is not always demonstrated (Henkel et al., 2003b). The negative effects of seminal leukocytes are mediated by oxidative stress, of which the stable H_2O_2 molecule is the most pernicious reactive oxygen species, particularly to spermatozoa of infertile men (Hughes et al., 1996).

In the current study, the percentage of TUNEL-positive sperm was positively correlated with ROS production in the ejaculate ($\rho = 0.331$; $P = 0.017$) and the percentage of H_2O_2 -positive sperm (Amplex UltraRed) ($\rho = 0.274$; $P = 0.039$). Data from this study lends some support to the oxidative stress hypothesis of sperm DNA damage but the evidence is inconclusive as there is no correlation of sperm DNA damage with $\Delta\psi_m$, caspase activation or the concentration of seminal leukocytes. Some studies have also demonstrated that TUNEL positivity and apoptotic markers may not always correlate (Sakkas et al., 2002; Moustafa et al., 2004). This suggests that DNA fragmentation may be independent of classical apoptotic pathways, and that ROS may directly damage nuclear DNA in sperm.

4.4 Conclusions and Future Outlook

This study confirms that leukocytes are the major source of ROS production in the ejaculate, and that they may be related to the generation of $\text{O}_2^{\cdot-}$ in spermatozoa. Despite the positive correlation between ROS production in the ejaculate and sperm caspase-3/7 activity, the association between seminal oxidative stress and sperm apoptotic markers is rather tenuous. However, there is a relationship between sperm-derived $\text{O}_2^{\cdot-}$ and sperm $\Delta\psi_m$. In the light of these links, it would be important to investigate further what is going on in sperm mitochondria under the influence extrinsic ROS generated by leukocytes in the course of male genital tract infection/inflammation.

In addition, the superoxide anion may have a more prominent contribution to apoptosis than previously reported. The generation of this free radical in somatic cells is thought to involve electron leakage from the mitochondrial electron transfer chain (ETC) during normal cellular respiration, with an estimated 2% of consumed oxygen being converted to $\text{O}_2^{\cdot-}$ in this manner (Boveris and Chance, 1973). Normally, this ROS production is balanced by the antioxidant store within the cytoplasm and the

mitochondrial matrix (Andreyev et al., 2005). However, excessive mitochondrial ROS generation may outstrip the limited antioxidant defences, resulting in oxidative stress. This intrinsic generation of $O_2^{\cdot -}$ has been described in human spermatozoa by Koppers et al. (2008) and it has been positively correlated with poor motility by the same authors.

Commonly overlooked is the fact that sperm carry two different kinds of DNA; nuclear and mitochondrial. Mitochondria, which are located in the sperm mid-piece, are the energy generators of spermatozoa and supply adenosine triphosphate which helps propel the sperm towards the oocyte for fertilization. Mitochondrial DNA (mtDNA) encodes for two ribosomal RNAs, 22 transfer RNAs, and 13 polypeptides that are essential for mitochondrial respiration and oxidative phosphorylation associated with the electron transfer chain. Current understanding of the role of mitochondria in disease is expanding, and it is becoming clear that mitochondrial dysfunction may be a significant factor in some cases of male infertility and asthenozoospermia (Følgero et al., 1993; Ruiz-Pesini et al., 2000). In the context of sperm function mitochondria are important, not only because they are the powerhouse of the germ cell, but because as the site of oxidative phosphorylation they are a major source of electron leakage from the ETC (Chance et al., 1979; Giulivi et al., 1995) which is a significant contributor to internal ROS production by sperm (Koppers et al., 2008). In addition, mitochondria are involved in the regulation of apoptosis by means of the mitochondrial or intrinsic pathway (Gogvadze and Orrenius, 2006), and in sperm this process is characterized by the loss of mitochondrial membrane potential (Marchetti et al., 2002; Zhang et al., 2008), caspase-3 activity (Weng et al., 2002), and nuclear DNA fragmentation (Wang et al., 2003). Furthermore, mtDNA is located on the matrix side of the mitochondrial inner membrane (Antunes et al., 1996) and consequently it is vulnerable to oxidative damage by mitochondrial-derived ROS. Mitochondrial DNA is more susceptible to oxidation by ROS because, unlike nuclear DNA, it lacks protective packaging proteins such as protamines and histones (Marchesi and Feng, 2007). Moreover, mtDNA replicates at a faster rate without proper proofreading and only has a basic repair mechanism (Croteau et al., 1999) and this makes the genome prone to mutations and deletions in spermatozoa (O'Connell et al., 2002). Since mtDNA is essential to the energy generation role of mitochondria in

spermatozoa, it is indispensable for successful fertilization and there is need to gather more data on the effects of mtDNA damage on male infertility.

In conclusion, this study has demonstrated a clear association between the concentration of seminal leukocytes and ROS production in the ejaculate and in spermatozoa. Moreover, seminal leukocyte concentration was strongly correlated with the effector caspases; -3 and -7. Therefore, there is a case for a relationship between male genital tract infection and sperm oxidative stress, which may lead to sperm apoptosis via the mitochondrial pathway.



CHAPTER FIVE

REFERENCES

Agarwal A, Saleh RA, Bedaiwy MA. 2003. Role of reactive oxygen species in the pathophysiology of human reproduction. *Fertil Steril* 79:829-843.

Agbaje IM, Rogers DA, McVicar CM, McClure N, Atkinson AB, Mallidis C, Lewis SE. 2007. Insulin dependent diabetes mellitus: Implications for male reproductive function. *Hum Reprod* 22:1871-1877.

Ahmadi A, Ng SC. 1999. Fertilizing ability of DNA-damaged spermatozoa. *J Exp Zool* 284:696-704.

Aitken J, Fisher H. 1994. Reactive oxygen species generation and human spermatozoa: The balance of benefit and risk. *BioEssays* 16:259-267.

Aitken RJ, Baker HW. 1995. Seminal leukocytes: Passengers, terrorists or good Samaritans? *Hum Reprod* 10:1736-1739.

Aitken RJ, Buckingham D, West K, Wu FC, Zikopoulos K, Richardson DW. 1992. Differential contribution of leucocytes and spermatozoa to the generation of reactive oxygen species in the ejaculates of oligozoospermic patients and fertile donors. *J Reprod Fertil* 94:451-462.

Aitken RJ, Clarkson JS. 1987. Cellular basis of defective sperm function and its association with the genesis of reactive oxygen species by human spermatozoa. *J Reprod Fertil* 81:459-469.

Aitken RJ, De Iuliis GN. 2007. Origins and consequences of DNA damage in male germ cells. *Reprod Biomed Online* 14:727-733.

Aitken RJ, Gordon E, Harkiss D, Twigg JP, Milne P, Jennings Z, Irvine DS. 1998. Relative impact of oxidative stress on the functional competence and genomic integrity of human spermatozoa. *Biol Reprod* 59:1037-1046.

Aitken RJ, Harkiss D, Buckingham D. 1993. Relationship between iron-catalysed lipid peroxidation potential and human sperm function. *J Reprod Fertil* 98:257-265.

Aitken RJ, Krausz C. 2001. Oxidative stress, DNA damage and the Y chromosome. *Reproduction* 122:497-506.

Aitken RJ, West K, Brindle J. 1996. On the use of paramagnetic beads and ferrofluids to assess and eliminate the leukocytic contribution to oxygen radical generation by human sperm suspensions. *Am J Reprod Immunol* 35:541-551.

Aitken RJ, West K, Buckingham D. 1994. Leukocytic infiltration into the human ejaculate and its association with semen quality, oxidative stress, and sperm function. *J Androl* 15:343-352.

Aitken RJ, Wingate JK, De Iuliis GN, McLaughlin EA. 2007. Analysis of lipid peroxidation in human spermatozoa using BODIPY C₁₁. *Mol Hum Reprod* 13:203-211.

Aitken RJ. 1994. The free radical theory of male infertility. *Reprod Fertil Dev* 6:19-23.

Aitken RJ. 1999. The Amoroso lecture: The human spermatozoon - a cell in crisis? *J Reprod Steril* 115:1-7.

Allamaneni SS, Agarwal A, Nallella KP, Sharma RK, Thomas AJ Jr, Sikka SC. 2005. Characterization of oxidative stress status by evaluation of reactive oxygen species levels in whole semen and isolated spermatozoa. *Fertil Steril* 83:800-803.

Almeida C, Cardoso F, Sousa M, Viana P, Goncalves A, Silva J, Barros A. 2005. Quantitative study of caspase-3 activity in semen and after swim-up preparation in relation to sperm quality. *Hum Reprod* 20:1307-1313.

Alper MM, Lee GS, Seibel MM, Smith D, Oskowitz SP, Ransil BJ, Taymor ML. 1985. The relationship of semen parameters to fertilization in patients participating in a program of *in vitro* fertilization. *J in-Vitro Fertil Embryo Transfer* 2:217-223.

Alvarez JG, Sharma RK, Ollero M, Saleh RA, Lopez MC, Thomas AJ Jr, Evenson DP, Agarwal A. 2002. Increased DNA damage in sperm from leukocytospermic semen samples as determined by the sperm chromatin structure assay. *Fertil Steril* 78:319-329.

Alvarez JG, Storey BT. 1992. Evidence of increased lipid peroxidative damage and loss of superoxide dismutase activity as a mode of sublethal cryodamage to human sperm during cryopreservation. *J Androl* 13:232-241.

Alvarez JG, Touchstone JC, Blasco L, Storey BT. 1987. Spontaneous lipid peroxidation and production of hydrogen peroxide and superoxide in human spermatozoa. superoxide dismutase as major enzyme protectant against oxygen toxicity. *J Androl* 8:338-348.

Anderson DJ. 1995. Should male infertility patients be tested for leukocytospermia? *Fertil Steril* 63:246-248.

Andreyev AY, Kushnareva YE, Starkov AA. 2005. Mitochondrial metabolism of reactive oxygen species. *Biochemistry (Mosc)* 70:200-214.

Angelopoulou R, Plastira K, Msaouel P. 2007. Spermatozoal sensitive biomarkers to defective protaminosis and fragmented DNA. *Reprod Biol Endocrinol* 30:5-36.

Antunes F, Salvador A, Marinho HS, Alves R, Pinto RE. 1996. Lipid peroxidation in mitochondrial inner membranes. I. An integrative kinetic model. *Free Radic Biol Med* 21:917-943.

Aoki VW, Carrell DT. 2003. Human protamines and the developing spermatid: Their structure, function, expression and relationship with male infertility. *Asian J Androl* 5:315-324.

Aoki VW, Liu L, Jones KP, Hatasaka HH, Gibson M, Peterson CM, Carrell DT. 2006. Sperm protamine 1/protamine 2 ratios are related to in vitro fertilization pregnancy rates and predictive of fertilizing ability. *Fertil Steril* 86:1408-1415.

Armstrong JS, Bivalacqua TJ, Chamulitrat W, Sikka S, Hellstrom WJG. 2002. A comparison of the NADPH oxidase in human sperm and white blood cells. *Int J Androl* 25:223-229.

Armstrong JS, Rajasekaran M, Chamulitrat W. 1999. Characterization of reactive oxygen species induced effects on human spermatozoa movement and energy metabolism. *Free Radic Biol Med* 26:869-880.

Athayde KS, Cocuzza M, Agarwal A, Krajcir N, Lucon AM, Srougi M, Hallak J. 2007. Development of normal reference values for seminal reactive oxygen species and their correlation with leukocytes and semen parameters in a fertile population. *J Androl* 28:613–620.

Auger J, Kunstmann JM, Czyglik F, Jouannet P. 1995. Decline in semen quality among fertile men in Paris during the past 20 years. *N Engl J Med* 332:281-285.

Aziz N, Saleh RA, Sharma RK, Lewis-Jones I, Esfandiari N, Thomas AJ Jr, Agarwal A. 2004. Novel association between sperm reactive oxygen species production, sperm morphological defects, and the sperm deformity index. *Fertil Steril* 81:349-354.

Baker HW, Brindle J, Irvine DS, Aitken RJ. 1996. Protective effects of antioxidants on the impairment of sperm motility by activated polymorphonuclear lymphocytes. *Fertil Steril* 65:411-419.

Baker HW. 1994. Clinical male infertility II. Critical evaluation of the prospects for therapy. *Reprod Fertil Dev* 6:9-12.

Baker SD, van Schaik RH, Rivory LP, Ten Tije AJ, Dinh K, Graveland WJ, Schenk PW, Charles KA, Clarke SJ, Carducci MA, McGuire WP, Dawkins F, Gelderblom H, Verweij J, Sparreboom A. 2004. Factors affecting cytochrome P-450 3A activity in cancer patients. *Clin Cancer Res* 10:8341-8350.

Balhorn R, Cosman M, Tanphaichitr N. 1988. Aberrant protamine 1/protamine 2 ratios in sperm of infertile human males. *Experientia* 44:52-55.

Banfi B, Molnar G, Maturana A, Steger K, Hegedus B, Demarex N, Krause KH. 2001. A Ca^{2+} -activated NADPH oxidase in testis, spleen and lymph nodes. *J Biol Chem* 276:37594-37601.

- Barratt CL, Robinson A, Spencer RC, Kinghorn GR, White A, Harrison PE, Kessopoulou E, Cooke ID. 1990. Seminal peroxidase positive cells are not an adequate indicator of asymptomatic urethral genital infection. *Int J Androl* 13:361-368.
- Barroso G, Morshedi M, Oehninger S. 2000. Analysis of DNA fragmentation, plasma membrane translocation of phosphatidylserine and oxidative stress in human spermatozoa. *Hum Reprod* 15:1338-1344.
- Barroso G, Taylor S, Morshedi M, Manzur F, Gavino F, Oehninger S. 2006. Mitochondrial membrane potential integrity and plasma membrane translocation of phosphatidylserine as early apoptotic markers: a comparison of two different sperm subpopulations. *Fertil Steril* 85:149-154.
- Berger RE, Karp LE, Williamson RA, Koehler J, Moore DE, Holmes KK. 1982. The relationship of pyospermia and seminal fluid bacteriology to sperm function as reflected in the sperm penetration assay. *Fertil Steril* 37:557-564.
- Bianchi P, Manicardi GC, Bizzaro D, Bianchi U, Sakkas D. 1993. Effect of DNA protamination on fluorochrome staining and in situ nick translation of murine and human mature spermatozoa. *Biol Reprod* 49:1038-1043.
- Biljan MM, Taylor CT, Manasse PR, Joughin EC, Kingsland CR, Lewis-Jones DI. 1994. Evaluation of different sperm function tests as screening methods for male fertilization potential: the value of the sperm migration test. *Fertil Steril* 62:591-598.
- Blackwell JM, Zaneveld LJ. 1992. Effect of abstinence on sperm acrosin, hypo-osmotic swelling, and other semen variables. *Fertil Steril* 58:798-802.
- Bland JM, Altman DG. 1986. Statistical methods of assessing agreement between two methods of clinical measurement. *Lancet* 1:307-310.
- Boekelheide K, Fleming SL, Johnson KJ, Patel SR, Schoenfeld HA. 2000. Role of Sertoli cells in injury-associated testicular germ cell apoptosis. *Proc Soc Exp Biol Med* 225:105-115.

Boivin J, Bunting L, Collins JA, Nygren KJ. 2007. International estimates of infertility prevalence and treatment-seeking: Potential need and demand for infertility medical care. *Hum Reprod* 22:1506-1512.

Boveris A, Chance B. 1973. The mitochondrial generation of hydrogen peroxide. General properties and effect of hyperbaric oxygen. *Biochem J* 134:707-716.

Brackett NL, Ibrahim E, Grotas JA, Aballa TC, Lynne CM. 2008. Higher sperm DNA damage in semen from men with spinal cord injuries compared to controls. *J Androl* 29:93-99.

Brill A, Torchinsky A, Carp H, Toder V. 1999. The role of apoptosis in normal and abnormal embryonic development. *J Assist Reprod Genet* 16:512-519.

Bruckert E. 1991. How frequent is unintentional childlessness in Germany? *Androl* 23:245-250.

Calvo L, Dennison-Lagos L, Banks SM, Dorfmann A, Thorsell LP, Bustillo M, Schulman JD, Sherins RJ. 1994. Andrology: Acrosome reaction inducibility predicts fertilization success at *in-vitro* fertilization. *Hum Reprod* 9:1880-1886.

Camejo MI, Segnini A, Proverbio F. 2001. Interleukin-6 (IL-6) in seminal plasma of infertile men, and lipid peroxidation of their sperm. *Arch Androl* 47:97-101.

Cande C, Cecconi F, Dessen P, Kroemer G. 2002. Apoptosis-inducing factor (AIF): key to the conserved caspase-independent pathways of cell death? *J Cell Sci* 115:4727-4734.

Carlsen E, Giwercman A, Keiding N, Skakkebaek NE. 1992. Evidence of decreasing quality of semen during the past 50 years. *Br Med J* 305:609-613.

Carrell DT, De Jonge C, Lamb DJ. 2006. The genetics of male infertility: a field of study whose time is now. *Arch Androl* 52:269-274.

Carrell DT, Liu L, Peterson CM, Jones KP, Hatasaka HH, Erickson L, Campbell B. Sperm DNA fragmentation is increased in couples with unexplained recurrent pregnancy loss. *Arch Androl*

- Carrell DT, Liu L. 2001. Altered protamine 2 expression is uncommon in donors of known fertility, but common among men with poor fertilizing capacity, and may reflect other abnormalities of spermiogenesis. *J Androl* 22:604-610.
- Castro A, Parodi D, Morales I, Madariaga M, Rios R, Smith R. 2004. Absence of Fas protein detection by flow cytometry in human spermatozoa. *Fertil Steril* 81:1019-1025.
- Chance B, Sies H, Boveris A. 1979. Hydroperoxide metabolism in mammalian organs. *Physiol Rev* 59:527-605.
- Chitra KC, Sujatha R, Latchoumycandane C, Mathur P. 2001. Effect of lindane on antioxidant enzymes in epididymis and epididymal sperm in adult rats. *Asian J Androl* 3:205-208.
- Cho C, Jung-Ha H, Willis WD, Goulding EH, Stein P, Xu H, Schultz RM, Hecht NB, Eddy EM. 2003. Protamine 2 deficiency leads to sperm DNA damage and embryo death in mice. *Biol Reprod* 69:211-217.
- Christiansen E, Tollefsrud A, Purvis K. 1991. Sperm quality in men with chronic abacterial prostatovesiculitis verified by rectal ultrasonography. *Urology* 38:545-549.
- Close CE, Roberts PL, Berger RE. 1990. Cigarettes, alcohol and marijuana are related to pyospermia in infertile men. *J Urol* 144:900-903.
- Comhaire FH, Mahmoud AMA, Depuydt CE, Zalata AA, Christophe AB. 1999. Mechanisms and effects of male genital tract infection on sperm quality and fertilizing potential: The andrologist's viewpoint. *Hum Reprod Update* 5:393-398.
- Cosci I, Moretti E, Collodel G. 2008. Lipid peroxidation in human spermatozoa from men with genitourinary infections. *Syst Biol Reprod Med* 54:75-83.
- Croteau DL, Stierum RH, Bohr VA. 1999. Mitochondrial DNA repair pathways. *Mutat Res* 434:137-148.
- Cunningham KA, Beagley KW. 2008. Male genital tract chlamydial infection: implications for pathology and infertility. *Biol Reprod* 79:180-189.

- D'Agostino RB, Pearson ES. 1973. Tests for departure from normality. Empirical results for the distributions of b_2 and $\sqrt{b_1}$. *Biometrika* 36:149-176.
- De Jonge C. 2002. The clinical value of sperm nuclear DNA assessment. *Hum Fertil* 5:51-53.
- de Kretser DM, Baker HW. 1999. Infertility in men: recent advances and continuing controversies. *J Clin Endocrinol Metab* 84:3443-3450.
- de Lamirande E, Gagnon C. 1992. Reactive oxygen species and human spermatozoa. II. Depletion of adenosine triphosphate plays an important role in the inhibition of sperm motility. *J Androl* 13:379-386.
- de Lamirande E, Gagnon C. 1993. Human sperm hyperactivation and capacitation as part of an oxidative process. *Free Radic Biol Med* 14:157-166.
- de Lamirande E, Gagnon C. 1995. Reactive oxygen species and sperm functions. *Medecine/Sciences* 11:564-569.
- de Lamirande E, Jiang H, Zini A, Kodama H, Gagnon C. 1997. Reactive oxygen species and sperm physiology. *Rev Reprod* 2:48-54.
- Depuydt C, Zalata A, Christophe A, Mahmoud A, Comhaire F. 1998. Mechanisms of sperm deficiency in male accessory gland infection. *Andrologia* 30:29-33.
- Depuydt CE, Bosmans E, Zalata A, Schoonjans F, Comhaire FH. 1996. The relation between reactive oxygen species and cytokines in andrological patients with or without male accessory gland infection. *J Androl* 17:699-707.
- Diemer T, Huwe P, Ludwig M, Hauck EW, Weidner W. 2003a. Urogenital infection and sperm motility. *Andrologia* 35:283-287.
- Diemer T, Huwe P, Ludwig M, Schroeder-Printzen I, Michelmann HW, Schiefer HG, Weidner W. 2003b. Influence of autogenous leucocytes and *Escherichia coli* on sperm motility parameters *in vitro*. *Andrologia* 35:100-105.
- Donnelly ET, McClure N, Lewis SEM. 2000. Glutathione and hypotaurine *in vitro*: effects on human sperm motility, DNA integrity and production of reactive oxygen species. *Mutagenesis* 15:61-68.

- Droge W. 2002. Free radicals in the physiological control of cell function. *Phys Rev* 82:47-95.
- Duran EH, Morshedi M, Taylor S, Oehninger S. 2002. Sperm DNA quality predicts intrauterine insemination outcome: A prospective cohort study. *Hum Reprod* 17:3122-3128.
- Earnshaw WC, Martins LM, Kaufmann SH. 1999. Mammalian caspases: structure, activation, substrates, and functions during apoptosis. *Annu Rev Biochem* 68:383-424.
- Ebisch IMW, Peters WHM, Thomas CMG, Wetzels AMM, Peer PGM, Steegers-Theunissen RPM. 2006. Homocysteine, glutathione and related thiols affect fertility parameters in the (sub)fertile couple. *Hum Reprod* 21:1725-1733.
- Eggert-Kruse W, Boit R, Rohr G, Aufenanger J, Hund M, Strowitzki T. 2001. Relationship of seminal plasma interleukin (IL)-8 and IL-6 with semen quality. *Hum Reprod* 16:517-528.
- Eggert-Kruse W, Gerhard I, Tilgen W, Runnebaum B. 1989. Clinical significance of crossed *in vitro* sperm-cervical mucus penetration test in infertility investigation. *Fertil Steril* 52:1032-1040.
- el-Demiry MI, Young H, Elton RA, Hargreave TB, James K, Chrisholm GD. 1986. Leucocytes in the ejaculate from fertile and infertile men. *Br J Urol* 158:715-720.
- Erenpreiss J, Hlevicka S, Zalkahis J, Erenpreissa J. 2002. Effect of leukocytospermia on sperm DNA integrity: a negative effect in abnormal semen samples. *J Androl* 23:717-723.
- Evenson DP, Jost LK, Marshall D, Zinaman MJ, Clegg E, Purvis K, de Angelis P, Claussen OP. 1999. Utility of the sperm chromatin structure assay as a diagnostic and prognostic tool in the human fertility clinic. *Hum Reprod* 14:1039-1049.
- Evers JL. 2002. Female subfertility. *Lancet* 360:151-159.
- Fisher HM, Aitken RJ. 1997. Comparative analysis of the ability of precursor germ cells and epididymal spermatozoa to generate reactive oxygen metabolites. *J Exp Zool* 277:390-400.

Følgero T, Bertheussen K, Lindal S, Torbergsen T, Oian P. 1993. Mitochondrial disease and reduced sperm motility. *Hum Reprod* 8:1863-1868.

Foresta C, Flohe L, Garolla A, Roveri A, Ursini F, Maiorino M. 2002. Male fertility is linked to the selenoprotein phospholipid hydroperoxide glutathione peroxidase. *Biol Reprod* 67:967-971.

Fraczek M, Kurpisz M. 2007. Inflammatory mediators exert toxic effects of oxidative stress on human spermatozoa. *J Androl* 28:325-333.

Fraczek M, Szumala-Kakol A, Jedrzejczak P, Kamieniczna M, Kurpisz M. 2007. Bacteria trigger oxygen radical release and sperm lipid peroxidation in *in vitro* model of semen inflammation. *Fertil Steril* 88:1076-1085.

Fraga CG, Motchnik PA, Shigenaga MK, Helbock HJ, Jacob RA, Ames BN. 1991. Ascorbic acid protects against endogenous oxidative DNA damage in human sperm. *Proc Natl Acad Sci USA* 88:11003-11006.

Fraga CG, Motchnik PA, Wyrobek AJ, Rempel DM, Ames BN. 1996. Smoking and low antioxidant levels increase oxidative damage in sperm DNA. *Mutat Res* 351:199-203.

Friedlander RM. 2003. Apoptosis and caspases in neurodegenerative diseases. *N Engl J Med* 348:1365-1375.

Fuchs J, Thiele J, Ochsendorf FR. 1997. Oxidants, antioxidants and oxidative injury. In: Ochsendorf FR and Fuchs J, (eds). *Oxidative stress in male infertility*. St Augustin: Gardez. p 21-39

Gandini L, Lombardo F, Paoli D, Caruso F, Eleuteri P, Leter G, Ciriminna R, Culasso F, Dondero F, Lenzi A, Spano M. 2004. Full-term pregnancies achieved with ICSI despite high levels of sperm chromatin damage. *Hum Reprod* 19:1409-1417.

Garrido N, Meseguer M, Alvarez J, Simón C, Pellicer A, Remohí J. 2004. Relationship among standard semen parameters, glutathione peroxidase/glutathione reductase activity, and mRNA expression and reduced glutathione content in ejaculated spermatozoa from fertile and infertile men. *Fertil Steril* 82:1059-1066.

Giampietri C, Petrunaro S, Coluccia P, D'Alessio A, Starace D, Riccioli A, Padula F, Palombi F, Ziparo E, Filippini A, De Cesaris P. 2005. Germ cell apoptosis control during spermatogenesis. *Contraception* 72:298-302.

Giannattasio A, De Rosa M, Smeraglia R, Zarrilli S, Cimmino A, Di Rosario B, Ruggiero R, Colao A, Lombardi G. 2002. Glutathione peroxidase (GPX) activity in seminal plasma of healthy and infertile males. *J Endocrinol Invest* 25:983-986.

Gil-Guzman E, Ollero M, Lopez MC, Sharma RK, Alvarez JG, Thomas Jr. AJ, Agarwal A. 2001. Differential production of reactive oxygen species by subsets of human spermatozoa at different stages of maturation. *Hum Reprod* 16:1922-1930.

Giulivi C, Boveris A, Cadenas E. 1995. Hydroxyl radical generation during mitochondrial electron transfer and the formation of 8-hydroxydeoxyguanosine in mitochondrial DNA. *Arch Biochem Biophys* 316:909-916.

Gogvadze V, Orrenius S. 2006. Mitochondrial regulation of apoptotic cell death. *Chem Biol Interact* 163:4-14.

Gomez E, Buckingham DW, Brindle J, Lanzafame F, Irvine DS, Aitken RJ. 1996. Development of an image analysis system to monitor the retention of residual cytoplasm by human spermatozoa: Correlation with biochemical markers of the cytoplasmic space, oxidative stress, and sperm function. *J Androl* 17:276-287.

Gonzales GF, Muñoz G, Sánchez R, Henkel R, Gallegos-Avila G, Diaz-Gutierrez O, Vigil P, Vazquez F, Kortebani G, Mazzolli A, Bustos-Obregon E. 2004. Update on the impact of chlamydia trachomatis infection on male fertility. *Andrologia* 36:1-23.

Gorczyca W, Traganos F, Jesionowska H, Daryznkiewicz Z. 1993. Presence of strand breaks and increased sensitivity of DNA *in situ* to denaturation in abnormal human sperm cells: analogy to apoptosis in somatic cells. *Exp Cell Res* 207:202-205.

Green DR, Reed JC. 1998. Mitochondria and apoptosis. *Science* 281:1309-1312.

Green DR. 2003. Overview: apoptotic signaling pathways in the immune system. *Immunol Rev* 193:5-9.

Grunewald S, Paasch U, Said TM, Sharma RK, Glander HJ, Agarwal A. 2005. Caspase activation in human spermatozoa in response to physiological and pathological stimuli. *Fertil Steril* 83:1106-1112.

Halliwell B, Gutteridge JMC. 1989. *Free radicals in biology and medicine*. Oxford: Clarendon Press.

Henkel R, Hajimohammad M, Stalf T, Hoogendijk C, Mehnert C, Menkveld R, Gips H, Schill W, Kruger TF. 2004. Influence of deoxyribonucleic acid damage on fertilization and pregnancy. *Fertil Steril* 81:965-972.

Henkel R, Kierspel E, Hajimohammad M, Stalf T, Hoogendijk C, Mehnert C, Menkveld R, Schill W, Kruger TF. 2003b. DNA fragmentation of spermatozoa and assisted reproduction technology. *Reprod Biomed Online* 7:477-484.

Henkel R, Kierspel E, Stalf T, Mehnert C, Menkveld R, Tinneberg H, Schill WB, Kruger TF. 2005. Effect of reactive oxygen species produced by spermatozoa and leukocytes on sperm functions in non-leukocytospermic patients. *Fertil Steril* 83:635-642.

Henkel R, Ludwig M, Schuppe HC, Diemer T, Schill WB, Weidner W. 2006. Chronic pelvic pain syndrome/chronic prostatitis affect the acrosome reaction in human spermatozoa. *World J Urol* 24:39-44.

Henkel R, Maaß G, Hajimohammad M, Menkveld R, Stalf T, Villegas J, Sánchez R, Kruger TF, Schill W. 2003a. Urogenital inflammation: Changes of leucocytes and ROS. *Andrologia* 35:309-313.

Henkel R, Maaß G, Jung A, Haidl G, Schill WB, Schuppe HC. 2007. Age-related changes in seminal polymorphonuclear elastase in men with asymptomatic inflammation of the genital tract. *Asian J Androl* 9:299-304.

Henkel R, Schill WB. 1998. Sperm separation in patients with urogenital infections. *Andrologia* 30:91-97.

Henkel R. 2008. Urogenital infections and STDs: ROS and DNA integrity – implications of male genital gland infections. In: *Clinical Andrology*. Giwercman A, Weidner W, Tournaye H, Bjorndahl L. (eds.) London, UK: Informal Health Care.

Host E, Lindenberg S, Smidt-Jensen S. 2000. The role of DNA strand breaks in human spermatozoa used for IVF and ICSI. *Acta Obstet Gynecol Scand* 79:559-563.

Hotchkiss RS, Brunner EK, Grenley P. 1938. Semen analyses of two hundred fertile men. *Am J Med Sci* 196:362-384.

Hsieh Y, Sun Y, Chang C, Lee Y, Tsai H, Lin C. 2002. Superoxide dismutase activities of spermatozoa and seminal plasma are not correlated with male infertility. *J Clin Lab Anal* 16:127-131.

Huang C, Lin D, Tsao H, Cheng T, Liu C, Lee M. 2005. Sperm DNA fragmentation negatively correlates with velocity and fertilization rates but might not affect pregnancy rates. *Fertil Steril* 84:130-140.

Hughes CM, Lewis SE, McKelvey-Martin VJ, Thompson E. 1996. A comparison of baseline and induced DNA damage in human spermatozoa from fertile and infertile men, using a modified comet assay. *Mol Hum Reprod* 2:613-619.

Hull MG, Glazener CM, Kelly NJ, Conway DI, Foster PA, Coulson C, Lambert PA, Watt EM, Desai KM. 1985. Population study of causes, treatment and outcome of fertility. *Br Med J* 291:1693-1697.

Irvine DS, Twigg JP, Gordon EL, Fulton N, Milne PA, Aitken RJ. 2000. DNA integrity in human spermatozoa: Relationships with semen quality. *J Androl* 21:33-44.

Iwasaki A, Gagnon C. 1992. Formation of reactive oxygen species in spermatozoa of infertile patients. *Fertil Steril* 57:409-416.

Jones R, Mann T, Sherins RJ. 1979. Peroxidative breakdown of phospholipids in human spermatozoa: Spermicidal effects of fatty acid peroxides and protective action seminal plasma. *Fertil Steril* 31:531-537.

Juul S, Karmaus W, Olsen J. 1999. Regional differences in waiting time to pregnancy: Pregnancy-based surveys from Denmark, France, Germany, Italy and Sweden. *Hum Reprod* 14:1250-1254.

Kao SH, Chao HT, Chen HW, Hwang TI, Liao TL, Wei YH. 2008. Increase of oxidative stress in human sperm with lower motility. *Fertil Steril* 89:1183-1190.

Keck C, Gerber-Schafer C, Clad A, Wilhelm C, Breckwoldt M. 1998. Seminal tract infections: Impact on male fertility and treatment options. *Hum Reprod Update* 4:891-903.

Kerr JF, Wyllie AH, Currie AR. 1972. Apoptosis: A basic biological phenomenon with wide-ranging implications in tissue kinetics. *Br J Cancer* 26:239-257.

Klebanoff SJ, Clark RA. 1978. The neutrophil: Function and clinical disorders. In: Anonymous Amsterdam, North Holland Publishing Co. p 409-488

Kobayashi T, Miyazaki T, Natori M, Nozawa S. 1991. Protective role of superoxide dismutase in human sperm motility: Superoxide dismutase activity and lipid peroxide in human seminal plasma and spermatozoa. *Hum Reprod* 6:987-991.

Kodama H, Yamaguchi R, Fukuda J, Kasai H, Tanaka T. 1997. Increased oxidative deoxyribonucleic acid damage in the spermatozoa of infertile male patients. *Fertil Steril* 68:519-524.

Koppers AJ, De Iuliis GN, Finnie JM, McLaughlin EA, Aitken RJ. 2008. Significance of mitochondrial reactive oxygen species in the generation of oxidative stress in spermatozoa. *J Clin Endocrinol Metab* 93:3199-3207.

Kotwicka M, Filipiak K, Jedrzejczak P, Warchol JB. 2008. Caspase-3 activation and phosphatidylserine membrane translocation in human spermatozoa: is there a relationship? *Reprod Biomed Online* 16:657-663.

Koumantakis E, Matalliotakis I, Kyriakou D, Fragouli Y, Relakis K. 1998. Increased levels of interleukin-8 in human seminal plasma. *Andrologia* 30:339-343.

Kovalski N, de Lamirande E, Gagnon C. 1992. Reactive oxygen species generated by human neutrophils inhibit sperm motility: protective effect of seminal plasma and scavengers. *Fertil Steril* 58:809-816.

Krausz C, Mills C, Rogers S, Tan SL, Aitken RJ. 1994. Stimulation of oxidant generation by human sperm suspensions using phorbol esters and formyl peptides: relationships with motility and fertility *in vitro*. *Fertil Steril* 62:599-605.

Kroemer G, Zamzami N, Susin SA. 1997. Mitochondrial control of apoptosis. *Immunol Today* 18:44-51.

Krouwer JS, Monti KL. 1995. A simple, graphical method to evaluate laboratory assays. *Eur J Clin Chem Clin Biochem* 33:525-527.

Kruger TF, Acosta AA, Simmons KF, Swanson RJ, Matta JF, Veeck LL, Morshedi M, Brugo S. 1987. New method of evaluating sperm morphology with predictive value for human *in vitro* fertilization. *Urology* 30:248-251.

Kruger TF, Menkveld R, Stander FS, Lombard CJ, van der Merwe JP, van Zyl JA, Smith K. 1986. Sperm morphologic features as a prognostic factor in *in vitro* fertilization. *Fertil Steril* 46:1118-1123.

Lachaud C, Tesarik J, Canadas ML, Mendoza C. 2004. Apoptosis and necrosis in human ejaculated spermatozoa. *Hum Reprod* 19:607-610.

Lenzi A, Lombardo F, Gandini L, Culasso F, Dondero F. 1992. Glutathione therapy for male infertility. *Sys Biol Reprod Med* 29:65-68.

Lewis SE, Sterling ES, Young IS, Thompson W. 1997. Comparison of individual antioxidants in sperm and seminal plasma in fertile and infertile men. *Fertil Steril* 67:142-147.

Liang R, Senturker S, Shi X, Bal W, Dizdaroglu M, Kasprzak KS. 1999. Effects of Ni(II) and Cu(II) on DNA interaction with the N-terminal sequence of human protamine P2: enhancement of binding and mediation of oxidative DNA strand scission and base damage. *Carcinogenesis* 20:893-898.

Lin LI. 1989. A concordance correlation coefficient to evaluate reproducibility. *Biometrics* 45:255-268.

Liu DY, Baker HW. 2000. Defective sperm-zona pellucida interaction: A major cause of failure of fertilization in clinical *in vitro* fertilization. *Hum Reprod* 15:702-708.

Liu DY, Baker HW. 2003. Disordered zona pellucida-induced acrosome reaction and failure of *in vitro* fertilization in patients with unexplained infertility. *Fertil Steril* 79:74-80.

Liu X, Kim CN, Jemmerson R, Wang X. 1996. Induction of apoptotic program in cell-free extracts: Requirement for dATP and cytochrome *c*. *Cell* 86:147-157.

Loft S, Kold-Jensen T, Hjollund NH, Giwercman A, Gylleborg J, Ernst E, Olsen J, Scheike T, Poulsen HE, Bonde JP. 2003. Oxidative DNA damage in human sperm influences time to pregnancy. *Hum Reprod* 18:1265-1272.

Lopes S, Jurisicova A, Sun J-, Casper RF. 1998. Reactive oxygen species: Potential cause for DNA fragmentation in human spermatozoa. *Hum Reprod* 13:896-900.

Maneesh M, Dutta S, Chakrabarti A, Vasudevan DM. 2006. Alcohol abuse-duration dependent decrease in plasma testosterone and antioxidants in males. *Indian J Physiol Pharmacol* 50:291-296.

Marchesi DE, Feng HL. 2007. Sperm DNA integrity from sperm to egg. *J Androl* 28:481-489.

Marchetti C, Jouy N, Leroy-Martin B, Defossez A, Formstecher P, Marchetti P. 2004. Comparison of four fluorochromes for the detection of inner mitochondrial membrane potential in human spermatozoa and their correlation with sperm motility. *Hum Reprod* 19:2267-2276.

Marchetti C, Obert G, Deffosez A, Formstecher P, Marchetti P. 2002. Study of mitochondrial membrane potential, reactive oxygen species, DNA fragmentation and cell viability by flow cytometry in human sperm. *Hum Reprod* 17:1257-1265.

Marchetti P, Marchetti C. 2007. Impact and significance of apoptosis in human ejaculated spermatozoa. In: Kettleworth CR (ed); *Cell Apoptosis Research Advances*. Nova Science Publishers. New York. pp 321-335.

Martinez P, Proverbio F, Camejo MI. 2007. Sperm lipid peroxidation and pro-inflammatory cytokines. *Asian J Androl* 9:102-107.

Maruyama DK Jr, Hale RW, Rogers BJ. 1985. Effects of white blood cells on the in vitro penetration of zona-free hamster eggs by human spermatozoa. *J Androl* 6:127-135.

Mazzilli F, Rossi T, Marchesini M, Ronconi C, Dondero F. 1994. Superoxide anion in human semen related to seminal parameters and clinical aspects. *Fertil Steril* 62:862-868.

McLachlan R, de Kretser DM. 2001. Male infertility: The cause for continued research. *MJA* 174:116-117.

McVicar CM, McClure N, Williamson K, Dalzell LH, Lewis SE. 2004. Incidence of Fas positivity and deoxyribonucleic acid double-stranded breaks in human ejaculated sperm. *Fertil Steril* 81:767-774.

Menkveld R, Huwe P, Ludwig M, Weidner W. 2003. Morphological sperm alternations in different types of prostatitis. *Andrologia* 35:288-293.

Menkveld R, Kruger TF. 1998. Sperm morphology and male urogenital infections. *Andrologia* 30:49-53.

Menkveld R, Rhemrev JP, Franken DR, Vermeiden JP, Kruger TF. 1996. Acrosomal morphology as a novel criterion for male fertility diagnosis: Relation with acrosin activity, morphology (strict criteria), and fertilization *in vitro*. *Fertil Steril* 65:637-644.

Meseguer M, Martínez-Conejero JA, O'Connor JE, Pellicer A, Remohí J, Garrido N. 2008. The significance of sperm DNA oxidation in embryo development and reproductive outcome in an oocyte donation program: A new model to study a male infertility prognostic factor. *Fertil Steril* 89:1191-1199.

Miesel R, Jdrzejczak P, Sanocka D, Kurpisz M. 1997. Severe antioxidant deficiency in human semen samples with pathological spermogram parameters. *Andrologia* 29:77-83.

Mostafa T, Tawadrous G, Roaia MMF, Amer MK, Kader RA, Aziz A. 2006. Effect of smoking on seminal plasma ascorbic acid in infertile and fertile males. *Andrologia* 38:221-224.

Moustafa M, Sharma RK, Thornton J, Mascha E, Abdel-Hafez MA, Thomas AJ Jr, Agarwal A. 2004. Relationship between ROS production, apoptosis and DNA denaturation in spermatozoa from patients examined for infertility. *Hum Reprod* 19:129-138.

Nagata S. 2000. Apoptotic DNA fragmentation. *Exp Cell Res* 256:12-18.

- Nallella KP, Sharma RK, Allamaneni SS, Agarwal A. 2005. Identification of male factor infertility using a novel semen quality score and reactive oxygen species levels. *Clinics* 60:317-324.
- Nandipati KC, Pasqualotto FF, Thomas AJ, Agarwal A. 2005. Relationship of interleukin-6 with semen characteristics and oxidative stress in vasectomy reversal patients. *Andrologia* 37:131-134.
- Nasr-Esfahani MH, Salehi M, Razavi S, Anjomshoa M, Rozbahani S, Moulavi F, Mardani M. 2005. Effect of sperm DNA damage and sperm CMA3 staining on fertilization and embryo development post-ICSI. *Reprod Biomed Online* 11:198-205.
- Nicholson DW. 1999. Caspase structure, proteolytic substrates, and function during apoptotic cell death. *Cell Death Differ* 6:1028-1042.
- Nieschlag E, Behre HM, van Ahlen H, (eds). 2000. *Andrology: Male reproductive health and dysfunction*. Heidelberg Berlin New York: Springer.
- O'Brien J, Zini A. 2005. Sperm DNA integrity and male infertility. *Urology* 65:16-22.
- Oberg BP, McMenamin E, Lucas FL, McMonagle E, Morrow J, Ikizler TA, Himmelfarb J. 2004. Increased prevalence of oxidant stress and inflammation in patients with moderate to severe chronic kidney disease. *Kidney Int* 65:1009-1016.
- Ochsendorf FR, Buhl R, Bästlein A, Beschmann H. 1998. Glutathione in spermatozoa and seminal plasma of infertile men. *Hum Reprod* 13:353-359.
- Ochsendorf FR, Thiele J, Fuchs J, Schuttau H, Freisleben HJ, Buslau M, Mibradt R. 1994. Chemiluminescence in semen of infertile men. *Andrologia* 26:289-293.
- Ochsendorf FR. 1999. Infections in the male genital tract and reactive oxygen species. *Hum Reprod Update* 5:399-420.
- O'Connell M, McClure N, Lewis SE. 2002. Mitochondrial DNA deletions and nuclear DNA fragmentation in testicular and epididymal human sperm. *Hum Reprod* 17:1565-1570.

Oehninger S, Morshedi M, Weng SL, Taylor S, Duran H, Beebe S. 2003. Presence and significance of somatic cell apoptosis markers in human ejaculated spermatozoa. *Reprod Biomed Online* 7:469-476.

Oliva R. 2006. Protamines and male infertility. *Hum Reprod Update* 12:417-435.

Oliw EH, Sprecher H. 1989. Metabolism of polyunsaturated fatty acids by an (n-6)-lipoxygenase associated with human ejaculates. *Biochem Biophys Acta* 1002:283-291.

Ollero M, Gil-Guzman E, Lopez MC, Sharma RK, Agarwal A, Larson K, Evenson D, Thomas Jr AJ, Alvarez JG. 2001. Characterization of subsets of human spermatozoa at different stages of maturation: Implications in the diagnosis and treatment of male infertility. *Hum Reprod* 16:1912-1921.

Oosterhuis GJ, Mulder AB, Kalsbeek-Batenburg E, Lambalk CB, Schoemaker J, Vermes I. 2000. Measuring apoptosis in human spermatozoa: a biological assay for semen quality? *Fertil Steril* 74:245-250.

Ozmen B, Koutlaki N, Youssry M, Diedrich K, Al-Hasani S. 2007. DNA damage of human spermatozoa in assisted reproduction: origins, diagnosis, impacts and safety. *Reprod Biomed Online* 14:384-395.

Paasch U, Grunewald S, Dathe S, Glander HJ. 2004. Mitochondria of human spermatozoa are potentially susceptible to apoptosis. *Ann N Y Acad Sci* 1030:403-9.

Pasqualotto FF, Sharma RK, Potts JM, Nelson DR, Thomas AJ, Agarwal A. 2000. Seminal oxidative stress in patients with chronic prostatitis. *Urology* 55:881-885.

Pellati D, Mylonakis I, Bertoloni G, Fiore C, Andrisani A, Ambrosini G, Armanini D. 2008. Genital tract infections and infertility. *Eur J Obstet Gynecol Reprod Biol* 140:3-11.

Perreault SD, Aitken RJ, Baker HW, Evenson DP, Huszar G, Irvine DS, Morris ID, Morris RA, Robbins WA, Sakkas D, Spano M, Wyrobek AJ. 2003. Integrating new tests of sperm genetic integrity into semen analysis: breakout group discussion. *Adv Exp Med Biol* 518:253-268.

- Plante M, De Lamirande E, Gagnon C. 1994. Reactive oxygen species released by activated neutrophils, but not by deficient spermatozoa, are sufficient to affect normal sperm motility. *Fertil Steril* 62:387-393.
- Potts RJ, Notarianni LJ, Jefferies TM. 2000. Seminal plasma reduces exogenous oxidative damage to human sperm, determined by the measurement of DNA strand breaks and lipid peroxidation. *Mutat Res* 447:249-256.
- Punab M, Loivukene K, Kermes K, Mandar R. 2003. The limit of leukocytospermia from a microbiological viewpoint. *Andrologia* 35:271-278.
- Purvis K, Christiansen E. 1992. Male infertility: Current concepts. *Ann Med* 24:259-272.
- Quinn P, Kerin JF, Warnes GM. 1985. Improved pregnancy rate in human *in vitro* fertilization with the use of a medium based on the composition of human tubal fluid. *Fertil Steril* 44:493-498.
- Rajasekaran M, Hellstrom WJ, Naz RK, Sikka SC. 1995. Oxidative stress and interleukins in seminal plasma during leukocytospermia. *Fertil Steril* 64:166-171.
- Ramos L, Wetzels AMM. 2001. Low rates of DNA fragmentation in selected motile human spermatozoa assessed by the TUNEL assay. *Hum Reprod* 16:1703-1707
- Reed JC. 2000. Mechanisms of apoptosis. *Am J Pathol* 157:1415-1430.
- Ricci G, Perticarari S, Fragonas E, Giolo E, Canova S, Pozzobon C, Guaschino S, Presani G. 2002. Apoptosis in human sperm: its correlation with semen quality and the presence of leukocytes. *Hum Reprod* 17:2665-2672.
- Robinson JN, Lockwood GM, Dokras A, Egan DM, Nicholson SC, Ross C, Barlow DH. 1994. Does isolated teratozoospermia affect performance in *in vitro* fertilization and embryo transfer? *Hum Reprod* 9:870-874.
- Rodin DM, Larone D, Goldstein M. 2003. Relationship between semen cultures, leukocytospermia and semen analysis in men undergoing fertility evaluation. *Fertil Steril* 79:1555-1558.

Ron-el R, Nachum H, Herman A, Golan A, Caspi E, Soffer Y. 1991. Delayed fertilization and poor embryonic development associated with impaired semen quality. *Fertil Steril* 55:338-344.

Ruiz-Pesini E, Lapena AC, Diez C, Alvarez E, Enriquez JA, Lopez-Perez MJ. 2000. Seminal quality correlates with mitochondrial functionality. *Clin Chim Acta* 300:97-105.

Said TM, Paasch U, Glander HJ, Agarwal A. 2004. Role of caspases in male infertility. *Hum Reprod Update* 10:39-51.

Sakkas D, Mariethoz E, St John JC. 1999. Abnormal sperm parameters in humans are indicative of an abortive apoptotic mechanism linked to the Fas-mediated pathway. *Exp Cell Res* 251:350-355.

Sakkas D, Moffatt O, Manicardi GC, Mariethoz E, Tarozzi N, Bizzaro D. 2002. Nature of DNA damage in ejaculated human spermatozoa and the possible involvement of apoptosis. *Biol Reprod* 66:1061-1067.

Sakkas D, Seli E, Bizzaro D, Tarozzi N, Manicardi GC. 2003. Abnormal spermatozoa in the ejaculate: abortive apoptosis and faulty nuclear remodelling during spermatogenesis. *Reprod Biomed Online* 7:248-432.

Saleh RA, Agarwal A, Kandirali E, Sharma RK, Thomas AJ Jr, Nada EA, Evenson DP, Alvarez JG. 2002b. Leukocytospermia is associated with increased reactive oxygen species production in human sperm. *Fertil Steril* 78:1215-1224.

Saleh RA, Agarwal A, Sharma RK, Nelson DR, Thomas AJ. 2002a. Effect of cigarette smoking on levels of seminal oxidative stress in infertile men: A prospective study. *Fertil Steril* 78:491-499.

Sanocka D, Jedrzejczak P, Szumala-Kakol A, Fraczek M, Kurpisz M. 2003. Male genital tract inflammation: The role of selected interleukins in regulation of pro-oxidant and antioxidant enzymatic substances in seminal plasma. *J Androl* 24:448-455.

- Sanocka D, Miesel R, Jedrzejczak P, Chelmonskasoyta A, Kurpisz M. 1997. Effect of reactive oxygen species and the activity of antioxidant systems on human semen; association with male infertility. *Int J Androl* 20:255-264.
- Schaeffer AJ. 2003. Epidemiology and demographics of prostatitis. *Andrologia* 35:252-257.
- Schulz M, Sanchez R, Soto L, Risopatron J, Villegas J. 2009. Effect of *Escherichia coli* and its soluble factors on mitochondrial membrane potential, phosphatidylserine translocation, viability, and motility of human spermatozoa. *Fertil Steril* (Article in press).
- Schuppe HC, Meinhardt A, Allam JP, Bergmann M, Weidner W, Haidl G. 2008. Chronic orchitis: a neglected cause of male infertility. *Andrologia* 40:84-91.
- Seli E, Gardner D, Schoolcraft WB, Moffatt O, Sakkas D. 2004. Extent of nuclear DNA damage in ejaculated spermatozoa impacts on blastocyst development after *in vitro* fertilization. *Fertil Steril* 82:378-383.
- Sergerie M, Laforest G, Bujan L, Bissonnette F, Bleau G. 2005. Sperm DNA fragmentation: threshold value in male infertility. *Hum Reprod* 20:3446-3551.
- Sharara FI, Illions EH, Coddington CC, Scott RT Jr. 1995. Evaluation of the tru-trax cervical mucus penetration test in predicting fertilization and pregnancy rates in *in vitro* fertilization. *Hum Reprod* 10:1481-1485.
- Sharma RK, Pasqualotto FF, Nelson DR, Thomas AJ Jr, Agarwal A. 2001. Relationship between seminal white blood cell counts and oxidative stress in men treated at an infertility clinic. *J Androl* 22:575-583.
- Sharma RK, Said T, Agarwal A. 2004. Sperm DNA damage and its clinical relevance in assessing reproductive outcome. *Asian J Androl* 6:139-148.
- Shekarriz M, Thomas AJ Jr, Agarwal A. 1995. Incidence and level of seminal reactive oxygen species in normal men. *Urology* 45:103-107.
- Sherins RJ. 1995. How is male infertility defined? In Robaire B, Pryor JL, Trailer JM (eds). *Handbook of Andrology*. American Society of Andrology, Allen Press pp 48-51.

- Sies H. 1991. Oxidative stress: Oxidants and antioxidants. London: Academic Press.
- Sikka SC, Rajasekaran M, Hellstrom WJ. 1995. Role of oxidative stress and antioxidants in male infertility. *J Androl* 16:464-468.
- Silber SJ, Repping S. 2002. Transmissions of male infertility to future generations: lessons from the Y chromosome. *Hum Reprod Update* 8:217-229.
- Skakkebaek NE, Jørgensen N, Main K, Rajpert-De Meyts E, Leffers H, Andersson AM, Juul A, Carlsen E, Mortensen GK, Jensen TK, Toppari J. 2006. Is human fecundity declining? *Int J Androl* 29:2-12.
- Smith R, Vantman D, Ponce J, Escobar J, Lissi E. 1996. Total antioxidant capacity of human seminal plasma. *Hum Reprod* 11:1655-1660.
- Song GJ, Norkus EP, Lewis V. 2006. Relationship between seminal ascorbic acid and sperm DNA integrity in infertile men. *Int J Androl* 29:569-575.
- Spanò M, Bonde JP, Hjøllund HI, Kolstad HA, Cordelli E, Leter G. 2000. Sperm chromatin damage impairs human fertility. The Danish First Pregnancy Planner Study Team. *Fertil Steril* 73:43-50.
- Sukcharoen N, Keith J, Irvine DS, Aitken RJ. 1995. Predicting the fertilizing potential of human sperm suspensions *in vitro*: Importance of sperm morphology and leukocyte contamination. *Fertil Steril* 63:1293-1300.
- Sun JG, Jurisicova A, Casper RF. 1997. Detection of deoxyribonucleic acid fragmentation in human sperm: Correlation with fertilization *in vitro*. *Biol Reprod* 56:602-607.
- Taylor SL, Weng SL, Fox P, Duran EH, Morshedi MS, Oehninger S, Beebe SJ. 2004. Somatic cell apoptosis markers and pathways in human ejaculated sperm: potential utility as indicators of sperm quality. *Mol Hum Reprod* 10:825-834.
- Tesarik J, Greco E, Mendoza C. 2004. Late, but not early, paternal effect on human embryo development is related to sperm DNA fragmentation. *Hum Reprod* 19:611-615.

- Tesarik J, Mendoza-Tesarik R, Mendoza C. 2006. Sperm nuclear DNA damage: update on the mechanism, diagnosis and treatment. *Reprod Biomed Online* 12:715-721.
- Therond P, Auger J, Legrand A, Jouannet P. 1996. Alpha-tocopherol in human spermatozoa and seminal plasma: Relationships with motility, antioxidant enzymes and leukocytes. *Mol Hum Reprod* 2:739-744.
- Thomas J, Fishel SB, Hall JA, Green S, Newton TA, Thornton SJ. 1997. Increased polymorphonuclear granulocytes in seminal plasma in relation to sperm morphology. *Hum Reprod* 12:2418-21.
- Thornberry NA, Lazebnik Y. 1998. Caspase: enemies within. *Science* 281:1312-1316.
- Tomlinson MJ, Barratt CL, Bolton AE, Lenton EA, Roberts HB, Cooke ID. 1992. Round cells and sperm fertilizing capacity: the presence of immature germ cells but not seminal leukocytes is associated with reduced success of *in vitro* fertilization. *Fertil Steril* 58:1257-59.
- Tomlinson MJ, Barratt CLR, Cooke ID. 1993. Prospective study of leukocytes and leukocyte subpopulations in semen suggests they are not a cause of male infertility. *Fertil Steril* 60:1069-1075.
- Tomsu M, Sharma V, Miller D. 2002. Embryo quality and IVF treatment outcomes may correlate with different sperm comet assay parameters. *Hum Reprod* 17:1856-1862.
- Tremellen K. 2008. Oxidative stress and male infertility - A clinical perspective. *Hum Reprod Update* 14:243-258.
- Twigg JP, Irvine DS, Aitken RJ. 1998. Oxidative damage to DNA in human spermatozoa does not preclude pronucleus formation at intracytoplasmic sperm injection. *Hum Reprod* 13:1864-1871.
- Valko M, Leibfritz D, Moncol J, Cronin MT, Mazur M, Telser J. 2007. Free radicals and antioxidants in normal physiological functions and human disease. *Int J Biochem Cell Biol* 44:84.

van Waelegheem K, De Clercq N, Vermeulen L, Schoojans F, Comhaire F. 1996. Deterioration of sperm quality in young Belgian men during recent decades. *Hum Reprod* 11:325-329.

Vernet P, Aitken RJ, Drevet JR. 2004. Antioxidant strategies in the epididymis. *Mol Cell Endocrinol* 216:31-39.

Vicari E. 1999. Seminal leukocyte concentration and related specific reactive oxygen species production in patients with male accessory gland infections. *Hum Reprod* 14:2025-2030.

Villegas J, Schulz M, Soto L, Sanchez R. 2005. Bacteria induce expression of apoptosis in human spermatozoa. *Apoptosis* 10:105-110.

Vogelpeel FR, van Kooij RJ, de Velde ER, Verhoef J. 1991. Influence of polymorphonuclear granulocytes on the zona-free hamster oocyte assay. *Hum Reprod* 6:1104-1107.

Wang X, Sharma RK, Sikka SC, Thomas AJ, Falcone T, Agarwal A. 2003. Oxidative stress is associated with increased apoptosis leading to spermatozoa DNA damage in patients with male factor infertility. *Fertil Steril* 80:531-535.

Ward WS, Coffey DS. 1991. DNA packaging and organization in mammalian spermatozoa: a comparison with somatic cells. *Biol Reprod* 44:569-574.

Weidner W, Krause W, Ludwig M. 1999. Relevance of male accessory gland infection for subsequent fertility with special focus on prostatitis. *Hum Reprod Update* 5:421-432.

Weng SL, Taylor SL, Morshedi M, Schuffner A, Duran EH, Beebe S, Oehninger S. 2002. Caspase activity and apoptotic markers in ejaculated human sperm. *Mol Hum Reprod* 8:984-991.

Whittington K, Harrison SC, Williams KM, Day JL, McLaughlin EA, Hull MGR, Ford WCL. 1999. Reactive oxygen species (ROS) production and the outcome of diagnostic tests of sperm function. *Int J Androl* 22:236-242.

Wild S, Roglic G, Green A, Sicree R, King H. 2004. Global prevalence of diabetes: Estimates for the year 2000 and projections for 2030. *Diabetes Care* 27:1047-1053.

Wolff H, Anderson DJ. 1988. Immunohistologic characterization and quantitation of leukocyte subpopulations in human semen. *Fertil Steril* 49:497-504.

Wolff H, Politch JA, Martinez A, Haimovici F, Hill JA, Anderson DJ. 1990. Leukocytospermia is associated with poor semen quality. *Fertil Steril* 53:528-536.

Wolff H. 1995. The biologic significance of white blood cells in semen. *Fertil Steril* 63:1143-1157.

Wolff H. 1998. Methods for the detection of male genital tract inflammation. *Andrologia* 30:35-39.

World Health Organization. 1992. WHO laboratory manual for the examination of human semen and semen-cervical mucus interaction. Cambridge, UK: Cambridge University Press.

World Health Organization. 1999. WHO laboratory manual for the examination of human semen and sperm-cervical mucus interaction. Cambridge, UK: Cambridge University Press.

Yanushpolsky EH, Politch JA, Hill JA, Anderson DJ. 1996. Is leukocytospermia clinically relevant? *Fertil Steril* 66:822-825.

Zalata AA, Christophe AB, Depuydt CE, Schoonjans F, Comhaire FH. 1998. White blood cells cause oxidative damage to the fatty acid composition of phospholipids of human spermatozoa. *Int J Androl* 21:154-162.

Zhang HB, Lu MS, Ma CY, Wang L, Li X, Chen ZJ. 2008. Early apoptotic changes in human spermatozoa and their relationships with conventional semen parameters and sperm DNA fragmentation. *Asian J Androl* 10:227-235.

Zini A, Bielecki R, Phang D, Zenzes MT. 2001. Correlations between two markers of sperm DNA integrity, DNA denaturation and DNA fragmentation, in fertile and infertile men. *Fertil Steril* 75:674-677.

Zini A, Garrels K, Phang D. 2000. Antioxidant activity in the semen of fertile and infertile men. *Urology* 55:922-926.

Zini A, Lamirande E, Gagnon C. 1993. Reactive oxygen species in semen of infertile patients: levels of superoxide dismutase- and catalase-like activities in seminal plasma and spermatozoa. *Int J Androl* 16:183-188.

Zorn B, Vidmar G, Meden-Vrtovec H. 2003. Seminal reactive oxygen species as predictors of fertilization, embryo quality and pregnancy rates after conventional *in vitro* fertilization and intracytoplasmic sperm injection. *Int J Androl* 26:279-285.

Zorn B, Virant-Klun I, Meden-Vrtovec H. 2000. Semen granulocyte elastase: its relevance for the diagnosis and prognosis of silent genital inflammation. *Hum Reprod* 15:1978-1984.

