



Electromyography-Based Control of Lower Limb Prostheses: A Systematic Review

Downloaded from: <https://research.chalmers.se>, 2023-10-28 13:45 UTC

Citation for the original published paper (version of record):

Ahkami, B., Ahmed, K., Thesleff, A. et al (2023). Electromyography-Based Control of Lower Limb Prostheses: A Systematic Review. IEEE Transactions on Medical Robotics and Bionics, 5(3): 547-562. <http://dx.doi.org/10.1109/TMRB.2023.3282325>

N.B. When citing this work, cite the original published paper.

© 2023 IEEE. Personal use of this material is permitted. Permission from IEEE must be obtained for all other uses, in any current or future media, including reprinting/republishing this material for advertising or promotional purposes, or reuse of any copyrighted component of this work in other works.

Electromyography-Based Control of Lower Limb Prostheses: A Systematic Review

Bahareh Ahkami¹, Graduate Student Member, IEEE, Kirstin Ahmed², Alexander Thesleff³,
Levi Hargrove⁴, Member, IEEE, and Max Ortiz-Catalan⁵, Senior Member, IEEE

Abstract—Most amputations occur in lower limbs and despite improvements in prosthetic technology, no commercially available prosthetic leg uses electromyography (EMG) information as an input for control. Efforts to integrate EMG signals as part of the control strategy have increased in the last decade. In this systematic review, we summarize the research in the field of lower limb prosthetic control using EMG. Four different online databases were searched until June 2022: Web of Science, Scopus, PubMed, and Science Direct. We included articles that reported systems for controlling a prosthetic leg (with an ankle and/or knee actuator) by decoding gait intent using EMG signals alone or in combination with other sensors. A total of 1,331 papers were initially assessed and 121 were finally included in this systematic review. The literature showed that despite the burgeoning interest in research, controlling a leg prosthesis using EMG signals remains challenging. Specifically, regarding EMG signal quality and stability, electrode placement, prosthetic hardware, and control algorithms, all of which need to be more robust for everyday use. In the studies that were investigated, large variations were found between the control methodologies, type of research participant, recording protocols, assessments, and prosthetic hardware.

Index Terms—Electromyography (EMG), pattern recognition, lower limb amputation, control architecture, control algorithms, movement intention recognition.

Manuscript received 29 July 2022; revised 12 March 2023 and 15 May 2023; accepted 16 May 2023. Date of publication 7 June 2023; date of current version 9 August 2023. This article was recommended for publication by Associate Editor Q. Wang and Editor P. Dario upon evaluation of the reviewers' comments. This work was supported in part by the Promobilia Foundation; in part by the IngaBritt and Arne Lundbergs Foundation; in part by the Swedish Research Council (Vetenskapsrådet); and in part by the National Institutes of Health under Grant R01HD079428. (Corresponding author: Max Ortiz-Catalan.)

Bahareh Ahkami and Kirstin Ahmed are with the Center for Bionics and Pain Research, 43130 Mölndal, Sweden, and also with the Department of Electrical Engineering, Chalmers University of Technology, 41296 Gothenburg, Sweden (e-mail: ahkami@chalmers.se; kirstin@chalmers.se).

Alexander Thesleff is with the Center for Bionics and Pain Research, 43130 Mölndal, Sweden, also with the Department of Electrical Engineering, Chalmers University of Technology, 41296 Gothenburg, Sweden, and also with Integrum AB, 43153 Mölndal, Sweden (e-mail: alexander.thesleff@integrum.se).

Levi Hargrove is with the Department of Physical Medicine and Rehabilitation, Northwestern University, Chicago, IL 60611 USA, and also with the Regenstien Foundation Center for Bionic Medicine, Shirley Ryan AbilityLab, Chicago, IL 60611 USA (e-mail: l-hargrove@northwestern.edu).

Max Ortiz-Catalan is with the Center for Bionics and Pain Research, 43130 Mölndal, Sweden, also with the Department of Electrical Engineering, Chalmers University of Technology, 41296 Gothenburg, Sweden, also with the Operational Area 3, Sahlgrenska University Hospital, 41345 Gothenburg, Sweden, and also with Bionics Institute, Melbourne, VIC 3002, Australia (e-mail: maxortizc@outlook.com).

Digital Object Identifier 10.1109/TMRB.2023.3282325

I. INTRODUCTION (BACKGROUND)

IN THE United States, it is estimated that by 2050 there will be 3.6 million people living with amputation compared with 2.2 million people today (2021) [1]. In developed countries, disease accounts for most amputations and the majority occur in the lower limb (LL) [1], predominantly due to the prevalence of diabetes mellitus and associated vascular complications [2]. By the turn of this century, 93% of all lower-limb amputations were the result of vascular disease (28% transtibial, 26% transfemoral [3]). In many low and middle income countries, trauma has been documented as the primary cause of limb amputation [4], [5], [6].

In 2017, it was estimated that limb amputation due to trauma is 57.7 million. Of people with traumatic amputation, an estimated 31.7% had unilateral lower limb amputations (28.9 million, Uncertainty Interval (UI) = 26.9–32.1), 19.6% had unilateral upper limb amputations (11.3 million, UI = 10.6–12.1), 19.1% had bilateral upper limb (11.0 million, UI = 10.3–11.9), and 11.1% had bilateral lower limb (6.4 million, UI = 5.9–7.0) [4].

Unlike upper limb prostheses, no commercially available lower limb prosthesis integrates signals from the user's neuromuscular system for control. The high number of lower limb amputations, combined with the lack of neuromuscular-controlled lower limb prostheses, highlights an area of opportunity to develop more intuitive, reliable, and functional bionic legs. There are currently three categories of lower limb prostheses: passive, semi-active, and active. Passive prostheses are entirely mechanical, while semi-active prostheses use microprocessor systems that measure information from mechanical (non-bioelectric) sensors to modulate artificial joint impedance usually via hydraulics or pneumatics. Finally, active prostheses provide propulsion or “power” using actuators (*i.e.*, motors at the joints) to compensate for lost musculature [7] and are also controlled using a microprocessor. Harnessing neuromuscular information to control semi-active and active prostheses can provide a more biomimetic, functional, and superior experience for the users. EMG signals can be recorded non-invasively using electrodes placed on the surface of the skin (sEMG) or invasively using surgically implanted electrodes (iEMG) [8]. Unless the amputation was accompanied by nerve injury or other motor impairments, motor commands to residual muscles, previously responsible for actuating the missing joint(s), can still be generated voluntarily by the patient. Neuromuscular controlled prostheses can take advantage of

this by recording EMG signals from the user's residual muscles to control powered artificial joints [9]. However, with proximal amputations there may be too few muscles remaining to intuitively control the missing joints. Surgical techniques such as Targeted Muscle Reinnervation (TMR) [10] or Agonist-antagonist Myoneural Interface (AMI) [11] have proven successful in overcoming this problem by creating new EMG sources for prosthetic leg control. Moreover, a variety of signal processing and machine learning algorithms have been employed to further improve the neural decoding of motor commands in individuals with lower limb amputations [12], [13], [14], [15], [16], [17].

A limitation in the use of sEMG for prosthetic control is the long-term stability of the signals. Conversely, iEMG produces signals with long-term stability and has shown to be a clinically viable solution in individuals with upper limb amputations [18], [19], [20], [21]. The lack of neuromuscular integration in lower limb prosthetic development to date can be attributed to several factors. Firstly, the consequence of unreliable control in a lower limb prosthesis is serious; error may result in a fall and subsequent injury. Secondly, non-invasive recordings of sEMG using suspension sockets are challenging due to pistoning (vertical movement inside the socket) and changes in pressure between the prosthetic socket and residual limb. Thirdly, active devices, which have the capability to perform more activities, such as repositioning the joints to prepare for transfers, have only recently become commercially available. These are the categories of devices that arguably have the most to gain from a neuromuscular control paradigm.

Direct skeletal fixation of an implant harnessing the biological process of osseointegration, as opposed to suspension by a socket [22], can provide a gateway for a permanent wired connection between implanted electrodes and the prosthesis [18], [23]. In participants with direct skeletal fixation, problems caused by pistoning and changes in pressure between the socket and residual limb are alleviated, thus sEMG can provide reasonable control.

In this systematic review, we provide an overview of pioneering and state-of-the-art research in the field of lower limb prosthetic control using EMG signals. Two reviews including EMG control were published during the preparation of this article and have been included herein for completeness [24], [25]. Fleming et al. [24] conducted a topical review, and Cimolatto et al. [25] presented a systematic review including 56 articles. Our systematic review covered a larger volume of articles (121) and provides further division of control strategies using EMG. We investigated and categorized control methods into three main groups: 1) Direct control, where the modulated EMG activation directly and continuously relates to the ankle or knee joint actuator either in a virtual environment or to control a prosthesis; 2) Model-based control, in which body sections are modeled as rigid segments connected by rotational joints and driven by joint actuators (which model muscles) [26]; and 3) machine learning control, where a decoder is trained to distinguish EMG patterns between different locomotion modes, gait phases, or leg movements. This method of categorization differs from the review by Fleming et al. [24] highlighting model-based control in its own

category to reflect its increasing popularity. Challenges in controlling lower limb prostheses with EMG are also summarized and discussed.

II. METHOD

The systematic review followed the Preferred Reporting Items for Systematic Reviews and Meta-Analyses (PRISMA) [27].

A. Search Strategy and Eligibility Criteria

Four online databases (Web of Science, Scopus, PubMed, Science Direct) were searched until June 2022 for peer-reviewed, English-language research articles, and conference proceedings published at any time. The search was conducted using the keywords: *prosthetic* OR *prostheses* OR *prosthesis* OR *"artificial limb"* AND ((*"lower limb"*) OR *leg* OR *ankle* OR *knee*) AND *control* AND (Electromyography OR *EMG* OR *neural*).

To be included, the studies must have recorded EMG signals, and used the recorded signals to control an ankle, leg, virtual object, or to classify gait intent or locomotion modes. We excluded publications that were not in English, were patents, books, or abstracts. Similarly, articles describing control methods for an exoskeleton, or EMG for general rehabilitation purposes, were excluded. Furthermore, publications that focused exclusively on surgical methods, developments or improvements of leg prostheses, control hardware, or firmware, were excluded. Studies on non-human subjects and studies using biosensors other than EMG (such as EEG) were also excluded.

B. Selection Process

The literature search and article screening procedure were performed according to the sequence of steps shown in Fig. 1. A total of 121 articles passed the screening procedure and were thus assessed in detail and included in the review.

III. RESULTS

A. Research Participants

Of the 121 included articles, 59 articles (~50%) included able-bodied research participants, 50 articles (~40%) included individuals with amputation, and 12 articles (~10%) included research participants from both cohorts (Fig. 2).

B. Research Participant Activities: Assessments

Activities were divided into those with research participants performing non-weight-bearing (Fig. 3) and weight-bearing activities (Fig. 4). In more than 50% of the included studies, research participants were asked to perform weight-bearing activities. Of the weight-bearing activities, gait studies were the most common in which the goal was to classify the locomotion mode (e.g., walking, stair ascent, etc.) or functional phase of gait [28], [29], [30]. The stance (support) phase of gait comprises 60% of the gait cycle and are split into: heel contact, loading response, mid stance, terminal stance, and push off. The swing phase of gait comprise 40% of the gait

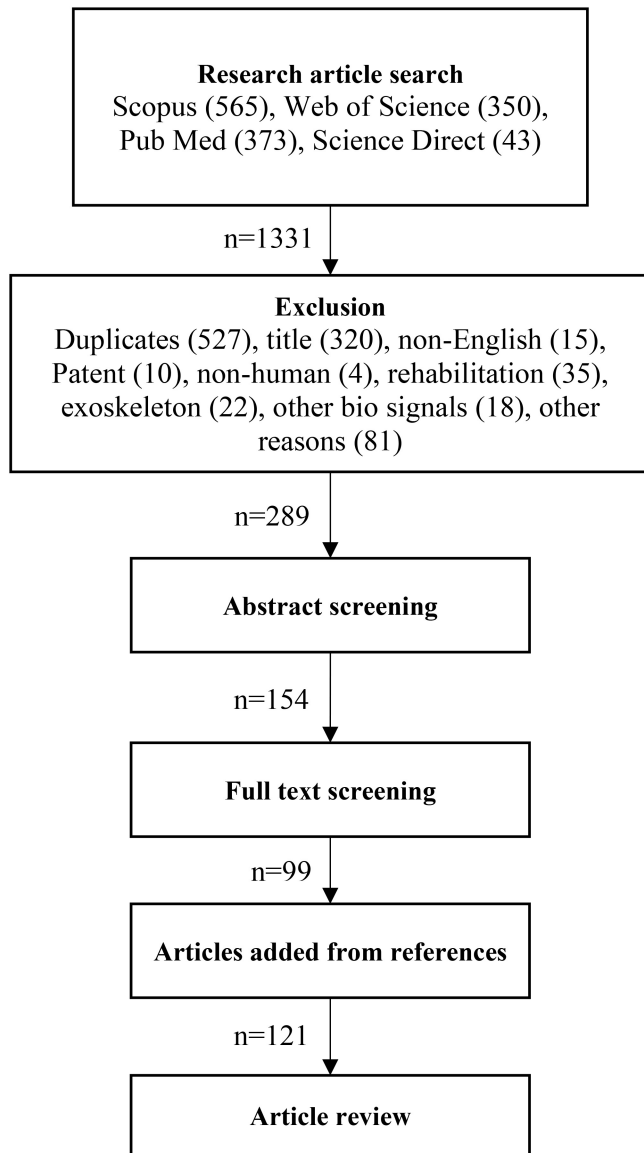


Fig. 1. Flowchart of the systematic literature review. Searching keywords in four databases resulted in 1331 papers. After exclusion based on exclusion criteria, abstract and full text screening, 121 papers remained.

cycle and are made up of initial swing, mid swing and terminal swing [31].

The non-weight bearing activities (Fig. 3) in the reviewed studies were of variable format and the research participants were asked to perform movements with their phantom (individuals with amputation) or intact (able bodied research participants) limb. In some studies the research participants were asked to mimic pre-programmed motion trajectories [32], [33], [34], [35], [36] or to perform isolated single joint movements (one degree of freedom (DOF)) [37], [38], [39]. In other studies the participants controlled a virtual object in a 2D or 3D space [11], [40], [41], [42], [43].

C. Myoelectric Sources

The muscles used for EMG acquisition differed between the studies depending on research participant anatomy, type

of study, and the joints to control. Frequently reported muscle groups used for EMG acquisition in research participants with transfemoral amputation were: semitendinosus, biceps femoris, tensor fasciae latae, rectus femoris, vastus lateralis, vastus medialis, sartorius, adductor magnus, and gracilis [10], [28], [39], [44], [45], [46], [47], [48], [49], [50], [51], [52], [53], [54], [55]. In research participants with transtibial amputation, we found the gastrocnemius medial and lateralis, tibialis anterior muscle to be the most frequently reported muscles used for EMG acquisition [32], [33], [43], [56], [57], [58]. The number of electrodes varied but it was as high as 192.

D. Non-Biological Sensors

To date, sensors providing mechanical information have been the only source of information for lower limb control algorithms in commercial devices. Inertial Measurement Unit (IMU) sensors provide useful control feedback for lower limb support or swing gait stage detection and are used alone or in combination with depth sensors and goniometers [59], laser distance sensors [34], or loadcells [60]. A foot switch sensor can indicate the temporal gait stage determined by ground contact and was a commonly reported sensor in the literature [49], [58], [61], [62], [63], [64], [65], [66]. An overview of sensors and common placements can be found in Fig. 5 sensors can be placed on the amputated side or on both legs [53] but the majority of studies reviewed used sensors only on the amputated side. This makes sense from the bionic leg control perspective when solely harvesting information from mechanical sensors, however from a person-centered approach, a control method that additionally receives input from biological signals is logical. EMG signals have been used in research devices in combination with mechanical sensors to inform the gait phase or locomotion mode. Performance of pattern recognition algorithms was found to improve when EMG was added [47], [51], [52], [59], [67], [68].

E. EMG Control Methods

The use of EMG in the control of lower limb prostheses has become a fast-growing research area. Here we further divided in direct control, model-based control, and machine learning control. The next section provides an overview of each of these methods.

1) *Direct Control*: This method uses a modulated EMG signal to activate the ankle or knee joint actuator directly and continuously either in a virtual or prosthetic device [69]. Direct control studies quantify performance using outcome metrics such as ankle/knee prosthetic joint angle or distance moved between target and a virtual object. While direct control was predominantly reported in the reviewed studies involving transtibial amputees, it has also been utilized in studies with participants with transfemoral amputation. In these cases, EMG signals were recorded from proximal muscles to determine knee torque during the stance phase [70].

Nineteen out of 121 studies used the method of direct control of which 13 controlled an ankle joint actuator and 6 controlled a knee joint actuator. A full list of the reviewed studies using direct control are shown in Table I.

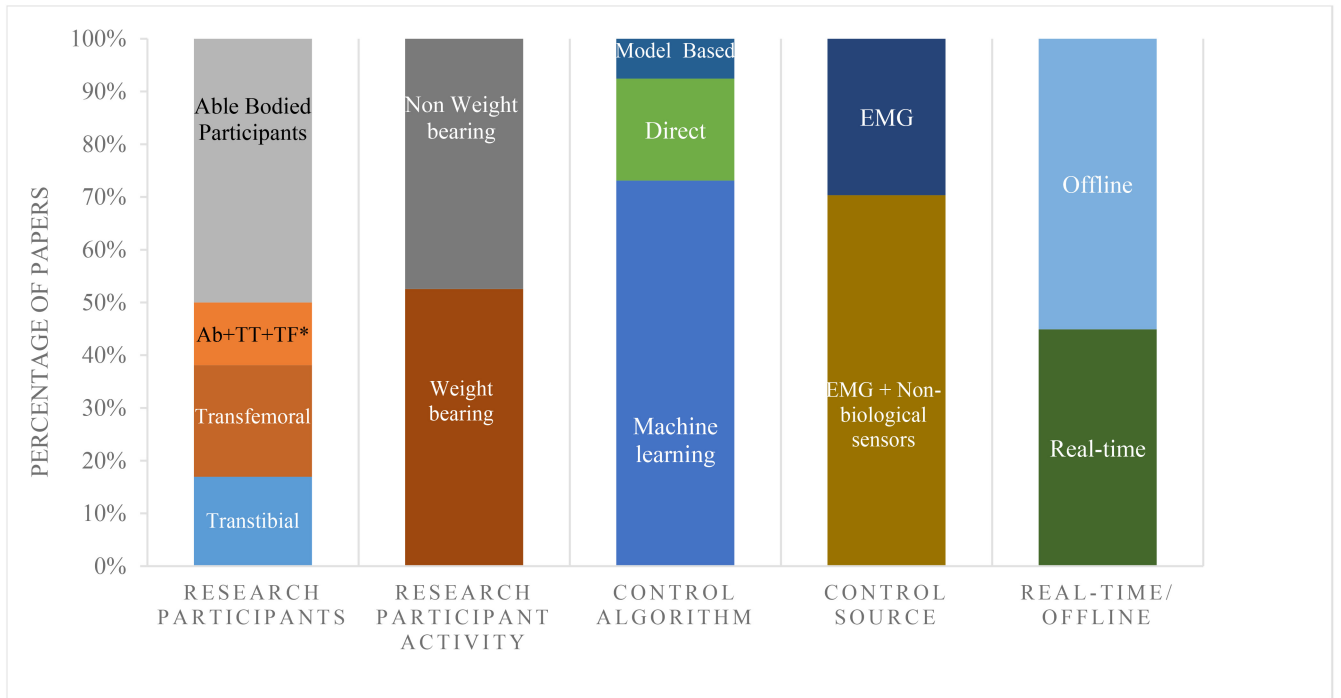


Fig. 2. Proportion of studies in different categories. Studies are divided into five categories: research participants, research participant activity, control algorithm, control source, and real-time or Offline processing of data. TF: Research participants with transfemoral amputation, TT: Research participants with transtibial amputation, Ab: Able-bodied research participants.

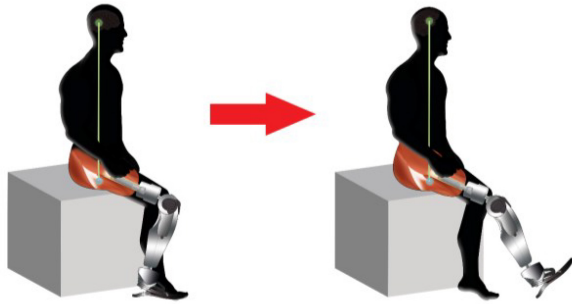


Fig. 3. Seated knee extension and flexion as an example of a non-weight bearing activity.

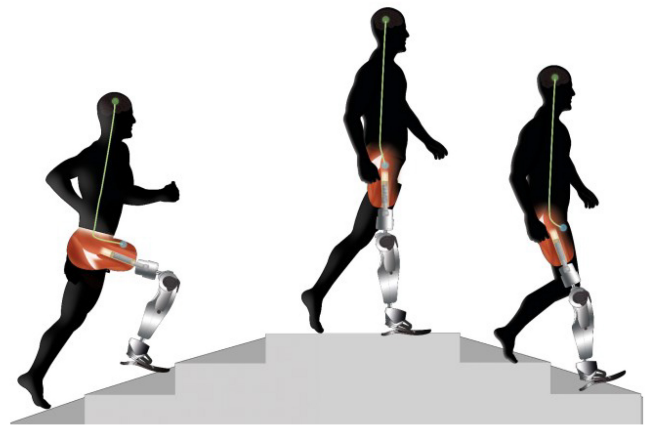


Fig. 4. A transition from stair ascent to walking and from walking to stair descent as an example of a weight bearing movement to classify locomotion modes.

The activation of the prosthesis can be designed to be proportional to the magnitude of the EMG signal, this is proportional control. A frequently reported experiment was to move a virtual object in a 2-D space directly and proportionally to the EMG signal while performing plantar and dorsiflexion [11], [33], [40], [41], [71]. Fleming et al. designed a virtual pendulum proportionally controlled by EMG signals and showed an anticipatory postural adjustment in participants with transtibial amputations [43]. The computational cost is relatively low in direct control, even including proportionality, and therefore it is a common and valuable method of control for devices with lower degrees of freedom. However, obtaining enough independent signals to directly control several degrees of freedom is challenging, where model-based and machine learning approaches are commonly used (Table I).

2) *Model-Based Control*: Model-based control is the second category of EMG control frequently reported in the reviewed literature. Here body segments are modeled as rigid

bodies connected by rotational joints and driven by joint actuators (which model muscles) [26]. Hoover and Fite modeled the lower limb muscles as parallel spring-damper systems, where co-activating the muscles modulated the net mechanical impedance of the joint [72]. Furthermore, they produced a knee model in which the knee moment was a function of the thigh EMG [73]. In a different approach, Hargrove et al., designed an active-reactive model where joint torque was determined by the difference in agonist/antagonistic muscle pair activations, and joint impedance was determined by the sum of the agonist/antagonist muscle pair activations [46]. Minor et al., used an autoregressive model with a low frequency EMG envelope as another way to predict the knee moment [74]. Most modeling methods relied on a motion

TABLE I
SUMMARY OF RESEARCH STUDIES USING DIRECT CONTROL

TITLE	RESEARCH SUBJECTS	SUBJECT ACTIVITY	CONTROL SOURCE	REAL-TIME/OFFLINE	TRANSITION DETECTION	#EMG Channels
[70]	AB/TF	Weight bearing	EMG + load cell, joint motion sensor, force sensitive resistors	Real-time/offline	No	8
[101]	TF	Weight bearing	EMG +load cell, force sensitive resistors	Real-time	No	8
[102]	AB/TF	Weight bearing	EMG	Real-time	No	2
[103]	AB	Weight bearing	EMG + force resistors	Real-time	No	5
[104]	TT	Weight bearing	EMG	Real-time	No	7
[105]	TT	Weight bearing	EMG + IMU, loadcell	Real-time/offline	Yes	2
[106]	AB	Weight bearing	EMG +force resistors	Real-time	No	5
[61]	AB/TF	Weight bearing	EMG + knee angle sensor, pressure sensor, torque sensor,	Real-time	No	1
[107]	AB	Non- weight bearing	EMG	Real-time	No	8
[71]	AB	Non- weight bearing	EMG	Real-time	No	2
[108]	TT	Weight bearing	EMG	Real-time	No	2
[40]	AB/TT	Non- weight bearing	EMG	Real-time	No	NI
[33]	AB/TT	Non- weight bearing	EMG	Real-time	No	2
[109]	TT	Weight bearing	EMG	Real-time	No	NI
[43]	TT	Weight bearing	EMG	Real-time	No	2
[11]	TT	Non-weight bearing	EMG	Real-time	No	4
[36]	AB	Non-weight bearing	EMG	Real-time	No	2
[69]	TT	Weight bearing	EMG	Real-time	Yes	2
[41]	TT	Non-weight bearing	EMG	Real-time	No	NI
[110]	TT	Weight bearing	EMG	Offline	No	NI
[111]	TF	Weight bearing	EMG	Real-time	No	NI
[112]	TT	Weight bearing	EMG	Real-time	No	NI
[113]	TT	Weight bearing	EMG	Real-time	No	192
[114]	TT	Weight bearing	EMG	Real-time	No	2

TF: Research participants with transfemoral amputation, TT: Research participants with transtibial amputation, Ab: Able-bodied research participants

capture system within a specialist gait lab. Whereas specialized equipment restricts the exploitation of the model-based control method, it does provide a well validated basis for

model creation. Additionally, it allows for generalizable models that can be fitted to new subjects unlike personalized machine learning methods (see Section III-E3). For example

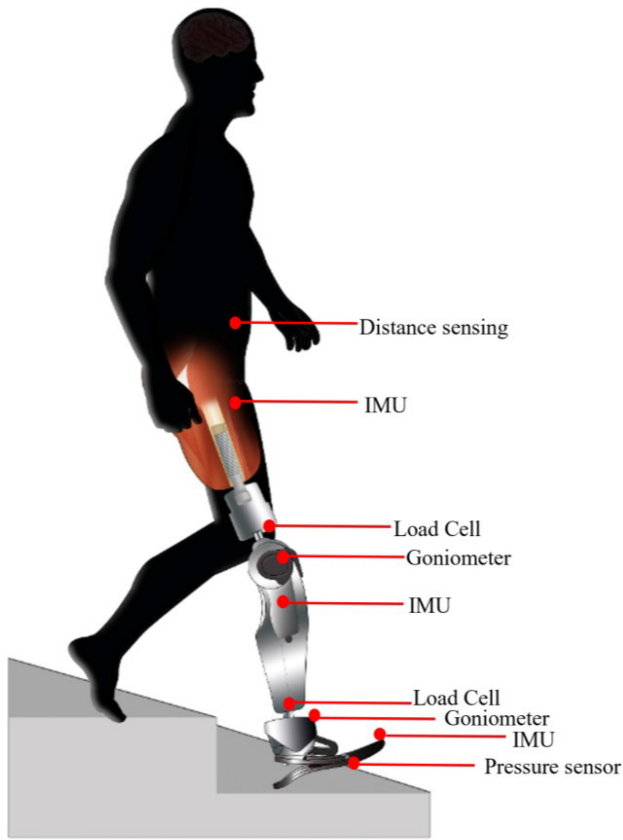


Fig. 5. Illustration of different non-biological sensors and their placements. Sensors reported in the studies were distance sensors, IMUs, loadcells, goniometers, and pressure sensors. They were used either in combination or alone.

Cimolatto et al. developed a body model from sEMG signal and IMUs to control a prosthetic leg during gait [75]; these results were comparable to those obtained using motion capture systems.

3) Machine Learning Control Methods:

a) Overview: Machine Learning methods can be used for detecting different gait phases, locomotion modes, and transitions between locomotion modes. They also can be used for decoding non weight bearing movements such as knee or ankle flexion/extension [76]. Control methods based on machine learning do not need an *a priori* model but often require data to train a classifier or decoder. In brief, the decoding of motor volition using EMG signals can be divided into 1) pre-processing, 2) feature extraction, 3) classification, and 4) post-processing.

In the pre-processing phase, the raw EMG signal undergoes *filtering* and *segmentation* in “time windows” to remove noise from the raw data and to parse relevant portions of the continuous EMG signal (Fig. 6c), respectively. The continuous EMG can be segmented in overlapping and non-overlapping time windows. In the overlapping method, two consecutive windows have an overlap time that is less than the length of the time windows themselves. The time between the beginning of a time window and the next is known as the increment step. Finding the optimal length for a time window

and the increment step to the next is important because long windows and steps reduce the real-time responsiveness of the system, while short windows may lack information for an accurate prediction. As a result, a balance between using more information for decoding and responsiveness must be maintained. Segmentation is followed by a feature extraction process where characteristics of each time window are extracted to form a set of features or feature vector (Fig. 6d). EMG features can be extracted in either time, frequency, or time frequency domains. An example of a time-frequency extraction method is the wavelet packet transform [74], [75]. After feature extraction, dimensionality reduction can decrease the number of features processed by classifiers to supply only the most relevant information.

In the classification phase, the feature vector is transferred to a pre-trained decoder (e.g., Support Vector Machine) to classify intended movement (Fig. 6e). One method used often in upper limb control is continuous classification [79], [80]. Using this method, classification takes place regardless of the state of the arm, hands, and fingers. In lower limb control, the EMG signal in gait is “quasi-cyclic” since gait phases from heel strike to toe off are approximately cyclical. Consequently, it is sensible to perform locomotion classification at specific events instead of continuously and therefore Phase-Dependent Classification is commonly employed in lower limb control.

The post-processing phase is where the effect of misclassifications can be attenuated using filtering techniques (e.g., majority voting or using a velocity ramp [81]).

b) Results of the reviewed publications: (Pre-Processing methods):

Filtering: Of the 121 publications using EMG, 81 applied a 20 – 500 Hz bandpass filter to remove unwanted low frequency artifacts and high frequency noise [82]. Filtering should be done in a way to avoid the loss of useful data or cause any unwanted changes such as obscuring an adverse event. This is important when trying to avoid stumble and falls.

Segmentation: Most of the studies used a window length of 150 - 300 ms with an overlap of 20 - 50 ms [83], [84], [85]. In almost all the included studies in the machine learning category, the window length was constant throughout the experiment. There were a few exceptions to this, in which varying window lengths were employed, for example, Miller et al. introduced a segmentation method with three EMG sub-windows per gait cycle (one gait cycle was defined as ipsilateral heel strike to ipsilateral push off): 1) heel strike to heel strike + 200 ms, 2) push off – 300 ms to push off, and 3) push off to push off + 100 ms [58].

Feature Extraction: In the reviewed publications, the most often reported features were the average absolute value, zero crossings, number of slope sign changes, and waveform length, which are all time domain features [49], [54], [86], [87]. Use of frequency domain features were reported less frequently, this may be related to their computational cost. Among the studies that reported dimensionality reduction, principle component analysis (PCA) was often the method used [35], [88] where a set of variables was transformed to a lower dimension set

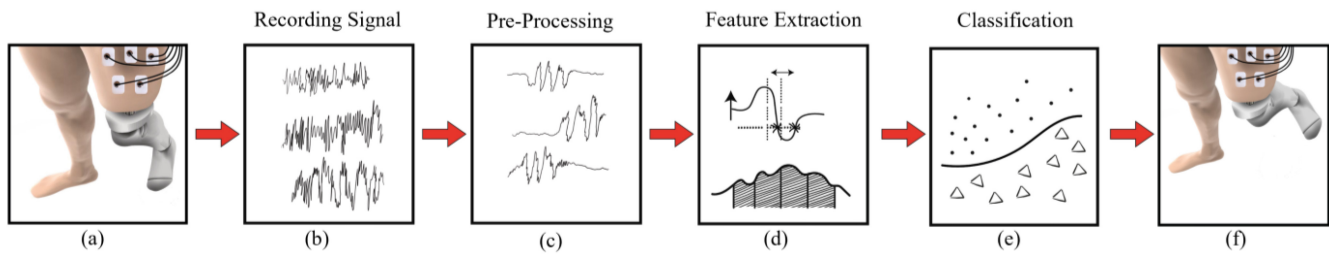


Fig. 6. Data processing in a machine learning EMG controlled prosthetic leg. a) Surface electrodes on the residual limb of a transfemoral osseointegrated participant, b) EMG signal obtained from the residual limb, c) Filtering and segmentation of the EMG signal d) Feature extraction from the EMG signal in time domain and frequency domain, e) Classification of movement intention from the extracted features, f) The prosthesis moving according to the intention of the participant.

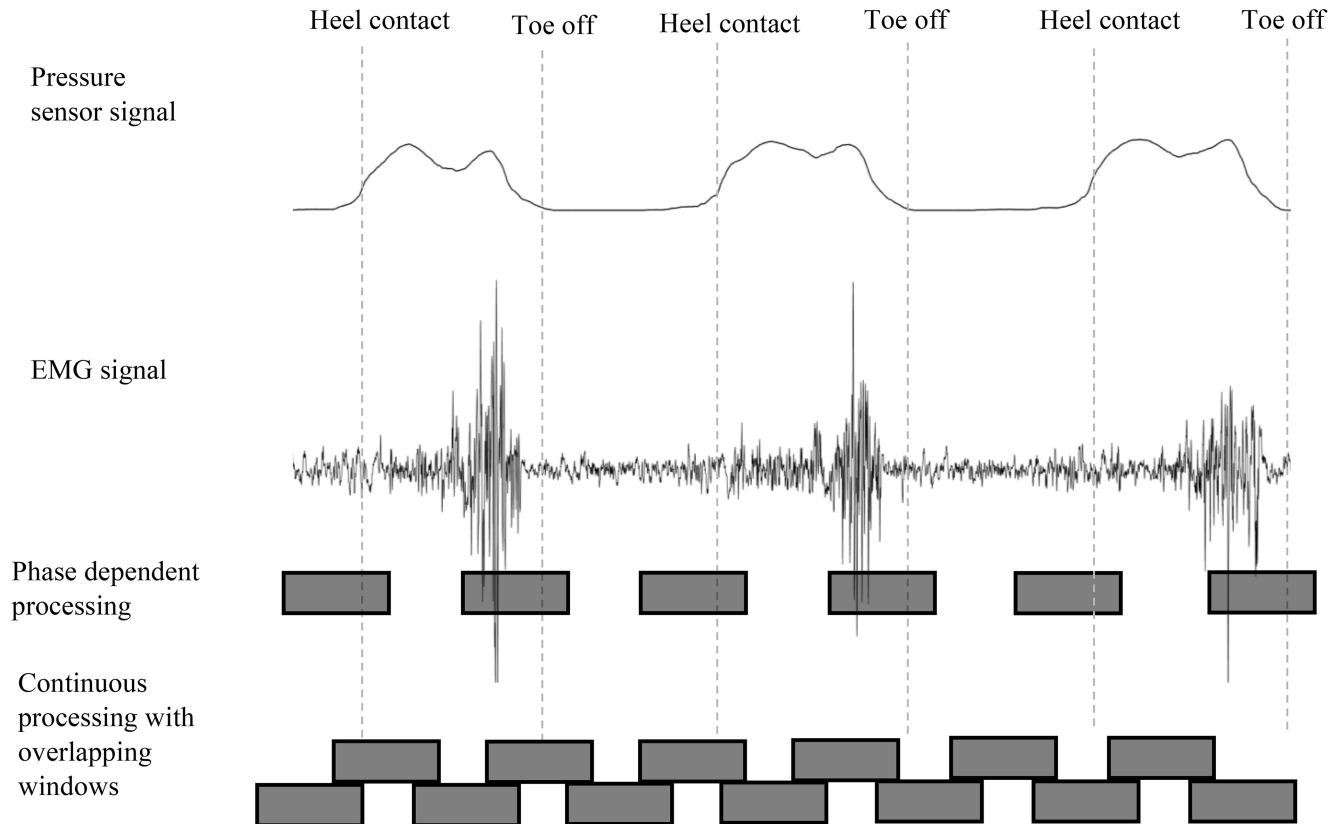


Fig. 7. Illustration showing the difference between phase-dependent and continuous methods of classification. In the phase-dependent classification, a time window at every pre-defined gait phase (toe off, heel contact) is classified, while in continuous classification, every consecutive window is classified.

of uncorrelated variables (principal components). Farrell and Herr used a distinct dimension reduction method called the wrapper method [64]. This is a sequential-forward-search that finds a subset of features that maximizes the leave-one-out cross-validation performance on the training.

Classification:

Phase-dependent classification: Phase dependent classification (Fig. 7) classifies the signal features at specific moments during every previously defined phase (*e.g.*, heel strike or toe off). A signal window around the defined phase is classified. All reviewed publications employing this method use a similar approach, with slight differences in the number of gait phases, windowing, or type of classifier. For example, Young and Hargrove, and Spanias et al. used eight different phases of the gait cycle; 0%, 25%, 50%, and 75% of swing and 0%, 25%, 50%, and 75% of stance [29], [45]. Zhang et al. used

four clinically defined gait phases: heel contact, mid stance, terminal stance and swing [88]. Huang et al. used toe off and heel contact [49]. Classification can be performed either before or after each of the selected gait phases. Furthermore, as shown in [49], [58], [59], [87], [89] it is possible to have two distinct classifiers, for both a window before and a window after a gait phase. Of the publications reviewed, Linear Discriminate Analysis (LDA), Support Vector Machine (SVM), a combination of LDA and Bayesian methods, and neural networks have been used to predict the next locomotion mode (see Table I). A limitation of phase-dependent classification is the requirement for a gait phase input (windowing is relative to the phase changes). Gait phase can be obtained using non biological sensors (such as a load cell), discussed separately in this review. A complete list of publications reviewed using phase dependent classification can be found in Table II.

TABLE II
SUMMARY OF RESEARCH STUDIES USING PHASE DEPENDENT CLASSIFIER

Title	Amputation Level	Activity	Control /Classification algorithm	Transition Detection(Y/N)	Real-Time/Offline	# EMG Channels
[28]	TF/AB	Level-ground walking, ramps, and stairs	Entropy-based adaptation (EBA), Support Vector Machine (SVM)	Y	Real-Time/Offline	16
[29]	TF	Level-ground walking, ramps, and stairs	Baseline Configuration, Time History Configuration, Mode-Specific Configuration, Mode Specific and Time History Configuration	Y	Offline	NI
[88]	TF	Level-ground walking, ramps, and stairs	Linear Discriminant Analysis (LDA)	Y	Real-Time/Offline	10
[44]	TF	Level-ground walking, ramps, and stairs	Dynamic Bayesian Network (DBN), LDA	Y	Offline	9
[45]	TF	Level-ground walking, ramps, and stairs	LDA and log likelihood threshold	Y	Offline	8
[86]	TF	Level-ground walking, ramps, and stairs, stepping over an obstacle	LDA	Y	Offline	16
[46]	TF	Level-ground walking, ramps, and stairs	LDA and DBN	Y	Real-Time/Offline	9
[30]	TF	Level-ground walking, ramps, and stairs	Forward- Backward state machine	Y	Real-Time	8
[47]	TF	Sitting, standing, walking	LDA	Y	Real-Time/Offline	8
[83]	TF	Level-ground walking, ramps, and stairs sitting, standing	SVM	Y	Real-Time	10
[10]	TF	Level-ground walking, ramps, and stairs	Dynamic Bayesian Network	Y	Real-Time	96
[48]	TF	Level-ground walking, stair, ramp, sitting, and standing.	SVM, C-support vector classification (C-SVC)	Y	Real-Time/Offline	10
[64]	TT/TF	Level-ground walking, ramps, and stepping over an obstacle	Bayes Classifier	N	Offline	11
[115]	AB	Walking	Back propagation neural network	N	Offline	8
[49]	TF/AB	Level-ground walking, stepping over an obstacle, stairs, turning, and standing still	LDA	N	Offline	16
[67]	TF	Level-ground, ramps, and stairs	LDA	Y	Offline	9
[50]	TF	Level-ground walking, ramps, and stairs	DBN	Y	Offline	9
[116]	AB	Level-ground walking, ramps, and stairs	Hidden Markov Model (HMM)	Y	Offline	4
[117]	TF	Level-ground walking, ramps, and stairs	LDA	Y	Offline	9
[51]	TF	Level-ground walking, ramps, and stairs, stepping over an obstacle	SVM	Y	Real-Time	16
[52]	TF	Level ground, ramps, and stairs	DBN	Y	Offline	9
[63]	TF	Level-ground walking, ramps, and stairs	LDA	Y	Offline	1

(Continued)

Continuous classification: Despite being a less frequently reported method of classification in lower limb control, several studies we reviewed did report it in non-weight bearing

movement (presumably since they are non-cyclic) [35], [40]. Unlike phase dependent classification, continuous classification is possible without the input of gait phase state (Fig. 7,

TABLE II
(Continued.) SUMMARY OF RESEARCH STUDIES USING PHASE DEPENDENT CLASSIFIER

[54]	TF	Level-ground walking, ramps, and stairs	SVM	Y	Offline	7
[87]	AB	Sitting and standing	LDA	N	Real-Time/Offline	7
[89]	AB	level-ground walking, ramps, and stairs	LDA	Y	Offline	5
[118]	AB	Level walking	SVM	N	Offline	4
[58]	TT/AB	Level ground at three speeds, ramp ascent/descent, and stair ascent/descent.	LDA, SVM	N	Offline	4
[55]	TF	Walking, stairs sitting and standing	Binary tree	Y	Offline	6
[119]	AB	Level-ground walking, ramps, and stairs	Unscented Kalman Filter	N	Offline	6
[83]	TF	Level-ground walking, ramps, and stairs	SVM	Y	Real-Time/Offline	10
[120]	AB	Walking with different speeds	Neural network, Genetic Algorithms	N	Offline	5
[77]	AB	Standing and walking on slope, flat and stair	Neural network	N	Offline	NI
[59]	AB	Walking	LDA	N	offline	14
[85]	AB	Level-ground walking, ramps, and stairs	LDA, SVM	Y	Offline	15
[121]	TF/AB	Walking	LDA	N	Offline	6
[99]	TF	Walking with obstacle	Mahalanobis distance	N	Offline	10
[92]	AB	Level-ground walking, ramps, and stairs, standing	SVM	Y	Real-Time/Offline	NI
[122]	TT	Walking	Neural network with exogenous input (NARX)	Y	Offline	5
[53]	TF	Walking, stairs, ramps	SVM, LDA, ANN	Y	Offline	14
[62]	AB	Walking, stairs, ramps	LDA, SVM, NN	Y	Offline	12
[57]	TT	Dorsiflexion and plantarflexion	LDA	N	Offline	5

TF: Research participants with transfemoral amputation, TT: Research participants with transtibial amputation, Ab: Able-bodied subjects

bottom row). The gait phase can be recognized [66], [90], instead of predicting the locomotion mode or user motion intent [91]. This offers the distinct advantage of not relying

on sensor interpretation of gait phase, but they cannot be used to detect different locomotion modes. From the EMG signal, windows are selected and processed with a fixed pattern. Gaps

TABLE III
SUMMARY OF RESEARCH STUDIES USING CONTINUOUS CLASSIFIER

Title	Amputation Level	Activity	Control /Classification algorithm	Transition Detection(Y/N)	Real-Time/Offline	# EMG Channels
[123]	AB	Plantar-flexion and dorsiflexion	Support Vector Machine (SVM)	N	Offline	9
[124]	AB	Walking, ascending Stairs	Matching scores (MS) and discriminating functions in the form of simple if-else rules	Y	Offline	NI
[125]	AB	Walking, stair Ascend, stair Descend, ramp ascend, and ramp descend	SVM, Linear Discriminant Analysis (LDA), and Neural network (NN)	N	Offline	NI
[32]	TT	Mimic pre-programmed motion trajectories of the graphical display	NN	N	Offline	2
[57]	TT	Dorsiflexion and plantarflexion movements with a resting pause in-between	LDA	N	Offline	5
[126]	AB	Level Walking, Stair Ascent, Stair Descent, Ramp Ascent, and Ramp Descent	NN	N	offline	5
[127]	AB	Walking	NN	N	offline	2
[128]	AB	Walking, Stair Ascend, and Stair Descend	SVM, LDA, ANN, decision tree (DT), k-nearest neighbor (KNN) and naive bias (NB) and k-fold cross validation		Offline	NI
[78]	AB	Sitting, standing up	Packet wavelet	N	Offline	4
[84]	AB	Walking, stairs	LDA, DT, KNN, NB, NN, SVM	N	Offline	NI
[66]	AB	Walking	LDA	N	Offline	4
[129]	TF	Walking	NN	N	Offline	2
[130]	AB	Walking	NN	-	Offline	4
[131]	AB	Walking	NN	N	Offline	2
[91]	AB	Walked at three self-selected speeds, level-ground and a custom made fixed, uneven terrain shown	LDA	N	Offline	8
[132]	AB	Walking	NN	N	Offline	2
[133]	AB	Walk with different pace	LDA, ANN, NB	N	Offline	3
[134]	AB	<u>Classification between rest and beginning of movement</u>	<u>Hilbert Huang transfer</u>	<u>N</u>	<u>Offline</u>	<u>NI</u>
[90]	AB	Walking	LDA, SVM	N	Offline	4

(Continued)

or overlaps can be considered between windows. A complete list of publications that used continuous classification can be found in Table III.

Post Processing: Majority vote was a frequently reported method for reducing the effect of misclassification in the literature we reviewed. For instance, if a five-point majority vote

TABLE III
(Continued.) SUMMARY OF RESEARCH STUDIES USING CONTINUOUS CLASSIFIER

[38]	TF/AB	Knee flexion, knee extension, ankle plantar flexion, ankle dorsiflexion, femoral rotation, and tibial rotation	LDA	N	Real-Time/Offline	9
[135]	TF/AB	Sitting, standing	LDA, Dynamic Pattern Classification Strategy	N	Real-Time	7
[136]	AB	Walking with three different speeds	NN, SVM	N	Offline	3
[137]	AB	Upstairs, downstairs, uphill and downhill	Wavelet	N	Offline	2
[138]	AB	Standing up from a chair and sitting down on the chair	Naive Bayes, k-nearest neighbor, SVM	N	Offline	4
[139]	AB	Walking modes with three different speeds	Neural network	N	Offline	5
[140]	AB	Walking, stairs	DT, KNN, NN, SVM, LDA	N	Offline	2
[141]	AB	Cycling	NN	N	Offline	7
[142]	AB	Walking, Stairs	LDA, SVM, NN	Y	offline	5
[143]	AB	Standing, Walking, Running	ANN, dynamic recurrent neural network (DRNN)	N	Offline	6
[37]	AB	Knee extension/flexion, femur rotation in/ out, tibia rotation in/out and ankle dorsiflexion/plantarflexion	LDA	N	offline	8
[101]	TF	<u>Standing, squatting, and sit-stand transitions</u>	<u>Impedance control</u>	<u>N</u>	<u>Real-Time</u>	<u>8</u>
[56]	TF/AB	Rotation of the foot, ankle dorsiflexion and ankle plantarflexion, ankle eversion and ankle inversion (or ankle pronation/supination)	LDA	-	Real-Time/Offline	NI
[144]	TF/TT/AB	Walking, ramps	SVM, LDA		Offline	5
[145]	AB	Ankle and knee movements	CNN (Convolutional Neural Network)	-	Real-Time	4
[146]	AB	Walking, stairs, ramps	NN	N	Offline	4

TF: Research participants with transfemoral amputation, TT: Research participants with transtibial amputation, Ab: Able-bodied subjects

was used, transition did not occur until at least three of the previous five overlapping windows agreed on the new locomotion mode. Other studies employed a voting scheme which

increased the number of voting decisions each time a rare transition was identified, such as the transition from stair ascent to stepping over an obstacle [102], [103]. In these studies, the

regular number of voting points was five; the voting length increased to 15 when a rare condition occurred. Huang et al. used a finite state machine and majority vote whereby a state transition was only executed when a valid transition condition was met [87]. In terms of accuracy of control, majority vote does seem to provide accurate enough results, but it can add unacceptable delays to the system, which makes it hard to use in real time. Finding and implementing more post processing methods will be an inevitable part of advancing this field.

Performance metrics: Deriving performance metrics for classification systems is an important step to evaluate the performance of the control system. There are different ways to evaluate a classification algorithm in upper limb control such as the TAC test [93] and Motion Test [80], [94]. These are not frequently reported in lower limb control due to the aforementioned quasi-cyclic motion of the limb. Instead, reported metrics for lower limb control were accuracy/error calculated as a ratio of correctly classified testing samples divided by the total number of applied testing samples. The extent to which offline performance measures represent real-time control performance is questionable for upper-limb control approaches [80], [95]. This is also an open question when quantifying performance in lower-limb control systems. An added complication is that the user needs the device to function properly to ambulate; the device needs to hold the person up while they ambulate. If the device does not function properly, the person may not be able to even attempt the activity, or transition between activities. An important metric was the number of missed locomotion transitions or critical error (an error that causes the user to feel unstable) [96]. While few studies have investigated the performance between offline and online metrics, it appears that they are correlated [46]. More work needs to be completed in this area and a platform in which to compare control methods using the universal metrics would be an advantage.

IV. CHALLENGES

The following summary outlines reported challenges that contemporary lower limb technology has not yet overcome.

EMG signal quality and data acquisition: EMG signal quality relies on factors such as electrode interface, availability of muscles, and the acquisition system [97]. Gradual variation of EMG signals over time is another challenge resulting from physical (electrode shift and impedance change) and/or physiological (human adaption and muscle fatigue) changes resulting in signal quality decay [54]. An implant surgically connected directly to the skeleton (via osseointegration) onto which an artificial limb can be attached is an alternative to a prosthetic socket. This connection method has been successfully used as a gateway to collect iEMG signals from research participants [18]. As a result, the deleterious effects of the prosthetic socket on sEMG is avoided and a much higher quality and more robust EMG signal can be obtained [22].

Terrain transition detection: One of the most challenging parts of controlling a prosthesis is transition detection, as it should be accurate and in a timely manner to control

the prosthesis safely and smoothly [52], [69], [87]. There is potential to improve the accuracy of transition detection; perhaps by employing some of the techniques described in this review such as the conditional post processing technique used by Huang et al. [87]. Promising advancements in accuracy are expected with the use of iEMG. It may be that as the field moves towards this paradigm for EMG signal production (whether through an osseointegrated implant or via the implantation of wireless iEMG) that an improvement in terrain transition detection is obtained [18], [98].

Stumbling: It is critical to have a fast stumble detection method in lower limb control to avoid falling and subsequent injury [99]. Another challenge is handling perturbations during normal gait, such as slipping on a wet surface [100], which presents a challenge maintaining balance with a prosthetic leg. Transition and stumble detection and prevention can be improved by acquiring high quality EMG signal in combination with mechanical sensor signals. In addition to improved hardware, and more optimized software, it would help the development of the field if there were a dedicated platform on which to compare control methods in a scientific manner. Developing in this way by building on the work of previous groups would accelerate the field in our understanding of how to improve accuracy and reliability of these control algorithms.

V. CONCLUSION

We reviewed the literature on the control of powered prosthetic legs using EMG. We described work undertaken in direct control, model-based, and machine learning methods. Of the reviewed literature direct control and machine learning methods for control have produced favorable results in transtibial and transfemoral research participants. However, it remains challenging to control a prosthetic leg with EMG signal in an environment outside the lab, such as at the home (the ultimate goal) and particularly for transfemoral amputations. Direct control is frequently reported but is only suitable for a few degrees of freedom; more complex movement intentions can be decoded using machine learning methods. Looking forwards, we think machine learning methods should be the focus for the control of lower limb prostheses with EMG signals.

In addition to control methods, we described the activity types, electrode placement, and how EMG based control was augmented with non-biological sensors. Weight bearing tasks were predominantly reported in the literature, but there was large variability in the number of research participants and electrode positioning. Foot switches and load cells were the most often reported mechanical sensors that were used in combination with EMG signals.

We paid special consideration to studies using real-time decoding of locomotion modes since this better reflects home-use of a prosthesis. The goal of this review was to present available technologies and to highlight the opportunities in the field of lower limb prosthetic control using myoelectric signals. However, there was a challenge comparing studies due to the large variability in methods and outcome metrics; in future work a standardization of these would be useful.

REFERENCES

- [1] K. Ziegler-Graham, E. J. MacKenzie, P. L. Ephraim, T. G. Travison, and R. Brookmeyer, "Estimating the prevalence of limb loss in the United States: 2005 to 2050," *Arch. Phys. Med. Rehabil.*, vol. 89, no. 3, pp. 422–429, Mar. 2008, doi: [10.1016/j.apmr.2007.11.005](#).
- [2] P. W. Moxey et al., "Lower extremity amputations—A review of global variability in incidence," *Diabetic Med.*, vol. 28, no. 10, pp. 1144–1153, Oct. 2011, doi: [10.1111/j.1464-5491.2011.03279.x](#).
- [3] R. Renzi, N. Unwin, R. Jubelirer, and L. Haag, "An international comparison of lower extremity amputation rates," *Ann. Vasc. Surg.*, vol. 20, no. 3, pp. 346–350, May 2006, doi: [10.1007/s10016-006-9044-9](#).
- [4] C. L. McDonald, S. Westcott-McCoy, M. R. Weaver, J. Haagsma, and D. Kartin, "Global prevalence of traumatic non-fatal limb amputation," *Prosthet. Orthot. Int.*, vol. 45, no. 2, pp. 104–114, Apr. 2021, doi: [10.1177/0309364620972258](#).
- [5] M. Moini, M. R. Rasouli, A. Khaji, F. Farshidfar, and P. Heidari, "Patterns of extremity traumas leading to amputation in Iran: Results of Iranian National Trauma Project," *Chin. J. Traumatol.*, vol. 12, no. 2, pp. 77–80, 2009, doi: [10.3760/cma.j.issn.1008-1275.2009.02.003](#).
- [6] J. Shaw et al., "Quality of life and complications in lower limb amputees in Tanzania: Results from a pilot study," *Lancet Global Health*, vol. 6, p. S18, Mar. 2018, doi: [10.1016/s2214-109x\(18\)30147-5](#).
- [7] C. M. Lara-barrios, A. Blanco-ortega, C. H. Guzmán-valdivia, K. D. B. Valles, A. Blanco-ortega, and C. H. Guzmán-valdivia, "Literature review and current trends on transfemoral powered prostheses," *Adv. Robot.*, vol. 32, no. 2, pp. 1–12, 2018, doi: [10.1080/01691864.2017.1402704](#).
- [8] M. Ortiz-Catalan, R. Brånemark, B. Häkansson, and J. Delbeke, "On the viability of implantable electrodes for the natural control of artificial limbs: Review and discussion," *Biomed. Eng. Online*, vol. 11, p. 33, Jun. 2012, doi: [10.1186/1475-925X-11-33](#).
- [9] M. Ortiz-Catalan, "Engineering and surgical advancements enable more cognitively integrated bionic arms," *Sci. Robot.*, vol. 6, no. 58, 2021, Art. no. eabk3123, doi: [10.1126/scirobotics.abk3123](#).
- [10] L. J. Hargrove et al., "Robotic leg control with EMG decoding in an amputee with nerve transfers," *New England J. Med.*, vol. 369, no. 13, pp. 1237–1242, 2013, doi: [10.1056/nejmoa1300126](#).
- [11] T. R. Clites et al., "Proprioception from a neurally controlled lower-extremity prosthesis," *Sci. Transl. Med.*, vol. 10, no. 443, p. 8373, May 2018, doi: [10.1126/scitranslmed.aap8373](#).
- [12] R. Fluit, E. C. Prinsen, S. Wang, and H. Van Der Kooij, "A comparison of control strategies in commercial and research knee prostheses," *IEEE Trans. Biomed. Eng.*, vol. 67, no. 1, pp. 277–290, Jan. 2020, doi: [10.1109/TBME.2019.2912466](#).
- [13] J. Wright, V. G. Macefield, A. Van Schaik, and J. C. Tapson, "A review of control strategies in closed-loop neuroprosthetic systems," *Front. Neurosci.*, vol. 10, pp. 1–13, Jul. 2016, doi: [10.3389/fnins.2016.00312](#).
- [14] C. Ferreira, L. P. Reis, and C. P. Santos, "Review of control strategies for lower limb prostheses," in *Advances in Intelligent Systems and Computing*, vol. 418. Cham, Switzerland: Springer, 2016, pp. 209–220, doi: [10.1007/978-3-319-27149-1_17](#).
- [15] M. R. Tucker et al., "Control strategies for active lower extremity prosthetics and orthotics: A review," *J. Neuroeng. Rehabil.*, vol. 12, p. 1, Jan. 2015, doi: [10.1186/1743-0003-12-1](#).
- [16] A. S. Voloshina and S. H. Collins, *A Review of Design and Control Approaches in Lower-Limb Prosthetic Devices*, Stanford Univ., Stanford, CA, USA, 2019.
- [17] N. A. Hamzaid, N. H. M. Yusof, and F. Jasni, "Sensory systems in micro-processor controlled prosthetic leg: A Review," *IEEE Sens. J.*, vol. 20, no. 9, pp. 4544–4554, May 2020, doi: [10.1109/JSEN.2019.2944653](#).
- [18] M. Ortiz-Catalan, E. Mastinu, P. Sassu, O. Aszmann, and R. Brånemark, "Self-contained neuromusculoskeletal arm prostheses," *New England J. Med.*, vol. 382, no. 18, pp. 1732–1738, Apr. 2020, doi: [10.1056/nejmoa1917537](#).
- [19] E. Mastinu et al., "Grip control and motor coordination with implanted and surface electrodes while grasping with an osseointegrated prosthetic hand," *J. Neuroeng. Rehabil.*, vol. 16, no. 1, pp. 1–10, 2019, doi: [10.1186/s12984-019-0511-2](#).
- [20] A. Middleton and M. Ortiz-Catalan, "Neuromusculoskeletal arm prostheses: Personal and social implications of living with an intimately integrated bionic arm," *Front. Neurobot.*, vol. 14, p. 39, Jan. 2020, doi: [10.3389/fnbot.2020.00039](#).
- [21] M. Ortiz-Catalan, B. Häkansson, and R. Brånemark, "An osseointegrated human-machine gateway for long-term sensory feedback and motor control of artificial limbs," *Sci. Transl. Med.*, vol. 6, no. 257, Oct. 2014, Art. no. 257re6, doi: [10.1126/scitranslmed.3008933](#).
- [22] A. Thesleff, R. Brånemark, B. Häkansson, and M. Ortiz-Catalan, "Biomechanical characterisation of bone-anchored implant systems for amputation limb prostheses: A systematic review," *Ann. Biomed. Eng.*, vol. 46, no. 3, pp. 377–391, 2018, doi: [10.1007/s10439-017-1976-4](#).
- [23] M. Ortiz-Catalan, B. Hakansson, and R. Branemark, "A bone-anchored arm prosthetic," *Sci. Transl. Med.*, vol. 6, no. 257, Jun. 2014, Art. no. 120836.
- [24] A. Fleming, N. Stafford, S. Huang, X. Hu, D. P. Ferris, and H. H. Huang, "Myoelectric control of robotic lower limb prostheses: A review of electromyography interfaces, control paradigms, challenges and future directions," *J. Neural Eng.*, vol. 18, no. 4, 2021, Art. no. 41004, doi: [10.1088/1741-2552/ac1176](#).
- [25] A. Cimolatto, J. J. M. Driessen, L. S. Mattos, E. De Momi, M. Laffranchi, and L. De Michieli, "EMG-driven control in lower limb prostheses: A topic-based systematic review," *J. Neuroeng. Rehabil.*, vol. 19, no. 1, pp. 1–26, 2022, doi: [10.1186/s12984-022-01019-1](#).
- [26] D. B. Popović, "3-Principles of command and control for neuroprostheses," in *Implantable Neuroprostheses for Restoring Function*, K. Kilgore, Ed. New York, NY, USA: Woodhead, 2015, pp. 45–58.
- [27] D. Moher et al., "Preferred reporting items for systematic review and meta-analysis protocols (PRISMA-P) 2015 statement," *Syst. Rev.*, vol. 4, no. 1, p. 1, 2015, doi: [10.1186/2046-4053-4-1](#).
- [28] M. Liu, F. Zhang, and H. Huang, "An adaptive classification strategy for reliable locomotion mode recognition," *Sensors*, vol. 17, no. 9, p. 2020, Sep. 2017, doi: [10.3390/s17092020](#).
- [29] A. J. Young and L. J. Hargrove, "A classification method for user-independent intent recognition for transfemoral amputees using powered lower limb prostheses," *IEEE Trans. Neural Syst. Rehabil. Eng.*, vol. 24, no. 2, pp. 217–225, Feb. 2016, doi: [10.1109/TNSRE.2015.2412461](#).
- [30] J. A. Spanias, A. M. Simon, S. B. Finucane, E. J. Perreault, and L. J. Hargrove, "Online adaptive neural control of a robotic lower limb prosthesis," *J. Neural Eng.*, vol. 15, no. 1, pp. 1–31, 2018, doi: [10.1088/1741-2552/aa92a8](#).
- [31] J. Perry and J. R. Davids, "Gait analysis: normal and pathological function," *J. Children Orthopaedics*, vol. 12, no. 6, p. 815, 1992.
- [32] S. K. Au, P. Bonato, and H. Herr, "An EMG-position controlled system for an active ankle-foot prosthesis: An initial experimental study," in *Proc. 9th Int. Conf. Rehabil. Robot. (ICORR)*, 2005, pp. 375–379, doi: [10.1109/ICORR.2005.1501123](#).
- [33] B. Chen, Q. Wang, and L. Wang, "Promise of using surface EMG signals to volitionally control ankle joint position for powered transtibial prostheses," in *Proc. 36th Annu. Int. Conf. IEEE Eng. Med. Biol. Soc. (EMBC)*, 2014, pp. 2545–2548, doi: [10.1109/EMBC.2014.6944141](#).
- [34] M. Liu, D. Wang, and H. H. Huang, "Development of an environment-aware locomotion mode recognition system for powered lower limb prostheses," *IEEE Trans. Neural Syst. Rehabil. Eng.*, vol. 24, no. 4, pp. 434–443, Apr. 2016, doi: [10.1109/TNSRE.2015.2420539](#).
- [35] K. H. Ha, H. A. Varol, and M. Goldfarb, "Volitional control of a prosthetic knee using surface electromyography," *IEEE Trans. Biomed. Eng.*, vol. 58, no. 1, pp. 144–151, Jan. 2011, doi: [10.1109/TBME.2010.2070840](#).
- [36] J. M. Canino and K. B. Fite, "The effects of cutaneous haptic feedback on EMG-based motion control of a transfemoral prosthesis," in *Proc. ASME Dyn. Syst. Control Conf. (DSCC)*, vol. 1, 2016, pp. 1–8, doi: [10.1115/DSCC2016-9778](#).
- [37] T. Afzal, K. Iqbal, G. White, and A. B. Wright, "Task discrimination for non-weight-bearing movements using muscle synergies," in *Proc. IEEE Annu. Int. Conf. Eng. Med. Biol. Soc. (EMBS)*, Nov. 2015, pp. 478–481, doi: [10.1109/EMBS.2015.7318403](#).
- [38] L. J. Hargrove, A. M. Simon, R. Lipschutz, S. B. Finucane, and T. A. Kuiken, "Non-weight-bearing neural control of a powered transfemoral prosthesis," *J. Neuroeng. Rehabil.*, vol. 10, no. 1, p. 1, 2013, doi: [10.1186/1743-0003-10-62](#).
- [39] L. J. Hargrove, A. M. Simon, R. D. Lipschutz, S. B. Finucane, and T. A. Kuiken, "Real-time myoelectric control of knee and ankle motions for transfemoral amputees," *J. Amer. Med. Assoc.*, vol. 305, no. 15, pp. 1542–1544, 2011, doi: [10.1001/jama.2011.465](#).
- [40] R. E. Alcaide-Aguirre, D. C. Morgenroth, and D. P. Ferris, "Motor control and learning with lower-limb myoelectric control in amputees," *J. Rehabil. Res. Dev.*, vol. 50, no. 5, pp. 687–698, 2013, doi: [10.1682/JRRD.2012.06.0115](#).
- [41] S. Huang and H. Huang, "Voluntary control of residual antagonistic muscles in transtibial amputees: Reciprocal activation, coactivation, and

- implications for direct neural control of powered lower limb prostheses," *IEEE Trans. Neural Syst. Rehabil. Eng.*, vol. 27, no. 1, pp. 85–95, Jan. 2019, doi: [10.1109/TNSRE.2018.2885641](https://doi.org/10.1109/TNSRE.2018.2885641).
- [42] A. Fleming, S. Huang, and H. H. Huang, "Coordination of voluntary residual muscle contractions in transtibial amputees: A pilot study," in *Proc. Annu. Int. Conf. IEEE Eng. Med. Biol. Soc. (EMBS)*, Jul. 2018, pp. 2128–2131, doi: [10.1109/EMBC.2018.8512674](https://doi.org/10.1109/EMBC.2018.8512674).
- [43] A. Fleming, S. Huang, and H. Huang, "Proportional myoelectric control of a virtual inverted pendulum using residual antagonistic muscles: Toward voluntary postural control," *IEEE Trans. Neural Syst. Rehabil. Eng.*, vol. 27, no. 7, pp. 1473–1482, Jul. 2019, doi: [10.1109/TNSRE.2019.2922102](https://doi.org/10.1109/TNSRE.2019.2922102).
- [44] A. J. Young, T. A. Kuiken, and L. J. Hargrove, "Analysis of using EMG and mechanical sensors to enhance intent recognition in powered lower limb prostheses," *J. Neural Eng.*, vol. 11, no. 5, 2014, Art. no. 56021, doi: [10.1088/1741-2560/11/5/056021](https://doi.org/10.1088/1741-2560/11/5/056021).
- [45] J. A. Spanias, E. J. Perreault, and L. J. Hargrove, "Detection of and compensation for EMG disturbances for powered lower limb prosthesis control," *IEEE Trans. Neural Syst. Rehabil. Eng.*, vol. 24, no. 2, pp. 226–234, Feb. 2016, doi: [10.1109/TNSRE.2015.2413393](https://doi.org/10.1109/TNSRE.2015.2413393).
- [46] L. J. Hargrove et al., "Intuitive control of a powered prosthetic leg during ambulation: A randomized clinical trial," *J. Amer. Med. Assoc.*, vol. 313, no. 22, pp. 2244–2252, 2015, doi: [10.1001/jama.2015.4527](https://doi.org/10.1001/jama.2015.4527).
- [47] A. M. Simon, N. P. Fey, K. A. Ingraham, A. J. Young, and L. J. Hargrove, "Powered prosthesis control during walking, sitting, standing, and non-weight bearing activities using neural and mechanical inputs," in *Proc. Int. IEEE/EMBS Conf. Neural Eng. (NER)*, 2013, pp. 1174–1177, doi: [10.1109/NER.2013.6696148](https://doi.org/10.1109/NER.2013.6696148).
- [48] F. Zhang and H. Huang, "Source selection for real-time user intent recognition toward volitional control of artificial legs," *IEEE J. Biomed. Health Informat.*, vol. 17, no. 5, pp. 907–914, Sep. 2013, doi: [10.1109/JBHI.2012.2236563](https://doi.org/10.1109/JBHI.2012.2236563).
- [49] H. Huang, T. A. Kuiken, and R. D. Lipschutz, "A strategy for identifying locomotion modes using surface electromyography," *IEEE Trans. Biomed. Eng.*, vol. 56, no. 1, pp. 65–73, Jan. 2009, doi: [10.1109/TBME.2008.2003293](https://doi.org/10.1109/TBME.2008.2003293).
- [50] A. J. Young, A. M. Simon, and L. J. Hargrove, "An intent recognition strategy for transfemoral amputee ambulation across different locomotion modes," in *Proc. Annu. Int. Conf. IEEE Eng. Med. Biol. Soc. (EMBS)*, 2013, pp. 1587–1590, doi: [10.1109/EMBC.2013.6609818](https://doi.org/10.1109/EMBC.2013.6609818).
- [51] H. Huang, F. Zhang, L. J. Hargrove, Z. Dou, D. R. Rogers, and K. B. Englehart, "Continuous locomotion-mode identification for prosthetic legs based on neuromuscular–Mechanical fusion," *IEEE Trans. Biomed. Eng.*, vol. 58, no. 10, pp. 2867–2875, Oct. 2011, doi: [10.1109/TBME.2011.2161671](https://doi.org/10.1109/TBME.2011.2161671).
- [52] J. A. Spanias, A. M. Simon, K. A. Ingraham, and L. J. Hargrove, "Effect of additional mechanical sensor data on an EMG-based pattern recognition system for a powered leg prosthesis," in *Proc. Int. IEEE/EMBS Conf. Neural Eng. (NER)*, Jul. 2015, pp. 639–642, doi: [10.1109/NER.2015.7146704](https://doi.org/10.1109/NER.2015.7146704).
- [53] B. Hu, E. Rouse, and L. Hargrove, "Fusion of bilateral lower-limb neuromechanical signals improves prediction of locomotor activities," *Front. Robot. AI*, vol. 5, pp. 1–16, Jun. 2018, doi: [10.3389/frobt.2018.00078](https://doi.org/10.3389/frobt.2018.00078).
- [54] L. Du, F. Zhang, H. He, and H. Huang, "Improving the performance of a neural-machine interface for prosthetic legs using adaptive pattern classifiers," in *Proc. Annu. Int. Conf. IEEE Eng. Med. Biol. Soc. (EMBS)*, 2013, pp. 1571–1574, doi: [10.1109/EMBC.2013.6609814](https://doi.org/10.1109/EMBC.2013.6609814).
- [55] L. Chen, Z. Yang, C. Zhang, J. Wang, and Y. Li, "Periodic locomotion-model recognition based on electromyography of thigh stump," in *Proc. 24th IEEE Int. Conf. Autom. Comput. Improving Prod. Autom. Comput. (ICAC)*, 2018, pp. 748–753, doi: [10.23919/ICAC.2018.8748990](https://doi.org/10.23919/ICAC.2018.8748990).
- [56] D. C. Tkach, R. D. Lipschutz, S. B. Finucane, and L. J. Hargrove, "Myoelectric neural interface enables accurate control of a virtual multiple degree-of-freedom foot-ankle prosthesis," in *Proc. ICORR*, 2013, pp. 1–8, doi: [10.1109/ICORR.2013.6650499](https://doi.org/10.1109/ICORR.2013.6650499).
- [57] T. Garikayi, D. Van den Heever, and S. Matope, "Analysis of surface electromyography signal features on osteomyoplastic transtibial amputees for pattern recognition control architectures," *Biomed. Signal Process. Control*, vol. 40, pp. 10–22, Feb. 2018, doi: [10.1016/j.bspc.2017.09.007](https://doi.org/10.1016/j.bspc.2017.09.007).
- [58] J. D. Miller, M. S. Beazer, and M. E. Hahn, "Myoelectric walking mode classification for transtibial amputees," *IEEE Trans. Biomed. Eng.*, vol. 60, no. 10, pp. 2745–2750, Oct. 2013, doi: [10.1109/TBME.2013.2264466](https://doi.org/10.1109/TBME.2013.2264466).
- [59] N. E. Krausz, B. H. Hu, and L. J. Hargrove, "Subject-and environment-based sensor variability for wearable lower-limb assistive devices," *Sensors*, vol. 19, no. 22, pp. 1–18, 2019, doi: [10.3390/s19224887](https://doi.org/10.3390/s19224887).
- [60] B. Chen and Q. Wang, "Combining human volitional control with intrinsic controller on robotic prosthesis: A case study on adaptive slope walking," in *Proc. Annu. Int. Conf. IEEE Eng. Med. Biol. Soc. (EMBS)*, Nov. 2015, pp. 4777–4780, doi: [10.1109/EMBC.2015.7319462](https://doi.org/10.1109/EMBC.2015.7319462).
- [61] J. A. Dawley, K. B. Fite, and G. D. Fulk, "EMG control of a bionic knee prosthesis: Exploiting muscle co-contractions for improved locomotor function," in *Proc. IEEE Int. Conf. Rehabil. Robot.*, 2013, pp. 24–29, doi: [10.1109/ICORR.2013.6650389](https://doi.org/10.1109/ICORR.2013.6650389).
- [62] T. Afzal, K. Iqbal, G. White, and A. B. Wright, "A method for locomotion mode identification using muscle synergies," *IEEE Trans. Neural Syst. Rehabil. Eng.*, vol. 25, no. 6, pp. 608–617, Jun. 2017, doi: [10.1109/TNSRE.2016.2585962](https://doi.org/10.1109/TNSRE.2016.2585962).
- [63] F. Barberi et al., "Fast online decoding of motor tasks with single sEMG electrode in lower limb amputees," *Biosyst. Biobot.*, vol. 22, pp. 110–114, Oct. 2019, doi: [10.1007/978-3-030-01887-0_22](https://doi.org/10.1007/978-3-030-01887-0_22).
- [64] M. T. Farrell and H. Herr, "A method to determine the optimal features for control of a powered lower-limb prostheses," in *Proc. Annu. Int. Conf. IEEE Eng. Med. Biol. Soc. (EMBS)*, 2011, pp. 6041–6046, doi: [10.1109/IEMBS.2011.6091493](https://doi.org/10.1109/IEMBS.2011.6091493).
- [65] E. Zheng, L. Wang, K. Wei, and Q. Wang, "A noncontact capacitive sensing system for recognizing locomotion modes of transtibial amputees," *IEEE Trans. Biomed. Eng.*, vol. 61, no. 12, pp. 2911–2920, Dec. 2014, doi: [10.1109/TBME.2014.2334316](https://doi.org/10.1109/TBME.2014.2334316).
- [66] J. Ryu, B. H. Lee, and D. H. Kim, "EMG signal-based gait phase recognition using a GPES library and ISMF," in *Proc. Annu. Int. Conf. IEEE Eng. Med. Biol. Soc. (EMBS)*, Oct. 2016, pp. 2003–2006, doi: [10.1109/EMBC.2016.7591118](https://doi.org/10.1109/EMBC.2016.7591118).
- [67] J. A. Spanias, E. J. Perreault, and L. J. Hargrove, "A strategy for labeling data for the neural adaptation of a powered lower limb prosthesis," in *Proc. 36th Annu. Int. Conf. IEEE Eng. Med. Biol. Soc. (EMBC)*, 2014, pp. 3090–3093, doi: [10.1109/EMBC.2014.6944276](https://doi.org/10.1109/EMBC.2014.6944276).
- [68] N. E. Krausz and L. J. Hargrove, "Sensor fusion of vision, kinetics, and kinematics for forward prediction during walking with a transfemoral prosthesis," *IEEE Trans. Med. Robot. Bionics*, vol. 3, no. 3, pp. 813–824, Aug. 2021, doi: [10.1109/tmr.2021.3082206](https://doi.org/10.1109/tmr.2021.3082206).
- [69] O. A. Kannape and H. M. Herr, "Volitional control of ankle plantar flexion in a powered transtibial prosthesis during stair-ambulation," in *Proc. 36th Annu. Int. Conf. IEEE Eng. Med. Biol. Soc. (EMBC)*, 2014, pp. 1662–1665, doi: [10.1109/EMBC.2014.6943925](https://doi.org/10.1109/EMBC.2014.6943925).
- [70] C. D. Hoover and K. B. Fite, "Preliminary evaluation of myoelectric control of an active transfemoral prosthesis during stair ascent," in *Proc. ASME Dyn. Syst. Control Conf. (DSCC)*, vol. 1, 2010, pp. 801–808, doi: [10.1115/DSCC2010-4158](https://doi.org/10.1115/DSCC2010-4158).
- [71] Y. Asai, S. Tateyama, and T. Nomura, "Learning an intermittent control strategy for postural balancing using an EMG-based human–computer interface," *PLoS ONE*, vol. 8, no. 5, p. 10, 2013, doi: [10.1371/journal.pone.0062956](https://doi.org/10.1371/journal.pone.0062956).
- [72] C. D. Hoover and K. B. Fite, "A configuration dependent muscle model for the myoelectric control of a transfemoral prosthesis," in *Proc. IEEE Int. Conf. Rehabil. Robot.*, 2011, pp. 1–8, doi: [10.1109/ICORR.2011.5975480](https://doi.org/10.1109/ICORR.2011.5975480).
- [73] C. D. Hoover, G. D. Fulk, and K. B. Fite, "Stair ascent with a powered transfemoral prosthesis under direct myoelectric control," *IEEE/ASME Trans. Mechatronics*, vol. 18, no. 3, pp. 1191–1200, Jun. 2013.
- [74] A. Minor, C. A. Gonzalez, and L. Leija, "Low frequency envelopes analysis approach to regulate EMG A/K prosthesis," in *Proc. Annu. Int. Conf. IEEE Eng. Med. Biol.*, vol. 3, 1997, pp. 1278–1281, doi: [10.1109/iembs.1997.756608](https://doi.org/10.1109/iembs.1997.756608).
- [75] A. Cimolatto, G. Milandri, L. S. Mattos, E. De Momi, M. Laffranchi, and L. De Micheli, "Hybrid machine learning-neuromusculoskeletal modeling for control of lower limb prosthetics," in *Proc. IEEE RAS EMBS Int. Conf. Biomed. Robot. Biomechatron.*, Nov. 2020, p. 557–563, doi: [10.1109/BioRob49111.2020.9224448](https://doi.org/10.1109/BioRob49111.2020.9224448).
- [76] E. Lendaro, E. Mastinu, B. Håkansson, and M. Ortiz-Catalan, "Real-time classification of non-weight bearing lower-limb movements using EMG to facilitate phantom motor execution: Engineering and case study application on phantom limb pain," *Front. Neurol.*, vol. 8, p. 470, Sep. 2017, doi: [10.3389/fneur.2017.00470](https://doi.org/10.3389/fneur.2017.00470).

- [77] X. Guo, P. Yang, L. Chen, X. Wang, and L. Li, "Study of the control mechanism of robot-prosthesis based-on the EMG processed," in *Proc. World Congr. Intell. Control Autom.*, vol. 2, 2006, pp. 9490–9493, doi: [10.1109/WCICA.2006.1713840](#).
- [78] C. Lingling, Y. Peng, Z. Linan, and X. Xiaoyun, "Electromyogram signal analysis and movement recognition based on wavelet packet transform," in *Proc. IEEE Int. Conf. Inf. Autom. (ICIA)*, 2009, pp. 1482–1487, doi: [10.1109/ICINFA.2009.5205151](#).
- [79] K. Englehart and B. Hudgins, "A robust, real-time control scheme for multifunction myoelectric control," *IEEE Trans. Biomed. Eng.*, vol. 50, no. 7, pp. 848–854, Jul. 2003, doi: [10.1109/TBME.2003.813539](#).
- [80] M. Ortiz-Catalan, R. Brånemark, and B. Häkansson, "BioPatRec: A modular research platform for the control of artificial limbs based on pattern recognition algorithms," *Source Code Biol. Med.*, vol. 8, no. 1, p. 11, 2013, doi: [10.1186/1751-0473-8-11](#).
- [81] A. M. Simon, L. J. Hargrove, B. A. Lock, and T. A. Kuiken, "A decision-based velocity ramp for minimizing the effect of misclassifications during real-time pattern recognition control," *IEEE Trans. Biomed. Eng.*, vol. 58, no. 8, pp. 2360–2368, Aug. 2011, doi: [10.1109/TBME.2011.2155063](#).
- [82] C. J. De Luca, "The use of surface electromyography in biomechanics," *J. Appl. Biomech.*, vol. 13, no. 2, pp. 135–163, 1997, doi: [10.1123/jab.13.2.135](#).
- [83] F. Zhang, Z. Dou, M. J. Nunnery, and H. Huang, "Real-time implementation of an intent recognition system for artificial legs," in *Proc. IEEE Annu. Int. Conf. Eng. Med. Biol. Soc. (EMBC)*, 2011, pp. 2997–3000.
- [84] R. Gupta and R. Agarwal, "Electromyographic signal-driven continuous locomotion mode identification module design for lower limb prosthesis control," *Arab. J. Sci. Eng.*, vol. 43, no. 12, pp. 7817–7835, 2018, doi: [10.1007/s13369-018-3193-3](#).
- [85] D. Joshi and M. E. Hahn, "Terrain and direction classification of locomotion transitions using neuromuscular and mechanical input," *Ann. Biomed. Eng.*, vol. 44, no. 4, pp. 1275–1284, 2016, doi: [10.1007/s10439-015-1407-3](#).
- [86] H. Huang, Z. Dou, F. Zhang, and M. J. Nunnery, "Improving the performance of a neural-machine interface for artificial legs using prior knowledge of walking environment," in *Proc. IEEE Annu. Int. Conf. Eng. Med. Biol. Soc. (EMBS)*, 2011, pp. 4255–4258, doi: [10.1109/IEMBS.2011.6091056](#).
- [87] H. Huang et al., "Integrating neuromuscular and cyber systems for neural control of artificial legs," in *Proc. 1st ACM/IEEE Int. Conf. Cyber Phys. Syst. (ICCPs)*, 2010, pp. 129–138, doi: [10.1145/1795194.1795213](#).
- [88] F. Zhang, W. Disanto, J. Ren, Z. Dou, Q. Yang, and H. Huang, "A novel CPS system for evaluating a neural-machine interface for artificial legs," in *Proc. IEEE/ACM 2nd Int. Conf. Cyber Phys. Syst. (ICCPs)*, 2011, pp. 67–76, doi: [10.1109/ICCPs.2011.13](#).
- [89] T. Afzal, G. White, A. B. Wright, and K. Iqbal, "Locomotion mode identification for lower limbs using neuromuscular and joint kinematic signals," in *Proc. 36th Annu. Int. Conf. IEEE Eng. Med. Biol. Soc. (EMBC)*, Aug. 2014, pp. 4071–4074, doi: [10.1109/EMBC.2014.6944518](#).
- [90] J. H. Ryu and D. H. Kim, "Multiple gait phase recognition using boosted classifiers based on sEMG signal and classification matrix," in *Proc. ICUIMC*, 2014, pp. 1–4, doi: [10.1145/2557977.2557993](#).
- [91] U. Gregory and L. Ren, "Intent prediction of multi-axial ankle motion using limited EMG signals," *Front. Bioeng. Biotechnol.*, vol. 7, pp. 1–18, Nov. 2019, doi: [10.3389/fbioe.2019.00335](#).
- [92] R. Hernandez, J. Kane, F. Zhang, X. Zhang, and H. Huang, "Towards ubiquitous mobile-computing-based artificial leg control," in *Proc. 9th Annu. IEEE Int. Syst. Conf. (SysCon)*, 2015, pp. 821–827, doi: [10.1109/SYSCON.2015.7116852](#).
- [93] A. M. Simon, L. J. Hargrove, B. A. Lock, and T. A. Kuiken, "Target achievement control test: Evaluating real-time myoelectric pattern-recognition control of multifunctional upper-limb prostheses," *J. Rehabil. Res. Dev.*, vol. 48, no. 6, pp. 619–627, 2011, doi: [10.1682/jrrd.2010.08.0149](#).
- [94] T. A. Kuiken et al., "Targeted muscle reinnervation for real-time myoelectric control of multifunction artificial arms," *J. Amer. Med. Assoc.*, vol. 301, no. 6, pp. 619–628, Feb. 2009, doi: [10.1001/jama.2009.116](#).
- [95] M. Ortiz-Catalan, F. Rouhani, R. Brånemark, and B. Häkansson, "Offline accuracy: A potentially misleading metric in myoelectric pattern recognition for prosthetic control," in *Proc. Annu. Int. Conf. IEEE Eng. Med. Biol. Soc. (EMBS)*, Nov. 2015, pp. 1140–1143, doi: [10.1109/EMBC.2015.7318567](#).
- [96] F. Zhang, M. Liu, and H. Huang, "Effects of locomotion mode recognition errors on volitional control of powered above-knee prostheses," *IEEE Trans. Neural Syst. Rehabil. Eng.*, vol. 23, no. 1, pp. 64–72, Jan. 2015, doi: [10.1109/TNSRE.2014.2327230](#).
- [97] S. Hoffmann and M. Falkenstein, "Predictive information processing in the brain: Errors and response monitoring," *Int. J. Psychophysiol.*, vol. 83, no. 2, pp. 208–212, 2012, doi: [10.1016/j.jpsycho.2011.11.015](#).
- [98] M. Ortiz-Catalan, "Neuroengineering: Deciphering neural drive," *Nat. Biomed. Eng.*, vol. 1, no. 2, p. 34, 2017, doi: [10.1038/s41551-017-0034](#).
- [99] F. Zhang, S. E. D'Andrea, M. J. Nunnery, S. M. Kay, and H. Huang, "Towards design of a stumble detection system for artificial legs," *IEEE Trans. Neural Syst. Rehabil. Eng.*, vol. 19, no. 5, pp. 567–577, Oct. 2011, doi: [10.1109/TNSRE.2011.2161888](#).
- [100] J. Yang et al., "The reaction strategy of lower extremity muscles when slips occur to individuals with trans-femoral amputation," *J. Electromyography Kinesiol.*, vol. 17, no. 2, pp. 228–240, 2007, doi: [10.1016/j.jelekin.2006.01.013](#).
- [101] C. D. Hoover, G. D. Fulk, and K. B. Fite, "The design and initial experimental validation of an active myoelectric transfemoral prosthesis," *J. Med. Devices*, vol. 6, no. 1, pp. 1–12, 2012, doi: [10.1115/1.4005784](#).
- [102] W. R. Dyck, S. Onyshko, and D. A. Hobson, "A voluntarily controlled electrohydraulic above knee prosthesis," *Bull. Prosthet. Res.*, vol. 10, no. 23, pp. 169–186, 1975.
- [103] S. K. Wu, G. Waycaster, and X. Shen, "Active knee prosthesis control with electromyography," in *Proc. ASME Dyn. Syst. Control Conf. (DSCC)*, vol. 1, 2010, pp. 785–791, doi: [10.1115/DSCC2010-4068](#).
- [104] S. Huang, J. P. Wensman, and D. P. Ferris, "An experimental powered lower limb prosthesis using proportional myoelectric control," *J. Med. Devices Trans. ASME*, vol. 8, no. 2, 2014, Art. no. 24501, doi: [10.1115/1.4026633](#).
- [105] B. Chen, Q. Wang, and L. Wang, "Adaptive slope walking with a robotic transtibial prosthesis based on volitional EMG control," *IEEE/ASME Trans. Mechatronics*, vol. 20, no. 5, pp. 2146–2157, Oct. 2015, doi: [10.1109/TMECH.2014.2365877](#).
- [106] S. K. Wu, G. Waycaster, and X. Shen, "Electromyography-based control of active above-knee prostheses," *Control Eng. Pract.*, vol. 19, no. 8, pp. 875–882, 2011, doi: [10.1016/j.conengprac.2011.04.017](#).
- [107] O. Mazumder, A. S. Kundu, and S. Bhaumik, "Generating gait pattern of myoelectric active ankle prosthesis," in *Proc. Recent Adv. Eng. Comput. Sci. (RAECS)*, 2014, pp. 6–8, doi: [10.1109/RAECS.2014.6799554](#).
- [108] S. Huang, J. P. Wensman, and D. P. Ferris, "Locomotor adaptation by transtibial amputees walking with an experimental powered prosthesis under continuous myoelectric control," *IEEE Trans. Neural Syst. Rehabil. Eng.*, vol. 24, no. 5, pp. 573–581, May 2016, doi: [10.1109/TNSRE.2015.2441061](#).
- [109] J. Wang, O. A. Kannape, and H. M. Herr, "Proportional EMG control of ankle plantar flexion in a powered transtibial prosthesis," in *Proc. ICORR*, 2013, pp. 1–5, doi: [10.1109/ICORR.2013.6650391](#).
- [110] B. Silver-thorn, T. Current, and B. Kuhse, "Preliminary investigation of residual limb plantarflexion and dorsiflexion muscle activity during treadmill walking for trans-tibial amputees," *Prosthet. Orthot. Int.*, vol. 36, no. 4, pp. 435–442, 2012, doi: [10.1177/0309364612443379](#).
- [111] G. W. Horn, "Electro-control: An EMG—Controlled A/K prosthesis," *Med. Biol. Eng.*, vol. 10, pp. 61–73, Jan. 1972.
- [112] S. Au, M. Berniker, and H. Herr, "Powered ankle-foot prosthesis to assist level-ground and stair-descent gaits," *Neural Netw.*, vol. 21, no. 4, pp. 654–666, 2008, doi: [10.1016/j.neunet.2008.03.006](#).
- [113] H. Dimitrov, A. M. J. Bull, and D. Farina, "Real-time interface algorithm for ankle kinematics and stiffness from electromyographic signals," *IEEE Trans. Neural Syst. Rehabil. Eng.*, vol. 28, no. 6, pp. 1416–1427, Jun. 2020, doi: [10.1109/TNSRE.2020.2986787](#).
- [114] A. Fleming, S. Huang, E. Buxton, F. Hodges, and H. H. Huang, *Direct Continuous Electromyographic Control of a Powered Prosthetic Ankle for Improved Postural Control After Guided Physical Training: A Case Study*, vol. 2. Cambridge, MA, USA: Cambridge Univ. Press, 2021, doi: [10.1017/wtc.2021.2](#).
- [115] T. Zhang, P. Yang, Q. Liu, L. Chen, and J. Liu, "A research on EMG signal and plantar pressure information for AK prosthetic control," in *Proc. IFMBE*, vol. 19, 2008, pp. 488–491, doi: [10.1007/978-3-540-79039-6_122](#).
- [116] M. Meng, Z. Luo, Q. She, and Y. Ma, "Automatic recognition of gait mode from EMG signals of lower limb," in *Proc. 2nd Int. Conf. Ind. Mechatron. Autom. (ICIMA)*, vol. 1, 2010, pp. 282–285, doi: [10.1109/ICINDMA.2010.5538164](#).

- [117] A. J. Young, A. M. Simon, N. P. Fey, and L. J. Hargrove, "Classifying the intent of novel users during human locomotion using powered lower limb prostheses," in *Proc. Int. IEEE/EMBS Conf. Neural Eng. (NER)*, 2013, pp. 311–314, doi: [10.1109/NER.2013.6695934](https://doi.org/10.1109/NER.2013.6695934).
- [118] Q. She, Z. Luo, M. Meng, and P. Xu, "Multiple kernel learning SVM-based EMG pattern classification for lower limb control," in *Proc. 11th Int. Conf. Control Autom. Robot. Vis. (ICARCV)*, Dec. 2010, pp. 2109–2113, doi: [10.1109/ICARCV.2010.5707406](https://doi.org/10.1109/ICARCV.2010.5707406).
- [119] J. A. Brantley, T. P. Luu, S. Nakagome, and J. L. Contreras-Vidal, "Prediction of lower-limb joint kinematics from surface EMG during overground locomotion," in *Proc. IEEE Int. Conf. Syst. Man Cybern. (SMC)*, Jan. 2017, pp. 1705–1709, doi: [10.1109/SMC.2017.8122861](https://doi.org/10.1109/SMC.2017.8122861).
- [120] L. Chen, X. Xu, P. Yang, X. Guo, and L. Zu, "Stride recognition in the control concept of trans-femoral prosthesis," in *Proc. World Congr. Intell. Control Autom.*, 2008, pp. 7621–7625, doi: [10.1109/WCICA.2008.4594113](https://doi.org/10.1109/WCICA.2008.4594113).
- [121] J. A. Brantley, T. P. Luu, S. Nakagome, and J. L. Contreras-Vidal, "Towards the development of a hybrid neural-machine interface for volitional control of a powered lower limb prosthesis," in *Proc. WeRob*, 2018, pp. 1–8, doi: [10.1109/werob.2017.8383871](https://doi.org/10.1109/werob.2017.8383871).
- [122] S. Farmer, B. Silver-Thorn, P. Voglewede, and S. A. Beardsley, "Within-socket myoelectric prediction of continuous ankle kinematics for control of a powered transtibial prosthesis," *J. Neural Eng.*, vol. 11, no. 5, Oct. 2014, Art. no. 56027, doi: [10.1088/1741-2560/11/5/056027](https://doi.org/10.1088/1741-2560/11/5/056027).
- [123] S. Rahmatian, M. J. Mahjoob, and M. R. Hanachi, "Continuous estimation of ankle joint angular position based on the myoelectric signals," in *Proc. Artif. Intell. Robot. (IRANOPEN)*, 2016, pp. 158–163, doi: [10.1109/RIOS.2016.7529507](https://doi.org/10.1109/RIOS.2016.7529507).
- [124] D. Joshi, B. H. Nakamura, and M. E. Hahn, "High energy spectrogram with integrated prior knowledge for EMG-based locomotion classification," *Med. Eng. Phys.*, vol. 37, no. 5, pp. 518–524, 2015, doi: [10.1016/j.medengphy.2015.03.001](https://doi.org/10.1016/j.medengphy.2015.03.001).
- [125] R. Gupta and R. Agarwal, "Single channel EMG-based continuous terrain identification with simple classifier for lower limb prosthesis," *Biocybern. Biomed. Eng.*, vol. 39, no. 3, pp. 775–788, 2019, doi: [10.1016/j.bbe.2019.07.002](https://doi.org/10.1016/j.bbe.2019.07.002).
- [126] R. Gupta, I. S. Dhindsa, and R. Agarwal, "Continuous angular position estimation of human ankle during unconstrained locomotion," *Biomed. Signal Process. Control*, vol. 60, Jul. 2020, Art. no. 101968, doi: [10.1016/j.bspc.2020.101968](https://doi.org/10.1016/j.bspc.2020.101968).
- [127] A. López-Delis, C. J. Miosso, J. L. A. Carvalho, A. F. da Rocha, and G. A. Borges, "Continuous estimation prediction of knee joint angles using fusion of electromyographic and inertial sensors for active transfemoral leg prostheses," *Adv. Data Sci. Adapt. Anal.*, vol. 10, no. 2, Apr. 2018, Art. no. 1840008, doi: [10.1142/s2424922x18400089](https://doi.org/10.1142/s2424922x18400089).
- [128] R. Gupta and R. Agarwal, "Continuous human locomotion identification for lower limb prosthesis control," *CSI Trans. ICT*, vol. 6, no. 1, pp. 17–31, 2018, doi: [10.1007/s40012-017-0178-4](https://doi.org/10.1007/s40012-017-0178-4).
- [129] A. L. Delis, J. L. A. De Carvalho, G. A. Borges, S. S. De Rodrigues, I. Dos Santos, and A. F. Da Rocha, "Fusion of electromyographic signals with proprioceptive sensor data in myoelectric pattern recognition for control of active transfemoral leg prostheses," in *Proc. 31st Annu. Int. Conf. IEEE Eng. Med. Biol. Soc. Eng. Futur. Biomed. (EMBC)*, 2009, pp. 4755–4758, doi: [10.1109/IEMBS.2009.5334184](https://doi.org/10.1109/IEMBS.2009.5334184).
- [130] L. Chen, P. Yang, X. Xu, X. Guo, and X. Zhang, "Fuzzy support vector machine for EMG pattern recognition and myoelectrical prosthesis control," in *Proc. ISNN*, vol. 4492, 2007, pp. 1291–1298, doi: [10.1007/978-3-540-72393-6_152](https://doi.org/10.1007/978-3-540-72393-6_152).
- [131] J. W. Lee and G. K. Lee, "Gait angle prediction for lower limb orthotics and prostheses using an EMG signal and neural networks," *Int. J. Control Autom. Syst.*, vol. 3, no. 2, pp. 152–158, 2005.
- [132] A. L. Delis, J. L. de Carvalho, A. F. da Rocha, F. A. de Oliveira Nascimento, and G. A. Borges, "Knee angle estimation algorithm for myoelectric control of active transfemoral prostheses," in *Proc. Biomed. Eng. Syst. Technol.*, vol. 52, 2010, pp. 124–135.
- [133] S. Pati, D. Joshi, and A. Mishra, "Locomotion classification using EMG signal—A comparative study," in *Proc. Int. Conf. Inf. Emerg. Technol.*, 2010, pp. 1–9, doi: [10.1109/ICIET.2010.5625677](https://doi.org/10.1109/ICIET.2010.5625677).
- [134] L. Chen, P. Yang, L. Zu, and X. Guo, "Movement recognition by electromyography signal for transfemoral prosthesis control," in *Proc. 4th IEEE Conf. Ind. Electron. Appl. (ICIEA)*, 2009, pp. 1127–1132, doi: [10.1109/ICIEA.2009.5138333](https://doi.org/10.1109/ICIEA.2009.5138333).
- [135] X. Zhang et al., "On design and implementation of neural-machine interface for artificial legs," *IEEE Trans. Ind. Informat.*, vol. 8, no. 2, pp. 418–429, May 2012, doi: [10.1109/TII.2011.2166770](https://doi.org/10.1109/TII.2011.2166770).
- [136] S. Li, H. Lan, S. Liu, and H. Yu, "Optimized recognition method of surface EMG signals multi-parameters based on different lower limb motion velocity," in *Proc. 3rd Asia-Pac. Conf. Intell. Robot Syst. (ACIRS)*, 2018, pp. 1–6, doi: [10.1109/ACIRS.2018.8467256](https://doi.org/10.1109/ACIRS.2018.8467256).
- [137] L. Liu, Y. Song, P. Yang, and Z. J. Liu, "Pattern recognition of artificial legs based on WPT and LVQ," in *Proc. CIAC*, vol. 458, 2018, pp. 247–254, doi: [10.1007/978-981-10-6445-6_28](https://doi.org/10.1007/978-981-10-6445-6_28).
- [138] I. S. Dhindsa, "Performance evaluation of various classifiers for predicting knee angle from electromyography signals," *Exp. Syst.*, vol. 36, no. 3, 2019, Art. no. e12381, doi: [10.1111/exsy.12381](https://doi.org/10.1111/exsy.12381).
- [139] S. Li, L. He, S. Liu, Y. Zhang, and H. Yu, "Recognition of locomotion patterns based on BP neural network during different walking speeds," in *Proc. Chin. Autom. Congr. (CAC)*, Jan. 2017, pp. 5215–5218, doi: [10.1109/CAC.2017.8243706](https://doi.org/10.1109/CAC.2017.8243706).
- [140] R. Gupta and R. Agarwal, "sEMG interface design for locomotion identification," *Int. J. Elect. Electron. Commun. Sci.*, vol. 11, no. 2, pp. 117–126, 2017, doi: [10.5281/zenodo.1339664](https://doi.org/10.5281/zenodo.1339664).
- [141] C. Cui, G. B. Bian, Z. G. Hou, X. L. Xie, L. Peng, and D. Zhang, "SEMG-based prediction of human lower extremity movements by using a dynamic recurrent neural network," in *Proc. 28th Chin. Control Decis. Conf. (CCDC)*, 2016, pp. 5021–5026, doi: [10.1109/CCDC.2016.7531892](https://doi.org/10.1109/CCDC.2016.7531892).
- [142] R. Gupta and R. Agarwal, "Single muscle surface EMGs locomotion identification module for prosthesis control," *Neurophysiology*, vol. 51, no. 3, pp. 191–208, 2019, doi: [10.1007/s11062-019-09812-w](https://doi.org/10.1007/s11062-019-09812-w).
- [143] P. A. Hardaker, B. N. Passow, and D. Elizondo, "State detection from electromyographic signals towards the control of prosthetic limbs," *Proc. 13th U.K. Workshop Comput. Intell. (UKCI)*, 2013, pp. 120–127, doi: [10.1109/UKCI.2013.6651296](https://doi.org/10.1109/UKCI.2013.6651296).
- [144] T. Hussain, N. Iqbal, H. F. Maqbool, M. Khan, M. I. Awad, and A. A. Dehghani-Sanji, "Intent based recognition of walking and ramp activities for amputee using sEMG based lower limb prostheses," *Biocybern. Biomed. Eng.*, vol. 40, no. 3, pp. 1110–1123, 2020, doi: [10.1016/j.bbe.2020.05.010](https://doi.org/10.1016/j.bbe.2020.05.010).
- [145] R. V. Schulte, M. Zondag, J. H. Buurke, and E. C. Prinsen, "Multi-day EMG-based knee joint torque estimation using hybrid neuromusculoskeletal modelling and convolutional neural networks," *Front. Robot. AI*, vol. 9, pp. 1–10, Apr. 2022, doi: [10.3389/frobt.2022.869476](https://doi.org/10.3389/frobt.2022.869476).
- [146] J. Wang, Y. Dai, T. Kang, and X. Si, "Research on gait recognition based on lower limb EMG signal," in *Proc. IEEE Int. Conf. Mechatron. Autom. (ICMA)*, 2021, pp. 212–217, doi: [10.1109/ICMA52036.2021.9512759](https://doi.org/10.1109/ICMA52036.2021.9512759).