



## **Detection of a new molecular cloud in the LHAASO J2108+5157 region supporting a hadronic PeVatron scenario**


Downloaded from: <https://research.chalmers.se>, 2023-10-28 13:55 UTC

Citation for the original published paper (version of record):

De La Fuente, E., Toledano-Juárez, I., Kawata, K. et al (2023). Detection of a new molecular cloud in the LHAASO J2108+5157 region supporting a hadronic PeVatron scenario. *Publication of the Astronomical Society of Japan*, 75(3): 546-566.  
<http://dx.doi.org/10.1093/pasj/psad018>

N.B. When citing this work, cite the original published paper.

# Detection of a new molecular cloud in the LHAASO J2108+5157 region supporting a hadronic PeVatron scenario<sup>†</sup>

Eduardo DE LA FUENTE ,<sup>1,2,\*</sup> Ivan TOLEDANO-JUAREZ,<sup>3</sup> Kazumasa KAWATA,<sup>2</sup> Miguel A. TRINIDAD,<sup>4</sup> Daniel TAFOYA,<sup>5</sup> Hidetoshi SANO,<sup>6</sup> Kazuki TOKUDA,<sup>7</sup> Atsushi NISHIMURA,<sup>8</sup> Toshikazu ONISHI,<sup>9</sup> Takashi SAKO,<sup>2</sup> Binita HONA,<sup>10</sup> Munehiro OHNISHI,<sup>2</sup> and Masato TAKITA<sup>2</sup>

<sup>1</sup>Departamento de Física, CUCEI, Universidad de Guadalajara, Blvd. Marcelino García Barragan 1420, Olímpica, 44430, Guadalajara, Jalisco, México

<sup>2</sup>Institute for Cosmic Ray Research, The University of Tokyo, 5-1-5 Kashiwa-no-Ha, Kashiwa, Chiba 277-8582, Japan

<sup>3</sup>Doctorado en Ciencias en Física, CUCEI, Universidad de Guadalajara, Blvd. Marcelino García Barragan 1420, Olímpica, 44430, Guadalajara, Jalisco, México

<sup>4</sup>Departamento de Astronomía, Universidad de Guanajuato, Apartado Postal 144, 36000, Guanajuato, Guanajuato, México

<sup>5</sup>Department of Space, Earth, and Environment, Chalmers University of Technology, Onsala Space Observatory, 439 92 Onsala, Sweden

<sup>6</sup>Faculty of Engineering, Gifu University, 1-1 Yanagido, Gifu, Gifu 501-1193, Japan

<sup>7</sup>Department of Earth and Planetary Sciences, Faculty of Science, Kyushu University, Nishi-ku, Fukuoka, Fukuoka 819-0395, Japan

<sup>8</sup>Nobeyama Radio Observatory, National Astronomical Observatory of Japan (NAOJ), National Institutes of Natural Sciences (NINS), 462-2 Nobeyama, Minamimaki, Minamisaku, Nagano 384-1305, Japan

<sup>9</sup>Department of Physics, Graduate School of Science, Osaka Metropolitan University, 1-1 Gakuen-cho, Naka-ku, Sakai, Osaka 599-8531, Japan

<sup>10</sup>Department of Physics and Astronomy, University of Utah, 201 Presidents Circle, Salt Lake City, UT 84112, USA

\*E-mail: [eduardo.delafuente@academicos.udg.mx](mailto:eduardo.delafuente@academicos.udg.mx)

<sup>†</sup>As section of the thesis to be submitted by Toledano–Juárez as a partial fulfillment for the requirements of a PhD degree in Physics, Doctorado en Ciencias (Física), CUCEI, Universidad de Guadalajara

Received 2022 December 6; Accepted 2023 March 6

## Abstract

PeVatrons are the most powerful naturally occurring particle accelerators in the Universe. The identification of counterparts associated to astrophysical objects such as dying massive stars, molecular gas, star-forming regions, and star clusters is essential to clarify the underlying nature of the PeV emission, i.e., hadronic or leptonic. We present <sup>12,13</sup>CO ( $J = 2 \rightarrow 1$ ) observations made with the 1.85 m radio-telescope of the Osaka Prefecture University toward the Cygnus OB7 molecular cloud, which contains the PeVatron candidate LHAASO J2108+5157. We investigate the nature of the sub-PeV (gamma-ray) emission by studying the nucleon density determined from the content of H I and H<sub>2</sub>, derived from

the CO observations. In addition to MML[2017]4607, detected via the observations of the optically thick  $^{12}\text{CO}$  ( $J = 1 \rightarrow 0$ ) emission, we infer the presence of an optically thin molecular cloud, named [FKT-MC]2022, whose angular size is  $1^\circ.1 \pm 0^\circ.2$ . We propose this cloud as a new candidate to produce the sub-PeV emission observed in LHAASO J2108+5157. Considering a distance of 1.7 kpc, we estimate a nucleon ( $\text{H I} + \text{H}_2$ ) density of  $37 \pm 14 \text{ cm}^{-3}$ , and a total nucleon mass ( $\text{H I} + \text{H}_2$ ) of  $1.5 \pm 0.6 \times 10^4 M_\odot$ . On the other hand, we confirm that Kronberger 82 is a molecular clump with an angular size of  $0^\circ.1$ , a nucleon density  $\sim 10^3 \text{ cm}^{-3}$ , and a mass  $\sim 10^3 M_\odot$ . Although Kronberger 82 hosts the physical conditions to produce the observed emission of LHAASO J2108+5157, [FKT-MC]2022 is located closer to it, suggesting that the latter could be the one associated to the sub-PeV emission. Under this scenario, our results favour a hadronic origin for the emission.

**Key words:** cosmic rays — gamma rays: ISM — ISM: clouds — ISM: individual objects (LHAASO J2108+5157, Kronberger 82) — ISM: molecules

## 1 Introduction

While human-manufactured particle accelerators can achieve relatively high energies, up to 14 TeV (in a collision) with the Large Hadron Collider and with plans to reach as high as 100 TeV via the future circular collider in the 2040s,<sup>1</sup> it is known that in the Universe there are natural sources that can accelerate particles reaching energies up to hundreds of Exa eV (EeV). Thus, one of the fundamental questions in high-energy physics is: what is the maximum energy to which nature accelerates particles in the Galaxy? The answer to this question can be obtained by studying high-energy radiation and astroparticles (cosmic ray, neutrinos, and gamma rays) produced by one type of the most powerful natural particle accelerators: PeVatrons. Although there is no consensus on its definition, a PeVatron can be considered an astronomical object that can accelerate particles up to PeV energies.

Since high-energy particles produce gamma rays and X-rays, they are studied within the field known as Gamma-ray Astrophysics (GRA). This new research field provides key knowledge to our understanding of the physical laws and mechanisms underlying particle acceleration. In addition, given that cosmic particle accelerators are also sources of non-thermal radiation, GRA creates a connection between the study of high-energy cosmic rays, neutrinos, and gravitational waves and the multi-wavelength astronomy.

The energy regime of the emission studied in GRA can be divided in three: High Energy (0.1–100 GeV), Very High Energy (VHE) (0.1–100 TeV), and Ultra High Energy (UHE) (0.1–100 PeV). Since its emergence as a research field, GRA has gone through three eras sparked by major revolutions: 1. The discovery of energetic phenomena in

the Universe (e.g., the Galactic diffuse gamma rays and the gamma-ray pulsars; the GeV era) by satellite gamma-ray detectors (e.g., EGRET, FERMI-LAT), 2. The development of water Cherenkov (e.g., Milagro and HAWC) and imaging air Cherenkov observatories; the construction of extensive (surface) air shower arrays (e.g., MAGIC, H.E.S.S., VERITAS, ARGO-YBJ, Tibet AS $\gamma$ ), which discovered extremely powerful objects like supernova remnants, pulsar wind nebulae, TeV Halos objects, binaries systems, and active galactic nuclei); the TeV era, and 3. The rise of the UHE observations and the discovery of PeVatrons by HAWC, Tibet AS $\gamma$ , and LHAASO observations: the PeV era.

While cosmic rays with energies  $< 1$  PeV are thought to have a Galactic origin, those with energies  $> 1$  EeV are thought to originate in extra-galactic sources. The transition in between is investigated through the study of PeVatrons. Since 2019, the Tibet AS $\gamma$  (Amenomori et al. 2019, 2021a, 2021b, 2021c), HAWC (Abeysekara et al. 2020, 2021; Albert et al. 2020a), and LHAASO (Cao et al. 2021a, 2021b) experiments have detected a dozen of UHE sources on the Galactic plane. Thus, thanks to PeV astronomy, we became able to investigate particle acceleration within the Galaxy beyond the PeV energy regime. On the other hand, the question of whether only hadrons (protons) or leptons (electrons) should be considered in the acceleration process is critical to understand, e.g., the underlying nature of the observed gamma-ray radiation.

To explain the production of the UHE gamma rays, two scenarios have been proposed: 1. Neutral pion decay caused by the interaction of PeV protons with molecular material of the ambient interstellar medium (ISM), known as the hadronic scenario, and 2. Inverse Compton (IC) scattering, caused by high-energy electrons scattering off ambient interstellar cosmic background photons, diffusive

<sup>1</sup> (<https://fcc-cdr.web.cern.ch>).

starlight and Galactic interstellar IR emission. This one is known as the leptonic scenario. The detection and characterization of atomic hydrogen (H I) and molecular gas are crucial to estimate the density of nucleons that could be interacting with high-energy cosmic rays. This would shed light on determining which of the two proposed gamma-ray emission mechanisms is playing a major role. The most used proxy to probe the physical properties of the neutral molecular component of the ISM is the CO molecule. To this end, CO emission lines are widely used to trace the cold (10–30 K) and dense ( $10^3$ – $10^4$  cm $^{-3}$ ) molecular gas phase of the ISM in the Galaxy (e.g., Sano et al. 2020; Fukui et al. 2021). A detailed survey and study of CO emission from the ISM is necessary to characterize the physical conditions of molecular clouds and material lying nearby gamma-ray sources, which will allow elucidation of the nature and the origin of the high-energy cosmic rays. Therefore, without minimizing the co-acceleration (hadrons and leptons), carrying out a detailed study of the molecular gas in the vicinity of a PeVatron is essential to explore the hadronic nature of the gamma-ray emission.

HAWC (Abeyssekara et al. 2021; Albert et al. 2021), Tibet AS $\gamma$  (Amenomori et al. 2021c), and LHAASO (Cao et al. 2021b) have confirmed the presence of three PeVatrons candidates in the Cygnus constellation: 1. The Cygnus Cocoon powered by Cygnus OB2 association (Ackermann et al. 2011; Aharonian et al. 2019), 2. HAWC J2019+368 powered by PSR J2021+3651 and its associated pulsar wind Dragonfly Nebula (Albert et al. 2021), and 3. LHAASO J2108+5157 (J2108 hereafter) in Cygnus OB7 molecular cloud (COB7-MC hereafter). Within the Cao et al. (2021b) catalogue, where all PeVatrons candidates known to-date are included, J2108 is probably the most intriguing one due to not having a clear or typical counterpart, namely a pulsar, a pulsar wind nebula (PWN), a supernova remnant (SNR), or a TeV halo object (Cao et al. 2021a), albeit extended emission of CO is known to be present in the region. Observations of  $^{12}\text{CO}$  ( $J = 1 \rightarrow 0$ ),  $^{13}\text{CO}$  ( $J = 1 \rightarrow 0$ ) and  $\text{C}^{18}\text{O}$  ( $J = 1 \rightarrow 0$ ) line emission toward this source have been reported (Dobashi et al. 1994, 2014). In addition, prominent star-forming regions are found within a couple-degree-sized region centred at the PeV peak emission of J2108, e.g., Kronberger 80, Kronberger 82 (Kron 82 hereafter; e.g., Kronberger et al. 2006) and IRAS 21046+5110 (IRAS 21046 hereafter; e.g., Kumar et al. 2006).

In this work we present a pioneering study of the COB7 region where we compare  $^{12}\text{CO}$  ( $J = 2 \rightarrow 1$ ) and  $^{13}\text{CO}$  ( $J = 2 \rightarrow 1$ ) line emission observations with the PeV energy gamma-ray emission to investigate the origin and nature of the sub-PeV emission in J2108. In section 2 we give an overview of the Cygnus region, J2108, and its vicinity. The

observations are described in section 3. The methodology is explained in section 4. The results and discussion are presented in section 5. We conclude our work in section 6.

## 2 Sources overview

### 2.1 Cygnus OB7

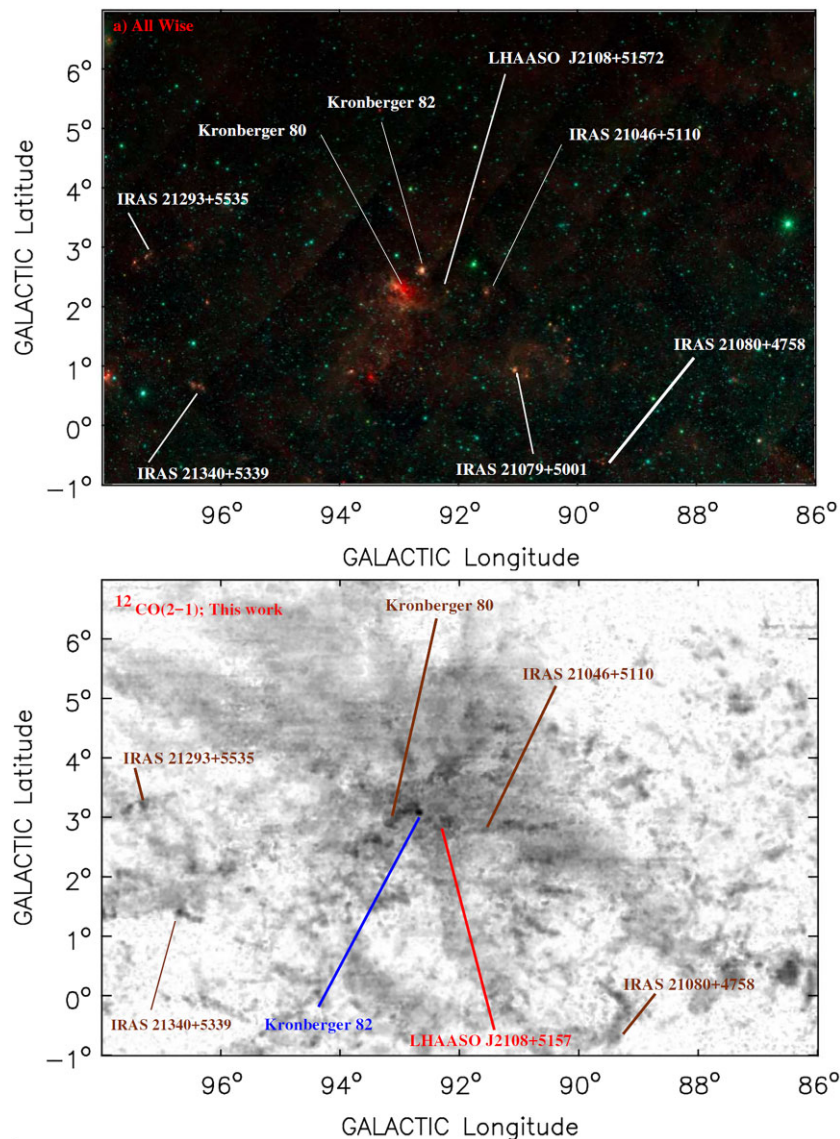
The Cygnus constellation contains several prominent H II regions, OB associations, and massive star clusters. Particularly, the Cygnus OB2 association is notable in the Galaxy because of the large number of massive stars, including Wolf–Rayets. Reipurth and Schneider (2008) presented an extinction map of the Cygnus molecular cloud complex, providing a complete overview of the star-forming regions and young star clusters in Cygnus showing (see their figure 1). Their map includes Cygnus-X, the North American Nebula, the Pelican Nebula, and COB7-MC, all of them lying within a distance from the Sun ranging from 600 pc (North American and Pelican Nebula) to 1.7 kpc (Cygnus-X; Schneider et al. 2006). Considering a distance of 800 pc Humphreys (1978), Dobashi et al. (1994), and Dobashi, Bernard, and Fukui (1996) estimate a total mass of  $M \sim 1 \times 10^5 M_{\odot}$ .

The large-scale regions of COB7 were surveyed in the infrared by WISE and also partially by GLIMPSE 360 ( $3.6 \mu\text{m}$  and  $4.5 \mu\text{m}$ ). We show the the WISE RGB image ( $22 \mu\text{m} + 4.6 \mu\text{m} + 3.4 \mu\text{m}$ ) in figure 1 (top). Some regions, mainly associated with IRAS sources, are labelled for their easy identification. In the bottom panel of the same figure we also show an image of the  $^{12}\text{CO}$  ( $J = 2 \rightarrow 1$ ) emission obtained with the 1.85 m radio telescope at Osaka Prefecture University (OPU). These observations were presented by Nishimura et al. (2020); however, they did not perform any analysis of the observations. The morphology of the emission is compatible with the distribution of the emission in the low-resolution  $^{13}\text{CO}$  ( $J = 1 \rightarrow 0$ ) observations (angular resolution of  $\sim 3'$ ) performed with the two 4 m millimetre telescopes of the Nagoya Observatory (Dobashi et al. 1994, see also figure 1 of Dobashi et al. 2019). The  $^{12}\text{CO}$  ( $J = 2 \rightarrow 1$ ) map is the same one investigated and described in this work by adding the corresponding  $^{13}\text{CO}$  ( $J = 2 \rightarrow 1$ ) observations (see section 3).

### 2.2 LHAASO J2108+5157

J2108 is located at  $\alpha(\text{J2000.0}) = 21^{\text{h}}08^{\text{m}}52^{\text{s}}.8$ ;  $\delta(\text{J2000.0}) = +51^{\circ}57'00''$  or  $l = 92^{\circ}.30$ ;  $b = 2^{\circ}.84$ . The LHAASO observatory detected very high-energy gamma-ray emission in the energy ranges of 25 to 100 TeV and above 100 TeV at  $9.5\sigma$  and  $8.5\sigma$  respectively, with an angular resolution of  $\sim 0^{\circ}.3$  (Cao et al. 2021b). Therefore, it was postulated to be a PeVatron candidate (Cao et al. 2021b, 2021a). The





**Fig. 1.** Top: All WISE RGB ( $22\ \mu\text{m} + 4.6\ \mu\text{m} + 3.4\ \mu\text{m}$ ) image of COB7-MC centred at  $l = 93^\circ$  and  $b = +03^\circ$ . No clear counterpart is observed for J2108, although Kronberger 80, Kron 82, and IRAS 21046 are predominant in its neighbourhood. Bottom: The low-resolution total flux integrated  $^{12}\text{CO}(2\rightarrow 1)$  map (Nishimura et al. 2020) discussed in the text. The brightest point corresponds to Kron 82. No clear condensation is observed on the J2108 position, but the vicinity is surrounded by molecular gas. Some IRAS sources and objects related to star-forming and star clusters are labelled for identification.

observed morphology is circular with an upper limit on the source size of  $0:26$  with 95% confidence level covering a flux at 100 TeV of  $0.38 \pm 0.09\ \text{CU}$ .<sup>2</sup> A power-law spectrum with a spectral index of  $-2.83$  best describes the spectral energy distribution. The gamma-ray source has not been identified, no distance has been determined, and there is no known TeV counterpart. To date, neither HAWC (sensitive to a few hundred GeV to above 100 TeV; Albert et al. 2020b) nor the Tibet-AS $\gamma$  Observatory (sensitive to energy

above 100 TeV; Albert et al. 2020b) has reported emission at these energies.

The NASA-FERMI source 4FGL J2108.0+5155 at (J2000.0) RA =  $317:02$  and Dec =  $51:92$  has a separation of  $0:13$  from the sub-PeV emission observed by LHAASO being the only gamma source in the vicinity (Abdollahi et al. 2020). A symmetric Gaussian describes the morphology of the GeV emission with a width of  $0:48$  (Cao et al. 2021a). Assuming that the spectral energy distribution of the source extends to the VHE energies, extrapolating the spectrum to these energies leads to a flux lower by a factor of 10 than the one observed by LHAASO (Abdollahi et al. 2020; Cao et al. 2021a). The nearest X-ray source, an eclipsing

<sup>2</sup> CU = Crab Units = flux of the Crab nebula at 100 TeV =  $6.1 \times 10^{-17}\ \text{photons TeV}^{-1}\ \text{cm}^{-2}\ \text{s}^{-1}$ .

binary RX J2107.3+5202 (Motch et al. 1997), is separated by  $0^{\circ}.3$ .

According to LHAASO, the gamma-ray emission from J2108 can be described by leptonic and hadronic origins, although there are no known SNRs or PWNe within  $0^{\circ}.8$  of the centre of the sub-PeV emission. Even though there is no known pulsar in this region to support the leptonic scenario, the possible contribution of a yet unknown pulsar cannot be ignored. On the other hand, Cao et al. (2021a) suggest an association with the molecular cloud [MML2017]4607 (MML hereafter) with radius =  $0^{\circ}.24$ , mass =  $8469 M_{\odot}$ , and distance  $\sim 3.3$  kpc (3.28 kpc; Miville-Deschênes et al. 2017), favouring the hadronic emission. This result is based on the  $^{12}\text{CO} (J = 1 \rightarrow 0)$  survey of Dame, Hartmann and Thaddeus (2001), where the optical depth ( $\tau$ ) is optically thick and does not include emission from inner regions. In any case, although there is no consensus on the distance, it is worthwhile to make the same suggestion but considering optically thin observations, high-density tracers of clumps, and other distances to COB7-MC such as those reported by Humphreys (1978) and Schneider et al. (2006) from 800 pc to 1.7 kpc instead of 3.3 kpc.

A lepto-hadronic model in sub-PeV emission environments associated with giant molecular clouds without a strong pulsar or supernova remnant as in J2108 is described by Kar and Gupta (2022). This model assumes collisionally accelerated electrons and protons injected into the local interstellar medium from past supernova explosions thousands of years ago. This model can be tested by combining high-resolution H I (unavailable) with X-rays (leptonic emission), shocked H II gas tracers such as H $\alpha$ , forbidden lines (optical supernova remnants), and radio-continuum (RC) observations at 20 cm (synchrotron and pulsars) and 3.6 cm (bremsstrahlung). Successful examples of the discovery, confirmation, and study of supernova remnants interacting with molecular clouds include SN 1006, RX J1713.7–3946, 3C400.2, G350.0–2.0, IC 443, G352.7–0.1, and others (e.g., Sano et al. 2022; Fukui et al. 2012, 2021; Ergin et al. 2017; Karpova et al. 2016; Toledo-Roy et al. 2014; Jiang et al. 2010; Schreier et al. 2008; Albert et al. 2007; Ambrocio-Cruz et al. 2006, and references therein). Detecting a supernova (and its remnant) in J2108 is crucial for understanding the contribution of leptonic (and possibly hadronic) emission to the observed sub-PeV emission.

### 3 Observations

We report observations of COB7-MC carried out with the 1.85 m radio-telescope (Nishimura et al. 2020; Onishi et al. 2013) of the OPU at Nobeyama Radio Observatory. The observations were conducted from 2011 February to May.

A receiver for observation at 230 GHz was used to produce  $^{12}\text{CO} (J = 2 \rightarrow 1)$  and  $^{13}\text{CO} (J = 2 \rightarrow 1)$  maps with an angular resolution of  $\sim 3'$  covering a spectral window from  $-100$  to  $80 \text{ km s}^{-1}$  in the local standard of rest (LSR). The data were calibrated with the standard procedure used for previous data sets obtained with the same telescope (Onishi et al. 2013; Nishimura et al. 2015). The rms value of the noise is  $\sim 0.3 \text{ K}$  at a velocity resolution of  $0.3 \text{ km s}^{-1}$ .

We retrieve atomic hydrogen (H I) 21 cm line observations from the Dominion Radio Astrophysical Observatory (DRAO<sup>3</sup>) archives (Taylor et al. 2003), at a Galactic longitude and latitude that includes the position of J2108. These observations were taken on 2001 August 20 with a resolution of  $1'$  at 1420 MHz. The data set is projected into a  $1024 \times 1024$ ,  $18''$  pixel mosaic image, with  $0.82 \text{ km s}^{-1}$  velocity channels. The rms noise of the brightness temperature for an empty channel is between 2.1 and 3.2 K.

### 4 Methodology: The density of nucleons; $n(\text{H})$

Assuming that no external astronomical source such as the PeVatron is found in the region where the sub-PeV emission is observed, a molecular cloud or clump in a molecular environment, where the neutral pion decay process may occur, is a good candidate to produce this (hadronic) emission. In this scenario, the hadronic contribution ( $N_{\gamma}^{\text{had}}$ ) may be calculated from the observed total flux of gamma-ray emission:

$$N_{\gamma}^{\text{obs}} = N_{\gamma}^{\text{had}} + N_{\gamma}^{\text{lep}}, \quad (1)$$

as

$$N_{\gamma}^{\text{had}} = N_{\gamma}^{\text{obs}} - N_{\gamma}^{\text{lep}} \propto cn(\text{H})N_{\text{p}}(\text{CR}), \quad (2)$$

with

$$N_{\gamma}^{\text{lep}} \propto N_{\text{X-ray}}^{\text{obs}} \left[ \frac{N(\text{CMB})}{B^2} \right]. \quad (3)$$

In these equations,  $c$  is the speed of light in vacuum,  $N_{\gamma}$  is a differential flux  $dN/dE$  corresponding to total emission (hadronic and leptonic) expressed in units of  $\text{TeV}^{-1} \text{ cm}^{-2} \text{ s}^{-1}$ ,  $n(\text{H})$  is the numeric density of the nucleons (protons) involved in the hadronic emission ( $N_{\gamma}^{\text{had}}$ ),  $N_{\text{p}}(\text{CR})$  corresponds to cosmic ray counts (CR) in hadronic emission (e.g., Amenomori et al. 2021b; Ackermann et al. 2011),  $N_{\text{X-ray}}^{\text{obs}}$  is the observed X-ray count,  $N(\text{CMB})$  is the photon density from the cosmic microwave background, and  $B$  is the ISM magnetic field. The X-ray emission is required

<sup>3</sup> DRAO is part of the Canadian Galactic Plane Survey Project (CGPS) (<https://www.cadc-ccda.hia-ihp.nrc-cnrc.gc.ca/en/search/#resultTableTab>).

to calculate the leptonic contribution using the inverse Compton effect. Equation (2) is supported by standard models (Kelner et al. 2006) and has been used effectively for SNR RX J1713.7–3946 (Fukui et al. 2012, 2021). Observations of leptonic emission can constrain the value of  $N_{\gamma}^{\text{lep}}$  (e.g., X-rays; Fukui et al. 2021, and references therein), and  $n(\text{H})$  can be calculated from the total proton column density,  $N(\text{H})$ , obtained from CO and H I observations as

$$N(\text{H}) = 2N(\text{H}_2) + N(\text{H I}), \quad (4)$$

where  $N(\text{H}_2)$  is calculated from the CO column density,  $N(\text{CO})$ . To obtain a complete understanding of the protons in the ISM, the column density of H I,  $N(\text{H I})$ , must be included in this equation (see Fukui et al. 2012, 2021; Planck Collaboration 2011, and references therein). Then, in the standard way (see appendix 1),

$$N(\text{H}_2) = 5 \times 10^5 N(^{13}\text{CO}), \quad (5)$$

$$\left[ \frac{N(\text{H I})}{\text{cm}^{-2}} \right] = 1.823 \times 10^{18} \left( \frac{\int T_{\text{MB}}^{\text{H I}} dv}{\text{K km s}^{-1}} \right), \quad (6)$$

where  $N(^{13}\text{CO})$  is the  $^{13}\text{CO}$  column density (derived from  $J = 2 \rightarrow 1$  line), and  $T_{\text{MB}}^{\text{H I}}$  is the brightness temperature averaged over the main beam as a result of a Gaussian fit of the H I emission spectrum. Using the relationship between column and number density and assuming a constant number density of the cloud, we can estimate the number density as follows:

$$n(\text{H}) = l^{-1} N(\text{H}), \quad (7)$$

where  $l$  is the physical size of the region under consideration.

The latter requires a careful search for the molecular clump and the determination of a suitable size, mass and distance, because the calculation of these parameters is fundamental for determining the density of the nucleons. This computing is particularly hard for COB7 due to its complex morphology, since the size, morphology (mainly), and distance are significant sources of uncertainty.

## 5 Results and discussion

In figure 2 (top left) we present a close-up of the  $^{12}\text{CO}$  ( $J = 2 \rightarrow 1$ ) images from figure 1, but centred on J2108. The circles cover regions of interest (ROIs) with diameters of  $0^{\circ}.7$ ,  $1^{\circ}.5$ , and  $2^{\circ}.0$ , where all source candidates for PeVatron (Cao et al. 2021a) including IRAS 21046+5110 are located. Kron 82 and IRAS 21046 are marked 1 and 2, respectively, and are the closest star clusters to J2108. The WISE RGB image (red =  $22 \mu\text{m}$ , green =  $4.6 \mu\text{m}$ , blue =  $3.4 \mu\text{m}$ ) is shown as a one-degree square ( $\sim$  four times the upper limit

of LHAASO KM2A PSF for J2108 Cao et al. (2021a) inset in the upper right-hand panel. The Kron 82 emission stands out, and IRAS 21046 does not appear in the field. In the images from WISE, IRAS 21046 is fainter than Kron 82, its emission is not as spectacular, and it is further away from J2108 than Kron 82 [at a distance of  $\sim 0^{\circ}.7$  vs.  $\sim 0^{\circ}.4$ ; a reason to be discarded by Cao et al. (2021a)].

There are no precise molecular emissions and counterparts in the centre of J2108, particularly in the upper limits emission extension circles at the upper edge at GeV (NASA-FERMI) and sub-PeV (LHAASO) emissions—see figure 4 of Cao et al. (2021a), which includes observations from Dame et al. (2001). Kron 82 shows a 20 cm radio continuum (RC; Taylor et al. 2003) in agreement with the 20 cm RC emission from NVSS (Condon et al. 1998), but no CO emission is observed.

In contrast, Kron 82 is a bright source on the map in our OPU  $^{12,13}\text{CO}$  ( $J = 2 \rightarrow 1$ ) emission. Kron 82 is the closest optical/radio counterpart to J2108. If the Cygnus OB2 star cluster is the PeVatron in the Cygnus cocoon, it is worth investigating and confirming whether Kron 82 could be the counterpart of J2108. Therefore, we reinforce the idea that a molecular clump or Kron 82 is the gamma-ray emission candidate. Nevertheless, there is no extended X-ray evidence in the literature for stellar winds or similar processes in massive stars at several degrees.

In figure 2 (bottom left) we show a zoom of Kron 82 in an RGB image (NVSS in red, OPU  $^{12}\text{CO}$  ( $J = 2 \rightarrow 1$ ) in green, and Spitzer–IRAC at  $4.5 \mu\text{m}$  in blue). As an inset (bottom right), another RGB image (NVSS in red, WISE  $22 \mu\text{m}$  in green, and Spitzer–IRAC  $4.5 \mu\text{m}$  in blue) is shown. Kron 82 is the only object with NVSS emission in the vicinity of J2108 at least in several degrees.

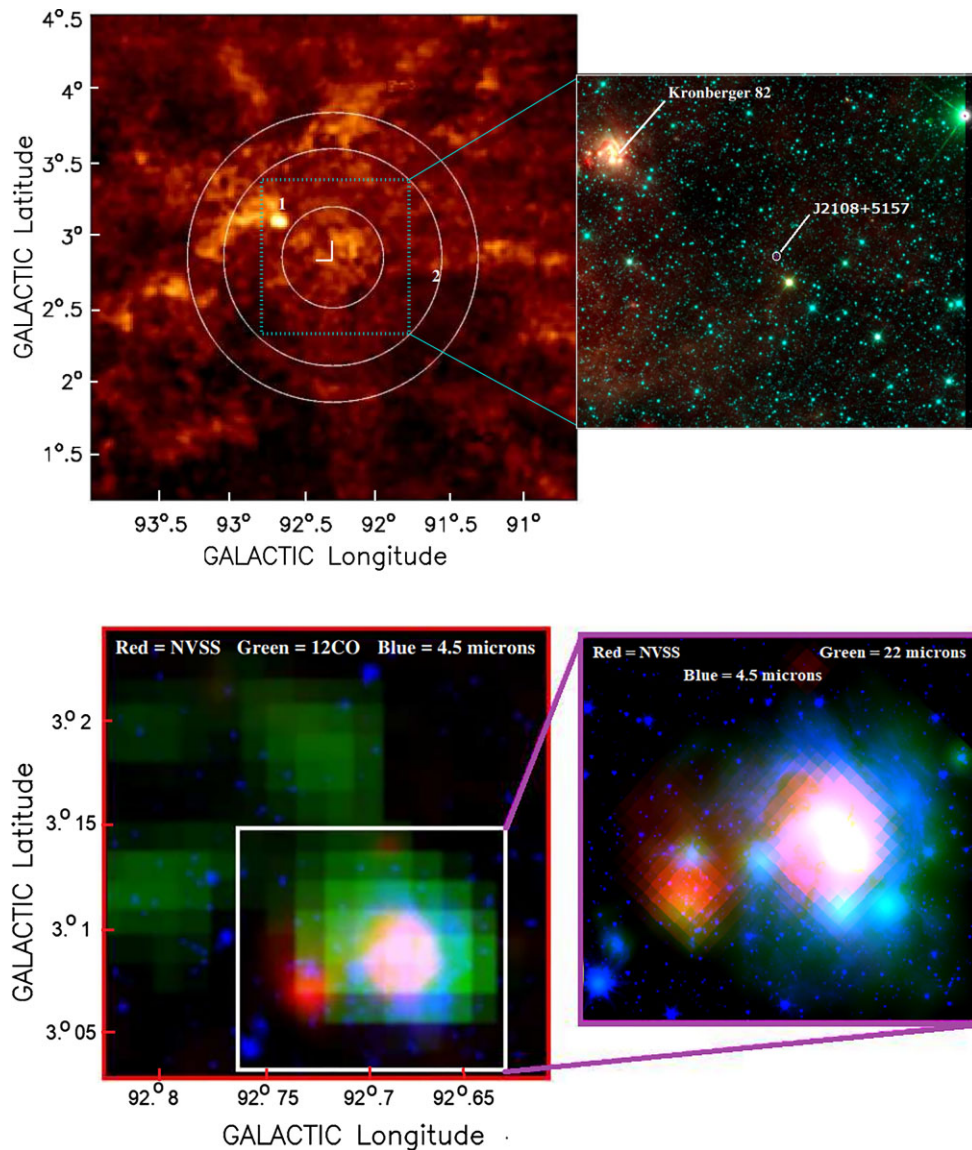
We present the OPU  $^{12,13}\text{CO}$  ( $J = 2 \rightarrow 1$ ) study and gamma-ray modelling for Kron 82 in appendix 2. This appendix shows that although Kron 82 requires a cosmic-ray energy (proton) of  $\sim 10^{45}$  erg to produce the reported LHAASO emission, it is located outside the radial angular extension of J2108. Thus, discarding Kronberger 80 (distance  $\sim 5$  kpc; Cao et al. 2021a), IRAS 21046 (distance  $\sim 600$  pc; Kumar et al. 2006) and Kron 82 (due to their stellar content, mass and angular separation from J2108; distance  $\sim 1.6$  kpc), a molecular cloud near J2108 could be the best option to produce the observed sub-PeV emission. However, this molecular cloud could not be MML (distance of  $\sim 3.3$  kpc), as stated in subsection 2.2.

### 5.1 Cygnus OB7 and the vicinity of LHAASO J2108+5157

#### 5.1.1 H I and CO emission

In figure 3, we show the integrated  $^{12}\text{CO}$  ( $J = 2 \rightarrow 1$ ) emission (in color) in the velocity range between  $-100$  and





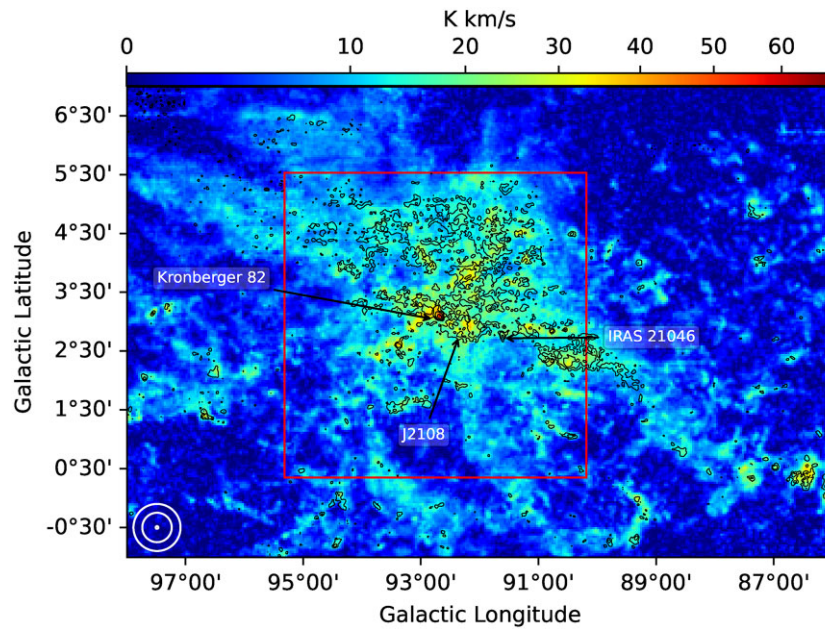
**Fig. 2.** Top: Same as figure 1, but in a 3 square degree field and centred in J2108 (marks:  $\alpha(J2000.0) = 21^{\text{h}}08^{\text{m}}36^{\text{s}}$ ;  $\delta(J2000.0) = +51^{\circ}57'00''$ ) for the  $^{12}\text{CO}(2\rightarrow 1)$  emission. The diameters of the circles are  $0.7$ ,  $1.5$ , and  $2^{\circ}$  respectively. The regions related to Kron 82 (peak) and IRAS 21046+5110 are labelled as 1 and 2, respectively. All WISE RGB image (red =  $22\ \mu\text{m}$ , green =  $4.6\ \mu\text{m}$ , and blue =  $3.4\ \mu\text{m}$ ) with a size of  $\sim 1^{\circ}$  is shown as an inset. The small circle shows the position of J2108. Bottom: A zoom of the zone labelled as 1 in the top left-hand panel (Kron 82). This RGB image is NVSS (RC at 20 cm in red), our  $^{12}\text{CO}(2\rightarrow 1)$  data (in green), and the Spitzer-IRAC  $4.5\ \mu\text{m}$  image (in blue). Another RGB image (red = NVSS; green = WISE  $22\ \mu\text{m}$ ; and blue = Spitzer-IRAC  $4.5\ \mu\text{m}$ ) is shown as an inset. Thus, Kron 82 is the more prominent object across wavelengths. There are no RC or IR emissions in the vicinity of the J2108 location.

$80\ \text{km s}^{-1}$ ) with the integrated  $^{13}\text{CO}(J = 2\rightarrow 1)$  emission (same velocity range) superimposed as black contours. The  $^{13}\text{CO}(J = 2\rightarrow 1)$  emission predominates in the north, especially in the NE, and is almost absent in the south, where the  $^{12}\text{CO}(J = 2\rightarrow 1)$  emission remains. The red square marks the region shown in figure 4, the only one with H I reported. In this figure we show the DRAO H I 21 cm map (left), an RGB image (center) with DRAO 21 cm in red,  $^{13}\text{CO}(J = 2\rightarrow 1)$  in green,  $^{12}\text{CO}(J = 2\rightarrow 1)$  in blue, and a H I 21 cm map integrated between  $-9$  and  $4\ \text{km s}^{-1}$  (corresponding to the brightest spectral component of the region; right),

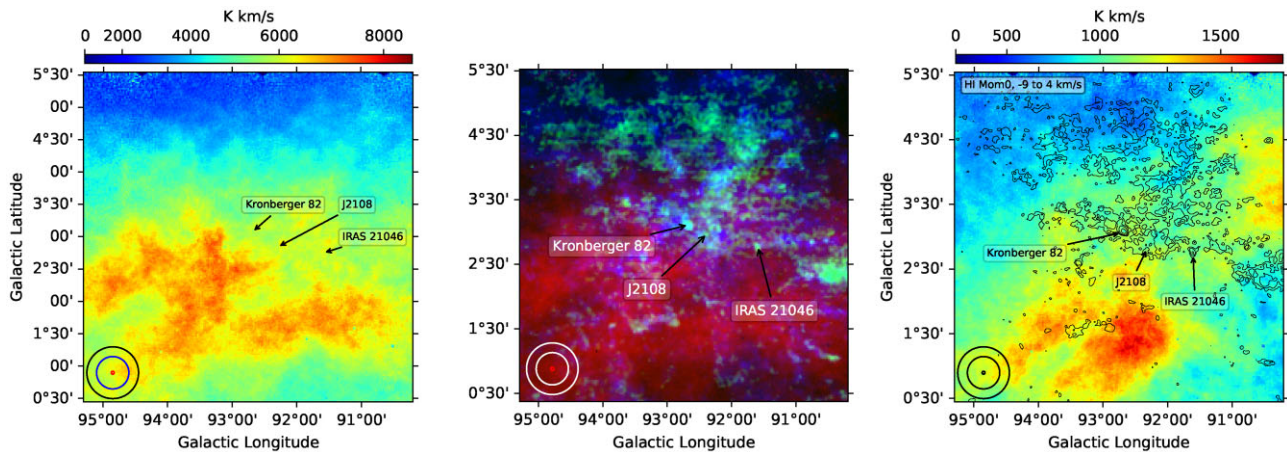
overlaid with the  $^{13}\text{CO}(J = 2\rightarrow 1)$  emission. The positions of J2108 (LHAASO) and Kron 82 are labelled. The extent of H I and CO gas is huge, but neither J2108 nor Kron82 have a clear clump or counterpart in H I. Remarkably, we observed a strong anti-correlation between the  $^{13}\text{CO}(J = 2\rightarrow 1)$  and the H I maps. Furthermore, the  $^{12}\text{CO}(J = 2\rightarrow 1)$  emission is more extended than the  $^{13}\text{CO}(J = 2\rightarrow 1)$ .

To identify molecular clouds near J2108, we show  $^{12,13}\text{CO}(J = 2\rightarrow 1)$  maps of Galactic latitude and longitude as a function of  $V_{\text{LSR}}$  in figure 5. We detect MML at  $V_{\text{LSR}} \sim -13\ \text{km s}^{-1}$  (yellow rectangle) and a gas parcel with





**Fig. 3.**  $^{12}\text{CO}$  ( $J = 2 \rightarrow 1$ ) map for COB7-MC (Nishimura et al. 2020) with the  $^{13}\text{CO}$  ( $J = 2 \rightarrow 1$ ) emission overlaid as black contours for different representative velocities ranges (this work). The positions of Kron 82, IRAS 21046, and J2108 are indicated with arrows. The square represents the field in figure 4 within which only H I emission was observed. The beams of LHAASO ( $0\text{:}8$  and  $0\text{:}5$ ) and OPU ( $2\text{:}7$ ) are shown as circles in the bottom left-hand corner.

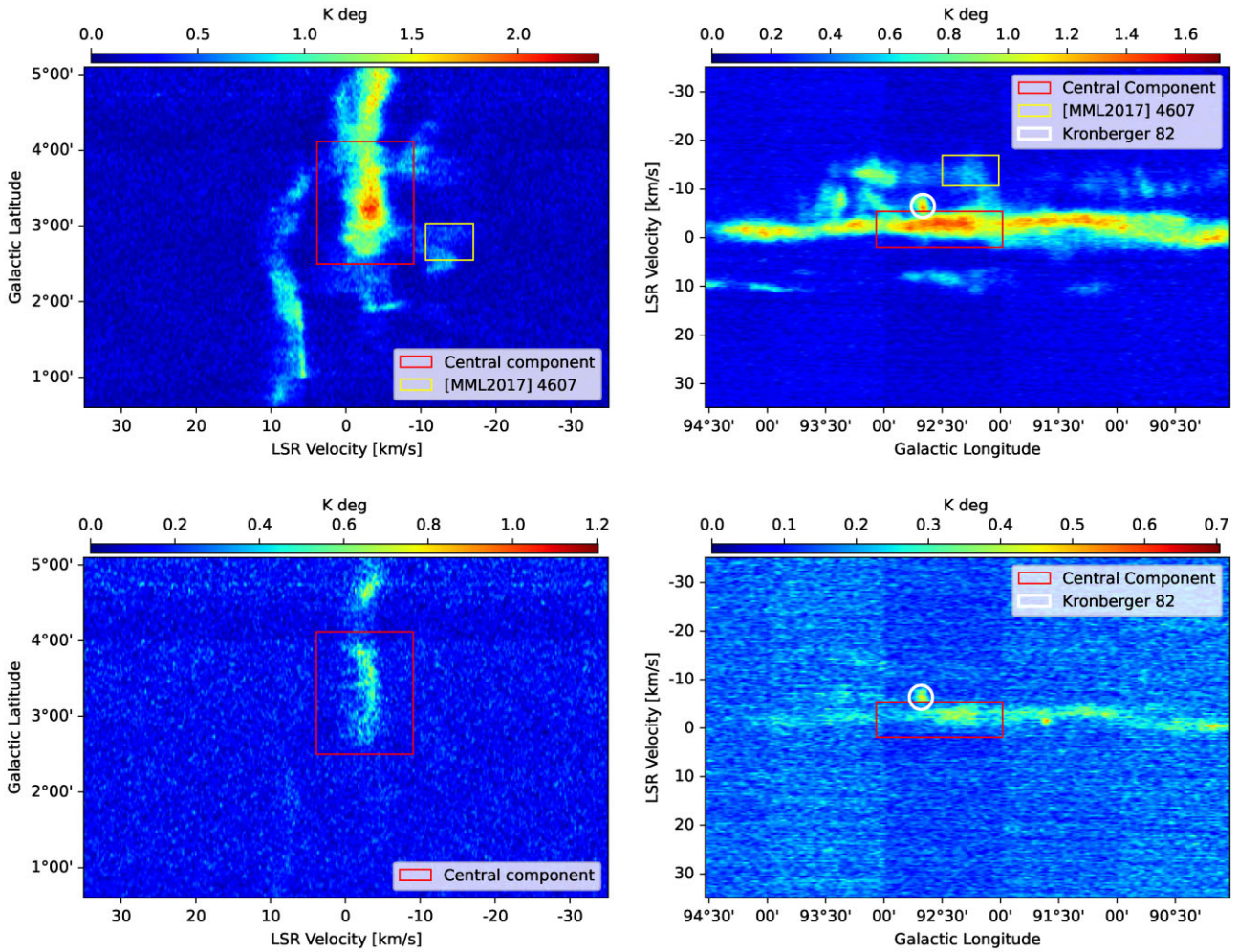


**Fig. 4.** Left: DRAO H I (21 cm) line image with J2108 at the center [ $\alpha(\text{J2000.0}) = 21^{\text{h}}08^{\text{m}}36^{\text{s}}; \delta(\text{J2000.0}) = +51^{\circ}57'00''$ ]. The image was generated considering an integration range between  $-150$  and  $50 \text{ km s}^{-1}$ . The H I image does not cover the whole CO field compared with figure 3. Center: RGB [red = DRAO 21 cm, green =  $^{13}\text{CO}$  ( $J = 2 \rightarrow 1$ ), blue =  $^{12}\text{CO}$  ( $J = 2 \rightarrow 1$ )] image from the same field at the left-hand panel. Right: H I (21 cm) line emission, integrated between  $-9$  and  $4 \text{ km s}^{-1}$  in the same field of view as the left-hand panel, with  $^{13}\text{CO}$  ( $J = 2 \rightarrow 1$ ) emission overlaid in contours (integrated between  $-100$  to  $80 \text{ km s}^{-1}$ ). The size of images is  $5^{\circ} \times 5^{\circ}$ . The  $y$ -axis and  $x$ -axis are Galactic latitude and longitude, respectively. The beams of LHAASO ( $0\text{:}8$  and  $0\text{:}5$ ) and OPU ( $2\text{:}7$ ) are shown in circles at the bottom left.

$V_{\text{LSR}} \sim -3 \text{ km s}^{-1}$ , called central component and enclosed with a red rectangle (see sub-subsection 5.1.2). We observe this cloud ([FKT-MC]2022 below) at  $^{13}\text{CO}$  ( $J = 2 \rightarrow 1$ ) (optically thin emission), unlike MML. Therefore, [FKT-MC]2022 and MML are molecular clouds near J2108, but [FKT-MC]2022 is detected by its optically thin emission.

We can see in figure 5 the  $^{12}\text{CO}$  ( $J = 2 \rightarrow 1$ ) emission associated with Kron 82 at  $V_{\text{LSR}} \sim -6 \text{ km s}^{-1}$  (white circle). To exclude this contribution, we integrate between  $-5$  and

$0 \text{ km s}^{-1}$  and present a  $^{12}\text{CO}$  ( $J = 2 \rightarrow 1$ ) moment-0 map in the top central panel of figure 6. We identify [FKT-MC]2022 in the central region of the map by fitting a 2-dimensional Gaussian. We estimate a central position of  $l = 92\text{:}4$  and  $b = 3\text{:}2$  with corresponding standard deviations  $\sigma_l = 0\text{:}50$  and  $\sigma_b = 0\text{:}45$  with a P.A. =  $19^{\circ}$ . Using these fitted values, we estimate the angular extent of the cloud at FWHM from the central position, shown as a red ellipse in figure 6. Finally, if we consider a beam of  $2\text{:}7 \times 2\text{:}7$ ,



**Fig. 5.** Galactic longitude and latitude  $^{12}\text{CO}$  ( $J = 2 \rightarrow 1$ ) (top panels) and  $^{13}\text{CO}$  ( $J = 2 \rightarrow 1$ ) (bottom panels) emission maps as function of the  $V_{\text{LSR}}$  for J2108 vicinity. Data have been integrated into an interval of  $0.5$  around the centre location of LHAASO J2108+5157:  $l = 92.31$ , and  $b = 2.84$ . The molecular cloud in the red rectangle is [FKT-MC]2022 ( $V_{\text{LSR}} \sim -3 \text{ km s}^{-1}$ ), and the yellow rectangle covers MML ( $V_{\text{LSR}} \sim -13 \text{ km s}^{-1}$ ), which is not observed at  $^{13}\text{CO}$  ( $J = 2 \rightarrow 1$ ). The cloud just above the big rectangle in both right-hand panels is Kron 82 ( $V_{\text{LSR}} \sim -7 \text{ km s}^{-1}$ ), which was not considered in the [FKT-MC]2022 size calculation (see sub-subsection 5.1.2).

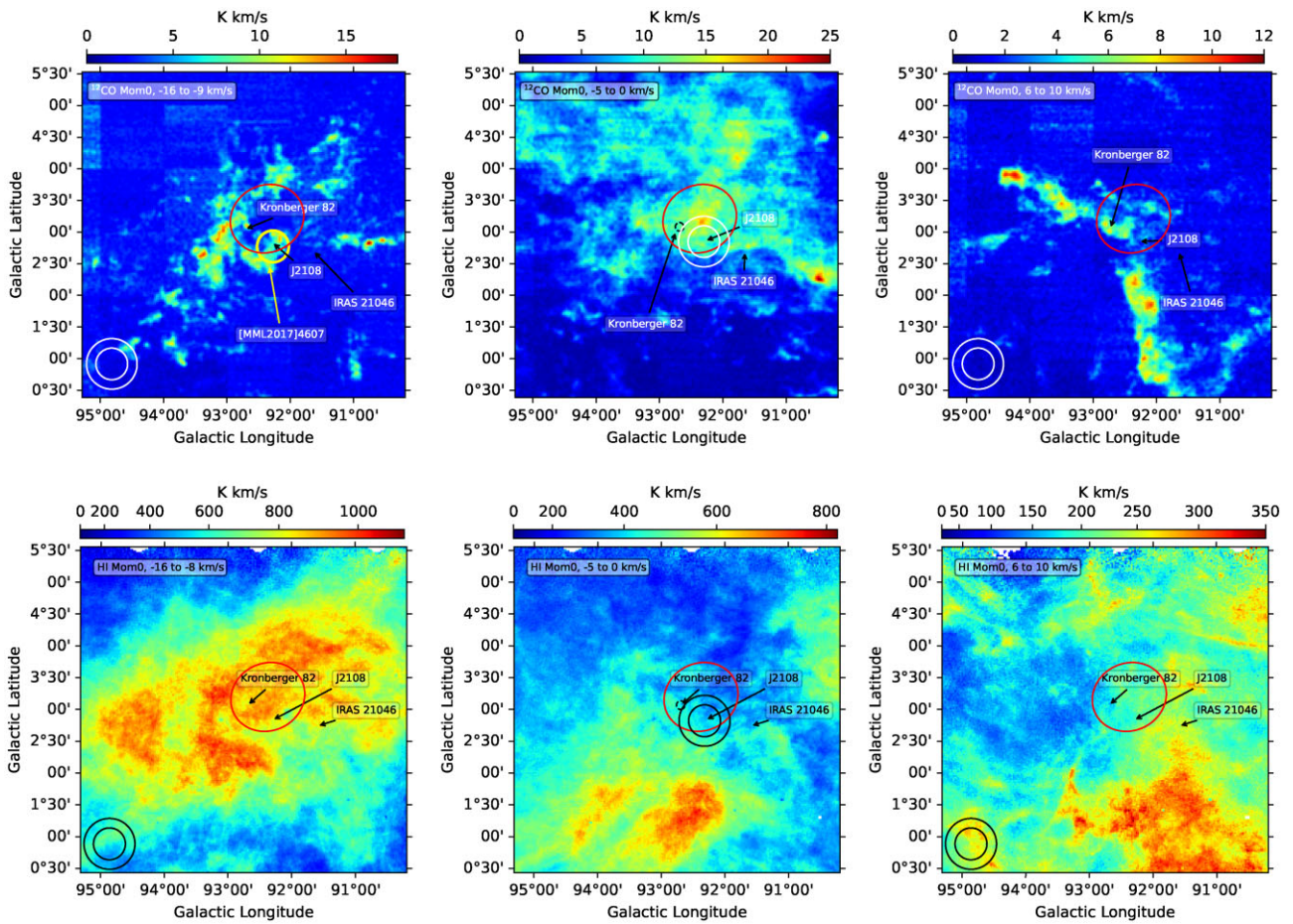
we obtain a deconvolved size of  $1.1 \pm 0.2$  (Nishimura et al. 2020).

In figure 6 we show moment 0 maps for  $^{12}\text{CO}$  ( $J = 2 \rightarrow 1$ ) and H I emissions for three different ranges of LSR velocity:  $-16$  to  $-9$ ,  $-5$  to  $0$ , and  $6$  to  $10 \text{ km s}^{-1}$ . The yellow circle in the top left-hand panel shows the vicinity of J2108 at  $0.5$  where MML is marked. The red ellipse covers [FKT-MC]2022 to its full extent (size of  $1.1$ ) in all panels. Except in the central panels, we show the two “beam sizes” of LHAASO at  $0.8$  and  $0.5$  in the bottom left, respectively. In the central panels, these “beams” appear centred in J2108. Comparing the position of [FKT-MC]2022 with the LHAASO beams and MML, [FKT-MC]2022 can also be considered a candidate for producing the sub-PeV emission.

We show in figure 7 the average spectra of the  $^{12,13}\text{CO}$  and H I line emissions obtained from the angular extension

of [FKT-MC]2022. The  $^{12}\text{CO}$  spectrum shows three main velocity components, denoted as left, centre (the brightest), and right (see table 1). We have performed a Gaussian fit for the three components. At  $V_{\text{LSR}} \approx -2.9$  to  $-3.0 \text{ km s}^{-1}$ , the central component is detected with a signal-to-noise ratio of  $\sim 15$ . This brightest component is the only one detected in the spectrum of  $^{13}\text{CO}$  with a signal-to-noise ratio of  $\sim 13$ . As a result, as shown in figure 6, the left- and right-hand components are  $^{12}\text{CO}$  gases with different velocities, respectively. The spectrum of H I has a complex structure and several velocity line components; a Gaussian curve with five components was fitted to this spectrum. The brightest line (main line) and the next one to the right cover the three lines observed in  $^{12}\text{CO}$  and the main line in  $^{13}\text{CO}$ . We can explain this behaviour by the fact that these two H I lines are one spectral line that suffers self-absorption (e.g., Jackson et al. 2002). All fitting parameters are shown in table 1.





**Fig. 6.** Maps of moment 0 for  $^{12}\text{CO}$  (top panels) and  $\text{H I}$  (bottom panels) emissions. The range of integration in LSR velocity corresponds to the FWHM for the three spectral components of  $^{12}\text{CO}$  emission shown in figure 7. Except for central panels, the beams of LHAASO ( $0^{\circ}.8$  and  $0^{\circ}.5$ ) are shown as circles at the bottom left. For the central panels, these beams are located at centre. The yellow circle (top-left) and red ellipse (all panels) correspond to the sizes of MML and [FKT-MC]2022 respectively. Both clouds are inside the resolution of LHAASO. An intersection zone is observed at the center of J2108. In figure 5, Kron 82 only shows emissions in the galactic longitude maps. Nevertheless, we remove the associated pixels (small black dashed circle in top central panel) in the computing of [FKT-MC]2022 size (see sub-subsection 5.1.2). Therefore, the FKT-MC]2022 size does not include Kron 82 emission.

After discovering [FKT-MC]2022 at  $V_{\text{LSR}} \sim -3 \text{ km s}^{-1}$ , and calculating its angular extension, we estimate its physical parameters, confirming through modeling the amount of energy required to produce the gamma-ray emission detected by LHAASO. Finally, both clouds, MML and [FKT-MC]2022, are compared to one another.

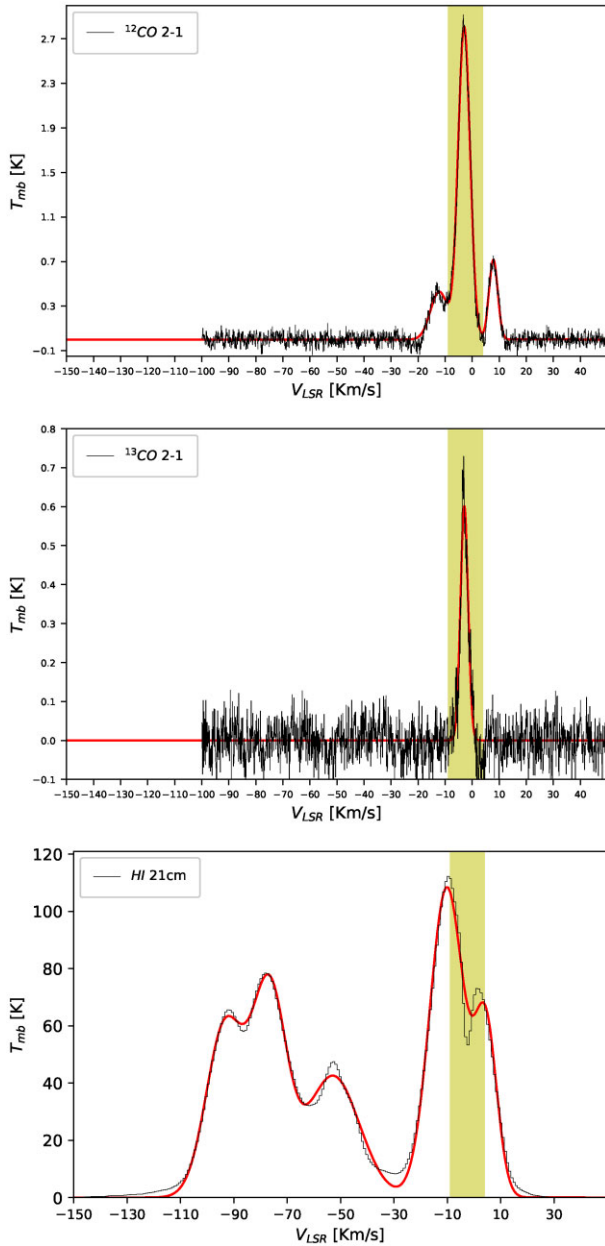
### 5.1.2 [FKT-MC]2022 physical parameters

In table 2 we present the relevant parameters of the  $^{12,13}\text{CO}$  and  $\text{H I}$  fitted spectra (see figure 7) used to estimate the physical parameters of [FKT-MC]2022. Based on a gas region of  $1:1$  size (red ellipse in figure 6), we examine only the central component of the  $^{12}\text{CO}$  ( $J = 2 \rightarrow 1$ ) spectrum and the single component fit for the  $^{13}\text{CO}$  ( $J = 2 \rightarrow 1$ ). In the case of the  $\text{H I}$  emission, we focus on the  $V_{\text{LSR}}$  range similar to the  $^{12,13}\text{CO}$  ( $J = 2 \rightarrow 1$ ) emission (between  $\sim -4$  and

$9 \text{ km s}^{-1}$ ), which corresponds to the velocity range considered only in the main-beam averaged brightness temperature (see figure 7).

We estimate  $T_{\text{ex}}$  from equation (A2) using the  $^{12}\text{CO}$  ( $J = 2 \rightarrow 1$ ) emission line, assuming it is optically thick. The result with a mean value of  $\approx 7.0 \text{ K}$  is shown in table 2. This value agrees with the lower value given by Schneider et al. (2006) for several clumps in Cygnus-X ( $7\text{--}28 \text{ K}$ ) and is similar to the temperature ( $10 \text{ K}$ ) given by Dobashi et al. (2014) for the core L1004E of the dark nebula LDN 1004 in the COB7-MC.

Considering the local thermodynamic equilibrium (LTE) conditions for the  $^{12,13}\text{CO}$  ( $J = 2 \rightarrow 1$ ) emission, assuming an optically thin emission for  $^{13}\text{CO}$ , and using the main-beam peak brightness temperature of the fitted spectra (see table 2), we calculate the optical depth  $\tau_{\text{CO}}^{13}$  from the  $^{13}\text{CO}$  emission according to equation (A3). Assuming a standard



**Fig. 7.** Total integrated spectra for the OPU  $^{12,13}\text{CO}$  ( $J=2\rightarrow 1$ ) and DRAO HI (21 cm) line observations. The spectra were obtained for the red region depicted in figure 6. The emission map for the different components is shown in figure 6 for CO and HI. The hatched areas fill the velocity range of the main component for  $^{12,13}\text{CO}$  ( $J=2\rightarrow 1$ ). This range covers part of the main (more intense) for the HI with part of the following right component (see text for details). The components to the left and right of the central line for  $^{12}\text{CO}$  ( $J=2\rightarrow 1$ ), correspond to CO-B7 molecular gas at different LSR velocities.

value for the isotopic abundance ratio of  $^{12}\text{CO}/^{13}\text{CO} \approx 60$  for the local interstellar medium (Langer & Penzias 1993), we estimate the optical depth of  $^{12}\text{CO}$  as  $\tau_{\text{CO}}^{12} = 60\tau_{\text{CO}}^{13}$ . The estimated optical depths  $\tau_{\text{CO}}^{13}$  and  $\tau_{\text{CO}}^{12}$  can be found in table 2.

We calculate the column densities of  $^{12,13}\text{CO}$  using equations (A5) and (A6) introducing the corresponding values

presented in table 2. The HI column density is determined using equation (6) assuming optically thin emission. We show the estimated column densities for all emissions in table 3. We obtain a mean value of  $N(^{13}\text{CO}) \approx 1.8 \times 10^{15} \text{ cm}^{-2}$ , similar to the lower values reported by Schneider et al. (2006) for Cygnus-X ( $0.6\text{--}6.9 \times 10^{16} \text{ cm}^{-2}$ ). The  $\text{H}_2$  column density is calculated from  $^{12,13}\text{CO}$  using equation (A7). The results are shown in table 3. Mean values of  $N(\text{H}_2) = 3.1 \times 10^{21}$  and  $9.1 \times 10^{20} \text{ cm}^{-2}$  are obtained from  $^{12}\text{CO}$  ( $J=2\rightarrow 1$ ) and  $^{13}\text{CO}$  ( $J=2\rightarrow 1$ ) emissions, respectively. These values agree in order of magnitude with those reported for Cygnus-X (Uyaniker et al. 2001). Finally, we estimate the total proton column density  $N(\text{H})$  using both  $^{12,13}\text{CO}$  ( $J=2\rightarrow 1$ ) emission (separately) and equation (4). The calculated values are shown in table 4. Nucleon column densities of  $N(\text{H}) = 3.7 \times 10^{21}$  or  $8.1 \times 10^{21} \text{ cm}^{-2}$  are obtained with  $^{12}\text{CO}$  ( $J=2\rightarrow 1$ ) or  $^{13}\text{CO}$  ( $J=2\rightarrow 1$ ) emission, respectively.

The distance of 3.3 kpc to an MML molecular cloud candidate (Cao et al. 2021a) was estimated using the rotation curve of Brand and Bilitz (1993) by Miville-Deschênes, Murray, and Lee (2017). For comparison, using the  $^{13}\text{CO}$  ( $J=2\rightarrow 1$ )  $V_{\text{LSR}}$  of  $-2.9 \text{ km s}^{-1}$ , we estimate a (far) kinematic distance of  $1.7_{-0.7}^{+0.5} \text{ kpc}$  to [FKT-MC]2022 using the same rotation curve. The latter implies a physical size of the cloud of  $33.4 \pm 11.5 \text{ pc}$  using a small angle approximation with an angular size of  $1^\circ.1$ . Substituting the size of the cloud into equation (7), we calculate the corresponding  $n(\text{H})$  via  $^{12,13}\text{CO}$  emission using both distances (3.3 and 1.7 kpc). We present the estimated  $n(\text{H})$  values in table 4 using both distances to MML and [FKT-MC]2022. Using  $^{13}\text{CO}$  ( $J=2\rightarrow 1$ ) and  $^{12}\text{CO}$  ( $J=2\rightarrow 1$ ) emissions we obtain nucleon number densities of  $n(\text{H}) \sim 37$  and  $\sim 80 \text{ cm}^{-3}$ , respectively. In addition, using the rotation curve of Reid et al. (2014), we estimate a kinematic distance of  $\sim 1.2 \pm 0.6 \text{ kpc}$ , and a nucleon density of  $\sim 52 \pm 28 \text{ cm}^{-3}$  (via  $^{13}\text{CO}$  emission), comparable within uncertainties to that using a distance of 1.7 kpc.

Finally, for [FKT-MC]2022, we estimated the average number density of molecular hydrogen  $n(\text{H}_2)$  for both  $^{12,13}\text{CO}$  emissions using equation (7) and the estimated column density of  $\text{H}_2$  in table 3. The total mass of the molecular gas  $M(\text{H}_2)$  is obtained as follows:

$$M(\text{H}_2) = \frac{4}{3}\pi(2\mu m_{\text{H}})R^3 n(\text{H}_2), \quad (8)$$

where  $m_{\text{H}} = 1.67 \times 10^{-24} \text{ g}$  is the mass of the hydrogen atom and a molecular weight  $\mu = 1.36$  (Miville-Deschênes et al. 2017; Takekoshi et al. 2019) is considered. We



**Table 1.** Fitted parameters of H I,  $^{12}\text{CO}$  ( $J = 2 \rightarrow 1$ ) and  $^{13}\text{CO}$  ( $J = 2 \rightarrow 1$ ) emission via Gaussian fit.\*

Spectral line	Size [ $^{\circ}$ ]	$V_{\text{LSR}}$ [km s $^{-1}$ ]	$\Delta V$ [km s $^{-1}$ ]	$T_{\text{MB}}^{\text{p}}$ [K]	$\int T_{\text{MB}} dv$ [K km s $^{-1}$ ]
$^{12}\text{CO}$ 2–1 (left)	$1.1 \pm 0.2$	$-12.19 \pm 0.08$	$7.55 \pm 0.19$	$0.43 \pm 0.01$	$3.45 \pm 0.10$
$^{12}\text{CO}$ 2–1 center (main)	$1.1 \pm 0.2$	$-2.98 \pm 0.01$	$5.21 \pm 0.02$	$2.80 \pm 0.01$	$15.54 \pm 0.08$
$^{12}\text{CO}$ 2–1 (right)	$1.1 \pm 0.2$	$7.84 \pm 0.03$	$3.78 \pm 0.06$	$0.72 \pm 0.01$	$2.88 \pm 0.06$
$^{13}\text{CO}$ 2–1 (main)	$1.0 \pm 0.2$	$-2.91 \pm 0.03$	$3.31 \pm 0.07$	$0.60 \pm 0.01$	$2.12 \pm 0.06$
H I (main)	$1.1 \pm 0.2$	$-10.18 \pm 0.11$	$15.01 \pm 0.25$	$108.46 \pm 0.90$	$1740.37 \pm 32.21$
H I (right to main)	$1.1 \pm 0.2$	$4.42 \pm 0.15$	$9.76 \pm 0.30$	$58.62 \pm 1.32$	$608.88 \pm 23.34$

\*The main beam (MB) averaged peak temperature ( $T_{\text{MB}}^{\text{p}}$ ) uncertainties are only due to rms noise. Velocity channel resolutions are used to show the LSR velocity ( $V_{\text{LSR}}$ ) and FWHM ( $\Delta V$ ) uncertainties.

**Table 2.** Values used for the column density analysis.

Species	Diameter [ $^{\circ}$ ]	$T_{\text{MB}}^{\text{peak}}$ [K]	$\int T_{\text{MB}} dV$ [K km s $^{-1}$ ]	$T_{\text{ex}}$ [K]	$\tau_{\text{CO}}^{12,13}$
H I	$1.1 \pm 0.2$	—	$1018.45 \pm 21.63$	—	—
$^{12}\text{CO}$ 2–1	$1.1 \pm 0.2$	$2.80 \pm 0.04$	$15.54 \pm 0.08$	$7.16 \pm 0.05$	$13.91 \pm 1.23$
$^{13}\text{CO}$ 2–1	$1.1 \pm 0.2$	$0.60 \pm 0.05$	$2.12 \pm 0.06$	$7.16 \pm 0.05$	$0.23 \pm 0.02$

**Table 3.** Estimated column density (N) of H I,  $^{12}\text{CO}$ ,  $^{13}\text{CO}$ , and H $_2$  for [FKT-MC]2022.\*

Diameter [ $^{\circ}$ ]	$N(^{13}\text{CO})$ [ $10^{15} \text{ cm}^{-2}$ ]	$N(^{12}\text{CO})$ [ $10^{17} \text{ cm}^{-2}$ ]	$N(\text{H I})$ [ $10^{21} \text{ cm}^{-2}$ ]	$N^{12}\text{CO}(\text{H}_2)$ [ $10^{21} \text{ cm}^{-2}$ ]	$N^{13}\text{CO}(\text{H}_2)$ [ $10^{20} \text{ cm}^{-2}$ ]
$1.1 \pm 0.2$	$1.8 \pm 0.1$	$1.7 \pm 0.2$	$1.9 \pm 0.4$	$3.1 \pm 0.9$	$9.1 \pm 2.7$

\*The 12 and 13 labels correspond to the respective CO emission used in the calculations.

**Table 4.** Estimated nucleon ( $\text{H} = 2\text{H}_2 + \text{H I}$ ) column ( $N$ ) and numeric ( $n$ ) densities of the molecular cloud [FKT-MC]2022 using distances of 1.7 kpc and 3.3 kpc.\*

Diameter [ $^{\circ}$ ]	$N^{12}(\text{H})$ [ $10^{21} \text{ cm}^{-2}$ ]	$N^{13}(\text{H})$ [ $10^{21} \text{ cm}^{-2}$ ]	$n^{12}(\text{H})_{(1.7 \text{ kpc})}$ [ $\text{cm}^{-3}$ ]	$n^{13}(\text{H})_{(1.7 \text{ kpc})}$ [ $\text{cm}^{-3}$ ]	$n^{12}(\text{H})_{(3.3 \text{ kpc})}$ [ $\text{cm}^{-3}$ ]	$n^{13}(\text{H})_{(3.3 \text{ kpc})}$ [ $\text{cm}^{-3}$ ]
$1.1 \pm 0.2$	$8.1 \pm 1.9$	$3.7 \pm 0.7$	$80 \pm 34$	$37 \pm 14$	$42 \pm 10$	$19 \pm 3$

\*The 12 and 13 labels correspond to the respective CO emission used in the calculations.

estimate the virial mass  $M_{\text{vir}}$  of the molecular cloud as (Garay & Lizano 1999)

$$M_{\text{vir}} = 210 \left( \frac{R}{\text{pc}} \right) \left[ \frac{(\Delta V)}{\text{km s}^{-1}} \right]^2, \quad (9)$$

where we use the FWHM velocity width  $\Delta V$  of the  $^{12,13}\text{CO}$  fitted spectra from table 2. The calculated H $_2$  number densities and masses are shown in table 5. Comparing this mass to the virial mass, it appears that [FKT-MC]2022 is close to virial equilibrium. The mean value of  $n(\text{H}_2) \sim 20 \text{ cm}^{-3}$  for both  $^{12,13}\text{CO}$  emissions is similar to the mean value of  $\sim 24 \text{ cm}^{-3}$  given in the  $^{12}\text{CO}$  ( $J = 1 \rightarrow 0$ ) catalogue of molecular clouds by Miville-Deschênes et al. (2017), including MML. For MML using equation (23) from these authors,  $n(\text{H}_2) = 12 \text{ cm}^{-3}$ ; (see table 5), which implies a density of nucleons (without H I) of  $n(\text{H}) = 2n(\text{H}_2) = 24 \text{ cm}^{-3}$ .

### 5.1.3 Modelling gamma rays

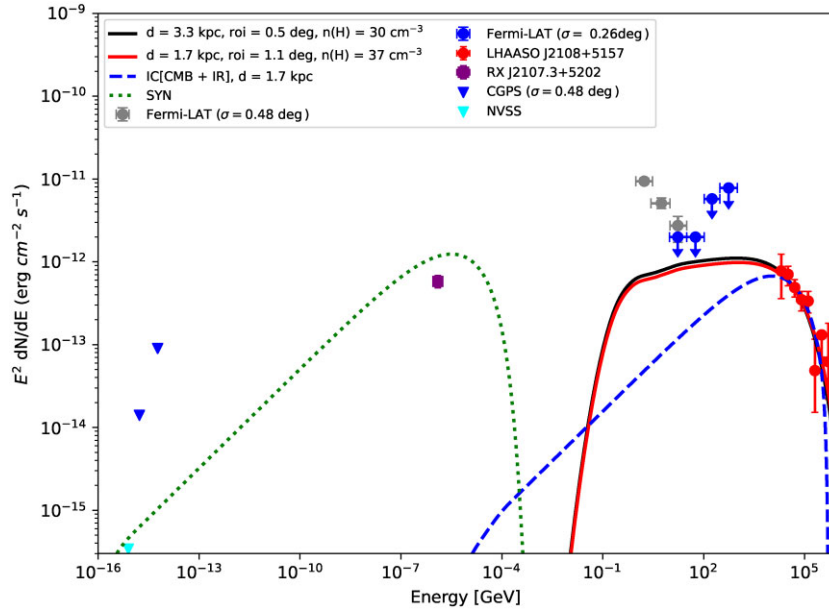
The first spectral energy distribution (SED) of J2108 was presented by Cao et al. (2021a). Nevertheless, this SED does not include RX J2107.3+5202 and the NVSS emission. In figure 8 we show this SED with these two emissions. The SED was calculated using the models of Zabalza (2016) in Naima software.<sup>4</sup> A similar complementary SED is presented by Kar and Gupta (2022). At high energies, it is complicated to distinguish between the leptonic and hadronic nature of the emission (see subsection 2.2 and Cao et al. 2021a), although the leptonic nature seems to be favoured at lower energies.

The hadronic and leptonic modeling considers a power-law spectrum with an exponential cutoff and fixed spectral

<sup>4</sup> (<https://naima.readthedocs.io/en/latest/index.html>).

**Table 5.** Parameters of the molecular cloud [FKT-MC] 2022 and comparison with [MML2017]4607.

Source	$V_{\text{LSR}}$ [km s $^{-1}$ ]	$D$ [ $^{\circ}$ ]	Distance [kpc]	$n(\text{H}_2)$ [cm $^{-3}$ ]	$M_{\text{vir}}(\text{H}_2)$ [ $10^4 M_{\odot}$ ]	$M(\text{H}_2)$ [ $10^4 M_{\odot}$ ]	$M(\text{H I} + \text{H}_2)$ [ $10^4 M_{\odot}$ ]	Projected size [ $^{\circ}$ ]
MML	-13.71	0.5	3.3	12.26	—	0.84	—	0.5 at 3.3 kpc
FKT-MC ( $^{12}\text{CO}$ )	$-3.0 \pm 0.1$	$1.1 \pm 0.2$	$1.7 \pm 0.6$	$31 \pm 14$	$9.5 \pm 0.1$	$3.0 \pm 1.4$	$3.6 \pm 1.6$	1.1 at 1.7 kpc
FKT-MC ( $^{13}\text{CO}$ )	$-2.9 \pm 0.1$	$1.1 \pm 0.2$	$1.7 \pm 0.6$	$9 \pm 4$	$3.8 \pm 0.2$	$0.9 \pm 0.4$	$1.5 \pm 0.6$	1.1 at 1.7 kpc



**Fig. 8.** Spectral energy distribution of the LHAASO J2108+5157 region. Red circles are from the LHAASO observatory (Cao et al. 2021a). The grey and blue circles are GeV fluxes and the upper limit reported by the Fermi-LAT observatory, respectively (Abdollahi et al. 2020, and references therein). The purple square is the ROSAT X-ray source RX J2107.3+5202 (Motch et al. 1997). The blue and cyan triangles are radio observations from CGPS survey (Taylor et al. 2003) and NVSS survey (Condon et al. 1998), respectively. The green dotted curve is the spectral energy distribution expected from synchrotron radiation. The blue dashed curve represents the expected spectral energy from the inverse Compton effect, considering a CMB and IR seed photon field (see text for details). The solid curves are the expected gamma-ray spectra for MML (black) and [FKT-MC]2022 (red), respectively. The SED parameters for hadronic models are shown in table 6.

indexes of 2.0 and 2.2, respectively. In the leptonic modeling we adopt an energy cutoff of 200 TeV and a magnetic field strength of  $3 \mu\text{G}$  (Cao et al. 2021a). For IC scattering, we include CMB and IR seed photon fields with temperatures of 2.72 and 20.0 K, and energy densities of 0.26 and  $0.3 \text{ eV cm}^{-3}$ , respectively (e.g., Hinton & Hofmann 2009; Vernetto & Lipari 2016). Considering a distance of 1.7 kpc, we obtain a total energy of electrons with energy above 1 GeV of  $2.2 \pm 0.4 \times 10^{46}$  erg. Nevertheless, no clear source for the leptonic emission nor extended X-ray emission in the vicinity (neither in the FOV nor in Kron 82) has been observed or reported.

Regarding this fact and the presence of two molecular clouds (MML and [FKT-MC]2022) as candidates for the generation of the sub-PeV emission, we favour the scenario of a hadronic origin: gamma rays generated by the decay of neutral pions due to the interaction between accelerated protons and molecular clouds. Here, the pion decay model

in Zabalza (2016) is based on Kelner et al. (2006) and Kamae et al. (2006) and implemented by Kafexhiu et al. (2014). We used a distance of 3.3 kpc for MML (Cao et al. 2021a) and 1.7 kpc for [FKT-MC]2022, considering ROIs of  $0.5$  and  $1^{\circ}$ , respectively. We use a nucleon number density of  $30 \text{ cm}^{-3}$  (estimated by Cao et al. 2021a) for MML and  $37 \text{ cm}^{-3}$  for [FKT-MC]2022, and calculate the total proton energy as follows:

$$\left(\frac{E_p}{\text{erg}}\right) = 9.0 \pm 3.0 \times 10^{47} \left[\frac{n(\text{H})}{30 \text{ cm}^{-3}}\right]^{-1} \left(\frac{D}{3.3 \text{ kpc}}\right)^2 \quad \text{for MML,} \quad (10)$$

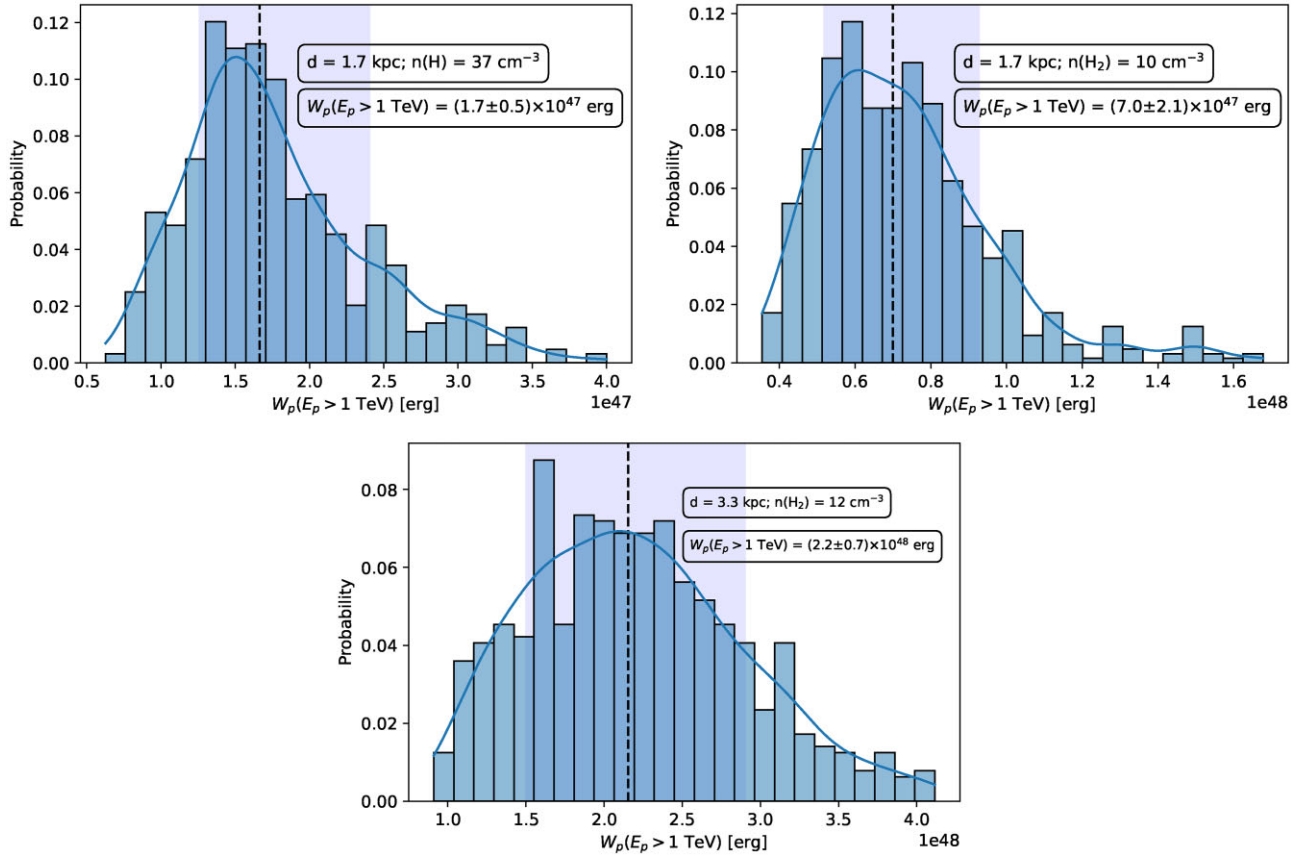
and

$$\left(\frac{E_p}{\text{erg}}\right) = 1.7 \pm 0.5 \times 10^{47} \left[\frac{n(\text{H})}{37 \text{ cm}^{-3}}\right]^{-1} \left(\frac{D}{1.7 \text{ kpc}}\right)^2 \quad \text{for [FKT-MC]2022.} \quad (11)$$

**Table 6.** Results of hadronic models of Naima, considering results for MML and [FKT-MC]2002.

	Distance [kpc]	$n(\text{H}_2)$ [ $\text{cm}^{-3}$ ]	$n(\text{H})$ [ $\text{cm}^{-3}$ ]	ROI [ $^\circ$ ]	$W_p$ [ $10^{47}$ erg]	Cutoff [TeV]	Molecular observation	Remark <sup>*</sup>
MML	3.3	—	30	0.5	$9^{+4}_{-2}$	$600^{+300}_{-300}$	$^{12}\text{CO}$ ( $J = 1 \rightarrow 0$ )	[1]
MML	3.3	12	—	0.5	$22 \pm 7$	$700^{+400}_{-300}$	$^{12}\text{CO}$ ( $J = 1 \rightarrow 0$ )	[2]
MML	3.3	—	24	0.5	$12 \pm 3$	$600^{+300}_{-200}$	$^{12}\text{CO}$ ( $J = 1 \rightarrow 0$ )	[3]
[FKT-MC] 2022	1.7	9	—	1.1	$7 \pm 2$	$700^{+400}_{-300}$	$^{13}\text{CO}$ ( $J = 2 \rightarrow 1$ )	
[FKT-MC] 2022	1.7	—	37	1.1	$1.7^{+0.7}_{-0.4}$	$700^{+400}_{-300}$	$^{13}\text{CO}$ ( $J = 2 \rightarrow 1$ )	

<sup>\*</sup>Remarks: [1]  $n(\text{H})$ ; Cao et al. (2021a). [2]  $n(\text{H}_2)$ ; Miville-Deschênes et al. (2017). [3]  $n(\text{H}) = 2n(\text{H}_2)$ .



**Fig. 9.** Computed hadronic model using Naima for [FKT-MC]2022, considering LHAASO parameters (Cao et al. 2021b), a distance of 1.7 kpc, and optically thin gas for (a) density of nucleons  $n(\text{H}) = 37 \text{ cm}^{-3}$  and (b)  $n(\text{H}_2) = 10 \text{ cm}^{-3}$  (this work). (c) Same for the [MML2017]4607 molecular cloud, but considering a distance of 3.3 kpc, and optically thick gas with  $n(\text{H}_2) = 12 \text{ cm}^{-3}$  from Miville-Deschênes et al. (2017).

In table 6, we show the results of several hadronic models (via neutral pion decay process) by using Naima software, considering different parameters for [FKT-MC]2022 and MML. In figure 9 we show the energy distribution of the proton population (with energy above 1 TeV) of three of the hadronic models: [FKT-MC]2022 with a proton density of  $37 \text{ cm}^{-3}$ , [FKT-MC]2022 with an optically thin  $\text{H}_2$  density of  $10 \text{ cm}^{-3}$ , and MML with an optically thick  $\text{H}_2$  density of  $12 \text{ cm}^{-3}$  (Miville-Deschênes et al. 2017). Comparing these energy distributions, the  $W_p$  ( $7 \pm 2 \times 10^{47}$  erg)

of [FKT-MC]2022 (optically thin gas with  $\text{H}_2$  density of  $10 \text{ cm}^{-3}$ ) is close to that for MML of  $2.2 \pm 0.7 \times 10^{48}$  erg (optically thick gas with  $\text{H}_2$  density =  $12 \text{ cm}^{-3}$ ). The latter is consistent with the  $W_p = 2.0 \times 10^{48}$  erg reported in Cao et al. (2021a), which was calculated using the Naima software with a distance of 3.3 kpc, and optically thick gas approximation with  $n(\text{H}) = 2n(\text{H}_2) = 30 \text{ cm}^{-3}$ .

On the other hand, for [FKT-MC]2022 at 100 TeV and assuming no leptonic contribution, we obtain a flux of  $E^2 dN/dE \sim 2 \times 10^{-13} \text{ erg cm}^{-2} \text{ s}^{-1}$  from the hadronic

contribution of figure 8. The latter corresponds to a differential flux of  $N_{\gamma}^{\text{had}} = 1.25 \times 10^{-17}$  photons  $\text{TeV}^{-1} \text{cm}^{-2} \text{s}^{-1}$ . This value corresponds to the  $N_p(\text{CR}) = 1.04 \times 10^{-29}$   $\text{TeV}^{-1}$  in equation (2).

[FKT-MC]2022 [see equation (11)] reproduces an observed differential flux of  $\sim 10^{-17}$  photons  $\text{TeV}^{-1} \text{cm}^{-2} \text{s}^{-1}$  (figure 8) assuming an optically thin nucleon density of  $n(\text{H}) = 37 \text{cm}^{-3}$ . This flux corresponds to an  $E_p$  of  $\sim 1.7 \times 10^{47}$  erg, which is slightly less than the required energy for MML ( $\sim 9.0 \times 10^{47}$  erg; optically thick gas). In addition, a lower required energy of  $E_p = 6.7 \pm 2.3 \times 10^{46}$  erg is obtained for [FKT-MC]2022 if a distance of 1.2 kpc (obtained with the rotation curve of Reid et al. 2014) and a nucleon density of  $52 \text{cm}^{-3}$  are considered. Finally, if we project the size of [FKT-MC]2022 to the distance of MML (3.3 kpc) or if we project MML to a distance of [FKT-MC]2022, the size of the clouds matches accordingly (see table 5).

The energies of both molecular clouds are much lower than the energy of a single SN ( $\sim 10^{51}$  erg). Therefore, an ancient unidentified SNR could be the PeVatron (e.g., Kar & Gupta 2022, and references therein). Ultimately, we favour the presence of a molecular cloud, MML or [FKT-MC]2022, as a place to produce the emission observed by LHAASO in J2108. High-resolution radio observations, including denser gas tracers, are needed to clarify the scenery.

## 6 Conclusions

We present low-resolution  $^{12,13}\text{CO}(2 \rightarrow 1)$  observations made with the 1.85 m radio-telescope at Osaka Prefecture University to detect a molecular counterpart to the PeVatron associated with LHAASO J2108+5157 in the OB7 molecular cloud at Cygnus. We discuss the methodology to obtain the observed flux of gamma-ray emission by determining an appropriate density of nucleons, including H I and H<sub>2</sub> (through CO observations) emissions:

- In addition to MML[2017]4607, we propose molecular cloud [FKT-MC]2022 as another candidate to produce the observed emission for LHAASO J2108+5157, favouring the hadronic emission because neither a source nor data support leptonic emission.
- [FKT-MC]2022 is situated at a distance of  $1.7 \pm 0.6$  kpc. It is  $\sim 1:1$  in size and has nucleon densities (H I + H<sub>2</sub>) of  $\sim 80$  and  $37 \text{cm}^{-3}$  for  $^{12}\text{CO}$  (optically thick) and  $^{13}\text{CO}$  (optically thin) emission, respectively. These values correspond to  $M(\text{H I} + \text{H}_2)$  of  $\sim 4 \times 10^4 M_{\odot}$  and  $2 \times 10^4 M_{\odot}$ , respectively. We computed a total required energy of protons of  $W_p \sim 1.7 \times 10^{47}$  erg to reproduce the gamma-ray emission observed by LHAASO.

- The  $^{12,13}\text{CO}(2 \rightarrow 1)$  observations of Kronberger 82 reveal a clump morphology with a  $V_{\text{LSR}} \sim 7 \text{km s}^{-1}$  and a size of  $0:1$ . For optically thin gas at a distance between 1.63 and 2.30 kpc, the  $n(\text{H I} + 2\text{H}_2)$  or  $n(\text{H})$  is between 1.7 and  $2.5 \times 10^3 \text{cm}^{-3}$  and  $M(\text{H I} + \text{H}_2)$  is between 0.4 and  $1.7 \times 10^3 M_{\odot}$ . These values are consistent with the optically thick gas and with other molecular observations, confirming Kronberger 82 as a star-forming region rich in molecular species.
- By modelling its hadronic gamma-ray emission, Kronberger 82 uses less energy ( $W_p \sim 2.6 - 7.0 \times 10^{45}$  erg) to produce the observed (sub)PeV gamma-ray emission in LHAASO J2108+5157 than [FKT-MC]2022 and MML[2017]4607. Nevertheless, due to its angular separation from J2108+5157, it is not a strong candidate to be the gamma-ray source.

## Conflict of interest

The authors state they have no conflicts of interest directly relevant to the content of this article.

## Acknowledgments

This work was (partially) supported by the Inter-University Research Program of Institute for Cosmic Ray Research (ICRR), the University of Tokyo. IT-J acknowledges support from Consejo Nacional de Ciencia y Tecnologia (CONACyT), Mexico; grant 754851. We are grateful for the computational resources and technical support offered by the Data Analysis and Supercomputing Center (CADS) through the Leo-Atrox supercomputer of the Universidad de Guadalajara. EdelaF thanks colegio departamental, departamento de Física, and respective authorities of the Centro Universitario de Ciencias Exactas e Ingenierías (CUCEI), Universidad de Guadalajara, for authorization and permissions to perform the academic studies. This research has made use of “Aladin sky atlas” developed at CDS, Strasbourg Observatory, France.

## Appendix 1 Determination of column densities and $n(\text{H})$

First, we compare the distribution of H I with the  $^{12,13}\text{CO}$  gas to reliably clarify the position of the associated molecular cloud. Then we obtain the spectra and calculate the physical parameters in a standard way.

Assuming optically thin emission, the column density ( $N$ ) using H I is computed as (Dickey & Lockman 1990)

$$\left[ \frac{N(\text{H I})}{\text{cm}^{-2}} \right] = 1.823 \times 10^{18} \left( \frac{\int T_{\text{MB}}^{\text{H I}} dv}{\text{K km s}^{-1}} \right), \quad (\text{A1})$$

where  $T_{\text{MB}}^{\text{H I}}$  is the averaged brightness temperature of the main beam (MB) resulting from a Gaussian fit of the spectrum of H I emission. Under LTE conditions and



assuming  $^{12}\text{CO}$  optically thick gas, the excitation temperature  $T_{\text{ex}}$  is

$$T_{\text{ex}} = \frac{T_0}{\ln \left\{ 1 + \frac{T_0}{T_{\text{MB}}^{12,p} + T_0 / [\exp(T_0/T_{\text{CMB}}) - 1]} \right\}}, \quad (\text{A2})$$

where  $T_{\text{MB}}^{12,p}$  is the main beam averaged peak temperature of the  $^{12}\text{CO}$  emission,  $T_{\text{CMB}} = 2.725$  K is the temperature of the cosmic microwave background (CMB), and  $T_0 = h\nu/k$  is the characteristic temperature of the  $^{12,13}\text{CO}$  ( $J = 2 \rightarrow 1$ ) at a rest frequency of  $\nu_{\text{CO}}^{12} = 230.538$  and  $\nu_{\text{CO}}^{13} = 220.398$  GHz, respectively. The optical depth  $\tau_{\text{CO}}^{13}$  of the  $^{13}\text{CO}$  gas is determined assuming an optically thin emission and using (Rohlfs & Wilson 2004):

$$\tau_{\text{CO}}^{13} = -\ln \left[ 1 - \frac{J_v^{12}(T_{\text{ex}}) - J_v^{12}(T_{\text{CMB}}) \frac{T_{\text{MB}}^{13,p}}{T_{\text{MB}}^{12,p}}}{J_v^{13}(T_{\text{ex}}) - J_v^{13}(T_{\text{CMB}}) \frac{T_{\text{MB}}^{13,p}}{T_{\text{MB}}^{12,p}}} \right], \quad (\text{A3})$$

where  $T_{\text{MB}}^{13,p}$  is the main beam averaged peak temperature of the  $^{13}\text{CO}$  emission, and

$$J_v(T) = \frac{h\nu/k}{e^{h\nu/kT} - 1}, \quad (\text{A4})$$

is the intensity in units of temperature related with the CMB and the excitation temperature for the  $^{12,13}\text{CO}$  ( $J = 2 \rightarrow 1$ ) emission.

From Scoville et al. (1986) and Palau et al. (2007) we derived an expression to calculate the column density of  $^{13}\text{CO}$  from a rotational transition  $J \rightarrow J - 1$  as

$$\left[ \frac{N(^{13}\text{CO})}{\text{cm}^{-2}} \right] = 4.70 \times 10^{13} \frac{T_{\text{ex}}}{J^2} \exp \left[ \frac{2.64 J(J+1)}{T_{\text{ex}}} \right] \times \frac{\tau_{\text{CO}}^{13}}{1 - e^{-\tau_{\text{CO}}^{13}}} \left[ \frac{\int T_{\text{MB}}^{13}(v) dv}{\text{K km s}^{-1}} \right], \quad (\text{A5})$$

where the integrated brightness temperature of the main beam for the  $^{13}\text{CO}$  emission,  $\int T_{\text{MB}}^{13}(v) dv$ , is obtained from the Gaussian fit for the respective velocity component of the  $^{13}\text{CO}$  spectrum. Taking a standard value for the isotopic abundance ratio of  $^{12}\text{CO}/^{13}\text{CO} \approx 60$  for the ISM (Langer & Penzias 1993), we estimate the optical depth of  $^{12}\text{CO}$  as  $\tau_{\text{CO}}^{12} = 60\tau_{\text{CO}}^{13}$ . Similarly, the column density of  $^{12}\text{CO}$  can then be calculated with (Palau et al. 2007):

$$\left[ \frac{N(^{12}\text{CO})}{\text{cm}^{-2}} \right] = 4.33 \times 10^{13} \frac{T_{\text{ex}}}{J^2} \exp \left[ \frac{2.77 J(J+1)}{T_{\text{ex}}} \right] \times \frac{\tau_{\text{CO}}^{12}}{1 - e^{-\tau_{\text{CO}}^{12}}} \left[ \frac{\int T_{\text{MB}}^{12}(v) dv}{\text{K km s}^{-1}} \right]. \quad (\text{A6})$$

where  $\int T_{\text{MB}}^{12}(v) dv$  is the integrated brightness temperature of the main beam for the  $^{12}\text{CO}$  emission. Using an abundance ratio of  $[\text{H}_2/^{13}\text{CO}] = 10^5$  (Dickman 1978; Pineda

et al. 2008), the column density of  $\text{H}_2$  (via the  $^{13}\text{CO}$  emission) can be estimated by

$$N(\text{H}_2) = 5 \times 10^5 N(^{13}\text{CO}). \quad (\text{A7})$$

Moreover, several studies (e.g., Bolatto et al. 2013) find a “ $^{12}\text{CO}$ -to- $\text{H}_2$ ” conversion factor with a Galactic mean of  $X_{\text{CO}} = 2.0 \times 10^{20} \text{ cm}^{-2} (\text{K km s}^{-1})^{-1}$  with 30% uncertainty within the Milky Way disk. Then, the  $\text{H}_2$  column density (via the  $^{12}\text{CO}$  emission) can be estimated as

$$N(\text{H}_2) = X_{\text{CO}} \int T_{\text{MB}}^{12}(v) dv. \quad (\text{A8})$$

Finally, the total proton column density  $N(\text{H})$  is calculated using equation (4).

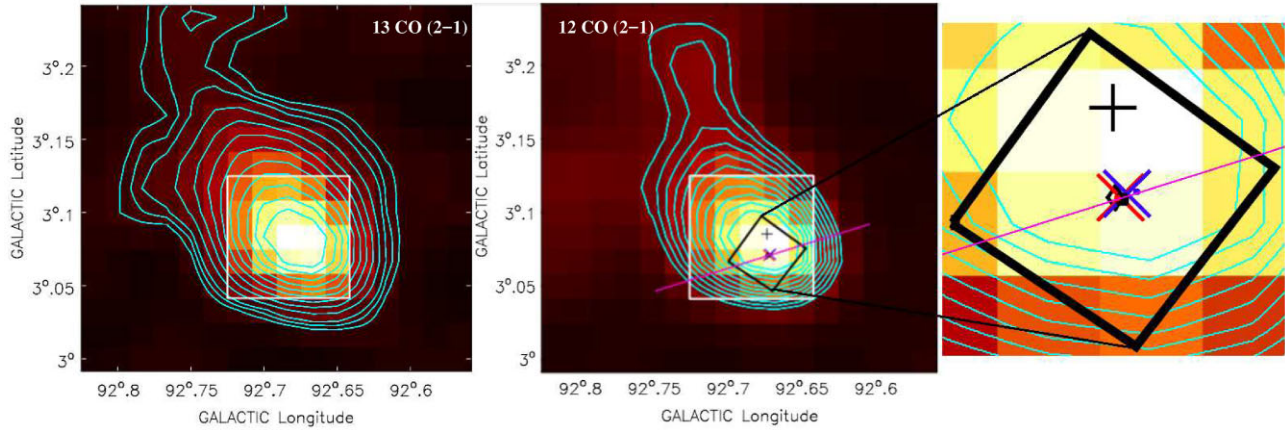
## Appendix 2 IRAS 21046+5110 and Kronberger 82

### A.2.1 IRAS 21046+5110

IRAS 21046 is a star-forming region with more than 200 massive protostellar candidates in 54 embedded clusters at a distance of  $\sim 600$  pc (Kumar et al. 2006). These authors present a complete and detailed NIR study confirming that the clusters and their properties have more to do with the formation process than with evolution. Considering its stellar content mass,  $M_{\text{stellar}}$ , of  $17 M_{\odot}$  (Kumar et al. 2006), the clear but fainter OPU  $^{13}\text{CO}$  ( $J = 2 \rightarrow 1$ ) emission compared to Kron 82 (integrated flux ratio  $\sim 0.3$ ; see figure 3), its farthest distance from J2021 compared to Kron 82 ( $\sim 0.7$  vs.  $\sim 0.4$ ), and the fact that its nature is not comparable to the Cygnus OB2, we do not support it as a producer of the sub-PeV emission observed by LHAASO. Furthermore, it was not considered in the inspection of Cao et al. (2021a).

### A.2.2 Kronberger 82

Kron 82 is a poorly studied star-forming region. A visual inspection of IR using 2MASS (images not shown), IRAC, WISE, and NVSS emission (see lower panels in figure 2) suggests that Kron 82 has the classic IR morphology observed in star-forming regions, including ultra-compact HII regions with extended emission and OB stars covered by arcminute-sized RC emission (e.g., de la Fuente et al. 2020a, 2020b; Churchwell et al. 2007, and references therein). The latter implies that ionised gas coexists with star clusters ( $2.12 \mu\text{m}$ ,  $3.6 \mu\text{m}$ ,  $4.5 \mu\text{m}$ , and RC at  $20 \text{ cm}$ ; in agreement with the corresponding WISE emission), with associated dust traced at WISE  $22 \mu\text{m}$  (no IRAC data at  $5.8$ ,  $8.0$ , or  $24 \mu\text{m}$ ). In this context, the remarkable HII region IRAS 21078+5211 (distance of  $\sim 1.6$  kpc;



**Fig. 10.** Same as the bottom left of figure 2, but for the OPU  $^{12,13}\text{CO} (J = 2 \rightarrow 1)$  emission of Kron 82 (colors and contours). The selected region of  $0:1$  that was used to extract the spectrum in figure 11 is shown as a square in the leftmost panel of the figure. In the middle panel, the rotated square, which indicates the direction of the equatorial coordinates, shows the region studied at higher angular-resolution by Moscadelli et al. (2021); see their figure 2. The peak position of the IRAM 30 m data is shown as a diamond mark right at the centre of the rotated square. In the same panel the cross corresponds to the tip of the protrusion of the emission observed their figure 2. The blue and red crosses marks indicate the position of the blue- and red-shifted, respectively, SO lobes originating from source 1 (see their figures 1 and 5). The magenta line shows the projection of these lobes when transferred to larger scales. The size of the beam is  $0:045 \times 0:045$ .

Moscadelli et al. 2021 and references therein), the star-forming region IRAS 21078+5209 (distance of  $\sim 1.5$  kpc; see Gieser et al. (2021) and references therein), and the star cluster DSH J2109.5+5223 (Kronberger et al. 2006) are located in the interior of the Kron 82 region. Nevertheless, a literature search for massive and WR stars in the vicinity, and a quick 2MASS photometry shows that Kron 82 resembles more IRAS 21046+5110 than Cygnus OB2: ruled by YSOs and no WR detected. A more detailed study of the stellar content in IR is needed to determine the nature of Kron 82 as a star cluster (formation dominated by YSOs like IRAS 21046, or evolution dominated like Cygnus OB2 with intense stellar winds).

In figure 10 we show the low-resolution  $^{12,13}\text{CO} (J = 2 \rightarrow 1)$  emission maps of the OPU around Kron 82 (cf. figure 1 bottom). The white square represents the region of  $\approx 0:1$  around the brightest emission where the spectra were extracted. The averaged spectra for  $^{12,13}\text{CO} (J = 2 \rightarrow 1)$  and H I emissions are shown in figure 11. The fitting parameters are shown in table 7. The black square, the crosses and the plus sign refer to objects studied by Moscadelli et al. (2021).

Spectra of  $^{12}\text{CO} (J = 2 \rightarrow 1)$  and  $^{13}\text{CO} (J = 2 \rightarrow 1)$  show the brightest principal component in a  $-13 \gtrsim V_{\text{LSR}} \gtrsim 3 \text{ km s}^{-1}$  range, centered at  $V_{\text{LSR}} \sim -6.6 \text{ km s}^{-1}$  (see table 7). This value agrees with the systemic velocity of  $\sim 6.1 \text{ km s}^{-1}$  reported by Moscadelli et al. (2021). Besides the main line in the  $^{12}\text{CO} (J = 2 \rightarrow 1)$  spectrum, we discover a weak wing component at  $\sim -2.2 \text{ km s}^{-1}$ . This component is probably related to the main velocity component of the CO gas in the COB7-MC region. On the other hand, the  $^{12}\text{CO} (J = 2 \rightarrow 1)$  spectrum shows another weak component at  $V_{\text{LSR}}$  of

$8.41 \text{ km s}^{-1}$  with an observed frequency of 230.5315 GHz and a signal-to-noise ratio  $\sim 6$ . We believe this line is related to CO molecular gas in COB7-MC, but high-resolution observations are needed to clarify its nature.

To estimate the physical parameters, we consider emission in the range  $V_{\text{LSR}} = -13$  to  $3 \text{ km s}^{-1}$  (see figure 11), which includes both the main and wing components of the  $^{12}\text{CO} (J = 2 \rightarrow 1)$  spectrum. The fitted parameters in this range are shown in table 8.

We follow the same methodology described in subsection 5.1.2 for the molecular cloud and use the peak brightness of the principal component to estimate the average excitation temperature using equation (A2) and the corresponding optical depth using equation (A3). We obtain an average of  $T_{\text{ex}} \sim 16 \text{ K}$  within this region. The optical depth  $\tau_{\text{CO}}^{12}$  is then estimated from  $\tau_{\text{CO}}^{13}$ . Next, the column densities of  $^{13}\text{CO}$  and  $^{12}\text{CO}$  are calculated using equations (A5) and (A6), respectively. The  $\text{H}_2$  column density is estimated using equations (5) and (A6). The results are shown in table 9. Finally, the number density of  $\text{H}_2$  and H ( $\text{H}_2 + \text{H I}$ ) is calculated using the distance to Kron 82  $\approx 1.63 \text{ kpc}$  (Moscadelli et al. 2021; Xu et al. 2013) and equation (7), which is shown in table 10. The physical parameters agree with those of Moscadelli et al. (2021).

On the other hand, using the rotation curve of Brand and Blitz (1993), we obtain a far kinematic distance of  $2.3 \pm 0.5 \text{ kpc}$ . The parameters calculated at this distance are also shown in table 10 for comparison with those calculated at 1.63 kpc. The estimated physical parameters are similar at both distances. Thus, in a distance range between 1.63 and 2.30 kpc, Kron 82 is a molecular clump with a size

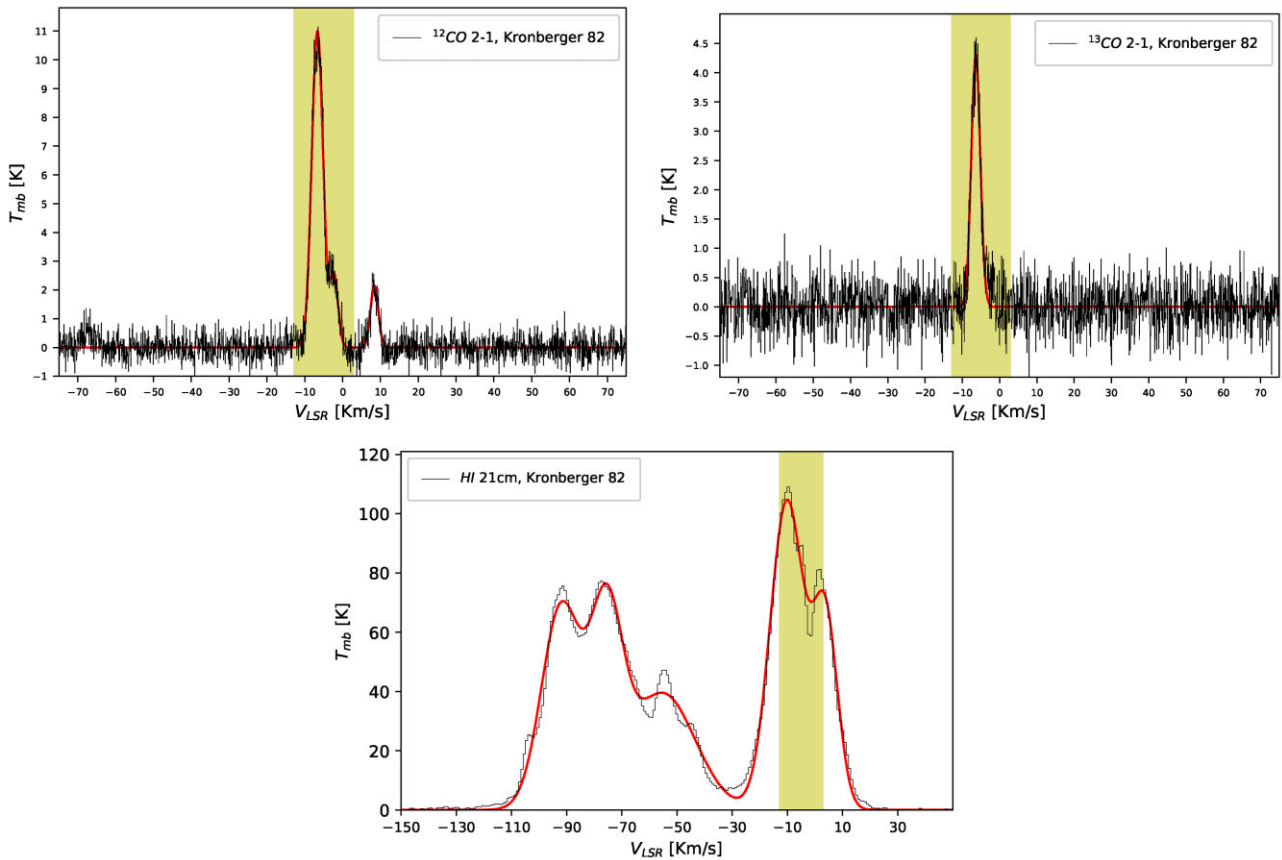


Fig. 11. Same as figure 7 but for Kronberger 82 (see figure 2). The weak component at  $\sim 7 \text{ km s}^{-1}$  corresponds to COB-7 gas in the vicinity.

**Table 7.** Parameters of the adjusted Gaussian fits of the emissions of  $^{12}\text{CO}$  ( $J = 2 \rightarrow 1$ ) and  $^{13}\text{CO}$  ( $J = 2 \rightarrow 1$ ) around Kron 82.\*

Line	Diameter [ $^{\circ}$ ]	$V_{\text{LSR}}$ [ $\text{km s}^{-1}$ ]	$\Delta V$ [ $\text{km s}^{-1}$ ]	$T_{\text{MB}}^{\text{peak}}$ [K]	$\int T_{\text{MB}} dV$ [ $\text{K km s}^{-1}$ ]
$^{12}\text{CO}$ 2-1 main	$0.10 \pm 0.01$	$-6.64 \pm 0.08$	$3.511 \pm 0.08$	$11.00 \pm 0.40$	$41.10 \pm 0.56$
$^{12}\text{CO}$ 2-1 wing	$0.10 \pm 0.01$	$-2.24 \pm 0.08$	$2.48 \pm 0.14$	$2.46 \pm 0.40$	$6.48 \pm 0.45$
$^{12}\text{CO}$ 2-1 weak	$0.10 \pm 0.01$	$8.41 \pm 0.08$	$2.44 \pm 0.13$	$2.16 \pm 0.40$	$5.60 \pm 0.40$
$^{13}\text{CO}$ 2-1	$0.10 \pm 0.01$	$-6.39 \pm 0.08$	$2.83 \pm 0.08$	$4.30 \pm 0.40$	$12.95 \pm 0.41$

\*The main beam (MB) averaged peak temperature ( $T_{\text{MB}}^{\text{peak}}$ ) uncertainties are only due to rms noise. Velocity channel resolutions are used to show the LSR velocity ( $V_{\text{LSR}}$ ) and FWHM ( $\Delta V$ ) uncertainties.

**Table 8.** Values used for the column density analysis (Kronberger 82).

Species	Diameter [ $^{\circ}$ ]	$T_{\text{MB}}^{\text{peak}}$ [K]	$\int T_{\text{MB}} dV$ [ $\text{K km s}^{-1}$ ]	$T_{\text{ex}}$ [K]	$\tau$
$^{12}\text{CO}$ 2-1 main + wing	$0.10 \pm 0.02$	$11.00 \pm 0.40$	$47.58 \pm 0.72$	$16.1 \pm 0.4$	$29.2 \pm 3.4$
$^{13}\text{CO}$ 2-1	$0.10 \pm 0.02$	$4.30 \pm 0.40$	$12.95 \pm 0.41$	$16.1 \pm 0.4$	$0.5 \pm 0.1$
H I	$0.10 \pm 0.02$	—	$1379.3 \pm 304.3$	—	—

of  $\sim 0.1$ ; a nucleon density ( $\text{H}_2 + \text{H I}$ ) of about  $10^3 \text{ cm}^{-3}$  and an  $M(\text{H}_2 + \text{H I})$  of  $10^3 M_{\odot}$ . The estimated  $\text{H}_2$  number densities,  $\text{H}_2$  total mass, and virial masses, are shown in table 11. We show the results for the computed hadronic model in figure 12 and table 12, taking into consideration these physical parameters and utilizing the same models

derived by Naima as stated in sub-subsection 5.1.3. We calculated proton energies of  $2.6 \times 10^{45}$  and  $7.0 \times 10^{45}$  erg for distances of 1.63 and 2.3 kpc, respectively.

Comparing these values to those of MML and [FKT-MC]2022 ( $9.0 \times 10^{47}$  erg and  $1.6 \times 10^{47}$  erg; see figure 9), Kron 82 requires significantly less cosmic-ray energy

**Table 9.** Estimated column ( $N$ ) and number ( $n$ ) densities of H I,  $^{12}\text{CO}$ ,  $^{13}\text{CO}$ , and  $\text{H}_2$  for Kronberger 82.\*

Diameter [ $^\circ$ ]	$N(^{13}\text{CO})$ [ $10^{15}\text{ cm}^{-2}$ ]	$N(^{12}\text{CO})$ [ $10^{17}\text{ cm}^{-2}$ ]	$N(\text{H I})$ [ $10^{21}\text{ cm}^{-2}$ ]	$N^{12}\text{CO}(\text{H}_2)$ [ $10^{21}\text{ cm}^{-2}$ ]	$N^{13}\text{CO}(\text{H}_2)$ [ $10^{21}\text{ cm}^{-2}$ ]	$n^{12}\text{CO}(\text{H}_2)$ [ $10^3\text{ cm}^{-3}$ ]	$n^{13}\text{CO}(\text{H}_2)$ [ $10^3\text{ cm}^{-3}$ ]
$0.10 \pm 0.01$	$8.3 \pm 0.3$	$6.8 \pm 0.8$	$2.5 \pm 0.5$	$9.5 \pm 2.8$	$4.1 \pm 1.2$	$1.1 \pm 0.3$	$0.5 \pm 0.1$

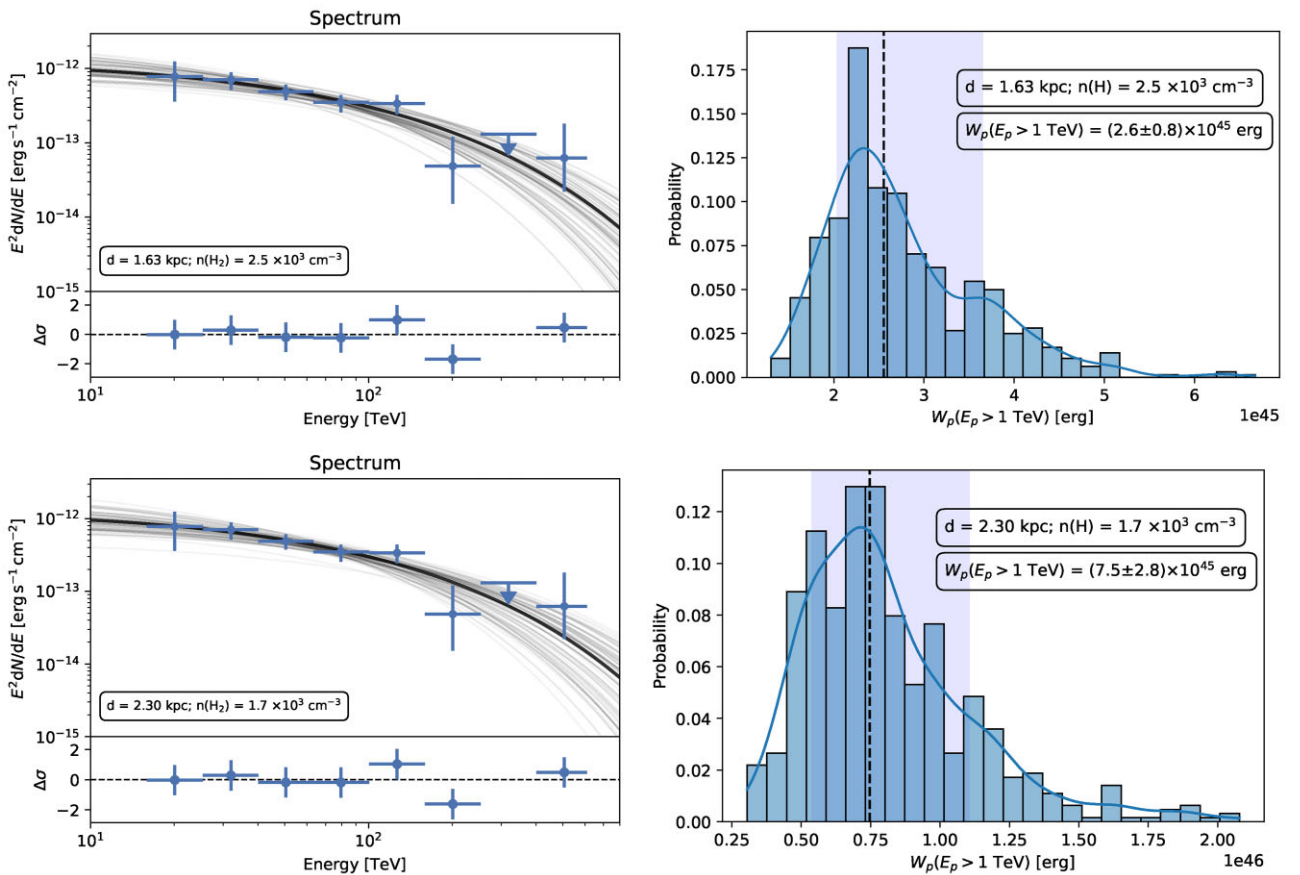
\*The 12 and 13 labels correspond to the respective CO emission used in the calculations.

**Table 10.** Column ( $N$ ) and number ( $n$ ) densities of nucleons for Kronberger 82.

Diameter [ $^\circ$ ]	Distance [kpc]	$N^{12}(\text{H})$ [ $10^{22}\text{ cm}^{-2}$ ]	$N^{13}(\text{H})$ [ $10^{22}\text{ cm}^{-2}$ ]	$n^{12}(\text{H})$ [ $10^3\text{ cm}^{-3}$ ]	$n^{13}(\text{H})$ [ $10^3\text{ cm}^{-3}$ ]
$0.10 \pm 0.01$	$1.63 \pm 0.05$	$1.1 \pm 0.3$	$2.2 \pm 0.6$	$2.5 \pm 0.7$	$1.2 \pm 0.3$
$0.10 \pm 0.01$	$2.30 \pm 0.50$	$1.1 \pm 0.3$	$2.2 \pm 0.6$	$1.7 \pm 0.6$	$0.9 \pm 0.3$

**Table 11.** Parameters of the molecular emission for Kronberger 82.

Source	$V_{\text{LSR}}$ [ $\text{km s}^{-1}$ ]	$D$ [ $^\circ$ ]	Distance [kpc]	$M_{\text{vir}}(\text{H}_2)$ [ $10^4 M_\odot$ ]	$M(\text{H}_2)$ [ $10^3 M_\odot$ ]	$M(\text{H I} + \text{H}_2)$ [ $10^3 M_\odot$ ]
Kronberger 82 ( $^{13}\text{CO}$ )	$-6.6 \pm 0.1$	$0.10 \pm 0.01$	$1.63 \pm 0.05$	$2.4 \pm 0.1$	$0.4 \pm 0.1$	$0.5 \pm 0.1$
Kronberger 82 ( $^{12}\text{CO}$ )	$-6.6 \pm 0.1$	$0.12 \pm 0.01$	$1.63 \pm 0.05$	$3.7 \pm 0.1$	$1.5 \pm 0.5$	$1.7 \pm 0.5$
Kronberger 82 ( $^{13}\text{CO}$ )	$-6.6 \pm 0.1$	$0.10 \pm 0.01$	$2.33 \pm 0.51$	$2.4 \pm 0.1$	$0.3 \pm 0.1$	$0.4 \pm 0.1$
Kronberger 82 ( $^{12}\text{CO}$ )	$-6.6 \pm 0.1$	$0.12 \pm 0.01$	$2.33 \pm 0.51$	$3.7 \pm 0.1$	$1.1 \pm 0.4$	$1.2 \pm 0.4$



**Fig. 12.** Same as figure 9, but for Kronberger 82. The hadronic model was calculated for the range of (a) 1.63 kpc and (b) 2.30 kpc. We use the respective nucleon density given in table 10 and a cutoff of 600 TeV (see table 12). The total proton energy of  $\sim 10^{45}$  erg required to reproduce the flux observed by LHAASO (points) is lower than those of [FKT-MC]2022 and MML ( $W_p \sim 10^{47}$  erg), so we cannot discard Kron 82 as a candidate for J2108 sub-PeV emission.



**Table 12.** Naima results for Kronberger 82.

	Distance [kpc]	n(H) [cm <sup>-3</sup> ]	ROI [ <sup>o</sup> ]	W <sub>p</sub> [10 <sup>45</sup> erg]	Cutoff [TeV]	Obtained from
Kron 82 2022	1.63	2.5 × 10 <sup>3</sup>	0.1	2.6 <sup>+1.1</sup> <sub>-0.5</sub>	600 ± 300	<sup>13</sup> CO ( <i>J</i> = 2 → 1)
Kron 82 2022	2.30	1.7 × 10 <sup>3</sup>	0.1	7.0 <sup>+4.0</sup> <sub>-2.0</sub>	600 <sup>+400</sup> <sub>-200</sub>	<sup>13</sup> CO ( <i>J</i> = 2 → 1)

(proton) to replicate the emission of J2108, regardless of whether it was caused by a supernova explosion or massive stellar winds. These energies are  $\sim 10^{51}$  erg for supernova explosions and  $\sim 10^{52}$  erg for stellar winds from star clusters similar to Cygnus OB2 (e.g., Lozinskaya et al. 2002, and references therein). Even if Kron 82 appears to have a stellar component more similar to IRAS 21046+5110 than Cygnus OB2, it is possible for molecular gas to produce the LHAASO-measured energy for J2108. Nonetheless, due to its 0.4 $\hat{A}$  radius separation from J2108, outside its (sub-PeV emission) upper limit radial extension ( $\sim 0.35$ ; Cao et al. 2021a), this scenerio is not favorable.

## References

- Abeysekara, A. U., et al. 2020, *Phys. Rev. Lett.*, 124, 021102
- Abeysekara, A. U., et al. 2021, *Nature Astron.*, 5, 465
- Abdollahi, S., et al. 2020, *ApJS*, 247, 33
- Ackermann, M., et al. 2011, *Science*, 334, 1103
- Aharonian, F., Yang, R., & de Oña Wilhelmi, E. 2019, *Nature Astron.*, 3, 561
- Albert, A., et al. 2020a, *ApJ*, 896, L29
- Albert, A., et al. 2020b, *ApJ*, 905, 1
- Albert, A., et al. 2021, *ApJ*, 911, 143
- Albert, J., et al. 2007, *ApJ*, 664, L87
- Ambrocio-Cruz, P., Rosado, M., & de La Fuente, E. 2006, *Rev. Mex. Astron. Astrofis.*, 42, 241
- Amenomori, M., et al. 2019, *Phys. Rev. Lett.*, 123, 051101
- Amenomori, M., et al. 2021a, *Nature Astron.*, 5, 460
- Amenomori, M., et al. 2021b, *Phys. Rev. Lett.*, 126, 141101
- Amenomori, M., et al. 2021c, *Phys. Rev. Lett.*, 127, 031102
- Bolatto, A. D., Wolfire, M., & Leroy, A. K. 2013, *ARA&A*, 51, 207
- Brand, J., & Blitz, L. 1993, *A&A*, 275, 67
- Cao, Z., et al. 2021a, *ApJ*, 919, L22
- Cao, Z., et al. 2021b, *Nature*, 594, 33
- Churchwell, E., et al. 2007, *ApJ*, 670, 428
- Condon, J. J., Cotton, W. D., Greisen, E. W., Yin, Q. F., Perley, R. A., Taylor, G. B., & Broderick, J. J. 1998, *AJ*, 115, 1693
- Dame, T. M., Hartmann, D., & Thaddeus, P. 2001, *ApJ*, 547, 792
- de la Fuente, E., et al. 2020b, *MNRAS*, 497, 4436
- de la Fuente, E., Porras, A., Trinidad, M. A., Kurtz, S. E., Kemp, S. N., Tafoya, D., Franco, J., & Rodríguez-Rico, C. 2020a, *MNRAS*, 492, 895
- Dickey, J. M., & Lockman, F. J. 1990, *ARA&A*, 28, 215
- Dickman, R. L. 1978, *ApJS*, 37, 407
- Dobashi, K., Bernard, J.-P., & Fukui, Y. 1996, *ApJ*, 466, 282
- Dobashi, K., Bernard, J.-P., Yonekura, Y., & Fukui, Y. 1994, *ApJS*, 95, 419
- Dobashi, K., Matsumoto, T., Shimoikura, T., Saito, H., Akisato, K., Ohashi, K., & Nakagomi, K. 2014, *ApJ*, 797, 58
- Dobashi, K., Shimoikura, T., Endo, N., Takagi, C., Nakamura, F., Shimajiri, Y., & Bernard, J.-P. 2019, *PASJ*, 71, S11
- Ergin, T., Sezer, A., Sano, H., Yamazaki, R., & Fukui, Y. 2017, *ApJ*, 842, 22
- Fukui, Y., et al. 2012, *ApJ*, 746, 82
- Fukui, Y., Sano, H., Yamane, Y., Hayakawa, T., Inoue, T., Tachihara, K., Rowell, G., & Einecke, S. 2021, *ApJ*, 915, 84
- Garay, G., & Lizano, S. 1999, *PASP*, 111, 1049
- Gieser, C., et al. 2021, *A&A*, 648, A66
- Humphreys, R. M. 1978, *ApJS*, 38, 309
- Hinton, J. A., & Hofmann, W. 2009, *ARA&A*, 47, 523
- Jackson, J. M., Bania, T. M., Simon, R., Kolpak, M., Clemens, D. P., & Heyer, M. 2002, *ApJ*, 566, L81
- Jiang, B., Chen, Y., Wang, J., Su, Y., Zhou, X., Safi-Harb, S., & DeLaney, T. 2010, *ApJ*, 712, 1147
- Kafexhiu, E., Aharonian, F., Taylor, A. M., & Vila, G. S. 2014, *Phys. Rev. D*, 90, 123014
- Kamae, T., Karlsson, N., Mizuno, T., Abe, T., & Koi, T. 2006, *ApJ*, 647, 692
- Kar, A., & Gupta, N. 2022, *ApJ*, 926, 110
- Karpova, A., Shternin, P., Zyuzin, D., Danilenko, A., & Shibanov, Y. 2016, *MNRAS*, 462, 3845
- Kelner, S. R., Aharonian, F. A., & Bugayov, V. V. 2006, *Phys. Rev. D*, 74, 034018
- Kronberger, M., et al. 2006, *A&A*, 447, 921
- Kumar, M. S. N., Keto, E., & Clerkin, E. 2006, *A&A*, 449, 1033
- Langer, W. D., & Penzias, A. A. 1993, *ApJ*, 408, 539
- Lozinskaya, T. A., Pravidkova, V. V., & Finoguenov, A. V. 2002, *Astron. Lett.*, 28, 223
- Miville-Deschênes, M.-A., Murray, N., & Lee, E. J. 2017, *ApJ*, 834, 57
- Motch, C., Guillout, P., Haberl, F., Pakull, M. W., Peitsch, W., & Reinsch, K. 1997, *A&AS*, 122, 201
- Moscadelli, L., et al. 2021, *A&A*, 647, A114
- Nishimura, A., et al. 2015, *ApJS*, 216, 18
- Nishimura, A., et al. 2020, *Proc. SPIE*, 11445, 114457F
- Palau, A., Estalella, R., Ho, P. T. P., Beuther, H., & Beltrán, M. T. 2007, *A&A*, 474, 911
- Pineda, J. E., Caselli, P., & Goodman, A. A. 2008, *ApJ*, 679, 481
- Onishi, T., et al. 2013, *PASJ*, 65, 78
- Planck Collaboration 2011, *A&A*, 536, A19
- Reid, M. J., et al. 2014, *ApJ*, 783, 130
- Reipurth, B., & Schnieder, N. 2008, in *Handbook of Star Forming Regions*, Vol. I, ed. B. Reipurth (San Francisco: ASP), 36
- Rohlfs, K., & Wilson, T. L. 2004, *Tools of Radioastronomy* (Berlin: Springer)
- Sano, H., et al. 2020, *ApJ*, 904, L24
- Sano, H., Yamaguchi, H., Aruga, M., Fukui, Y., Tachihara, K., Filipović, M. D., & Rowell, G. 2022, *ApJ*, 933, 157

- Schneider, N., Bontemps, S., Simon, R., Jakob, H., Motte, F., Miller, M., Kramer, C., & Stutzki, J. 2006, *A&A*, 458, 855
- Schneider, E. M., de La Fuente, E., & Velázquez, P. F. 2008, *MNRAS*, 371, 369
- Scoville, N. Z., Sargent, A. I., Sanders, D. B., Claussen, M. J., Masson, C. R., Lo, K. Y., & Phillips, T. G. 1986, *ApJ*, 303, 416
- Takekoshi, T., et al. 2019, *ApJ*, 883, 156
- Taylor, A. R., et al. 2003, *AJ*, 125, 3145
- Toledo-Roy, J. C., Velázquez, P. F., Esquivel, A., & Giacani, E. 2014, *MNRAS*, 437, 898
- Uyaniker, B., Fürst, E., Reich, W., Aschenbach, B., & Wielebinski, R. 2001, *A&A*, 371, 675
- Vernetto, S., & Lipari, P. 2016, *Phys. Rev. D*, 94, 063009
- Xu, Y., et al. 2013, *ApJ*, 769, 15
- Zabalza, V. 2015, *Proc. 34th International Cosmic Ray Conference, PoS (ICRC2015) (Trieste: SISSA)*, 922