

James Madison University

JMU Scholarly Commons

Libraries

Libraries

2-2018

James Madison University Special Collections

Kate Morris

James Madison University, morriskn@jmu.edu

Tiffany Cole

James Madison University, coletw@jmu.edu

Follow this and additional works at: <https://commons.lib.jmu.edu/letfspubs>



Part of the [Archival Science Commons](#), and the [Collection Development and Management Commons](#)

Recommended Citation

Morris, K. & Cole, T. (2018, January). James Madison University Special Collections. *The Virginia Genealogical Society Newsletter*, 44(1), 1, 3.

This Article is brought to you for free and open access by the Libraries at JMU Scholarly Commons. It has been accepted for inclusion in Libraries by an authorized administrator of JMU Scholarly Commons. For more information, please contact dc_admin@jmu.edu.



The Virginia Genealogical Society Newsletter

Founded 1960

ISSN 1084-5852

Vol. XLIV, No. 1

P.O. Box 626, Orange, Virginia 22960

January/February 2018

James Madison University Special Collections

by

Head of Special Collections, Kate Morris & Archivist Tiffany Cole

James Madison University

James Madison University Special Collections, located in the Carrier Library on JMU's campus in Harrisonburg Virginia, is home to over 200 manuscript collections, many containing materials and resources of use to genealogists. The mission of JMU Special Collections is to document the Central Shenandoah Valley, which includes the city of Harrisonburg, as well as Rockingham, Shenandoah, Page, and Augusta counties.

Several recent acquisitions are of particular note and of interest to genealogical researchers. **The Blackley Family Papers** (SC 0232) document the Blackley family of Staunton, Virginia, along with the related Scott, Bassett, Hoge, Matthews, and Nix families of Texas and Staunton. A significant portion of the collection is comprised of nineteenth century correspondence, and includes letters sent from American Civil War battlefields to family at home. A detailed finding aid to the collection is available at <http://www.lib.jmu.edu/special/manuscripts/SC0232Blackley.aspx>.

The Heatwole Family Papers (SC 0252) document the Heatwole family of Rockingham County. Corne-

lius Heatwole, (1868-1939) was one of the original founders of the State Normal and Industrial School for Women at Harrisonburg (now JMU). Among the photographs in this collection are images of the related Fawley and Trumbo families of Brocks Gap, Virginia, as well as images of this recognizable gap in the mountains in northwest Rockingham County. Most of the images are identified, or contain contextual information.

(continued on page 3)

In This Issue

James Madison University Special Collections.....	1
President's Message.....	2
Event Reminders.....	4
Library of Virginia Budget Report.....	5
Book Reviews.....	5
Virginia's Top 10 Endangered Artifacts.....	6
Connections to the Past.....	7
The Thoroughgood House and Education Center.....	8
Raleigh County Historical Society.....	10
Conferences and Institutes.....	11
Call for Papers and Presenters.....	12
New Resources.....	12
Webinars and Videos.....	13
Membership.....	13
Contributions.....	14
Queries.....	15

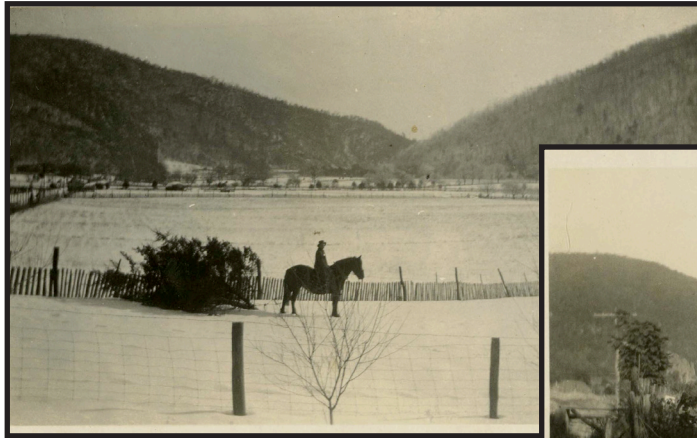


Member: Federation of Genealogical Societies
Member Organization: National Genealogical Society



(*JMU, continued from page 1*)

The Henkel Family Papers (1801-2008), newly acquired in November 2017, document the influential Henkel family of Rockingham and Shenandoah counties. The collection, chiefly documenting the Siram and Margaret



Photos courtesy of JMU Special Collections



Koener Henkel line of the family, is comprised primarily of correspondence written to Siram P. Henkel and includes letters from his sons Lewis and Luther during their service in the American Civil War. The collection also includes personal and financial papers of various Henkel family members including Siram's children and genealogical research materials, much of which was used to inform Mildred Renalds Wittig's *Henkel – Renalds Connection: with Ancestral Scripts and Collections* (2014).

A good starting point for researching JMU's special collections is a simple search from the main website at <http://www.lib.jmu.edu/special/>. For updates about new collections, see the New Finding Aids tab on the [Special Collections blog](#).

These highlights comprise just a small portion of the collections and resources available within JMU Special Collections. Along with the [Harrisonburg-Rockingham Historical Society](#) as well as the [Massanutten Regional Library](#), Harrisonburg has much to offer for genealogical researchers exploring their ancestors from the Shenandoah Valley.

Family	Marriage	Date	Year
Siram P. Henkel	was born	March 10 th	1817
Margaret Henkel	was born	March 5 th	1820
Louis Phillips	was born	Jan 17 th	1837
Samuel Augustine	was born	Jan 30 th	1840
Luther Melancthon	was born	Dec 17 th	1841
Rebecca Selbie	was born	Nov 26 th	1843
John Cooper	was born	Feb 9 th	1844
Martha Jane	was born	Nov 27 th	1845
Margaret Elizabeth	was born	May 20 th	1857
Henry Walter	was born	May 5 th	1858
Franklin Lee	was born	April 18 th	1853
Martha Kemper	was born	March 10 th	1857
Julia Annette	was born	Nov 10 th	1859
Henry Lee	was born	April 16 th	1863
Elizabeth Margaret	was born	Jan 15 th	1864
Margaret Pinkit	died	Feb 4 th	1859
Siram P. Henkel	died	16 th of Oct	1909
Martha Jane Henkel	died	June 5 th	1860
Henry Lee	died	March 24 th	1867
Samuel Augustine	died	June 16 th	1865
Franklin Lee	died	March 18 th	1871
Virginia C.	died	Aug 2 nd	1897
Louis P.	died	Jan 20 th	1904

James Madison University Special Collections

<http://www.lib.jmu.edu/special/>

special@jmu.edu
(540) 568-3612

Hours:
Monday-Friday
11:00 a.m.-4:00 p.m.
and by appointment