

University of Memphis

University of Memphis Digital Commons

Felon Population Reports

Department of Correction

2-1-2020

Tennessee Felon Population Update, February 2020

Tennessee. Department of Correction.

Follow this and additional works at: <https://digitalcommons.memphis.edu/govpubs-tn-department-correction-felon-population-reports>

Recommended Citation

Tennessee. Department of Correction., "Tennessee Felon Population Update, February 2020" (2020).
Felon Population Reports. 55.

<https://digitalcommons.memphis.edu/govpubs-tn-department-correction-felon-population-reports/55>

This Report is brought to you for free and open access by the Department of Correction at University of Memphis Digital Commons. It has been accepted for inclusion in Felon Population Reports by an authorized administrator of University of Memphis Digital Commons. For more information, please contact khggerty@memphis.edu.

Tennessee Felon Population Update

February 2020

Prepared By:

**Tennessee Department of Correction
Decision Support: Research & Planning**

TENNESSEE FELON POPULATION UPDATE
TABLE OF CONTENTS
February 2020

Incarcerated Felon Populations by Primary Offense As of January 31, 2020	1
Incarcerated Felon Population Projections vs. Actual Graph July 2017 to Present	2
Incarcerated Felon Population Projections vs. Actual Fiscal Years 2017/18 - 2019/20	3
Incarcerated Felon Populations Fiscal Years 2012/13 - 2019/20	4
Incarcerated Felon Populations Fiscal Years 2001/02 - 2018/19	5
Local Jail Populations by Category As of February 29, 2020	6
Felon Admissions in Tennessee Fiscal Year 2019/20	7
Felon Admissions in Tennessee Fiscal Year 2018/19	8
Felon Admissions in Tennessee Fiscal Years 2003/04 - 2018/19	9
Felon Inmate Releases in Tennessee Fiscal Year 2019/20	10
Felon Inmate Releases in Tennessee Fiscal Year 2018/19	11
Felon Inmate Releases in Tennessee Fiscal Years 2004/05 - 2018/19	12
Probation and Community Correction Populations Fiscal Years 2012/13 - 2019/20	13
Probation and Community Correction Populations and Averages Fiscal Years 2003/04 - 2018/19	14
Parole Grant Rates in Tennessee Fiscal Years 2009/10 - 2019/20	15
Parole Populations Fiscal Years 2012/13 - 2019/20	16
Parole Admissions / Releases Fiscal Years 2012/13 - 2019/20	17
Probation Admissions / Releases Fiscal Years 2015/16 - 2019/20	18
Community Correction Admissions/Releases Fiscal Years 2015/16 - 2019/20	19
User's Guide	20

The data used for this report was extracted by Strategic Technology Solutions (STS), a division within the Tennessee Department of Finance & Administration, from the Tennessee Offender Management Information System (TOMIS) and summarized by Decision Support: Research & Planning of the Tennessee Department of Correction.

**TDOC INCARCERATED POPULATIONS BY PRIMARY OFFENSE
as of January 31, 2019**

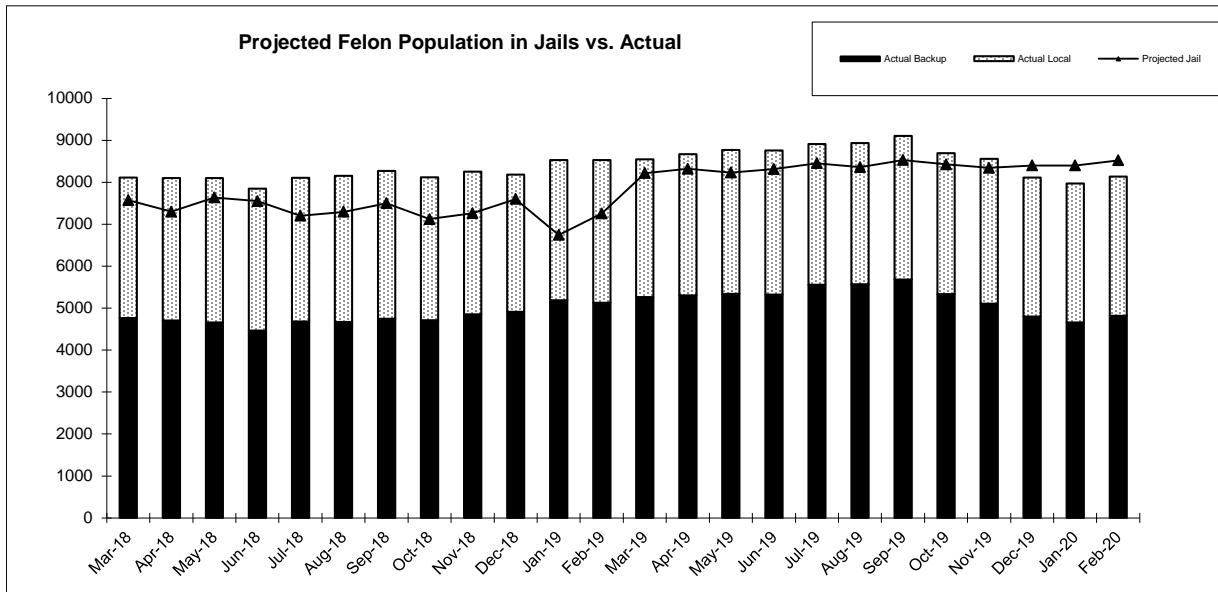
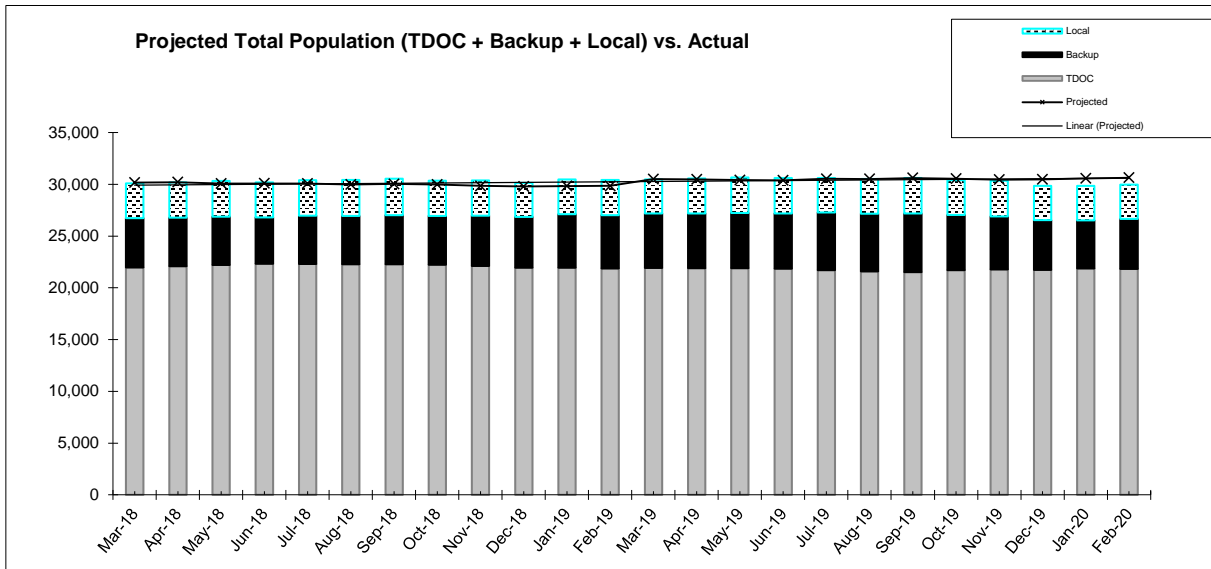
	TOTAL POP.	Monthly Change	Homicide	% OF TOTAL	Monthly Change	Kidnap	% OF TOTAL	Monthly Change	Sex Offender	% OF TOTAL	Monthly Change	Robbery	% OF TOTAL	Monthly Change	***Property	% OF TOTAL	Monthly Change	Assault	% OF TOTAL	Monthly Change	Drugs	% OF TOTAL	Monthly Change	Other	% OF TOTAL	Monthly Change
Averages																										
FY 07/08	19,258		3,629	18.8%		244	1.3%		2,801	14.5%		2,861	14.9%		3,128	16.2%		2,146	11.1%		3,004	15.6%		1,444	7.5%	
FY 08/09	19,304		3,689	19.1%		235	1.2%		2,781	14.4%		2,857	14.8%		2,998	15.5%		2,174	11.3%		3,079	16.0%		1,490	7.7%	
FY 09/10	19,900		3,759	18.9%		246	1.2%		2,869	14.4%		3,048	15.3%		2,988	15.0%		2,263	11.4%		3,196	16.1%		1,531	7.7%	
FY 10/11	20,114		3,806	18.9%		243	1.2%		2,896	14.4%		3,212	16.0%		2,877	14.3%		2,383	11.8%		3,187	15.8%		1,510	7.5%	
FY 11/12	20,061		3,877	19.3%		257	1.3%		2,840	14.2%		3,197	15.9%		2,674	13.3%		2,451	12.2%		3,267	16.3%		1,498	7.5%	
FY 12/13	20,066		3,931	19.6%		266	1.3%		2,819	14.0%		3,144	15.7%		2,627	13.1%		2,456	12.2%		3,309	16.5%		1,514	7.5%	
FY 13/14	20,897		3,996	19.1%		266	1.3%		2,837	13.6%		3,137	15.0%		2,902	13.9%		2,534	12.1%		3,563	17.1%		1,662	8.0%	
FY 14/15	20,802		3,980	19.1%		271	1.3%		2,830	13.6%		2,999	14.4%		2,887	13.9%		2,567	12.3%		3,547	17.1%		1,721	8.3%	
FY 15/16	20,215		3,949	19.5%		276	1.4%		2,766	13.7%		2,932	14.5%		2,676	13.2%		2,570	12.7%		3,337	16.5%		1,709	8.5%	
FY 16/17	21,681		3,963	18.3%		289	1.3%		2,853	13.0%		3,006	13.9%		3,057	14.1%		2,789	12.9%		3,809	17.6%		1,954	9.0%	
FY 17/18	22,060		3,965	18.0%		288	1.3%		2,834	12.8%		2,927	13.3%		3,142	14.2%		2,851	12.9%		4,008	18.2%		2,044	9.3%	
2018/2019																										
JUL	22,227	-0.22%	3,987	17.9%	0.2%	284	1.3%	0.0%	2,813	12.7%	-0.5%	2,865	12.9%	-0.7%	3,145	14.1%	-0.6%	2,912	13.1%	0.3%	4,119	18.5%	23.5%	2,102	9.5%	0.1%
AUG	22,217	-0.04%	3,994	18.0%	0.2%	285	1.3%	0.4%	2,807	12.6%	-0.2%	2,869	12.9%	0.2%	3,121	14.0%	-0.7%	2,919	13.1%	0.3%	4,130	18.6%	0.3%	2,092	9.4%	-0.4%
SEP	22,216	0.00%	4,000	18.0%	0.2%	285	1.3%	0.0%	2,810	12.6%	0.1%	2,874	12.9%	0.2%	3,105	14.0%	-0.5%	2,926	13.2%	0.2%	4,146	18.7%	0.4%	2,070	9.3%	-1.0%
OCT	22,185	-0.14%	4,000	18.0%	0.1%	287	1.3%	0.8%	2,797	12.6%	-0.3%	2,861	12.9%	-0.3%	3,080	13.9%	-0.7%	2,920	13.2%	-0.1%	4,158	18.7%	0.4%	2,082	9.4%	0.7%
NOV	22,059	-0.57%	3,998	18.1%	0.5%	284	1.3%	-0.5%	2,784	12.6%	0.1%	2,840	12.9%	-0.2%	3,052	13.8%	-0.3%	2,906	13.2%	0.1%	4,129	18.7%	-0.1%	2,066	9.4%	-0.2%
DEC	21,882	-0.80%	3,978	18.2%	0.3%	285	1.3%	1.2%	2,782	12.7%	0.7%	2,826	12.9%	0.3%	2,996	13.7%	-1.0%	2,874	13.1%	-0.3%	4,093	18.7%	-0.1%	2,048	9.4%	-0.1%
JAN	21,891	0.04%	3,980	18.2%	0.0%	286	1.3%	0.3%	2,783	12.7%	0.0%	2,811	12.8%	-0.6%	2,990	13.7%	-0.2%	2,867	13.1%	-0.3%	4,122	18.8%	0.7%	2,052	9.4%	0.2%
FEB	21,838	-0.24%	3,979	18.2%	0.2%	291	1.3%	2.0%	2,783	12.7%	0.2%	2,795	12.8%	-0.3%	2,970	13.6%	-0.4%	2,864	13.1%	0.1%	4,130	18.9%	0.4%	2,026	9.3%	-1.0%
MAR	21,871	0.15%	3,983	18.2%	-0.1%	291	1.3%	-0.2%	2,785	12.7%	-0.1%	2,770	12.7%	-1.0%	2,965	13.6%	-0.3%	2,862	13.1%	-0.2%	4,146	19.0%	0.2%	2,069	9.5%	2.0%
APR	21,835	-0.16%	3,987	18.3%	0.3%	294	1.3%	1.2%	2,788	12.8%	0.3%	2,753	12.6%	-0.4%	2,934	13.4%	-0.9%	2,874	13.2%	0.6%	4,134	18.9%	-0.1%	2,071	9.5%	0.3%
MAY	21,839	0.02%	3,978	18.2%	-0.2%	292	1.3%	-0.7%	2,797	12.8%	0.3%	2,739	12.5%	-0.5%	2,923	13.4%	-0.4%	2,879	13.2%	0.2%	4,143	19.0%	0.2%	2,088	9.6%	0.8%
JUN	21,806	-0.15%	3,970	18.2%	-0.1%	295	1.4%	1.2%	2,794	12.8%	0.0%	2,724	12.5%	-0.4%	2,909	13.3%	-0.3%	2,878	13.2%	0.1%	4,147	19.0%	0.2%	2,089	9.6%	0.2%
FY AVG	21,989	-0.2%	3,986	18.1%	0.1%	288	1.3%	0.5%	2,794	12.7%	0.1%	2,811	12.8%	-0.3%	3,016	13.7%	-0.5%	2,890	13.1%	0.1%	4,133	18.8%	2.2%	2,071	9.4%	0.1%
2019/2020																										
JUL	21,669	-0.63%	3,969	18.3%	0.0%	294	1.4%	-0.3%	2,811	13.0%	0.6%	2,705	12.5%	-0.7%	2,875	13.3%	-1.2%	2,853	13.2%	-0.9%	4,093	18.9%	-1.3%	2,069	9.5%	-1.0%
AUG	21,555	-0.53%	3,962	18.4%	-0.2%	295	1.4%	0.3%	2,799	13.0%	-0.4%	2,677	12.4%	-1.0%	2,839	13.2%	-1.3%	2,841	13.2%	-0.4%	4,076	18.9%	-0.4%	2,066	9.6%	-0.1%
SEP	21,464	-0.42%	3,959	18.4%	-0.1%	298	1.4%	1.0%	2,800	13.0%	0.0%	2,658	12.4%	-0.7%	2,827	13.2%	-0.4%	2,818	13.1%	-0.8%	4,033	18.8%	-1.1%	2,071	9.6%	0.2%
OCT	21,667	0.95%	3,973	18.3%	0.4%	296	1.4%	-0.7%	2,809	13.0%	0.3%	2,673	12.3%	0.6%	2,854	13.2%	1.0%	2,837	13.1%	0.7%	4,124	19.0%	2.3%	2,101	9.7%	1.4%
NOV	21,742	0.35%	3,966	18.2%	-0.2%	306	1.4%	3.4%	2,810	12.9%	0.0%	2,671	12.3%	-0.1%	2,852	13.1%	-0.1%	2,868	13.2%	1.1%	4,151	19.1%	0.7%	2,118	9.7%	0.8%
DEC	21,696	-0.21%	3,959	18.2%	-0.2%	310	1.4%	1.3%	2,813	13.0%	0.1%	2,629	12.1%	-1.6%	2,843	13.1%	-0.3%	2,880	13.3%	0.4%	4,148	19.1%	-0.1%	2,114	9.7%	-0.2%
JAN	21,826	0.60%	3,957	18.1%	-0.1%	309	1.4%	-0.3%	2,834	13.0%	0.7%	2,632	12.1%	0.1%	2,870	13.1%	0.9%	2,896	13.3%	0.6%	4,180	19.2%	0.8%	2,148	9.8%	1.6%
FEB																										
MAR																										
APR																										
MAY																										
JUN																										
FY AVG	21,660	0.0%	3,964	18.3%	0.0%	301	1.4%	0.7%	2,811	13.0%	0.2%	2,664	12.3%	-0.5%	2,851	13.2%	-0.2%	2,856	13.2%	0.1%	4,115	19.0%	0.1%	2,098	9.7%	0.4%

***Excludes Robbery (Prior to September 2000, these offenses only included Theft, Stolen Property and Burglary - now includes All Property except Robbery)

**All Primary Offense information is reported one month in arrears.

The data used for this report was extracted by Strategic Technology Solutions (STS), a division within the Tennessee Department of Finance & Administration, from the Tennessee Offender Management Information System (TOMIS) and summarized by Decision Support: Research & Planning of the Tennessee Department of Correction.

PROJECTED INCARCERATED POPULATION VS. ACTUAL
October 2017 - PRESENT



Projections Updated March, 2019

The data used for this report was extracted by Strategic Technology Solutions (STS), a division within the Tennessee Department of Finance & Administration, from the Tennessee Offender Management Information System (TOMIS) and summarized by Decision Support: Research & Planning of the Tennessee Department of Correction.

**INCARCERATED FELON POPULATION
PROJECTIONS VS. ACTUAL
Fiscal Years 2017/18- 2019/20**

2017/2018	PROJECTED	ACTUAL	DIFF	% DIFF
JULY	29,756	30,185	429	1.4%
AUGUST	29,653	30,318	665	2.2%
SEPTEMBER	30,239	30,491	252	0.8%
OCTOBER	30,205	30,285	80	0.3%
NOVEMBER	30,194	30,421	227	0.8%
DECEMBER	30,204	30,054	-150	-0.5%
JANUARY	30,176	30,176	0	0.0%
FEBRUARY	30,203	30,193	-10	0.0%
MARCH	30,174	30,082	-92	-0.3%
APRIL	30,215	30,186	-29	-0.1%
MAY	30,072	30,321	249	0.8%
JUNE	30,092	30,187	95	0.3%
FY AVERAGE	30,099	30,242	143	0.5%

2018/2019	PROJECTED	ACTUAL	DIFF	% DIFF
JULY	30,077	30,399	322	1.1%
AUGUST	29,974	30,433	459	1.5%
SEPTEMBER	30,034	30,547	513	1.7%
OCTOBER	29,993	30,361	368	1.2%
NOVEMBER	29,851	30,369	518	1.7%
DECEMBER	29,804	30,128	324	1.1%
JANUARY	29,840	30,473	633	2.1%
FEBRUARY	29,851	30,419	568	1.9%
MARCH	30,512	30,478	-34	-0.1%
APRIL	30,480	30,560	80	0.3%
MAY	30,420	30,660	240	0.8%
JUNE	30,397	30,613	216	0.7%
FY AVERAGE	30,103	30,453	350	1.2%

2019/2020	PROJECTED	ACTUAL	DIFF	% DIFF
JULY	30,531	30,625	94	0.3%
AUGUST	30,526	30,531	5	0.0%
SEPTEMBER	30,618	30,612	-6	0.0%
OCTOBER	30,556	30,403	-153	-0.5%
NOVEMBER	30,461	30,346	-115	-0.4%
DECEMBER	30,482	29,852	-630	-2.1%
JANUARY	30,569	29,841	-728	-2.4%
FEBRUARY	30,639	29,973	-666	-2.2%
MARCH	30,833			
APRIL	30,928			
MAY	30,866			
JUNE	30,881			
FY AVERAGE	30,658			

These tables compare the actual population to the projection model. Thus, whenever the actual population exceeds the projected population, the % difference is interpreted as exceeding the projected population.

*Note: Projections were updated March, 2019.
Averages are column averages.*

The data used for this report was extracted by Strategic Technology Solutions (STS), a division within the Tennessee Department of Finance & Administration, from the Tennessee Offender Management Information System (TOMIS) and summarized by Decision Support: Research & Planning of the Tennessee Department of Correction.

INCARCERATED FELON POPULATIONS
Fiscal Years 2012/13 - 2019/20
as of February 29, 2020

	Total Felon Population (A+B+C)	Monthly Change	Monthly Percent Change	TDOC Facilities (A)	Percent of Total	TDOC Backup (B)	Percent of Total	Locally Sentenced (C)	Percent of Total	Local Total (B+C)
FY AVG.										
2012/2013	29,654			20,181	68.1%	4,913	16.6%	4,560	15.4%	9,473
2013/2014	29,758			20,945	70.4%	4,546	15.3%	4,267	14.3%	8,813
2014/2015	29,572			20,870	70.6%	4,685	15.8%	4,017	13.6%	8,702
2015/2016	29,103			20,275	69.7%	5,015	17.2%	3,813	13.1%	8,828
2016/2017	29,729			21,737	73.1%	4,427	14.9%	3,564	12.0%	7,992

2017/2018

JULY	30,185	24	0.1%	22,168	73.4%	4,613	15.3%	3,404	11.3%	8,017
AUGUST	30,318	133	0.4%	22,196	73.2%	4,698	15.5%	3,424	11.3%	8,122
SEPTEMBER	30,491	173	0.6%	22,214	72.9%	4,758	15.6%	3,519	11.5%	8,277
OCTOBER	30,285	-206	-0.7%	22,229	73.4%	4,669	15.4%	3,387	11.2%	8,056
NOVEMBER	30,421	136	0.4%	22,141	72.8%	4,883	16.1%	3,397	11.2%	8,280
DECEMBER	30,054	-367	-1.2%	22,052	73.4%	4,776	15.9%	3,226	10.7%	8,002
JANUARY	30,176	122	0.4%	21,973	72.8%	4,959	16.4%	3,244	10.8%	8,203
FEBRUARY	30,193	17	0.1%	21,960	72.7%	4,991	16.5%	3,242	10.7%	8,233
MARCH	30,082	-111	-0.4%	21,972	73.0%	4,762	15.8%	3,348	11.1%	8,110
APRIL	30,186	104	0.3%	22,086	73.2%	4,706	15.6%	3,394	11.2%	8,100
MAY	30,321	135	0.4%	22,220	73.3%	4,657	15.4%	3,444	11.4%	8,101
JUNE	30,187	-134	-0.4%	22,339	74.0%	4,463	14.8%	3,385	11.2%	7,848
FY Average	30,242	2	0.0%	22,129	73.2%	4,745	15.7%	3,368	11.1%	8,112

2018/2019

JULY	30,399	212	0.7%	22,295	73.3%	4,680	15.4%	3,424	11.3%	8,104
AUGUST	30,433	34	0.1%	22,281	73.2%	4,670	15.3%	3,482	11.4%	8,152
SEPTEMBER	30,547	114	0.4%	22,279	72.9%	4,748	15.5%	3,520	11.5%	8,268
OCTOBER	30,361	-186	-0.6%	22,243	73.3%	4,710	15.5%	3,408	11.2%	8,118
NOVEMBER	30,369	8	0.0%	22,119	72.8%	4,854	16.0%	3,396	11.2%	8,250
DECEMBER	30,128	-241	-0.8%	21,945	72.8%	4,908	16.3%	3,275	10.9%	8,183
JANUARY	30,473	345	1.1%	21,942	72.0%	5,184	17.0%	3,347	11.0%	8,531
FEBRUARY	30,419	-54	-0.2%	21,888	72.0%	5,129	16.9%	3,402	11.2%	8,531
MARCH	30,478	59	0.2%	21,933	72.0%	5,261	17.3%	3,284	10.8%	8,545
APRIL	30,560	82	0.3%	21,889	71.6%	5,302	17.3%	3,369	11.0%	8,671
MAY	30,660	100	0.3%	21,890	71.4%	5,338	17.4%	3,432	11.2%	8,770
JUNE	30,613	-47	-0.2%	21,855	71.4%	5,319	17.4%	3,439	11.2%	8,758
FY Average	30,453	36	0.1%	22,047	72.4%	5,009	16.4%	3,398	11.2%	8,407

2019/2020

JULY	30,625	12	0.0%	21,712	70.9%	5,559	18.2%	3,354	11.0%	8,913
AUGUST	30,531	-94	-0.3%	21,598	70.7%	5,568	18.2%	3,365	11.0%	8,933
SEPTEMBER	30,612	81	0.3%	21,510	70.3%	5,681	18.6%	3,421	11.2%	9,102
OCTOBER	30,403	-209	-0.7%	21,711	71.4%	5,332	17.5%	3,360	11.1%	8,692
NOVEMBER	30,346	-57	-0.2%	21,789	71.8%	5,102	16.8%	3,455	11.4%	8,557
DECEMBER	29,852	-494	-1.6%	21,738	72.8%	4,801	16.1%	3,313	11.1%	8,114
JANUARY	29,841	-11	0.0%	21,871	73.3%	4,658	15.6%	3,312	11.1%	7,970
FEBRUARY	29,973	132	0.4%	21,837	72.9%	4,818	16.1%	3,318	11.1%	8,136
MARCH										
APRIL										
MAY										
JUNE										
FY Average	30,273	-80	-0.3%	21,721	71.8%	5,190	17.1%	3,362	11.1%	8,552

Population figures on each year summary line are monthly averages.

The data used for this report was extracted by Strategic Technology Solutions (STS), a division within the Tennessee Department of Finance & Administration, from the Tennessee Offender Management Information System (TOMIS) and summarized by Decision Support: Research & Planning of the Tennessee Department of Correction.

INCARCERATED FELON POPULATIONS
Fiscal Years 2001/02 - 2018/19

INCARCERATED FELON POPULATION TOTALS AT FISCAL YEAR END (JUNE 30) FY 2001/02 - FY 2018/19

	TOTAL FELON POP. (A+B+C)	TOTAL CHANGE	PERCENT CHANGE	TDOC FACILITIES (A)	PERCENT OF TOTAL	TDOC BACKUP (B)	PERCENT OF TOTAL	LOCALLY SENTENCED (C)	PERCENT OF TOTAL	LOCAL JAIL TOTAL (B+C)
2001-02	24,235	1,173	5.1%	17,715	73.1%	2,505	10.3%	4,015	16.6%	6,520
2002-03	25,469	1,234	5.1%	19,408	76.2%	1,956	7.7%	4,105	16.1%	6,061
2003-04	25,865	396	1.6%	19,408	75.0%	2,110	8.2%	4,347	16.8%	6,457
2004-05	26,209	344	1.3%	19,432	74.1%	2,321	8.9%	4,456	17.0%	6,777
2005-06	26,212	3	0.0%	19,433	74.1%	2,322	8.9%	4,457	17.0%	6,779
2006-07	26,551	339	1.3%	19,341	72.8%	2,023	7.6%	5,187	19.5%	7,210
2007-08	26,998	447	1.7%	19,497	72.2%	2,204	8.2%	5,297	19.6%	7,501
2008-09	27,325	327	1.2%	19,462	71.2%	2,465	9.0%	5,398	19.8%	7,863
2009-10	27,164	-161	-0.6%	20,213	74.4%	2,573	9.5%	4,378	16.1%	6,951
2010-11	28,473	1,309	4.8%	20,428	71.7%	3,696	13.0%	4,349	15.3%	8,045
2011-12	29,869	1,396	4.9%	20,236	67.7%	4,911	16.4%	4,722	15.8%	9,633
2012-13	29,654	-215	-0.7%	20,181	68.1%	4,913	16.6%	4,560	15.4%	9,473
2013-14	29,885	231	0.8%	21,246	71.1%	4,483	15.0%	4,156	13.9%	8,639
2014-15	29,263	-622	-2.1%	20,349	69.5%	5,007	17.1%	3,907	13.4%	8,914
2015-16	29,362	99	0.3%	20,802	70.8%	4,719	16.1%	3,841	13.1%	8,560
2016-17	30,161	799	2.7%	22,225	73.7%	4,556	15.1%	3,380	11.2%	7,936
2017-18	30,187	26	0.1%	22,339	74.0%	4,463	14.8%	3,385	11.2%	7,848
2018-19	30,613	426	1.4%	21,855	71.4%	5,319	17.4%	3,439	11.2%	8,758

INCARCERATED FELON POPULATION AVERAGES FY 2001/02 - FY 2018/19

	AVG. TOTAL FELON POP. (A+B+C)	ANNUAL CHANGE	PERCENT CHANGE	TDOC FACILITIES (A)	PERCENT OF TOTAL	TDOC BACKUP (B)	PERCENT OF TOTAL	LOCALLY SENTENCED (C)	PERCENT OF TOTAL	LOCAL JAIL TOTAL (B+C)
2001-02	23,891	1,266	5.6%	17,611	73.7%	2,143	9.0%	4,137	17.3%	6,280
2002-03	24,913	1,022	4.3%	18,436	74.0%	2,313	9.3%	4,164	16.7%	6,477
2003-04	25,635	722	2.9%	19,404	75.7%	2,021	7.9%	4,210	16.4%	6,231
2004-05	26,036	401	1.6%	19,431	74.6%	2,180	8.4%	4,425	17.0%	6,605
2005-06	26,323	287	1.1%	19,406	73.7%	2,293	8.7%	4,624	17.6%	6,917
2006-07	26,100	-223	-0.8%	19,379	74.2%	1,885	7.2%	4,836	18.5%	6,721
2007-08	26,801	701	2.7%	19,428	72.5%	2,025	7.6%	5,347	20.0%	7,372
2008-09	27,411	610	2.3%	19,463	71.0%	2,509	9.2%	5,440	19.8%	7,949
2009-10	27,311	-100	-0.4%	20,028	73.3%	2,281	8.4%	5,002	18.3%	7,283
2010-11	27,782	471	1.7%	20,274	73.0%	2,966	10.7%	4,542	16.3%	7,508
2011-12	29,232	1,450	5.2%	20,217	69.2%	4,456	15.2%	4,559	15.6%	9,015
2012-13	29,654	422	1.4%	20,181	68.1%	4,913	16.6%	4,560	15.4%	9,473
2013-14	29,758	104	0.4%	20,945	70.4%	4,546	15.3%	4,267	14.3%	8,813
2014-15	29,572	-186	-0.6%	20,870	70.6%	4,685	15.8%	4,017	13.6%	8,702
2015-16	29,103	-469	-1.6%	20,275	69.7%	5,015	17.2%	3,813	13.1%	8,828
2016-17	29,728	625	2.1%	21,737	73.1%	4,427	14.9%	3,564	12.0%	7,991
2017-18	30,242	514	1.7%	22,129	73.2%	4,745	15.7%	3,368	11.1%	8,112
2018-19	30,453	212	0.7%	22,047	72.4%	5,009	16.4%	3,398	11.2%	8,407

The data used for this report was extracted by Strategic Technology Solutions (STS), a division within the Tennessee Department of Finance & Administration, from the Tennessee Offender Management Information System (TOMIS) and summarized by Decision Support: Research & Planning of the Tennessee Department of Correction.

**LOCAL JAIL POPULATIONS
FISCAL YEARS 2017/18 - 2019/20
as of February 29, 2020**

(Source: TDOC Jail Summary Report)

	Total Jail Pop.	Monthly Change	% Change	Total TDOC Inmates	Local Felons	Federal & Others	Other Convicted Felons	Convicted Misdem.	Total Pre-trial Detainees	% TDOC Felons	% Local Felons	% Federal & Others	% Other Conv. Felons	% Conv. Misdem.	% Pre-trial Detainees
	2018/2019														
JULY	31,436	294	0.9%	4,680	3,424	947	879	5,195	16,311	15%	11%	3%	3%	17%	52%
AUGUST	31,715	279	0.9%	4,670	3,482	979	876	5,522	16,186	15%	11%	3%	3%	17%	51%
SEPTEMBER	31,663	-52	-0.2%	4,748	3,520	1089	811	5,406	16,089	15%	11%	3%	3%	17%	51%
OCTOBER	31,437	-226	-0.7%	4,710	3,408	1072	811	5,065	16,371	15%	11%	3%	3%	16%	52%
NOVEMBER	30,524	-913	-2.9%	4,854	3,396	1092	831	5,154	15,197	16%	11%	4%	3%	17%	50%
DECEMBER	30,167	-357	-1.2%	4,908	3,275	1039	786	4,496	15,663	16%	11%	3%	3%	15%	52%
JANUARY	30,814	647	2.1%	5,184	3,347	987	782	4,905	15,609	17%	11%	3%	3%	16%	51%
FEBRUARY	30,962	148	0.5%	5,129	3,402	1048	874	4,948	15,561	17%	11%	3%	3%	16%	50%
MARCH	30,894	-68	-0.2%	5,261	3,284	1025	838	4,979	15,507	17%	11%	3%	3%	16%	50%
APRIL	31,156	262	0.8%	5,302	3,369	1019	860	5,109	15,497	17%	11%	3%	3%	16%	50%
MAY	31,391	235	0.8%	5,338	3,432	1089	862	5,070	15,600	17%	11%	3%	3%	16%	50%
JUNE	31,806	415	1.3%	5,319	3,439	1021	888	5,193	15,946	17%	11%	3%	3%	16%	50%
AVERAGE	31,164			5,009	3,398	1033.92	842	5,087	15,795	16%	11%	3%	3%	16%	51%

	Total Jail Pop.	Monthly Change	% Change	Total TDOC Inmates	Local Felons	Federal & Others	Other Convicted Felons	Convicted Misdem.	Total Pre-trial Detainees	% TDOC Felons	% Local Felons	% Federal & Others	% Other Conv. Felons	% Conv. Misdem.	% Pre-trial Detainees
	2019/2020														
JULY	31,880	74	0.2%	5,559	3,354	1100	814	5,125	15,928	17%	11%	3%	3%	16%	50%
AUGUST	32,236	356	1.1%	5,568	3,365	1112	799	5,275	16,117	17%	10%	3%	2%	16%	50%
SEPTEMBER	32,155	-81	-0.3%	5,681	3,421	1076	760	5,029	16,188	18%	11%	3%	2%	16%	50%
OCTOBER	31,204	-951	-3.0%	5,332	3,360	997	797	4,816	15,902	17%	11%	3%	3%	15%	51%
NOVEMBER	30,349	-855	-2.7%	5,102	3,455	951	800	4,773	15,268	17%	11%	3%	3%	16%	50%
DECEMBER	29,389	-960	-3.2%	4,801	3,313	921	786	4,248	15,320	16%	11%	3%	3%	14%	52%
JANUARY	30,008	619	2.1%	4,658	3,312	1023	845	4,819	15,351	16%	11%	3%	3%	16%	51%
FEBRUARY	29,858	-150	-0.5%	4,818	3,318	1002	781	4,823	15,116	16%	11%	3%	3%	16%	51%
MARCH															
APRIL															
MAY															
JUNE															
AVERAGE	30,885			5,190	3,362	1022.75	798	4,864	15,649	17%	11%	3%	3%	16%	51%

The data used for this report was extracted by Strategic Technology Solutions (STS), a division within the Tennessee Department of Finance & Administration, from the Tennessee Offender Management Information System (TOMIS) and summarized by Decision Support: Research & Planning of the Tennessee Department of Correction.

**FELON ADMISSIONS IN TENNESSEE
FISCAL YEAR 2019/20**

	TOTAL ADMISSIONS	PERCENT CHANGE	NEW COMMITS	PERCENT OF TOTAL	VIOLATORS RETURNED	PERCENT OF TOTAL	ESCAPEES & OTHERS	PERCENT OF TOTAL
2019/2020								
TDOC*								
JULY	986	30.6%	601	61.0%	376	38.1%	9	0.9%
AUGUST	970	-1.6%	571	58.9%	394	40.6%	5	0.5%
SEPTEMBER	890	-8.2%	523	58.8%	355	39.9%	12	1.3%
OCTOBER	833	-6.4%	481	57.7%	345	41.4%	7	0.8%
NOVEMBER	899	7.9%	550	61.2%	336	37.4%	13	1.4%
DECEMBER	639	-28.9%	383	59.9%	250	39.1%	6	0.9%
JANUARY	744	16.4%	430	57.8%	304	40.9%	10	1.3%
FEBRUARY	504	-32.3%	283	56.2%	218	43.3%	3	0.6%
MARCH								
APRIL								
MAY								
JUNE								
TOTAL	6,465		3,822	59.1%	2,578	39.9%	65	1.0%

	TOTAL ADMISSIONS	PERCENT CHANGE	NEW COMMITS	PERCENT OF TOTAL	VIOLATORS RETURNED	PERCENT OF TOTAL	ESCAPEES & OTHERS	PERCENT OF TOTAL
2019/2020								
LOCALLY SENTENCED								
JULY	126	10.5%	77	61.1%	46	36.5%	3	2.4%
AUGUST	101	-19.8%	78	77.2%	22	21.8%	1	1.0%
SEPTEMBER	130	28.7%	96	73.8%	32	24.6%	2	1.5%
OCTOBER	134	3.1%	104	77.6%	29	21.6%	1	0.7%
NOVEMBER	109	-18.7%	82	75.2%	23	21.1%	4	3.7%
DECEMBER	107	-1.8%	80	74.8%	26	24.3%	1	0.9%
JANUARY	99	-7.5%	71	71.7%	26	26.3%	2	2.0%
FEBRUARY	103	4.0%	74	71.8%	26	25.2%	3	2.9%
MARCH								
APRIL								
MAY								
JUNE								
TOTAL	909		662	72.8%	230	25.3%	17	1.9%

	TOTAL ADMISSIONS	PERCENT CHANGE	NEW COMMITS	PERCENT OF TOTAL	VIOLATORS RETURNED	PERCENT OF TOTAL	ESCAPEES & OTHERS	PERCENT OF TOTAL
2019/2020								
SYSTEM TOTAL								
JULY	1,112	28.0%	678	61.0%	422	37.9%	12	1.1%
AUGUST	1,071	-3.7%	649	60.6%	416	38.8%	6	0.6%
SEPTEMBER	1,020	-4.8%	619	60.7%	387	37.9%	14	1.4%
OCTOBER	967	-5.2%	585	60.5%	374	38.7%	8	0.8%
NOVEMBER	1,008	4.2%	632	62.7%	359	35.6%	17	1.7%
DECEMBER	746	-26.0%	463	62.1%	276	37.0%	7	0.9%
JANUARY	843	13.0%	501	59.4%	330	39.1%	12	1.4%
FEBRUARY	607	-28.0%	357	58.8%	244	40.2%	6	1.0%
MARCH								
APRIL								
MAY								
JUNE								
TOTAL	7,374		4,484	60.8%	2,808	38.1%	82	1.1%

Admission statistics are incomplete because all data are not received by TDOC immediately after sentencing. In some cases information is not received until several months after sentencing; therefore, the numbers for any given month may be different from the previous month's report.

***The "TDOC" category of admissions is a combination of convicted felons housed in DOC facilities and jail backup.**

The data used for this report was extracted by Strategic Technology Solutions (STS), a division within the Tennessee Department of Finance & Administration, from the Tennessee Offender Management Information System (TOMIS) and summarized by Decision Support: Research & Planning of the Department of Correction.

**FELON ADMISSIONS IN TENNESSEE
FISCAL YEAR 2018/19**

TOTAL ADMISSIONS	PERCENT CHANGE	NEW COMMITS	PERCENT OF TOTAL	VIOLATORS RETURNED	PERCENT OF TOTAL	ESCAPEES & OTHERS	PERCENT OF TOTAL
------------------	----------------	-------------	------------------	--------------------	------------------	-------------------	------------------

2018/2019

TDOC*

JULY	1,003	25.1%	595	59.3%	400	39.9%	8	0.8%
AUGUST	1,019	1.6%	580	56.9%	430	42.2%	9	0.9%
SEPTEMBER	885	-13.2%	534	60.3%	343	38.8%	8	0.9%
OCTOBER	888	0.3%	547	61.6%	338	38.1%	3	0.3%
NOVEMBER	913	2.8%	543	59.5%	358	39.2%	12	1.3%
DECEMBER	689	-24.5%	366	53.1%	318	46.2%	5	0.7%
JANUARY	967	40.3%	577	59.7%	384	39.7%	6	0.6%
FEBRUARY	870	-10.0%	541	62.2%	322	37.0%	7	0.8%
MARCH	891	2.4%	535	60.0%	347	38.9%	9	1.0%
APRIL	944	5.9%	557	59.0%	377	39.9%	10	1.1%
MAY	981	3.9%	583	59.4%	392	40.0%	6	0.6%
JUNE	755	-23.0%	454	60.1%	299	39.6%	2	0.3%
TOTAL	10,805		6,412	59.3%	4,308	39.9%	85	0.8%

2018/2019

LOCALLY SENTENCED

JULY	142	10.1%	102	71.8%	39	27.5%	1	0.7%
AUGUST	172	21.1%	121	70.3%	49	28.5%	2	1.2%
SEPTEMBER	129	-25.0%	90	69.8%	37	28.7%	2	1.6%
OCTOBER	142	10.1%	104	73.2%	36	25.4%	2	1.4%
NOVEMBER	157	10.6%	118	75.2%	38	24.2%	1	0.6%
DECEMBER	103	-34.4%	68	66.0%	31	30.1%	4	3.9%
JANUARY	129	25.2%	93	72.1%	35	27.1%	1	0.8%
FEBRUARY	167	29.5%	128	76.6%	37	22.2%	2	1.2%
MARCH	103	-38.3%	71	68.9%	31	30.1%	1	1.0%
APRIL	123	19.4%	85	69.1%	35	28.5%	3	2.4%
MAY	142	15.4%	90	63.4%	52	36.6%	0	0.0%
JUNE	114	-19.7%	83	72.8%	29	25.4%	2	1.8%
TOTAL	1,623		1,153	71.0%	449	27.7%	21	1.3%

2018/2019

SYSTEM TOTAL

JULY	1,145	23.0%	697	60.9%	439	38.3%	9	0.8%
AUGUST	1,191	4.0%	701	58.9%	479	40.2%	11	0.9%
SEPTEMBER	1,014	-14.9%	624	61.5%	380	37.5%	10	1.0%
OCTOBER	1,030	1.6%	651	63.2%	374	36.3%	5	0.5%
NOVEMBER	1,070	3.9%	661	61.8%	396	37.0%	13	1.2%
DECEMBER	792	-26.0%	434	54.8%	349	44.1%	9	1.1%
JANUARY	1,096	38.4%	670	61.1%	419	38.2%	7	0.6%
FEBRUARY	1,037	-5.4%	669	64.5%	359	34.6%	9	0.9%
MARCH	994	-4.1%	606	61.0%	378	38.0%	10	1.0%
APRIL	1,067	7.3%	642	60.2%	412	38.6%	13	1.2%
MAY	1,123	5.2%	673	59.9%	444	39.5%	6	0.5%
JUNE	869	-22.6%	537	61.8%	328	37.7%	4	0.5%
TOTAL	12,428		7,565	60.9%	4,757	38.3%	106	0.9%

Admission statistics are incomplete because all data are not received by TDOC immediately after sentencing. In some cases information is not received until several months after sentencing; therefore, the numbers for any given month may be different from the previous month's report.

The data used for this report was extracted by Strategic Technology Solutions (STS), a division within the Tennessee Department of Finance & Administration, from the Tennessee Offender Management Information System (TOMIS) and summarized by Decision Support: Research & Planning of the Tennessee Department of Correction

**FELON ADMISSIONS IN TENNESSEE
FISCAL YEARS 2003/04 - 2018/19**

TOTAL ADMISSIONS	PERCENT CHANGE	NEW COMMITTS	PERCENT OF TOTAL	VIOLATORS RETURNED	PERCENT OF TOTAL	ESCAPEES & OTHERS	PERCENT OF TOTAL
---------------------	-------------------	-----------------	---------------------	-----------------------	---------------------	----------------------	---------------------

TDOC*								
2003-04	10,262	7.7%	6,086	59.3%	4,047	39.4%	129	1.3%
2004-05	10,417	1.5%	6,027	57.9%	4,275	41.0%	115	1.1%
2005-06	10,913	4.8%	6,299	57.7%	4,492	41.2%	122	1.1%
2006-07	11,208	2.7%	6,343	56.6%	4,733	42.2%	132	1.2%
2007-08	11,197	-0.1%	6,326	56.5%	4,748	42.4%	123	1.1%
2008-09	11,111	-0.8%	6,486	58.4%	4,500	40.5%	125	1.1%
2009-10	10,425	-6.2%	6,328	60.7%	3,990	38.3%	107	1.0%
2010-11	11,329	8.7%	6,816	60.2%	4,366	38.5%	147	1.3%
2011-12	11,767	3.9%	7,033	59.8%	4,603	39.1%	131	1.1%
2012-13	11,824	0.5%	6,937	58.7%	4,753	40.2%	134	1.1%
2013-14	11,786	-0.3%	6,819	57.9%	4,861	41.2%	106	0.9%
2014-15	10,887	-7.6%	6,128	56.3%	4,639	42.6%	120	1.1%
2015-16	10,534	-3.2%	6,022	57.2%	4,379	41.6%	133	1.3%
2016-17	10,483	-0.5%	6,146	58.6%	4,254	40.6%	83	0.8%
2017-18	10,517	0.3%	6,208	59.0%	4,208	40.0%	101	1.0%
2018-19	10,805	2.7%	6,412	59.3%	4,308	39.9%	85	0.8%

LOCALLY SENTENCED								
2003-04	3,582	-4.0%	2,350	65.6%	1,214	33.9%	18	0.5%
2004-05	3,759	4.9%	2,413	64.2%	1,327	35.3%	19	0.5%
2005-06	3,638	-3.2%	2,321	64.2%	1,296	35.6%	21	0.6%
2006-07	3,667	0.8%	2,322	63.3%	1,332	36.3%	13	0.4%
2007-08	3,615	-1.4%	2,443	67.6%	1,152	31.9%	20	0.6%
2008-09	3,457	-4.4%	2,292	66.3%	1,147	33.2%	18	0.5%
2009-10	3,363	-2.7%	2,357	70.1%	988	29.4%	18	0.5%
2010-11	3,326	-1.1%	2,354	70.8%	934	28.1%	38	1.1%
2011-12	3,438	3.4%	2,382	69.3%	1,012	29.4%	44	1.3%
2012-13	2,889	-16.0%	1,877	65.0%	964	33.4%	48	1.7%
2013-14	2,598	-10.1%	1,672	64.4%	884	34.0%	42	1.6%
2014-15	2,308	-11.2%	1,573	68.2%	700	30.3%	35	1.5%
2015-16	2,230	-3.4%	1,494	67.0%	694	31.1%	42	1.9%
2016-17	1,852	-17.0%	1,236	66.7%	583	31.5%	33	1.8%
2017-18	1,680	-9.3%	1,146	68.2%	519	30.9%	15	0.9%
2018-19	1,623	-3.4%	1,153	71.0%	449	27.7%	21	1.3%

SYSTEM TOTAL								
2003-04	13,844	4.4%	8,436	60.9%	5,261	38.0%	147	1.1%
2004-05	14,176	2.4%	8,440	59.5%	5,602	39.5%	134	0.9%
2005-06	14,551	2.6%	8,620	59.2%	5,788	39.8%	143	1.0%
2006-07	14,875	2.2%	8,665	58.3%	6,065	40.8%	145	1.0%
2007-08	14,812	-0.4%	8,769	59.2%	5,900	39.8%	143	1.0%
2008-09	14,568	-1.6%	8,778	60.3%	5,647	38.8%	143	1.0%
2009-10	13,788	-5.4%	8,685	63.0%	4,978	36.1%	125	0.9%
2010-11	14,655	6.3%	9,170	62.6%	5,300	36.2%	185	1.3%
2011-12	15,205	3.8%	9,415	61.9%	5,615	36.9%	175	1.2%
2012-13	14,713	-3.2%	8,814	59.9%	5,717	38.9%	182	1.2%
2013-14	14,384	-2.2%	8,491	59.0%	5,745	39.9%	148	1.0%
2014-15	13,195	-8.3%	7,701	58.4%	5,339	40.5%	155	1.2%
2015-16	12,764	-3.3%	7,516	58.9%	5,073	39.7%	175	1.4%
2016-17	12,335	-3.4%	7,382	59.8%	4,837	39.2%	116	0.9%
2017-18	12,197	-1.1%	7,354	60.3%	4,727	38.8%	116	1.0%
2018-19	12,428	1.9%	7,565	60.9%	4,757	38.3%	106	0.9%

*The "TDOC" category of admissions is a combination of convicted felons housed in DOC facilities and jail backup.

The data used for this report was extracted by Strategic Technology Solutions (STS), a division within the Tennessee Department of Finance & Administration, from the Tennessee Offender Management Information System (TOMIS) and summarized by Decision Support: Research & Planning of the Tennessee Department of Correction.

**FELON INMATE RELEASES IN TENNESSEE
FISCAL YEAR 2019/20**

	TOTAL RELEASES	PERCENT CHANGE	PAROLE	PERCENT OF TOTAL	PROBATION COM. COR.	PERCENT OF TOTAL	EXPIRATION & OTHERS	PERCENT OF TOTAL
2019/2020	TDOC							
JULY	525	32.2%	263	50.1%	38	7.2%	224	42.7%
AUGUST	477	-9.1%	222	46.5%	35	7.3%	220	46.1%
SEPTEMBER	468	-1.9%	233	49.8%	29	6.2%	206	44.0%
OCTOBER	520	11.1%	271	52.1%	35	6.7%	214	41.2%
NOVEMBER	502	-3.5%	259	51.6%	34	6.8%	209	41.6%
DECEMBER	541	7.8%	305	56.4%	34	6.3%	202	37.3%
JANUARY	500	-7.6%	249	49.8%	43	8.6%	208	41.6%
FEBRUARY	463	-7.4%	221	47.7%	43	9.3%	199	43.0%
MARCH								
APRIL								
MAY								
JUNE								
TOTAL	3,996		2,023	50.6%	291	7.3%	1,682	42.1%
2019/2020	TDOC BACKUP							
JULY	642	7.5%	55	8.6%	373	58.1%	214	33.3%
AUGUST	670	4.4%	48	7.2%	399	59.6%	223	33.3%
SEPTEMBER	605	-9.7%	64	10.6%	342	56.5%	199	32.9%
OCTOBER	666	10.1%	107	16.1%	348	52.3%	211	31.7%
NOVEMBER	675	1.4%	93	13.8%	375	55.6%	207	30.7%
DECEMBER	622	-7.9%	99	15.9%	339	54.5%	184	29.6%
JANUARY	612	-1.6%	82	13.4%	331	54.1%	199	32.5%
FEBRUARY	563	-8.0%	84	14.9%	305	54.2%	174	30.9%
MARCH								
APRIL								
MAY								
JUNE								
TOTAL	5,055		632	12.5%	2,812	55.6%	1,611	31.9%
2019/2020	LOCALLY SENTENCED							
JULY	124	13.8%	11	8.9%	47	38.0%	66	53.2%
AUGUST	151	21.8%	21	13.9%	54	35.9%	76	50.3%
SEPTEMBER	113	-25.2%	11	9.7%	36	32.0%	66	58.4%
OCTOBER	134	18.6%	17	12.7%	37	27.7%	80	59.7%
NOVEMBER	117	-12.7%	14	12.0%	44	37.7%	59	50.4%
DECEMBER	152	29.9%	32	21.1%	49	32.3%	71	46.7%
JANUARY	111	-27.0%	12	10.8%	32	28.9%	67	60.4%
FEBRUARY	119	7.2%	20	16.8%	41	34.6%	58	48.7%
MARCH								
APRIL								
MAY								
JUNE								
TOTAL	1,021		138	13.5%	340	33.3%	543	53.2%
2019/2020	SYSTEM TOTAL							
JULY	1,291	17.0%	329	25.5%	458	35.5%	504	39.0%
AUGUST	1,298	0.5%	291	22.4%	488	37.6%	519	40.0%
SEPTEMBER	1,186	-8.6%	308	26.0%	407	34.3%	471	39.7%
OCTOBER	1,320	11.3%	395	29.9%	420	31.8%	505	38.3%
NOVEMBER	1,294	-2.0%	366	28.3%	453	35.0%	475	36.7%
DECEMBER	1,315	1.6%	436	33.2%	422	32.1%	457	34.8%
JANUARY	1,223	-7.0%	343	28.0%	406	33.2%	474	38.8%
FEBRUARY	1,145	-6.4%	325	28.4%	389	34.0%	431	37.6%
MARCH								
APRIL								
MAY								
JUNE								
TOTAL	10,072		2,793	27.7%	3,443	34.2%	3,836	38.1%

Release statistics are incomplete because all data are not received by TDOC immediately after inmates are released; therefore, the numbers for any given month may be different from the previous month's report.

The data used for this report was extracted by Strategic Technology Solutions (STS), a division within the Tennessee Department of Finance & Administration, from the Tennessee Offender Management Information System (TOMIS) and summarized by Decision Support: Research & Planning of the Tennessee Department of Correction.

**FELON INMATE RELEASES IN TENNESSEE
FISCAL YEAR 2018/19**

TOTAL RELEASES	PERCENT CHANGE	PAROLE	PERCENT OF TOTAL	PROBATION COM. COR.	PERCENT OF TOTAL	EXPIRATION & OTHERS	PERCENT OF TOTAL
----------------	----------------	--------	------------------	---------------------	------------------	---------------------	------------------

2018/2019

TDOC

JULY	418	-7.7%	176	42.1%	43	10.3%	199	47.6%
AUGUST	494	18.2%	208	42.1%	74	15.0%	212	42.9%
SEPTEMBER	404	-18.2%	143	35.4%	51	12.6%	210	52.0%
OCTOBER	467	15.6%	187	40.0%	53	11.3%	227	48.6%
NOVEMBER	472	1.1%	198	41.9%	45	9.5%	229	48.5%
DECEMBER	430	-8.9%	165	38.4%	44	10.2%	221	51.4%
JANUARY	386	-10.2%	132	34.2%	41	10.6%	213	55.2%
FEBRUARY	403	4.4%	172	42.7%	37	9.2%	194	48.1%
MARCH	452	12.2%	194	42.9%	42	9.3%	216	47.8%
APRIL	446	-1.3%	184	41.3%	35	7.8%	227	50.9%
MAY	420	-5.8%	185	44.0%	28	6.7%	207	49.3%
JUNE	397	-5.5%	169	42.6%	35	8.8%	193	48.6%
TOTAL	5,189		2,113	40.7%	528	10.2%	2,548	49.1%

2018/2019

TDOC BACKUP

JULY	587	0.0%	36	6.1%	369	62.9%	182	31.0%
AUGUST	698	18.9%	46	6.6%	457	65.5%	195	27.9%
SEPTEMBER	600	-14.0%	28	4.7%	389	64.8%	183	30.5%
OCTOBER	640	6.7%	44	6.9%	408	63.8%	188	29.4%
NOVEMBER	592	-7.5%	46	7.8%	374	63.2%	172	29.1%
DECEMBER	540	-8.8%	46	8.5%	326	60.4%	168	31.1%
JANUARY	569	5.4%	26	4.6%	357	62.7%	186	32.7%
FEBRUARY	538	-5.4%	42	7.8%	296	55.0%	200	37.2%
MARCH	528	-1.9%	38	7.2%	328	62.1%	162	30.7%
APRIL	572	8.3%	43	7.5%	315	55.1%	214	37.4%
MAY	655	14.5%	40	6.1%	406	62.0%	209	31.9%
JUNE	597	-8.9%	44	7.4%	342	57.3%	211	35.3%
TOTAL	7,116		479	6.7%	4,367	61.4%	2,270	31.9%

2018/2019

LOCALLY SENTENCED

JULY	116	-6.5%	7	6.0%	44	38.0%	65	56.0%
AUGUST	136	17.2%	7	5.1%	63	46.4%	66	48.5%
SEPTEMBER	144	5.9%	20	13.9%	42	29.3%	82	56.9%
OCTOBER	128	-11.1%	15	11.7%	42	32.9%	71	55.5%
NOVEMBER	148	15.6%	9	6.1%	69	46.7%	70	47.3%
DECEMBER	99	-33.1%	10	10.1%	34	34.4%	55	55.6%
JANUARY	106	7.1%	6	5.7%	32	30.3%	68	64.2%
FEBRUARY	124	17.0%	4	3.2%	38	30.7%	82	66.1%
MARCH	116	-6.5%	15	12.9%	36	31.1%	65	56.0%
APRIL	115	-0.9%	9	7.8%	43	37.5%	63	54.8%
MAY	135	17.4%	5	3.7%	64	47.5%	66	48.9%
JUNE	109	-19.3%	10	9.2%	48	44.1%	51	46.8%
TOTAL	1,476		117	7.9%	555	37.6%	804	54.5%

2018/2019

SYSTEM TOTAL

JULY	1,121	-3.8%	219	19.5%	456	40.7%	446	39.8%
AUGUST	1,328	18.5%	261	19.7%	594	44.7%	473	35.6%
SEPTEMBER	1,148	-13.6%	191	16.6%	482	42.0%	475	41.4%
OCTOBER	1,235	7.6%	246	19.9%	503	40.7%	486	39.4%
NOVEMBER	1,212	-1.9%	253	20.9%	488	40.3%	471	38.9%
DECEMBER	1,069	-11.8%	221	20.7%	404	37.8%	444	41.5%
JANUARY	1,061	-0.7%	164	15.5%	430	40.5%	467	44.0%
FEBRUARY	1,065	0.4%	218	20.5%	371	34.8%	476	44.7%
MARCH	1,096	2.9%	247	22.5%	406	37.0%	443	40.4%
APRIL	1,133	3.4%	236	20.8%	393	34.7%	504	44.5%
MAY	1,210	6.8%	230	19.0%	498	41.2%	482	39.8%
JUNE	1,103	-8.8%	223	20.2%	425	38.5%	455	41.3%
TOTAL	13,781		2,709	19.7%	5,450	39.5%	5,622	40.8%

Release statistics are incomplete because all data are not received by TDOC immediately after inmates are released; therefore, the numbers for any given month may be different from the previous month's report.

The data used for this report was extracted by Strategic Technology Solutions (STS), a division within the Tennessee Department of Finance & Administration, from the Tennessee Offender Management Information System (TOMIS) and summarized by Decision Support: Research & Planning of the Tennessee Department of Correction.

**FELON INMATE RELEASES IN TENNESSEE
FISCAL YEARS 2004/05 - 2018/19**

	TOTAL RELEASES	PERCENT CHANGE	PAROLE	PERCENT OF TOTAL	PROBATION COM. COR.	PERCENT OF TOTAL	EXPIRATION & OTHERS	PERCENT OF TOTAL
TDOC								
2004-05	5,804	5.7%	2,767	47.7%	709	12.2%	2,328	40.1%
2005-06	6,146	5.9%	3,152	51.3%	756	12.3%	2,238	36.4%
2006-07	6,882	12.0%	3,453	50.2%	892	13.0%	2,537	36.9%
2007-08	6,636	-3.6%	3,254	49.0%	875	13.2%	2,507	37.8%
2008-09	6,279	-5.4%	3,261	51.9%	676	10.8%	2,342	37.3%
2009-10	6,691	6.6%	3,594	53.7%	818	12.2%	2,279	34.1%
2010-11	5,817	-13.1%	3,064	52.7%	637	11.0%	2,116	36.4%
2011-12	5,541	-4.7%	2,928	52.8%	568	10.3%	2,045	36.9%
2012-13	5,782	4.3%	3,054	52.8%	649	11.2%	2,079	36.0%
2013-14	5,937	2.7%	2,922	49.2%	813	13.7%	2,202	37.1%
2014-15	5,845	-1.5%	2,757	47.2%	760	13.0%	2,328	39.8%
2015-16	5,358	-8.3%	2,467	46.0%	638	11.9%	2,253	42.0%
2016-17	5,019	-6.3%	2,021	40.3%	750	14.9%	2,248	44.8%
2017-18	5,476	9.1%	2,398	43.8%	624	11.4%	2,454	44.8%
2018-19	5,189	-5.2%	2,113	40.7%	528	10.2%	2,548	49.1%
TDOC BACKUP								
2004-05	5,235	9.3%	485	9.3%	3,349	64.0%	1,401	26.8%
2005-06	5,913	13.0%	577	9.8%	3,721	62.9%	1,615	27.3%
2006-07	5,874	-0.7%	594	10.1%	3,804	64.8%	1,476	25.1%
2007-08	6,177	5.2%	642	10.4%	3,955	64.0%	1,580	25.6%
2008-09	6,597	6.8%	810	12.3%	4,054	61.5%	1,733	26.3%
2009-10	6,230	-5.6%	903	14.5%	3,728	59.8%	1,599	25.7%
2010-11	6,424	3.1%	935	14.6%	3,875	60.3%	1,614	25.1%
2011-12	7,289	13.5%	1,242	17.0%	4,228	58.0%	1,819	25.0%
2012-13	8,118	11.4%	1,507	18.6%	4,549	56.0%	2,062	25.4%
2013-14	7,884	-2.9%	1,339	17.0%	4,499	57.1%	2,046	26.0%
2014-15	7,361	-6.6%	1,056	14.3%	4,176	56.7%	2,129	28.9%
2015-16	7,089	-3.7%	963	13.6%	3,778	53.3%	2,348	33.1%
2016-17	6,337	-10.6%	690	10.9%	3,509	55.4%	2,138	33.7%
2017-18	7,303	15.2%	583	8.0%	4,534	62.1%	2,186	29.9%
2018-19	7,116	-2.6%	479	6.7%	4,367	61.4%	2,270	31.9%
LOCALLY SENTENCED								
2004-05	3,337	0.8%	272	8.2%	1,681	50.4%	1,384	41.5%
2005-06	3,544	6.2%	278	7.8%	1,826	51.5%	1,440	40.6%
2006-07	3,409	-3.8%	338	9.9%	1,679	49.3%	1,392	40.8%
2007-08	3,488	2.3%	399	11.4%	1,679	48.1%	1,410	40.4%
2008-09	3,382	-3.0%	389	11.5%	1,592	47.1%	1,401	41.4%
2009-10	3,040	-10.1%	395	13.0%	1,388	45.7%	1,257	41.3%
2010-11	3,182	4.7%	578	18.2%	1,396	43.9%	1,208	38.0%
2011-12	3,285	3.2%	632	19.2%	1,437	43.7%	1,216	37.0%
2012-13	2,979	-9.3%	638	21.4%	1,149	38.6%	1,192	40.0%
2013-14	2,644	-11.2%	501	18.9%	1,035	39.1%	1,108	41.9%
2014-15	2,309	-12.7%	417	18.1%	955	41.4%	937	40.6%
2015-16	2,235	-3.2%	309	13.8%	910	40.7%	1,016	45.5%
2016-17	2,042	-8.6%	275	13.5%	815	39.9%	952	46.6%
2017-18	1,730	-15.3%	219	12.7%	690	39.9%	821	47.5%
2018-19	1,476	-14.7%	117	7.9%	555	37.6%	804	54.5%
SYSTEM TOTAL								
2004-05	14,376	5.8%	3,524	24.5%	5,739	39.9%	5,113	35.6%
2005-06	15,603	8.5%	4,007	25.7%	6,303	40.4%	5,293	33.9%
2006-07	16,165	3.6%	4,385	27.1%	6,375	39.4%	5,405	33.4%
2007-08	16,301	0.8%	4,295	26.3%	6,509	39.9%	5,497	33.7%
2008-09	16,258	-0.3%	4,460	27.4%	6,322	38.9%	5,476	33.7%
2009-10	15,961	-1.8%	4,892	30.6%	5,934	37.2%	5,135	32.2%
2010-11	15,423	-3.4%	4,577	29.7%	5,908	38.3%	4,938	32.0%
2011-12	16,115	4.5%	4,802	29.8%	6,233	38.7%	5,080	31.5%
2012-13	16,879	4.7%	5,199	30.8%	6,347	37.6%	5,333	31.6%
2013-14	16,465	-2.5%	4,762	28.9%	6,347	38.5%	5,356	32.5%
2014-15	15,515	-5.8%	4,230	27.3%	5,891	38.0%	5,394	34.8%
2015-16	14,489	-6.6%	3,705	25.6%	5,231	36.1%	5,553	38.3%
2016-17	13,398	-7.5%	2,986	22.3%	5,074	37.9%	5,338	39.8%
2017-18	14,509	8.3%	3,200	22.1%	5,848	40.3%	5,461	37.6%
2018-19	13,781	-5.0%	2,709	19.7%	5,450	39.5%	5,622	40.8%

The data used for this report was extracted by Strategic Technology Solutions (STS), a division within the Tennessee Department of Finance & Administration, from the Tennessee Offender Management Information System and summarized by Decision Support: Research & Planning in the Tennessee Department of Correction.

**PROBATION AND COMMUNITY CORRECTION POPULATIONS
FISCAL YEARS 2012/13 - 2019/20**

	Probation and Community Correction Total	Monthly Percent Change	Regular Probation	Percent of Total	Intensive Probation	Percent of Total	Community Correction	Percent of Total
FY AVERAGE								
2012/2013	65,348		56,791	86.9%	845	1.3%	7,712	11.8%
2013/2014	66,093		57,549	86.9%	722	1.3%	7,821	11.8%
2014/2015	66,488		57,862	87.0%	645	1.0%	7,981	12.0%
2015/2016	66,167		57,700	87.2%	542	0.8%	7,925	12.0%
2016/2017	66,356		57,861	87.2%	573	0.9%	7,922	11.9%
2017/2018	65,670		5,774	8.8%	800	1.2%	796	1.2%

2018/2019								
July	65,512	-1.2%	56,758	86.6%	1,053	1.6%	7,701	11.8%
August	65,744	0.4%	56,877	86.5%	1,099	1.7%	7,768	11.8%
September	65,784	0.1%	56,793	86.3%	1,121	1.7%	7,870	12.0%
October	65,677	-0.2%	56,646	86.2%	1,134	1.7%	7,897	12.0%
November	65,811	0.2%	56,703	86.2%	1,183	1.8%	7,925	12.0%
December	65,917	0.2%	56,704	86.0%	1,228	1.9%	7,985	12.1%
January	66,107	0.3%	56,769	85.9%	1,266	1.9%	8,072	12.2%
February	66,330	0.3%	56,823	85.7%	1,399	2.1%	8,108	12.2%
March	66,253	-0.1%	56,699	85.6%	1,422	2.1%	8,132	12.3%
April	66,295	0.1%	56,512	85.2%	1,621	2.4%	8,162	12.3%
May	66,439	0.2%	56,633	85.2%	1,756	2.6%	8,050	12.1%
June	66,432	0.0%	56,725	85.4%	1,740	2.6%	7,967	12.0%
FY Average	66,025	0.0%	56,720	85.9%	1,335	2.0%	7,970	12.1%

2019/2020								
July	66,524	0.138%	56,758	85.3%	1,785	2.7%	7,981	12.0%
August	66,589	0.098%	57,005	85.6%	1,855	2.8%	7,729	11.6%
September	66,659	0.105%	57,055	85.6%	1,910	2.9%	7,694	11.5%
October	66,803	0.216%	57,159	85.6%	1,957	2.9%	7,687	11.5%
November	66,913	0.165%	57,202	85.5%	2,016	3.0%	7,695	11.5%
December	66,929	0.024%	57,130	85.4%	2,114	3.2%	7,685	11.5%
January	67,132	0.303%	57,311	85.4%	2,111	3.1%	7,710	11.5%
February	67,213	0.121%	57,303	85.3%	2,189	3.3%	7,721	11.5%
March								
April								
May								
June								
FY Average	66,845	0.1%	57,115	85.4%	1,992	3.0%	7,738	11.6%

**Beginning in April 2010, Community Supervision figures will be reported as of the fifth working day of the following month (e.g. April 2010 figures are according to May 7, 2010 data).*

Population figures on each year-end summary line are monthly averages.

The data used for this report was extracted by Strategic Technology Solutions (STS), a division within the Tennessee Department of Finance & Administration, from the Tennessee Offender Management Information System (TOMIS) and summarized by Decision Support: Research & Planning of the Tennessee Department of Correction.

**PROBATION AND COMMUNITY CORRECTION POPULATIONS AND AVERAGES
FISCAL YEARS 2003/04 - 2018/19**

PROBATION AND COMMUNITY CORRECTION POPULATION TOTALS AT FISCAL YEAR END (JUNE 30) FY 2004/05 - FY 2018/19

	TOTAL PROB. & COM. CORR. POP	TOTAL CHANGE	REGULAR PROBATION	PERCENT OF TOTAL	INTENSIVE PROBATION	PERCENT OF TOTAL	COMM. CORR.	PERCENT OF TOTAL
2003-04	44,476	-4.8%	41,950	94.3%	965	2.2%	6,069	13.6%
2004-05	48,984	10.1%	41,950	85.6%	965	2.0%	6,069	12.4%
2005-06	49,126	0.3%	41,763	85.0%	967	2.0%	6,396	13.0%
2006-07	52,345	6.6%	44,837	85.7%	904	1.7%	6,604	12.6%
2007-08	54,677	4.5%	46,853	85.7%	997	1.8%	6,827	12.5%
2008-09	56,779	3.8%	48,924	86.2%	930	1.6%	6,925	12.2%
2009-10	59,180	4.2%	50,953	86.1%	957	1.6%	7,270	12.3%
2010-11	62,097	4.9%	53,573	86.3%	934	1.5%	7,590	12.2%
2011-12	64,431	3.8%	55,985	86.9%	865	1.3%	7,581	11.8%
2012-13	65,713	2.0%	57,234	87.1%	788	1.2%	7,691	11.7%
2013-14	66,277	0.9%	57,769	87.2%	664	1.0%	7,844	11.8%
2014-15	66,280	0.0%	57,770	87.2%	665	1.0%	7,845	11.8%
2015-16	66,122	-0.2%	57,743	87.3%	509	0.8%	7,870	11.9%
2016-17	66,331	0.3%	57,666	86.9%	759	1.1%	7,906	11.9%
2017-18	65,502	-1.2%	56,754	86.6%	1,032	1.6%	7,716	11.8%
2018-19	66,432	1.4%	56,725	85.4%	1,740	2.6%	7,967	12.0%

PROBATION AND COMMUNITY CORRECTION POPULATION AVERAGES FY 2004/05 - FY 2017/18

	TOTAL PROB. & COM. CORR. POP	ANNUAL CHANGE	REGULAR PROBATION	PERCENT OF TOTAL	INTENSIVE PROBATION	PERCENT OF TOTAL	COMM. CORR.	PERCENT OF TOTAL
2003-04	43,417	3.3%	39,173	90.2%	1,010	2.3%	5,957	13.7%
2004-05	46,140	6.3%	39,173	84.9%	1,010	2.2%	5,957	12.9%
2005-06	47,530	3.0%	40,308	84.8%	988	2.1%	6,234	13.1%
2006-07	51,047	7.4%	43,605	85.4%	931	1.8%	6,511	12.8%
2007-08	53,502	4.8%	45,792	85.6%	975	1.8%	6,735	12.6%
2008-09	55,829	4.3%	47,972	85.9%	972	1.7%	6,885	12.3%
2009-10	58,072	4.0%	50,059	86.2%	943	1.6%	7,070	12.2%
2010-11	60,684	4.5%	52,151	85.9%	980	1.6%	7,553	12.4%
2011-12	63,607	4.8%	55,188	86.8%	908	1.4%	7,511	11.8%
2012-13	65,348	2.7%	56,791	86.9%	845	1.3%	7,712	11.8%
2013-14	66,093	1.1%	57,549	87.1%	722	1.1%	7,822	11.8%
2014-15	66,488	0.6%	57,862	87.0%	645	1.0%	7,981	12.0%
2015-16	66,167	-0.5%	57,700	87.2%	542	0.8%	7,925	12.0%
2016-17	66,356	0.3%	57,861	87.2%	573	0.9%	7,922	11.9%
2017-18	65,670	-1.0%	57,174	87.1%	800	1.2%	7,696	11.7%
2018-19	66,025	0.5%	56,720	85.9%	1,335	2.0%	7,970	12.1%

The data used for this report was extracted by Strategic Technology Solutions (STS), a division within the Tennessee Department of Finance & Administration, from the Tennessee Offender management Information System (TOMIS) and summarized by Decision Support: Research & Planning of the Tennessee Department of Correction.

**PAROLE GRANT RATES IN TENNESSEE
FISCAL YEARS 2009/10 - 2019/20**

	TOTAL HEARINGS	PAROLE GRANTED	% OF TOTAL	PAROLE DENIED	% OF TOTAL	PAROLE DENIED/WAIVED	% OF TOTAL	CONT.	% OF TOTAL	CONT./WAIVED	% OF TOTAL
FY TOTALS											
2009/2010	13,986	5214	37.3%	6928	49.5%	663	4.7%	832	5.9%	349	2.5%
2010/2011	14,231	4754	33.4%	7407	52.0%	841	5.9%	791	5.6%	438	3.1%
2011/2012	15,148	6127	40.4%	6994	46.2%	736	4.9%	813	5.4%	478	3.2%
2012/2013	14,452	5627	38.9%	6870	47.5%	640	4.4%	797	5.5%	518	3.6%
2013/2014	13,721	5009	36.5%	6824	49.7%	665	4.8%	741	5.4%	482	3.5%
2014/2015	13,809	4532	32.8%	7386	53.5%	640	4.6%	768	5.6%	483	3.5%
2015/2016	13,387	3821	28.5%	7596	56.7%	663	5.0%	762	5.7%	545	4.1%
2016/2017	13,776	3197	23.2%	8446	61.3%	632	4.6%	920	6.7%	581	4.2%
2017/2018	14,054	3335	23.7%	8282	59.6%	723	5.1%	1050	7.5%	563	4.0%

2018/2019

JULY	1,258	237	18.8%	810	64.4%	77	6.1%	83	6.6%	51	4.1%
AUGUST	1,527	287	18.8%	979	64.1%	100	6.5%	93	6.1%	68	4.5%
SEPTEMBER	1,232	248	20.1%	785	63.7%	59	4.8%	80	6.5%	60	4.9%
OCTOBER	1,452	280	19.3%	933	64.3%	72	5.0%	99	6.8%	68	4.7%
NOVEMBER	876	190	21.7%	555	63.4%	44	5.0%	57	6.5%	30	3.4%
DECEMBER	1,038	178	17.1%	680	65.5%	62	6.0%	70	6.7%	48	4.6%
JANUARY	1,149	258	22.5%	692	60.2%	72	6.3%	72	6.3%	55	4.8%
FEBRUARY	1,251	301	24.1%	687	54.9%	93	7.4%	108	8.6%	62	5.0%
MARCH	1,022	291	28.5%	555	54.3%	49	4.8%	83	8.1%	44	4.3%
APRIL	1,004	354	35.3%	479	47.7%	54	5.4%	78	7.8%	39	3.9%
MAY	1,286	441	34.3%	600	46.7%	62	4.8%	99	7.7%	84	6.5%
JUNE	1,271	490	38.6%	512	40.3%	18	1.4%	171	13.5%	80	6.3%
TOTAL	14,366	3,555	24.7%	8,267	57.5%	762	5.3%	1,093	7.6%	689	4.8%

2019/2020

JULY	1,239	493	39.8%	491	39.6%	22	1.8%	119	9.6%	114	9.2%
AUGUST	1,300	524	40.3%	456	35.1%	33	2.5%	164	12.6%	123	9.5%
SEPTEMBER	1,295	496	38.3%	538	41.5%	23	1.8%	122	9.4%	116	9.0%
OCTOBER	1,389	535	38.5%	568	40.9%	18	1.3%	152	10.9%	116	8.4%
NOVEMBER	1,122	431	38.4%	462	41.2%	30	2.7%	122	10.9%	77	6.9%
DECEMBER	986	369	37.4%	427	43.3%	18	1.8%	119	12.1%	53	5.4%
JANUARY	1,199	425	35.4%	544	45.4%	45	3.8%	121	10.1%	64	5.3%
FEBRUARY	1,110	399	35.9%	496	44.7%	31	2.8%	110	9.9%	74	6.7%
MARCH											
APRIL											
MAY											
JUNE											
TOTAL	9,640	3,672	38.1%	3,982	41.3%	220	2.3%	1,029	10.7%	737	7.6%
2017/2018											

Parole statistics are incomplete because all data are not received by TDOC immediately after inmates are paroled; therefore, the numbers for any given month may be different from the previous month's report.

The data for this report was extracted by Strategic Technology Solutions (STS), a division within the Tennessee Department of Finance & Administration, from the Tennessee Offender Management Information System (TOMIS) and summarized by Decision Support: Research & Planning of the Tennessee Department of Correction.

**PAROLE POPULATIONS
FISCAL YEARS 2012/13 - 2019/20**

	AVERAGE MONTHLY POPULATION	ANNUAL CHANGE	PERCENT CHANGE
2012/2013	13,324	576	4.5%
2013/2014	13,738	414	3.1%
2014/2015	13,664	-74	-0.5%
2015/2016	13,025	-639	-4.7%
2016/2017	12,066	-959	-7.4%

2017/2018

	ACTIVE POPULATION	MONTHLY CHANGE	PERCENT CHANGE
JULY	11,553	-187	-1.6%
AUGUST	11,525	-28	-0.2%
SEPTEMBER	11,435	-90	-0.8%
OCTOBER	11,374	-61	-0.5%
NOVEMBER	11,322	-52	-0.5%
DECEMBER	11,355	33	0.3%
JANUARY	11,361	6	0.1%
FEBRUARY	11,412	51	0.4%
MARCH	11,405	-7	-0.1%
APRIL	11,381	-24	-0.2%
MAY	11,315	-66	-0.6%
JUNE	11,231	-84	-0.7%
AVERAGE	11,389		

2018/2019

	ACTIVE POPULATION	MONTHLY CHANGE	PERCENT CHANGE
JULY	11,122	-109	-1.0%
AUGUST	11,041	-81	-0.7%
SEPTEMBER	10,980	-61	-0.6%
OCTOBER	10,884	-96	-0.9%
NOVEMBER	10,914	30	0.3%
DECEMBER	10,851	-63	-0.6%
JANUARY	10,688	-163	-1.5%
FEBRUARY	10,609	-79	-0.7%
MARCH	10,550	-59	-0.6%
APRIL	10,555	5	0.0%
MAY	10,511	-44	-0.4%
JUNE	10,495	-16	-0.2%
AVERAGE	10,767		

2019/2020

	ACTIVE POPULATION	MONTHLY CHANGE	PERCENT CHANGE
JULY	10,512	17	0.2%
AUGUST	10,621	109	1.0%
SEPTEMBER	10,728	107	1.0%
OCTOBER	10,848	120	1.1%
NOVEMBER	11,038	190	1.8%
DECEMBER	11,210	172	1.6%
JANUARY	11,309	99	0.9%
FEBRUARY	11,400	91	0.8%
MARCH			
APRIL			
MAY			
JUNE			
AVERAGE	10,958		

The data used for this report was extracted by Strategic Technology Solutions (STS), a division within the Tennessee Department of Finance & Administration, from the Tennessee Offender Management Information System (TOMIS) and summarized by Decision Support: Research & Planning of the Tennessee Department of Correction.

**PAROLE ADMISSIONS / RELEASES
FISCAL YEARS 2012/13 - 2019/20**

	TOTAL ANNUAL				ADMISSIONS to RELEASES RATIO*
	PAROLE ADMISSIONS	PERCENT CHANGE	PAROLE RELEASES	PERCENT CHANGE	
2012/2013	6,034		4,904		1.23
2013/2014	5,553	-8.0%	5,116	4.3%	1.09
2014/2015	4,971	-10.5%	4,925	-3.7%	1.01
2015/2016	4,403	-11.4%	4,847	-1.6%	0.91
2016/2017	3,572	-18.9%	4,344	-10.4%	0.82
2017/2018	3,833	7.3%	4,064	-6.4%	0.94

					ADMISSIONS to RELEASES RATIO*
	PAROLE ADMISSIONS	PERCENT CHANGE	PAROLE RELEASES	PERCENT CHANGE	
2018/2019					
JULY	260	-9.4%	306	-7.6%	0.85
AUGUST	312	20.0%	383	25.2%	0.81
SEPTEMBER	231	-26.0%	322	-15.9%	0.72
OCTOBER	295	27.7%	313	-2.8%	0.94
NOVEMBER	297	0.7%	301	-3.8%	0.99
DECEMBER	267	-10.1%	291	-3.3%	0.92
JANUARY	210	-21.3%	329	13.1%	0.64
FEBRUARY	254	21.0%	281	-14.6%	0.90
MARCH	288	13.4%	294	4.6%	0.98
APRIL	284	-1.4%	284	-3.4%	1.00
MAY	270	-4.9%	293	3.2%	0.92
JUNE	259	-4.1%	284	-3.1%	0.91
TOTAL	3,227		3,681		0.88

2019/2020					
JULY	380	46.7%	302	6.3%	1.26
AUGUST	334	-12.1%	262	-13.2%	1.27
SEPTEMBER	353	5.7%	250	-4.6%	1.41
OCTOBER	442	25.2%	285	14.0%	1.55
NOVEMBER	412	-6.8%	244	-14.4%	1.69
DECEMBER	474	15.0%	242	-0.8%	1.96
JANUARY	400	-15.6%	279	15.3%	1.43
FEBRUARY	375	-6.3%	209	-25.1%	1.79
MARCH					
APRIL					
MAY					
JUNE					
TOTAL	3,170		2,073		1.53

***Proportion of monthly admissions to monthly releases**

The data used for this report was extracted by Strategic Technology Solutions (STS), a division within the Tennessee Department of Finance & Administration, from the Tennessee Offender Management Information System (TOMIS) and summarized by Decision Support: Research & Planning of the Tennessee Department of Correction.

**PROBATION ADMISSIONS / RELEASES
FISCAL YEARS 2015/16 - 2019/20**

	TOTAL ANNUAL				ADMISSIONS to RELEASES RATIO*
	PROBATION ADMISSIONS	PERCENT CHANGE	PROBATION RELEASES	PERCENT CHANGE	
2015/2016	18,900	n/a	18,688	n/a	1.01
2016/2017	19,035	0.7%	18,504	-1.0%	2.01
2017/2018	19,521	2.6%	18,890	2.1%	1.03

	PROBATION ADMISSIONS	PERCENT CHANGE	PROBATION RELEASES	PERCENT CHANGE	ADMISSIONS to RELEASES RATIO*
2018/2019					
JULY	1,642	4.7%	1,632	16.0%	1.01
AUGUST	1,851	12.7%	1,697	4.0%	1.09
SEPTEMBER	1,636	-11.6%	1,598	-5.8%	1.02
OCTOBER	1,597	-2.4%	1,630	2.0%	0.98
NOVEMBER	1,705	6.8%	1,670	2.5%	1.02
DECEMBER	1,355	-20.5%	1,235	-26.0%	1.10
JANUARY	1,737	28.2%	1,562	26.5%	1.11
FEBRUARY	1,473	-15.2%	1,486	-4.9%	0.99
MARCH	1,587	7.7%	1,607	8.1%	0.99
APRIL	1,579	-0.5%	1,626	1.2%	0.97
MAY	1,757	11.3%	1,624	-0.1%	1.08
JUNE	1,469	-16.4%	1,334	-17.9%	1.10
TOTAL	19,388		18,701		1.04

2019/2020					
JULY	1,679	14.3%	1,621	21.5%	1.04
AUGUST	1,747	4.1%	1,580	-2.5%	1.11
SEPTEMBER	1,565	-10.4%	1,457	-7.8%	1.07
OCTOBER	1,627	4.0%	1,464	0.5%	1.11
NOVEMBER	1,596	-1.9%	1,428	-2.5%	1.12
DECEMBER	1,433	-10.2%	1,228	-14.0%	1.17
JANUARY	1,648	15.0%	1,494	21.7%	1.10
FEBRUARY	1,433	-13.0%	1,335	-10.6%	1.07
MARCH					
APRIL					
MAY					
JUNE					
TOTAL	12,728		11,607		1.10

**Proportion of monthly admissions to monthly releases*

The data used for this report was extracted by Strategic Technology Solutions (STS), a division within the Tennessee Department of Finance & Administration, from the Tennessee Offender Management Information System (TOMIS) and summarized by Decision Support: Research & Planning of the Tennessee Department of Correction.

**COMMUNITY CORRECTIONS ADMISSIONS / RELEASES
FISCAL YEARS 2015/16 - 2019/20**

	TOTAL ANNUAL				ADMISSIONS to RELEASES RATIO*
	COMM CORR ADMISSIONS	PERCENT CHANGE	COMM CORR RELEASES	PERCENT CHANGE	
2015/2016	4,055	n/a	2,603	n/a	1.01
2016/2017	4,287	5.7%	2,754	5.8%	2.01
2017/2018	4,192	-2.2%	2,579	-6.4%	1.63

	TOTAL ANNUAL				ADMISSIONS to RELEASES RATIO*
	COMM CORR ADMISSIONS	PERCENT CHANGE	COMM CORR RELEASES	PERCENT CHANGE	
2018/2019					
JULY	373	15.1%	225	17.2%	1.66
AUGUST	414	11.0%	222	-1.3%	1.86
SEPTEMBER	379	-8.5%	176	-20.7%	2.15
OCTOBER	358	-5.5%	203	15.3%	1.76
NOVEMBER	323	-9.8%	183	-9.9%	1.77
DECEMBER	336	4.0%	167	-8.7%	2.01
JANUARY	344	2.4%	167	0.0%	2.06
FEBRUARY	327	-4.9%	186	11.4%	1.76
MARCH	322	-1.5%	205	10.2%	1.57
APRIL	361	12.1%	227	10.7%	1.59
MAY	308	-14.7%	221	-2.6%	1.39
JUNE	248	-19.5%	186	-15.8%	1.33
TOTAL	4,093		2,368		1.73

2019/2020					
JULY	358	44.4%	211	13.4%	1.70
AUGUST	324	-9.5%	212	0.5%	1.53
SEPTEMBER	307	-5.2%	231	9.0%	1.33
OCTOBER	277	-9.8%	166	-28.1%	1.67
NOVEMBER	345	24.5%	202	21.7%	1.71
DECEMBER	291	-15.7%	166	-17.8%	1.75
JANUARY	311	6.9%	180	8.4%	1.73
FEBRUARY	294	-5.5%	170	-5.6%	1.73
MARCH					
APRIL					
MAY					
JUNE					
TOTAL	2,507		1,538		1.63

***Proportion of monthly admissions to monthly releases**

The data used for this report was extracted by Strategic Technology Solutions (STS), a division within the Tennessee Department of Finance & Administration, from the Tennessee Offender Management Information System (TOMIS) and summarized by Decision Support: Research & Planning of the Tennessee Department of Correction.

FELON POPULATION UPDATE USER'S GUIDE

Incarcerated Population

TDOC Backup: Felons sentenced to TDOC custody and held in local jails while awaiting transfer to a TDOC institution.

Locally Sentenced: Convicted felons sentenced to serve their time in a local jail. As felony offenders, these persons are under TDOC jurisdiction.

Other Convicted Felons: Convicted felons awaiting sentencing or not yet ready for transfer to TDOC because of other pending charges. Includes technical violators awaiting probable cause/revocation/recission hearing or adjudication of pending charges.

Convicted Misdemeanants: Inmates serving time because of a misdemeanor conviction.

Total Pre-Trial Detainees: Includes inmates charged with either a felony or a misdemeanor but not yet convicted.

Others: Inmates held in local facilities for federal crimes, city ordinances, etc.

Community Corrections: A grant program created in 1985 as an alternative to incarceration. Programs are developed based on the individual needs of the area served.

Admissions

New Commits: Refers to any person convicted of a felony sentenced to TDOC, but who is not on probation or parole. This may include persons who had prior incarcerations.

Violators Returned: Refers to commitment of felons on technical violations of the conditions of their parole or probation, or community correction terms.

Releases

Parole: Felons originally sentenced to an incarceration period and released to serve the remainder of their sentence under supervision.

Probation-Community Correction: Usually non-violent felons sentenced to serve a split sentence; a short jail or prison term and the remainder under state supervision.

General Notes

Backup: All offenders sentenced to TDOC custody are counted as admissions. Some offenders are held in backup at a local jail while awaiting transfer to a TDOC facility. This is due to lack of room for all offenders in TDOC facilities. Offenders in backup can be released for a number of reasons before they are transferred to TDOC. Inmates released from Backup to a TDOC facility are not counted as releases.

Primary Offense: As of July 2000, offenses are categorized according to the Tennessee Incident Based Reporting System (TIBRS) which is based on the FBI's National Incident Based Reporting System (NIBRS). This system of reporting is an attempt to standardize categorical offense reporting across criminal justice agencies. For more detail on how TCA code is categorized according to the TIBRS system, see the TBI website at http://www.tbi.tn.gov/tn_crime_stats/tibrs_reported.shtml or the TDOC Research Brief, "Assessing the Impact of the TIBRS on TDOC Criminal Offense Reporting."