



Exploring social aspects of palliative care

Kelly, N., Graham-Wisener, L., & Kernohan, W. G. (2023). *Exploring social aspects of palliative care*. Poster session presented at Palliative Care Research Forum Northern Ireland, Belfast, Northern Ireland.

[Link to publication record in Ulster University Research Portal](#)

Publication Status:

Published (in print/issue): 12/09/2023

Document Version

Other version

General rights

Copyright for the publications made accessible via Ulster University's Research Portal is retained by the author(s) and / or other copyright owners and it is a condition of accessing these publications that users recognise and abide by the legal requirements associated with these rights.

Take down policy

The Research Portal is Ulster University's institutional repository that provides access to Ulster's research outputs. Every effort has been made to ensure that content in the Research Portal does not infringe any person's rights, or applicable UK laws. If you discover content in the Research Portal that you believe breaches copyright or violates any law, please contact pure-support@ulster.ac.uk.

Exploring social aspects of palliative care

Mrs. Naomi Kelly¹, Dr. Lisa Graham-Wisener² and W. George Kernohan¹
(1) Ulster University, (2) Queen's University Belfast

Background

- For more than 20 years, people who are dying, and their families or carers, have experienced isolation, exclusion from social circles and increased distance from their local communities (McLoughlin, et al., 2015)

Objectives

- This study aimed to establish an understanding of the current social needs of people in receipt of palliative care, living in their own home, how their social needs have changed due to advancing illness and how their needs are currently met..

Methods

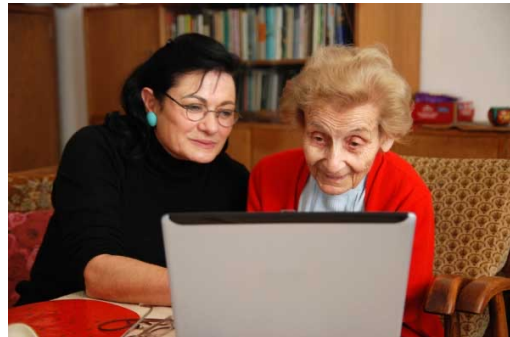
- A qualitative design was devised using semi-structured interviews to explore and generate understanding. Purposeful sampling was used: participants were identified by staff employed by a hospice based in Northern Ireland.



Reference
McLoughlin, K., Rhatigan, J., McGilloway, S. et al. INSPIRE (INvestigating Social and Practical support at the End of life): Pilot randomised trial of a community social and practical support intervention for adults with life-limiting illness. *BMC Palliat Care* 14, 65 (2015). <https://doi.org/10.1186/s12904-015-0060-9>

Results

Seven one-to-one interviews were conducted over the course of the study. Findings show, 'social support', is an unfamiliar term which is broad and ambiguous. Types of support, how it is accessed and valued varied. Difficulties maintaining social contact were identified along with associated losses and a desire to avoid burdening others. Self-management strategies were used to help overcome barriers and coping through difficult times. Availability and accessibility of support when needed was important, along with a need for information and appropriate application for additional support when required



Conclusions

- Social support is varied and has specific individual meaning and weighting depending on a range of circumstances.
- In view of progressive financial restraints on services and societal changes there is a need for further research to inform needs assessment and establishment of the most appropriate mechanisms to meet the social support needs of those in receipt of palliative care.

This research work met a requirement for the award of MSc (Palliative Care) at Ulster University achieved by Naomi Kelly. The authors acknowledge support and assistance of Marie Curie Belfast

There are no Conflicts of Interest with regard to this study.

