


REVIEW ARTICLE

Open Access



# In Vivo Strain Patterns in the Achilles Tendon During Dynamic Activities: A Comprehensive Survey of the Literature

Naomi C. Adam<sup>1</sup>, Colin R. Smith<sup>1</sup>, Walter Herzog<sup>2</sup>, Andrew A. Amis<sup>3</sup>, Adamantios Arampatzis<sup>4</sup> and William R. Taylor<sup>1\*</sup> 

## Abstract

Achilles' tendon (AT) injuries such as ruptures and tendinopathies have experienced a dramatic rise in the mid-to older-aged population. Given that the AT plays a key role at all stages of locomotion, unsuccessful rehabilitation after injury often leads to long-term, deleterious health consequences. Understanding healthy in vivo strains as well as the complex muscle–tendon unit interactions will improve access to the underlying aetiology of injuries and how their functionality can be effectively restored post-injury. The goals of this survey of the literature with a systematic search were to provide a benchmark of healthy AT strains measured in vivo during functional activities and identify the sources of variability observed in the results. Two databases were searched, and all articles that provided measured in vivo peak strains or the change in strain with respect to time were included. In total, 107 articles that reported subjects over the age of 18 years with no prior AT injury and measured while performing functional activities such as voluntary contractions, walking, running, jumping, or jump landing were included in this review. In general, unclear anatomical definitions of the sub-tendon and aponeurosis structures have led to considerable confusion in the literature. MRI, ultrasound, and motion capture were the predominant approaches, sometimes coupled with modelling. The measured peak strains increased from 4% to over 10% from contractions, to walking, running, and jumping, in that order. Importantly, measured AT strains were heavily dependent on measurement location, measurement method, measurement protocol, individual AT geometry, and mechanical properties, as well as instantaneous kinematics and kinetics of the studied activity. Through a comprehensive review of approaches and results, this survey of the literature therefore converges to a united terminology of the structures and their common underlying characteristics and presents the state-of-knowledge on their functional strain patterns.

**Keywords** Achilles tendon, Tendon strain, In vivo measurement, Dynamic activities, Aponeurosis, Sub-tendon

\*Correspondence:

William R. Taylor

bt@ethz.ch

Full list of author information is available at the end of the article



© The Author(s) 2023. **Open Access** This article is licensed under a Creative Commons Attribution 4.0 International License, which permits use, sharing, adaptation, distribution and reproduction in any medium or format, as long as you give appropriate credit to the original author(s) and the source, provide a link to the Creative Commons licence, and indicate if changes were made. The images or other third party material in this article are included in the article's Creative Commons licence, unless indicated otherwise in a credit line to the material. If material is not included in the article's Creative Commons licence and your intended use is not permitted by statutory regulation or exceeds the permitted use, you will need to obtain permission directly from the copyright holder. To view a copy of this licence, visit <http://creativecommons.org/licenses/by/4.0/>.

## Key Points

- This comprehensive review identifies the inconsistencies of anatomical definitions of Achilles tendon sub-structures and provides guidelines to standardize definitions and measurements.
- The 107 included articles have mostly studied voluntary contractions as an activity and the medial gastrocnemius sub-tendon structure, but strains in the other sub-structures and during functional activities remain less clear.
- Critically, we demonstrate that the large range of strain results originates from unclear anatomical definitions, measurement methods, and activity-specific loading conditions.

## Introduction

The Achilles tendon (AT) is the largest tendon in the human body. It is a key passive mechanical structure that stores, transmits, and releases energy to enable upright standing and dynamic movements. It can withstand forces of up to 8–10 times bodyweight during sprinting [1] and perhaps consequently is also one of the most frequently injured tendons [2].

The most common pathologies are tendinopathy and rupture [3], which almost exclusively originate from exercise, as opposed to an underlying condition (2%) [3, 4]. Tendinopathies originate from chronic overloading, whereas ruptures usually take place after acute trauma [5]. Tendinopathy is characterized by pain and swelling that hinder movement [3] and that arise from excessive overloading from strenuous training regimens. The AT physiological response to frequent overloading involves collagen degeneration and sheath inflammation [6]. The main aetiology of AT ruptures, on the other hand, is an acute and high tension during a sudden movement [4], with or without prior degenerative changes. Indeed, some AT rupture sites show poor vascular supply or disorganized collagen fibres [7]. In that case, a sedentary lifestyle is often thought to cause these changes [8]. AT disorders can occur across the lifespan, but both injuries are most prevalent in middle-aged recreational and competitive male athletes [9]. Tendinopathies make up about 60% of all AT-related disorders [3] and are often diagnosed in, for example, track and field, tennis, volleyball, and soccer athletes, extending up to around 8% of annual incidence in top-level runners [3, 10]. Although the typical patient profile for AT rupture is the middle-aged “weekend warrior”, ruptures also occur at the elite level during gymnastics, basketball, or American football [11]. The incidence of AT injuries has steadily increased over recent decades [3, 12], currently affecting 2 in every 1000

people, indicating that AT pathologies are an important societal healthcare issue.

Recovering from an AT rupture can take up to a year or more and costs some US\$14,000 for operative and conservative treatments alone [13]. Furthermore, patients recovering from AT rupture and tendinopathies frequently experience a permanent reduction in functional task performance, specifically a reduction in heel rise height and plantarflexion torque [14–16], often accompanied by a variety of associated comorbidities and substantially reduced quality of life [17].

To address these issues, a comprehensive understanding of the *in vivo* mechanical function of the AT during dynamic activities could provide important insights into optimal physiological function of the tissue, the effects of training programs [28, 29], understanding injury mechanisms, and improving surgical repair techniques and rehabilitation protocols.

AT strain, the elongation of the tendon relative to its slack length provides a quantifiable metric to investigate dynamic AT function within healthy and pathologic populations. *In vivo* AT strain measurement enables an understanding of the role of the AT in triceps surae muscle tendon unit (MTU) function through energy storage, release, and dissipation. *In vivo* AT strain measurements have recently gained traction as the measurement methods have become more tailored to dynamic activities. Even though MRI had already been used to study tissue strain, strain gauges, ultrasound and motion capture coupled with modelling have all gained traction as tools for accessing *in vivo* strain. Studying the global AT behaviour has enabled important insights into *in vivo* MTU function, and knowledge of AT strain and force patterns has helped establish boundary conditions for modelling or guiding *ex vivo* experiments [18]. Studying AT behaviour also allows an estimation of energy storage and release during movement, and absorbing energy during landing [31], which are key interests in sport science. Since AT loading and strains are thought to be greatest during jumping and landing, these activities present a high risk of AT rupture.

Anatomical studies have demonstrated that the AT is comprised of three twisting sub-tendons originating from the gastrocnemii and soleus that exhibit non-uniform strain patterns [19]. While the anatomical definitions of these structures remain diverse, understanding their local AT strains during dynamic activities could have great implications. Firstly, differences in AT spatial strain uniformity are known to occur between healthy and pathologic populations [20], where characterizing local strain patterns might help track how MTU function adapts with pathology. Furthermore, in the case of AT ruptures, the tear almost always occurs at the same

location, two to four centimetres above the calcaneal insertion [21]. Here, calcaneal valgus and varus malalignments are hypothesized to be factors that contribute to rupture during running, as they could induce extra shear loading (forces orthogonal to the long axis of the structure) on the AT fibres [3]. Since strain magnitude and strain rate (how fast the tendon stretches) are two known predictors of tendon failure [22], characterizing the AT local strain patterns in vivo could shed light on its associated injury mechanisms. Finally, strain applied to tendons in vitro has been shown to result in collagen adaptation [23] and tissue remodelling. Indeed, an applied strain range based around 6% has led to anabolic collagen adaptations in vitro in rats [24]. Similarly, in humans, in vivo plantarflexion training at 5% strain magnitude showed an increase in stiffness of the AT [25], but the extent to which such adaptation promotes the cascade of healing processes is not fully understood [26]. Knowledge of the relationships between global and local strain patterns could therefore enhance our understanding of anabolic remodelling at specific AT-injured sites. However, measuring non-uniform strain patterns in humans during in vivo activities remains challenging because of the inherent limitations of measurement methods and the complex AT architecture. While characterizing global and local strain patterns of the AT has a great fundamental and applied potential, identifying where error sources influence strain results is critically important.

This study therefore builds on previous summaries of AT tissue function [27, 28] to review in vivo measurements of the healthy human AT to provide the current state of knowledge regarding functional elongation patterns during dynamic activities. Thus, our goal is to (1) unify the anatomical definitions of the AT sub-structures to provide a common consensus, (2) review the peak values and their ranges, as well as temporal and spatial variability in AT strain patterns during functional activities, and (3) provide an overview of the key factors that govern AT strains. Based on our comprehensive survey of the literature, we provide best practices to improve the quality of AT strain measurements.

## Review Methods

### Rationale

The goal of this review was to provide an extensive understanding of the strain patterns experienced by the human Achilles tendon during dynamic activities in healthy populations. Observations made in the literature were based on several metrics, mostly elongation (difference between the tendon instantaneous length and a reference length) and strain (defined as  $\varepsilon(\%) = \frac{L-L_0}{L_0} \times 100$ , where  $L_0$  is the AT slack length and  $L$  is its instantaneous length). However, one issue that makes quantification of strain

in musculoskeletal structures (and particularly the AT) extremely difficult is determination of the slack length. As a result,  $L_0$  is often assigned a reference length based on an arbitrarily selected pose or posture where the muscles would ideally be inactive. When the reference length is different from the slack length, the investigated strain actually becomes relative elongation. Additional characteristics of time-varying strain throughout different activities, such as tendon recoil (difference between the tendon's maximal and shortest length within an activity cycle), longitudinal, transverse, or antero-posterior displacements, are rarely reported but could add considerable understanding to the biomechanical characteristics of this structure. Overall, two types of valid measurements are found in the literature: strain results, which are normalized and can be used for comparison, and other metrics. We therefore included in our search two types of results based on metrics: quantitative results of strain, and qualitative results, which entailed insightful observations and other metrics. Additionally, dynamic activities of interest comprised varied movements either performed during daily activities or during exercise. These included voluntary contractions, walking, running, hopping, jumping, and landing. Voluntary contractions referred to isometric contractions whose force output was measured by a dynamometer and that were normalized to the maximal force exerted by the subject in a test trial. The voluntary contractions found in the literature ranged from 10% of the maximal exerted force to 100% (maximal voluntary contractions). Additionally, walking and running trials were included for all speeds, and for both overground and treadmill motion. Finally, several kinds of jumps or landings have been included. They entailed single- or double-legged hopping, squat, or countermovement jumping, as well as double-legged landings. The methods were also considered during the search and were required to contain at least one live or direct measurement of strain during movement. As a result, MRI, 2D or 3D ultrasound, as well as motion capture combined with modelling, was chosen. Measurement with strain gauges did not take place in human ATs and was therefore not included. Similarly, pure modelling, which did not entail live recording, was not selected.

### Systematic Search Method and Inclusion Criteria

The literature databases Scopus and PubMed were searched from database inception until 6 Dec 2021 using the EPPI-Reviewer software suite (EPPI-Reviewer4 v.4.12.2.0) based on the following search string:

“(Achilles tendon) AND (elong\* OR length OR lengthening OR length change OR strain. OR strain rate OR in vivo)”. The studied populations were adults (> 18 years old), with no history of AT-related pathology. Articles

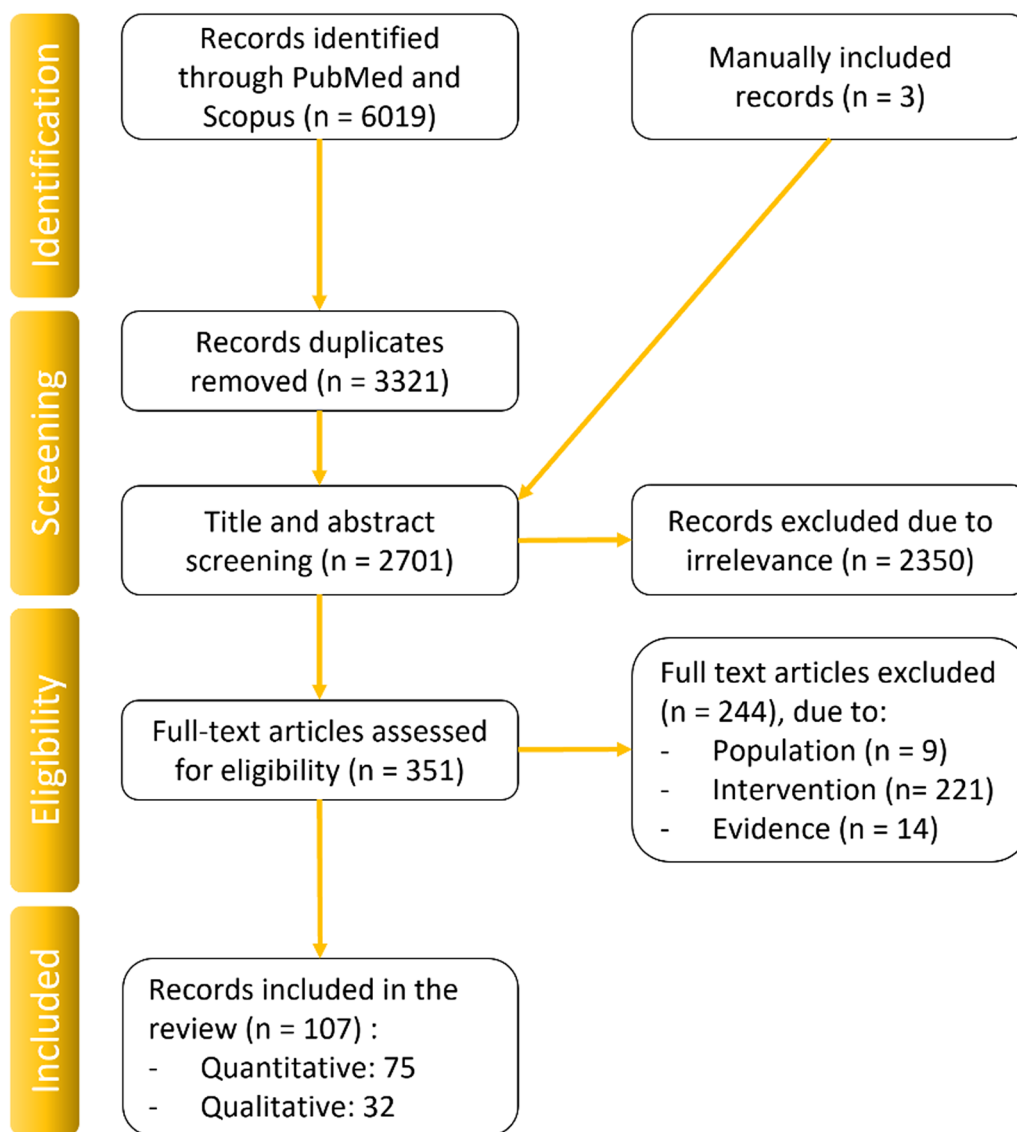
were included if they reported in vivo measurements of human AT strain during dynamic activities such as walking, running, hopping, jumping, landing, or voluntary contractions and measured with ultrasound, MRI, or motion capture coupled with modelling.

Additionally, “non-strain” or qualitative articles, meaning articles providing metrics such as displacement or relative elongation, were added if they disclosed time-varying curves or indirect insights, such as elongations. Author NCA performed the preliminary screening for exclusion based on the articles’ abstracts, before reviewing the full texts. Any uncertainty about texts for inclusion was resolved with WRT and CRS. Three further records that met the previous criteria were found in

the cited literature of the included studies and manually included. Finally, 107 articles were included in this review, which entailed 75 articles that were able to provide quantitative data on AT strain during functional activities (Fig. 1).

**Data Extraction and Collection**

In this study, we extracted peak strain values (longitudinal and transversal) reported in the included literature, either from tables or from time-varying curves. When the strain values were extracted from plots, data points were digitized from figures using WebPlotDigitizer v4.2. We also extracted and included strain values found in the discussion sections. All elongation and displacement



**Fig. 1** PRISMA diagram of the articles included in this review

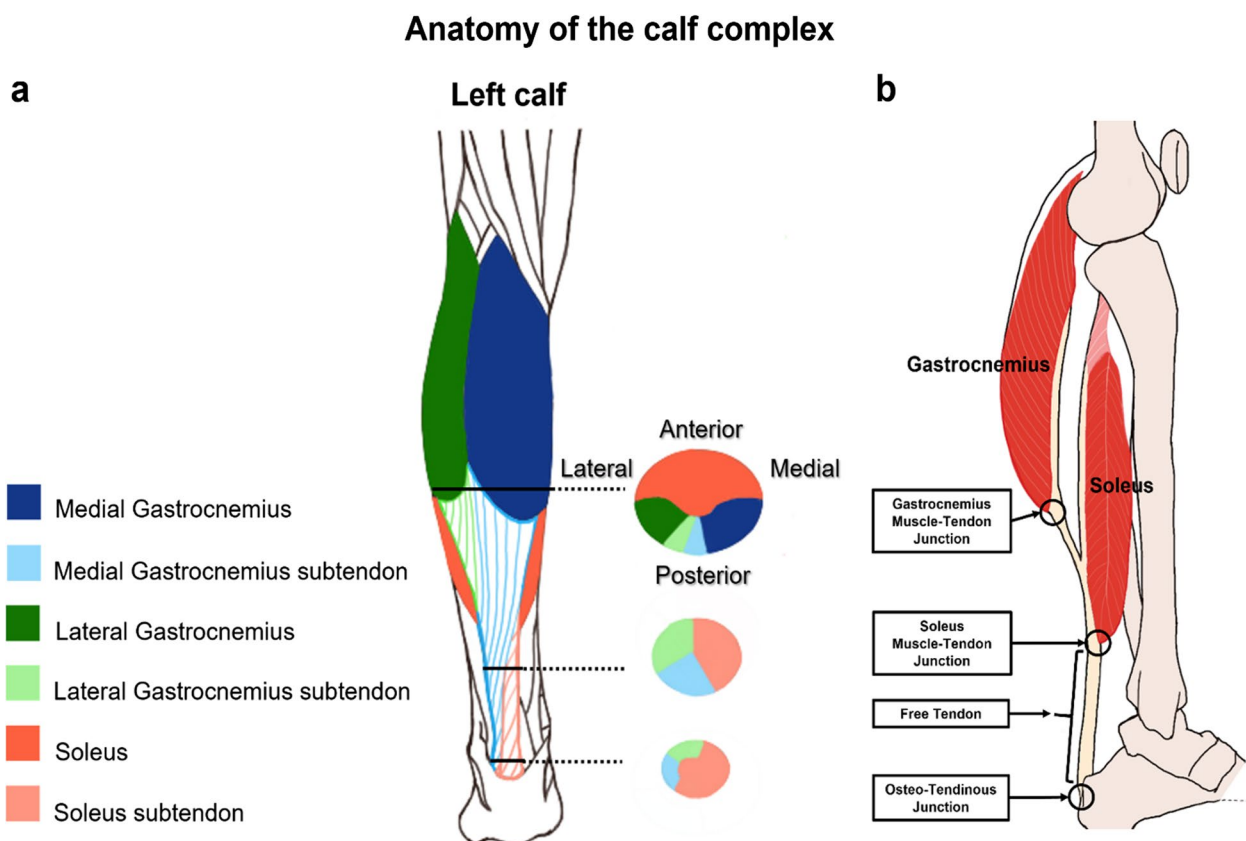
results (with or without provided reference lengths) are reported as qualitative results. Strain results where reference lengths, measurement locations, or methods were not thoroughly disclosed were also presented as qualitative results. In such cases, to provide an estimate of strain, we converted these displacement values assuming a reference length of AT and aponeuroses of 400 mm [29] (our estimated values are indicated with an asterisk in the tables). All the qualitative and quantitative results stored in tables, as well as the graphs of strains with respect to time of the dynamic activities, are to be found in the supplementary online resources. Additionally, the working principles behind each measurement method are summarized in the “Techniques for Strain Measurement” section (Additional file 1: Online Resource S1). Specifics pertaining to each measurement protocol such as the reference length definition (for strain results), the measurement location, and the activity details can be found in the results tables (Additional file 2: Online Resource S2).

## Results

### Achilles Tendon Anatomy

Understanding the variation of anatomical definitions of the AT is important for interpreting published strain results. This section aims at presenting the basics of AT anatomy (Fig. 2), common measurement challenges, as well as different definitions found in the literature. Additionally, all strain values included in this review will be presented according to convention “c” (Fig. 3) in the results and discussion sections whenever possible.

Anatomically, the AT is composed of three mechanically separate sub-tendons that originate from the medial gastrocnemius (MG), lateral gastrocnemius (LG), and the soleus muscle–tendon junctions (MTJs), which all join and insert into the calcaneus at the osteo-tendinous junction [19] (Fig. 2, panel b). The entire AT tendon, from the gastrocnemii MTJ to the osteo-tendinous junction, is on average 150 mm long (varying from 110 to 260 mm) and its medial–lateral width tapers from some 7 mm (superior) to approximately 2 mm (inferior) [30]. Although the pure-tendinous region between the osteo-tendinous junction and the soleus MTJ has been named by a few authors as the “Achilles tendon”, common consensus now



**Fig. 2** **a** Three axial cross sections of the AT sub-tendons demonstrating their natural twist [19], **b** sagittal cross section indicating common anatomic naming conventions of the triceps surae muscles and the Achilles tendon (note: spaces between soft tissues are exaggerated for graphical clarity)



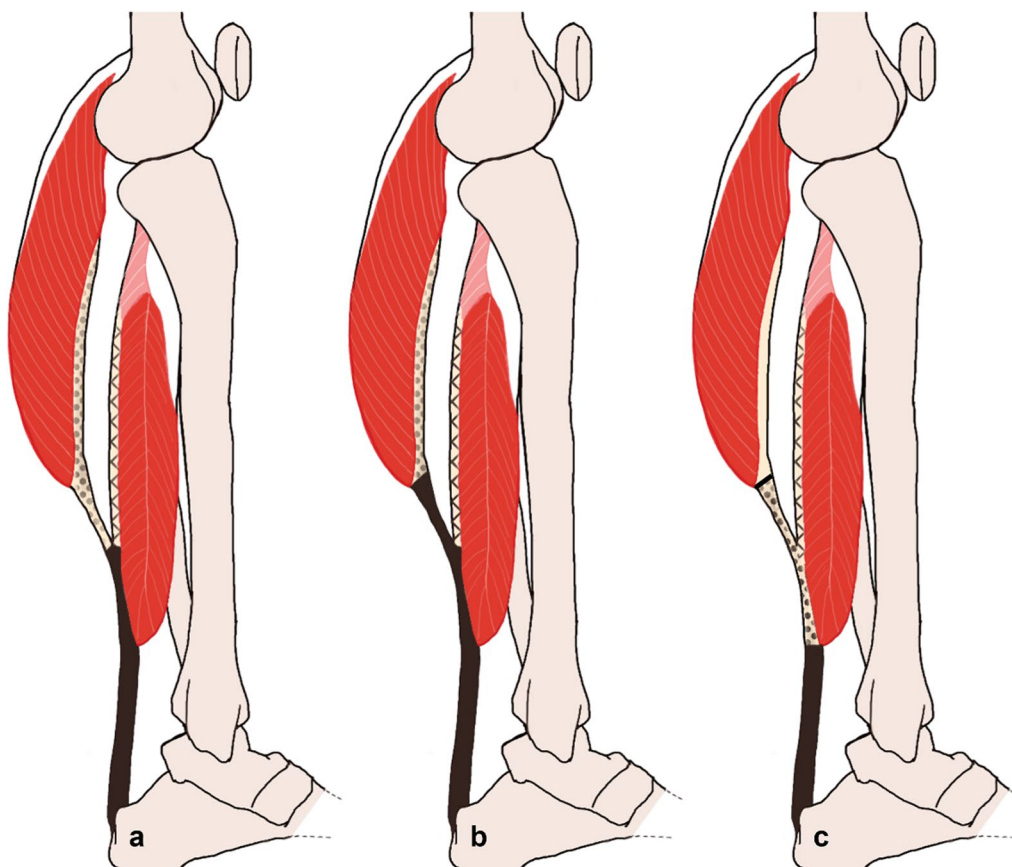
describes this region as the “free tendon” (FT) (Fig. 2, panel b).

Cadaveric studies show that the three sub-tendons rotate internally from proximal to distal leading to both gastrocnemius sub-tendons inserting into the calcaneus laterally, with the fibres originating from the soleus inserting medially [31] (Fig. 2, panel a). However, the magnitude of the twist varies from 10 to 150° across the population [32]. Moreover, the AT is the culmination of three MTUs, where each MTU consists of all the structures from a single triceps surae muscle to the distal osteo-tendinous junction. One of these structures is the aponeurosis, which links the tendon to the muscles and is defined controversially in the literature. The formal anatomical definition of the aponeurosis was established in cadavers and describes the structure as the fibrous tissue proximal to the point where the gastrocnemius MTUs and soleus separate [19] (Fig. 3a). However, because this point is difficult to identify in *in vivo* images, some authors chose to define the gastrocnemius aponeurosis as only the fibrous intra-muscular tissue proximal to

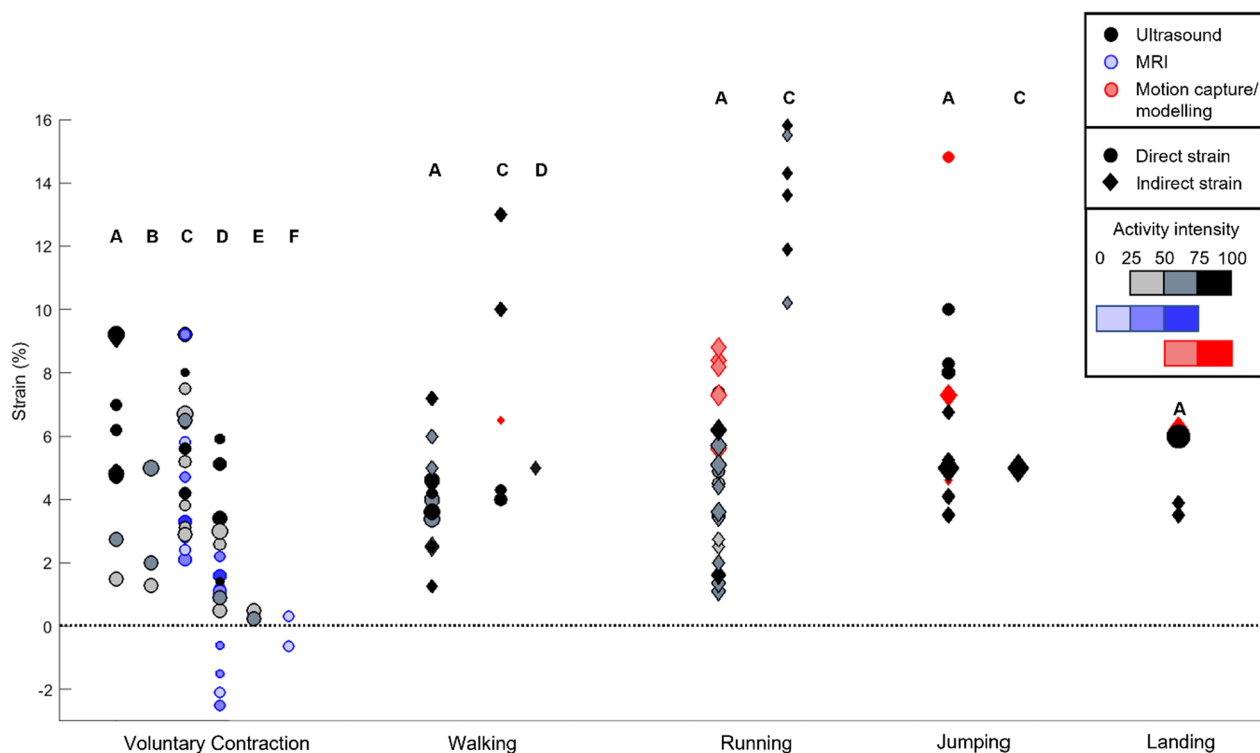
the gastrocnemius MTJ (Fig. 3b). Since the majority of AT research literature is based on ultrasound techniques that most easily locate the soleus and gastrocnemius MTJs, however, the most commonly used definition of the aponeurosis has recently become the fibrous tissue between the soleus and the gastrocnemius MTJs (Fig. 3c), even though this convention does not incorporate the proximal connective tissue along the MG muscle. Finally, for clarity, we refer to the three “sub-tendons” within this review as the structures joining the given MTJ (MG, LG, or soleus) and the calcaneus (osteotendinous junction), even though this definition does not necessarily account for the natural twist of the fibres from an anatomical perspective.

#### AT Strain Patterns during Functional Activities

The quantitative strain results, as well qualitative observations, were sorted and reported by activity. The peak values and the strain ranges, for each sub-structure when possible, were disclosed to present the current overview of the literature (Fig. 4).



**Fig. 3** Three different definitions **a–c** of the gastrocnemii aponeuroses (dotted), soleus aponeurosis (lines), and Achilles/free tendon (solid black) are found in the literature; however, in this review convention “c” was chosen because it is most commonly used (note: spaces between soft tissues are exaggerated for graphical clarity)



**Fig. 4** Peak strain results across activities: results are split by Achilles tendon location. The size of the data points is proportional to the number of participants. Colours indicate measurement methods; the filling gradient represents the speed or intensity of the activity and the shapes if the strain had been directly measured or was an indirectly obtained value. A: Medial gastrocnemius sub-tendon, B: lateral gastrocnemius sub-tendon, C: free tendon, D: medial gastrocnemius aponeurosis, E: lateral gastrocnemius aponeurosis, F: soleus aponeurosis

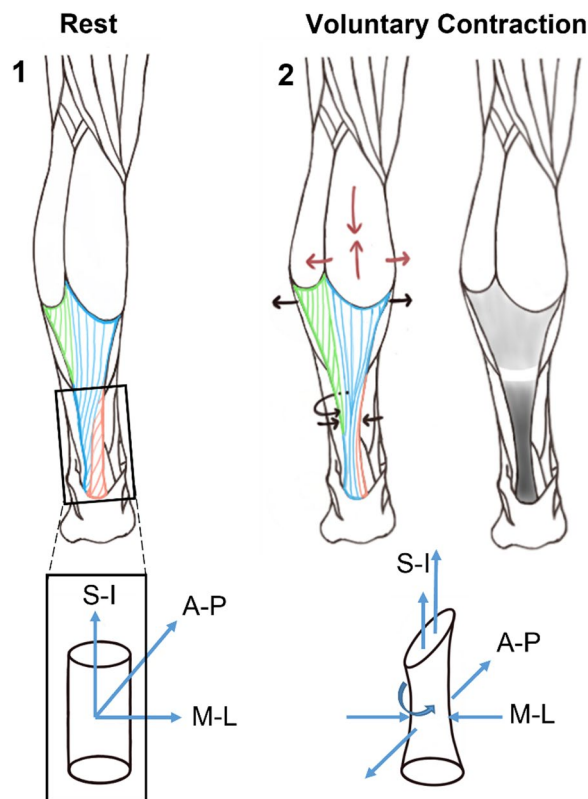
### Isometric Contraction

Maximal voluntary contraction (MVC) or submaximal voluntary contraction (VC) was the most studied activities [25, 33–99], while the MG sub-tendon (free tendon plus MG aponeurosis) structure has been most investigated. The reported peak longitudinal strain values during VCs suggest the MG sub-tendon strains by up to approximately 9.2% (Fig. 4 and Additional file 2: Online Resource S2, table MVC). The MG sub-tendon generally strained more than the LG sub-tendon [74, 81]. However, the longitudinal strain distribution along the sub-tendons is not homogeneous. For example, in the MG sub-tendon the free tendon generally exhibits larger strains than the aponeurosis [63, 67, 83, 93] and two articles report the opposite trend [37, 99].

When the free tendon alone is considered, peak strains are reported to increase linearly with respect to activation during sub-maximal contractions (up to 70%) [63, 67]. Interestingly, the longitudinal elongation is not uniform in the anterior–posterior direction, as the mid- and deep regions of the FT displace more than the superficial (posterior) region [43, 74] (Fig. 5). The longitudinal strains in the FT with VCs are associated with either a small positive [87] or, more commonly, a negative transverse strain

depending on the region [87, 92, 96] (Fig. 5, panel 2), resulting in a reduction of the cross-sectional area (average approximately 5.5%) of the free tendon [53, 68, 69]. The greatest changes were reported mid-structure [93], including a decrease of the medio-lateral width (approximately 9%) [68], but interestingly also a slight increase in the antero-posterior thickness [68, 69]. Finally, VCs result in an external rotation of the free tendon relative to the calcaneal insertion, especially in the mid-portion [68], where the rotation reduces the natural twist of the sub-tendons compared to their resting state.

In the aponeurosis, longitudinal peak strains were consistently smaller than in the FT during sub-maximal contractions, where most of the elongation is reported to occur during the first 25% of activation [63, 67], indicating a nonlinear (e.g. viscoelastic) response as opposed to the more linear behaviour of the FT. Furthermore, while the entire aponeurosis structure consistently showed a global positive longitudinal strain [57, 63, 67, 83, 86, 87, 90, 93, 100], a small shortening of the distal aponeurosis has been observed, around the interface with the soleus MTJ [57, 86, 100] (Fig. 5, panel 2). As a result, the strain distribution even within the aponeurosis is considered non-homogeneous. Here, transversal strains are



**Fig. 5** Strain patterns of the Achilles tendon during a voluntary contraction. The two cylinders represent a close-up of the free tendon at rest (panel 1) and during contraction (panel 2), assuming no change in knee and ankle joint angles. In panel 2, the red arrows indicate the shortening and bulging of the gastrocnemius muscle during contraction, while the black arrows illustrate the positive transversal strain (widening) around the gastrocnemius aponeurosis, as well as the negative transverse strain (thinning) at the free tendon. Additionally, the circular black arrow around the free tendon represents the rotation undergone during contraction. The grey scale scheme represents the magnitude of the longitudinal strain undergone by the tissue: the darker the colour, the greater the longitudinal strain. The white region around the soleus muscle tendon junction indicates no strain or even a negative longitudinal strain [86]. (S-I: superior–inferior, A-P: anterior–posterior, M-L: medio-lateral)

discussed controversially: values between 5% [83] and 9% [87] M-L thickening have been reported for the MG aponeurosis, but an M-L thinning of this region has also been observed [96]. Finally, with regard to knee joint angle, the MG aponeurosis strained more than the soleus aponeurosis when the knee was extended, but the soleus aponeurosis extended more than that of the MG when the knee was flexed at 90° [97],

### Walking

All studies assessing AT strain during walking relied on ultrasound measurement [29, 42, 101–110], with the

exception of Yamamoto [111] and Pizzolato and co-workers [112], who used motion capture-based methods. Only five studies reported direct strain values [29, 105, 106, 110, 112]. Three definitions were used for the AT reference length: length at standing [101], heel strike [105], or toe-off [107].

During walking, the tendon is minimally loaded before heel strike (Additional file 1: Online Resource S1). Thereafter, the triceps surae ramp up their contraction throughout the stance phase, which allows energy to be stored in the AT, where the peak strain (only measured in the MG sub-tendon in the literature) reaches between 4% [101] and 4.6% [29] (Additional file 2: Online Resource S2, table walking). In the last 25% of the stance phase, the tendon recoils, and the foot is pushed off the ground. Only elongation data were available for the LG sub-tendon [103, 111], which was reportedly similar to the MG [111]. Furthermore, longitudinal elongation seemed to vary regionally within the LG sub-tendon, with higher strains in the free tendon than in the aponeurosis or the whole sub-tendon [103]. A more homogeneous strain distribution was observed in the MG and FT [105] than in the LG sub-tendon. Finally, it seems unclear whether the superficial FT displaces more [103] or less [104] than the deep layer.

### Running

For studies addressing running [29, 79, 107, 113–123], the AT reference length definitions included: standing [113], heel strike [119], 20° ankle plantarflexion [106], or toe-off [120]. Strains were generally obtained using ultrasound [29, 79, 106, 107, 113, 117, 119, 120, 122, 124], but also using modelling approaches, deriving the strains from the calculated force [115].

[29, 106] (Additional file 1: Online Resource S1). The entire MG sub-tendon reaches a peak strain of up to 8.8% [123], whereas the free tendon is thought to be strained up to 15.8% [119] (Additional file 2: Online Resource S2, table running).

Regarding measurement methods, one model-based estimate of peak MG sub-tendon strain was in good agreement with ultrasound measurements: 8% [123]. However, studies that have modelled the free tendon alone resulted in similar estimates of about 8% [115] and 6% [75], but ultrasound measurements of this structure were as high as 16% [119]. Comparisons between forefoot and rearfoot running demonstrated that higher AT strains are found in forefoot running [116, 119, 125] at 10 km/h. Interestingly, this difference decreases with increasing speeds [119]. Finally, recoil values were measured for both loaded and unloaded running, as well as before and after a training program [79, 122]. Despite a similar peak strain magnitude, the recoil value was



almost two times greater during loaded running (+20% body mass added). Additionally, after a 10-week plantar-flexion training, an unexpected similar peak strain value was measured, but the tendon recoil diminished by 30% during the late stance phase.

### **Jumping and Landing**

Several kinds of jumps or landings have been analysed: single- [113, 126, 127] or double-legged hopping [128–131], squat or countermovement jumping [132–135], as well as double-legged landings [133, 136, 137]. The only data available for jumping and landing are measurements of the MG sub-tendon, reaching a peak strain between 8 [113] and 15% [128] (Fig. 5, Additional file 2: Online Resource S2, table jumping and landing and Additional file 1: Online Resource S1). The AT strain then decreases throughout the remainder of the ground contact time as it releases energy. The reference length was defined at standing [129, 134], ground contact [128], at the length corresponding to 5% of the maximal measured ground reaction force [126] or taken from the literature [132]. Additionally, different assessment methods yielded different results: all modelling studies reported strains that were lower than those measured using ultrasound. Interestingly, AT strains decreased during double-legged hopping when the jumping frequency increased [130]. Indeed, the MG sub-tendon length change accounted for 90% of the total MTU length change at 2 Hz, whereas it plummeted to 52% at 3.5 Hz. The AT strain behaviour shows two phases during landing. First, shortly after initial contact, minimal lengthening is observed [137]. Second, the AT is then strained to between 3.5% [136] and 6% [133].

### **Discussion and Consensus**

The Achilles tendon is critical for transferring load, enabling movement of the lower limbs, and storing energy to allow highly dynamic and challenging functional activities to be performed. While the structure's material properties, strain behaviour, and loading conditions have been relatively well characterised [22, 138], only limited consensus has been reached on its functional behaviour *in vivo*. In this comprehensive survey of the literature, we therefore aimed to understand the underlying reasons for the inhomogeneous outcomes and provide a clear overview and comparison of its *in vivo* anatomical and strain behaviour during various functional movements. To achieve this, *in vivo* strain data of the AT were systematically extracted and analysed from the existing literature. The complex twisted geometry of the AT, combined with its one- and two-joint origin attachments, and the variability in local strain patterns, as well as different definitions of the AT reference length across studies,

confounded direct comparisons of strain magnitudes. In addition, the measurement techniques, including ultrasound, MRI, and movement analysis/modelling, each possess inherent limitations. Overall, the highest peak strains were reported during jump take-off and running, while jump landing, walking, and isometric contractions exhibited lower peak strains (Fig. 4). Regionally within the AT, the FT shows greater longitudinal strains than the aponeuroses [63, 67, 83, 93]. Negative transverse strains are consistently reported in the FT upon triceps surae contraction [87, 92, 96]. However, both positive and negative transverse [83, 87, 96] and longitudinal strains have been observed in the aponeuroses, indicating the need for further research to comprehensively understand their behaviour. Moreover, conflicting strain patterns have been observed in the FT between the deep and superficial layers, but it remains unclear whether this is a valid difference or whether it is due to methodological limitations.

### **Impact of Measurement Methods and Protocols on Strain Result Variability**

#### **Impact of Inconsistent Anatomical Definitions**

One of the critical findings from this review is that the discrepancy between anatomical definitions of the AT and triceps surae tissues seems to be a key source of variability associated with the reported strain values. Here, the use of different definitions for the tendon aponeurosis (Fig. 2) clearly leads to the measurement of different structural components of the AT and hence results in different strain values. For example, the fibrous tissue that attaches to the soleus above the soleus MTJ would be considered the proximal section of the AT when using convention “a”, a mid-section of AT when using convention “b”, and the distal aponeurosis when using convention “c”. Similarly, the disagreement over the observation that within the MG sub-tendon the FT exhibits larger strains than the aponeurosis [63, 67, 83, 93], can be explained by a difference in anatomical definitions. These four papers used the convention “c”, whereas the two authors reporting the opposite result [37, 99] used convention “b”. To avoid comparing strain results that pertain to different structures, we therefore recommend to explicitly define the AT and aponeuroses in all future studies, as well as using the most common convention “c” where possible.

#### **Impact of the Metric Choice**

The use of strain as a metric to assess tissue functional deformation can lead to several problems. True strain is calculated with respect to tendon slack length—the greatest length before which passive tension forces rapidly increase [124]. However, the associated triceps surae

muscles' slack lengths are known to be dependent on joint angles: 20° ankle plantarflexion for the MG, 15° for the LG, and 2° for the soleus when the knee is extended [139], suggesting that AT sub-tendons have individual slack lengths. Similarly, the FT has been shown to become slack when the ankle joint passively reaches approximately 44° plantarflexion [140]. Importantly, these results suggest that the FT is nearly always elongated, and that AT strain results are most likely underestimated when common reference poses are selected: heel strike, toe off, standing, or at a given ground reaction force level. Additionally, in cases where the slack length is unknown, the reported metric necessarily becomes relative elongation rather than strain, such that the reported values are relative to the chosen reference length, rather than an absolute known value. In fact, most studies that report AT strain actually disclose relative elongations, normally as peak values along the longitudinal (superior–inferior) axis. Since the experimental and clinical assessment of true tendon slack length remains extremely challenging, it is therefore critical that authors report their AT reference lengths in order to allow at least a comparison of relative elongation between studies. Moreover, as far as possible, studies should report the conditions under which the reference length was established, including knee and ankle flexion angles. Although reporting other metrics such as elongation or displacement allows investigators to circumvent assessing slack length, any comparison against strain then becomes misleading. For example, during submaximal contractions, the LG and the MG sub-tendons exhibit a similar elongation [81], but the shorter slack length of the MG sub-tendon produces a greater strain than in the LG sub-tendon.

#### **Impact of Measurement Methods**

Each measurement method has limitations that inherently affect AT strain measurements and hence study comparisons (Additional file 1: Online Resource S1, Strain Measurement Methods section). The most commonly used assessment technique, US, is limited by fibre sliding and rotations, which confound the imaging plane and thus add measurement uncertainty, particularly during dynamic activities. Here, twisting of the MG, LG, and soleus sub-tendon fibres further challenges the ability of this 2D technique to track the structure of interest. Similarly, motion capture techniques are subject to skin tissue artefact, which is known to lead to considerable errors [106]. While some motion capture results during running and walking were consistent with US for strains in the MG sub-tendon [112, 123], the strain in the FT was underestimated by a factor of two [65]. Moreover, the strain in the MG sub-tendon during running has been reported to be as low as 1% [117]. As a result, there

is clearly still a critical need to validate results achieved through motion capture and computational modelling studies. While MRI measurements allow excellent visualisation and hence access to soft tissue elongation patterns, the technique is limited to activities that are performed within the restricted field of view of the MRI bore, such as submaximal contraction. However, during such activities, the longitudinal strain ratio between the FT and aponeurosis is known to change [67, 86], as well as the relative force contributions of the MG and LG [81]. Therefore, caution should be taken in extrapolating submaximal contraction strain patterns from MRI to functionally loaded activities with greater contraction levels. Other techniques such as the radiographic assessment of tantalum beads inserted into the AT [141] could present interesting options for further research into the tissue's functional behaviour, particularly if combined with moving fluoroscopy to access dynamic activities.

#### **Impact of Data Post-processing**

Importantly, after measurement, different post-processing approaches to calculate AT length (e.g. the straight line model [142], extraction of AT length from MTU length [132], correction for joint rotations [36], or the mitigation of soft tissue artefact when using motion capture or ultrasound [106]) all yield distinct results. Here, common assumptions such as the AT having a linear connection from the MTJ to the calcaneus are challenged by muscle bulging or the tendon becoming slack [143] and can hence significantly underestimate the reference length and introduce error into strain estimates [128].

#### **Variability of Strain Results During Dynamic Activities Different Sub-structures Present Inhomogeneous Strain Patterns**

The measured and estimated strains in the AT were highly inhomogeneous, ranging from zero (and even negative) in the MG aponeurosis to magnitudes of up to 16% in the FT during running. Compared to direct strain measurements in other animals (e.g. up to approximately 4.15% strain in pony superficial digital flexor tendon during trotting [144] and between 1 and 2% in the sheep forelimb lateral digital extensor during trotting [145]), these estimates of strain in the human AT are generally high. One of the most interesting aspects was the clear differences in AT strain patterns between the different sub-structures. In fact, it is likely that the special anatomical and structural make-up of the AT accounts for the strong strain inhomogeneity (Fig. 4), including the shortening of the aponeurosis at the soleus MTJ observed in several studies [57, 86, 100] (Fig. 5). Here, it seems likely that localised contraction of the soleus muscle, combined with widening of the muscle belly, both occurring

at the point of MTJ attachment, could indeed result in local negative longitudinal strains, even though the more global structure is being elongated. One possible contribution to this observed behaviour is the fact that aponeuroses are not mechanically in series with tendons or the contractile fibres of the muscles; rather their elongation or shortening depends on the shear and pressure forces of the muscle as well as the stiffness of the muscle itself, which varies with muscle force. Thus, elongation or strains in aponeuroses cannot provide information about the properties (stiffness, elastic modulus) of the aponeurosis since the loading conditions within the aponeurosis cannot yet be measured. However, forces in the aponeuroses are known to vary with length along the structure, with the highest forces occurring at the distal extremity (near the AT insertion) and progressively decreasing towards the proximal end (where the forces theoretically reduce to zero) [146]. Thus, local elongations of the aponeuroses are influenced by the force gradients along the length of the aponeurosis. As a result, the contribution of the aponeuroses to AT elastic energy storage is controversially discussed [64, 90, 147]. It is these arguments that have prompted some authors to suggest that assumptions regarding the aponeuroses should be entirely reconsidered [148]: the inclusion of aponeuroses as series elastic elements in MTU models tends to overestimate the amount of stored and released mechanical energy.

#### ***Consensus and Ongoing Uncertainties About the Strain Patterns During In Vivo Activities***

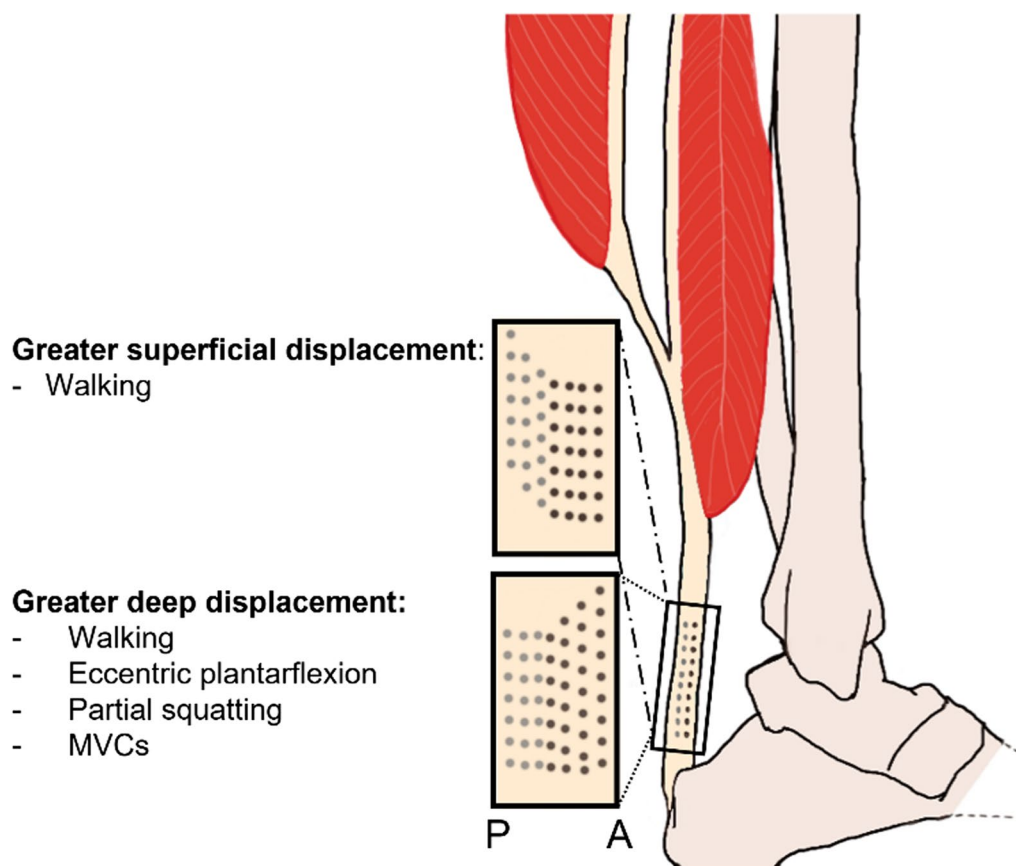
During walking and running, the MG and LG sub-tendons undergo similar elongation patterns, which are consistent with MVC measurements [37, 38], but of a lower magnitude than the FT [103, 139]. As a result, the MG and LG aponeuroses (according to convention “c,” Fig. 3) must strain less than the FT in the longitudinal plane, which has been observed in vivo [67]. However, both positive and negative transverse strains have been observed for the aponeuroses. Positive transverse strains plausibly result from the pressure exerted by the muscles bulging during contractions [41], but negative strains have also been explained by the positive Poisson’s coefficient of tendons, where positive longitudinal strains lead to negative transverse strains [12]. The strain behaviour of the aponeurosis is inconsistent among studies and difficult to measure because its mechanical properties depend on the kinematics, the location of measurement, and the muscle activation level. Here, one interesting consideration is that muscle length changes can be achieved by either shortening/lengthening or by fibre rotation (change in pennation angle). As a result, length changes in a muscle can occur without appreciable length changes

in the aponeuroses due to their medial and lateral fibres gliding relative to one another.

During walking, the three MTUs behave differently: the MG and LG muscle fascicles remain isometric or slightly shorten during the late stance phase, whereas the soleus muscle fascicles lengthen [43, 105]. Interestingly, increasing walking speed predominantly increases the activation of the gastrocnemius muscles [149] in a process that possibly leverages energy from the knee due to their two-joint nature. The strain pattern of the AT during walking resembles the energy storage patterns observed for running with the stretch during stance phase and the catapult recoil and release of energy during push-off, albeit happening more slowly because of the longer stance phase [62]. Due to methodological limitations, the distribution of local longitudinal strains within the MG or LG sub-tendons has not been well studied outside of MVCs. Some studies have, however, measured displacements within the FT during walking. Here, similar patterns to those seen during MVCs, where the deep FT elongates more than the superficial layer, have been measured [37, 63, 104], which has also been found in passive and eccentric plantarflexions [92, 150, 151] and in partial squatting [152, 153] (Fig. 6). The reasons might be that the superficial region originating from the MG is more compliant, or that tendinous fascicle sliding confounds ultrasound measurements [150]. The observation is not undisputed, however, since superficial layers of the AT elongating more than the deeper layers during walking have also been reported [102, 103].

#### ***Potential Explanations for Unexplained Strain Patterns***

What could explain the variability between MVC and walking in the change of sub-tendon patterns? Kinetic and kinematic differences could provide an answer. First, constraining the foot seems to have an influence: strain results during plantarflexion vary if the foot is constrained and unexpected shortenings have been measured when unconstrained [143]. Knee and ankle flexion angles also clearly influence tendon slack length and 3D AT moment arm [154], which can also increase with larger muscle contraction as the muscles get thicker [155]. Importantly, the knee angle also influences fascicle length of the biarticular MG and LG muscles. Indeed, during eccentric ankle plantarflexions, when the knee is flexed, the strain within the soleus sub-tendon is altered but not within the MG and LG (superficial) sub-tendons [150]. Given that EMG levels of the triceps surae muscles differ considerably between activities [154] and that their relative activation level is modulated by contraction level [96], this might lead to a preferential loading of the soleus when the shortened gastrocnemius fascicles might not be able to generate force at the very bottom of the



**Fig. 6** Sagittal cut of the free tendon showing the difference in longitudinal elongation between superficial and deep layers during several activities. The grey dots represent the superficial/gastrocnemius layers, and the black dots represent the deep/soleus layer. A and P stand for the anterior and posterior directions along the sagittal plane

force/length curve [37, 150]. Respective force optima are therefore likely to occur at different stages of the gait cycle, explaining why the soleus is thought to primarily deal with body weight support, whereas the gastrocnemius mostly contributes to propulsion [103]. Here, the locations of the gastrocnemius and the soleus attachment points likely play key roles in the local mechanics at different stages of the gait cycle. Due to their orientation, the soleus muscle generates a force vector axial with the tibia, whereas the gastrocnemius muscles create a vector pointing slightly backwards, more suitable to efficient propulsion. Finally, during walking, energy is conserved by positive muscle work throughout the lower limb [146], enabling the gastrocnemius muscles to leverage and transfer energy from the knee extensors during unconstrained movement due to their two-joint nature. These kinematic and kinetic boundary conditions might explain why different strain patterns are observed within the FT between MVCs and walking.

The role of connective tissues and energy transfer within the triceps surae MTUs is unclear. Myofascial

force transmission between muscles and tendinous connective tissues seems to distribute force within the AT [156]. The extent of these transmissions depends on muscle groups, muscle lengths, and activation levels [156]. Furthermore, the extent of tendon fascicle sliding needs to be quantified, as comparative studies indicate that this twisted rope-like behaviour might help store energy in tendons [103].

### Conclusions

From the complex interactions between AT anatomy, including its sub-tendons and aponeuroses, as well as knee and ankle joint flexion angles and uni- and biarticular muscular structures and their loading conditions, it has become clear that numerous questions remain regarding AT function in vivo. The addition of AT material properties, which is beyond the scope of this review, adds further uncertainty. However, what is clear is that the AT can no longer be considered a single homogeneous structure, but rather needs to be investigated as multiple sub-structures with complex interactions. In order



to enhance training and performance, understand injury mechanisms, as well as improve repair and rehabilitation protocols, further investigation into the individual AT sub-structures and their interactions is clearly needed. To ensure that studies can be universally compared, we strongly recommend that the locations of measurements are standardised with respect to a consistent definition of the anatomical sub-structures, together with unambiguous reporting of the reference conditions.

#### Abbreviations

A-P	Antero-posterior
AT	Achilles tendon
CSA	Cross-sectional area
FT	Free tendon
LG	Lateral gastrocnemius
MG	Medial gastrocnemius
M-L	Medio-lateral
MRI	Magnetic resonance imaging
MTJ	Muscle-tendon junction
MTU	Muscle-tendon unit
MVC	Maximal voluntary contraction
OTJ	Osteo-tendinous junction
S-I	Superior-inferior
VC	Voluntary contraction

#### Supplementary Information

The online version contains supplementary material available at <https://doi.org/10.1186/s40798-023-00604-5>.

**Additional file 1.** Online Resource S1.

**Additional file 2.** Online Resource S2.

#### Acknowledgements

Not applicable.

#### Author Contributions

NCA helped in original conception, literature search, methodology, formal analysis and interpretation of the data, preparation of manuscript, critical revision and editing, approval of final manuscript. CRS contributed to original conception, supervision, methodology, interpretation of the data, preparation of manuscript, critical revision and editing, approval of final manuscript. WH, AA, and AAA were involved in interpretation of the data, critical revision and editing, approval of final manuscript. WRT performed funding acquisition, resources, interpretation of the data, preparation of manuscript, critical revision and editing, approval of final manuscript. All the authors have read and approved the final manuscript.

#### Funding

Open access funding was provided by the Swiss Federal Institute of Technology, ETH Zurich. This study was funded by the Swiss National Science Foundation under grant number 182241 and the Swiss Government Excellence Scholarship number ESKAS 2017.0047. WH was funded by Engineered Air Resman Holdings Community Services, Dr. Benno Nigg Chair in Biomechanics, Mobility and Longevity under project number RT751928 Canada Research Chair Programme and CRC Chair (Tier 1) in Molecular and Cellular Biomechanics under grant number 950-200955.

#### Availability of Data and Materials

All data generated or analysed during this study are included in the published article and its supplementary information files. Additionally, any inquiry regarding the data can be asked to the corresponding author.

#### Declarations

##### Ethics Approval and Consent to Participate

Not applicable.

##### Consent for Publication

Not applicable.

##### Competing interests

The authors declare that they have no competing interests.

##### Author details

<sup>1</sup>Institute for Biomechanics, ETH Zürich, Leopold-Ruzicka-Weg 4, 8093 Zurich, Switzerland. <sup>2</sup>Human Performance Laboratory, Faculty of Kinesiology, The University of Calgary, Calgary, Canada. <sup>3</sup>Department of Mechanical Engineering, Imperial College London, London, UK. <sup>4</sup>Department of Training and Movement Sciences, Humboldt-Universität zu Berlin, and Berlin School of Movement Science, Berlin, Germany.

Received: 2 September 2022 Accepted: 2 July 2023

Published online: 19 July 2023

#### References

- Scott SH, Winter DA. Internal forces of chronic running injury sites. *Med Sci Sports Exerc.* 1990;22(3):357–69.
- Gross CE, Nunley JA 2nd. Acute Achilles tendon ruptures. *Foot Ankle Int.* 2016;37(2):233–9.
- Jarvinen TA, Kannus P, Maffulli N, Khan KM. Achilles tendon disorders: etiology and epidemiology. *Foot Ankle Clin.* 2005;10(2):255–66.
- Jozsa L, Kannus P. Histopathological findings in spontaneous tendon ruptures. *Scand J Med Sci Sports.* 1997;7(2):113–8.
- Maffulli N, Sharma P, Luscombe KL. Achilles tendinopathy: aetiology and management. *J R Soc Med.* 2004;97(10):472–6.
- Benazzo F, Zanon G, Maffulli N. An operative approach to Achilles tendinopathy. *Sports Med Arthrosc Rev.* 2000;8(1):96–101.
- Kvist M, Jozsa L, Jarvinen M. Vascular changes in the ruptured Achilles tendon and paratenon. *Int Orthop.* 1992;16(4):377–82.
- Kannus P, Natri A. Etiology and pathophysiology of tendon ruptures in sports. *Scand J Med Sci Sports.* 1997;7(2):107–12.
- van Dijk CN, van Sterkenburg MN, Wiegeler JJ, Karlsson J, Maffulli N. Terminology for Achilles tendon related disorders. *Knee Surg Sports Traumatol Arthrosc.* 2011;19(5):835–41.
- Lysholm J, Wiklander J. Injuries in runners. *Am J Sports Med.* 1987;15(2):168–71.
- Maffulli N. Rupture of the Achilles tendon. *J Bone Joint Surg Am.* 1999;81(7):1019–36.
- Maffulli N, Wong J, Almekinders LC. Types and epidemiology of tendinopathy. *Clin Sports Med.* 2003;22(4):675–92.
- Koltsov JCB, Gribbin C, Ellis SJ, Nwachukwu BU. Cost-effectiveness of operative versus non-operative management of acute Achilles tendon ruptures. *HSS J.* 2020;16(1):39–45.
- Manegold S, Tsitsilonis S, Gehlen T, Kopf S, Duda GN, Agres AN. Alterations in structure of the muscle-tendon unit and gait pattern after percutaneous repair of Achilles tendon rupture with the Dresden instrument. *Foot Ankle Surg.* 2019;25(4):529–33.
- Silbernagel KG, Steele R, Manal K. Deficits in heel-rise height and Achilles tendon elongation occur in patients recovering from an Achilles tendon rupture. *Am J Sports Med.* 2012;40(7):1564–71.
- Paavola M, Kannus P, Jarvinen TA, Khan K, Jozsa L, Jarvinen M. Achilles tendinopathy. *J Bone Joint Surg Am.* 2002;84(11):2062–76.
- Nyssonen T, Luthje P, Kroger H. The increasing incidence and difference in sex distribution of Achilles tendon rupture in Finland in 1987–1999. *Scand J Surg.* 2008;97(3):272–5.
- Sturnick DR, Demetropoulos CA, Ellis SJ, Queen RM, Kolstov JCB, Deland JT, et al. Adjacent joint kinematics after ankle arthrodesis during cadaveric gait simulation. *Foot Ankle Int.* 2017;38(11):1249–59.
- Bojsen-Moller J, Magnusson SP. Heterogeneous loading of the human Achilles tendon in vivo. *Exerc Sport Sci Rev.* 2015;43(4):190–7.



20. Cronin NJ, Peltonen J, Ishikawa M, Komi PV, Avela J, Sinkjaer T, et al. Achilles tendon length changes during walking in long-term diabetes patients. *Clin Biomech* (Bristol, Avon). 2010;25(5):476–82.
21. Shamrock AG, Varacallo M. *Achilles Tendon Rupture*. Treasure Island: StatPearls; 2021.
22. Wren TA, Yerby SA, Beaupre GS, Carter DR. Mechanical properties of the human Achilles tendon. *Clin Biomech* (Bristol, Avon). 2001;16(3):245–51.
23. Heinemeier KM, Kjaer M. In vivo investigation of tendon responses to mechanical loading. *J Musculoskelet Neuronal Interact*. 2011;11(2):115–23.
24. Wang T, Lin Z, Day RE, Gardiner B, Landao-Bassonga E, Rubenson J, et al. Programmable mechanical stimulation influences tendon homeostasis in a bioreactor system. *Biotechnol Bioeng*. 2013;110(5):1495–507.
25. Arampatzis A, Peper A, Bierbaum S, Albracht K. Plasticity of human Achilles tendon mechanical and morphological properties in response to cyclic strain. *J Biomech*. 2010;43(16):3073–9.
26. Lazarczuk SL, Maniar N, Opar DA, Duhig SJ, Shield A, Barrett RS, et al. Mechanical, material and morphological adaptations of healthy lower limb tendons to mechanical loading: a systematic review and meta-analysis. *Sports Med*. 2022;52(10):2405–29.
27. Zhang Q, Adam NC, Hosseini Nasab SH, Taylor WR, Smith CR. Techniques for in vivo measurement of ligament and tendon strain: a review. *Ann Biomed Eng*. 2020;49(1):7–28.
28. Bogaerts S, Desmet H, Slagmolen P, Peers K. Strain mapping in the Achilles tendon—a systematic review. *J Biomech*. 2016;49(9):1411–9.
29. Lichtwark GA, Wilson AM. Interactions between the human gastrocnemius muscle and the Achilles tendon during incline, level and decline locomotion. *J Exp Biol*. 2006;209(Pt 21):4379–88.
30. Tarantino D, Palermi S, Sirico F, Corrado B. Achilles tendon rupture: mechanisms of injury, principles of rehabilitation and return to play. *J Funct Morphol Kinesiol*. 2020;5(4):95
31. Park SH, Lee HS, Young KW, Seo SG. Treatment of acute Achilles tendon rupture. *Clin Orthop Surg*. 2020;12(1):1–8.
32. Edama M, Kubo M, Onishi H, Takabayashi T, Inai T, Yokoyama E, et al. The twisted structure of the human Achilles tendon. *Scand J Med Sci Sports*. 2015;25(5):e497–503.
33. Ackermans TM, Epro G, McCrum C, Oberlander KD, Suhr F, Drost MR, et al. Aging and the effects of a half marathon on Achilles tendon force-elongation relationship. *Eur J Appl Physiol*. 2016;116(11–12):2281–92.
34. Albracht K, Arampatzis A. Exercise-induced changes in triceps surae tendon stiffness and muscle strength affect running economy in humans. *Eur J Appl Physiol*. 2013;113(6):1605–15.
35. Arampatzis A, Karamanidis K, Albracht K. Adaptational responses of the human Achilles tendon by modulation of the applied cyclic strain magnitude. *J Exp Biol*. 2007;210(Pt 15):2743–53.
36. Arampatzis A, Monte GD, Karamanidis K. Effect of joint rotation correction when measuring elongation of the gastrocnemius medialis tendon and aponeurosis. *J Electromyogr Kinesiol*. 2008;18(3):503–8.
37. Arampatzis A, Stafilidis S, DeMonte G, Karamanidis K, Morey-Klapsing G, Bruggemann GP. Strain and elongation of the human gastrocnemius tendon and aponeurosis during maximal plantarflexion effort. *J Biomech*. 2005;38(4):833–41.
38. Bayliss AJ, Weatherholt AM, Crandall TT, Farmer DL, McConnell JC, Crossley KM, et al. Achilles tendon material properties are greater in the jump leg of jumping athletes. *J Musculoskelet Neuronal Interact*. 2016;16(2):105–12.
39. Bohm S, Mersmann F, Marzilger R, Schroll A, Arampatzis A. Asymmetry of Achilles tendon mechanical and morphological properties between both legs. *Scand J Med Sci Sports*. 2015;25(1):E124–32.
40. Bohm S, Mersmann F, Santuz A, Arampatzis A. Enthalpy efficiency of the soleus muscle contributes to improvements in running economy. *Proc R Soc B Biol Sci*. 2021;288(1943):20202784
41. Bryant AL, Clark RA, Bartold S, Murphy A, Bennell KL, Hohmann E, et al. Effects of estrogen on the mechanical behavior of the human Achilles tendon in vivo. *J Appl Physiol*. 2008;105(4):1035–43.
42. Clark WH, Franz JR. Age-related changes to triceps surae muscle-subtendon interaction dynamics during walking. *Sci Rep-Uk*. 2021;11(1):21264.
43. Clark WH, Franz JR. Do triceps surae muscle dynamics govern non-uniform Achilles tendon deformations? *PeerJ*. 2018;6:e5182.
44. Crouzier M, Tucker K, Lacourpaille L, Doguet V, Fayet G, Dauty M, et al. Force-sharing within the triceps surae: an achilles heel in achilles tendinopathy. *Med Sci Sport Exerc*. 2020;52(5):1076–87.
45. Csapo R, Malis V, Hodgson J, Sinha S. Age-related greater Achilles tendon compliance is not associated with larger plantar flexor muscle fascicle strains in senior women. *J Appl Physiol*. 2014;116(8):961–9.
46. Csapo R, Maganaris CN, Seynnes OR, Narici MV. On muscle, tendon and high heels. *J Exp Biol*. 2010;213(15):2582–8.
47. Geremia JM, Baroni BM, Bobbert MF, Bini RR, Lanferdini FJ, Vaz MA. Effects of high loading by eccentric triceps surae training on Achilles tendon properties in humans. *Eur J Appl Physiol*. 2018;118(8):1725–36.
48. Gerus P, Rao G, Berton E. A method to characterize in vivo tendon force-strain relationship by combining ultrasonography, motion capture and loading rates. *J Biomech*. 2011;44(12):2333–6.
49. Guilhem G, Doguet V, Hauraix H, Lacourpaille L, Jubeau M, Nordez A, et al. Muscle force loss and soreness subsequent to maximal eccentric contractions depend on the amount of fascicle strain in vivo. *Acta Physiol*. 2016;217(2):152–63.
50. Urlando A, Hawkins D. Achilles tendon adaptation during strength training in young adults. *Med Sci Sports Exerc*. 2007;39(7):1147–52.
51. Hawkins D, Lum C, Gaydos D, Dunning R. Dynamic creep and pre-conditioning of the Achilles tendon in-vivo. *J Biomech*. 2009;42(16):2813–7.
52. Houghton LA, Dawson BT, Rubenson J. Effects of plyometric training on Achilles tendon properties and shuttle running during a simulated cricket batting innings. *J Strength Cond Res*. 2013;27(4):1036–46.
53. Intziogianni K, Cassel M, Hain G, Mayer F. Gender differences of Achilles tendon cross-sectional area during loading. *Sports Med Int Open*. 2017;1(4):E135–40.
54. Ishigaki T, Kubo K. Mechanical properties and collagen fiber orientation of tendon in young and elderly. *Clin Biomech*. 2020;71:5–10.
55. Jacques T, Bini R, Arndt A. Bilateral in vivo neuromechanical properties of the triceps surae and Achilles tendon in runners and triathletes. *J Biomech*. 2021;123:110493.
56. Joseph CW, Bradshaw EJ, Furness TP, Kemp J, Clark RA. Early changes in Achilles tendon behaviour in vivo following downhill backwards walking. *J Sports Sci*. 2016;34(13):1215–21.
57. Kinugasa R, Hodgson JA, Edgerton VR, Shin DD, Sinha S. Reduction in tendon elasticity from unloading is unrelated to its hypertrophy. *J Appl Physiol*. 2010;109(3):870–7.
58. Kubo K, Ishida Y, Kolmuro T, Tsunoda N, Kanehisa H, Fukunaga T. Age-related differences in the force generation capabilities and tendon extensibilities of knee extensors and plantar flexors in men. *J Gerontol A Biol*. 2007;62(11):1252–8.
59. Kubo K, Miyazaki D, Tanaka S, Shimoju S, Tsunoda N. Relationship between Achilles tendon properties and foot strike patterns in long-distance runners. *J Sport Sci*. 2015;33(7):665–9.
60. Kubo K, Teshima T, Ikebukuro T, Hirose N, Tsunoda N. Tendon properties and muscle architecture for knee extensors and plantar flexors in boys and men. *Clin Biomech*. 2014;29(5):506–11.
61. Karamanidis K, Epro G. Monitoring muscle-tendon adaptation over several years of athletic training and competition in elite track and field jumpers. *Front Physiol*. 2020;11:607544.
62. Letocart A, Grosset JF. Achilles tendon adaptation to neuromuscular electrical stimulation: morphological and mechanical changes. *Int J Sports Med*. 2021;42(07):651–61.
63. Lichtwark GA, Cresswell AG, Newsham-West RJ. Effects of running on human Achilles tendon length-tension properties in the free and gastrocnemius components. *J Exp Biol*. 2013;216(Pt 23):4388–94.
64. Maganaris CN, Kawakami Y, Fukunaga T. Changes in aponeurotic dimensions upon muscle shortening: in vivo observations in man. *J Anat*. 2001;199(Pt 4):449–56.
65. Morrison SM, Dick TJM, Wakeling JM. Structural and mechanical properties of the human Achilles tendon: Sex and strength effects. *J Biomech*. 2015;48(12):3530–3.
66. Muraoka T, Muramatsu T, Fukunaga T, Kanehisa H. Elastic properties of human Achilles tendon are correlated to muscle strength. *J Appl Physiol*. 2005;99(2):665–9.
67. Obst SJ, Newsham-West R, Barrett RS. Changes in Achilles tendon mechanical properties following eccentric heel drop exercise are specific to the free tendon. *Scand J Med Sci Sports*. 2016;26(4):421–31.

68. Obst SJ, Renault JB, Newsham-West R, Barrett RS. Three-dimensional deformation and transverse rotation of the human free Achilles tendon in vivo during isometric plantarflexion contraction. *J Appl Physiol*. 2014;116(4):376–84.
69. Obst SJ, Newsham-West R, Barrett RS. Three-dimensional morphology and strain of the human Achilles free tendon immediately following eccentric heel drop exercise. *J Exp Biol*. 2015;218(Pt 24):3894–900.
70. Onambele GL, Narici MV, Maganaris CN. Calf muscle-tendon properties and postural balance in old age. *J Appl Physiol*. 2006;100(6):2048–56.
71. Rosager S, Aagaard P, Dyhre-Poulsen P, Neergaard K, Kjaer M, Magnusson SP. Load-displacement properties of the human triceps surae aponeurosis and tendon in runners and non-runners. *Scand J Med Sci Spor*. 2002;12(2):90–8.
72. Shin D, Finni T, Ahn S, Hodgson JA, Lee HD, Edgerton VR, et al. Effect of chronic unloading and rehabilitation on human Achilles tendon properties: a velocity-encoded phase-contrast MRI study. *J Appl Physiol*. 2008;105(4):1179–86.
73. Stenroth L, Peltonen J, Cronin NJ, Sipila S, Finni T. Age-related differences in Achilles tendon properties and triceps surae muscle architecture in vivo. *J Appl Physiol*. 2012;113(10):1537–44.
74. Stenroth L, Thelen D, Franz J. Biplanar ultrasound investigation of in vivo Achilles tendon displacement non-uniformity. *Transl Sports Med*. 2019;2(2):73–81.
75. Stenroth L, Cronin NJ, Peltonen J, Korhonen MT, Sipila S, Finni T. Triceps surae muscle-tendon properties in older endurance- and sprint-trained athletes. *J Appl Physiol*. 2016;120(1):63–9.
76. Tomlinson DJ, Erskine RM, Morse CI, Pappachan JM, Sanderson-Gillard E, Onambele-Pearson GL. The combined effects of obesity and ageing on skeletal muscle function and tendon properties in vivo in men. *Endocrine*. 2021;72(2):411–22.
77. Wakahara T, Kanehisa H, Kawakami Y, Fukunaga T. Effects of knee joint angle on the fascicle behavior of the gastrocnemius muscle during eccentric plantar flexions. *J Electromyogr Kines*. 2009;19(5):980–7.
78. Waugh CM, Blazevich AJ, Fath F, Korff T. Age-related changes in mechanical properties of the Achilles tendon. *J Anat*. 2012;220(2):144–55.
79. Werkhausen A, Cronin NJ, Albracht K, Paulsen G, Larsen AV, Bojsen-Moller J, et al. Training-induced increase in Achilles tendon stiffness affects tendon strain pattern during running. *PeerJ*. 2019;7:e6764.
80. Wiesinger HP, Rieder F, Kosters A, Muller E, Seynnes OR. Sport-specific capacity to use elastic energy in the patellar and Achilles tendons of elite athletes. *Front Physiol*. 2017;8:132.
81. Wolfram S, Hodson-Tole EF, Morse CI, Winwood KL, McEwan IM. Elongation differences between the sub-tendons of gastrocnemius medialis and lateralis during plantarflexion in different frontal plane position of the foot. *Gait Posture*. 2020;75:149–54.
82. Zhang XN, Deng LQ, Xiao SL, Li L, Fu WJ. Sex differences in the morphological and mechanical properties of the Achilles tendon. *Int J Env Res Pub He*. 2021;18(17):8974.
83. Farris DJ, Trewartha G, McGuigan MP, Lichtwark GA. Differential strain patterns of the human Achilles tendon determined in vivo with free-hand three-dimensional ultrasound imaging. *J Exp Biol*. 2013;216(Pt 4):594–600.
84. Deng LQ, Zhang XN, Xiao SL, Yang Y, Li L, Fu WJ. Changes in the plantar flexion torque of the ankle and in the morphological characteristics and mechanical properties of the Achilles tendon after 12-week gait retraining. *Life-Basel*. 2020;10(9):159.
85. Clark WH, Franz JR. Triceps surae muscle-subtendon interaction differs between young and older adults. *Connect Tissue Res*. 2020;61(1):104–13.
86. Finni T, Hodgson JA, Lai AM, Edgerton VR, Sinha S. Nonuniform strain of human soleus aponeurosis-tendon complex during submaximal voluntary contractions in vivo. *J Appl Physiol*. 2003;95(2):829–37.
87. Iwanuma S, Akagi R, Kurihara T, Ikegawa S, Kanehisa H, Fukunaga T, et al. Longitudinal and transverse deformation of human Achilles tendon induced by isometric plantar flexion at different intensities. *J Appl Physiol*. 2011;110(6):1615–21.
88. Joseph MF, Lillie KR, Bergeron DJ, Cota KC, Yoon JS, Kraemer WJ, et al. Achilles tendon biomechanics in response to acute intense exercise. *J Strength Cond Res*. 2014;28(5):1181–6.
89. Lepley AS, Joseph MF, Daigle NR, Digiacomio JE, Galer J, Rock E, et al. Sex differences in mechanical properties of the Achilles tendon: longitudinal response to repetitive loading exercise. *J Strength Cond Res*. 2018;32(11):3070–9.
90. Magnusson SP, Hansen P, Aagaard P, Brond J, Dyhre-Poulsen P, Bojsen-Moller J, et al. Differential strain patterns of the human gastrocnemius aponeurosis and free tendon, in vivo. *Acta Physiol Scand*. 2003;177(2):185–95.
91. Merza E, Pearson S, Lichtwark G, Garofolini A, Malliaras P. Reliability of human Achilles tendon stiffness measures using freehand 3-D ultrasound. *Ultrasound Med Biol*. 2021;47(4):973–81.
92. Nuri L, Obst SJ, Newsham-West R, Barrett RS. Recovery of human Achilles tendon three-dimensional deformation following conditioning. *J Sci Med Sport*. 2018;21(5):473–8.
93. Nuri L, Obst SJ, Newsham-West R, Barrett RS. Regional three-dimensional deformation of human Achilles tendon during conditioning. *Scand J Med Sci Sports*. 2017;27(11):1263–72.
94. Park DY, Rubenson J, Carr A, Mattson J, Besier T, Chou LB. Influence of stretching and warm-up on Achilles tendon material properties. *Foot Ankle Int*. 2011;32(4):407–13.
95. Peltonen J, Cronin NJ, Avela J, Finni T. In vivo mechanical response of human Achilles tendon to a single bout of hopping exercise. *J Exp Biol*. 2010;213(8):1259–65.
96. Reeves ND, Cooper G. Is human Achilles tendon deformation greater in regions where cross-sectional area is smaller? *J Exp Biol*. 2017;220(Pt 9):1634–42.
97. Bojsen-Moller J, Hansen P, Aagaard P, Svantesson U, Kjaer M, Magnusson SP. Differential displacement of the human soleus and medial gastrocnemius aponeuroses during isometric plantar flexor contractions in vivo. *J Appl Physiol*. 2004;97(5):1908–14.
98. Child S, Bryant AL, Clark RA, Crossley KM. Mechanical properties of the Achilles tendon aponeurosis are altered in athletes with achilles tendinopathy. *Am J Sport Med*. 2010;38(9):1885–93.
99. Muramatsu T, Muraoka T, Takeshita D, Kawakami Y, Hirano Y, Fukunaga T. Mechanical properties of tendon and aponeurosis of human gastrocnemius muscle in vivo. *J Appl Physiol*. 2001;90(5):1671–8.
100. Lee HD, Finni T, Hodgson JA, Lai AM, Edgerton VR, Sinha S. Soleus aponeurosis strain distribution following chronic unloading in humans: an in vivo MR phase-contrast study. *J Appl Physiol*. 2006;100(6):2004–11.
101. Delabastita T, Hollville E, Catteau A, Cortvriendt P, De Groote F, Vanwanseele B. Distal-to-proximal joint mechanics redistribution is a main contributor to reduced walking economy in older adults. *Scand J Med Sci Sports*. 2021;31(5):1036–47.
102. Franz JR, Thelen DG. Depth-dependent variations in Achilles tendon deformations with age are associated with reduced plantarflexor performance during walking. *J Appl Physiol*. 2015;119(3):242–9.
103. Franz JR, Slane LC, Rasseke K, Thelen DG. Non-uniform in vivo deformations of the human Achilles tendon during walking. *Gait Posture*. 2015;41(1):192–7.
104. Froberg A, Martensson M, Arndt A. The effect of ankle foot orthosis' design and degree of dorsiflexion on Achilles tendon biomechanics-tendon displacement, lower leg muscle activation, and plantar pressure during walking. *Front Sports Act Living*. 2020;2:16.
105. Ishikawa M, Komi PV, Grey MJ, Lepola V, Bruggemann GP. Muscle-tendon interaction and elastic energy usage in human walking. *J Appl Physiol*. 2005;99(2):603–8.
106. Kharazi M, Bohm S, Theodorakis C, Mersmann F, Arampatzis A. Quantifying mechanical loading and elastic strain energy of the human Achilles tendon during walking and running. *Sci Rep*. 2021;11(1):5830.
107. Lichtwark GA, Bougoulas K, Wilson AM. Muscle fascicle and series elastic element length changes along the length of the human gastrocnemius during walking and running. *J Biomech*. 2007;40(1):157–64.
108. Lorentzen J, Willerslev-Olsen M, Huche Larsen H, Svane C, Forman C, Frisk R, et al. Feedforward neural control of toe walking in humans. *J Physiol*. 2018;596(11):2159–72.
109. Mian OS, Thom JM, Ardigo LP, Minetti AE, Narici MV. Gastrocnemius muscle-tendon behaviour during walking in young and older adults. *Acta Physiol (Oxf)*. 2007;189(1):57–65.

110. Waugh CM, Scott A. Substantial Achilles adaptation following strength training has no impact on tendon function during walking. *PLoS ONE*. 2021;16(7):e0255221.
111. Yamamoto M, Shimatani K, Hasegawa M, Kurita Y. Effects of varying plantarflexion stiffness of ankle-foot orthosis on Achilles tendon and propulsion force during gait. *IEEE Trans Neural Syst Rehabil Eng*. 2020;28(10):2194–202.
112. Pizzolato C, Shim VB, Lloyd DG, Devaprakash D, Obst SJ, Newsham-West R, et al. Targeted Achilles tendon training and rehabilitation using personalized and real-time multiscale models of the neuromusculoskeletal system. *Front Bioeng Biotechnol*. 2020;8:878.
113. Farris DJ, Trewartha G, McGuigan MP. Could intra-tendinous hyperthermia during running explain chronic injury of the human Achilles tendon? *J Biomech*. 2011;44(5):822–6.
114. Farris DJ, Buckeridge E, Trewartha G, McGuigan MP. The effects of orthotic heel lifts on Achilles tendon force and strain during running. *J Appl Biomech*. 2012;28(5):511–9.
115. Kernozek T, Gheidi N, Ragan R. Comparison of estimates of Achilles tendon loading from inverse dynamics and inverse dynamics-based static optimisation during running. *J Sports Sci*. 2017;35(21):2073–9.
116. Lyght M, Nockerts M, Kernozek TW, Ragan R. Effects of Foot Strike and Step Frequency on Achilles Tendon Stress During Running. *J Appl Biomech*. 2016;32(4):365–72.
117. Monte A, Maganaris C, Baltzopoulos V, Zamparo P. The influence of Achilles tendon mechanical behaviour on “apparent” efficiency during running at different speeds. *Eur J Appl Physiol*. 2020;120(11):2495–505.
118. Sano K, Akiyama M, Hoffren-Mikkola M, Ito A, Komi PV, Ishikawa M. Age-specific neuromuscular interaction during elderly habitual running. *Acta Physiol*. 2015;215(2):79–88.
119. Suzuki T, Ogane R, Yaeshima K, Kinugasa R. Forefoot running requires shorter gastrocnemius fascicle length than rearfoot running. *J Sports Sci*. 2019;37(17):1972–80.
120. Swinnen W, Kipp S, Kram R. Comparison of running and cycling economy in runners, cyclists, and triathletes. *Eur J Appl Physiol*. 2018;118(7):1331–8.
121. Takeshita T, Noro H, Hata K, Yoshida T, Fukunaga T, Yanagiya T. Muscle-tendon behavior and kinetics in gastrocnemius medialis during forefoot and rearfoot strike running. *J Appl Biomech*. 2021;37(3):240–7.
122. Werkhausen A, Cronin NJ, Albracht K, Bojsen-Moller J, Seynnes OR. Distinct muscle-tendon interaction during running at different speeds and in different loading conditions. *J Appl Physiol*. 2019;127(1):246–53.
123. Zhang X, Deng L, Yang Y, Li L, Fu W. Acute shoe effects on Achilles tendon loading in runners with habitual rearfoot strike pattern. *Gait Posture*. 2020;82:322–8.
124. Farris DJ, Sawicki GS. The mechanics and energetics of human walking and running: a joint level perspective. *J R Soc Interface*. 2012;9(66):110–8.
125. Swinnen W, Hoogkamer W, Delabastita T, Aeles J, De Groot F, Vanwaseele B. Effect of habitual foot-strike pattern on the gastrocnemius medialis muscle-tendon interaction and muscle force production during running. *J Appl Physiol*. 2019;126(3):708–16.
126. Lichtwark GA, Wilson AM. In vivo mechanical properties of the human Achilles tendon during one-legged hopping. *J Exp Biol*. 2005;208(Pt 24):4715–25.
127. Farris DJ, Trewartha G, McGuigan MP. The effects of a 30-min run on the mechanics of the human Achilles tendon. *Eur J Appl Physiol*. 2012;112(2):653–60.
128. Stosic J, Finni T. Gastrocnemius tendon length and strain are different when assessed using straight or curved tendon model. *Eur J Appl Physiol*. 2011;111(12):3151–4.
129. Hoffren-Mikkola M, Ishikawa M, Rantalainen T, Avela J, Komi PV. Neuromuscular mechanics and hopping training in elderly. *Eur J Appl Physiol*. 2015;115(5):863–77.
130. Monte A, Nardello F, Zamparo P. Mechanical advantage and joint function of the lower limb during hopping at different frequencies. *J Biomech*. 2021;118: 110294.
131. Sano K, Ishikawa M, Nobue A, Danno Y, Akiyama M, Oda T, et al. Muscle-tendon interaction and EMG profiles of world class endurance runners during hopping. *Eur J Appl Physiol*. 2013;113(6):1395–403.
132. Finni T, Komi PV, Lepola V. In vivo human triceps surae and quadriceps femoris muscle function in a squat jump and counter movement jump. *Eur J Appl Physiol*. 2000;83(4–5):416–26.
133. Firminger CR, Bruce OL, Wannop JW, Stefanyszyn DJ, Edwards WB. Effect of Shoe and Surface Stiffness on Lower Limb Tendon Strain in Jumping. *Med Sci Sports Exerc*. 2019;51(9):1895–903.
134. Intziogianni K, Cassel M, Rauf S, White S, Rector M, Kaplick H, et al. Influence of age and pathology on achilles tendon properties during a single-leg jump. *Int J Sports Med*. 2016;37(12):973–8.
135. Kummel J, Cronin NJ, Kramer A, Avela J, Gruber M. Conditioning hops increase triceps surae muscle force and Achilles tendon strain energy in the stretch-shortening cycle. *Scand J Med Sci Spor*. 2018;28(1):126–37.
136. Werkhausen A, Albracht K, Cronin NJ, Paulsen G, Bojsen-Moller J, Seynnes OR. Effect of training-induced changes in Achilles tendon stiffness on muscle-tendon behavior during landing. *Front Physiol*. 2018;9:794.
137. Werkhausen A, Albracht K, Cronin NJ, Meier R, Bojsen-Moller J, Seynnes OR. Modulation of muscle-tendon interaction in the human triceps surae during an energy dissipation task. *J Exp Biol*. 2017;220(Pt 22):4141–9.
138. Thermann H, Frerichs O, Biewener A, Krettek C, Schandelmaier P. Biomechanical studies of human Achilles tendon rupture. *Unfallchirurg*. 1995;98(11):570–5.
139. Hirata K, Kanehisa H, Miyamoto-Mikami E, Miyamoto N. Evidence for intermuscle difference in slack angle in human triceps surae. *J Biomech*. 2015;48(6):1210–3.
140. Hug F, Lacourpaille L, Maisetti O, Nordez A. Slack length of gastrocnemius medialis and Achilles tendon occurs at different ankle angles. *J Biomech*. 2013;46(14):2534–8.
141. Schepull T, Kvist J, Norrman H, Trinks M, Berlin G, Aspenberg P. Autologous platelets have no effect on the healing of human achilles tendon ruptures: a randomized single-blind study. *Am J Sports Med*. 2011;39(1):38–47.
142. Kongsgaard M, Nielsen CH, Hegnsvad S, Aagaard P, Magnusson SP. Mechanical properties of the human Achilles tendon, in vivo. *Clin Biomech (Bristol, Avon)*. 2011;26(7):772–7.
143. Matijevich ES, Branscombe LM, Zelik KE. Ultrasound estimates of Achilles tendon exhibit unexpected shortening during ankle plantarflexion. *J Biomech*. 2018;72:200–6.
144. Riemersma DJ, van den Bogert AJ, Jansen MO, Schamhardt HC. Tendon strain in the forelimbs as a function of gait and ground characteristics and in vitro limb loading in ponies. *Equine Vet J*. 1996;28(2):133–8.
145. Kear M, Smith RN. A method for recording tendon strain in sheep during locomotion. *Acta Orthop Scand*. 1975;46(6):896–905.
146. Zelik KE, Huang TW, Adamczyk PG, Kuo AD. The role of series ankle elasticity in bipedal walking. *J Theor Biol*. 2014;346:75–85.
147. Lichtwark GA, Wilson AM. Optimal muscle fascicle length and tendon stiffness for maximising gastrocnemius efficiency during human walking and running. *J Theor Biol*. 2008;252(4):662–73.
148. Herzog W. The problem with skeletal muscle series elasticity. *BMC Biomed Eng*. 2019;1:28.
149. Cronin NJ, Avela J, Finni T, Peltonen J. Differences in contractile behaviour between the soleus and medial gastrocnemius muscles during human walking. *J Exp Biol*. 2013;216(Pt 5):909–14.
150. Slane LC, Thelen DG. Non-uniform displacements within the Achilles tendon observed during passive and eccentric loading. *J Biomech*. 2014;47(12):2831–5.
151. Arndt A, Bengtsson AS, Peolsson M, Thorstensson A, Movin T. Non-uniform displacement within the Achilles tendon during passive ankle joint motion. *Knee Surg Sports Traumatol Arthrosc*. 2012;20(9):1868–74.
152. Chimenti RL, Bucklin M, Kelly M, Ketz J, Flemister AS, Richards MS, et al. Insertional achilles tendinopathy associated with altered transverse compressive and axial tensile strain during ankle dorsiflexion. *J Orthop Res*. 2017;35(4):910–5.
153. Chimenti RL, Flemister AS, Ketz J, Bucklin M, Buckley MR, Richards MS. Ultrasound strain mapping of Achilles tendon compressive strain patterns during dorsiflexion. *J Biomech*. 2016;49(1):39–44.
154. Hof AL, Van Zandwijk JP, Bobbert MF. Mechanics of human triceps surae muscle in walking, running and jumping. *Acta Physiol Scand*. 2002;174(1):17–30.

155. Maganaris CN, Baltzopoulos V, Sargeant AJ. Changes in Achilles tendon moment arm from rest to maximum isometric plantarflexion: in vivo observations in man. *J Physiol.* 1998;510(Pt 3):977–85.
156. Maas H, Finni T. Mechanical coupling between muscle-tendon units reduces peak stresses. *Exerc Sport Sci Rev.* 2018;46(1):26–33.

### **Publisher's Note**

Springer Nature remains neutral with regard to jurisdictional claims in published maps and institutional affiliations.

**Submit your manuscript to a SpringerOpen<sup>®</sup> journal and benefit from:**

- ▶ Convenient online submission
- ▶ Rigorous peer review
- ▶ Open access: articles freely available online
- ▶ High visibility within the field
- ▶ Retaining the copyright to your article

---

Submit your next manuscript at ▶ [springeropen.com](https://www.springeropen.com)

---