

Developing a Context-based Bounded Centrality Approach of Street Patterns in Flooding: A Case Study of London

Xuhui Lin^a, Qiuchen Lu^a, Neil Gunn^b, Simon Sølvesten^{b, c}

^a University College London, UK

^b Willis Towers Watson, UK

^c European Centre for Risk & Resilience Studies

zcxlx13@ucl.ac.uk

Abstract. Floods affect an average of 21 million people worldwide each year, and their frequency is expected to increase due to climate warming, population growth, and rapid urbanization. Previous research on the robustness of transportation networks during floods has mainly used percolation theory. However, the component size of disrupted networks cannot capture the entire network's information and, more importantly, does not reflect the local reality. To address this issue, this study introduces a novel approach to context-based bounded centrality to extract the local impact of disruption. In particular, we propose embedding travel behaviour into the road network to calculate bounded centrality and develop new measures characterizing connected component size during flooding. Our analysis can identify critical road segments during floods by comparing the decreasing trend and dispersibility of component size on road networks. To demonstrate the feasibility of these approaches, a case study of the London transportation infrastructure that integrates road networks with relevant urban contexts is presented in this paper. We find that this approach is beneficial for practical risk management, helping decision-makers allocate resources effectively in space and time.

1. Introduction

Floods have become increasingly catastrophic in recent decades, causing extensive losses worldwide. Climate change, extreme rainfall, and rising sea levels are significant factors that contribute to the frequency and severity of flood hazards (Dong et al., 2020). Due to the rapid development of economic assets and urbanization in flood-prone areas, global exposure to floods is expected to triple by 2050 (Aerts et al., 2018). This growing flood risk poses significant threats to infrastructure networks crucial for community well-being. Among these infrastructure networks, roadways are critical in transporting people and goods, evacuating individuals from affected regions, and providing access to resources and services for affected populations (Tachaudomdach et al., 2018). Disruptions in roadways can lead to more isolated communities, making emergency management more challenging due to limited access. To better understand the increasing risks and proactively mitigate the impacts on communities, a quantitative flood-risk assessment is needed to systematically estimate the local importance of roadways and the robustness of road networks (Jongman et al., 2015). Such an assessment can inform hazard mitigation, investment decisions, and prioritization of improvement projects.

Roadway network robustness refers to the network's ability to access various destinations despite disruptions such as flood inundation (Snelder, van Zuylen and Immers, 2012). Percolation theory is often used to analyse network robustness under link and node disruption, with network robustness measured by topological connectivity based on the size of the largest connected component (Wang et al., 2019). While various studies have employed percolation theory to examine roadway robustness, these approaches do not fully capture the impact of local disruptions on the network during a flooding event (Loreti et al., 2022). They focus only on the overall size of the largest connected component in the network without considering the specific locations and characteristics of disrupted nodes and links. This incomplete understanding of network vulnerability and robustness can hinder efforts to mitigate the potential impact of disruptions on specific communities and areas (Berezin et al., 2015). To address these

limitations, a few research studies have proposed new models to evaluate the local impact of disruption. However, these studies have mainly focused on the accessibility of critical infrastructure, such as hospitals or stations, during flooding (Dong et al., 2019, 2020; Ouyang et al., 2019) rather than the impact of local disruption on the global road networks.

This study presents a novel approach to evaluating the impact of local disruption on road networks by proposing a context-based boundary centrality indicator. The objective of this paper is twofold. Firstly, a boundary centrality indicator based on traveller behaviours is utilized to capture the impact of local disruption on road networks. Secondly, a new approach to evaluating network robustness based on component size is introduced. To demonstrate the feasibility of these approaches, a case study of the London transportation infrastructure that integrates road networks with relevant urban contexts is developed. The results of this case study highlight the efficacy of the proposed approaches in evaluating the impact of local disruption on road networks and provide valuable insights about destructiveness and dispersiveness into the underlying mechanisms that affect network robustness.

This paper is structured as follows: Section 2 provides a comprehensive review of previous research and practice relevant to the topic of this study. Section 3 presents the research framework, which comprises three modules, and provides detailed descriptions of each module. Section 4 presents a case study based on the London transportation network, demonstrating the proposed framework's effectiveness. Finally, the conclusions of this study are presented in Section 5.

2. Literature Review

The investigation of robustness in disrupted networks typically involves the measurement of vulnerability and reliability (Sullivan, Aultman-Hall and Novak, 2009). Vulnerability refers to the extent to which a system cannot function following a disruption. Reliability can be defined as the probability that a system can maintain satisfactory operation over a significant time frame (Mattsson and Jenelius, 2015). Reliability analysis is classified into three categories: connectivity reliability, travel time reliability and capacity reliability (Murray and Grubestic, 2007). These classifications are based on determining the probability that a node will remain connected, a trip between nodes can be completed within a specified time interval, and a network can accommodate a specific level of travel demand respectively. The reliability study in this context necessitates knowledge of the travel demand from a designated origin-destination pair (Dong et al., 2019). However, the collection of actual post-disaster demand data is limited, making such analyses in real-world studies impractical.

The idea of network robustness is based on evaluating how well a system can sustain its performance in response to unforeseen internal or external events or alterations (Albert and Barabási, 2002). Regarding the evaluation of real-world network robustness, some research presents several common features (LaRocca et al., 2015). 1) Researchers typically generate empirical data or simulate a network through random graph generation or mapping real network data. 2) Measuring structural features of the network under investigation. 3) Implementing a random failure or targeted attack on networks. 4) Evaluating the performance of the network, both for static and dynamic cases. In the realm of road networks, this analysis involves viewing the road infrastructure as a system of nodes (intersections) and links (roads) to examine network disruption's impact on society as a whole. Due to this research, various network robustness measures have emerged in recent years.

The measurement of giant connected components (GCC) based on percolation theory is a well-established framework used in network science to assess the robustness of disrupted networks (Albert and Barabási, 2002; Newman, 2003). Researchers have applied percolation theory to

study the disruptive effects of earthquakes, traffic congestion, and flooding events on road networks (Loreti et al., 2022). Abdulla et al. (2020) presented a flood diffusion model to investigate the effects of flood diffusion on road network connectivity. By measuring the size of the giant components for each fraction of removed nodes, they found that the road networks' connectivity was particularly vulnerable to the flood propagation that started from nodes with high values of betweenness. Based on this study, Farahmand et al. (2020) proposed a probabilistic approach to examine the failure of road networks, which was assessed through the calculation of the giant component size of the network. Removing nodes resulted in significant drops in the network's connectivity, as indicated by the size of the giant component. This suggests the existence of crucial roads in the network. Dong et al. (2019) proposed a probabilistic link removal to mimic earthquake-induced failures and addressed the effects on the Portland Road network. They claimed that measures of network's robustness should consider critical infrastructures rather than giant components size based on global networks. Likewise, Loreti et al (2022) propose to partition the road network based on Voronoi Cell of critical infrastructure and define new measures that characterize the impact of the flooding event. However, in urban environments, the coverage range and spatial distribution of infrastructures with different hierarchical levels is often not spatially uniform. This can be observed in the varying coverage range of national and regional infrastructure. Furthermore, when a network is split into smaller sub-networks, nodes located on the boundary of these sub-networks lose neighbouring properties because these nodes are no longer considered part of the larger network.

In most of these previous studies related to the application of percolation-based flood modelling on the road system, the network's functionality was expressed through the size of the GCC and its evolution when roads are removed. However, GCC is an aggregated quantity that does not capture the entire network's information and, more importantly, does not reflect the local reality. Therefore, more precise information is necessary, particularly on a local scale, for a realistic evaluation of the disruption's effects.

3. Research Framework

A research framework in this study is raised to evaluate road network robustness under flood via exploring local impacts of disruption. The research framework comprises three modules, as illustrated in Fig. 1. Module 1 involves collecting relevant datasets, such as road networks, commuter behaviours, and road hierarchy, for calculating the bounded centrality of nodes in Module 2. In addition, module 1 includes creating an inundation map of road networks based on flood simulation software.

Module 2 proposes a centrality map that integrates road networks' bounded centrality and exposure rate and establishes a framework for extracting the local importance of nodes from road networks. The centrality map consists of three steps: 1) Calculating bounded centrality based on commuter behaviours to capture the local impact of nodes. 2) Extracting the exposure rate of network segments from the flood map. 3) Devising an integrated centrality map that combines different levels of bounded centrality and exposure rate to create a context-based road centrality map for evaluating road network robustness in Module 3.

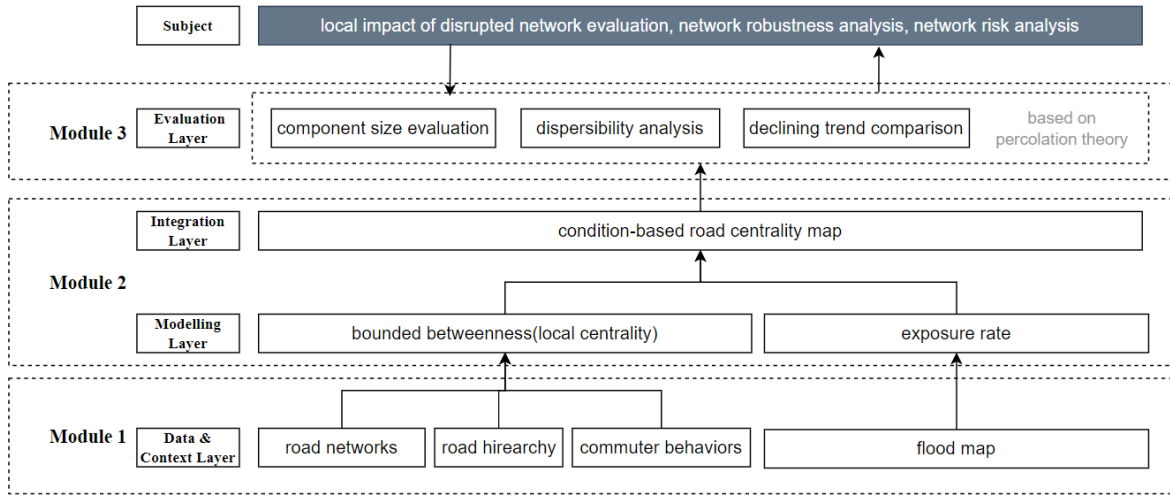


Figure 1 Framework of Exploring the Impact of Road Disruption under Flood.

In Module 3, a new method for evaluating network robustness is presented, which is based on the component size list. The method involves removing nodes of high local importance at multiple levels, in order to investigate the impact on the speed of network collapse and dispersion.

3.1 Module 1: Data & context Layers

The challenges for integrating context information with road segments involve (i) no explicit local community representation as the boundary for road networks since local impacts of nodes on networks often rely on explicit topology information (Hillier and Hanson, 1984); (ii) no uniform framework to integrate road networks with various levels of local impact under flooding event, which require inundation map information (Wang et al., 2019). Corresponding to the above challenges, this module is designed to collect related datasets to support further calculation.

In order to set up the boundary for road segments, firstly, the coverage range of a single road network refers to the road segments that people commonly use within a certain distance. As described in Figure 2, different levels of roads have different coverage ranges, for example, 2-5 km for primary roads and 1-2 km for secondary and tertiary roads. However, due to the coverage range also depending on surrounding information, such as population density and location, this study applied different radii to road segments, such as 500m, 1000m and 2000m, to capture their local centrality in various scales. Based on this method, the surrounding relationships of the selected road segments can be calculated in Module 2.

Secondly, in order to obtain the flood map based on road networks, we simulate the flood using the High-Performance Integrated hydrodynamic Modelling System (HiPIMS) (Liang and Smith, 2015) for given runoffs with flood distribution and obtain the direct failures of a road network measured by the inundated intersections. HiPIMS treated the whole catchment as the computational domain and will be discretized using a uniform grid at a hyper-resolution of 5~10 m (Xia, Liang and Ming, 2019). High-quality DEM integrated with the terrain and building height information could provide background information on HiPIMS. In addition, land-cover data brought information on Manning coefficient-based related friction. Also, directly using rainfall as input, HiPIMS predicts the dynamics of surface water moving between grid cells based on these input data.

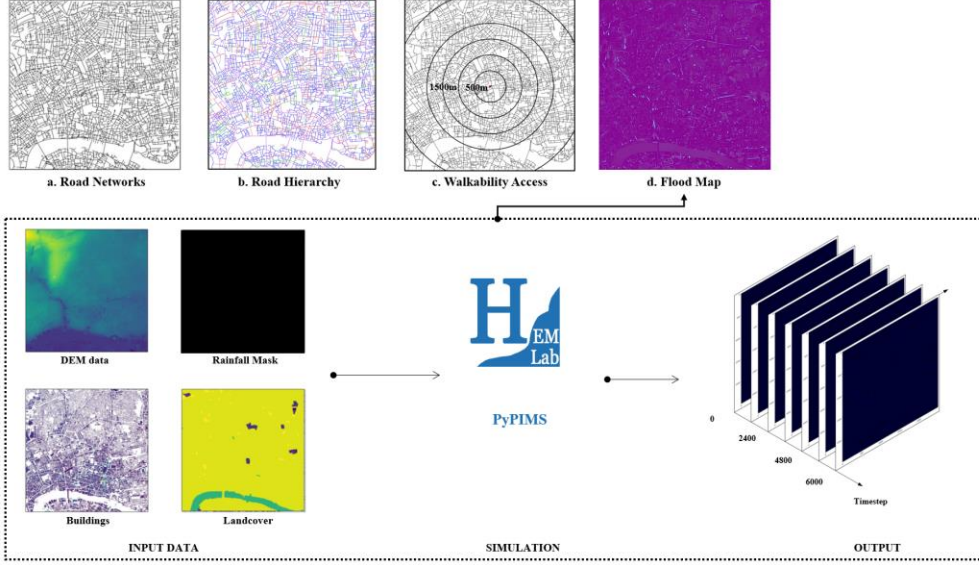


Figure 2 Framework of Module 1

3.2 Module 2: Modelling Layer

The challenges for extracting the local importance of road segments: (i) Most existing methods have difficulties capturing precise local information (Loreti et al., 2022); (ii) Although some methods attempt to capture local value, they focus on critical infrastructure rather than pedestrian travel behaviour (Dong et al., 2019). This approach would overlook some urban areas with fewer critical infrastructures, such as commercial areas.

The second module proposes a centrality calculation approach to integrating the urban context information to extract the local importance of road segments in the whole network. The shortest path betweenness centrality measures a node's importance in a network based on its ability to connect different network parts (Freeman, 1977). The betweenness $C_B(v)$ of a vertex $v \in V$ is defined to be.

$$C_B(v) = \sum_{s,t \in V} \frac{\sigma(s,t|v)}{\sigma(s,t)} \quad (1)$$

s, t stands for the head and tail of the shortest path, denote by $\sigma(s, t)$ the number of shortest (s, t) -paths and let $\sigma(s, t|v)$ be the number of shortest (s, t) -paths passing through some vertex v other than s, t . In the context of road networks, traditional network graph treated intersection as 'node', and road segment as 'link'. To explore the impact of local network segments, this study constructed a network graph by treating roads as nodes and their connection as links. A road segment with high betweenness centrality indicates an important link between different network parts. Therefore, if this road segment is disrupted or damaged, it may significantly impact the overall network's functionality and connectivity. By using betweenness centrality in road robustness assessment, transportation planners and decision-makers can identify critical road segments that, if disrupted, could have severe consequences on the network's performance. This information can help prioritise investments in road maintenance, improve emergency response planning, and inform decisions about infrastructure investments.

Due to the standard measure of betweenness considering shortest paths, irrespective of their length, very long distances may not be realistic for network relations (Brandes, 2008). Thus, it would not be sufficient to capture the importance of road segments among networks if only considering the global betweenness of roads, as other factors, such as the road's importance to

local communities, would also be relevant. Hence, incorporating contextual information is essential and necessary, and it can be crucial for a more comprehensive importance assessment, which was not included in the previous research studies. Borgatti and Everett (2006) define the k-betweenness of a vertex as the sum of dependencies of pairs at most k apart, i.e., only contributions from shortest paths of length bounded by a constant k are included. Let

$$C_{B(k)}(v) = \sum_{s,t \in V: \text{dist}(s,t) \leq k} \frac{\sigma(s,t|v)}{\sigma(s,t)} \quad (2)$$

If paths longer than a certain distance (k) are to be excluded, the breadth-first search algorithm can be stopped when a vertex that is k distances away from the starting vertex. Thus, in this paper, based on the distance set by the coverage range of road segments in Module 1, the community local spatial scale has been embedded into graph calculation via setting k as 500m, 1000m, 2000m, 3000m and global to capture node's neighbourhood relationship on networks.

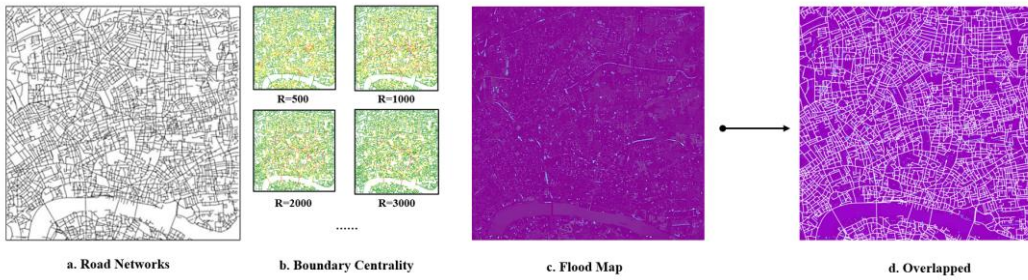


Figure 3 Framework of Module 2

3.3 Module 3: Evaluation Layer

Based on percolation theory, the challenges faced by the indicators to evaluate network robustness include: (1) Existing methods only focus on the giant connected component, ignoring the connectivity of the entire network and therefore failing to evaluate the comprehensive performance of networks (Loreti et al., 2022).

Module 3 aims to evaluate the effectiveness of the network from different spatial scales by analyzing component sizes. This module also seeks to validate the feasibility of context-based bounded centrality methods in identifying critical road networks during flooding. In network theory, a component is a subset of nodes connected but not to any nodes outside that subset. It refers to a group of nodes that are "reachable" from each other but not from any other nodes outside that group (Albert and Barabási, 2002). Understanding component sizes in networks is crucial to comprehend network structure and behaviour (Newman, 2010). There are various types of components in a network, including the giant component, which is the largest connected component containing a significant proportion of nodes in the network. Networks with a larger giant component are generally more robust and less vulnerable to disruption than networks with a smaller giant component. It is noteworthy that smaller components in the network. However, they may consist of just a few nodes and can also reflect the type of network interruption that can quickly reduce urban connectivity (Wang et al., 2019). Ignoring these small, connected components may exacerbate emergency management difficulties due to limited access. Evaluating the number and size of these smaller connected components can provide valuable insights into the localized road disruption that can lead to a rapid reduction in urban connectivity.

In this paper, a novel approach is proposed to measure the size of components in disrupted networks. Since the centrality map built in Module 2 is an undirected graph, a breadth-first search algorithm (Goerdt, 1997) is utilized to calculate the connected components in the graph.

From Fig7(a), it can be observed that removing those nodes with high local betweenness centrality results in greater damage to the giant connected component in initial disruption, which is highlighted in the red rectangle box. For example, compared with those nodes with high global centrality value (decreasing from 7100 to 5040), removing those nodes with high local betweenness values in R=1000m, 2000m, and 3000m reduces the giant component size from 7100 to around 2880. However, after removing 25% of nodes, R=Global has the stronger power to reduce the size of giant connect components compared with others.

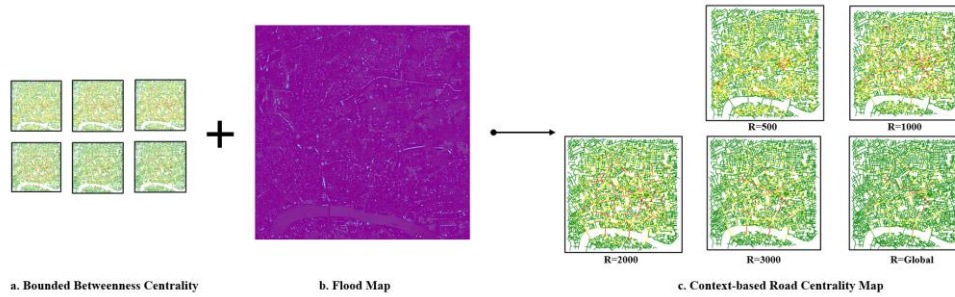


Figure 6 Context-based Bounded Centrality Map

Fig 7(b,c) gives us a lesson that, in the first and second stages, those networks with high local importance, especially R=1000m, 2000m, and 3000m, have a higher component amount and smaller average component size than those networks with high global value. In addition, compared with removing the road network with high global centrality and randomly removing nodes, removing the road network with high local leads to a significant difference in the size of network components, with relatively large fluctuations at different stages (Fig7(d, e)). Thus, removing the road network with high local centrality can quickly divide the network into smaller components in the short term. At the same time, from the perspective of the effect of network division, removing the road network with high local attributes also makes the network size more unbalanced and dispersed. Therefore, understanding the importance of these nodes at different levels can help identify and mitigate the impact of disruptions, which is particularly important for ensuring the resilience of local communities.

This paper presents three potential contributions. Firstly, a novel approach is proposed to capture nodes' local centrality, demonstrating that removing nodes with high local centrality could cause more significant damage to the network compared to traditional methods. Secondly, a new evaluation method is introduced to assess the network's performance during node disruption, focusing on the components' destructiveness and dispersibility. However, the presented approach has some limitations, 1) the absence of transportation simulation after node removal and 2) the need to rebuild the network and recalculate the component size after each node removal. Future research could explore 1) the effect of removing roads with different levels of local centrality on network robustness and travel time for commuters and 2) the development of an algorithm that can accelerate the calculation speed of component size based on previous stages.

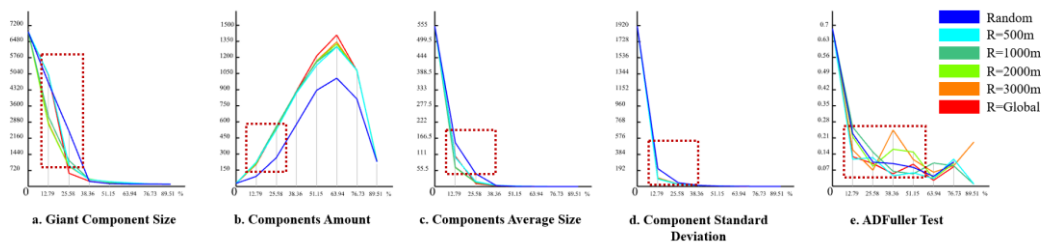


Figure 7 Indicators of Component Size List

5. Conclusion

In conclusion, floods pose a serious threat to transportation networks, and with climate change, population growth, and rapid urbanization, the frequency and severity of floods are likely to increase. To understand the effects of floods on road systems, experts use various methodologies, including percolation theory, to measure network robustness. However, examining network robustness based solely on the giant connected component may not accurately represent the impact of flooding on local communities. This paper proposes a context-based boundary centrality approach for calculating the impact of local communities on each road network segment and a novel approach for evaluating network robustness based on network component size. The case study conducted on the London transportation network validates the feasibility of these approaches. By considering the impact of local disruption, our proposed approach provides a more comprehensive and accurate assessment of network robustness and can aid in urban disaster management.

Acknowledgement

This research is funded by the 2023 WTW Research Network.

References

- Abdulla, B. et al. (2020) 'Characterization of vulnerability of road networks to fluvial flooding using SIS network diffusion model', *Journal of Infrastructure Preservation and Resilience*, 1(1), p. 6. Available at: <https://doi.org/10.1186/s43065-020-00004-z>.
- Aerts, J.C.J.H. et al. (2018) 'Integrating human behaviour dynamics into flood disaster risk assessment', *Nature Climate Change*, 8(3), pp. 193–199. Available at: <https://doi.org/10.1038/s41558-018-0085-1>.
- Albert, R. and Barabási, A.-L. (2002) 'Statistical mechanics of complex networks', *Reviews of Modern Physics*, 74(1), pp. 47–97. Available at: <https://doi.org/10.1103/RevModPhys.74.47>.
- Berezin, Y. et al. (2015) 'Localized attacks on spatially embedded networks with dependencies', *Scientific Reports*, 5(1), p. 8934. Available at: <https://doi.org/10.1038/srep08934>.
- Borgatti, S.P. and Everett, M.G. (2006) 'A Graph-theoretic perspective on centrality', *Social Networks*, 28(4), pp. 466–484. Available at: <https://doi.org/10.1016/j.socnet.2005.11.005>.
- Brandes, U. (2008) 'On variants of shortest-path betweenness centrality and their generic computation', *Social Networks*, 30(2), pp. 136–145. Available at: <https://doi.org/10.1016/j.socnet.2007.11.001>.
- Dickey, D.A. and Fuller, W.A. (1979) 'Distribution of the Estimators for Autoregressive Time Series With a Unit Root', *Journal of the American Statistical Association*, 74(366), pp. 427–431. Available at: <https://doi.org/10.2307/2286348>.
- Dong, S. et al. (2019) 'Robust component: a robustness measure that incorporates access to critical facilities under disruptions', *Journal of The Royal Society Interface*, 16(157), p. 20190149. Available at: <https://doi.org/10.1098/rsif.2019.0149>.
- Dong, S. et al. (2020) 'An integrated physical-social analysis of disrupted access to critical facilities and community service-loss tolerance in urban flooding', *Computers, Environment and Urban Systems*, 80. Available at: <https://doi.org/10.1016/j.compenvurbsys.2019.101443>.
- Farahmand, H., Dong, S. and Mostafavi, A. (2020) 'Vulnerability Assessment in Co-Located Flood Control and Transportation Networks', in M. ElAsmar, P. Tang, and D. Grau (eds) *Constr. Res. Congr.: Infrastruct. Syst. Sustain. - Sel. Papers Constr. Res. Congr. CONSTRUCTION RESEARCH CONGRESS 2020: INFRASTRUCTURE SYSTEMS AND SUSTAINABILITY*, American Society of Civil Engineers (ASCE), pp. 751–760.
- Freeman, L.C. (1977) 'A Set of Measures of Centrality Based on Betweenness', *Sociometry*, 40(1), pp. 35–41. Available at: <https://doi.org/10.2307/3033543>.
- Goerdts, A. (1997) 'The giant component threshold for random regular graphs with edge faults', in I. Prívvara and P. Ružička (eds) *Mathematical Foundations of Computer Science 1997*. Berlin, Heidelberg:

- Springer Berlin Heidelberg (Lecture Notes in Computer Science), pp. 279–288. Available at: <https://doi.org/10.1007/BFb0029971>.
- Hillier, B. and Hanson, J. (1984) *The Social Logic of Space*. Cambridge: Cambridge University Press. Available at: <https://doi.org/10.1017/CBO9780511597237>.
- Jongman, B. et al. (2015) 'Declining vulnerability to river floods and the global benefits of adaptation', *Proceedings of the National Academy of Sciences*, 112(18). Available at: <https://doi.org/10.1073/pnas.1414439112>.
- LaRocca, S. et al. (2015) 'Topological Performance Measures as Surrogates for Physical Flow Models for Risk and Vulnerability Analysis for Electric Power Systems', *Risk Analysis*, 35(4), pp. 608–623. Available at: <https://doi.org/10.1111/risa.12281>.
- Liang, Q. and Smith, L.S. (2015) 'A high-performance integrated hydrodynamic modelling system for urban flood simulations', *Journal of Hydroinformatics*, 17(4), pp. 518–533. Available at: <https://doi.org/10.2166/hydro.2015.029>.
- Loreti, S. et al. (2022) 'Local impacts on road networks and access to critical locations during extreme floods', *SCIENTIFIC REPORTS*, 12(1). Available at: <https://doi.org/10.1038/s41598-022-04927-3>.
- Mattsson, L.-G. and Jenelius, E. (2015) 'Vulnerability and resilience of transport systems – A discussion of recent research', *Transportation Research Part A: Policy and Practice*, 81, pp. 16–34. Available at: <https://doi.org/10.1016/j.tra.2015.06.002>.
- Met Office (2023) *UK and regional series*, Met Office. Available at: <https://www.metoffice.gov.uk/research/climate/maps-and-data/uk-and-regional-series> (Accessed: 15 April 2023).
- Murray, A.T. and Grubestic, T.H. (2007) 'Overview of Reliability and Vulnerability in Critical Infrastructure', in A.T. Murray and T.H. Grubestic (eds) *Critical Infrastructure: Reliability and Vulnerability*. Berlin, Heidelberg: Springer (Advances in Spatial Science), pp. 1–8. Available at: https://doi.org/10.1007/978-3-540-68056-7_1.
- Newman, M.E.J. (2003) 'The Structure and Function of Complex Networks', *SIAM Review*, 45(2), pp. 167–256. Available at: <https://doi.org/10.1137/S003614450342480>.
- Newman, M.E.J. (2010) *Networks: an introduction*. Oxford ; New York: Oxford University Press.
- Ouyang, M. et al. (2019) 'Critical Infrastructure Vulnerability to Spatially Localized Failures with Applications to Chinese Railway System', *Risk Analysis: An Official Publication of the Society for Risk Analysis*, 39(1), pp. 180–194. Available at: <https://doi.org/10.1111/risa.12708>.
- OS MasterMap Highways Network [GML3 geospatial data], Scale 1:2500, Tiles: GB, Updated: 1 October 2022, Ordnance Survey (GB), Using: EDINA Digimap Ordnance Survey Service, <<https://digimap.edina.ac.uk>>, Downloaded: 2023-04-15 10:44:02.468
- Snelder, M., van Zuylen, H.J. and Immers, L.H. (2012) 'A framework for robustness analysis of road networks for short term variations in supply', *Transportation Research Part A: Policy and Practice*, 46(5), pp. 828–842. Available at: <https://doi.org/10.1016/j.tra.2012.02.007>.
- Sullivan, J., Aultman-Hall, L. and Novak, D. (2009) 'A review of current practice in network disruption analysis and an assessment of the ability to account for isolating links in transportation networks', *Transportation Letters*, 1(4), pp. 271–280. Available at: <https://doi.org/10.3328/TL.2009.01.04.271-280>.
- Tachaudomdach, S. et al. (2018) 'A systematic review of the resilience of transportation infrastructures affected by flooding', in 2018 ASIA-PACIFIC CONFERENCE ON INTELLIGENT MEDICAL (APCIM) / 2018 7TH INTERNATIONAL CONFERENCE ON TRANSPORTATION AND TRAFFIC ENGINEERING (ICTTE 2018), pp. 176–182. Available at: <https://doi.org/10.1145/3321619.3321668>.
- Wang, W. et al. (2019) 'Local floods induce large-scale abrupt failures of road networks', *Nature Communications*, 10. Available at: <https://doi.org/10.1038/s41467-019-10063-w>.
- Xia, X., Liang, Q. and Ming, X. (2019) 'A full-scale fluvial flood modelling framework based on a high-performance integrated hydrodynamic modelling system (HiPIMS)', *Advances in Water Resources*, 132, p. 103392. Available at: <https://doi.org/10.1016/j.advwatres.2019.103392>.