



King's Research Portal

DOI:

[10.1039/D2CB00164K](https://doi.org/10.1039/D2CB00164K)

Document Version

Peer reviewed version

[Link to publication record in King's Research Portal](#)

Citation for published version (APA):

Prueller, J., Pham, T., Blower, J., Charoenphun, P., Volpe, A., Sunassee, K., Mullen, G., Blower, P., Smith, R., & Ma, M. (2022). An indium-111-labelled membrane-targeted peptide for cell tracking with radionuclide imaging. *RSC Chemical Biology*, 65-73. <https://doi.org/10.1039/D2CB00164K>

Citing this paper

Please note that where the full-text provided on King's Research Portal is the Author Accepted Manuscript or Post-Print version this may differ from the final Published version. If citing, it is advised that you check and use the publisher's definitive version for pagination, volume/issue, and date of publication details. And where the final published version is provided on the Research Portal, if citing you are again advised to check the publisher's website for any subsequent corrections.

General rights

Copyright and moral rights for the publications made accessible in the Research Portal are retained by the authors and/or other copyright owners and it is a condition of accessing publications that users recognize and abide by the legal requirements associated with these rights.

- Users may download and print one copy of any publication from the Research Portal for the purpose of private study or research.
- You may not further distribute the material or use it for any profit-making activity or commercial gain
- You may freely distribute the URL identifying the publication in the Research Portal

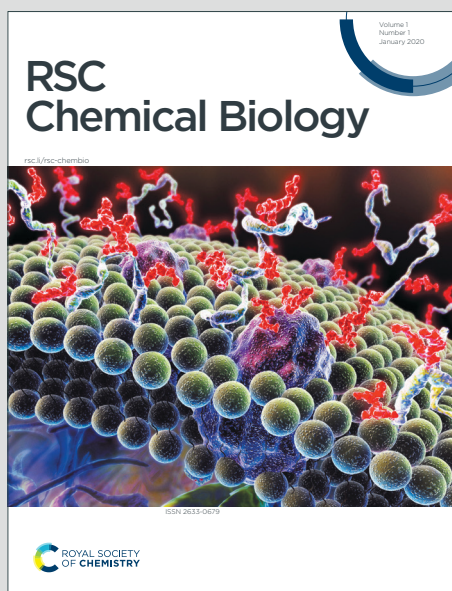
Take down policy

If you believe that this document breaches copyright please contact librarypure@kcl.ac.uk providing details, and we will remove access to the work immediately and investigate your claim.

RSC Chemical Biology

Accepted Manuscript

This article can be cited before page numbers have been issued, to do this please use: J. Pruessler, T. Pham, J. Blower, P. Charoenphun, A. Volpe, K. Sunassee, G. Mullen, R. Smith, P. J. Blower and M. Ma, *RSC Chem. Biol.*, 2022, DOI: 10.1039/D2CB00164K.



This is an Accepted Manuscript, which has been through the Royal Society of Chemistry peer review process and has been accepted for publication.

Accepted Manuscripts are published online shortly after acceptance, before technical editing, formatting and proof reading. Using this free service, authors can make their results available to the community, in citable form, before we publish the edited article. We will replace this Accepted Manuscript with the edited and formatted Advance Article as soon as it is available.

You can find more information about Accepted Manuscripts in the [Information for Authors](#).

Please note that technical editing may introduce minor changes to the text and/or graphics, which may alter content. The journal's standard [Terms & Conditions](#) and the [Ethical guidelines](#) still apply. In no event shall the Royal Society of Chemistry be held responsible for any errors or omissions in this Accepted Manuscript or any consequences arising from the use of any information it contains.

An indium-111-labelled membrane-targeted peptide for cell tracking with radionuclide imaging

Johanna Pruller,^{1,2} Truc Thuy Pham,² Julia E. Blower,² Putthiporn Charoenphun,^{2,3} Alessia Volpe,² Kavitha Sunassee,² Gregory E. D. Mullen,² Philip J. Blower,² Richard A. G. Smith,⁴ Michelle T. Ma^{*2}

¹Randall Division of Cell and Molecular Biophysics, King's College London, UK.

²School of Biomedical Engineering and Imaging Sciences, King's College London, St Thomas' Hospital, London, UK.

³Department of Diagnostic and Therapeutic Radiology, Faculty of Medicine, Ramathibodi Hospital, Mahidol University, Bangkok, Thailand.

⁴MRC Centre for Transplantation, King's College London, Guy's Hospital, London, UK.

*Corresponding author: michelle.ma@kcl.ac.uk

Abstract

Cell labelling agents that enable longitudinal *in vivo* tracking of administered cells will support the clinical development of cell-based therapies. Radionuclide imaging with gamma and positron-emitting radioisotopes can provide quantitative and longitudinal mapping of cells *in vivo*. To make this widely accessible and adaptable to a range of cell types, new, versatile and simple methods for directly radiolabelling cells are required. We have developed ¹¹¹In-DTPA-CTP, the first example of a radiolabelled peptide that binds to the extracellular membrane of cells, for tracking cell distribution *in vivo* using Single Photon Emission Computed Tomography (SPECT). ¹¹¹In-DTPA-CTP consists of (i) myristoyl groups for insertion into the phospholipid bilayer, (ii) positively charged lysine residues for electrostatic association with negatively charged phospholipid groups at the cell surface and (iii) a diethylenetriamine pentaacetate derivative that coordinates the γ -emitting radiometal, ¹¹¹In³⁺. ¹¹¹In-DTPA-CTP binds to 5T33 murine myeloma cells, enabling qualitative SPECT tracking of myeloma cells' accumulation in lungs immediately after intravenous administration. This is the first report of a radiolabelled cell-membrane binding peptide for use in cell tracking.

Keywords: indium-111, SPECT imaging, cell tracking, cell labelling, cell therapies, peptide

Background

Cell-based therapies are potentially transformative in oncological,¹ cardiac,² neurological,³ transplant⁴ and regenerative therapies.⁵ Chimeric Antigen Receptor (CAR) T-cells for treatment of leukaemia and lymphoma have recently entered the clinic, with durable responses in some patients.^{1, 6} The ability to track the migration and distribution of therapeutic cells in a living organism will (i) aid development of cell-based therapeutics, (ii) allow clinical assessment of migration and safety of small populations of cells in patients before administering larger doses, and (iii) help predict efficacy of cellular therapies and understand outcomes. Whole body *in vivo*, non-invasive cell tracking methods can give real-time information about the distribution of administered cells.⁷ Additionally, *in vivo* imaging of tumor cells labelled with contrast agents gives detailed information about their



metastatic potential in animal models.⁸ In direct cell labelling approaches, cells take up contrast agent prior to being administered to subjects or patients. Magnetic resonance imaging (with nanoparticles⁹) and optical imaging (with fluorophores¹⁰) have enabled whole body imaging of cell distribution. However, MRI requires large amounts of contrast agent, and optical methods are hampered by low tissue penetration of light for excitation and emission of fluorophores. Neither method is quantitative. Radionuclide imaging methods (Single Photon Emission Computed Tomography (SPECT) and Positron Emission Tomography (PET)) are both quantitative and more sensitive than magnetic resonance and optical imaging.¹¹

There are several strategies for direct radiolabelling of cells for PET and SPECT imaging. They include radiolabelled receptor-targeted compounds that are taken up by cell surface receptors (e.g. [¹⁸F]-FDG targeting GLUT¹², radiolabelled antibodies¹³), radiolabelled compounds with a pendant reactive group for covalent linkage to cell membrane proteins/glycoproteins (e.g. via endogenous primary amines¹⁴ or thiols¹⁵), radiolabelled nanoparticles that internalise in cells,¹⁶ and lipophilic, neutral radiometallic complexes (ionophores) that diffuse across cell membranes and dissociate, releasing their radioactive cargo inside the cell.^{17,18,19,20} Ionophores including [¹¹¹In]In-(oxine)₃¹⁹ and [^{99m}Tc]Tc-HMPAO^{20,21} have been in clinical use since the 1980s to radiolabel leukocytes, for administration to patients to image inflammation and infection with γ -scintigraphy or SPECT. Lipophilic zirconium-89- and copper-64-labelled ionophores for PET cell tracking have also been developed.^{17,18,22,23} Lastly, in recent years, elegant methods for indirect radiolabelling of cells have been developed: in this approach, cells are genetically modified with a reporter gene that leads to expression of a cell-surface receptor.²⁴⁻²⁸ The cells can then be administered to a subject or patient. A complementary radiotracer with high specificity and affinity for the receptor is subsequently used to track this introduced cell population. There are many advantages to this approach. First, the cell population can be tracked over an indefinite period of time, simply by administration of the radiotracer followed by imaging. In direct cell labelling, longitudinal cell tracking is limited by the half-life of the selected radioisotope. Second, provided that reporter gene expression is stable, this approach allows imaging and quantification of expansion or proliferation of the cell population *in vivo*. In instances where populations of cells require genetic manipulation to elicit a therapeutic response (e.g. CAR T-cells^{24, 26-28}), introduction of a reporter gene to enable radionuclide imaging is viable. However, in other instances (e.g. leukocyte imaging), the practical complexity of genetic manipulation of cells (including GMP manufacturing and safety management) is undesirable.

Herein we describe a new approach for direct radiolabelling of cells,²⁵ utilising a synthetic “cytotopic” peptide (CTP) that Richard A. G. Smith and colleagues have pioneered for attachment of functional cargo to the surface of cell membranes.²⁹⁻³⁶ CTP consists of two long-chain C₁₃ myristoyl groups for insertion into cellular lipid bilayers, and multiple lysine residues for favourable electrostatic interactions with negatively charged phospholipid groups of the cell surface membrane.^{31, 35, 37} We have prepared a radiolabelled chelator bioconjugate of a synthetic “cytotopic” peptide (CTP): to the best of our knowledge, this is the first report of a radiolabelled peptidic bioconjugate designed to associate with cell membranes, for cell tracking with radionuclide imaging. Such a construct could have potential advantages over existing cell radiolabelling platforms: (i) it localises the radionuclide to the cell membrane, increasing the distance between the radionuclide and the cell nucleus and thus potentially decreasing toxicity or impaired cellular function associated with intracellular emission of



secondary electrons (e.g. Auger electrons),^{38, 39} (ii) in contrast to methods that covalently append radiolabelled motifs to cell surface proteins,^{14, 15} our approach does not involve chemical modification of cell surface proteins, which could be detrimental to cell function and migration; (iii) it is a versatile approach that can be used for radiolabelling many cell types unlike receptor-targeted approaches¹³ that are restricted to only some cell types and cannot be applied when the target receptor is not expressed; and (iv) radiosynthesis does not require a large excess of chelator (as is required for preparations of [¹¹¹In]In-(oxine)₃, in which traces of oxine can be toxic to cells).

The cell membrane binding properties of this class of cytotopic peptide have been well characterised: both hydrophobic and electrostatic interactions contribute to stable cell membrane binding.^{35, 37} Cytotopic bioconjugates of the CTP type (Figure 1a) have been used *in vitro* and *in vivo* to anchor proteins that prevent or modulate complement activation,^{31, 32, 36} thrombosis^{30, 33} and hormone signalling²⁹ to the cell membrane. They have low systemic toxicity. A CTP-protein bioconjugate of a complement inhibitor is in clinical trials, where it is administered to kidneys prior to transplantation, to decrease transplant rejection and perfusion-related complications.³² In an *ex vivo* kidney model, a fluorescent CTP bioconjugate has demonstrated uptake and stable adherence to kidney vasculature in the presence of normal blood flow.³⁰ CTP is thus a promising agent for delivery of radioactive cargo to the surface of cells for *in vivo* cell tracking.

Results

Preparation of [¹¹¹In]In-DTPA-CTP

We elected to radiolabel CTP with the γ -emitting isotope, indium-111, as this allows direct preclinical comparison with the clinically used cell tracking agent, [¹¹¹In]In-(oxine)₃. To this end, precursor peptide, with the sequence K(α,ϵ -bis-myristoyl)-SSKSPSKDDKKPGD-C(S-(2-pyridyldithio))-OH, was reduced with tris(2-carboxyethyl)phosphine to cleave the peptide disulfide bond. The reduced peptide was then conjugated at the thiolate of its C-terminal cysteine to a derivative of the diethylenetriaminepentaacetate (DTPA) chelator that contains a pendant maleimide. DTPA was chosen because it is known to complex radiopharmaceutical concentrations of [¹¹¹In]In³⁺ rapidly and stably at room temperature,^{40, 41} for example in [¹¹¹In]In-DTPA-antibody derivatives,^{42, 43} and clinically used [¹¹¹In]In-DTPA-octreotide.⁴⁴ DTPA-CTP bioconjugate was purified using a C18 cartridge. Reaction of the pure DTPA-CTP with solutions of [¹¹¹In]In³⁺ (in aqueous 0.2 M ammonium acetate, pH 6) furnished [¹¹¹In]In-DTPA-CTP (Figure 1a) in radiochemical yields of > 96% at specific activities of 16 MBq μg^{-1} without need for post-labelling purification (Figure 1b).



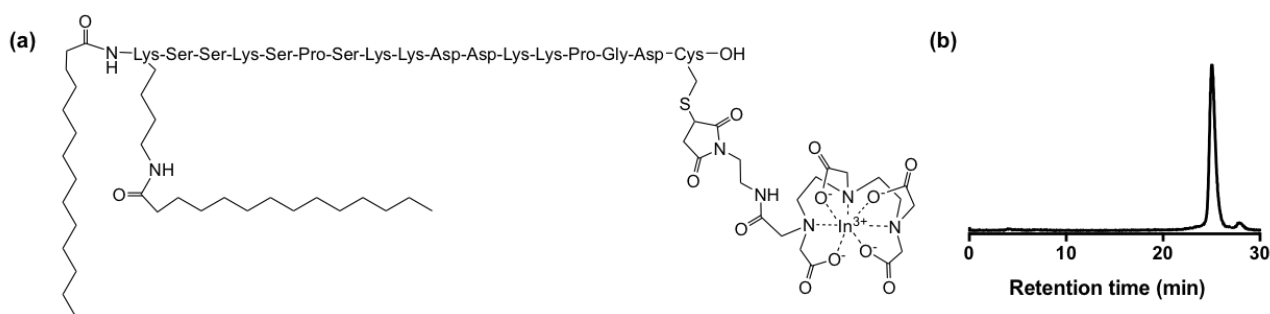


Figure 1. (a) [^{111}In]In-DTPA-CTP (b) Reverse phase C_8 HPLC radiochromatogram of [^{111}In]In-DTPA-CTP. Radiochemical yield measured > 96% at a specific activity of $16 \text{ MBq } \mu\text{g}^{-1}$.

In vitro cell binding, viability and retention

The *in vivo* migration of 5T33 murine myeloma cells in immunocompromised mouse models is well characterised,^{18,45} and so these cells were selected for radiolabelling and cell tracking studies with [^{111}In]In-DTPA-CTP.

In preliminary studies, 2×10^6 5T33 cells were incubated with [^{111}In]In-DTPA-CTP or [^{111}In]In $^{3+}$ (to quantify any uptake of indium-111 that is not CTP-mediated) in RPMI media supplemented with foetal bovine serum, for up to 6 h to establish an optimal cell radiolabelling protocol (Figure 2a). Cell uptake of [^{111}In]In $^{3+}$ was negligible. Cell radiolabelling yields for [^{111}In]In-DTPA-CTP increased over 0 – 3 h, to $3.9 \pm 0.1\% \text{AR}$ (percentage added radioactivity) with no significant gains in yield after 3 h. Thus, an incubation period of 3 h was chosen and this growth medium was used for all subsequent [^{111}In]In-DTPA-CTP 5T33 cell radiolabelling experiments.

The indium-111 uptake and efflux, and viability of [^{111}In]In-DTPA-CTP-labelled cells were compared with those of cells radiolabelled with [^{111}In]In-(oxine) $_3$ according to the clinical radiopharmaceutical protocol¹⁹ (Figure 2b-e). In these experiments, 2 MBq of either [^{111}In]In-DTPA-CTP or [^{111}In]In-(oxine) $_3$ were incubated with 1×10^5 5T33 cells. Cell pellets were obtained by centrifugation, washed and gamma-counted. The cell radiolabelling yield for [^{111}In]In-DTPA-CTP was $9.2 \pm 3.6\% \text{AR}$ – lower than that for [^{111}In]In-(oxine) $_3$, which was $20.6 \pm 6.1\% \text{AR}$ (Figure 2b). This corresponded to an average of $1.8 \pm 0.6 \text{ Bq/cell}$ for [^{111}In]In-DTPA-CTP and $4.1 \pm 1.0 \text{ Bq/cell}$ for [^{111}In]In-(oxine) $_3$. Both amounts are sufficient for clinical γ -scintigraphy or SPECT imaging.¹⁹

To measure efflux, cells were washed after radiolabelling and re-incubated in fresh growth medium for 2 – 20 h. At pre-selected time points, cells pellets were obtained, washed and gamma-counted to quantify the amount of cell-bound [^{111}In]In-DTPA-CTP (Figure 2c). Both cell radiolabelling methods resulted in efflux of indium-111 from cells, however retention was significantly higher for cells labelled with [^{111}In]In-(oxine) $_3$, with $76.0 \pm 5.1\%$ of indium-111 remaining associated with cells 2 h after re-incubation and $46.0 \pm 9.6\%$ at 20 h. For cells labelled with [^{111}In]In-DTPA-CTP, these values were $23.0 \pm 5.1\%$ at 2 h and $9.7 \pm 0.5\%$ at 20 h.

Cell viability was assessed using a trypan blue exclusion assay (Figure 2d,e). Viability for [^{111}In]In-DTPA-CTP-labelled cells remained constant throughout the course of the 20 h experiment. Prior to radiolabelling, cell viability measured $89 \pm 4\%$, with $88 \pm 2\%$ of cells viable 20 h after radiolabelling. In contrast, viability for [^{111}In]In-



(oxine)-labelled cells steadily decreased over the course of the experiment. Prior to radiolabelling, cell viability measured $96\pm 0.3\%$, with $74\pm 6\%$ of cells viable 20 h after radiolabelling.

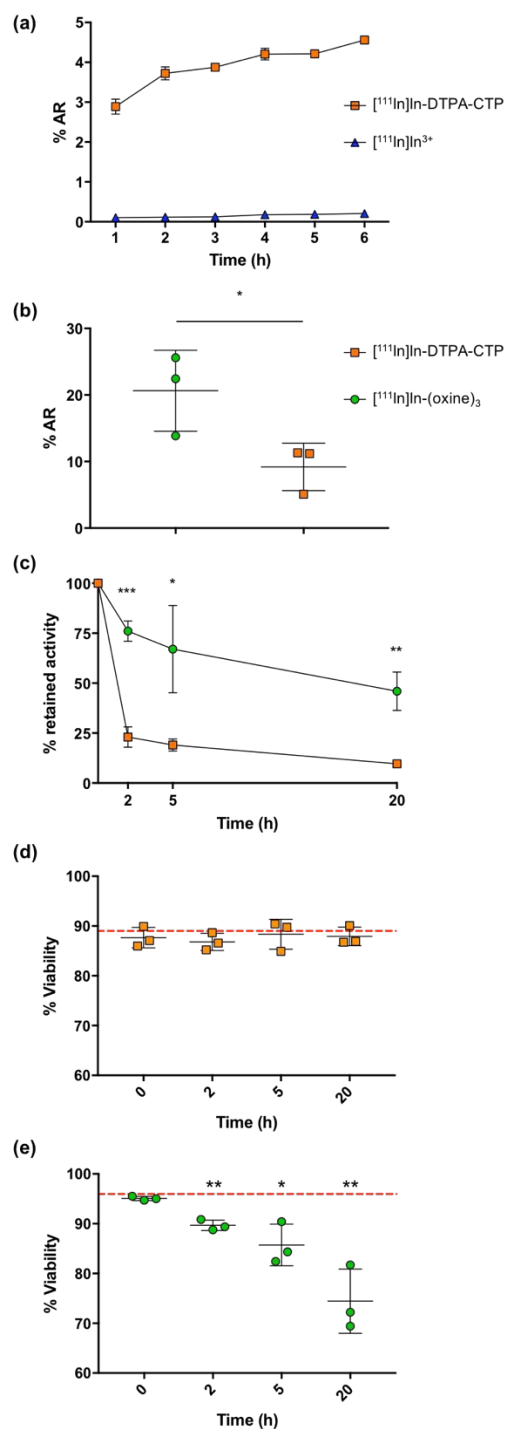


Figure 2. (a) Uptake (percentage added radioactivity, %AR) of $[^{111}\text{In}]\text{In-DTPA-CTP}$ and $[^{111}\text{In}]\text{In}^{3+}$ (each 100 kBq) in 5T33 murine myeloma cells (2×10^6) over 6 h. (b) 5T33 murine myeloma cell uptake of $[^{111}\text{In}]\text{In-DTPA-CTP}$ and $[^{111}\text{In}]\text{In}-(\text{oxine})_3$ (10^5 cells, 2 MBq of added radioactivity). (c) Indium-111 retained by cells, 2, 5 and 20 h after radiolabelling with $[^{111}\text{In}]\text{In-DTPA-CTP}$ and $[^{111}\text{In}]\text{In}-(\text{oxine})_3$. (d, e) Viability of cells immediately after labelling, as well as 2, 5 and 20 h after labelling



with either (d) [^{111}In]In-DTPA-CTP or (e) [^{111}In]In-(oxine) $_3$. Red line indicates average cell viability at the start of the experiment (before radiolabelling). Statistical significances were determined using a Student's T-test. For (a), there is substantial statistical significance ($p < 10^{-7}$) between [^{111}In]In-DTPA-CTP uptake and [^{111}In]In $^{3+}$ uptake at each time point, and error bars correspond to a standard deviation of 6 replicates. For (b) – (e), an asterisk denotes a statistical significance (* $p < 0.05$, ** $p < 0.01$, *** $p < 0.001$) between [^{111}In]In-DTPA-CTP and [^{111}In]In-(oxine) $_3$ labelling (b,c) or between different time points compared to $t = 0$ h (d,e), and error bars correspond to standard deviation of 3 biological replicates.

SPECT imaging with [^{111}In]In-DTPA-CTP

Previous studies^{18, 45} have demonstrated that in mice, 5T33 murine myeloma cells localise in the lungs 0 – 2 h post-injection (PI), followed by migration to the liver, spleen and bone marrow within 24 h. To probe the ability of [^{111}In]In-DTPA-CTP to image the distribution of administered cells *in vivo*, 5T33 cells labelled with [^{111}In]In-DTPA-CTP (4×10^6 cells, 7 – 10 MBq indium-111) were administered intravenously via the tail vein to immunodeficient NSG male mice. A SPECT/CT scan was acquired for 2 h immediately after injection (Figure 3a). For comparative purposes, (i) cell-free [^{111}In]In-DTPA-CTP (2.5 μg peptide, 3 – 3.3 MBq ^{111}In) (Figure 3b) and (ii) 5T33 cells labelled with [^{111}In]In-(oxine) $_3$ (4×10^6 cells, 1.8 – 2.4 MBq indium-111) (Figure 3c) were administered to mice in parallel, with a 2 h SPECT/CT scan acquired immediately post-injection.

[^{111}In]In-(oxine) $_3$ -labelled 5T33 cells localised to the lungs and then liver 0 – 2 h PI, consistent with prior studies (Figure 3c). Mice injected with cell-free [^{111}In]In-DTPA-CTP exhibited indium-111 activity in the blood pool and liver 0 – 2 h PI (Figure 3b). Mice injected with [^{111}In]In-DTPA-CTP-labelled cells exhibited indium-111 activity in the lungs, liver and blood pool (Figure 3a). For the latter group of mice, SPECT/CT data indicated that although some indium-111 radioactivity accumulated in the lungs 0 – 30 min PI, this decreased over the course of the next 90 min. In contrast to mice administered [^{111}In]In-(oxine) $_3$ -labelled 5T33 cells, there was significantly greater indium-111 localisation in the liver relative to the lungs.



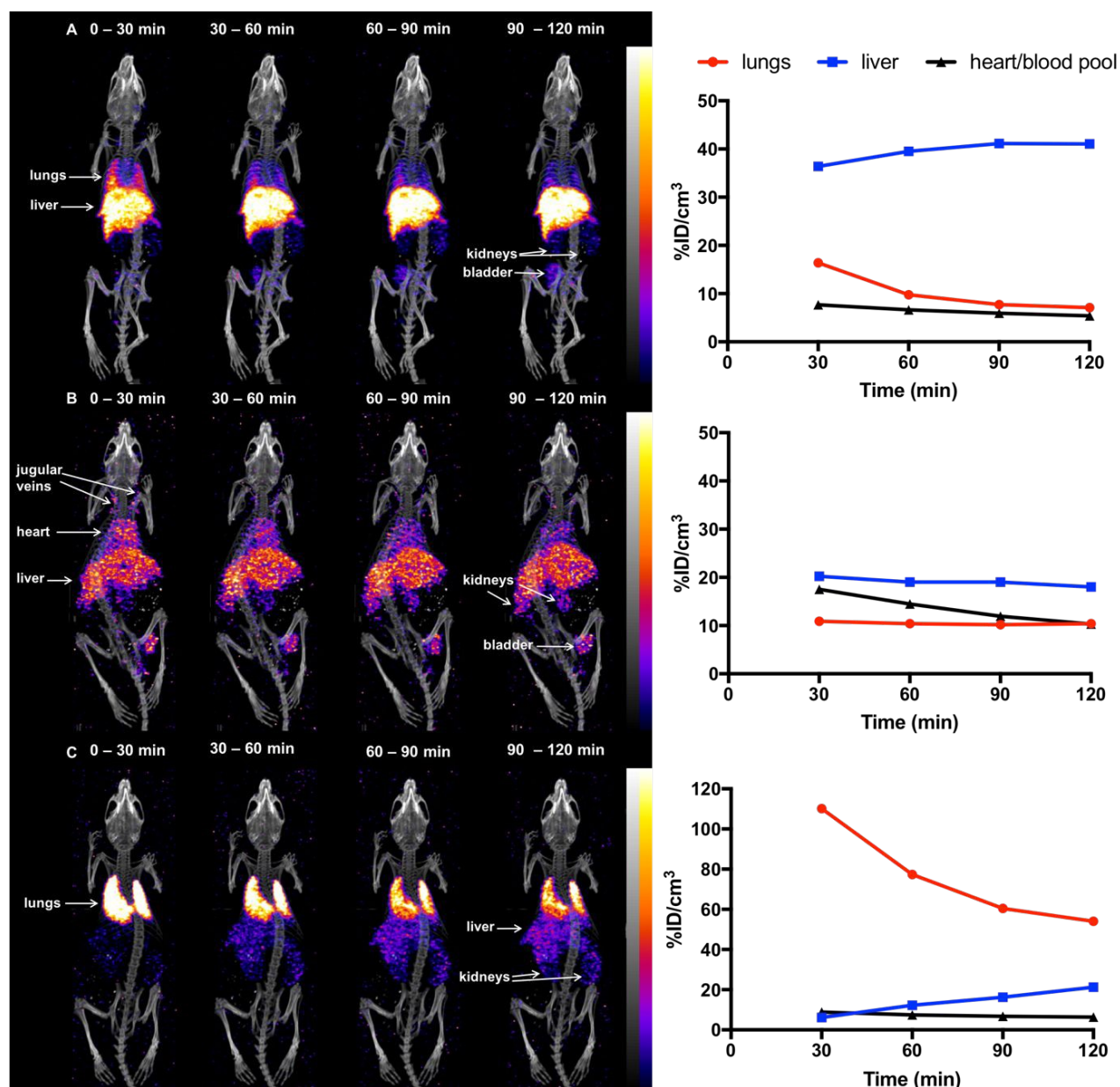


Figure 3. SPECT/CT maximum intensity projections and ^{111}In concentrations in specific organs for mice administered (a) ^{111}In In-DTPA-CTP-labelled 5T33 cells (SPECT scale of $0.8 - 8\% \text{ID g}^{-1}$), (b) ^{111}In In-DTPA-CTP (cell-free) (SPECT scale of $1.6 - 8\% \text{ID g}^{-1}$) and (c) ^{111}In In-(oxine)₃-labelled 5T33 cells (SPECT scale of $1.6 - 16\% \text{ID g}^{-1}$), acquired 0 – 30 min, 30 – 60 min, 60 – 90 min and 90 – 120 min post-injection.

At 1 day PI, SPECT/CT scans were acquired and all animals were culled, with organs harvested for *ex vivo* radioactivity counting (Figure 4). There were high concentrations of indium-111 in the liver and spleen of mice administered ^{111}In In-(oxine)₃-labelled 5T33 cells or ^{111}In In-DTPA-CTP-labelled cells, with no statistically significant differences in these organs across these two groups.



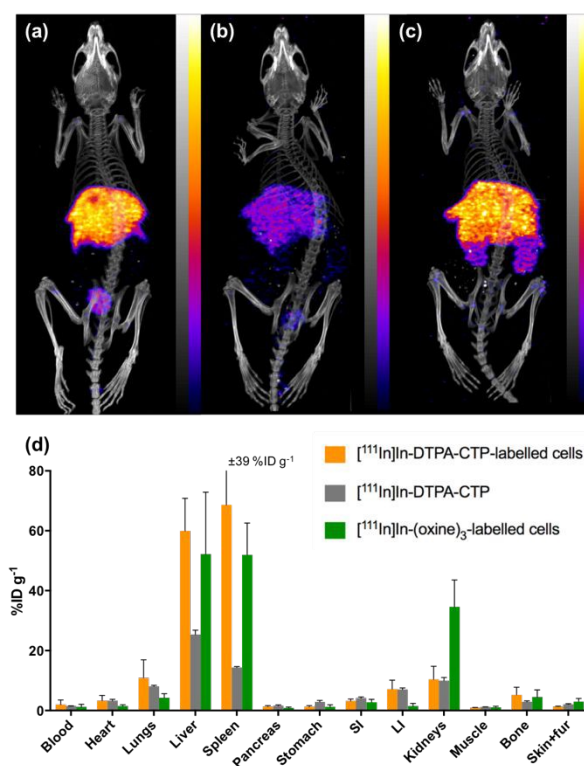


Figure 4. SPECT/CT maximum intensity projections of mice, acquired 1 day post-injection of (a) [^{111}In]In-DTPA-CTP-labelled 5T33 cells; (b) [^{111}In]In-DTPA-CTP (cell-free); (c) [^{111}In]In-(oxine)₃-labelled 5T33 cells (scale of 0.6 – 6%ID g^{-1} for all images). In all images, indium-111 is largely concentrated in the liver and spleen. (d) *Ex vivo* biodistribution of ^{111}In radioactivity in animals administered [^{111}In]In-radiotracers. Error bars represent standard deviation. For animals administered [^{111}In]In-DTPA-CTP-labelled 5T33 cells and [^{111}In]In-(oxine)₃-labelled 5T33 cells, $n = 3$, for animals administered cell-free [^{111}In]In-DTPA-CTP, $n = 2$.

We suggest that some of the initial lung indium-111 uptake observed for animals administered [^{111}In]In-DTPA-CTP-labelled cells is a result of accumulation of [^{111}In]In-DTPA-CTP-labelled 5T33 cells to the lungs. However, over the course of 0 – 2 h PI, [^{111}In]In-DTPA-CTP dissociates from 5T33 cells, resulting in indium-111 activity in the blood pool and liver 0 – 2 h PI, similar to the case of mice administered cell-free [^{111}In]In-DTPA-CTP. In contrast, [^{111}In]In-(oxine)₃-labelled cells migrate from the lungs to the liver and spleen over a longer time frame, with lower blood pool and liver localisation over 0 – 2 h PI (Figure 3) and high liver and spleen localisation by 1 day PI (Figure 4). This is consistent with data from prior studies.^{18, 45} Although animals administered [^{111}In]In-DTPA-CTP-labelled 5T33 cells demonstrate high indium-111 radioactivity accumulation in the liver and spleen 1 day PI, this is likely to be at least in part a result of accumulation of [^{111}In]In-DTPA-CTP that has dissociated from 5T33 cells.

Protein binding

To better understand the behaviour of [^{111}In]In-DTPA-CTP in biological media, a solution of [^{111}In]In-DTPA-CTP was incubated in murine serum and analysed by both size exclusion HPLC and C₈ reverse phase HPLC. C₈ chromatograms demonstrated that over the course of 24 h, greater than 70% of [^{111}In]In-DTPA-CTP remained intact (Figure 5a), with respect to the stability of the [^{111}In]In-DTPA complex. However, size exclusion chromatograms indicated that [^{111}In]In-DTPA-CTP interacted non-specifically with many serum proteins (Figure



5b-i,ii). In contrast, size exclusion chromatograms of solutions of $[^{111}\text{In}]\text{In}^{3+}$ in serum indicated that $[^{111}\text{In}]\text{In}^{3+}$ bound to one specific serum component (Figure 5b-iii).

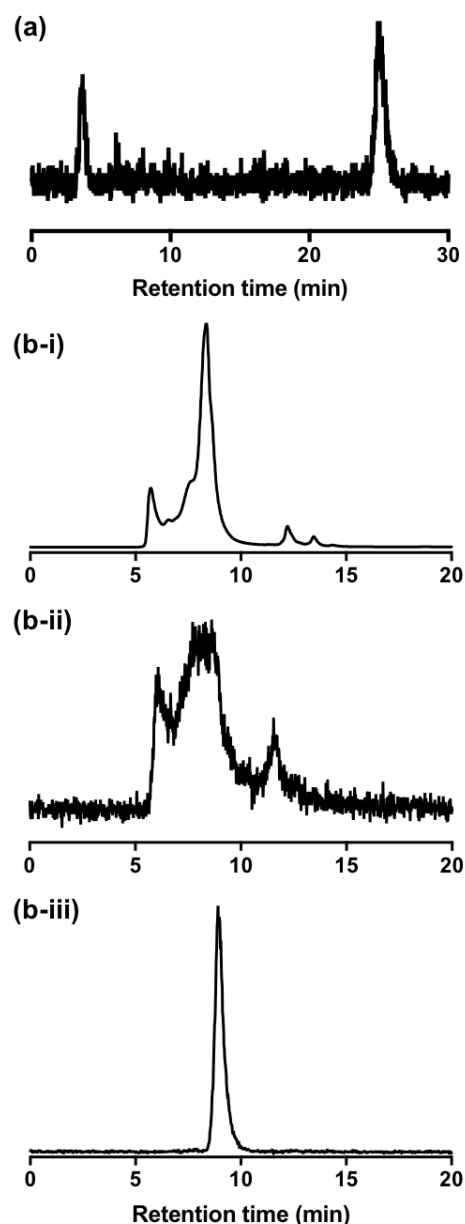


Figure 5. (a) Reverse phase C₈ HPLC radiochromatogram of $[^{111}\text{In}]\text{In-DTPA-CTP}$ after incubation in murine serum for 24 h, demonstrating that > 70% of $[^{111}\text{In}]\text{In-DTPA-CTP}$ remained intact with respect to dissociation of $[^{111}\text{In}]\text{In}^{3+}$ from the DTPA chelator. The signal at 4.1 min corresponds to $[^{111}\text{In}]\text{In}^{3+}$ released from DTPA-CTP. (b-i) Size exclusion HPLC UV chromatogram of murine serum (280 nm). (b-ii) Size exclusion HPLC radio-chromatogram of a solution of $[^{111}\text{In}]\text{In-DTPA-CTP}$ incubated with murine serum for 24 h. Comparison with the UV chromatogram indicates that $[^{111}\text{In}]\text{In-DTPA-CTP}$ interacts globally with many serum components. (b-iii) Size exclusion HPLC radio-chromatogram of a solution of $[^{111}\text{In}]\text{In}^{3+}$ incubated with murine serum for 24 h, indicating that $[^{111}\text{In}]\text{In}^{3+}$ likely binds specifically to a single serum component.



Discussion and concluding remarks

Preparation and purification of DTPA-CTP via a maleimide-thiol linkage, and subsequent quantitative, room temperature indium-111-radiolabelling of DTPA-CTP, is simple and reproducible, consistent with existing reports on [¹¹¹In]In-DTPA conjugation and radiolabelling methodology.⁴⁰⁻⁴⁴ Serum incubation studies are consistent with the known behaviour of [¹¹¹In]In-DTPA bioconjugates.^{40, 46} The majority of [¹¹¹In]In-DTPA-CTP is stable in serum with respect to [¹¹¹In]In-DTPA complex stability, although some [¹¹¹In]In³⁺ (less than 30%) is released from DTPA to serum proteins over 24 h. However, [¹¹¹In]In-DTPA-CTP adheres non-specifically to the majority of serum proteins, presumably via non-covalent electrostatic and hydrophobic interactions.

The observed serum protein binding of [¹¹¹In]In-DTPA-CTP is consistent with *in vitro* and *in vivo* data: it is likely that serum proteins compete with 5T33 cells for binding [¹¹¹In]In-DTPA-CTP, both in media *in vitro* and in circulation *in vivo*, resulting in the observed dissociation of [¹¹¹In]In-DTPA-CTP from 5T33 cell membranes. It is also likely that *in vivo*, endogenous cells compete with 5T33 myeloma cells for [¹¹¹In]In-DTPA-CTP binding. Thus, *in vivo* the association between [¹¹¹In]In-DTPA-CTP and 5T33 cell membranes is sufficient to allow visualisation of some cells' localisation to lungs at early time points, but inadequate for quantitative cell tracking over the course of several hours.

In vitro results indicate that although [¹¹¹In]In-DTPA-CTP is an inferior cell labelling reagent compared to [¹¹¹In]In-(oxine)₃ in terms of retention of radiolabel, it can deliver sufficient indium-111 to cells to enable imaging; and that over short periods of time, significant amounts of [¹¹¹In]In-DTPA-CTP are retained by labelled cells. Additionally, [¹¹¹In]In-DTPA-CTP-labelled cells are more viable than cells labelled with [¹¹¹In]In-(oxine)₃. The lower viability of [¹¹¹In]In-(oxine)₃-labelled cells could be a result of the relative higher retention of indium-111.

It is also possible that the intracellular location of ¹¹¹In in [¹¹¹In]In-(oxine)₃-labelled cells,⁴⁷ rather than the cell surface location for [¹¹¹In]In-DTPA-CTP-labelled cells, leads to a corresponding higher degree of radiation damage to nuclear DNA from emitted short-range Auger electrons.^{38, 39} The majority of PET or SPECT cell tracking agents rely on cellular internalisation of the radionuclide. There are two examples in which the radiolabelled motifs are covalently appended to endogenous cell surface molecules: (i) a “desferrioxamine” (DFO) chelator that complexes ⁸⁹Zr⁴⁺ has been covalently attached via a reactive isothiocyanate to cell surface primary amines (for PET cell tracking);¹⁴ (ii) a fluorescent motif labelled with ¹²⁴I has also been covalently attached to chemically reduced thiol groups on cell surfaces (also for PET cell tracking).¹⁵ In both instances, radiolabelling of cells did not decrease cell viability, similar to the case of [¹¹¹In]In-DTPA-CTP-labelled cells. However, it is notable that neither ⁸⁹Zr nor ¹²⁴I emit Auger electrons.

Although [¹¹¹In]In-DTPA-CTP-labelled cells show prolonged cell viability, the relatively rapid dissociation of [¹¹¹In]In-DTPA-CTP from cell membranes precludes the use of this agent for quantitative radionuclide cell tracking applications. A CTP-protein bioconjugate, APT070, that prevents organ transplant rejection, is entering clinical trials.³² Perfusion of APT070 “paints” endothelial and epithelial cells of transplant organs with a cell-surface protein that inhibits *in vivo* complement activation pathways that lead to transplant rejection. APT070 (with a molecular weight of ~24 kDa³⁴) is significantly larger than In-DTPA-CTP (2886 Da). It is likely that the increased



size of the APT070 cell-surface cargo protects the CTP tail from membrane dissociation for sufficient periods of time post-transplantation, enabling amelioration of transplant rejection.

This first cell tracking study on a radiolabelled cell membrane binding peptide has shown that [^{111}In]In-DTPA-CTP-labelled myeloma cells can be qualitatively tracked to the lungs using SPECT imaging immediately after intravenous administration. Although [^{111}In]In-DTPA-CTP dissociates from cell membranes within 1 – 2 h post-administration of cells and thus falls short of cell adhesion stability requirements for quantitative long-term cell tracking with SPECT, this proof-of-principle study demonstrates the simplicity and feasibility of using synthetic cell membrane binding/penetrating peptides for radiolabelling cells. Numerous advances in peptide research have enabled efficient cellular attachment and delivery of biomolecules, fluorescent motifs and nanoparticles either via cell membrane localisation or cell membrane penetration.⁴⁸⁻⁵¹ Such peptides will be very efficient vectors for stable delivery of radioactive cargo to cells for quantitative whole body cell tracking with SPECT or PET imaging.

Experimental methods

CTP-DTPA synthesis

CTP (K(α,ϵ -bis-myristoyl)-SSKSPSKDDKKPGD-C(S-(2-pyridyldithio))-OH) (prepared by solid phase peptide synthesis as previously described³¹) (1 mg) was reacted with tris(2-carboxyethyl)phosphine (2.5 mM) dissolved in dimethyl sulfoxide/water (15%/85%, 1 mL) for 30 min. The solution was applied to a Waters Sep-Pak C18 Plus Short cartridge and the cartridge was washed with a solution (2.5 mL) of acetonitrile/water (20%/80%) containing trifluoroacetic acid (0.1%). Reduced CTP was eluted from the cartridge with acetonitrile containing trifluoroacetic acid (0.1%), diluted in water (to a volume of 5 mL) and lyophilised. ESI-MS: m/z for $[\text{C}_{103}\text{H}_{183}\text{N}_{23}\text{O}_{30}\text{S} + 3\text{H}]^{3+}$ calc 752.78, found 752.78 (100% signal).

Reduced CTP was dissolved in aqueous ammonium acetate (20 mM) containing dimethylsulfoxide (10%) (1 mL total volume) and added to a solution containing an excess of DTPA-maleimide (50 μL , 20 g mL^{-1}) (CheMatech, France). After reaction at room temperature for 30 min, the conjugated peptide was applied to a Sep-Pak C18 Plus Short cartridge (Waters) and the cartridge was washed with a solution (2.5 mL) of acetonitrile/water (35%/65%) containing trifluoroacetic acid (0.1%). Reduced CTP was eluted from the cartridge with acetonitrile containing trifluoroacetic acid (0.1%), diluted in water (to a volume of 5 mL) and lyophilised. ESI-LRMS: m/z for $[(\text{C}_{123}\text{H}_{212}\text{N}_{28}\text{O}_{41}\text{S}) + 4\text{H}]^{4+}$ calc 693.6, found 693.6; $[(\text{C}_{123}\text{H}_{212}\text{N}_{28}\text{O}_{41}\text{S}) + 3\text{H}]^{3+}$ calc 924.5, found 924.8. ESI-HRMS: m/z for $[(\text{C}_{123}\text{H}_{212}\text{N}_{28}\text{O}_{41}\text{S}) + \text{Fe} + \text{H}]^{4+}$ calc 706.86, found 706.86. We have previously observed Fe^{3+} binding to chelators in our mass spectrometric analyses.⁵²

DTPA-CTP (300 μg) was dissolved in a solution (1 mL) of ammonium acetate (0.2 mM) containing dimethylsulfoxide (10%) and stored at $-20\text{ }^{\circ}\text{C}$ for further use.

^{111}In -CTP-DTPA radiosynthesis

A solution of [^{111}In]In $^{3+}$ (Mallinckrodt Medical B.V., Petten, Netherlands) (2 – 6 MBq in 0.1 M HCl) was added to a solution of DTPA-CTP (0.187 – 1.5 μg , in a final volume of 80 μL of 0.2 M ammonium acetate containing 5%



DMSO) and reacted at room temperature for 30 min. An aliquot of the reaction solution was applied to an analytical reverse phase C₈ HPLC column to determine radiochemical yield. HPLC chromatograms were acquired using an Agilent 1200 LC system, with an Agilent Eclipse XDB-C8 5 μM, 4.6 × 250 mm column coupled to a LabLogic Flow-Count detector with a sodium iodide probe (B-FC-3200). Gradient conditions: 1 mL min⁻¹ flow rate, with 100% A at 0 min, with the concentration of B increasing at a rate of 5% min⁻¹.

[¹¹¹In]In-(oxine)₃ radiosynthesis

[¹¹¹In]In-(oxine)₃ was prepared using previously described methods¹⁸. An aqueous solution of [¹¹¹In]In³⁺ (50 MBq) diluted in water (500 μL) was added to a solution of 8-hydroxyquinoline in chloroform (50 μL, 10 mg mL⁻¹). The biphasic mixture was vigorously mixed using a vortex for 5 min. A further aliquot of chloroform (450 μL) was added and the solution mixed using a vortex for 10 min. The chloroform phase was collected and chloroform was evaporated by heating the solution at 50 °C. The residue, containing [¹¹¹In]In-(oxine)₃ was dissolved in PBS containing dimethyl sulfoxide (2%).

Cell culture

5T33 myeloma cells stably expressing GFP, originating from C57Cl/KaLwRij strain⁵³, were cultured in RPMI media supplemented with 10% FBS, 1% L-Glutamine and 1% P/S. Cells were sub-cultured every two to three days at a ratio of 1:10.

[¹¹¹In]In-CTP-DTPA cell uptake studies

5T33 myeloma cells (2 × 10⁶, in 200 μL) were incubated in suspension with [¹¹¹In]In-DTPA-CTP (0.1 MBq, 1.2 μg of DTPA-CTP) at 37 °C in RPMI media. The cells were washed with PBS after 1, 2, 3, 4, 5 and 6 h. Activity in both the supernatant (original supernatant and washes) and cell pellet was measured using a γ-counter.

Comparative uptake, viability and efflux studies

5T33 myeloma cells (10⁵, in 200 μL) were incubated with [¹¹¹In]In-DTPA-CTP (2 MBq, 1.2 μg of DTPA-CTP) for 3 h or [¹¹¹In]In-(oxine)₃ (2 MBq) for 30 min at 37 °C. [¹¹¹In]In-DTPA-CTP cell labelling was undertaken in serum-containing growth media. [¹¹¹In]In-(oxine)₃ cell labelling was undertaken in serum-free growth media. After cell labelling, cells were washed twice with PBS and 300 μL of fresh growth media was added. Uptake efficiency was quantified at this time-point by measuring pellet and supernatant in the γ-counter. At 2, 5 and 20 h after addition of fresh media, cells were washed twice and activity in both the supernatant (original supernatant and washes) and pellet was measured using a γ-counter. Efflux was quantified as the activity of the supernatant divided by the total activity (supernatant + pellet). Cell viability was assessed prior to radiolabelling and at each time point by trypan blue exclusion.⁵⁴

Serum stability studies

[¹¹¹In]In-DTPA-CTP (2 MBq, 1.2 μg peptide) or [¹¹¹In]In³⁺ (2 MBq) were incubated in 200 μL mouse serum for 24 h and subsequently analysed using both C₈ and size exclusion HPLC. For C₈ analysis, serum proteins were precipitated by addition of 200 μL acetonitrile to each sample, followed by centrifugation and separation of



supernatant from pellet. The supernatant was applied to an analytical reverse phase C₈ HPLC column using conditions described above. For size exclusion, the sample was centrifuged to remove any particulate matter and the supernatant applied to an analytical size exclusion column. Analytical size exclusion radio-HPLC traces were acquired using an Agilent 1200 Series HPLC system and a Phenomenex Biosep 2000 (300 x 7.8 mm) size exclusion column, coupled to a LabLogic Flow-Count detector with a sodium iodide probe (B-FC-3200). Isocratic mobile phase conditions: 1 mL min⁻¹ flow rate of phosphate buffered saline solution.

SPECT/CT imaging and biodistribution

Animal imaging studies were ethically reviewed by an Animal Welfare & Ethical Review Board at King's College London and carried out in accordance with the Animals (Scientific Procedures) Act 1986 (ASPA) UK Home Office regulations governing animal experimentation. NSG male mice (6 weeks old) were injected intravenously under isoflurane anaesthesia, with either [¹¹¹In]In-DTPA-CTP-labelled 5T33 cells (4 × 10⁶ cells, 7 – 10 MBq, n = 3), [¹¹¹In]In-DTPA-CTP (cell-free) (2.5 µg peptide, 3 – 3.3 MBq, n = 2), or [¹¹¹In]In-(oxine)₃-labelled 5T33 cells (4 × 10⁶ cells, 1.8 – 2.4 MBq, n = 3) via the tail vein. Animals were maintained under isoflurane inhalation anaesthesia (2 – 2.5% Isoflurane in air) for 2 h post-injection. For one animal in each of these groups, a SPECT/CT scan was acquired on a dedicated small animal SPECT system, NanoSPECT/CT Silver Upgrade (Mediso Ltd., Budapest, Hungary), calibrated for indium-111. The whole body SPECT scan time was 30 min × 4, (conducted sequentially) with a frame time of 40 s (using a 4-head scanner with 4 × 9 [1.4 mm] pinhole collimators in helical scanning mode) followed by a helical CT (45 kVp X-ray source, 1000 ms exposure time in 180 projections over 7.5 min). After this, animals were allowed to recover. SPECT/CT scans were acquired again, 1 day PI, after which all animals were culled (by increasing the dose of anaesthesia followed by cervical dislocation to confirm death) and organs/tissues harvested, weighed and radioactivity counted using a gamma counter. SPECT/CT images were reconstructed in a 256 × 256 matrix using HiSPECT (Scivis GmbH), a reconstruction software package and visualised and quantified using VivoQuant VivoQuant v.3.0 software (InVivo LLC., Boston, USA).

Abbreviations

%AR (percentage added radioactivity), %ID (percentage injected dose), CAR (chimeric antigen receptor), CT (computed tomography), CTP (cytotopic peptide), DTPA (diethylenetriamine pentaacetate), HPLC (high performance liquid chromatography), PET (positron emission tomography), PI (post-injection), SPECT (single photon emission computed tomography)

Declarations

Ethical Approval and Consent to participate

All animal experiments on mice complied with the Animals (Scientific Procedures) Act (UK 1986) and Home Office (UK) guidelines. No human participants were involved in this study.



Consent for publication

Not applicable.

Availability of supporting data

All data generated and analysed during this study are included in this manuscript.

Competing interests

There are no conflicts to declare.

Funding

J.P. was supported by a Wellcome Trust PhD Studentship (203949/Z/16/Z) with the Cell Therapies and Regenerative Medicine PhD Programme. This research was supported by a Wellcome Trust Seed Award in Science (201959/Z/16/Z), a Cancer Research UK Career Establishment Award (C63178/A24959), the Centre of Excellence in Medical Engineering Centre funded by the Wellcome Trust and EPSRC (203148/Z/16/Z), the KCL and UCL Comprehensive Cancer Imaging Centre funded by CRUK and EPSRC in association with the MRC and DoH (England) and by the NIHR Biomedical Research Centre at Guy's and St Thomas' NHS Foundation Trust and King's College London. The views expressed are those of the author(s) and not necessarily those of the NHS, the NIHR or the DoH.

Authors' contributions

J.P. contributed to the study design, prepared the radiotracers, undertook *in vitro* and *in vivo* experiments, analysed data and co-wrote the manuscript, J.E.B, M.M., A.V. and K.S. contributed to the study design and *in vivo* experiments, P.C. contributed to the study design and undertook preliminary *in vitro* experiments, G.E.D.M and P.B. contributed to the study design and co-wrote the manuscript, R.A.G.S. contributed peptide and contributed to the study design, M.T.M. led study design, supervised the project and led compilation of the manuscript.

Acknowledgements

Not applicable.

Authors' information

Not applicable.

References

1. C. H. June and M. Sadelain, *N. Engl. J. Med.*, 2018, **379**, 64-73.
2. P. Menasché, *Nat. Rev. Cardiol.*, 2018, **15**, 659-671.
3. K.-C. Sonntag, B. Song, N. Lee, J. H. Jung, Y. Cha, P. Leblanc, C. Neff, S. W. Kong, B. S. Carter, J. Schweitzer and K.-S. Kim, *Prog. Neurobiol.*, 2018, **168**, 1-20.
4. S. Alagesan and M. D. Griffin, *Curr. Opin. Organ Transplant.*, 2014, **19**, 65-72.
5. M. R. Alison and W.-R. Lin, *Nat. Rev. Gastroenterol. Hepatol.*, 2015, **12**, 610-611.
6. S. Feins, W. Kong, E. F. Williams, M. C. Milone and J. A. Fraietta, *Am J Hematol.*, 2019, **94**, S3-S9.



7. P. Jha, D. Golovko, S. Bains, D. Hostetter, R. Meier, M. F. Wendland and H. E. Daldrup-Link, *Cancer Res.*, 2010, **70**, 6109-6113.
8. A. J. Minn, Y. Kang, I. Serganova, G. P. Gupta, D. D. Giri, M. Doubrovin, V. Ponomarev, W. L. Gerald, R. Blasberg and J. Massague, *J. Clin. Invest.*, 2005, **115**, 44-55.
9. E. T. Ahrens and J. W. M. Bulte, *Nat. Rev. Immunol.*, 2013, **13**, 755-763.
10. F. Prohazky, M. J. Dallman and C. C. Lo, *Interface Focus*, 2013, **3**, 20130001.
11. J. M. Leech, E. Sharif-Paghaleh, J. Maher, L. Livieratos, R. I. Lechler, G. E. Mullen, G. Lombardi and L. A. Smyth, *Clin. Exp. Immunol.*, 2013, **172**, 169-177.
12. M. Hofmann, K. C. Wollert, G. P. Meyer, A. Menke, L. Arseniev, B. Hertenstein, A. Ganser, W. H. Knapp and H. Drexler, *Circulation*, 2005, **111**, 2198-2202.
13. C. M. Griessinger, A. Maurer, C. Kesenheimer, R. Kehlbach, G. Reischl, W. Ehrlichmann, D. Bukala, M. Harant, F. Cay, J. Brück, R. Nordin, U. Kohlhofer, H.-G. Rammensee, L. Quintanilla-Martinez, M. Schaller, M. Röcken, B. J. Pichler and M. Kneilling, *Proc. Natl. Acad. Sci.*, 2015, **112**, 1161-1166.
14. A. Bansal, M. K. Pandey, Y. E. Demirhan, J. J. Nesbitt, R. J. Crespo-Diaz, A. Terzic, A. Behfar and T. R. DeGrado, *EJNMMI Res.*, 2015, **5**, 1-11.
15. T. T. Pham, Z. Lu, C. Davis, C. Li, F. Sun, J. Maher and R. Yan, *Bioconjugate Chem.*, 2020, **31**, 1107-1116.
16. S.-H. Cheng, D. Yu, H.-M. Tsai, R. A. Morshed, D. Kanojia, L.-W. Lo, L. Leoni, Y. Govind, L. Zhang, K. S. Aboody, M. S. Lesniak, C.-T. Chen and I. V. Balyasnikova, *J. Nucl. Med.*, 2016, **57**, 279-284.
17. N. Adonai, K. N. Nguyen, J. Walsh, M. Iyer, T. Toyokuni, M. E. Phelps, T. McCarthy, D. W. McCarthy and S. S. Gambhir, *Proc. Natl. Acad. Sci.*, 2002, **99**, 3030-3035.
18. P. Charoenphun, L. K. Meszaros, K. Chuamsaamarkkee, E. Sharif-Paghaleh, J. R. Ballinger, T. J. Ferris, M. J. Went, G. E. D. Mullen and P. J. Blower, *Eur. J. Nucl. Med. Mol. Imaging*, 2015, **42**, 278-287.
19. M. Roca, V. E. F. J. de, F. Jamar, O. Israel and A. Signore, *Eur. J. Nucl. Med. Mol. Imaging*, 2010, **37**, 835-841.
20. J. J. Lukawska, L. Livieratos, M. O'Doherty, J. R. Ballinger, B. M. Sawyer, E. Sharif-Paghaleh, G. E. D. Mullen, T. Lee, P. J. Blower, M. Kofi, G. Gnanasegaran and C. J. Corrigan, *EBioMedicine*, 2014, **1**, 173-180.
21. J. J. Lukawska, L. Livieratos, B. M. Sawyer, T. Lee, M. O'Doherty, P. J. Blower, M. Kofi, J. R. Ballinger, C. J. Corrigan, G. Gnanasegaran, E. Sharif-Paghaleh and G. E. D. Mullen, *J. Allergy Clin. Immunol.*, 2014, **133**, 233-239.e231.
22. F. Man, L. Lim, A. Volpe, A. Gabizon, H. Shmeeda, B. Draper, A. C. Parente-Pereira, J. Maher, P. J. Blower, G. O. Fruhwirth and R. T. M. de Rosales, *Molecular Therapy*, 2019, **27**, 219-229.
23. F. Man, A. A. Khan, A. Carrascal-Miniño, P. J. Blower and R. T. M. de Rosales, *Nucl. Med. Biol.*, 2020, **90-91**, 31-40.
24. K. V. Keu, T. H. Witney, S. Yaghoubi, J. Rosenberg, F. Habte, S. S. Gambhir, K. V. Keu, T. H. Witney, A. Kurien, R. Magnusson, B. Badie, J. Williams, M. Allen-Auerbach, J. Czernin, J. R. Wagner, S. Forman, C. Brown, W. Tang, M. C. Jensen and S. S. Gambhir, *Sci. Transl. Med.*, 2017, **9**.
25. A. T. Mayer and S. S. Gambhir, *J. Nucl. Med.*, 2018, **59**, 1174-1182.
26. M. A. Sellmyer, S. A. Richman, K. Lohith, C. Hou, C.-C. Weng, R. H. Mach, R. S. O'Connor, M. C. Milone and M. D. Farwell, *Molecular Therapy*, 2020, **28**, 42-51.
27. N. Emami-Shahri, J. Foster, R. Kashani, P. Gazinska, C. Cook, J. Sosabowski, J. Maher and S. Papa, *Nat. Commun.*, 2018, **9**, 1081.
28. I. Minn, D. J. Huss, H.-H. Ahn, T. M. Chinn, A. Park, J. Jones, M. Brummet, S. P. Rowe, P. Sysa-Shah, Y. Du, H. I. Levitsky and M. G. Pomper, *Sci. Adv.*, 2019, **5**, eaaw5096.
29. C. E. Bowles, I. Wilkinson, R. A. G. Smith, A. J. G. Moir, H. Montgomery and R. J. M. Ross, *Endocrinology*, 2007, **148**, 824-830.
30. K. Hamaoui, S. Gowers, M. Boutelle, T. H. Cook, G. Hanna, A. Darzi, R. Smith, A. Dorling and V. Papalois, *Transplantation*, 2016, **100**, e128-e139.
31. A. Hill, S. H. Ridley, D. Esser, R. G. Oldroyd, M. J. Cullen, P. Kareclas, S. Gallagher, G. P. Smith, S. J. Richards, J. White, R. A. G. Smith and P. Hillmen, *Blood*, 2006, **107**, 2131-2137.



32. T. Kassimatis, A. Qasem, A. Douiri, E. G. Ryan, I. Rebollo-Mesa, L. L. Nichols, R. Greenlaw, J. Olsburgh, R. A. Smith, S. H. Sacks and M. Drage, *Trials*, 2017, **18**, 255.
33. M. Manook, J. Kwun, K. Samy, M. Mulvihill, J. Yoon, H. Xu, A. L. MacDonald, K. Freischlag, V. Curfman, E. Branum, D. Howell, S. Knechtle, M. Manook, N. Mamode, C. Burghuber, A. B. Farris, R. A. Smith, S. Sacks and A. Dorling, *Am. J. Transplant.*, 2017.
34. J. R. Pratt, M. E. Jones, J. Dong, W. Zhou, P. Chowdhury, R. A. G. Smith and S. H. Sacks, *Am. J. Pathol.*, 2003, **163**, 1457-1465.
35. G. P. Smith and R. A. G. Smith, *Mol. Immunol.*, 2001, **38**, 249-255.
36. F. Xiao, L. Ma, M. Zhao, R. A. Smith, G. Huang, P. M. Jones, S. Persaud, A. Pingitore, A. Dorling, R. Lechler and G. Lombardi, *Br. J. Pharmacol.*, 2016, **173**, 575-587.
37. S. McLaughlin and A. Aderem, *Trends Biochem. Sci.*, 1995, **20**, 272-276.
38. B. Nowak, C. Weber, A. Schober, U. Zeiffer, E. A. Liehn, H. P. von, P. Reinartz, W. M. Schaefer and U. Buell, *Eur. J. Nucl. Med. Mol. Imaging*, 2007, **34**, 715-721.
39. F. J. Gildehaus, F. Haasters, I. Drosse, E. Wagner, C. Zach, W. Mutschler, P. Cumming, P. Bartenstein and M. Schieker, *Mol. Imaging Biol.*, 2011, **13**, 1204-1214.
40. Y. Arano, T. Uezono, H. Akizawa, M. Ono, K. Wakisaka, M. Nakayama, H. Sakahara, J. Konishi and A. Yokoyama, *J. Med. Chem.*, 1996, **39**, 3451-3460.
41. B. K. Giersing, M. T. Rae, M. CarballidoBrea, R. A. Williamson and P. J. Blower, *Bioconjugate Chem.*, 2001, **12**, 964-971.
42. E. N. Sabbah, J. Kadouche, D. Ellison, C. Finucane, D. Decaudin and S. J. Mather, *Nucl. Med. Biol.*, 2007, **34**, 293-304.
43. M. Brom, L. Joosten, W. J. G. Oyen, M. Gotthardt and O. C. Boerman, *EJNMMI Research*, 2012, **2**, 4.
44. W. H. Bakker, R. Albert, C. Bruns, W. A. P. Breeman, L. J. Hofland, P. Marbach, J. Pless, D. Pralet, B. Stolz, J. W. Koper, S. W. J. Lamberts, T. J. Visser and E. P. Krenning, *Life Sci.*, 1991, **49**, 1583-1591.
45. K. Vanderkerken, K. Asosingh, P. Croucher and B. Van Camp, *Immunol. Rev.*, 2003, **194**, 196-206.
46. E. P. Krenning, W. H. Bakker, P. P. Kooij, W. A. Breeman, H. Y. Oei, J. M. de, J. C. Reubi, T. J. Visser, C. Bruns and D. J. Kwেকেboom, *J. Nucl. Med.*, 1992, **33**, 652-658.
47. M. R. B. Puncher and P. J. Blower, *J. Nucl. Med.*, 1995, **36**, 499-505.
48. J. E. Dixon, G. Osman, G. E. Morris, H. Markides, M. Rotherham, Z. Bayoussef, A. J. El Haj, C. Denning and K. M. Shakesheff, *Proc. Natl. Acad. Sci.*, 2016, **113**, E291-E299.
49. M. Rizzuti, M. Nizzardo, C. Zanetta, A. Ramirez and S. Corti, *Drug Discov. Today*, 2015, **20**, 76-85.
50. M.-A. Sani and F. Separovic, *Acc. Chem. Res.*, 2016, **49**, 1130-1138.
51. H. Liu, F. Zeng, M. Zhang, F. Huang, J. Wang, J. Guo, C. Liu and H. Wang, *J. Control. Release*, 2016, **226**, 124-137.
52. C. Imberti, S. Y. A. Terry, C. Cullinane, F. Clarke, G. H. Cornish, N. K. Ramakrishnan, P. Roselt, A. P. Cope, R. J. Hicks, P. J. Blower and M. T. Ma, *Bioconjugate Chem.*, 2017, **28**, 481-495.
53. J. Radl, J. W. Croese, C. Zurcher, d. E.-V. M. H. Van and L. A. M. de, *Am J Pathol*, 1988, **132**, 593-597.
54. W. Strober, "Trypan Blue Exclusion Test of Cell Viability," in *Current Protocols in Immunology*, J. E. Coligan, B. E. Bierer, D. H. Margulies, E. M. Shevach, and W. Strober, Eds. Hoboken, NJ, USA: John Wiley & Sons, Inc., 2001.

