



OPEN ACCESS

EDITED BY

Ben Nephew,
Worcester Polytechnic Institute,
United States

REVIEWED BY

Monica Verrico,
Sapienza University of Rome, Italy
Baltasar Pérez Saborido,
Hospital Universitario Río Hortega, Spain

*CORRESPONDENCE

Jianwu Wu
✉ wusi1981@sina.com
Xinwei Jiang
✉ jxw19681022@163.com

†These authors have contributed equally to this work and share first authorship

RECEIVED 08 June 2023

ACCEPTED 08 September 2023

PUBLISHED 26 September 2023

CITATION

Zhang C, Niu W, Xu Y, Lu Y, Huang L, Li S, Jiang X and Wu J (2023) Multivisceral resection of nonfunctional pancreatic neuroendocrine neoplasm with nearby organ invasion: a case report. *Front. Endocrinol.* 14:1236685. doi: 10.3389/fendo.2023.1236685

COPYRIGHT

© 2023 Zhang, Niu, Xu, Lu, Huang, Li, Jiang and Wu. This is an open-access article distributed under the terms of the [Creative Commons Attribution License \(CC BY\)](https://creativecommons.org/licenses/by/4.0/). The use, distribution or reproduction in other forums is permitted, provided the original author(s) and the copyright owner(s) are credited and that the original publication in this journal is cited, in accordance with accepted academic practice. No use, distribution or reproduction is permitted which does not comply with these terms.

Multivisceral resection of nonfunctional pancreatic neuroendocrine neoplasm with nearby organ invasion: a case report

Cong Zhang[†], Weiqiao Niu[†], Yaopeng Xu[†], Yijie Lu, Lining Huang, Song Li, Xinwei Jiang* and Jianwu Wu*

Department of Hepatobiliary Surgery, The Affiliated Suzhou Hospital of Nanjing Medical University, Gusu School, Nanjing Medical University, Suzhou, China

Pancreatic neuroendocrine neoplasms (pNENs) are relatively rare epithelial malignancies originating from pancreatic neuroendocrine cells, pathologically classified into well-differentiated pancreatic neuroendocrine tumors (pNETs) and poorly-differentiated pancreatic neuroendocrine carcinoma (pNECs). Although they also fall under the category of pNENs, the almost entirely distinct biological characteristics and survival prognosis have caused debate among surgeons when it comes to the development of surgical intervention options, particularly for locally advanced G3 pNETs and pNECs. We present a case of 66-year-old male with nonfunctional G3 pNET, invasion of five nearby pancreatic organs and type II liver metastases. The patient achieved good outcomes after undergoing multivisceral resection and postoperative adjuvant chemotherapy. This finding helps surgeons better understand locally advanced pNENs, formulate treatment decisions systematically and confidently, and balance patient benefits and risks of surgery.

KEYWORDS

pancreatic neuroendocrine neoplasm, multivisceral resection, invasion, liver metastasis, debulking surgery

Introduction

Pancreatic neuroendocrine neoplasms (pNENs) are relatively rare epithelial malignancies originating from pancreatic neuroendocrine cells, and their incidence and frequency have steadily risen over the decades (1). pNENs typically develop insidiously with highly heterogeneous biological behaviors. Based on mitotic count and the Ki-67 proliferation index, pNENs are classified as well-differentiated G1, G2, and G3 pancreatic neuroendocrine tumors (pNETs) or poorly-differentiated pancreatic neuroendocrine carcinomas (pNECs) (2). They may undergo transformation as the disease progresses,

manifesting as inert growth, aggressive growth, or even early metastasis. Therefore, there are various hurdles and unresolved issues in clinical disease diagnosis and therapy.

Surgery is the major strategy for achieving a good long-term prognosis for pNENs. They can be classified into resectable, borderline resectable, and locally advanced tumors according to the stage and surgical possibility (3, 4). Among them, borderline resectable and distant metastatic tumors often increase the difficulty of surgery due to invasion of nearby organs or a significant tumor load, including the expansion of the scope of surgery and the inability to achieve radical resection (5). It is worth noting that there is ongoing debate among surgeons on the survival and symptomatic benefits of surgery for patients with locally advanced and metastatic pNENs, particularly G3 pNETs and pNECs (6). The survival advantages and symptom improvement brought by surgery may be superior to systemic comprehensive treatment, according to increasing amounts of evidence (7–11). This unquestionably serves as a compelling reason for doctors to determine whether to have surgery, even while the procedure is still scheduled.

We herein report a valuable case in which a patient with nonfunctional G3 pNET experienced local invasion of five abdominal organs and liver metastasis. The surgical procedure and postoperative adjuvant therapy enhanced the patient's long-term survival rate and quality of life.

Case description

A 66-year-old male patient was hospitalized in April 2022, complaining of a massive retroperitoneal tumor that was revealed by health screen half a month ago. A hypochoic lesion measuring

up to 110 mm by 60 mm was seen on the initial ultrasound scan in the region of the left kidney and the spleen.

After admission, the patient underwent a comprehensive and systematic examination. The patient's physical examination showed no obvious positive signs, and his overall condition was acceptable according to the preoperative laboratory results (Table 1). Importantly, no obvious abnormalities were found in common tumor markers, and hormone levels used for differential diagnosis of functional endocrine tumors were within normal limits. The patient underwent an abdominal contrast-enhanced computed tomography (CT) scan, as follows (Figures 1A–D): there was a 8.1×6.0×7.9 cm solid mass of the left adrenal gland involving the pancreatic tail, serosal surface of the gastric fundus, and spleen with splenic infarction. The tumor thrombi invaded the splenic artery, resulting in stenosis of the arterial lumen, and tumor thrombi were also seen in the splenic vein. Two metastatic tumors could be seen in the left lobe of the liver. CT image data stored in the form of DICOM was imported into Yorktal 3D+Visualization System for 3D visualization reconstruction (Figure 1E).

In order to further diagnose the nature and origin of the tumor, the patient underwent an ultrasound-guided puncture biopsy of the tumor tissue in the left adrenal gland and a biopsy of gastric fundus tissue under a gastroscope. Hematoxylin and eosin (HE) staining of two specimens both suggested tumor cells showed a nest-like distribution, neoplastic cells with polygonal shape, abundant and acidophilic cytoplasm, mild nuclear atypia without necrosis, and rare nucleoli (Figures 2A, D). Immunohistochemistry staining revealed that the tumor cells were positive for chromogranin A (CgA) (Figures 2B, E), synaptophysin (Syn), cytokeratin 18 (CK18) and negative for inhibin, CEA, calretinin, epithelial membrane antigen (EMR), vimentin, Melan-A, Pax-8, SF-1, P53, S-100. The Ki-67 index was 10% in the specimen of the adrenal lesion (Figure 2C) and 20% in the specimen of

TABLE 1 The preoperative laboratory data.

Hematology					Coagulation			
WBC	3.68×10 ⁹	/L	ALP	76	U/L	PT	12.9	Sec↑
RBC	3.92×10 ¹²	/L↓	γ-GTP	29	U/L	APTT	28.8	sec
Hb	106	g/L↓	CHE	267	U/L			
PLT	168×10 ⁹	/L	BUN	6.45	mmol/L			
			Cre	74.0	μmol/L			
			Na	144.7	mmol/L	Serology		
TP	68.1	g/L	K	4.27	mmol/L	CRP	3.64	mg/L↑
Alb	39.36	g/L	Cl	109.7	mmol/L			
TBIL	8.5	μmol/L	Ca	2.17	mmol/L	Tumor marker		
DBIL	2.7	μmol/L	FPG	5.57	mmol/L	CEA	1.73	ng/mL
GPT	9	U/L	TG	2.81	mmol/L	AFP	2.80	ng/mL
GOT	11	U/L↓	TC	2.89	mmol/L	CA19-9	12.30	U/mL
LDH	128	U/L				CYFRA21_1	2.15	ng/mL↑

WBC, white blood cell; RBC, red blood cell; Hb, hemoglobin; PLT, platelet count; TP, total protein; Alb, albumin; TBIL, total bilirubin; DBIL, direct bilirubin; GPT, glutamic pyruvic transaminase; GOT, glutamic oxaloacetic transaminase; LDH, lactate dehydrogenase; ALP, alkaline phosphatase; γ-GTP, gamma glutamyl transpeptidase; CHE, cholinesterase; BUN, blood urea nitrogen; Cre, creatinine; FPG, fasting plasma glucose; TG, triglyceride; TC, total cholesterol; PT, prothrombin time; APTT, activated partial thromboplastin time; CRP, C-reactive protein; CEA, carcinoembryonic antigen; AFP, Alpha-fetoprotein; CA19-9, carbohydrate antigen 19-9; CYFRA21_1, Cytokeratin 19 fragment. "↑, ↓" represent respectively an increase or decrease in examination index compared to the normal range.

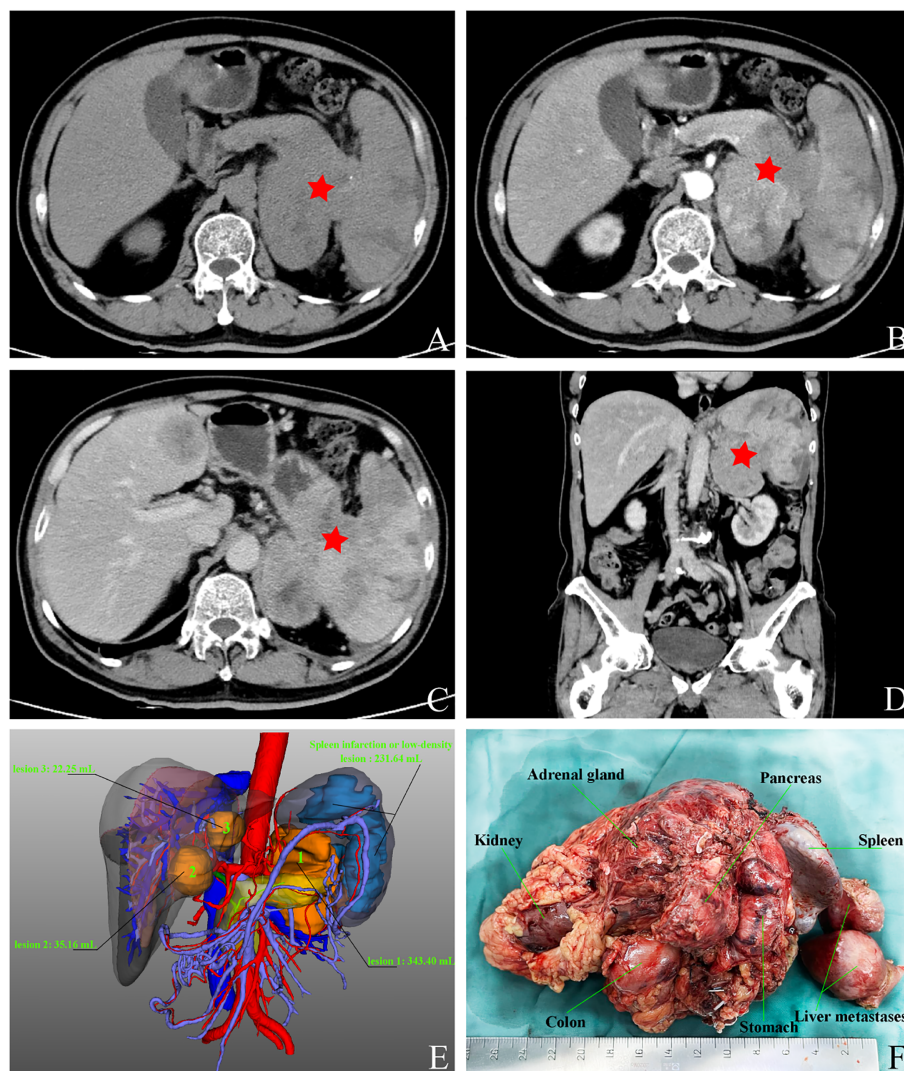


FIGURE 1

Images of abdominal computed tomography and 3D visualization reconstruction, macroscopic specimen after multivisceral resection. (A) plain scan; (B) arterial phase; (C) venous phase; (D) coronary scan; (E) visualization reconstruction; (F) postoperative specimen.

the gastric fundus (Figure 2F). Moreover, detection of 168 oncogenes and programmed cell death ligand 1 (PD-L1) protein expression was performed on puncture tissue specimens by Beijing ACCB Biotech Ltd to regulate the use of molecularly targeted drugs, immune checkpoint inhibitors, and chemotherapy drugs and to create precise and effective treatment plans for patients. Detection of 168 oncogenes revealed the inactivation of the *TSC2* gene (c.1793A > G, p.Y598C, mutation abundance=68.69%) and the activation of the *FGFR3* gene (gene amplification, mutation abundance=6.35 Copies) (Table 2). Chemotherapy sensitivity testing suggested in the paper that capecitabine had good patient efficacy while etoposide and fluorouracil had good safety. For *TSC2* gene mutations, this paper further recommended the use of the FDA-approved tumor-targeting drugs everolimus and temsirolimus, as well as ponatinib for *FGFR3*, while the other three mutant genes had not yet received approved drugs. Besides, the detection of anti-vascular targets for *FGFR3* suggested that enrotinib, lenvatinib, and pazopanib had further benefits. Detection of the PD-L1 protein expression showed that the

tumor proportion score (TPS) was 20% and the combined positive score (CPS) was 23 (Figure 3). This implied that PD-L1 immunohistochemistry test was positive, and immune checkpoint inhibitor drugs may be highly beneficial for patients.

Based on the above examinations, we diagnosed the tumor as a G3 nonfunctional neuroendocrine tumor with multiple organ invasions and metastases, most of which originated in the digestive system. Although the tumor was huge, invading the stomach, spleen, and left adrenal gland, and accompanied by two metastatic lesions on the liver, it did not invade important celiac arteries (celiac trunk artery, superior mesenteric artery, common hepatic artery) and veins (superior mesenteric vein, portal vein) from the CT and 3D visualization reconstruction image. Therefore, either R0 or R1 tumor resection or effective tumor reduction surgery can alleviate the clinical symptoms of patients and may improve their long-term prognosis. The operation was performed by an experienced hepatobiliary surgeon. During the operation, exploration found that, besides the preoperative imaging findings, the tumor also invaded the local colon. At the same time,

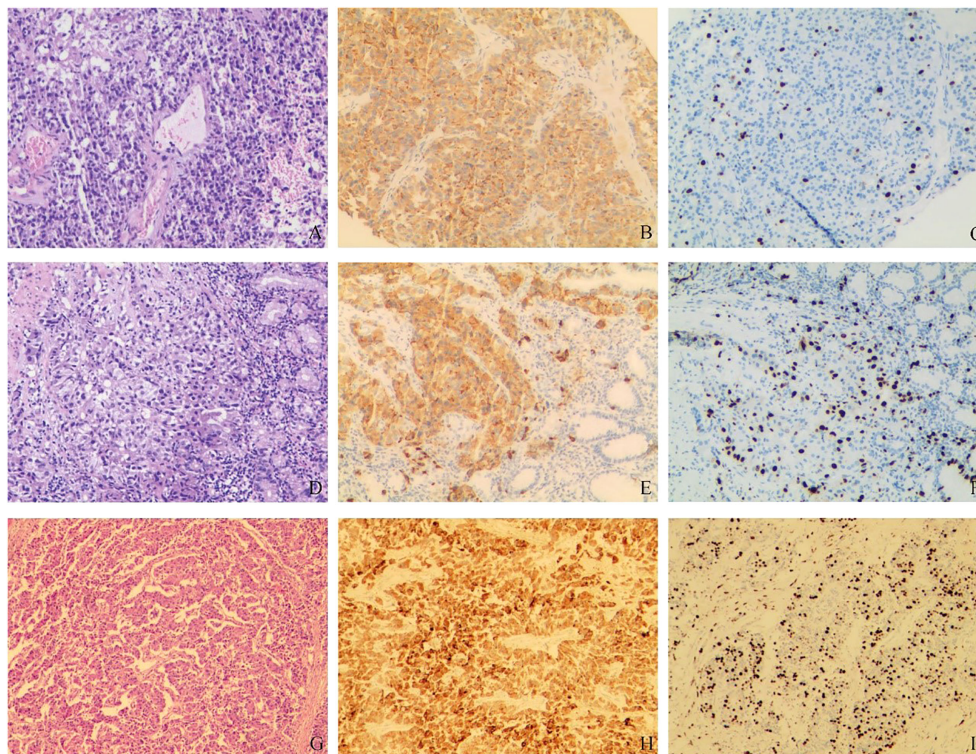


FIGURE 2 Pathological findings. (A–C) HE and immunohistochemical staining of tumor puncture tissue in the left adrenal region: (A) HE staining suggested tumor cell showed a nest-like distribution, neoplastic cells with polygonal shape, abundant and acidophilic cytoplasm, mild nuclear atypia without necrosis, rare nucleoli; (B) CgA (+); (C) Ki-67 (10%). (D–F) HE and immunohistochemical staining of gastric fundus tumor tissue: (D) HE staining showed the microscopic characteristics of tumor cells were similar to A; (E) CgA (+); (F) Ki-67 (20%). (G–I) HE and immunohistochemical staining of postoperative tumor tissue: (G) HE staining suggested tumor cell showed nest-like and cord-like distributions, neoplastic cells with polygonal shape, abundant and acidophilic cytoplasm, mild-to-moderate nuclear atypia with massive necrosis, obvious nucleoli; (H) CgA (+); (I) Ki-67 (40%).

because the tumor was located behind the adrenal gland and renal artery and vein, which were difficult to expose, the left kidney was removed. Finally, the patient received retroperitoneal tumor resection, partial gastrectomy, pancreatectomy, splenectomy, left nephrectomy, partial colon resection, and enucleation of liver metastases (Figure 1F). The pathological diagnosis of surgical specimens was as follows: HE

staining suggested tumor cell showed nest-like and cord-like distributions, neoplastic cells with polygonal shape, abundant and acidophilic cytoplasm, mild-to-moderate nuclear atypia with massive necrosis, obvious nucleoli (Figure 2G). No tumor involvement was found at the cutting edges of stomach, colon, pancreas, ureter, liver, and no lymph node metastases were found around the tumor (0/10) under

TABLE 2 Detection of 168 oncogenes from Beijing ACCB Biotech Ltd.

	Gene	Exon/Base/Amino Acid	Mutation abundance	Sensitive related drugs	Tolerance related drugs	Clinical trials
Tumor targeting/ drug resistance related gene mutations	TSC2	exon17 c.1793A>G p.Y598C	68.69%	none	none	Everolimus (NCT01470209, NCT02352844) Temsirrolimus (NCT01596140, NCT02215720)
	FGFR3	gene amplification	6.35 Copies	none	none	Ponatinib (NCT02272998)
Gene mutations without targeted therapy	FGF4	exon2 c.437A>T p.Y146F	57.26%	none	none	none
	FH	exon9 c.1273G>A p.D425N	78.66%	none	none	none
	NBN	exon12 c.1912T>C p.S638p	71.04%	none	none	none

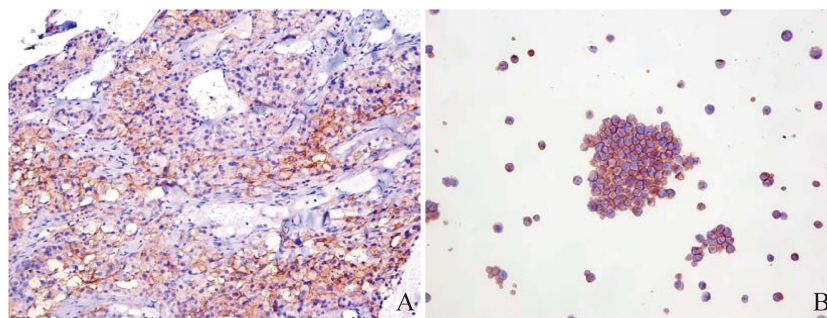


FIGURE 3
Immunohistochemistry of PD-L1 protein in puncture pathological tissues from Beijing ACCB Biotech Ltd. **(A)** microscopic image of puncture pathological tissue: TPS=20%, CPS=23; **(B)** positive control: TPS \geq 1%.

the microscope. Immunohistochemistry staining showed that the tumor cells were positive for CgA (Figure 2H), Syn, CK18 and negative for P53, Melan-A, inhibin, S-100, Heppar-1, vimentin, TTF1, CT, Pax-8, CDX2. The Ki-67 index was 40% in the specimen (Figure 2I). So far, the final diagnosis of this case has been G3 nonfunctional NET, most of which originated in the pancreas, TNM stage: T₄N₀M_{1a} (3). The patient has been receiving chemotherapy since May 28, 2022, without recurrence to date. He was treated with 750 mg/m² of capecitabine twice daily from day 1 to 14 and 200 mg/m² of temozolomide once daily from day 10 to 14, repeating such a procedure twice in a cycle of 28 days. A dose reduction or schedule adjustment was performed in consideration of the individual patient's general condition and toxicity at the discretion of the clinician. Response to treatment was assessed every three months through CT and/or MRI images according to the Chinese guidelines for the diagnosis and treatment of pancreatic neuroendocrine neoplasms (2020) (12), and the patient has been followed up to date without recurrence.

Discussion

pNENs usually display characteristic organoid growth patterns with typical neuroendocrine morphology. Patients may not have unique symptoms brought on by the tumor mass impact at different stages of the disease. Most of them incidentally discover tumors when getting their health checked. Some individuals may live for many years even with liver metastases, but others may experience a more precipitous clinical course with widespread metastasis and dismal survival. The WHO Classification of Tumors of the Digestive System, 5th edition, modified the classification of neuroendocrine tumors in light of advances in tumor molecular pathology. The new classification eliminates confusion between well-differentiated G3 pNETs and poorly-differentiated pNECs, which are thought to be two separate entities with unique clinical, morphological, and molecular characteristics (13). Patients with G3 pNETs had a significantly longer median overall survival (41–99 vs. 17 months) compared with patients with pNECs (14, 15). Meanwhile, the median overall survival of G3 pNETs after surgery without metastasis (39.2 months), with metastasis (19.5 months) was significantly longer than that of pNECs (respectively

16 months and 9.1 months). Contrarily, overall survival did not significantly differ between surgical and non-surgical procedures among patients with pNECs (16). Therefore, different from the dismal survival prognosis and poor treatment of pNECs (17), the disease treatment and management of G3 pNETs should adopt a more upbeat outlook and more radical surgical intervention.

Accurately classifying G3 pNETs and pNECs has become difficult for surgeons due to variations in clinical presentations and treatment approaches. Although some blood biomarkers, such as CgA, NSE, et al., have specificity for pNETs and pNECs, their sensitivity is constrained and may be influenced by tumor type, tumor burden, and secretion level (18). In addition to conventional CT and MRI, somatostatin receptor imaging, which has a sensitivity of 91% and a specificity of 94% (19), is thought to be the most accurate tool for identifying pNENs and their metastases. ⁶⁸Ga-DOTA-SSA PET/CT is also important for determining radionuclide uptake, which is associated with the response to peptide receptor radionuclide therapy (PRRT) (20). Research has found that ⁶⁸Ga-DOTA-SSA PET/CT can effectively discriminate between low-grade and high-grade pNENs but cannot further differentiate G3 pNETs and pNECs (21). Due to outstanding diagnostic sensitivity of the ¹⁸F-FDG PET/CT for G3 pNET and pNEC, it is frequently employed in clinical practice in conjunction with ⁶⁸Ga-DOTA-SSA PET/CT to increase disease diagnostic sensitivity and precise staging (22, 23). These examinations are not commonly accessible, just due to a lack of PET-CT equipment or inadequate testing levels in medical facilities, as well as the expensive examination charges. This has also led to significant regrets and deficiencies in our preoperative examination of this case. Endoscopic ultrasound (EUS) is the gold standard for the diagnosis of pNEN. EUS-guided fine needle aspiration (FNA) for cytology and histology can distinguish G3 pNETs and pNECs, enabling decisions on an appropriate treatment strategy (24). However, when the differential diagnosis of G3 pNETs and pNECs in morphology and immunohistochemistry is difficult, personalized gene detection techniques can describe genetic molecular characteristics and mutated genes, providing a reference for precise treatment of patients while making a differential diagnosis (25, 26). We conducted genetic testing on puncture specimens and revealed genetic mutations. Based on the latest guidelines and research status, we screened drugs that can benefit patients.

The surgical value of borderline resectable or locally advanced G3 pNETs and pNECs is hotly debated. The guidelines of European Neuroendocrine Tumor Society (ENETS) recommend extended multivisceral pancreatic resection with or without combined vascular reconstruction for patients with G1 pNETs and G2 pNETs without distant metastatic disease, but is prohibited for higher-grade G3 pNETs and pNECs (4). National Comprehensive Cancer Network guidelines (27) provide a more detailed overview of G3 pNETs and pNECs based on the biological characteristics (e.g., Ki-67 index, PET imaging) and clinical symptoms of tumors (e.g., tumor burden and complications). Locally advanced or metastatic G3 pNETs with favorable biology can still remove primary and metastatic sites, but pNECs tend to prefer systemic, comprehensive treatment. The Chinese Guidelines for the Diagnosis and Treatment of Pancreatic Neuroendocrine Neoplasms (2020) think that for G3 pNETs and pNECs patients who are not expected to achieve R0 and R1 resection, effective tumor reduction surgery can alleviate the patient's clinical symptoms and may improve their long-term prognosis. Simple primary lesion resection may also prolong the postoperative survival time of patients with metastatic sites (12). In this case, the patient's preoperative examination revealed a G3 pNET with type II liver metastases and no evidence of tumor invasion into significant abdominal arteries and veins. Chinese guidelines support concurrent or phased surgical therapy for patients with type II liver metastases when the expected total tumor reduction is higher than 70% (often greater than 90%, including both the metastatic and original lesions). Removing the main lesion while reducing the tumor load on the metastatic lesion as much as feasible is the best method to gain advantage. We thoroughly evaluated the possibility of simultaneous excision of the main and metastatic lesions based on the findings of several preoperative exams. Additionally, the patient has gradually acquired tumor compression symptoms, including decreased appetite and post-eating abdominal distension. The patient's quality of life would be poor and their estimated survival time would be short if surgery is not performed. Finally, we chose surgical treatment, and the postoperative pathological results showed that the surgery achieved R0 resection. At the same time, considering the tumor invading multiple organs with type II liver metastasis, postoperative adjuvant therapy was a more reliable treatment option. Based on the results of genetic testing and Chinese guidelines, we attempted the CAPTEM (capecitabine and temozolomide) chemotherapy. It is heartening that the surgical outcomes and the patient's benefits match our expectations. The last issue that needs our attention is whether neoadjuvant treatment or transformation therapy may improve R0 resect pNETs with high tumor burden and high-risk recurrence and metastatic factors, benefiting patients' survival rates. This may be a very fortunate case where our radical surgical perspective has not been validated through large-scale randomized controlled trials.

Conclusion

We reported a G3 pNET with a high degree of biological malignancy, involving invasion of five adjacent organs, including the stomach, spleen, colon, adrenal gland, and kidney, as well as liver metastases. The surgeon should be inspired by this case report

to distinguish between G3 pNETs and pNECs as well as to gain a fresh perspective on surgical indications. Through more proactive surgical procedures, providing survival benefits to patients with well-differentiated pNETs.

Data availability statement

The original contributions presented in the study are included in the article/supplementary material. Further inquiries can be directed to the corresponding authors.

Ethics statement

Written informed consent was obtained from the patient/participant for the publication of this Case Report.

Author contributions

CZ, WN, YX contributed equally to the conception and design of the study and wrote the manuscript as co-first authors. YL, LH and SL cared for the patient. JW and XJ performed the surgical resection and reviewed the manuscript. All authors contributed to the article and approved the submitted version.

Funding

Suzhou Clinical Medical Center Construction Project (Szlcyxzxj202107); Research Project of Gusu College, Nanjing Medical University (GSKY20210204).

Acknowledgments

The authors thank the patient and all the clinical staff who participated in the treatment of the patient. We sincerely thank Director Feng Wang's assistance in interpreting pathology from the Suzhou Municipal Hospital's Pathology Department.

Conflict of interest

The authors declare that the research was conducted in the absence of any commercial or financial relationships that could be construed as a potential conflict of interest.

Publisher's note

All claims expressed in this article are solely those of the authors and do not necessarily represent those of their affiliated organizations, or those of the publisher, the editors and the reviewers. Any product that may be evaluated in this article, or claim that may be made by its manufacturer, is not guaranteed or endorsed by the publisher.

References

- Takayanagi D, Cho H, Machida E, Kawamura A, Takashima A, Wada S, et al. Update on epidemiology, diagnosis, and biomarkers in gastroenteropancreatic neuroendocrine neoplasms. *Cancers (Basel)* (2022) 14(5):1119. doi: 10.3390/cancers14051119
- Nagtegaal ID, Odze RD, Klimstra D, Paradis V, Rugge M, Schirmacher P, et al. The 2019 WHO classification of tumors of the digestive system. *Histopathology* (2020) 76(2):182–8. doi: 10.1111/his.13975
- Amin MB, Greene FL, Edge SB, Compton CC, Gershenwald JE, Brookland RK, et al. The eighth edition AJCC cancer staging manual: Continuing to build a bridge from a population-based to a more "personalized" approach to cancer staging. *CA Cancer J Clin* (2017) 67(2):93–9. doi: 10.3322/caac.21388
- Partelli S, Bartsch DK, Capdevila J, Chen J, Knigge U, Niederle B, et al. ENETS consensus guidelines for standard of care in neuroendocrine tumors: Surgery for small intestinal and pancreatic neuroendocrine tumors. *Neuroendocrinology* (2017) 105(3):255–65. doi: 10.1159/000464292
- Sulciner ML, Clancy TE. Surgical management of pancreatic neuroendocrine tumors. *Cancers (Basel)* (2023) 15(7):2006. doi: 10.3390/cancers15072006
- Williams JK, Schwarz JL, Keutgen XM. Surgery for metastatic pancreatic neuroendocrine tumors: A narrative review. *Hepatobiliary Surg Nutr* (2023) 12(1):69–83. doi: 10.21037/hbsn-22-238
- Abdalla TSA, Klinkhammer-Schalke M, Zeissig SR, Tol KK, Honselmann KC, Braun R, et al. Prognostic factors after resection of locally advanced non-functional pancreatic neuroendocrine neoplasm: An analysis from the German cancer registry group of the society of German tumor centers. *J Cancer Res Clin Oncol* (2023) 149(11):8535–43. doi: 10.1007/s00432-023-04785-0
- Holmager P, Langer SW, Kjaer A, Ringholm L, Garbyal RS, Pommergaard HC, et al. Surgery in patients with gastro-entero-pancreatic neuroendocrine carcinomas, neuroendocrine tumors G3 and high grade mixed neuroendocrine-non-neuroendocrine neoplasms. *Curr Treat Options Oncol* (2022) 23(6):806–17. doi: 10.1007/s11864-022-00969-x
- Kaslow SR, Vitiello GA, Prendergast K, Hani L, Cohen SM, Wolfgang C, et al. Surgical treatment of patients with poorly differentiated pancreatic neuroendocrine carcinoma: An NCCDB analysis. *Ann Surg Oncol* (2022) 29(6):3522–31. doi: 10.1245/s10434-022-11477-5
- Merola E, Rinke A, Partelli S, Gress TM, Andreasi V, Kollár A, et al. Surgery with radical intent: Is there an indication for G3 neuroendocrine neoplasms? *Ann Surg Oncol* (2020) 27(5):1348–55. doi: 10.1245/s10434-019-08049-5
- Wu Z, Wang W, Zhang K, Fan M, Lin R. The impact of surgery and survival prediction in patients with gastroenteropancreatic neuroendocrine tumors: A population-based cohort study. *Int J Surg* (2023) 109(6):1629–38. doi: 10.1097/JS9.0000000000000336
- Wu WM, Chen J, Bai CM, Chi Y, Du YQ, Feng ST, et al. The Chinese guidelines for the diagnosis and treatment of pancreatic neuroendocrine neoplasms (2020). *Zhonghua Wai Ke Za Zhi* (2021) 59(6):401–21. doi: 10.3760/cma.j.cn112139-20210319-00135
- Assarzadegan N, Montgomery E. What is new in the 2019 World Health Organization (WHO) classification of tumors of the digestive system: Review of selected updates on neuroendocrine neoplasms, appendiceal tumors, and molecular testing. *Arch Pathol Lab Med* (2021) 145(6):664–77. doi: 10.5858/arpa.2019-0665-RA
- Heetfeld M, Chougnnet CN, Olsen IH, Rinke A, Borbath I, Crespo G, et al. Characteristics and treatment of patients with G3 gastroenteropancreatic neuroendocrine neoplasms. *Endocr Relat Cancer* (2015) 22(4):657–64. doi: 10.1530/ERC-15-0119
- Vélayoudom-Céphise FL, Duvillard P, Foucan L, Hadoux J, Chougnnet CN, Leboulleux S, et al. Are G3 ENETS neuroendocrine neoplasms heterogeneous? *Endocr Relat Cancer* (2013) 20(5):649–57. doi: 10.1530/ERC-13-0027
- Yoshida T, Hijioka S, Hosoda W, Ueno M, Furukawa M, Kobayashi N, et al. Surgery for pancreatic neuroendocrine tumor G3 and carcinoma G3 should be considered separately. *Ann Surg Oncol* (2019) 26(5):1385–93. doi: 10.1245/s10434-019-07252-8
- Dasari A, Mehta K, Byers LA, Sorbye H, Yao JC. Comparative study of lung and extrapulmonary poorly differentiated neuroendocrine carcinomas: A SEER database analysis of 162,983 cases. *Cancer* (2018) 124(4):807–15. doi: 10.1002/cncr.31124
- Oberg K, Modlin IM, De Herder W, Pavel M, Klimstra D, Frilling A, et al. Consensus on biomarkers for neuroendocrine tumor disease. *Lancet Oncol* (2015) 16(9):e435–46. doi: 10.1016/S1470-2045(15)00186-2
- Singh S, Poon R, Wong R, Metser U. 68Ga PET imaging in patients with neuroendocrine tumors: A systematic review and meta-analysis. *Clin Nucl Med* (2018) 43(11):802–10. doi: 10.1097/RLU.0000000000002276
- Lee ONY, Tan KV, Tripathi V, Yuan H, Chan WW, Chiu KWH. The role of 68Ga-DOTA-SSA PET/CT in the management and prediction of peptide receptor radionuclide therapy response for patients with neuroendocrine tumors: A systematic review and meta-analysis. *Clin Nucl Med* (2022) 47(9):781–93. doi: 10.1097/RLU.0000000000004235
- Zhou J, Zhao R, Pan Y, Ju H, Huang X, Jiang Y, et al. The diagnostic and grading accuracy of ⁶⁸Ga-DOTATATE and ¹⁸F-FDG PET/MR for pancreatic neuroendocrine neoplasms. *Front Oncol* (2022) 12:796391. doi: 10.3389/fonc.2022.796391
- Binderup T, Knigge U, Loft A, Mortensen J, Pfeifer A, Federspiel B, et al. Functional imaging of neuroendocrine tumors: a head-to-head comparison of somatostatin receptor scintigraphy, ¹²³I-MIBG scintigraphy, and ¹⁸F-FDG PET. *J Nucl Med* (2010) 51(5):704–12. doi: 10.2967/jnumed.109.069765
- China Anti-Cancer Association Committee of Neuroendocrine. China Anti-Cancer Association guideline for the diagnosis and treatment of neuroendocrine neoplasms (abridged version). *Chin J Clin Oncol* (2023) 50(08):385–97. doi: 10.12354/j.issn.1000-8179.2023.20221522
- Yoshinaga S, Itoi T, Yamao K, Yasuda I, Irisawa A, Imaoka H, et al. Safety and efficacy of endoscopic ultrasound-guided fine needle aspiration for pancreatic masses: A prospective multicenter study. *Dig Endosc* (2020) 32(1):114–26. doi: 10.1111/den.13457
- Sorbye H, Grande E, Pavel M, Tesselar M, Fazio N, Reed NS, et al. European neuroendocrine tumor society (ENETS) 2023 guidance paper for digestive neuroendocrine carcinoma. *J Neuroendocrinol* (2023) 35(3):e13249. doi: 10.1111/jne.13249
- Umetsu SE, Kakar S, Basturk O, Kim GE, Chatterjee D, Wen KW, et al. Integrated genomic and clinicopathologic approach distinguishes pancreatic grade 3 neuroendocrine tumor from neuroendocrine carcinoma and identifies a subset with molecular overlap. *Mod Pathol* (2023) 36(3):100065. doi: 10.1016/j.modpat.2022.100065
- Shah MH, Goldner WS, Benson AB, Bergsland E, Blaszkwosky LS, Brock P, et al. Neuroendocrine and adrenal tumors, version 2.2021, NCCN clinical practice guidelines in oncology. *J Natl Compr Canc Netw* (2021) 19(7):839–68. doi: 10.6004/jnccn.2021.0032