

Experimental Investigation of Snail Shell-based Cement Mortar: Mechanical Strength, Durability and Microstructure

Suseela Alla¹, Asadi Siva Sankar²

¹Department of Civil Engineering, Vignan's Foundation for Science, Technology and Research, Vadlamudi, Guntur 522213, A.P, India (alla.suseela@gmail.com) ORCID 0000-0002-3052-0651




²Department of Civil Engineering, Vignan's Foundation for Science, Technology and Research, Vadlamudi, Guntur 522213, A.P, India (bandlaprahlad@gmail.com) ORCID 0000-0001-8992-4899

Abstract

Snail shells are discarded bio-shell waste from restaurants, and oceans creating huge environmental problems for society. Living organisms are harmed when these shells are released. As previously stated, the work focuses primarily on the utilisation of snail shell powder as a raw ingredient in cement mortar. The mechanical and durability features of snail shell-based cement mortar were compared to the nominal mortar in this study. Snail shell powder ranging from 0% to 35 wt%, was used to partially substitute cement in mortar with a variation of 5%. X-Ray Diffraction was used to determine the chemical composition of both mixes. The mechanical properties of mortar for both mixes were determined using a compressive strength test. The durability tests on mortar viz., Water Absorption, Sorptivity, Acid Durability, and Rapid Chloride Permeability Test were compared with nominal mortar mix. According to the results of the investigation, the optimum use of snail shell powder is 30 wt%. The durability of both mixes increased by the increase of snail shell powder. To detect C-S-H gel formations, microstructural analysis was performed for both mixes.

Author Keywords. Cement, Snail Shell Powder, Durability Analysis, Water Absorption, XRD, SEM-EDS

Type: Research Article

 Open Access  Peer Reviewed  CC BY

1. Introduction

In present days the utilization of cement has been increasing in construction industry. It exhibits an exceptional performance in bonding and strength towards concrete structures. Although cement represents various benefits in concrete structures, but also have negative impacts on the environment (S. Chakraborty et al. 2013; S.L.Xu et al. 2011; C.S.R. Indukuri et al. 2019). Because the manufacturing of cement releases a tremendous quantity of energy. Regardless of energy, a significant amount of Carbon Dioxide (CO₂) is released into the environment. Therefore, the reduction in the cement utilization will reduce the CO₂ emission into the environment (Singh Nakshatra B 2018; Ram Mohan Reddy Bellum et al. 2020). The cement industry has been emitting roughly 0.83 kg of CO₂ per kg of cement, resulting in a global cement release of 12% by 2020 (Ram Mohan Reddy et al. 2020). Despite the fact that cement releases CO₂, it has a brittleness property that causes cracks in concrete constructions. Typically, brittleness of cement composite brought on during formation of

hydration products like Calcium Silicate Hydrate Gel (C-S-H Gel), Ettringite (AFt), and Calcium Hydroxide ($\text{Ca}(\text{OH})_2$) (C.S.R. Indukuri et al. 2019).

To overcome the excess amount of cement usage in construction, alternative waste materials and industrial by-products such as Red Mud, Fly Ash, Ground Granulated Blast Furnace Slag (GGBS), Snail Shells, Clamshells, and Glass can be used by replacing certain quantity of cement in concrete structures (Ram Mohan Reddy Bellum et al. 2020; M.Abdel-Raheem et al. 2017, Ch. Venkatesh et al. 2018; S.Samal et al. 2013; N.Devendran 2017). Thorough research was done on cement composites worldwide because cement is the principal constituent in the constructions. Snail shells are the one composite material that shows similar properties to cement. Snail shells can replace cement or aggregates in concrete or mortar composite (N.T. et al. 2012). Snail shells are the waste product from the restaurants and represents the spherical shape found in the coastal regions. According to the Food and Agriculture of the United Nations (FAO 2018), 16.1 million tons of snail shells are produced annually. Previously, the shells are used with aggregates in the construction works (Umoh 2013). To the best of my knowledge, using the shells like clams, snails, oysters in the partial or full replacement of cement in concrete production, which reduces the cement usage in concrete constructions. (Umoh 2013; F. Sahari 2011). Some other materials such as GGBS, red mud, silica fume were also utilized to replace cement in the world (Ram Mohan Reddy Bellum et al. 2020). In the same manner, agricultural wastes such as sawdust and rice husk ash were employed as admixtures in cement composites in another study (F.F.Udeoeyo 2004;D.C.Okpala 1987; E.B.Oyetola 2006).

The snail shells are dumped as waste material in empty lands due to less waste management. Snail shells possess a pozzolanic nature like cement. In the present work, snail shells were used to replace cement as a cementitious material partially. These are collected from nearby coastal areas belonging to the group of exoskeletons that have rigid and resistance and play a major role in the construction. Due to these shells contains calcium carbonate (CaCO_3), which represents the hardness property and shows plenty of potential benefits. It is a more effective and more economical way of getting rid of waste. Incorporating shells in the cement industry will preserve natural resources. The cement mortar obtained from the snail shell powder can be considered a sustainable composite by producing green composites than the conventional constructions (Elliott R.A. et al. 2013; Olivia et al. 2015). Not many investigations were done on snail shell-based cementitious material in mortar. An added advantage of these discarded shells with cement replacement was assumed. There are various opinions on the usage of snail shells in cement, and their uses were explained by various authors.

Orlando Ketebu et al., (2017) done the work on ashes of snail shells and clamshells are as a replacement of cement due to its pozzolanic properties with a percentage of 0 % to 30 wt % by weight of cement. The maximum compressive strength obtained at 20 wt % cement replacement with snail shell ash is 20 MPa, and the strength with clamshells is about 30 MPa at 25 wt% replacement of cement with clamshells. They described that the compressive strength decreased with an increase of snail and clam shells ash and the optimum percentages of 20 wt % and 25 wt % for snail and clamshells.

N. Devendran (2017) worked on Sea Shells are considered in the form of powder, and some of the shells are broken into pieces, used as replacement of coarse aggregates because of their toughness. The maximum compressive strength was obtained at 15 wt % replacement of Cement with Sea Shell powder, and 15 wt % of coarse aggregates are replaced with Sea Shell pieces and is 35.4 MPa compared with nominal concrete of 33.1 MPa.

Syed Talha Zaid et al., (2014) considered the snail shell is in the form of powder and added parts in cement with 0 % to 20 wt % to acquire the mechanical strength. The compressive strength is maximum at 5% replacement of snail shell powder with cement is 21.42 MPa for 7 days and 31.52 MPa for 28 days and starts to decrease with increasing powder.

Othman et al., (2013) adopted the cockle shells ash for replacement of cement with 0 %, 5 wt %, 10 wt %, 15 wt %, 25 wt %, and 50 wt % for a curing period of 7, 28, 90 days, and 120 days. The water to binder ratio is 0.54 adopted for all mixes. The mechanical strengths are maximum at 5 % replacement of and are about 40.28 MPa and decreased from then. Consecutively, the modulus of elasticity increases for 10 % of replacement but is less than 5 % and is 22.2 MPa. Table 1 shows some of the literature on the snail shells incorporated in the constructions.

Name of the Research Reference	Type of shell	Usage in cement composite	Result
Varhen et al., 2017	Peruvian scallop	Replacement of Fine Aggregate (F.A.)	A maximum of 40% replacement of Fine aggregates is suggested in a range of 1.19-4.75mm of crushed seashell, but 5% can be considered optimal for all conventional concrete.
Lalitha and Raju, 2014	Scallop shells and Coconut shells	Replacement of Coarse Aggregate (C.A.)	In view of economical, 10%(5%scallop+5%Coconut shells) is preferable in replacement of coarse aggregate. The compressive strength is increased at 10%(5%scallop+5%Coconut shells) and decreases thereafter.
Kumar et al., 2016	Shells of cockle	Replacement of Coarse Aggregate (C.A.)	The workability and strength of concrete is increased at 20% replacement of coarse aggregate with Cockle shells as compared to other replacement levels.
Syed Talha Zaid et al., 2014	Snail shells Ash	Partial Replacement of Cement	The optimum strength is observed at 5% replacement of cement with shell ash and the workability is decreases.
Orlando Ketebu et al., 2017	Snail and Clams shells Ash Admixtures	Replacement of Cement	The setting times of mortar is improved at replacement of cement with snail and clam shell ash. The strength was improved and obtained maximum at 25% replacement of combined snail and clam shells ash.

Table 1: Experimental Investigation on Snail shell Powder in Cement

As per the literature, there is necessary to estimate the extended life behaviour of snail shells in cement replacements. The present work was executed on distinctive mechanical, durability and microstructural properties to fill this research gap. In the present study, snail shell powder (SSP) is used by the replacement of cement for the formation of pozzolanic activity. In this, snail shell powder is replaced with cement partially with ranges of 0%, 5%, 10%, 15%, 20%, 25%, 30%, and 35% by weight of cement used.

2. Materials and Methods

2.1. Materials

Ordinary Portland cement of 53 grade is used in the present work from KCP Cements, Guntur, Andhra Pradesh, confirmed with ASTM C 150-19. The snail shell powder is confirmed with

ASTM C 618-08. The preliminary tests were done on the cement and snail shell powder of specific gravity, fineness, and specific surface area. The specific gravity for cement and snail shell powder was 3.16 and 2.41. Fineness for both the materials is 5%, and the specific surface area of cement and snail shell powder is 331 m²/kg, 19.000 m²/kg. The fine aggregates of size 2.36 mm are considered and confirmed with BIS, IS 383-2016.

2.2. Snail Shell Powder Preparation

Snail shell powder is used in the present work, which is extracted by grinding the snail shells which were considered. The following points represents the process of snail shell production.

- a) Firstly, snail shells are collected from Bapatla Coastal Area, Guntur, Andhra Pradesh, free from organic matter.
- b) Wash them with clean water until the constituents like flesh in the shells were free and keep them under sunlight until dry.
- c) Grind the shells into powder, sieve the powder in 90µm and keep the powder in an air-tight container.

XRD analysis is presented in Figure 1. The major constituent of snail shell powder is Aragonite (CaCO₃) with a high dominion of 2θ = 26o and 33o. Quartz (SiO₂) is the second principle constituent of snail shell, observed at various ranges of 2θ (46, 48, 53, and 58o). The significant peaks of cement observed in cement are Portlandite (180), Quartz (24, 28o), Alite (31, 33o), and Belite (35, 36o), other constituents observed at various ranges of 2θ presented in Figure 1. The chemical composition of cement and snail shell powder is shown in Table 2 and the calculation of pozzolanic materials includes SiO₂ + Al₂O₃ + Fe₂O₃ ≥ 40 wt.%.

Chemical Constituent	SiO ₂	Al ₂ O ₃	Fe ₂ O ₃	CaO	MgO	K ₂ O	Na ₂ O	SO ₃	TiO ₂	P ₂ O ₅	Mn ₂ O ₃	LOI
Cement	64.12	4.95	3.18	65.8 9	1.8	1.02	0.61	1.95	-	-	-	0.35
Snail shell powder	33.52	4.78	3.17	54.8 9	1.10	0.98	0.25	0.03	0.12	0.21	0.02	1.42

Note: LOI means Loss on Ignition

Table 2: Chemical composition of Cement Composite Materials

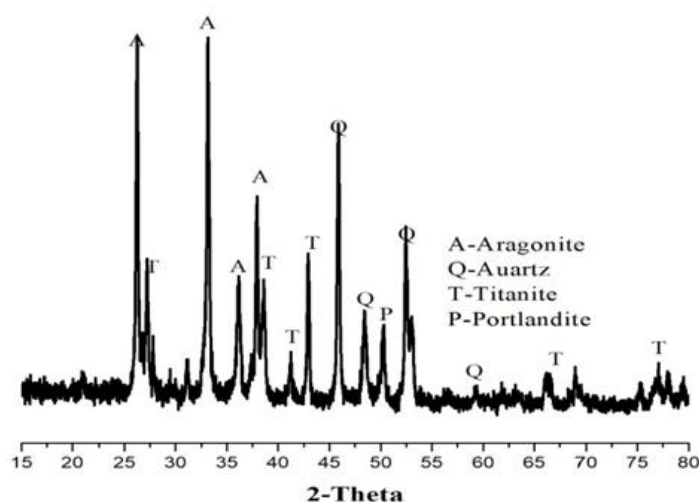


Figure. 1: XRD Analysis of Snail shell powder

2.3. Calculations of Mix

The mix proportion of cement composite mortar is 1:1.5:0.5, confirmed with I.S.: 2250-1981. Therefore, in that one portion Represents (OPC+SSP), three portions of Fine aggregates and

0.5 of Water/ Cement ratio is required. Table 3 represents the mix calculations needed in the present study.

Sample Mix	Cement	Snail Shell Powder (SSP)	Fine Aggregates	Water Required
C0S	300	-	450	150
C5S	285	15	450	150
C10S	270	30	450	150
C15S	255	45	450	150
C20S	240	60	450	150
C25S	225	75	450	150
C30S	210	90	450	150
C35S	195	105	450	150

Table 3: Required Mix Calculations

2.4. Specimens Casting and Curing

The test samples were cast in cast iron and wooden moulds. The sample moulds were applied with oil in all inner surfaces for easy removal of specimens after demoulding. The raw materials used for making cement composite are weighed with correct proportions. Mixing was done up to the level a uniform workable composite was achieved. The mixed cement composite was placed in the moulds in three layers of equal heights which were then vibrated at each filling to get a uniform mortar without any segregation. At least three sample specimen were casted to each composite mix proportion per each curing time period (7 and 28 days). After 24 hours the samples were demoulded and placed in the normal atmospheric condition (ambient curing). However, all the snail shell based cement composite samples are cured at ambient temperature for 7 and 28 days. Table 4 indicates the number of samples prepared to find the different properties of snail shell based cement composite.

S. No	Name of Test	Dimensions of specimen	Parameters of each test	Specimens for each mix proportion	Total
1.	Compressive Strength test	70.6 mm × 70.6 mm × 70.6 mm	7, and 28 Days	3+3	48
2.	Water absorption test	100mm Φ and 50mm thick	7, and 28 Days	3+3	48
3.	Sorptivity	100mm Φ and 50mm thick	28 Days	3	24
4.	RCPT	100mm Φ and 50mm thick	28 Days	3	24
5.	Acid attack (H ₂ SO ₄)	70.6 mm × 70.6 mm × 70.6 mm	28 Days	3	24
Total Samples					168

Table 4: Number and size of specimens for different test methods

2.5. Compressive Strength Test

The compressibility test is performed on the mortar specimens of size 70.6 mm*70.6 mm*70.6 mm, confirmed with I.S.: 516-2013. Then, the samples were casted and kept in the water bath

for 28 days for the hydration process as stated by I.S.: 9013-1978. Figure 2 shows the compressive strength test setup.



Figure 2: Compressive Strength Test

2.6. Water Absorption Test

A water absorption test was conducted on the specimens which were cured for 28 days in water. Then, taken out the samples and kept in the oven for 72 hrs at a temperature of 100°C, which is confirmed with I.S.:1199 (1959). Discard the samples from the oven after 72 hrs and weigh them. Note the oven-dry weight of samples and note it as W1. Later keep the specimens in a water bath for 24 hrs to know the wet weight and report it as W2. By using equation 1, water absorption has been calculated and is represented in "%".

$$W.A \text{ (Water Absorption) (\%)} = \frac{W_2 - W_1}{W_1} * 100 \quad (1)$$

Where, W1=Weight of Oven Dried Sample, W2=Wet Weight of Mortar Sample.

2.7. Sorptivity Test

A water penetration value is evaluated using Sorptivity in a prescribed time and confirmed with ASTM C 1585-20. The disc of 50 mm thickness and 100 mm of diameter is considered for the test. A non-absorbent coat like silica gel is applied on all disc surfaces except the surface exposed to the water surface. Figure 3 represents the setup of the Sorptivity test. First, the penetration of water from the exposure is determined concerning time. Then, the Sorptivity values are calculated by using equation 2.

$$S = \frac{i}{\sqrt{t}} \quad (2)$$

Where S=Sorptivity (mm/min^{0.5}), $i = \nabla W / (A * d)$, ∇W =Weight of samples concerning time, d=density of water, t=Elapsed time in minutes, and A=area of the disc.



Figure 3: Sorptivity test setup

2.8. Rapid Chloride Permeability Test

Rapid Chloride Permeability (RCP) Test was conducted to determine the electrical conductivity of the Cement + SSP composite mortar as per ASTM C1202-12. The discs are prepared with sizes of 50 mm height and 100mm diameter. The specimens are placed between the reservoirs of RCP Test cells filled with 3% of NaCl and 0.3M NaOH, and these were used as negative and positive terminals. Figure 4 represents the setup of RCP Test samples. The flow of electricity between the two reservoirs can determine by Coulombs of equation 3. Table 5 represents the penetration of chloride ions to the specimens in form of charge passed which is confirmed with ASTM C1202-12. $RCPT = 900 \cdot 10^{-3} \cdot ((I_0 + I_{360}) + 2(I_{60} + I_{90} + I_{120} + I_{150} + I_{180} + I_{210} + I_{240} + I_{270} + I_{300} + I_{330})) (3)$



Figure 4: Setup of RCP Test

Charge (Coulombs)	Chloride Permeability
>4000	High Permeable
2000-4000	Moderate
1000-2000	Low
100-1000	Very Low
<100	Negligible

Table 5. Correlated Values for RCPT (ASTM C1585-20 (2020))

2.9. Acid Durability Test

2.9.1. Mass Loss

The casted and water cured samples of size 70.6mm*70.6mm*70.6 mm are taken and kept in the oven for 72 hours at a temperature of 100°C to avoid moisture from specimens. Thereafter, taken out the samples from the oven and note the mass of samples as W_0 . Subsequently, prepare an acid solution of 5% concentrated H_2SO_4 with a pH of 0.3 which is maintained constant until the end of the test. Immersed samples in the acid solution for about 28 days. Finally, remove the samples from acid, keep them under the running water, and take mass as W_A . The percentage loss of mass gives the durability under acid solution and is calculated using equation 4.

$$A = \frac{W_0 - W_A}{W_0} * 100 \quad (4)$$

Where W_0 =Mass of oven samples, W_A =Mass of Acid Samples

2.9.2. Dimension Loss

Dimension loss is also a factor in the durability analysis. Edges of specimens are marked as L1, L2, L3, and L4 and measured diagonals lengths as L1 L4 and L2 L3. Dimensions of samples were determined before placing them in an acid bath. Remove all samples from the acid bath after 28 days, keep them under the running water, and measure the diagonals. The loss of dimensions gives durability. Figure 5 represents the setup of dimension measurements.



Figure 5: Dimensions Measurements

2.10. Microstructural Studies

Scanning Electronic Microscopy (SEM) analysis is conducted to analyze the morphological behaviour of mortar samples. The samples are collected from the mortar of 10mm*10mm*5mm, which are smooth surfaces. Energy-dispersive spectroscopy (EDS) analysis is also conducted on the same samples to know the compositions of elements constituted in the samples. Moreover, the X-Ray diffraction (XRD) analysis was performed on the powder sample of 90 μ m and analyzed in X'Pert High Score software.

3. Results and Discussions

3.1. Fluidity (Flow Table)

The fresh cement paste samples are mixed with 0 wt %, 5 wt %, 10 wt %, 15 wt %, 20 wt %, 25 wt %, 30 wt %, and 35 wt % dosages of Snail shell powder by the replacement of cement in the cement mortar. In the testing process fluidity of Snail shell based cement mortar was noticed at 5 min, 30 min, 60 min, 90 min and 120 min hydration time interval. Due to the incorporation of snail shell powder in cement mortar, the fluidity has been increased gradually from 5 wt % to 30 wt % and at 35 wt % started decreasing the fluidity due to the agglomeration of snail shell powder particles as represented in figure 6. But at all percentages of snail shell powder replacement, the fluidity is increased when compared to the normal cement composite.

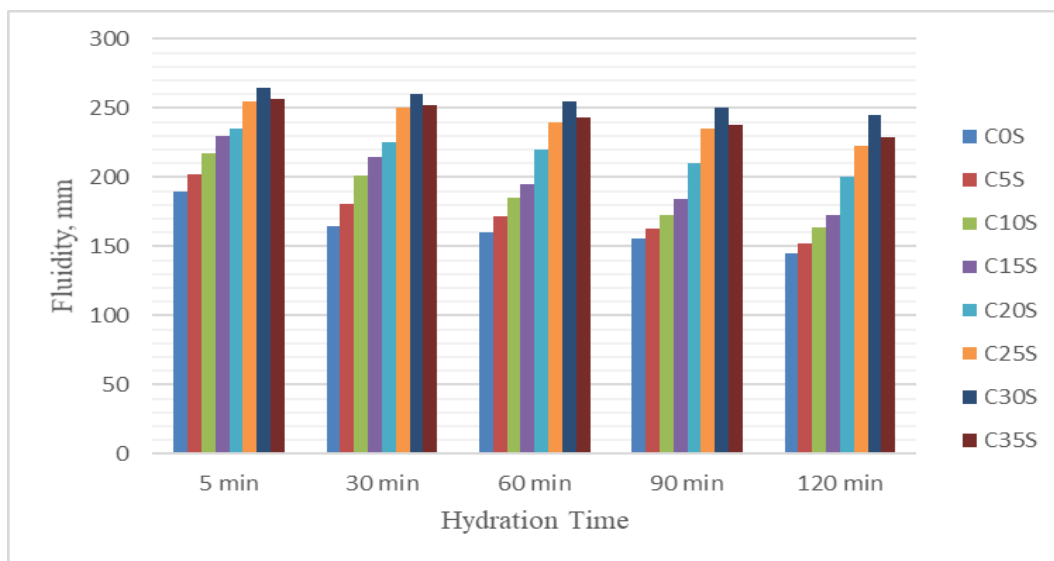


Figure 6: Fluidity (Flow Table) Results for Different Mixes

3.2. Compressive Strength

The mix proportion of materials are represented in table 3 with various proportions of snail shell powder in place of cement. From the compressive strength test, the maximum strength of 25.279 MPa and 38.89 MPa is obtained for C30S at 7 days and 28 days of curing and observes the decrement in strength from C35S (Orlando Ketebu et al. 2017) presented in Figure 7. It has been observed that the strength increased up to 72% of C30S for 7 days and 28 days compared to C0S. Due to the high specific surface area and fineness of snail shell powder, caused to improve the strength properties when mixed with cement composites. It results, the pores in cement mortar are refilled with snail shell powder particles and trapped the air. The microstructural analysis is also represents the finer particles in snail shell powder which can occupy the pores in cement mortar and results in less porosity. Moreover, the portlandite, silicates and aluminates in snail shell powder accelerate the hydration process and gain strength at an early age than nominal mixes. The formation of C-S-H gel in the hydration process increases the strength of snail shell-based cement mortar (Syed Talha Zaid 2014; Orlando Ketebu 2017). SEM images reveal the reason behind the increment of strength is the formation of Ettringite. The Ettringite helps to improve the hydration process and reduce shrinkage.

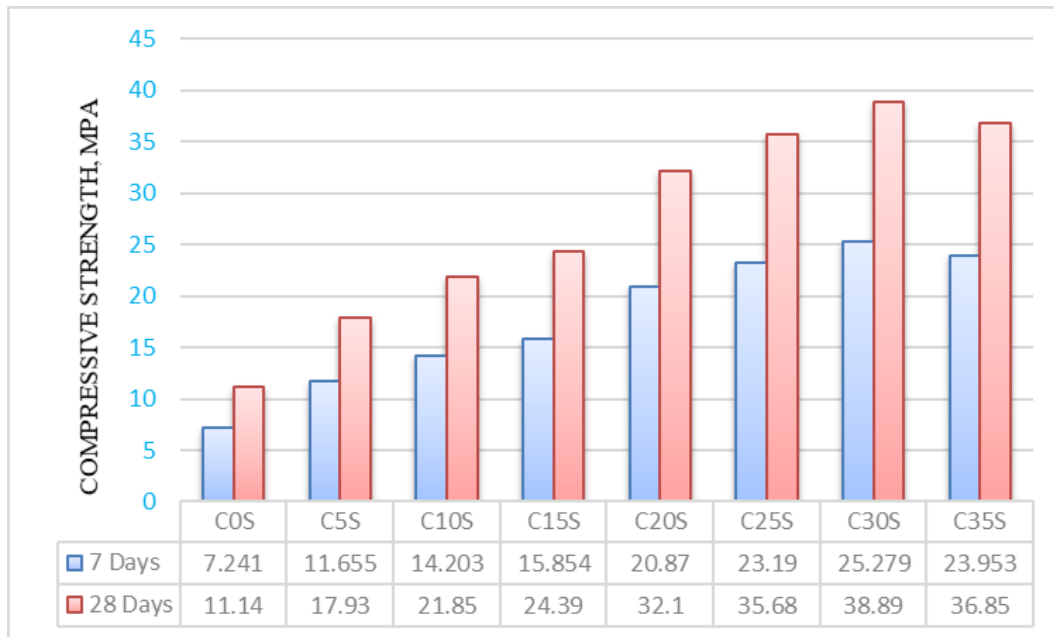


Figure 7: Compressive Strength for Different mixes

3.3. Water Absorption Test

The water absorption values of all the samples decrease with an increase of the snail shell powder is observed in Figure 8. The water absorption values of mix samples reduced from 8.29 - 3.53 and 5.12 - 2.5 for 7 & 28 days of curing and increased from C35S. The value of water absorption has reduced due to curing and the size of the shell powder (Sri rama Chand et al. 2018). The fineness and specific surface area of shell powder also play a significant role in water absorption because the finer particles settle on the pores and decrease the voids.

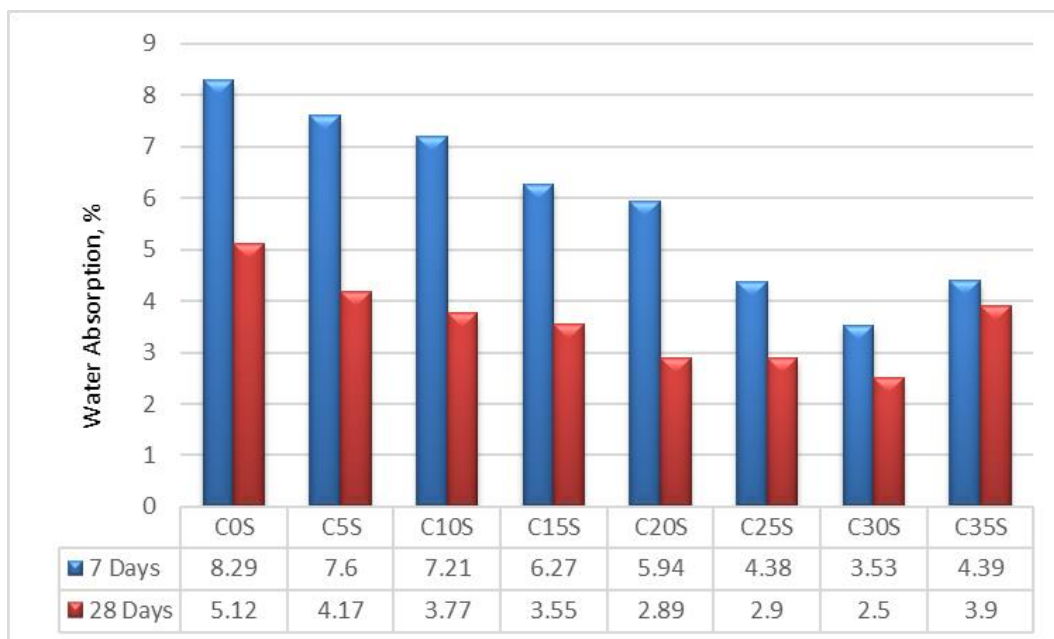


Figure 8: Water Absorption for different mixes

3.4. Sorptivity Test

Absorption of water through capillary suction determined for 28 days water cured samples and is presented in Figure 9. The absorption of water called Sorptivity is decreasing along with the increasing of snail shell powder. The Sorptivity values decrease from 0.58194 mm/min^{0.5} for C0S to 0.10912 mm/min^{0.5} for C30S and increase from then. The capillary action decreases

with increasing snail shell powder due to its higher specific surface area. Voids that are formed due to sand particles are filled with snail shell powder and forms dense structures (Syed Talha Zaid 2014; Orlando Ketebu 2017). The pozzolanic reaction developed in mortar is due to the filling nature of voids with snail shell powder. The Sorptivity values decrease with the increase of snail shell powder in mortar because voids, pores, and cracks are filled with powder.

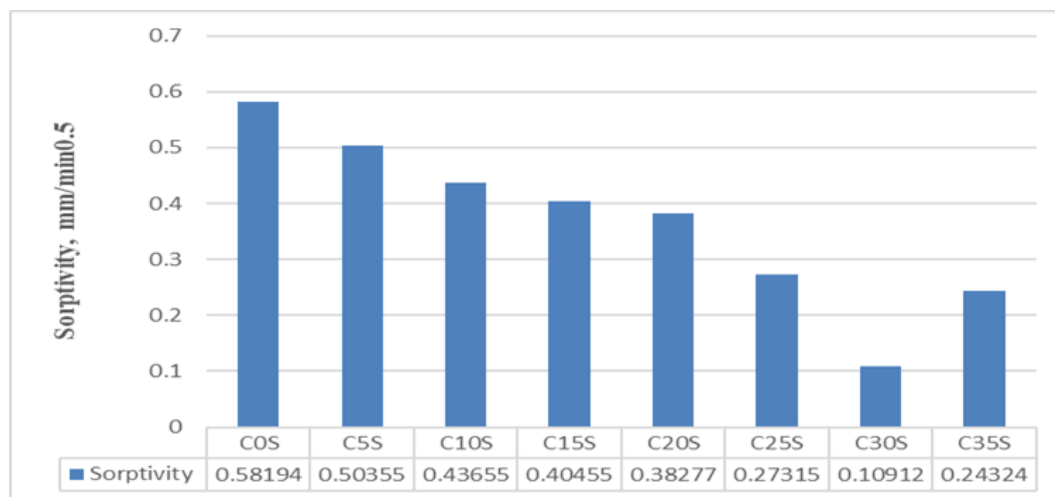


Figure 9: Sorptivity for Different mixes

3.5. Rapid Chloride Permeability Test

In the present work, the passage of chloride ions to the SSP cement composite has been investigated for samples of a curing period of 28 days. Figure 10 represents the passage of charge in the SSP cement composite at a respective time. The passage of coulombs has been reduced from 580 Coulombs of C0S SSP to 99 Coulombs for C30S SSP. The passage of current is decreased with an increase of snail shell powder in cement. It is because the pores in the composite are filled with fine snail shell powder. The decreasing of coulomb starts from 35% (C35S) replacement, decreasing the pozzolanic nature and less formation of C-S-H gels.

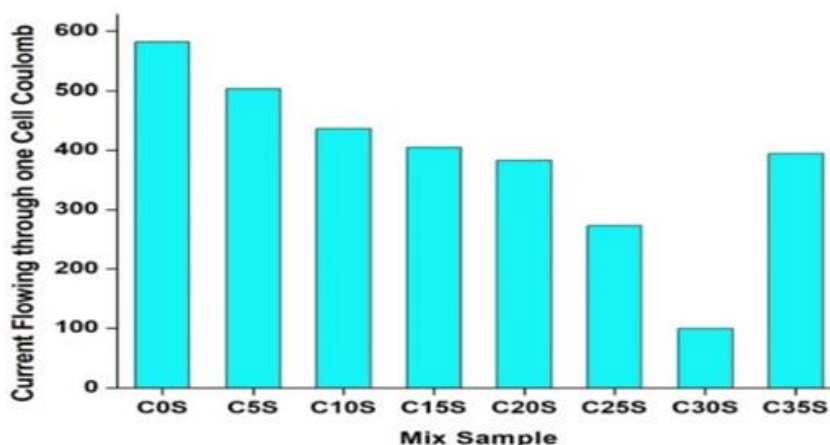


Figure 10: RCP Test values for mixes

The RCP Test values are correlated with the values which are presented in table 5. These values are confirmed with ASTM C1202-12. According to table 5, the lesser the permeability values lesser the charge passage (coulomb), and the higher the resistivity.

3.6. Acid Durability Analysis

3.6.1. Mass Loss and Dimension Loss

The mass and dimension loss due to the immersion of all specimens in 5 % of H₂SO₄ are presented in table 6. It is clearly evident that C30S has less loss of mass and dimension like 10 and 1.8 and increases from then. The loss is decreasing from C5S is due to the incorporation of snail shell powder in place of cement and forms a dense structure. This decrease of loss is continuous up to C30S and starts increasing from then. On the other hand, the loss is increasing from C35S due to increasing of snail shell powder and forms a loose structure.

Sample	C0S	C5S	C10S	C15S	C20S	C25S	C30S	C35S
Loss of Mass (%)	25.9	18.2	17.0	16.5	15.4	14.1	10.0	12.6
Loss of dimension (%)	15.3	12.4	11.8	7.6	5.9	4.7	1.8	4.1

Table 6: Mass loss and Dimension loss of Mix samples

3.7. Microstructural analysis

3.7.1. X-Ray Diffraction Analysis

X-Ray Diffraction Analysis (XRD analysis is performed on the mixes to identify the mineral phases. Quartz, Portlandite, and Ettringite were observed from the analysis. Ca (OH)₂ (Portlandite) has the property to uphold the solutions releases during the hydration process and improve the formation of C-S-H gel. Ettringite $[[Ca_3 Al (OH)_6]_2. (SO_4)_3.26H_2O]$ is the major complex structure that helps for the formation of C-S-H gel. The present study stated that a higher amount of Ettringite and Portlandite were observed for the C30S mix.

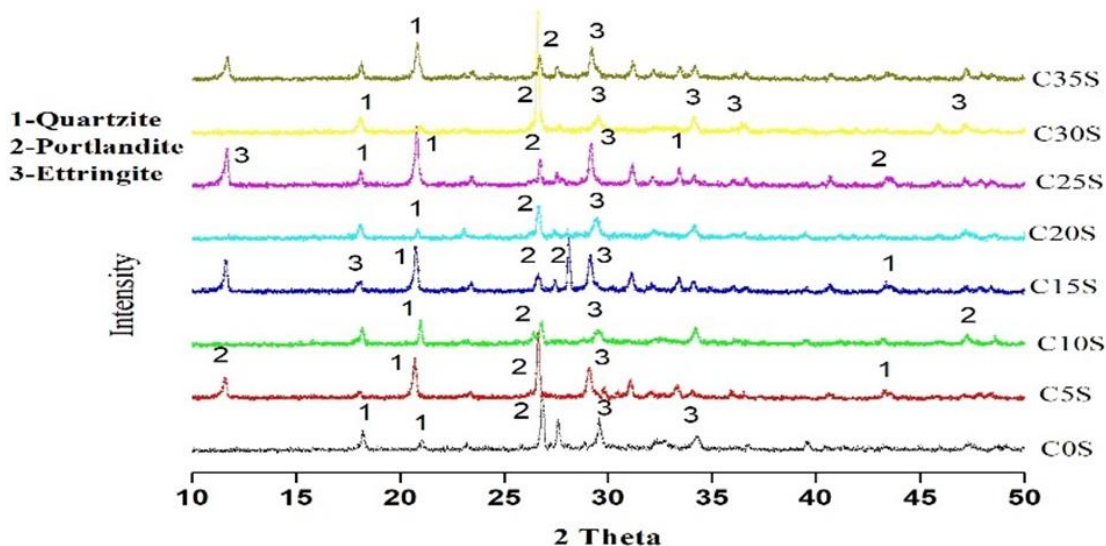
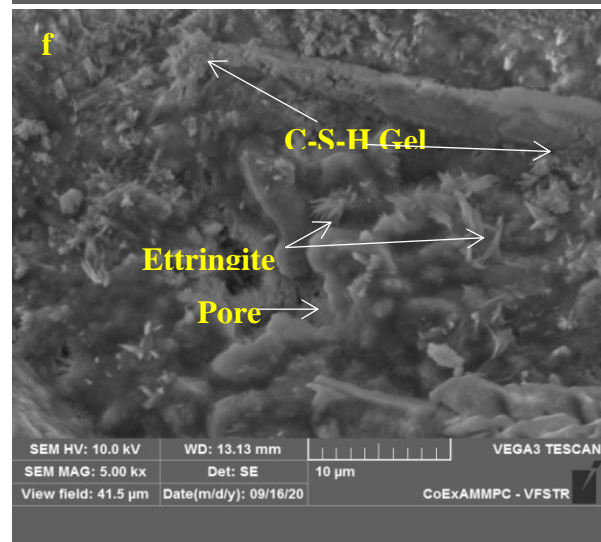
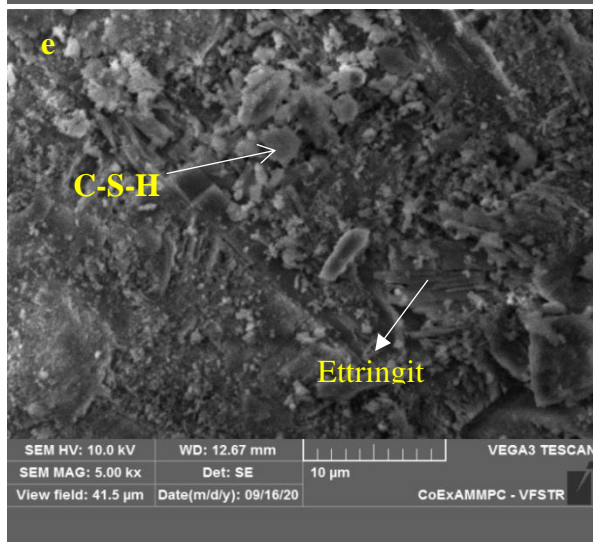
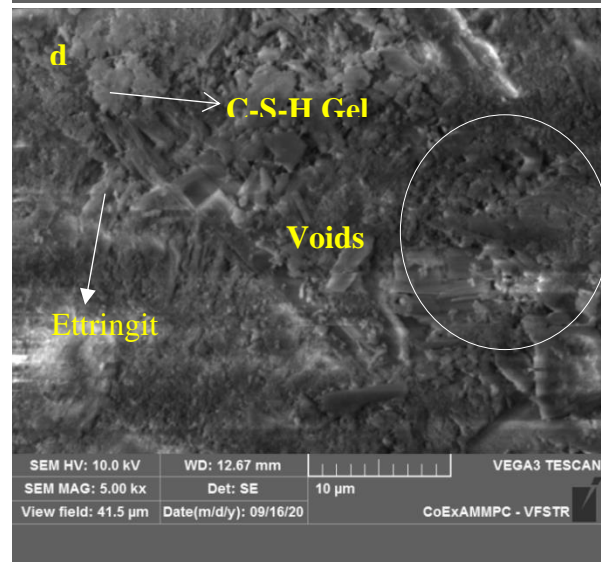
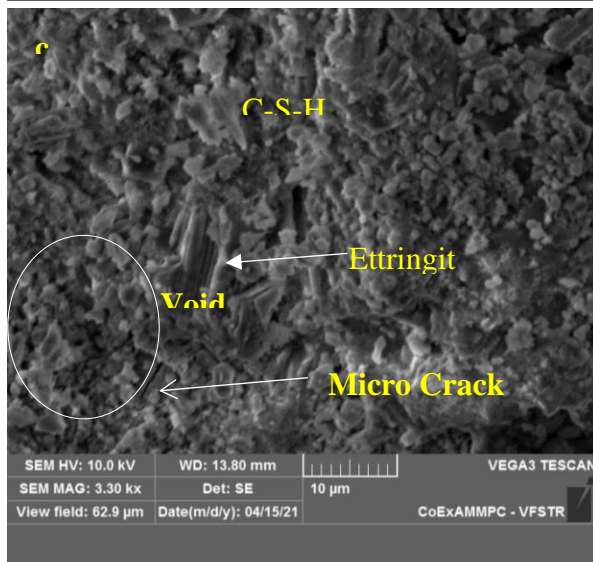
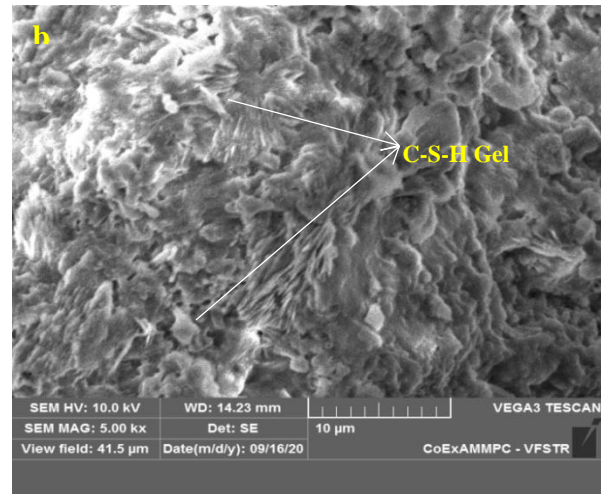
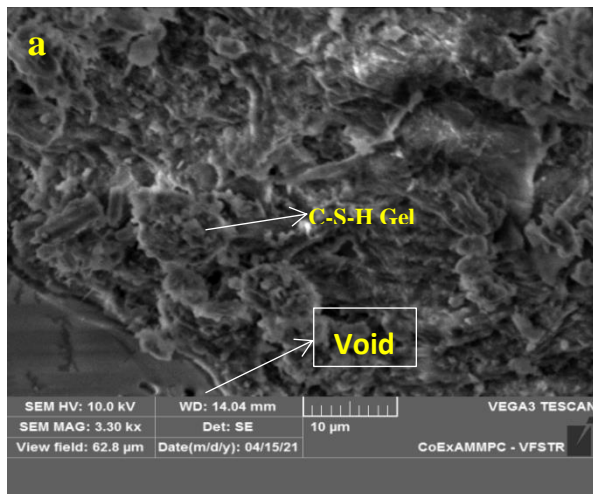


Figure 11: XRD Analysis of mixes

3.7.2. SEM & EDS Analysis

SEM analysis is performed on different mixes to know the morphological behaviour. EDS test is to understand the compositions of elements in the mixes. Figure 12a-h represents the SEM images of snail shell cement mortar. It was observed from the SEM Analysis and the formed structure is dense. It is because the finer particles in snail shell powder occupy the pores results in less porosity. This caused to improve the fresh and hardened state properties of snail shell based cement composite material. Figure 13a-h represents the energy dispersive spectroscopy of all the mixes. The Calcium/Silica (Ca/Si) ratio is achieved in between 0.8-2.5,

which is proving the formation of C-S-H gel in mixes. The results show that at 30%, cement replacement with snail shell (C30S) has a lesser Ca/Si ratio. It states that the lower the Ca/Si ratio, the higher the formation of C-S-H gel and vice versa.



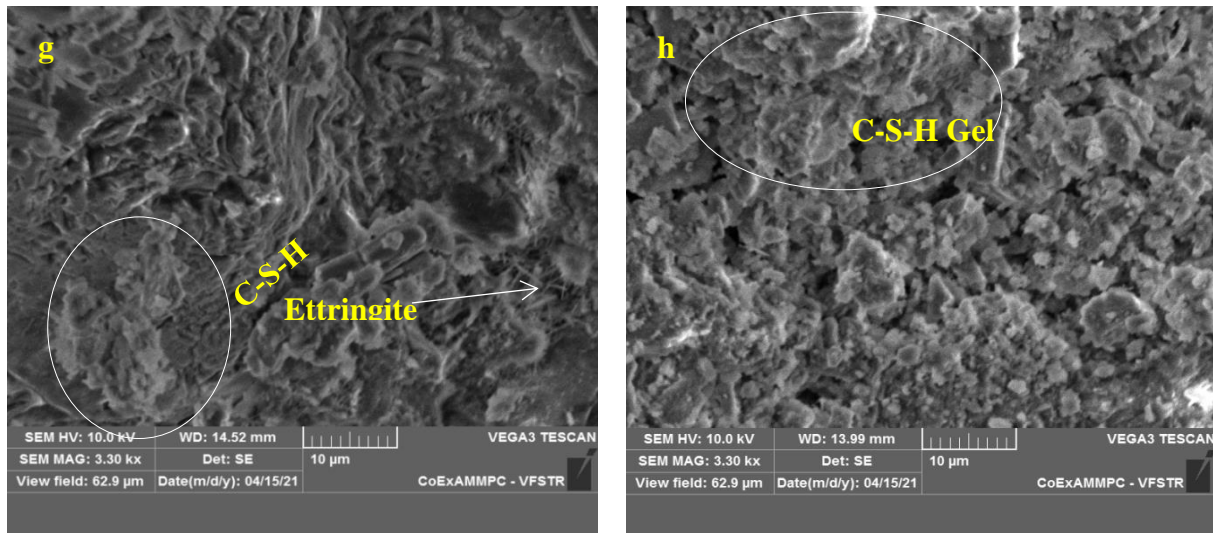
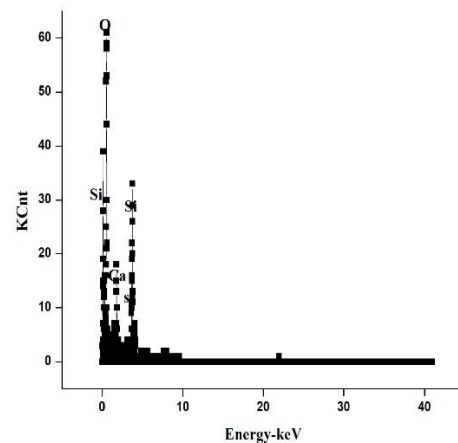
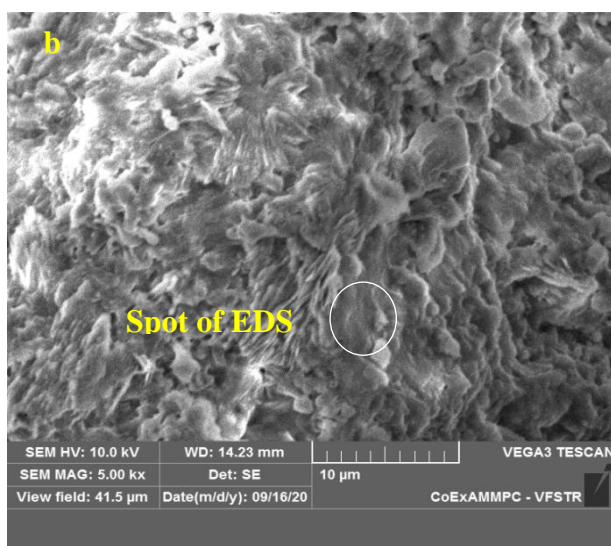
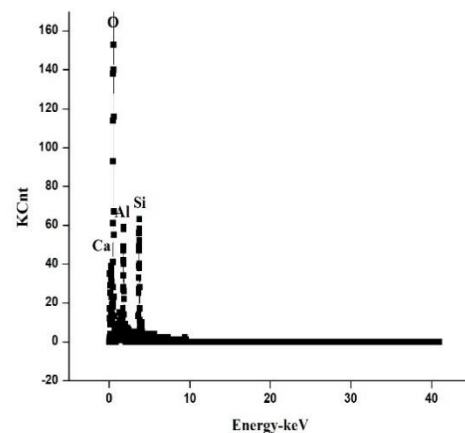
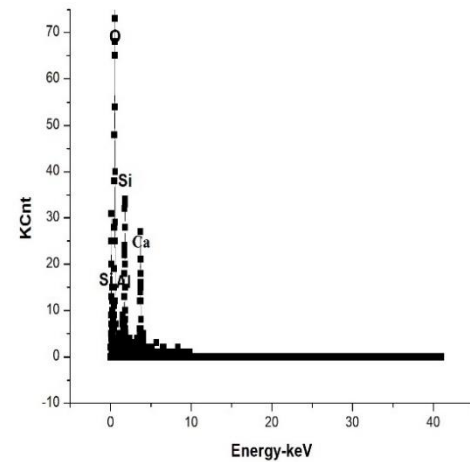
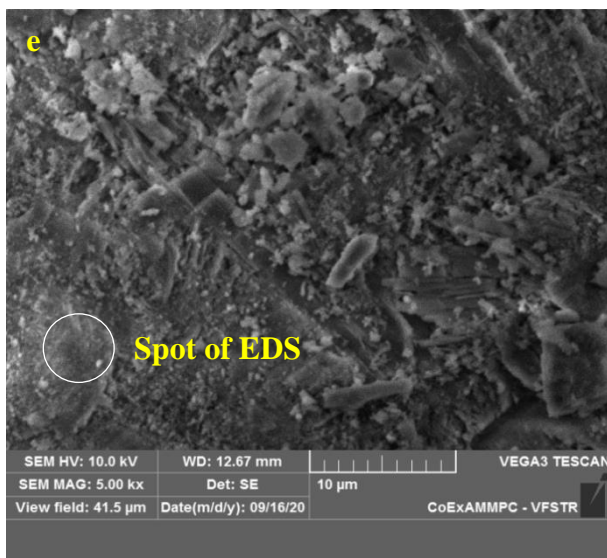
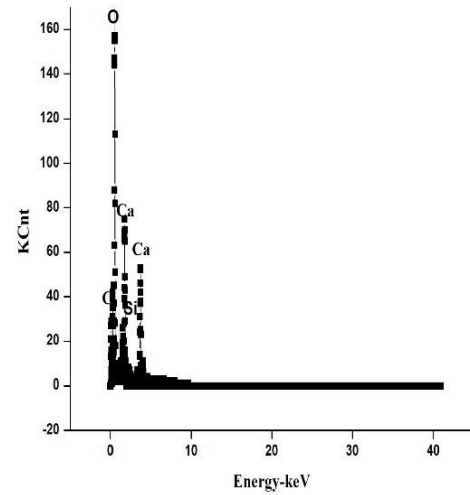
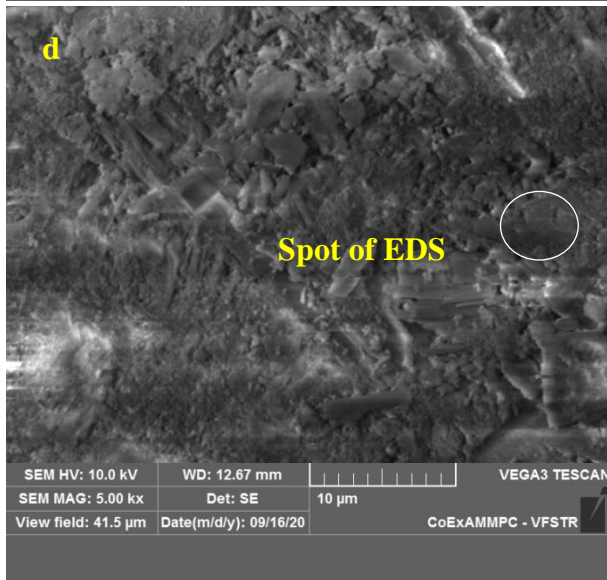
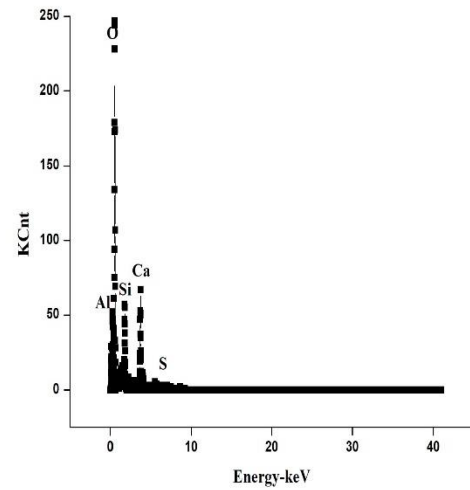
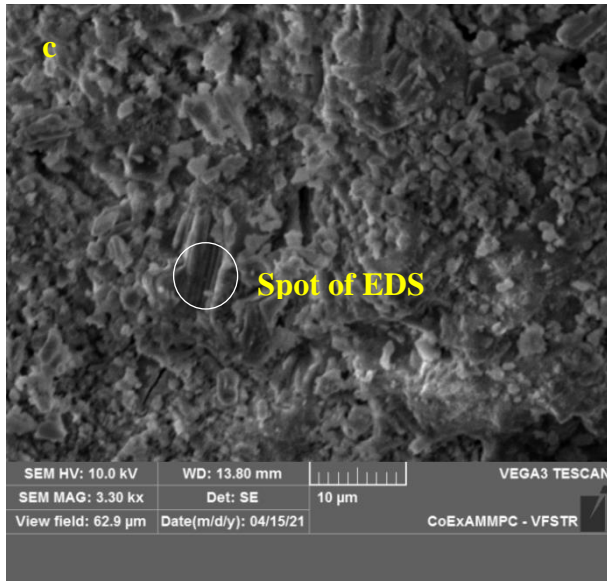


Figure 12: SEM images of a.C0S, b.C5S, c.C10S, d.C15S, e.C20S, f.C25S, g.C30S, and h.C35S

Energy Dispersive Spectroscopy graph shows that the energy peaks that overlap the elements. The elements like O, Al, Ca, Si, and S were observed, and the energy spots were observed from SEM images. Table 7 represents the atomic weights of the elements detected from EDS. The elements from Figure 13a-h are responsible for the formation of C-S-H gel during the hydration process.





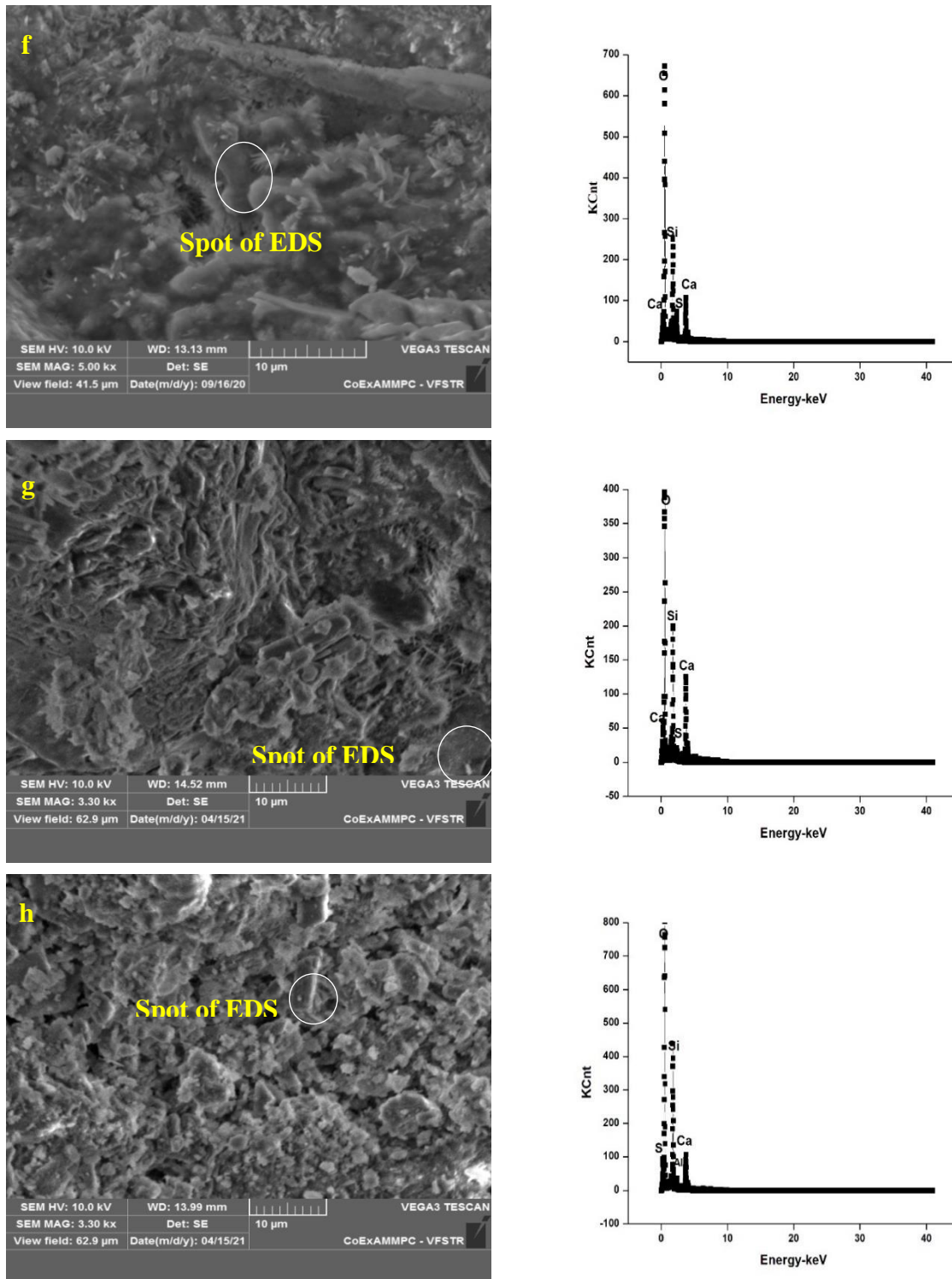


Figure 12: EDS images of a.C0S, b.C5S, c.C10S, d.C15S, e.C20S, f.C25S, g.C30S, and h.C35S

Atomic Weight of Element from EDS analysis	Name of sample Mix								
	Element	C0S	C5S	C10S	C15S	C20S	C25S	C30S	C35S
O	62.45	61	62.22	62.59	68.13	65.63	68.19	58.52	
Ca	20.48	18.96	17.95	19.68	14.08	21.70	27.25	27.25	
Si	6.52	9.83	10.29	11.20	11.95	11.53	17.35	6.15	
Al	1.20	1.11	0.89	1.09	1.73	0.63	1.04	0.74	
C	8.95	6.79	8.96	5.36	4.11	4.09	1.34	5.34	

Table 7: Atomic Weight of elements from EDS

4. Conclusions

The following conclusions were drawn purely from the investigations done on snail shell powder-based cement mortar-like microstructural analysis and durability properties.

- Snail shell powder is composed of a high amount of calcium and silica. This results in greater strength at a primitive time than nominal mortar mix.
- All mixes have greater strength improvement with an age of curing, but C30S has observed more strength than all mixes. The strength improvement is because of the high alkaline nature of snail shell powder that accelerates pozzolanic activity between cementitious materials.
- Pores, cracks, and voids in mortar are sealed with snail shell powder during the hydration process. And also, C-S-H gel formed in the hydration process resulting in a dense structure in mortar. The effectiveness of snail shell powder mortar has been identified in Sorptivity, Water Absorption and RCP Test.
- In C30S mix sample shows less amount of Ca/Si ratio resulting from achieving greater strength.
- SEM images show the dense structure, leading to more strength than the nominal mortar mix.
- Microstructural analysis was disclosed that the formation of Ettringite results in C-S-H gel formation than the nominal mix.
- The values obtained from all experiments prove that the snail shell powder mortar can replace nominal mortar in all Civil Engineering Aspects.

This research highlights the usage of snail shell powder mortar, and further research has been developed in constructional fields by considering some aspects.

- (i) The snail shell powder will lead to sustainable By-products as a cementitious material that releases less CO₂ than a nominal mortar.
- (ii) It lessens the use of cement in all civil engineering constructions.
- (iii) 30 wt % replacement of snail shell powder-based mortar can be recommended from the results.

Acknowledgements

The authors are thankful to the Centre of Excellence for Advanced Materials, Manufacturing, Processing, and Characterization (CoEAMMPC) for conducting XRD, SEM, and EDS and thanking the VFSTR for the support and lab facility for the smooth conduction of research work.

References

- ASTM C 618 (2008). "Standard specification for coal F.A. and raw or calcined natural pozzolan for use in concrete". ASTM International, West Conshohocken.
- ASTM C1202-12 (2012). "Standard test method for electrical indication of concrete's ability to resist chloride ion penetration". ASTM International, West Conshohocken, PA.
- ASTM C150, C150M-19a (2019). "Standard specification for Portland cement. ASTM International". West Conshohocken.
- ASTM C1585-20 (2020). "Standard test method for measurement of rate of absorption of water by hydraulic-cement concretes". ASTM International, West Conshohocken.
- BIS (1959), I.S.: 1199-1959, "Specification for method of test for water absorption concrete". Bureau of Indian Standards. New Delhi, India.
- BIS (1978), I.S.: 9013-1978. "Specification for method of curing of concrete". Bureau of Indian Standards. New Delhi, India.

- BIS (1981), IS 2250-1981. "Specification for preparation and use of masonry mortar, Bureau of Indian Standards". New Delhi, India.
- BIS, IS 516-2013 (2013). "Specification for method of tests for concrete". Bureau of Indian Standards. New Delhi, India.
- BIS, IS 383-2016 (2016). "specification for coarse and fine aggregates from natural sources for concrete". Bureau of Indian Standards. New Delhi.
- A.A., Umoh, and Olusola K.O. 2013. "Performance of Periwinkle Shell Ash Blended Cement Concrete Exposed to Magnesium Sulphate." *Civil Engineering Dimension* 15 (2): 96–101. <https://doi.org/10.9744/ced.15.2.96-101>.
- Abdel-Raheem, M., L. M. Gómez Santana, M. A. Piñeiro Cordava, and B. Olazaran Martínez. 2017. "Uses of Red Mud as a Construction Material," 388–99. <https://doi.org/10.1061/9780784480502.032>.
- Bellum, Ramamohana Reddy, Karthikeyan Muniraj, and Sri Rama Chand Madduru. 2020. "Exploration of Mechanical and Durability Characteristics of Fly Ash-GGBFS Based Green Geopolymer Concrete." *SN Applied Sciences* 2 (5): 919. <https://doi.org/10.1007/s42452-020-2720-5>.
- Chakraborty, Sumit, Sarada P. Kundu, Aparna Roy, Basudam Adhikari, and S. B. Majumder. 2013. "Effect of Jute as Fiber Reinforcement Controlling the Hydration Characteristics of Cement Matrix." *Industrial & Engineering Chemistry Research* 52 (3): 1252–60. <https://doi.org/10.1021/ie300607r>.
- Devendran, N. n.d. "Experimental Study on Strengthening Of Concrete by Replacing Seashell and Flyash." *International Journal of Computational Engineering Research* 7 (7): 22–28.
- Elliott Richardson, Alan, and Thomas Fuller. 2013. "Sea Shells Used as Partial Aggregate Replacement in Concrete." *Structural Survey* 31 (5): 347–54. <https://doi.org/10.1108/SS-12-2012-0041>.
- Food and Agriculture of the United Nations, ed. 2018. "Meeting the Sustainable Development Goals". *The State of World Fisheries and Aquaculture 2018*. Rome: FAO. <https://www.fao.org/3/i9540en/I9540EN.pdf>.
- Indukuri, Chandra Sekhar Reddy, Ruben Nerella, and Sri Rama Chand Madduru. 2019. "Effect of Graphene Oxide on Microstructure and Strengthened Properties of Fly Ash and Silica Fume Based Cement Composites." *Construction and Building Materials* 229 (December): 116863. <https://doi.org/10.1016/j.conbuildmat.2019.116863>.
- Kumar, P. Sateesh, Chetan Kumar, P. Yuvaraj, B. Madhan kumar, and E. Mohan. 2016. "A Partial Replacement for Coarse Aggregate by Sea Shell and Cement by Lime in Concrete." *Imperial Journal of Interdisciplinary Research* 2 (5): 1131–36. <https://www.semanticscholar.org/paper/A-Partial-Replacement-for-Coarse-Aggregate-by-Sea-Kumar-Kumar/4351c207cd4a13848c59796a38980f050ede3685>.
- Lalitha, Gurikini, and Krishna Raju. 2014. "Experimental Study on Performance of Concrete M30 with Partial Replacement of Coarse Aggregate with Sea Shells and Coconut Shells." *International Journal of Engineering Research and Applications* 4 (8): 148–51. https://www.researchgate.net/publication/266135078_Experimental_Study_on_Performance_of_Concrete_M30_with_Partial_Replacement_of_Coarse_Aggregate_with_Sea_Shells_and_Coconut_Shells.
- Niger Delta University, Orlando Ketebu, and Salome T Farrow. 2017. "Comparative Study on Cementitious Content of Ground Mollusc Snail and Clam Shell and Their Mixture as an

- Alternative to Cement.” *International Journal of Engineering Trends and Technology* 50 (1): 8–11. <https://doi.org/10.14445/22315381/IJETT-V50P202>.
- Okpala, D.C. 1987. “Rice Husk Ash (Rha) as Partial Replacement of Cement in Concrete.” In , 20–25. Port Harcourt, Nigeria.
- Olivia, Monita, Annisa Arifandita Mifshella, and Lita Darmayanti. 2015. “Mechanical Properties of Seashell Concrete.” *Procedia Engineering* 125: 760–64. <https://doi.org/10.1016/j.proeng.2015.11.127>.
- Othman, Nor Hazurina, Badorul Hisham Abu Bakar, Mashitah Mat Don, and Megat Azmi Megat Johari. 2013. “Cockle Shell Ash Replacement for Cement and Filler in Concrete.” *Malaysian Journal of Civil Engineering* 25 (2): 200–211. <https://doi.org/10.11113/mjce.v25.15853>.
- Oyetola, E. B., and Mohammed Abdullahi. 2006. “The Use of Rice Husk Ash in Low-Cost Sandcrete Block Production.” *Leonardo Electronic Journal of Practices and Technologies* 5: 58–70.
- Rathod, Ramesh, Nagesh Suryawanshi, and Pravin Memade. 2012. “Evaluation of the Properties of Red Mud Concrete ‘Performance of Low Density Foamed Concrete (LDFC) Integrated with Industrial and Agricultural Nano-Wastes for Sustainable Development’ View Project Evaluation of the Properties of Red Mud Concrete.” *Journal of Mechanical and Civil Engineering*, 31–34.
- Samal, Sneha, Ajoy K. Ray, and Amitava Bandopadhyay. 2013. “Proposal for Resources, Utilization and Processes of Red Mud in India — A Review.” *International Journal of Mineral Processing* 118 (January): 43–55. <https://doi.org/10.1016/j.minpro.2012.11.001>.
- Singh, Nakshatra. 2018. “Fly Ash-Based Geopolymer Binder: A Future Construction Material.” *Minerals* 8 (7): 299. <https://doi.org/10.3390/min8070299>.
- Sri Rama Chand, Madduru, Pancharathi Rathish Kumar, Pallapothu Swamy Naga Ratna Giri, and Garje Rajesh Kumar. 2018. “Performance and Microstructure Characteristics of Self-Curing Self-Compacting Concrete.” *Advances in Cement Research* 30 (10): 451–68. <https://doi.org/10.1680/jadcr.17.00154>.
- Udoeyo, Felix F., Hilary Inyang, David T. Young, and Edmund E. Oparadu. 2006. “Potential of Wood Waste Ash as an Additive in Concrete.” *Journal of Materials in Civil Engineering* 18 (4): 605–11. [https://doi.org/10.1061/\(ASCE\)0899-1561\(2006\)18:4\(605\)](https://doi.org/10.1061/(ASCE)0899-1561(2006)18:4(605)).
- Varhen, Christian, Shirley Carrillo, and Gaby Ruiz. 2017. “Experimental Investigation of Peruvian Scallop Used as Fine Aggregate in Concrete.” *Construction and Building Materials* 136 (April): 533–40. <https://doi.org/10.1016/j.conbuildmat.2017.01.067>.
- Venkatesh, Chava, Syed Khaja Mohiddin, and N. Ruben. 2019. “Corrosion Inhibitors Behaviour on Reinforced Concrete—A Review.” In *Sustainable Construction and Building Materials*, edited by Bibhuti Bhusan Das and Narayanan Neithalath, 127–34. *Lecture Notes in Civil Engineering*. Singapore: Springer. https://doi.org/10.1007/978-981-13-3317-0_11.
- Venkatesh, Chava, Ruben Nerella, and Madduru Sri Rama Chand. 2020. “Role of Red Mud as a Cementing Material in Concrete: A Comprehensive Study on Durability Behavior.” *Innovative Infrastructure Solutions* 6 (1): 1–14. <https://doi.org/10.1007/s41062-020-00371-2>.
- Xu, Sailong, Bowen Zhang, Zhanrui Chen, Jianhui Yu, David G. Evans, and Fazhi Zhang. 2011. “A General and Scalable Formulation of Pure CaAl-Layered Double Hydroxide via an Organic/Water Solution Route.” *Industrial & Engineering Chemistry Research* 50 (11): 6567–72. <https://doi.org/10.1021/ie102135k>.

- Yusof, Mahshuri, Faridah Sahari, James Ujai, S.N.L Taib, and N.H. Noor Mohamed. 2011. "Application of Clam (Lokan) Shell as Beach Retaining Wall." Proceedings of EnCon20114 Th Engineering Conference, 1–4. https://www.academia.edu/1446703/Application_of_Clam_lokan_Shell_as_Beach_Retaining_Wall.
- Zaid, Syed Talha, and Vaishali G. Ghorpade. 2014. "Experimental Investigation of Snail Shell Ash (SSA) as Partial Replacement of Ordinary Portland Cement in Concrete." International Journal of Engineering Research & Technology 3 (10): 1049–53.