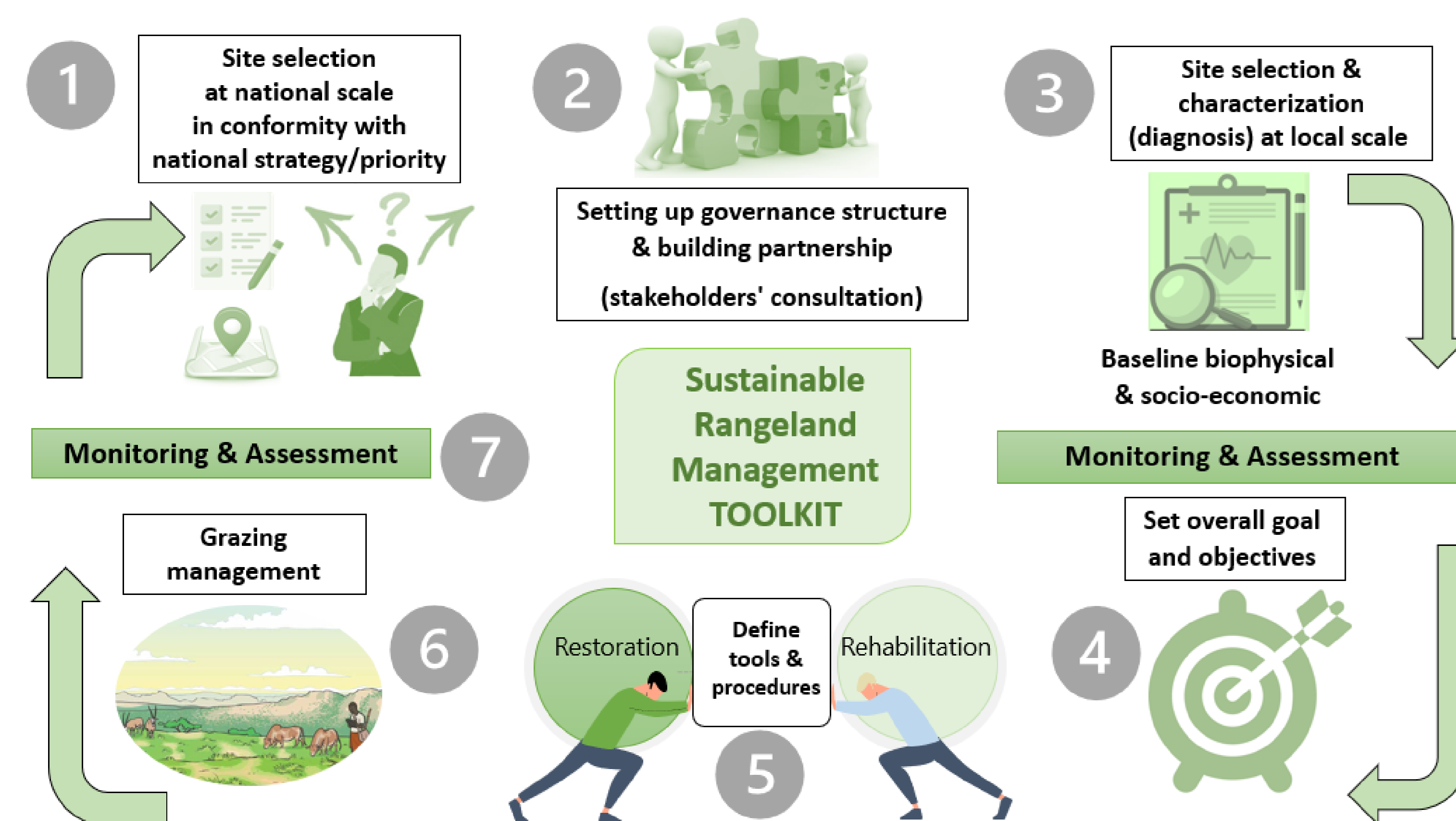


Context

- Many **large-scale rangeland restoration** projects are **failing**.
- The **root cause** of rangeland degradation is usually not addressed properly because of **poor diagnostic**.
- Development projects are always looking for **short term fix solutions** while degradation of natural resources took place over long period of time.
- **Livestock grazing is part of the solution** as grazing exclusion can have negative consequences.

Our innovative approach

- **Enhance capacities** of practitioners to think holistically before taking actions
- Carefully **select target site** with relevant stakeholders
- Set up the **governance structure** and **build partnerships**
- Undertake **baseline survey** and set up **monitoring & assessment protocols**
- Define **overall goal** and **specific objectives**
- Use **site specific tools** and **procedures**



Sustainable rangeland management (SRM) toolkit with a holistic approach for addressing the socioecological aspects leading to more resilient pastoral systems

- SRM toolkit advocates for a holistic and participatory multi-stakeholder approach for better managed rangelands.
- SRM toolkit ensures that decisions are based on both indigenous knowledge and modern science to address site-specific challenges.
- SRM toolkit assists and prepares practitioners to perform proper diagnostic, plan, and implement specific interventions and continuously monitor and evaluate rehabilitation or restoration efforts.
- SRM toolkit includes case studies that demonstrate step by step how the toolkit is used to identify practical solutions that enhance socioecological sustainability and resilience of pastoral systems.

Mounir Louhaichi, ICARDA
m.louhaichi@cgiar.org

Sawsan Hassan, ICARDA
s.hassan@cgiar.org

Progress/outcomes

- At least two sites are under improved management covering an areas of over 100,000 ha.
- We work with the forestry department and other developing agencies to develop specific guidelines and policies leading to improved governance, management and/ or restoration of agrosilvopastoral systems
- SRM toolkit is now being used for training purposes by IUCN as well as local university.
- SRM toolkit has global application under the UN Decade of Ecosystem Restoration and the upcoming 2026 UN designated Year of Rangelands and Pastoralists.
- Three case studies have been already developed covering, North Africa, West Asia and Central Asia. The plan for 2023/24 is to add new case studies from Sub-Saharan Africa.



A female pastoralist grazing her sheep in a restored silvopastoral site in Central Tunisia using SRM toolkit guidelines. Photo Mounir Louhaichi/ILRI

