



King's Research Portal

DOI:

[10.1016/j.jad.2022.12.022](https://doi.org/10.1016/j.jad.2022.12.022)

Document Version

Peer reviewed version

[Link to publication record in King's Research Portal](#)

Citation for published version (APA):

Solmi, M., Thompson, T., Estrade Vaz, A., Agorastos, A., Radua, J., Dragioti, E., Leisch, F., Vancampfort, D., Thygesen, L. C., Aschauer, H., Schloegelhofer, M., Aschauer, E., Schneeberger, A., Huber, C. G., Hasler, G., Conus, P., Cuénod, K. Q. D., von Känel, R., Arrondo, G., ... San José Cáceres, A. (2022). Validation of the collaborative outcomes study on health and functioning during infection times (COH-FIT) questionnaire for adults. *Journal of affective disorders*. <https://doi.org/10.1016/j.jad.2022.12.022>

Citing this paper

Please note that where the full-text provided on King's Research Portal is the Author Accepted Manuscript or Post-Print version this may differ from the final Published version. If citing, it is advised that you check and use the publisher's definitive version for pagination, volume/issue, and date of publication details. And where the final published version is provided on the Research Portal, if citing you are again advised to check the publisher's website for any subsequent corrections.

General rights

Copyright and moral rights for the publications made accessible in the Research Portal are retained by the authors and/or other copyright owners and it is a condition of accessing publications that users recognize and abide by the legal requirements associated with these rights.

- Users may download and print one copy of any publication from the Research Portal for the purpose of private study or research.
- You may not further distribute the material or use it for any profit-making activity or commercial gain
- You may freely distribute the URL identifying the publication in the Research Portal

Take down policy

If you believe that this document breaches copyright please contact librarypure@kcl.ac.uk providing details, and we will remove access to the work immediately and investigate your claim.

Validation of the Collaborative Outcomes study on Health and Functioning during Infection Times (COH-FIT) questionnaire for adults

Marco Solmi^{1,2,3,4,5,6*}, Trevor Thompson^{7*}, Andrés Estradé^{4,8}, Agorastos Agorastos⁹, Joaquim Radua^{4,10,11}, Samuele Cortese¹², Elena Dragioti^{13,14}, Friedrich Leisch¹⁵, Davy Vancampfort¹⁶, Lau Caspar Thygesen¹⁷, Harald Aschauer¹⁸, Monika Schloegelhofer¹⁸, Elena Aschauer¹⁸, Andres Schneeberger¹⁹, Christian G. Huber²⁰, Gregor Hasler²¹, Philippe Conus²², Kim Q. Do Cuénod²², Roland von Känel²³, Gonzalo Arrondo^{12,24}, Paolo Fusar-Poli^{4,25,26}, Philip Gorwood^{27,28}, Pierre-Michel Llorca²⁹, Marie-Odile Krebs^{28,30}, Elisabetta Scanferla²⁷, Taishiro Kishimoto³¹, Golam Rabbani³², Karolina Skonieczna-Żydecka³³, Paolo Brambilla^{34,35}, Angela Favaro³⁶, Akihiro Takamiya³¹, Leonardo Zocante³⁷, Marco Colizzi³⁸, Julie Bourgin³⁹, Karol Kamiński⁴⁰, Maryam Moghadasi⁴¹, Soraya Seedat⁴², Evan Matthews⁴³, John Wells⁴³, Emilia Vassilopoulou⁴⁴, Ary Gadelha⁴⁵, Kuan-Pin Su^{46,114}, Jun Soo Kwon⁴⁷, Minah Kim⁴⁸, Tae Young Lee⁴⁹, Oleg Papsuev⁵⁰, Denisa Manková⁵¹, Andrea Boscutti³⁴, Cristiano Gerunda³⁶, Diego Saccon⁵², Elena Righi⁵³, Francesco Monaco⁵⁴, Giovanni Croatto⁵⁵, Guido Cereda³⁴, Jacopo Demurtas⁵⁶, Natascia Brondino²⁶, Nicola Veronese⁵⁷, Paolo Enrico³⁴, Pierluigi Politi²⁶, Valentina Ciappolino³⁵, Andrea Pfennig⁵⁸, Andreas Bechdolf⁵⁹, Andreas Meyer-Lindenberg⁶⁰, Kai G. Kahl⁶¹, Katharina Domschke⁶², Michael Bauer⁵⁸, Nikolaos Koutsouleris⁶³, Sibylle Winter⁶, Stefan Borgwardt⁶⁴, Istvan Bitter⁶⁵, Judit Balazs^{66,67}, Pal Czobor⁶⁵, Zsolt Unoka⁶⁵, Dimitris Mavridis⁶⁸, Konstantinos Tsamakis⁶⁹, Vasilios P. Bozikas⁹, Chavit Tunvirachaisakul⁷⁰, Michael Maes⁷⁰, Teerayuth Rungnirundorn⁷⁰, Thitiporn Supasitthumrong⁷⁰, Ariful Haque³², Andre R. Brunoni⁷¹, Carlos Gustavo Costardi⁴⁵, Felipe Barreto Schuch⁷², Guilherme Polanczyk⁷¹, Jhoanne Merlyn Luiz⁷³, Lais Fonseca⁴⁵, Luana V. Aparicio⁷¹, Samira S. Valvassori⁷³, Merete Nordentoft⁷⁴, Per Vendsborg⁷⁵, Sofie Have Hoffmann¹⁷, Jihed Sehli²¹, Norman Sartorius⁷⁶, Sabina Heuss⁷⁷, Daniel Guinart^{78,79,80}, Jane Hamilton⁸¹, John Kane^{78,82}, Jose Rubio^{78,82}, Michael Sand⁸³, Ai Koyanagi⁸⁴, Aleix Solanes¹⁰, Alvaro Andreu-Bernabeu⁸⁵, Antonia San José Cáceres⁸⁵, Celso Arango⁸⁵, Covadonga M. Díaz-Caneja⁸⁵, Diego Hidalgo-Mazzei⁸⁶, Eduard Vieta⁸⁶, Javier Gonzalez-Peñas⁸⁵, Lydia Fortea¹⁰, Mara Parellada⁸⁵, Miquel A. Fullana¹⁰, Norma Verdolini⁸⁷, Eva Andrlíková⁵¹, Karolina Janků⁵¹, Mark John Millan⁸⁸, Mihaela Honciuc²⁹, Anna Moniuszko-Malinowska⁸⁹, Igor Łoniewski^{33,90}, Jerzy Samochowiec⁹¹, Łukasz Kiszkiel⁹², Maria Marlicz³³, Paweł Sowa⁴⁰, Wojciech Marlicz^{93,94}, Georgina Spies⁴², Brendon Stubbs⁹⁵, Joseph Firth⁹⁶, Sarah Sullivan⁹⁷, Asli Enez Darcin⁹⁸, Hatice Aksu⁹⁹, Nesrin Dilbaz¹⁰⁰, Onur Noyan¹⁰⁰, Momoko Kitazawa³¹, Shunya Kurokawa³¹, Yuki Tazawa³¹, Alejandro Anselmi⁸, Cecilia Cracco⁸, Ana Inés Machado⁸, Natalia Estrades⁸, Diego De Leo¹⁰¹, Jackie Curtis¹⁰², Michael Berk¹⁰³, Philip Ward¹⁰⁴, Scott Teasdale¹⁰³, Simon Rosenbaum¹⁰⁴, Wolfgang Marx¹⁰³, Adrian Vasile Horodnic¹⁰⁵, Liviu Oprea¹⁰⁵, Ovidiu Alexinschi¹⁰⁶, Petru Ifteni¹⁰⁷, Serban Turliuc¹⁰⁵, Tudor Ciuhodaru¹⁰⁸, Alexandra Bolos¹⁰⁵, Valentin Matei¹⁰⁹, Dorien H. Nieman¹¹⁰, Iris Sommer^{111,112}, Jim van Os¹¹³, Therese van Amelsvoort¹¹⁴, Ching-Fang Sun^{115,116}, Ta-wei Guu¹¹⁷, Can Jiao¹¹⁸, Jieting Zhang¹¹⁸, Jialin Fan¹¹⁸, Liye Zou¹¹⁸, Xin Yu¹¹⁹, Xinli Chi¹¹⁸, Philippe de Timary¹²⁰, Ruud van Winkel¹²¹, Bernardo Ng¹²², Edilberto Pena¹²², Ramon Arellano¹²², Raquel Roman¹²², Thelma Sanchez¹²², Larisa Movina⁵⁰, Pedro Morgado^{123,124}, Sofia Brissos¹²⁵, Oleg Aizberg¹²⁶, Anna Mosina¹²⁷, Damir Krinitski¹²⁸, James Mugisha¹²⁹, Dena Sadeghi-Bahmani^{130,131}, Farshad Sheybani¹³², Masoud Sadeghi¹³³, Samira Hadi¹³⁴, Serge Brand^{131,135,136,137,138}, Antonia Errazuriz¹³⁹, Nicolas Crossley¹³⁹, Dragana Ignjatovic Ristic¹⁴⁰, Carlos López-Jaramillo¹⁴¹, Dimitris Efthymiou⁴⁴, Praveenlal Kuttichira¹⁴², Roy Abraham Kallivayalil¹⁴³, Afzal Javed¹⁴⁴, Muhammad Iqbal Afridi^{145,146,147}, Bawo James¹⁴⁸, Omonefe Joy Seb-Akahomen¹⁴⁹, Jess Fiedorowicz^{1,2,3}, Andre F. Carvalho¹⁰³, Jeff Daskalakis¹⁵⁰, Lakshmi N. Yatham¹⁵¹, Lin Yang¹⁵², Tarek Okasha¹⁵³, Aïcha Dahdouh¹⁵⁴, Björn Gerdle¹³, Jari Tiihonen¹¹, Jae Il Shin¹⁵⁵, Jinhee Lee¹⁵⁶, Ahmed Mhalla¹⁵⁷, Lotfi Gaha¹⁵⁷, Takoua Brahim¹⁵⁸, Kuanysh Altynbekov¹⁵⁹, Nikolay Negay¹⁵⁹, Saltanat Nurmagambetova¹⁵⁹, Yasser Abu Jamei¹⁶⁰, Mark Weiser¹⁶¹, Christoph U. Correll^{6,78,79[§]}

* Joint first authors

[§] **Corresponding author:** Christoph U. Correll, MD, Department of Child and Adolescent Psychiatry, Psychosomatic Medicine and Psychotherapy, Charité University Medical Center, Campus Virchow, Augustenburger Platz 1, D-13353, Berlin, Germany. Tel.: +49 30 450 566202 , Fax: +49 30 450 566921 , E-mail: christoph.correll@charite.de

Affiliations

- 1 University of Ottawa, Department of Psychiatry, Ontario, Canada
- 2 The Ottawa Hospital, Department of Mental Health, Ontario, Canada
- 3 Ottawa Hospital Research Institute (OHRI) Clinical Epidemiology Program, Ottawa Ontario
- 4 Early Psychosis: Interventions and Clinical-detection (EPIC) Lab, Department of Psychosis Studies, Institute of Psychiatry, Psychology & Neuroscience, King's College London, London, United Kingdom
- 5 Centre for Innovation in Mental Health-Developmental Lab, School of Psychology, University of Southampton, and NHS Trust, Southampton, United Kingdom
- 6 Charité Universitätsmedizin Berlin, Department of Child and Adolescent Psychiatry, Berlin, Germany
- 7 Centre for Chronic Illness and Ageing, University of Greenwich, London, United Kingdom
- 8 Universidad Católica, Department of Psychology, Montevideo, Uruguay
- 9 Aristotle University of Thessaloniki, II. Dept. of Psychiatry, Division of Neurosciences, Medical School, Faculty of Health Sciences, Greece
- 10 Institut d'Investigacions Biomèdiques August Pi i Sunyer (IDIBAPS), Imaging of Mood- and Anxiety-Related Disorders (IMARD), CIBERSAM, Barcelona, Spain
- 11 Karolinska Institutet, Centre for Psychiatric Research and Education, Department of Clinical Neuroscience, Stockholm, Sweden
- 12 University of Southampton, Centre for Innovation in Mental Health, Southampton, United Kingdom
- 13 Linköping University, Pain and Rehabilitation Centre and Department of Health, Medicine and Caring Sciences, Linköping, Sweden
- 14 University of Ioannina, Research Laboratory Psychology of Patients, Families & Health Professionals, Department of Nursing, School of Health Sciences, Ioannina, Greece
- 15 University of Natural Resources and Life Sciences, Wien, Austria
- 16 Katholieke Universiteit Leuven (KU Leuven), Department of Rehabilitation Sciences, Leuven, Belgium
- 17 National Institute of Public Health, University of Southern Denmark, Denmark
- 18 BioPsyC - Biopsychosocial Corporation, Non-profit association for Research Funding Ltd., Vienna, Austria
- 19 University of California San Diego, California, United States
- 20 University of Basel, Universitäre Psychiatrische Kliniken Basel (UPK), Basel, Switzerland
- 21 University of Fribourg, Fribourg Network of Mental Health (RFSM), Fribourg, Switzerland
- 22 University of Lausanne, Department of Psychiatry, Lausanne, Switzerland
- 23 University Hospital Zurich, Department of Consultation-Liaison Psychiatry and Psychosomatic Medicine, Switzerland
- 24 University of Navarra, Mind-Brain Group, Institute for Culture and Society (ICS), Pamplona, Spain
- 25 OASIS service, South London and Maudsley NHS Foundation Trust, London, United Kingdom
- 26 University of Pavia, Department of Brain and Behavioral Sciences, Pavia, Italy
- 27 Université Paris Cité, CMME, GHU Paris Psychiatrie et Neurosciences, Paris, France
- 28 Institute de Psychiatrie et Neurosciences de Paris, INSERM U1266, F-75014, Paris, France
- 29 Université Clermont Auvergne, CHU Clermont-Ferrand, Service de Psychiatrie B, Clermont-Ferrand, France
- 30 Université de Paris, PEPIT, GHU Paris Psychiatrie et Neurosciences, Paris, France
- 31 Keio University School of Medicine, Department of Neuropsychiatry, Tokyo, Japan
- 32 The National Foundation of Mental Health of Bangladesh, Bangladesh
- 33 Pomeranian Medical University in Szczecin, Department of Biochemical Sciences, Szczecin, Poland
- 34 University of Milan, Department of Pathophysiology and Transplantation, Milan, Italy
- 35 Fondazione IRCCS Ca' Granda Ospedale Maggiore Policlinico, Department of Neurosciences and Mental Health, Milan, Italy
- 36 University of Padua, Neurosciences Department, Padua, Italy
- 37 Integrated University Hospital of Verona, Child and Adolescent Neuropsychiatry Unit, Maternal-Child Integrated Care Department, Verona, Italy
- 38 University of Udine, Department of Medicine (DAME), Unit of Psychiatry, Italy
- 39 Service de Psychiatrie de l'enfant et de l'adolescent, GHNE, 91440 Bures Sur Yvette, France
- 40 Medical University of Białystok, Department of Population Medicine and Lifestyle Diseases Prevention, Białystok, Poland
- 41 Kharazmi University, Department of Clinical Psychology, Faculty of Psychology and Education, Tehran, Iran
- 42 Stellenbosch University, Department of Psychiatry, Faculty of Medicine and Health Sciences, South Africa
- 43 South East Technological University, School of Health Science, Waterford, Ireland
- 44 University of Nicosia, Department of Life and Health Sciences, Nicosia, Cyprus
- 45 Universidade Federal de São Paulo, Department of Psychiatry, São Paulo, Brazil
- 46 An-Nan Hospital, China Medical University, Department of Psychiatry, Tainan, Taiwan
- 47 Seoul National University College of Medicine, Department of Psychiatry, Seoul, Republic of Korea
- 48 Seoul National University Hospital, Department of Neuropsychiatry, Seoul, Republic of Korea
- 49 Pusan National University Yangsan Hospital, Department of Psychiatry, Yangsan, Republic of Korea
- 50 Moscow Research Institute of Psychiatry, Moscow, Russia
- 51 National Institute of Mental Health, Klecany, Czech Republic
- 52 AUSLSS4 Veneto Orientale, Addictions Department, Italy
- 53 University of Modena and Reggio Emilia, Department of Biomedical, Metabolic and Neural Sciences, Modena, Italy
- 54 ASL Salerno, Department of Mental Health, Salerno, Italy
- 55 University of Padova, Padova, Italy
- 56 University of Modena and Reggio Emilia, Clinical and Experimental Medicine PhD Program, Modena, Italy
- 57 University of Palermo, Department of Internal Medicine, Geriatrics Section, Palermo, Italy
- 58 Technische Universität Dresden, University Hospital Carl Gustav Carus, Department of Psychiatry and Psychotherapy, Dresden, Germany
- 59 Charité Universitätsmedizin Berlin, Department of Psychiatry and Psychotherapy, Berlin, Germany
- 60 Heidelberg University, Central Institute of Mental Health, Medical Faculty Mannheim, Germany
- 61 Hannover Medical School, Department of Psychiatry, Social Psychiatry and Psychotherapy, Germany
- 62 University of Freiburg, Department of Psychiatry and Psychotherapy, Medical Center – University of Freiburg, Faculty of Medicine, Freiburg, Germany

- 1 63Ludwig-Maximilians-University of Munich, Munich, Germany
- 2 64University of Lübeck, Lübeck, Germany
- 3 65Simmelweis University, Department of Psychiatry and Psychotherapy, Budapest, Hungary
- 4 66Eotvos Lorand University, Institute of Psychology, Budapest, Hungary
- 5 67Bjørknes University College, Oslo, Norway
- 6 68University of Ioannina, Department of Primary Education, Ioannina, Greece
- 7 69King's College London, Institute of Psychiatry, Psychology and Neuroscience, London, United Kingdom
- 8 70Chulalongkorn University, Department of Psychiatry, Thailand
- 9 71Faculdade de Medicina da Universidade de São Paulo, Departments of Internal Medicine and Psychiatry, São Paulo, Brazil
- 10 72Universidade Federal de Santa Maria, Department of Sports Methods and Techniques, Santa Maria, RS, Brazil
- 11 73Universidade do Extremo Sul Catarinense, Translational Psychiatry Laboratory, Graduate Program in Health Sciences, Criciúma, SC, Brazil
- 12 74University of Copenhagen, Copenhagen, Denmark
- 13 75Psykiatrifonden, Copenhagen, Denmark
- 14 76Association for the Improvement of Mental Health Programmes (AMH), Switzerland
- 15 77FHNW University of Applied Sciences and Arts Northwestern Switzerland, Switzerland
- 16 78The Zucker Hillside Hospital, Northwell Health, New York, USA
- 17 79Donald and Barbara Zucker School of Medicine at Hofstra/Northwell, New York, USA
- 18 80Universitat Autònoma de Barcelona, Centro de Investigación Biomédica en Red de Salud Mental (CIBERSAM), Institut de Neuropsiquiatria i Addiccions (INAD), Hospital del Mar, Institut Hospital del Mar d'Investigacions Mèdiques (IMIM), Departament de Psiquiatria, Barcelona, Spain
- 19 81University of Texas Health Science Center Houston, McGovern Medical School, Louis A. Faillace, MD, Department of Psychiatry and Behavioral Sciences, USA
- 20 82Feinstein Institutes for Medical Research, New York, USA
- 21 83S2 Consulting LLC
- 22 84Parc Sanitari Sant Joan de Deu, Research and Development Unit, CIBERSAM, ICREA, Barcelona, Spain
- 23 85 Hospital General Universitario Gregorio Marañón, Department of Child and Adolescent Psychiatry, Institute of Psychiatry and Mental Health (IPS MARAÑÓN), IISGM, CIBERSAM, Universidad Complutense, Madrid, Spain
- 24 86University of Barcelona, Hospital Clínic, IDIBAPS, CIBERSAM, Barcelona, Spain
- 25 87University of Barcelona, Hospital Clínic, Bipolar and Depressive Disorders Unit, Institute of Neuroscience, IDIBAPS, CIBERSAM, Barcelona, Spain
- 26 88Glasgow University, Institute of Neuroscience and Psychology, College of Medicine, Vet and Life Science, Glasgow, United Kingdom
- 27 89Medical University of Białystok, Department of Infectious Diseases and Neuroinfections, Poland
- 28 90Sanprobi Sp. z o.o. Sp. k, Poland
- 29 91Pomeranian Medical University in Szczecin, Department of Psychiatry, Szczecin, Poland
- 30 92University of Białystok, Institute of Sociology, Society and Cognition Unit, Białystok, Poland
- 31 93Pomeranian Medical University in Szczecin, Department of Gastroenterology, Szczecin, Poland
- 32 94The Centre for Digestive Diseases Endoklinika, Szczecin, Poland
- 33 95King's College London, London, United Kingdom
- 34 96University of Manchester, Division of Psychology and Mental Health, Manchester, United Kingdom
- 35 97University of Bristol, Bristol, United Kingdom
- 36 98Istanbul Basaksehir Cam ve Sakura City Hospital, Department of Psychiatry, Istanbul, Turkey
- 37 99Adnan Menderes University Department of Child and Adolescent Psychiatry, Aydın, Turkey
- 38 100Uskudar University, Department of Psychiatry and Psychology, Istanbul, Turkey
- 39 101Griffith University, South East Queensland, Australia
- 40 102Mindgardens Neuroscience Network, Sydney, Australia
- 41 103Deakin University School of Medicine, Victoria, Australia
- 42 104UNSW Sydney, School of Psychiatry, Sydney, Australia
- 43 105University of Medicine and Pharmacy Grigore T. Popa, Faculty of Medicine, Iasi, Romania
- 44 106Institute of Psychiatry "Socola", Iasi, Romania
- 45 107Transilvania University of Brasov, Faculty of Medicine, Brasov, Romania
- 46 108Emergency Hospital "Nicolae Oblu", Iasi, Romania
- 47 109Psychiatry Department, University of Medicine and Pharmacy "Carol Davila" Bucharest, "Prof. Dr. Alexandru Obregia" Psychiatric Hospital, Bucharest, Romania
- 48 110Academisch Medisch Centrum Universiteit van Amsterdam, Amsterdam, The Netherlands
- 49 111 University Medical Center Groningen, University of Groningen, Cognitive Neurosciences, Department of Biomedical Sciences of Cells & Systems, Groningen, The Netherlands
- 50 112University Medical Center Groningen, University of Groningen, Department of Psychiatry, Groningen, The Netherlands
- 51 113Utrecht University Medical Centre, Department of Psychiatry, Utrecht, The Netherlands
- 52 114Maastricht University, Department of Psychiatry and Neuropsychology, Maastricht, The Netherlands
- 53 115China Medical University Hospital, Mind-Body Interface Research Center, Taichung, Taiwan
- 54 116Department of Psychiatry and Behavioral Medicine, Carilion Clinic Virginia Tech Carilion School of Medicine, Roanoke, VA, USA
- 55 117China Medical University Beigang Hospital, Division of Psychiatry, Department of Internal Medicine, Taiwan
- 56 118Shenzhen University, School of Psychology, Shenzhen, China
- 57 119Peking University Institute of Mental Health, Department of Public Mental Health, Pekin, China
- 58 120 UCLouvain, Institute of Neuroscience and Cliniques Universitaires Saint-Luc, Department of Adult Psychiatry, Brussels, Belgium
- 59 121Katholieke Universiteit Leuven (KU Leuven), Department of Neurosciences, Leuven, Belgium
- 60 122Asociación Psiquiátrica Mexicana, Mexico
- 61 123University of Minho, Life and Health Sciences Research Institute (ICVS), School of Medicine, Braga, Portugal
- 62 124ICVS/3B's - PT Government Associate Laboratory, Braga/Guimarães, Portugal

- 1 125Lisbon's Psychiatric Hospital Centre, Department of Psychiatry, Portugal
- 2 126Belarusian Medical Academy of Postgraduate Education, Belarus
- 3 127Clienia AG, Wetzikon Psychiatric Centre, Switzerland
- 4 128Integrated Psychiatry Winterthur (IPW), Switzerland
- 5 129Kyambogo University, Department of Sociology and Social Administration, Kampala, Uganda
- 6 130Stanford University, Department of Psychology, California, USA
- 7 131Universitäre Psychiatrische Kliniken Basel (UPK), Center of Affective, Stress and Sleep Disorders (ZASS), Basel, Switzerland
- 8 132Department of Clinical Psychology, Mashhad University of Medical Sciences
- 9 133Kermanshah University of Medical Sciences, Medical Biology Research Center, Kermanshah, Iran
- 10 134Kharazmi University, Tehran, Iran
- 11 135University of Basel, Department of Sport, Exercise, and Health, Division of Sport Science and Psychosocial Health, Basel, Switzerland
- 12 136Kermanshah University of Medical Sciences, Substance Abuse Prevention Research Center, Kermanshah, Iran
- 13 137Kermanshah University of Medical Sciences, Sleep Disorders Research Center, Kermanshah, Iran
- 14 138Tehran University of Medical Sciences, School of Medicine, Tehran, Iran
- 15 139Pontificia Universidad Católica de Chile, Department of Psychiatry, School of Medicine, Santiago, Chile
- 16 140University of Kragujevac, Department of Psychiatry, Faculty of Medical Sciences, Kragujevac, Serbia
- 17 141University of Antioquia, Department of Psychiatry, Medellín, Colombia
- 18 142Jubilee Mission Medical College & Research Institute, Thrissur, India
- 19 143Pushpagiri Institute of Medical Sciences, Department of Psychiatry, Thiruvalla, Kerala, India
- 20 144Chairman, Pakistan Psychiatric Research Centre-Fountain House, Lahore, Pakistan
- 21 145Dean, Faculty of Psychiatry, College of Physicians and Surgeons, Pakistan
- 22 146Dean, Jinnah Postgraduate Medical Centre, Karachi, Pakistan
- 23 147Dean, Faculty of Medicine, Jinnah Sindh Medical University, Karachi, Pakistan
- 24 148Federal Neuropsychiatric Hospital, Department of Clinical Services, Benin-City, Nigeria
- 25 149Irrua Specialist Teaching Hospital, Department of Psychiatry, Edo State, Nigeria
- 26 150UC San Diego, California, USA
- 27 151University of British Columbia, Vancouver, Canada
- 28 152University of Calgary, Alberta Health Services, Calgary, Canada
- 29 153Okasha Institute of Psychiatry, Faculty of Medicine, Ain Shams University, Cairo, Egypt
- 30 154Oran 1 University, Department of Psychiatry-Addictology, Oran, Algeria
- 31 155Yonsei University College of Medicine, Department of Pediatrics, Seoul, South Korea
- 32 156Yonsei University Wonju College of Medicine, Department of Psychiatry, Wonju, South Korea
- 33 157University of Monastir, Faculty of Medicine of Monastir, Research Unit "Vulnerability to Mental Disorders" LR05ES10, Monastir, Tunisia
- 34 158University of Monastir, University Hospital of Monastir, Department of Psychiatry, Monastir, Tunisia
- 35 159Republican Scientific and Practical Center of Mental Health, Kazakhstan
- 36 160Gaza Community Mental Health Programme, Palestine
- 37 161Sheba Medical Center, Israel

39

40

41

1 Email addresses

Country or region	Name, Surname	Contact
Italy	Marco Solmi	marco.solmi83@gmail.com
United Kingdom	Trevor Thompson	T.Thompson@greenwich.ac.uk
Uruguay	Andrés Estradé	andres.estrade_vaz@kcl.ac.uk
Greece	Agorastos Agorastos	aagorast@auth.gr
Spain	Joaquim Radua	radua@clinic.cat
United Kingdom	Samuele Cortese	samuele.cortese@soton.ac.uk
Greece/ Sweden	Elena Dragioti	elena.dragioti@liu.se
Austria	Friedrich Leisch	Friedrich.Leisch@boku.ac.at
Belgium /Uganda	Davy Vancampfort	davy.vancampfort@kuleuven.be
Denmark	Lau Caspar Thygesen	lct@sdu.dk
Austria	Harald Aschauer	harald.aschauer@biopsysc.at
Austria	Monika Schloegelhofer	monika.schloegelhofer@biopsysc.at
Austria	Elena Aschauer	elena.aschauer@biopsysc.at
Switzerland	Andres Schneeberger	aschneeberger@health.ucsd.edu
Switzerland	Christian G. Huber	christian.huber@unibas.ch
Switzerland	Gregor Hasler	gregor.hasler@unifr.ch
Switzerland	Philippe Conus	philippe.conus@chuv.ch
Switzerland	Kim Q. Do Cuénod	Kim.Do@chuv.ch
Switzerland	Roland von Känel	roland.vonkaenel@usz.ch
Spain	Gonzalo Arrondo	garrondo@unav.es
Italy/ United Kingdom	Paolo Fusar-Poli	paolo.fusar-poli@unipv.it
France	Philip Gorwood	p.gorwood@ghu-paris.fr
France	Pierre-Michel Llorca	pmlorca@chu-clermontferrand.fr
France	Marie-Odile Krebs	MO.KREBS@ghu-paris.fr
France	Elisabetta Scanferla	e.scanferla@ghu-paris.fr
Japan	Taishiro Kishimoto	tkishimoto@keio.jp
Bangladesh	Golam Rabbani	rabbanigolam33@gmail.com
Poland	Karolina Skonieczna-Żydecka	karzyd@pum.edu.pl
Italy	Paolo Brambilla	paolo.brambilla1@unimi.it
Italy	Angela Favaro	angela.favaro@unipd.it
Japan	Akihiro Takamiya	akihiro.takamiya@keio.jp
Italy	Leonardo Zoccante	leonardo.zoccante@aovr.veneto.it
Italy	Marco Colizzi	marco.colizzi@uniud.it
France	Julie Bourgin	j.bourgin@gh-nord-essonne.fr
Poland	Karol Kamiński	fizklin@gmail.com
Iran	Maryam Moghadasin	mmoghadasin@yahoo.com
South Africa	Soraya Seedat	sseedat@sun.ac.za
Ireland	Evan Matthews	ematthews@wit.ie
Ireland	John Wells	jswells@wit.ie
Cyprus	Emilia Vassilopoulou	vassilopoulouemilia@gmail.com
Brazil	Ary Gadelha	aryararipe@gmail.com
Taiwan	Kuan-Pin Su	cobolsu@gmail.com
South Korea	Jun Soo Kwon	kwonjs@snu.ac.kr
South Korea	Minah Kim	verte82@snu.ac.kr
South Korea	Tae Young Lee	leetaey@gmail.com

Country or region	Name, Surname	Contact
Russia	Oleg Papsuev	oleg.papsouev@gmail.com
Czech Republic	Denisa Manková	denisa.mankova@nudz.cz
Italy	Andrea Boscutti	a.boscutti@gmail.com
Italy	Cristiano Gerunda	cristiano.gerunda@unipd.it
Italy	Diego Saccon	diego.sacson@aulss4.veneto.it
Italy	Elena Righi	elena.righi@unimore.it
Italy	Francesco Monaco	fmonaco1980@gmail.com
Italy	Giovanni Croatto	giovannicroatto8@gmail.com
Italy	Guido Cereda	guido.cereda@unimi.it
Italy	Jacopo Demurtas	eritrox7@gmail.com
Italy	Natascia Brondino	natascia.brondino@unipv.it
Italy	Nicola Veronese	nicola.veronese@unipa.it
Italy	Paolo Enrico	paolo.enrico@unimi.it
Italy	Pierluigi Politi	pierluigi.politi@unipv.it
Italy	Valentina Ciappolino	valentina.ciappolino@policlinico.mi.it
Germany	Andrea Pfennig	Andrea.Pfennig@uniklinikum-dresden.de
Germany	Andreas Bechdorf	andreas.bechdorf@charite.de
Germany	Andreas Meyer-Lindenberg	Andreas.Meyer-Lindenberg@zi-mannheim.de
Germany	Kai G. Kahl	kahl.kai@mh-hannover.de
Germany	Katharina Domschke	katharina.domschke@uniklinik-freiburg.de
Germany	Michael Bauer	Michael.Bauer@uniklinikum-dresden.de
Germany	Nikolaos Koutsouleris	Nikolaos.Koutsouleris@med.uni-muenchen.de
Germany	Sibylle Winter	sibylle.winter@charite.de
Germany	Stefan Borgwardt	s.borgwardt@unibas.ch; stefan.borgwardt@uksh.de
Hungary	Istvan Bitter	bitter.istvan@med.semmelweis-univ.hu
Hungary	Judit Balazs	balazs.judit@ppk.elte.hu
Hungary	Pal Czobor	czobor.pal@med.semmelweis-univ.hu
Hungary	Zsolt Unoka	unoka.zsolt@med.semmelweis-univ.hu
Greece	Dimitris Mavridis	dmavridi@uoi.gr
Greece	Konstantinos Tsamakis	ktsamakis@gmail.com
Greece	Vasilios P. Bozikas	mpozikas@auth.gr
Thailand	Chavit Tunvirachaisakul	chavit.T@chula.ac.th
Thailand	Michael Maes	dr.michaelmaes@hotmail.com
Thailand	Teerayuth Rungnirundorn	drteerayuth@gmail.com
Thailand	Thitiporn Supasitthumrong	thitiporn.s@chula.ac.th
Bangladesh	Ariful Haque	arifulhaque.ukzn@gmail.com
Brazil	Andre R. Brunoni	brunoni@usp.br
Brazil	Carlos Gustavo Costardi	gustavocostardi@hotmail.com
Brazil	Felipe Barreto Schuch	felipe.schuch@ufsm.br
Brazil	Guilherme Polanczyk	polanczyk.guilherme@gmail.com
Brazil	Jhoanne Merlyn Luiz	jhoanne_luiz@hotmail.com
Brazil	Lais Fonseca	laismfonseca@gmail.com
Brazil	Luana V. Aparicio	luanavma@hotmail.com
Brazil	Samira S. Valvassori	samiravalvassori@unescc.net
Denmark	Merete Nordentoft	mn@dadlnet.dk
Denmark	Per Vendsborg	pv@psykiatrifonden.dk

Country or region	Name, Surname	Contact
Denmark	Sofie Have Hoffmann	sohh@sdu.dk
Switzerland	Jihed Sehli	jihed.sehli@gmail.com
Switzerland	Norman Sartorius	sartorius@normansartorius.com
Switzerland	Sabina Heuss	sabina.heuss@fhnw.ch
United States	Daniel Guinart	DGuinart@northwell.edu
United States	Jane Hamilton	Jane.E.Hamilton@uth.tmc.edu
United States	John Kane	JKane2@northwell.edu
United States	Jose Rubio	JRubio13@northwell.edu
United States	Michael Sand	michael.sand@boehringer-ingelheim.com
Spain	Ai Koyanagi	a.koyanagi@pssjd.org
Spain	Aleix Solanes	al.solanes@gmail.com
Spain	Alvaro Andreu-Bernabeu	alvaro.andreu@salud.madrid.org
Spain	Antonia San José Cáceres	antonia.sanjose@iisgm.com
Spain	Celso Arango	carango@hggm.es
Spain	Covadonga M Díaz-Caneja	covadonga.martinez@iisgm.com
Spain	Diego Hidalgo-Mazzei	dahidalg@clinic.cat
Spain	Eduard Vieta	evieta@clinic.cat
Spain	Javier Gonzalez-Peñas	javipenhas@gmail.com
Spain	Lydia Fortea	lydiafor94@gmail.com
Spain	Mara Parellada	parelladahggm@gmail.com; parellada@hggm.es
Spain	Miquel A. Fullana	mafullana@clinic.cat
Spain	Norma Verdolini	norma.verdolini@gmail.com
Czech Republic	Eva Andrlíková	eva.andrlikova@nudz.cz
Czech Republic	Karolina Janků	karolina.janku@nudz.cz
France	Mark John Millan	mark.john.millan@gmail.com
France	Mihaela Honciuc	rmhonciuc@chu-clermontferrand.fr
Poland	Anna Moniuszko-Malinowska	annamoniuszko@op.pl
Poland	Igor Łoniewski	sanprobi@sanprobi.pl
Poland	Jerzy Samochowiec	samoj@pum.edu.pl
Poland	Lukasz Kiszkiel	lukaszkiziel@gmail.com
Poland	Maria Marlicz	mariamarlicz@gmail.com
Poland	Pawel Sowa	mailtosowa@gmail.com
Poland	Wojciech Marlicz	marlicz@hotmail.com
South Africa	Georgina Spies	ggioscos@sun.ac.za
United Kingdom	Brendon Stubbs	brendon.stubbs@kcl.ac.uk
United Kingdom	Joseph Firth	joseph.firth@manchester.ac.uk
United Kingdom	Sarah Sullivan	Sarah.Sullivan@bristol.ac.uk
Turkey	Asli Enez Darcin	aslienez@gmail.com
Turkey	Hatice Aksu	aksubhatice@yahoo.com
Turkey	Nesrin Dilbaz	nesrin.dilbaz@gmail.com
Turkey	Onur Noyan	conurnoyan@gmail.com
Japan	Momoko Kitazawa	m-kitazawa@keio.jp
Japan	Shunya Kurokawa	shunya5@keio.jp; shunyakurokawa@gmail.com
Japan	Yuki Tazawa	tazawa@a5.keio.jp
Uruguay	Alejandro Anselmi	alejandro.anselmi@ucu.edu.uy
Uruguay	Cecilia Cracco	ccracco@ucu.edu.uy

Country or region	Name, Surname	Contact
Uruguay	Ana Inés Machado	amachado@ucu.edu.uy
Uruguay	Natalia Estrade	natalia.estrade@ucu.edu.uy
Australia	Diego De Leo	D.DeLeo@griffith.edu.au
Australia	Jackie Curtis	j.curtis@unsw.edu.au
Australia	Michael Berk	michael.berk@deakin.edu.au
Australia	Philip Ward	p.ward@unsw.edu.au
Australia	Scott Teasdale	s.teasdale@unsw.edu.au
Australia	Simon Rosenbaum	s.rosenbaum@unsw.edu.au
Australia	Wolfgang Marx	wolf.marx@deakin.edu.au
Romania	Adrian Vasile Horodnic	adrian-vasile-horodnic@umfiasi.ro
Romania	Liviu Oprea	liviu.oprea@umfiasi.ro; liviu.oprea@gmail.com
Romania	Ovidiu Alexinschi	alexinschi@yahoo.com
Romania	Petru Ifteni	petru_ifteni@yahoo.com
Romania	Serban Turliuc	serban_turliuc@yahoo.com
Romania	Tudor Ciuhodaru	tudorciuhodaru@yahoo.co.uk
Romania	Alexandra Bolos	alex_andra_bolos@yahoo.com
Romania	Valentin Matei	valipmatei@yahoo.com
Netherlands	Dorien H. Nieman	d.h.nieman@amc.uva.nl
Netherlands	Iris Sommer	i.e.c.sommer@umcg.nl
Netherlands	Jim van Os	j.j.vanos-2@umcutrecht.nl
Netherlands	Therese van Amelsvoort	t.vanamelsvoort@maastrichtuniversity.nl
Taiwan	Ching-Fang Sun	chingfangsun@gmail.com
Taiwan	Ta-wei Guu	da20vid@gmail.com
China	Can Jiao	jiaocan@szu.edu.cn
China	Jieting Zhang	jenny121@126.com
China	Jialin Fan	FanJL@szu.edu.cn
China	Liye Zou	liyezou123@gmail.com
China	Xin Yu	yuxin@bjmu.edu.cn
China	Xinli Chi	xinlich@126.com
Belgium	Philippe de Timary	Philippe.detimary@uclouvain.be
Belgium	Ruud van Winkel	ruud.vanwinkel@kuleuven.be
Mexico	Bernardo Ng	bng@sunvalleyb.com
Mexico	Edilberto Pena	epena@cisne.mx
Mexico	Ramon Arellano	jramonarellanoc@hotmail.com
Mexico	Raquel Roman	raquelrr@hotmail.com
Mexico	Thelma Sanchez	marsan2@prodigy.net.mx
Russia	Larisa Movina	movina_larisa@bk.ru
Portugal	Pedro Morgado	pedromorgado@med.uminho.pt
Portugal	Sofia Brissos	brissos.sofia@gmail.com
Belarus	Oleg Aizberg	oleg.aizberg@gmail.com
Belarus/ Russia	Anna Mosina	annamosina.md@gmail.com
Belarus/ Russia	Damir Krinitski	damir.krinitski@gmail.com
Uganda	James Mugisha	Jmmugi77@hotmail.com
Iran	Dena Sadeghi-Bahmani	Bahmanid@stanford.edu
Iran	Farshad Sheybani	sheibanifr@mums.ac.ir
Iran	Masoud Sadeghi	sadeghi_mbrc@yahoo.com

Country or region	Name, Surname	Contact
Iran	Samira Hadi	hadi.samira@yahoo.com
Iran	Serge Brand	serge.brand@upk.ch
Chile	Antonia Errazuriz	anerrazuriz@uc.cl
Chile	Nicolas Crossley	ncrossley@uc.cl
Serbia	Dragana Ignjatovic Ristic	draganaristic4@gmail.com
Colombia	Carlos López-Jaramillo	carlos.lopez20@udea.edu.co; carloslopezjaramillo@gmail.com
Cyprus	Dimitris Efthymiou	dimitrisefthy@gmail.com
India	Praveenlal Kuttichira	drpraveenlalkuttichira@gmail.com
India	Roy Abraham Kallivayalil	roykalli@gmail.com
Pakistan	Afzal Javed	afzalj@gmail.com
Pakistan	Muhammad Iqbal Afridi	driqbalafridi@yahoo.com
Nigeria	Bawo James	bawojames@yahoo.com
Nigeria	Omonefe Joy Seb-Akahomen	sebakahomen@gmail.com
Canada	Jess Fiedorowicz	jfiedorowicz@toh.ca
Canada	Andre F. Carvalho	Andre.Carvalho@camh.ca
USA	Jeff Daskalakis	zdaskalakis@health.ucsd.edu
Canada	Lakshmi N Yatham	l.yatham@ubc.ca
Canada	Lin Yang	lin.yang@ahs.ca
Egypt	Tarek Okasha	tarek.okasha@gmail.com
Algeria	Aïcha Dahdouh	aichadahdouh@gmail.com
Sweden	Björn Gerdle	bjorn.gerdle@liu.se
Sweden	Jari Tiihonen	jari.tiihonen@ki.se
South Korea	Jae Il Shin	SHINJI@yuhs.ac
South Korea	Jinhee Lee	jinh.lee95@yonsei.ac.kr
Tunisia	Ahmed Mhalla	ahmed.mhalla@yahoo.fr
Tunisia	Lotfi Gaha	gaha.lotfi@yahoo.fr
Tunisia	Takoua Brahim	takoua.brahim@yahoo.com
Kazakhstan	Kuanysh Altynbekov	kuanysh_altyn@mail.ru
Kazakhstan	Nikolay Negay	nick_negaj@mail.ru
Kazakhstan	Saltanat Nurmagambetova	saya_n@yahoo.com
Palestine	Yasser Abu Jamei	yasser@gcmhp.net
Israel	Mark Weiser	mweiser@netvision.net.il
Germany/ United States	Christoph U. Correll	CCorrell@northwell.edu

1
2
3

1 **Abstract 249/250**

2 **Background.** The Collaborative Outcome study on Health and Functioning during Infection Times
3 (COH-FIT; www.coh-fit.com) is an anonymous and global online survey measuring health and
4 functioning during COVID-19 pandemic. The aim of this study was to test concurrently the validity of
5 COH-FIT items and the internal validity of the co-primary outcome, a composite psychopathology
6 “P-score”.

7 **Methods.** The COH-FIT survey has been translated into 30 languages (two blind forward-
8 translations, consensus, one independent English back-translation, final harmonization). To measure
9 mental health, 1-4 items (“COH-FIT items”) were extracted from validated questionnaires (e.g.
10 Patient Health Questionnaire 9). COH-FIT items measured anxiety, depressive, post-traumatic,
11 obsessive-compulsive, bipolar and psychotic symptoms, as well as stress, sleep and concentration.
12 COH-FIT Items which correlated $r \geq 0.5$ with validated companion questionnaires, were initially
13 retained. A P-score factor structure was then identified from these items using exploratory factor
14 analysis (EFA) and confirmatory factor analyses (CFA) on data split into training and validation sets.
15 Consistency of results across languages, gender and age was assessed.

16 **Results.** From >150,000 adult responses by May 6th, 2022, a subset of 22,456 completed both COH-
17 FIT items and validated questionnaires. Concurrent validity was consistently demonstrated across
18 different languages for COH-FIT items. CFA confirmed EFA results of five first-order factors
19 (anxiety, depression, post-traumatic, psychotic, psychophysiological symptoms) and revealed a single
20 second-order factor P-score, with high internal reliability ($\omega=0.95$). Factor structure was consistent
21 across age and sex.

22 **Conclusions.** COH-FIT is a valid instrument to globally measure mental health during infection
23 times. The P-score is a valid measure of multidimensional mental health.

24
25
26
27
28 **Keywords**

29 Covid-19; pandemic; COH-FIT; survey; P-factor; well-being; mental health; psychiatry; psychometric

1 **Introduction**

2 COVID-19 has infected over 530 million people and caused almost 6.3 million deaths up to June 1st,
3 2022, since its breakout, globally(Dong et al., 2020). The indirect impact of COVID-19 on mental
4 health of the general population(Dragioti et al., 2021) and of specific groups(Chen et al., 2022;
5 Dragioti et al., 2022; Leung et al., 2022; Zhang et al., 2022) of the population has been studied by
6 several anonymous surveys. Mental health surveys published in the early stage of the pandemic
7 recruited on average 5,137 respondents and a maximum of 56,679 respondents(Lin et al., 2021), in
8 adults. In children and adolescents(Theberath et al., 2022), surveys focused mainly on anxiety (28%)
9 and depression (23%), while loneliness (5%), stress (5%), fear (5%), tension (3%), anger (3%),
10 fatigue (3%), confusion (3%), and worry (3%) were assessed much less frequently. Most surveys
11 focused on a few outcomes. The largest meta-analysis on the prevalence of mental health outcomes
12 during the COVID-19 pandemic, which included 173 surveys and over 500,000 participants, showed
13 that the highest prevalence during the COVID-19 pandemic is for posttraumatic symptoms in
14 COVID-19-infected people (94%), but also that mental health can be broadly affected by the COVID-
15 19 pandemic. These outcomes included behavioral problems in those with prior mental disorders
16 (77%), fear in healthcare workers (71%), anxiety in caregivers/relatives of people infected with
17 COVID-19 (42%), general health/social contact/passive coping style in the general population (38%),
18 depression in those with prior somatic disorders (37%), and fear in other-than-healthcare workers
19 (29%)(Dragioti et al., 2021). Females seem to be particularly affected by the pandemic overall,
20 college students/young adults with respect to anxiety, depressive and sleep problems, and suicidal
21 ideation, and adults with regards to post-traumatic stress disorder(Dragioti et al., 2021).

22 Given the evidence of the multidimensional impact of the pandemic on mental health in the general
23 population, surveys ideally should assess a composite psychopathology domain: “p”, which covers
24 and incorporates these different aspects of mental health and functioning. Numerous studies have
25 shown that the many psychiatric symptoms and disorders ultimately cluster in three psychopathology
26 dimensions (namely, externalizing, internalizing, and psychotic experiences), which in turn load on a
27 single domain of psychopathology, “p”, paralleling the “g” factor for intelligence, and mapping on a
28 continuum from low to extreme psychopathology(Caspi et al., 2014; Caspi and Moffitt, 2018).

29 Importantly, externalizing behaviour is difficult to capture and measure with online surveys, while
30 valid self-report questionnaires exist for internalizing and psychotic symptoms. P is classically
31 conceived as a latent variable, putatively associated with an increased risk of developing mental
32 disorders(Caspi et al., 2014; Caspi and Moffitt, 2018). However, it has been proposed that P should
33 also be considered as a mental health outcome in clinical studies aiming to prevent or treat mental
34 disorders(Caspi and Moffitt, 2018). Accounting for the dual nature of P, as a latent vulnerability
35 factor and as an outcome, a questionnaire measuring composite psychopathology could inform on
36 both vulnerability for future development of mental disorders (P as a liability latent factor), and the

1 broad mental health status (P as an outcome). To assess P, measures of individual psychopathological
2 domains are needed. Most of the surveys conducted during the COVID-19 pandemic to date have
3 focused on one or two psychopathology domains, and have used full-length validated questionnaires,
4 that are composed of numerous items. This approach has limited the number of domains that could be
5 covered within a reasonable amount of time. For instance, among others, the Patient Health
6 Questionnaire 9 (PHQ-9)(Kroenke et al., 2001) was frequently used to measure depressive symptoms,
7 the Generalized Anxiety Disorder 7 (GAD-7)(Spitzer et al., 2006) to measure anxiety symptoms, and
8 the post-traumatic stress disorder (PTSD) Checklist for DSM-5 (PCL-5)(Blevins et al., 2015) to
9 measure post-traumatic symptoms. These questionnaires are nine, seven, and 20 items long,
10 respectively. Hence, in the context of an online survey, using validated questionnaires to assess P and
11 create a P-score would take too many items, likely decreasing completion rates of responses. An
12 alternative approach to creating a P-score is to use fewer items to measure multiple dimensions of
13 mental health at the same time, minimising time demands and avoiding fatigue of the participant.
14 It is also very important to keep in mind that online surveys are not limited by borders, and that they
15 have the potential of reaching people living in any country and speaking any language. However,
16 almost every online survey normally provides the option to answer in one or (rarely) two languages,
17 most frequently English, or Chinese. This limitation is of particular concern as it can introduce
18 selection bias since the pandemic is particularly affecting the most fragile strata of the population,
19 including ethnic and linguistic minorities who generally have lower socio-economic status and
20 education(Pan et al., 2020; Treweek et al., 2020), and who are frequently non-fluent in the official
21 national language of the country of residence(UK_Government, 2011). Hence, a multi-language
22 survey has the potential of being more inclusive, not leaving behind any linguistic minorities, and
23 collect evidence from as many countries globally as possible(Solmi et al., 2021).

24 However, the use of abbreviated scales to measure mental health requires evidence that the scale
25 validity is not adversely affected. Furthermore, merging item data from the same survey across
26 multiple language translations assumes that the psychometric properties are not compromised by their
27 presentation in a different language.

28 The Collaborative Outcome study on Health and Functioning during Infection Times (COH-FIT;
29 www.coh-fit.com) is an online survey measuring the impact of COVID-19 pandemic on health and
30 functioning of the general populations. COH-FIT is one of the largest international, multi-language
31 (n=30), cross-sectional, anonymous online surveys for adults, adolescents (14-17 years), and children
32 (6-13 years), measuring health and functioning during COVID-19 pandemic globally in a multi-wave
33 design, utilizing both non-probability and representative sampling, in collaboration with over 220
34 researchers from all around the globe(Solmi et al., 2022b, 2022c). Since April 26th, 2020 up to May
35 6th, 2022, COH-FIT has collected over 150,000 responses from adults and over 15,000 responses from
36 minors, in over 150 countries. The design of COH-FIT has been described and discussed in detail

1 previously(Solmi et al., 2022b, 2022c, 2022a). Briefly, COH-FIT assesses at the time of taking the
2 survey - and recalled for the last 2 weeks of regular life before the onset of the pandemic locally -
3 aspects of both physical health and mental health in order to measure the impact of the pandemic,
4 including its relationship to specific moderators and mediators of that impact. With regards to the
5 assessment of mental health, COH-FIT, uses selected items for each psychopathology domain that
6 were extracted from full-length validated questionnaires, which are then put together to build a
7 composite general psychopathology P-score. The COH-FIT P-score is composed by COH-FIT items
8 that are found to sufficiently represent that full validated scale result for anxiety, depressive, post-
9 traumatic, obsessive-compulsive, bipolar and psychotic symptoms, as well as psychophysiological
10 measures of stress, sleep, and concentration problems. The primary aim of this validation study was to
11 evaluate the psychometric properties of the COH-FIT P-score by (1) examining the concurrent
12 validity of each of the selected COH-FIT psychopathology items and domains, via examining
13 correlations of each item with the full-length validated questionnaire for the same constructs, and (2)
14 assessing the factor structure, internal reliability and measurement invariance across age groups and
15 sex of the composite P-score within a structural equation modelling framework. A secondary aim was
16 to measure validity of the translation process, to justify the pooling of COH-FIT results collected in
17 different languages.

18

19 **Methods**

20 *Dataset*

21 The dataset examined is that from all adult respondents to the COH-FIT survey collected from April
22 26th, 2020 to May 6th, 2022. Data collection of the full questionnaires after completion of the COH-
23 FIT survey was only conducted between April 26th, 2020 and May 24th, 2020, i.e., until a sufficient
24 number of participants answered these additional questions, in order to reduce the burden and time
25 requirement for the subsequent COH-FIT participants. The validated questionnaires were deliberately
26 placed at the end of the survey in order not to alter the survey's structure before them after removal of
27 these items due to completion of the validation effort. Validation scales were translated into several
28 languages with responses distributed as follows: Hungarian (25%), Italian (20%), Greek (15%),
29 Danish (8%), Thai (8%), English (4%), French (4%), German (4%), Spanish (4%), Japanese (2%),
30 Dutch (1%), Polish (1%), Portugal Portuguese (1%), Russian (1%), Turkish (1%), Romanian (<1%),
31 Traditional Chinese (<1%), Arabic (<1%), Brazilian Portuguese (<1%), Czech (<1%). In addition, the
32 entire WHO-5 questionnaire(Topp et al., 2015) (co-primary outcome with the P-score) was also
33 administered in Bangladeshi, Simplified Chinese, Farsi, Korean, Rumantsch Grischun, Serbian,
34 Swedish, Urdu and Xhosa.

35

36 *Data screening, languages and missing data*

1 Prior to the main analyses, initial data were screened through computation of minimum and maximum
2 values for each variable to identify out-of-range values. Furthermore, a visual inspection of
3 histograms was conducted to assess data distributions and identify obvious univariate outliers. In
4 addition, for participants who completed $\geq 80\%$ of the scale items, missing domain item data were
5 imputed using multivariate chained equations. Otherwise participant data for that domain were
6 excluded from further analysis. For COH-FIT domains with a low number of items (typically 1-2
7 items), domain scores were not imputed if missing.

8

9 *Representativeness of the validation sample*

10 To assess representativeness of the subsample that additionally completed the full-length validation
11 questionnaires, to the wider survey sample, we compared demographic characteristics based on the
12 following: sex, age, ethnicity, education and employment status. If any sizeable/material imbalance
13 emerged between the validation subsample and the whole data sample, validation cases were
14 weighted to achieve representativeness.

15

16 *COH-FIT items and concurrent validity*

17 Concurrent validity was assessed by computing Pearson's correlations for each of the candidate COH-
18 FIT domain scores with an established and validated full-length measure of the same construct as
19 follows: (1) COH-FIT anxiety domain score with GAD-7(Spitzer et al., 2006), (2) COH-FIT
20 depression, (3) sleep, and (4) concentration domain score with PHQ-9(Kroenke et al., 2001), (5)
21 COH-FIT post-traumatic symptoms domain score with (PCL-5)(Blevins et al., 2015), (6) COH-FIT
22 obsessive-compulsive symptoms domain score with the Brief Obsessive Compulsive Scale
23 (BOCS)(Bejerot et al., 2014), (7) COH-FIT bipolar disorder symptoms domain score with the Altman
24 Self-Rating Mania Scale (ASRM)(Altman et al., 1997), (8) COH-FIT stress domain score with the
25 WHO-5 wellbeing scale(Topp et al., 2015), and (9) COH-FIT psychotic symptoms domain score with
26 the Prodromal Questionnaire-16 (PQ-16)(Ising et al., 2012). We selected the WHO-5 as the validated
27 questionnaire to test concurrent validity of the COH-FIT stress domain score, given the large overlap
28 between the two concepts (i.e. stress as opposite of well-being)(Heitor Dos Santos et al., 2018), and in
29 light of the strong association between the WHO-5 and several stress signs and symptoms(Feicht et
30 al., 2013). Only COH-FIT domains with moderate correlations ≥ 0.50 with their respective validated
31 full-length questionnaires were considered as acceptable to be included as a component in the
32 composite P-score. Additionally, we calculated the correlations of each individual COH-FIT item
33 within the same domain (e.g. COH-FIT anxiety items 1 and 2) with its corresponding validation scale
34 (e.g. GAD-7 anxiety score) to identify any poorly performing individual COH-FIT items. Any items
35 with a correlation $< .20$ were not included in the scoring of that domain.

1 As the upper limit of a test-criterion correlation is dependent upon the reliability of the criterion, the
2 nature of the construct and the degree of similarity of constructs across test, and criterion
3 measures(Kline, 2000), we only automatically excluded COH-FIT domains or items from any
4 analysis where correlations were <0.2 , but where correlations were $0.2-0.5$ we considered the
5 centrality of that item to the main analysis before deciding whether or not to exclude. The scoring of
6 COH-FIT domains and each corresponding validation scale is provided in Supplementary Table 1.
7 To assess whether concurrent validity for each COH-FIT domain was still evident across different
8 language translations of the COH-FIT items, Pearson's correlations for every language with at least
9 100 valid responses were computed for all domains and plotted graphically for all COH-FIT domains
10 (Supplementary Table 2, supplementary Figure 2). If any correlations were notably lower for a
11 particular language within a domain, we will consider excluding data for this domain for the affected
12 translation in further projects using global and local data.

13

14 *P-score definition and internal validation*

15 One of the two COH-FIT co-primary outcomes is a composite psychopathology measure (P-score)
16 representing a multidimensional measure of symptoms of different psychopathologic domains (the
17 other COH-FIT co-primary outcome is a re-scaled WHO-5 questionnaire), with all COH-FIT items
18 and the WHO-5 being rated on a 0 -100 scale. Only COH-FIT domains with at least moderate
19 correlations of $r \geq .50$ with their respective validated full-length questionnaires were considered as
20 acceptable to be included as a component of the composite P-score.

21 The P-score assessment underwent an internal validation procedure. First, to identify an initial P-score
22 factor structure, we conducted exploratory factor analysis (EFA) on a testing set after randomly
23 dividing the data into approximately evenly split testing and validation subsamples. Factors were
24 extracted from an initial pool of all items belonging to a COH-FIT domain using ordinary least
25 squares EFA, with oblique rotation (oblimin) used, given our expectation of correlated factors. Horn's
26 parallel analysis(Horn, 1965) was performed to determine the number of factors to retain, based on
27 the number of ranked eigenvalues from the data that exceeded the upper 95th percentile of ranked
28 eigenvalues generated from factor analysis of 500 simulated uncorrelated datasets.(Glorfeld, 1995).
29 We used Horn's Parallel analysis, as it is a more objective method than the often used method of
30 visually identifying a "break-point". Parallel analysis determines the number of factors based on how
31 many produce Eigenvalues that lie outside of the 95% confidence intervals of those that would be
32 expected to arise purely by chance, and has been shown to more reliably estimate the 'true' number of
33 factors(Horn, 1965). A rotated item loading >0.45 was considered acceptable for the COH-FIT item,
34 indicating that an item belonged to a factor(Tabachnick and Fidell, 2013). Second, we performed
35 confirmatory factor analysis (CFA) on the validation set, assessing the fit of a hierarchical model
36 using the domain-specific factors identified by the EFA as well as of an additional general

1 psychopathologic (P) domain modelled as a second-order factor. This general second-order factor was
2 added to evaluate the legitimacy of computing a single composite P-score in further analyses. A
3 substantial loading of the P-domain onto all subfactors (minimum ≥ 0.45), and an adequate model fit
4 with a general pattern of coherent high factor loadings (minimum ≥ 0.45), would support the creation
5 of a composite P score. To demonstrate adequacy of model fit indices should be close to the
6 following standard cut-offs of comparative fit index (CFI) > 0.95 , root mean square error of
7 approximation (RMSEA) $< .06$, standardized root mean square residual (SRMR) $< .08$ (Hu and Bentler,
8 1999). We did not use the chi-square test to assess significance of model fit, as even trivial deviations
9 of a user-specified model from a fully saturated model tend to be significant when sample sizes are
10 large (here $n > 20,000$). Overall and individual internal domain reliabilities were estimated with
11 coefficient ω within the CFA framework as well as the traditional coefficient α , given that α can
12 sometimes misestimate true reliability (Raykov, 2001).

13

14 *P-score measurement invariance*

15 To assess equivalence of P-score measurement across males and females and age groups (18-39, 40-
16 64, 65+ yrs.), multiple-groups CFA was performed. Measurement invariance was tested in a
17 hierarchical manner, assessing adequacy of model fit with the following increasingly restrictive
18 equality constraints: (Horn and McArdle, 1992; Vandenberg and Lance, 2000) configural ('weak')
19 measurement invariance (equal model specifications for each subgroup) and metric ('strong')
20 invariance (equal factor loadings across groups). We also examined intercept invariance (equal
21 intercepts across groups). As limitations of the chi-square test in large samples are also applicable to
22 multi-group CFA, the CFI was used as the primary indicator of measurement invariance. Data
23 simulations have demonstrated that an absolute change in CFI < 0.002 ($\Delta CFI < 0.002$) indicates that
24 deviations from perfect group equivalence are practically trivial (Meade et al., 2008).

25 All analyses were conducted in R (R Foundation for Statistical Computing, Vienna, n.d.) using the
26 *MICE* (van Buuren and Groothuis-Oudshoorn, 2011), *ggplot2* (Wickham, 2016), *psych* (Revelle and
27 Revelle, 2015) and *lavaan* (Rosseel, 2012) packages.

28

29 **Results**

30 *Data screening*

31 Up to May 6th, 2022, $N = 153,876$ adults consented to participate in the survey. During the early
32 period of data collection, a smaller subsample was additionally asked to complete a set of full-length
33 validation questionnaires. After approximately 15% ($N = 22,456$) of the entire sample had provided
34 responses to the validation questionnaires, these were removed from COH-FIT to reduce participant
35 burden. A smaller subsample was available for the PQ-16 scale, which was added at a slightly later
36 stage of the validation process ($N = 16,518$). A larger sample was available for the WHO-5, as this

1 scale was also one of the two co-primary outcomes in the main survey (and therefore a complete
2 dataset was available) (Supplementary Table 1).
3 Only a very small percentage of missing item data were evident and imputed according to the
4 procedure described above, with the vast majority of participants (ranging from 98.0% of participants
5 for the SBQ to 99.9% for the ASRM) completing at least 80% of the total number of items for each
6 questionnaire. Completion rates >80% of all items was similarly high for all COH-FIT domains
7 (ranging from 97.1% for COH-FIT post-traumatic domain to 99.0% for COH-FIT anxiety domain).
8 Data screening found no out-of-range values. Histograms of full-length validation scales and COH-
9 FIT domains are shown in Supplementary Figure 1 and reveal some negative skew in several
10 validation items, as would be expected, given the non-clinical population. However, given the high
11 sample size and that the skew was generally in the same direction for a COH-FIT validation scale
12 domain, we did not attempt to normalise data, as the sampling distribution from which confidence
13 intervals are derived should exhibit normality, given the tenets of the central limit theorem(Lohr,
14 2010).

15 16 *Sample demographics and validation sample representativeness*

17 Demographic characteristics of both the entire survey sample and those who completed the validation
18 sample are provided in Table 1. To assess representativeness of the validation sample to the wider
19 survey population, demographic characteristics for each sample were reported, suggesting that the
20 validation subset provides a broadly representative sample of the survey population.

21 22 *Concurrent validity*

23 Across all COH-FIT items, only one item exhibited a correlation coefficient < 0.20, namely the
24 “mood swings” item from the COH-FIT bipolar disorder symptom domain ($r = 0.05$ with the ASRM).
25 This item was therefore not included in the scoring of the COH-FIT bipolar disorder symptom
26 domain.

27 Figure 1 and Supplementary Table 1 show the correlation between COH-FIT domains and relative
28 validation questionnaires. Overall, all but the COH-FIT bipolar disorder and OCD symptom domains
29 met our threshold of $r \geq 0.50$. As can be seen in Supplementary figure 2-3, the associations between
30 COH-FIT ratings and external scale scores were generally highly consistent across language
31 translations for each domain (see Supplementary Table 2 for detailed reporting of correlation
32 coefficients).

33 34 *P-score*

35 As the OCD and bipolar disorder symptom COH-FIT domains did not meet our criteria for acceptable
36 concurrent validity, these were not considered as candidate P-Score domains and therefore excluded

1 from exploratory factor analysis (EFA). Complete data across remaining domains was available for N
2 = 103,529, and this data set was randomly divided into a testing (N =51,629) and validation
3 (N=51,900) subsets.

4 Horn's parallel analysis(Horn, 1965) for the remaining COH-FIT domains (anxiety, depression,
5 PTSD, psychosis, sleep, focus and stress) was conducted, on the testing subset, with results showing
6 that five first-order factors were retained (Supplementary Figure 4). COH-FIT item descriptions text,
7 details on how to compute the COH-FIT P-score, and results of the EFA with five extracted factors
8 are presented in the pattern matrix in Table 2 and show all item-factor loadings >0.45 with no
9 complex loadings. Correlations between factors were largely moderate (mean $r = 0.58$, range = 0.27
10 to .77), and factor structure was largely consistent with the individual COH-FIT domains, with sleep,
11 focus and stress loading together on a distinct "psychophysiological" factor.

12 CFA on the validation set using a model, which included the 5 factors identified by EFA along with a
13 single general factor, suggested a good model fit, with all fit indices satisfying the predefined
14 thresholds, i.e., $CFI = 0.98$, $RMSEA = 0.053$, $SRMR = 0.028$. High indicator-factor loadings for
15 domain-specific factors (0.66 to 0.94) were also observed, with high loadings of the P-score factor
16 onto the five domain-specific factors (Figure 2), consistent with the existence of a general common
17 factor and supporting the aggregation of all domain scores to a general P-score. Unstandardized
18 loadings, standard errors and p-values for the CFA are presented in Supplementary Table 3.

19 Overall and individual internal scale reliabilities, estimated through ω and α coefficients, are shown in
20 Supplementary Table 5 and suggest good reliability for the five domain-specific factors and excellent
21 reliability for the composite P-score factor, with values above 0.70-0.80 (most commonly used as
22 thresholds for good reliability)(Lance et al., 2006).

23

24 *P-score measurement invariance*

25 Adequate model fit of the general factor model continued to be demonstrated when CFA was
26 conducted separately in male ($CFI = 0.97$, $RMSEA = 0.067$, $SRMR = 0.045$) and female ($CFI = 0.97$,
27 $RMSEA = 0.061$, $SRMR = 0.044$) subsamples, as well as across age groups of 18-39 years ($CFI =$
28 0.96 , $RMSEA = 0.067$, $SRMR = 0.051$), 40-64 years ($CFI = 0.97$, $RMSEA = 0.065$, $SRMR = 0.046$)
29 and 65+ years ($CFI = 0.98$, $RMSEA = 0.056$, $SRMR = 0.040$).

30 Factor loadings for each of these subgroups are shown in Supplementary Table 4 and appear to be
31 generally closely equivalent across groups.

32 Measurement invariance tests results are shown in Supplementary Table 5. All ΔCFI s < 0.002 for sex
33 suggest little appreciable degradation in model fit with each increasingly restrictive constraint. For
34 age, some degradation in model fit was shown for factor loading invariance ($CFI < 0.002$), and
35 intercept invariance ($CFI = 0.004$). Nevertheless, absolute model fit indices retained acceptable fit for
36 all invariance models for both age and sex groups.

1
2
3
4
5
6
7
8
9
10
11
12
13
14
15
16
17
18
19
20
21
22
23
24
25
26
27
28
29
30
31
32
33
34
35
36

Discussion

Results of this validation study show that the selected individual COH-FIT items are valid, providing reliable estimates of individual mental health domains assessed with lengthier validated scales. The selected and implemented COH-FIT items that survive the stricter validity threshold compose a P-score that is internally valid, representing one second order factor (P-score), and five first order factors (anxiety, depression, and post-traumatic, psychotic, and psychophysiologic symptoms). The translation process of the COH-FIT study proved to be solid, and responses recorded in different COH-FIT study languages can be reliably put together within or across countries. Several reasons might explain why the bipolar and obsessive-compulsive disorder symptom domains did not meet our validity threshold. Regarding bipolar symptoms, manic symptoms have a low prevalence even in patients with bipolar disorder. For instance, over a follow-up of 11 years, only 4% and 0.4% of subjects with bipolar disorder type I and II, respectively, showed clinically relevant manic symptoms(Fiedorowicz et al., 2009). Hence, these symptoms might be too infrequent to be captured. Moreover, ASRM’s specificity is not high with regards to mild manic or hypomanic symptoms, which are expected to be more frequent in the general population(Fiedorowicz et al., 2019). We chose ASRM as there is currently no comparison of psychometric performances of questionnaires to assess manic symptoms in the general population (i.e. no gold standard). Regarding obsessive-compulsive symptoms, the COVID-19 pandemic has certainly elevated the intensity and frequency of thoughts about and, even, preoccupations with contamination, infection, cleanness, and related behaviours to prevent and avoid COVID-19 infection. Such thoughts and behaviours, which are functional, adaptive, and physiologic during infection times, might have altered the psychometric properties of the full-length validated questionnaire, as well as of the corresponding abbreviated OCD COH-FIT item domain. A systematic review focusing on OCD during the COVID-19 pandemic reported a discrepancy in frequency of OCD between in-person versus online studies, with the latter reporting higher rates of OCD, possibly indicating poorer psychometric performance of established tools to screen for OCD during the COVID-19 pandemic and/or using questionnaires(Guzick et al., 2021). Moreover, a more recent scoping review described that obsessive-compulsive symptoms in the general population were associated with trait compulsivity and pandemic-related-stress(Grant et al., 2022), which can confound symptom assessment and impact the validity of the COH-FIT domain extracted from the entire BOCS. Whether the lack of validity of OCD self-ratings affects the full validated questionnaire during time of a pandemic goes beyond the scope of this work, which mainly aims to validate COH-FIT questionnaire and not to test validity of full-length established valid questionnaires for which clinical interviews to diagnose manifest OCD would be needed. Results are methodologically relevant, as they show that few specific items can be extracted from validated questionnaires for many relevant psychopathology domains and still reliably measure the

1 whole domain that the complete questionnaire is measuring. The complete PHQ-9 is certainly
2 superior in providing a more detailed and specific symptomatic profile compared with two COH-FIT
3 items. Few items provide a less granular insight of individual symptoms of depressed mood, for
4 instance. However, the PHQ-9 still cannot provide measures of syndromal DSM-5 defined disorders,
5 still being a self-report measure. Thus, unless each of the nine symptoms assessed with PHQ-9 needs
6 to be assessed to test a specific hypothesis, fewer items might be a good trade-off between minimum
7 required validity and broadness of an overall mental health assessment performed in future surveys.
8 Furthermore, results of this study clearly show that multi-language translations of online surveys,
9 scaling them up from local to global surveys is feasible and valid. Beyond broadening the target
10 population internationally, having a multi-language survey within a given country is also of value for
11 inclusivity and representativeness. Selection bias invariably affects online surveys, for instance just
12 because of their online nature (not everybody has access/is familiar with internet), and in particular if
13 convenience sampling is adopted. Selection bias can be counterbalanced by also collecting nationally
14 representative samples via polling agencies, but still, if the survey is available in one language only,
15 those not fluent in the country's main language will be left behind, will not answer, or will provide
16 unreliable responses.

17 In this study, we applied the gold-standard psychometric procedure for internal and external
18 validation of a questionnaire, namely exploratory factor analysis, and confirmatory factor analysis,
19 measured internal consistency, and tested concurrent/external validation with validated
20 questionnaires. Similar methodologically strict approaches have been used in some but not all (online)
21 surveys conducted during COVID-19. However, most of these scales focused on only one
22 psychopathological domain, or specifically focused particularly on COVID-19, making these
23 questionnaires very specific for the current pandemic setting, but less applicable to future public
24 health crises or infection times. Examples of such new scales developed during the COVID-19
25 pandemic are the "fear of COVID-19 scale"(Martínez-Lorca et al., 2020), the "COVID-19 anxiety
26 scale"(Chandu et al., 2020), the "Coronavirus Anxiety Scale"(Lee et al., 2020), COVID-19 Public
27 Stigma Scale(Nochaiwong et al., 2021), COVID-19 Exposure and Family Impact Scale(Kazak et al.,
28 2021), COVID-19 Protective Motivation Scale(Cornejo et al., 2021), and a questionnaire on fear of
29 COVID-19 vaccination in the general population(Kumari et al., 2021), to mention a few. Among
30 these aforementioned and many more examples of COVID-19 focused questionnaires that underwent
31 psychometric validation, one stands out as broader and measuring multiple mental health domains,
32 namely the COVID-19 Pandemic Mental Health Questionnaire (CoPaQ)(Rek et al., 2021). CoPaQ
33 measures COVID-19-specific stressor impact, mental health impact, positive coping, institutional and
34 political trust, and conspiracy beliefs, actually going beyond mental health. However, important
35 differences exist between CoPaQ and COH-FIT. First, within the mental health domain, CoPaQ
36 considered PTSD symptoms, sleep disturbance (both part of the broader COH-FIT P-score), and also

1 substance abuse. COH-FIT deliberately avoided measures of externalizing behaviour in the P-score,
2 a-priori assuming that to properly assess such a domain, in-person assessment and collateral
3 information would be crucial. Results of the methodologically sound CoPaQ validation analyses show
4 that substance abuse poorly correlated with mental health-validated questionnaires (correlation
5 coefficients all below 0.3), confirming that including externalizing symptom- or behavior-related
6 proxy measures in online surveys can be problematic. These results are not surprising, given the
7 evidence of low reliability of questionnaires for the measurement of externalizing behaviors(Dirks
8 and Boyle, 2010). Second, authors did not extract CoPaQ items from validated questionnaires, but
9 created COVID-19-specific questions. Notwithstanding the high specificity and value of CoPaQ
10 during COVID-19, such a methodological approach resulted in overall low correlations of CoPaQ
11 mental health domains with validated questionnaires (all correlation coefficient below 0.5), limiting
12 the applicability of CoPaQ outside of the COVID-19 pandemic.

13 Results of this present study need to be interpreted within its strengths and limitations. Strengths
14 include that our approach at least mitigated some of the most frequent biases of online surveys(Lin et
15 al., 2021), and subjective reported experiences(Bull et al., 2019), including selection bias (by
16 including representative samples, and by comparing characteristics of validated questionnaire
17 completers versus non completers showing no material demographic differences), short data
18 collection duration (continuous data collection-currently over two years), small sample size (including
19 >150,000 adult study participants as of May 2022, including 22,456 adults who also completed the
20 validated questionnaires), and by testing and verifying internal and concurrent validity of the selected
21 items and questionnaires (across languages). A limitation is that, for the P-score, we only considered
22 internalizing symptoms and thought disorder, but did not include externalizing symptoms or
23 behaviors. As stated above, this decision was deliberate (see design papers)(Solmi et al., 2022c,
24 2022b), and accounts for poor validity of measures of externalizing behaviors in the context of
25 surveys(Dirks and Boyle, 2010). Additional limitations are inherent to its cross-sectional design.
26 However, participants were at least asked to retrospectively recall key assessed outcomes at the time
27 just before the pandemic started, in order to compare outcomes before and during the pandemic.
28 While this methodology is vulnerable to recall bias, we at least mitigated against the big risk of large
29 attrition in prospective cohort studies. Another limitation for the comparability with other work is that
30 the P-score that we validated in this study parallels the P-factor construct, yet there are some
31 differences. First, the P-factor encompasses externalizing symptoms, P-score does not. As mentioned
32 above, this decision was deliberate. Beyond limited external validity of surveys measures of
33 externalizing behaviours, the current pandemic introduces a global quasi-experimental scenario, with
34 a large drop in several externalizing behaviours, including crime(Ejrnæs and Scherg, 2022; Nivette et
35 al., 2021), and heterogeneous changes of substance (ab)use, and related intoxications, which vary
36 across settings with different lockdown policies. For instance, in the US, where milder lockdown

1 restrictions were implemented, intoxication and overdose emergency presentations
2 increased(Chandran et al., 2021), while in other settings with stricter lockdown policies substance use
3 did not increase, or decreased(Armstrong et al., 2022; Mason et al., 2022). Hence, while COH-FIT did
4 collect data on substance use and/or domestic violence, we opted not to consider those outcomes as
5 part of the P-score, which is why we did not validate related COH-FIT items. Secondly, COH-FIT
6 models the P-score as an outcome, with a specific quantifiable score, psychometric properties,
7 conceiving it as a measure of mental health, rather than only as a vulnerability factor measuring
8 additional risk of developing or worsening mental disorders(Caspi and Moffitt, 2018). We
9 acknowledge that, to test the P-score as a transdiagnostic vulnerability factor for different mental
10 disorders, future studies will be needed, which should account for structured a-priori
11 transdiagnosticity assessment frameworks(Fusar-Poli et al., 2019), and appropriate prognostic or
12 prediction study designs. Such studies should be cohort studies measuring the P-score at baseline and
13 following-up in participants over time, measure prognostic accuracy, discrimination performance,
14 each in development, internal, and external validation samples(Meehan et al., 2022; Salazar de Pablo
15 et al., 2021).

16 Despite these limitations, in COH-FIT we were able to develop and validate across multiple
17 languages and in a reasonably large sample a P-score consisting of multiple clinically relevant
18 internalizing symptom domains that can be useful for research during the current COVID pandemic
19 and other crisis situations affecting mental well-being and functioning.

20 In conclusion, COH-FIT is a valid tool to measure clinically relevant domains of mental health during
21 infections times, which is available in 30 languages and provides a measure of overall mental health
22 via a composite P-score. These results are relevant for the use of the P-score in forthcoming analyses
23 and publications from the COH-FIT study but also for other questionnaire studies in the future.
24 Whether the P-score reflects current psychopathology, or also increased vulnerability for mental
25 disorders, or both, needs to be clarified in additional longitudinal studies.

26
27

1 **Author disclosures**

2 ***Funding Statement***

3 All the institutions and funding agencies are listed in supplementary Table 6. COH-FIT PIs and
4 collaborators have applied/are actively applying for several national and international grants to
5 cover expenses related to the coordination of the study, website, nationally representative samples,
6 advertisement of the study, and future dissemination of study findings.

7 ***Conflict of Interest Statement***

8 Conflict of interest statements of all authors are detailed in Supplementary table 7.

9 ***Author Contributions Statement***

10 TT wrote the statistical analysis plan designed the statistical analysis plan and conducted the analysis
11 of this work. CUC, MS, TT wrote the first draft. All authors read, contributed to and approved the final
12 version of the manuscript. For the overall COH-FIT project, MS, CUC wrote the study protocol. MS,
13 CUC, TT, SC, FL, QR, AI, ED CUC, MS, AA, AE, DV conducted a preliminary review of the available
14 publications and ongoing registered studies. All authors contributed to the final version of the COH-
15 FIT survey and are involved in disseminating the COH-FIT survey link and collecting the data and
16 designing and preparing research reports on national data. All local researchers contributed to and
17 approved translations of the COH-FIT survey in their respective language. CUC, MS, AE, ED, TT, FL, AK
18 had access to the global raw data on participation results.

19 ***Acknowledgements***

20 All authors thank all respondents who took the survey so far, funding agencies and all professional
21 and scientific national and international associations supporting or endorsing the COH-FIT project.

22

23

24

25

1 **References**

- 2 Altman, E.G., Hedeker, D., Peterson, J.L., Davis, J.M., 1997. The Altman Self-Rating Mania Scale.
- 3 Armstrong, M.J., Cantor, N., Smith, B.T., Jesseman, R., Hobin, E., Myran, D.T., 2022. Interrupted
4 time series analysis of Canadian legal cannabis sales during the COVID-19 pandemic. *Drug*
5 *Alcohol Rev.* 10.1111/dar.13465. <https://doi.org/10.1111/dar.13465>
- 6 Bejerot, S., Edman, G., Anckarsäter, H., Berglund, G., Gillberg, C., Hofvander, B., Humble, M.B.,
7 Mörtberg, E., Rastam, M., Stahlberg, O., Frisé, L., 2014. The Brief Obsessive-Compulsive
8 Scale (BOCS): A self-report scale for OCD and obsessive-compulsive related disorders. *Nord. J.*
9 *Psychiatry* 68, 549–559. <https://doi.org/10.3109/08039488.2014.884631>
- 10 Blevins, C.A., Weathers, F.W., Davis, M.T., Witte, T.K., Domino, J.L., 2015. The Posttraumatic
11 Stress Disorder Checklist for DSM-5 (PCL-5): Development and Initial Psychometric
12 Evaluation. *J. Trauma. Stress* 28, 489–498. <https://doi.org/10.1002/jts.22059>
- 13 Bull, C., Byrnes, J., Hettiarachchi, R., Downes, M., 2019. A systematic review of the validity and
14 reliability of patient-reported experience measures. *Health Serv. Res.* 54, 1023–1035.
15 <https://doi.org/10.1111/1475-6773.13187>
- 16 Caspi, A., Houts, R.M., Belsky, D.W., Goldman-Mellor, S.J., Harrington, H., Israel, S., Meier, M.H.,
17 Ramrakha, S., Shalev, I., Poulton, R., Moffitt, T.E., 2014. The p Factor: One General
18 Psychopathology Factor in the Structure of Psychiatric Disorders? *Clin. Psychol. Sci. a J.*
19 *Assoc. Psychol. Sci.* 2, 119–137. <https://doi.org/10.1177/2167702613497473>
- 20 Caspi, A., Moffitt, T.E., 2018. All for One and One for All: Mental Disorders in One Dimension. *Am.*
21 *J. Psychiatry* 175, 831–844. <https://doi.org/10.1176/appi.ajp.2018.17121383>
- 22 Chandran, K., Mazer-Amirshahi, M., Shankar, N., Desale, S., Nelson, L., Mete, M., 2021. Impact of
23 COVID-19 pandemic on emergency department substance use screens and overdose
24 presentations. *Am. J. Emerg. Med.* 50, 472–476. <https://doi.org/10.1016/j.ajem.2021.08.058>
- 25 Chandu, V.C., Pachava, S., Vadapalli, V., Marella, Y., 2020. Development and Initial Validation of
26 the COVID-19 Anxiety Scale. *Indian J. Public Health* 64, S201–S204.
27 https://doi.org/10.4103/IJPH.IJPH_492_20
- 28 Chen, J., Zhang, S.X., Yin, A., Yáñez, J.A., 2022. Mental health symptoms during the COVID-19
29 pandemic in developing countries: A systematic review and meta-analysis. *J. Glob. Health* 12,
30 5011. <https://doi.org/10.7189/jogh.12.05011>
- 31 Cornejo, B., Vela, B., Vilca, L.W., Vallejos, M., Huancahuire-Vega, S., 2021. Psychometric
32 Properties of the COVID-19 Protective Motivation Scale in Peruvians During the Health
33 Emergency. *J. Prim. Care Community Health* 12, 21501327211051936–21501327211051936.
34 <https://doi.org/10.1177/21501327211051935>
- 35 Dirks, M.A., Boyle, M.H., 2010. The comparability of mother-report structured interviews and
36 checklists for the quantification of youth externalizing symptoms. *J. Child Psychol. Psychiatry*

1 51, 1040–1049. <https://doi.org/https://doi.org/10.1111/j.1469-7610.2010.02244.x>

2 Dong, E., Du, H., Gardner, L., 2020. An interactive web-based dashboard to track COVID-19 in real
3 time. *Lancet Infect. Dis.* [https://doi.org/10.1016/S1473-3099\(20\)30120-1](https://doi.org/10.1016/S1473-3099(20)30120-1)

4 Dragioti, E., Li, H., Tsitsas, G., Lee, K.H., Choi, J., Kim, J., Choi, Y.J., Tsamakidis, K., Estradé, A.,
5 Agorastos, A., Vancampfort, D., Tsiptsios, D., Thompson, T., Mosina, A., Vakadaris, G., Fusar-
6 Poli, P., Carvalho, A.F., Correll, C.U., Han, Y.J., Park, S., Il Shin, J., Solmi, M., 2021. A large-
7 scale meta-analytic atlas of mental health problems prevalence during the COVID-19 early
8 pandemic. *J. Med. Virol.* n/a. <https://doi.org/https://doi.org/10.1002/jmv.27549>

9 Dragioti, E., Tsartsalis, D., Mentis, M., Mantzoukas, S., Gouva, M., 2022. Impact of the COVID-19
10 pandemic on the mental health of hospital staff: An umbrella review of 44 meta-analyses. *Int. J.*
11 *Nurs. Stud.* 131, 104272. <https://doi.org/10.1016/j.ijnurstu.2022.104272>

12 Ejrnaes, A., Scherg, R.H., 2022. Nightlife activity and crime: The impact of COVID-19 related
13 nightlife restrictions on violent crime. *J. Crim. Justice* 79, 101884.
14 <https://doi.org/10.1016/j.jcrimjus.2022.101884>

15 Feicht, T., Wittmann, M., Jose, G., Mock, A., von Hirschhausen, E., Esch, T., 2013. Evaluation of a
16 seven-week web-based happiness training to improve psychological well-being, reduce stress,
17 and enhance mindfulness and flourishing: a randomized controlled occupational health study.
18 *Evid. Based. Complement. Alternat. Med.* 2013, 676953. <https://doi.org/10.1155/2013/676953>

19 Fiedorowicz, J.G., Persons, J.E., Assari, S., Ostacher, M.J., Zandi, P., Wang, P.W., Thase, M.E., Frye,
20 M.A., Coryell, W., 2019. Depressive symptoms carry an increased risk for suicidal ideation and
21 behavior in bipolar disorder without any additional contribution of mixed symptoms. *J. Affect.*
22 *Disord.* 246, 775–782. <https://doi.org/https://doi.org/10.1016/j.jad.2018.12.057>

23 Fiedorowicz, J.G., Solomon, D.A., Endicott, J., Leon, A.C., Li, C., Rice, J.P., Coryell, W.H., 2009.
24 Manic/hypomanic symptom burden and cardiovascular mortality in bipolar disorder.
25 *Psychosom. Med.* 71, 598–606. <https://doi.org/10.1097/PSY.0b013e3181acee26>

26 Fusar-Poli, P., Solmi, M., Brondino, N., Davies, C., Chae, C., Politi, P., Borgwardt, S., Lawrie, S.M.,
27 Parnas, J., McGuire, P., 2019. Transdiagnostic psychiatry: a systematic review. *World*
28 *Psychiatry* 18, 192–207. <https://doi.org/10.1002/wps.20631>

29 Glorfeld, L.W., 1995. An Improvement on Horn's Parallel Analysis Methodology for Selecting the
30 Correct Number of Factors to Retain. *Educ. Psychol. Meas.* 55, 377–393.
31 <https://doi.org/10.1177/0013164495055003002>

32 Grant, J.E., Drummond, L., Nicholson, T.R., Fagan, H., Baldwin, D.S., Fineberg, N.A., Chamberlain,
33 S.R., 2022. Obsessive-compulsive symptoms and the Covid-19 pandemic: A rapid scoping
34 review. *Neurosci. Biobehav. Rev.* 132, 1086–1098.
35 <https://doi.org/10.1016/j.neubiorev.2021.10.039>

36 Guzick, A.G., Candelari, A., Wiese, A.D., Schneider, S.C., Goodman, W.K., Storch, E.A., 2021.

1 Obsessive-Compulsive Disorder During the COVID-19 Pandemic: a Systematic Review. *Curr.*
2 *Psychiatry Rep.* 23, 71. <https://doi.org/10.1007/s11920-021-01284-2>

3 Heitor Dos Santos, M.J., Moreira, S., Carreiras, J., Cooper, C., Smeed, M., Reis, M. de F., Pereira
4 Miguel, J., 2018. Portuguese version of a stress and well-being evaluation tool (ASSET) at the
5 workplace: validation of the psychometric properties. *BMJ Open* 8, e018401–e018401.
6 <https://doi.org/10.1136/bmjopen-2017-018401>

7 Horn, J.L., 1965. A rationale and test for the number of factors in factor analysis. *Psychometrika* 30,
8 179–185. <https://doi.org/10.1007/BF02289447>

9 Horn, J.L., McArdle, J.J., 1992. A practical and theoretical guide to measurement invariance in aging
10 research. *Exp. Aging Res.* 18, 117–144. <https://doi.org/10.1080/03610739208253916>

11 Hu, L., Bentler, P.M., 1999. Cutoff criteria for fit indexes in covariance structure analysis:
12 Conventional criteria versus new alternatives. *Struct. Equ. Model. A Multidiscip. J.* 6, 1–55.
13 <https://doi.org/10.1080/10705519909540118>

14 Ising, H.K., Veling, W., Loewy, R.L., Rietveld, M.W., Rietdijk, J., Dragt, S., Klaassen, R.M.C.,
15 Nieman, D.H., Wunderink, L., Linszen, D.H., van der Gaag, M., 2012. The validity of the 16-
16 item version of the Prodromal Questionnaire (PQ-16) to screen for ultra high risk of developing
17 psychosis in the general help-seeking population. *Schizophr. Bull.* 38, 1288–1296.
18 <https://doi.org/10.1093/schbul/sbs068>

19 Kazak, A.E., Alderfer, M., Enlow, P.T., Lewis, A.M., Vega, G., Barakat, L., Kassam-Adams, N., Pai,
20 A., Canter, K.S., Hildenbrand, A.K., McDonnell, G.A., Price, J., Schultz, C., Sood, E., Phan, T.-
21 L., 2021. COVID-19 Exposure and Family Impact Scales: Factor Structure and Initial
22 Psychometrics. *J. Pediatr. Psychol.* 46, 504–513. <https://doi.org/10.1093/jpepsy/jsab026>

23 Kline, P., 2000. *Handbook of Psychological testing*, 2nd ed.

24 Kroenke, K., Spitzer, R.L., Williams, J.B.W., 2001. The PHQ-9: Validity of a brief depression
25 severity measure. *J. Gen. Intern. Med.* 16, 606–613. <https://doi.org/10.1046/j.1525-1497.2001.016009606.x>

26

27 Kumari, A., Ranjan, P., Chopra, S., Kaur, D., Upadhyay, A.D., Kaur, T., Bhattacharyya, A., Arora,
28 M., Gupta, H., Thrinath, A., Prakash, B., Vikram, N.K., 2021. Development and validation of a
29 questionnaire to assess knowledge, attitude, practices, and concerns regarding COVID-19
30 vaccination among the general population. *Diabetes Metab. Syndr.* 15, 919–925.
31 <https://doi.org/10.1016/j.dsx.2021.04.004>

32 Lance, C.E., Butts, M.M., Michels, L.C., 2006. The Sources of Four Commonly Reported Cutoff
33 Criteria: What Did They Really Say? *Organ. Res. Methods* 9, 202–220.
34 <https://doi.org/10.1177/1094428105284919>

35 Lee, S.A., Mathis, A.A., Jobe, M.C., Pappalardo, E.A., 2020. Clinically significant fear and anxiety of
36 COVID-19: A psychometric examination of the Coronavirus Anxiety Scale. *Psychiatry Res.*

1 290, 113112. <https://doi.org/10.1016/j.psychres.2020.113112>

2 Leung, C.M.C., Ho, M.K., Bharwani, A.A., Cogo-Moreira, H., Wang, Y., Chow, M.S.C., Fan, X.,
3 Galea, S., Leung, G.M., Ni, M.Y., 2022. Mental disorders following COVID-19 and other
4 epidemics: a systematic review and meta-analysis. *Transl. Psychiatry* 12, 205.
5 <https://doi.org/10.1038/s41398-022-01946-6>

6 Lin, Y.H., Chen, C.Y., Wu, S.I., 2021. Efficiency and quality of data collection among public mental
7 health surveys conducted during the COVID-19 pandemic: Systematic review. *J. Med. Internet*
8 *Res.* <https://doi.org/10.2196/25118>

9 Lohr, S., 2010. *Sampling: Design and Analysis*.

10 Martínez-Lorca, M., Martínez-Lorca, A., Criado-Álvarez, J.J., Armesilla, M.D.C., Latorre, J.M.,
11 2020. The fear of COVID-19 scale: Validation in spanish university students. *Psychiatry Res.*
12 293, 113350. <https://doi.org/10.1016/j.psychres.2020.113350>

13 Mason, R., Roberts, A., Spaight, R., Shaw, D., Whitley, G.A., Hogue, T.E., Siriwardena, A.N.,
14 Rogers, J., Law, G.R., 2022. Ambulance attendance for substance and/or alcohol use in a
15 pandemic: Interrupted time series analysis of incidents. *Drug Alcohol Rev.* 41, 932–940.
16 <https://doi.org/10.1111/dar.13453>

17 Meade, A.W., Johnson, E.C., Braddy, P.W., 2008. Power and Sensitivity of Alternative Fit Indices in
18 Tests of Measurement Invariance. *J. Appl. Psychol.* 93, 568–592. [https://doi.org/10.1037/0021-](https://doi.org/10.1037/0021-9010.93.3.568)
19 [9010.93.3.568](https://doi.org/10.1037/0021-9010.93.3.568)

20 Meehan, A.J., Lewis, S.J., Fazel, S., Fusar-Poli, P., Steyerberg, E.W., Stahl, D., Danese, A., 2022.
21 Clinical prediction models in psychiatry: a systematic review of two decades of progress and
22 challenges. *Mol. Psychiatry* 27, 2700–2708. <https://doi.org/10.1038/s41380-022-01528-4>

23 Nivette, A.E., Zahnow, R., Aguilar, R., Ahven, A., Amram, S., Ariel, B., Burbano, M.J.A., Astolfi,
24 R., Baier, D., Bark, H.-M., Beijers, J.E.H., Bergman, M., Breetzke, G., Concha-Eastman, I.A.,
25 Curtis-Ham, S., Davenport, R., Díaz, C., Fleitas, D., Gerell, M., Jang, K.-H., Kääriäinen, J.,
26 Lappi-Seppälä, T., Lim, W.-S., Revilla, R.L., Mazerolle, L., Meško, G., Pereda, N., Peres,
27 M.F.T., Poblete-Cazenave, R., Rose, S., Svensson, R., Trajtenberg, N., van der Lippe, T.,
28 Veldkamp, J., Perdomo, C.J.V., Eisner, M.P., 2021. A global analysis of the impact of COVID-
29 19 stay-at-home restrictions on crime. *Nat. Hum. Behav.* 5, 868–877.
30 <https://doi.org/10.1038/s41562-021-01139-z>

31 Nochaiwong, S., Ruengorn, C., Awiphan, R., Kanjanarat, P., Ruanta, Y., Phosuya, C., Boonchieng,
32 W., Nanta, S., Chongruksut, W., Thavorn, K., Wongpakaran, N., Wongpakaran, T., 2021.
33 COVID-19 Public Stigma Scale (COVID-PSS): development, validation, psychometric analysis
34 and interpretation. *BMJ Open* 11, e048241–e048241. [https://doi.org/10.1136/bmjopen-2020-](https://doi.org/10.1136/bmjopen-2020-048241)
35 [048241](https://doi.org/10.1136/bmjopen-2020-048241)

36 Pan, D., Sze, S., Minhas, J.S., Bangash, M.N., Pareek, N., Divall, P., Williams, C.M., Oggioni, M.R.,

1 Squire, I.B., Nellums, L.B., Hanif, W., Khunti, K., Pareek, M., 2020. The impact of ethnicity on
2 clinical outcomes in COVID-19: A systematic review. *EClinicalMedicine* 23.
3 <https://doi.org/10.1016/j.eclinm.2020.100404>

4 R Foundation for Statistical Computing, Vienna, A.U. <https://www.R.org/>, n.d. R Core Team
5 (2019). *R: A language and environment for statistical computing*.

6 Raykov, T., 2001. Estimation of congeneric scale reliability using covariance structure analysis with
7 nonlinear constraints. *Br. J. Math. Stat. Psychol.* 54, 315–323.
8 <https://doi.org/10.1348/000711001159582>

9 Rek, S. V., Bühner, M., Reinhard, M.A., Freeman, D., Keeser, D., Adorjan, K., Falkai, P., Padberg, F.,
10 2021. The COVID-19 Pandemic Mental Health Questionnaire (CoPaQ): psychometric
11 evaluation and compliance with countermeasures in psychiatric inpatients and non-clinical
12 individuals. *BMC Psychiatry* 21, 426. <https://doi.org/10.1186/s12888-021-03425-6>

13 Revelle, W., Revelle, M.W., 2015. Package ‘psych.’ *Compr. R Arch. Netw.* 337, 338.

14 Rosseel, Y., 2012. Lavaan: An R package for structural equation modeling. *J. Stat. Softw.* 48, 1–36.
15 <https://doi.org/10.18637/jss.v048.i02>

16 Salazar de Pablo, G., Studerus, E., Vaquerizo-Serrano, J., Irving, J., Catalan, A., Oliver, D., Baldwin,
17 H., Danese, A., Fazel, S., Steyerberg, E.W., Stahl, D., Fusar-Poli, P., 2021. Implementing
18 Precision Psychiatry: A Systematic Review of Individualized Prediction Models for Clinical
19 Practice. *Schizophr. Bull.* 47, 284–297. <https://doi.org/10.1093/schbul/sbaa120>

20 Solmi, M., Cortese, S., Correll, C.U., 2022a. Editorial Perspective: Challenges of research focusing on
21 child and adolescent mental health during the COVID-19 era: what studies are needed? *J. Child*
22 *Psychol. Psychiatry Allied Discip.* 63, 122–125. <https://doi.org/10.1111/jcpp.13478>

23 Solmi, M., Cortese, S., Correll, C.U., 2021. Editorial Perspective: Challenges of research focusing on
24 child and adolescent mental health during the COVID-19 era: what studies are needed? *J. Child*
25 *Psychol. Psychiatry Allied Discip.* <https://doi.org/10.1111/jcpp.13478>

26 Solmi, M., Estradé, A., Thompson, T., Agorastos, A., Radua, J., Cortese, S., Dragioti, E., Leisch, F.,
27 Vancampfort, D., Thygesen, L.C., Weiser, M., Correll, C.U., 2022b. Physical and mental health
28 impact of COVID-19 on children, adolescents, and their families: The Collaborative Outcomes
29 study on Health and Functioning during Infection Times - Children and Adolescents (COH-FIT-
30 C&A). *J. Affect. Disord.* 299, 367–376. <https://doi.org/10.1016/j.jad.2021.09.090>

31 Solmi, M., Estradé, A., Thompson, T., Agorastos, A., Radua, J., Cortese, S., Dragioti, E., Leisch, F.,
32 Vancampfort, D., Thygesen, L.C., Weiser, M., Correll, C.U., 2022c. The collaborative outcomes
33 study on health and functioning during infection times in adults (COH-FIT-Adults): Design and
34 methods of an international online survey targeting physical and mental health effects of the
35 COVID-19 pandemic. *J. Affect. Disord.* 299, 393–407. <https://doi.org/10.1016/j.jad.2021.07.048>

36 Spitzer, R.L., Kroenke, K., Williams, J.B.W., Löwe, B., 2006. A brief measure for assessing

1 generalized anxiety disorder: The GAD-7. *Arch. Intern. Med.* 166, 1092–1097.
2 <https://doi.org/10.1001/archinte.166.10.1092>

3 Tabachnick, B., Fidell, L., 2013. *Using Multivariate Statistics*, 6th ed. Boston, MA.

4 Theberath, M., Bauer, D., Chen, W., Salinas, M., Mohabbat, A.B., Yang, J., Chon, T.Y., Bauer, B.A.,
5 Wahner-Roedler, D.L., 2022. Effects of COVID-19 pandemic on mental health of children and
6 adolescents: A systematic review of survey studies. *SAGE open Med.* 10, 20503121221086710–
7 20503121221086710. <https://doi.org/10.1177/20503121221086712>

8 Topp, C.W., Østergaard, S.D., Søndergaard, S., Bech, P., 2015. The WHO-5 Well-Being Index: A
9 Systematic Review of the Literature. *Psychother. Psychosom.* 84, 167–176.
10 <https://doi.org/10.1159/000376585>

11 Treweek, S., Forouhi, N.G., Narayan, K.M.V., Khunti, K., 2020. COVID-19 and ethnicity: who will
12 research results apply to? *Lancet*. [https://doi.org/10.1016/S0140-6736\(20\)31380-5](https://doi.org/10.1016/S0140-6736(20)31380-5)

13 UK_Government, 2011. English language skills by ethnicity, 2011 England and Wales.

14 van Buuren, S., Groothuis-Oudshoorn, K., 2011. mice: Multivariate Imputation by Chained Equations
15 in *R. J. Stat. Software*; Vol 1, Issue 3 .

16 Vandenberg, R.J., Lance, C.E., 2000. A Review and Synthesis of the Measurement Invariance
17 Literature: Suggestions, Practices, and Recommendations for Organizational Research. *Organ.*
18 *Res. Methods* 3, 4–70. <https://doi.org/10.1177/109442810031002>

19 Wickham, H., 2016. *ggplot2: Elegant Graphics for Data Analysis*, 2nd ed. TX, USA.

20 Zhang, S.X., Batra, K., Xu, W., Liu, T., Dong, R.K., Yin, A., Delios, A.Y., Chen, B.Z., Chen, R.Z.,
21 Miller, S., Wan, X., Ye, W., Chen, J., 2022. Mental disorder symptoms during the COVID-19
22 pandemic in Latin America - a systematic review and meta-analysis. *Epidemiol. Psychiatr. Sci.*
23 31, e23–e23. <https://doi.org/10.1017/S2045796021000767>

24
25

Figure 1. Pearson's correlation of COH-FIT domain (x-axis) and validation questionnaire (y-axis) measures for each of the COH-FIT domains.

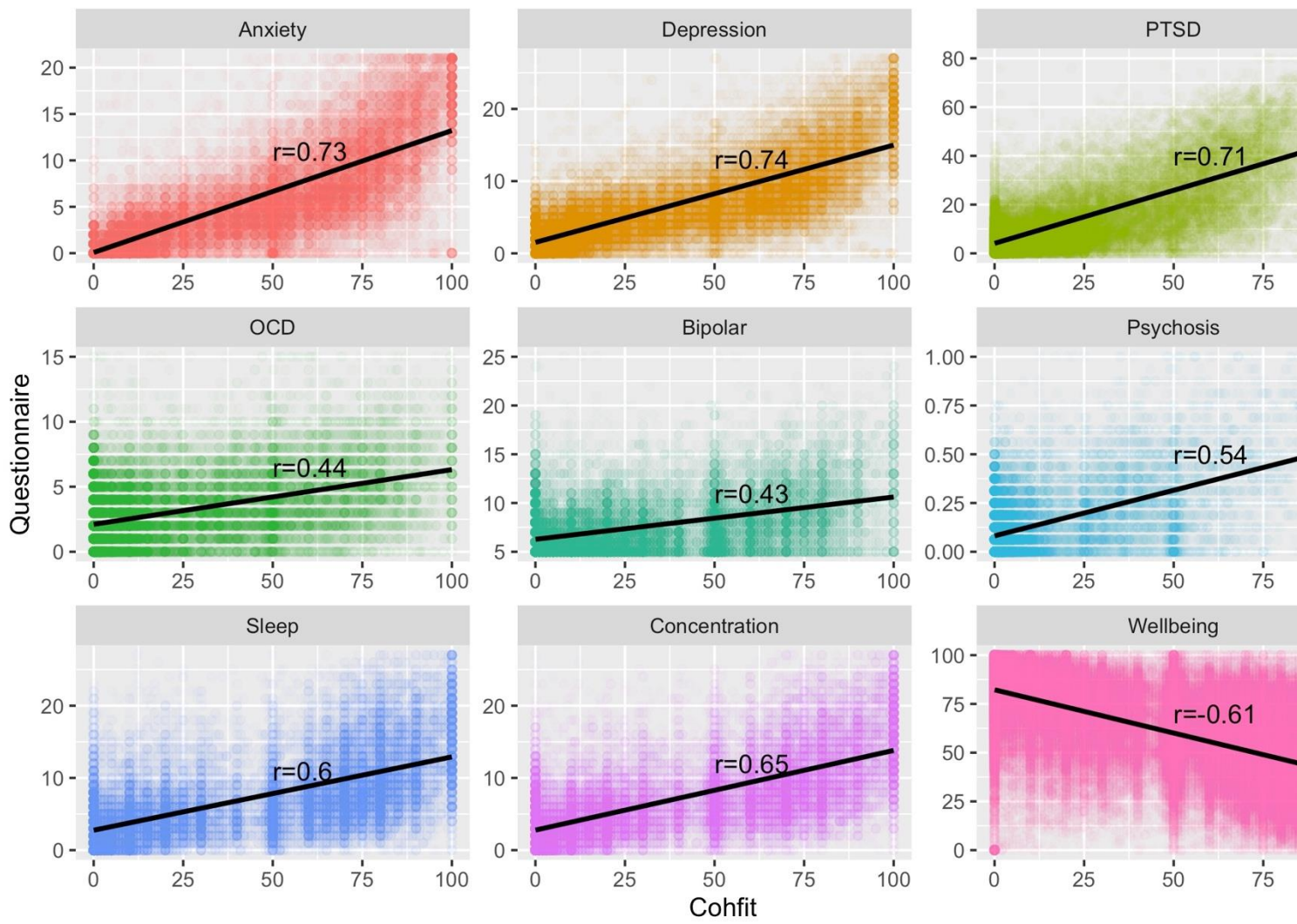


Figure 2. Factor structure of the composite psychopathology P-Score from confirmatory factor analysis.

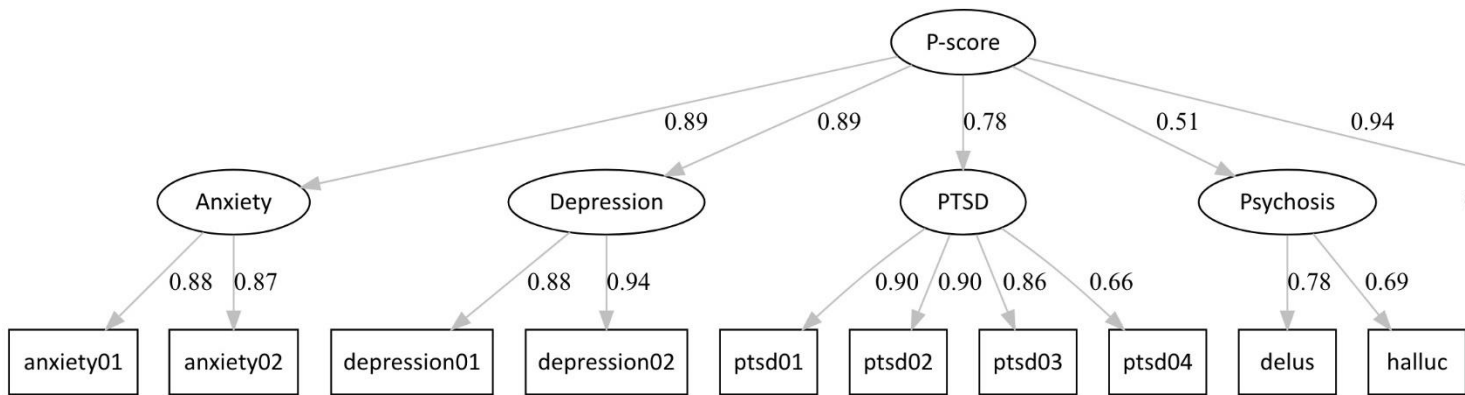


Table 1. Sample demographics

	Validation sample* (N = 22,456)	Total Survey sample (N = 153,876)
Gender	Female 69% Male 30% Other or not stated <1%	Female 67% Male 32% Other or not stated <1%
Age	42.5 years (SD = 15.0)	40.8 years (SD = 15.6)
Ethnicity	White 78% Asian 10% Mixed 1% Hispanic 1% African/African-descent <1% Other <1% Not stated 9%	White 69% Asian 20% Mixed 4% Hispanic 3% African/African-descent 3% Other 1% Not stated <1%
Education	None <1% Primary school 2% High school 25% College/university degree 64% PhD 8%	None <1% Primary school 3% High school 29% College/university degree 59% PhD 9%
Job Status	Current paid job 65% No paid job 35%	Current paid job 62% No paid job 38%

*This consisted of those completing the anxiety domain (COH-FIT anxiety and GAD-7). Similar demographic distributions were observed for other domains.

Table 2. COH-FIT items and loading matrix of P-Score in exploratory factor analysis

COH-FIT items*	Anxiety	Depression	PTSD	Psychosis	Psychophysiologic
Anxiety - Over the last two weeks, how often have you been bothered by any of the following problems:					
Feeling nervous, anxious, or on edge? [anxiety01]	.88	.01	-.01	.00	.05
Not being able to stop or control worrying? [anxiety02]	.71	.10	.09	.05	-.02
Depression - Over the last two weeks, how often have you been bothered by any of the following problems:					
Little interest or pleasure in doing things? [depression01]	-.01	.96	-.02	.00	.00
Feeling down, depressed, or hopeless? [depression02]	.14	.69	.08	.01	.06
PTSD - In the last two weeks, how much have you been bothered by any of the following problems, related to a stressful life experience:					
Repeated disturbing memories, thoughts, or images, or dreams of the stressful experience? [ptsd01]	.01	.01	.86	-.04	.05
Suddenly acting or feeling as if the stressful experience was happening again (as if you were reliving it)? [ptsd02]	-.01	-.01	.93	.03	-.04
Avoiding thinking about, or talking about, or having feelings related to, or avoiding engaging in activities or situations that remind you of the stressful experience? [ptsd03]	.00	.02	.84	.00	.01
Being "super alert" or watchful or on guard? [ptsd04]	.17	-.02	.47	.06	.09
Psychosis					
In the last two weeks, how much did you experience any of the following: i) believe that you seem to live through events exactly as they happened before (déjà vu), ii) believe that someone is out to get or harm you on purpose, iii) believe that your thoughts or actions are not your own; iv) see special meanings in advertisements, shop windows, or in the way things are arranged around you, v) believe that you have a very important special purpose or mission in life that others can't understand.? [delusional]	-.05	.03	.12	.60	.04
In the last two weeks, how much did you hear, see, smell, taste or feel things that other cannot? [hallucination]	.03	-.01	-.04	.83	-.01
Psychophysiologic					
In the last two weeks, how much have you experienced sleep problems (difficulty falling or staying asleep, early morning awakening)? [sleep]	.05	.05	.08	.09	.49
How difficult has it been for you to concentrate or focus, in the last two weeks? [focus]	-.11	.13	.03	.05	.70
How stressed have you felt in the last two weeks? [stress]	.14	-.05	.01	-.03	.74
P-score: Compute the mean item score for each of the 5 domains and then sum to create an overall P-score (0 – 500)					

Legend. COH-FIT, Collaborative Outcomes study on Health and Functioning during Infection Times; PTSD, post-traumatic stress disorder; *all COH-FIT items were 0-100 VAS scale.

Table 3. Reliability estimates for general and domain-specific factors

	Anxiety	Depression	PTSD	Psychosis	Psychophysiologic	P-score
omega	.86	.91	.90	.71	.78	.95
alpha	.86	.91	.90	.70	.78	.93