



King's Research Portal

DOI:

[10.1038/s41398-022-01872-7](https://doi.org/10.1038/s41398-022-01872-7)

Document Version

Publisher's PDF, also known as Version of record

[Link to publication record in King's Research Portal](#)

Citation for published version (APA):

Westwater, M. L., Murley, A. G., Diederer, K. M. J., Carpenter, T. A., Ziauddeen, H., & Fletcher, P. C. (2022). Characterizing cerebral metabolite profiles in anorexia and bulimia nervosa and their associations with habitual behavior. *Translational psychiatry*, 12(1), 103. [103]. <https://doi.org/10.1038/s41398-022-01872-7>

Citing this paper

Please note that where the full-text provided on King's Research Portal is the Author Accepted Manuscript or Post-Print version this may differ from the final Published version. If citing, it is advised that you check and use the publisher's definitive version for pagination, volume/issue, and date of publication details. And where the final published version is provided on the Research Portal, if citing you are again advised to check the publisher's website for any subsequent corrections.

General rights

Copyright and moral rights for the publications made accessible in the Research Portal are retained by the authors and/or other copyright owners and it is a condition of accessing publications that users recognize and abide by the legal requirements associated with these rights.

- Users may download and print one copy of any publication from the Research Portal for the purpose of private study or research.
- You may not further distribute the material or use it for any profit-making activity or commercial gain
- You may freely distribute the URL identifying the publication in the Research Portal


Take down policy

If you believe that this document breaches copyright please contact librarypure@kcl.ac.uk providing details, and we will remove access to the work immediately and investigate your claim.

ARTICLE OPEN



Characterizing cerebral metabolite profiles in anorexia and bulimia nervosa and their associations with habitual behavior

Margaret L. Westwater^{1,2} , Alexander G. Murley³, Kelly M. J. Diederer⁴, T. Adrian Carpenter³, Hisham Ziauddeen^{1,5,6,7} and Paul C. Fletcher^{1,5,7}

© The Author(s) 2022

Anorexia nervosa (AN) and bulimia nervosa (BN) are associated with altered brain structure and function, as well as increased habitual behavior. This neurobehavioral profile may implicate neurochemical changes in the pathogenesis of these illnesses. Altered glutamate, *myo*-inositol and *N*-acetyl aspartate (NAA) concentrations are reported in restrictive AN, yet whether these extend to binge-eating disorders, or relate to habitual traits in affected individuals, remains unknown. We therefore used single-voxel proton magnetic resonance spectroscopy to measure glutamate, *myo*-inositol, and NAA in the right inferior lateral prefrontal cortex and the right occipital cortex of 85 women [$n = 22$ AN (binge-eating/purging subtype; AN-BP), $n = 33$ BN, $n = 30$ controls]. To index habitual behavior, participants performed an instrumental learning task and completed the Creature of Habit Scale. Women with AN-BP, but not BN, had reduced *myo*-inositol and NAA concentrations relative to controls in both regions. Although patient groups had intact instrumental learning task performance, both groups reported increased routine behaviors compared to controls, and automaticity was related to reduced prefrontal glutamate and NAA participants with AN-BP. Our findings extend previous reports of reduced *myo*-inositol and NAA levels in restrictive AN to AN-BP, which may reflect disrupted axonal-glia signaling. Although we found inconsistent support for increased habitual behavior in AN-BP and BN, we identified preliminary associations between prefrontal metabolites and automaticity in AN-BP. These results provide further evidence of unique neurobiological profiles across binge-eating disorders.

Translational Psychiatry (2022)12:103; <https://doi.org/10.1038/s41398-022-01872-7>

INTRODUCTION

Bulimia nervosa (BN) and the binge-eating and purging diagnostic subtype of anorexia nervosa (AN-BP) are complex psychiatric conditions that share core symptoms, including recurrent binge-eating and compensatory behaviors (e.g., vomiting). The primary diagnostic distinction between AN-BP and BN relates to an individual's body mass index (BMI), wherein individuals with AN-BP are underweight and those with BN are not [1]. Neuroimaging studies have begun to characterize the neural correlates of these illnesses, identifying alterations in the structure and function of brain regions that subserve learning, self-regulatory control and bodily perception in affected individuals [2–6]. However, as perturbed metabolic functioning is increasingly implicated in AN and, to a lesser degree, BN [7, 8], a more comprehensive understanding of their neurocognitive mechanisms will require consideration of interacting metabolic processes, both peripherally and within the brain.

Proton magnetic resonance spectroscopy (¹H-MRS) enables in vivo measurement of tissue metabolite concentrations, which can lend insight into various physiological processes within a given anatomical region [9]. In the context of mental illness,

selecting the region based on its putative relevance to the disorder under examination can offer useful ways to begin to understand structure-function relations and their disruption. Several studies have assessed cerebral metabolites in eating disorders using ¹H-MRS, yet these have been primarily limited to small AN samples, where few consistent findings have emerged (for comprehensive review, see [10]). Schlemmer et al. [11] reported increases in the ratio of choline (a marker of cell membrane integrity) to total creatine (a stable marker of energy metabolism), in parieto-occipital white matter (WM) among adolescents with AN. Affected adolescents also demonstrated reduced relative concentrations of *N*-acetyl aspartate (NAA) in parieto-occipital WM, and NAA reductions have been observed in the anterior insula in adult women with AN [10]. Although NAA is highly concentrated in gray matter (GM) and often considered a marker of neuronal density [12], it has various functional roles, including osmoregulation, myelin synthesis, neuron-glia signaling, and glutamate turnover [13]. Moreover, adults with AN have reduced creatine and *myo*-inositol (a marker of glial cell integrity [14]) concentrations in dorsolateral prefrontal cortex GM, and lower levels of the composite metabolite 'Glx', which reflects both

¹Department of Psychiatry, University of Cambridge, Herchel Smith Building, Addenbrooke's Hospital, Cambridge CB2 0SZ, UK. ²Department of Radiology and Biomedical Imaging, Yale University School of Medicine, New Haven, CT, USA. ³Department of Clinical Neurosciences, University of Cambridge, Herchel Smith Building, Addenbrooke's Hospital, Cambridge CB2 0SZ, UK. ⁴Department of Psychosis Studies, Institute of Psychiatry, Psychology and Neuroscience, King's College London, De Crespigny Park, London SE5 8AF, UK. ⁵Wellcome Trust MRC Institute of Metabolic Science, University of Cambridge, Cambridge Biomedical Campus, Cambridge CB2 0QQ, UK. ⁶Cambridge and Peterborough NHS Foundation Trust, Cambridge, UK. ⁷These authors jointly supervised this work: Hisham Ziauddeen, Paul C. Fletcher. ✉email: mw658@cam.ac.uk

Received: 23 September 2021 Revised: 21 February 2022 Accepted: 24 February 2022

Published online: 15 March 2022

glutamate and glutamine, in the anterior cingulate cortex (ACC; [15]). Findings of reduced glutamate and *myo*-inositol have been replicated in both adolescent and adult AN across various brain regions, including medial frontal, anterior cingulate, and occipital cortices and the putamen [16, 17]. Correlations between BMI and cerebral metabolites in these AN samples are overwhelmingly nonsignificant [10, 11, 15, 16, 18]; however, one phosphorous (^{31}P)-MRS study identified a negative association between BMI and choline in parietal cortex across adolescents with and without AN [19].

Neural biochemistry has yet to be explicitly studied in BN, but previous examination of mixed samples of patients with AN and BN lends some insight into potential metabolic alterations in this illness. Emerging adults with either AN or BN have reduced lipid concentrations in frontal and occipital WM, as well as decreased *myo*-inositol in frontal WM [20]. Moreover, frontal WM lipid and *myo*-inositol concentrations were positively correlated with BMI across all participants, whereas a composite measure of cerebellar macromolecules and 'Glx' was negatively correlated with BMI. However, a relatively small sample of adults with AN or BN did not differ significantly from matched controls in spectra acquired from the ACC [18].

Such observations are potentially informative since altered neural chemistry in eating disorders could suggest a role for these metabolites in higher-order cognition [15], such as instrumental learning. The persistent and often intractable nature of binge-eating and compensatory episodes could suggest a role for dysregulated learning in the pathogenesis of AN-BP and BN, where biases toward stimulus-response ('habitual') rather than action-outcome ('goal-directed') behavior may explain, in part, recurrent loss-of-control eating [21–23]. Alterations in learning have been observed in adolescents [6] and adults [24] with BN, and these may contribute to disordered eating symptoms by limiting one's ability to flexibly transition between slower, goal-directed behaviors and automatic ones [25]. Consistent with this, patients with binge-eating disorder demonstrate inefficient 'switching' between exploratory and exploitative behavior in a changing environment [26]. This distinction between habitual and goal-directed systems can also be framed in terms of a difference between model-free and model-based processes [27, 28]. These frameworks make analogous distinctions between processes that are primarily stimulus driven (habit-based or model-free processes) versus those that emphasize the outcome of the action or decision, such as the effect that it will have on the individual's state (goal-directed or model-based processes). While the dichotomies inherent in both frameworks are simplistic [28], they provide a useful heuristic for considering how fluctuations in the deployment of these systems may explain altered behaviors. For example, overreliance on model-free processes may engender habits [27], whereas model-based learning promotes goal-directed behavior, which can reduce habit formation [29].

Although both goal-directed and habitual systems support instrumental learning, these systems have largely dissociable neural circuits. Whereas dorsomedial striatal and ventromedial prefrontal areas facilitate goal-directed learning and action [30], corticostriatal loops encompassing the posterior putamen and premotor cortex are traditionally associated with habitual responses (for review, see [31]). Reduced glutamate turnover in the putamen has been linked to greater habitual tendencies in patients with cocaine use disorder [32]; however, it remains unknown if such an association would generalize to other regions implicated in habitual control. For example, the inferior lateral prefrontal cortex (ilPFC) has been shown to track both model-free and model-based systems, thus determining the relative control of each system over behavior [33]. Moreover, theta-burst stimulation of the right ilPFC attenuates goal-directed and increases habitual behavioral control [34], supporting a causal role for this region in achieving an optimal balance between goal-directed and habitual

processing. Assessment of right ilPFC metabolite profiles could therefore lend complementary insight into the neurobiological mechanisms that guide goal-directed and habitual responding.

Here, we sought to extend previous reports of altered cerebral metabolites and greater habitual tendencies in women with eating disorders by examining these processes, for the first time, in women with AN-BP, BN, and matched controls. Participants underwent ^1H -MRS scanning and behavioral testing within an inpatient study session. On the basis of prior literature [10, 15–17, 20], glutamate, *myo*-inositol, and NAA levels were measured in the right ilPFC and the right occipital cortex, which served as a control region. To relate observations at the neurometabolic level to goal-directed and habitual systems, participants performed an instrumental learning task, which manipulated stimulus-outcome conflict to distinguish between goal-directed and habitual learning [30, 35, 36]. Participants also completed the Creature of Habit Scale (COHS; [37]), a validated measure of habitual behavior in daily life that is comprised of two subscales for routine and automatic responses. As laboratory paradigms assess experimentally induced habits that are substantially less practiced than those in an individual's day-to-day life, the COHS serves as a complementary index of the habitual system. We anticipated reduced glutamate, *myo*-inositol, and NAA concentrations in women with AN-BP and BN compared to control participants. Additionally, we predicted that both patient groups would show a shift in balance toward habitual responding, as evidenced by relative insensitivity to outcome devaluation after learning a set of stimulus-outcome pairings and greater COHS scores. Finally, exploratory analyses examined whether ilPFC glutamate, *myo*-inositol, and NAA levels were associated with a shift toward habit-based responding.

PATIENTS AND METHODS

Participants

Eighty-five women ($M \pm SD = 23.96 \pm 3.98$ years) were recruited via posted advertisements and eating disorder services in the Cambridgeshire, UK area to three participant groups: AN-BP ($n = 22$; 86% White, 9% Asian, 5% Mixed), BN ($n = 33$; 82% White, 9% Asian, 9% Mixed) and matched control participants ($n = 30$; 70% White, 6.7% Black, 10% Asian, 6.7% Mixed, 6.7% Other; see Table 1). Patient participants were free of alcohol or substance use disorders within the past 6 months, and they had no lifetime history of bipolar disorder, psychotic spectrum disorders, or neurodevelopmental disorders. Control participants reported no current or lifetime psychopathology. Exclusion criteria for all participants included: left handedness, MRI contraindications, estimated IQ < 80 , BMI $> 29.9 \text{ kg/m}^2$, neurological or cardiovascular disease, lactation, prior bariatric surgery and high nicotine dependence (indexed via the Fagerstrom Test for Nicotine Dependence [38]). All participants provided written, informed consent prior to undergoing any study procedures. The Cambridge East Research Ethics Committee approved the study (Ref. 17/EE/0304), and all procedures were performed in accordance with local regulations.

Study procedures

As a detailed explanation of the study protocol has been reported previously [2, 39], we provide a summary here (see also Supplementary Material). Following a telephone screening, potential volunteers completed an outpatient screening session prior to scanning, which included body composition testing, blood sampling, cognitive testing, and two, semi-structured clinical interviews (e.g., the SCID-5 [40] and EDE v16 [41]) to establish current diagnoses of AN-BP, BN, and comorbid psychiatric conditions. Eligible participants ($n = 85$) then attended a two-day, inpatient study session, which included a cognitive testing and questionnaire battery, repeated MRI scanning, and serial blood sampling to enable measurement of circulating hormones under neutral and stressful conditions. On each day of the inpatient session, participants underwent either an acute stress induction or control task during MRI scanning. All participants underwent ^1H -MRS scanning on their 'control' day, and spectra were acquired prior to completion of both the fMRI task and induction. During spectra acquisition, participants were instructed to remain still, keep their eyes open and gaze at a fixation cross. The order of

Table 1. Sample demographic and clinical characteristics.

Characteristic	AN-BP (n = 22)		BN (n = 33)		HC (n = 30)		Analysis	
	M	SD	M	SD	M	SD	$\chi^2(df)$, $F(df)$, W , $t(df)$	p value
Age (y)	24.6	4.7	23.6	3.9	23.9	3.5	$\chi^2(2) = 0.8$	0.69
BMI (kg/m ²)	16.4	1.4	22.0	2.4	21.9	2.1	$\chi^2(2) = 48.4$	<0.001
IQ ^a	116	5	114	5	114	5	$\chi^2(2) = 3.2$	0.21
Age of onset (y)	15.6	2.4	16.2	3.1	–	–	$t(51.8) = -0.8$	0.42
Illness duration (y)	9.0	5.8	7.4	4.0	–	–	$t(34.4) = 1.1$	0.27
Beck Depression Inventory	35.3	12.0	32.7	10.5	2.4	2.8	$\chi^2(2) = 57.7$	<0.001
Trait Anxiety Inventory	63.1	10.4	62.8	7.3	33.0	6.9	$F(2) = 151.1$	<0.001
Eating Disorder Examination Questionnaire	4.4	0.8	4.6	0.8	0.2	0.2	$\chi^2(2) = 58.0$	<0.001
Eating Disorder Examination ratings ^b								
Objective binge-eating episodes	38.1	47.9	23.0	29.1	–	–	$W = 317.5$	0.43
Subjective binge-eating episodes	9.5	12.8	6.6	6.2	–	–	$W = 341.5$	0.93
Vomiting episodes	43.5	51.6	24.2	31.0	–	–	$W = 304.0$	0.31
Laxative episodes	1.1	3.4	2.0	3.9	–	–	$W = 421.5$	0.18
Exercise episodes	7.4	13.6	10.9	9.4	–	–	$W = 478.5$	0.04
	N	%	N	%	N	%	$\chi^2(df)$	p value
Comorbid diagnoses								
Anxiety disorder	3	13.6	3	9.1	–	–	$\chi^2(1) = 0.3$	0.69
Major depressive episode	15	68.2	16	48.5	–	–	$\chi^2(1) = 2.1$	0.15
Personality disorder	2	9.1	5	15.2	–	–	$\chi^2(1) = 0.4$	0.69
Any current treatment ^c	13	59.0	15	45.5	–	–	$\chi^2(1) = 1.0$	0.32
Psychotherapy	9	40.9	9	27.3	–	–	$\chi^2(1) = 1.1$	0.29
Medication	10	45.5	10	30.3	–	–	$\chi^2(1) = 1.3$	0.25
Prior restrictive AN	14	63.6	10	30.3	–	–	$\chi^2(1) = 6.0$	0.01

^aEstimated full-scale IQ from the National Adult Reading Test.

^bEDE ratings reflect counts over the previous 28 days.

^cNo patient participants were receiving inpatient treatment. Group differences were evaluated using one-way ANOVA and, for non-normally distributed data, the nonparametric Kruskal–Wallis test. The two-samples *t*-test (two-sided), Mann–Whitney *U* test and χ^2 test were used to assess differences between AN-BP and BN groups.

acquisition from each voxel of interest (VOI) was counterbalanced across participants.

MRI data acquisition

Participants underwent MRI scanning on a 3T Siemens Skyra^{Fit} scanner (Erlangen, Germany) with a 32-channel, GRAPPA parallel-imaging head coil. T1-weighted anatomical images (TE = 2.95 ms, TR = 2300 ms, flip angle = 9°, acquisition matrix = 256 × 256 mm, 1.0 mm isotropic resolution) were acquired for the placement of two, 20 mm isotropic VOIs in the right iLPFC and right medial occipital cortex (Fig. 1A, B).

For each VOI, first- and second-order B_0 field shims were adjusted using 3D gradient-echo shimming. RF pulses were then calibrated in semi-LASER (sLASER) and for water suppression by (1) monitoring the water signal intensity across increasing levels of RF power and (2) choosing the settings for maximum signal [42]. Spectra were acquired using a semiLASER sequence (total TE = 28 ms, TR = 5000 ms, 64 transients), which uses a single slice-selective 90° excitation pulse [43–45]. Water signal suppression was achieved using variable pulse power and optimisation relaxation delays (VAPOR) water suppression, with one additional pulse following the seventh VAPOR pulse to optimally reduce in vivo water signal [46]. VAPOR pulses were interleaved with outer volume suppression pulses to control for saturation effects. In addition to metabolite spectra, unsuppressed water reference scans were collected and used to remove residual eddy current effects.

Slips of action paradigm

Participants performed a four-stage instrumental learning task outside of the scanner within the cognitive testing battery. The task had been adapted from prior work to include photos of animals, as opposed to fruit,

as training and outcome stimuli (Fig. 2; [35, 36]). Throughout the discrimination training phase, participants were required to learn which response (“M” or “Z” on a standard keyboard) to a given stimulus lead to a valued outcome (i.e., one that was worth points). Participants received trial-by-trial feedback over the course of 8 blocks (12 trials each), and they were told that the aim of the task was to earn as many points as possible. The second stage of the task tested participants on their outcome-action knowledge. In this stage, each trial (36 total) presented two of the outcomes from the discrimination training, where one outcome was devalued (indicated by a superimposed red “X”) and not worth any points. Participants were instructed to make a response that previously led to the valued outcome; however, no feedback was provided. The third and fourth stages of the task tested habits (via the slips-of-action test) and general inhibitory control (via a control test of disinhibition), and the order of these stages was randomized across participants. For the slips-of-action test, participants were shown all of the outcomes from the initial training, and two outcomes had a red “X” overlaid, indicating that they were no longer worth points. Participants were then shown the stimuli from the discrimination training, and they were told to only respond to stimuli that were associated with valued outcomes and withhold responses to stimuli associated with devalued outcomes. As such, responses to stimuli with devalued outcomes are considered ‘slips-of-action’ that indicate an overreliance on stimulus-response learning. Finally, participants performed the test of disinhibition, which had an identical structure to the slips-of-action test with one key distinction: for this test, the discriminative stimuli were devalued (with a red “X”) instead of the outcomes. Stimuli were presented in rapid succession, and participants were told to respond to ‘valued’ stimuli and withhold responses for ‘devalued’ stimuli. For all stages of the task, stimuli were presented for a maximum of 2000 ms with a 1500 ms interstimulus interval. Following the task, participants completed

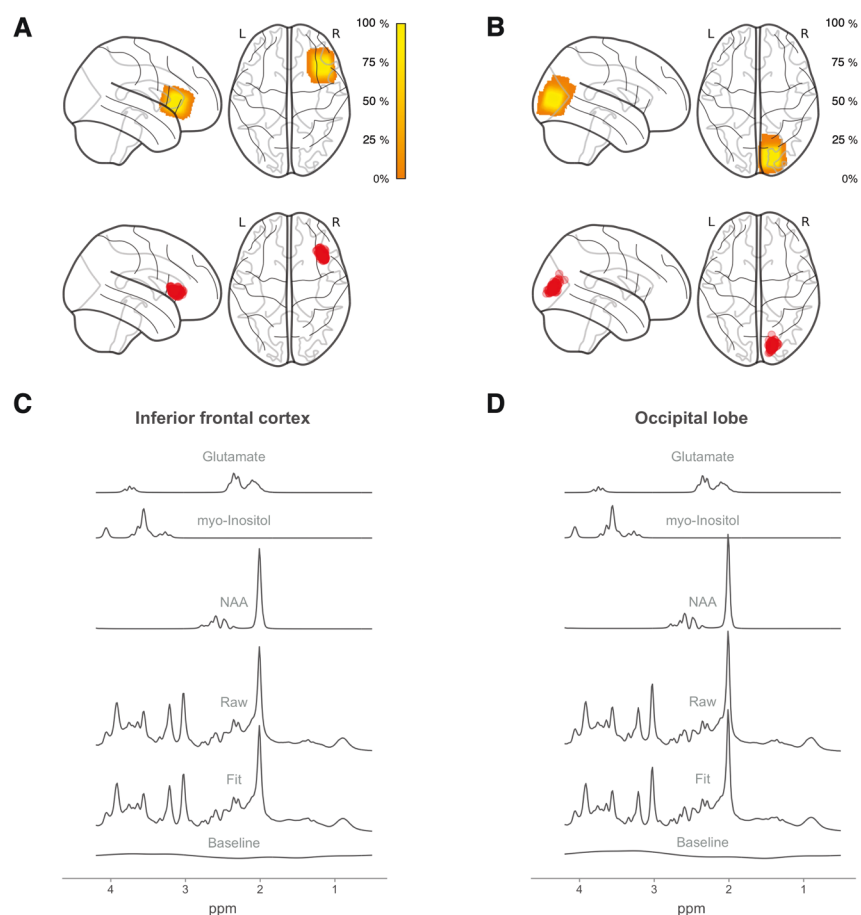


Fig. 1 Spectroscopy voxel location and composition. Voxel density maps of (A) inferior frontal ($MNI_{x,y,z} = 40, 21, 9$) and (B) occipital ($MNI_{x,y,z} = 17, -87, 14$) voxel placement overlaid on a glass brain template. MNI coordinates refer to center of mass of the group composite voxel. Color bars indicate percentage overlap across all participants. Centroids for each participant's 1H -MRS voxel are shown in red. Mean spectra from all participants for (C) inferior frontal and (D) occipital voxels, showing the raw data, LCMoel fit, baseline, glutamate, myo-inositol, and *N*-acetyl aspartate. Code for voxel density and centroid figures [77, 78] was retrieved from: <https://github.com/nwd2918/MRS-voxel-plot>.

a brief questionnaire about their knowledge of the stimulus, outcome and response associations (see Supplementary Material; Fig. S1).

Analytic plan

Neuroimaging analysis. Pre-processing of 1H -MRS was completed in Matlab (v2016a; The Mathworks, Natick, MA, USA), using the MRSpa package (<https://www.cmrr.umn.edu/downloads/mrspa/>; see Supplementary Material for details).

We quantified the sLASER spectra using LCMoel (v6.3.3; [47, 48]; Fig. 1C, D) in line with consensus recommendations for clinical MRS research [49]. Metabolite concentrations were estimated with water scaling, using a basis set comprised of metabolites between 0.5 and 4.2 part per million (including glutamate, myo-inositol, and NAA; see Table 2 for tissue-corrected concentrations). Only metabolites that were quantified with Cramer-Rao lower bounds (CRLB) values <30% were classified as detected. CRLB values >20% were classified as outliers; however, no participants were excluded on this basis (see Table S1).

As estimation of 1H -MRS metabolite concentrations varies across tissue types and CSF [50, 51], we calculated the fraction of GM, WM, and CSF within each VOI (see Supplementary Material). The mean percentage of each tissue was entered into the following equation from Egerton et al. [52] to generate corrected metabolite concentrations (M_{corr}) of metabolite M :

$$M_{corr} = \frac{M(WM + 1.21 \times GM + 1.55 \times CSF)}{(WM + GM)}$$

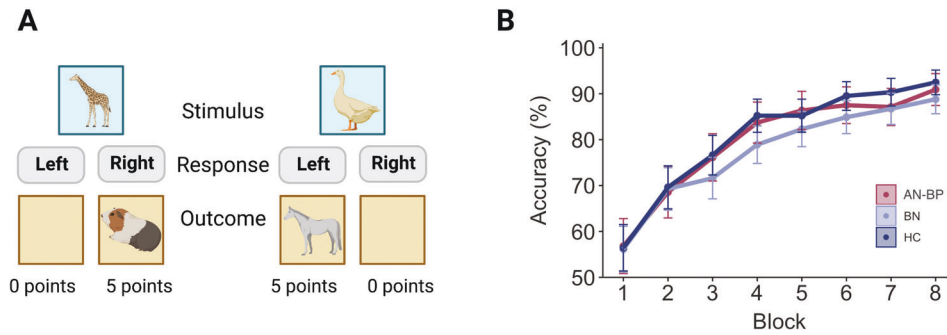
The proportion of GM, WM, and CSF in each VOI did not differ significantly by group (all p 's > 0.05); however, linear mixed-effects models indicated

reduced proportions of CSF ($\beta(SE) = -3.75(0.26)$, $t(82) = -14.68$, $p < 0.001$) and GM ($\beta(SE) = -12.54(0.80)$, $t(82) = -15.58$, $p < 0.001$) in occipital VOIs. These reductions were offset by increases in the proportion of WM in occipital relative to right IFG VOIs ($\beta(SE) = -16.72(0.96)$, $t(82) = -17.47$, $p < 0.001$).

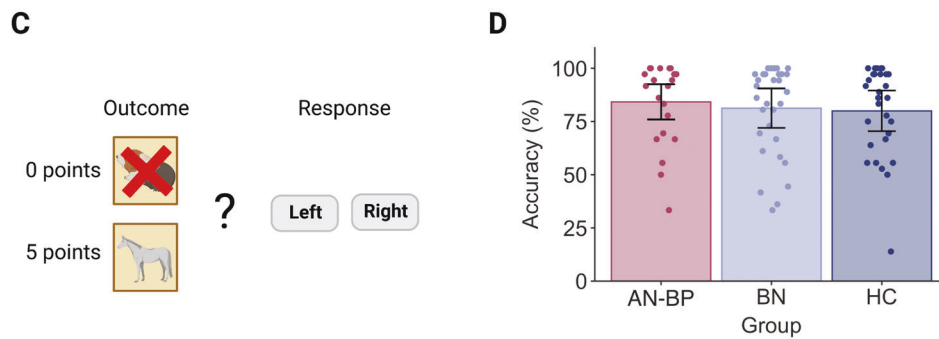
Using linear mixed-effects modeling (R package 'nlme' [53]), we examined group and regional differences in the three metabolites of interest: glutamate, myo-inositol, and NAA. Fixed effects of group (AN-BP > HC, BN > HC) and region (ilPFC > occipital) were entered into each model, and random intercepts for region were nested within the subject's random effect. To account for multiple models, we applied a Bonferroni correction for three tests, yielding an alpha threshold of $0.05/3 = 0.017$. Results with corresponding p -values > 0.017 but ≤ 0.05 are referred to as 'nominally significant.' Visual inspection of quantile-quantile plots was used to determine the normality of model residuals. Given the potential confounding effects of psychotropic medication on metabolite concentrations [54], we conducted sensitivity analyses controlling for current medication use. To complement group comparisons, correlation analyses examined dimensional associations between several indices of eating disorder severity (e.g., BMI, eating disorder, and depressive symptoms) and cerebral metabolites across the full sample and within each group (see Supplementary Material).

One participant was excluded, and subsequently offered clinical follow-up, on the basis of WM abnormalities, and spectra from the occipital VOI could not be acquired for another participant due to a technical error. In total, ilPFC and occipital spectra from 84 and 83 participants, respectively, were analyzed via LCMoel. Finally, we classified extreme corrected concentration values (>6 SD from the mean) as outliers, which resulted in the exclusion of one observation for myo-inositol and NAA models, respectively.

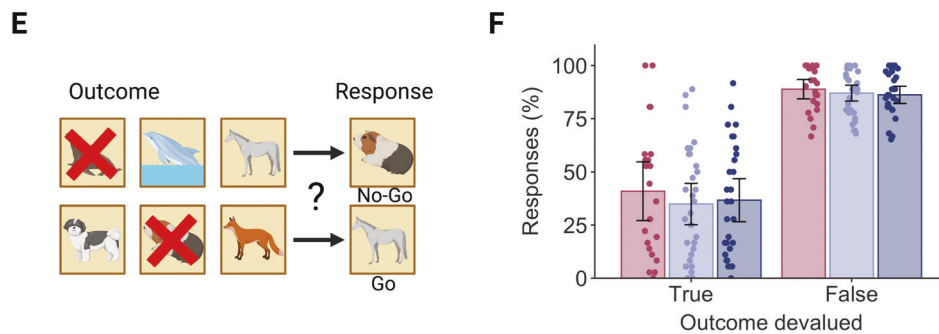
Instrumental Training



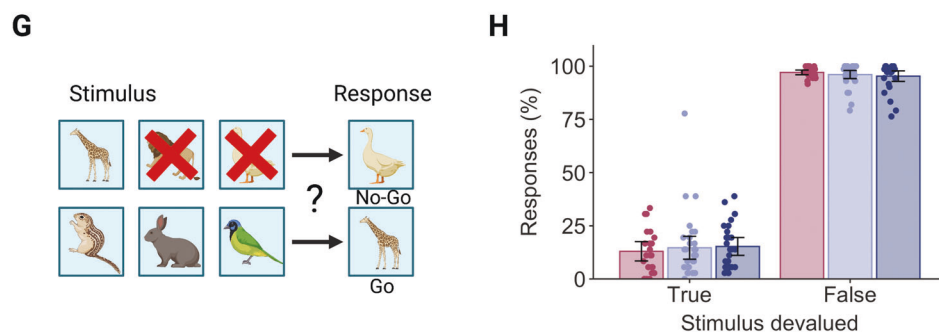
Outcome Devaluation



Test of Stimulus-Response Habits (Slips of Action)



Test of Disinhibition



Behavioral and exploratory analyses. Linear mixed-effects models evaluated group differences in performance [accuracy and reaction time (RT)] during the instrumental learning, test of disinhibition, and slips-of-action stages of the instrumental learning task, and we tested group differences in sensitivity to outcome devaluation (stage 2) using multiple regression (see Supplementary Material).

Two participants failed to perform above chance level (i.e., >50% accuracy) on the final block of the instrumental learning stage. Since, in the absence of learning, performance on the Slips of Action task becomes uninterpretable, these participants were excluded from further behavioral analyses. One additional participant was excluded from analysis of the test of disinhibition due to a technical error.

Fig. 2 Performance on the Slips of Action task. **A** During the instrumental training stage, participants learned stimulus-action-outcome contingencies by trial and error. Trial-by-trial feedback consisted of either a picture of another animal and the number of points gained, or an empty box and no points gained. **B** Discrimination learning improved across each 12-trial block ($p < 0.0001$), and accuracy did not differ significantly between groups (all p 's > 0.05). **C** For the second stage, participants were presented with two outcomes simultaneously, where one outcome was devalued (as indicated by a superimposed 'X') and no longer worth points. **D** Patient groups had nonsignificant differences in accuracy (all p 's > 0.05), which would suggest intact sensitivity to outcome devaluation in both AN-BP and BN groups. **E** Next, participants performed the 'Slips of Action' test. At the start of each block, participants were shown all six outcome animals, and two were devalued. Participants then selectively responded to discriminative stimuli that were associated with a reward and withheld responses to devalued stimuli. **F** Participants made significantly more responses to valued outcomes ($p < 0.0001$), and a group-by-stimuli interaction was nonsignificant. **G** The Test of Disinhibition served as a control task by indexing participants' inhibitory control: participants were shown the six discriminative stimuli, and two animals were devalued. Participants were instructed to respond only to valued stimuli. **H** Participants' response rate was significantly higher for valued stimuli ($p < 0.0001$), and response rate did not differ between groups. The order of Stages 3 and 4 (i.e., the Slips of Action and Test of Disinhibition stages) was counterbalanced across participants. Error bars = 95% CI. Created with BioRender.com.

Table 2. LCModel corrected metabolite concentrations by group and region.

Metabolite	Group			Analysis					
	AN-BP	BN	HC	AN-BP > HC		BN > HC		iPFC > OCC	
	M (SD)	M (SD)	M (SD)	β (SE)	p value	β (SE)	p value	β (SE)	p value
Glutamate									
Inferior frontal cortex	9.52 (0.88)	10.08 (1.05)	9.76 (1.02)	-0.29 (0.20)	0.14	0.25 (0.18)	0.16	2.56 (0.15)	<0.0001
Occipital cortex	7.14 (0.74)	7.67 (1.31)	7.49 (0.71)						
myo-Inositol									
Inferior frontal cortex	5.72 (0.94)	6.34 (0.60)	6.33 (0.56)	-0.55 (0.18)	0.004	0.08 (0.17)	0.64	0.42 (0.06)	<0.0001
Occipital cortex	5.34 (0.96)	6.15 (1.17)	5.82 (0.67)						
Total NAA									
Inferior frontal cortex	11.62 (0.54)	12.28 (0.80)	12.26 (0.85)	-0.42 (0.15)	0.007	-0.07 (0.14)	0.60	0.55 (0.10)	<0.0001
Occipital cortex	12.12 (0.65)	12.52 (1.90)	12.24 (0.55)						

NAA *N*-acetyl aspartate.

Values represent absolute concentration (mM) following correction for partial volume effects. Analysis corresponds to results from linear mixed-effects models. Data were available from $n = 22$ AN-BP and $n = 30$ control participants for both regions, whereas inferior frontal and occipital spectra were acquired from $n = 32$ and $n = 31$ women with BN, respectively.

Finally, exploratory multiple regression analyses examined associations between habitual responding and metabolite levels and whether these were specific to the iPFC. Specifically, we tested whether main and interaction effects of group, iPFC and occipital metabolite levels were associated with COHS subscales and the mean difference score of responses during the slips-of-action test. Exploratory results were considered statistically significant at $\alpha = 0.05$.

RESULTS

Neuroimaging results

Myo-inositol levels were significantly reduced in AN-BP, but not BN, relative to healthy women (β (SE) = -0.55(0.18), $t(81) = -2.98$, $p = 0.004$; Fig. 3A). Although *myo*-inositol levels were greater in the iPFC relative to occipital cortex (β (SE) = -0.42(0.06), $t(81) = 7.13$, $p < 0.0001$), group-by-VOI interaction effects were nonsignificant (all p 's > 0.05). Similarly, NAA was reduced in AN-BP compared to control participants (β (SE) = -0.42(0.15), $t(81) = -2.75$, $p = 0.007$) and increased in the iPFC relative to occipital VOI (β (SE) = 0.55(0.10), $t(81) = 5.60$, $p < 0.0001$). Nonsignificant differences were observed in BN ($p = 0.60$), and a group-by-VOI interaction was nonsignificant (all p 's > 0.05). Diagnostic status was not significantly related to glutamate concentration; however, as with the other metabolites, glutamate levels were increased in prefrontal cortex (β (SE) = 2.36(0.15), $t(82) = 15.69$, $p < 0.0001$). There were no significant group differences in MRS spectra quality metrics (Table S1), which suggests that results were not confounded by group differences in, e.g., head motion artifacts.

Sensitivity analyses identified a nominally significant effect of medication status on *myo*-inositol levels, where concentrations were reduced among participants who currently used medication (β (SE) = -0.41(0.18), $t(80) = -2.22$, $p = 0.03$). When controlling for medication use, the observed reduction in *myo*-inositol in AN-BP was nonsignificant (β (SE) = -0.38(0.19), $t(80) = -1.97$, $p = 0.052$). However, we note that the point estimate for this conditional effect ($\beta = -0.38$, 95%CI = [-0.76, -0.002]) fell within the confidence interval of the original model ($\beta = -0.55$, 95%CI = [-0.91, -0.19]) and vice versa. NAA levels were unrelated to medication status, and NAA remained nominally reduced in women with AN-BP compared to controls with the inclusion of this covariate (β (SE) = -0.35(0.17), $t(80) = -20.09$, $p = 0.04$).

Glutamate, *myo*-inositol and NAA concentrations were not significantly correlated with BMI across the full sample, and within-group correlations were also nonsignificant (Table S2). However, iPFC glutamate levels were moderately correlated with depressive scores in the control group (Fig. S2). In the BN group, inferior frontal *myo*-inositol and NAA levels were negatively associated with eating disorder and depressive symptom scores, respectively.

Behavioral results

Instrumental learning. During the initial training, a significant effect of block on accuracy (β (SE) = -4.44(0.21), $t(580) = -21.03$, $p < 0.0001$) and RT (β (SE) = -0.13(0.007), $t(580) = -17.50$, $p < 0.0001$) indicated that participants learned to select the response that yielded a rewarding outcome for each stimulus (see Fig. 2B).

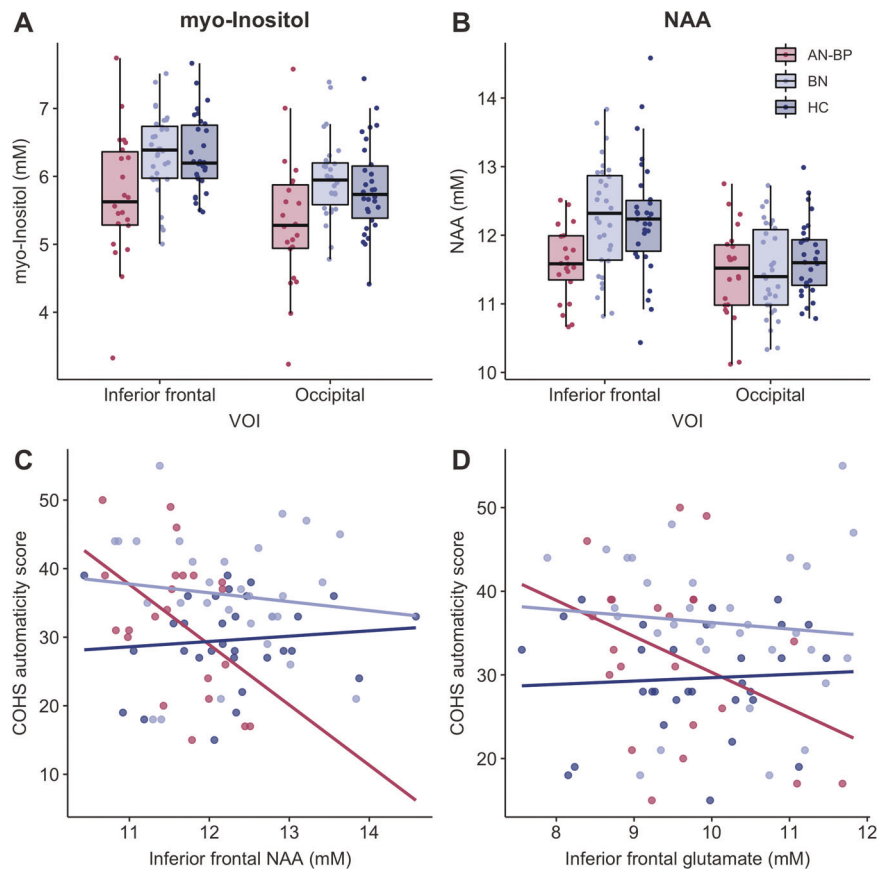


Fig. 3 Cerebral metabolites are altered in anorexia nervosa and associated with automaticity. Women with AN-BP, but not BN, had reduced concentrations of **A** *myo*-inositol ($p = 0.004$) and **B** NAA ($p = 0.007$) relative to control participants in right inferior lateral prefrontal and occipital cortices. Metabolite values are corrected for gray matter, white matter and CSF. Exploratory analyses found that associations between right inferior prefrontal metabolite levels and automaticity scores differed between AN-BP and control groups, where reductions in **C** NAA ($p = 0.015$) and **D** glutamate ($p = 0.039$) were related to greater habitual tendencies in women with AN-BP. NAA ($F(8, 72) = 8.40, p = 0.02, R^2_{\text{Adjusted}} = 0.12$) and glutamate ($F(8, 73) = -8.36, p = 0.02, R^2_{\text{Adjusted}} = 0.12$) models explained 12% of the variance in automaticity scores.

Neither accuracy nor RT differed between groups, and group-by-block interaction effects were nonsignificant (all p 's > 0.05).

Sensitivity to outcome devaluation. Neither outcome-action knowledge ($F(2,80) = 0.27, p = 0.76$; see Fig. 2D) nor RT ($F(2,80) = 1.59, p = 0.21$) differed significantly between groups.

Slips of action. The slips-of-action test required participants to selectively respond to stimuli that were associated with valuable outcomes and withhold responses to those with devalued outcomes. All participants responded more frequently to valued outcomes ($\beta(\text{SE}) = 50.12(3.26), t(82) = 15.38, p < 0.0001$; Fig. 2F), and a nonsignificant group-by-outcome-value interaction indicated intact outcome sensitivity in both patient groups ($p = 0.87$). RTs did not differ between groups or by outcome value (all p 's > 0.05). Moreover, the mean difference in responding to valued versus devalued outcomes—a measure of relative goal-directed and habitual control—did not differ significantly between groups ($F(2,80) = 0.33, p = 0.72$). This would suggest that women with AN-BP, BN and control participants were similarly sensitive to devalued outcomes.

Test of disinhibition. Participants responded more frequently to valued stimuli relative to devalued stimuli on the control test ($\beta(\text{SE}) = -81.67(1.49), t(81) = -54.97, p < 0.0001$; Fig. 2H). However, both the main effect of group and a group-by-stimulus-value interaction effect on accuracy were nonsignificant, indicating comparable performance across groups (all p 's > 0.05). All main and interaction effects on RT were nonsignificant.

Self-report measures. Both AN-BP ($\beta(\text{SE}) = -6.76(30.08), p = 0.03$) and BN ($\beta(\text{SE}) = -7.49(2.69), p = 0.009$) groups scored significantly higher than controls on the COHS routine subscale; however, only women with BN reported greater automaticity ($\beta(\text{SE}) = -6.62(2.15), p = 0.003$). Patient status explained 7% and 8% of the variance in routine ($F(2, 81) = -4.17, p = 0.02, R^2_{\text{Adjusted}} = 0.07$) and automaticity scores ($F(2,81) = -4.79, p = 0.01, R^2_{\text{Adjusted}} = 0.08$), respectively.

Exploratory analysis of associations between ilPFC metabolites and the habit system

Associations between ilPFC NAA levels and automaticity differed between AN-BP and control groups (group-by-metabolite interaction; $\beta(\text{SE}) = -9.56(3.86), p = 0.015$), where lower NAA levels were related to greater automaticity in AN-BP (Fig. 3C). Similarly, the relationship between ilPFC glutamate and automaticity was moderated by group such that glutamate was negatively associated with automaticity in AN-BP ($\beta(\text{SE}) = -5.75(2.74), p = 0.039$; Fig. 3D). These associations remained significant when controlling for medication use (NAA $p = 0.017$; glutamate $p = 0.03$). All other main and interaction effects between metabolite concentrations, group and habitual biases were nonsignificant.

DISCUSSION

We used a multi-modal approach to examine neurochemical profiles and goal-directed versus habit systems in women with AN-BP, BN, and unaffected controls. Within a highly-controlled

inpatient setting, we replicated previous reports of reduced *myo*-inositol and NAA in individuals with AN [15–17], extending these findings to the binge-eating/purging diagnostic subtype. Women with BN did not show significant alterations in the metabolites of interest, which could suggest some diagnostic specificity. Moreover, self-reported habitual tendencies were greater in both patient groups relative to controls while instrumental learning task performance did not differ between groups. We discuss the implications of these results in the following sections.

Evaluating group differences in *myo*-inositol, NAA, and glutamate

Decreased *myo*-inositol concentrations in AN-BP could indicate reduced glial and/or myelin integrity. The observation of reduced *myo*-inositol in both iPFC and occipital voxels suggests that this difference extends beyond regions that have an established functional role in AN. *Myo*-inositol is considered a marker of glial integrity [55], and it has a key role both in lipid metabolism and myelin sheet structures [56]. Whereas demyelination has been associated with increased concentrations of free *myo*-inositol, the specific mechanisms underlying reductions in *myo*-inositol remain unknown. Glial damage or impairment has been suggested to underlie reduced *myo*-inositol in other psychiatric disorders, including schizophrenia and depression [57–59]. This mechanism may also generalize to AN as several diffusion-weighted imaging studies have reported increased radial diffusivity in affected individuals [60, 61]. Radial diffusivity serves as a measure of cross-fiber diffusion in WM tracts, and greater values indicate dysregulated myelination [62].

However, the combination of reductions in both *myo*-inositol and NAA may be further suggestive of altered axonal-glial signaling in AN-BP. NAA, commonly referenced as a marker of neuronal density, is synthesized from glutamate by mitochondrial enzymes in neuronal cell bodies and axons. The metabolite is then released into the extracellular matrix for uptake by oligodendrocyte cells that, in turn, produce the enzyme, aspartoacylase. Aspartoacylase degrades NAA to aspartate and acetate, and the resulting acetate may serve to maintain myelination [63, 64]. NAA therefore seems to have a central role in axonal-glial signaling, where reductions could reflect either reduced neuronal integrity, altered oligodendrocyte functioning or a combination of the two [12]. Indeed, in vivo structural MRI and postmortem studies report cortical thinning [65, 66] and reduced oligodendrocyte gene expression profiles [67], respectively, in acute AN, lending complementary support to the notion of altered axonal-glial signaling in the illness. Interestingly, as widespread reductions in cortical thickness rapidly normalize with weight restoration [65, 66], cortical pseudoatrophy in AN may partly reflect metabolic disturbances that arise during starvation [68]. Both prior evidence of recovery of medial frontal NAA in weight-restored AN patients [16] and our finding of reduced prefrontal and occipital NAA concentrations in AN-BP, but not BN, lends additional support to this theory.

Both patient groups had normal glutamate levels in the iPFC and occipital cortex. Reductions in glutamate or 'Glx' have previously been observed in the medial PFC, ACC, occipital cortex, and striatum in AN [16, 17], yet variable voxel placement, and assessment of relative versus absolute metabolite concentrations, complicates direct comparison across these studies. Additionally, as prior studies have primarily recruited women with restrictive AN, our results may suggest that reduced glutamate concentrations in AN are specific to the restrictive subtype. We encourage future studies to explore this possibility directly.

Examining group differences in habitual responding

We found inconsistent evidence of increased habitual tendencies in women with AN-BP and BN, with notable differences across self-report and task-based measures. Both patient groups reported

increased routines relative to the control group; however, automaticity scores were only increased in the BN group. We previously found that women with BN, but not AN-BP, in this cohort have impairments in proactive inhibition [2], and the present findings offer further evidence of distinct self-regulatory deficits across these two disorders. Nevertheless, nonsignificant group differences in slips-of-action task performance highlights outstanding challenges in relation to our understanding of dysregulated learning in eating disorders and its neural correlates. Self-report and task-based measures of related cognitive domains (e.g., self-control [69]) are known to have poor convergent validity, and laboratory-based assessments of goal-directed versus habitual control may be particularly challenging as habits are difficult to induce in humans [70]. For example, a prior study of patients with acute and recovered AN also failed to identify increased habitual responding on the slips-of-action task [71]. Moreover, because outcome devaluation tasks are thought to largely index (lack of) goal-directed control as opposed to greater habit learning [70], alternative approaches that move beyond simplistic dichotomies in cognitive (neuro)science will be central to refining knowledge of the processes underlying seemingly habitual behavior (reviewed by Collins and Cockburn [28]).

Exploratory associations between cerebral metabolites and habitual tendencies

Exploratory analyses linked reduced prefrontal NAA and glutamate with greater automaticity in AN-BP, yet task-based indices of the habit system were unrelated to the cerebral metabolites of interest. This dissociation might suggest that reductions in NAA and glutamate, and associated changes in neuronal integrity and neurotransmission, respectively, are more likely to be associated with habitual traits in AN-BP, as measured by the COHS, rather than more transient and specific habits induced by our task. Disrupted glutamatergic signaling has been associated with automaticity [32] and disinhibition [72] in patients with substance use and neurodegenerative disorders, respectively. In our cohort, the specificity of brain-behavior associations to women with AN-BP could relate to differences in the distribution of automaticity scores and iPFC metabolites between AN-BP and BN groups, where automaticity was significantly elevated in BN but not AN-BP. Replication efforts will be central to determining whether these differences reflect sampling variability, or if automaticity in BN perhaps relates to a different neurobiological mechanism(s). Moreover, although we provide novel evidence, linking iPFC metabolites to habitual biases in AN-BP, our findings were not corrected for multiple comparisons and thus should be interpreted cautiously. Since others report deficient goal-directed behavior in AN patients that persists following weight restoration [73], it will be critical to determine if the observed associations between NAA, glutamate and automaticity are specific to acute AN-BP, or if these might reflect a vulnerability to, or persisting consequence of, the illness.

Limitations and future directions

Despite notable strengths, some limitations of the present work should be considered. First, approximately 30% and 45% of women with BN and AN-BP, respectively, were taking prescribed psychotropic medication, which may affect glutamate turnover and glucose metabolism [74]. When controlling for current medication use in sensitivity analyses, we identified nominally significant reductions in NAA levels in the AN-BP group compared to controls, aligning with our original model, but reductions in *myo*-inositol were no longer statistically significant ($p = 0.052$). This would suggest that, while our NAA findings in AN-BP are at least partially robust to medication use, the same conclusion cannot be made for *myo*-inositol. However, as medication use likely covaries with other factors (e.g., illness severity, treatment access), further work is needed to precisely quantify the effects of

psychotropic medication on ^1H -MRS spectra, particularly in patients with chronic psychiatric illness [75]. Second, the use of single-voxel ^1H -MRS precluded assessment of the role of metabolites in brain activation or structure due to low spatial resolution. Alternative techniques, such as multi-voxel functional spectroscopy (e.g., [76]), would facilitate analysis of temporal associations between metabolite concentrations, functional activity and cortical morphometry. Third, we were unable to quantify other neurotransmitters, such as GABA, that may have functional relevance to eating disorders but cannot be reliably estimated at 3T. As such, future ultra-high-field ^1H -MRS studies of eating disorders are warranted.

CONCLUSIONS

In summary, these findings lend novel insight into neural chemistry of AN-BP and BN, suggesting that these illnesses show distinct neurobiological profiles despite shared symptomatology. Our results support the role of the right iIPFC in habitual behavior, specifically in AN-BP, yet assessment of habit learning remains challenging due to relatively poor convergent validity across measures. Future studies should integrate ^1H -MRS and task-based functional neuroimaging to further elucidate associations between cerebral metabolites and cognition in eating disorders.

REFERENCES

- American Psychiatric Association. Diagnostic And Statistical Manual Of Mental Disorders. 5th edn. Washington, D.C.; 2013.
- Westwater ML, Mancini F, Gorka AX, Shapleske J, Serfontein J, Grillon C, et al. Prefrontal responses during proactive and reactive inhibition are differentially impacted by stress in anorexia and bulimia nervosa. *J Neurosci*. 2021. <https://doi.org/10.1523/jneurosci.2853-20.2021>.
- Marsh R, Horga G, Wang Z, Wang P, Klahr KW, Berner LA, et al. An fMRI study of self-regulatory control and conflict resolution in adolescents with bulimia nervosa. *Am J Psychiatry*. 2011;168:1210–20.
- Kaye WH, Wierenga CE, Bischoff-Grethe A, Berner LA, Ely AV, Bailer UF, et al. Neural insensitivity to the effects of hunger in women remitted from anorexia nervosa. *Am J Psychiatry*. 2020;177:601–10.
- Berner LA, Simmons AN, Wierenga CE, Bischoff-Grethe A, Paulus MP, Bailer UF, et al. Altered interoceptive activation before, during, and after aversive breathing load in women remitted from anorexia nervosa. *Psychol Med*. 2018;48:142–54.
- Cyr M, Wang Z, Tau GZ, Zhao G, Friedl E, Stefan M, et al. Reward-based spatial learning in teens with bulimia nervosa. *J Am Acad Child Adolesc Psychiatry*. 2016;55:962–971.e3.
- Culbert KM, Racine SE, Klump KL. Hormonal factors and disturbances in eating disorders. *Curr Psychiatry Rep*. 2016;18:65.
- Misra M, Klibanski A. Endocrine consequences of anorexia nervosa. *Lancet Diabetes Endocrinol*. 2014;2:581–92.
- Soares DP, Law M. Magnetic resonance spectroscopy of the brain: review of metabolites and clinical applications. *Clin Radiol*. 2009;64:12–21.
- Maier S, Nickel K, Perlov E, Kukies A, Zeeck A, Tebartz van Elst L, et al. Insular cell integrity markers linked to weight concern in anorexia nervosa—an MR-spectroscopy study. *J Clin Med*. 2020;9:1292.
- Schlemmer H-P, Möckel R, Marcus A, Hentschel F, Göpel C, Becker G, et al. Proton magnetic resonance spectroscopy in acute, juvenile anorexia nervosa. *Psychiatry Res*. 1998;82:171–9.
- Moffett JR, Ross B, Arun P, Madhavarao CN, Namboodiri AMA. N-Acetylaspartate in the CNS: from neurodiagnostics to neurobiology. *Prog Neurobiol*. 2007;81:89–131.
- Paslakis G, Träber F, Roberz J, Block W, Jessen F. N-acetyl-aspartate (NAA) as a correlate of pharmacological treatment in psychiatric disorders: a systematic review. *Eur Neuropsychopharmacol*. 2014;24:1659–75.
- Brand A, Richter-Landsberg C, Leibfritz D. Multinuclear NMR studies on the energy metabolism of glial and neuronal cells. *Dev Neurosci*. 1993;15:289–98.
- Ohrmann P, Kersting A, Suslow T, Lalee-Mentzel J, Donges US, Fiebich M, et al. Proton magnetic resonance spectroscopy in anorexia nervosa: correlations with cognition. *Neuroreport*. 2004;15:549–53.
- Castro-Fornieles J, Bargalló N, Lázaro L, Andrés S, Falcon C, Plana MT, et al. Adolescent anorexia nervosa: cross-sectional and follow-up frontal gray matter disturbances detected with proton magnetic resonance spectroscopy. *J Psychiatry Res*. 2007;41:952–8.
- Godlewska BR, Pike A, Sharpley AL, Ayton A, Park RJ, Cowen PJ, et al. Brain glutamate in anorexia nervosa: a magnetic resonance spectroscopy case control study at 7 Tesla. *Psychopharmacology*. 2017;234:421–6.
- Joos AAB, Perlov E, Büchert M, Hartmann A, Saum B, Glauche V, et al. Magnetic resonance spectroscopy of the anterior cingulate cortex in eating disorders. *Psychiatry Res Neuroimaging*. 2011;191:196–200.
- Blasel S, Pilatus U, Magerkurth J, von Stauffenberg M, Vronski D, Mueller M, et al. Metabolic gray matter changes of adolescents with anorexia nervosa in combined MR proton and phosphorus spectroscopy. *Neuroradiology*. 2012;54:753–64.
- Roser W, Bubl R, Buerger D, Seelig J, Radue EW, Rost B. Metabolic changes in the brain of patients with anorexia and bulimia nervosa as detected by proton magnetic resonance spectroscopy. *Int J Eat Disord*. 1999;26:119–36.
- Berner LA, Marsh R. Frontostriatal circuits and the development of bulimia nervosa. *Front Behav Neurosci*. 2014;8:395.
- Voon V, Derbyshire K, Rück C, Irvine MA, Worbe Y, Enander J, et al. Disorders of compulsivity: a common bias towards learning habits. *Mol Psychiatry*. 2015;20:345–52.
- Uniacke B, Timothy Walsh B, Foerde K, Steinglass J. The role of habits in anorexia nervosa: where we are and where to go from here? *Curr Psychiatry Rep*. 2018;20:61.
- Maia TV, Frank MJ. From reinforcement learning models to psychiatric and neurological disorders. *Nat Neurosci*. 2011;14:154–62.
- Marteau TM, Hollands GJ, Fletcher PC. Changing human behavior to prevent disease: the importance of targeting automatic processes. *Science*. 2012;337:1492–5.
- Reiter AMF, Heinze H-J, Schlagenhaut F, Deserno L. Impaired flexible reward-based decision-making in binge eating disorder: evidence from computational modeling and functional neuroimaging. *Neuropsychopharmacology*. 2017;42:628–37.
- Daw ND, Niv Y, Dayan P. Uncertainty-based competition between prefrontal and dorsolateral striatal systems for behavioral control. *Nat Neurosci*. 2005;8:1704–11.
- Collins AGE, Cockburn J. Beyond dichotomies in reinforcement learning. *Nat Rev Neurosci*. 2020;21:576–86.
- Gillan CM, Otto AR, Phelps EA, Daw ND. Model-based learning protects against forming habits. *Cogn Affect Behav Neurosci*. 2015;15:523–36.
- de Wit S, Corlett PR, Aitken MR, Dickinson A, Fletcher PC. Differential engagement of the ventromedial prefrontal cortex by goal-directed and habitual behavior toward food pictures in humans. *J Neurosci*. 2009;29:11330–8.
- Robbins TW, Gillan CM, Smith DG, de Wit S, Ersche KD. Neurocognitive endophenotypes of impulsivity and compulsivity: towards dimensional psychiatry. *Trends Cogn Sci*. 2012;16:81–91.
- Ersche KD, Lim TV, Murley AG, Rua C, Vaghi MM, White TL, et al. Reduced glutamate turnover in the putamen is linked with automatic habits in human cocaine addiction. *Biol Psychiatry*. 2020. <https://doi.org/10.1016/j.biopsych.2020.12.009>.
- Wan Lee S, Shimojo S, O'Doherty JP. Neural computations underlying arbitration between model-based and model-free learning. *Neuron*. 2014;81:687–99.
- Bogdanov M, Timmermann JE, Gläscher J, Hummel FC, Schwabe L. Causal role of the inferolateral prefrontal cortex in balancing goal-directed and habitual control of behavior. *Sci Rep*. 2018;8:9382.
- de Wit S, Niry D, Wariyar R, Aitken MRF, Dickinson A. Stimulus-outcome interactions during instrumental discrimination learning by rats and humans. *J Exp Psychol Anim Behav Process*. 2007;33:1–11.
- Ersche KD, Gillan CM, Jones PS, Williams GB, Ward LHE, Luijten M, et al. Carrots and sticks fail to change behavior in cocaine addiction. *Science*. 2016;352:1468–71.
- Ersche KD, Lim T-V, Ward LHE, Robbins TW, Stoeh J. Creature of Habit: a self-report measure of habitual routines and automatic tendencies in everyday life. *Pers Individ Dif*. 2017;116:73–85.
- Heatherton TF, Kozlowski LT, Frecker RC, Fagerström KO. The fagerström test for nicotine dependence: a revision of the fagerström tolerance questionnaire. *Br J Addict*. 1991;86:1119–27.
- Westwater ML, Mancini F, Shapleske J, Serfontein J, Ernst M, Ziauddeen H, et al. Dissociable hormonal profiles for psychopathology and stress in anorexia and bulimia nervosa. *Psychol Med*. 2020;51:1–11.
- First MB, Williams JBW, Karg RS, Spitzer RL. Structured clinical interview for DSM-5 disorders—Clinician version (SCID-5-CV). Arlington, VA: American Psychiatric Association; 2015.
- Cooper Z, Fairburn C. The eating disorder examination: a semi-structured interview for the assessment of the specific psychopathology of eating disorders. *Int J Eat Disord*. 1987;6:1–8.
- Deelchand DK, Adanyeguh IM, Emir UE, Nguyen TM, Valabregue R, Henry PG, et al. Two-site reproducibility of cerebellar and brainstem neurochemical profiles with short-echo, single-voxel MRS at 3T. *Magn Reson Med*. 2015;73:1718–25.
- Marjańska M, Auerbach EJ, Valabregue R, Van de Moortele PF, Adriany G, Garwood M. Localized ^1H NMR spectroscopy in different regions of human brain

- in vivo at 7T: T₂ relaxation times and concentrations of cerebral metabolites. *NMR Biomed.* 2012;25:332–9.
44. Öz G, Tkáč I. Short-echo, single-shot, full-intensity proton magnetic resonance spectroscopy for neurochemical profiling at 4T: validation in the cerebellum and brainstem. *Magn Reson Med.* 2011;65:901–10.
 45. Scheenen TWJ, Klomp DWJ, Wijnen JP, Heerschap A. Short echo time 1H-MRSI of the human brain at 3T with minimal chemical shift displacement errors using adiabatic refocusing pulses. *Magn Reson Med.* 2008;59:1–6.
 46. Tkáč I, Starčuk Z, Choi IY, Gruetter R. In vivo 1H NMR spectroscopy of rat brain at 1 ms echo time. *Magn Reson Med.* 1999;41:649–56.
 47. Provencher SW. Estimation of metabolite concentrations from localized in vivo proton NMR spectra. *Magn Reson Med.* 1993;30:672–9.
 48. Provencher SW. Automatic quantitation of localized in vivo 1H spectra with LCMoDel. *NMR Biomed.* 2001;14:260–4.
 49. Wilson M, Andronesi O, Barker PB, Bartha R, Bizzi A, Bolan PJ, et al. Methodological consensus on clinical proton MRS of the brain: Review and recommendations. *Magn Reson Med.* 2019;82:527–50.
 50. Lee H, Caparelli E, Li H, Mandal A, Smith SD, Zhang S, et al. Computerized MRS voxel registration and partial volume effects in single voxel 1H-MRS. *Magn Reson Imaging.* 2013;31:1197–205.
 51. Quadrelli S, Mountford C, Ramadan S. Hitchhiker'S guide to voxel segmentation for partial volume correction of in vivo magnetic resonance spectroscopy. *Magn Reson Insights.* 2016;9:MRIS32903.
 52. Egerton A, Murphy A, Donocik J, Anton A, Barker GJ, Collier T, et al. Dopamine and glutamate in antipsychotic-responsive compared with antipsychotic-nonresponsive psychosis: A Multicenter Positron Emission Tomography and Magnetic Resonance Spectroscopy Study (STRATA). *Schizophr Bull.* 2020. <https://doi.org/10.1093/schbul/sbaa128>.
 53. Pinheiro J, Bates D, DebRoy S, Sarkar D, Team RC. nlme: Linear And Nonlinear Mixed Effects Models. R Packag Version 31-128. 2016. <http://cran.r-project.org/package=nlme>.
 54. Kaminski J, Mascarell-Maricic L, Fukuda Y, Katthagen T, Heinz A, Schlagenhaut F. Glutamate in the dorsolateral prefrontal cortex in patients with schizophrenia: a meta-analysis of 1H-magnetic resonance spectroscopy studies. *Biol Psychiatry.* 2021;89:270–7.
 55. Castillo M, Kwock L, Scatiff J, Mukherji SK. Proton MR spectroscopy in neoplastic and non-neoplastic brain disorders. *Magn Reson Imaging Clin N Am.* 1998;6:1–20.
 56. Haris M, Cai K, Singh A, Hariharan H, Reddy R. In vivo mapping of brain myo-inositol. *Neuroimage* 2011;54:2079–85.
 57. Chiappelli J, Rowland LM, Wijtenburg SA, Muellerklein F, Tagamets M, McMahon RP, et al. Evaluation of myo-inositol as a potential biomarker for depression in schizophrenia. *Neuropsychopharmacology* 2015;40:2157–64.
 58. Shirayama Y, Takahashi M, Osone F, Hara A, Okubo T. Myo-inositol, glutamate, and glutamine in the prefrontal cortex, hippocampus, and amygdala in major depression. *Biol Psychiatry Cogn Neurosci Neuroimaging.* 2017;2:196–204.
 59. Xu H, Zhang H, Zhang J, Huang Q, Shen Z, Wu R. Evaluation of neuron-glia integrity by in vivo proton magnetic resonance spectroscopy: Implications for psychiatric disorders. *Neurosci Biobehav Rev.* 2016;71:563–77.
 60. Via E, Zalesky A, Sánchez I, Forcano L, Harrison BJ, Pujol J, et al. Disruption of brain white matter microstructure in women with anorexia nervosa. *J Psychiatry Neurosci.* 2014;39:367–75.
 61. Phillipou A, Carruthers SP, Di Biase MA, Zalesky A, Abel LA, Castle DJ, et al. White matter microstructure in anorexia nervosa. *Hum Brain Mapp.* 2018;39:4385–92.
 62. Song SK, Sun SW, Ramsbottom MJ, Chang C, Russell J, Cross AH. Demyelination revealed through MRI as increased radial (but unchanged axial) diffusion of water. *Neuroimage* 2002;17:1429–36.
 63. Chakraborty G, Mekala P, Yahya D, Wu G, Ledeen RW. Intraneuronal N-acetylaspartate supplies acetyl groups for myelin lipid synthesis: evidence for myelin-associated aspartoacylase. *J Neurochem.* 2001;78:736–45.
 64. Nordengen K, Heuser C, Rinholm JE, Matalon R, Gundersen V. Localisation of N-acetylaspartate in oligodendrocytes/myelin. *Brain Struct Funct.* 2015;220:899–917.
 65. Bernardoni F, King JA, Geisler D, Stein E, Jajte C, Nätsch D, et al. Weight restoration therapy rapidly reverses cortical thinning in anorexia nervosa: a longitudinal study. *Neuroimage* 2016;130:214–22.
 66. King JA, Geisler D, Ritschel F, Boehm I, Seidel M, Roschinski B, et al. Global cortical thinning in acute anorexia nervosa normalizes following long-term weight restoration. *Biol Psychiatry.* 2015;77:624–32.
 67. Miles AE, Kaplan AS, French L, Voineskos AN. White matter microstructure in women with acute and remitted anorexia nervosa: an exploratory neuroimaging study. *Brain Imaging Behav.* 2020;14:2429–37.
 68. King JA, Frank GKW, Thompson PM, Ehrlich S. Structural neuroimaging of anorexia nervosa: future directions in the quest for mechanisms underlying dynamic alterations. *Biol Psychiatry.* 2017. <https://doi.org/10.1016/j.biopsych.2017.08.011>.
 69. Duckworth AL, Kern ML. A meta-analysis of the convergent validity of self-control measures. *J Res Pers.* 2011;45:259–68.
 70. de Wit S, Kindt M, Knot SL, Verhoeven AAC, Robbins TW, Gasull-Camos J, et al. Shifting the balance between goals and habits: five failures in experimental habit induction. *J Exp Psychol Gen.* 2018;147:1043–65.
 71. Godier LR, de Wit S, Pinto A, Steinglass JE, Greene AL, Scaife J, et al. An investigation of habit learning in Anorexia Nervosa. *Psychiatry Res.* 2016;244:214–22.
 72. Murley AG, Rouse MA, Simon Jones P, Ye R, Hezemans FH, O'Callaghan C, et al. GABA and glutamate deficits from frontotemporal lobar degeneration are associated with disinhibition. *Brain* 2021;143:3449–62.
 73. Foerde K, Daw ND, Ruffin T, Walsh BT, Shohamy D, Steinglass JE. Deficient goal-directed control in a population characterized by extreme goal pursuit. *J Cogn Neurosci.* 2021;33:463–81.
 74. Hertz L, Rothman DL, Li B, Peng L. Chronic ssri stimulation of astrocytic 5-HT2B receptors change multiple gene expressions/editings and metabolism of glutamate, glucose and glycogen: a potential paradigm shift. *Front Behav Neurosci.* 2015;9:25.
 75. Rosenberg DR, MacMaster FP, Keshavan MS, Fitzgerald KD, Stewart CM, Moore GJ. Decrease in caudate glutamatergic concentrations in pediatric obsessive-compulsive disorder patients taking paroxetine. *J Am Acad Child Adolesc Psychiatry.* 2000;39:1096–103.
 76. Ip IB, Berrington A, Hess AT, Parker AJ, Emir UE, Bridge H. Combined fMRI-MRS acquires simultaneous glutamate and BOLD-fMRI signals in the human brain. *Neuroimage* 2017;155:113–9.
 77. Truong V, Duncan NW. Suggestions for improving the visualization of magnetic resonance spectroscopy voxels and spectra. *R. Soc. Open Sci.* 2020;7:200600. <https://doi.org/10.1098/rsos.200600>.
 78. Abraham A, Pedregosa F, Eickenberg M, Gervais P, Mueller A, Kossaifi J, et al. Machine learning for neuroimaging with scikit-learn. *Front Neuroinform.* 2014;8:14.

ACKNOWLEDGEMENTS

The authors thank the participants for their time and dedication to the study; the nursing staff and radiographers for assisting the study protocol; and Dr. Dinesh Deelchand for sharing code for the MRS voxel segmentation. They also wish to thank the Beat eating disorder charity for advertising the study. Funding was provided by the Bernard Wolfe Health Neuroscience Fund to PCF and HZ and a Wellcome Trust Investigator Award to PCF (Reference No. 206368/Z/17/Z). MLW was supported through the NIH-Oxford-Cambridge Scholars Program and a Cambridge Trust fellowship. AGM was supported by a Holt Fellowship. The Wellcome Trust/NIHR Clinical and Translational Research Facilities and the Wolfson Brain Imaging Centre provided equipment and support staff for the study. This research was supported by the NIHR Cambridge Biomedical Research Centre (BRC-1215-20014). The views expressed are those of the author(s) and not necessarily those of the NIHR or the Department of Health and Social Care.

AUTHOR CONTRIBUTIONS

MLW, HZ, and PCF designed the study; MLW and HZ performed the research; AGM, KMJD, and TAC contributed unpublished reagents/analytic tools; MLW analyzed the data with support from AGM and KMJD; MLW wrote the manuscript. All authors critically revised the manuscript for intellectual content.

COMPETING INTERESTS

The authors declare no competing interests.

ADDITIONAL INFORMATION

Supplementary information The online version contains supplementary material available at <https://doi.org/10.1038/s41398-022-01872-7>.

Correspondence and requests for materials should be addressed to Margaret L. Westwater.

Reprints and permission information is available at <http://www.nature.com/reprints>

Publisher's note Springer Nature remains neutral with regard to jurisdictional claims in published maps and institutional affiliations.



Open Access This article is licensed under a Creative Commons Attribution 4.0 International License, which permits use, sharing, adaptation, distribution and reproduction in any medium or format, as long as you give appropriate credit to the original author(s) and the source, provide a link to the Creative Commons license, and indicate if changes were made. The images or other third party material in this article are included in the article's Creative Commons license, unless indicated otherwise in a credit line to the material. If material is not included in the article's Creative Commons license and your intended use is not permitted by statutory regulation or exceeds the permitted use, you will need to obtain permission directly from the copyright holder. To view a copy of this license, visit <http://creativecommons.org/licenses/by/4.0/>.

© The Author(s) 2022