



## King's Research Portal

DOI:

[10.1186/s40814-022-01021-3](https://doi.org/10.1186/s40814-022-01021-3)

[Link to publication record in King's Research Portal](#)

*Citation for published version (APA):*

Quotah, O. F., Nishku, G., Hunt, J., Seed, P. T., Gill, C., Brockbank, A., Fafowora, O., Vasiloudi, I., Olusoga, O., Cheek, E., Phillips, J., Nowak, K. G., Poston, L., White, S., & Flynn, A. C. (2022). Prevention of gestational diabetes in pregnant women with obesity: protocol for a pilot randomised controlled trial. *Pilot and Feasibility Studies*, 8(1), 70. [70]. <https://doi.org/10.1186/s40814-022-01021-3>

### **Citing this paper**

Please note that where the full-text provided on King's Research Portal is the Author Accepted Manuscript or Post-Print version this may differ from the final Published version. If citing, it is advised that you check and use the publisher's definitive version for pagination, volume/issue, and date of publication details. And where the final published version is provided on the Research Portal, if citing you are again advised to check the publisher's website for any subsequent corrections.

### **General rights**

Copyright and moral rights for the publications made accessible in the Research Portal are retained by the authors and/or other copyright owners and it is a condition of accessing publications that users recognize and abide by the legal requirements associated with these rights.

- Users may download and print one copy of any publication from the Research Portal for the purpose of private study or research.
- You may not further distribute the material or use it for any profit-making activity or commercial gain
- You may freely distribute the URL identifying the publication in the Research Portal

### **Take down policy**

If you believe that this document breaches copyright please contact [librarypure@kcl.ac.uk](mailto:librarypure@kcl.ac.uk) providing details, and we will remove access to the work immediately and investigate your claim.

STUDY PROTOCOL

Open Access



# Prevention of gestational diabetes in pregnant women with obesity: protocol for a pilot randomised controlled trial

Ola F. Quotah<sup>1,2</sup>, Glen Nishku<sup>1</sup>, Jessamine Hunt<sup>1</sup>, Paul T. Seed<sup>1</sup>, Carolyn Gill<sup>1</sup>, Anna Brockbank<sup>1</sup>, Omoyele Fafowora<sup>1</sup>, Ilektra Vasiloudi<sup>1</sup>, Opeoluwa Olusoga<sup>1</sup>, Ellie Cheek<sup>1</sup>, Janelle Phillips<sup>1</sup>, Katarzyna G. Nowak<sup>1</sup>, Lucilla Poston<sup>1</sup>, Sara L. White<sup>1†</sup> and Angela C. Flynn<sup>1,3\*†</sup>

## Abstract

**Background:** Obesity in pregnancy increases the risk of gestational diabetes mellitus (GDM) and associated adverse outcomes. Despite metabolic differences, all pregnant women with obesity are considered to have the same risk of developing GDM. Improved risk stratification is required to enable targeted intervention in women with obesity who would benefit the most. The aim of this study is to identify pregnant women with obesity at higher risk of developing GDM and, in a pilot randomised controlled trial (RCT), test feasibility and assess the efficacy of a lifestyle intervention and/or metformin to improve glycaemic control.

**Methods:** Women aged 18 years or older with a singleton pregnancy and body mass index (BMI)  $\geq 30\text{kg/m}^2$  will be recruited from one maternity unit in London, UK. The risk of GDM will be assessed using a multivariable GDM prediction model combining maternal age, mid-arm circumference, systolic blood pressure, glucose, triglycerides and HbA1c. Women identified at a higher risk of developing GDM will be randomly allocated to one of two intervention groups (lifestyle advice with or without metformin) or standard antenatal care. The primary feasibility outcomes are study recruitment, retention rate and intervention adherence and to collect information needed for the sample size calculation for the definitive trial. A process evaluation will assess the acceptability of study processes and procedures to women. Secondary patient-centred outcomes include a reduction in mean glucose/24h of 0.5mmol/l as assessed by continuous glucose monitoring and changes in a targeted maternal metabolome, dietary intake and physical activity. A sample of 60 high-risk women is required.

**Discussion:** Early risk stratification of GDM in pregnant women with obesity and targeted intervention using lifestyle advice with or without metformin could improve glucose tolerance compared to standard antenatal care. The results from this feasibility study will inform a larger adequately powered RCT should the intervention show trends for potential effectiveness.

**Trial registration:** This study has been approved by the NHS Research Ethics Committee (UK IRAS integrated research application system; reference 18/LO/1500). EudraCT number [2018-00003-16](https://clinicaltrials.gov/ct2/show/study/2018-00003-16).

\*Correspondence: [angela.flynn@kcl.ac.uk](mailto:angela.flynn@kcl.ac.uk)

<sup>†</sup>Sara L. White and Angela C. Flynn contributed equally to this work.

<sup>3</sup> Department of Nutritional Sciences, School of Life Course Sciences, King's College London, Franklin-Wilkins Building, 150 Stamford Street, London SE1 9NH, UK

Full list of author information is available at the end of the article



© The Author(s) 2022. **Open Access** This article is licensed under a Creative Commons Attribution 4.0 International License, which permits use, sharing, adaptation, distribution and reproduction in any medium or format, as long as you give appropriate credit to the original author(s) and the source, provide a link to the Creative Commons licence, and indicate if changes were made. The images or other third party material in this article are included in the article's Creative Commons licence, unless indicated otherwise in a credit line to the material. If material is not included in the article's Creative Commons licence and your intended use is not permitted by statutory regulation or exceeds the permitted use, you will need to obtain permission directly from the copyright holder. To view a copy of this licence, visit <http://creativecommons.org/licenses/by/4.0/>. The Creative Commons Public Domain Dedication waiver (<http://creativecommons.org/publicdomain/zero/1.0/>) applies to the data made available in this article, unless otherwise stated in a credit line to the data.

**Keywords:** Gestational diabetes, Maternal obesity, Lifestyle intervention, Metformin

## Introduction

Global estimates suggest that over 21% of women will be obese by 2025 [1]. In the UK, over 20% of women present with obesity at their first antenatal visit [2]. Obesity adversely affects reproductive health [3]. Pregnant women with obesity have a higher risk of developing most pregnancy complications, including gestational diabetes mellitus (GDM) [4, 5] and women with GDM are more likely to develop hypertension and pre-eclampsia during pregnancy [6, 7] as well as cardiovascular disease and type 2 diabetes later in life [8–10]. Infants born to mothers with GDM are more likely to be born large-for-gestational age (LGA) and macrosomic, increasing the risk of complications at delivery, including shoulder dystocia [7, 11]. Furthermore, offspring of GDM mothers have a higher risk of being overweight or obese [12], developing diabetes [13, 14] or metabolic disease [15, 16] later in life.

UK guidelines recommend that all pregnant women with obesity undergo an oral glucose tolerance test (OGTT) at 24–28 weeks' gestation to detect GDM and introduce treatment [17]. Evidence suggests, however, that excessive fetal growth precedes the time of diagnosis in obese women [18]. Furthermore, marked abnormalities in the metabolic profiles of obese women who develop GDM may occur at least 10 weeks before conventional diagnosis [19, 20].

Several randomised controlled trials (RCTs) have attempted to prevent adverse outcomes in obese women; diet and physical activity [21] or pharmacological interventions [22–24] have overall not been effective. This has shifted the focus to targeted intervention for those individuals identified at greatest risk and increasing evidence suggests that this approach might be beneficial. The RADIEL RCT of a lifestyle intervention in 293 Finnish pregnant women, of whom 30% had previous GDM, demonstrated a reduction in GDM from 21.6 to 13.9% [25]. This observation was further supported by a UK multicentre randomised trial (ESTEEM) of a Mediterranean-style diet in women with risk factors including obesity, chronic hypertension or hypertriglyceridaemia, in which a reduction in GDM of 35% in the intervention group was achieved [26].

Although several studies describe tools developed to predict GDM in weight heterogeneous women [27–33], specific approaches for pregnant women with obesity are rare. At present, all pregnant women with a

body mass index (BMI)  $\geq 30$  kg/m<sup>2</sup> are considered at high risk of developing GDM, although the majority do not develop the condition [34]. Our prediction tool for GDM was constructed using a range of biochemical and clinical factors in early pregnancy obtained in a cohort of 1303 obese pregnant women who took part in the UK Pregnancies Better Eating and Activity Trial (UPBEAT) [34]. The tool was developed using the clinical variables maternal age, blood pressure and mid-arm circumference and the biomarkers HbA1c, glucose and triglycerides. At a threshold of  $\geq 35\%$  risk, the tool identifies in early pregnancy obese pregnant women with a higher risk of developing GDM (1 in 2 chance) when diagnosed using The International Association of Diabetes and Pregnancy Study Groups (IADPSG) criteria and thereby those who might benefit most from an intervention [35].

In this, the next step, a pilot study will be undertaken in which pregnant women with obesity and at higher risk of developing GDM as identified using the prediction tool will be randomised to one of two interventions designed to improve glucose tolerance or to standard antenatal care.

## Study objectives

The objectives of the UK Pregnancies Better Eating and Activity Trial-Taking It Forward (UPBEAT-TIF) study are:

1. *Primary feasibility outcomes:* To evaluate the feasibility (recruitment, retention, intervention adherence, determination of sample size) and acceptability of the UPBEAT-TIF intervention in women who are identified as having a higher risk of developing GDM
2. *Secondary patient-centred objectives*
  - To assess in pregnant women with obesity, identified as high risk for GDM, the efficacy of (a) lifestyle advice (diet and physical activity) and (b) metformin treatment plus lifestyle advice, to improve maternal glycaemic control, when compared with (c) standard care
  - To determine the impact of each intervention on a targeted maternal metabolome
  - To examine the effect of each intervention on dietary intake and physical activity

## Methods and analysis

This protocol paper is written in accordance with the Standard Protocol Items: Recommendations for Interventional Trials (SPIRIT) checklist [36].

This study will be a single-centre, open-label, randomised controlled trial. NHS Research Ethics Committee approval has been obtained (UK IRAS integrated research application system; reference 18/LO/1500). Women will be recruited in one centre, from the antenatal clinics of Guy's and St Thomas' NHS Foundation Trust, London, UK (Fig. 1). Pregnant women with obesity will be invited to be screened for risk of developing GDM at their routine nuchal ultrasound scan appointment at St Thomas' Hospital. Women will be eligible to take part in the study if they meet the following criteria:

- Over 18 years
- BMI  $\geq 30\text{kg/m}^2$
- Higher risk of GDM as identified by risk assessment at screening
- Singleton pregnancy
- Gestation 11–14<sup>+6</sup> weeks' at the time of screening
- Willing and able to give written informed consent

Women will be excluded if they meet the following criteria:

- Women identified as being at background risk of GDM at screening
- Taking metformin or any medications that affect insulin sensitivity
- HbA1c  $\geq 6.5\%$  at the time of screening
- Pre-existing medical conditions including diabetes, thyroid disease, coeliac disease, hypertension, sickle cell, systemic lupus erythematosus, antiphospholipid syndrome, thalassaemia and current psychosis
- Past bariatric surgery
- Multiple pregnancy
- Insufficient understanding of the trial
- Contraindications to metformin
- Participation in another investigational medicinal product trial at the time of screening

## Study entry

### 11–14<sup>+6</sup> weeks' gestation appointment: screening

Eligible women will be contacted by a clinical research practitioner/assistant and offered information about the study before their routine nuchal ultrasound scan appointment in the antenatal clinic of St Thomas' Hospital. Eligible women will also be approached in the

antenatal clinic, given information about the study and offered the prediction test to identify the risk of later GDM development. Following informed written consent, weight will be measured and a blood sample taken at the same time as routine blood sampling for measurement of HbA1c, glucose and triglycerides. Clinical risk factors will also be recorded (age, blood pressure, mid-arm circumference) for risk assessment. Risk will be assessed by the algorithm previously described [35].

All women screened will be contacted by telephone. Women identified as being at background risk of developing GDM will be managed according to clinical guidelines and will not enter the trial. Women identified as being at a higher risk will be invited to be randomised into an antenatal programme of lifestyle advice, lifestyle advice plus metformin treatment or standard antenatal care.

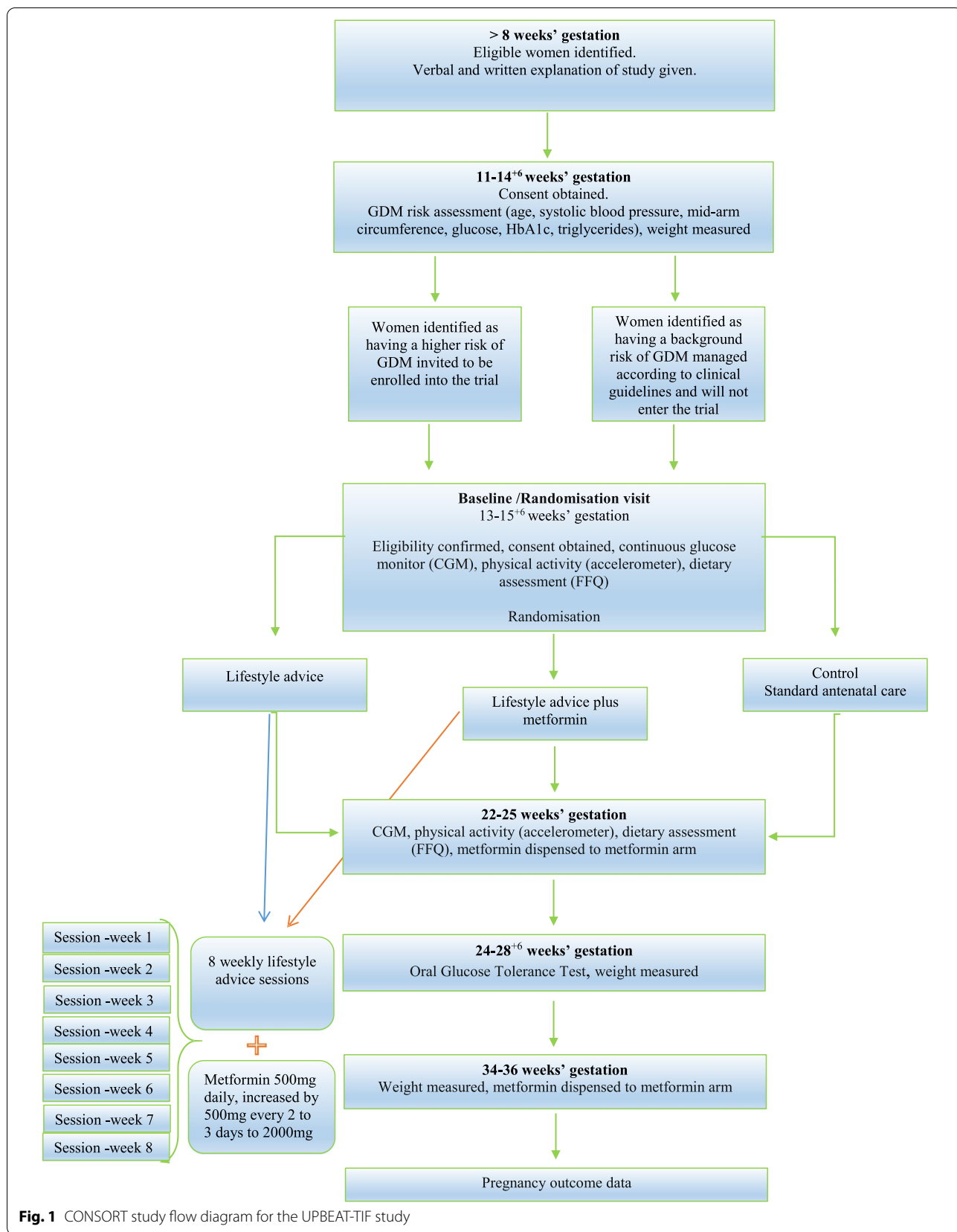
### 13–15<sup>+6</sup> weeks' gestation appointment: baseline and randomisation

At the first appointment, informed consent will be obtained by the chief investigator from women to be randomised into the trial. All participants will be fitted with a glucose sensor (Dexcom G6) to be worn for 7–10 days. The sensors are small, easy to wear, waterproof devices which require no finger prick calibration. The sensors will be applied to the back of the upper arm or abdomen of the participant and activated in blinded mode. To assess dietary intake, a semi-quantitative food frequency questionnaire (FFQ) will be administered to evaluate dietary glycaemic load (GL), glycaemic index (GI), saturated fat and other dietary variables [34]. Physical activity will be assessed by Axivity accelerometer AX3 (<https://axivity.com/product/ax3>).

Following the baseline assessment, randomisation will be performed electronically by the research team via a secure online-based data management platform (MedSciNet™) in order to conceal the sequence until interventions are assigned. Women will be randomised (1:1:1) into three groups:

- a. Lifestyle advice
- b. Lifestyle advice plus metformin
- c. Standard antenatal care

The randomisation schedule will be minimised according to ethnicity (Black, White, Asian, Other), BMI (30–34.9kg/m<sup>2</sup>, 35–39.9kg/m<sup>2</sup>,  $\geq 40\text{kg/m}^2$ ), parity (nulliparous/multiparous) and age. Participants will be allocated sequential study numbers regardless of allocation to the intervention or standard care group. Due to the nature of the study design, it will not be possible to blind participants or research staff to the randomisation arm.



**Fig. 1** CONSORT study flow diagram for the UPBEAT-TIF study

## Intervention

**Lifestyle advice** Participants allocated to the lifestyle advice or lifestyle advice plus metformin arms will receive the intervention. The dietary intervention, delivered by a nutritionist, focuses on reducing GL and saturated fat intake using a regime previously shown to be effective in changing diet in 'all risk' obese pregnant women [34]. The dietary component of the intervention will aim to promote a healthier pattern of eating without restricting energy intake. The dietary advice will be tailored according to the woman's habitual diet and cultural preference.

To decrease GL, participants will be encouraged to exchange starchy foods with a medium to high GI for those with a lower GI and reduce the consumption of sugar-sweetened beverages including fruit juice. Specific dietary goals will be provided for each participant that focus on differentiating between carbohydrate-rich foods. This advice will include replacing high GI breads with lower GI breads such as granary/wholegrain/multigrain bread, sourdough and rye; replacing high GI breakfast cereals with lower GI varieties such as porridge, oat-based cereals and no-added-sugar muesli; and encouraging consumption of lower GI grains like basmati rice, pearl barley, cracked wheat (bulgur), quinoa and pasta. To reduce saturated fat intake, participants will be encouraged to swap oils and spreads high in saturated fats (butter, lard, ghee) for those high in mono- and polyunsaturated fats (olive, sunflower); swap meat high in saturated fat (fatty meats, processed meat and meat products) for lean red meat, chicken and fish; and swap higher fat dairy foods (milk, cheese, yogurt) for lower fat varieties.

The physical activity component of the intervention will focus on a safe physical activity regime using the UPBEAT strategy which was shown to be successful in improving physical activity in 'all risk' pregnant women with obesity [34]. The advice aims to increase incremental walking and daily step count at a moderate intensity, being more active in daily life and reducing sedentary behaviour (sitting and screen time).

**Metformin** In participants randomised to the lifestyle intervention plus metformin arm, metformin treatment will be initiated (500mg daily with food) and increased by 500mg every 2 to 3 days to achieve 2000mg within 2 weeks, taken as divided doses. Should side-effects occur, participants will be advised to reduce the current dose to that of the previous week and wait for 1 week before increasing the dose again. Treatment will be initiated after randomisation and continued until the delivery of

the baby. Metformin will be dispensed at study visits and adherence assessed by tablet count.

Participants randomised to the lifestyle intervention arms will receive weekly sessions for 8 consecutive weeks. The sessions will be covered by video, email or telephone. Following a general review of the lifestyle or lifestyle plus metformin intervention, each session will be designed to deliver a different element of the intervention. The development of the UPBEAT lifestyle intervention was informed by psychological models of health behaviour, including control and social cognitive theory [34]. Participants will be encouraged to set achievable goals using the SMART (Specific, Measurable, Achievable, Relevant, Time Specific) goal approach, which will be reviewed on a weekly basis. In addition, participants will be asked to self-monitor their progress using a logbook. The participants will also receive a handbook with guidance on making the changes, along with recipe ideas and general information on eating while pregnant.

**Standard care** Women randomised to the standard care group will attend all study visits except the 8 weekly intervention sessions and receive routine antenatal care according to local health care provision.

### 22–25 weeks' gestation appointment

All participants will be fitted with a continuous glucose monitoring (CGM) sensor for 7–10 days, again in blinded mode. Dietary intake and physical activity will be assessed using the FFQ and accelerometer. In the 'lifestyle plus metformin' arm, metformin will be dispensed, information on any side effects or adverse events will be collected and adherence will be assessed by tablet count.

### 24–28 weeks' gestation appointment

All participants will be asked to attend at 24–28 weeks' gestation for an oral glucose tolerance test (fasting for a minimum of 10 h, 75 g glucose load). Routine clinical blood samples will be taken fasted and 2 h after the glucose load in accordance with The National Institute of Clinical Excellence (NICE) guidelines for the diagnosis of GDM [17]. Research blood samples will be obtained in the fasted state, 1 h and 2 h following the glucose load. For the purposes of the research, GDM will be diagnosed in accordance with IADPSG criteria: fasting capillary glucose  $\geq 5.1$  mmol/L and/or 1-h glucose  $\geq 10$  mmol/L and/or 2-h glucose  $\geq 8.5$  mmol/L [37]. If a participant develops GDM (by NICE) during the study, she will be asked to continue with the medication and will be referred to the antenatal diabetes team for further advice and treatment. Weight will be measured at this visit.

### 34–36 weeks' gestation appointment

Metformin will be dispensed to those allocated the drug. Women will be instructed to stop trial medication on the day of delivery and will be asked to hand in the rest of the trial medication to the research team. Information on any side effects and adverse events will be collected in the metformin arm. Adherence will be assessed by tablet count. Information on pregnancy complications will be collected and weight will be recorded in all arms.

### Process evaluation

A process evaluation will be performed to investigate whether the intervention was implemented as planned and whether participants were satisfied with the intervention. The process evaluation will follow Steckler and Linnan's framework [38]. This will explore:

- 1) Context (environmental, socio-economic, political factors)
- 2) Reach (proportion of target population that participates in the intervention)
- 3) Dose delivered and dose received (proportion of intervention received)
- 4) Fidelity (extent to which the intervention was delivered as prescribed by the protocol)
- 5) Acceptability (if intervention materials and advice were well received by the participants)

Qualitative, semi-structured interviews will be conducted to capture the women's perceptions and experiences of the study. Women will be recruited ( $n=15$ , 5 per group) after the intervention has been provided. The interviews will be recorded and transcribed.

### Trial outcomes

#### Primary feasibility outcomes

Trial feasibility will include examination of recruitment, retention, intervention adherence, determination of sample size and acceptability. Recruitment will be determined by calculating the proportion of randomised participants from those screened for eligibility. Retention will be measured by the percentage of participants completing the study through the post-assessment. Intervention attendance will be assessed as the number of diet and physical activity sessions completed, with a range of 0 to 8. Adherence to metformin will be defined as participants taking 80% of the study prescribed medication during the trial as assessed by tablet count. The accelerometer wear time will be reported (hours/day). CGM adherence will be defined by sensor wear  $\geq 70\%$ . For future full-scale RCTs using CGM, the sample size will be calculated based on the best estimate of the standard deviation and distribution of mean 24-h glucose as determined in the pilot to detect a 0.5-mmol/L difference

between arms. Intervention acceptability will be evaluated by an embedded process evaluation using qualitative research methods. Interview questions will address intervention satisfaction and usefulness in addition to ease of using study devices. Additional questions will address the women's perceptions of risk and benefits of taking metformin, barriers to adherence and the dose of metformin that is acceptable to women. Feedback on the content of the diet and physical activity components will also be obtained in addition to the delivery format (online delivery and time involved).

### Secondary patient-centred outcomes

- A reduction in mean glucose/24h of 0.5 mmol/L after 8 weeks of treatment compared to the standard arm as assessed using CGM.
- Other glycaemic parameters after 8 weeks of treatment; mean daytime glucose 0.700–23.00h, mean nocturnal glucose 23.00–0.700h, percentage time in tight glucose control target 3.5–6.7mmol/L, percentage time in recommended glucose control target 3.5–7.8mmol/L, area under the curve (AUC) <6.7mmol/L, AUC <7.8mmol/L, glucose variability measures (standard deviation (SD), coefficient of variation (CV)), high blood glucose index (HBGI) and low blood glucose index (LBGI).
- GDM diagnosis at 24–28 weeks (in accordance with IADPSG and NICE criteria).
- Metabolome; a targeted high-throughput nuclear magnetic resonance (NMR) metabolomic platform (<http://computationalmedicine.fi/>) will be used to measure metabolites from blood samples at baseline and at the time of the diagnostic OGTT. The platform quantifies lipid measures including lipoprotein particles (VLDL subdivided into 6 subclasses, IDL, LDL subdivided into 3 subclasses and HDL subdivided into 4 subclasses), constituents within each lipoprotein particle type (triglycerides, total cholesterol, free cholesterol and cholesterol ester levels and phospholipid concentrations), fatty acids, amino acids, glycolysis related metabolites, ketone bodies and inflammatory markers.
- Dietary intake and physical activity, including changes in GI, GL, saturated fat, time spent in light and moderate exercise and sedentary behaviour from baseline and after the 8-week intervention.

### Sample size calculation and loss to follow-up

The study is intended as a pilot, one of whose aims is to gather the information needed for planning the definitive trial. This includes estimating the SD of the main

outcome (the difference in mean 24-h glucose between arms) and checking the distribution. With twenty participants per arm, the SD can be estimated to within 80% of the true value. A 0.5mmol/L difference in mean 24-h glucose was considered to be of biological relevance based on data from comparable studies of CGM in pregnant women with obesity [39–41]. To account for up to 25% loss to follow-up and achieve a total sample size of 60, a sample of 84 women will be recruited.

### Statistical analysis

An intention-to-treat analysis will be completed for participants in all arms. Demographic characteristics will be compared between groups using Student's *t* test or Mann–Whitney tests for continuous data and Pearson's chi-squared test for categorical data as appropriate. For continuous variables, results will be presented as means and standard deviations. The number and percentage will be presented for categorical and binary variables. Following distributional checks, log transformations will be carried out as needed. For the primary and main secondary glycaemic outcomes, an adjustment will be made using multiple linear regression (method analysis of covariance; ANCOVA [42]). For yes/no outcomes, binomial regression will be used with a log link to give risk ratios. For other outcomes, where there is no baseline value, adjustment will be made for the primary outcome only. Analytes measured from a targeted NMR metabolome will be checked for normality; those with non-parametric distribution will be log-transformed. Analyte data at baseline and at the time of the diagnostic OGTT (24–28 weeks) will be compared between women who received the intervention and those who did not. To test for the effect of the intervention on dietary and physical activity outcomes, ANCOVA will be used adjusted for trial entry measurements.

### Data monitoring

A trial steering committee will be established to oversee the conduct and progress of the trial. The terms of reference of the Trial Steering Committee have been developed separately.

All adverse events (AEs) and serious adverse events (SAEs) will be recorded from the time a participant is randomised into the trial. All SAEs, serious adverse reactions (SARs) or unexpected serious adverse reactions (SUSARs) in the lifestyle and metformin arm will be reported immediately by the chief investigator to the King's Health Partners Clinical Trial Office (KHPs-CTO) in accordance with the current Pharmacovigilance Policy.

### Data management

Types of data collected in this study will include participant information (anonymised) on demography, medical and family history and current pregnancy health which will be collected at study entry. Information on dietary intake, physical activity and glucose homeostasis will be collected pre- and post-intervention. Following delivery, information will be collected from maternal and neonatal medical records regarding health in late pregnancy, labour onset, mode of delivery and inpatient nights. Neonatal outcome data will include admission to special care baby unit. A study-specific Web-based data platform (MedSciNet™) will be used in this trial. All data entries will be logged, providing an effective audit trail including randomisation history. All records will be kept in line with applicable national laws and regulations.

### Confidentiality

All data from maternity records, questionnaires and visit notes will be anonymised; kept confidential; and stored in line with the Medicines for Human Use (Clinical Trials) Amended Regulations 2006 and the General Data Protection Regulation and archived in accordance with the Medicines for Human Use (Clinical Trials) Amended Regulations 2006. The trial database will be locked before the final analysis in line with the local guidelines. All anonymised data will be stored on a password-protected computer with limited access. No personally identifiable information will be included in any publications or presentations relating to this study.

### Discussion

Several RCTs including UPBEAT have attempted to improve pregnancy outcomes using lifestyle and/or pharmacological intervention in pregnant women with obesity. The lack of success of these RCTs in unselected women has shifted the focus to targeted interventions for those individuals identified at greatest risk of adverse pregnancy outcomes. Early identification and treatment of high-risk women may improve the health of the mother and her infant.

This study is designed to provide evidence that early risk stratification of pregnant women with obesity for later development of GDM and early targeted intervention using lifestyle advice with or without metformin is feasible and improves glucose tolerance compared to standard antenatal care. If the study proves effective, the next stage will be the development of a protocol for an RCT adequately powered for examining a reduction in the prevalence of GDM. The aim will be to determine, whether in a high-risk subgroup of pregnant women with



obesity, targeted intervention with lifestyle advice +/- metformin is an effective strategy for the prevention of GDM.

#### Abbreviations

AEs: Adverse events; AUC: Area under the curve; BMI: Body mass index; CGM: Continuous glucose monitoring; CV: Coefficient of variation; FFQ: Food frequency questionnaire; GDM: Gestational diabetes mellitus; GI: Glycaemic index; GL: Glycaemic load; HBGI: High blood glucose index; IADPSG: The International Association of Diabetes and Pregnancy Study Groups; KHPs-CTO: King's Health Partners Clinical Trial Office; LBGI: Low blood glucose index; LGA: Large-for-gestational age; NHS: The National Health Service; NICE: The National Institute of Clinical Excellence; NMR: Nuclear magnetic resonance; OGTT: Oral glucose tolerance test; RCT: Randomised controlled trial; SAEs: Serious adverse events; SARs: Serious adverse reactions; SD: Standard deviation; SUSARs: Unexpected serious adverse reactions.

#### Acknowledgements

Not applicable.

#### Authors' contributions

ACF, SLW and LP were responsible for designing the study. OFQ prepared the first draft of the manuscript. Successive drafts were contributed by OFQ, ACF, SLW, LP, GN, JH, PTS, CG, AB, OF, IV, OO, EC, JP and KGN. The final draft of the manuscript was approved by all authors.

#### Funding

This research was funded in whole, or in part, by the Wellcome Trust [208925/Z/17/Z]. For the purpose of open access, the author has applied a CC BY public copyright licence to any Author Accepted Manuscript version arising from this submission. SLW and LP are supported by Tommy's charity. OFQ is supported by King Abdulaziz University, Jeddah, Saudi Arabia. PTS is partly funded by Tommy's and by ARC South London (NIHR).

#### Availability of data and materials

Not applicable.

#### Declarations

#### Ethics approval and consent to participate

UK IRAS integrated research application system; reference 18/LO/1500.

#### Consent for publication

Not applicable.

#### Competing interests

The authors declare that they have no competing interests.

#### Author details

<sup>1</sup>Department of Women and Children's Health, School of Life Course Sciences, King's College London, 10th Floor North Wing, St Thomas' Hospital, Westminster Bridge Road, London SE1 7EH, UK. <sup>2</sup>Department of Clinical Nutrition, Faculty of Applied Medical Science, King Abdulaziz University, Jeddah, Kingdom of Saudi Arabia. <sup>3</sup>Department of Nutritional Sciences, School of Life Course Sciences, King's College London, Franklin-Wilkins Building, 150 Stamford Street, London SE1 9NH, UK.

Received: 21 September 2021 Accepted: 3 March 2022

Published online: 25 March 2022

#### References

- NCD Risk Factor Collaboration (NCD-RisC). Trends in adult body-mass index in 200 countries from 1975 to 2014: a pooled analysis of 1698 population-based measurement studies with 19.2 million participants NCD Risk Factor Collaboration (NCD-RisC)\*. 2016.
- National Maternity and Perinatal Audit. National Maternity and Perinatal Audit (NMPA) [Internet]. 2019. Available from: <https://www.hqip.org.uk/resource/national-maternity-and-perinatal-audit-nmpa-clinical-report-2019/#.YRKR5NNKigQ>.
- Poston L, Caleyachetty R, Cnattingius S, Corvalán C, Uauy R, Herring S, et al. Preconceptional and maternal obesity: epidemiology and health consequences. *Lancet Diabetes Endocrinol*. 2016;4:1025–36.
- Torloni MR, Betrán AP, Horta BL, Nakamura MU, Atallah AN, Moron AF, et al. Prepregnancy BMI and the risk of gestational diabetes: a systematic review of the literature with meta-analysis: diagnostic in obesity and complications. *Obes Rev*. 2009;10:194–203.
- Marchi J, Berg M, Dencker A, Olander EK, Begley C. Risks associated with obesity in pregnancy, for the mother and baby: a systematic review of reviews. *Obes Rev*. 2015;16:621–38.
- Bryson CL, Ioannou GN, Rulyak SJ, Critchlow C. Association between gestational diabetes and pregnancy-induced hypertension. *Am J Epidemiol*. 2003;158:1148–53.
- Billionnet C, Mitancher D, Weill A, Nizard J, Alla F, Hartemann A, et al. Gestational diabetes and adverse perinatal outcomes from 716,152 births in France in 2012. *Diabetologia*. 2017;60:636–44.
- Noctor E. Type 2 diabetes after gestational diabetes: the influence of changing diagnostic criteria. *World J Diabetes*. 2015;6:234.
- Kramer CK, Campbell S, Retnakaran R. Gestational diabetes and the risk of cardiovascular disease in women: a systematic review and meta-analysis. *Diabetol*. 2019. 2019;62:905–14. Available from: <https://link.springer.com/article/10.1007/s00125-019-4840-2>. Cited 2021 Jul 27.
- Hopmans TEP, van Houten C, Kasius A, Kouznetsova OI, Nguyen LA, Rooijmans SV, et al. Increased risk of type II diabetes mellitus and cardiovascular disease after gestational diabetes mellitus: a systematic review. *Ned Tijdschr Geneesk*. 2015;159:A8043.
- Young BC, Ecker JL. Fetal macrosomia and shoulder dystocia in women with gestational diabetes: risks amenable to treatment? *Curr Diab Rep*. 2013;13:12–8.
- Wang J, Wang L, Liu H, Zhang S, Leng J, Li W, et al. Maternal gestational diabetes and different indicators of childhood obesity: a large study. *Endocr Connect*. 2018;7:1464–71.
- Blotsky AL, Rahme E, Dahhou M, Nakhla M, Dasgupta K. Gestational diabetes associated with incident diabetes in childhood and youth: a retrospective cohort study. *CMAJ*. 2019;191:E410–7.
- Clausen TD, Mathiesen ER, Hansen T, Pedersen O, Jensen DM, Lauenborg J, et al. High prevalence of type 2 diabetes and pre-diabetes in adult offspring of women with gestational diabetes mellitus or type 1 diabetes: the role of intrauterine hyperglycemia. *Diabetes Care*. 2008;31:340–6.
- Ruchat SM, Houde AA, Voisin G, St-Pierre J, Perron P, Baillargeon JP, et al. Gestational diabetes mellitus epigenetically affects genes predominantly involved in metabolic diseases. *Epigenetics*. 2013;8:935–43.
- Pathirana MM, Lassi ZS, Ali A, Arstall MA, Roberts CT, Andraweera PH. Association between metabolic syndrome and gestational diabetes mellitus in women and their children: a systematic review and meta-analysis. *Endocrine*. 2020;71:310–20. Available from: <https://doi.org/10.1007/s12020-020-02492-1>. Cited 2021 Aug 10.
- National Institute for Health and Care Excellence. Diabetes in pregnancy: management from preconception to the postnatal period NICE; 2015.
- Sovio U, Murphy HR, Smith GCS. Accelerated fetal growth prior to diagnosis of gestational diabetes mellitus: a prospective cohort study of nulliparous women. *Diabetes Care*. 2016;39:982–7.
- White SL, Pasupathy D, Sattar N, Nelson SM, Lawlor DA, Briley AL, et al. Metabolic profiling of gestational diabetes in obese women during pregnancy. *Diabetologia*. 2017;60:1903–12.
- Mokkala K, Vahlberg T, Pellonperä O, Houttu N, Koivuniemi E, Laitinen K. Distinct metabolic profile in early pregnancy of overweight and obese women developing gestational diabetes. *J Nutr*. 2020;150:31–7.
- The International Weight Management in Pregnancy (i-WIP) Collaborative Group. Effect of diet and physical activity based interventions in pregnancy on gestational weight gain and pregnancy outcomes: meta-analysis of individual participant data from randomised trials. *BMJ*. 2017;358:j3119.
- Chiswick C, Reynolds RM, Denison F, Drake AJ, Forbes S, Newby DE, et al. Effect of metformin on maternal and fetal outcomes in obese pregnant women (EMPOWaR): a randomised, double-blind, placebo-controlled trial. *Lancet Diabetes Endocrinol*. 2015;3:778–86.

23. Dodd JM, Louise J, Deussen AR, Grivell RM, Dekker G, McPhee AJ, et al. Effect of metformin in addition to dietary and lifestyle advice for pregnant women who are overweight or obese: the GRoW randomised, double-blind, placebo-controlled trial. *Lancet Diabetes Endocrinol.* 2019;7:15–24.
24. Syngelaki A, Nicolaidis KH, Balani J, Hyer S, Akolekar R, Kotecha R, et al. Metformin versus placebo in obese pregnant women without diabetes mellitus. *N Engl J Med.* 2016;374:434–43.
25. Koivusalo SB, Rönö K, Klemetti MM, Roine RP, Lindström J, Erkkola M, et al. Gestational diabetes mellitus can be prevented by lifestyle intervention: the Finnish gestational diabetes prevention study (RADIEL): a randomized controlled trial. *Diabetes Care.* 2016;39:24–30.
26. H. Al Wattar B, Dodds J, Placzek A, Beresford L, Spyrelli E, Moore A, et al. Mediterranean-style diet in pregnant women with metabolic risk factors (ESTEEM): a pragmatic multicentre randomised trial. *Persson LÅ, editor. PLoS Med.* 2019;16:e1002857.
27. Guo F, Yang S, Zhang Y, Yang X, Zhang C, Fan J. Nomogram for prediction of gestational diabetes mellitus in urban, Chinese, pregnant women. *BMC Pregnancy Childbirth.* 2020;20:43.
28. Harrison CL, Lombard CB, East C, Boyle J, Teede HJ. Risk stratification in early pregnancy for women at increased risk of gestational diabetes. *Diabetes Res Clin Pract.* 2015;107:61–8.
29. Nanda S, Savvidou M, Syngelaki A, Akolekar R, Nicolaidis KH. Prediction of gestational diabetes mellitus by maternal factors and biomarkers at 11 to 13 weeks. *Prenat Diagn.* 2011;31:135–41.
30. Abell SK, Shorakae S, Boyle JA, De Courten B, Stepto NK, Teede HJ, et al. Role of serum biomarkers to optimise a validated clinical risk prediction tool for gestational diabetes. *Aust New Zeal J Obstet Gynaecol.* 2019;59:251–7.
31. Donovan BM, Breheny PJ, Robinson JG, Baer RJ, Saftlas AF, Bao W, et al. Development and validation of a clinical model for preconception and early pregnancy risk prediction of gestational diabetes mellitus in nulliparous women. *PLoS One.* 2019;14:e0215173.
32. Sweeting AN, Appelblom H, Ross GP, Wong J, Kourou H, Williams PF, et al. First trimester prediction of gestational diabetes mellitus: a clinical model based on maternal demographic parameters. *Diabetes Res Clin Pract.* 2017;127:44–50.
33. Thériault S, Forest JC, Massé J, Giguère Y. Validation of early risk-prediction models for gestational diabetes based on clinical characteristics. *Diabetes Res Clin Pract.* 2014;103:419–25.
34. Poston L, Bell R, Croker H, Flynn AC, Godfrey KM, Goff L, et al. Effect of a behavioural intervention in obese pregnant women (the UPBEAT study): a multicentre, randomised controlled trial. *Lancet Diabetes Endocrinol.* 2015;3:767–77.
35. White SL, Lawlor DA, Briley AL, Godfrey KM, Nelson SM, Oteng-Ntim E, et al. Early antenatal prediction of gestational diabetes in obese women: development of prediction tools for targeted intervention. *Samocha-Bonet D, editor. PLoS One.* 2016;11:e0167846.
36. Chan AW, Tetzlaff JM, Altman DG, Laupacis A, Gøtzsche PC, Krleža-Jerić K, et al. SPIRIT 2013 statement: defining standard protocol items for clinical trials. *Ann Intern Med.* 2013;158:200–7.
37. International Association of Diabetes and Pregnancy Study Groups Consensus Panel. International Association of Diabetes and Pregnancy Study Groups recommendations on the diagnosis and classification of hyperglycemia in pregnancy. *Diabetes Care.* 2010;33:676–82.
38. Linnan L, Steckler A. Process evaluation for public health interventions and research: an overview. *Steckler a, Linnan L, editors. Process Eval Public Heal Interv Res:*1–23. Available from: <https://www.wiley.com/en-gb/Process+Evaluation+for+Public+Health+Interventions+and+Research-p-9781119022480>. Cited 2021 Nov 14.
39. Yogeve Y, Ben-Haroush A, Chen R, Rosenn B, Hod M, Langer O. Diurnal glycaemic profile in obese and normal weight nondiabetic pregnant women. *Am J Obstet Gynecol.* 2004;191:949–53.
40. Maitland R, Patel N, Barr S, Sherry C, Marriage B, Seed P, et al. A slow-digesting, low-glycemic load nutritional beverage improves glucose tolerance in obese pregnant women without gestational diabetes. *Diabetes Technol Ther.* 2018;20:672–80.
41. Harmon KA, Gerard L, Jensen DR, Kealey EH, Hernandez TL, Reece MS, et al. Continuous glucose profiles in obese and normal-weight pregnant women on a controlled diet: metabolic determinants of fetal growth. *Diabetes Care.* 2011;34:2198–204.
42. Vickers AJ, Altman DG. Analysing controlled trials with baseline and follow up measurements. *BMJ.* 2001;323:1123–4 [cited 2021 Aug 3]. Available from: <https://www.bmj.com/content/323/7321/1123>.

## Publisher's Note

Springer Nature remains neutral with regard to jurisdictional claims in published maps and institutional affiliations.

Ready to submit your research? Choose BMC and benefit from:

- fast, convenient online submission
- thorough peer review by experienced researchers in your field
- rapid publication on acceptance
- support for research data, including large and complex data types
- gold Open Access which fosters wider collaboration and increased citations
- maximum visibility for your research: over 100M website views per year

At BMC, research is always in progress.

Learn more [biomedcentral.com/submissions](https://biomedcentral.com/submissions)

