



## King's Research Portal

DOI:

[10.1161/HYPERTENSIONAHA.111.00691](https://doi.org/10.1161/HYPERTENSIONAHA.111.00691)

*Document Version*

Publisher's PDF, also known as Version of record

[Link to publication record in King's Research Portal](#)

*Citation for published version (APA):*

Samuelsson, A. M., Clark, J., Rudyk, O., Shattock, M. J., Bae, S. E., South, T., Pombo, J., Redington, K., Uppal, E., Coen, C. W., Poston, L., & Taylor, P. D. (2013). Experimental hyperleptinemia in neonatal rats leads to selective leptin responsiveness, hypertension, and altered myocardial function. *Hypertension*, *62*(3), 627-633. <https://doi.org/10.1161/HYPERTENSIONAHA.111.00691>

### **Citing this paper**

Please note that where the full-text provided on King's Research Portal is the Author Accepted Manuscript or Post-Print version this may differ from the final Published version. If citing, it is advised that you check and use the publisher's definitive version for pagination, volume/issue, and date of publication details. And where the final published version is provided on the Research Portal, if citing you are again advised to check the publisher's website for any subsequent corrections.

### **General rights**

Copyright and moral rights for the publications made accessible in the Research Portal are retained by the authors and/or other copyright owners and it is a condition of accessing publications that users recognize and abide by the legal requirements associated with these rights.

- Users may download and print one copy of any publication from the Research Portal for the purpose of private study or research.
- You may not further distribute the material or use it for any profit-making activity or commercial gain
- You may freely distribute the URL identifying the publication in the Research Portal

### **Take down policy**

If you believe that this document breaches copyright please contact [librarypure@kcl.ac.uk](mailto:librarypure@kcl.ac.uk) providing details, and we will remove access to the work immediately and investigate your claim.

## Experimental Hyperleptinemia in Neonatal Rats Leads to Selective Leptin Responsiveness, Hypertension, and Altered Myocardial Function

Anne-Maj Samuelsson, James Clark, Olena Rudyk, Michael J. Shattock, Sung Eun Bae, Timothy South, Joaquim Pombo, Kathrine Redington, Esna Uppal, Clive W. Coen, Lucilla Poston, Paul D. Taylor

**Abstract**—The prevalence of obesity among pregnant women is increasing. Evidence from human cohort studies and experimental animals suggests that offspring cardiovascular and metabolic function is compromised through early life exposure to maternal obesity. Previously, we reported that juvenile offspring of obese rats develop sympathetically mediated hypertension associated with neonatal hyperleptinemia. We have now addressed the hypothesis that neonatal exposure to raised leptin in the immediate postnatal period plays a causal role. Pups from lean Sprague-Dawley rats were treated either with leptin (3 mg/kg IP) or with saline twice daily from postnatal day 9 to 15 to mimic the exaggerated postnatal leptin surge observed in offspring of obese dams. Cardiovascular function was assessed by radiotelemetry at 30 days, and 2 and 12 months. In juvenile (30 days) leptin-treated rats, hearts were heavier and night-time (active period) systolic blood pressure was raised (mmHg; mean±SEM: male leptin-treated, 132±1 versus saline-treated, 119±1, n=6,  $P<0.05$ ; female leptin-treated, 132±2 versus saline-treated, 119±1, n=6,  $P<0.01$ ), and the pressor response to restraint stress and leptin challenge increased compared with saline-treated rats. Heart rate variability demonstrated an increased low:high frequency ratio in 30-day leptin-treated animals, indicative of heightened sympathetic efferent tone. Echocardiography showed altered left ventricular structure and systolic function in 30-day female leptin versus saline-treated rats. These disorders persisted to adulthood. In isolated hearts, contractile function was impaired at 5 months in male leptin-treated rats. Exogenously imposed hyperleptinemia in neonatal rats permanently influences blood pressure and cardiac structure and function. (*Hypertension*. 2013;62:627-633.) • [Online Data Supplement](#)

**Key Words:** developmental programming ■ hypertension ■ leptin ■ obesity ■ rats ■ sympathetic nervous system ■ ventricular dysfunction

Pregnant women who are obese or whose gestational weight gain is above recommended limits are at increased risk of obstetric complications,<sup>1</sup> but there may also be longer term consequences for the health of the child.<sup>2</sup> A high maternal pre-pregnancy body mass index and excessive gestational weight gain have been frequently independently associated with a heightened risk of offspring metabolic dysfunction and obesity<sup>3</sup> and there is increasing evidence to suggest that cardiovascular function may also be compromised.<sup>4</sup>

Studies of maternal calorie-rich diets and obesity in rodents, sheep, and nonhuman primates have provided unequivocal evidence for persistent and adverse influences on the offspring.<sup>5</sup> We and others have repeatedly observed cardiovascular dysfunction secondary to maternal obesity in animal models.<sup>6-8</sup> Previously, we observed that juvenile offspring of obese rats have aberrant autonomic control of blood pressure (BP) resulting in hypertension, which occurs before the development of

increased adiposity and persists into adulthood,<sup>7</sup> and that these animals demonstrate hyperphagia and leptin resistance associated with a functional, structural, and cell-signaling deficit in leptin-sensitive processes in the arcuate nucleus and paraventricular nucleus of the hypothalamus.<sup>9</sup> The cardiovascular response to exogenous leptin, which is mediated through hypothalamic sympathetic efferent activity,<sup>10,11</sup> was, conversely, enhanced.<sup>7</sup> This differential response to leptin, sometimes termed selective leptin resistance, had been observed in rodents, but previously only in association with chronic obesity.<sup>12</sup> We also reported that the offspring of obese dams (OffOb) exhibit an exaggerated and prolonged physiological postnatal serum leptin surge,<sup>9</sup> known to play a critical role in the development of the normal rodent hypothalamus.<sup>13</sup> We hypothesized that neonatal exposure to supranormal leptin concentrations during this important window of hypothalamic plasticity may play a causal role in offspring cardiovascular

Received November 21, 2012; first decision December 27, 2012; revision accepted June 14, 2013.

From the Division of Women's Health, Women's Health Academic Centre (A.-M.S., S.E.B., T.S., J.P., K.L.R., E.U., C.W.C., L.P., P.D.T.), and Cardiovascular Division, King's College London, King's Health Partners (J.E.C., O.V.R., M.J.S.), London, United Kingdom.

The online-only Data Supplement is available with this article at <http://hyper.ahajournals.org/lookup/suppl/doi:10.1161/HYPERTENSIONAHA.111.00691/-DC1>.

Correspondence to Anne-Maj Samuelsson, Division of Women's Health, Women's Health Academic Centre, King's College London, KHP, 10th Floor, N Wing, St. Thomas' Hospital, Westminster Bridge Rd, London SE1 7EH, United Kingdom. E-mail Anne-Maj.Samuelsson@kcl.ac.uk

© 2013 American Heart Association, Inc.

*Hypertension* is available at <http://hyper.ahajournals.org>

DOI: 10.1161/HYPERTENSIONAHA.111.00691

dysfunction. We have, therefore, investigated the influence of exogenous leptin administration in neonatal rats on parameters of cardiovascular function and control measured in juvenile and adult life. Because the heart weight is increased in offspring of obese rats<sup>9,14</sup> and mice<sup>15</sup> and because leptin has been implicated in neonatal rodent cardiomyocyte proliferation and remodeling,<sup>16,17</sup> we also studied the morphology of the heart, and cardiac function as assessed *in vivo* and *ex vivo*.

## Methods

### Animals

Standard principles of laboratory animal care were used and all procedures approved in accordance with the United Kingdom Government Home Office Animals (Specific Procedures) Act, 1986 (PPL70/7090) and King's College London Animal Ethical Review Process Committee.

Female Sprague-Dawley rats (Harlan Laboratories) were housed under controlled conditions (light exposure, 07:00–19:00 hours; 21±2°C; 40%–50% humidity) and during mating and breeding maintained on a breeding diet (RM3, Special Diet Services). Forty-eight hours after delivery, litter size was standardized to 8 pups (equal numbers, male and female) and the litters randomly assigned to leptin (L-Tx; n=12) or saline (S-Tx; n=12) treatment. Leptin (3 mg/kg; PeproTech Ltd) or saline vehicle was administered intraperitoneally twice daily (10:00 hours, 16:00 hours) from postnatal day (PD) 9 until PD15. Offspring were weaned (day 21) onto standard chow and euthanized at 30 days, 2 and 12 months of age. Blood was collected by cardiac puncture. Inguinal white adipose tissue, the heart, and the liver were weighed and cryopreserved. A separate cohort of L-Tx and S-Tx litters were euthanized by decapitation at PD 2, 6, 7, 8, 9, 11, 14, and 20, 4 hours after the first leptin injection to obtain organ weights and serum for leptin analysis.

### Leptin Challenge

Animals were challenged with leptin at 30 days (juvenile) and 2 months of age (adult) after an overnight fast as described.<sup>9</sup> A single bolus dose of recombinant rat leptin (10 mg/kg, IP) or saline vehicle was administered at 10:00 hours immediately before food restoration. The feeding and weight responses to leptin were assessed by measuring the change in body weight and food intake during the 24-hour period after the injection.

### Radiotelemetry

Radiotelemetry methods have been described previously.<sup>7</sup> Briefly, juvenile rats were implanted with a mouse transmitter (PA-C10, Data Sciences International [DSI]) in the aortic arch.<sup>6</sup> In adults, the DSI rat telemetry probe (PA-C40) was placed in the descending abdominal aorta.<sup>7</sup> Heart rate variability (HRV) was analyzed from the telemetry record. Cardiovascular response to restraint stress was recorded for 20 minutes with 120-minute recovery. Responses to a combination of intraperitoneal terazosin (10 mg/kg) and propranolol (10 mg/kg), or to leptin (10 mg/kg) were recorded.<sup>7</sup> Spontaneous locomotor activity (counts of lateral movements in the cage) was monitored and analyzed using DataScience Dataquest software and expressed in arbitrary units.

### Echocardiography

Left ventricular (LV) systolic function and chamber dimension were determined *in vivo* in 30-day and 12-month-old rats. M-mode tracings were recorded from the short-axis view at the high papillary muscle level using a high-resolution Vevo 770 echocardiography system (RMV707B, VisualSonics, Toronto, ON, Canada; see the online-only Data Supplement).

### Isolated Perfused Heart Preparation

As LV function, assessed using electrocardiography, is load- and heart rate-dependent, we assessed LV function and remodeling *ex vivo* at 30 days and 5 months of age, using isolated Langendorff heart preparations (see online-only Data Supplement).

*in vivo* at 30 days and 5 months of age, using isolated Langendorff heart preparations (see online-only Data Supplement).

### Cardiomyocyte Morphology

Midventricular sections (7 µm) of paraformaldehyde fixed hearts were stained with laminin for determination of cardiomyocyte number and mean cardiomyocyte cross-sectional area. Sections were also stained with hematoxylin and eosin and Masson trichrome to estimate fibrosis (see online-only Data Supplement).

### Analyses

#### *Leptin and Insulin*

The serum leptin and insulin concentrations were measured by ELISA (Crystal Chem Inc, Downers Grove, IL)

#### *Renal Tissue Norepinephrine Content*

The left kidney was homogenized in HCl (0.01 mol/L) with EDTA (1 mmol/L) and sodium metabisulfite (4 mmol/L) at day 30. After centrifugation (8000g; 30 minutes), the supernatant norepinephrine (NE) concentration was measured by ELISA (ALPCO Diagnostics, Salem, NH). NE content was expressed as nanogram per gram of renal tissue.

### Data and Statistical Analysis

Data are presented as mean±SEM and analyzed using Student *t* test and 1-way ANOVA when appropriate. Cardiovascular analysis was performed by 1-way ANOVA for repeated measurements followed by the Tukey post hoc test. Where no significant differences between male and female data were observed using 2-way ANOVA, data were combined. Analysis of myocyte cross-sectional area (each animal given equal importance) was performed using linear regression with 100 measurements per animal, 4 sections per animal. Statistical significance was accepted as *P*<0.05.

## Results

### Organ Weight and Fat Mass

Neonatal leptin injection at PD9 to PD15 increased the serum leptin concentration ≈5 fold compared with saline treatment, when measured 4 hours postintra-peritoneal injection (Figure S1A in the online-only Data Supplement). L-Tx pups demonstrated an increase in heart weight at PD9, PD11, and PD20 compared with S-Tx (Figure S1C) with no change in body weight (Figure S1B). L-Tx hearts were also heavier than S-Tx at day 30, and body and organ weights remained unchanged (Table S1). At 2 and 12 months, the heart weight in male and female L-Tx, as well as the inguinal fat mass, was increased relative to S-Tx (Table S2).

### Leptin Challenge

Thirty-day-old L-Tx rats showed impaired anorectic responses to the leptin challenge compared with S-Tx, as demonstrated by an absence of a reduction in food intake or body weight over a 24-hour period (Figure S2A). At this time there was no increase in endogenous serum leptin or insulin concentration (Figure S3A and S3B). Leptin resistance was also present at 2 months of age in L-Tx (Figure S2B), at which time endogenous serum leptin and insulin concentrations were significantly raised compared with S-Tx (Figure S3A and S3B).

### BP and Autonomic Function

At 30 days, L-Tx females had a higher mean arterial pressure (MAP) and night-time heart rate (HR; active phase)

versus S-Tx (Figure 1B). L-Tx males showed increased night-time HR versus S-Tx (Figure 1A). Systolic BP was increased in L-Tx male (night-time) and female rats versus S-Tx (Figure S4A and S4B). Diastolic BP was similar in L-Tx and S-Tx (Figure S4A and S4B). Male L-Tx demonstrated reduced locomotor activity versus S-Tx ( $P<0.05$ , Figure S4A).

At 2 months, there were no sex differences in BP, HR, or locomotor activity. L-Tx demonstrated increased day and night-time MAP ( $P<0.05$  and  $P<0.001$ , respectively), whereas night-time HR was markedly reduced ( $P<0.001$ ) versus S-Tx (Figure 1C). Night-time systolic BP ( $P<0.05$ ) and day and night-time diastolic BP ( $P<0.001$ ) were higher in L-Tx versus S-Tx (Figure S4C). There was no difference in spontaneous locomotor activity between groups (Figure S4C).

Spectral analysis of basal HRV showed an increased ratio of low-to-high frequency domains in 30-day-old L-Tx versus S-Tx, indicative of a dominant increase in sympathetic activity. Time domains of HRV, SD of normal to normal intervals and root mean square of successive differences, were similar in juvenile L-Tx and S-Tx. At 2 months of age, L-Tx (sexes combined) showed decreased SD of normal to normal intervals, high frequency, and increased low

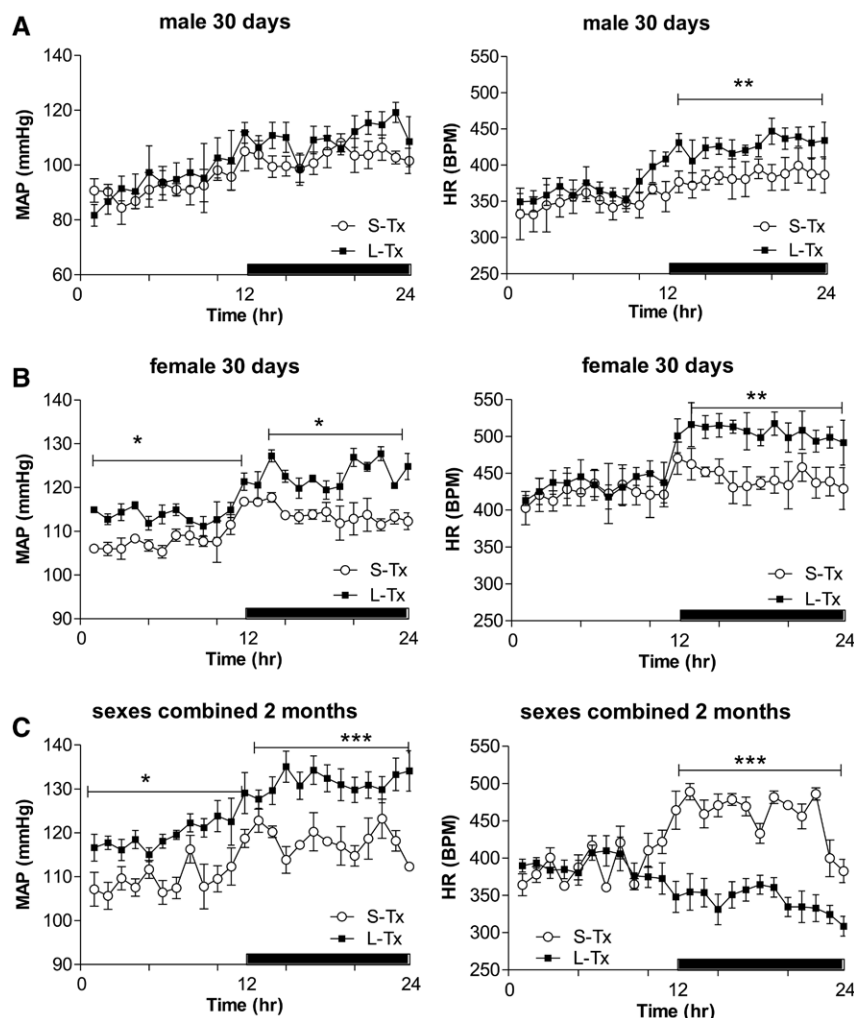
frequency and the ratio of low-to-high frequency versus S-Tx rats (Table S3).

**Cardiovascular Reactivity to Stress and Renal NE**

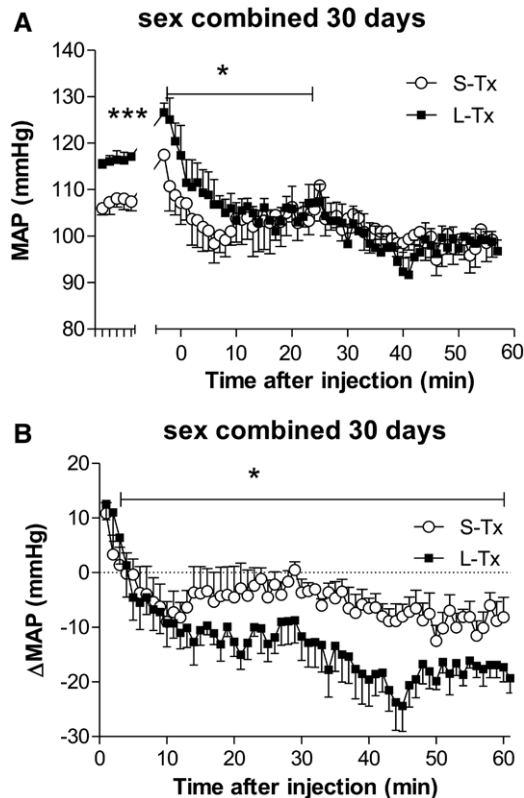
Thirty-day-old L-Tx females exhibited a higher MAP ( $P<0.01$ ) and HR ( $P<0.05$ ) response to 20 minutes of restraint versus S-Tx (Figure S5B). After 120 minutes, the MAP and HR remained elevated in both male and female L-Tx versus S-Tx in which cardiovascular responses had returned to baseline (Figure S5A and S5B). Renal NE content (at baseline, no restraint) was increased 2-fold in L-Tx versus S-Tx (Figure S5C). Sympathetic inhibition by combined administration of the  $\alpha 1$ -adrenergic receptor antagonist, terazosin, and the  $\beta 1/\beta 2$ -adrenergic receptor antagonist, propranolol, normalized MAP and led to a greater fall in basal MAP in L-Tx rats (sexes combined) versus S-Tx (Figure 2A and 2B).

**BP Response to Leptin Challenge**

At 30 days of age, intraperitoneal administration of leptin increased MAP in both L-Tx and S-Tx rats (sexes combined) within 2 hours (Figure 3A). The increase in MAP ( $\Delta$ MAP) was twice as high in L-Tx versus S-Tx rats 6 hours post challenge (Figure 3B). MAP returned to baseline in all the animals by 8 hours (Figure 3A).



**Figure 1.** Mean arterial pressure (MAP) and heart rate (HR) in 30-day-old saline-treated (S-Tx; open circles) or leptin-treated (L-Tx; closed circles) male (A) and female (B) rats and 2-month-old male and female rats combined (C). \*\*\* $P<0.001$ ; \*\* $P<0.01$ ; and \* $P<0.05$  vs saline (repeated-ANOVA;  $n=4$ ). BPM indicates beats per minute.



**Figure 2.** Mean arterial pressure (MAP) response (A) and  $\Delta$ MAP (B) to  $\alpha$ 1-adrenergic receptor antagonist, terazosin (10 mg/kg, IP), plus a  $\beta$ 1/ $\beta$ 2-adrenergic receptor antagonist, propranolol (10 mg/kg, IP) in 30-day-old saline-treated (S-Tx; open circles) or leptin-treated (L-Tx; closed circles) male and female rats combined. \*\*\* $P$ <0.001 vs saline-treated (prechallenge); \* $P$ <0.05 vs saline-treated (15 min, A; 60 min, B; repeated-ANOVA;  $n$ =5–6).

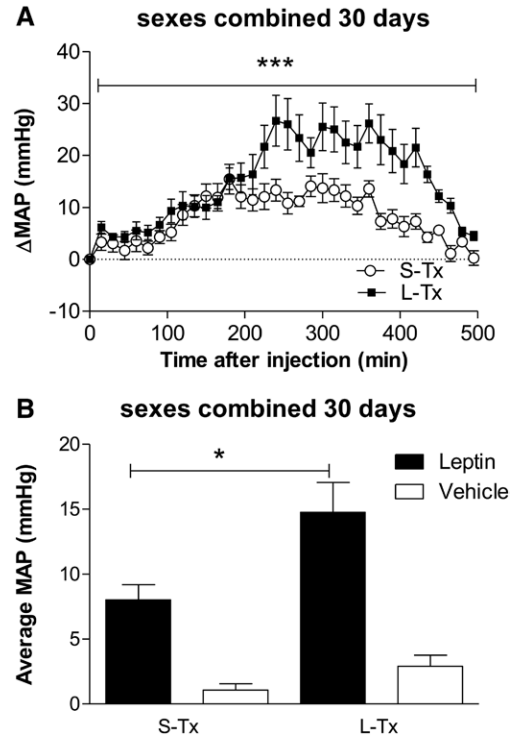
### Cardiac Structure and Function

Thirty-day-old female L-Tx showed increased LV internal diameter at systole, increased LV volume at systole, and decreased intraventricular septal thickness at diastole versus S-Tx (Figure S6A). This was associated with a reduced ejection fraction and fractional shortening in female L-Tx versus S-Tx (Figure S6A; Table S4).

At 12 months, female L-Tx showed markedly increased LV mass, LV internal diameter at systole, and LV posterior wall at diastole (Figure S6B; Table S5). Female L-Tx also demonstrated impaired cardiac function with reduced ejection fraction and fractional shortening (Table S5). Male L-Tx showed increased LV mass and LV internal diameter at diastole (Table S5). No differences in function were observed between groups in male rats.

### Isolated Hearts

Thirty-day-old male and female S-Tx and L-Tx showed preserved Frank-Starling responses to increased LV pressure (Figure S7A and S7B). At 5 months, Frank-Starling responses were similar in S-Tx and L-Tx, whereas L-Tx male hearts showed impaired LV systolic function at a given level of preload (160–260  $\mu$ L), whereas diastolic stiffness remained unaffected (Figure S7A). No differences in cardiac systolic or diastolic function were observed in 5-month-old L-Tx females (Figure S7B).



**Figure 3.** Mean arterial pressure (MAP) response to leptin (10 mg/kg, IP) in 30-day-old saline-treated (S-Tx; open circles) or leptin-treated (L-Tx; closed circles) male and female rats combined (A). Calculated average response to leptin and vehicle over 6 h post challenge (B). \*\*\* $P$ <0.001 vs saline-treated (repeated-ANOVA); \* $P$ <0.05 vs saline-treated ( $t$  test;  $n$ =6–8).

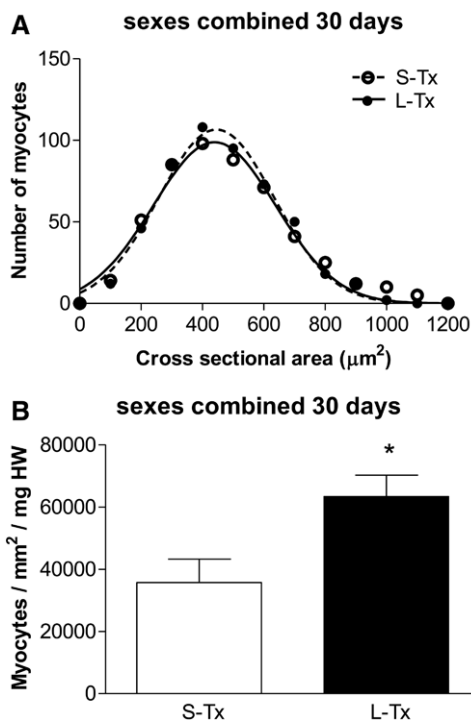
Isoprenaline (10 nmol/L) stimulation resulted in a positive inotropic and chronotropic response in S-Tx and L-Tx hearts, which was independent of age (Figure S8). This chronotropic response was blunted in male L-Tx versus S-Tx hearts at 30 days, although no differences in inotropic responses were observed (Figure S8A). No differences in inotropic or chronotropic response were observed in females at any age (Figure S8B).

### Cardiomyocyte Morphology

Left ventricle myocyte cross-sectional area showed similar Gaussian distribution between the groups (Figure 4A). There was no significant mean difference in cross-sectional area between groups. Cardiomyocyte number per unit area was, however, increased in L-Tx versus S-Tx rats (Figure 4B). Histological examination showed no evidence of fibrosis in the perivascular or intramural vascular structures in L-Tx hearts at 30 days of age (Figure S9).

### Discussion

We have previously reported that maternal diet-induced obesity in rats is associated with juvenile hypertension, hyperphagia, and leptin resistance in the offspring.<sup>7</sup> We implicated central pathways in the hypothalamus and proposed a causal role for the exaggerated and prolonged leptin surge observed in the neonatal offspring during the second postnatal week of life.<sup>7,9</sup> Leptin plays a physiological neurotrophic role in hypothalamic development during this critical period.<sup>18</sup> We now demonstrate that exogenous leptin given to rat pups from lean



**Figure 4.** Myocyte cross-sectional area (CSA; **A**) and number (**B**) from left ventricular (LV) myocardial sections of 30-day-old saline-treated (S-Tx) and leptin-treated (L-Tx) rats. A similar Gaussian distribution for LV myocyte CSA was observed between the groups (100 measurements per animal, 4 sections per animal). Increased cardiomyocyte number (myocyte/ $\text{mm}^2$ )/mg heart weight (HW) was shown in L-Tx vs S-Tx. Values are measured per unit area from 6 fields per section, 4 sections per animal. \* $P < 0.05$  vs saline (*t* test).

dams during the same period leads to a similar phenotype and conclude that this hormone may play a key mechanistic role in the relationship between maternal obesity and cardiovascular and metabolic dysfunction of the offspring.

The serum concentration of leptin achieved in the pups by injection was higher ( $\approx 2$ -fold), but of the same order of magnitude, as that at the peak of the neonatal leptin surge in the OffOb.<sup>9</sup> Similar to the OffOb rats, juvenile L-Tx rats showed a loss of the inhibitory effects of leptin on food intake and body weight, at a time at which endogenous serum leptin was not raised, and this leptin resistance continued into adult life. This is consistent with previous reports showing that exogenous leptin treatment during early postnatal life in rodents leads to a permanent loss of the anorexic response to leptin and increased diet-induced weight gain in adulthood.<sup>18–20</sup>

In common with juvenile OffOb rats,<sup>7</sup> L-Tx rats demonstrated early onset hypertension, increased stress reactivity, renal NE content, and changes to the HRV and the heart rate relationship with BP, indicative of an increase in central sympathetic activity. Further proof of sympathetically mediated hypertension was provided by normalization of the BP by pharmacological adrenoceptor blockade. Despite showing no increase in fat mass or hyperleptinemia at this age, these animals also demonstrated an increased pressor response to leptin, another characteristic of the OffOb rat.<sup>7</sup> This too implicates increased sympathetic efferent activity, as leptin plays an important cardiovascular regulatory role

in the central nervous system.<sup>11</sup> Infusion of leptin or leptin overexpression in adult mice increases renal sympathetic nerve activity and BP,<sup>10,12</sup> whereas monogenic leptin deficiency, in both humans and animals, leads to obesity, but protects against obesity-related hypertension.<sup>21,22</sup> Several of these reports implicate a central role for the hypothalamus, also the site of leptin induced appetite regulation. Taken together the data suggest that the cardiovascular and appetite-regulatory effects of neonatal leptin treatment are attributable to divergent effects on discrete signaling pathways resulting in selective leptin responsiveness in different regions of the hypothalamus, a hypothesis also proposed from leptin challenge studies in adult animals.<sup>11,12</sup> Also, because there is evidence of leptin receptors in the nucleus of the solitary tract which affect sympathetic efferent activation, a role for this cannot be discounted.<sup>23</sup> Previously reported in adult animals and humans which are obese and hyperleptinemic,<sup>12,24</sup> the concept that selective leptin responsiveness can be induced by early exposure to exogenous neonatal leptin is a novel observation. Overall, these observations lend strong support to our hypothesis that the exaggerated postnatal leptin surge in OffOb rats plays an essential role in the adulthood cardiovascular and metabolic profile previously reported.<sup>6,15</sup>

To our knowledge only 2 previous studies have assessed the influence of neonatal leptin on subsequent cardiovascular function. When leptin was administered to mice in the neonatal period (80 ng/g IP PND4–14), Erkonen et al<sup>25</sup> measuring BP with a tail cuff, reported reversal of hypertension in 4-month-old mice which had been induced by neonatal growth restriction (achieved through large-litter rearing), but BP in normal weight pups was unaffected. Trevenzoli et al<sup>26</sup> have recently described increased BP, also by the tail cuff method, in adult 150-day-old rats treated with leptin in the neonatal period (PD1–10), achieving concentrations comparable with the present study, but this could have arisen from the associated increase in body weight in adulthood. The novelty of the present study lies in the development of sympathetically mediated hypertension in juveniles after neonatal L-Tx, before the development of hyperleptinemia and increased body weight, suggesting a direct influence of early leptin exposure on the developing pathways of BP control. Importantly, the use of radiotelemetry avoided stress activation of sympathetic tone, which can be induced by the tail cuff technique.

The BP profile in L-Tx and OffOb rats was not entirely similar. Whereas at 30 and 90 days of age, both male and female OffOb rats had abnormal MAP,<sup>7</sup> only L-Tx females demonstrated a higher MAP. Leptin may, therefore, not be alone in playing an influential role. Fetal hyperinsulinemia also affects hypothalamic neurodevelopment,<sup>27</sup> and the glucose intolerance observed in obese rodent dams is likely to stimulate fetal insulin secretion.<sup>6,14</sup>

Persistent increase in heart weight has been observed in OffOb rodents.<sup>6,14</sup> The alterations in cardiac function in juvenile L-Tx rats as assessed by echocardiography were similar to those we observed in a preliminary study in adult OffOb mice.<sup>28</sup> Cardiac dilatation observed together with impaired contractility (ejection fraction, fractional shortening) may reflect a second decompensatory phase which may be a prelude to myocardial failure in this model.<sup>29</sup>

As L-Tx rats were hypertensive at each age studied, the cardiac abnormalities may occur simply as a result of an increase in BP and hemodynamic load or altered neurohumoral signaling. Alternatively, leptin treatment in early life may have a persistent influence on cardiac structure; previous reports have shown that the addition of leptin to rat neonatal myocyte culture leads to hypertrophy<sup>17</sup> or hyperplasia.<sup>16</sup> Because the majority of rat cardiomyocytes undergo terminal maturation in early postnatal life,<sup>30</sup> we hypothesized that postnatal hyperleptinemia could induce cardiac dysfunction in the juvenile animal through either of these processes. There was no evidence of myocyte hypertrophy and we conclude that increased cardiac mass is a consequence of increased myocyte number, as calculated. Expansion of the extracellular matrix may play a role, but there was no histological evidence of fibrosis.

Sympathetic activation may stimulate heart growth.<sup>31</sup> In the older animals, impaired contractility may also be influenced by hyperleptinemia.<sup>32</sup>

In male L-Tx rats, cardiac function gradually deteriorated with age, possibly related to secondary effects of increased adiposity, hyperleptinemia, and hyperinsulinemia. In contrast, in female L-Tx rats, age-related effects were not obvious, providing an example of sexual dimorphism, frequently observed in studies of developmental programming.<sup>33</sup> There were also differences between female systolic function as assessed in vivo and ex vivo, implicating a role for neural or hormonal influences in vivo.

Care must be taken in extrapolating from animal models to the human condition. Rodents provide a convenient experimental model, with a relatively fast life course, but they are altricial species born at an immature stage of development compared with humans. Considering the critical postnatal window in the current study, the equivalent period of developmental plasticity in the human hypothalamus is most likely the third trimester of pregnancy, but may extend into postnatal life, as demonstrated in nonhuman primates.<sup>34</sup> The metabolic profiles in the adult OffOb rats show similarities to that found in nonhuman primates and in sheep, supporting translation to precocial species.<sup>5</sup> The fetuses of obese pregnant women are exposed to hyperleptinemia as measured by cord blood leptin<sup>35</sup> and in mothers with type 1 diabetes mellitus, cord blood leptin correlates with childhood body mass index aged 7 years<sup>36</sup> and, although seldom measured, BP has been reported to be raised in adult offspring of obese women.<sup>4</sup>

## Perspectives

We propose that early life exposure to hyperleptinemia may directly predispose to early onset hypertension, hyperphagia, and cardiac dysfunction. Mechanistically this may involve the hypothalamus. We have previously shown impaired development of the agouti-related protein pathway in the hypothalamus of juvenile OffOb rats.<sup>9</sup> Agouti-related protein is the endogenous antagonist of the melanocortin-4 receptor; therefore, a reduced antagonism may increase melanocortin-4 receptor signaling at sites relevant to BP regulation and consequently to hypertension,<sup>37</sup> a concept open to exploration with specific pharmacological agents. This study also opens avenues of exploration in animal models and in humans to address the role of early life leptin exposure in early onset

essential hypertension. Most importantly, ongoing mother-child cohort in obese pregnant women should address associations between maternal obesity and offspring cardiovascular function in young children, and through to adulthood.

## Acknowledgments

We thank Dr Rowleron, M. Kalakoutis, and C. Agley for their valuable advice and suggestions relating to the histological analysis.

## Sources of Funding

This study was supported by the British Heart Foundation (FS/10/003/28163) and Biotechnology and Biological Sciences Research Council (BBD5231861). L. Poston is funded by Tommy Charity (1060508). The funders had no role in study design, data collection or analysis, decision to publish, or preparation of the article.

## Disclosures

None.

## References

- Oteng-Ntim E, Doyle P. Maternal outcomes in obese pregnancy. In: Gillman MW, Poston L, eds. *Maternal Obesity*. Cambridge, UK: Cambridge University Press; 2012:35–44.
- Poston L. Gestational weight gain: influences on the long-term health of the child. *Curr Opin Clin Nutr Metab Care*. 2012;15:252–257.
- Norman JE, Reynolds RM, Reynolds R. The consequences of obesity and excess weight gain in pregnancy. *Proc Nutr Soc*. 2011;70:450–456.
- Hochner H, Friedlander Y, Calderon-Margalit R, Meiner V, Sagy Y, Avgil-Tsadok M, Burger A, Savitsky B, Siscovick DS, Manor O. Associations of maternal prepregnancy body mass index and gestational weight gain with adult offspring cardiometabolic risk factors: the Jerusalem Perinatal Family Follow-up Study. *Circulation*. 2012;125:1381–1389.
- Lucilla P, Taylor PD, Nathanielsz P. Influences of maternal obesity on the health of the offspring: a review of animal models. In: Gillman MW, Poston L, eds. *Maternal Obesity*. New York, NY: Cambridge University Press; 2012:100–114.
- Samuelsson AM, Matthews PA, Argenton M, Christie MR, McConnell JM, Jansen EH, Piersma AH, Ozanne SE, Twinn DF, Remacle C, Rowleron A, Poston L, Taylor PD. Diet-induced obesity in female mice leads to offspring hyperphagia, adiposity, hypertension, and insulin resistance: a novel murine model of developmental programming. *Hypertension*. 2008;51:383–392.
- Samuelsson AM, Morris A, Igosheva N, Kirk SL, Pombo JM, Coen CW, Poston L, Taylor PD. Evidence for sympathetic origins of hypertension in juvenile offspring of obese rats. *Hypertension*. 2010;55:76–82.
- Dong M, Zheng Q, Ford SP, Nathanielsz PW, Ren J. Maternal obesity, lipotoxicity and cardiovascular diseases in offspring. *J Mol Cell Cardiol*. 2013;55:111–116.
- Kirk SL, Samuelsson AM, Argenton M, Dhonye H, Kalamatianos T, Poston L, Taylor PD, Coen CW. Maternal obesity induced by diet in rats permanently influences central processes regulating food intake in offspring. *PLoS One*. 2009;4:e5870.
- Shek EW, Brands MW, Hall JE. Chronic leptin infusion increases arterial pressure. *Hypertension*. 1998;31(1 Pt 2):409–414.
- Haynes WG, Morgan DA, Djalali A, Sivitz WI, Mark AL. Interactions between the melanocortin system and leptin in control of sympathetic nerve traffic. *Hypertension*. 1999;33(1 Pt 2):542–547.
- Rahmouni K, Correia ML, Haynes WG, Mark AL. Obesity-associated hypertension: new insights into mechanisms. *Hypertension*. 2005;45:9–14.
- Bouret SG. Neurodevelopmental actions of leptin. *Brain Res*. 2010;1350:2–9.
- Nivoit P, Morens C, Van Assche FA, Jansen E, Poston L, Remacle C, Reusens B. Established diet-induced obesity in female rats leads to offspring hyperphagia, adiposity and insulin resistance. *Diabetologia*. 2009;52:1133–1142.
- Fernandez-Twinn DS, Blackmore HL, Siggins L, Giussani DA, Cross CM, Foo R, Ozanne SE. The programming of cardiac hypertrophy in the offspring by maternal obesity is associated with hyperinsulinemia, AKT, ERK, and mTOR activation. *Endocrinology*. 2012;153:5961–5971.
- Tajmir P, Ceddia RB, Li RK, Coe IR, Sweeney G. Leptin increases cardiomyocyte hyperplasia via extracellular signal-regulated

- kinase- and phosphatidylinositol 3-kinase-dependent signaling pathways. *Endocrinology*. 2004;145:1550–1555.
17. Rajapurohitam V, Gan XT, Kirshenbaum LA, Karmazyn M. The obesity-associated peptide leptin induces hypertrophy in neonatal rat ventricular myocytes. *Circ Res*. 2003;93:277–279.
  18. Yura S, Itoh H, Sagawa N, Yamamoto H, Masuzaki H, Nakao K, Kawamura M, Takemura M, Kakui K, Ogawa Y, Fujii S. Role of premature leptin surge in obesity resulting from intrauterine undernutrition. *Cell Metab*. 2005;1:371–378.
  19. Toste FP, de Moura EG, Lisboa PC, Fagundes AT, de Oliveira E, Passos MC. Neonatal leptin treatment programmes leptin hypothalamic resistance and intermediary metabolic parameters in adult rats. *Br J Nutr*. 2006;95:830–837.
  20. Vickers MH, Gluckman PD, Coveny AH, Hofman PL, Cutfield WS, Gertler A, Breier BH, Harris M. The effect of neonatal leptin treatment on postnatal weight gain in male rats is dependent on maternal nutritional status during pregnancy. *Endocrinology*. 2008;149:1906–1913.
  21. Mark AL, Correia M, Morgan DA, Shaffer RA, Haynes WG. State-of-the-art-lecture: Obesity-induced hypertension: new concepts from the emerging biology of obesity. *Hypertension*. 1999;33(1 Pt 2):537–541.
  22. Ozata M, Ozdemir IC, Licinio J. Human leptin deficiency caused by a missense mutation: multiple endocrine defects, decreased sympathetic tone, and immune system dysfunction indicate new targets for leptin action, greater central than peripheral resistance to the effects of leptin, and spontaneous correction of leptin-mediated defects. *J Clin Endocrinol Metab*. 1999;84:3686–3695.
  23. Mark AL, Agassandian K, Morgan DA, Liu X, Cassell MD, Rahmouni K. Leptin signaling in the nucleus tractus solitarius increases sympathetic nerve activity to the kidney. *Hypertension*. 2009;53:375–380.
  24. Shankar A, Xiao J. Positive relationship between plasma leptin level and hypertension. *Hypertension*. 2010;56:623–628.
  25. Erkonen GE, Hermann GM, Miller RL, Thedens DL, Nopoulos PC, Wemmie JA, Roghair RD. Neonatal leptin administration alters regional brain volumes and blocks neonatal growth restriction-induced behavioral and cardiovascular dysfunction in male mice. *Pediatr Res*. 2011;69(5 Pt 1):406–412.
  26. Trevenzoli IH, Valle MM, Machado FB, Garcia RM, Passos MC, Lisboa PC, Moura EG. Neonatal hyperleptinaemia programmes adrenal medullary function in adult rats: effects on cardiovascular parameters. *J Physiol*. 2007;580(Pt 2):629–637.
  27. Plagemann A. Perinatal nutrition and hormone-dependent programming of food intake. *Horm Res*. 2006;65(Suppl 3):83–89.
  28. Rajani CK, Samuelsson AM, Clark J, Shattock M, Poston L, Taylor PD. Developmental programming of myocardial dysfunction arising from maternal obesity in a murine model. *J DOHAD*. 2009;1:S247.
  29. Hein S, Arnon E, Kostin S, Schönburg M, Elsässer A, Polyakova V, Bauer EP, Klövekom WP, Schaper J. Progression from compensated hypertrophy to failure in the pressure-overloaded human heart: structural deterioration and compensatory mechanisms. *Circulation*. 2003;107:984–991.
  30. Soonpaa MH, Kim KK, Pajak L, Franklin M, Field LJ. Cardiomyocyte DNA synthesis and binucleation during murine development. *Am J Physiol*. 1996;271(5 Pt 2):H2183–H2189.
  31. Barbera A, Giraud GD, Reller MD, Maylie J, Morton MJ, Thornburg KL. Right ventricular systolic pressure load alters myocyte maturation in fetal sheep. *Am J Physiol Regul Integr Comp Physiol*. 2000;279:R1157–R1164.
  32. Schulze PC, Kratzsch J, Linke A, Schoene N, Adams V, Gielen S, Erbs S, Moebius-Winkler S, Schuler G. Elevated serum levels of leptin and soluble leptin receptor in patients with advanced chronic heart failure. *Eur J Heart Fail*. 2003;5:33–40.
  33. Aiken CE, Ozanne SE. Sex differences in developmental programming models. *Reproduction*. 2013;145:R1–13.
  34. Grove KL, Grayson BE, Glavas MM, Xiao XQ, Smith MS. Development of metabolic systems. *Physiol Behav*. 2005;86:646–660.
  35. Catalano PM, Presley L, Minium J, Hauguel-de Mouzon S. Fetuses of obese mothers develop insulin resistance in utero. *Diabetes Care*. 2009;32:1076–1080.
  36. Lindsay RS, Nelson SM, Walker JD, Greene SA, Milne G, Sattar N, Pearson DW. Programming of adiposity in offspring of mothers with type 1 diabetes at age 7 years. *Diabetes Care*. 2010;33:1080–1085.
  37. Ye ZY, Li DP. Activation of the melanocortin-4 receptor causes enhanced excitation in presympathetic paraventricular neurons in obese Zucker rats. *Regul Pept*. 2011;166:112–120.

## Novelty and Significance

### What Is New?

- Neonatal exposure to hyperleptinemia in rodents leads to early onset hypertension, hyperphagia, and cardiac dysfunction, before the development of hyperleptinemia and obesity.
- Hyperleptinemia in the immediate postnatal period leads to an adult phenotype similar to that described in offspring of obese rodents.
- Increased leptin exposure secondary to maternal obesity may predispose to early hypertension and heart failure.

### What Is Relevant?

- High leptin concentrations, secondary to maternal obesity might constitute a cardiovascular risk for the offspring.

- This study suggests 1 potential mechanism for the development of early essential hypertension.

### Summary

Neonatal hyperleptinemia plays an important role in the developmental origin of hypertension, secondary to maternal obesity in rodents. Exposure to leptin during critical periods of development also influences cardiac structure and function in a way which may predispose to heart failure in adulthood.



## Experimental Hyperleptinemia in Neonatal Rats Leads to Selective Leptin Responsiveness, Hypertension, and Altered Myocardial Function

Anne-Maj Samuelsson, James Clark, Olena Rudyk, Michael J. Shattock, Sung Eun Bae, Timothy South, Joaquim Pombo, Kathrine Redington, Esna Uppal, Clive W. Coen, Lucilla Poston and Paul D. Taylor

*Hypertension*. 2013;62:627-633; originally published online July 8, 2013;

doi: 10.1161/HYPERTENSIONAHA.111.00691

*Hypertension* is published by the American Heart Association, 7272 Greenville Avenue, Dallas, TX 75231

Copyright © 2013 American Heart Association, Inc. All rights reserved.

Print ISSN: 0194-911X. Online ISSN: 1524-4563

The online version of this article, along with updated information and services, is located on the World Wide Web at:

<http://hyper.ahajournals.org/content/62/3/627>

Data Supplement (unedited) at:

<http://hyper.ahajournals.org/content/suppl/2013/07/08/HYPERTENSIONAHA.111.00691.DC1.html>

**Permissions:** Requests for permissions to reproduce figures, tables, or portions of articles originally published in *Hypertension* can be obtained via RightsLink, a service of the Copyright Clearance Center, not the Editorial Office. Once the online version of the published article for which permission is being requested is located, click Request Permissions in the middle column of the Web page under Services. Further information about this process is available in the [Permissions and Rights Question and Answer](#) document.

**Reprints:** Information about reprints can be found online at:

<http://www.lww.com/reprints>

**Subscriptions:** Information about subscribing to *Hypertension* is online at:

<http://hyper.ahajournals.org/subscriptions/>

1  
2  
3  
4  
5  
6  
7  
8  
9  
10  
11  
12  
13  
14

**ONLINE SUPPLEMENT**

**Experimental Hyperleptinemia in Neonatal Rats Leads to Selective Leptin Responsivness,  
Hypertension and Altered Myocardial Function**

**AUTHORS:** Anne-Maj Samuelsson<sup>a</sup>, James Clark<sup>b</sup>, Olena Rudyk<sup>b</sup>, Michael J Shattock<sup>b</sup>,  
Sung Eun Bae<sup>a</sup>, Timothy South<sup>a</sup>, Joaquim Pombo<sup>a</sup>, Kathrine Redington<sup>a</sup>, Esna Uppal<sup>a</sup>,  
Clive W Coen<sup>a</sup>, Lucilla Poston<sup>a</sup>, Paul D Taylor<sup>a</sup>

<sup>a</sup>Division of Women's Health, Women's Health Academic Centre KHP, King's College  
London, London, UK. <sup>b</sup>Cardiovascular Division, King's College London, UK

1 **Expanded Materials and Methods**

2 **Telemetry and heart rate variability**

3 Baseline systolic blood pressure (SBP), mean arterial pressure (MAP), diastolic blood  
4 pressure (DBP), heart rate (HR) and physical activity were measured in S-Tx and L-Tx rats at  
5 30 days and 2 months of age using radiotelemetry.<sup>1</sup> Briefly, rats were anesthetized with 2 %  
6 isoflourane in O<sub>2</sub> at 2 l per minute with pre- and post-operative analgesia (buprenorphine, 0.1  
7 mg kg<sup>-1</sup>S.C.). In juvenile rats (23 days), a small transmitter designed for the mouse (DSI  
8 PhysioTel® PA-C10) was implanted in the aortic arch via the left carotid artery.<sup>2</sup> In adult  
9 rats (50 days), the standard rat telemetry blood pressure probe (DSI PhysioTel® PA-C40;  
10 Data Sciences International) was placed in the descending abdominal aorta as previously  
11 described.<sup>3</sup> Following one week of recovery, rats housed in individual cages were placed  
12 above the telemetric receiver. Cardiovascular variables and physical activity were routinely  
13 monitored in a quiet room by scheduled sampling for 10 seconds every 5 minutes with A.R.T.  
14 10 software (Dataquest 3.01, DSI, St Pauls, MN). Data reported are for a single 24 hour  
15 period.

16 Heart rate variability (HRV) was analysed from a 300 seconds continuous telemetric BP  
17 record (HR derived from pressure waves) using spectral analysis. Data sets recorded in a  
18 sinus rhythm with sampling frequency 500 Hz were used. Time and frequency domain of  
19 HRV analysis were performed using HRV module of Chart 5.0 analysing software  
20 (ADInstruments, Colorado Springs, CO). Ectopics and visible short artefacts were manually  
21 excluded or replaced by intervals linearly interpolated from the nearest normal interval to  
22 avoid discontinuity in the record. Spectral powers of BP signals were analysed with the  
23 LabVIEW 7.1 (National Instruments, MA). Spectral segments were set to 0.20-0.60 Hz for  
24 low frequency (LF), which is an index of both sympathetic and parasympathetic activity, and  
25 0.6-2.5 Hz for high frequency (HF), which is an index of parasympathetic nervous activity.<sup>4</sup>  
26 The power and frequency of every spectral component are presented in absolute units.

27 Power (in m<sup>2</sup>) was estimated as the area under the spectrum within these frequency ranges.  
28 Beat-by-beat time series of blood pressure waveform were generated, and series of pulse  
29 intervals (PI) were obtained by measuring the intervals between consecutive BP waves. In the  
30 time-domain, the following indices were obtained: R-R (mean R-R interval), SDNN  
31 (standard deviation of normalised R-R intervals) and RMSSD (root mean square of  
32 successive differences of R-R intervals).

33 **Cardiovascular responses to restrain stress and adrenergic receptor blockade**

34 Telemetered animals were subjected to stress using a humane Perspex whole body restraining  
35 cylinder. The size of the cylinder was selected according to body size. Cardiovascular  
36 parameters were recorded in animals 30 minutes before the stress, 20 minutes during the  
37 stress and for 120 minutes after return to the home cage. Experiments were performed  
38 between 0900 and 1000 hours. Scheduled sampling was implemented for 10 seconds every  
39 minute (Dataquest LabPRO Aquisition System version 3.01, DSI, St Pauls, MN).

40 Two days after the stress test a sub-group of animals received a combination of the  $\alpha 1$   
41 adrenergic receptor antagonist, terazosin (10mg/kg, i.p), plus the  $\beta 1/\beta 2$  adrenergic receptor  
42 antagonist, propranolol (10mg/kg, i.p, Sigma –Aldrich Ltd, Poole, UK). Cardiovascular  
43 parameters were recorded for 30 minutes before the injection (baseline) and then for 10

1 seconds every minute for 2 hours after the injection. The receptor blockade achieved with this  
2 protocol has been previously demonstrated.<sup>5</sup>

### 3 **Cardiovascular response to leptin**

4 Randomly selected age-matched littermates were given a single bolus dose of IP leptin (10  
5 mg/kg BW; PeproTech) or vehicle. The pressor effects were assessed before and 6 hours after  
6 injection, using scheduled sampling (10 seconds every 15 minutes).

### 7 **Echocardiography**

8 Prior to the imaging studies, the rat was anesthetized (2-3% isoflurane mixed with 0.5 L/min  
9 100% O<sub>2</sub>) in the induction chamber. The investigator was blind as to whether the animals had  
10 been treated with saline or leptin in the neonatal period. After loss of the righting reflex, animals  
11 were placed on a warming platform and an appropriately sized nose cone was placed over the  
12 animal's nose. Anaesthesia was maintained using 0.5-1% isoflurane. Temperature was  
13 monitored with a rectal thermometer and maintained ~37 °C. Echocardiograms were  
14 performed using a Vevo 770 High Resolution Imaging System (VisualSonics, Toronto, ON,  
15 Canada) with a RMV-707B transducer running at 30MHz (in juvenile rats) and a RMV701B  
16 transducer running at 28MHz for the adult rats. High-resolution, 2- dimensional B-mode and  
17 M-mode images at the level of the papillary muscles were acquired. The following  
18 parameters were assessed in end-systolic and end-diastolic situation: thickness of the  
19 interventricular septum (IVS), left ventricle posterior wall thickness (LVPW), left ventricle  
20 inner diameter (LVID) and left ventricle volume (LVVol). Ejection fraction (EF), fractional  
21 shortening (FS), stroke volume (SV) and cardiac output (CO) were calculated with Vevo  
22 Software (VisualSonics). Measurements were made of the interventricular septum in diastole,  
23 left ventricular internal dimension in diastole, left ventricular internal dimension in systole  
24 and left ventricular posterior wall in diastole. These measurements were then used to  
25 calculate the left ventricular fractional shortening (FS), ejection fraction (EF), stroke volume  
26 (SV) and cardiac output (CO). Measurements were made in accordance with the American  
27 Society for Echocardiography Guidelines.<sup>6</sup>

### 28 **Isolated Perfused Heart Preparation**

29 At the age of 30 days or 5 months, hearts were excised and studied in a Langendorff isolated  
30 heart preparations. Age-matched rats were anesthetised with sodium pentobarbital (200  
31 mg/kg and 200 IU/kg, respectively, ip). Hearts were rapidly excised, placed in cold Krebs-  
32 Henseleit buffer (KHB) and cannulated via the aorta. Hearts were then perfused with  
33 oxygenated (95% O<sub>2</sub> and 5% CO<sub>2</sub>) KHB at 37.0°C (pH 7.4) in a retrograde Langendorff  
34 perfusion system at a constant pressure equivalent to 72±1 mmHg using a peristaltic pump  
35 and a feedback-system controlled by an STH Pump Controller (AD Instruments, Aus). The  
36 KHB contained (in mM) 118.5 NaCl, 4.7 KCl, 1.18 KH<sub>2</sub>PO<sub>4</sub>, 25.0 NaHCO<sub>3</sub>, 1.2 MgCl<sub>2</sub>, 1.4  
37 CaCl<sub>2</sub> and 11.1 glucose. Measures of cardiac contractile function, such as left ventricular  
38 developed pressure (LVDP) and HR, were performed with a liquid-filled balloon inserted  
39 into the left ventricle. After the baseline was established (~25 minutes), the pressure-volume  
40 Frank-Starling response was assessed by increasing the balloon volume in 20µl increments  
41 every minute, using a pre-calibrated syringe, until the new steady state was reached. The  
42 assessment of the Frank-Starling response was completed within 15 minutes and the balloon  
43 was deflated to the baseline level (left ventricle developed pressure, LVEDP, between 4-8  
44 mmHg) for 5 minutes. Hearts were then perfused with KHB with isoprenaline (10nM) for  
45 further 15 minutes.

1 **Immunohistochemistry**

2 Immediately after euthanasia at postnatal day 30, the heart was snap-frozen in an isopentane-  
3 dry ice slurry and stored at -80°C. The cardiac ventricles were cut (at 7µm) with a cryostat in  
4 horizontal sections at the midventricular short axis, mounted on poly-lysine-coated glass  
5 slides and fixed with ice-cold 4% PFA for 15 minutes. After removal of the fixative, sections  
6 were permeabilized by the addition of 0.1% Triton-X-20 in PBS (Sigma-Aldrich, UK).  
7 Sections were then incubated overnight at room temperature with a rabbit anti-laminin  
8 (1:300, DakoCytomation, Glostrup, DE). Slides were then washed 3 times for 5 minutes with  
9 0.1% Triton-X-20 in PBS. A secondary antibody, fluorescein (FITC)-conjugated goat anti-  
10 rabbit IgG (1:400, Invitrogen, Carlsbad, CA) was applied for 2 hours then washed 3 times.  
11 Slides were cover-slipped and examined by a fluorescence light microscope.

12 **Image Acquisition**

13 Laminin stained sections were used to quantify cardiomyocyte cross-sectional area (CSA)  
14 and number. Digital images for laminin (green) staining were captured at x40 objective from  
15 two non-overlapping fields (left ventricle) from each section (4 adjacent sections per heart),  
16 using the AxioCam CCD digital camera (Carl Zeiss, Oberkochen, Germany) mounted to an  
17 inverted epifluorescence microscope (AxioVert 135; Carl Zeiss). The CSA of individual  
18 cardiomyocytes was quantified as previously described.<sup>7</sup> For cell size, CSA was outlined  
19 from 100 measurements per animal, 4 sections per animal, by two independent investigators  
20 blind to the animal group. For cell number, myocytes were counted from 6 randomly selected  
21 fields (x40 objective) per section, 4 sections per animals and expressed as number of  
22 myocytes per unit area (1mm<sup>2</sup>).

23 **Test for Fibrosis**

24 Hearts were isolated and fixed with 4% formaldehyde, dehydrated and embedded in paraffin.  
25 Global heart architecture was determined from 5µm deparaffinized sections stained with  
26 hematoxylin and eosin (H&E). The possible presence of fibrosis was checked with Masson's  
27 Trichrome staining.

28  
29

1 **References**

- 2 **1.** Samuelsson AM, Morris A, Igosheva N, Kirk SL, Pombo JM, Coen CW, Poston L,  
3 Taylor PD. Evidence for sympathetic origins of hypertension in juvenile offspring of  
4 obese rats. *Hypertension*. 2010;55:76-82.
- 5 **2.** Samuelsson AM, Matthews PA, Argenton M, Christie MR, McConnell JM, Jansen  
6 EH, Piersma AH, Ozanne SE, Twinn DF, Remacle C, Rowlerson A, Poston L, Taylor  
7 PD. Diet-induced obesity in female mice leads to offspring hyperphagia, adiposity,  
8 hypertension, and insulin resistance: a novel murine model of developmental  
9 programming. *Hypertension*. 2008;51:383-392.
- 10 **3.** Khan IY, Taylor PD, Dekou V, Seed PT, Lakasing L, Graham D, Dominiczak AF,  
11 Hanson MA, Poston L. Gender-linked hypertension in offspring of lard-fed pregnant  
12 rats. *Hypertension*. 2003;41:168-175.
- 13 **4.** Souza HC, Ballejo G, Salgado MC, Da Silva VJ, Salgado HC. Cardiac sympathetic  
14 overactivity and decreased baroreflex sensitivity in L-NAME hypertensive rats. *Am J*  
15 *Physiol Heart Circ Physiol*. 2001;280:H844-850.
- 16 **5.** da Silva AA, do Carmo JM, Kanyicska B, Dubinion J, Brandon E, Hall JE.  
17 Endogenous melanocortin system activity contributes to the elevated arterial pressure  
18 in spontaneously hypertensive rats. *Hypertension*. 2008;51:884-890.
- 19 **6.** Kiessling F BP. *Small Animal Imaging: Basics and Practical Guide*. Berlin: Springer;  
20 2011.
- 21 **7.** Agle CC, Velloso CP, Lazarus NR, Harridge SD. An image analysis method for the  
22 precise selection and quantitation of fluorescently labeled cellular constituents:  
23 application to the measurement of human muscle cells in culture. *J Histochem*  
24 *Cytochem*. 2012;60:428-438.

**Tables and Figures**

Table S1. Body weight, inguinal WAT, and heart -weight in 30 day- old male and female rats treated with saline (S-Tx) or leptin (L-Tx) in neonatal period.

Weight	Male		Female	
	S-Tx	L-Tx	S-Tx	L-Tx
<b>Body weight (g)</b>	63.5±2.6	65.2±1.2	62.0±1.1	63.5±1.9
<b>Inguinal WAT (g)</b>	0.18±0.03	0.20±0.03	0.15±0.03	0.14±0.01
<b>Heart weight (g)</b>	0.35±0.02	0.41±0.01*	0.35±0.01	0.42±0.01*
<b>Liver weight (g)</b>	2.53±0.13	2.58±0.10	2.33±0.10	2.60±0.32
<b>Heart weight (g/kg BW)</b>	5.53±0.17	6.34±0.28*	5.64±0.18	6.52±0.09*
<b>Liver weight (g/kg BW)</b>	40.2±2.9	39.1±1.7	38.7±2.0	42.3±2.6

Values given as mean± SEM \* $P < 0.05$  versus saline treated using *t*-test,  $n = 4-8$ .

Table S2. Body weight, inguinal WAT, heart, and liver weight in 2 and 12 month old male and female rats treated with saline or leptin in neonatal period.

Weight	2 months				12 months			
	Male		Female		Male		Female	
	S-Tx	L-Tx	S-Tx	L-Tx	S-Tx	L-Tx	S-Tx	L-Tx
<b>BW (g)</b>	222.9±6.9	238.2±12.1	188.5±10.9	194.9±9.19	600.0±29.6	631.3±23.7	346.8±7.2	402.2±17.2†
<b>Inguinal WAT (g)</b>	1.32±0.15	2.03±0.35*	1.01±0.15	1.86±0.05†	5.31±0.41	9.25±1.21†	5.23±0.76	12.3±1.35‡
<b>Heart weight (g)</b>	0.87±0.02	1.12±0.09*	0.71±0.02	0.82±0.03*	1.61±0.03	1.77±0.03*	1.19±0.03	1.56±0.10†
<b>Liver weight (g)</b>	9.08±0.29	8.82±0.29	7.35±0.79	7.57±0.79	16.81±0.42	19.12±1.00	9.16±0.60	10.77±0.05

\*P<0.05, †P<0.01, ‡P<0.001 versus saline treated using t-test, n=4-8. Abbreviation S-Tx saline treated, L-Tx leptin treated, BW body weight, WAT white adipose tissue.



Table S3. Heart rate variability in 30 day- and 2 month old male and female rats treated with saline or leptin in neonatal period.

Parameters	30 days				2 months	
	Male		Female		Male + Female	
	S-Tx	L-Tx	S-Tx	L-Tx	S-Tx	L-Tx
<b>SDNN (ms)</b>	7.9±1.3	4.8±0.8	3.4±0.4	2.7±0.5	8.1±0.3	3.2±0.2*
<b>RMSSD (ms)</b>	3.6±0.5	3.1±1.2	3.1±0.4	2.0±0.6	2.9±0.6	2.4±0.3
<b>AverageHR (bpm)</b>	372.3±9.1	370.1±7.7	342.0±9.9	342.0±15.1	400.1±10.2	406.2±4.1
<b>RR (mean m<sup>2</sup>)</b>	161.5±4.0	162.3±3.5	175.6±4.9	172.9±7.5	149.2±3.1	138.2±0.9
<b>LF (ms<sup>2</sup>)</b>	4.8±1.6	6.8±1.7	0.7±0.3	1.0±0.5	3.2±0.4	9.2±0.1*
<b>HF (ms<sup>2</sup>)</b>	9.5±4.2	8.5±4.2	3.6±0.9	2.3±1.2	6.5±1.2	3.2±0.3*
<b>LF/HF</b>	0.6±0.1	0.8±0.1*	0.2±0.1	0.5±0.1*	0.5±0.1	2.9±0.1‡

Values given as mean± SEM \*P<0.05, ‡P<0.001, versus saline treated using t-test, n=6-8 for leptin treated L-Tx versus saline treated S-Tx, using t-test, n=4-8. Time and frequency domains of the heart rate (HR) variability identify differences in the high frequency domain (HF; 0.60-2.5 Hz), corresponding to parasympathetic activity, and in the low frequency domain (LF, 0.20-0.60 Hz) corresponding to preliminary sympathetic activity. <sup>4</sup> Power (in m<sup>2</sup>) was estimated as the area under the spectrum within these frequency ranges. Beat-by beat time series of blood pressure waveform were generated, and series of pulse intervals (PI) were obtained by measuring the intervals between consecutive BP waves. In the time-domain, the following indices were obtained: R-R (mean RR interval), SDNN (standard deviation of normalised R-R intervals) and RMSSD (root mean square of successive differences of R-R intervals).

Table S4. Echocardiographic parameters measured in 30 day old male and female rats treated with saline or leptin in neonatal period.

Structure & Function	Male		Female	
	S-Tx	L-Tx	S-Tx	L-Tx
<b>LVmass (mg)</b>	282.8±10.0	281.6±12.0	284.1±13.9	271.6±10.5
<b>LVVol;d (µl)</b>	151.0±11.0	157.4±3.7	147.8±5.0	144.1±7.7
<b>LVVol;s (µl)</b>	43.3±7.02	38.8±2.3	28.8±2.3	34.8±3.1*
<b>LVIDd (mm)</b>	5.4±0.08	5.5±0.09	5.2±0.07	5.2±0.09
<b>LVIDs (mm)</b>	3.3±0.11	3.3±0.07	2.8±0.04	3.2±0.14*
<b>LVPWd (mm)</b>	1.3±0.03	1.2±0.07	1.3±0.03	1.2±0.04
<b>LVPWs (mm)</b>	1.9±0.13	2.0±0.10	2.0±0.08	1.8±0.11
<b>SV (µl)</b>	107.6±5.4	118.6±2.7	118.9±5.2	109.3±5.9
<b>EF (%)</b>	67.6±2.0	69.7±0.9	75.7±1.0	67.9±2.6*
<b>FS (%)</b>	38.2±1.6	39.8±0.7	45.0±1.0	38.5±2.0*
<b>CO (ml/min)</b>	43.7±2.7	46.5±1.8	52.6±2.9	45.8±2.8
<b>HR (bpm)</b>	406±9	395±9	438±13	420±11

Values are given as mean ± SEM \*P<0.05 versus saline treated by t-test, n=4-8. Abbreviation S-Tx saline treated, L-Tx leptin treated. Left ventricular anterior wall at diastole (LVAW:d); Left ventricular anterior wall at systole (LVAW:s); Left ventricular internal dimension at diastole (LVID:d); Left ventricular internal dimension at systole (LVID:s); Left ventricular posterior wall at diastole (LVPW:d); Left ventricular posterior wall at systole (LVPW:s); From the PLAX view, the following measurements were obtained Intraventricular septum at diastole (IVS:d), mm; Intraventricular septum at systole (IVS:s), mm; Left ventricular internal dimension at diastole (LVID:d), mm; Left ventricular internal dimension at systole (LVID:s), mm; Left ventricular posterior wall at diastole (LVPW:d), mm; Left ventricular posterior wall at systole (LVPW:s), mm; Left ventricular internal volume at diastole (LVVol:d), ml; Left ventricular internal volume at systole (LVVol:s), ml; Stroke volume (SV), ml/min; Ejection Fraction (EF), %; Fractional Shortening (FS), %; Cardiac Output (CO).

Table S5. Echocardiographic parameters measured in 12 month old male and female rats treated with saline or leptin in neonatal period.

Structure & Function	Male		Female	
	S-Tx	L-Tx	S-Tx	L-Tx
<b>LVmass (mg)</b>	949.3±57.0	1217.6±45.1*	790.3±20.8	1005.3±72.5*
<b>LVVol;d (µl)</b>	316.1±45.9	378.3±59.6	345.8±6.6	392.7±26.9
<b>LVVol;s (µl)</b>	112.5±8.3	150.7±33.9	101.3±5.3	155.2±25.9*
<b>LVIDd (mm)</b>	7.8±0.22	8.9±0.05*	4.7±0.13	8.0±0.12
<b>LVIDs (mm)</b>	5.0±0.05	5.7±0.26	4.7±0.13	5.3±0.13*
<b>LVPWd (mm)</b>	2.0±0.04	2.0±0.18	1.8±0.04	2.2±0.15*
<b>LVPWs (mm)</b>	3.0±0.15	3.0±0.13	2.9±0.19	2.9±0.13
<b>SV (µl)</b>	203.7±37.8	227.6±28.2	244.5±3.4	237.6±15.2
<b>EF (%)</b>	63.5±3.2	61.1±3.8	70.8±1.1	61.1±4.8*
<b>FS (%)</b>	36.0±2.5	34.3±2.6	41.7±1.0	34.6±3.6*
<b>CO (ml/min)</b>	75.9±16.3	75.3±10.4	77.4±2.6	77.9±6.1
<b>HR (bpm)</b>	370.3±24	329±12	317±13	327±9

Values are given as mean ± SEM \*P<0.05 versus saline treated by t-test, n=3-6. Abbreviation S-Tx saline treated, L-Tx leptin treated. Left ventricular anterior wall at diastole (LVAW:d); Left ventricular anterior wall at systole (LVAW:s); Left ventricular internal dimension at diastole (LVID:d); Left ventricular internal dimension at systole (LVID:s); Left ventricular posterior wall at diastole (LVPW:d); Left ventricular posterior wall at systole (LVPW:s); From the PLAX view, the following measurements were obtained Intraventricular septum at diastole (IVS:d), mm; Intraventricular septum at systole (IVS:s), mm; Left ventricular internal dimension at diastole (LVID:d), mm; Left ventricular internal dimension at systole (LVID:s), mm; Left ventricular posterior wall at diastole (LVPW:d), mm; Left ventricular posterior wall at systole (LVPW:s), mm; Left ventricular internal volume at diastole (LVVol:d), ml; Left ventricular internal volume at systole (LVVol:s), ml; Stroke volume (SV), ml/min; Ejection Fraction (EF), %; Fractional Shortening (FS), %; Cardiac Output (CO).

Figure S1

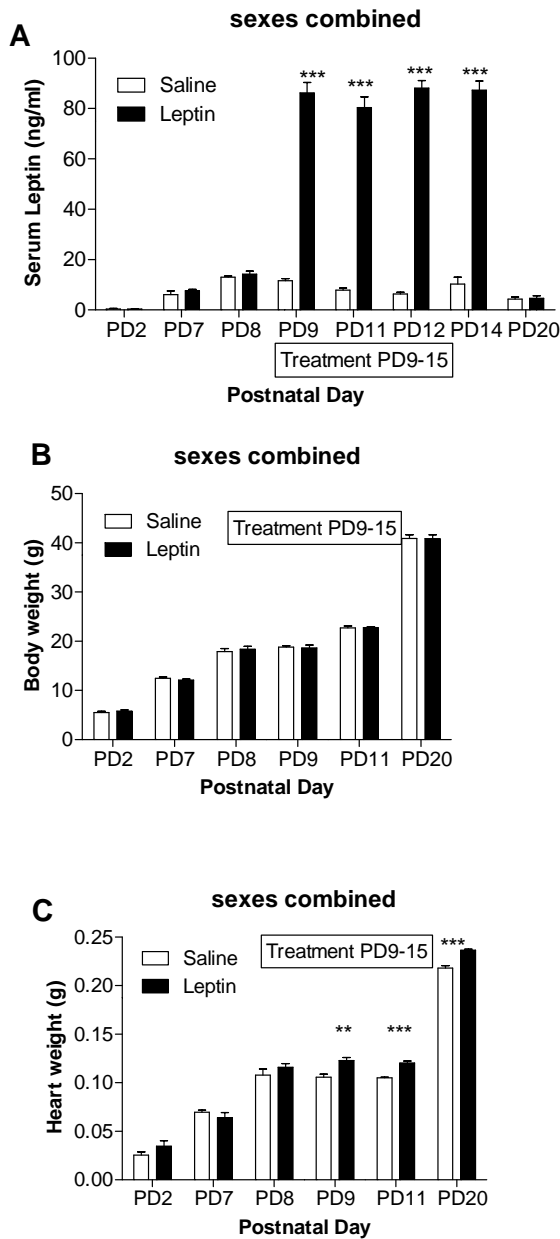


Figure S1. Neonatal serum leptin concentration (A), body weight (B) and heart weight (C) in leptin (3 mg/kg ip) and saline treated pups (male and female combined). \*\*\*P<0.001, \*\*P<0.01 versus saline using t-test, n=4-7.

Figure S2

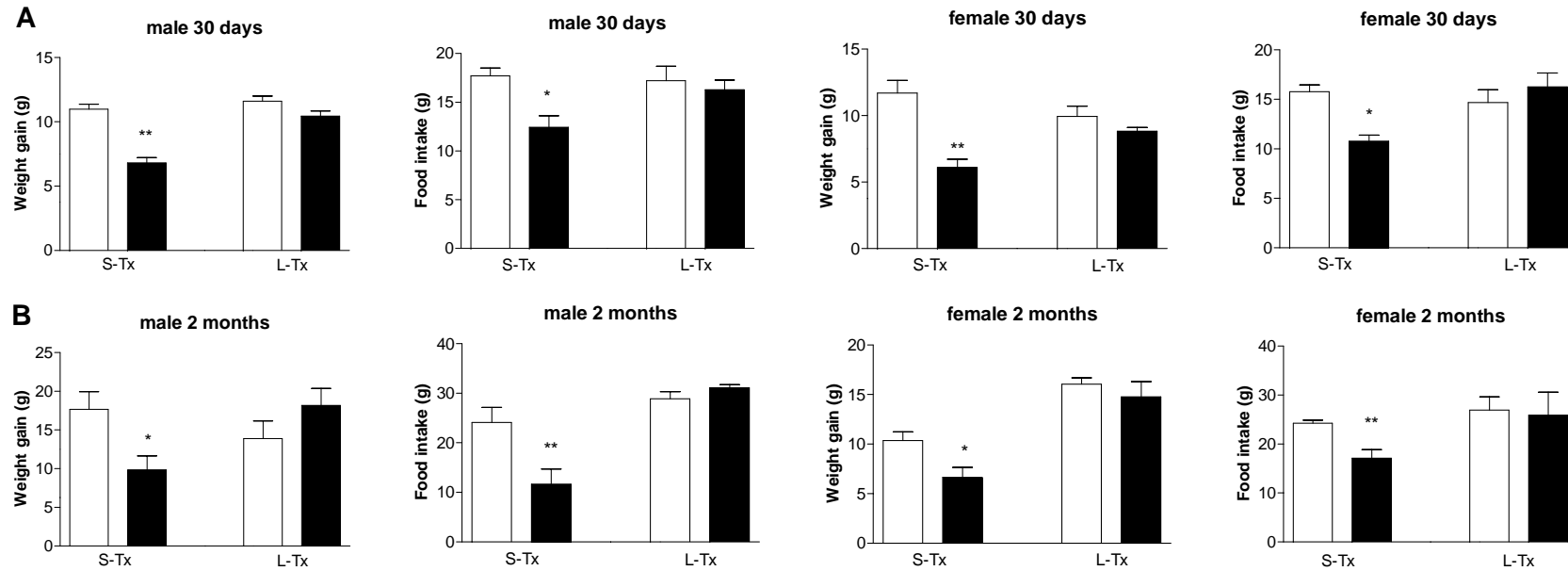


Figure S2. Weight gain and food intake recorded over 24 hours following a bolus leptin challenge (10 mg/kg i.p.) in saline-treated (S-Tx) or leptin-treated (L-Tx) male and female rats following an overnight fast at (A) 30 days and (B) 2 months of age. \*\*\*P<0.001, \*\*P<0.01, \*P<0.05 versus saline injection using t-test, n=4-8 Abbreviation S-Tx-saline treated; L-Tx-leptin treated

Figure S3

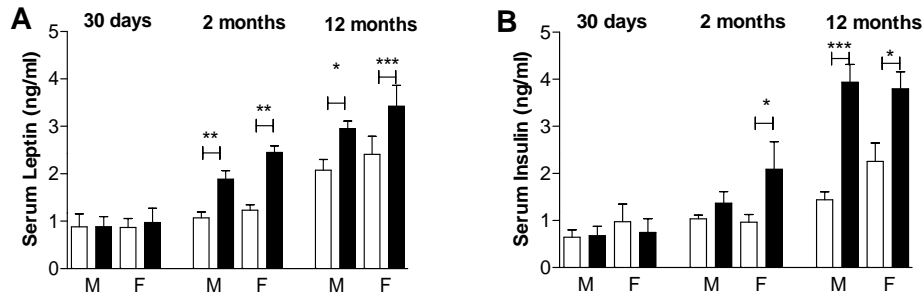


Figure S3. Serum leptin (A) and insulin (B) concentrations in saline-treated (open bars) or leptin-treated (closed bars) male and female rats at 30 days, 2 months and 12 months of age. \*\*\*P<0.001, \*\*P<0.01, \*P<0.05 versus saline using t-test, n=5-8. Abbreviation M-male: F-female.

Figure S4

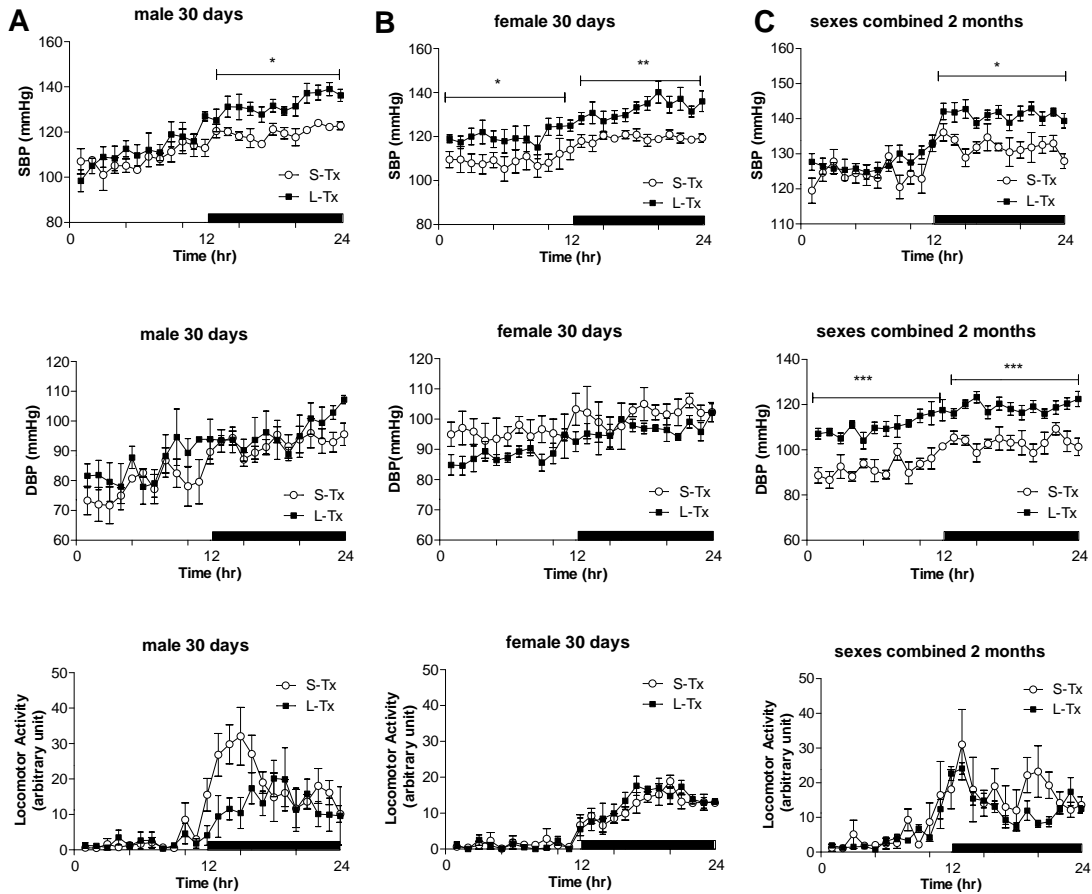


Figure S4. Systolic blood pressure (SBP), Diastolic blood pressure (DBP) and Spontaneous Locomotor Activity (arbitrary units) in 30 day old saline-treated (open circles) or leptin-treated (closed circles) male (A) and female (B) rats and 2 month old male and female rats combined (C). \*\*\* $P < 0.001$ , \*\* $P < 0.01$ , \* $P < 0.05$  versus saline using repeated ANOVA,  $n = 4-5$ . Abbreviation S-Tx-saline treated; L-Tx-leptin treated.

Figure S5

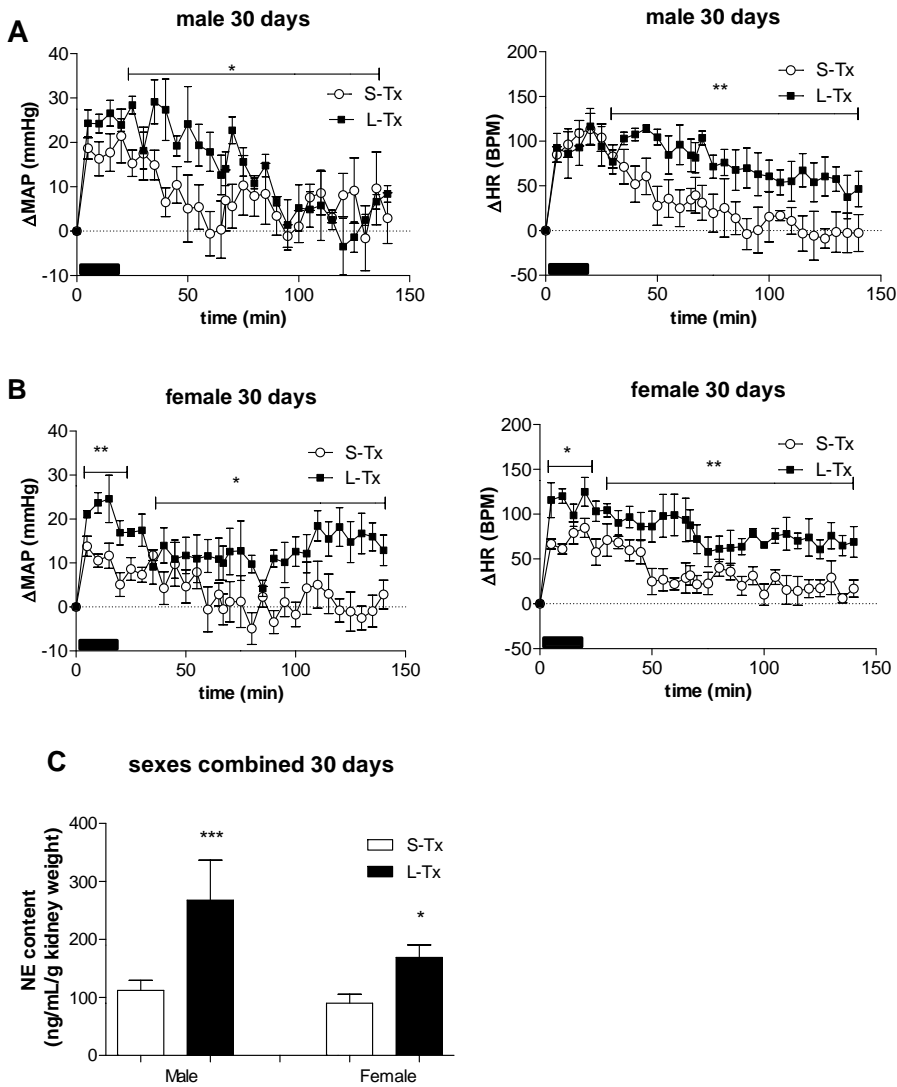


Figure S5. Mean arterial pressure (MAP) and heart rate (HR) response to restraint stress in 30 day old saline-treated (open circles) or leptin-treated (closed circles) male (A) and female (B) rats and renal NE content (C). \*\*\* $P < 0.001$ , \*\* $P < 0.01$ , \* $P < 0.05$  versus saline using repeated-measures ANOVA and t-test,  $n = 5-8$ . Abbreviation S-Tx-saline treated; L-Tx-leptin treated.



Figure S6

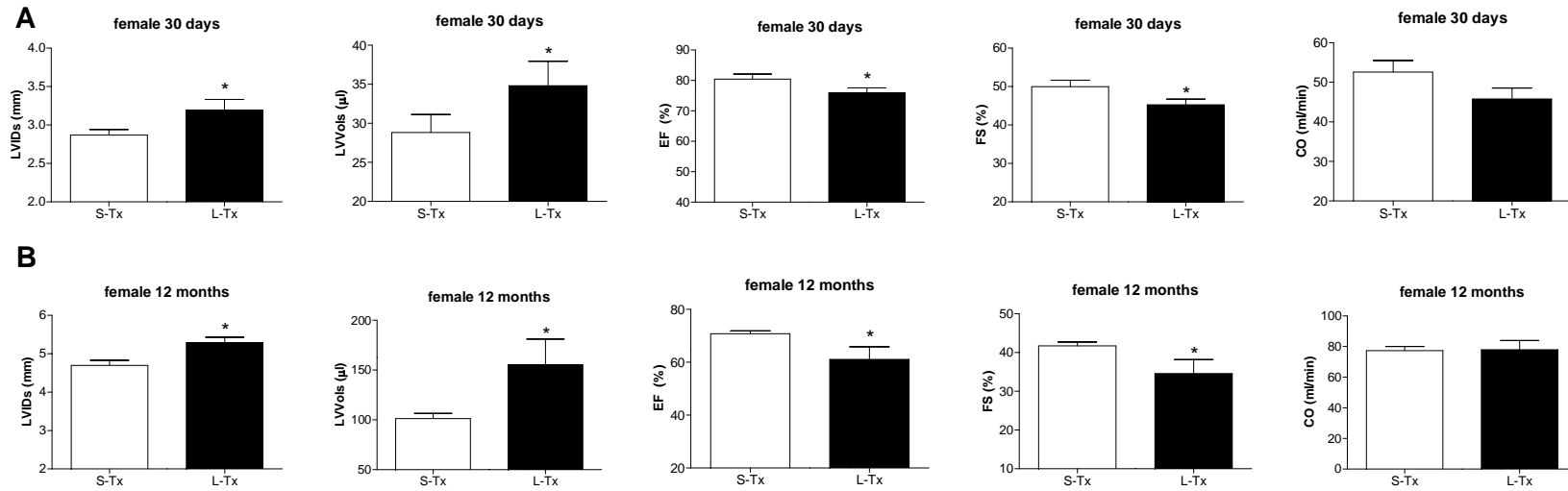


Figure S6. Cardiac structure and function from ultrasound analysis of saline-treated (open bars) and leptin-treated (closed bars) female rats at (A) 30 days and (B) 12 months of age. \* $P < 0.05$  versus saline using t-test,  $n = 4-6$ . Abbreviation S-Tx-saline treated; L-Tx-leptin treated.

Figure S7

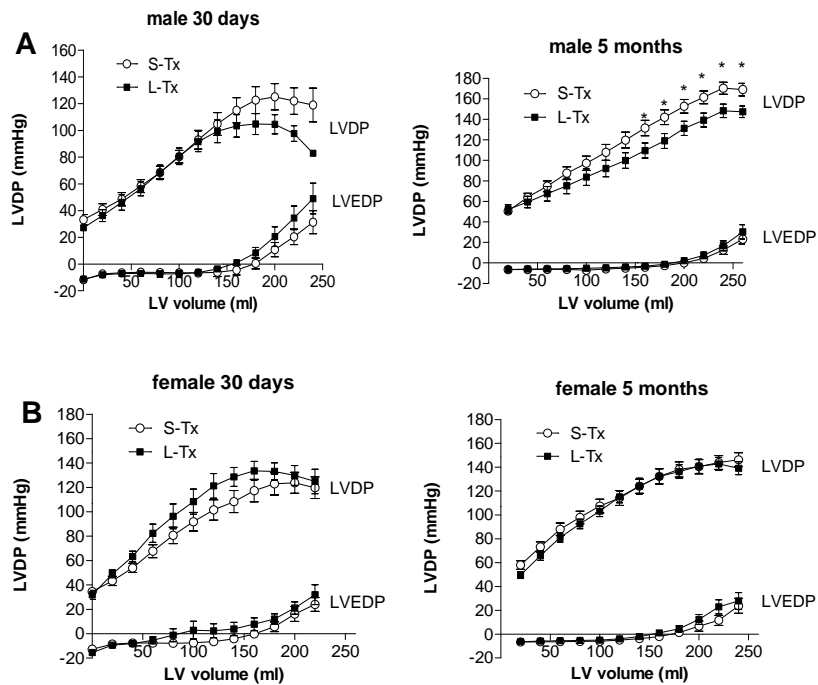


Figure S7. Frank-Starling response of isolated Langendorff perfused heart of saline-treated (open circles) or leptin-treated (closed circles) male (A) and female (B) rats at 30 days and 5 months of age. \* $P < 0.05$  versus saline using repeated t-test,  $n = 6-10$ . Abbreviation S-Tx-saline treated; L-Tx-leptin treated.

Figure S8

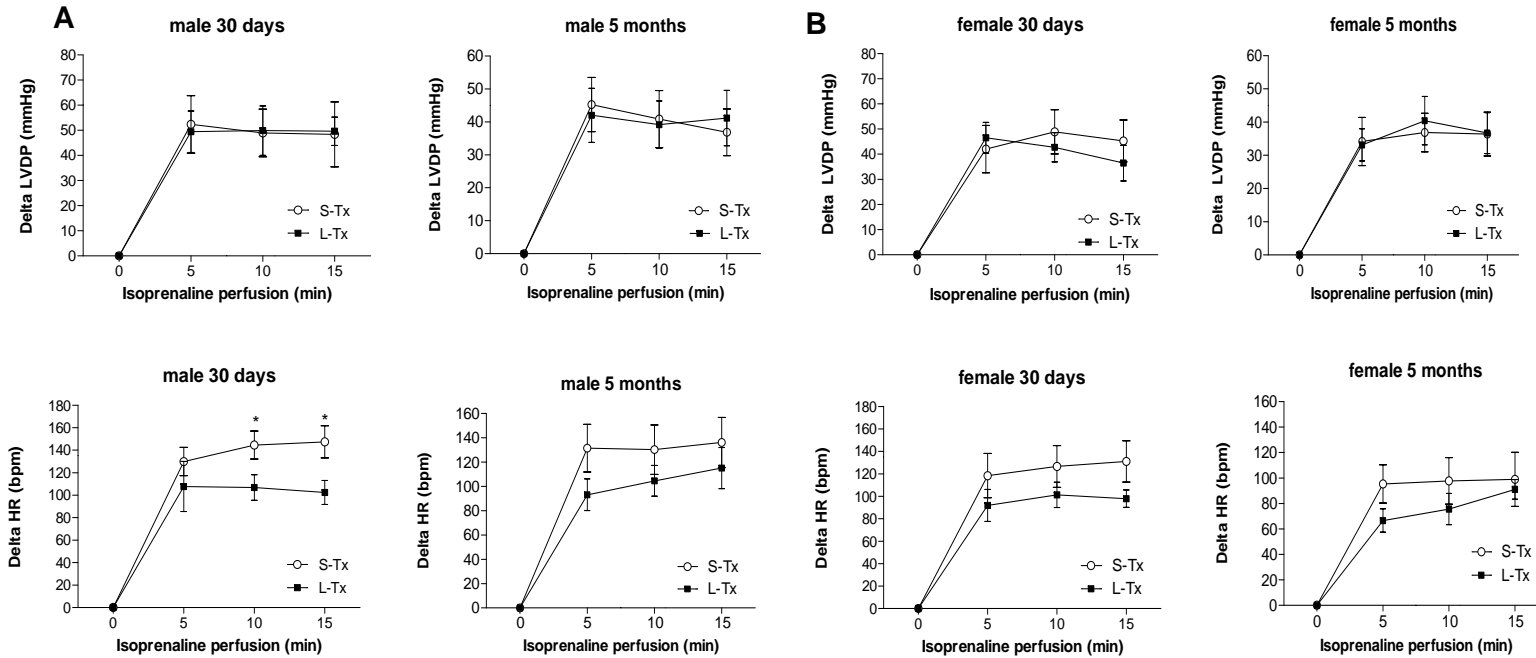


Figure S8. Frank-Starling response of isolated Langendorff perfused heart of saline-treated (open circles) or leptin treated (closed circles) male (A) and female (B) rats at 30 days and 5 months of age. \*P<0.05 versus saline using repeated t-test, n=6-10. Abbreviation S-Tx-saline treated; L-Tx-leptin treated.

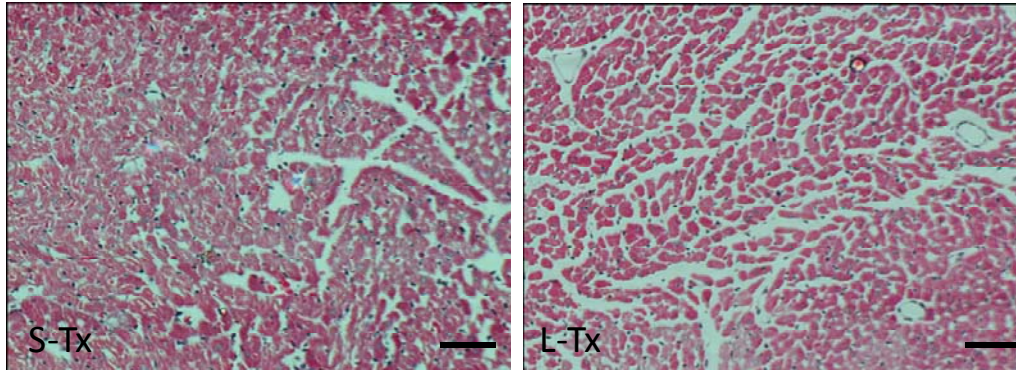


Figure S9. Representative images of H&E and Masson's Trichrome stained heart sections from 30 day old S-Tx and L-Tx rats. No fibrotic lesions were apparent. Scale bars: 100 $\mu$ m