





# Selection criteria for immediate implant placement and immediate loading for single tooth replacement in the maxillary esthetic zone: A systematic review and meta-analysis

Adam Hamilton<sup>1,2</sup>  | Luiz Gonzaga<sup>3</sup> | Karina Amorim<sup>3</sup> | Julia-Gabriela Wittneben<sup>4</sup> |  
Lukas Martig<sup>5</sup>  | Dean Morton<sup>6</sup>  | William Martin<sup>3</sup> | German O. Gallucci<sup>7</sup>  |  
Daniel Wismeijer<sup>8</sup>

<sup>1</sup>Division of Oral Restorative and Rehabilitative Sciences, University of Western Australia, Perth, Western Australia, Australia

<sup>2</sup>Division of Regenerative and Implant Sciences, Department of Restorative Dentistry and Biomaterials Sciences, Harvard School of Dental Medicine, Boston, Massachusetts, USA

<sup>3</sup>Center for Implant Dentistry, Department of Oral and Maxillofacial Surgery, College of Dentistry, University of Florida, Gainesville, Florida, USA

<sup>4</sup>Department of Reconstructive Dentistry and Gerodontology, University of Bern, Bern, Switzerland

<sup>5</sup>Significant Data Science, Bern, Switzerland

<sup>6</sup>Department of Prosthodontics, Indiana University School of Dentistry, Indianapolis, Indiana, USA

<sup>7</sup>Department of Restorative Dentistry and Biomaterials Sciences, Harvard School of Dental Medicine, Boston, Massachusetts, USA

<sup>8</sup>TPE, Private Practice, Ellecom, The Netherlands

## Correspondence

Adam Hamilton, Division of Oral Restorative and Rehabilitative Sciences, University of Western Australia Dental School, M512, 17 Monash Avenue, Nedlands, WA 6009, Australia.  
Email: [adam.hamilton2@uwa.edu.au](mailto:adam.hamilton2@uwa.edu.au)



## Abstract

**Objectives:** The aim of this study was to review available evidence for Type 1A (immediate implant placement and immediate loading) of single tooth replacement in the maxillary esthetic zone.

**Materials and Methods:** An electronic search was conducted utilizing the databases of MEDLINE, Embase, and Cochrane to identify publications reporting on the outcomes of Type 1A for single tooth replacement in the maxillary esthetic zone. The success and survival rates of the included articles were reported, which were further categorized according to the clinical criteria reported in Type 1A. Mean survival rates were univariately compared between risk groups and additionally between studies published before and since 2012 using bias-corrected and study size-weighted bootstrap tests. A study time-correcting meta-analysis was then performed to obtain an overall effect for the study pool.

**Results:** A total of 3118 publications were identified in the search, with a total of 68 articles included. A mean number of implants per study were 37.2 and mean follow-up was 2.8 years. All the included studies utilizing Type 1A report highly selective inclusion and exclusion criteria. Univariate risk group comparison determined that studies before 2012 report a significantly lower mean survival rate (difference of -1.9 percentage points [PP], 95% CI: [-0.3, -4.0],  $p = .02$ ), facial gap dimension had an impact on survival rates (+3.1 PP [0.2, 5.3] for width >2 mm,  $p = .04$ ), as well as presence of endodontic infection (+2.6 PP [0.9, 5.1],  $p = .004$ ).

**Conclusions:** Type 1A has a high survival rate in studies reporting strict patient and site selection criteria. Further research is required to assess esthetic and functional success with Type 1A treatments.

## KEYWORDS

dental implants, immediate dental implant loading, immediate dental implant placement, meta-analysis, systematic review

This is an open access article under the terms of the [Creative Commons Attribution-NonCommercial](https://creativecommons.org/licenses/by-nc/4.0/) License, which permits use, distribution and reproduction in any medium, provided the original work is properly cited and is not used for commercial purposes.

© 2023 The Authors. *Clinical Oral Implants Research* published by John Wiley & Sons Ltd.

## 1 | INTRODUCTION

The use of dental implants for the replacement of missing or failing teeth in partially edentulous patients has been shown to be a clinically predictable option (Jung et al., 2012). Original protocols recommended the placement of dental implants in healed alveolar ridges coupled with long healing periods prior to restoration and loading of the dental implant (Albrektsson et al., 1981). The current body of evidence provides encouraging data on the placement of implants at the time of tooth extraction and, in some situations, in conjunction with the connection of an immediately delivered implant-supported prosthesis (Buser et al., 2017; Gallucci et al., 2018; Kan et al., 2018; Seyssens et al., 2021, 2022; Zhou et al., 2021).

Dating back to 2003, the International Team for Implantology (ITI) has periodically revisited the classification for timing of implant placement and loading protocols (Chen et al., 2004; Chen & Buser, 2009; Hämmerle et al., 2004) in preparation for their consensus conferences. In the most recent consensus conference, a systematic review highlighted the connection and inseparability of outcomes with regard to implant placement and loading protocols (Gallucci et al., 2018). With this, Type 1A implant protocols are defined as immediate placement of an implant on the same day of tooth extraction and immediate restoration/loading on the same day or up to 1 week following implant placement (Gallucci et al., 2018).

Immediate placement and loading of an implant are most desirable as it has significant patient-centered advantages in reducing the overall treatment time as well as reducing the number of interventions and associated morbidity (Chen & Buser, 2009; Cosyn et al., 2019; Noelken et al., 2014; Slagter et al., 2014). Furthermore, it may assist in preserving the hard and soft tissue morphology through the use of a provisional restoration, aiding in achieving an ideal esthetic outcome (De Rouck et al., 2009; Kan et al., 2018; Kan & Rungcharassaeng, 2001; Puisys et al., 2022; Zhou et al., 2021).

However, Type 1A protocols can be challenging due to the complexity and technique sensitivity of the surgical procedures (Cosyn et al., 2019; Levine et al., 2017; Morton et al., 2018). There is evidence that shows there is a higher risk for early implant loss when an implant is immediately loaded (Schrott et al., 2014). It is common to find suggestions in the literature of factors that would contraindicate using Type 1A protocols, such as the presence of an active infection, soft tissue defects, thin tissue phenotype, lack of the socket's facial bone wall following extraction, and the absence of a facial gap between the implant and facial bone wall often known as the horizontal defect dimension (HDD; Araújo et al., 2022; Cochran & Douglas, 1993; Levine et al., 2022). Additionally, inferior outcomes related to the clinical, radiographic, and esthetic results can be obtained when those factors are present at the implant site (Chen et al., 2019; Cosyn et al., 2019; Sanz-Sánchez et al., 2015; Zhang et al., 2017).

Due to the available evidence from systematic reviews reporting on the success of Type 1A implant protocols, conservative criteria for their predictable implementation of Type 1A protocols were recommended (Morton et al., 2018). When following the recommended

criteria, very few patients and sites would be classified as suitable, therefore alternative protocols would be indicated. The scientific evidence to support such criteria requires periodic review to provide guidelines in managing sites that may present compromises in any of the individual criteria. It has also been reported that adjunctive procedures such as simultaneous socket grafting and/or connective tissue grafting in conjunction with Type 1A implant protocols could mitigate the associated esthetic risks following tooth extraction, however, these procedures carry their own inherent technical challenges (Araújo et al., 2022; Seyssens et al., 2021, 2022).

The complexity of treatment increases with the added risks associated with immediate loading; therefore, it is generally recommended to select this protocol only when patient-centered benefits are present (Morton et al., 2018). This is supported by the majority of literature that focuses on Type 1A protocols reported on implants placed in the anterior maxilla (Zhou et al., 2021). This has patient-centered advantages in addressing the psychosocial and esthetic effects of having a missing tooth in the esthetic zone (Gotfredsen et al., 2021; Huynh-Ba et al., 2018).

Despite the significant volume of literature addressing immediate implant placement and immediate loading, the survival rate of Type 1A protocols with regard to the characteristics of the patients and sites where the implant was placed and loaded has not been systematically reviewed. This systematic review aims to identify, review, analyze, and summarize the available evidence on the survival rate of immediate loading of an immediately placed implant in the maxillary esthetic zone. Furthermore, two approaches are shown and discussed on how to assess survival rates based on studies with different study duration. The null hypothesis for this study is that the patient and site selection criteria do not influence the overall survival rate of Type 1A implant protocols.

## 2 | MATERIALS AND METHODS

This systematic review was conducted following PRISMA (Preferred Reporting for Systematic Reviews and Meta-Analyses) guidelines (Liberati et al., 2009; Page et al., 2021). The study was registered with the International Prospective Register of Systematic Reviews (PROSPERO) database (CRD42021292749).

### 2.1 | Focus question

To identify studies for this review, the PICO question (population, intervention, comparison, and outcome) was formulated with patients who require replacement of a single tooth in the anterior maxilla (15–25 FDI) as the population; immediate implant placement and immediate loading with specific site selection criteria, such as intact socket walls, facial bone of at least 1 mm in thickness, no acute infection at the site, the availability of at least 3 mm of bone apical and lingual to the socket to provide primary stability, at least 35 Ncm insertion torque, and/or ISQ of 70; thick soft tissue phenotype as

the intervention; immediate implant placement and immediate loading without one or more site-specific factors for selection criteria as the comparison; and survival rate as the outcome. Thus, the PICO question was formulated: “In patients who require replacement of a single tooth in the anterior maxilla (15–25), does specific site selection criteria influence the survival outcome of an immediate implant placed with immediate loading?” The following sections provide a concise description of the specific methodological aspects of the study.

## 2.2 | Search strategy

The search strategy was developed using keywords and Mesh terms (Table 1). The electronic search was conducted utilizing the databases MEDLINE (PubMed), Embase, and Cochrane to identify publications in English up to January 14th, 2022. Due to the specificity of the PICO regarding the site selection, a comprehensive search strategy was formulated encompassing a complete list of articles for manual screening.

TABLE 1 Systematic search strategy for the focus question.

Focused question	Does the site selection influence the outcome of an immediate implant placed with immediate loading?	
PICO	Population	Patients who require replacement of a single tooth in the anterior maxilla 15–25 (FDI)
	Intervention	Immediate implant placement and immediate loading of single implant restorations using modern dental implants with a micro-rough surface with specific site selection criteria, including: <ul style="list-style-type: none"> <li>• Intact socket walls;</li> <li>• Facial bone of at least 1 mm in thickness;</li> <li>• No acute infection at the site;</li> <li>• The availability of at least 3 mm of bone apical and lingual to the socket to provide primary stability;</li> <li>• At least 35 Ncm insertion torque and/or ISQ of 70; and</li> <li>• Thick soft tissue phenotype</li> </ul>
	Comparison	Immediate implant placement and immediate loading of single implant restorations using modern dental implants with a micro-rough surface without one or more site-specific factors in the selection criteria
	Outcome	Evaluate the implants after a minimum follow-up of 12 months regarding: <ul style="list-style-type: none"> <li>• Proportion of procedures that are executed successfully on selected patients vs. those that are moved to an alternate implant placement/loading protocol;</li> <li>• Survival of implants/ implant-supported crowns; and</li> <li>• Criteria influencing the survival/success of implants placed immediately and loaded immediately</li> </ul>
Search Strategy	PubMed	(dental implantation, endosseous[MeSH] OR dental implants[MeSH] OR implantation OR implant OR implants) AND (dental prostheses, implant supported[MeSH] OR crown OR single crown OR single unit) AND (immediate implant OR immediate implantation OR immediate implant placement OR immediate placement OR immediate OR fresh extraction sockets OR immediate extraction sockets) AND (immediate dental implant loading[MeSH] OR immediate) AND (English[Language])
	Embase	("dental implantation, endosseous"/exp OR "dental implantation, endosseous" OR (("dental"/exp OR dental) AND ("implantation,"/exp OR implantation,) AND endosseous AND ("mesh"/exp OR mesh)) OR "dental implants"/exp OR "dental implants" OR (("dental"/exp OR dental) AND ("implants"/exp OR implants) AND ("mesh"/exp OR mesh)) OR "implantation"/exp OR implantation OR "implant"/exp OR implant OR "implants"/exp OR implants) AND ("dental prostheses, implant supported" OR ("dental"/exp OR dental) AND ("prostheses,"/exp OR prostheses,) AND ("implant"/exp OR implant) AND supported AND ("mesh"/exp OR mesh)) OR "crown"/exp OR crown OR "single crown" OR (single AND ("crown"/exp OR crown)) OR "single unit" OR (single AND ("unit"/exp OR unit))) AND ("immediate implant" OR (immediate AND ("implant"/exp OR implant)) OR "immediate implantation" OR (immediate AND ("implantation"/exp OR implantation)) OR "immediate implant placement" OR (immediate AND ("implant"/exp OR implant) AND placement) OR "immediate placement" OR (immediate AND placement) OR immediate OR "fresh extraction sockets" OR (fresh AND ("extraction"/exp OR extraction) AND sockets) OR "immediate extraction sockets" OR (immediate AND ("extraction"/exp OR extraction) AND sockets)) AND ("immediate dental implant loading"/exp OR "immediate dental implant loading" OR (immediate AND ("dental"/exp OR dental) AND ("implant"/exp OR implant) AND ("loading"/exp OR loading) AND ("mesh"/exp OR mesh)) OR immediate) AND ("English"/exp OR English) AND ("language"/exp OR language)
	Cochrane	(dental implantation, endosseous[MeSH] OR dental implants[MeSH] OR implantation OR implant OR implants) AND (dental prostheses, implant supported[MeSH] OR crown OR single crown OR single unit) AND (immediate implant OR immediate implantation OR immediate implant placement OR immediate placement OR immediate OR fresh extraction sockets OR immediate extraction sockets) AND (immediate dental implant loading[MeSH] OR immediate) AND (English[Language])
Database Search	MEDLINE (PubMed), Embase, and Cochrane	

Reference lists of the studies that had been included by the electronic search were screened and checked for cross-references. An attempt was made to identify gray literature by searching through the database of the U.S. National Library of Medicine ([www.clinicaltrials.gov](http://www.clinicaltrials.gov)). In addition, the following journals were hand searched up to January 2022: *Clinical Implant Dentistry and Related Research*, *Clinical Oral Implants Research*, *Clinical Oral Investigations*, *International Journal of Oral & Maxillofacial Implants*, *International Journal of Oral & Maxillofacial Surgery*, *Journal of Clinical Periodontology*, and the *Journal of Periodontology*.

The search results were exported and imported on Covidence (Melbourne, Australia), a systematic review management, to organize and evaluate the papers.

## 2.3 | Selection criteria

All types of study designs were included, provided they met the following criteria:

Inclusion criteria:

- Studies on humans;
- At least 10 participants;
- Studies that report immediate implant placement with immediate loading (Type 1A);
- Modern, rough surface implants;
- Single implants placed in the esthetic zone, from 15 to 25 (FDI);
- Implant survival rate and Number of implant failures reported; and
- Minimal follow-up evaluation of 12 months.

Exclusion criteria:

- Animal or in-vitro studies;
- Studies using zirconia implants;
- Review articles;
- Implants with machine surfaces or hydroxyapatite (HA) coatings;
- Implant supporting fixed or removable, partial or full-arch reconstructions with multiple implants;
- Insufficient information on defined outcome criteria;
- Studies that did not report on both the implant placement and implant loading protocols;
- Implant placement and loading protocols other than Type 1A immediate implant placement and immediate loading;
- Studies containing data on several implant placement and loading protocols where the data on Type 1A was not able to be clearly separated;
- Studies with less than 12-month follow-up period; and
- Multiple publications on the same patient population.

Furthermore, only the study with the most extended follow-up was included in multiple publications with the same study population.

However, previous studies were consulted only to retrieve information not provided in the most recent publication.

## 2.4 | Screening of studies and data collection

After duplicate records exclusion, two reviewers (L.H.G. and K.P.A.) independently screened the title and abstract to the outcomes. Then, the full texts were screened for meeting the inclusion criteria. Disagreements were resolved by discussion between reviewers and consultation with a third reviewer (A.H.) when required.

Data were extracted manually independently by the three reviewers (L.H.G., K.P.A., and A.H.) from the included studies and recorded on standardized forms. The following information was collected for further analysis:

- Author(s), year of publication, and study designs: randomized/nonrandomized controlled trial, retrospective study, case series, and experimental study;
- Number of implants and location;
- Follow-up in months;
- Survival rate, success rate, and patient dropout(s)/number of implant failures;
- Implant brand, implant dimensions, implant lengths, and implant design; and
- Inclusion and procedural criteria reported for Type 1A protocols.

Included studies were analyzed according to the risk assessment [Tables 2 and 3](#) for Type 1A immediate implant placement and immediate restoration/loading in single tooth sites (Lambert et al., 2023); the selection criteria of each study were assessed regarding low-, medium-, or high-risk inclusions.

Data on noncompliance to the planned Type 1A treatment protocol were identified in prospective studies to perform an intention-to-treat analysis, which for the purpose of this review described the number of sites that were selected and/or included for Type 1A treatment that were not able to be completed as planned. The reasons for deviation from the originally planned treatment protocol were also collated.

## 2.5 | Quality assessment

The quality assessment of all the included studies was analyzed by two reviewers (L.H.G. and K.P.A.). The risk of bias was assessed in randomized controlled trials (RCT) using the Cochrane quality assessment tool RoB2 (Higgins et al., 2022; Sterne et al., 2019). For nonrandomized studies, the Newcastle–Ottawa Assessment Scale ([http://www.ohri.ca/pro-grams/clinical\\_epidemiology/oxford.asp](http://www.ohri.ca/pro-grams/clinical_epidemiology/oxford.asp)) was applied to evaluate the selection of the study groups, the comparability of the groups, and the ascertainment of the outcome of interest converting the Newcastle–Ottawa scales to Agency for

TABLE 2 Risk assessment for immediate implant placement in single tooth sites (Lambert et al., 2023).

	Low risk	Medium risk	High risk
<b>Preoperative assessment</b>			
<b>Patient related</b>			
Medical Status	Healthy, Uneventful healing		Compromised healing
Esthetic risk	Low/Medium esthetic risk	High esthetic risk	Significant esthetic compromise expected
<b>Site related</b>			
Gingival margin position	Absence of recession	Minor Gingival recession	Gingival recession $\geq 2$ mm
Soft tissue quality	Thick gingival phenotype	Thin gingival phenotype or limited keratinized gingivae	Absence of keratinized gingivae
Bone anchorage	Sufficient bone anchorage to achieve primary stability		Lack of bone anchorage to achieve primary stability
Facial bone wall	$\geq 1$ mm facial bone thickness	Facial bone plate $< 1$ mm thickness, or small fenestration or dehiscence defect	Significant fenestration or dehiscence of facial bone
Mucoperiosteal Flap	Sufficient alveolar bone for a flapless approach		Need for a flapped bone augmentation procedure
Socket position within alveolar envelope	Socket within the alveolar bone envelope		Socket and facial bone wall protruding out of the bone envelope
Presence of endodontic infection	Absence of infection	Chronic peri-apical infection	Acute infection
Presence of periodontal disease	Periodontally healthy	Controlled periodontal disease	Active periodontal disease
Planning Implant position	Ideal three-dimensional position with axis exiting through the cingulum or incisal edge		Facially positioned or over-angulated implant or excessive implant depth
Gap between facial bone and planned implant position	$> 2$ mm	1–2 mm	$< 1$ mm
<b>Intra-operative assessment</b>			
Extraction	Minimally invasive tooth extraction	Damage to surrounding soft tissue including severed/detached papillae	Significant damage to soft tissue and surrounding bone
Primary Implant Stability	Primary stability achieved		Lack of primary stability
Final implant position	Ideal three-dimensional position achieved		Facially positioned or over-angulated implant or excessive implant depth

Healthcare Research and Quality (AHRQ) standards (good, fair, and poor).

## 2.6 | Statistical analysis

Cohen's kappa statistical analysis was performed to assess the level of agreement between the reviewers in the article screening process. Descriptive statistics such as mean and standard deviation (continuous data), percentages (count data), and data range were used to summarize demographics, number of implants, survival rates, success rates, study duration, failure time, and study dropouts.

### 2.6.1 | Main analysis

Survival rates were compared by inclusion criteria groups formed after the risk assessment. For interpretation of survival rates, one must always consider (average) study duration and study size, therefore the statistical assessment was done in two steps. First, mean survival rates and average study duration (both weighed by study sizes) were univariately compared between risk groups and additionally between studies published before and since 2012. As the distribution of the survival rates was skewed, non-normal, and with a lot of identical values (many having 100%), *p*-values for both survival rates and average study duration comparisons were calculated with the

TABLE 3 Risk assessment for immediate loading of an immediately placed single implant (Lambert et al., 2023).

	Low risk	Medium risk	High risk
<b>Preoperative assessment</b>			
<b>Patient related</b>			
Occlusal Scheme	No direct occlusal contacts	Minimal occlusal contact and/or shared guidance	Main determinant of anterior guidance
Occlusal Parafunction	Absent		Present
<b>Site related</b>			
Bone anchorage	Sufficient bone anchorage to resist loading forces		Insufficient bone anchorage to resist loading forces
Tooth Position	Incisor and premolars	Canine	Molars
<b>Intra-operative assessment</b>			
Primary Implant Stability	30–45Ncm insertion torque	20–30Ncm insertion torque	<20Ncm insertion torque

help of bias-corrected and study size-weighted Bootstrap tests (Efron & Tibshirani, 1994) and presented with bias-corrected and study size-weighted bootstrap confidence intervals. In a second step, survival rates within the first 6 months, labeled as “early survival rates,” were assessed using the very same techniques as from the first step and then compared to the previously obtained results. Roughly 90% of all implant losses occurred within the first 6 months so the results regarding early and overall survival rates should be comparable. Note that due to a non-negligible degree of missing observations, inclusion criteria could only be assessed in a univariate context.

## 2.6.2 | Secondary analysis

Survival rates were transformed in order to obtain comparable measures over time (i.e., study duration) and a meta-analysis was then performed to obtain an overall effect for the study pool. For the transformation of survival rates, an approach from epidemiology was used: For each study, incidence and survival rates,  $I_Y$  and  $S_Y$ , per observed implant-year were calculated as follows:

$$\text{Incidence rate per observed implant year} = I_Y = \frac{\text{Number of observed losses}}{\text{Total observed years in situ, all Impl.}}$$

$$\text{Survival rate per observed implant year} = S_Y = 1 - I_Y$$

For example, study A observing 10 implants with an average study time of 10 years, reported 1 loss after 9 years, that is, with reported survival of 90%, has an  $I_Y$  of  $1/99 \approx 1\%$  (1 loss and 9 implants were observed 10 years in situ, and 1 was observed 9 years in situ), and thus an  $S_Y$  of  $\approx 99\%$ . Note that this approach is more accurate than simply reweighing raw survival rates by the product of implant  $\times$  average study duration as the latter approach would put on par study A to a study B that observed 100 implants 1 year long with 10 losses (which would be clinically unacceptable). Observed implant-years had to be estimated by considering study dropouts and late implant losses (6+ months). If the timepoint of a loss or a dropout was unknown, it was assumed to have happened in the middle of the study duration.

Following the hands-on guide for meta-analysis (Harrer et al., 2021) and the suggestions from Spittal et al. (2015) to account for excessive zeros, a Poisson random-effects meta-analysis was used to systematically assess the transformed  $I_Y$  (and thus,  $S_Y$ ) from all 68 studies. Notice that in order to obtain a better model fit, incidence rates were first logarithmized (using a continuity correction) and the resulting means and confidence intervals were re-transformed to the original scale. The Knapp–Hartung correction (Knapp & Hartung, 2003) was further applied to correct potential biases from small-sample studies. Mean  $S_Y$  as obtained from meta-analysis is then graphically presented along with its 95% confidence interval. In addition, a 95% prediction interval for the survival rate per observed implant-year of a single study is drawn. Between-study heterogeneity is then assessed using Higgins & Thompsons'  $I^2$  statistic (Higgins & Thompson, 2002). An  $I^2$  of 50%, for example, means that 50% of the total variance is caused by study heterogeneity. If all studies were comparable (and thus exchangeable), one would expect an  $I^2$  of 0%.

An exact binomial test was used to assess the proportion of early and late failures.

All analyses in this report were performed with the statistics software R, version 4.0.2 (R Development Core Team, 2020). Throughout,  $p$ -values less than .05 were considered statistically significant. No correction for multiple comparisons was applied.

## 3 | RESULTS

### 3.1 | Study collection and study descriptives

A total number of 3118 publications were identified by the search. Following the title screening, 606 abstracts and 241 full-text articles were evaluated for inclusion (Figure 1). A Kappa score of 0.63 was obtained for eligibility assessment of full-text articles, which indicates a substantial interrater agreement. A total of 173 articles were excluded from the full-text screening for not meeting the inclusion criteria, with the reasons for exclusion listed in Table 4. A total of 68 articles were included for data extraction

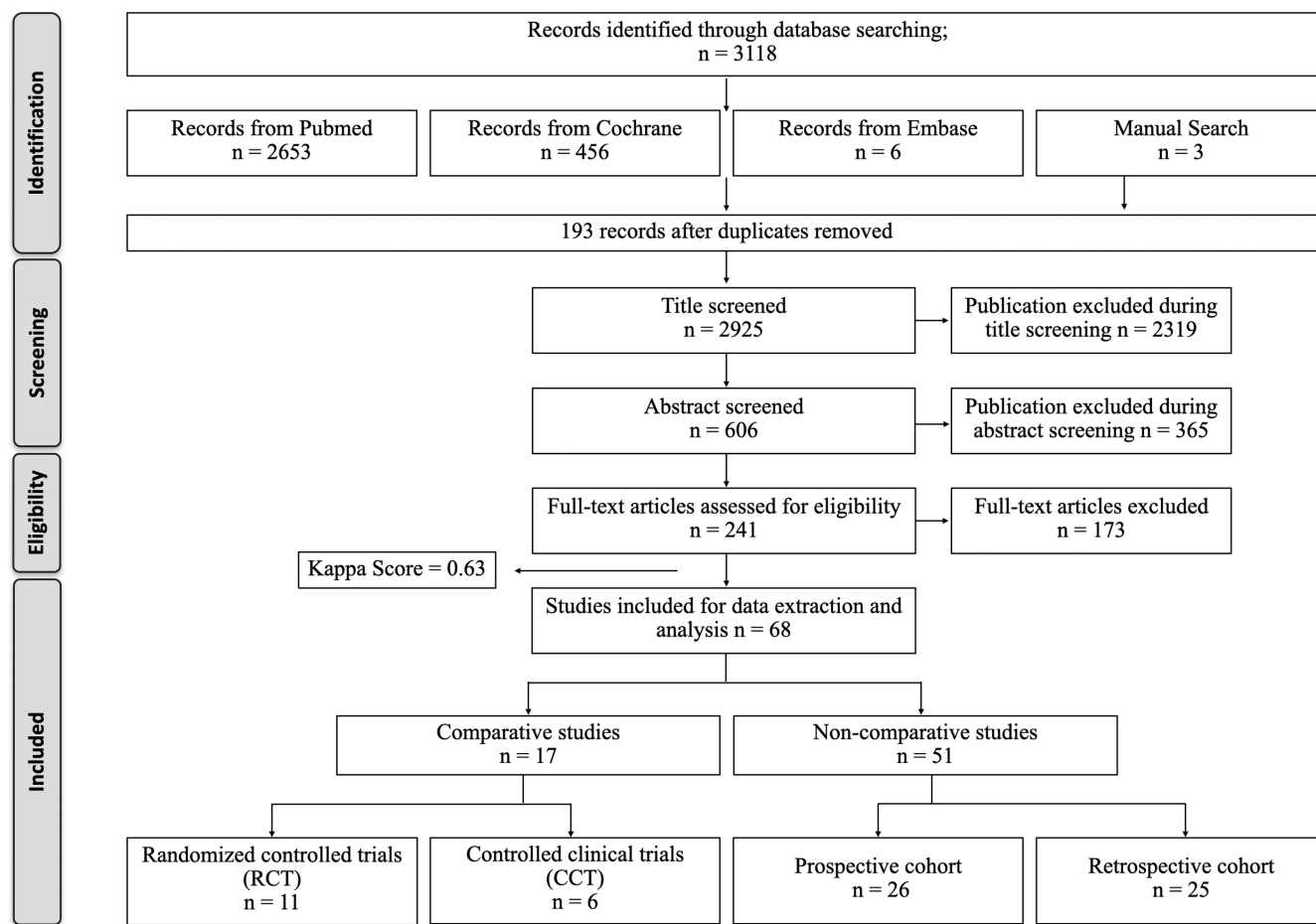


FIGURE 1 Search results and screening.

which comprised 11 randomized control trials (RCTs), six controlled clinical trials (CCTs), 26 prospective cohort studies, and 25 retrospective cohort studies.

The main characteristics of the included studies are reported in Table 5. Mean number of implants per study were 37.2 (SD: 22.9) and mean follow-up time was 2.8 years (SD: 2.3). Fifty-three implant failures were reported leading to survival rates ranging from 86.7% to 100% and 23 of the included 68 studies reported success rates ranging from 88.0% to 100%. Regarding the time of implant loss, the failure time is reported in 67 of 68 papers: From a total of 49 reported losses with known failure time, 43 (87.8%) are early losses compared to 6 losses later than 6 months (12.2%) (significantly more early failures,  $p < .0001$ ). One paper reported four losses without further information regarding failure time. Dropout rates were reported in 25 papers ranging from 0% to 41.8%.

### 3.2 | Main analysis: Comparison of survival rates

The estimated weighed mean overall survival rate for implants placed with a Type 1A protocol is 97.7% (95% CI: 96.9%–98.4%) and

weighed mean early survival rate is slightly higher with 98.3% (95% CI: 97.6%–98.8%), see Table 6.

Table 6 also presents the results of the univariate comparisons of inclusion criteria groups regarding survival rates, average study durations, and early survival rates.

Gap dimension showed a statistically significant impact on survival rates as weighed group means significantly differed: 95.9% of implants survived for gaps smaller than 2 mm versus 99.0% for gaps more than 2 mm ( $p = .04$ ). Weighed early survival rates also statistically significantly differed (96.5% vs. 99.2%,  $p = .04$ ) and weighed average study duration was comparable (2.5 years vs. 2.6 years,  $p = .85$ ). The second significant impact was found for publication year: Before 2012 weighed mean survival rate was 96.3%, and since 2012, it raised to 98.2% ( $p = .02$ ), even though publications from 2012 or later reported significantly larger study durations (2.9 years vs. 2.0 years before 2012,  $p = .005$ ). Similar results were found regarding early mean survival rates (97.2% pre-2012 vs. 98.6% 2012 and later,  $p = .04$ ). This might be an indicator that surgeons are getting more experienced with immediate implant placement over time, together with advances in implant technology, materials, surfaces, and surgical techniques. Studies including smokers had unexpectedly higher weighed mean survival rates than those excluding

TABLE 4 Full-text articles excluded.

Exclusion reason	Number of articles	References
Wrong study design	2	Brignardello-Petersen (2017)—review Locante (2001)—technique
Less than 1-year follow-up	11	Bavetta et al. (2019), Bell and Bell (2014), Calvo Guirado et al. (2007), Chu et al. (2020), Felice et al. (2011), Hui et al. (2001), Kotb et al. (2020), Rungcharassaeng et al. (2012), Saito et al. (2016), van Kesteren et al. (2010), Yoo et al. (2006)
Less than 10 sites	8	Carini et al. (2014), Crespi et al. (2007), Crespi et al. (2019), Juodzbalys and Wang (2010), Lorenzoni et al. (2003), Palattella et al. (2008), Peron and Romanos (2020), Shibly, Kutkut, and Albandar (2012)
Not single crowns	6	Anitua et al. (2016), Crespi et al. (2010b), Crespi et al. (2012), Degidi and Plattelli (2005), Miyamoto and Obama (2011), Nikellis et al. (2004)
Not separated Type 1a	14	Berberi (2021), Berberi, Tehini, et al. (2014), Boardman et al. (2016), Cannizzaro et al. (2016), Crespi et al. (2009), Esposito et al. (2015), Guarnieri et al. (2020), Locante (2004), Millilo et al. (2016), Norton (2004), Petrungero (2017), Pozzi et al. (2015), Raes, Cosyn, et al. (2018), Testori et al. (2007)
Not separated sites(anterior/posterior/maxilla/mandible)	59	Aguirre-Zorzano et al. (2011), Amato et al. (2020), Amato et al. (2018), Avanzo et al. (2009), Barone et al. (2016), Barone et al. (2015), Becker et al. (2011), Block et al. (2004), Blus and Szukler-Moncler (2010), Chaushu et al. (2001), Clauser et al. (2020), Cornelini et al. (2008), Cornelini et al. (2005), Covani et al. (2004), Crespi et al. (2010a), de Carvalho et al. (2013), Degidi et al. (2008), Drago and Lazzara (2004), El-Chaar (2011), Ferrantino et al. (2021), Galli et al. (2008), Givens Jr. et al. (2015), Glauser et al. (2004), Grandi, Guazzi, et al. (2012), Grandi et al. (2014), Grandi et al. (2015), Grunder et al. (1999), Horwitz et al. (2008), Hosseini et al. (2015), Hruska et al. (2002), Kniha et al. (2017), Kolinski et al. (2014), Kopp et al. (2013), Laviv et al. (2010), Levin (2011), Levin and Wilk (2013), Luongo et al. (2014), Malchiodi et al. (2010), Malchiodi et al. (2011), Maló et al. (2015), Meltzer (2012), Mura (2012), Noelken, Moergel, Kunkel, et al. (2018), Noelken et al. (2007), Noelken et al. (2014), Peñarocha-Diago et al. (2012), Peron and Romanos (2016), Pozzi et al. (2021), Schwartz-Arad et al. (2007), Shibly, Kutkut, Patel, and Albandar (2012), Shibly et al. (2010), Siebers et al. (2010), Siormpas et al. (2014), Soardi et al. (2012), Vanden Bogaerde et al. (2005), Velasco-Ortega et al. (2018), Zafiroopoulos et al. (2010), Zembic et al. (2012)
Immediate placement but not immediate loading	22	Aroa and Ivanovski (2018b), Asfiroosta et al. (2021), Benic et al. (2012), Bianchi and Sanfilippo (2004), Bilhan et al. (2011), Cecchinato et al. (2015), Covani et al. (2012), Evans and Chen (2008), Felice et al. (2015), Fugazzotto (2012), Garcia-Sanchez et al. (2021), Guarnieri et al. (2015), Heinemann et al. (2013), Hof et al. (2015), Jung et al. (2013), Koh et al. (2011), Lee et al. (2012), Malchiodi et al. (2016), Polizzi et al. (2000), Shi et al. (2020), Tadi et al. (2014), Wagenberg et al. (2013)
Immediate loading but not immediate placement	27	Anitua et al. (2008), Boedeker et al. (2011), Donos et al. (2019), Ericsson et al. (2000), Gilbert et al. (2016), Hall et al. (2006), Kim et al. (2015), Lang et al. (2014), Lindeboom et al. (2006), Maló et al. (2003), Meizi et al. (2014), Mertens and Steveling (2011), Nissan et al. (2008), Ostman et al. (2010), Parel and Schow (2005), Proussaefs et al. (2002), Proussaefs and Lozada (2004), Rai et al. (2020), Rizkallah et al. (2013), Ryser et al. (2005), Sarnowski and Paul (2012), Simmons et al. (2016), Stacchi et al. (2018), Stanley et al. (2017), Vandeweghe et al. (2012), Vandeweghe et al. (2013), Vervaeke et al. (2013)
Survival rate not reported	4	Fürhauser et al. (2017), Groenendijk et al. (2021), Mangano et al. (2016), Roe et al. (2012)
Longer follow-up reported in a subsequently included publication	12	Brown and Payne (2011), Chan et al. (2019), Cooper et al. (2010), Cosyn et al. (2013), De Bruyn et al. (2013), De Rouck et al. (2008), De Rouck et al. (2009), Kan et al. (2003), Mijiritsky et al. (2009), Raes et al. (2011), Raes et al. (2012), Slagter et al. (2017)
Multiple publications with the same patient data	7	Canullo, Iurlaro, and Iannello (2009), Chu et al. (2018), Chu et al. (2015), Hartlev et al. (2014), Kolerman, Nissan, Mijiritsky, et al. (2016), van Nimwegen et al. (2018), Wang et al. (2020)
Socket shield technique	1	Hinze et al. (2018)
Included	68	Aguilar-Salvatierra et al. (2016), Arora and Ivanovski (2018a), Berberi, Noujeim, et al. (2014), Berberi, Sabbagh, et al. (2014), Bittner et al. (2020), Block et al. (2009), Bonnet et al. (2018), Bruno et al. (2014), Bushahri et al. (2021), Cabello et al. (2013), Calvo-Guirado et al. (2015), Calvo-Guirado et al. (2009), Camullo et al. (2010), Canullo, Goglia, et al. (2009), Canullo and Rasperini (2007), Cardaropoli et al. (2019), Cardaropoli et al. (2015), Cooper et al. (2014), Cosyn et al. (2011), Cosyn et al. (2016), Crespi et al. (2008), Cristalli et al. (2015), Degidi et al. (2013), Degidi et al. (2014), Di Alberty et al. (2012), Ferrara et al. (2006), Ganeles et al. (2017), Grandi, Garuti, Samarani, et al. (2012), Grandi et al. (2013), Groenendijk et al. (2020), Groenendijk et al. (2017), Groisman et al. (2003), Hartlev et al. (2013), Kan et al. (2011), Kinzani et al. (2014), Kolerman, Nissan, Rahmanov, et al. (2016), Lombardo et al. (2016), Ma et al. (2019), Malchiodi et al. (2013), Mangano et al. (2012), Mangano et al. (2013), McAllister et al. (2012), Menchini-Fabris et al. (2019), Migliorati et al. (2015), Mijiritsky et al. (2015), Noelken et al. (2011), Noelken, Moergel, Pausch, et al. (2018), Norton (2011), Paul and Held (2013), Pieri et al. (2011), Raes, Eghbali, et al. (2018), Raes et al. (2017), Ribeiro et al. (2008), Rosa et al. (2014), Ross et al. (2014), Saeedi Germi et al. (2020), Sato et al. (2017), Seyssens et al. (2020), Shanelc (2005), Slagter et al. (2021), Spinato et al. (2012), Tarnow et al. (2014), Tortamano et al. (2010), Valentini et al. (2010), Van Nimwegen et al. (2016), Vidigal Jr. et al. (2017), Yang et al. (2019), Zúderfeldt et al. (2018)



smokers, however, this was not statistically significant (98.8% vs. 97.4%,  $p = .06$ ). Studies with nonsmokers are of significantly larger weighed duration which is a possible confounding variable (3.2 years vs. 2.0 years,  $p < .001$ ). The presence of chronic endodontic infection did not appear to negatively affect implant survival in Type 1A protocols with higher survival rates reported compared to those studies which excluded all endodontic infections (98.8% vs. 96.2%,  $p = .004$ ). Weighed study duration in the analysis of endodontic infection was comparable (2.3 vs. 2.2 years,  $p = .88$ ).

### 3.3 | Meta-analysis

A Poisson random-effects meta-analysis was used to systematically assess the survival rates per observed implant-year  $S_Y$  from all 68 studies. An image of the result is shown in [Figure 2](#) and a summary is shown in the first line of [Table 7](#) (main model).

Forty-two studies reported an  $S_Y$  of 100% without losses compared to 26 studies with at least one loss. The lowest  $S_Y$  was reported in the study of Grandi et al., 2013 (91.3%).

The estimated mean survival rate per observed implant-year is 99.4% with a 95% CI of 99.0% to 99.7%. The estimated 95% prediction interval of a single study ranges from 95.3% to 100%. Finally, the measure of heterogeneity  $I^2$  is 53% and significantly higher than zero ( $p = .002$ ), indicating a “moderate level of heterogeneity” (Higgins & Thompson, 2002).

Further sensitivity analysis showed that estimation of mean survival rate per observed implant-year is quite robust to outliers. A recalculation removing influential studies of Groisman et al., 2003, Block et al., 2009, Grandi et al., 2013, and Cristalli et al., 2015 yielded a slightly higher mean  $S_Y$  of 99.5%, a narrower prediction interval of 97.5% to 100%, and a reduced measure of heterogeneity  $I^2$  of 34% (line 2 in [Table 7](#)).

### 3.4 | Quality assessment

[Figure 3](#) summarizes the risk for bias for the included RCTs. Most of the studies have some concern or high risk with regard to the randomization process, which is largely due to the time of the randomization and the concealment of allocation. Due to the nature of treatment, it is not possible to blind the patients or the clinicians delivering care. Another important aspect was the team involved in collecting and analyzing the final data, and most of the included articles had blinded outcome assessors. The outcome data are well reported in all included studies, demonstrating a low risk of bias.

The risk of bias for nonrandomized studies is presented in [Table 8](#). Twenty of the 57 evaluated studies were qualified with good quality, and 35 articles were identified as fair. Additionally, two articles were qualified with poor quality. Most of the studies have some concerns regarding the selection of the patients with the outcome of interest not defined at the start of the study.

### 3.5 | Outcome analysis based on study inclusion criteria

Selection criteria that were found to be reported in each study and the corresponding risk assessments are summarized in [Table 9](#) and included:

- Medical status;
- Gingival margin position;
- Soft tissue quality;
- Bone anchorage;
- Facial bone wall;
- Mucoperiosteal flap;
- Presence of endodontic infection;
- Presence of periodontal disease;
- Gap between the facial bone and implant;
- Damage during tooth extraction;
- Primary implant stability;
- Occlusal scheme; and
- Signs of parafunction.

#### 3.5.1 | Medical status

The medical status of the patient as an inclusion or exclusion criterion for Type 1A protocols was reported in 63 of the included articles. Forty-one studies (Berberi, Noujeim, et al., 2014; Berberi, Sabbagh, et al., 2014; Bittner et al., 2020; Block et al., 2009; Bonnet et al., 2018; Bushahri et al., 2021; Canullo et al., 2010; Canullo, Goglia, et al., 2009; Cardaropoli et al., 2019; Cooper et al., 2014; Cosyn et al., 2011, 2016; Crespi et al., 2008; Ferrara et al., 2006; Grandi, Garuti, Samarani, et al., 2012; Groenendijk et al., 2017; Kan et al., 2011; Khzam et al., 2014; Lombardo et al., 2016; Ma et al., 2019; Mangano et al., 2013; McAllister et al., 2012; Menchini-Fabris et al., 2019; Migliorati et al., 2015; Mijiritsky et al., 2021; Noelken et al., 2011; Raes et al., 2017; Raes, Eghbali, et al., 2018; Ribeiro et al., 2008; Rosa et al., 2014; Saedi Germi et al., 2020; Sato et al., 2017; Seyssens et al., 2020; Spinato et al., 2012; Tarnow et al., 2014; Tortamano et al., 2010; Valentini et al., 2010; Van Nimwegen et al., 2016; Vidigal Jr. et al., 2017; Yang et al., 2019; Zuiderveld et al., 2018) included only healthy patients with no medical conditions and excluded patients with any smoking degree. All studies excluded heavy smokers (>10–15 cigarettes/day). Twenty studies (Arora & Ivanovski, 2018a, 2018b; Bruno et al., 2014; Cabello et al., 2013; Calvo-Guirado et al., 2009, 2015; Canullo & Rasperini, 2007; Cardaropoli et al., 2015; Cristalli et al., 2015; Degidi et al., 2013; Ganeles et al., 2017; Groenendijk et al., 2021; Hartlev et al., 2013; Kolerman, Nissan, Rahmanov, et al., 2016; Malchiodi et al., 2013; Mangano et al., 2012; Noelken, Moergel, Pausch, et al., 2018; Norton, 2011; Paul & Held, 2013; Pieri et al., 2011) allowed for patients categorized as light smokers

(<10–15 cigarettes/day) to be included. Three studies included patients with controlled diabetes (HbA1c < 7; Aguilar-Salvatierra et al., 2016; Grandi et al., 2013; Norton, 2011), with one of these studies (Aguilar-Salvatierra et al., 2016) also having patients with an HbA1c of up to 10 demonstrating lower implant survival and higher marginal bone loss in patients with poorly controlled diabetes.

### 3.5.2 | Gingival margin position

Gingival recession was reported as an exclusion criterion for Type 1A implant treatment protocol in 22 studies (Bittner et al., 2020; Block et al., 2009; Bruno et al., 2014; Cabello et al., 2013; Canullo et al., 2010; Cardaropoli et al., 2015, 2019; Cosyn et al., 2011, 2016; Cristalli et al., 2015; Di Alberti et al., 2012; Groisman et al., 2003; Kan et al., 2011; Khzam et al., 2014; Mangano et al., 2013; Migliorati et al., 2015; Raes, Eghbali, et al., 2018; Ross et al., 2014; Saedi Germi et al., 2020; Seyssens et al., 2020; Tarnow et al., 2014; Vidigal Jr. et al., 2017). Only two studies (Noelken, Moergel, Pausch, et al., 2018; Shanelec, 2005) reported that preoperative labial tissue deficiencies were present, and for which sub-epithelial connective tissue grafting was performed in some of them.

### 3.5.3 | Soft tissue quality

Soft tissue phenotype was considered as part of the inclusion criteria or study outcomes analysis in 25 studies (Bittner et al., 2020; Bushahri et al., 2021; Cabello et al., 2013; Calvo-Guirado et al., 2009, 2015; Canullo et al., 2010; Canullo, Goglia, et al., 2009; Canullo & Rasperini, 2007; Cosyn et al., 2011, 2016; Groenendijk et al., 2021; Kan et al., 2011; Malchiodi et al., 2013; Mangano et al., 2012, 2013; Migliorati et al., 2015; Raes, Eghbali, et al., 2018; Rosa et al., 2014; Ross et al., 2014; Saedi Germi et al., 2020; Shanelec, 2005; Spinato et al., 2012; Vidigal Jr. et al., 2017; Zuiderveld et al., 2018), of which eight studies excluded (Cosyn et al., 2011, 2016; Malchiodi et al., 2013; Mangano et al., 2012, 2013; Raes, Eghbali, et al., 2018; Saedi Germi et al., 2020; Spinato et al., 2012) sites with thin gingival phenotype. A minimum height of keratinized tissues ranging from 2 to 3 mm was required in four studies (Block et al., 2009; Calvo-Guirado et al., 2009, 2015; Cristalli et al., 2015). Sites with a thin soft tissue phenotype were included in 17 studies (Bittner et al., 2020; Bushahri et al., 2021; Cabello et al., 2013; Calvo-Guirado et al., 2009, 2015; Canullo et al., 2010; Canullo, Goglia, et al., 2009; Canullo & Rasperini, 2007; Groenendijk et al., 2021; Kan et al., 2011; Migliorati et al., 2015; Noelken, Moergel, Pausch, et al., 2018; Rosa et al., 2014; Ross et al., 2014; Shanelec, 2005; Vidigal Jr. et al., 2017; Zuiderveld et al., 2018). Connective tissue grafting in conjunction with Type 1A implant treatment protocols for phenotype modification and compensation for anticipated alveolar ridge dimensional changes associated with tooth extraction was reported in seven studies (Bonnet et al., 2018; Kolerman, Nissan, Rahmanov, et al., 2016; Migliorati

et al., 2015; Noelken, Moergel, Pausch, et al., 2018; Shanelec, 2005; Vidigal Jr. et al., 2017; Zuiderveld et al., 2018).

### 3.5.4 | Bone anchorage

Sufficient bone anchorage for primary stability as a preoperative assessment and inclusion criteria with Type 1A protocols was reported in 37 studies. Nineteen of these studies specified a minimum distance of bone apical to the socket to allow for engagement with the implant beyond the apex of the tooth ranging from 3 to 5 mm (Aguilar-Salvatierra et al., 2016; Berberi, Noujeim, et al., 2014; Berberi, Sabbagh, et al., 2014; Bushahri et al., 2021; Calvo-Guirado et al., 2015; Canullo et al., 2010; Canullo, Goglia, et al., 2009; Cosyn et al., 2011, 2016; Crespi et al., 2008; Cristalli et al., 2015; Groenendijk et al., 2017, 2021; Kolerman, Nissan, Rahmanov, et al., 2016; Ma et al., 2019; Menchini-Fabris et al., 2019; Pieri et al., 2011; Ribeiro et al., 2008; Seyssens et al., 2020). A requirement for sufficient bone to be present but did not provide any indication of the preoperative assessment criteria to determine suitability was reported in 18 studies (Arora & Ivanovski, 2018a, 2018b; Block et al., 2009; Bruno et al., 2014; Cardaropoli et al., 2019; Degidi et al., 2014; Ferrara et al., 2006; Migliorati et al., 2015; Noelken, Moergel, Pausch, et al., 2018; Raes, Eghbali, et al., 2018; Rosa et al., 2014; Saedi Germi et al., 2020; Sato et al., 2017; Spinato et al., 2012; Tarnow et al., 2014; Tortamano et al., 2010; Valentini et al., 2010; Vidigal Jr. et al., 2017; Yang et al., 2019).

### 3.5.5 | Facial bone wall

The presence of an intact facial bone wall following tooth extraction was required in 42 studies (Arora & Ivanovski, 2018a, 2018b; Berberi, Noujeim, et al., 2014; Berberi, Sabbagh, et al., 2014; Bittner et al., 2020; Block et al., 2009; Cabello et al., 2013; Canullo et al., 2010; Canullo, Goglia, et al., 2009; Canullo & Rasperini, 2007; Cardaropoli et al., 2015, 2019; Cosyn et al., 2011, 2016; Crespi et al., 2008; Cristalli et al., 2015; Degidi et al., 2013; Ferrara et al., 2006; Grandi et al., 2013; Grandi, Garuti, Samarani, et al., 2012; Groenendijk et al., 2017; Kan et al., 2011, 2003; Khzam et al., 2014; Lombardo et al., 2016; Mangano et al., 2012, 2013; Menchini-Fabris et al., 2019; Paul & Held, 2013; Pieri et al., 2011; Raes, Eghbali, et al., 2018; Ribeiro et al., 2008; Ross et al., 2014; Saedi Germi et al., 2020; Sato et al., 2017; Seyssens et al., 2020; Shanelec, 2005; Spinato et al., 2012; Tarnow et al., 2014; Tortamano et al., 2010; Van Nimwegen et al., 2016; Vidigal Jr. et al., 2017; Yang et al., 2019). Seven studies allowed for small facial dehiscence or fenestration defects of up to 3 mm (Bonnet et al., 2018; Bruno et al., 2014; Bushahri et al., 2021; Hartlev et al., 2013; Ma et al., 2019; McAllister et al., 2012; Migliorati et al., 2015). Larger defects or complete lack of facial bone was reported in 11 studies (Calvo-Guirado et al., 2009; Cooper et al., 2014; Groenendijk et al., 2021; Kolerman, Nissan, Rahmanov, et al., 2016; Noelken et al., 2011; Noelken,

TABLE 5 Included study characteristics.

Study	Type of study	Comparison	Number of implant sites	Lost to follow-up	Excluded due to procedural complications	Intention to treat	Number of implants included
Bittner et al. (2020)	Randomized control trial	Bone Graft vs. No Graft	22	0	0	100	22
Block et al. (2009)	Randomized control trial	Type 1a vs. 4a	38	7	1	97	30
Bushahri et al. (2021)	Randomized control trial	Type 1a vs. 1c	20	2	0	100	18
(Canullo, Goglia, et al., 2009)	Randomized control trial	Platform match vs. platform shift	22	0	0	100	22
Canullo et al. (2010)	Randomized control trial	Disconnection vs. one abutment one time	32	0	7	78	25
Crespi et al. (2008)	Randomized control trial	Type 1a vs. 1c	20	0	0	100	20
Degidi et al. (2014)	Randomized control trial	Disconnection vs. one abutment one time	91	25	13	86	53
Migliorati et al. (2015)	Randomized control trial	SCTG vs. No SCTG	48	1	0	100	47
Pieri et al. (2011)	Randomized control trial	Platform match vs. platform shift	40	1	1	98	38
Slagter et al. (2021)	Randomized Control Trial	Type 1a vs. 1c	20	2	0	100	18
Zuiderveld et al. (2018)	Randomized Control Trial	SCTG vs. No SCTG	60	0	0	100	60
Berberi, Sabbagh, et al. (2014)	Controlled clinical trial	Type 1a vs. 4a	22	NR	NR	-	22
Cooper et al. (2014)	Controlled clinical trial	Type 1a vs. 4a	63	7	8	87	48
Di Alberti et al. (2012)	Controlled clinical trial	Type 1a vs. 4a	25	0	NR	-	25
Grandi et al. (2013)	Controlled clinical trial	Type 1a vs. 4a	25	0	0	100	25
Raes et al. (2017)	Controlled clinical trial	Type 1a vs. 4a	48	NR	NR	-	48
Raes, Eghbali, et al. (2018)	Controlled clinical trial	Type 1a vs. 4a	16	4	NR	-	12
Aguilar-Salvatierra et al. (2016)	Prospective cohort	Healthy vs. Diabetic	85	0	NR	-	85
Berberi, Noujeim, et al. (2014)	Prospective cohort	No comparison	20	NR	NR	-	20
Cabello et al. (2013)	Prospective cohort	No comparison	14	NR	NR	-	14
Calvo-Guirado et al. (2009)	Prospective cohort	No comparison	61	1	NR	-	60
Calvo-Guirado et al. (2015)	Prospective cohort	No comparison	71	NR	NR	-	71
Canullo and Rasperini (2007)	Prospective cohort	No comparison	10	0	NR	-	10
Cardaropoli et al. (2015)	Prospective cohort	No comparison	26	0	0	100	26
Cardaropoli et al. (2019)	Prospective cohort	No comparison	20	0	0	100	20
Cosyn et al. (2011)	Prospective cohort	No comparison	32	4	2	94	26
Cosyn et al. (2016)	Prospective cohort	No comparison	22	4	0	100	18
Cristalli et al. (2015)	Prospective cohort	No comparison	29	0	4	86	25
Ferrara et al. (2006)	Prospective cohort	No comparison	39	0	6	85	33
Ganeles et al. (2017)	Prospective cohort	No comparison	15	4	NR	-	11

Mean follow-up (months)	Total number of failures	Early failures <6 m	Late failures 6 m+	Survival rate (%)	Success rate (%)	Success criteria reported	Implant details	Implant diameters	Implant lengths	Implant design
12	0	0	0	100	NR	N	BioMet 3i Certain	3.25–5 mm	8.5–15 mm	BL, T
24	4	NR	NR	86.7	NR	N	BioMet 3i Certain	3.25–4 mm	11.5–13 mm	BL, T
30	2	2	0	88.9	NR	N	Neobiotech IS II active	3.5–4.5 mm	11.5–13 mm	BL, T
25	0	0	0	100	NR	N	Sweden & Martina Global	5.5 mm		BL, T
36	0	0	0	100	100	N	Sweden & Martina Global	5.5 mm	13 mm	BL, T
24	0	0	0	100	NR	Y	Sweden & Martina Outlink	3.75–5 mm	13 mm	BL, T
24	0	0	0	100	NR	N	Dentsply Ankylos	3.5–4.5 mm	14–17 mm	BL, T
24	0	0	0	100	NR	N	Straumann Tapered Effect	NR	NR	TL, T
12	1	1	0	97.4	97.35	Y	Samo Biomedica Smiler Cone	NR	NR	BL, T
60	0	0	0	100	NR	N	Nobel Active	NR	NR	BL, T
12	2	2	0	96.7	96.7	Y	Nobel Active	3.5–4.3 mm	15–18 mm	BL, T
60	2	2	0	90.9	NR	N	Dentsply Astra Tech TX	3.5–5 mm	11–15 mm	BL, P
60	3	3	0	93.8	NR	N	Dentsply Astra Tech TX	3.5–5 mm	11–17 mm	BL, P
12	0	0	0	100	100	Y	MIS Seven	3.3–4.2 mm	11.5–16 mm	BL, T
12	2	2	0	92	NR	N	JDentalCare, JDEvolution	3.7–5 mm	11.5–15 mm	BL, T
60	1	1	0	97.9	NR	N	Dentsply Astra Tech TX	3.5–5 mm	11–19 mm	BL, P
96	1	1	0	91	NR	N	Dentsply Astra Tech TX	3.5–5 mm	13–17 mm	BL, P
24	4	0	4	95.3	NR	N	Straumann Bone Level	3.3–4.1 mm	10–14 mm	BL, P
36	0	0	0	100	NR	N	Dentsply Astra Tech TX	NR	NR	BL, P
12	0	0	0	100	NR	N	Straumann, Bone Level/ Tissue Level	NR	NR	BL or TL, P
12	1	1	0	96.7	NR	N	Biomet 3i Certain	4–5 mm	13–15 mm	BL, P
36	0	0	0	100	NR	N	MIS Seven	4.2–5 mm	11.5–13 mm	BL, T
21.9	0	0	0	100	NR	N	Def Con TSATM	4 mm	13 mm	TL, T
12	0	0	0	100	NR	N	BioMet 3i T3	4–5 mm	11.5–15 mm	BL, T
12	0	0	0	100	NR	N	Straumann Bone Level Tapered	3.3–4.8 mm	10–14 mm	BL, T
36	1	1	0	96	NR	N	Nobel Replace	NR	NR	BL, T
60	1	1	0	94.4	NR	N	Nobel Active	NR	NR	BL, T
12	2	2	0	91.6	91.6	Y	Nobel Active	3.5–5 mm	11.5–18 mm	BL, T
28.1	2	2	0	94	NR	N	Friadent Frialit	3.8–5.5 mm	13–15 mm	BL, T
24	0	0	0	100	100	Y	Nobel Active	3.5–5 mm	10–15 mm	BL, T

(Continues)

TABLE 5 (Continued)

Study	Type of study	Comparison	Number of implant sites	Lost to follow-up	Excluded due to procedural complications	Intention to treat	Number of implants included
Grandi, Garuti, Samarani, et al. (2012)	Prospective cohort	No comparison	36	NR	NR	-	36
Groenendijk et al. (2021)	Prospective cohort	No comparison	100	2	NR	-	98
Groisman et al. (2003)	Prospective cohort	No comparison	92	NR	NR	-	92
Kan et al. (2011)	Prospective cohort	Thick vs. Thin Biotype	35	NR	NR	-	35
Ma et al. (2019)	Prospective cohort	No comparison	28	9	2	93	17
Malchiodi et al. (2013)	Prospective cohort	No comparison	64	0	NR	-	64
McAllister et al. (2012)	Prospective cohort	No comparison	61	13	2	97	46
Noelken et al. (2011)	Prospective cohort	No comparison	18	0	0	100	18
Rosa et al. (2014)	Prospective cohort	No comparison	24	6	NR	-	18
Sato et al. (2017)	Prospective cohort	No comparison	16	0	NR	-	16
Seyssens et al. (2020)	Prospective cohort	No comparison	22	3	NR	-	19
Tortamano et al. (2010)	Prospective cohort	No comparison	12	0	0	100	12
Yang et al. (2019)	Prospective cohort	Thin vs. Thick Facial Bone	50	0	NR	-	50
Arora and Ivanovski (2018a)	Retrospective cohort	Type 1a vs. 1c	20	-	-	-	20
Bonnet et al. (2018)	Retrospective cohort	No comparison	39	-	-	-	39
Bruno et al. (2014)	Retrospective cohort	No comparison	17	-	-	-	17
Degidi et al. (2013)	Retrospective cohort	No comparison	10	-	-	-	10
Groenendijk et al. (2017)	Retrospective cohort	No comparison	16	-	-	-	16
Hartlev et al. (2013)	Retrospective cohort	No comparison	55	-	-	-	55
Khzam et al. (2014)	Retrospective cohort	No comparison	15	-	-	-	15
Kolerman, Nissan, Rahmanov, et al. (2016)	Retrospective cohort	No comparison	34	-	-	-	34
Lombardo et al. (2016)	Retrospective cohort	No comparison	21	-	-	-	21
Mangano et al. (2012)	Retrospective cohort	No comparison	26	-	-	-	26
Mangano et al. (2013)	Retrospective cohort	No comparison	22	-	-	-	22
Menchini-Fabris et al. (2019)	Retrospective cohort	No comparison	76	-	-	-	76
Mijiritsky et al. (2021)	Retrospective cohort	No comparison	23	-	-	-	23
Noelken, Moergel, Pausch, et al., 2018	Retrospective cohort	No comparison	26	-	-	-	26
Norton (2011)	Retrospective cohort	No comparison	68	-	-	-	68
Paul and Held (2013)	Retrospective cohort	No comparison	31	-	-	-	31
Ribeiro et al. (2008)	Retrospective cohort	No comparison	46	-	-	-	46
Ross et al. (2014)	Retrospective Cohort	No comparison	47	-	-	-	47
Saedi Gerami et al. (2020)	Retrospective Cohort	No comparison	18	-	-	-	18
Shanelec (2005)	Retrospective Cohort	No comparison	100	-	-	-	100
Spinato et al. (2012)	Retrospective Cohort	No comparison	45	-	-	-	45
Tarnow et al. (2014)	Retrospective Cohort	No comparison	34	-	-	-	34
Valentini et al. (2010)	Retrospective Cohort	No comparison	24	-	-	-	24
Van Nimwegen et al. (2016)	Retrospective Cohort	No comparison	51	-	-	-	51
Vidigal Jr. et al. (2017)	Retrospective Cohort	No comparison	53	-	-	-	53

Abbreviations: BL, bone level; NR, not reported; P, parallel/cylindrical; T, tapered; TL, tissue level.

Mean follow-up (months)	Total number of failures	Early failures <6 m	Late failures 6 m+	Survival rate (%)	Success rate (%)	Success criteria reported	Implant details	Implant diameters	Implant lengths	Implant design
12	1	1	0	97.2	97.2	Y	JDentalCare, JDEvolution	4.3–5 mm	13–15 mm	BL, T
12	0	0	0	100.0	93	Y	Nobel Active	3–4.3 mm	11.5–18 mm	BL, T
24	6	5	1	93.5	NR	N	Nobel Replace	3.5–6 mm	13–16 mm	BL, T
48	0	0	0	100	100	Y	Nobel Replace	NR	NR	BL, T
60	0	0	0	100	NR	N	Southern Co-Axis	4 mm	13–15 mm	BL, T
36	0	0	0	100	100	Y	NR	3.25–4.9 mm	10–16 mm	BL, T
24	1	1	0	97.8	NR	N	Nobel Active	4.3–5 mm	10–15 mm	BL, T
22	0	0	0	100	94	Y	Nobel Perfect	3.5–5 mm	16 mm	TL, P
58.56	0	0	0	100	100	Y	Nobel replace	3.5–5 mm		BL, T
12	0	0	0	100	NR	N	Neodent CM drive	3.5–5 mm	13–16 mm	BL, T
120	2	1	1	91	NR	N	Nobel Active	NR	NR	BL, T
18	0	0	0	100	NR	N	Straumann tapered effect	4.1 mm	12 mm	TL, P
12	0	0	0	100	NR	N	Nobel active, straumann bone level, dentium	NR	NR	BL, P or T
36	0	0	0	100	95	Y	Dentsply Astra Tech TX	NR	NR	BL, P
48	0	0	0	100	100	Y	Nobel Replace/Active	NR	NR	BL, T
12	0	0	0	100	NR	N	Nobel Replace	NR	NR	BL, T
18	0	0	0	100	NR	N	Dentsply Ankylos	3.5–4.5 mm	14–17 mm	BL, T
25	0	0	0	100	NR	N	Nobel Active	3.5–4.3 mm	NR	BL, T
33	1	1	0	98	NR	N	Nobel Replace	3.5–6 mm	13–16 mm	BL, T
23	0	0	0	100	NR	Y	Dentsply Astra Tech TX	3.5–5 mm	13–15 mm	BL, P
29	0	0	0	100	88	Y	MIS Seven	3.3–5 mm	13–16 mm	BL, T
24	1	1	0	95.2	NR	N	Bicon	NR	NR	BL, T
24	0	0	0	100	100	Y	Leone Implant System	4.1–4.8 mm	NR	BL, T
31.09	0	0	0	100	100	Y	Leone Implant System	3.3–4.8 mm	NR	BL, P
36	0	0	0	100	NR	N	Sweden & Martina, Outlink	3.75–4.1 mm	NR	BL, T
187.37	0	0	0	100	100	Y	Dentsply Xive, Frialit 2, MIS Seven	3.3–5.5 mm	13–15 mm	BL, T
30	0	0	0	100	100	Y	Dentsply, Astra Tech TX	3.5–5 mm	15–17 mm	BL, P
24	3	3	0	95.5	NR	N	Dentsply, Astra Tech TX	3.5–5 mm	11–17 mm	BL, P
40.8	0	0	0	100	100	Y	Nobel Perfect	NR	16 mm	BL, T
27.1	3	3	0	93.5	93.5	Y	Conexão	3.5–6 mm	10–15 mm	BL, T
60	0	0	0	100	100	Y	Nobel Replace	3.5–4.3 mm	13–16 mm	TL, T
12	0	0	0	100	NR	N	NR	NR	NR	NR
18	2	2	0	98	98	Y	Bränemark Mark IV	4 mm	13–18 mm	BL, P
32	0	0	0	100	NR	N	Zimmer Screw-Vent	3.7–4.7 mm	11.5–16 mm	BL, P
27	0	0	0	100	NR	N	NR	NR	NR	NR
34	0	0	0	100	NR	N	Dentsply, Astra Tech TX	4.5–5 mm	13 mm +	BL, P
48	2	2	0	96.9	NR	Y	BioMet 3i, Certain	3.25–4.5 mm	10–15 mm	BL, P
51	2	2	0	96.2	NR	N	NR	NR	NR	NR

TABLE 6 Comparison of weighed survival rates and weighed average study time by inclusion criteria and publication year.

	Entire timeline				Within first 6 months			
	Analyzed sample		Survival % (Overall survival)		Analyzed sample		Survival % (early survival)	
	Number of Studies	Number of Implants	Avg. study time (years)	Survival % (Overall survival)	Number of studies	Number of implants	Avg. study time (years)	Survival % (early survival)
Overall	68	2531	2.665 (2.272; 3.136)	97.708 (96.911; 98.442)	67	2493	2.665 (2.272; 3.136)	98.275 (97.571; 98.819)
Medical status								
Healthy	41	1329	3.212 (2.706; 4.114)	97.413 (96.026; 98.353)	40	1291	3.212 (2.706; 4.114)	97.986 (97.117; 98.764)
Smokers	20	808	1.967 (1.513; 2.350)	98.806 (97.454; 99.578)	20	808	1.967 (1.513; 2.350)	99.010 (97.826; 99.660)
Occlusal scheme								
Contacts	10	337	2.294 (1.722; 2.983)	97.498 (95.142; 99.359)	10	337	2.294 (1.722; 2.983)	98.813 (95.763; 100.00)
No contacts	47	1746	2.861 (2.392; 3.565)	97.410 (96.322; 98.280)	46	1708	2.861 (2.392; 3.565)	97.892 (97.099; 98.584)
Facial bone wall								
Defects	17	698	2.484 (1.773; 3.358)	98.200 (96.543; 99.149)	17	698	2.484 (1.773; 3.358)	98.567 (97.228; 99.381)
Intact	42	1342	2.581 (2.160; 3.144)	97.660 (96.311; 98.576)	41	1304	2.581 (2.160; 3.144)	98.160 (97.253; 98.876)
Soft tissue quality								
Excluded	8	245	3.155 (2.532; 4.567)	98.387 (95.901; 99.590)	8	245	3.155 (2.532; 4.567)	98.776 (96.954; 99.682)
Included	17	745	2.293 (1.630; 3.051)	98.627 (97.538; 99.459)	17	745	2.293 (1.630; 3.051)	98.792 (97.751; 99.538)
Gap dimension								
Less than 2 mm	8	341	2.491 (2.084; 3.841)	95.918 (94.167; 97.838)	8	341	2.491 (2.084; 3.841)	96.481 (95.125; 98.138)
More than 2 mm	12	472	2.322 (1.433; 5.195)	99.014 (96.589; 100.00)	12	472	2.322 (1.433; 5.195)	99.153 (97.056; 100.00)
Mucoperiosteal flap								
Flap	14	482	2.851 (1.996; 3.938)	97.067 (95.355; 98.605)	14	482	2.851 (1.996; 3.938)	97.718 (96.230; 98.930)
Flapless	49	1763	2.601 (2.185; 3.275)	97.928 (96.733; 98.727)	48	1725	2.601 (2.185; 3.275)	98.319 (97.417; 98.994)
Endodontic infection								
No infection	18	618	2.287 (1.869; 2.761)	96.162 (93.930; 97.851)	17	580	2.287 (1.869; 2.761)	97.069 (95.644; 98.404)
Incl. chronic / excl. acute	24	910	2.168 (1.674; 3.644)	98.892 (97.806; 99.579)	24	910	2.168 (1.674; 3.644)	99.121 (98.064; 99.663)
Periodontal disease								
Excluded	43	1435	2.479 (2.035; 3.004)	97.387 (96.113; 98.370)	41	1397	2.479 (2.035; 3.004)	98.210 (97.183; 98.995)
Included	10	374	3.201 (2.111; 6.526)	98.202 (95.781; 99.512)	10	374	3.201 (2.111; 6.526)	98.396 (96.154; 99.525)
Insertion torque								
35 and more	24	841	2.541 (1.912; 3.422)	97.517 (96.447; 98.485)	24	841	2.541 (1.912; 3.422)	98.216 (97.225; 99.041)
Less than 35	19	575	3.089 (2.297; 5.169)	98.117 (96.352; 99.218)	19	575	3.089 (2.297; 5.169)	98.261 (96.593; 99.302)

TABLE 6 (Continued)

	Entire timeline				Within first 6 months			
	Analyzed sample		Analyzed sample		Analyzed sample		Analyzed sample	
	Number of Studies	Number of Implants	Survival % (Overall survival)	Avg. study time (years)	Number of studies	Number of implants	Survival % (early survival)	
Bone graft								
Autogenous	11	378	97.269 (94.778; 99.322)	3.655 (2.642; 6.937)	11	378	97.619 (95.455; 99.392)	p = .44
Xenograft	21	617	98.063 (96.614; 99.255)	2.481 (1.755; 3.459)	21	617	98.379 (97.116; 99.372)	
Soft tissue graft								
No	61	2171	97.604 (96.566; 98.407)	2.723 (2.332; 3.296)	60	2133	98.265 (97.530; 98.877)	p = .96
Yes	7	360	98.335 (97.224; 99.380)	2.318 (1.609; 3.376)	7	360	98.333 (97.222; 99.381)	
Publication year								
Before 2012	17	689	96.262 (94.270; 97.620)	2.028 (1.700; 2.460)	16	651	97.235 (95.878; 98.294)	p = .04*
From 2012	51	1842	98.249 (97.425; 98.912)	2.904 (2.416; 3.620)	51	1842	98.643 (97.951; 99.200)	

Note: Values are presented as means (95% CI). Comparisons as of bootstrap tests. Statistically significant p-values are marked with an asterisk (\*\*).

Moergel, Pausch, et al., 2018; Norton, 2011; Rosa et al., 2014; Slagter et al., 2021; Valentini et al., 2010; Zuiderveld et al., 2018). The thickness of facial bone was only considered in eight studies (Bittner et al., 2020; Bushahri et al., 2021; Cardaropoli et al., 2019; Groenendijk et al., 2017; Kolerman, Nissan, Rahmanov, et al., 2016; Noelken, Moergel, Pausch, et al., 2018; Seyssens et al., 2020; Yang et al., 2019), with thicknesses ranging from 0 to 1.6 mm, and no studies reported a minimum of 1 mm facial bone thickness as an inclusion criterion.

### 3.5.6 | Mucoperiosteal flap

Flapless immediate implant placement was performed in 49 of the included studies (Arora & Ivanovski, 2018a, 2018b; Berberi, Sabbagh, et al., 2014; Bittner et al., 2020; Block et al., 2009; Bonnet et al., 2018; Bruno et al., 2014; Bushahri et al., 2021; Cabello et al., 2013; Canullo et al., 2010; Canullo, Goglia, et al., 2009; Canullo & Rasperini, 2007; Cardaropoli et al., 2015, 2019; Cosyn et al., 2016; Crespi et al., 2008; Degidi et al., 2013; Ferrara et al., 2006; Grandi et al., 2013; Grandi, Garuti, Samarani, et al., 2012; Groenendijk et al., 2017, 2021; Groisman et al., 2003; Hartlev et al., 2013; Kan et al., 2011; Khzam et al., 2014; Ma et al., 2019; Malchiodi et al., 2013; Menchini-Fabris et al., 2019; Migliorati et al., 2015; Mijiritsky et al., 2021; Noelken et al., 2011; Noelken, Moergel, Pausch, et al., 2018; Paul & Held, 2013; Pieri et al., 2011; Ribeiro et al., 2008; Rosa et al., 2014; Saedi Germi et al., 2020; Sato et al., 2017; Seyssens et al., 2020; Shanelec, 2005; Slagter et al., 2021; Spinato et al., 2012; Tarnow et al., 2014; Tortamano et al., 2010; Van Nimwegen et al., 2016; Vidigal Jr. et al., 2017; Yang et al., 2019; Zuiderveld et al., 2018). The use of a minimal mucoperiosteal flap was reported in three studies (Berberi, Noujeim, et al., 2014; Cosyn et al., 2011; Cristalli et al., 2015), with a further 11 studies reporting raising a full-thickness mucoperiosteal flap for the purpose of extraction and immediate implant placement (Calvo-Guirado et al., 2009; Cooper et al., 2014; Di Alberti et al., 2012; Ganeles et al., 2017; Kolerman, Nissan, Rahmanov, et al., 2016; Mangano et al., 2012, 2013; Norton, 2011; Raes, Eghbali, et al., 2018; Ross et al., 2014; Valentini et al., 2010).

### 3.5.7 | Presence of endodontic infection

Eighteen studies reported the presence of endodontic infection as an exclusion criteria (Berberi, Noujeim, et al., 2014; Berberi, Sabbagh, et al., 2014; Block et al., 2009; Canullo & Rasperini, 2007; Cosyn et al., 2016; Degidi et al., 2013; Ferrara et al., 2006; Groisman et al., 2003; Hartlev et al., 2013; Khzam et al., 2014; Kolerman, Nissan, Rahmanov, et al., 2016; Pieri et al., 2011; Ribeiro et al., 2008; Spinato et al., 2012; Tarnow et al., 2014; Tortamano et al., 2010; Valentini et al., 2010; Zuiderveld et al., 2018), with eight studies excluding acute infection (Canullo et al., 2010; Canullo, Goglia, et al., 2009; Cardaropoli et al., 2015, 2019; Cosyn et al., 2011; Degidi et al., 2014;



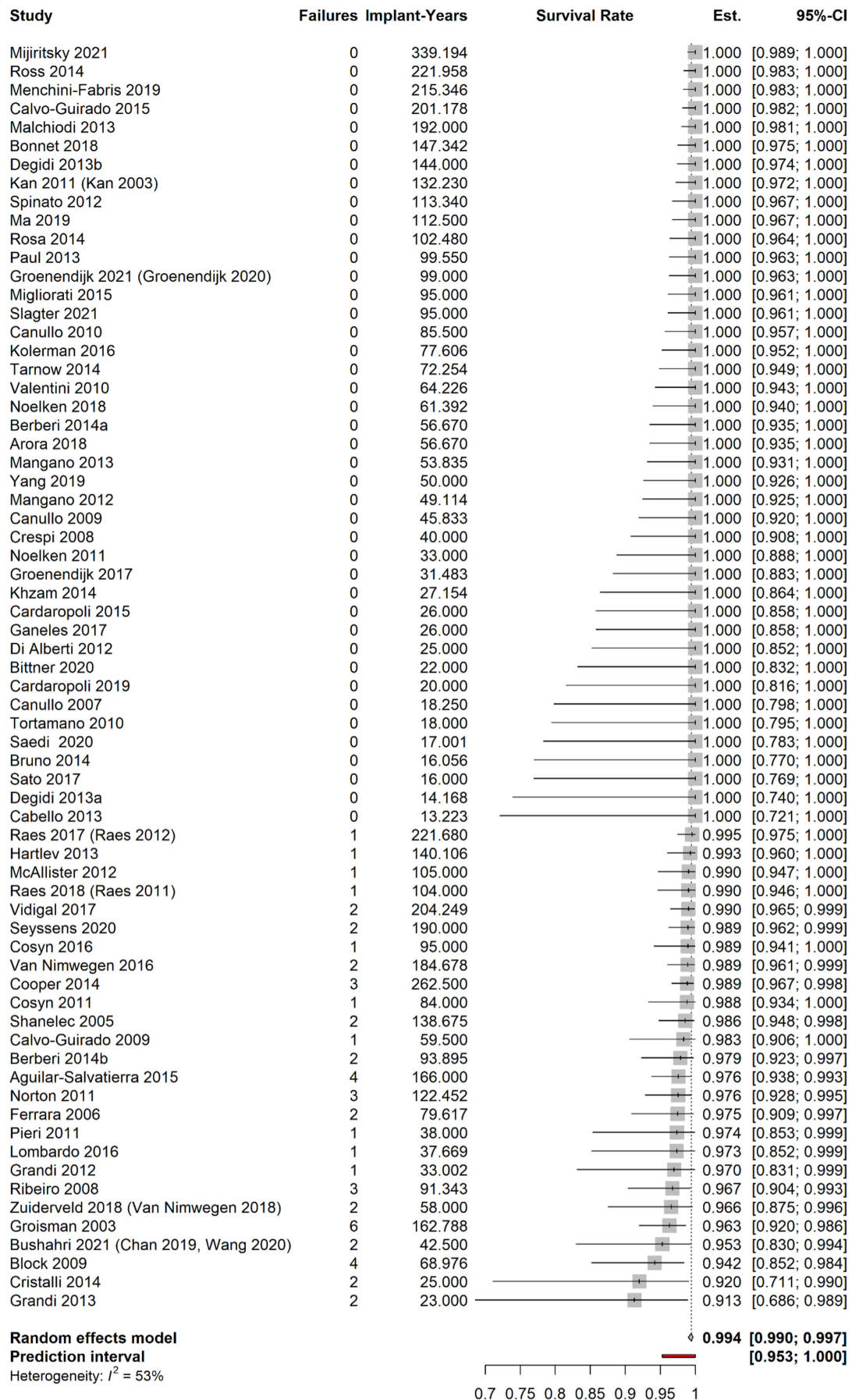


FIGURE 2 Estimated survival rate per observed implant-years for each study with calculated mean survival rate and prediction interval from meta-analysis.

TABLE 7 Results of the meta-analysis (first line) with an additional sensitivity analysis. Influential studies removed: Groisman et al. (2003), Block et al. (2009), Grandi et al. (2013), and Cristalli et al. (2015).

Analysis	Mean $S_Y$ + 95% CI	PI	Heterogeneity $I^2$ + 95% CI
Main model	99.4% (99.0%; 99.7%)	(95.3%; 100%)	53% (25%; 74%)
Influential studies removed	99.5% (99.1%; 99.7%)	(97.5%; 100%)	34% (0%; 64%)

Note: Mean  $S_Y$  = Estimated mean survival rate per observed implant-year.  
Abbreviations:  $I^2$  = heterogeneity measure; PI, prediction interval.

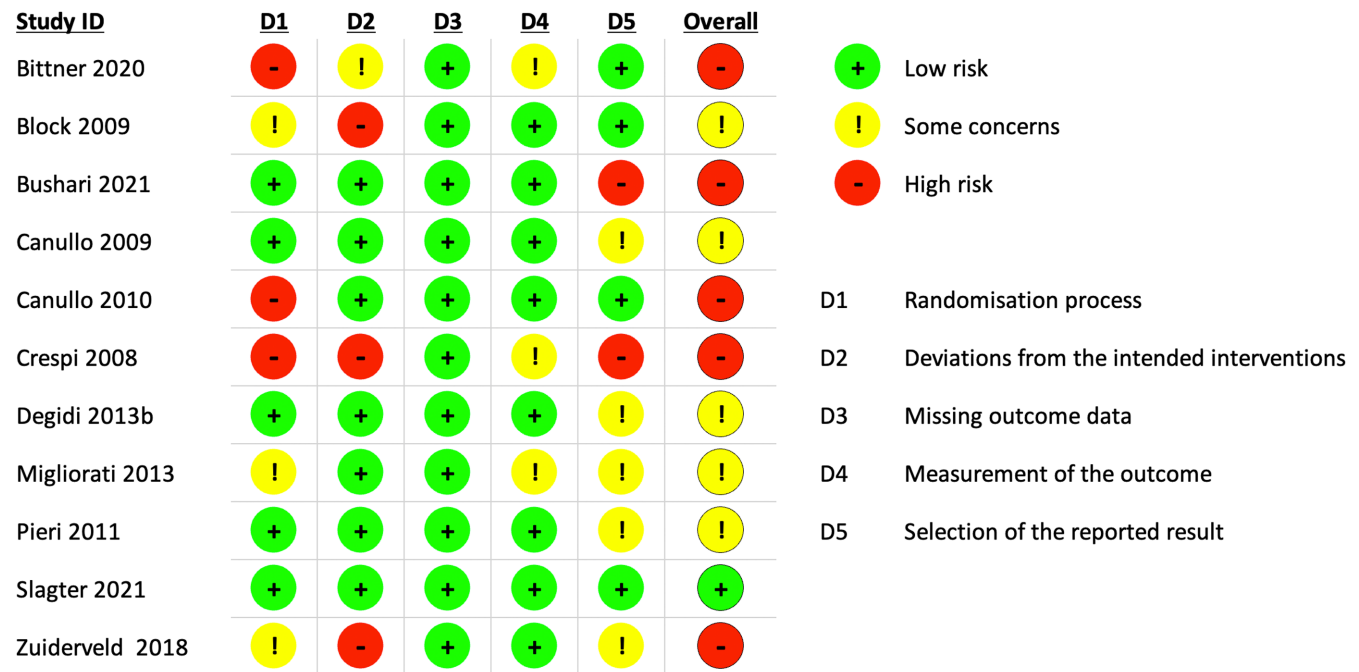


FIGURE 3 Risk of bias assessment for randomized control trials using the Cochrane RoB2 tool.

McAllister et al., 2012; Yang et al., 2019) and sixteen studies included sites with chronic infection and only excluded acute endodontic infection (Arora & Ivanovski, 2018a, 2018b; Bittner et al., 2020; Calvo-Guirado et al., 2009; Crespi et al., 2008; Cristalli et al., 2015; Di Alberti et al., 2012; Grandi et al., 2013; Grandi, Garuti, Samarani, et al., 2012; Groenendijk et al., 2017, 2021; Kan et al., 2011; Malchiodi et al., 2013; Mangano et al., 2012; Migliorati et al., 2015; Mijiritsky et al., 2021; Noelken, Moergel, Pausch, et al., 2018). Studies including chronic endodontic infection often reported that some sites with apical fenestration of the labial cortical bone were included. However, no reports mentioned the presence of a chronic draining fistula and breach of the labial mucosa as being included.

### 3.5.8 | Presence of periodontal disease

The presence of periodontal disease was an exclusion criterion in 43 studies (Aguilar-Salvatierra et al., 2016; Arora & Ivanovski, 2018a, 2018b; Berberi, Noujeim, et al., 2014; Berberi, Sabbagh, et al., 2014;

Bittner et al., 2020; Block et al., 2009; Bonnet et al., 2018; Bushahri et al., 2021; Cabello et al., 2013; Canullo et al., 2010; Canullo & Rasperini, 2007; Cardaropoli et al., 2019; Cosyn et al., 2016; Degidi et al., 2013; Ferrara et al., 2006; Groenendijk et al., 2017, 2021; Groisman et al., 2003; Hartlev et al., 2013; Khzam et al., 2014; Lombardo et al., 2016; Ma et al., 2019; Mangano et al., 2012, 2013; McAllister et al., 2012; Migliorati et al., 2015; Noelken, Moergel, Pausch, et al., 2018; Pieri et al., 2011; Raes et al., 2017; Raes, Eghbali, et al., 2018; Ribeiro et al., 2008; Rosa et al., 2014; Saedi Germi et al., 2020; Sato et al., 2017; Seyssens et al., 2020; Spinato et al., 2012; Tarnow et al., 2014; Tortamano et al., 2010; Valentini et al., 2010; Vidigal Jr. et al., 2017; Yang et al., 2019; Zuiderveld et al., 2018), with only 10 studies including patients with a history of treated periodontal disease (Calvo-Guirado et al., 2015; Cosyn et al., 2011; Cristalli et al., 2015; Di Alberti et al., 2012; Grandi et al., 2013; Grandi, Garuti, Samarani, et al., 2012; Kan et al., 2011; Kolerman, Nissan, Rahmanov, et al., 2016; Malchiodi et al., 2013; Mijiritsky et al., 2021) and 1 study excluding periodontal acute infection (Cardaropoli et al., 2015).

TABLE 8 Risk of bias assessment for nonrandomized studies using the Newcastle–Ottawa scale.

Authors & Year	Type of study	Selection	Comparability	Outcome	AHRQ
Berberi, Tehini, et al. (2014)	Controlled clinical trial	**	*	**	Fair
Cooper et al. (2014)	Controlled clinical trial	***	**	***	Good
Di Alberti et al. (2012)	Controlled clinical trial	*	*	**	Poor
Grandi et al. (2013)	Controlled clinical trial	**	*	**	Fair
Raes et al. (2017)	Controlled clinical trial	***	**	**	Good
Raes, Eghbali, et al. (2018)	Controlled clinical trial	**	*	**	Fair
Aguilar-Salvatierra et al. (2016)	Prospective cohort	**	*	**	Fair
Berberi, Noujeim, et al. (2014)	Prospective cohort	**	*	**	Fair
Cabello et al. (2013)	Prospective cohort	**	*	**	Fair
Calvo-Guirado et al. (2009)	Prospective cohort	**	*	**	Fair
Calvo-Guirado et al. (2015)	Prospective cohort	**	*	**	Fair
Canullo and Rasperini (2007)	Prospective cohort	**	*	**	Fair
Cardaropoli et al. (2015)	Prospective cohort	**	*	**	Fair
Cardaropoli et al. (2019)	Prospective cohort	**	*	**	Fair
Cosyn et al. (2011)	Prospective cohort	**	*	***	Fair
Cosyn et al. (2016)	Prospective cohort	**	*	**	Fair
Cristalli et al. (2015)	Prospective cohort	**	*	**	Fair
Ferrara et al. (2006)	Prospective cohort	**	*	***	Fair
Ganeles et al. (2017)	Prospective cohort	**	*	***	Fair
Grandi, Garuti, Samarani, et al. (2012)	Prospective cohort	**	*	**	Fair
Groenendijk et al. (2021)	Prospective cohort	***	*	**	Good
Groisman et al. (2003)	Prospective cohort	**	*	***	Fair
Kan et al. (2011)	Prospective cohort	***	*	***	Good
Ma et al. (2019)	Prospective cohort	**	*	**	Fair
Malchiodi et al. (2013)	Prospective cohort	***	*	***	Good
McAllister et al. (2012)	Prospective cohort	**	*	***	Fair
Noelken et al. (2011)	Prospective cohort	**	*	***	Fair
Rosa et al. (2014)	Prospective cohort	**	*	**	Fair
Sato et al. (2017)	Prospective cohort	**	*	**	Fair
Seyssens et al. (2020)	Prospective cohort	***	*	***	Good
Tortamano et al. (2010)	Prospective cohort	***	*	***	Good
Yang et al. (2019)	Prospective cohort	***	**	**	Good
Arora and Ivanovski (2018a)	Retrospective cohort	***	*	***	Good
Bonnet et al. (2018)	Retrospective cohort	**	*	***	Fair
Bruno et al. (2014)	Retrospective cohort	***	*	**	Good
Degidi et al. (2013)	Retrospective cohort	*	*	***	Poor
Groenendijk et al. (2017)	Retrospective cohort	**	*	**	Fair
Hartlev et al. (2013)	Retrospective cohort	***	*	**	Good
Khzam et al. (2014)	Retrospective cohort	***	*	**	Good
Kolerman, Nissan, Rahmanov, et al. (2016)	Retrospective cohort	***	*	***	Good
Lombardo et al. (2016)	Retrospective cohort	***	*	***	Good
Mangano et al. (2012)	Retrospective cohort	**	*	***	Fair
Mangano et al. (2013)	Retrospective cohort	**	*	***	Fair
Menchini-Fabris et al. (2019)	Retrospective cohort	***	**	***	Good

TABLE 8 (Continued)

Authors & Year	Type of study	Selection	Comparability	Outcome	AHRQ
Mijiritsky et al. (2021)	Retrospective cohort	***	*	***	Good
Noelken, Moergel, Pausch, et al., 2018	Retrospective cohort	***	**	***	Good
Norton (2011)	Retrospective cohort	**	*	***	Fair
Paul and Held (2013)	Retrospective cohort	**	*	***	Fair
Ribeiro et al. (2008)	Retrospective cohort	***	*	***	Good
Ross et al. (2014)	Retrospective cohort	**	*	***	Fair
Saedi Germi et al. (2020)	Retrospective cohort	***	*	***	Good
Shanelec (2005)	Retrospective cohort	**	*	***	Fair
Spinato et al. (2012)	Retrospective cohort	**	*	***	Fair
Tarnow et al. (2014)	Retrospective cohort	**	**	***	Fair
Valentini et al. (2010)	Retrospective cohort	**	*	***	Fair
Van Nimwegen et al. (2016)	Retrospective cohort	***	**	***	Good
Vidigal Jr. et al. (2017)	Retrospective cohort	**	**	***	Fair

Note: The asterisks are part of the Newcastle Ottawa Scale (NOS) for risk of bias assessment, so are described in the manual for NOS: [https://www.ohri.ca/programs/clinical\\_epidemiology/oxford.asp](https://www.ohri.ca/programs/clinical_epidemiology/oxford.asp)

### 3.5.9 | Facial gap (horizontal defect dimension—HDD)

The presence of a gap between the implant and facial bone wall was reported in 56 studies (Arora & Ivanovski, 2018a, 2018b; Berberi, Noujeim, et al., 2014; Berberi, Sabbagh, et al., 2014; Bittner et al., 2020; Block et al., 2009; Bonnet et al., 2018; Bruno et al., 2014; Bushahri et al., 2021; Cabello et al., 2013; Calvo-Guirado et al., 2009; Canullo et al., 2010; Canullo, Goglia, et al., 2009; Canullo & Rasperini, 2007; Cardaropoli et al., 2015, 2019; Cosyn et al., 2016; Cristalli et al., 2015; Degidi et al., 2013; Di Alberti et al., 2012; Ferrara et al., 2006; Grandi et al., 2013; Grandi, Garuti, Samarani, et al., 2012; Groenendijk et al., 2017, 2021; Groisman et al., 2003; Hartlev et al., 2013; Kan et al., 2011; Khzam et al., 2014; Kolerman, Nissan, Rahmanov, et al., 2016; Lombardo et al., 2016; Ma et al., 2019; Mangano et al., 2012; Migliorati et al., 2015; Mijiritsky et al., 2021; Noelken et al., 2011; Noelken, Moergel, Pausch, et al., 2018; Norton, 2011; Paul & Held, 2013; Pieri et al., 2011; Raes, Eghbali, et al., 2018; Rosa et al., 2014; Ross et al., 2014; Saedi Germi et al., 2020; Sato et al., 2017; Seyssens et al., 2020; Shanelec, 2005; Slagter et al., 2021; Spinato et al., 2012; Tarnow et al., 2014; Tortamano et al., 2010; Valentini et al., 2010; Van Nimwegen et al., 2016; Vidigal Jr. et al., 2017; Yang et al., 2019; Zuiderveld et al., 2018). The size of the gaps varied between 1 and 4 mm, with most studies reporting placing biomaterial into the gap. Biomaterials utilized for socket grafting in conjunction with Type 1A protocols included deproteinized bovine bone mineral xenograft (22 studies—Arora & Ivanovski, 2018a; Arora & Ivanovski, 2018b; Bittner et al., 2020; Bonnet et al., 2018; Bruno et al., 2014; Canullo, Goglia, et al., 2009; Canullo & Rasperini, 2007; Cardaropoli et al., 2015; Cardaropoli et al., 2019; Cosyn et al., 2011; Cosyn et al., 2016; Cristalli et al., 2015; Degidi et al., 2013; Grandi et al., 2013; Grandi, Garuti,

Samarani, et al., 2012; Groenendijk et al., 2017; Groenendijk et al., 2021; Khzam et al., 2014; Migliorati et al., 2015; Paul & Held, 2013; Seyssens et al., 2020; Valentini et al., 2010; Vidigal Jr. et al., 2017), autogenous bone (11 studies—Berberi, Noujeim, et al., 2014; Berberi, Sabbagh, et al., 2014; Ferrara et al., 2006; Ganeles et al., 2017; Groisman et al., 2003; Kan et al., 2011; Malchiodi et al., 2013; Mijiritsky et al., 2021; Noelken et al., 2011; Noelken, Moergel, Pausch, et al., 2018; Rosa et al., 2014), autogenous bone and xenograft mixture (six studies—Norton, 2011; Pieri et al., 2011; Shanelec, 2005; Slagter et al., 2021; Van Nimwegen et al., 2016; Zuiderveld et al., 2018), human allograft (six studies—Block et al., 2009; Bushahri et al., 2021; Kolerman, Nissan, Rahmanov, et al., 2016; Ross et al., 2014; Saedi Germi et al., 2020; Tarnow et al., 2014), alloplastic graft materials (three studies—Canullo et al., 2010; Lombardo et al., 2016; Mangano et al., 2012), and alloplastic/allograftor/xenograft on the same study (three studies—McAllister et al., 2012; Sato et al., 2017; Yang et al., 2019). Only one study reported placing large implants to minimize the gap between the implant and the extraction socket's facial bone wall (Ferrara et al., 2006).

### 3.5.10 | Extraction

Minimally traumatic extraction techniques to minimize damage to the surrounding alveolar bone and soft tissues were reported in 59 studies (Arora & Ivanovski, 2018a, 2018b; Berberi, Noujeim, et al., 2014; Bittner et al., 2020; Block et al., 2009; Bonnet et al., 2018; Bruno et al., 2014; Bushahri et al., 2021; Cabello et al., 2013; Canullo et al., 2010; Canullo, Goglia, et al., 2009; Canullo & Rasperini, 2007; Cardaropoli et al., 2015, 2019; Cosyn et al., 2011, 2016; Crespi et al., 2008; Cristalli et al., 2015; Degidi et al., 2013, 2014; Di Alberti et al., 2012; Ferrara et al., 2006; Grandi et al., 2013; Grandi, Garuti,

TABLE 9 Reported study criteria for inclusion/exclusion categorized based on risk assessment.

Authors & year	Medical status—standardized reporting	Occlusal scheme	Occlusal parafunction included or excluded (I/E/NR)	Pre-op gingival margin position	Soft tissue quality (thin phenotype)—include I or exclude E	CTG performed at time of implant placement (Y/N)	Bone Anchorage standardized	Facial Bone Wall presence—small defects up to 3 mm, large 3 mm +	Facial Bone Wall thickness
Bittner et al. (2020)	Healthy Patients	No Contacts	NR	E	I	N	NR	Intact Facial Bone	0.8 mm
Block et al. (2009)	Healthy Patients	No Contacts	NR	E	NR	N	Sufficient Bone	Intact Facial Bone	NR
Bushahri et al. (2021)	Healthy Patients	No Contacts	NR	NR	I	N	≥4 mm bone height	Small Defects Included	1 mm
Canullo, Goglia, et al. (2009)	Healthy Patients	No Contacts	NR	NR	I	N	≥3 mm bone height	Intact Facial Bone	NR
Canullo et al. (2010)	Healthy Patients	No Contacts	NR	E	I	N	≥4 mm bone height	Intact Facial Bone	NR
Crespi et al. (2008)	Healthy Patients	Limited Contacts	E	NR	NR	N	≥4 mm bone height	Intact Facial Bone	NR
Degidi et al. (2014)	Light Smokers	No Contacts	E	NR	NR	N	Sufficient Bone	Intact Facial Bone	NR
Migliorati et al. (2015)	Healthy Patients	No Contacts	NR	E	I	Y	Sufficient Bone	Small Defects Included	NR
Pieri et al. (2011)	Light Smokers	No Contacts	E	NR	NR	N	≥4 mm bone height	Intact Facial Bone	NR
Slagter et al. (2021)	NR	NR	NR	NR	NR	N	NR	Large defects Included	NR
Zuiderveld et al. (2018)	Healthy Patients	No Contacts	NR	NR	I	Y	NR	Large defects Included	NR
Berberi, Sabbagh, et al. (2014)	Healthy Patients	Limited Contacts	NR	NR	NR	N	≥5 mm bone height	Intact Facial Bone	NR
Cooper et al. (2014)	Healthy Patients	No Contacts	NR	NR	NR	N	NR	Large defects Included	NR
Di Alberti et al. (2012)	NR	Full Contact	NR	E	NR	N	NR	NR	NR
Grandi et al. (2013)	Diabetes and Light Smokers	No Contacts	NR	NR	NR	N	NR	Intact Facial Bone	NR

Mucoperiosteal flap	Presence of endodontic infection	Presence of periodontal disease	Presence of buccal gap (Y/N)	Gap dimensions (mm)	Graft material (none, auto, allo, xeno)	Extraction	Primary implant stability—insertion torque	Primary implant stability—resonance frequency analysis
Flapless	Chronic Infection Included	Periodontal disease excluded	Y	$\bar{x}$ = 2.9 mm	Xenograft or None	Flapless	>20Ncm	NR
Flapless	Absence of infection	Periodontal disease excluded	Y	NR	Allograft	Minimally traumatic using periostomes	NR	>71 ISQ
Flapless	NR	Periodontal disease excluded	Y	$\bar{x}$ = 2.7 mm	Allograft	Minimally traumatic	≥30	NR
Flapless	Absence of Acute Infection	NR	Y	>1 mm	Xenograft	Minimally traumatic using periostomes	32-45Ncm	NR
Flapless	Absence of Acute Infection	Periodontal disease excluded	Y	>1 mm	Alloplastic	Minimally traumatic using periostomes	32-45Ncm	NR
Flapless	Chronic Infection Included	NR	NR	NR	NR	Minimally traumatic	>25Ncm	>60 ISQ
Flapless	Absence of Acute Infection	NR	Y	2 mm	NR	Minimally traumatic	≥25Ncm	≥60 ISQ
Flapless	Chronic Infection Included	Periodontal disease excluded	Y	NR	Xenograft	Minimally traumatic	NR	NR
Flapless	Absence of infection	Periodontal disease excluded	Y	NR	Autogenous and Xenograft mix	Minimally traumatic using periostomes	≥40Ncm	NR
Flapless	NR	NR	Y	NR	Autogenous and Xenograft mix	Minimally traumatic using periostomes	NR	NR
Flapless	Absence of infection	Periodontal disease excluded	Y	NR	Autogenous and Xenograft mix	Minimally traumatic	≥45Ncm	NR
Flapless	Absence of infection	Periodontal disease excluded	Y	NR	Autogenous	NR	≥32Ncm	NR
Full-Thickness Flap	NR	NR	NR	NR	None	NR	NR	NR
Full-Thickness Flap	Chronic Infection Included	Treated Periodontal Disease Included	Y	2 mm	NR	Minimally traumatic using periostomes	≥40Ncm	>60 ISQ
Flapless	Chronic Infection Included	Treated Periodontal Disease Included	Y	NR	Xenograft	Minimally traumatic	≥45Ncm	NR

TABLE 9 (Continued)

Authors & year	Medical status—standardized reporting	Occlusal scheme	Occlusal parafunction included or excluded (I/E/NR)	Pre-op gingival margin position	Soft tissue quality (thin phenotype)—include I or exclude E	CTG performed at time of implant placement (Y/N)	Bone Anchorage standardized	Facial Bone Wall presence—small defects up to 3 mm, large 3 mm +	Facial Bone Wall thickness
Raes et al. (2017)	Healthy Patients	No Contacts	NR	NR	NR	N	NR	NR	NR
Raes, Eghbali, et al. (2018)	Healthy Patients	No Contacts	NR	E	E	N	Sufficient Bone	Intact Facial Bone	NR
Aguilar-Salvatierra et al. (2016)	Diabetes	Limited Contacts	NR	NR	NR	N	≥5 mm bone height	NR	NR
Berberi, Noujeim, et al. (2014)	Healthy Patients	Limited Contacts	NR	NR	NR	N	≥5 mm bone height	Intact Facial Bone	NR
Cabello et al. (2013)	Light Smokers	No Contacts	I	E	I	N	NR	Intact Facial Bone	NR
Calvo-Guirado et al. (2009)	Light Smokers	NR	I	NR	I	N	NR	Large defects Included	NR
Calvo-Guirado et al. (2015)	Light Smokers	Limited Contacts	NR	NR	I	N	≥5 mm bone height	NR	NR
Canullo and Rasperini (2007)	Light Smokers	No Contacts	NR	NR	I	N	NR	Intact Facial Bone	NR
Cardaropoli et al. (2015)	Light Smokers	No Contacts	NR	E	NR	N	NR	Intact Facial Bone	NR
Cardaropoli et al. (2019)	Healthy Patients	No Contacts	NR	E	NR	N	Sufficient Bone	Intact Facial Bone	0.8 mm
Cosyn et al. (2011)	Healthy Patients	No Contacts	E	E	E	N	≥5 mm bone height	Intact Facial Bone	NR
Cosyn et al. (2016)	Healthy Patients	No Contacts	E	E	E	N	≥5 mm bone height	Intact Facial Bone	NR
Cristalli et al. (2015)	Light Smokers	Limited Contacts	E	E	NR	N	≥4 mm bone height	Intact Facial Bone	NR
Ferrara et al. (2006)	Healthy Patients	No Contacts	E	NR	NR	N	Sufficient Bone	Intact Facial Bone	NR
Ganeles et al. (2017)	Light Smokers	No Contacts	E	NR	NR	N	NR	NR	NR

Mucoperiosteal flap	Presence of endodontic infection	Presence of periodontal disease	Presence of buccal gap (Y/N)	Gap dimensions (mm)	Graft material (none, auto, allo, xeno)	Extraction	Primary implant stability—insertion torque	Primary implant stability—resonance frequency analysis
NR	NR	Periodontal disease excluded	NR	NR	NR	NR	NR	NR
Full-Thickness Flap	NR	Periodontal disease excluded	Y	<2mm or >2mm	None	Minimally traumatic	≥25Ncm	NR
NR	NR	Periodontal disease excluded	NR	NR	NR	NR	≥35Ncm	>60 ISQ
Minimal Mucoperiosteal Flap	Absence of infection	Periodontal disease excluded	Y	NR	Autogenous	Minimally traumatic using periostomes	≥32Ncm	NR
Flapless	NR	Periodontal disease excluded	Y	NR	None	Minimally traumatic with Benex	NR	NR
Full-Thickness Flap	Chronic Infection Included	NR	Y	1 mm	None	NR	NR	>64 ISQ
NR	NR	Treated Periodontal Disease Included	NR	NR	NR	NR	NR	>60 ISQ
Flapless	Absence of infection	Periodontal disease excluded	Y	NR	Xenograft	Minimally traumatic using periostomes	32-45Ncm	NR
Flapless	Absence of Acute Infection	Acute periodontal infection excluded	Y	NR	Xenograft	Minimally traumatic	≥50Ncm	NR
Flapless	Absence of Acute Infection	Periodontal disease excluded	Y	≥2mm	Xenograft	Minimally traumatic	≥35Ncm	NR
Minimal Mucoperiosteal Flap	Absence of Acute Infection	Treated Periodontal Disease Included	NR	NR	Xenograft	Minimally traumatic using periostomes	≥35Ncm	NR
Flapless	Absence of infection	Periodontal disease excluded	Y	NR	Xenograft	Minimally traumatic using periostomes	≥35Ncm	NR
Minimal Mucoperiosteal Flap	Chronic Infection Included	Treated Periodontal Disease Included	Y	$\bar{x}$ =2.73 mm	Xenograft	Minimally traumatic using periostomes	≥35Ncm	NR
Flapless	Absence of infection	Periodontal disease excluded	Minimal	<1mm	Autogenous	Minimally traumatic	NR	NR
Full-Thickness Flap	NR	NR	NR	NR	Autogenous	NR	≥35Ncm	NR



TABLE 9 (Continued)

Authors & year	Medical status—standardized reporting	Occlusal scheme	Occlusal parafunction included or excluded (I/E/NR)	Pre-op gingival margin position	Soft tissue quality (thin phenotype)—include I or exclude E	CTG performed at time of implant placement (Y/N)	Bone Anchorage standardized	Facial Bone Wall presence—small defects up to 3 mm, large 3 mm +	Facial Bone Wall thickness
Grandi, Garuti, Samarani, et al. (2012)	Healthy Patients	No Contacts	NR	NR	NR	N	NR	Intact Facial Bone	NR
Groenendijk et al. (2021)	Light Smokers	NR	E	NR	I	N	≥5 mm bone height	Large defects Included	NR
Groisman et al. (2003)	NR	No Contacts	NR	E	NR	N	NR	NR	NR
Kan et al. (2011)	Healthy Patients	NR	E	E	I	N	NR	Intact Facial Bone	NR
Ma et al. (2019)	Healthy Patients	No Contacts	E	NR	NR	N	≥4 mm bone height	Small Defects Included	NR
Malchiodi et al. (2013)	Light Smokers	No Contacts	E	NR	E	N	NR	NR	NR
McAllister et al. (2012)	Healthy Patients	NR	E	NR	NR	N	NR	Small Defects Included	NR
Noelken et al. (2011)	Healthy Patients	No Contacts	NR	NR	NR	N	NR	Large Defects Included	NR
Rosa et al. (2014)	Healthy Patients	NR	NR	NR	I	N	Sufficient Bone	Large Defects Included	Missing
Sato et al. (2017)	Healthy Patients	NR	E	NR	NR	N	Sufficient Bone	Intact Facial Bone	NR
Seyssens et al. (2020)	Healthy, excluded smokers	No Contacts		E	NR	N	≥5 mm bone height	Intact Facial Bone	0.8 mm
Tortamano et al. (2010)	Healthy Patients	No Contacts	NR	NR	NR	N	Sufficient Bone	Intact Facial Bone	NR
Yang et al. (2019)	Healthy Patients	No Contacts	NR	NR	NR	N	Sufficient Bone	Intact Facial Bone	0 to >1 mm
Arora and Ivanovski (2018a)	Light Smokers	No Contacts	NR	NR	NR	N	Sufficient available bone	Intact Facial Bone	NR
Bonnet et al. (2018)	Healthy Patients	No Contacts	NR	NR	NR	Y	NR	Small Defects Included	NR

Mucoperiosteal flap	Presence of endodontic infection	Presence of periodontal disease	Presence of buccal gap (Y/N)	Gap dimensions (mm)	Graft material (none, auto, allo, xeno)	Extraction	Primary implant stability—insertion torque	Primary implant stability—resonance frequency analysis
Flapless	Chronic Infection Included	Treated Periodontal Disease Included	Y	NR	Xenograft	Minimally traumatic	≥30Ncm	NR
Flapless	Chronic Infection Included	Periodontal disease excluded	Y	≥2mm	Xenograft	Minimally traumatic	NR	NR
Flapless	Absence of infection	Periodontal disease excluded	Y	>1mm	Autogenous	Minimally traumatic using periostomes	NR	NR
Flapless	Chronic Infection Included	Treated Periodontal Disease Included	Y	NR	Autogenous	Minimally traumatic	NR	NR
Flapless	NR	Periodontal disease excluded	Y	1.5–3	None	Flapless	NR	Mean of 65.1 ISQ+ -4.38
Flapless	Chronic Infection Included	Treated Periodontal Disease Included	NR	NR	Autogenous	Minimally traumatic using periostomes	NR	NR
NR	Absence of Acute Infection	Periodontal disease excluded	NR	NR	Xenograft, Allograft or Alloplastic	NR	≥35Ncm	NR
Flapless	NR	NR	Y	NR	Autogenous	Minimally traumatic	NR	NR
Flapless	NR	Periodontal disease excluded	Y	NR	Autogenous	Minimally traumatic using periostomes	≥35Ncm	NR
Flapless	NR	Periodontal disease excluded	Y	NR	Alloplastic or Xenograft	Minimally traumatic	NR	NR
Flapless	NR	Periodontal disease excluded	Y	NR	Xenograft	Minimally traumatic using periostomes	≥35Ncm	NR
Flapless	Absence of infection	Periodontal disease excluded	Y	NR	NR	Minimally traumatic	NR	NR
Flapless	Absence of Acute Infection	Periodontal disease excluded	Y	2 mm	Xenograft or Alloplastic	Minimally traumatic	≥35Ncm	NR
Flapless	Chronic Infection Included	Periodontal disease excluded	Y	NR	Xenograft	Minimally traumatic using periostomes	≥30Ncm	NR
Flapless	NR	Periodontal disease excluded	Y	NR	Xenograft	Minimally traumatic using periostomes	≥30Ncm	NR

TABLE 9 (Continued)

Authors & year	Medical status—standardized reporting	Occlusal scheme	Occlusal parafunction included or excluded (I/E/NR)	Pre-op gingival margin position	Soft tissue quality (thin phenotype)—include I or exclude E	CTG performed at time of implant placement (Y/N)	Bone Anchorage standardized	Facial Bone Wall presence—small defects up to 3 mm, large 3mm +	Facial Bone Wall thickness
Bruno et al. (2014)	Light Smokers	Limited Contacts	E	E	NR	N	Sufficient available bone	Small Defects Included	
Degidi et al. (2013)	Light Smokers	No Contacts	E	NR	NR	N	NR	Intact Facial Bone	NR
Groenendijk et al. (2017)	Healthy Patients	NR	E	NR	NR	N	≥4 mm bone height	Intact Facial Bone	0.9 mm
Hartlev et al. (2013)	Light Smokers	No Contacts	E	NR	NR	N	NR	Small Defects Included	NR
Khzam et al. (2014)	Healthy Patients	No Contacts	NR	E	NR	N	NR	Intact Facial Bone	NR
Kolerman, Nissan, Rahmanov, et al. (2016)	Light Smokers	No Contacts	E	NR	NR	Y	≥5 mm bone height	Large defects Included	<1 mm or deficient
Lombardo et al. (2016)	Healthy Patients	NR	E	NR	NR	N	NR	Intact Facial Bone	NR
Mangano et al. (2012)	Light Smokers	Limited Contacts	E	NR	E	N	NR	Intact Facial Bone	
Mangano et al. (2013)	Healthy Patients	Limited Contacts	NR	E	E	N	NR	Intact Facial Bone	NR
Menchini-Fabris et al. (2019)	Healthy Patients	NR	E	NR	NR	N	≥4 mm bone height	Intact Facial Bone	NR
Mijiritsky et al. (2021)	Healthy Patients	No Contacts	E	NR	NR	N	NR	NR	NR
Noelken, Moergel, Pausch, et al. 2018	Light Smokers	No Contacts	NR	I	I	Y	Sufficient Bone	Large defects Included	0–1.5 mm
Norton (2011)	Diabetes & Light Smoker	No Contacts	NR	NR	NR	N	NR	Defects Included	NR
Paul and Held (2013)	Light Smokers	No Contacts	NR	NR	NR	N	NR	Intact Facial Bone	NR
Ribeiro et al. (2008)	Healthy Patients	No Contacts	NR	NR	NR	N	≥3 mm bone height & ≥5 mm Bone Width	Intact Facial Bone	NR

Mucoperiosteal flap	Presence of endodontic infection	Presence of periodontal disease	Presence of buccal gap (Y/N)	Gap dimensions (mm)	Graft material (none, auto, allo, xeno)	Extraction	Primary implant stability—insertion torque	Primary implant stability—resonance frequency analysis
Flapless	NR	NR	Y	$\bar{x}$ =1.5 mm	Xenograft	Minimally traumatic	≥35Ncm	≥65 ISQ
Flapless	Absence of infection	Periodontal disease excluded	Y	NR	Xenograft	Minimally traumatic	≥25Ncm	>60 ISQ
Flapless	Chronic Infection Included	Periodontal disease excluded	Y	2 mm	Xenograft	Minimally traumatic	≥40Ncm	NR
Flapless	Absence of infection	Periodontal disease excluded	Y	<2mm	None	Minimally traumatic using periostomes	≥30Ncm	NR
Flapless	Absence of infection	Periodontal disease excluded	Y	NR	Xenograft	Minimally traumatic	≥30Ncm	NR
Full-Thickness Flap	Absence of infection	Treated Periodontal Disease Included	Y	NR	Allograft	Minimally traumatic using periostomes	≥32Ncm	NR
NR	NR	Periodontal disease excluded	Y	NR	Alloplastic	Minimally traumatic	NR	NR
Full-Thickness Flap	Chronic Infection Included	Periodontal disease excluded	Y	NR	Alloplastic	Minimally traumatic	NR	NR
Full-Thickness Flap	NR	Periodontal disease excluded	NR	NR	NR	Minimally traumatic	NR	NR
Flapless	NR	NR	NR	NR	None	Minimally traumatic using magnetic mallet	NR	NR
Flapless	Chronic Infection Included	Treated Periodontal Disease Included	Y	2 mm	Autogenous	Minimally traumatic using periostomes	≥32Ncm	NR
Flapless	Chronic Infection Included	Periodontal disease excluded	Y	NR	Autogenous	Minimally traumatic	NR	NR
Full-Thickness Flap	NR	NR	Y	1 mm	Autogenous and Xenograft mix	Minimally traumatic using periostomes	≤25Ncm	NR
Flapless	NR	NR	Y	1.5–2.5 mm	Xenograft	Flapless	NR	NR
Flapless	Absence of infection	Periodontal disease excluded	NR	NR	NR	Flapless	NR	NR

TABLE 9 (Continued)

Authors & year	Medical status—standardized reporting	Occlusal scheme	Occlusal parafunction included or excluded (I/E/NR)	Pre-op gingival margin position	Soft tissue quality (thin phenotype)—include I or exclude E	CTG performed at time of implant placement (Y/N)	Bone Anchorage standardized	Facial Bone Wall presence—small defects up to 3 mm, large 3 mm +	Facial Bone Wall thickness
Ross et al. (2014)	NR	No Contacts	NR	E	I	N	NR	Intact Facial Bone	NR
Saedi Germi et al. (2020)	Healthy Patients	NR	NR	E	E	N	Sufficient Bone	Intact Facial Bone	NR
Shanelec (2005)	NR	No Contacts	NR	I	I	Y	NR	Intact Facial Bone	NR
Spinato et al. (2012)	Healthy Patients	No Contacts	NR	NR	E	N	Sufficient Bone	Intact Facial Bone	NR
Tarnow et al. (2014)	Healthy Patients	No Contacts	E	E	NR	N	Sufficient Bone	Intact Facial Bone	NR
Valentini et al. (2010)	Healthy Patients	No Contacts	NR	NR	NR	N	Sufficient Bone	Large defects Included	NR
Van Nimwegen et al. (2016)	Healthy Patients	No Contacts	NR	NR	NR	N	NR	Intact Facial Bone	NR
Vidigal Jr. et al. (2017)	Healthy Patients	No Contacts	E	E	I	Y	Sufficient Bone	Intact Facial Bone	NR

**Risk Categorization:**

	Low Risk
	Medium Risk
	High Risk

Abbreviations: E, excluded; I, included; N, no; NR, not reported; Y, yes.

Samarani, et al., 2012; Groenendijk et al., 2017, 2021; Groisman et al., 2003; Hartlev et al., 2013; Kan et al., 2011; Khzam et al., 2014; Kolerman, Nissan, Rahmanov, et al., 2016; Lombardo et al., 2016; Ma et al., 2019; Malchiodi et al., 2013; Mangano et al., 2012, 2013; Menchini-Fabris et al., 2019; Migliorati et al., 2015; Mijiritsky et al., 2021; Noelken et al., 2011; Norton, 2011; Paul & Held, 2013; Pieri et al., 2011; Raes, Eghbali, et al., 2018; Ribeiro et al., 2008; Rosa et al., 2014; Ross et al., 2014; Saedi Germi et al., 2020; Sato et al., 2017; Seyssens et al., 2020; Shanelec, 2005; Slagter et al., 2021; Spinato et al., 2012; Tarnow et al., 2014; Tortamano et al., 2010; Van Nimwegen et al., 2016; Vidigal Jr. et al., 2017; Yang et al., 2019; Zuiderveld et al., 2018). Six Studies (Bittner et al., 2020; Ma et al., 2019; Paul & Held, 2013; Ribeiro et al., 2008; Ross et al., 2014; Spinato et al., 2012) reported that the extractions were performed via a flapless approach, while only one study reported that a mucoperiosteal flap was raised prior to tooth extraction (Valentini et al., 2010). The use of periostomes for syndesmotomy as part of the extraction process was reported in 24 studies (Arora

& Ivanovski, 2018a, 2018b; Berberi, Noujeim, et al., 2014; Block et al., 2009; Bonnet et al., 2018; Canullo et al., 2010; Canullo, Goglia, et al., 2009; Canullo & Rasperini, 2007; Cosyn et al., 2011, 2016; Cristalli et al., 2015; Di Alberti et al., 2012; Groisman et al., 2003; Hartlev et al., 2013; Kolerman, Nissan, Rahmanov, et al., 2016; Malchiodi et al., 2013; Mijiritsky et al., 2021; Norton, 2011; Pieri et al., 2011; Rosa et al., 2014; Saedi Germi et al., 2020; Seyssens et al., 2020; Shanelec, 2005; Slagter et al., 2021; Van Nimwegen et al., 2016), with one study reporting the use of a magnetic mallet (Menchini-Fabris et al., 2019) and another utilizing a vertical extraction system (Cabello et al., 2013). No studies reported the use of piezo surgery as part of the extraction process.

### 3.5.11 | Primary stability

The implant insertion torque value was the most commonly reported criteria for evaluation of primary implant stability in 42 of the included

Mucoperiosteal flap	Presence of endodontic infection	Presence of periodontal disease	Presence of buccal gap (Y/N)	Gap dimensions (mm)	Graft material (none, auto, allo, xeno)	Extraction	Primary implant stability—insertion torque	Primary implant stability—resonance frequency analysis
Full-Thickness Flap	NR	NR	Y	NR	Allograft	Flapless	≥35Ncm	NR
Flapless	NR	Periodontal disease excluded	Y	NR	Allograft	Minimally traumatic using periostomes	≥35Ncm	NR
Flapless	NR	NR	Y	NR	Autogenous and Xenograft mix	Minimally traumatic using periostomes	NR	NR
Flapless	Absence of infection	Periodontal disease excluded	Y	$\bar{x}$ =2.14mm	None	Flapless	≥35Ncm	NR
Flapless	Absence of infection	Periodontal disease excluded	Y	NR	Allograft	Minimally traumatic	≥35Ncm	NR
Full-Thickness Flap	Absence of infection	Periodontal disease excluded	Y	NR	Xenograft	Flap elevation	≥40Ncm	NR
Flapless	NR	NR	Y	NR	Autogenous and Xenograft mix	Minimally traumatic using periostomes	≥35Ncm	NR
Flapless	NR	Periodontal disease excluded	Y	NR	Xenograft	Minimally traumatic	≥35Ncm	NR

studies (Aguilar-Salvatierra et al., 2016; Arora & Ivanovski, 2018a, 2018b; Berberi, Noujeim, et al., 2014; Berberi, Sabbagh, et al., 2014; Bittner et al., 2020; Bonnet et al., 2018; Bruno et al., 2014; Bushahri et al., 2021; Canullo et al., 2010; Canullo, Goglia, et al., 2009; Canullo & Rasperini, 2007; Cardaropoli et al., 2015, 2019; Cosyn et al., 2011, 2016; Crespi et al., 2008; Cristalli et al., 2015; Degidi et al., 2013, 2014; Di Alberti et al., 2012; Ganeles et al., 2017; Grandi et al., 2013; Grandi, Garuti, Samarani, et al., 2012; Groenendijk et al., 2017; Hartlev et al., 2013; Khzam et al., 2014; Kolerman, Nissan, Rahmanov, et al., 2016; McAllister et al., 2012; Mijiritsky et al., 2021; Norton, 2011; Pieri et al., 2011; Raes, Eghbali, et al., 2018; Rosa et al., 2014; Ross et al., 2014; Saedi Germi et al., 2020; Seyssens et al., 2020; Spinato et al., 2012; Tarnow et al., 2014; Valentini et al., 2010; Van Nimwegen et al., 2016; Vidigal Jr. et al., 2017; Yang et al., 2019; Zuiderveld et al., 2018). A minimum insertion torque threshold of 30–45Ncm was used for immediate loading in 34 studies (Aguilar-Salvatierra et al., 2016; Arora & Ivanovski, 2018a, 2018b; Berberi, Noujeim, et al., 2014; Berberi, Sabbagh, et al., 2014;

Bonnet et al., 2018; Bruno et al., 2014; Bushahri et al., 2021; Canullo et al., 2010; Canullo, Goglia, et al., 2009; Canullo & Rasperini, 2007; Cardaropoli et al., 2019; Cosyn et al., 2011, 2016; Cristalli et al., 2015; Di Alberti et al., 2012; Ganeles et al., 2017; Grandi, Garuti, Samarani, et al., 2012; Groenendijk et al., 2017; Hartlev et al., 2013; Khzam et al., 2014; Kolerman, Nissan, Rahmanov, et al., 2016; McAllister et al., 2012; Mijiritsky et al., 2021; Pieri et al., 2011; Rosa et al., 2014; Ross et al., 2014; Saedi Germi et al., 2020; Seyssens et al., 2020; Spinato et al., 2012; Tarnow et al., 2014; Valentini et al., 2010; Van Nimwegen et al., 2016; Vidigal Jr. et al., 2017; Yang et al., 2019). Five studies used 20–25Ncm as the minimum insertion torque threshold for immediate loading (Crespi et al., 2008; Degidi et al., 2013, 2014; Norton, 2011; Raes, Eghbali, et al., 2018). One study assessed Type 1A with a relatively low insertion torque of less than 25 Ncm (Bittner et al., 2020). Three studies reported a relatively high minimum insertion torque at or above 45 Ncm (Cardaropoli et al., 2015; Grandi et al., 2013; Zuiderveld et al., 2018). Resonance frequency analysis (RFA) for determination of primary stability and suitability for loading

was reported in 10 studies (Aguilar-Salvatierra et al., 2016; Block et al., 2009; Bruno et al., 2014; Calvo-Guirado et al., 2009, 2015; Crespi et al., 2008; Degidi et al., 2013, 2014; Di Alberti et al., 2012; Ma et al., 2019), with minimum thresholds ranging from 60 to 71 ISQ (implant stability quotient).

### 3.5.12 | Occlusion

Occlusal criteria for immediate loading was reported in 57 studies, with 47 studies reporting no occlusal contacts on immediately loaded restorations (Arora & Ivanovski, 2018a, 2018b; Bittner et al., 2020; Block et al., 2009; Bonnet et al., 2018; Bushahri et al., 2021; Cabello et al., 2013; Canullo et al., 2010; Canullo, Goglia, et al., 2009; Canullo & Rasperini, 2007; Cardaropoli et al., 2015, 2019; Cooper et al., 2014; Cosyn et al., 2011, 2016; Degidi et al., 2013, 2014; Ferrara et al., 2006; Ganeles et al., 2017; Grandi et al., 2013; Grandi, Garuti, Samarani, et al., 2012; Groisman et al., 2003; Hartlev et al., 2013; Khzam et al., 2014; Kolerman, Nissan, Rahmanov, et al., 2016; Ma et al., 2019; Malchiodi et al., 2013; Migliorati et al., 2015; Mijiritsky et al., 2021; Noelken et al., 2011; Noelken, Moergel, Pausch, et al., 2018; Norton, 2011; Paul & Held, 2013; Pieri et al., 2011; Raes et al., 2017; Raes, Eghbali, et al., 2018; Ribeiro et al., 2008; Ross et al., 2014; Seyssens et al., 2020; Shanelec, 2005; Spinato et al., 2012; Tarnow et al., 2014; Tortamano et al., 2010; Valentini et al., 2010; Van Nimwegen et al., 2016; Vidigal Jr. et al., 2017; Yang et al., 2019; Zuiderveld et al., 2018). Limited occlusal contacts were reported in nine studies (Aguilar-Salvatierra et al., 2016; Berberi, Noujeim, et al., 2014; Berberi, Sabbagh, et al., 2014; Bruno et al., 2014; Calvo-Guirado et al., 2015; Crespi et al., 2008; Cristalli et al., 2015; Mangano et al., 2012, 2013), with only one study (Di Alberti et al., 2012) reporting that the immediate restorations were in full occlusal contact.

### 3.6 | Intention-to-treat analysis

Only 23 studies reported whether all included patients were able to complete the prospectively assigned treatment protocol, or whether treatment protocols had to be varied due to intra-operative criteria not being met (Bittner et al., 2020; Block et al., 2009; Bushahri et al., 2021; Canullo et al., 2010; Canullo, Goglia, et al., 2009; Cardaropoli et al., 2015, 2019; Cooper et al., 2014; Cosyn et al., 2011, 2016; Crespi et al., 2008; Cristalli et al., 2015; Degidi et al., 2014; Ferrara et al., 2006; Grandi et al., 2013; Ma et al., 2019; McAllister et al., 2012; Migliorati et al., 2015; Noelken et al., 2011; Pieri et al., 2011; Slagter et al., 2021; Tortamano et al., 2010; Zuiderveld et al., 2018). The most common reasons for not completing the planned Type 1A protocol were fracture of the facial bone during extraction and lack of desired insertion torque during immediate implant placement. The successful completion of the intention to treat with a Type 1A protocol ranged from 85% to 100%. The intention-to-treat analysis is hampered by the heterogeneity in the timepoint

in which studies consider a patient/site to be included as a prospective participant of a Type 1A protocol.

## 4 | DISCUSSION

### 4.1 | Quality of included studies and validity of methods

This report summarizes the results and comparisons regarding reported survival rates from 68 included papers. Of the 68 studies, 11 RCTs were included for review. This systematic review aimed to assess the impact-specific patient and site characteristics reported for a single intervention, Type 1A immediate implant placement, and immediate loading of single implants in the maxillary esthetic zone. When assessing the impact of patient characteristics, an RCT study design is not directly applicable with only the treatment groups which were of Type 1A treatment protocol included in this analysis and carry the same weight as a prospective cohort study. The inclusion of study designs other than RCTs is appropriate within the design of this systematic review and provides clinically relevant data for descriptive reporting. The authors acknowledge that with the inclusion of lower-quality case series and retrospective studies, there is an inherent risk of bias; however, even these studies report using strict patient and site selection criteria.

Statistical assessment of survival rates from studies with different time horizons without detailed information on failures and drop-outs and with missing data is not an easy task as there are multiple pitfalls. Performing a meta-analysis on raw survival rates without any correction for study duration would yield an easily interpretable, but highly problematic outcome as studies lasting 10 years would be put on the same level as studies lasting 1 year (same study size). On the other hand, performing a meta-analysis with study duration correction as presented in this paper—it has its origins in epidemiology—the corrected outcomes ensure a fair comparison, but may feel strange as they are not in the usually reported spheres. In an iterative procedure, the authors thus agreed to additionally assess data in a simpler way in form of univariate (multivariate was not possible due to the small database) group-wise mean comparisons with cautious interpretation and to present these results in the first place along with the results from the time-corrected meta-analysis as complementary analysis.

As the distribution of the survival rates was skewed, non-normal, and with a lot of identical values (many having 100%), *p*-values for comparisons of both survival rates and average study duration were calculated with the help of bias-corrected bootstrap tests and presented with bias-corrected bootstrap confidence intervals. Bootstrap tests are tests that are based on resampling and are superior to common mean tests as they have a bias correction and do not follow parametric distributions. However, as it is common for nonparametric/semi-parametric methods, bootstrap tests lack statistical power compared to parametric alternatives, and also, study heterogeneity is not specifically modeled. Due to missing

combinations, a multivariate analysis was not possible so further confounding effects cannot be ruled out, as discussed further below.

Coming back to the here presented meta-analysis, the obtained heterogeneity measure  $I^2$  of 53% can be interpreted as “moderate” (Higgins & Thompson, 2002) and is particularly low for a meta-analysis of this size. Eliminating the four most influential studies leads to an even lower  $I^2$  of 34%.

Another limitation of this design and results, which may be an indicator for the lack of statistically significant differences, is that although the criteria reported have different thresholds, which formed the basis of our analysis, many patients in the study may be quite far beyond the threshold values, that is, the study may report a minimum threshold of 25 Ncm insertion torque, however, one site may have been at 25 Ncm, with the remaining sites all above 40 Ncm and this would not be reported. The search strategy used in this study limited the results to publications in English only which may exclude some relevant data.

## 4.2 | Implant survival with type 1A treatment protocols

The estimated weighed mean overall survival rate for Type 1A protocols for single implants in the maxillary esthetic zone is 97.7%, which is consistent with other systematic reviews (Atieh et al., 2009; Chen & Buser, 2014; Cosyn et al., 2019; Gallucci et al., 2018; Garcia-Sanchez et al., 2022; Pommer et al., 2021; Slagter et al., 2014; Zhou et al., 2021).

The short-term mean follow-up time of all included studies at 32 months or 2.7 years (2.3; 3.1) should be considered when assessing the survival outcomes of Type 1A protocols. The rate of failures is also not linear, with the majority of failures occurring during the initial healing period prior to osseointegration. This may be related to immediate loading protocols employed, and this is often attributed to the patients who experience early failures, however, similar rates of early implant failures are reported with unloaded implants as a result of surgical- and patient-related factors (Clauser et al., 2022).

Systematic reviews which only included longer studies with longer follow-up durations include very few studies and report comparable survival rates with Type 1A protocols (Pommer et al., 2021). As the vast majority of failures with Type 1A protocols reported within the study timeframes occurred early within the first 6 months, it could be questioned as to whether the treatment protocol will continue to have an outcome effect in the long term once osseointegration has been established (Schrott et al., 2014).

Univariate bootstrap tests show that studies before 2012 report a significantly lower survival rate. This is not surprising when looking at the proportions of studies reporting incidences. Before 2012, 9 of 17 or 52.9% report a loss, while since 2012, only 17 of 51 = 33.3% report a loss. A reason is surely that clinicians have grown in experience and the technology and clinical techniques have advanced, however, one should not forget the impact of publication bias, that is, studies that are not published due to “inadequate” results due to increasing commercial pressures.

## 4.3 | Reported patient and site selection criteria for type 1A treatment protocols

All the included studies utilizing a Type 1A treatment protocol report highly selective inclusion and exclusion criteria. The only site-specific criteria which were found to influence survival in this systematic review was the size of the facial gap, however, this is based on only 20 of the included 68 studies, and the presence of chronic endodontic infection. Sites that presented with a gap of over 2 mm between the socket facial bone wall and implant at the time of implant placement were associated with higher implant survival rates (99.0% vs. 95.9%,  $p = .04$ ). This finding may be related to the negative effects of facial implant positioning and using wider implant diameters that completely fill the socket. On the other hand, all studies reporting gaps  $\geq 2$  mm were published from 2012 and later so the higher survival rates here might also be related to advances in implant technology and more proficient surgery experience.

The significantly lower survival rate in studies that did not include patients with endodontic infections (96.2% vs. 98.9% for studies with patients with infections) is surprising and unexpected. Although the parameter may be slightly confounded with publication year and gap dimension as most studies including infection have a gap dimension  $\geq 2$  mm, there may be other, unknown associated factors that might affect implant survival. Current evidence indicates that placement of immediate dental implants into extraction sites with chronic peri-apical infections, provided appropriate clinical procedures are performed to debride the socket prior to implant placement (Chen et al., 2018; Chrcanovic et al., 2015; Fugazzotto, 2012; Waasdorp et al., 2010; Zuffetti et al., 2017).

Statistically significant differences were not found between survival rates for all the other reported patient and site characteristics. This can indicate that the site characteristics may not influence to a large degree the survival of implants. It also must be considered that survival is a relatively weak outcome measure and does not give an indication of clinically significant parameters such as esthetics, peri-implant tissue health, surrounding bone volume, alveolar ridge dimensions, and patient-reported outcome measures.

Few studies reported individual inclusion criteria which are considered higher risk for complications with Type 1A protocols.

Where higher-risk anatomical criteria were included, such as large defects of the facial bone wall and gingival recession, there was a tendency toward performing adjunct procedures such as connective tissue grafting, and/or raising full-thickness mucoperiosteal flaps to facilitate guided bone regeneration procedures.

## 4.4 | Intention-to-treat analysis (ITT) for type 1A treatment protocols

The intention-to-treat analysis is important for understanding how often can a chosen procedure be successfully completed in a given site/patient (Hollis & Campbell, 1999). As also reported in previous systematic reviews (Schrott et al., 2014), most studies did not include patients until the intervention has been successfully completed. As



such they do not report sites in which the intervention was aborted due to procedural complications or intra-operative assessments that deemed the site no longer suitable to continue with immediate implant placement or immediate loading. It is also not reported how many patients were screened as potential participants that did not meet the inclusion criteria and the reasons for exclusion.

Two studies reported a relatively high proportion of sites that did not meet the procedural criteria to continue with a Type 1A protocol. Cristalli et al., 2015 reported 4 of 28 sites having defects in the facial plates following extraction rendering an intention to treat of 86% (Cristalli et al., 2015). Ferrara et al., 2006 reported 6 of 39 implants that did not have sufficient primary stability to continue with immediate loading with an ITT of 85%, which may be related to the implant design utilized in the study (Ferrara et al., 2006).

#### 4.5 | Clinical significance

This article highlights the importance of strict patient and site selection for Type 1A implant protocols since the literature on compromised sites is lacking. The risk assessment table provides a framework for clinicians to identify when sites may be indicated for Type 1A protocols when low-risk factors are present. The assessment categories and thresholds are based on the current knowledge and understanding of the clinical and preclinical literature regarding implant survival, as well as esthetic and biological outcomes (Araújo et al., 2022; Buser et al., 2017; Chappuis et al., 2013; Levine et al., 2022). Several of the risk assessment criteria for Type 1A, such as thickness of facial bone, soft tissue phenotype, esthetic risk, gingival margin position, and presence of a facial gap, are specifically targeted at achieving optimal esthetics in recognition of the dimensional alveolar ridge changes that occur following tooth extraction that can lead to compromised esthetic outcomes (Chen & Buser, 2009, 2014; den Hartog et al., 2008; Morton et al., 2014; Yang et al., 2019), and are unlikely to be influential in survival outcomes.

The risk thresholds are slightly more conservative than those reported as minimum inclusion criteria in the literature in recognition that the studies may include only very few patients who were close to this threshold, and the mean values in these studies, which the success and survival are based on, may be considerably higher. The risk assessment table should be periodically reviewed, and thresholds updated as new literature becomes available.

#### 4.6 | Clinical recommendations

The studies included in this review on Type 1A immediate implant placement and loading protocols demonstrated high- to short-medium-term survival rates. The quantity and quality of evidence appear to be sufficient to justify these protocols as routine in sites and patients can be considered as low risk of complications. According to previously published validation criteria (Gallucci et al., 2009, 2018; Zhou et al., 2021), the literature included in the current systematic

review would support that Type 1A protocols in the anterior maxilla can be considered clinically and scientifically validated when strict selection criteria are followed. Since the reported studies all had strict patient- and site-specific selection criteria for Type 1A protocols, the patient population and sites that this literature is applicable to may be limited, and further studies are required to expand upon the indications for this protocol.

Survival rates were used in this systematic review as they are the most commonly reported outcome measure in the dental literature. However, clinical decision-making needs to encompass factors that can influence implant success including the potential for esthetic, biological, mechanical, and technical complications. Until literature is present to demonstrate acceptable implant esthetic and survival outcomes of Type 1A implant treatment in compromised sites, to obtain predictable results it would be recommended to follow strict patient and site selection.

Where sites are presenting with local anatomical characteristics which are considered moderate-risk factors, such as thin facial bone, thin soft tissue phenotype, and minor gingival recession, adjunctive treatments such as connective tissue grafting (CTG) tend to be used, which suggests that they may be required to provide successful esthetic outcomes. Several systematic reviews have specifically assessed the influence of CTG on esthetic parameters reporting an improvement in soft tissue profile and less mucosal recession where CTG is used in conjunction with Type 1A protocols (Atieh & Alsabeeha, 2020; Seyssens et al., 2021).

Due to the lack of published studies, where patients and sites are identified as having high-risk factors, Type 1A protocols cannot be recommended for routine use.

Type 1A protocols are technically challenging and this may influence the ability to achieve the necessary procedural criteria to successfully complete the planned intervention. The experience of the clinician should be taken into consideration when electing to undertake a Type 1A protocol, and should only be performed by experienced clinicians, particularly if sites present with any moderate-risk factors.

In this systematic review, 51 of the 68 included studies included reported grafting the gap between the implant and the facial bone wall when it was greater than 1 mm. The presence of a facial gap larger than 2 mm was univariately associated with increased survival rate and greater facial bone thickness when filled with bone substitutes, which is consistent with other literature (Atieh et al., 2009; Levine et al., 2022). Although regeneration of bone can occur without the placement of biomaterials into the gap, grafting is recommended to minimize the postextraction dimensional alveolar ridge changes (Araújo et al., 2022).

## 5 | CONCLUSION

Within the limitation of the present systematic review and range of studies included, Type 1A immediate implant placement and immediate loading for single implants in the maxillary esthetic zone has a

high survival rate. All the included studies demonstrated strict inclusion and exclusion criteria which highlights the importance of appropriate patient and site selection. A risk assessment tool is proposed based on the reported inclusion criteria, which can assist clinicians in identifying suitable sites indicated for Type 1A implant placement and loading protocols. Due to the limitations in using survival analysis for clinical decision-making, further research is required to assess esthetic and functional success with Type 1A protocols.

#### AUTHOR CONTRIBUTIONS

AH, LG, KA, JW, DM, WM, GG, and DW conceived the ideas and developed the methodology; LG and KA performed title and abstract screening; AH assisted in the screening as the third reviewer; AH, LG, and KA performed the full-text screening and data extraction; LM performed the statistical analysis; AH, LG, KA, JW, DM, WM, GG, and DW reviewed the statistical analysis; AH, LG, and KA lead the writing; AH, LG, KA, JW, LM, DM, WM, GG, and DW revised the manuscript critically for important intellectual content; and AH gave the final approval of the version to be submitted.

#### ACKNOWLEDGEMENTS

Open access publishing facilitated by The University of Western Australia, as part of the Wiley - The University of Western Australia agreement via the Council of Australian University Librarians.

#### CONFLICT OF INTEREST STATEMENT

The authors report no conflicts of interest related to this research.

#### DATA AVAILABILITY STATEMENT

Data sharing is not applicable to this article as no new data were created or analyzed in this study.

#### ORCID

Adam Hamilton  <https://orcid.org/0000-0003-1523-1904>

Lukas Martig  <https://orcid.org/0000-0002-6199-5158>

Dean Morton  <https://orcid.org/0000-0003-1297-5094>

German O. Gallucci  <https://orcid.org/0000-0001-6386-594X>

#### REFERENCES

- Aguilar-Salvatierra, A., Calvo-Guirado, J. L., González-Jaranay, M., Moreu, G., Delgado-Ruiz, R. A., & Gómez-Moreno, G. (2016). Peri-implant evaluation of immediately loaded implants placed in esthetic zone in patients with diabetes mellitus type 2: A two-year study. *Clinical Oral Implants Research*, 27(2), 156–161. <https://doi.org/10.1111/clr.12552>
- Aguirre-Zorzano, L.-A., Rodríguez-Andrés, C., Estefanía-Fresco, R., & Fernández-Jiménez, A. (2011). Immediate temporary restoration of single-tooth implants: Prospective clinical study. *Medicina Oral, Patología Oral y Cirugía Bucal*, 16(6), e794–e799.
- Albrektsson, T., Branemark, P. I., Hansson, H. A., & Lindstrom, J. (1981). Osseointegrated titanium implants. Requirements for ensuring a long-lasting, direct bone-to-implant anchorage in man. *Acta Orthopaedica Scandinavica*, 52(2), 155–170.
- Amato, F., Amato, G., Polara, G., & Spedicato, G. A. (2020). Guided tissue preservation: Clinical application of a new provisional restoration design to preserve soft tissue contours for single-tooth immediate implant restorations in the Esthetic area. *The International Journal of Periodontics & Restorative Dentistry*, 40(6), 869–879. <https://doi.org/10.11607/prd.4692>
- Amato, F., Polara, G., & Spedicato, G. A. (2018). Tissue dimensional changes in single-tooth immediate extraction implant placement in the Esthetic zone: A retrospective clinical study. *The International Journal of Oral & Maxillofacial Implants*, 33(2), 439–447. <https://doi.org/10.11607/jomi.6146>
- Anitua, E., Orive, G., Aguirre, J. J., & Andía, I. (2008). Clinical outcome of immediately loaded dental implants bioactivated with plasma rich in growth factors: A 5-year retrospective study. *Journal of Periodontology*, 79(7), 1168–1176. <https://doi.org/10.1902/jop.2008.070580>
- Anitua, E., Piñas, L., & Alkhraisat, M. H. (2016). Long-term outcomes of immediate implant placement into infected sockets in association with immediate loading: A retrospective cohort study. *Journal of Periodontology*, 87(10), 1135–1140. <https://doi.org/10.1902/jop.2016.160104>
- Araújo, M. G., Hürzeler, M. B., Dias, D. R., & Matarazzo, F. (2022). Minimal invasiveness in the alveolar ridge preservation, with or without concomitant implant placement. *Periodontology 2000*, 9, 65–88. <https://doi.org/10.1111/prd.12441>
- Arora, H., & Ivanovski, S. (2018a). Clinical and aesthetic outcomes of immediately placed single-tooth implants with immediate vs. delayed restoration in the anterior maxilla: A retrospective cohort study. *Clinical Oral Implants Research*, 29(3), 346–352. <https://doi.org/10.1111/clr.13125>
- Arora, H., & Ivanovski, S. (2018b). Evaluation of the influence of implant placement timing on the esthetic outcomes of single tooth implant treatment in the anterior maxilla: A retrospective study. *Journal of Esthetic and Restorative Dentistry*, 30(4), 338–345. <https://doi.org/10.1111/jerd.12385>
- Aslroosta, H., Akbari, S., Naddafpour, N., Adnaninia, S. T., Khorsand, A., & Namadmalian Esfahani, N. (2021). Effect of microthread design on the preservation of marginal bone around immediately placed implants: A 5-years prospective cohort study. *BMC Oral Health*, 21(1), 541. <https://doi.org/10.1186/s12903-021-01881-w>
- Atieh, M. A., & Alsabeeha, N. H. M. (2020). Soft tissue changes after connective tissue grafts around immediately placed and restored dental implants in the esthetic zone: A systematic review and meta-analysis. *Journal of Esthetic and Restorative Dentistry*, 32(3), 280–290. <https://doi.org/10.1111/jerd.12538>
- Atieh, M. A., Payne, A. G., Duncan, W. J., & Cullinan, M. P. (2009). Immediate restoration/loading of immediately placed single implants: Is it an effective bimodal approach? *Clinical Oral Implants Research*, 20(7), 645–659. <https://doi.org/10.1111/j.1600-0501.2009.01725.x>
- Avvanzo, P., Ciavarella, D., Avvanzo, A., Giannone, N., Carella, M., & Lo Muzio, L. (2009). Immediate placement and temporization of implants: Three- to five-year retrospective results. *The Journal of Oral Implantology*, 35(3), 136–142. <https://doi.org/10.1563/1548-1336-35.3.136>
- Barone, A., Marconcini, S., Giannarinari, E., Mijiritsky, E., Gelpi, F., & Covani, U. (2016). Clinical outcomes of implants placed in extraction sockets and immediately restored: A 7-year single-cohort prospective study. *Clinical Implant Dentistry and Related Research*, 18(6), 1103–1112. <https://doi.org/10.1111/cid.12393>
- Barone, A., Rispoli, L., Voza, I., Quaranta, A., & Covani, U. (2006). Immediate restoration of single implants placed immediately after tooth extraction. *Journal of Periodontology*, 77(11), 1914–1920. <https://doi.org/10.1902/jop.2006.060072>
- Barone, A., Toti, P., Quaranta, A., Derchi, G., & Covani, U. (2015). The clinical outcomes of immediate versus delayed restoration procedures on immediate implants: A comparative cohort study for single-tooth replacement. *Clinical Implant Dentistry and Related Research*, 17(6), 1114–1126. <https://doi.org/10.1111/cid.12225>

- Bavetta, G., Bavetta, G., Randazzo, V., Cavataio, A., Paderni, C., Grassia, V., Dipalma, G., Gargiulo Isacco, C., Scarano, A., De Vito, D., Cantore, S., Ballini, A., & Inchingolo, F. (2019). A retrospective study on insertion torque and implant stability quotient (ISQ) as stability parameters for immediate loading of implants in fresh extraction sockets. *BioMed Research International*, 2019, 9720419. <https://doi.org/10.1155/2019/9720419>
- Becker, C. M., Wilson, T. G., Jr., & Jensen, O. T. (2011). Minimum criteria for immediate provisionalization of single-tooth dental implants in extraction sites: A 1-year retrospective study of 100 consecutive cases. *Journal of Oral and Maxillofacial Surgery*, 69(2), 491–497. <https://doi.org/10.1016/j.joms.2010.10.024>
- Bell, C., & Bell, R. E. (2014). Immediate restoration of NobelActive implants placed into fresh extraction sites in the anterior maxilla. *The Journal of Oral Implantology*, 40(4), 455–458. <https://doi.org/10.1563/AAID-JOI-D-11-00254>
- Benic, G. I., Mokti, M., Chen, C.-J., Weber, H.-P., Hämmerle, C. H. F., & Gallucci, G. O. (2012). Dimensions of buccal bone and mucosa at immediately placed implants after 7 years: A clinical and cone beam computed tomography study. *Clinical Oral Implants Research*, 23(5), 560–566. <https://doi.org/10.1111/j.1600-0501.2011.02253.x>
- Berberi, A. N. (2021). Comparison of bone levels around immediately loaded single implants placed in healed or freshly extracted sites in the Esthetic anterior maxilla: A 10-year prospective study. *The International Journal of Oral & Maxillofacial Implants*, 36(5), 1016–1023. <https://doi.org/10.11607/jomi.8772>
- Berberi, A. N., Noujeim, Z. N., Kanj, W. H., Mearawi, R. J., & Salameh, Z. A. (2014). Immediate placement and loading of maxillary single-tooth implants: A 3-year prospective study of marginal bone level. *The Journal of Contemporary Dental Practice*, 15(2), 202–208. <https://doi.org/10.5005/jp-journals-10024-1515>
- Berberi, A. N., Sabbagh, J. M., Aboushelib, M. N., Noujeim, Z. F., & Salameh, Z. A. (2014). A 5-year comparison of marginal bone level following immediate loading of single-tooth implants placed in healed alveolar ridges and extraction sockets in the maxilla. *Frontiers in Physiology*, 5, 29. <https://doi.org/10.3389/fphys.2014.00029>
- Berberi, A. N., Tehini, G. E., Noujeim, Z. F., Khairallah, A. A., Abousehlib, M. N., & Salameh, Z. A. (2014). Influence of surgical and prosthetic techniques on marginal bone loss around titanium implants. Part I: Immediate loading in fresh extraction sockets. *Journal of Prosthodontics*, 23(7), 521–527. <https://doi.org/10.1111/jopr.12153>
- Bianchi, A. E., & Sanfilippo, F. (2004). Single-tooth replacement by immediate implant and connective tissue graft: A 1-9-year clinical evaluation. *Clinical Oral Implants Research*, 15(3), 269–277. <https://doi.org/10.1111/j.1600-0501.2004.01020.x>
- Bilhan, H., Mumcu, E., Geçkilil, O., & Atalay, B. (2011). The evaluation of the success of immediately placed single implants: A retrospective clinical study. *Implant Dentistry*, 20(3), 215–225. <https://doi.org/10.1097/ID.0b013e3182181ee6>
- Bittner, N., Planzos, L., Volchonok, A., Tarnow, D., & Schulze-Späte, U. (2020). Evaluation of horizontal and vertical buccal ridge dimensional changes after immediate implant placement and immediate temporization with and without bone augmentation procedures: Short-term, 1-year results. A randomized controlled clinical trial. *The International Journal of Periodontics & Restorative Dentistry*, 40(1), 83–93. <https://doi.org/10.11607/prd.4152>
- Block, M., Finger, I., Castellon, P., & Lirettle, D. (2004). Single tooth immediate provisional restoration of dental implants: Technique and early results. *Journal of Oral and Maxillofacial Surgery*, 62(9), 1131–1138. <https://doi.org/10.1016/j.joms.2004.05.115>
- Block, M. S., Mercante, D. E., Lirette, D., Mohamed, W., Ryser, M., & Castellon, P. (2009). Prospective evaluation of immediate and delayed provisional single tooth restorations. *Journal of Oral and Maxillofacial Surgery*, 67(11 Suppl), 89–107. <https://doi.org/10.1016/j.joms.2009.07.009>
- Blus, C., & Szmukler-Moncler, S. (2010). Atraumatic tooth extraction and immediate implant placement with Piezosurgery: Evaluation of 40 sites after at least 1 year of loading. *The International Journal of Periodontics & Restorative Dentistry*, 30(4), 355–363.
- Boardman, N., Darby, I., & Chen, S. (2016). A retrospective evaluation of aesthetic outcomes for single-tooth implants in the anterior maxilla. *Clinical Oral Implants Research*, 27(4), 443–451. <https://doi.org/10.1111/clr.12593>
- Boedeker, D., Dyer, J., & Kraut, R. (2011). Clinical outcome of immediately loaded maxillary implants: A 2-year retrospective study. *Journal of Oral and Maxillofacial Surgery*, 69(5), 1335–1343. <https://doi.org/10.1016/j.joms.2010.11.016>
- Bonnet, F., Karouni, M., & Antoun, H. (2018). Esthetic evaluation of periimplant soft tissue of immediate single-implant placement and provisionalization in the anterior maxilla. *International Journal of Esthetic Dentistry*, 13(3), 378–392.
- Brignardello-Petersen, R. (2017). Immediately placed and restored single-tooth implants in the anterior maxilla shown to have good esthetic outcomes 1 year after treatment. *Journal of the American Dental Association* (1939), 148(7), e103. <https://doi.org/10.1016/j.adaj.2017.05.008>
- Brown, S. D. K., & Payne, A. G. T. (2011). Immediately restored single implants in the aesthetic zone of the maxilla using a novel design: 1-year report. *Clinical Oral Implants Research*, 22(4), 445–454. <https://doi.org/10.1111/j.1600-0501.2010.02125.x>
- Bruno, V., O'Sullivan, D., Badino, M., & Catapano, S. (2014). Preserving soft tissue after placing implants in fresh extraction sockets in the maxillary esthetic zone and a prosthetic template for interim crown fabrication: A prospective study. *The Journal of Prosthetic Dentistry*, 111(3), 195–202. <https://doi.org/10.1016/j.prosdent.2013.09.008>
- Buser, D., Chappuis, V., Belsler, U. C., & Chen, S. (2017). Implant placement post extraction in esthetic single tooth sites: When immediate, when early, when late? *Periodontology* 2000, 73(1), 84–102. <https://doi.org/10.1111/prd.12170>
- Bushahri, A., Kripfgans, O. D., George, F., Wang, I. C., Wang, H.-L., & Chan, H.-L. (2021). Facial mucosal level of single immediately placed implants with either immediate provisionalization or delayed restoration: An intermediate-term study. *Journal of Periodontology*, 92(9), 1213–1221. <https://doi.org/10.1002/JPER.20-0746>
- Cabello, G., Rioboo, M., & Fábrega, J. G. (2013). Immediate placement and restoration of implants in the aesthetic zone with a trimodal approach: Soft tissue alterations and its relation to gingival biotype. *Clinical Oral Implants Research*, 24(10), 1094–1100. <https://doi.org/10.1111/j.1600-0501.2012.02516.x>
- Calvo Guirado, J. L., Saez Yuguero, M. R., Pardo Zamora, G., & Muñoz Barrio, E. (2007). Immediate provisionalization on a new implant design for esthetic restoration and preserving crestal bone. *Implant Dentistry*, 16(2), 155–164. <https://doi.org/10.1097/ID.0b013e31805816c9>
- Calvo-Guirado, J. L., Gómez-Moreno, G., Aguilar-Salvatierra, A., Guardia, J., Delgado-Ruiz, R. A., & Romanos, G. E. (2015). Marginal bone loss evaluation around immediate non-occlusal microthreaded implants placed in fresh extraction sockets in the maxilla: A 3-year study. *Clinical Oral Implants Research*, 26(7), 761–767. <https://doi.org/10.1111/clr.12336>
- Calvo-Guirado, J. L., Ortiz-Ruiz, A. J., López-Marí, L., Delgado-Ruiz, R., Maté-Sánchez, J., & Bravo Gonzalez, L. A. (2009). Immediate maxillary restoration of single-tooth implants using platform switching for crestal bone preservation: A 12-month study. *The International Journal of Oral & Maxillofacial Implants*, 24(2), 275–281.
- Cannizzaro, G., Felice, P., Loi, I., Viola, P., Ferri, V., Leone, M., Lazzarini, M., Trullenque-Eriksson, A., & Esposito, M. (2016). Machined versus roughened immediately loaded and finally restored single implants inserted flapless: Preliminary 6-month data from a split-mouth randomised controlled trial. *Eur. The Journal of Oral Implantology*, 9(Suppl 1(2)), 155–163.

- Canullo, L., Bignozzi, I., Cocchetto, R., Cristalli, M. P., & Iannello, G. (2010). Immediate positioning of a definitive abutment versus repeated abutment replacements in post-extractive implants: 3-year follow-up of a randomised multicentre clinical trial. *European Journal of Oral Implantology*, 3(4), 285–296.
- Canullo, L., Goglia, G., Iurlaro, G., & Iannello, G. (2009). Short-term bone level observations associated with platform switching in immediately placed and restored single maxillary implants: A preliminary report. *The International Journal of Prosthodontics*, 22(3), 277–282.
- Canullo, L., Iurlaro, G., & Iannello, G. (2009). Double-blind randomized controlled trial study on post-extraction immediately restored implants using the switching platform concept: Soft tissue response. Preliminary report. *Clinical Oral Implants Research*, 20(4), 414–420. <https://doi.org/10.1111/j.1600-0501.2008.01660.x>
- Canullo, L., & Rasperini, G. (2007). Preservation of peri-implant soft and hard tissues using platform switching of implants placed in immediate extraction sockets: A proof-of-concept study with 12- to 36-month follow-up. *The International Journal of Oral & Maxillofacial Implants*, 22(6), 995–1000.
- Cardaropoli, D., Tamagnone, L., Roffredo, A., De Maria, A., & Gaviglio, L. (2019). Preservation of peri-implant hard tissues following immediate postextraction implant placement. Part I: Radiologic evaluation. *The International Journal of Periodontics & Restorative Dentistry*, 39(5), 633–641. <https://doi.org/10.11607/prd.4183>
- Cardaropoli, D., Tamagnone, L., Roffredo, A., & Gaviglio, L. (2015). Soft tissue contour changes at immediate postextraction single-tooth implants with immediate restoration: A 12-month prospective cohort study. *The International Journal of Periodontics & Restorative Dentistry*, 35(2), 191–198. <https://doi.org/10.11607/prd.2326>
- Carini, F., Longoni, S., Pisapia, V., Francesconi, M., Saggese, V., & Porcaro, G. (2014). Immediate loading of implants in the aesthetic zone: Comparison between two placement timings. *Annali di stomatologia*, 5(Suppl 2 to2), 15–26.
- Cecchinato, D., Lops, D., Salvi, G. E., & Sanz, M. (2015). A prospective, randomized, controlled study using OsseoSpeed™ implants placed in maxillary fresh extraction socket: Soft tissues response. *Clinical Oral Implants Research*, 26(1), 20–27. <https://doi.org/10.1111/clr.12295>
- Chan, H.-L., George, F., Wang, I. C., Suárez López Del Amo, F., Kinney, J., & Wang, H. L. (2019). A randomized controlled trial to compare aesthetic outcomes of immediately placed implants with and without immediate provisionalization. *Journal of Clinical Periodontology*, 46(10), 1061–1069. <https://doi.org/10.1111/jcpe.13171>
- Chappuis, V., Engel, O., Reyes, M., Shahim, K., Nolte, L. P., & Buser, D. (2013). Ridge alterations post-extraction in the esthetic zone: A 3D analysis with CBCT. *Journal of Dental Research*, 92(12 Suppl), 195s–201s. <https://doi.org/10.1177/0022034513506713>
- Chaushu, G., Chaushu, S., Tzohar, A., & Dayan, D. (2001). Immediate loading of single-tooth implants: Immediate versus non-immediate implantation. A clinical report. *The International Journal of Oral & Maxillofacial Implants*, 16(2), 267–272.
- Chen, H., Zhang, G., Weigl, P., & Gu, X. (2018). Immediate placement of dental implants into infected versus noninfected sites in the esthetic zone: A systematic review and meta-analysis. *The Journal of Prosthetic Dentistry*, 120(5), 658–667. <https://doi.org/10.1016/j.prosdent.2017.12.008>
- Chen, J., Cai, M., Yang, J., Aldhohrah, T., & Wang, Y. (2019). Immediate versus early or conventional loading dental implants with fixed prostheses: A systematic review and meta-analysis of randomized controlled clinical trials. *The Journal of Prosthetic Dentistry*, 122(6), 516–536. <https://doi.org/10.1016/j.prosdent.2019.05.013>
- Chen, S. T., & Buser, D. (2009). Clinical and esthetic outcomes of implants placed in postextraction sites. *The International Journal of Oral & Maxillofacial Implants*, 24, 186–217.
- Chen, S. T., & Buser, D. (2014). Esthetic outcomes following immediate and early implant placement in the anterior maxilla—a systematic review. *The International Journal of Oral & Maxillofacial Implants*, 29(Suppl), 186–215. <https://doi.org/10.11607/jomi.2014suppl.g3.3>
- Chen, S. T., Wilson, T. G., Jr., & Hämmerle, C. H. (2004). Immediate or early placement of implants following tooth extraction: Review of biologic basis, clinical procedures, and outcomes. *The International Journal of Oral & Maxillofacial Implants*, 19, 12–25.
- Chrcanovic, B. R., Martins, M. D., & Wennerberg, A. (2015). Immediate placement of implants into infected sites: A systematic review. *Clinical Implant Dentistry and Related Research*, 17(Suppl 1), e1–e16. <https://doi.org/10.1111/cid.12098>
- Chu, S. J., Saito, H., Östman, P.-O., Levin, B. P., Reynolds, M. A., & Tarnow, D. P. (2020). Immediate tooth replacement therapy in Postextraction sockets: A comparative prospective study on the effect of variable platform-switched Subcrestal angle correction implants. *The International Journal of Periodontics & Restorative Dentistry*, 40(4), 509–517. <https://doi.org/10.11607/prd.4440>
- Chu, S. J., Saito, H., Salama, M. A., Garber, D. A., Salama, H., Sarnachiaro, G. O., Reynolds, M. A., & Tarnow, D. P. (2018). Flapless postextraction socket implant placement, part 3: The effects of bone grafting and provisional restoration on soft tissue color change—A retrospective pilot study. *The International Journal of Periodontics & Restorative Dentistry*, 38(4), 509–516. <https://doi.org/10.11607/prd.3571>
- Chu, S. J., Salama, M. A., Garber, D. A., Salama, H., Sarnachiaro, G. O., Sarnachiaro, E., Gotta, S. L., Reynolds, M. A., Saito, H., & Tarnow, D. P. (2015). Flapless postextraction socket implant placement, part 2: The effects of bone grafting and provisional restoration on Peri-implant soft tissue height and thickness—A retrospective study. *The International Journal of Periodontics & Restorative Dentistry*, 35(6), 803–809. <https://doi.org/10.11607/prd.2178>
- Clauser, C., Sforza, N. M., Menini, I., Kalemaj, Z., Buti, J., & Collaborators of Accademia Toscana di Ricerca Odontostomatologica, I. P. I. G. (2020). Immediate postextraction single-tooth implants and provisional crowns in the Esthetic area: 2-year results of a cohort prospective multicenter study— patient-Centered outcomes. *The International Journal of Oral & Maxillofacial Implants*, 35(4), 833–840. <https://doi.org/10.11607/jomi.7203>
- Clauser, T., Lin, G. H., Lee, E., Del Fabbro, M., Wang, H. L., & Testori, T. (2022). Risk of early implant failure in grafted and non-grafted sites: A systematic review and meta-analysis. *International Journal of Oral Implantology*, 15(1), 31–41.
- Cochran, D. L., & Douglas, H. B. (1993). Augmentation of osseous tissue around nonsubmerged endosseous dental implants. *The International Journal of Periodontics & Restorative Dentistry*, 13(6), 506–519.
- Cooper, L. F., Raes, F., Reside, G. J., Garriga, J. S., Tarrida, L. G., Wiltfang, J., Kern, M., & de Bruyn, H. (2010). Comparison of radiographic and clinical outcomes following immediate provisionalization of single-tooth dental implants placed in healed alveolar ridges and extraction sockets. *The International Journal of Oral & Maxillofacial Implants*, 25(6), 1222–1232.
- Cooper, L. F., Reside, G. J., Raes, F., Garriga, J. S., Tarrida, L. G., Wiltfang, J., Kern, M., & De Bruyn, H. (2014). Immediate provisionalization of dental implants placed in healed alveolar ridges and extraction sockets: A 5-year prospective evaluation. *The International Journal of Oral & Maxillofacial Implants*, 29(3), 709–717. <https://doi.org/10.11607/jomi.3617>
- Cornelini, R., Barone, A., & Covani, U. (2008). Connective tissue grafts in postextraction implants with immediate restoration: A prospective controlled clinical study. *Practical Procedures & Aesthetic Dentistry*, 20(6), 337–343.
- Cornelini, R., Cangini, F., Covani, U., & Wilson, T. G., Jr. (2005). Immediate restoration of implants placed into fresh extraction sockets for single-tooth replacement: A prospective clinical study. *The International Journal of Periodontics & Restorative Dentistry*, 25(5), 439–447.

- Cosyn, J., De Bruyn, H., & Cleymaet, R. (2013). Soft tissue preservation and pink aesthetics around single immediate implant restorations: A 1-year prospective study. *Clinical Implant Dentistry and Related Research*, 15(6), 847–857. <https://doi.org/10.1111/j.1708-8208.2012.00448.x>
- Cosyn, J., Eghbali, A., De Bruyn, H., Collys, K., Cleymaet, R., & De Rouck, T. (2011). Immediate single-tooth implants in the anterior maxilla: 3-year results of a case series on hard and soft tissue response and aesthetics. *Journal of Clinical Periodontology*, 38(8), 746–753. <https://doi.org/10.1111/j.1600-051X.2011.01748.x>
- Cosyn, J., Eghbali, A., Hermans, A., Vervaeke, S., De Bruyn, H., & Cleymaet, R. (2016). A 5-year prospective study on single immediate implants in the aesthetic zone. *Journal of Clinical Periodontology*, 43(8), 702–709. <https://doi.org/10.1111/jcpe.12571>
- Cosyn, J. A.-O., De Lat, L., Seyssens, L., Doornewaard, R., Deschepper, E., & Vervaeke, S. A.-O. (2019). The effectiveness of immediate implant placement for single tooth replacement compared to delayed implant placement: A systematic review and meta-analysis. *Journal of Clinical Periodontology*, 46(Suppl 21), 224–241. <https://doi.org/10.1111/jcpe.13054>
- Covani, U., Chiappe, G., Bosco, M., Orlando, B., Quaranta, A., & Barone, A. (2012). A 10-year evaluation of implants placed in fresh extraction sockets: A prospective cohort study. *Journal of Periodontology*, 83(10), 1226–1234. <https://doi.org/10.1902/jop.2012.110583>
- Covani, U., Crespi, R., Cornellini, R., & Barone, A. (2004). Immediate implants supporting single crown restoration: A 4-year prospective study. *Journal of Periodontology*, 75(7), 982–988. <https://doi.org/10.1902/jop.2004.75.7.982>
- Crespi, R., Capparè, P., & Gherlone, E. (2009). Radiographic evaluation of marginal bone levels around platform-switched and non-platform-switched implants used in an immediate loading protocol. *The International Journal of Oral & Maxillofacial Implants*, 24(5), 920–926.
- Crespi, R., Capparè, P., & Gherlone, E. (2010a). A 4-year evaluation of the peri-implant parameters of immediately loaded implants placed in fresh extraction sockets. *Journal of Periodontology*, 81(11), 1629–1634. <https://doi.org/10.1902/jop.2010.100115>
- Crespi, R., Capparè, P., & Gherlone, E. (2010b). Immediate loading of dental implants placed in periodontally infected and non-infected sites: A 4-year follow-up clinical study. *Journal of Periodontology*, 81(8), 1140–1146. <https://doi.org/10.1902/jop.2010.090666>
- Crespi, R., Capparè, P., Gherlone, E., & Romanos, G. (2012). Immediate provisionalization of dental implants placed in fresh extraction sockets using a flapless technique. *The International Journal of Periodontics & Restorative Dentistry*, 32(1), 29–37.
- Crespi, R., Capparè, P., Gherlone, E., & Romanos, G. E. (2007). Immediate occlusal loading of implants placed in fresh sockets after tooth extraction. *The International Journal of Oral & Maxillofacial Implants*, 22(6), 955–962.
- Crespi, R., Capparè, P., Gherlone, E., & Romanos, G. E. (2008). Immediate versus delayed loading of dental implants placed in fresh extraction sockets in the maxillary esthetic zone: A clinical comparative study. *The International Journal of Oral & Maxillofacial Implants*, 23(4), 753–758.
- Crespi, R., Fabris, G. B. M., Crespi, G., Toti, P., Marconcini, S., & Covani, U. (2019). Effects of different loading protocols on the bone remodeling volume of immediate maxillary single implants: A 2- to 3-year follow-up. *The International Journal of Oral & Maxillofacial Implants*, 34(4), 953–962. <https://doi.org/10.11607/jomi.6972>
- Cristalli, M. P., Marini, R., La Monaca, G., Sepe, C., Tonoli, F., & Annibali, S. (2015). Immediate loading of post-extractive single-tooth implants: A 1-year prospective study. *Clinical Oral Implants Research*, 26(9), 1070–1079. <https://doi.org/10.1111/clr.12403>
- De Bruyn, H., Raes, F., Cooper, L. F., Reside, G., Garriga, J. S., Tarrida, L. G., Wiltfang, J., & Kern, M. (2013). Three-years clinical outcome of immediate provisionalization of single Osseospeed(™) implants in extraction sockets and healed ridges. *Clinical Oral Implants Research*, 24(2), 217–223. <https://doi.org/10.1111/j.1600-0501.2012.02449.x>
- de Carvalho, B. C. F., de Carvalho, E. M. O. F., & Consani, R. L. X. (2013). Flapless single-tooth immediate implant placement. *The International Journal of Oral & Maxillofacial Implants*, 28(3), 783–789. <https://doi.org/10.11607/jomi.2140>
- De Rouck, T., Collys, K., & Cosyn, J. (2008). Immediate single-tooth implants in the anterior maxilla: A 1-year case cohort study on hard and soft tissue response. *Journal of Clinical Periodontology*, 35(7), 649–657. <https://doi.org/10.1111/j.1600-051X.2008.01235.x>
- De Rouck, T., Collys, K., Wyn, I., & Cosyn, J. (2009). Instant provisionalization of immediate single-tooth implants is essential to optimize esthetic treatment outcome. *Clinical Oral Implants Research*, 20(6), 566–570. <https://doi.org/10.1111/j.1600-0501.2008.01674.x>
- Degidi, M., Daprile, G., Nardi, D., & Piattelli, A. (2013). Immediate provisionalization of implants placed in fresh extraction sockets using a definitive abutment: The chamber concept. *The International Journal of Periodontics & Restorative Dentistry*, 33(5), 559–565. <https://doi.org/10.11607/prd.1795>
- Degidi, M., Nardi, D., Daprile, G., & Piattelli, A. (2014). Nonremoval of immediate abutments in cases involving subcrestally placed postextractive tapered single implants: A randomized controlled clinical study. *Clinical Implant Dentistry and Related Research*, 16(6), 794–805. <https://doi.org/10.1111/cid.12051>
- Degidi, M., Nardi, D., & Piattelli, A. (2008). Peri-implant tissue and radiographic bone levels in the immediately restored single-tooth implant: A retrospective analysis. *Journal of Periodontology*, 79(2), 252–259. <https://doi.org/10.1902/jop.2008.070342>
- Degidi, M., & Piattelli, A. (2005). Comparative analysis study of 702 dental implants subjected to immediate functional loading and immediate nonfunctional loading to traditional healing periods with a follow-up of up to 24 months. *The International Journal of Oral & Maxillofacial Implants*, 20(1), 99–107.
- den Hartog, L., Huddleston, J. J. R., Slater, A. V., Meijer, H. J. A., & Raghoobar, G. M. (2008). Treatment outcome of immediate, early and conventional single-tooth implants in the aesthetic zone: A systematic review to survival, bone level, soft-tissue, aesthetics and patient satisfaction. *Journal of Clinical Periodontology*, 35(12), 1073–1086. <https://doi.org/10.1111/j.1600-051X.2008.01330.x>
- Di Alberti, L., Donnini, F., Di Alberti, C., Camerino, M., Sgaramella, N., & Lo Muzio, L. (2012). Clinical and radiologic evaluation of 70 immediately loaded single implants in the maxillary esthetic zone: Preliminary results after 1 year of functional loading. *The International Journal of Oral & Maxillofacial Implants*, 27(1), 181–186.
- Donos, N., Horvath, A., Calciolari, E., & Mardas, N. (2019). Immediate provisionalization of bone level implants with a hydrophilic surface. A five-year follow-up of a randomized controlled clinical trial. *Clinical Oral Implants Research*, 30(2), 139–149. <https://doi.org/10.1111/clr.13400>
- Drago, C. J., & Lazzara, R. J. (2004). Immediate provisional restoration of Osseotite implants: A clinical report of 18-month results. *The International Journal of Oral & Maxillofacial Implants*, 19(4), 534–541.
- Efron, B., & Tibshirani, R. J. (1994). *An introduction to the bootstrap*. Monographs on statistics and applied probability 57 (pp. 178–234). Chapman & Hall/CRC Press. <https://books.google.com.au/books?id=MWC1DwAAQBAJ>
- El-Chaar, E. S. (2011). Immediate placement and provisionalization of implant-supported, single-tooth restorations: A retrospective study. *The International Journal of Periodontics & Restorative Dentistry*, 31(4), 409–419.
- Ericsson, I., Nilson, H., Lindh, T., Nilner, K., & Randow, K. (2000). Immediate functional loading of Brånemark single tooth implants. An 18 months' clinical pilot follow-up study. *Clinical Oral Implants Research*, 11(1), 26–33. <https://doi.org/10.1034/j.1600-0501.2000.011001026.x>

- Esposito, M., Barausse, C., Pistilli, R., Jacotti, M., Grandi, G., Tuco, L., & Felice, P. (2015). Immediate loading of post-extractive versus delayed placed single implants in the anterior maxilla: Outcome of a pragmatic multicenter randomised controlled trial 1-year after loading. *European Journal of Oral Implantology*, 8(4), 347–358.
- Evans, C. D. J., & Chen, S. T. (2008). Esthetic outcomes of immediate implant placements. *Clinical Oral Implants Research*, 19(1), 73–80. <https://doi.org/10.1111/j.1600-0501.2007.01413.x>
- Felice, P., Pistilli, R., Barausse, C., Trullenque-Eriksson, A., & Esposito, M. (2015). Immediate non-occlusal loading of immediate post-extractive versus delayed placement of single implants in preserved sockets of the anterior maxilla: 1-year post-loading outcome of a randomised controlled trial. *European Journal of Oral Implantology*, 8(4), 361–372.
- Felice, P., Soardi, E., Piattelli, M., Pistilli, R., Jacotti, M., & Esposito, M. (2011). Immediate non-occlusal loading of immediate post-extractive versus delayed placement of single implants in preserved sockets of the anterior maxilla: 4-month post-loading results from a pragmatic multicentre randomised controlled trial. *European Journal of Oral Implantology*, 4(4), 329–344.
- Ferrantino, L., Camurati, A., Gambino, P., Marzolo, M., Trisciuglio, D., Santoro, G., Farina, V., Fontana, F., As'ad, F., & Simion, M. (2021). Aesthetic outcomes of non-functional immediately restored single post-extraction implants with and without connective tissue graft: A multicentre randomized controlled trial. *Clinical Oral Implants Research*, 32(6), 684–694. <https://doi.org/10.1111/clr.13733>
- Ferrara, A., Galli, C., Mauro, G., & Macaluso, G. M. (2006). Immediate provisional restoration of postextraction implants for maxillary single-tooth replacement. *The International Journal of Periodontics & Restorative Dentistry*, 26(4), 371–377.
- Fugazzotto, P. A. (2012). A retrospective analysis of implants immediately placed in sites with and without periapical pathology in sixty-four patients. *Journal of Periodontology*, 83(2), 182–186. <https://doi.org/10.1902/jop.2011.110016>
- Fürhauser, R., Mailath-Pokorny, G., Haas, R., Busenlechner, D., Watzek, G., & Pommer, B. (2017). Immediate restoration of immediate implants in the Esthetic zone of the maxilla via the copy-abutment technique: 5-year follow-up of pink Esthetic scores. *Clinical Implant Dentistry and Related Research*, 19(1), 28–37. <https://doi.org/10.1111/cid.12423>
- Galli, F., Capelli, M., Zuffetti, F., Testori, T., & Esposito, M. (2008). Immediate non-occlusal vs. early loading of dental implants in partially edentulous patients: A multicentre randomized clinical trial. Peri-implantbone and soft-tissue levels. *Clinical Oral Implants Research*, 19(6), 546–552. <https://doi.org/10.1111/j.1600-0501.2008.01530.x>
- Gallucci, G., Morton, D., & Weber, H. (2009). Loading protocols for dental implants in edentulous patients. *The International Journal of Oral & Maxillofacial Implants*, 24, 132–146.
- Gallucci, G. O., Hamilton, A., Zhou, W., Buser, D., & Chen, S. (2018). Implant placement and loading protocols in partially edentulous patients: A systematic review. *Clinical Oral Implants Research*, 29(Suppl 16), 106–134. <https://doi.org/10.1111/clr.13276>
- Ganeles, J., Norkin, F. J., & Zfz, S. (2017). Single-tooth implant restorations in fresh extraction sockets of the maxillary Esthetic zone: Two-year results of a prospective cohort study. *The International Journal of Periodontics & Restorative Dentistry*, 37(2), e154–e162. <https://doi.org/10.11607/prd.3096>
- Garcia-Sanchez, R., Dopico, J., Kalemaj, Z., Buti, J., Pardo Zamora, G., & Mardas, N. (2022). Comparison of clinical outcomes of immediate versus delayed placement of dental implants: A systematic review and meta-analysis. *Clinical Oral Implants Research*, 33(3), 231–277. <https://doi.org/10.1111/clr.13892>
- Garcia-Sanchez, R., Mardas, N., Buti, J., Ortiz Ruiz, A. J., & Pardo Zamora, G. (2021). Immediate implant placement in fresh alveolar sockets with a minimal split-thickness envelope flap: A randomised controlled clinical trial. *Clinical Oral Implants Research*, 32(9), 1115–1126. <https://doi.org/10.1111/clr.13806>
- Givens, E., Jr., Bencharit, S., Byrd, W. C., Phillips, C., Hosseini, B., & Tyndall, D. (2015). Immediate placement and provisionalization of implants into sites with periradicular infection with and without antibiotics: An exploratory study. *The Journal of Oral Implantology*, 41(3), 299–305. <https://doi.org/10.1563/AAID-JOI-D-13-00002>
- Glauser, R., Sennerby, L., Meredith, N., Rée, A., Lundgren, A., Gottlow, J., & Hämmerle, C. H. F. (2004). Resonance frequency analysis of implants subjected to immediate or early functional occlusal loading. Successful vs. failing implants. *Clinical Oral Implants Research*, 15(4), 428–434. <https://doi.org/10.1111/j.1600-0501.2004.01036.x>
- Glibert, M., De Bruyn, H., & Östman, P.-O. (2016). Six-year radiographic, clinical, and soft tissue outcomes of immediately loaded, straight-walled, platform-switched, titanium-alloy implants with Nanosurface topography. *The International Journal of Oral & Maxillofacial Implants*, 31(1), 167–171. <https://doi.org/10.11607/jomi.4162>
- Gotfredsen, K., Hosseini, M., Rimborg, S., & Özhayat, E. (2021). Patient's perception of timing concepts in implant dentistry: A systematic review. *Clinical Oral Implants Research*, 32(Suppl 21), 67–84. <https://doi.org/10.1111/clr.13861>
- Grandi, T., Garuti, G., Guazzi, P., Tarabini, L., & Forabosco, A. (2012). Survival and success rates of immediately and early loaded implants: 12-month results from a multicentric randomized clinical study. *The Journal of Oral Implantology*, 38(3), 239–249. <https://doi.org/10.1563/AAID-JOI-D-10-00149>
- Grandi, T., Garuti, G., Samarani, R., Guazzi, P., & Forabosco, A. (2012). Immediate loading of single post-extractive implants in the anterior maxilla: 12-month results from a multicenter clinical study. *The Journal of Oral Implantology*, 38 Spec No, 477–484. <https://doi.org/10.1563/AAID-JOI-D-11-00058>
- Grandi, T., Guazzi, P., Samarani, R., & Grandi, G. (2013). Immediate provisionalisation of single post-extractive implants versus implants placed in healed sites in the anterior maxilla: 1-year results from a multicentre controlled cohort study. *European Journal of Oral Implantology*, 6(3), 285–295.
- Grandi, T., Guazzi, P., Samarani, R., Maghaireh, H., & Grandi, G. (2014). One abutment-one time versus a provisional abutment in immediately loaded post-extractive single implants: A 1-year follow-up of a multicentre randomised controlled trial. *European Journal of Oral Implantology*, 7(2), 141–149.
- Grandi, T., Guazzi, P., Samarani, R., Tohme, H., Khoury, S., Sbricoli, L., Grandi, G., & Esposito, M. (2015). Immediate, early (3 weeks) and conventional loading (4 months) of single implants: Preliminary data at 1 year after loading from a pragmatic multicenter randomised controlled trial. *European Journal of Oral Implantology*, 8(2), 115–126.
- Groenendijk, E., Bronkhorst, E. M., & Meijer, G. J. (2021). Does the pre-operative buccal soft tissue level at teeth or gingival phenotype dictate the aesthetic outcome after flapless immediate implant placement and provisionalization? Analysis of a prospective clinical case series. *International Journal of Implant Dentistry*, 7(1), 84. <https://doi.org/10.1186/s40729-021-00366-3>
- Groenendijk, E., Staas, T. A., Bronkhorst, E., Raghoobar, G. M., & Meijer, G. J. (2020). Immediate implant placement and provisionalization: Aesthetic outcome 1 year after implant placement. A prospective clinical multicenter study. *Clinical Implant Dentistry and Related Research*, 22(2), 193–200. <https://doi.org/10.1111/cid.12883>
- Groenendijk, E., Staas, T. A., Graauwman, F. E. J., Bronkhorst, E., Verhamme, L., Maal, T., & Meijer, G. J. (2017). Immediate implant placement: The fate of the buccal crest. A retrospective cone beam computed tomography study. *International Journal of Oral and Maxillofacial Surgery*, 46(12), 1600–1606. <https://doi.org/10.1016/j.ijom.2017.06.026>
- Groisman, M., Frossard, W. M., Ferreira, H. M. B., de Menezes Filho, L. M., & Touati, B. (2003). Single-tooth implants in the maxillary

- incisor region with immediate provisionalization: 2-year prospective study. *Practical Procedures & Aesthetic Dentistry*, 15(2), 115–122. doi: 10.1016/j.ppa.2013.05.001
- Grunder, U., Polizzi, G., Goené, R., Hatano, N., Henry, P., Jackson, W. J., Kawamura, K., Köhler, S., Renouard, F., Rosenberg, R., Triplett, G., Werbit, M., & Lithner, B. (1999). A 3-year prospective multicenter follow-up report on the immediate and delayed-immediate placement of implants. *The International Journal of Oral & Maxillofacial Implants*, 14(2), 210–216.
- Guarnieri, R., Ceccherini, A., & Grande, M. (2015). Single-tooth replacement in the anterior maxilla by means of immediate implantation and early loading: Clinical and aesthetic results at 5 years. *Clinical Implant Dentistry and Related Research*, 17(2), 314–326. <https://doi.org/10.1111/cid.12111>
- Guarnieri, R., Testarelli, L., Zuffetti, F., Bertani, P., & Testori, T. (2020). Comparative results of single implants with and without laser-microgrooved collar placed and loaded with different protocols: A long-term (7 to 10 years) retrospective multicenter study. *The International Journal of Oral & Maxillofacial Implants*, 35(4), 841–849. <https://doi.org/10.11607/jomi.7605>
- Hall, J. A. G., Payne, A. G. T., Purton, D. G., & Torr, B. (2006). A randomized controlled clinical trial of conventional and immediately loaded tapered implants with screw-retained crowns. *The International Journal of Prosthodontics*, 19(1), 17–19.
- Hämmerle, C. H., Chen, S. T., & Wilson, T. G., Jr. (2004). Consensus statements and recommended clinical procedures regarding the placement of implants in extraction sockets. *The International Journal of Oral & Maxillofacial Implants*, 19, 26–28.
- Harrer, M., Cuijpers, P., Furukawa, T. A., & Ebert, D. D. (2021). *Doing meta-analysis with R: A hands-on guide* (Vol. 25, pp. 51–283). CRC Press. <https://books.google.com.au/books?id=baE3EAAAQBAJ>
- Hartlev, J., Kohberg, P., Ahlmann, S., Andersen, N. T., Schou, S., & Isidor, F. (2014). Patient satisfaction and esthetic outcome after immediate placement and provisionalization of single-tooth implants involving a definitive individual abutment. *Clinical Oral Implants Research*, 25(11), 1245–1250. <https://doi.org/10.1111/clr.12260>
- Hartlev, J., Kohberg, P., Ahlmann, S., Gotfredsen, E., Andersen, N. T., Isidor, F., & Schou, S. (2013). Immediate placement and provisionalization of single-tooth implants involving a definitive individual abutment: A clinical and radiographic retrospective study. *Clinical Oral Implants Research*, 24(6), 652–658. <https://doi.org/10.1111/j.1600-0501.2012.02442.x>
- Heinemann, F., Biffar, R., Schwahn, C., & Mundt, T. (2013). Bone level changes in dental implants with platform-switched design after immediate and delayed placement in the maxilla. *The International Journal of Periodontics & Restorative Dentistry*, 33(3), 365–372. <https://doi.org/10.11607/prd.1276>
- Higgins, J. P. T., Thomas, J., Chandler, J., Cumpston, M., Li, T., Page, M., & Welch, V. (Eds.). (2022). *Cochrane handbook for systematic reviews of interventions* (2nd ed.). John Wiley & Sons.
- Higgins, J. P., & Thompson, S. G. (2002). Quantifying heterogeneity in a meta-analysis. *Statistics in Medicine*, 21(11), 1539–1558. <https://doi.org/10.1002/sim.1186>
- Hinze, M., Janousch, R., Goldhahn, S., & Schlee, M. (2018). Volumetric alterations around single-tooth implants using the socket-shield technique: Preliminary results of a prospective case series. *International Journal of Esthetic Dentistry*, 13(2), 146–170.
- Hof, M., Pommer, B., Ambros, H., Jesch, P., Vogl, S., & Zechner, W. (2015). Does timing of implant placement affect implant therapy outcome in the aesthetic zone? A clinical, radiological, aesthetic, and patient-based evaluation. *Clinical Implant Dentistry and Related Research*, 17(6), 1188–1199. <https://doi.org/10.1111/cid.12212>
- Hollis, S., & Campbell, F. (1999). What is meant by intention to treat analysis? Survey of published randomised controlled trials. *BMJ*, 319(7211), 670–674. <https://doi.org/10.1136/bmj.319.7211.670>
- Horwitz, J., Zuabi, O., & Machtei, E. (2008). Radiographic changes around immediately restored dental implants in periodontally susceptible patients: 1-year results. *The International Journal of Oral & Maxillofacial Implants*, 23(3), 531–538.
- Hosseini, B., Byrd, W. C., Preisser, J. S., Khan, A., Duggan, D., & Bencharit, S. (2015). Effects of antibiotics on bone and soft-tissue healing following immediate single-tooth implant placement into sites with apical pathology. *The Journal of Oral Implantology*, 41(5), e202–e211. <https://doi.org/10.1563/aaid-joi-D-14-00075>
- Hruska, A., Borelli, P., Bordanaro, A. C., Marzaduri, E., & Hruska, K.-L. (2002). Immediate loading implants: A clinical report of 1301 implants. *The Journal of Oral Implantology*, 28(4), 200–209. [https://doi.org/10.1563/1548-1336\(2002\)028<0200:IIACR>2.3.CO;2](https://doi.org/10.1563/1548-1336(2002)028<0200:IIACR>2.3.CO;2)
- Hui, E., Chow, J., Li, D., Liu, J., Wat, P., & Law, H. (2001). Immediate provisional for single-tooth implant replacement with Brånemark system: Preliminary report. *Clinical Implant Dentistry and Related Research*, 3(2), 79–86. <https://doi.org/10.1111/j.1708-8208.2001.tb00235.x>
- Huynh-Ba, G., Oates, T. W., & Williams, M. A. H. (2018). Immediate loading vs. early/conventional loading of immediately placed implants in partially edentulous patients from the patients' perspective: A systematic review. *Clinical Oral Implants Research*, 29(Suppl 16), 255–269. <https://doi.org/10.1111/clr.13278>
- Jung, R. E., Zaugg, B., Philipp, A. O. H., Truninger, T. C., Siegenthaler, D. W., & Hämmerle, C. H. F. (2013). A prospective, controlled clinical trial evaluating the clinical radiological and aesthetic outcome after 5 years of immediately placed implants in sockets exhibiting periapical pathology. *Clinical Oral Implants Research*, 24(8), 839–846. <https://doi.org/10.1111/j.1600-0501.2012.02491.x>
- Jung, R. E., Zembic, A., Pjetursson, B. E., Zwahlen, M., & Thoma, D. S. (2012). Systematic review of the survival rate and the incidence of biological, technical, and aesthetic complications of single crowns on implants reported in longitudinal studies with a mean follow-up of 5 years. *Clinical Oral Implants Research*, 23, 2–21. <https://doi.org/10.1111/j.1600-0501.2012.02547.x>
- Juodzbaly, G., & Wang, H.-L. (2010). Socket morphology-based treatment for implant esthetics: A pilot study. *The International Journal of Oral & Maxillofacial Implants*, 25(5), 970–978.
- Kan, J. Y., & Rungcharassaeng, K. (2001). Site development for anterior single implant esthetics: The dentulous site. *Compendium of Continuing Education in Dentistry*, 22(3), 221–236.
- Kan, J. Y., Rungcharassaeng, K., Deflorian, M., Weinstein, T., Wang, H.-L., & Testori, T. (2018). Immediate implant placement and provisionalization of maxillary anterior single implants. *Periodontology 2000*, 77(Suppl. 1), 197–212. <https://doi.org/10.1111/prd.12212>
- Kan, J. Y. K., Rungcharassaeng, K., & Lozada, J. (2003). Immediate placement and provisionalization of maxillary anterior single implants: 1-year prospective study. *The International Journal of Oral & Maxillofacial Implants*, 18(1), 31–39.
- Kan, J. Y. K., Rungcharassaeng, K., Lozada, J. L., & Zimmerman, G. (2011). Facial gingival tissue stability following immediate placement and provisionalization of maxillary anterior single implants: A 2- to 8-year follow-up. *The International Journal of Oral & Maxillofacial Implants*, 26(1), 179–187.
- Khzam, N., Mattheos, N., Roberts, D., Bruce, W. L., & Ivanovski, S. (2014). Immediate placement and restoration of dental implants in the esthetic region: Clinical case series. *Journal of Esthetic and Restorative Dentistry*, 26(5), 332–344. <https://doi.org/10.1111/jerd.12083>
- Kim, T. H., Knezevic, A., Jorgensen, M., Rich, S., & Nowzari, H. (2015). Prospective, 1-year observational study of double-threaded tapered body dental implants with immediate loading. *The Journal of Prosthetic Dentistry*, 114(1), 46–51. <https://doi.org/10.1016/j.prosdent.2014.12.016>
- Knapp, G., & Hartung, J. (2003). Improved tests for a random effects meta-regression with a single covariate. *Statistics in Medicine*, 22(17), 2693–2710. <https://doi.org/10.1002/sim.1482>

- Kniha, K., Kniha, H., Möhlhenrich, S. C., Milz, S., Hölzle, F., & Modabber, A. (2017). Papilla and alveolar crest levels in immediate versus delayed single-tooth zirconia implants. *International Journal of Oral and Maxillofacial Surgery*, 46(8), 1039–1044. <https://doi.org/10.1016/j.ijom.2017.02.007>
- Koh, R. U., Oh, T.-J., Rudek, I., Neiva, G. F., Misch, C. E., Rothman, E. D., & Wang, H.-L. (2011). Hard and soft tissue changes after crestal and subcrestal immediate implant placement. *Journal of Periodontology*, 82(8), 1112–1120. <https://doi.org/10.1902/jop.2011.100541>
- Kolerman, R., Nissan, J., Mijiritsky, E., Hamoudi, N., Mangano, C., & Tal, H. (2016). Esthetic assessment of immediately restored implants combined with GBR and free connective tissue graft. *Clinical Oral Implants Research*, 27(11), 1414–1422. <https://doi.org/10.1111/clr.12755>
- Kolerman, R., Nissan, J., Rahmanov, A., Zenziper, E., Slutzkey, S., & Tal, H. (2016). Radiological and biological assessment of immediately restored anterior maxillary implants combined with GBR and free connective tissue graft. *Clinical Implant Dentistry and Related Research*, 18(6), 1142–1152. <https://doi.org/10.1111/cid.12417>
- Kolinski, M. L., Cherry, J. E., McAllister, B. S., Parrish, K. D., Pumphrey, D. W., & Schroering, R. L. (2014). Evaluation of a variable-thread tapered implant in extraction sites with immediate temporization: A 3-year multicenter clinical study. *Journal of Periodontology*, 85(3), 386–394. <https://doi.org/10.1902/jop.2013.120638>
- Kopp, S., Behrend, D., Kundt, G., Ottl, P., Frerich, B., & Warkentin, M. (2013). No influence of simultaneous bone-substitute application on the success of immediately loaded dental implants: A retrospective cohort study. *Biomedizinische Technik. Biomedical Engineering*, 58(3), 315–321. <https://doi.org/10.1515/bmt-2012-0111>
- Kotb, A., Elkerdawy, M., & Elfir, M. (2020). Esthetic outcome of computer-guided versus free-hand immediate implant placement in fresh extraction sockets in esthetic zone, a randomized clinical trial. *Indian Journal of Public Health Research & Development*, 11(12), 140–147. <https://doi.org/10.37506/ijphrd.v11i12.13230>
- Lambert, F., Hamilton, A., De Souza, A., & Martin, W. (2023). Pre-operative analysis and treatment planning. In D. Wismeijer, Bart, & N. Donos (Eds.), *ITI treatment guide 14: Immediate implant placement and restoration in partially edentulous patients* (Vol. 14). Quintessence.
- Lang, L. A., Turkyilmaz, I., Edgin, W. A., Verrett, R., & Garcia, L. T. (2014). Immediate restoration of single tapered implants with non occluding provisional crowns: A 5-year clinical prospective study. *Clinical Implant Dentistry and Related Research*, 16(2), 248–258. <https://doi.org/10.1111/j.1708-8208.2012.00475.x>
- Laviv, A., Levin, L., Usiel, Y., & Schwartz-Arad, D. (2010). Survival of immediately provisionalized dental implants: A case-control study with up to 5 years follow-up. *Clinical Implant Dentistry and Related Research*, 12(Suppl 1), e23–e27. <https://doi.org/10.1111/j.1708-8208.2008.00139.x>
- Lee, Y.-M., Kim, D.-Y., Kim, J. Y., Kim, S.-H., Koo, K.-T., Kim, T.-I., & Seol, Y.-J. (2012). Peri-implant soft tissue level secondary to a connective tissue graft in conjunction with immediate implant placement: A 2-year follow-up report of 11 consecutive cases. *The International Journal of Periodontics & Restorative Dentistry*, 32(2), 213–222.
- Levin, B. P. (2011). Immediate temporization of immediate implants in the esthetic zone: Evaluating survival and bone maintenance. *The Compendium of Continuing Education in Dentistry*, 32(4), 52–56.
- Levin, B. P., & Wilk, B. L. (2013). Immediate provisionalization of immediate implants in the esthetic zone: A prospective case series evaluating implant survival, esthetics, and bone maintenance. *The Compendium of Continuing Education in Dentistry*, 34(5), 352–361.
- Levine, R. A., Dias, D. R., Wang, P., & Araújo, M. G. (2022). Effect of the buccal gap width following immediate implant placement on the buccal bone wall: A retrospective cone-beam computed tomography analysis. *Clinical Implant Dentistry and Related Research*, 24(4), 403–413. <https://doi.org/10.1111/cid.13095>
- Levine, R. A., Ganeles, J., Gonzaga, L., Kan, J. K., Randel, H., Evans, C. D., & Chen, S. T. (2017). 10 keys for successful Esthetic-zone single immediate implants. *Compendium of Continuing Education in Dentistry*, 38(4), 248–260.
- Liberati, A., Altman, D. G., Tetzlaff, J., Mulrow, C., Gøtzsche, P. C., Ioannidis, J. P., Clarke, M., Devereaux, P. J., Kleijnen, J., & Moher, D. (2009). The PRISMA statement for reporting systematic reviews and meta-analyses of studies that evaluate health care interventions: Explanation and elaboration. *Journal of Clinical Epidemiology*, 62(10), 1–34. <https://doi.org/10.1016/j.jclinepi.2009.06.006>
- Lindeboom, J. A., Frenken, J. W., Dubois, L., Frank, M., Abbink, I., & Kroon, F. H. (2006). Immediate loading versus immediate provisionalization of maxillary single-tooth replacements: A prospective randomized study with BioComp implants. *Journal of Oral and Maxillofacial Surgery*, 64(6), 936–942. <https://doi.org/10.1016/j.joms.2006.02.015>
- Locante, W. M. (2001). The nonfunctional immediate provisional in immediate extraction sites: A technique to maximize esthetics. *Implant Dentistry*, 10(4), 254–258. <https://doi.org/10.1097/00008505-200110000-00008>
- Locante, W. M. (2004). Single-tooth replacements in the esthetic zone with an immediate function implant: A preliminary report. *The Journal of Oral Implantology*, 30(6), 369–375. <https://doi.org/10.1563/0710.1>
- Lombardo, G., Corrocher, G., Pighi, J., Mascellaro, A., Marincola, M., & Nocini, P. F. (2016). Esthetic outcomes of immediately loaded locking taper implants in the anterior maxilla: A case series study. *The Journal of Oral Implantology*, 42(3), 258–264. <https://doi.org/10.1563/aaid-joi-D-14-00282>
- Lorenzoni, M., Pertl, C., Zhang, K., Wimmer, G., & Wegscheider, W. A. (2003). Immediate loading of single-tooth implants in the anterior maxilla. Preliminary results after one year. *Clinical Oral Implants Research*, 14(2), 180–187. <https://doi.org/10.1034/j.1600-0501.2003.140207.x>
- Luongo, G., Lenzi, C., Raes, F., Eccellente, T., Ortolani, M., & Mangano, C. (2014). Immediate functional loading of single implants: A 1-year interim report of a 5-year prospective multicentre study. *European Journal of Oral Implantology*, 7(2), 187–199.
- Ma, S., Tawse-Smith, A., Brown, S. D. K., & Duncan, W. (2019). Immediately restored single implants in the aesthetic zone of the maxilla using a novel design: 5-year results from a prospective single-arm clinical trial. *Clinical Implant Dentistry and Related Research*, 21(2), 344–351. <https://doi.org/10.1111/cid.12733>
- Malchiodi, L., Balzani, L., Cucchi, A., Ghensi, P., & Nocini, P. F. (2016). Primary and secondary stability of implants in Postextraction and healed sites: A randomized controlled clinical trial. *The International Journal of Oral & Maxillofacial Implants*, 31(6), 1435–1443. <https://doi.org/10.11607/jomi.4710>
- Malchiodi, L., Corrocher, G., Cucchi, A., Ghensi, P., Bissolotti, G., & Nocini, P. F. (2010). Long-term results of immediately loaded fast bone regeneration-coated implants placed in fresh extraction sites in the upper jaw. *The Journal of Oral Implantology*, 36(4), 251–261. <https://doi.org/10.1563/AAID-JOI-D-09-00016>
- Malchiodi, L., Cucchi, A., Ghensi, P., & Nocini, P. F. (2013). Evaluation of the esthetic results of 64 nonfunctional immediately loaded postextraction implants in the maxilla: Correlation between interproximal alveolar crest and soft tissues at 3 years of follow-up. *Clinical Implant Dentistry and Related Research*, 15(1), 130–142. <https://doi.org/10.1111/j.1708-8208.2011.00424.x>
- Malchiodi, L., Ghensi, P., Cucchi, A., & Corrocher, G. (2011). A comparative retrospective study of immediately loaded implants in postextraction sites versus healed sites: Results after 6 to 7 years in the maxilla. *The International Journal of Oral & Maxillofacial Implants*, 26(2), 373–384.
- Maló, P., de Araújo Nobre, M., Lopes, A., Ferro, A., & Gravito, I. (2015). Single-tooth rehabilitations supported by dental implants used in an immediate-Provisionalization protocol: Report on long-term



- outcome with retrospective follow-up. *Clinical Implant Dentistry and Related Research*, 17(Suppl 2), e511–e519. <https://doi.org/10.1111/cid.12278>
- Maló, P., Friberg, B., Polizzi, G., Gualini, F., Vighagen, T., & Rangert, B. (2003). Immediate and early function of Brånemark system implants placed in the esthetic zone: A 1-year prospective clinical multicenter study. *Clinical Implant Dentistry and Related Research*, 5(Suppl 1), 37–46. <https://doi.org/10.1111/j.1708-8208.2003.tb00014.x>
- Mangano, F., Mangano, C., Ricci, M., Sammons, R. L., Shibli, J. A., & Piattelli, A. (2012). Single-tooth Morse taper connection implants placed in fresh extraction sockets of the anterior maxilla: An aesthetic evaluation. *Clinical Oral Implants Research*, 23(11), 1302–1307. <https://doi.org/10.1111/j.1600-0501.2011.02307.x>
- Mangano, F. G., Luongo, F., Picciocchi, G., Mortellaro, C., Park, K. B., & Mangano, C. (2016). Soft tissue stability around single implants inserted to replace maxillary lateral incisors: A 3D evaluation. *International Journal of Dentistry*, 2016, 9393219. <https://doi.org/10.1155/2016/9393219>
- Mangano, F. G., Mangano, C., Ricci, M., Sammons, R. L., Shibli, J. A., & Piattelli, A. (2013). Esthetic evaluation of single-tooth Morse taper connection implants placed in fresh extraction sockets or healed sites. *The Journal of Oral Implantology*, 39(2), 172–181. <https://doi.org/10.1563/AAID-JOI-D-11-00112>
- McAllister, B. S., Cherry, J. E., Kolinski, M. L., Parrish, K. D., Pumphrey, D. W., & Schroering, R. L. (2012). Two-year evaluation of a variable-thread tapered implant in extraction sites with immediate temporization: A multicenter clinical trial. *The International Journal of Oral & Maxillofacial Implants*, 27(3), 611–618.
- Meizi, E., Meir, M., & Laster, Z. (2014). New-design dental implants: A 1-year prospective clinical study of 344 consecutively placed implants comparing immediate loading versus delayed loading and flapless versus full-thickness flap. *The International Journal of Oral & Maxillofacial Implants*, 29(1), e14–e21. <https://doi.org/10.11607/jomi.te37>
- Meltzer, A. M. (2012). Immediate implant placement and restoration in infected sites. *The International Journal of Periodontics & Restorative Dentistry*, 32(5), e169–e173.
- Menchini-Fabris, G.-B., Covani, U., Crespi, G., Toti, P., Brevi, B., & Crespi, R. (2019). Customized vs conventional implant-supported immediate provisional crowns for fresh-socket implant: A medium-term cone beam computed tomography study. *The International Journal of Oral & Maxillofacial Implants*, 34(6), 1505–1511. <https://doi.org/10.11607/jomi.7199>
- Mertens, C., & Steveling, H. G. (2011). Early and immediate loading of titanium implants with fluoride-modified surfaces: Results of 5-year prospective study. *Clinical Oral Implants Research*, 22(12), 1354–1360. <https://doi.org/10.1111/j.1600-0501.2010.02123.x>
- Migliorati, M., Amorfino, L., Signori, A., Biavati, A. S., & Benedicenti, S. (2015). Clinical and aesthetic outcome with post-extractive implants with or without soft tissue augmentation: A 2-year randomized clinical trial. *Clinical Implant Dentistry and Related Research*, 17(5), 983–995. <https://doi.org/10.1111/cid.12194>
- Mijiritsky, E., Barone, A., Cinar, I. C., Nagy, K., & Shacham, M. (2021). 3D considerations and outcomes of immediate single implant insertion and Provisionalization at the maxillary Esthetic zone: A long-term retrospective follow-up study of up to 18 years. *Journal of Clinical Medicine*, 10(18), 4138. <https://doi.org/10.3390/jcm10184138>
- Mijiritsky, E., Mardinger, O., Mazor, Z., & Chaushu, G. (2009). Immediate provisionalization of single-tooth implants in fresh-extraction sites at the maxillary esthetic zone: Up to 6 years of follow-up. *Implant Dentistry*, 18(4), 326–333. <https://doi.org/10.1097/ID.0b013e31819e3caa>
- Milillo, L., Fiandaca, C., Giannoulis, F., Ottria, L., Lucchese, A., Silvestre, F., & Petrucci, M. (2016). Immediate vs. non-immediate loading post-extractive implants: A comparative study of implant stability quotient (ISQ). *Oral & Implantology*, 9(3), 123–131. <https://doi.org/10.11138/orl/2016.9.3.123>
- Miyamoto, Y., & Obama, T. (2011). Dental cone beam computed tomography analyses of postoperative labial bone thickness in maxillary anterior implants: Comparing immediate and delayed implant placement. *The International Journal of Periodontics & Restorative Dentistry*, 31(3), 215–225.
- Morton, D., Chen, S. T., Martin, W. C., Levine, R. A., & Buser, D. (2014). Consensus statements and recommended clinical procedures regarding optimizing esthetic outcomes in implant dentistry. *The International Journal of Oral & Maxillofacial Implants*, 29, 216–220. <https://doi.org/10.11607/jomi.2013.g3>
- Morton, D. A.-O., Gallucci, G., Lin, W. S., Pjetursson, B., Polido, W., Roehling, S., Sailer, I., Aghaloo, T., Albers, H., Bohner, L., Braut, V., Buser, D., Chen, S., Dawson, A., Eckert, S., Gahlert, M., Hamilton, A., Jaffin, R., Jarry, C., ... Zhou, W. (2018). Group 2 ITI consensus report: Prosthodontics and implant dentistry. *Clinical Oral Implants Research*, 29(Suppl 16), 215–223. <https://doi.org/10.1111/clr.13298>
- Mura, P. (2012). Immediate loading of tapered implants placed in postextraction sockets: Retrospective analysis of the 5-year clinical outcome. *Clinical Implant Dentistry and Related Research*, 14(4), 565–574. <https://doi.org/10.1111/j.1708-8208.2010.00297.x>
- Nikellis, I., Levi, A., & Nicolopoulos, C. (2004). Immediate loading of 190 endosseous dental implants: A prospective observational study of 40 patient treatments with up to 2-year data. *The International Journal of Oral & Maxillofacial Implants*, 19(1), 116–123.
- Nissan, J., Romanos, G. E., Mardinger, O., & Chaushu, G. (2008). Immediate nonfunctional loading of single-tooth implants in the anterior maxilla following augmentation with freeze-dried cancellous block allograft: A case series. *The International Journal of Oral & Maxillofacial Implants*, 23(4), 709–716.
- Noelken, R., Kunkel, M., & Wagner, W. (2011). Immediate implant placement and provisionalization after long-axis root fracture and complete loss of the facial bony lamella. *The International Journal of Periodontics & Restorative Dentistry*, 31(2), 175–183.
- Noelken, R., Moergel, M., Kunkel, M., & Wagner, W. (2018). Immediate and flapless implant insertion and provisionalization using autogenous bone grafts in the esthetic zone: 5-year results. *Clinical Oral Implants Research*, 29(3), 320–327. <https://doi.org/10.1111/clr.13119>
- Noelken, R., Moergel, M., Pausch, T., Kunkel, M., & Wagner, W. (2018). Clinical and esthetic outcome with immediate insertion and provisionalization with or without connective tissue grafting in presence of mucogingival recessions: A retrospective analysis with follow-up between 1 and 8 years. *Clinical Implant Dentistry and Related Research*, 20(3), 285–293. <https://doi.org/10.1111/cid.12595>
- Noelken, R., Morbach, T., Kunkel, M., & Wagner, W. (2007). Immediate function with NobelPerfect implants in the anterior dental arch. *The International Journal of Periodontics & Restorative Dentistry*, 27(3), 277–285.
- Noelken, R., Neffe, B. A., Kunkel, M., & Wagner, W. (2014). Maintenance of marginal bone support and soft tissue esthetics at immediately provisionalized OsseoSpeed implants placed into extraction sites: 2-year results. *Clinical Oral Implants Research*, 25(2), 214–220. <https://doi.org/10.1111/clr.12069>
- Norton, M. R. (2004). A short-term clinical evaluation of immediately restored maxillary TiOblast single-tooth implants. *The International Journal of Oral & Maxillofacial Implants*, 19(2), 274–281.
- Norton, M. R. (2011). The influence of insertion torque on the survival of immediately placed and restored single-tooth implants. *The International Journal of Oral & Maxillofacial Implants*, 26(6), 1333–1343.
- Ostman, P.-O., Hupaló, M., del Castillo, R., Emery, R. W., Cocchetto, R., Vincenzi, G., Wagenberg, B., Vanassche, B., Valentin, A., Clausen, G., Hogan, P., Goené, R., Evans, C., & Testori, T. (2010). Immediate provisionalization of NanoTite implants in

- support of single-tooth and unilateral restorations: One-year interim report of a prospective, multicenter study. *Clinical Implant Dentistry and Related Research*, 12(Suppl 1), e47–e55. <https://doi.org/10.1111/j.1708-8208.2009.00166.x>
- Page, M. J., McKenzie, J. E., Bossuyt, P. M., Boutron, I., Hoffmann, T. C., Mulrow, C. D., Shamseer, L., Tetzlaff, J. M., Akl, E. A., Brennan, S. E., Chou, R., Glanville, J., Grimshaw, J. M., Hróbjartsson, A., Lalu, M. M., Li, T., Loder, E. W., Mayo-Wilson, E., McDonald, S., ... Moher, D. (2021). The PRISMA 2020 statement: An updated guideline for reporting systematic reviews. *Systematic Reviews*, 10(1), 89. <https://doi.org/10.1186/s13643-021-01626-4>
- Palattella, P., Torsello, F., & Cordaro, L. (2008). Two-year prospective clinical comparison of immediate replacement vs. immediate restoration of single tooth in the esthetic zone. *Clinical Oral Implants Research*, 19(11), 1148–1153. <https://doi.org/10.1111/j.1600-0501.2008.01578.x>
- Parel, S. M., & Schow, S. R. (2005). Early clinical experience with a new one-piece implant system in single tooth sites. *Journal of Oral and Maxillofacial Surgery*, 63(9 Suppl 2), 2–10. <https://doi.org/10.1016/j.joms.2005.05.150>
- Paul, S., & Held, U. (2013). Immediate supracrestal implant placement with immediate temporization in the anterior dentition: A retrospective study of 31 implants in 26 patients with up to 5.5-years follow-up. *Clinical Oral Implants Research*, 24(6), 710–717. <https://doi.org/10.1111/j.1600-0501.2012.02465.x>
- Peñarrocha-Diago, M., Demarchi, C. L., Maestre-Ferrín, L., Carrillo, C., Peñarrocha-Oltra, D., & Peñarrocha-Diago, M. A. (2012). A retrospective comparison of 1,022 implants: Immediate versus non-immediate. *The International Journal of Oral & Maxillofacial Implants*, 27(2), 421–427.
- Peron, C., & Romanos, G. (2016). Immediate placement and occlusal loading of single-tooth restorations on partially threaded, titanium-tantalum combined dental implants: 1-year results. *The International Journal of Periodontics & Restorative Dentistry*, 36(3), 393–399. <https://doi.org/10.11607/prd.2583>
- Peron, C., & Romanos, G. (2020). Immediate Provisionalization of single narrow implants in fresh extraction sockets and healed sites: Clinical and radiographic outcomes of 2 years follow-up. *The International Journal of Periodontics & Restorative Dentistry*, 40(3), 417–424. <https://doi.org/10.11607/prd.4622>
- Petrungaro, P. S. (2017). Options for the Esthetic zone using the immediate restoration procedure: Observational data of 15 years and 5000 implants. *The Compendium of Continuing Education in Dentistry*, 38(5), 318–325.
- Pieri, F., Aldini, N. N., Marchetti, C., & Corinaldesi, G. (2011). Influence of implant-abutment interface design on bone and soft tissue levels around immediately placed and restored single-tooth implants: A randomized controlled clinical trial. *The International Journal of Oral & Maxillofacial Implants*, 26(1), 169–178.
- Polizzi, G., Grunder, U., Goené, R., Hatano, N., Henry, P., Jackson, W. J., Kawamura, K., Renouard, F., Rosenberg, R., Triplett, G., Werbit, M., & Lithner, B. (2000). Immediate and delayed implant placement into extraction sockets: A 5-year report. *Clinical Implant Dentistry and Related Research*, 2(2), 93–99. <https://doi.org/10.1111/j.1708-8208.2000.tb00111.x>
- Pommer, B., Danzinger, M., Leite Aique, L., Pitta, J., & Haas, R. (2021). Long-term outcomes of maxillary single-tooth implants in relation to timing protocols of implant placement and loading: Systematic review and meta-analysis. *Clinical Oral Implants Research*, 32(Suppl 21), 56–66. <https://doi.org/10.1111/clr.13838>
- Pozzi, A., Arcuri, L., Carosi, P., Nardi, A., & Kan, J. (2021). Clinical and radiological outcomes of novel digital workflow and dynamic navigation for single-implant immediate loading in aesthetic zone: 1-year prospective case series. *Clinical Oral Implants Research*, 32(12), 1397–1410. <https://doi.org/10.1111/clr.13839>
- Pozzi, A., Tallarico, M., & Moy, P. K. (2015). Immediate loading with a novel implant featured by variable-threaded geometry, internal conical connection and platform shifting: Three-year results from a prospective cohort study. *European Journal of Oral Implantology*, 8(1), 51–63.
- Proussaefs, P., Kan, J., Lozada, J., Kleinman, A., & Farnos, A. (2002). Effects of immediate loading with threaded hydroxyapatite-coated root-form implants on single premolar replacements: A preliminary report. *The International Journal of Oral & Maxillofacial Implants*, 17(4), 567–572.
- Proussaefs, P., & Lozada, J. (2004). Immediate loading of hydroxyapatite-coated implants in the maxillary premolar area: Three-year results of a pilot study. *The Journal of Prosthetic Dentistry*, 91(3), 228–233. <https://doi.org/10.1016/j.prosdent.2003.12.016>
- Puisys, A. A.-O. X., Auzbikaviciute, V., Vindasiute-Narbutė, E., Pranskunas, M., Razukevicius, D., & Linkevicius, T. A.-O. (2022). Immediate implant placement vs. early implant treatment in the esthetic area. A 1-year randomized clinical trial. *Clinical Oral Implants Research*, 33(6), 634–655. <https://doi.org/10.1111/clr.13924>
- R Development Core Team. (2020). *R: A language and environment for statistical computing*. R Foundation for Statistical Computing <https://www.R-project.org/>
- Raes, F., Cooper, L. F., Tarrida, L. G., Vandromme, H., & De Bruyn, H. (2012). A case-control study assessing oral-health-related quality of life after immediately loaded single implants in healed alveolar ridges or extraction sockets. *Clinical Oral Implants Research*, 23(5), 602–608. <https://doi.org/10.1111/j.1600-0501.2011.02178.x>
- Raes, F., Cosyn, J., Crommelinck, E., Coessens, P., & De Bruyn, H. (2011). Immediate and conventional single implant treatment in the anterior maxilla: 1-year results of a case series on hard and soft tissue response and aesthetics. *Journal of Clinical Periodontology*, 38(4), 385–394. <https://doi.org/10.1111/j.1600-051X.2010.01687.x>
- Raes, S., Cosyn, J., Noyelle, A., Raes, F., & De Bruyn, H. (2018). Clinical outcome after 8 to 10 years of immediately restored single implants placed in extraction sockets and healed ridges. *The International Journal of Periodontics & Restorative Dentistry*, 38(3), 337–345. <https://doi.org/10.11607/prd.3478>
- Raes, S., Eghbali, A., Chappuis, V., Raes, F., De Bruyn, H., & Cosyn, J. (2018). A long-term prospective cohort study on immediately restored single tooth implants inserted in extraction sockets and healed ridges: CBCT analyses, soft tissue alterations, aesthetic ratings, and patient-reported outcomes. *Clinical Implant Dentistry and Related Research*, 20(4), 522–530. <https://doi.org/10.1111/cid.12613>
- Raes, S., Raes, F., Cooper, L., Giner Tarrida, L., Vervaeke, S., Cosyn, J., & De Bruyn, H. (2017). Oral health-related quality of life changes after placement of immediately loaded single implants in healed alveolar ridges or extraction sockets: A 5-year prospective follow-up study. *Clinical Oral Implants Research*, 28(6), 662–667. <https://doi.org/10.1111/clr.12858>
- Rai, S., Rai, A., Kumar, T., Kumari, M., Somanna, M. K., & Bandgar, S. (2020). Immediately loaded single unit dental implants: A clinical study. *Journal of Pharmacy & Biomedical Sciences*, 12(Suppl 1), S245–S253. [https://doi.org/10.4103/jpbs.JPBS\\_72\\_20](https://doi.org/10.4103/jpbs.JPBS_72_20)
- Ribeiro, F. S., Pontes, A. E. F., Marcantonio, E., Piattelli, A., Neto, R. J. B., & Marcantonio, E., Jr. (2008). Success rate of immediate non-functional loaded single-tooth implants: Immediate versus delayed implantation. *Implant Dentistry*, 17(1), 109–117. <https://doi.org/10.1097/ID.0b013e318166cb84>
- Rizkallah, N., Fischer, S., & Kraut, R. A. (2013). Correlation between insertion torque and survival rates in immediately loaded implants in the maxilla: A retrospective study. *Implant Dentistry*, 22(3), 250–254. <https://doi.org/10.1097/ID.0b013e3182938cf1>
- Roe, P., Kan, J. Y. K., Rungcharassaeng, K., Caruso, J. M., Zimmerman, G., & Mesquida, J. (2012). Horizontal and vertical dimensional changes

- of peri-implant facial bone following immediate placement and provisionalization of maxillary anterior single implants: A 1-year cone beam computed tomography study. *The International Journal of Oral & Maxillofacial Implants*, 27(2), 393–400.
- Rosa, J. C. M. d., Rosa, A. C. P. d. O., Francischone, C. E., & Sotto-Maior, B. S. (2014). Esthetic outcomes and tissue stability of implant placement in compromised sockets following immediate dentoalveolar restoration: Results of a prospective case series at 58 months follow-up. *The International Journal of Periodontics & Restorative Dentistry*, 34(2), 199–208. <https://doi.org/10.11607/prd.1858>
- Ross, S. B., Pette, G. A., Parker, W. B., & Hardigan, P. (2014). Gingival margin changes in maxillary anterior sites after single immediate implant placement and provisionalization: A 5-year retrospective study of 47 patients. *The International Journal of Oral & Maxillofacial Implants*, 29(1), 127–134. <https://doi.org/10.11607/jomi.3124>
- Rungcharassaeng, K., Kan, J. Y. K., Yoshino, S., Morimoto, T., & Zimmerman, G. (2012). Immediate implant placement and provisionalization with and without a connective tissue graft: An analysis of facial gingival tissue thickness. *The International Journal of Periodontics & Restorative Dentistry*, 32(6), 657–663.
- Ryser, M. R., Block, M. S., & Mercante, D. E. (2005). Correlation of papilla to crestal bone levels around single tooth implants in immediate or delayed crown protocols. *Journal of Oral and Maxillofacial Surgery*, 63(8), 1184–1195. <https://doi.org/10.1016/j.joms.2005.04.025>
- Saedi Germi, A., Ghasemi Barghi, V., Jafari, K., Nemati, R., & Yeganzad, S. (2020). Aesthetics outcome of immediately restored single implants placed in extraction sockets in the anterior maxilla: A case series study. *Journal of Dental Research Dental Clinics Dental Prospects*, 14(1), 48–53. <https://doi.org/10.34172/joddd.2020.007>
- Saito, H., Chu, S. J., Reynolds, M. A., & Tarnow, D. P. (2016). Provisional restorations used in immediate implant placement provide a platform to promote Peri-implant soft tissue healing: A pilot study. *The International Journal of Periodontics & Restorative Dentistry*, 36(1), 47–52. <https://doi.org/10.11607/prd.1945>
- Sanz-Sánchez, I., Sanz-Martín, I., Figuero, E., & Sanz, M. (2015). Clinical efficacy of immediate implant loading protocols compared to conventional loading depending on the type of the restoration: A systematic review. *Clinical Oral Implants Research*, 26(8), 964–982. <https://doi.org/10.1111/clr.12428>
- Sarnowski, A. A., & Paul, B. F. (2012). A retrospective analysis of 12 immediate-implant restorations in the maxillary premolar region. *The Compendium of Continuing Education in Dentistry*, 33(5), e83–e87.
- Sato, R. K., Thomé, G., Fontão, F. N. G. K., de Melo Filho, A., & Melo, A. C. M. (2017). Morse taper implants immediately loaded in fresh extraction sockets: A prospective cohort study. *Implant Dentistry*, 26(3), 345–350. <https://doi.org/10.1097/ID.0000000000000575>
- Schrott, A., Riggi-Heiniger, M., Maruo, K., & Gallucci, G. O. (2014). Implant loading protocols for partially edentulous patients with extended edentulous sites—a systematic review and meta-analysis. *The International Journal of Oral & Maxillofacial Implants*, 29(Suppl), 239–255. <https://doi.org/10.11607/jomi.2014suppl.g4.2>
- Schwartz-Arad, D., Laviv, A., & Levin, L. (2007). Survival of immediately provisionalized dental implants placed immediately into fresh extraction sockets. *Journal of Periodontology*, 78(2), 219–223. <https://doi.org/10.1902/jop.2007.060288>
- Seyssens, L., De Lat, L., & Cosyn, J. (2021). Immediate implant placement with or without connective tissue graft: A systematic review and meta-analysis. *Journal of Clinical Periodontology*, 48(2), 284–301. <https://doi.org/10.1111/jcpe.13397>
- Seyssens, L., Eeckhout, C., & Cosyn, J. (2022). Immediate implant placement with or without socket grafting: A systematic review and meta-analysis. *Clinical Implant Dentistry and Related Research*, 24(3), 339–351. <https://doi.org/10.1111/cid.13079>
- Seyssens, L., Eghbali, A., & Cosyn, J. (2020). A 10-year prospective study on single immediate implants. *Journal of Clinical Periodontology*, 47(10), 1248–1258. <https://doi.org/10.1111/jcpe.13352>
- Shanelec, D. A. (2005). Anterior esthetic implants: Microsurgical placement in extraction sockets with immediate provisionals. *Journal of the California Dental Association*, 33(3), 233–240.
- Shi, J.-Y., Lv, X.-L., Gu, Y.-X., & Lai, H.-C. (2020). Angulated screw-retained and cemented implant crowns following flapless immediate implant placement in the aesthetic region: A 1-year prospective cohort study. *International Journal of Oral Implantology*, 13(3), 269–277.
- Shibly, O., Kutkut, A., & Albandar, J. M. (2012). One-year re-entry results of guided bone regeneration around immediately placed implants with immediate or conventional loading: A case series. *Journal of the International Academy of Periodontology*, 14(3), 62–68.
- Shibly, O., Kutkut, A., Patel, N., & Albandar, J. M. (2012). Immediate implants with immediate loading vs. conventional loading: 1-year randomized clinical trial. *Clinical Implant Dentistry and Related Research*, 14(5), 663–671. <https://doi.org/10.1111/j.1708-8208.2010.00310.x>
- Shibly, O., Patel, N., Albandar, J. M., & Kutkut, A. (2010). Bone regeneration around implants in periodontally compromised patients: A randomized clinical trial of the effect of immediate implant with immediate loading. *Journal of Periodontology*, 81(12), 1743–1751. <https://doi.org/10.1902/jop.2010.100162>
- Siebers, D., Gehrke, P., & Schliephake, H. (2010). Delayed function of dental implants: A 1- to 7-year follow-up study of 222 implants. *The International Journal of Oral & Maxillofacial Implants*, 25(6), 1195–1202.
- Simmons, D. E., Palaiologou, A., Teitelbaum, A. G., Billiot, S., Popat, L. J., & Maney, P. (2016). Immediate and early loading of hydrothermally treated, hydroxyapatite-coated dental implants: 2-year results from a prospective clinical study. *The Journal of Oral Implantology*, 42(1), 17–25. <https://doi.org/10.1563/aaid-joi-D-14-00283>
- Siormpas, K. D., Mitsias, M. E., Kotsiotou-Siormpa, E., Garber, D., & Kotsakis, G. A. (2014). Immediate implant placement in the esthetic zone utilizing the “root-membrane” technique: Clinical results up to 5 years postloading. *The International Journal of Oral & Maxillofacial Implants*, 29(6), 1397–1405. <https://doi.org/10.11607/jomi.3707>
- Slagter, K. W., den Hartog, L., Bakker, N. A., Vissink, A., Meijer, H. J., & Raghoobar, G. M. (2014). Immediate placement of dental implants in the esthetic zone: A systematic review and pooled analysis. *Journal of Periodontology*, 85(7), 241–250. <https://doi.org/10.1902/jop.2014.130632>
- Slagter, K. W., Raghoobar, G. M., Bakker, N. A., Vissink, A., & Meijer, H. J. A. (2017). Buccal bone thickness at dental implants in the aesthetic zone: A 1-year follow-up cone beam computed tomography study. *Journal of Cranio-Maxillo-Facial Surgery*, 45(1), 13–19. <https://doi.org/10.1016/j.jcms.2016.11.004>
- Slagter, K. W., Raghoobar, G. M., Hentenaar, D. F. M., Vissink, A., & Meijer, H. J. A. (2021). Immediate placement of single implants with or without immediate provisionalization in the maxillary aesthetic region: A 5-year comparative study. *Journal of Clinical Periodontology*, 48(2), 272–283. <https://doi.org/10.1111/jcpe.13398>
- Soardi, C. M., Bianchi, A. E., Zandanel, E., & Spinato, S. (2012). Clinical and radiographic evaluation of immediately loaded one-piece implants placed into fresh extraction sockets. *Quintessence International*, 43(6), 449–456.
- Spinato, S., Agnini, A., Chiesi, M., Agnini, A. M., & Wang, H. L. (2012). Comparison between graft and no-graft in an immediate placed and immediate nonfunctional loaded implant. *Implant Dentistry*, 21(2), 97–103. <https://doi.org/10.1097/ID.0b013e318248866c>
- Spittal, M. J., Pirkis, J., & Gurrin, L. C. (2015). Meta-analysis of incidence rate data in the presence of zero events. *BMC Medical Research Methodology*, 15, 42. <https://doi.org/10.1186/s12874-015-0031-0>
- Stacchi, C., Lombardi, T., Baldi, D., Bugea, C., Rapani, A., Perinetti, G., Itri, A., Carpita, D., Audenino, G., Bianco, G., Verardi, S., Carossa,

- S., & Schierano, G. (2018). Immediate loading of implant-supported single crowns after conventional and ultrasonic implant site preparation: A multicenter randomized controlled clinical trial. *BioMed Research International*, 2018, 6817154. <https://doi.org/10.1155/2018/6817154>
- Stanley, M., Braga, F. C., & Jordao, B. M. (2017). Immediate loading of single implants in the anterior maxilla: A 1-year prospective clinical study on 34 patients. *International Journal of Dentistry*, 2017, 8346496. <https://doi.org/10.1155/2017/8346496>
- Sterne, J. A. C., Savović, J., Page, M. J., Elbers, R. G., Blencowe, N. S., Boutron, I., Cates, C. J., Cheng, H. Y., Corbett, M. S., Eldridge, S. M., Emberson, J. R., Hernán, M. A., Hopewell, S., Hróbjartsson, A., Junqueira, D. R., Jüni, P., Kirkham, J. J., Lasserson, T., Li, T., ... Higgins, J. P. T. (2019). RoB 2: A revised tool for assessing risk of bias in randomised trials. *BMJ*, 366, l4898. <https://doi.org/10.1136/bmj.l4898>
- Tadi, D. P., Piniseti, S., Gujjalapudi, M., Kakaraparthi, S., Kolasani, B., & Vadapalli, S. H. B. (2014). Evaluation of initial stability and crestal bone loss in immediate implant placement: An in vivo study. *Journal of International Society of Preventive & Community Dentistry*, 4(3), 139–144. <https://doi.org/10.4103/2231-0762.142002>
- Tarnow, D. P., Chu, S. J., Salama, M. A., Stappert, C. F. J., Salama, H., Garber, D. A., Sarnachiaro, G. O., Sarnachiaro, E., Gotta, S. L., & Saito, H. (2014). Flapless postextraction socket implant placement in the esthetic zone: Part 1. The effect of bone grafting and/or provisional restoration on facial-palatal ridge dimensional change—a retrospective cohort study. *The International Journal of Periodontics & Restorative Dentistry*, 34(3), 323–331. <https://doi.org/10.11607/prd.1821>
- Testori, T., Galli, F., Capelli, M., Zuffetti, F., & Esposito, M. (2007). Immediate nonocclusal versus early loading of dental implants in partially edentulous patients: 1-year results from a multicenter, randomized controlled clinical trial. *The International Journal of Oral & Maxillofacial Implants*, 22(5), 815–822.
- Tortamano, P., Camargo, L. O. A., Bello-Silva, M. S., & Kanashiro, L. H. (2010). Immediate implant placement and restoration in the esthetic zone: A prospective study with 18 months of follow-up. *The International Journal of Oral & Maxillofacial Implants*, 25(2), 345–350.
- Valentini, P., Abensur, D., Albertini, J. F., & Rocchesani, M. (2010). Immediate provisionalization of single extraction-site implants in the esthetic zone: A clinical evaluation. *The International Journal of Periodontics & Restorative Dentistry*, 30(1), 41–51.
- van Kesteren, C. J., Schoolfield, J., West, J., & Oates, T. (2010). A prospective randomized clinical study of changes in soft tissue position following immediate and delayed implant placement. *The International Journal of Oral & Maxillofacial Implants*, 25(3), 562–570.
- Van Nimwegen, W. G., Goené, R. J., Van Daelen, A. C. L., Stellingsma, K., Raghoobar, G. M., & Meijer, H. J. A. (2016). Immediate implant placement and provisionalisation in the aesthetic zone. *Journal of Oral Rehabilitation*, 43(10), 745–752. <https://doi.org/10.1111/joor.12420>
- van Nimwegen, W. G., Raghoobar, G. M., Zuiderveld, E. G., Jung, R. E., Meijer, H. J. A., & Mühlemann, S. (2018). Immediate placement and provisionalization of implants in the aesthetic zone with or without a connective tissue graft: A 1-year randomized controlled trial and volumetric study. *Clinical Oral Implants Research*, 29(7), 671–678. <https://doi.org/10.1111/clr.13258>
- Vanden Bogaerde, L., Rangert, B., & Wendelhag, I. (2005). Immediate/early function of Brånemark system TiUnite implants in fresh extraction sockets in maxillae and posterior mandibles: An 18-month prospective clinical study. *Clinical Implant Dentistry and Related Research*, 7(Suppl 1), S121–S130. <https://doi.org/10.1111/j.1708-8208.2005.tb00084.x>
- Vandeweghe, S., Cosyn, J., Thevissen, E., Van den Berghe, L., & De Bruyn, H. (2012). A 1-year prospective study on Co-Axis implants immediately loaded with a full ceramic crown. *Clinical Implant Dentistry and Related Research*, 14(Suppl 1), e126–e138. <https://doi.org/10.1111/j.1708-8208.2011.00391.x>
- Vandeweghe, S., Nicolopoulos, C., Thevissen, E., Jimbo, R., Wennerberg, A., & De Bruyn, H. (2013). Immediate loading of screw-retained all-ceramic crowns in immediate versus delayed single implant placement. *The International Journal of Prosthodontics*, 26(5), 458–464. <https://doi.org/10.11607/ijp.3075>
- Velasco-Ortega, E., Wojtovicz, E., España-Lopez, A., Jimenez-Guerra, A., Monsalve-Guil, L., Ortiz-García, I., & Serrera-Figallo, M. A. (2018). Survival rates and bone loss after immediate loading of implants in fresh extraction sockets (single gaps). A clinical prospective study with 4 year follow-up. *Medicina Oral, Patología Oral y Cirugía Bucal*, 23(2), e230–e236. <https://doi.org/10.4317/medoral.21651>
- Vervaeke, S., Collaert, B., & De Bruyn, H. (2013). Immediate loading of implants in the maxilla: Survival and bone loss after at least 2 years in function. *The International Journal of Oral & Maxillofacial Implants*, 28(1), 216–221. <https://doi.org/10.11607/jomi.2606>
- Vidigal, G. M., Jr., Groisman, M., Clavijo, V. G., Barros Paulinelli Santos, I. G., & Fischer, R. G. (2017). Evaluation of pink and white Esthetic scores for immediately placed and provisionally restored implants in the anterior maxilla. *The International Journal of Oral & Maxillofacial Implants*, 32(3), 625–632. <https://doi.org/10.11607/jomi.5149>
- Waasdorp, J. A., Evian, C. I., & Mandracchia, M. (2010). Immediate placement of implants into infected sites: A systematic review of the literature. *Journal of Periodontology*, 81(6), 801–808. <https://doi.org/10.1902/jop.2010.090706>
- Wagenberg, B. D., Froum, S. J., & Eckert, S. E. (2013). Long-term bone stability assessment around 1,187 immediately placed implants with 1- to 22-year follow-up. *The International Journal of Oral & Maxillofacial Implants*, 28(2), 605–612. <https://doi.org/10.11607/jomi.2809>
- Wang, I. C., Chan, H.-L., Kinney, J., & Wang, H.-L. (2020). Volumetric facial contour changes of immediately placed implants with and without immediate provisionalization. *Journal of Periodontology*, 91(7), 906–916. <https://doi.org/10.1002/JPER.19-0308>
- Yang, X., Zhou, T., Zhou, N., & Man, Y. (2019). The thickness of labial bone affects the esthetics of immediate implant placement and provisionalization in the esthetic zone: A prospective cohort study. *Clinical Implant Dentistry and Related Research*, 21(3), 482–491. <https://doi.org/10.1111/cid.12785>
- Yoo, R. H., Chuang, S.-K., Erakat, M. S., Weed, M., & Dodson, T. B. (2006). Changes in crestal bone levels for immediately loaded implants. *The International Journal of Oral & Maxillofacial Implants*, 21(2), 253–261.
- Zafiroopoulos, G.-G. K., Deli, G., Bartee, B. K., & Hoffmann, O. (2010). Single-tooth implant placement and loading in fresh and regenerated extraction sockets. Five-year results: A case series using two different implant designs. *Journal of Periodontology*, 81(4), 604–615. <https://doi.org/10.1902/jop.2009.090316>
- Zembić, A., Johannesen, L. H., Schou, S., Malo, P., Reichert, T., Farella, M., & Hämmerle, C. H. F. (2012). Immediately restored one-piece single-tooth implants with reduced diameter: One-year results of a multi-center study. *Clinical Oral Implants Research*, 23(1), 49–54. <https://doi.org/10.1111/j.1600-0501.2011.02174.x>
- Zhang, S., Wang, S., & Song, Y. (2017). Immediate loading for implant restoration compared with early or conventional loading: A meta-analysis. *Journal of Cranio-Maxillo-Facial Surgery*, 45(1878–4119 (Electronic)), 793–803. <https://doi.org/10.1016/j.jcms.2016.05.002>
- Zhou, W., Gallucci, G. O., Chen, S., Buser, D., & Hamilton, A. (2021). Placement and loading protocols for single implants in different locations: A systematic review. *The International Journal of Oral &*

- Maxillofacial Implants, 36(4), e72–e89. <https://doi.org/10.11607/jomi.8750>
- Zuffetti, F., Capelli, M., Galli, F., Del Fabbro, M., & Testori, T. (2017). Post-extraction implant placement into infected versus non-infected sites: A multicenter retrospective clinical study. *Clinical Implant Dentistry and Related Research*, 19(5), 833–840. <https://doi.org/10.1111/cid.12523>
- Zuiderveld, E. G., Meijer, H. J. A., den Hartog, L., Vissink, A., & Raghoobar, G. M. (2018). Effect of connective tissue grafting on peri-implant tissue in single immediate implant sites: A RCT. *Journal of Clinical Periodontology*, 45(2), 253–264. <https://doi.org/10.1111/jcpe.12820>

**How to cite this article:** Hamilton, A., Gonzaga, L., Amorim, K., Wittneben, J.-G., Martig, L., Morton, D., Martin, W., Gallucci, G. O., & Wismeijer, D. (2023). Selection criteria for immediate implant placement and immediate loading for single tooth replacement in the maxillary esthetic zone: A systematic review and meta-analysis. *Clinical Oral Implants Research*, 34(Suppl. 26), 304–348. <https://doi.org/10.1111/clr.14109>