

The Alan Turing Institute

**Hidden roles: *perspectives, paths
and lived experiences***

Festival of Hidden REF: 21 September 2023

Emma Karoune, Cassandra Gould Van Praag,
Malvika Sharan



Icebreaker

**What research roles exist
that are overlooked and/or
Hidden?**

Grab a sticky note and stick
on the board/wall.



The Alan Turing Institute

**Hidden roles: *perspectives, paths
and lived experiences***

Festival of Hidden REF: 21 September 2023

Emma Karoune, Cassandra Gould Van Praag,
Malvika Sharan



Introductions



Emma Karoune

Senior Research Community
Manager, Turing Health



**Cassandra Gould Van
Praag**

Senior Research Community
Manager, TRIC:DT



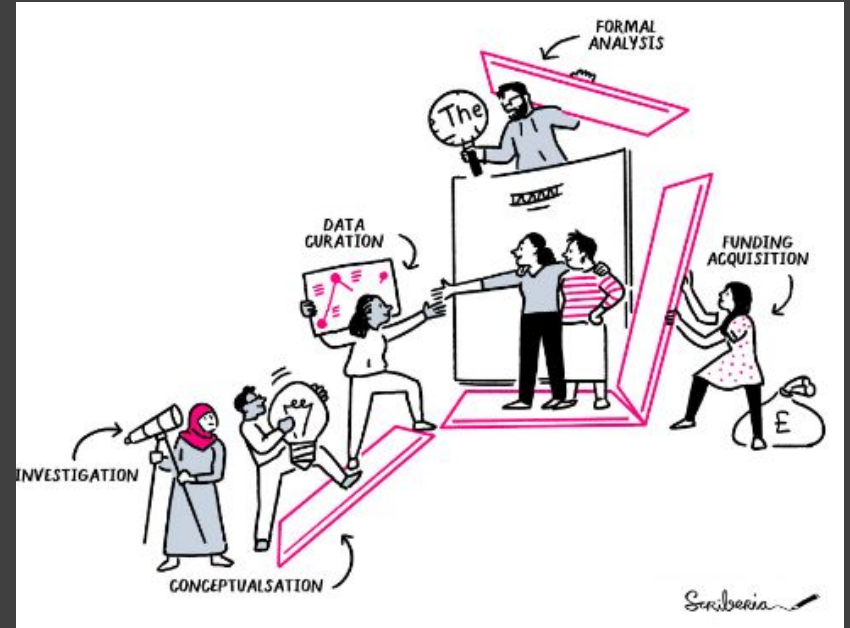
Malvika Sharan

Senior Researcher,
Tools, Practices and Systems
Programme

Activity 1

What are some tasks required to carry out a research project?

Use slido to enter your answers



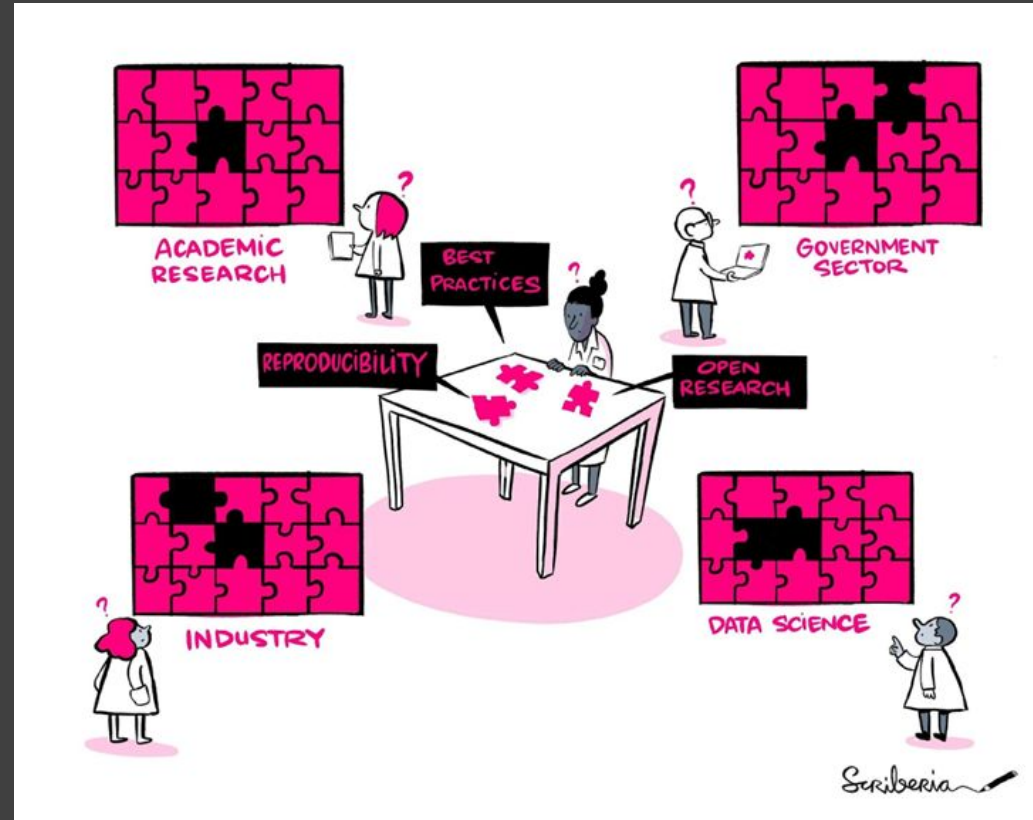
Attend / chair meetings
Manage (cloud) compute resources
Commercialise a product
Peer review
Read literature
Deliver trainings
Archive data & code
Promote EDI and work-life balance
Write papers
Give talks
Bring in funding
Design experiments
Share work with the public
Collect / access data
Set strategy
Maintain ethical & legal principles
Testing & quality control
Track impact
Manage budgets
Run statistical analyses
Mentor colleagues
Promote work to decision makers
Host events
Scope user requirements
Generalise code to software
Report on progress
Visualisation
Manage a team

What does a quantitative researcher do?

@TuringWay @kirstie_j
<https://doi.org/10.5281/zenodo.7749650>

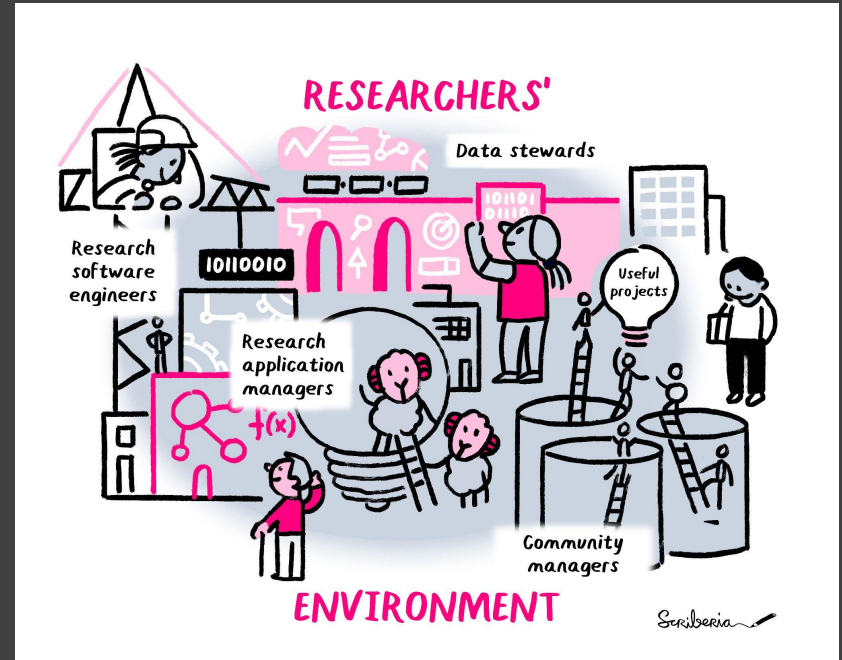
Evolving research and data landscape

- Interdisciplinarity
- Movement to Open research
- Commitment to EDIA
- Inclusive research culture



Research Infrastructure

Physical or digital facilities, resources, **expert workforces and specialised services** available for research and for the use of research communities.



@turingway, CC-BY 4.0 image by *The Turing Way* and Scriberia, Zenodo: <https://zenodo.org/record/7849391>

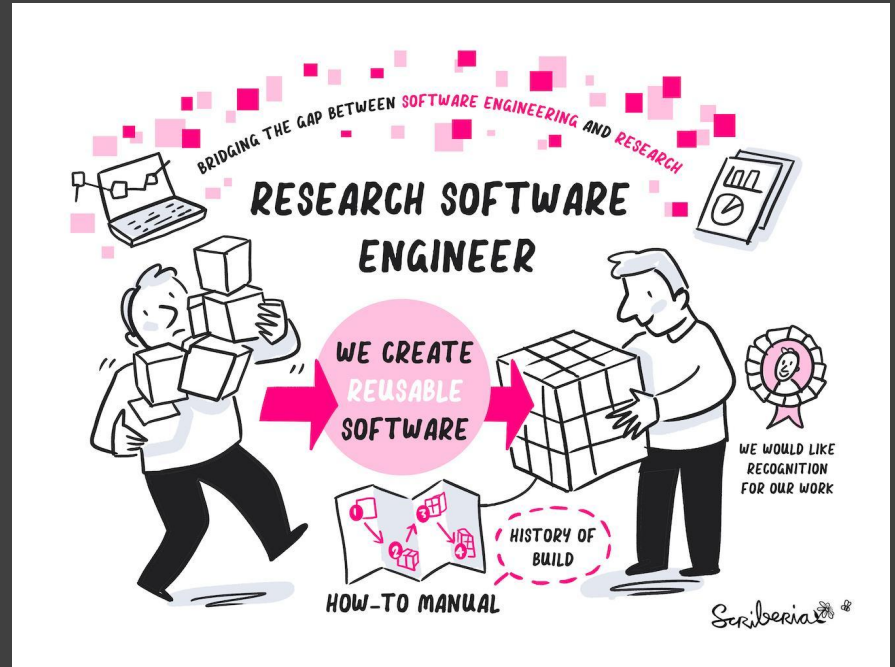
Reference Presentation on 'Investing in Research Infrastructure Roles for culture change' <https://zenodo.org/record/7620215>

References: [Science Europe](#) and [National Institute of Health and Care Research](#)

Research Software Engineering



*Learning from 10 Years of the
RSE movement*

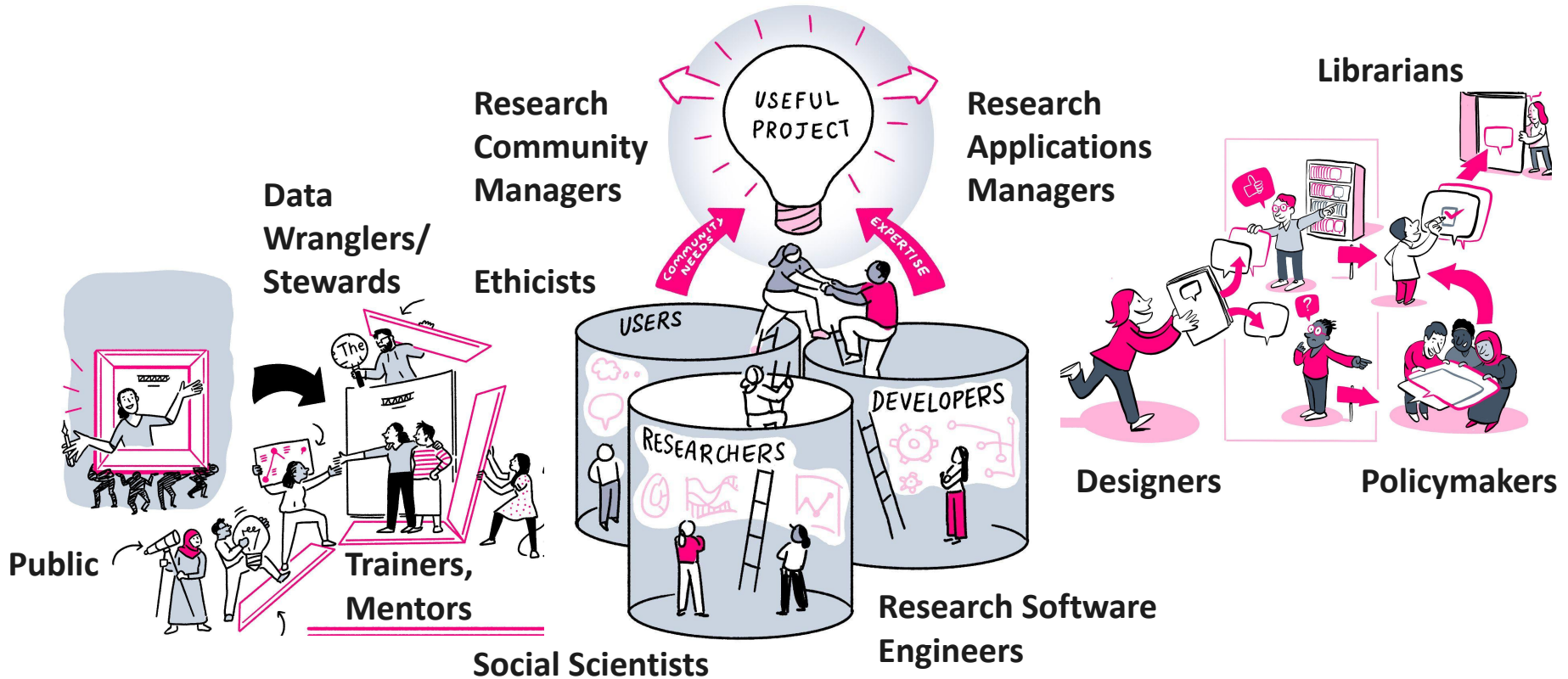


Baxter, R, Chue Hong, N, Gorissen, D,
Hetherington, J & Todorov, I 2012, 'The Research
Software Engineer', Digital Research 2012

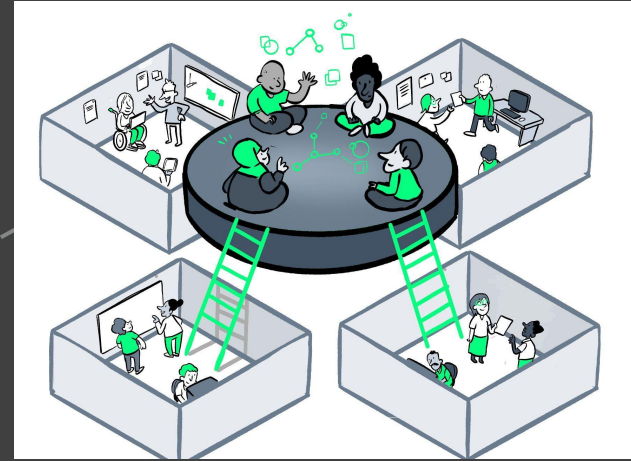
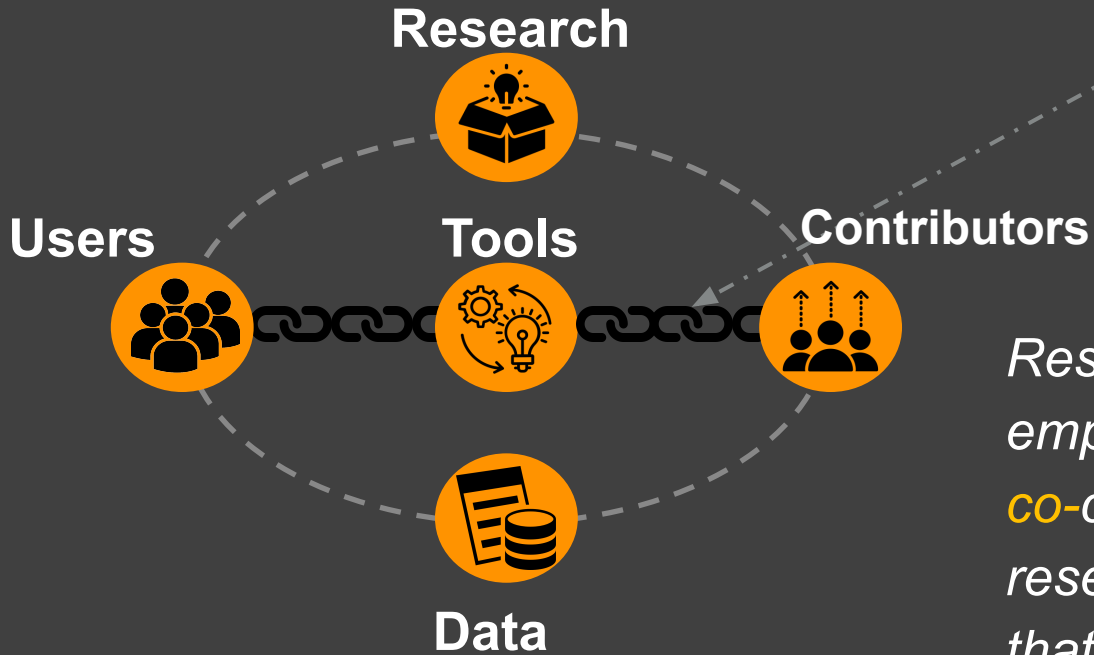
@turingway, CC-BY 4.0, CC-BY image by *The Turing Way* and Scriberia, Zenodo:
<https://doi.org/10.5281/zenodo.3332807>.

Presentation DOI: <https://doi.org/10.5281/zenodo.8356324>

Diversifying Research Roles



Research Community Management



*Research Community Managers empower **diverse stakeholders** to **co-create, maintain and sustain** research processes and outputs that they can equitably benefit from.*

Research Community Manager (RCM)

Through *open, inclusive and reproducible* practices, RCMs build a *shared understanding* of research goals, roadmap and processes.

We combine a range of *socio-technical skills* including scientific communications, stakeholder engagement and domain expertise.

We *facilitate, amplify and champion* collaborative, community-based research processes and outcomes.



Emma Karoune

Now we'd like to learn about your experience!

20 min breakout discussion

In groups (about four people), you will discuss questions about your experience of research infrastructure roles

- Begin with intros!
 - What is your current role?
- Assign a **chair/facilitator** and a **note taker that documents the discussion**
- **Discuss questions 1 and 2**
- Afterwards: Report out

Breakout Discussion 1



20 mins

Question 1: Journey to research infrastructure/Hidden role

How have these roles been formalised - examples?

Or, if not yet formalised, how do you hope for these roles to be formalised?

Question 2: Career progression

What career pathways for progress look like for Hidden roles in your organisation?

The hidden REF

Celebrating all research outputs

2021

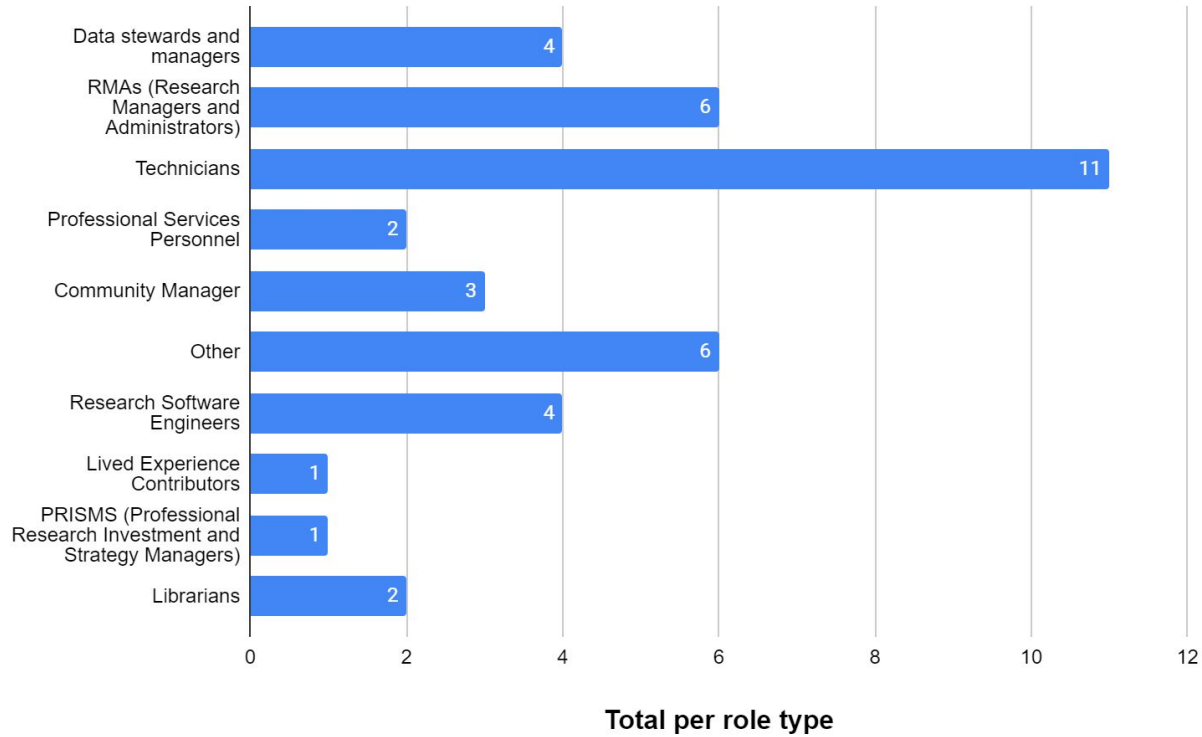
**1 category for Hidden
Role in 2024**

No limit to type of role

- Data stewards and managers
- Librarians
- Technicians
- Live experience contributors
- Research software engineers
- PRISMs - investment & strategy managers
- Public engagement professionals
- Professional services personnel
- Research managers and admins

Who entered Hidden REF 2021?

"Hidden Role" category entries 2021



40 entries for this category

Breakout discussion 2



10 mins

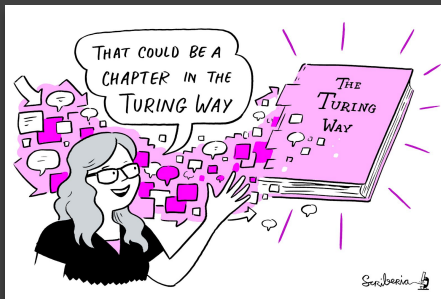
Question 3: Recognition in Hidden REF 2024

How can these Hidden Roles be celebrated as categories in Hidden REF 2024?

The Turing Way

An Open Source guide on Data Science

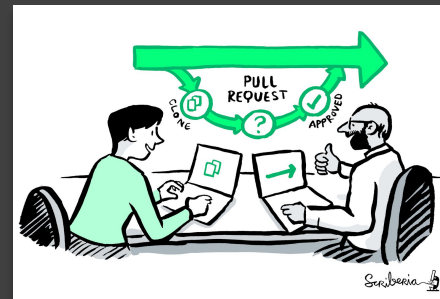
We involve and support a diverse community to make data science reproducible, ethical, collaborative and inclusive for everyone



A book



A global community



An open-source project



A culture of collaboration

The Turing Way: Guides to Data Science



Kirstie Whitaker

Director: Tools,
Practices & Systems
Programme (TPS)



Malvika Sharan

TPS Senior
Researcher: Open
Research & Community



Anne Lee Steele

Community Manager,
The Turing Way



Alexandra
Araujo Alvarez

Project Manager

4+ years

>260 Chapters

Numerous training
and community
resources.



The Turing Way

🔍 Search this book...

Welcome

- Guide for Reproducible Research ▾
- Guide for Project Design ▾
- Guide for Communication ▾
- Guide for Collaboration ▾
- Guide for Ethical Research ▾
- Community Handbook ▾
- Afterword ▾

Research Infrastructure Roles ^

Community Managers

Overview

Data Stewards Overview

Data Steward Personal Story

Data Wrangler Overview

Research Software Engineers
Overview

Research Software
Engineering Personal Story

Research Application
Manager Overview

Research Infrastructure
Developer Overview

Remote Collaboration v

Shared Ownership in Open
Source Projects v

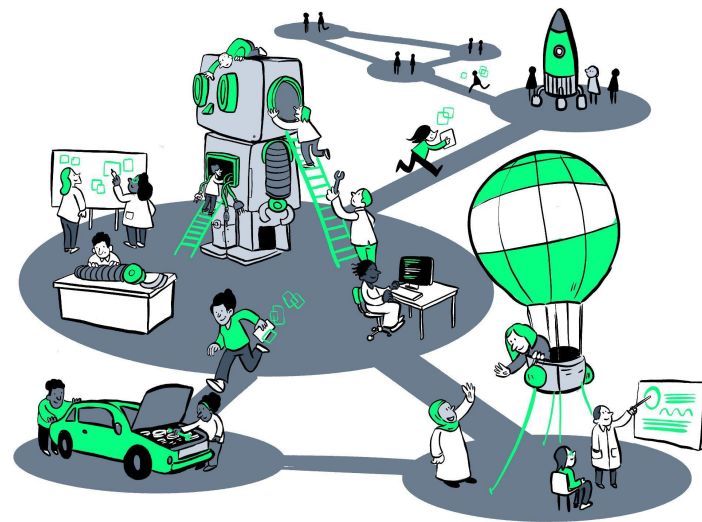
Guide for Ethical Research v

Community Handbook v

Examples of Research Infrastructure Roles

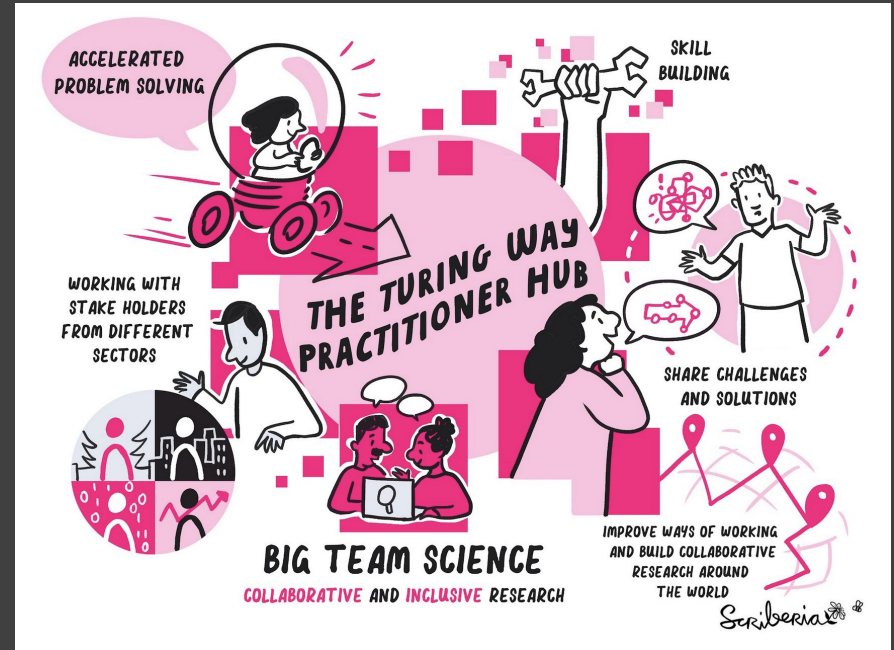
This initial list of examples of Research Infrastructure Roles that has been expanded as part of *The Turing Way* Hackathon Workshop at the [Big Team Science conference 2022](#).

- Community manager
- Project manager
- Research software engineer
- Research application manager
- Programme manager
- Data steward
- Data wrangler
- Research infrastructure developer
- Partnerships development manager
- Grant application manager
- Community engagement lead
- Librarian
- Communications manager
- Events manager
- Participatory research manager



Broader Recognition for Research Infrastructure Roles

- **The Turing Way Practitioners Hub** in close collaboration with UK orgs (government, industry, public sector)
- **The Turing's Skill Policy Award** for engaging with policy ecosystem - led by **Dr. Emma Karoune**



Policies / Guidelines for Open Leadership

Recognising all kinds of roles through recommendations & policies.

UK Research and Development Roadmap

Attract, retain, develop the talented, diverse people and teams. Ensure that our science, research, innovation system is responsive to our society

Towards better recognition for Research Infrastructure Specialists (Australia)

Professional staff become more valuable with experience and need to be rewarded as such – otherwise they will go elsewhere. Australian universities need to improve how they reward and recognise this important cohort of specialists, and the NCRIS Project Directors are calling for a change in how [Research Infrastructure] specialists are classified.

WE NEED TO MOVE AWAY FROM THE CONCEPT OF AUTHORSHIP..

DATA CURATION

FORMAL ANALYSIS

FUNDING ACQUISITION

The

Preprint
A manifesto for rewarding and recognising Team Infrastructure Roles

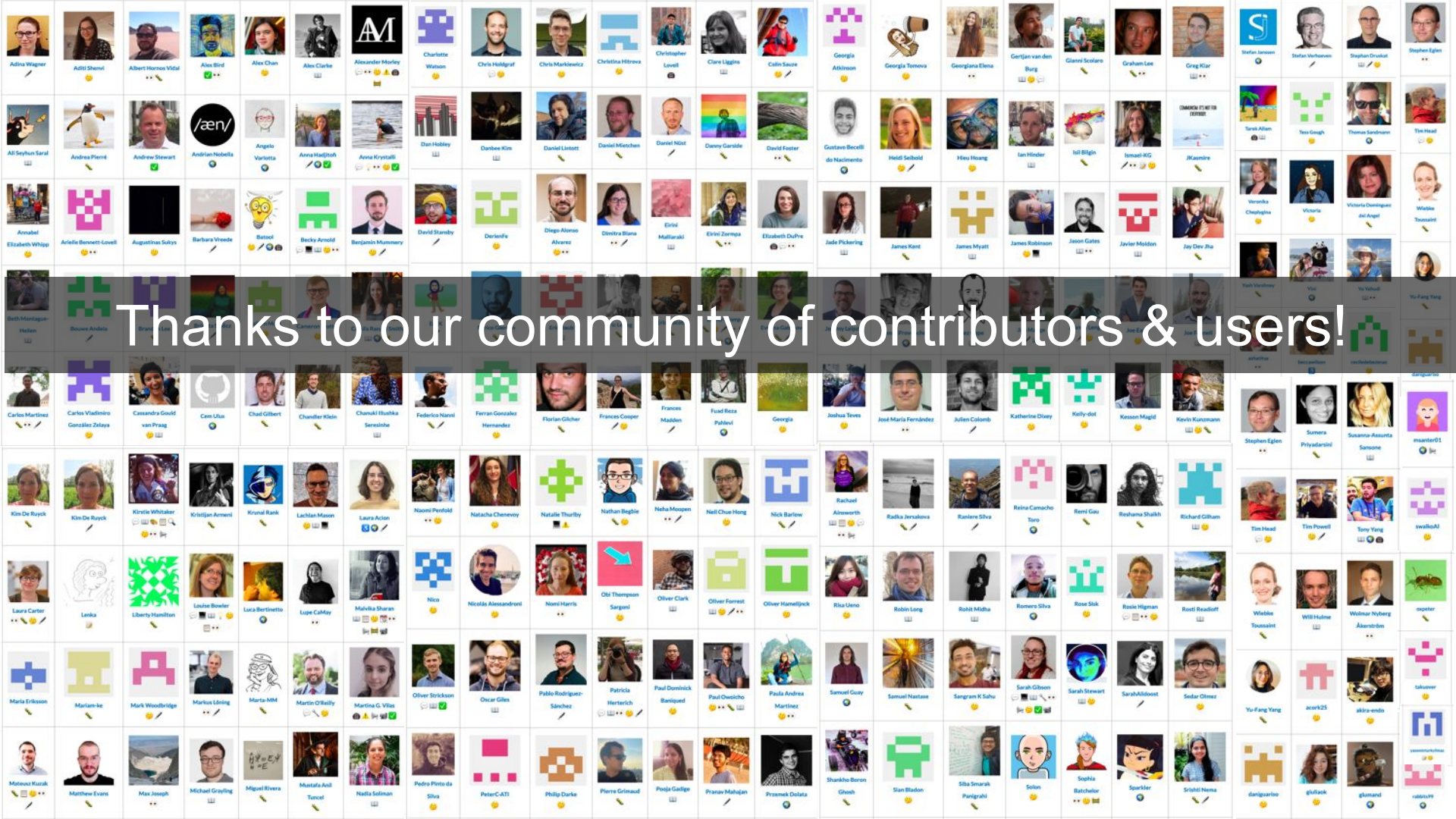
AB TO IS SA HA

View authors

Summary
New module based on: Abstract for the Journal of Trial and Error special issue on 'Consequences of the Scientific Reform Movement'

Preprint: A manifesto for rewarding and recognising Team Infrastructure Roles, doi.org/10.53962/knm3-bnvx

<https://www.gov.uk/government/publications/uk-research-and-development-roadmap> - UK Reference,
<https://anff.org.au/news/towards-better-recognition-for-research-infrastructure-specialists> - Australia Reference



Thanks to our community of contributors & users!

Connecting with *The Turing Way* Project

- *Collaboration Cafes*
 - 1st & 3rd Wednesdays
(15:00 UTC+1)
- *Fireside Chats*
 - Monthly
- *More ways to connect*
 - Join our slack channel
 - Sign up to our newsletter



bit.ly/turingway

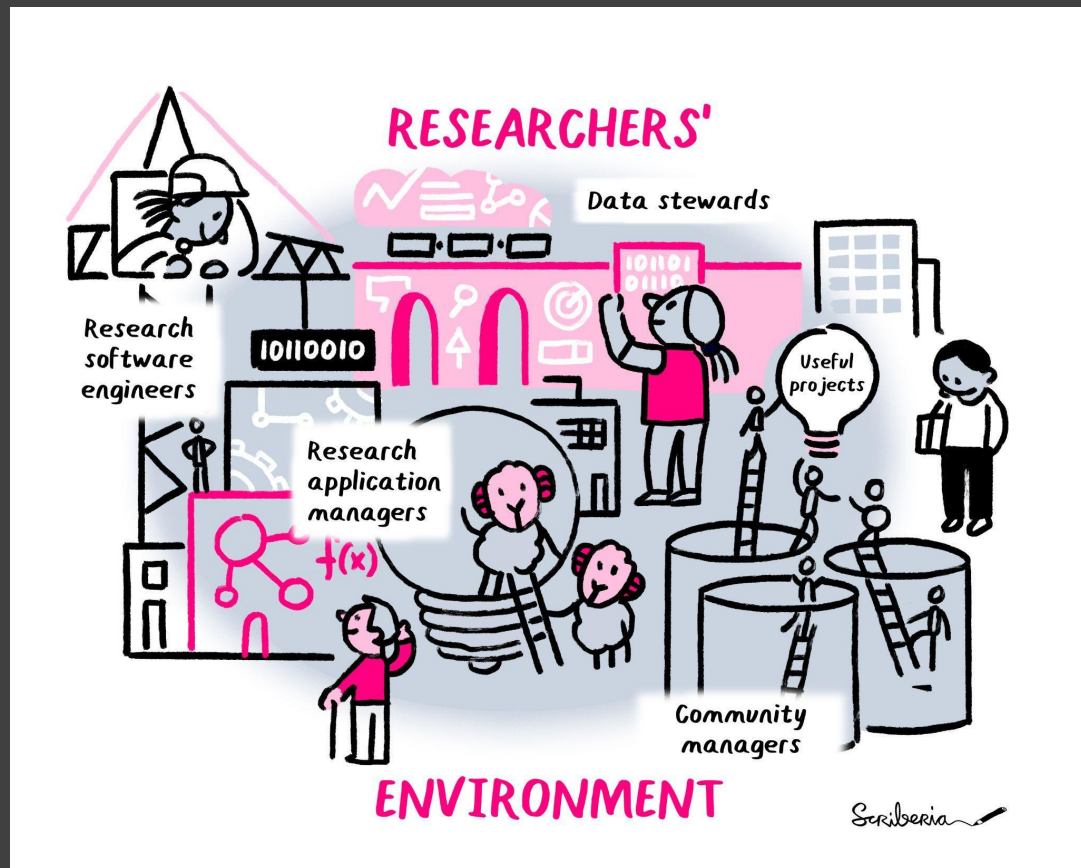
The Alan Turing Institute

Acknowledgements:

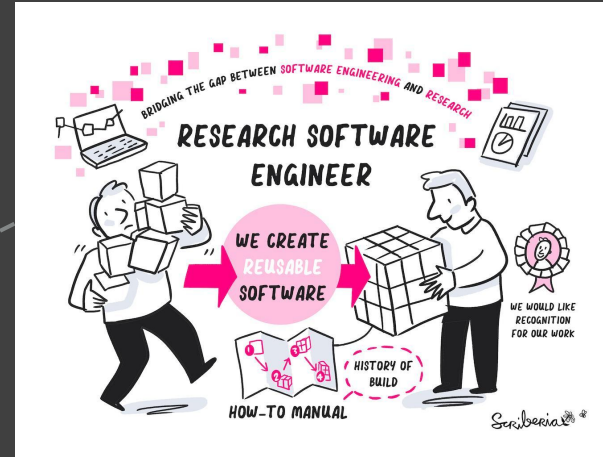
- The Turing Way team, Kirstie Whitaker, Malvika Sharan, Anne Lee Steele, Alexandra Araujo Alvarez
- *The Turing Way* community, contributors & collaborators
- Book: the-turing-way.netlify.com
- Twitter: twitter.com/turingway / Mastodon: <https://fosstodon.org/@turingway>
- Newsletter: tinyletter.com/TuringWay
- Slack: tinyurl.com/jointuringwayslack
- GitHub: github.com/alan-turing-institute/the-turing-way
- Original artwork by Scriberia: <https://doi.org/10.5281/zenodo.3332807>



More examples of research infrastructure roles for your reference



Research Data & Engineering Roles



The Research Engineering is a professional field that includes Research Data Scientists and Research Software Engineers. They are **expert collaborators** who bring their **technical knowledge and data skills** to research projects.

Research Data Scientist (RDS)

We are *generalists with broad skills* working with data and specialist researchers across domains.

RDS creates *open and reusable tools* to ask questions and draw insights from data.

As expert collaborators, we apply *reproducible research best practices* to research directly through collaboration.



Lydia France

Research Software Engineer (RSE)

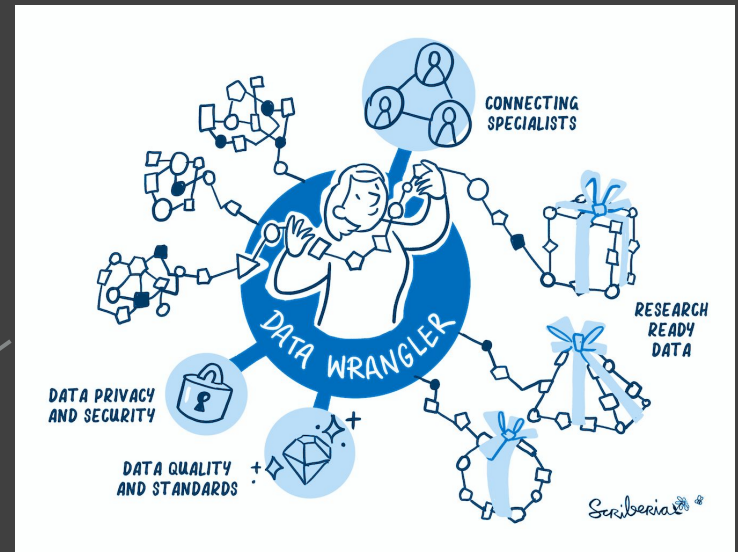
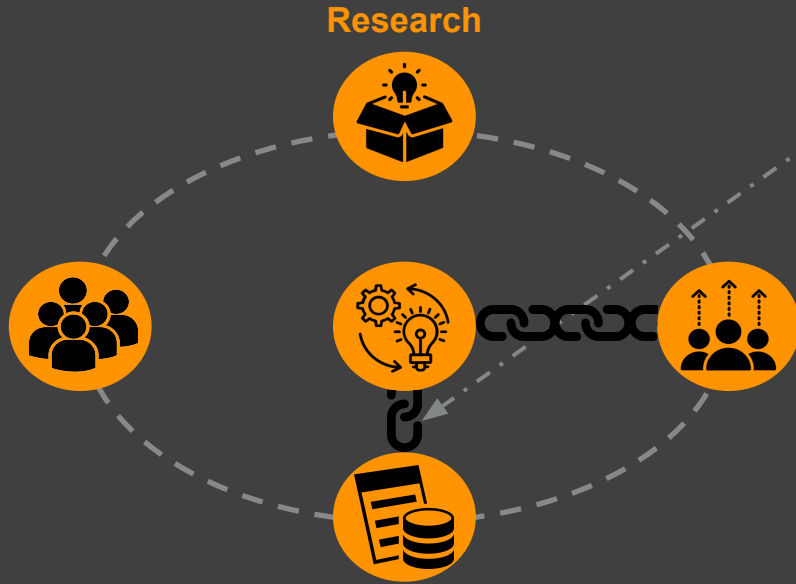
RSEs promote *software-development best practices* in research software through practices such as version control, testing, documentation and reusability.

We apply and teach *broad set of technical skills* and expertise by being embedded on research projects.



Jim Madge

Data Wrangling



Data Wranglers are specialised type of data scientists, primarily working with data in the space between data generators & data analysts.

Data Wrangler

*Data Wranglers are involved in projects with many datasets, or **complex data needs**.*

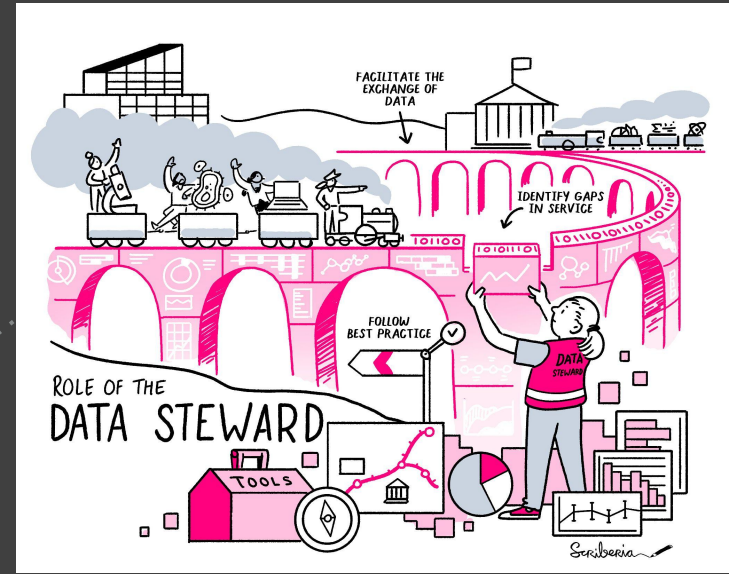
*We understand the intended use of the data and **conduct preliminary analysis** in the context of research questions.*

*We collaborate with multiple specialists to **provide 'research-ready data'** whilst upholding domain-specific standards and data privacy regulations.*



Mahwish Mohammad

Data Stewardship



*‘Data Steward’ is an umbrella term for numerous **infrastructure** support roles that involve the **creation, management and usage of research data.***

Data Steward

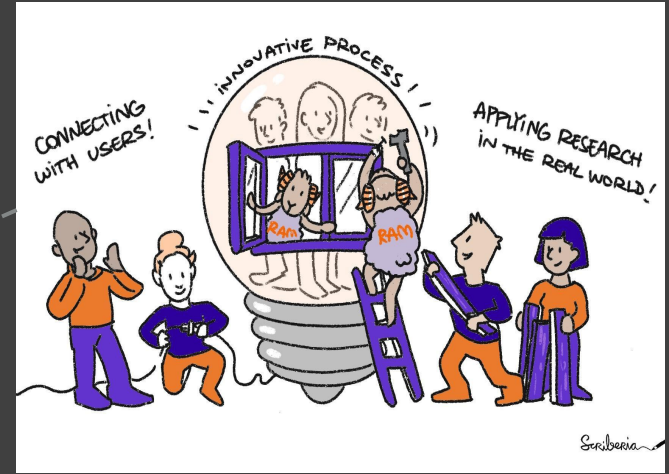
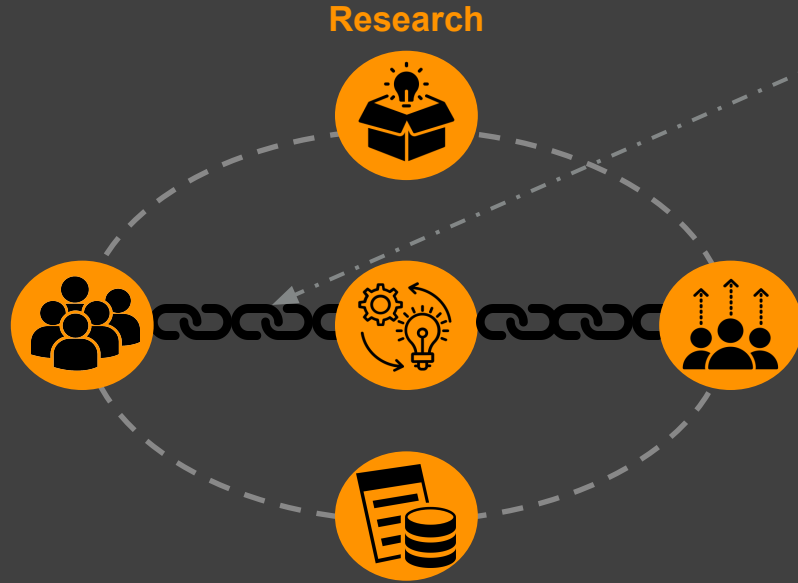
*We advise researchers on how to **manage data and other research objects** including which storage locations to use and what are best practices to share them.*

*We deliver **Research Data Management and Open Science** courses for PhD researchers and check **Data Management Plans** for wide range of research projects.*



Esther Plomp

Research Applications Manager

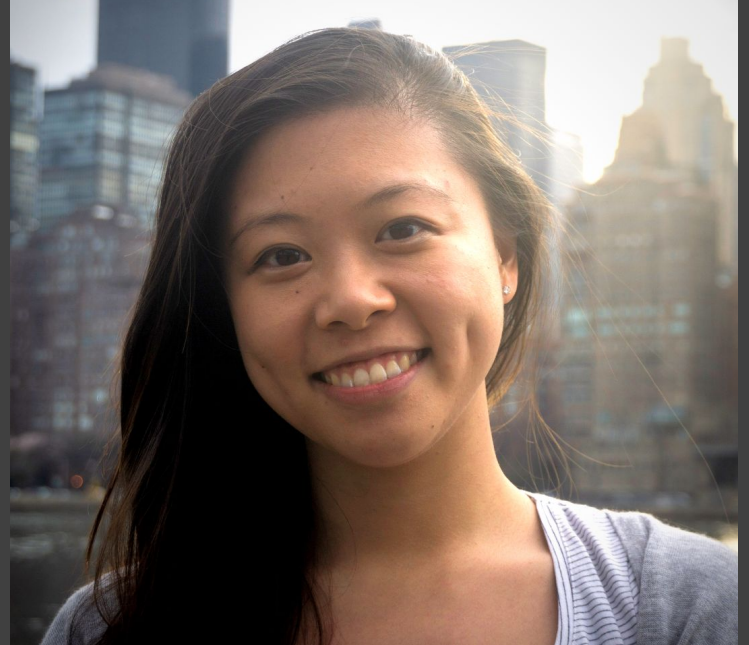


A Research Applications Manager engages external stakeholders to adapt research outputs for real-world use.

Research Applications Management (RAM)

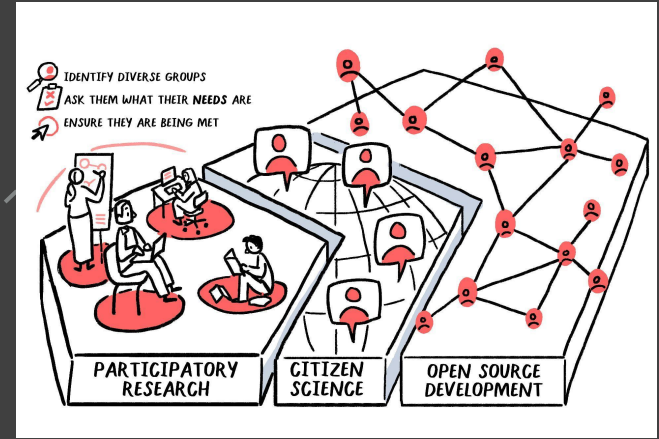
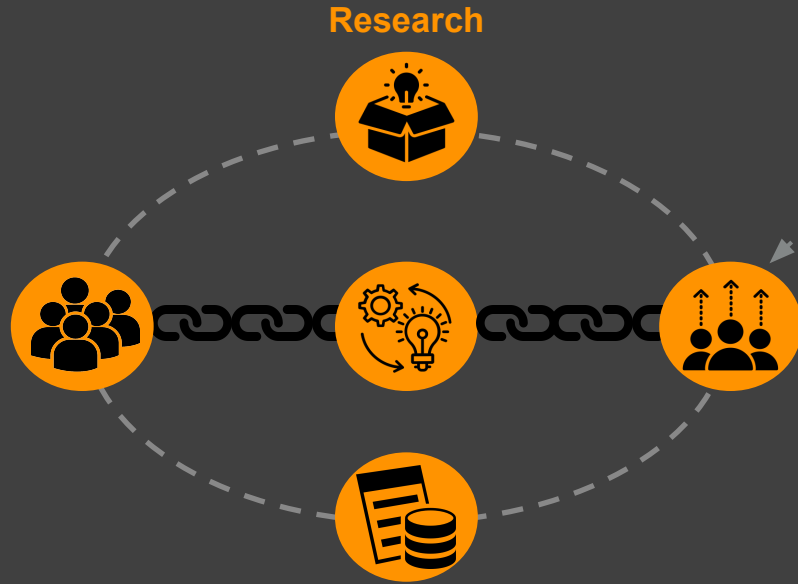
*RAMs make research outputs to be more **usable and support their adoption** by people outside of academia.*

*Working with research teams, we **embed user needs and real-world impact potential** in the design of research outputs.*



Jennifer Ding

Participatory Citizen Science



Citizen Scientists **engage the public** in **doing research**. They bring a diverse set of practices ranging from **crowdsourcing over co-creation to co-leadership**.

Citizen Science Practitioner

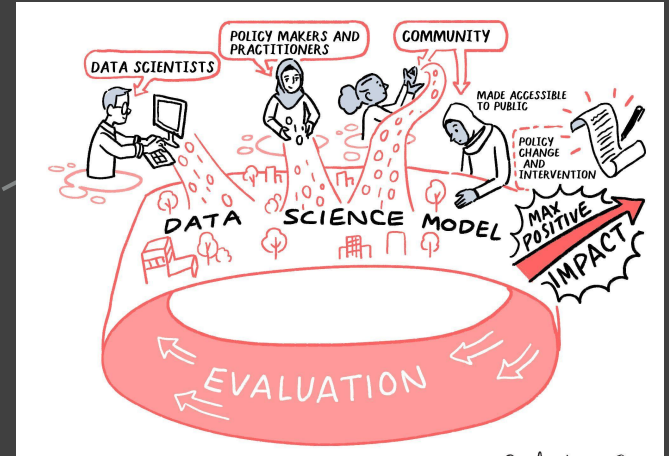
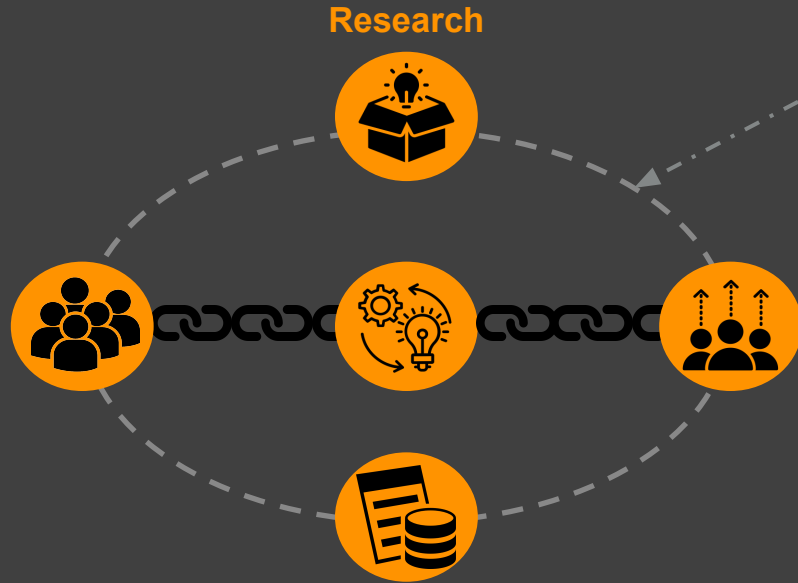
We are a community of *informal or non-professional community researchers* who frame and operationalise research in the real-world contexts.

We *connect academic and informal researchers* to ensure research is done ethically & *supports the real needs of those affected* by the research outputs.



Bastian Greshake Tzovaras

Research Ethicist



An ethicist studies the **ethical implications** of research and innovation projects, especially in their **applications in society** and shares practices that **make research responsible**.

Research Ethicist

*Research Ethicists conduct research to **understand the ethical implications** of the use of [AI] systems and data-driven technologies in society.*

*We explore ways to **enhance public participation and deliberate ethical guidelines** for the use of these systems.*

*We **provide training and resources** for ethics and responsible research and innovation.*



Claudia Fischer

Research Ethics Manager

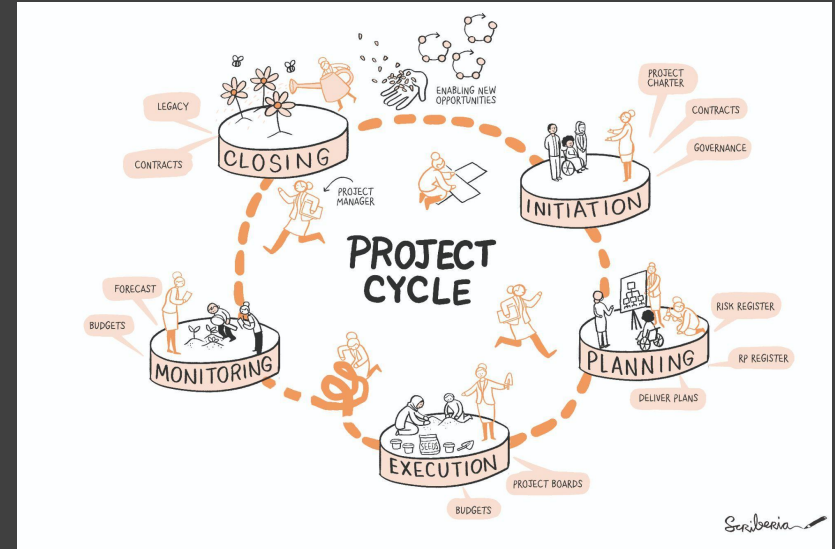
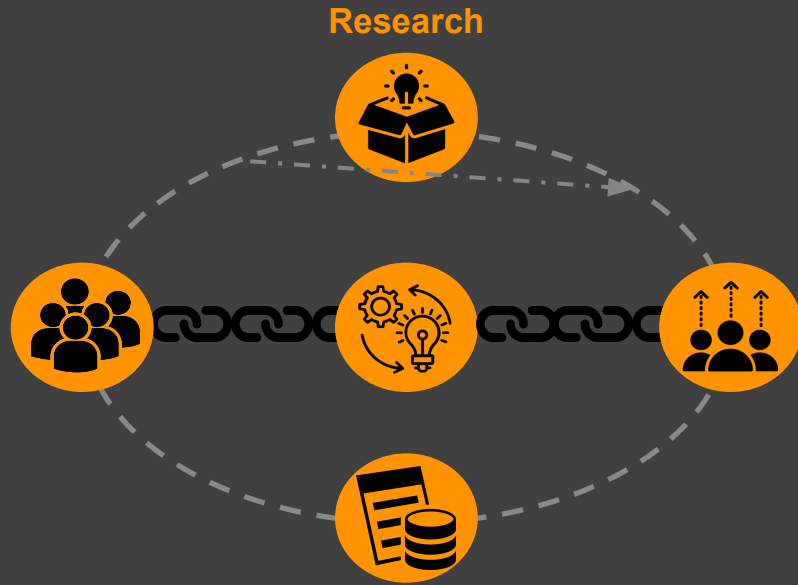
*Research Ethics Managers ensure that the **guidances on data and [AI] ethics, and open science are applied** to the Institute's research.*

*We identify **potential improvements to the system**, develop trainings on ethics approval and **recruit diverse members on ethics review panel and decision-making**.*

*We **manage each application's journey** from submission to review to approval decision, and **provide feedback on ethics applications**.*

Victoria Kwan

Research Project Management



*Research Programme/Project Managers ensure all project cycles are **executed on time**, following the **agreed protocols** and in line with the **Institute's policies**.*

Research Project Manager

*Research Project Managers ensure that the **projects are delivered on time and within budget.***

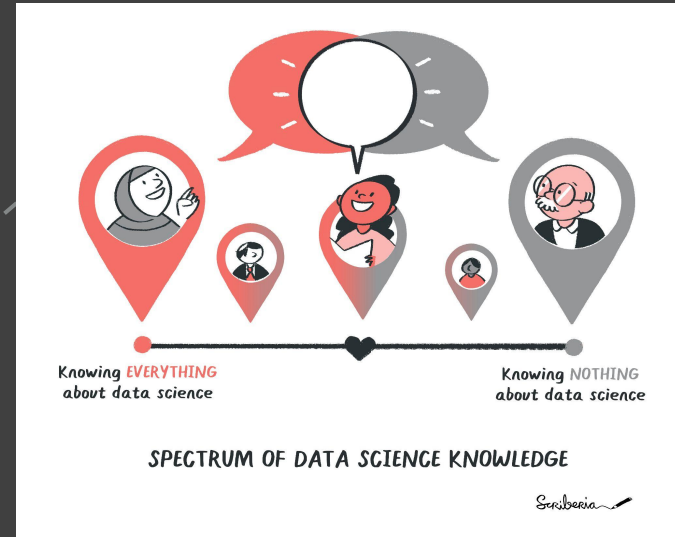
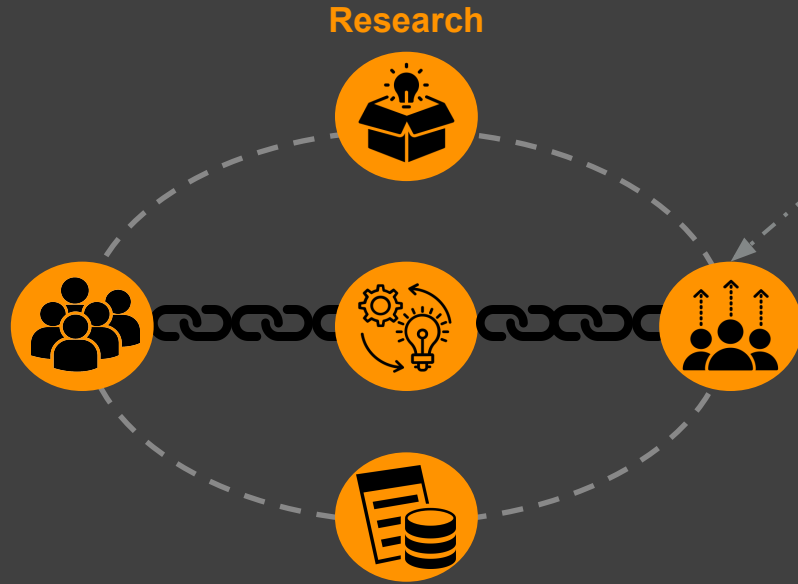
*We ensure that everyone involved in the project **comply with The Institute's processes and policies.***

*We manage the project **budget, and support the documentation, reports and governance.***



Alexandra Araujo Alvarez

Skills Officer



A Skills Officer works with subject matter experts to implement **collaborative design, development and delivery** of [data] skills opportunities and learning resources.

Skills Officer

*Skills Officers support individuals, teams or organisations in **learning new methodologies** and applying them in their own projects. We **provide training and resources** for the general public.*

*I lead the Data Science and AI Educators' Programme, which is aimed at **upskilling** HE educators in essential **teaching pedagogy**, both more widely and specific to their role as Data Science and AI educators.*



Ayesha Magill

End of Examples

