

University of Nebraska - Lincoln

DigitalCommons@University of Nebraska - Lincoln

Faculty Papers and Publications in Animal
Science

Animal Science Department

8-11-2023

DNA methylation networks underlying mammalian traits

Amin Haghani

Follow this and additional works at: <https://digitalcommons.unl.edu/animalscifacpub>



Part of the [Genetics and Genomics Commons](#), and the [Meat Science Commons](#)

This Article is brought to you for free and open access by the Animal Science Department at DigitalCommons@University of Nebraska - Lincoln. It has been accepted for inclusion in Faculty Papers and Publications in Animal Science by an authorized administrator of DigitalCommons@University of Nebraska - Lincoln.



RESEARCH ARTICLE SUMMARY

EVOLUTIONARY BIOLOGY

DNA methylation networks underlying mammalian traits

Amin Haghani *et al.*

INTRODUCTION: Comparative epigenomics is an emerging field that combines epigenetic signatures with phylogenetic relationships to elucidate species characteristics such as maximum life span. For this study, we generated cytosine DNA methylation (DNAm) profiles ($n = 15,456$) from 348 mammalian species using a methylation array platform that targets highly conserved cytosines.

RATIONALE: Nature has evolved mammalian species of greatly differing life spans. To resolve the relationship of DNAm with maximum

life span and phylogeny, we performed a large-scale cross-species unsupervised analysis. Comparative studies in many species enables the identification of epigenetic correlates of maximum life span and other traits.

RESULTS: We first tested whether DNAm levels in highly conserved cytosines captured phylogenetic relationships among species. We constructed phyloepigenetic trees that paralleled the traditional phylogeny. To avoid potential confounding by different tissue types, we generated tissue-specific phyloepigenetic trees. The

high phyloepigenetic-phylogenetic congruence is due to differences in methylation levels that is not confounded by sequence conservation.

We then interrogated the extent to which DNA methylation associates with specific biological traits. We used an unsupervised weighted correlation network analysis (WGCNA) to identify clusters of highly correlated CpGs (comethylation modules). WGCNA identified 55 distinct comethylation modules, of which 30 were significantly associated with traits including maximum life span, adult weight, age, sex, human mortality risk, or perturbations that modulate murine life span.

Both the epigenome-wide association analysis (EWAS) and eigengene-based analysis identified methylation signatures of maximum life span, and most of these were independent of aging, presumably set at birth, and could be stable predictors of life span at any point in life. Several CpGs that are more highly methylated in long-lived species are located near *HOXL* subclass homeoboxes and other genes that play a role in morphogenesis and development. Some of these life span-related CpGs are located next to genes that are also implicated in our analysis of upstream regulators (e.g., *ASCL1* and *SMAD6*). CpGs with methylation levels that are inversely related to life span are enriched in transcriptional start site (TSS1) and promoter flanking (PromF4, PromF5) associated chromatin states. Genes located in chromatin state TSS1 are constitutively active and enriched for nucleic acid metabolic processes. This suggests that long-living species evolved mechanisms that maintain low methylation levels in these chromatin states that would favor higher expression levels of genes essential for an organism's survival.

The upstream regulator analysis of the EWAS of life span identified the pluripotency transcription factors *OCT4*, *SOX2*, and *NANOG*. Other factors, such as *POLII*, *CTCF*, *RAD21*, *YY1*, and *TAF1*, showed the strongest enrichment for negatively life span-related CpGs.

CONCLUSION: The phyloepigenetic trees indicate that divergence of DNA methylation profiles closely parallels that of genetics through evolution. Our results demonstrate that DNA methylation is subjected to evolutionary pressures and selection. The publicly available data from our Mammalian Methylation Consortium are a rich source of information for different fields such as evolutionary biology, developmental biology, and aging. ■

The complete list of authors and their affiliations is available in the full article online.

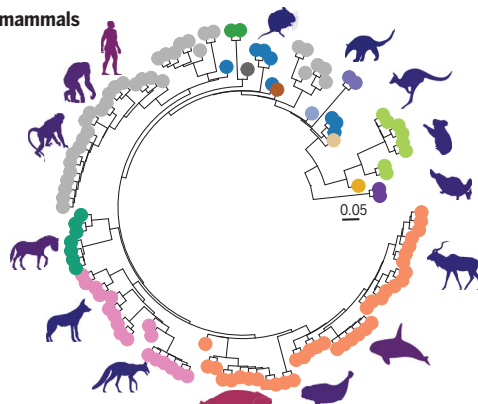
Corresponding author. Email: shorvath@mednet.ucla.edu (S.H.); ahaghani@altoslabs.com (A.H.)
Cite this article as A. Haghani *et al.*, *Science* 381, eabq5693 (2023). DOI: 10.1126/science.abq5693

READ THE FULL ARTICLE AT
<https://doi.org/10.1126/science.abq5693>

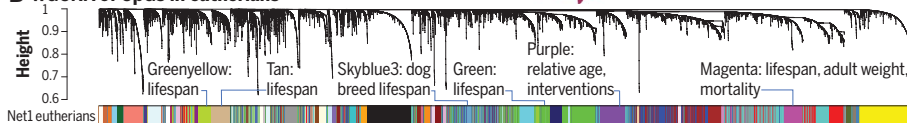
A Blood-based phyloepigenetic tree in mammals

Order

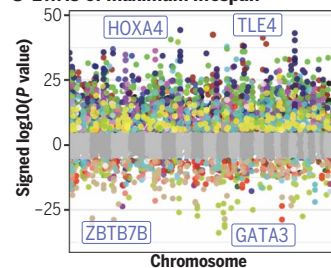
1. Primates
2. Proboscidea
3. Lagomorpha
4. Artiodactyla
5. Carnivora
6. Perissodactyla
9. Rodentia
10. Didelphimorphia
11. Diprotodontia
14. Sirenia
16. Tubulidentata
19. Hyracoidea
20. Pilosa
21. Monotremata



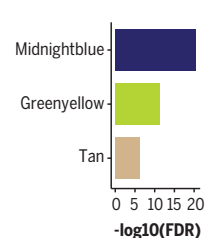
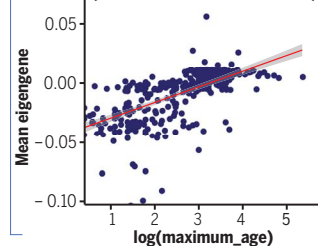
B WGCNA of CpGs in eutherians



C EWAS of maximum lifespan



Module enrichment EWAS of lifespan

D Midnight module (corr. = 0.63, P = 1.5 x 10⁻³⁹)

DNAm network relates to mammalian phylogeny and traits. (A) Phyloepigenetic tree from the DNAm data generated from blood samples. (B) Unsupervised WGCNA networks identified 55 comethylation modules. (C) EWAS of log-transformed maximum life span. Each dot corresponds to the methylation levels of a highly conserved CpG. Shown is the log (base 10)-transformed P value (y axis) versus the human genome coordinate Hg19 (x axis). (D) Comethylation module correlated with maximum life span of mammals. Eigengene (first principal component of scaled CpGs in the midnightblue module) versus log (base e) transformed maximum life span. Each dot corresponds to a different species.

RESEARCH ARTICLE

EVOLUTIONARY BIOLOGY

DNA methylation networks underlying mammalian traits

Amin Haghani^{1,2,*}, Caesar Z. Li^{3,4,†}, Todd R. Robeck⁵, Joshua Zhang¹, Ake T. Lu^{1,2}, Julia Ablaeva⁶, Victoria A. Acosta-Rodríguez⁷, Danielle M. Adams⁸, Abdulaziz N. Alagaili⁹, Javier Almunia¹⁰, Ajoy Aloysius¹¹, Nabil M.S. Amor¹², Reza Ardehali¹³, Adriana Arneson^{14,15}, C. Scott Baker¹⁶, Gareth Banks¹⁷, Katherine Belov¹⁸, Nigel C. Bennett¹⁹, Peter Black²⁰, Daniel T. Blumstein^{21,22}, Eleanor K. Bors¹⁶, Charles E. Breeze²³, Robert T. Brooke²⁴, Janine L. Brown²⁵, Gerald Carter²⁶, Alex Caulton^{27,28}, Julie M. Cavin²⁹, Lisa Chakrabarti³⁰, Ioulia Chatzistamou³¹, Andreas S. Chavez^{26,32}, Hao Chen³³, Kaiyang Cheng³⁴, Priscila Chiavellini³⁵, Oi-Wa Choi^{36,37}, Shannon Clarke²⁷, Joseph A. Cook³⁸, Lisa N. Cooper³⁹, Marie-Laurence Cossette⁴⁰, Joanna Day⁴¹, Joseph DeYoung^{36,37}, Stacy Dirocco⁴², Christopher Dold⁵, Jonathan L. Dunnum³⁸, Erin E. Ehmke⁴³, Candice K. Emmons⁴⁴, Stephan Emmrich⁶, Ebru Erbay^{45,46,47}, Claire Erlacher-Reid⁴², Chris G. Faulkes^{48,49}, Zhe Fei^{3,50}, Steven H. Ferguson^{51,52}, Vadim N. Gladyshev⁵³, Jennifer E. Flower⁵⁴, Jean-Michel Gaillard⁵⁵, Eva Garde⁵⁶, Livia Gerber^{57,58}, Matthew J. G. G. Goyas³⁵, Matthew J. Grant⁶⁰, Carla B. Green⁷, M. Bradley Hanson⁴⁴, Daniel W. Hart¹⁹, Martin Haulena⁶¹, Kelsey Herrick⁶², Andrew N. Hogan⁶³, Carolyn J. Hogg¹⁸, Timothy A. Hore⁶⁴, Taosheng Huang⁶⁵, Juan Carlos Izpisua Belmonte², Anna J. Jasinska^{36,66,67}, Gareth Jones⁶⁸, Eve Jourdain⁶⁹, Olga Kashpur⁷⁰, Harold Katcher⁷¹, Etsuko Katsumata⁷², Vimala Kaza⁷³, Hippokratiss Kiaris⁷⁴, Michael S. Kobor⁷⁵, Pawel Kordowitzki⁷⁶, William R. Koski⁷⁷, Michael Kritzen⁷⁸, Soo Bin Kwon^{15,14}, Brenda Larison^{21,79}, Sang-Goo Lee⁵⁹, Marianne Lehmann³⁵, Jean-François Lemaître⁵⁵, Andrew J. Levine⁸⁰, Xinmin Li⁸¹, Cun Li^{82,83}, Andrea R. Lim¹, David T. S. Lin⁸⁴, Dana M. Lindemann⁴², Schuyler W. Liphardt⁸⁵, Thomas J. Little⁸⁶, Nicholas Macoretta⁶, Dewey Maddox⁸⁷, Craig O. Matkin⁸⁸, Julie A. Mattison⁸⁹, Matthew McClure⁹⁰, June Mergl⁹¹, Jennifer J. Meudt⁹², Gisele A. Montano⁵, Khyobeni Mozhui⁹³, Jason Munshi-South⁹⁴, William J. Murphy^{95,96}, Asieh Naderi⁷⁴, Martina Nagy⁹⁷, Pritika Narayan⁶⁰, Peter W. Nathanielsz^{82,83}, Ngoc B. Nguyen¹³, Christof Niehrs^{98,99}, Batsaikhan Nyamsuren¹⁰⁰, Justine K. O'Brien⁴¹, Perrie O'Tierney Ginn⁷⁰, Duncan T. Odum^{101,102}, Alexander G. Ophir¹⁰³, Steve Osborn¹⁰⁴, Elaine A. Ostrander⁶³, Kim M. Parsons⁴⁴, Kimberly C. Paul⁸⁰, Amy B. Pedersen⁸⁶, Matteo Pellegrini¹⁰⁵, Katharina J. Peters^{78,106}, Jessica L. Petersen¹⁰⁷, Darren W. Pietersen¹⁰⁸, Gabriela M. Pinho²¹, Jocelyn Plassais⁶³, Jesse R. Poganik⁵⁹, Natalia A. Prado^{109,110}, Pradeep Reddy^{111,2}, Benjamin Rey⁵⁵, Beate R. Ritz^{112,113,80}, Jooke Robbins¹¹⁴, Magdalena Rodriguez¹¹⁵, Jennifer Russell¹⁰⁴, Elena Rydkina⁶, Lindsay L. Sailer¹⁰³, Adam B. Salmon¹¹⁶, Akshay Sanghavi⁷¹, Kyle M. Schachtschneider^{117,118,119}, Dennis Schmitt¹²⁰, Todd Schmitt⁶², Lars Schomacher⁹⁸, Lawrence B. Schook^{117,121}, Karen E. Sears²¹, Ashley W. Seifert¹¹, Aaron B.A. Shafer¹²², Anastasia V. Shindypina⁵⁹, Melanie Simmons⁴³, Kavita Singh¹²³, Ishani Sinha²¹, Jesse Slone⁶⁵, Russel G. Snell⁶⁰, Elham Soltanmohammadi⁷⁴, Matthew L. Spangler¹⁰⁷, Maria Spriggs²⁰, Lydia Staggs⁴², Nancy Stedman²⁰, Karen J. Steinman¹²⁴, Donald T. Stewart¹²⁵, Victoria J. Sugrue⁶⁴, Balazs Szaladovits¹²⁶, Joseph S. Takahashi^{7,127}, Masaki Takasugi⁶, Emma C. Teeling¹²⁸, Michael J. Thompson¹⁰⁵, Bill Van Bonn¹²⁹, Sonja C. Vermees^{130,131}, Diego Villar¹³², Harry V. Vinters¹³³, Ha Vu^{14,15}, Mary C. Wallingford⁷⁰, Nan Wang^{36,37}, Gerald S. Wilkinson⁸, Robert W. Williams¹³⁴, Qi Yan^{3,2}, Mingjia Yao³, Brent G. Young⁵², Bohan Zhang⁵⁹, Zhihui Zhang⁶, Yang Zhao⁶, Peng Zhao^{13,135}, Wanding Zhou^{136,137}, Joseph A. Zoller³, Jason Ernst^{14,15}, Andrei Seluanov¹³⁸, Vera Gorbunova¹³⁸, X. William Yang^{36,37}, Ken Raj¹³⁹, Steve Horvath^{1,2,139,*}

Using DNA methylation profiles ($n = 15,456$) from 348 mammalian species, we constructed phyloepigenetic trees that bear marked similarities to traditional phylogenetic ones. Using unsupervised clustering across all samples, we identified 55 distinct cytosine modules, of which 30 are related to traits such as maximum life span, adult weight, age, sex, and human mortality risk. Maximum life span is associated with methylation levels in *HOXL* subclass homeobox genes and developmental processes and is potentially regulated by pluripotency transcription factors. The methylation state of some modules responds to perturbations such as caloric restriction, ablation of growth hormone receptors, consumption of high-fat diets, and expression of Yamanaka factors. This study reveals an intertwined evolution of the genome and epigenome that mediates the biological characteristics and traits of different mammalian species.

Comparative epigenomics is a burgeoning field that integrates epigenetic signatures with phylogenetic relationships to decipher gene-to-trait functions (1–3). Prior research has investigated the cap-

acity of DNA methylation (DNAm) patterns in regulatory sequences to reflect evolutionary relationships among species (3, 4). A recent study compared methylation data across multiple animal species at orthologous gene promoters

using a sequencing-based assay that did not specifically target conserved CpGs (4). Previous investigations faced limitations regarding the measurement platform, particularly the low sequencing depth at conserved CpGs and the sample size per species.

Our study overcomes these constraints in several ways. First, we used a measurement platform ensuring high effective sequencing depth at conserved CpGs, allowing for a more precise analysis of DNAm patterns in highly conserved DNA regions. Second, we increased the sample size per species, aiming for many samples per species. We profiled 348 species from 25 of the 26 mammalian taxonomic orders. This comprehensive dataset enables examination of phylogenetic relationships, comethylation relationships between cytosines, and their associations with maximum life span and other species characteristics.

We profiled 15,456 samples (Fig. 1A and table S1) using a methylation array platform that provides effective sequencing depth at highly conserved CpGs across mammalian species (5). This dataset is the product of the multinational Mammalian Methylation Consortium. In previous studies, we applied supervised machine learning methods to generate DNAm-based predictors of age called epigenetic clocks for numerous species (6–31).

Here, we performed a large-scale cross-species unsupervised analysis of the entire dataset to reveal the relationship of DNAm with mammalian phylogeny. We show that we could construct phyloepigenetic trees that parallel traditional phylogenetic ones. We then proceed to interrogate the extent to which DNAm underpins specific biological traits by using unsupervised weighted correlation network analysis (WGCNA) to minimize the influence of bias on our observations. This approach identifies modules (clusters) of comethylated CpGs comethylation that are associated with species characteristics, including taxonomy, tissue type, sex, life span, and aging.

Results

Evolution and DNAm

We generated a dataset consisting of DNAm profiles of 15,456 DNA samples derived from 70 tissue types from 348 mammalian species using the mammalian methylation array (5). We evaluated whether methylation levels of cytosines (CpGs) in DNA sequences that are conserved across species would allow us to construct what could be called a phyloepigenetic tree. To avoid potential confounding by different tissue types, we generated tissue-specific phyloepigenetic trees (Fig. 1B and figs. S2 and S3). We defined the “congruence” between traditional phylogenetic trees and phyloepigenetic trees as the Pearson correlation coefficient between distances (branch length) based on phyloepigenetic trees and evolutionary

distances in traditional phylogenetic trees. We observed high congruence (0.93) (Fig. 1C and fig. S2) for the blood-based phyloepigenetic tree (124 species) and lower congruence values for nonblood tissues (congruence = 0.58 for liver and 0.72 for skin; fig. S2). The lower con-

gruence in liver (158 species) and skin (133 species) may have been due to potential variability in sampling between species. The varying congruence across tissue types shows that the CpG probes do not serve as genotyping proxies. The tissue dependence of congruence

indicates that phyloepigenetic trees are derived based on differences in methylation levels and not sequence conservation. This point was also corroborated by three sensitivity analyses, which confirmed that the high congruence was indeed due to differences in methylation levels

¹Department of Human Genetics, David Geffen School of Medicine, University of California Los Angeles, Los Angeles, CA, USA. ²Altos Labs, San Diego, CA, USA. ³Department of Biostatistics, Fielding School of Public Health, University of California Los Angeles, Los Angeles, CA, USA. ⁴Janssen Research & Development, Spring House, PA, USA. ⁵Zoological Operations, SeaWorld Parks and Entertainment, Orlando, FL, USA. ⁶Department of Biology, University of Rochester, Rochester, NY, USA. ⁷Department of Neuroscience, Peter O'Donnell Jr. Brain Institute, University of Texas Southwestern Medical Center, Dallas, TX, USA. ⁸Department of Biology, University of Maryland, College Park, MD, USA. ⁹Department of Zoology, College of Science, King Saud University, Riyadh, Saudi Arabia. ¹⁰Loro Parque Fundación, Avenida Loro Parque, Puerto de la Cruz, Tenerife, Spain. ¹¹Department of Biology, University of Kentucky, Lexington, KY, USA. ¹²Laboratory of Biodiversity, Parasitology, and Ecology, University of Tunis El Manar, Tunis, Tunisia. ¹³Division of Cardiology, Department of Internal Medicine, David Geffen School of Medicine, University of California, Los Angeles, Los Angeles, CA, USA. ¹⁴Bioinformatics Interdepartmental Program, University of California, Los Angeles, CA, USA. ¹⁵Department of Biological Chemistry, University of California, Los Angeles, Los Angeles, CA, USA. ¹⁶Marine Mammal Institute, Oregon State University, Newport, OR, USA. ¹⁷Mammalian Genetics Unit, MRC Harwell Institute, Harwell Science and Innovation Campus, Oxfordshire, UK. ¹⁸School of Life and Environmental Sciences, The University of Sydney, Sydney, New South Wales, Australia. ¹⁹Department of Zoology and Entomology, University of Pretoria, Hatfield, South Africa. ²⁰Busch Gardens Tampa, Tampa, FL, USA. ²¹Department of Ecology and Evolutionary Biology, University of California Los Angeles, Los Angeles, CA, USA. ²²The Rocky Mountain Biological Laboratory, Crested Butte, CO, USA. ²³Altius Institute for Biomedical Sciences, Seattle, WA, USA. ²⁴Epigenetic Clock Development Foundation, Los Angeles, CA, USA. ²⁵Center for Species Survival, Smithsonian National Zoo and Conservation Biology, Front Royal, VA, USA. ²⁶Department of Evolution, Ecology and Organismal Biology, The Ohio State University, Columbus, OH, USA. ²⁷AgResearch, Invermay Agricultural Centre, Mosgiel, Otago, New Zealand. ²⁸Department of Biochemistry, University of Otago, Dunedin, Otago, New Zealand. ²⁹Gulf World Marine Park - Dolphin Company, Panama City Beach, FL, USA. ³⁰School of Veterinary Medicine and Science, University of Nottingham, Nottingham, UK. ³¹Department of Pathology, Microbiology & Immunology, School of Medicine, University of South Carolina, Columbia, SC, USA. ³²Translational Data Analytics Institute, The Ohio State University, Columbus, OH, USA. ³³Department of Pharmacology, Addiction Science and Toxicology, The University of Tennessee Health Science Center, Memphis, TN, USA. ³⁴Medical Informatics, David Geffen School of Medicine, University of California, Los Angeles, Los Angeles, CA, USA. ³⁵Biochemistry Research Institute of La Plata, Histology and Pathology, School of Medicine, University of La Plata, La Plata, Argentina. ³⁶Center for Neurobehavioral Genetics, Semel Institute for Neuroscience and Human Behavior, University of California, Los Angeles, Los Angeles, CA, USA. ³⁷Department of Psychiatry and Biobehavioral Sciences, David Geffen School of Medicine, University of California Los Angeles, Los Angeles, CA, USA. ³⁸University of New Mexico, Department of Biology and Museum of Southwestern Biology, Albuquerque, NM, USA. ³⁹Department of Anatomy and Neurobiology, Northeast Ohio Medical University, Rootstown, OH, USA. ⁴⁰Department of Environmental & Life Sciences, Trent University, Peterborough, Ontario, Canada. ⁴¹Taronga Institute of Science and Learning, Taronga Conservation Society Australia, Mosman, New South Wales, Australia. ⁴²SeaWorld Orlando, Orlando, FL, USA. ⁴³Duke Lemur Center, Durham, NC, USA. ⁴⁴Conservation Biology Division, Northwest Fisheries Science Center, National Marine Fisheries Service, National Oceanic and Atmospheric Administration, Seattle, WA, USA. ⁴⁵Altos Labs, Bay Area Institute of Science, Redwood City, CA, USA. ⁴⁶Department of Cardiology, Smidt Heart Institute, Cedars-Sinai Medical Center, Los Angeles, CA, USA. ⁴⁷David Geffen School of Medicine, University of California, Los Angeles, CA, USA. ⁴⁸School of Biological and Chemical Sciences, Queen Mary University of London, London, UK. ⁴⁹School of Biological and Behavioural Sciences, Queen Mary University of London, London, UK. ⁵⁰Department of Statistics, University of California, Riverside, CA, USA. ⁵¹Department of Biological Sciences, University of Manitoba, Winnipeg, Manitoba, Canada. ⁵²Fisheries and Oceans Canada, Winnipeg, Manitoba, Canada. ⁵³Department of Population Health and Reproduction, University of California, Davis School of Veterinary Medicine, Davis, CA, USA. ⁵⁴Mystic Aquarium, Mystic, CT, USA. ⁵⁵University of Lyon, CNRS, Laboratoire de Biométrie et Biologie Evolutive, Villeurbanne, France. ⁵⁶Greenland Institute of Natural Resources, Nuuk, Greenland. ⁵⁷School of Biological, Earth and Environmental Sciences, University of New South Wales, Sydney, New South Wales, Australia. ⁵⁸Australian National Wildlife Collection, CSIRO, Canberra, Australia. ⁵⁹Division of Genetics, Department of Medicine, Brigham and Women's Hospital, Harvard Medical School, Boston, MA, USA. ⁶⁰Applied Translational Genomics Group, School of Biological Sciences, Centre for Brain Research, The University of Auckland, Auckland, New Zealand. ⁶¹Vancouver Aquarium, Vancouver, British Columbia, Canada. ⁶²SeaWorld San Diego, San Diego, CA, USA. ⁶³Cancer Genetics and Comparative Genomics Branch, National Human Genome Research Institute, National Institutes of Health, Bethesda, MD, USA. ⁶⁴Department of Anatomy, University of Otago, Dunedin, New Zealand. ⁶⁵Division of Human Genetics, Department of Pediatrics, University at Buffalo, Buffalo, NY, USA. ⁶⁶Division of Infectious Diseases, Department of Medicine, School of Medicine, University of Pittsburgh, Pittsburgh, PA, USA. ⁶⁷Department of Molecular Genetics, Institute of Biorganic Chemistry, Polish Academy of Sciences, Poznan, Poland. ⁶⁸School of Biological Sciences, University of Bristol, Bristol, UK. ⁶⁹Norwegian Orca Survey, Andenes, Norway. ⁷⁰Mother Infant Research Institute, Tufts Medical Center, Boston, MA, USA. ⁷¹Yuvan Research, Mountain View, CA, USA. ⁷²Kamogawa Sea World, Kamogawa, Chiba, Japan. ⁷³Peromyscus Genetic Stock Center, University of South Carolina, Columbia, SC, USA. ⁷⁴Department of Drug Discovery and Biomedical Sciences, College of Pharmacy, University of South Carolina, Columbia, SC, USA. ⁷⁵Edwin S. H. Leong Healthy Aging Program, Centre for Molecular Medicine and Therapeutics, University of British Columbia, Vancouver, British Columbia, Canada. ⁷⁶Institute of Veterinary Medicine, Nicolaus Copernicus University, Torun, Poland. ⁷⁷LGL Limited, King City, Ontario, Canada. ⁷⁸Evolutionary Genetics Group, Department of Anthropology, University of Zurich, Zurich, Switzerland. ⁷⁹Center for Tropical Research, Institute of the Environment and Sustainability, University of California, Los Angeles, Los Angeles, CA, USA. ⁸⁰Department of Neurology, David Geffen School of Medicine, University of California, Los Angeles, Los Angeles, CA, USA. ⁸¹Technology Center for Genomics and Bioinformatics, Department of Pathology and Laboratory Medicine, University of California, Los Angeles, Los Angeles, CA, USA. ⁸²Texas Pregnancy and Life-course Health Center, Southwest National Primate Research Center, San Antonio, TX, USA. ⁸³Department of Animal Science, College of Agriculture and Natural Resources, Laramie, WY, USA. ⁸⁴Centre for Molecular Medicine and Therapeutics, BC Children's Hospital Research Institute, University of British Columbia, Vancouver, British Columbia, Canada. ⁸⁵Biology Department, University of New Mexico, Albuquerque, NM, USA. ⁸⁶Institute of Ecology and Evolution, School of Biological Sciences, University of Edinburgh, Edinburgh, UK. ⁸⁷White Oak Conservation Center, Yulee, FL, USA. ⁸⁸North Gulf Oceanic Society, Homer, AK, USA. ⁸⁹Translational Gerontology Branch, National Institute on Aging Intramural Research Program, National Institutes of Health, Baltimore, MD, USA. ⁹⁰ABS Global, DeForest, WI, USA. ⁹¹Marineland of Canada, Niagara Falls, Ontario, Canada. ⁹²Biomedical and Genomic Research Group, Department of Animal and Dairy Sciences, University of Wisconsin Madison, Madison, WI, USA. ⁹³Department of Preventive Medicine, University of Tennessee Health Science Center, College of Medicine, Memphis, TN, USA. ⁹⁴Louis Calder Center - Biological Field Station, Department of Biological Sciences, Fordham University, Armonk, NY, USA. ⁹⁵Veterinary Integrative Biosciences, Texas A&M University, College Station, TX, USA. ⁹⁶Interdisciplinary Program in Genetics and Genomics, Texas A&M University, College Station, TX, USA. ⁹⁷Museum für Naturkunde, Leibniz-Institute for Evolution and Biodiversity Science, Berlin, Germany. ⁹⁸Institute of Molecular Biology (IMB), Mainz, Germany. ⁹⁹Division of Molecular Embryology, DKFZ-ZMBH Alliance, Heidelberg, Germany. ¹⁰⁰Mammalogical Society of Mongolia, Ulaanbaatar, Mongolia. ¹⁰¹Cancer Research UK Cambridge Institute, University of Cambridge, Cambridge, UK. ¹⁰²Deutsches Krebsforschungszentrum, Division of Regulatory Genomics and Cancer Evolution, Heidelberg, Germany. ¹⁰³Department of Psychology, Cornell University, Ithaca, NY, USA. ¹⁰⁴SeaWorld San Antonio, San Antonio, TX, USA. ¹⁰⁵Department Molecular Cell and Developmental Biology, University of California, Los Angeles, Los Angeles, CA, USA. ¹⁰⁶School of Earth, Atmospheric and Life Sciences, University of Wollongong, Wollongong, New South Wales, Australia. ¹⁰⁷Department of Animal Science, University of Nebraska, Lincoln, NE, USA. ¹⁰⁸Mammal Research Institute, Department of Zoology and Entomology, University of Pretoria, Hatfield, South Africa. ¹⁰⁹Department of Biology, College of Arts and Science, Adelphi University, Garden City, NY, USA. ¹¹⁰Center for Species Survival, Smithsonian Conservation Biology Institute, Front Royal, VA, USA. ¹¹¹Salk Institute for Biological Studies, La Jolla, CA, USA. ¹¹²Department of Epidemiology, UCLA Fielding School of Public Health, Los Angeles, CA, USA. ¹¹³Department of Environmental Health Sciences, UCLA Fielding School of Public Health, Los Angeles, CA, USA. ¹¹⁴Center for Coastal Studies, Provincetown, MA, USA. ¹¹⁵Miami Seaquarium, Miami, FL, USA. ¹¹⁶The Sam and Ann Barshop Institute for Longevity and Aging Studies and Department of Molecular Medicine, UT Health San Antonio, and the Geriatric Research Education and Clinical Center, South Texas Veterans Healthcare System, San Antonio, TX, USA. ¹¹⁷Department of Radiology, University of Illinois at Chicago, Chicago, IL, USA. ¹¹⁸Department of Biochemistry and Molecular Genetics, University of Illinois at Chicago, Chicago, IL, USA. ¹¹⁹National Center for Supercomputing Applications, University of Illinois at Urbana-Champaign, Urbana, IL, USA. ¹²⁰College of Agriculture, Missouri State University, Springfield, MO, USA. ¹²¹Department of Animal Sciences, University of Illinois at Urbana-Champaign, Urbana, IL, USA. ¹²²Department of Forensic Science, Environmental & Life Sciences, Trent University, Peterborough, Ontario, Canada. ¹²³Shobhaben Pratapbhai Patel School of Pharmacy & Technology Management, SVKM'S NMIMS University, Mumbai, India. ¹²⁴Species Preservation Laboratory, SeaWorld San Diego, San Diego, CA, USA. ¹²⁵Biology Department, Acadia University, Wolfville, Nova Scotia, Canada. ¹²⁶Department of Pathobiology and Population Sciences, Royal Veterinary College, Hatfield, UK. ¹²⁷Howard Hughes Medical Institute, Department of Neuroscience, University of Texas Southwestern Medical Center, Dallas, TX, USA. ¹²⁸School of Biology and Environmental Science, University College Dublin, Belfield, Dublin, Ireland. ¹²⁹Animal Care and Science Division, John G. Shedd Aquarium, Chicago, IL, USA. ¹³⁰School of Biology, The University of St. Andrews, Fife, UK. ¹³¹Neurogenetics of Vocal Communication Group, Max Planck Institute for Psycholinguistics, Nijmegen, Netherlands. ¹³²Blizard Institute, Faculty of Medicine and Dentistry, Queen Mary University of London, London, UK. ¹³³Department of Pathology and Laboratory Medicine, David Geffen School of Medicine, University of California Los Angeles, Los Angeles, CA, USA. ¹³⁴Department of Genetics, Genomics and Informatics, University of Tennessee Health Science Center, College of Medicine, Memphis, TN, USA. ¹³⁵Eli and Edythe Broad Center of Regenerative Medicine and Stem Cell Research, University of California, Los Angeles, Los Angeles, CA, USA. ¹³⁶Center for Computational and Genomic Medicine, Children's Hospital of Philadelphia, Philadelphia, PA, USA. ¹³⁷Department of Pathology and Laboratory Medicine, University of Pennsylvania, Philadelphia, PA, USA. ¹³⁸Departments of Biology and Medicine, University of Rochester, Rochester, NY, USA. ¹³⁹Altos Labs, Cambridge, UK.

*Corresponding author. Email: shorvath@mednet.ucla.edu (S.H.); ahaghani@altoslabs.com (A.H.)

†These authors contributed equally to this work.

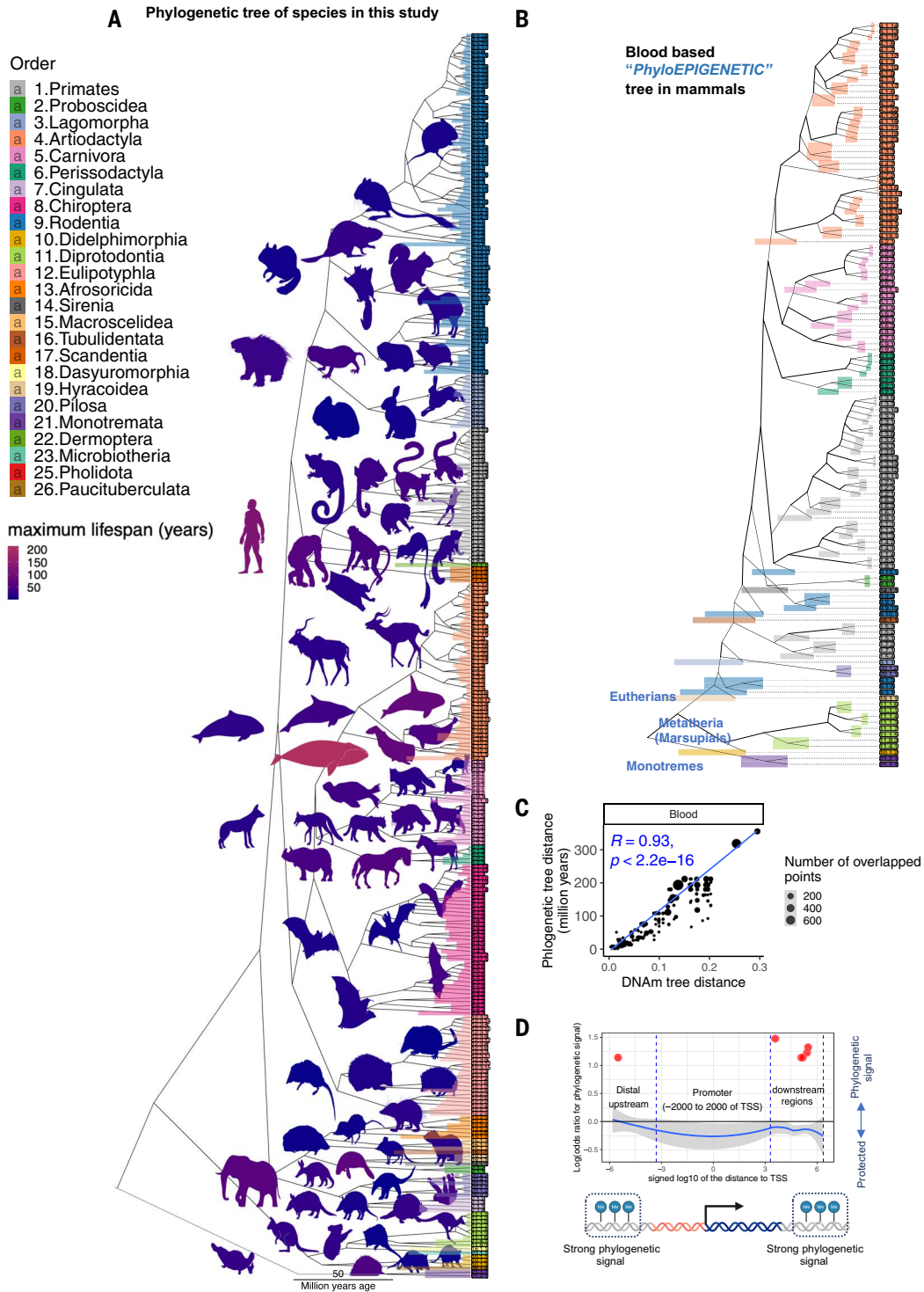


Fig. 1. Phyloepigenetic trees parallel the mammalian evolutionary tree. (A) The traditional phylogenetic tree from the TimeTree database (44) based on 321 (of 348) species in our study. A full description of the species in our study is reported in table S1. **(B)** Blood-based phyloepigenetic tree created from hierarchical clustering of DNAm data in this study (for additional analysis, see fig. S3, A and B). We formed the mean value per cytosine across samples for each species. The clustering used 1 minus the Pearson correlation (1-cor) as a pairwise dissimilarity measure and the average linkage method as intergroup dissimilarity. Phyloepigenetic trees for skin and liver can be found in fig. S2. Additional analyses, e.g., involving different choices of CpGs or intergroup dissimilarity measures, are reported in the supplementary

materials (fig. S2). The colored bars reflect the branch height. **(C)** Scatter plot of the distances in blood phyloepigenetic (1-cor) versus the traditional evolutionary tree. **(D)** Scatter plots displaying the log-odds ratios of regions exhibiting phylogenetic signals relative to the TSS are presented. The phylogenetic signal is determined using Blomberg's K statistic (32). In this analysis, CpGs were grouped into categories using sliding windows relative to the TSS. To assess enrichment, the Fisher's exact overlap test was used, focusing on the top 500 CpGs displaying phylogenetic signals within each region. The red dots highlight the regions with the Fisher's exact P value < 0.05 . The results indicate notable enrichment ($OR > 3$) in certain intergenic and genic regions but not in promoters. For additional analysis, see fig. S4.

(see the supplementary text). In particular, the phyloepigenetic trees based on the 180 CpGs with the most significant detection P values across all 348 species still are congruent with traditional trees (fig. S2, F and G).

To identify CpGs that exhibit a pronounced phylogenetic signal in relation to methylation and phylogenetic trees, we used Blomberg's K statistic (32). Among the top 500 CpGs showing significant phylogenetic signals (nominal Blomberg $P < 0.001$, selected by variance z score), we observed an enrichment in upstream intergenic regions [odds ratio (OR) = 1.4, Fisher's exact $P < 0.05$; fig. S4B]. To further investigate regions with the strongest phylogenetic signal, we divided the data into groups relative to the transcriptional start sites (TSSs). This analysis also confirmed that intergenic regions exhibit significant phylogenetic signals (OR > 3 , Fisher's exact $P < 0.05$), whereas the promoter regions did not show such signals (Fig. 1D).

DNA networks relate to individual and species traits

We used signed WGCNA, an unsupervised analysis (33), to cluster CpGs with similar methylation dynamics across samples into comethylation modules. We then summarized their methylation profiles as "module eigengenes." The respective eigengenes of these modules were used to identify their potential correlations with various traits within and across mammalian species.

Our data analysis proceeded in two sequential phases. First, we developed several comethylation networks using data from 11,099 DNA samples from 174 species (discovery dataset finalized March 2021). A eutherian network [network 1 (Net1)] was formed from 14,705 conserved CpGs using this dataset (Fig. 2A). Later, we generated a second dataset of 4357 samples from 30 tissues of 240 mammalian species (174 new species and 66 that are represented in the discovery set), which were not used to define modules and were used as an independent validation set. All eutherian modules were present in the independent validation dataset according to module preservation statistics (corKME) (34), validating the presence of these modules (corKME > 0.43 , $P < 10^{-22}$; median corKME = 0.84) (fig. S5). These modules were designated with colors according to WGCNA convention (Fig. 2A). The smallest module (lavenderblush3) consisted of 33 CpGs and the largest (turquoise) had 1864 CpGs.

To characterize the 55 modules with respect to species characteristics (e.g., maximum life span and average adult weight), module eigengenes were calculated in all samples (discovery and validation set combined, 331 eutherian species). Because information on taxonomic order, tissues, maximum life span, age, sex and adult weight of each species was available,

we were able to assess whether any of the module eigengenes correlated with these traits. Of the 55 modules, 30 were found to be correlated with at least one trait (Fig. 2B, fig. S7, and table S3). Specifically, 15 modules were related to taxonomic orders such as primates, rodents, or carnivores (Fig. 2B and fig. S11). Ten modules related to tissue type (fig. S11), two to sex (fig. S11), one to age, seven to maximum life span, and four to average adult species weight. Some modules were related to multiple characteristics. In the following sections, we mainly focus on the modules that relate to mammalian maximum life span, adult weight, and age. Other modules related to taxonomic order, tissue type, and sex are described in the supplementary materials (fig. S11). We performed two analyses to ascertain whether these eutherian modules are also applicable to marsupials and monotremes. Using the discovery dataset, we first trained a network (Net2) in both eutherians and marsupials based on only 7956 probes that are mappable to both. The color bands under the hierarchical tree reveal that all the Net1 modules were also preserved in Net2 (Fig. 2A). Second, we selected CpGs in Net1 modules that were also mapped to marsupials or monotremes and confirmed that their eigengene relationships to primary traits were retained in these mammalian clades (table S3). For example, the magenta module, which is related to blood in eutherians, was also found to be so in monotremes (table S3), which confirms that the Net1 modules can indeed be applied to other mammalian clades by selecting probes that are also mapped to those clades.

A functional enrichment study, accounting for the mammalian array background, revealed that the genes neighboring to module CpGs are implicated in many biological processes including development, immune function, metabolism, reproduction, stem cell biology, stress responses, aging, and various signaling pathways (Fig. 2C and fig. S9).

Relationship with protein-protein interactions

We investigated whether the proteins encoded by cognate genes (closest to respective CpGs) within modules are known to mutually interact or predicted to do so by STRING protein-protein interaction networks, which integrate known and predicted protein associations from $>14,000$ organisms (35). A permutation test analysis evaluating the global cluster coefficient (36) of each module showed that 14 modules are significantly enriched ($P < 0.001$) for genes encoding mutually interacting proteins (Fig. 2D). Overall, these results suggest that comethylation relationships can be reflected at the protein level for a subset of modules.

Modules related to maximum life span

To adjust for potential confounders, we used four regression modeling approaches to iden-

tify modules that are associated with the log-transformed maximum life span (dependent variable): (i) a univariate regression model with a covariate that was the module eigengene (averaged per species); (ii) a phylogenetic regression model with a covariate that was again the module eigengene (averaged per species); (iii) a multivariate linear regression model that included the module eigengene, sex, tissue, and relative age as covariates; and (iv) model approach (i) applied to specific tissue types.

The marginal analysis identified four modules: magenta, black, midnightblue, and tan, that related significantly to maximum life span (the absolute value of the Pearson correlation exceeded $r = 0.6$, Student's t test $P < 1 \times 10^{-33}$). The CpGs underlying the implicated modules exhibit the sample patterns, as can be seen from corresponding heatmaps (fig. S14C). Phylogenetic regression also identified associations of the same modules (table S3). Our fourth modeling approach, i.e., the tissue-stratified marginal analysis, indicates that the relationship of modules to maximum life span is often tissue specific. For example, the magenta and midnightblue modules relate to maximum life span in lung and liver (fig. S14A). By contrast, the black module relates to maximum life span only in skin, and the tan module exhibited a weak relationship to life span in the tissue-specific analysis.

For ease of comprehension, modules were labeled with the trait and direction of relationship by superscript plus and minus signs; for example, magenta is the Lifespan⁺Weight⁺Blood⁺ module. The two modules (magenta with 480 CpGs, and midnightblue with 249 CpGs) that correlated with life span in lung and liver also correlated significantly with average adult weight across all eutherian species ($r = 0.47$ to 0.55 , $P < 1 \times 10^{-18}$; Fig. 3). The magenta module (Lifespan⁺Weight⁺Blood⁺) is enriched with developmental genes such as *HOXA5*, *VEGFA*, *SOX2*, and *WNT11* (table S4). The midnightblue (Lifespan⁺Weight⁺) module implicates genes involved in transfer RNA metabolism ($P = 2 \times 10^{-6}$, e.g., *URMI*), lipopolysaccharides ($P = 5 \times 10^{-6}$, e.g., *CERCAM*), development ($P = 10^{-4}$, e.g., the *HOXL* gene family), and fatty acids ($P = 2 \times 10^{-3}$, e.g., *ACADVL*). The magenta module also relates to life span and average weight of dog breeds ($r = -0.30$, $P = 0.003$; Fig. 3C). Furthermore, it is related to the hazard of human death [hazard ratio (HR) = 0.91, MetaP = 0.0016; Fig. 3D] in epidemiological cohort studies.

After adjustment for phylogeny, the cyan module relates to mammalian life span phylogenetic contrast ($r = 0.42$, $P = 4 \times 10^{-14}$; fig. S13I). The Lifespan⁺Liver⁻ (cyan) module consists of genes that play a role in adaptive immunity ($P = 2 \times 10^{-6}$), histone and protein demethylation ($P = 0.0001$), and metabolism ($P = 0.0004$) (table S4).

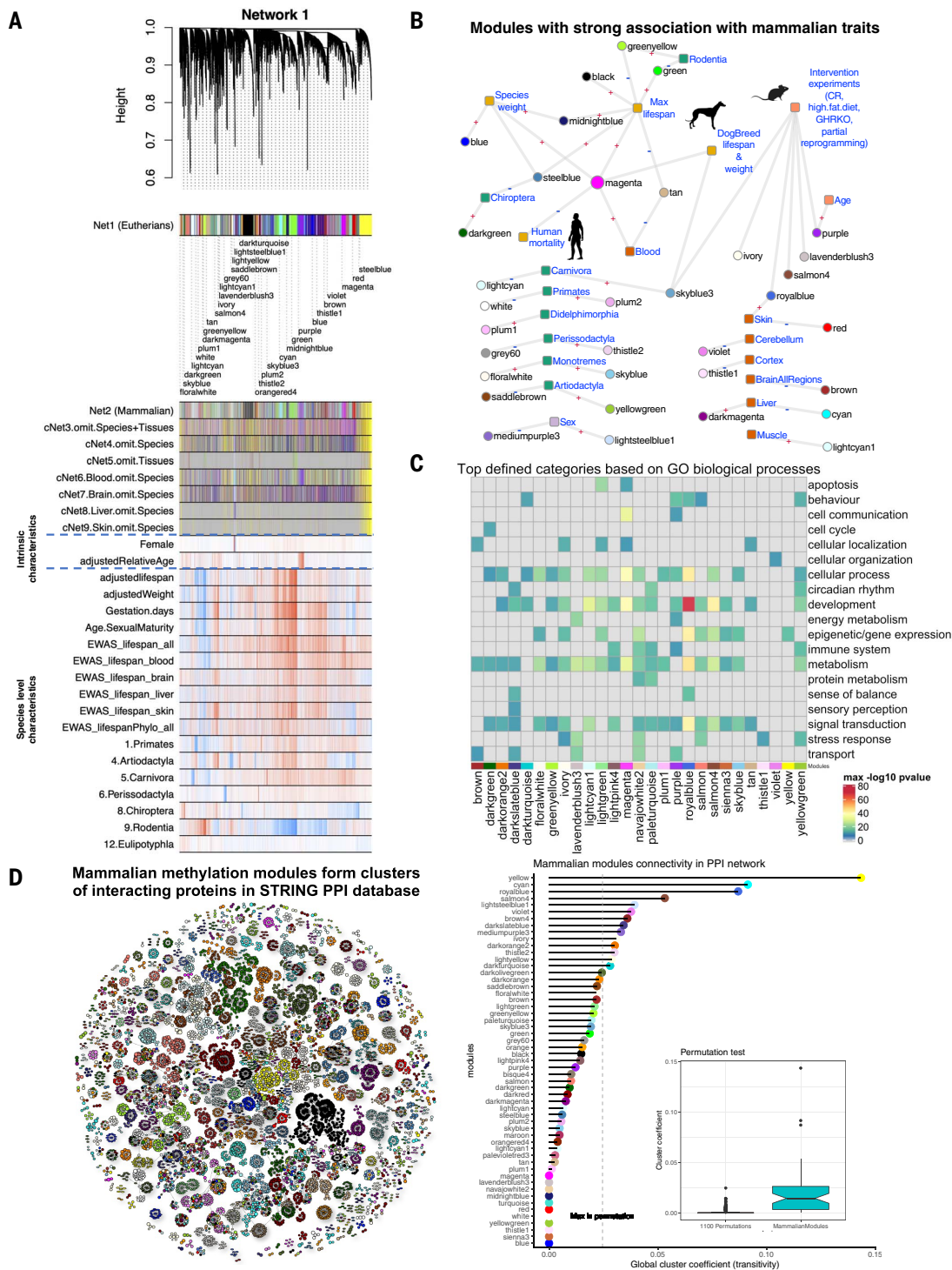


Fig. 2. DNAm network relates to species and individual characteristics in mammalian species. (A) the WGCNA network of 14,705 conserved CpGs in eutherian species (Net1). The identified modules related to species or individual sample characteristics. Net1 modules were compared with eight additional networks (fig. S5). The modules with strong associations with species and sample characteristics are labeled below the dendrogram. Gray color indicates CpGs that are outside of modules. (B) Summary of the modules showing strong associations with species and individual sample characteristics. The plus and minus labels are the direction of association with each trait. (C) Top defined functional biological processes related to Net1 modules (for details, see fig. S9 and table S4). (D) Mammalian comethylation modules form clusters of proteins in the STRING protein-protein interaction (PPI) network. For the

sake of visualization, the analysis was limited to the top 50 CpGs with the highest module membership value per module. Colors indicate mammalian Net1. The lollipop plot shows the global cluster coefficient (γ) of the proteins within a module (up to 500 top CpGs) in a PPI network. Our permutation analysis matched the distribution of the original module sizes. We evaluated 1100 random permutations, i.e., 20 for each of the 55 modules. The boxplot reports the global clustering coefficient per module (y axis) versus permutation status: module resulting from a random selection of proteins (left) versus original module resulting from WGCNA (right). The modules with cluster coefficients larger than the maximum permutation cluster coefficient were considered as significant at $P = 0.001$. The dashed vertical line corresponds to the maximum global clustering coefficient observed in the 1100 random permutations.

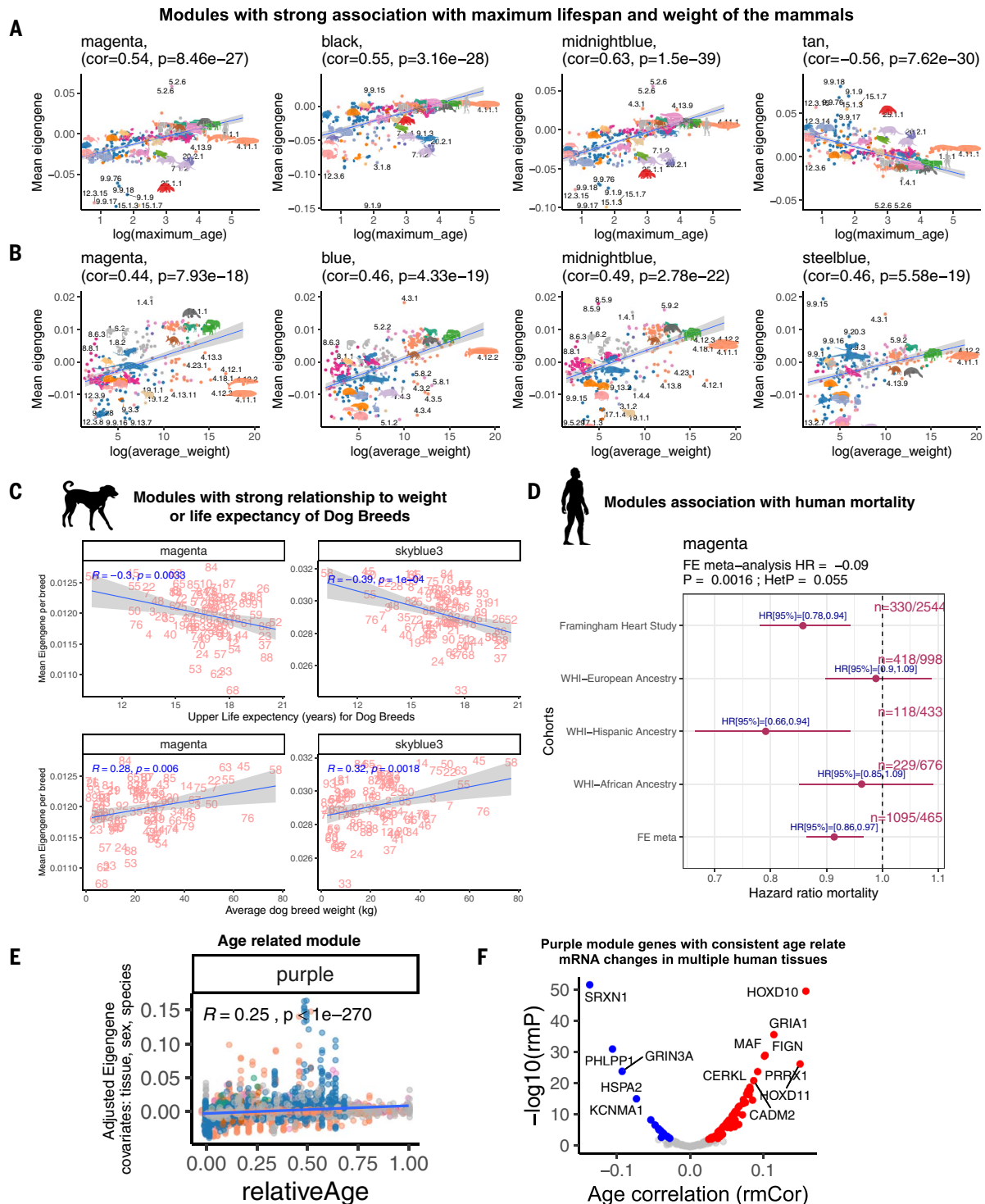


Fig. 3. Comethylation modules related to mammalian maximum life span, weight, human mortality, and age. (A and B) Modules associated with log maximum life span ($P < 10^{-20}$) (A) or log average species weight ($P < 10^{-1}$) (B) in marginal association (correlation test with the mean module eigengene of the species). The module eigengene is defined as the first principal component of the scaled CpGs underlying a module. The species are randomly labeled by their animal number (table S1). (C) The top modules associated with median life expectancy, upper limit life expectancy, or average adult weight of 93 dog breeds, model (marginal correlation test of the mean module eigengene with target variables; for detailed breed characteristics, see table S8). *R*, Pearson correlation* coefficient; *P*, correlation test

P value. (D) Forest plots of the top modules associated with mortality risk in the Framingham Heart Study Offspring Cohort (FHS), and Women’s Health Initiative (WHI) study totaling 4651 individuals (1095, 24% death). *n* denotes the number of deaths per total number of individuals in each study. We report the meta-analysis *P* value in the title of the forest plot. (E) Module that correlates significantly ($P < 1 \times 10^{-300}$) with relative age (defined as ratio of age/maximum life span) across mammalian species using a multivariate regression model. Covariates were tissue, sex, and species differences. Each dot corresponds to a eutherian tissue sample ($n = 14,542$). Dots are colored by taxonomic order as in Fig. 1. (F) Volcano plot of the rmCorr of all purple module genes in GTEx data (for additional analysis, see fig. S11).

The multivariate model analysis included sex, tissue type, and relative age as covariates to reveal additional modules that relate to life span in different tissues. The regression analysis found two modules with opposing correlations with maximum life span: the green module (life span $r = 0.42$, average weight $r = 0.38$, $P < 10^{-300}$) and the greenyellow module (life span $r = -0.44$, average weight $r = -0.35$, $P < 10^{-300}$; fig. S13J). The CpGs of the Lifespan Weight Rodentia⁻ (greenyellow) are located near genes that play a role in development ($P = 5 \times 10^{-13}$; table S4) and in RNA metabolism ($P = 6 \times 10^{-12}$).

Age-related consensus module in mammals

The purple module (denoted subsequently as RelativeAge⁺ module) exhibited the strongest positive correlation with relative age (relative age $r = 0.35$, $P < 10^{-300}$; Fig. 3E and fig. S13).

To remove the confounding effects of species and/or tissue type, we also constructed seven consensus networks (denoted cNet3,..., cNet9; for a description, see the supplementary materials). The RelativeAge⁺ module was preserved in three different consensus networks (cNet3, cNet4, and cNet6; Fig. 2A), suggesting conservation in different species and tissues (scatter plot in fig. S11H). The purple RelativeAge⁺ module is positively enriched for CpGs in regulatory regions (e.g., promoters and 5' untranslated regions) and depleted in intron regions (fig. S15). Functional enrichment of this module highlighted embryonic stem cell regulation, axonal fasciculation, angiogenesis, and diabetes-related pathways (table S3). The CpGs in this module are adjacent to Polycomb repressor complex 2 (PRC2, EED) targets, which are marked by H3K27me3 (table S3).

Ingenuity pathway analysis implicated POU5F1 (alias OCT4), SHH, ASCL1, SOX2, and NEUROG2 proteins as putative upstream regulators of the RelativeAge⁺ module. We used Genotype-Tissue Expression project (GTEx) data to determine whether the mRNA levels of any of these upstream regulators are altered with age in several human tissues. *OCT4* [repeated-measures correlation (rmCorr) = 0.07, $P = 2 \times 10^{-14}$], which is among the four known Yamanaka factors for cellular dedifferentiation, showed a positive increase with age in several, but not all, human tissues (fig. S11F). Nine other genes (e.g., *HOXD10*, rmCorr = 0.16, $P = 4 \times 10^{-50}$; *SRXN1*, rmCorr = -0.14, $P = 4 \times 10^{-52}$) from the RelativeAge⁺ module also had a nominally significant rmCorr ($P < 0.005$) in GTEx data (Fig. 3F and fig. S11G), although opposite aging patterns could be found in select tissues. These observations highlight the relevance of genes in the RelativeAge⁺ module to stem cell biology and aging in human tissues.

Interventional studies in mice

We related our methylation modules to interventions that are known to modulate the

life span of mice (Fig. 4, A to C). This included growth hormone receptor knockout (i.e., dwarf mice) (37) and caloric restriction (38), which extended life, and a high-fat diet, which elicited the opposite effect (12). Six modules, including the purple module (RelativeAge⁺) showed a significant decrease ($P < 0.05$) of the module eigengene in dwarf mice and after caloric restriction and, conversely, a modest increase after a high-fat diet. Although the magenta, black, midnightblue, tan, and greenyellow modules have connections to the maximum life span in mammals, they did not present a clear relationship with interventions that modify murine life span (growth hormone receptor knockout, caloric restriction, and high-fat diet). This suggests a mutual exclusivity between the modules related to the maximum mammalian life span and those affected by interventions modulating the murine life span.

Transient expression of Yamanaka factors

We investigated whether a transient expression of the Yamanaka factors in the 4-factor (4F) mouse affects the module eigengenes. The experimental design is shown in Fig. 4D, with additional details reported in the original article (39). Four of six of the above-mentioned murine intervention modules showed a nominally significant dose-dependent rejuvenation in murine skin ($P < 0.06$), and two modules showed the same in kidney (dose refers to the duration of 4F treatment: 0, 1, 7, and 10 months of intermittent expression of 4F factors) (Fig. 4E). The purple, ivory, and lavenderblush3 modules were particularly sensitive to the 4F treatment (Pearson's $r < -0.64$ in skin). In addition, the purple RelativeAge⁺ module's response to the 4F treatment is consistent with bioinformatic findings that OCT4 is an upstream regulator of this module. Among the life span modules, only the black module demonstrates an increase ($P = 0.007$) in skin of 4F treated mice, but this was not observed in the kidney.

Epigenome-wide association analysis of maximum life span

We performed epigenome-wide association studies (EWASs) to identify individual CpGs with methylation levels that correlate with maximum life span. To reduce bias resulting from different levels of sequence conservation, our EWASs of maximum life span focused on 333 eutherian species, excluding marsupial and monotreme species. We restricted the analysis to 28,318 high-quality probes that are conserved between humans and mice.

When relating individual CpGs to log-transformed maximum life span, we used several modeling approaches (for details, see the supplementary text). Briefly, our first approach, generic modeling, applied regres-

sion analysis ignoring tissue type and age. In our second approach, we repeated the regression analysis after focusing on a given tissue type. Third, we focused on specific nonoverlapping age groups: young animals (defined as age <1.5 times the age at sexual maturity), middle-aged, and old (defined as age >3.5 times the age at sexual maturity; fig. S19). Some of these regression models were further adjusted for average species weight (denoted LifespanAdjWeight).

For brevity, we will focus on linear regression models because phylogenetic regression models led to qualitatively similar conclusions (tables S13 and S14). The most significant life span-related CpGs are located in the distal intergenic region neighboring *TLE4* (Pearson's $r = 0.68$, $P = 5.8 \times 10^{-46}$; Fig. 5A and table S11) and two CpGs near the promoter region of *HOXA4* ($r = 0.66$, $P = 7.5 \times 10^{-45}$; Fig. 5A, midnightblue module) and are negatively correlated with a CpG in an intron of *GATA3* ($r = -0.65$, $P = 8.8 \times 10^{-42}$; Fig. 5A). Many of these significant CpGs remained so after phylogenetic adjustment, such as the CpGs neighboring *TLE4* and *HOXA4* ($P = 4.2 \times 10^{-5}$ and $P = 4.8 \times 10^{-3}$, respectively; fig. S17 and tables S11 and S12). The top 1000 life span-related CpGs (comprising 500 positively and 500 negatively life span-related CpGs) significantly overlapped (Fisher's exact $P = 5.5 \times 10^{-134}$) with those found in our weight-adjusted analysis (LifespanAdjWeight).

In general, methylation of life span-related CpGs does not change with age in mammalian tissues (Fig. 5B and fig. S20). The same can be seen from EWASs of life span restricted to animals of a given age group (e.g., only very young animals; fig. S20D). The EWASs of life span in all animals (irrespective of age) is highly correlated ($r > 0.7$), with the analogous EWASs restricted to animals that are young, middle-aged, or old.

EWASs of life span showed good consistency with the eigengene-based analysis in the mammalian comethylation network. As expected, the following previously discussed life span-related modules were enriched with CpGs implicated by our EWAS of life span: midnightblue (hypergeometric test $P = 2.2 \times 10^{-47}$; 67/249 overlapped CpGs), greenyellow (hypergeometric $P = 2.1 \times 10^{-36}$; 70/398 overlapped CpGs), tan (hypergeometric $P = 6.7 \times 10^{-23}$; 52/365 overlapped CpGs), and green (hypergeometric $P = 5.0 \times 10^{-18}$; 104/1542 overlapped CpGs).

In total, 1006 genes had a differential methylation association with life span (union of cognate genes resulting from the marginal model analysis for life span and LifespanAdjWeight). The gene expression levels of 16 of these genes exhibited a highly significant repeated-measures correlation with chronological age (rmCorr P value $< 10^{-50}$) in different human tissues (Fig. 5C). The cognate genes next to the top 500 positively life span-related CpGs play a



Modules sensitive to lifespan related interventions

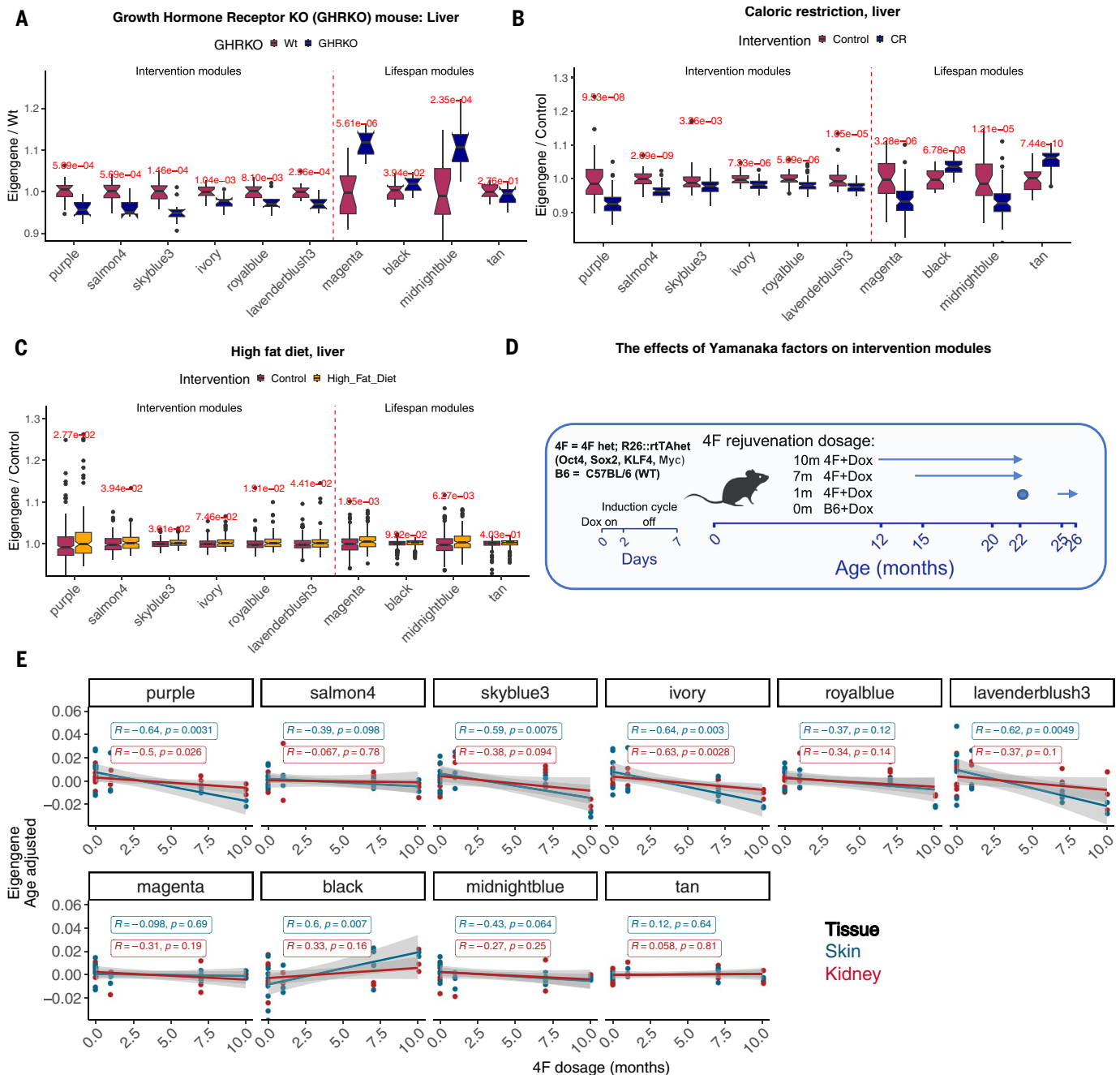


Fig. 4. The effects of different pro-aging and anti-aging interventions on selected DNAm modules. Six DNAm modules respond to life span-related intervention experiments and are associated with the life expectancy of the mouse models. By contrast, the mammalian maximum life span modules do not correspond directly to the benefits or stress triggered by the intervention in the murine samples. **(A)** Changes in the intervention modules in the liver parallel smaller size and longer life expectancy of growth hormone receptor mouse models (GHRKO). Sample size: GHRKO, $n = 11$ ($n = 5$ female, $n = 6$ male); wild type, $n = 18$ ($n = 9$ male, $n = 9$ female). Age range was 6 to 8 months. **(B)** Caloric restriction (CR) DNAm module signature predicts longer life span in this treated group (age = 18 months; sex = male; CR, $n = 59$; control, $n = 36$). **(C)** High-fat diet accelerates aging in five modules including the purple (RelativeAge⁺) module. High-fat diet, $n = 133$ ($n = 125$ females,

$n = 8$ males); control (ad libitum feeding), $n = 212$ ($n = 10$ male, $n = 202$ female). Age range was 3 to 32 months. **(D and E)** Examining the effects of in vivo partial reprogramming on intervention modules. **(D)** Schematic view of the partial reprogramming experiment in 4F mice (39). A systemic Yamanaka factors expression (Oct4, Sox2, Klf4, and Myc) was periodically induced by adding doxycycline to the drinking water for 2 days per week. Partial reprogramming was done at three different durations. Sample size: control (C57BL/6+dox), $n = 7$; 1 month (1m) 4F, $n = 3$; 7 months (7m) 4F, $n = 5$; 10 months (10m) 4F. All tissues except skin, $n = 3$; skin, $n = 2$. **(E)** scatter plots of the linear changes of the intervention modules in the skin and kidney of mice treated with different durations (dosages) of Yamanaka factors. Intervention modules indicate a dose-dependent rejuvenation of skin and kidney by this partial programming regimen.

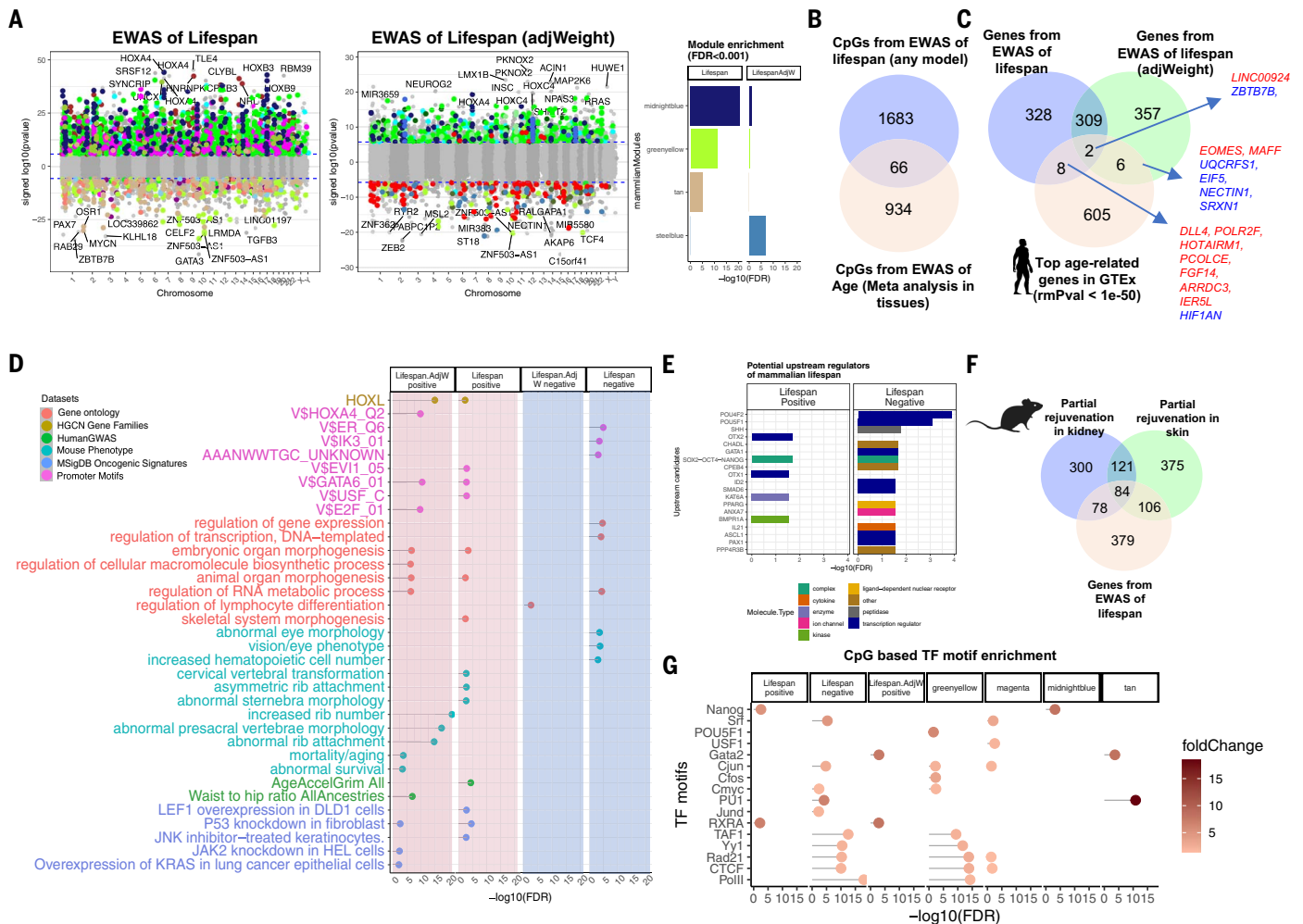


Fig. 5. EWAS of mammalian log-transformed maximum life span. (A) CpG-specific association with maximum life span across $n = 333$ eutherian species. For EWAS, the mean methylation values of each CpG (per species) were regressed on log maximum life span. The right portion of the panel reports EWAS results after adjustment for average adult weight. Genome annotation includes human hg19. Blue dotted line indicates Bonferroni-corrected two-sided P value < 1.8×10^{-6} . The point colors indicate the corresponding modules. The bar plot indicates the top enriched (hypergeometric test, eutherian probes as background) modules for the top 1000 (500 negative CpGs, nominal $P < 1.1 \times 10^{-11}$, FDR = 1×10^{-10} ; 500 negative and positive CpGs, nominal $P < 1.5 \times 10^{-21}$, FDR = 7.5×10^{-20}) significant CpGs for different EWASs. (B) Venn diagram of the overlaps between top hits from EWAS of maximum life span and meta-analysis of age [meta-analysis results are from (7)]; for additional analysis, see fig. S20]. (C) Venn diagram of the overlaps between the genes adjacent to the EWAS results and top age-related mRNA changes in human tissues ($P < 1 \times 10^{-50}$). (D) Gene set enrichment analysis of the genes proximal to CpGs associated with mammalian maximum life span. We only report

critical role in animal organ morphogenesis [marginal model life span GREAT enrichment false discovery rate (FDR) = 3×10^{-4} and LifespanAdjWeight FDR = 3.3×10^{-7} ; Fig. 5D] and in increased rib number in mice (FDR = 1×10^{-21} ; Fig. 5D), and implicates the *HOXL* subclass homeobox genes (FDR = 0.004 and LifespanAdjWeight FDR = 1.3×10^{-15}) in abnormal survival in mice (FDR < 4×10^{-4}).

Upstream regulators of maximum life span

We used ingenuity pathway analysis (40) to identify potential upstream regulators of the genes cognate to the top 500 positively and top 500 negatively life span-related CpGs. The top-ranked candidate regulators of both gene lists included *SOX2-OCT4-NANOG* pluripotency factors (FDR = 5.7×10^{-4} life span negative, FDR = 5.7×10^{-4} life span positive), which

enrichment terms that are significant after adjustment for multiple comparisons (hypergeometric FDR < 0.01) and contain at least five significant genes. The top three significant terms per column (EWAS) and enrichment database are shown. (E) Ingenuity potential upstream regulator analysis (40) of the differentially methylated genes related to mammalian maximum life span. Only significant (FDR < 0.05) regulators are represented in the bar plot. (F) Venn diagram of three gene lists. Gene list 1 is the top 646 genes adjacent to 1000 life span-related CpGs (500 positive and 500 negative). Gene lists 2 and 3 are based on CpGs that are differentially methylated (nominal Wald test $P < 0.005$, up to 500 positive and 500 negatively related CpGs) after *OSKM* overexpression in murine kidney (583 genes) and skin (686 genes) (39). We observed significant overlap between the gene lists (nominal Fisher's exact $P = 9.9 \times 10^{-30}$ for skin and life span; $P = 4.5 \times 10^{-25}$ for kidney and life span). (G) Transcriptional factor motif enrichment analysis of life span modules and life span-related CpGs. The enrichment results for LifespanAdjWeight. negative were not significant. The overlap is assessed by a hypergeometric test for the CpGs within the motifs based on the human hg19 genome.

findings suggest that expression of life span-related genes might be regulated to some extent by pluripotency factors. This prompted us to investigate whether expression of any of the life span-related genes identified above are altered by transient expression of pluripotency inducing factors (Yamanaka factors OSKM) in a mouse model (39). Indeed, this analysis revealed that transient expression of OSKM altered the expression of 190 of 647 life span-related genes in skin and 162 life span-related genes in the kidney (nominal Fisher's exact $P = 9.9 \times 10^{-30}$ for skin and life span; $P = 4.5 \times 10^{-25}$ for kidney and life span; Fig. 5F and fig. S32). Genomic positions that are known to be bound by pluripotency factors in at least one human or murine cell type according to chromatin immunoprecipitation sequencing (ChIP-seq) data from the Encyclopedia of DNA Elements (ENCODE) consortium are located near CpGs that are associated with maximum species life spans: NANOG-binding sites are enriched for CpGs that are positively correlated with life span (FDR = 0.002) and to CpGs underlying the midnightblue module (FDR = 0.0006), which has high methylation levels in long-lived species (Fig. 5G). OCT4 (POU5F1) (FDR = 0.02), and cMYC (FDR = 0.003) binding sites are enriched with CpGs in the greenyellow module, which has low methylation levels in long-lived species (Fig. 5G). The ChIP-seq binding location analysis also implicates other noteworthy factors such as POLII, CTCF, RAD21, YY1, and TAF1, which show the strongest enrichment for negatively life span-related CpGs (Fig. 5G).

Given the role of CTCF in regulating the three-dimensional organization of the genome, we conducted an enrichment analysis of topologically associating domain (TAD) boundaries and loop boundaries identified in both human and mouse cell lines (fig. S26). We found that both TAD and loop boundaries demonstrated significant enrichment of negatively life span-related CpGs (FDR = 3×10^{-4}) for TAD boundaries and (FDR = 6.7×10^{-4}) for loop boundaries in various cell lines such as olfactory receptor cells and the human fibroblasts IMR90 and HFFc6 (fig. S26).

CpGs linked to life span in various taxonomic orders and tissues

To pinpoint CpGs associated with log maximum life span independently of phylogenetic order or tissue type, we conducted a meta-analysis of EWAS findings from 25 distinct strata comprising phylogenetic order and tissue type. Using a nonparametric meta-analysis approach (rankPvalue), we assessed the EWAS of life span (meta.lifespan) in these strata to identify CpGs unconfounded by tissue type or phylogenetic order (table S24). Our meta.lifespan results demonstrated significant overlap with the previously mentioned EWASs of life

span in all eutherian species (hypergeometric $P = 1 \times 10^{-175}$; Fig. 6A). By contrast, none of the meta.lifespan CpGs overlapped with EWASs of age, which further supports the idea that methylation of life span-related CpGs does not change with age in mammalian tissues. The top four CpGs from the meta.lifespan analysis are depicted in Fig. 6B, showing significant positive correlations for CpGs near LOXL1 and ZSCAN29 (exons) and negative correlations for those near RAB29 (exon) and GATA3 (downstream), with log maximum life span across various taxonomic orders and tissue types. Similar to our above-mentioned results, CpGs implicated by our meta.lifespan analysis (FDR < 0.05) overlap significantly (FDR < 0.01) with genes involved in organ morphogenesis, RNA biosynthesis, increased rib number in mice, Wnt signaling (Fig. 6C), and genes altered by transient expression of pluripotency-inducing factors in mouse models (nominal Fisher's exact $P < 10^{-5}$ for skin and meta.lifespan; $P < 10^{-11}$ for kidney and meta.lifespan; Fig. 6D).

Chromatin state analysis

Our large-scale mammalian DNAm data confirm that CpGs located in promoter regions (~2000 to 2000 bp of TSS regions) have low methylation levels (mean = 15%; Fig. 7A). By contrast, those in gene bodies and distal regions are highly methylated (mean = ~70%; Fig. 7A). CpGs having a high or low mean methylation level tend to have positive or negative correlation test Z statistics for life span, respectively (Fig. 7, A and B). We find that CpGs with low methylation levels in long-lived species are located close to the TSS of genes and near binding sites of PRC1 ($P = 6.4 \times 10^{-11}$; Fig. 7C) and PRC2 ($P = 2 \times 10^{-6}$). To test the hypothesis that long-lived species exhibit high or low methylation levels in chromosomal regions that are expected to have high or low methylation patterns, respectively, we used chromatin states that were identified and annotated based on >1000 epigenetic datasets encompassing a diverse range of human cell and tissue types (41).

The negatively life span-related CpGs are enriched with a constitutive TSS chromatin state (TSS1, $P = 2.5 \times 10^{-12}$) and promoter flanking states (PromF4, $P = 5.6 \times 10^{-10}$; PromF5, $P = 2.0 \times 10^{-9}$; PromF2, $P = 3.0 \times 10^{-4}$; Fig. 7C).

The CpGs with high methylation levels in blood samples of long-lived species are enriched in gene body-associated states (notably transcribed and exon state TxEx1, $P = 7.5 \times 10^{-8}$ and highly transcribed state TxEx4 $P = 1.7 \times 10^{-6}$; Fig. 7D). A detailed description of the chromatin state enrichment for EWASs of maximum life span is provided in the supplementary text and tables S21 and S22.

A biclustering analysis between chromatin annotations and comethylation modules based on fold enrichments (Fig. 8 and tables S21 and S22) revealed that the 55 mammalian comet-

hylation modules fall into three large groupings (referred to as meta-modules). The bar plot to the left of Fig. 8 shows different mean methylation levels of the CpGs underlying the three meta-modules: mean methylation = 0.23, 0.66, and 0.77 for meta-modules 1, 2, and 3, respectively.

Meta-module 1 contains several chromatin states that are associated with Polycomb repression, including strong polycomb-repressed state ReprPC1 and bivalent promoters (BivProm1-2). Further, meta-module 1 contains chromatin states related to TSSs (TSS1 and TSS2) and several flanking promoters (PromF2, PromF3, PromF4, and PromF5). TSS1, PromF4, and PromF5 (associated with negatively life span-related CpGs) were previously associated among universal chromatin states with the strongest enrichments for CpG islands (71 to 101 fold) (41). The color band under Fig. 8 reveals that six modules underlying meta-module 1 are sensitive to murine life span interventions. Meta-module 1 is enriched with CpGs that have low methylation levels in long-lived species (overlap with EWASs of life span, tan and greenyellow modules; Fig. 8).

Meta-module 2 can be considered as a partially methylated module (mean methylation 0.66) and is enriched with several enhancer states, late replicating domains [partially methylated domains, commonPMD (42)], and solo CpGs [WCGW (42)]. Meta-module 2 also contains the module most related with life span (midnightblue) and the human mortality risk module (magenta). These two modules overlap with the CpGs that are positively related to life span. Three out of four average weight-related modules are also located in meta-module 2.

Discussion

In this study, we present an analysis of a cross-species DNAm dataset obtained from a mammalian array platform. This platform specifically focuses on highly conserved regions of DNA, making it a valuable resource for studying methylation patterns across mammalian species (5). The successful construction of mammalian phyloepigenetic trees suggests that the divergence of DNAm profiles is closely aligned with genetic changes throughout evolution. Sensitivity assessments reveal that the observed phyloepigenetic associations are not caused by technical issues associated with our measurement platform. Instead, the phyloepigenetic signal may stem from sources such as upstream regulators, transcription factors, or DNA sequence variations in distant regions.

The conserved CpGs exhibiting the strongest phylogenetic signals are situated in intergenic regions, whereas promoter regions do not display such signals. Previous studies reported a rapid evolutionary rate of enhancers as a shared feature among mammalian genomes,

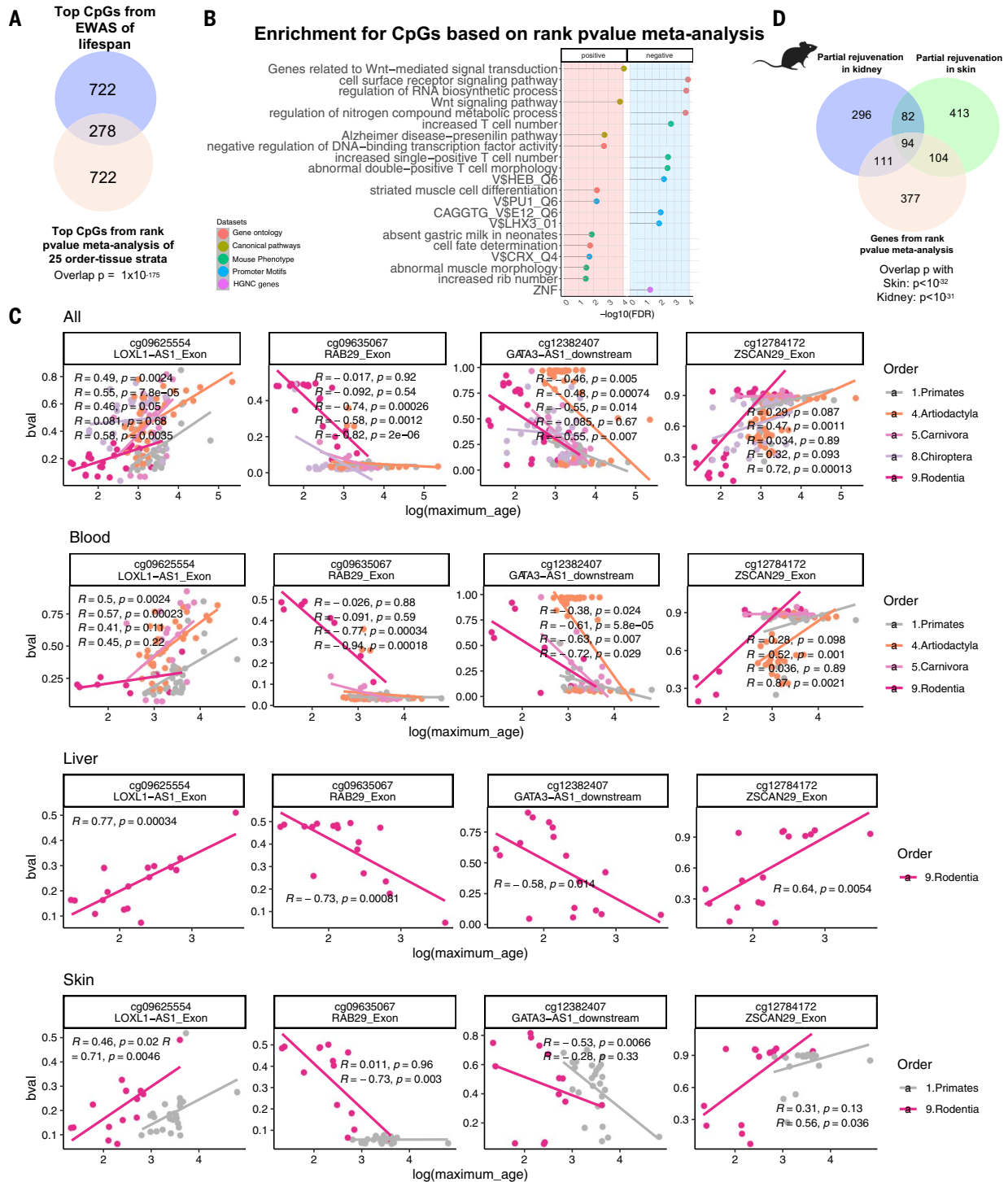


Fig. 6. CpGs linked to life span in various taxonomic orders and tissues. Using the nonparametric rankPvalue method (33), we combined 25 EWAS of life span results from various taxonomic order or tissue type strata, calculating the significance of a CpG's consistently high (or low) rank based on the 25 EWASs of log maximum life span (meta.lifespan and underlying EWAS results can be found in table S24 and data S19). **(A)** The overlap of top 1000 (500 per direction) meta.lifespan CpGs with EWAS of life span in all eutherians (nominal Fisher's exact $P = 1 \times 10^{-175}$). **(B)** Scatter plots illustrating the top meta.lifespan CpGs categorized into different tissue-phylogenetic order strata. Each panel displays only the strata that exhibit significant relationships. Each dot represents a species colored by taxonomic order. Each row corresponds to a different selection of tissue type. "bval" denotes the beta value, measuring

DNAm at a CpG site, with 0 indicating no methylation and 1 indicating full methylation. **(C)** Gene set enrichment analysis of the genes proximal to CpGs associated with mammalian maximum life span. We only report enrichment terms that are significant after adjustment for multiple comparisons (hypergeometric FDR < 0.01) and contain at least five significant genes. The top three significant terms per column (EWAS) and enrichment database are shown. **(D)** Venn diagram of three gene lists. Gene list 1 (the bottom circle) is the top 407 genes adjacent to 1000 meta.lifespan CpGs (500 positive and 500 negative). Gene lists 2 and 3 (the top circles) are based on CpGs that are differentially methylated (nominal Wald test $P < 0.005$, up to 500 positive and 500 negatively related CpGs) after OSKM overexpression in murine kidney (583 genes) and skin (686 genes) (39).

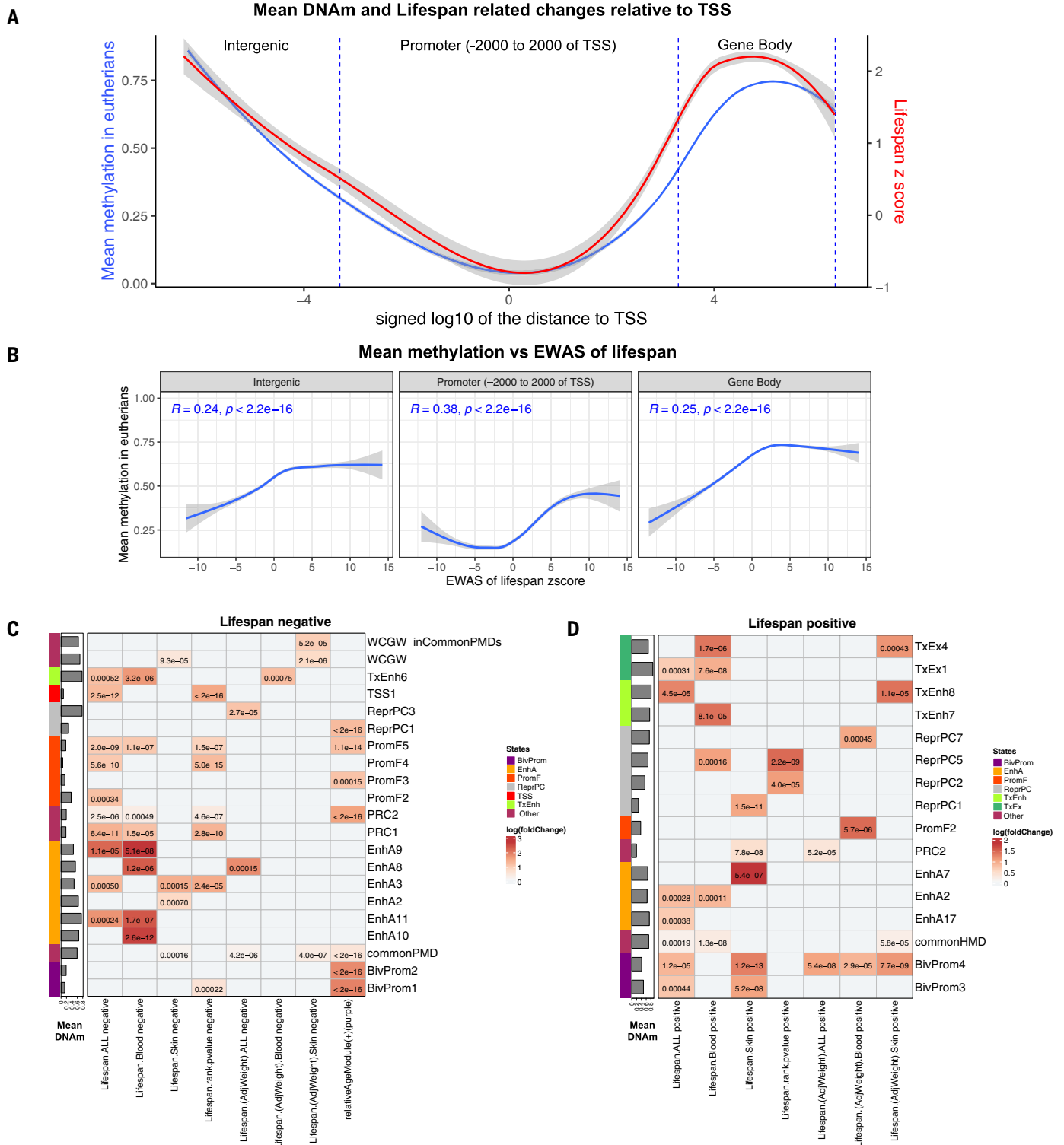


Fig. 7. Chromatin state analysis and distance to the TSS for the life span-related CpGs. (A) Illustrated plot presenting mean methylation across species (displayed on the left y axis) and EWAS of maximum life span Z statistics (shown on the right y axis), all plotted against the distances to the closest TSS (represented on the x axis). (B) Mean methylation across species (y axis) plotted against EWAS Z statistics for log maximum life span in different genomic regions (intergenic, promoter, and gene body). Additional EWAS results after

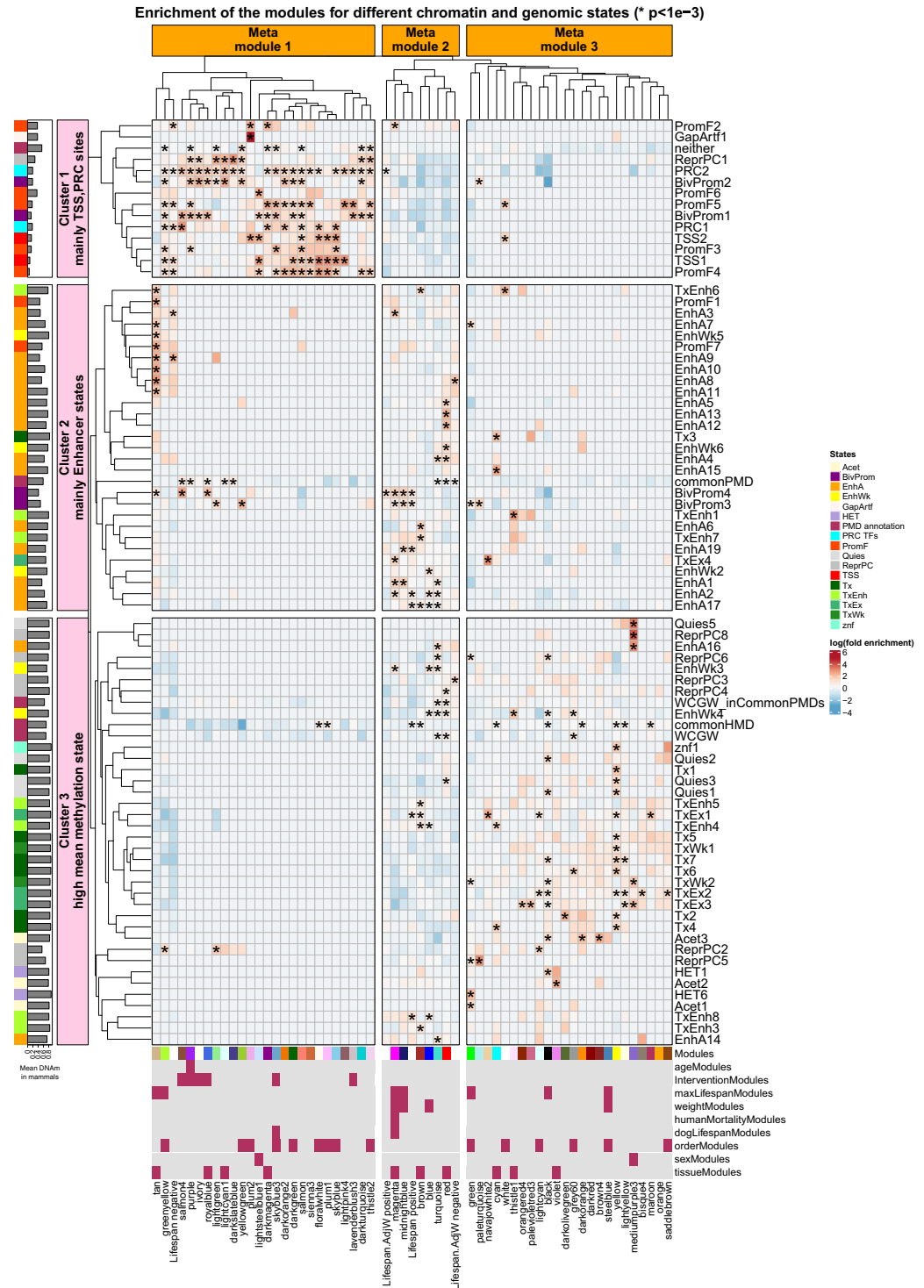
adjustment for phylogenetic relationships can be found in figs. S17 to S20, and corresponding enrichment results can be found in figs. S22 to S24. Pearson correlation coefficients and P values are reported in different panels. (C and D) Chromatin annotation enrichment analysis of the top 500 negatively life span-related CpGs (C) and the top 500 positively life span-related CpGs (D). The columns in each panel correspond to EWAS results for log-transformed maximum life span across (i) all tissues combined (Lifespan.All), (ii) blood

samples only (Lifespan.Blood), and (iii) skin samples only (Lifespan.Skin), (iv) meta analysis of lifespan in different tissues (meta.lifespan), and the corresponding results after adjustment for average adult weight (LifespanAdjWeight). The last column reports enrichment with respect to the RelativeAge⁺ module (purple). We used the same significance thresholds as in Fig. 5. Cell shading corresponds to fold enrichment between comethylation modules and each chromatin state. Numeric values correspond to the *P* value of such enrichments based on the

hypergeometric test, and only cell values with significant *P* < 0.001 (equivalent to FDR < 0.02) are shown. The chromatin states are learned based on epigenetic datasets profiling chromatin mark signals in different human cell and tissue types, resulting in a genome annotation shared across cell types (41). The common partially methylated domains (commonPMD), solo CpGs (WCGW), and highly methylated domain (HMD) annotations are from (42). PRC1 and PRC2 binding sites are obtained from the ChIP-seq datasets of PRC1 and PRC2 from ENCODE (45).

Fig. 8. Mammalian methylation meta-modules based on chromatin states and external genome annotations.

The heatmap shows the enrichments between (1) mammalian life span-related EWAS CpG groups (x axis) and (2) chromatin states or other genomic annotation (y axis). Cell shading corresponds to log-transformed fold enrichment values (observed CpG count divided by expected count). Hypergeometric tests were used to evaluate the enrichment significance in each cell. *Nominal *P* < 0.001 (FDR < 0.10). Only chromatin states and external genome annotations with at least one significant enrichment (FDR < 0.10) are shown. The chromatin states are based on a human-based universal chromatin annotation of human cell and tissue types (41). Other genomic annotations include the commonPMD, solo CpGs (WCGW), HMD annotations, and neither (CpGs outside these annotations) which are from (42). In addition, PRC1 and PRC2 binding sites are defined from the ChIP-seq data of PRC1 and PRC2 from ENCODE (45). The row and column hierarchical clustering trees (average linkage) are based on a dissimilarity measure (1 minus the pairwise Pearson correlation between log-transformed fold enrichment values). The left barplot indicates the mean methylation levels of the CpGs in each state for all eutherian samples in our data. We used the 14,705 eutherian CpGs as the background for enrichment of the comethylation modules. By contrast, 28,318 CpGs (high-quality probes in humans and mice) were used as a background for enrichment of significant life span-related EWAS CpG groups with chromatin states and genome annotations. Each EWAS CpG group includes up to 500 most significant CpGs per direction (positively or negatively related with life span), as detailed in the caption of Fig. 5.



but promoters demonstrate either full or partial conservation across species (2).

We found that 30 of the resulting 55 modules identified from an unsupervised machine learning method were readily associated with species traits (taxonomic order, maximum life span, and average adult weight) or individual traits (chronological age, tissue, and sex). We expect that many of the remaining 25 modules will be associated with biological characteristics about which we currently have no information. As a case in point, although the yellow module was not associated with any of our primary tested traits, it did show association with response to a murine circadian rhythm disruption study (light pollution during the night; fig. S7B). The upstream regulator analysis of the EWAS of life span identified the pluripotency transcription factors OCT4, SOX2, and NANOG. We showed that the transient overexpression of OSKM in murine tissues affects the methylation levels of CpGs near genes implicated by our EWAS of maximum life span (Fig. 5E). We speculate that the enhanced activity of the pluripotency network in long-lived species results in more efficient tissue repair and maintenance, ensuring a longer life span.

Both the EWAS and eigengene-based analyses identified methylation signatures of maximum life span presumably established at birth. Most of these were independent of aging and interventions that affect murine mortality risk. Several CpGs that are more highly methylated in long-lived species are located near *HOXL* subclass homeoboxes and other genes that play a role in morphogenesis and development. Some of these life span-related CpGs are located next to genes that are also implicated in our analysis of upstream regulators (e.g., *ASCL1* and *SMAD6*).

CpGs with methylation levels that are inversely related to life span are enriched in TSS1- and promoter flanking (PromF4 and PromF5)-associated chromatin states. Genes located in chromatin state TSS1 are constitutively active and enriched for nucleic acid metabolic processes (41). This could imply that long-lived species either evolved selective mechanisms to maintain low methylation levels near TSSs or may have adaptations that promote the high expression of essential genes. This high expression may indirectly prompt more active DNA demethylation mechanisms.

Methods summary

The Mammalian Methylation Consortium generated cytosine methylation data from $n = 15,456$ DNA samples derived from 70 tissue types of 348 mammalian species (331 eutherians, 15 marsupials, two monotremes) using a custom-designed mammalian methylation array that targets CpGs at conserved loci in mammals (5). DNAm data were used for phylo-epigenetic tree development using I-cor dissimilarity applied to mean methylation values

per species. The choice of the correlation-based dissimilarity matrix is justified in the supplementary materials and methods.

For unsupervised analysis, we formed WGCNA networks based on two sets of CpG probes in our data. The first network was generated from 14,705 conserved CpGs in 10,927 samples of 167 eutherian species. The preservation of this network was evaluated in an independent dataset comprising 3692 samples from 29 tissues of 228 mammalian species (164 new species; 64 overlapped with the training set). The second network was a subset of 7956 conserved CpGs in 11,105 samples from 167 eutherian and nine marsupial species. In addition, we developed seven consensus comethylation networks to remove the confounding effects of species and tissue type. Consensus WGCNA can be interpreted as a meta-analysis across networks in different species and tissue types (33, 43).

For the eutherian network (Net1), module eigengenes (MEs) were defined as singular vectors (corresponding to the highest singular value) from the singular value decomposition of the scaled CpGs that underlie the respective module. The eigengenes in the eutherian network (Net1) explained a range of 24 to 63% (average 43%) of the variance in the methylation data in the training set, replication set, and all data in each module (table S3). For a given module, we defined the measure of module membership (kME) as the Pearson correlation between the module eigengene and the CpGs. The association of module eigengenes was examined for different traits using individual regression models.

EWAS of life span was done in 28,318 CpGs that apply to mice and humans according to calibration and titration data (correlation with calibration exceeds 0.8) and mappability information as described in (5). Because the distribution of maximum life span and other life history traits were highly skewed, we imposed a log transformation on these phenotypes before conducting EWAS. Our tissue type-specific EWAS was conducted in tissues with enough species ($N > 25$) available. For our various EWAS of log-transformed maximum life span, we adopted a nominal significance threshold of 1.8×10^{-6} ($0.01/28,318$) based on the conservative Bonferroni adjustment. We report an FDR in our enrichment studies to adjust for multiple comparisons.

REFERENCES AND NOTES

1. S. Xiao *et al.*, Comparative epigenomic annotation of regulatory DNA. *Cell* **149**, 1381–1392 (2012). doi: [10.1016/j.cell.2012.04.029](https://doi.org/10.1016/j.cell.2012.04.029); pmid: 22682255
2. D. Villar *et al.*, Enhancer evolution across 20 mammalian species. *Cell* **160**, 554–566 (2015). doi: [10.1016/j.cell.2015.01.006](https://doi.org/10.1016/j.cell.2015.01.006); pmid: 25635462
3. J. Qu *et al.*, Evolutionary expansion of DNA hypomethylation in the mammalian germline genome. *Genome Res.* **28**, 145–158 (2018). doi: [10.1101/gr.225896.117](https://doi.org/10.1101/gr.225896.117); pmid: 29259021

4. J. Klughammer *et al.*, Comparative analysis of genome-scale, base-resolution DNA methylation profiles across 580 animal species. *Nat. Commun.* **14**, 232 (2023). doi: [10.1038/s41467-022-34828-y](https://doi.org/10.1038/s41467-022-34828-y); pmid: 36646694
5. A. Arneson *et al.*, A mammalian methylation array for profiling methylation levels at conserved sequences. *Nat. Commun.* **13**, 783 (2022). doi: [10.1038/s41467-022-28355-z](https://doi.org/10.1038/s41467-022-28355-z); pmid: 35145108
6. K. M. Parsons *et al.*, DNA methylation-based biomarkers for ageing long-lived cetaceans. *Mol. Ecol. Resour.* **23**, 1241–1256 (2023). doi: [10.1111/1755-0998.13791](https://doi.org/10.1111/1755-0998.13791); pmid: 36994812
7. A. T. Lu *et al.*, Universal DNA methylation age across mammalian tissues. bioRxiv 426733 [Preprint] (2021). doi: [10.1101/2021.01.18.426733](https://doi.org/10.1101/2021.01.18.426733)
8. P. Kordowitzki *et al.*, Epigenetic clock and methylation study of oocytes from a bovine model of reproductive aging. *Aging Cell* **20**, e13349 (2021). doi: [10.1111/acer.13349](https://doi.org/10.1111/acer.13349); pmid: 33797841
9. N. A. Prado *et al.*, Epigenetic clock and methylation studies in elephants. *Aging Cell* **20**, e13414 (2021). doi: [10.1111/acer.13414](https://doi.org/10.1111/acer.13414); pmid: 34118182
10. T. R. Robeck *et al.*, Multi-species and multi-tissue methylation clocks for age estimation in toothed whales and dolphins. *Commun. Biol.* **4**, 642 (2021). doi: [10.1038/s42003-021-02179-x](https://doi.org/10.1038/s42003-021-02179-x); pmid: 34059764
11. B. Larison *et al.*, Epigenetic models developed for plains zebras predict age in domestic horses and endangered equids. *Commun. Biol.* **4**, 1412 (2021). doi: [10.1038/s42003-021-02935-z](https://doi.org/10.1038/s42003-021-02935-z); pmid: 34921240
12. K. Mozhui *et al.*, Genetic loci and metabolic states associated with murine epigenetic aging. *eLife* **11**, e75244 (2022). doi: [10.7554/eLife.75244](https://doi.org/10.7554/eLife.75244); pmid: 35389339
13. V. J. Sugrue *et al.*, Castration delays epigenetic aging and feminizes DNA methylation at androgen-regulated loci. *eLife* **10**, e64932 (2021). doi: [10.7554/eLife.64932](https://doi.org/10.7554/eLife.64932); pmid: 34227937
14. T. R. Robeck *et al.*, Multi-tissue methylation clocks for age and sex estimation in the common bottlenose dolphin. *Front. Mar. Sci.* **8**, 713373 (2021). doi: [10.3389/fmars.2021.713373](https://doi.org/10.3389/fmars.2021.713373)
15. S. Horvath *et al.*, Methylation studies in *Peromyscus*: Aging, altitude adaptation, and monogamy. *Geroscience* **44**, 447–461 (2022). doi: [10.1007/s11357-021-00472-5](https://doi.org/10.1007/s11357-021-00472-5); pmid: 34698996
16. S. Horvath *et al.*, Epigenetic clock and methylation studies in marsupials: Opossums, Tasmanian devils, kangaroos, and wallabies. *Geroscience* **44**, 1825–1845 (2022). doi: [10.1007/s11357-022-00569-5](https://doi.org/10.1007/s11357-022-00569-5); pmid: 35449380
17. S. Horvath *et al.*, Epigenetic clock and methylation studies in the rhesus macaque. *Geroscience* **43**, 2441–2453 (2021). doi: [10.1007/s11357-021-00429-8](https://doi.org/10.1007/s11357-021-00429-8); pmid: 34487267
18. S. Horvath *et al.*, DNA methylation age analysis of rapamycin in common marmosets. *Geroscience* **43**, 2413–2425 (2021). doi: [10.1007/s11357-021-00438-7](https://doi.org/10.1007/s11357-021-00438-7); pmid: 34482522
19. A. J. Jasinska *et al.*, Epigenetic clock and methylation studies in vervet monkeys. *Geroscience* **44**, 699–717 (2021). doi: [10.1007/s11357-021-00466-3](https://doi.org/10.1007/s11357-021-00466-3); pmid: 34591235
20. K. Raj *et al.*, Epigenetic clock and methylation studies in cats. *Geroscience* **43**, 2363–2378 (2021). doi: [10.1007/s11357-021-00445-8](https://doi.org/10.1007/s11357-021-00445-8); pmid: 34463900
21. K. M. Schachtschneider *et al.*, Epigenetic clock and DNA methylation analysis of porcine models of aging and obesity. *Geroscience* **43**, 2467–2483 (2021). doi: [10.1007/s11357-021-00439-6](https://doi.org/10.1007/s11357-021-00439-6); pmid: 34523051
22. M. L. Cossette *et al.*, Epigenetics and island-mainland divergence in an insectivorous small mammal. *Mol. Ecol.* **32**, 152–166 (2023). doi: [10.1111/mec.16735](https://doi.org/10.1111/mec.16735); pmid: 36226847
23. J. F. Lemaître *et al.*, DNA methylation as a tool to explore ageing in wild roe deer populations. *Mol. Ecol. Resour.* **22**, 1002–1015 (2022). doi: [10.1111/1755-0998.13533](https://doi.org/10.1111/1755-0998.13533); pmid: 34665921
24. S. Horvath *et al.*, DNA methylation clocks tick in naked mole rats but queens age more slowly than nonbreeders. *Nat. Aging* **2**, 46–59 (2022). doi: [10.1038/s43587-021-00152-1](https://doi.org/10.1038/s43587-021-00152-1); pmid: 35368774
25. S. Horvath *et al.*, Pan-primate studies of age and sex. *Geroscience* (2023). doi: [10.1007/s11357-023-00878-3](https://doi.org/10.1007/s11357-023-00878-3); pmid: 493860
26. G. S. Wilkinson *et al.*, DNA methylation predicts age and provides insight into exceptional longevity of bats. *Nat. Commun.* **12**, 1615 (2021). doi: [10.1038/s41467-021-21900-2](https://doi.org/10.1038/s41467-021-21900-2); pmid: 33712580

27. S. Horvath *et al.*, DNA methylation aging and transcriptomic studies in horses. *Nat. Commun.* **13**, 40 (2022). doi: [10.1038/s41467-021-27754-y](https://doi.org/10.1038/s41467-021-27754-y); pmid: 35013267
28. G. M. Pinho *et al.*, Hibernation slows epigenetic ageing in yellow-bellied marmots. *Nat. Ecol. Evol.* **6**, 418–426 (2022). doi: [10.1038/s41559-022-01679-1](https://doi.org/10.1038/s41559-022-01679-1); pmid: 35256811
29. S. Horvath *et al.*, DNA methylation clocks for dogs and humans. *Proc. Natl. Acad. Sci. U.S.A.* **119**, e2120887119 (2022). doi: [10.1073/pnas.2120887119](https://doi.org/10.1073/pnas.2120887119); pmid: 35580182
30. K. J. Peters *et al.*, An epigenetic DNA methylation clock for age estimates in Indo-Pacific bottlenose dolphins (*Tursiops aduncus*). *Evol. Appl.* **16**, 126–133 (2022). pmid: 36699128
31. P. Chiavellini *et al.*, Hippocampal DNA methylation, epigenetic age and spatial memory performance in young and old rats. *J. Gerontol. A Biol. Sci. Med. Sci.* **77**, 2387–2394 (2022). doi: [10.1093/gerona/giac153](https://doi.org/10.1093/gerona/giac153); pmid: 35917578
32. S. P. Blomberg, T. Garland Jr., A. R. Ives, Testing for phylogenetic signal in comparative data: Behavioral traits are more labile. *Evolution* **57**, 717–745 (2003). pmid: 12778543
33. P. Langfelder, S. Horvath, WGCNA: An R package for weighted correlation network analysis. *BMC Bioinformatics* **9**, 559 (2008). doi: [10.1186/1471-2105-9-559](https://doi.org/10.1186/1471-2105-9-559); pmid: 19114008
34. P. Langfelder, R. Luo, M. C. Oldham, S. Horvath, Is my network module preserved and reproducible? *PLoS Comput. Biol.* **7**, e1001057 (2011). doi: [10.1371/journal.pcbi.1001057](https://doi.org/10.1371/journal.pcbi.1001057); pmid: 21283776
35. D. Szklarczyk *et al.*, Correction to 'The STRING database in 2021: Customizable protein-protein networks, and functional characterization of user-uploaded gene/measurement sets'. *Nucleic Acids Res.* **49**, 10800 (2021). doi: [10.1093/nar/gkab835](https://doi.org/10.1093/nar/gkab835); pmid: 34530444
36. A. Barrat, M. Barthélemy, R. Pastor-Satorras, A. Vespignani, The architecture of complex weighted networks. *Proc. Natl. Acad. Sci. U. S. A.* **101**, 3747–3752 (2004). doi: [10.1073/pnas.0400087101](https://doi.org/10.1073/pnas.0400087101); pmid: 15007165
37. H. Pilcher, Money for old mice. *Nature* **10.1038/news030915-13** (2003). doi: [10.1038/news030915-13](https://doi.org/10.1038/news030915-13)
38. V. Acosta-Rodríguez *et al.*, Circadian alignment of early onset caloric restriction promotes longevity in male C57BL/6J mice. *Science* **376**, 1192–1202 (2022). doi: [10.1126/science.abk0297](https://doi.org/10.1126/science.abk0297); pmid: 35511946
39. K. C. Browder *et al.*, In vivo partial reprogramming alters age-associated molecular changes during physiological aging in mice. *Nat. Aging* **2**, 243–253 (2022). doi: [10.1038/s43587-022-00183-2](https://doi.org/10.1038/s43587-022-00183-2); pmid: 37118377
40. A. Krämer, J. Green, J. Pollard Jr., S. Tugendreich, Causal analysis approaches in Ingenuity Pathway Analysis. *Bioinformatics* **30**, 523–530 (2014). doi: [10.1093/bioinformatics/btt703](https://doi.org/10.1093/bioinformatics/btt703); pmid: 24336805
41. H. Vu, J. Ernst, Universal annotation of the human genome through integration of over a thousand epigenomic datasets. *Genome Biol.* **23**, 9 (2022). doi: [10.1186/s13059-021-02572-z](https://doi.org/10.1186/s13059-021-02572-z); pmid: 34991667
42. W. Zhou *et al.*, DNA methylation loss in late-replicating domains is linked to mitotic cell division. *Nat. Genet.* **50**, 591–602 (2018). doi: [10.1038/s41588-018-0073-4](https://doi.org/10.1038/s41588-018-0073-4); pmid: 29610480
43. P. Langfelder, S. Horvath, "Tutorials for the WGCNA package" (2014); <https://horvath.genetics.ucla.edu/html/CoexpressionNetwork/Rpackages/WGCNA/Tutorials>.
44. S. Kumar, G. Stecher, M. Suleski, S. B. Hedges, TimeTree: A resource for timelines, timetrees, and divergence times. *Mol. Biol. Evol.* **34**, 1812–1819 (2017). doi: [10.1093/molbev/msx116](https://doi.org/10.1093/molbev/msx116); pmid: 28387841
45. ENCODE Project Consortium, An integrated encyclopedia of DNA elements in the human genome. *Nature* **489**, 57–74 (2012). doi: [10.1038/nature11247](https://doi.org/10.1038/nature11247); pmid: 22955616
46. A. Haghani, A. T. Lu, S. B. Kwon, A. Arneson, J. Ernst, S. Horvath, Data for: DNA methylation networks underlying mammalian traits, Zenodo (2023). doi: [10.5281/zenodo.8180547](https://doi.org/10.5281/zenodo.8180547)

ACKNOWLEDGMENTS

This is Duke Lemur Center publication #1563. **Funding:** The majority of the funding was contributed by the Paul G. Allen Frontiers Group (S.H.) and Open Philanthropy (S.H.). Additional financial support for specific aspects of data generation was obtained from the following sources: National Geographic Society grant 8941-11 (B.L.), British Heart Foundation (FS/18/39/33684 to D.V.), Wellcome (WT202878/Z/16/Z to D.T.O.), European Research Council (788937 to D.T.O.), Cancer Research UK (20412 to D.T.O.), Max Planck Research Group Award from the Max Planck Gesellschaft (S.C.V.), UKRI Future Leaders Fellowship (MR/T021985/1 to S.C.V.), DST-NRF SARChI chair of Mammalian Behavioral Ecology and Physiology (GUN 64756 to N.C.B.), Science Foundation Ireland Future Frontiers 19/FFP/6790 (ECT), National Institute on Aging Intramural Research Program, NIH (J.A.M.), U01 AG060908 (S.H.), AG055841 (K.M.), and AG043930/AG/NIA (R.W.W.), National Institute of Health AG065403 (V.N.G.), AG047200 (V.N.G.), AG067782 (V.N.G.), and AG076607 (V.N.G.), AG047200 (V.G.), AG045795 (T.G.), AG072736 (T.G.), NIA 1R21AG078784 (K.E.S.), OOD 1R21OD022988 (K.E.S.), National Science Foundation IOS 2017803 (K.E.S.), DEB 1854469 (K.E.S.), AG047200 (A. S.), Milky Way Research Foundation (V.G.), A.H. Schultz Foundation, Department of Evolutionary Anthropology, University of Zurich (M.K.), Leverhulme Trust RPG-2019-404 and Royal Society of Edinburgh Research Reboot Grant 1107 (A. Pederson), UCLA Jonsson Comprehensive Cancer Center and Eli and Edythe Broad Center of Regenerative Medicine and Stem Cell Research Ablon Scholars Program (J.E.), funds provided by the College of Computer, Mathematical and Natural Sciences at the University of Maryland, College Park (G.S.W.), Taronga Conservation Society Australia (J.K.O.), S.C.V. was supported by a Max Planck Research

Group Award from the Max Planck Gesellschaft and a UKRI Future Leaders Fellowship (MR/T021985/1). N.C.B. was funded by a DST-NRF SARChI chair of Mammalian Behavioral Ecology and Physiology (GUN 64756). A.N.A. was funded by DSFP, King Saud University, Riyadh, Saudi Arabia. K.J.P. was supported by a postdoctoral grant from the University of Zurich. Collection of plains zebra samples was supported by the National Geographic Society to B.L. (8941-11). **Author contributions:** Conceptualization: S.H., A.H.; Formal analysis: A.H., C.Z.L., A.T.L., Q.Y., J.Z.H.; Investigation: all authors; Visualization: A.H., C.Z.L.; Funding acquisition: S.H., B.L., D.V., D.T.O., S.C.V., N.C.B., ECT, J.A.M.; Project administration: S.H.; Supervision: S.H.; Writing – original draft: A.H., C.Z.L.; Writing – review and editing: A.H., S.H., K.R., J.E., and remaining authors. **Competing interests:** S.H., A.A., and J.E. are inventors on patent/patent application number W02020150705 held/submitted by the University of California, Los Angeles that covers the mammalian methylation array technology. S.H. and R.T.B. are founders of the nonprofit Epigenetic Clock Development Foundation, which has licensed several patents from UC Regents and distributes the mammalian methylation array. **Data and materials availability:** All data from the Mammalian Methylation Consortium are posted on the Gene Expression Omnibus website (complete dataset: GSE223748). Subsets of the data sets can also be downloaded from accession numbers, GSE174758, GSE184211, GSE184213, GSE184215, GSE184216, GSE184218, GSE184220, GSE184221, GSE184224, GSE190660, GSE190661, GSE190662, GSE190663, GSE190664, GSE174544, GSE190665, GSE174767, GSE184222, GSE184223, GSE174777, GSE174778, GSE173330, GSE164127, GSE147002, GSE147003, GSE147004. The mammalian array platform is distributed by the nonprofit Epigenetic Clock Development Foundation (<https://clockfoundation.org/>). The mammalian data can also be downloaded from the Clock Foundation web page: <https://clockfoundation.org/MammalianMethylationConsortium>. The manifest file of the mammalian array, genome annotations of the CpGs, and codes can be found on Zenodo (46). **License information:** Copyright © 2023 the authors, some rights reserved; exclusive licensee American Association for the Advancement of Science. No claim to original US government works. <https://www.science.org/about/science-licenses-journal-article-reuse>

SUPPLEMENTARY MATERIALS

[science.org/doi/10.1126/science.abq5693](https://doi.org/10.1126/science.abq5693)
Materials and Methods
Supplementary Text
Figs. S1 to S32
Tables S1 to S24
References (47–95)
MDAR Reproducibility Checklist
Data S1 to S19

Submitted 19 April 2022; resubmitted 13 June 2022
Accepted 21 June 2023
[10.1126/science.abq5693](https://doi.org/10.1126/science.abq5693)

DNA methylation networks underlying mammalian traits

Amin Haghani, Caesar Z. Li, Todd R. Robeck, Joshua Zhang, Ake T. Lu, Julia Ablaeva, Victoria A. Acosta-Rodriguez, Danielle M. Adams, Abdulaziz N. Alagaili, Javier Almunia, Ajoy Aloysius, Nabil M.S. Amor, Reza Ardehali, Adriana Arneson, C. Scott Baker, Gareth Banks, Katherine Belov, Nigel C. Bennett, Peter Black, Daniel T. Blumstein, Eleanor K. Bors, Charles E. Breeze, Robert T. Brooke, Janine L. Brown, Gerald Carter, Alex Caulton, Julie M. Cavin, Lisa Chakrabarti, Ioulia Chatzistamou, Andreas S. Chavez, Hao Chen, Kaiyang Cheng, Priscila Chiavellini, Oi-Wa Choi, Shannon Clarke, Joseph A. Cook, Lisa N. Cooper, Marie-Laurence Cossette, Joanna Day, Joseph DeYoung, Stacy Dirocco, Christopher Dold, Jonathan L. Dunnum, Erin E. Ehmke, Candice K. Emmons, Stephan Emrich, Ebru Erbay, Claire Erlacher-Reid, Chris G. Faulkes, Zhe Fei, Steven H. Ferguson, Carrie J. Finno, Jennifer E. Flower, Jean-Michel Gaillard, Eva Garde, Livia Gerber, Vadim N. Gladyshev, Rodolfo G. Goya, Matthew J Grant, Carla B. Green, M. Bradley Hanson, Daniel W. Hart, Martin Haulena, Kelsey Herrick, Andrew N. Hogan, Carolyn J. Hogg, Timothy A. Hore, Taosheng Huang, Juan Carlos Izpisua Belmonte, Anna J. Jasinska, Gareth Jones, Eve Jourdain, Olga Kashpur, Harold Katcher, Etsuko Katsumata, Vimala Kaza, Hippokratis Kiaris, Michael S. Kobor, Pawel Kordowitzki, William R. Koski, Michael Krtzen, Soo Bin Kwon, Brenda Larison, Sang-Goo Lee, Marianne Lehmann, Jean-Francois Lematre, Andrew J. Levine, Xinmin Li, Cun Li, Andrea R. Lim, David T. S. Lin, Dana M. Lindemann, Schuyler W. Liphardt, Thomas J. Little, Nicholas Macoretta, Dewey Maddox, Craig O. Matkin, Julie A. Mattison, Matthew McClure, June Mergl, Jennifer J. Meudt, Gisele A. Montano, Khyobeni Mozhui, Jason Munshi-South, William J. Murphy, Asieh Naderi, Martina Nagy, Pritika Narayan, Peter W. Nathanielsz, Ngoc B. Nguyen, Christof Niehrs, Batsaikhan Nyamsuren, Justine K. OBrien, Perrie OTierney Ginn, Duncan T Odom, Alexander G. Ophir, Steve Osborn, Elaine A. Ostrander, Kim M. Parsons, Kimberly C. Paul, Amy B. Pedersen, Matteo Pellegrini, Katharina J. Peters, Jessica L. Petersen, Darren W. Pietersen, Gabriela M. Pinho, Jocelyn Plassais, Jesse R. Poganik, Natalia A. Prado, Pradeep Reddy, Benjamin Rey, Beate R. Ritz, Jooke Robbins, Magdalena Rodriguez, Jennifer Russell, Elena Rydkina, Lindsay L. Sailer, Adam B. Salmon, Akshay Sanghavi, Kyle M. Schachtschneider, Dennis Schmitt, Todd Schmitt, Lars Schomacher, Lawrence B. Schook, Karen E. Sears, Ashley W. Seifert, Aaron B.A. Shafer, Anastasia V. Shindyapina, Melanie Simmons, Kavita Singh, Ishani Sinha, Jesse Slone, Russel G. Snell, Elham Soltanmohammadi, Matthew L. Spangler, Maria Spriggs, Lydia Staggs, Nancy Stedman, Karen J. Steinman, Donald T Stewart, Victoria J. Sugrue, Balazs Szladovits, Joseph S. Takahashi, Masaki Takasugi, Emma C. Teeling, Michael J. Thompson, Bill Van Bonn, Sonja C. Vernes, Diego Villar, Harry V. Vinters, Ha Vu, Mary C. Wallingford, Nan Wang, Gerald S. Wilkinson, Robert W. Williams, Qi Yan, Mingjia Yao, Brent G. Young, Bohan Zhang, Zhihui Zhang, Yang Zhao, Peng Zhao, Wanding Zhou, Joseph A. Zoller, Jason Ernst, Andrei Seluanov, Vera Gorbunova, X. William Yang, Ken Raj, and Steve Horvath

Science, **381** (6658), eabq5693.

DOI: 10.1126/science.abq5693

Editor's summary

DNA methylation installs a methyl group to cytosine, placing an epigenetic mark that regulates gene expression. Comparative epigenomics combines epigenetic signatures with phylogenetic relationships to understand species characteristics. Haghani *et al.* evaluated methylation levels in highly conserved DNA sequences, profiling ~15,000 samples across 348 mammalian species (see the Perspective by de Mendoza). Phylogenetic trees suggest that the divergence of DNA methylation profiles closely mirrors genetic evolution. Species with longer maximum life spans have developed tidier methylation patterns within the genome, characterized by unique peaks and troughs of methylation. Methylation patterns associated with maximum life spans generally differ from those connected to age or interventions that affect mortality risk in mice. These data provide a rich resource of information for fields including evolutionary biology and longevity research. —Di Jiang

View the article online

<https://www.science.org/doi/10.1126/science.abq5693>

Use of this article is subject to the [Terms of service](#)

Science (ISSN) is published by the American Association for the Advancement of Science. 1200 New York Avenue NW, Washington, DC 20005. The title *Science* is a registered trademark of AAAS.

Copyright © 2023 The Authors, some rights reserved; exclusive licensee American Association for the Advancement of Science. No claim to original U.S. Government Works



Permissions

<https://www.science.org/help/reprints-and-permissions>

Use of this article is subject to the [Terms of service](#)

Science (ISSN) is published by the American Association for the Advancement of Science. 1200 New York Avenue NW, Washington, DC 20005. The title *Science* is a registered trademark of AAAS.
Copyright © 2023 The Authors, some rights reserved; exclusive licensee American Association for the Advancement of Science. No claim to original U.S. Government Works