

THE TORII PROJECT



Condensed Torii Project Estimate

Name	Total Cost
LUMBER	
Total	\$2,224.64
BONDING	
Total	\$198.98
FOUNDATION	
Total	\$571.00
PAINT	
Total	\$630.00
MISCELLANEOUS	
Total	\$182
SubTotal	\$3,806.62
Contingency	\$761.32
Grand Total	\$4,567.94

Current Situation



- Arboretum hires new director Tiffany Faulstich
- Because of Lack of As-Built Drawings on site and presence of underground utilities and roots, building is postponed

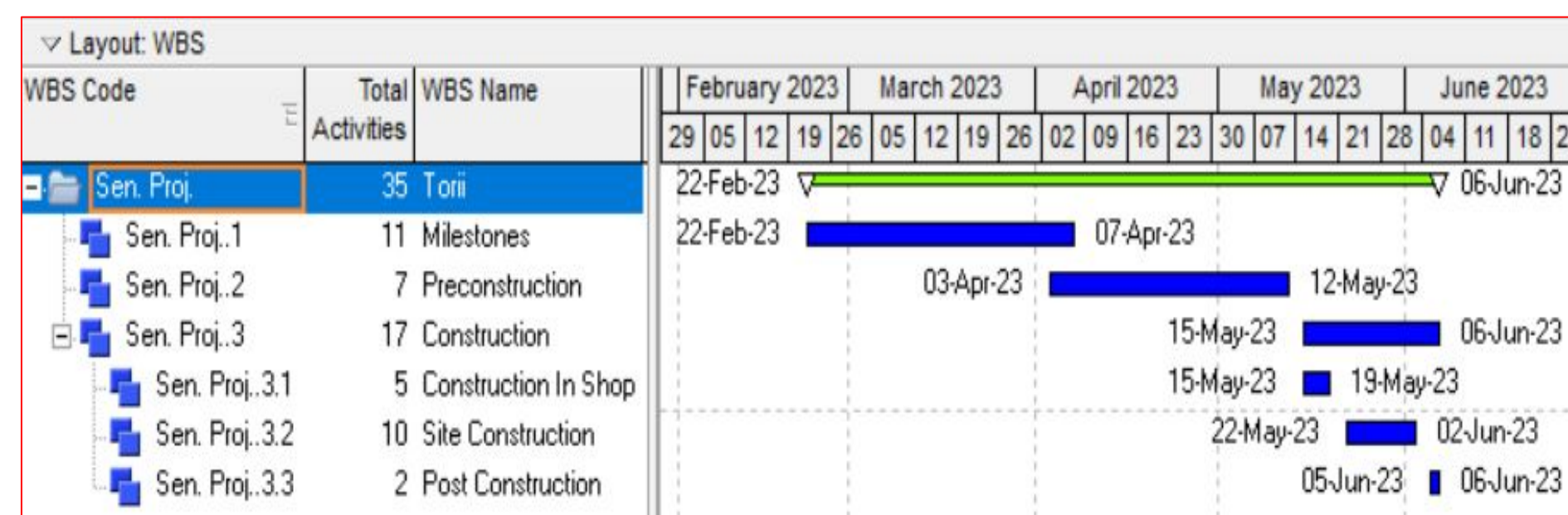
Moving Forward



- Continued work with the Arboretum
- New master plan for the Japanese-inspired garden
- Potential installation project for a future student

Edward Pascua, epascua@calpoly.edu, 408 766-9551
 Jorge Lara, ilaragon@calpoly.edu, 707 603-9166
 Tony Ibarra, aibarr11@calpoly.edu, 805 636-1208

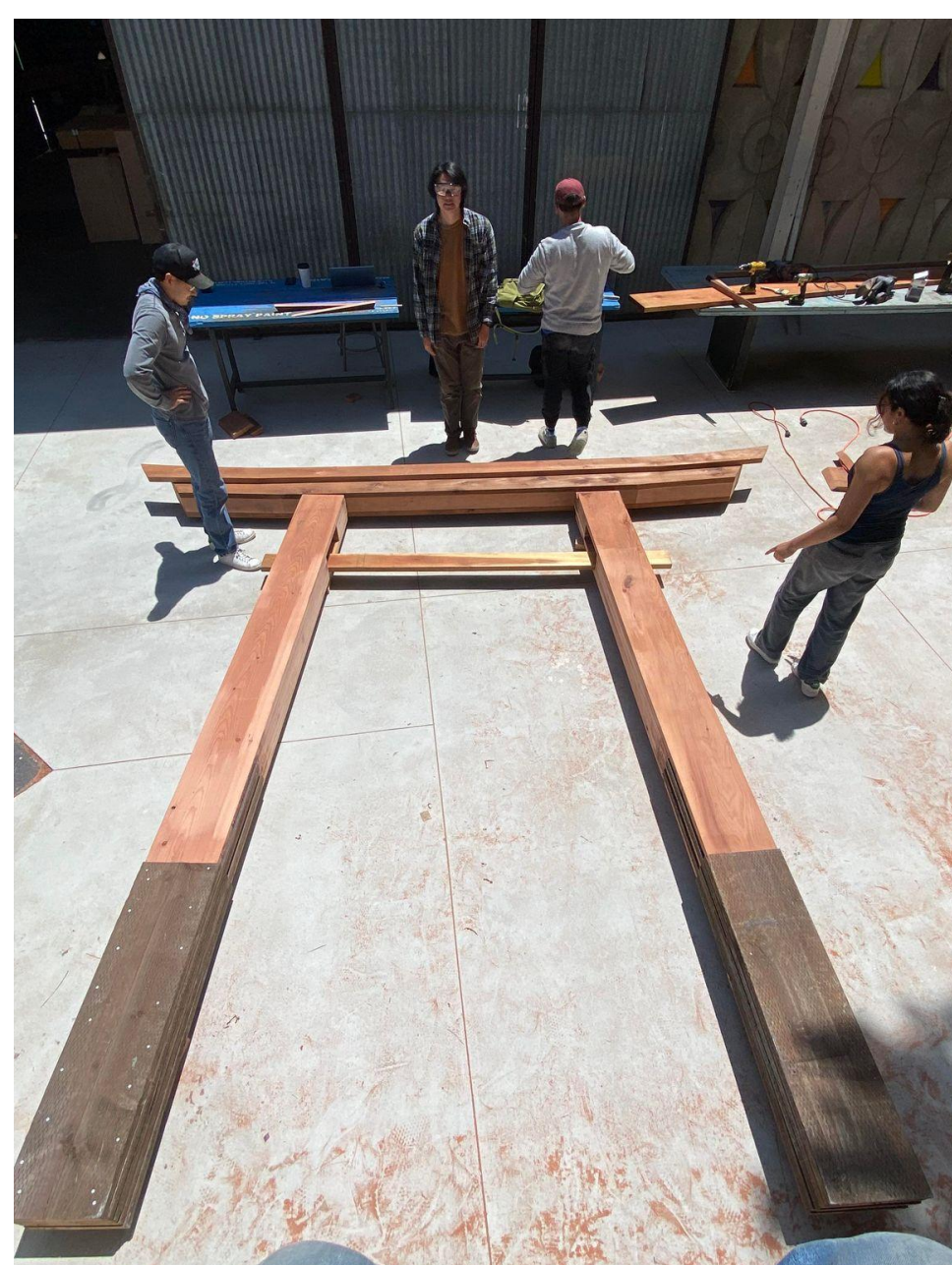
Preconstruction



Garden Design



Fabrication

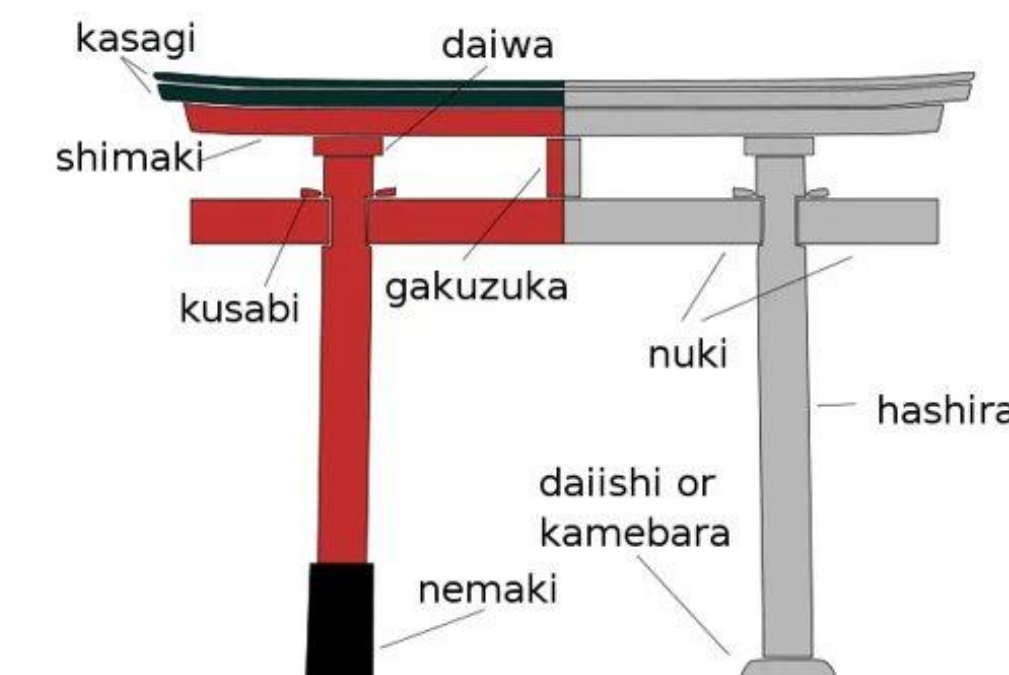


Torii
Project
Gallery
QR Code

Abstract

This is the Torii Project, a project seeking to construct a Torii on the Cal Poly Campus. A Torii is a Japanese gate structure in Japanese Shinto practices, as the structure is a frame for a significant space. The project was initially started by the Japanese Student Association, and has grown over time to become a highly interdisciplinary design-build project involving architects, civil engineers, landscape architects, and construction management majors. The design came from Cal Poly Architecture Alumni Amir Hossler, who has studied the construction of Torii in Japan and was the main source of information for the design. In order to stay committed to the project's promotion of diversity and inclusion, major Japanese American communities were sought for their approval of the project as stakeholders, which included the Japanese Student Association, the Nikkei Student Union, the SLO Buddhist temple, and the Hayashi Family. With help from CAED support shop staff and architecture student Laura Kuffner, process plans were designed and developed as the materials were procured. It will also discuss the permitting process, and the difficulties and roadblocks that slowed progress and the plans going forward to install the final version of the Torii.

What is a Torii?



A Torii is a Japanese Gate structure used to signify a place of importance. It consists of two posts called Hashiras, a middle beam called the Nuki, and two top beams called the Kasagi and Shimaki.

Why are we building a Torii?

- Started by members of the Japanese Student Association (JSA)
- Wish to create a physical "representation" Japanese American Population on the Central Coast
- Promote Diversity and Inclusion Initiatives on the Cal Poly Campus

