



Apr 27th, 4:30 PM - 5:00 PM

## Here's what to know about the new Puget Sound Vital Signs!

Corinne Noufi  
*Wa Sea Grant*

Mary Ramirez  
*Wa Sea Grant*

Nathalie Hamel  
*Wa Sea Grant*

Follow this and additional works at: <https://cedar.wvu.edu/ssec>

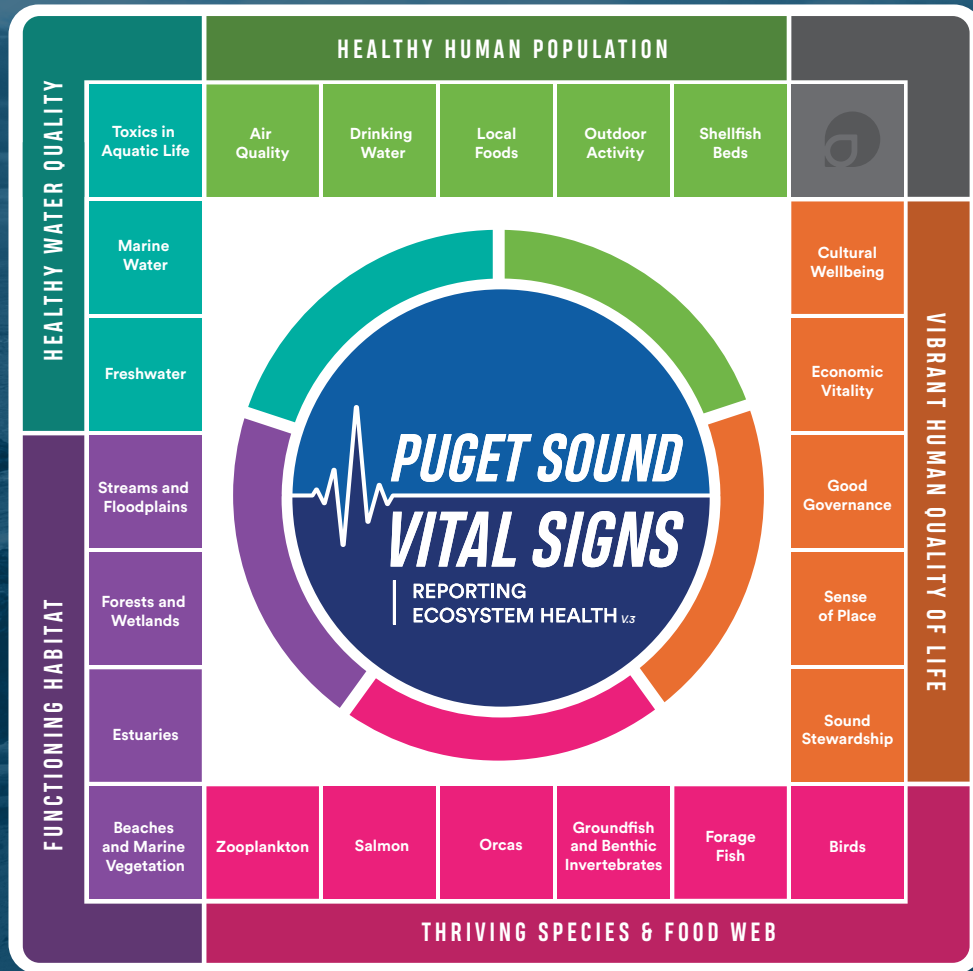
---

Noufi, Corinne; Ramirez, Mary; and Hamel, Nathalie, "Here's what to know about the new Puget Sound Vital Signs!" (2022). *Salish Sea Ecosystem Conference*. 81.  
<https://cedar.wvu.edu/ssec/2022ssec/allsessions/81>

This Event is brought to you for free and open access by the Conferences and Events at Western CEDAR. It has been accepted for inclusion in Salish Sea Ecosystem Conference by an authorized administrator of Western CEDAR. For more information, please contact [westerncedar@wvu.edu](mailto:westerncedar@wvu.edu).

# THE NEW PUGET SOUND VITAL SIGNS

Revision of the Vital Signs, Indicators, and Targets



## VITAL SIGN CHANGES

### New Vital Signs

- Groundfish and Benthic Invertebrates
- Zooplankton

### Re-framed Vital Signs

- Forests and Wetlands
- Streams and Floodplains
- Beaches and Marine Vegetation

### Expanded Vital Signs

- Salmon
- Forage Fish
- Toxics in Aquatic Life
- Marine Water
- Freshwater

## NEW 2022 TARGETS

- Toxics in aquatic life
- Condition of swimming beaches
- Area of harvestable shellfish beds
- Short and long-term eelgrass site status
- Number of natural origin Chinook salmon on spawning grounds
- Number of Southern Resident killer whales



## VITAL SIGNS

Visit the website for details and progress about the indicators included in the Vital Signs.



## VIDEO LINK

Learn more about Vital Signs, indicators, and targets.



## MONITORING TO ACCELERATE RECOVERY

See some of the projects the Partnership funded for the 2021-23 biennium.

The Puget Sound Partnership acknowledges the ancestral and contemporary lands called home by Indian tribes and nations since time immemorial

## REPORTING ON INDICATORS IS POSSIBLE THANKS TO OUR PARTNERS



PUGET SOUND ECOSYSTEM MONITORING PROGRAM