

Connecticut College

Digital Commons @ Connecticut College

Historic Sheet Music Collection

Greer Music Library

1919

Let The Rest Of The World Go By

J. Keirn Brennan

Ernest R. Ball

M. Witmark & Sons
New York

Follow this and additional works at: <https://digitalcommons.conncoll.edu/sheetmusic>

Recommended Citation

Brennan, J. Keirn; Ball, Ernest R.; and Witmark, M. & Sons, "Let The Rest Of The World Go By" (1919).
Historic Sheet Music Collection. 1891.

<https://digitalcommons.conncoll.edu/sheetmusic/1891>

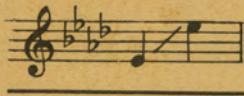
This Score is brought to you for free and open access by the Greer Music Library at Digital Commons @ Connecticut College. It has been accepted for inclusion in Historic Sheet Music Collection by an authorized administrator of Digital Commons @ Connecticut College. For more information, please contact bpancier@conncoll.edu.

The views expressed in this paper are solely those of the author.

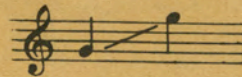
Daphne Swiss

LET THE REST OF THE WORLD GO BY

In Ab, (eb to eb)

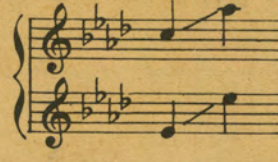
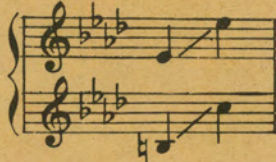


In C (g to g)



Duets

Soprano or
Tenor (*lead*) (eb to eb)
and
Alto or
Baritone (b ♯ to c)



Soprano or
Tenor (c to ab)
and
Mezzo Soprano
or Baritone (*lead*) (eb to eb)



LYRIC BY

J. KEIRN BRENNAN

MUSIC BY

ERNEST R. BALL

| | | |
|--------------------------|------|-----|
| Solo, 2 Keys Ab—C | each | .50 |
| Duet, 2 Keys (see above) | each | .60 |
| 2 Part Female (SA) | | .15 |
| 3 Part Female (SSA) | | .15 |
| 3 Part Mixed (SAB) | | .15 |

PUBLISHED FOR THE FOLLOWING ARRANGEMENTS

| | | | |
|----------------------|-----|-------------------------|-----|
| 3 Part Male (TTB) | .15 | 4 Part Male (TTBB) | .15 |
| 4 Part Female (SSAA) | .16 | Violin and Piano | .60 |
| 4 Part Mixed (SATB) | .15 | Cello and Piano | .60 |
| | | Violin, Cello and Piano | .75 |
| | | Orchestra (Waltz) | .75 |



STANDARD

WHEN PERFORMING THIS COMPOSITION KINDLY GIVE ALL PROGRAM CREDITS TO

M. WITMARK & SONS
NEW YORK

PRINTED IN U.S.A.

Some of the Famous WITMARK Black and White Ballads

PRICE 50c Each

Wm H. GARDNER *Appealingly* **Can't Yo' Heah Me Callin' Caroline** CARO ROMA

Can't yo' heah me call - in' Car - o - line, It's mahheart a call - in' dine. Lord - y how I
 Copyright MCMXIV by M. Witmark & Sons

J. KEIRN BRENNAN *Tenderly, with much expression* **Dear Little Boy Of Mine** ERNEST R. BALL

Boy of mine, Boy of mine, Al - tho' my heart was ach - ing - I seemed to know you'd want to go,
 Copyright MCMXVIII by M. Witmark & Sons

ANNELU BURNS *With much feeling* **I'll Forget You** ERNEST R. BALL

I'll for - get you when I can live with - out the sun - shine, I'll for - get you when I can live with out the
 Copyright MCMXXI by M. Witmark & Sons

J. KEIRN BRENNAN *Tenderly with expression* **Let The Rest Of The World Go By** ERNEST R. BALL

With some one like you, a pal good and true, I'd like to leave it all be - hind and go and
 Copyright MCMXIX by M. Witmark & Sons

HENRY M. NEELY *Moderato* **Mem'ries** HAROLD SANFORD

Mem' - ries, mem' - ries, mem' - ries of you Dear heart, you loved me so — Back through the years
 Copyright MCMXXVIII by M. Witmark & Sons

FRANK PIXLEY *Andantino* **The Message Of The Violet** GUSTAV LUDERS

I bring a breath of spring - time from wood lands where I grew. — There's a kiss up -
 Copyright MCMII by M. Witmark & Sons

DAVE REED Jr. *Maestoso* **Love Me And The World Is Mine** ERNEST R. BALL

I care - not for the stars that shine, — I dare not hope to e'er be thine, — I
 Copyright MCMVI by M. Witmark & Sons

M. WITMARK & SONS RCA Building NEW YORK

To Julie and Carrie

Let The Rest Of The World Go By

Words by
J. KEIRN BRENNAN

Music by
ERNEST R. BALL

Moderately with expression

The piano introduction consists of two staves in 3/4 time, key of B-flat major. The right hand features a melody of eighth and quarter notes, while the left hand provides a harmonic accompaniment with chords and single notes. A dynamic marking of *mf* is present.

With much expression

The vocal line begins with a whole rest, followed by a series of notes corresponding to the lyrics. The melody is simple and expressive.

Is the strug-gle and strife We find in this life Real-ly
Is the fu-ture to hold Just strug-gles for gold While the

The piano accompaniment continues with a melody in the right hand and chords in the left hand. A dynamic marking of *p* is present.

The vocal line continues with notes corresponding to the lyrics. The melody is simple and expressive.

worth while, aft - er all? I've been wish - ing to - day I could
real world waits out - side, A - way out on the breast Of the

The piano accompaniment continues with a melody in the right hand and chords in the left hand.

Copyright MCMXIX by M. Witmark & Sons
International Copyright Secured

just run a - way, Out where the west winds call. _____
 won - der - ful West, A - cross the great Di - vide? _____

rit.

REFRAIN *Tenderly with expression*

With some one like you, a pal good and true, I'd like to leave it

p - - f

all be - hind, and go and find Some place that's known to God a -

lone, Just a spot to call our own. We'll find per-fect

peace, Where joys nev-er cease, Out there be-neath a kind-ly sky,

kind-ly

sky
— We'll build a sweet lit-tle nest some-where in the west, And let the

porta 1. 2.
rest of the world go by. With by.

BASS AND BARITONE SONGS

SUITABLE FOR HOME, RADIO OR CONCERT

| | | | |
|--|---------------------------|--------------------|---------|
| AHI SWEET MYSTERY OF LIFE (From "Naughty Marietta") | Ab (Eb to Eb) Bb-C-D | Herbert Silvers | Straus |
| APRIL SHOWERS (From "Bombo") | G (C to E) | Mills | Edwards |
| ANY OLD PORT IN A STORM | D (A to B) F-Ab | Woods | Furth |
| A-ROVING I WILL GO | C (C to E) | Petrie | Dance |
| ASLEEP IN THE DEEP | D (D to B) F-G-Bb | | Olcott |
| BAFFLED | A (G to D) C | Robinson | |
| BALLAD OF LITTLE BILLEE | Bb (Bb to D) C-Eb | O'Hara | |
| BEGIN THE BEGUINE (From "Jubilee") | C (Bb to F) | Porter | Herbert |
| BODY AND SOUL | C (A to E) | Green | |
| BROTHERS OF ROMANY | C Min (B to C) Emin-Gmin. | Stone | Porter |
| CAN'T YOU HEAR ME CALLIN' CAROLINE | C (A to C) Eb-F-G | Roma | |
| CHERIE, I LOVE YOU | G (B to E) Bb-C | Goodman | |
| CROSS YOUR HEART (From "Queen High") | Bb (C to E) | Gensler | Deppen |
| DAWN BROUGHT ME LOVE AND YOU, THE | Ab (Bb to Eb) Bb-C-D | Kountz | Deppen |
| DEAR LITTLE BOY OF MINE | Bb (C to D) Eb-F | Ball | Romberg |
| DESERT SONG, THE (From "The Desert Song") | C (C to E) | Romberg | Ball |
| FIVE HUNDRED THOUSAND DEVILS | Bb (C to F) | Melville | Bates |
| GARDEN OF ROSES, THE | Ab (C to E) | Schmid | Petrie |
| GLO'STERMAN, THE | D (C to E) | Blount | |
| GOOD-WILL TO MEN | Eb (Bb to Eb) G | O'Hara | |
| GYPSY LOVE SONG (From "Fortune Teller") | A (A to C#) Bb-C-Eb | Herbert | |
| HEIDELBERG STEIN SONG (From "The Prince of Pilsen") | Eb (Bb to Eb) G-Bb | Luders | |
| HERE IN MY ARMS (From "Dearest Enemy") | F (C to G) | Rogers | |
| HERE'S LOVE AND SUCCESS TO YOU | Ab (C to Eb) Bb-C | Ball | |
| HO! FOR THE BRINY DEEP | C (D to E) | Ball | |
| HOME TO MY JOY AND THEE | Bb (G to C) C-Eb-F | Vanderpool | |
| HOUSE WITH NOBODY IN IT, THE | C (C to Eb) E | Montgomery | |
| HOWDY DO, MIS' SPRINGTIME | D (A to D) F-G | Guion | |
| HURRAH FOR THE SPANISH MAIN | Eb (Bb to Eb) | Feinbloom | |
| I KISS YOUR HAND MADAME | Eb (Bb to F) | Erwin | |
| I'LL FORGET YOU | F (C to C#) Ab-Bb-C | Ball | |
| I LOST MY HEART IN HEIDELBERG | G (D to E) | Raymond | |
| I LOVE A PARADE | Eb (D to F) | Arlen | |
| IN A LITTLE TOWN NEAR BY | C (C to C) Eb-G | Maley-Turner | |
| IN A MONASTERY GARDEN (60c) | Eb (Bb to Eb) F-G | Ketelbey | |
| INDIAN LOVE CALL (From "Rose Marie") | Db (Ab to F) Eb-F | Friml | |
| IN THE GARDEN OF MY HEART | Bb (Bb to D) C-Eb-F | Ball | |
| I SING AS I SAIL WITH THE ROLICKING GALE | F (Bb to D) | Krouse | |
| ITALIAN STREET SONG (From "Naughty Marietta") | D (D to F) F | Herbert | |
| IT'S HOME TO ME | Eb (Bb to Eb) F-Ab | Lockhart | |
| I WANT TO BE HAPPY (From "No No Nanette") | C (C to E) | Youmans | |
| I WANT WHAT I WANT WHEN I WANT IT (From "Mlle. Modiste") | G (A to D) Bb | Herbert | |
| JUNE BROUGHT THE ROSES | F (A to D) Ab-Bb-C | Openshaw | |
| JUST A COTTAGE SMALL (By a Waterfall) | C (C to D) Eb-F | Hanley | |
| JUST A MEMORY (From "Manhattan Mary") | F (C to E) | Henderson | |
| KISS IN THE DARK | C (C# to E) D-Eb | Herbert | |
| KISS ME AGAIN (From "Mlle. Modiste") | F (A to F) G-A-Bb | Herbert | |
| L'AMOUR-TOUJOURS-L'AMOUR (Love Everlasting) | C (B to G) D-F | Friml | |
| LAMPLIT HOUR, THE | Ab (C to Eb) Bb-C | Penn | |
| LET THE REST OF THE WORLD GO BY | Ab (Eb to Eb) C | Ball | |
| LITTLE BIT OF HEAVEN, SHURE THEY CALL IT IRELAND, A | F (A to D) Ab-Bb-C | Ball | |
| LITTLE BROWN HAND | Bb (C to D) C-Eb | Penn | |
| LOVE ME AND THE WORLD IS MINE | Bb (C to Eb) C-Db-Eb | Ball | |
| LOVE NEST, THE (From "Mary") | Eb (Bb to F) | Hirsch | |
| LOVE SENDS A LITTLE GIFT OF ROSES | C (B to D) D-Eb-F | Openshaw | |
| MA BELLE (From "The Three Musketeers") | D (B to F) | Friml | |
| MESSAGE OF THE VIOLET, THE (From "Prince of Pilsen") | D (D to E) F | Luders | |
| MEM'RIES (Golden Memory Days) | Ab (Bb to Eb) Bb-C | Sanford | |
| MOONBEAMS (From "The Red Mill") | Bb (Bb to Eb) C-Eb | Herbert | |
| MOON MADNESS | A (A to D) C-Eb | Cadman | |
| MOTHER MACREE | Bb (Bb to D) C-D-F | Ball-Olcott | |
| MY HEART STOOD STILL (From "A Connecticut Yankee") | F (C to D) | Rogers | |
| MY HERO (From "The Chocolate Soldier") | Bb (Bb to Eb) D | | |
| MY OWN UNITED STATES (From "When Johnny Comes Marching Home") | F (B to C) Ab-Bb-C | | |
| MY PALS ARE MY PIPE AND MY STEIN | Bb (Bb to F) | | |
| MY TIME IS YOUR TIME | Eb (D to F) | | |
| MY WILD IRISH ROSE | Bb (D to E) C-D | | |
| NEAPOLITAN LOVE SONG (From "Princess Pat") | C (B to D) D-F-G | | |
| NIGHT AND DAY (From "Gay Divorcee") | Eb (Bb to Eb) | | |
| OH LUCINDY | C (C to E) | | |
| OH MISS HANNAH | D (D to E) Bb-F | | |
| ONE ALONE (From "Desert Song") | Ab (C to F) | | |
| ONE MORE DAY | F (C to C) Ab-Bb-C | | |
| ON THE NODAWAY ROAD | Eb (Bb to Eb) | | |
| OUT ON THE STORM SWEEP SEA | Eb (E to Eb) | | |
| PININ' FOR DAT FREEDOM DAY PLANTATION | F (C to F) | | |
| PLAY GYPSIES—DANCE GYPSIES (From "Countess Maritza") | Db (A to Eb) Eb-F | | |
| RESIGNATION | D (D to F) | | |
| RIFF SONG, THE (From "Desert Song") | Bb (D to Eb) C-Db-Eb | | |
| ROSE MARIE (From "Rose Marie") | F (D to G) | | |
| | Eb (Eb to G) | | |
| SMILIN' THROUGH | C (C to D) D-Eb-F-G | | |
| SOMETIMES I'M HAPPY (From "Hit The Deck") | F (E to F) | | |
| SOMEWHERE A VOICE IS CALLING (60c) | D (B to D) Eb-F-G | | |
| SONG OF THE NEW DAWN | F (C to F) Ab | | |
| SORTER MISS YOU | C (B to C) D-Eb-F-G | | |
| SPRING'S A LOVABLE LADY | Eb (C to Eb) F-G-A | | |
| STAND FORTH AND FIGHT STOUTHEARTED MEN (From "The New Moon") | C Min (A to Db) E Min. | | |
| STRIKE UP THE BAND (From "Strike Up The Band") | Ab (C to F) | | |
| SUNRISE AND YOU | Bb (F to F) | | |
| SUNSHINE OF YOUR SMILE, THE | F (C to E) Ab-Bb | | |
| SWEET ADELIN | D (B to D) Eb-F-G | | |
| SWEET THOUGHTS OF HOME | Bb (D to Eb) | | |
| | Db (Ab to Db) Eb-G | | |
| TANG OF THE SEA, THE | C (C to F) | | |
| TEA FOR TWO (From "No No Nanette") | Ab (Eb to Eb) | | |
| TELL ME PRETTY MAIDEN (From "Floradora") | Eb (Bb to Eb) | | |
| THAT OLD IRISH MOTHER OF MINE | Eb (Bb to D) G-Bb | | |
| THAT WONDERFUL MOTHER OF MINE | Ab (Bb to Eb) Bb-C-Eb | | |
| THERE IS A GARDEN IN MY HEART | C (B to D) Eb-F | | |
| THERE'S A LONG, LONG TRAIL | F (C to C) G-Ab-Bb-C | | |
| THINE ALONE (From "Eileen") | C (A to D) Eb-F-G | | |
| THOSE SONGS MY MOTHER USED TO SING | C (B to C) Eb-F-G | | |
| TILL THE SANDS OF THE DESERT GROW COLD | G (A to C) Bb-C-D | | |
| TOMASSO ROTUNDO (Basso Profundo) | C (C to C) Eb | | |
| TO ONE BELOVED | F (C to D) Ab | | |
| TOO-RA-LOO-RA-LOO-RAL THAT'S AN IRISH LULLABY | C (C to C) Eb-F-G | | |
| TO THE LAND OF MY OWN ROMANCE (From "The Enchantress") | Bb (D to D) C-Eb | | |
| TRADER JOHN | A Min (A to C) C min. | | |
| TRAMP! TRAMP! TRAMP! (From "Naughty Marietta") | C (C to E) | | |
| VALENCIA (From "The Great Temptations") | F (C to E) | | |
| VIENNA, MY CITY OF DREAMS (Wien, Du Stadt Meiner Traume) | F (B to D) G-Bb | | |
| VOLCANO, THE | C (B to D) | | |
| WEST OF THE GREAT DIVIDE | C (D to D) Eb-F-G | | |
| WHEN DAY IS DONE | Bb (Db to G) | | |
| WHEN IRISH EYES ARE SMILING | C (C to E) D-F | | |
| WHEN OLD FRIENDS MEET AGAIN | F (C to D) | | |
| WHEN YOU'RE AWAY (From "The Only Girl") | D (A to D) F-G | | |
| WHERE THE RIVER SHANNON FLOWS | C (C to D) Eb-F-G | | |
| WHO KNOWS? | Bb (Bb to C) Db-Eb-F | | |
| WILD FLOWER (From "Wildflower") | C (C to E) | | |
| WITH A SONG IN MY HEART (From "Spring Is Here") | Eb (D to F) | | |
| YOUR EYES HAVE TOLD ME SO | Eb (Bb to Eb) F-Ab | | |
| YOURS IS MY HEART ALONE (Dein Ist Mein Ganzes Herz) | Ab (Bb to Eb) C-D | | |

PRICE 50c EACH—unless otherwise indicated

MUSIC PUBLISHERS HOLDING CORPORATION • RCA Building • NEW YORK