



Cloud top heights and aerosol layer properties from EarthCARE lidar observations: the A-CTH and A-ALD products

Ulla Wandinger¹, Moritz Haarig¹, Holger Baars¹, David Donovan², and Gerd-Jan van Zadelhoff²

¹Leibniz Institute for Tropospheric Research, Leipzig, Germany

²Royal Netherlands Meteorological Institute, De Bilt, the Netherlands

Correspondence: Ulla Wandinger (ulla.wandinger@tropos.de)

Received: 15 April 2023 – Discussion started: 27 April 2023

Revised: 10 July 2023 – Accepted: 27 July 2023 – Published: 7 September 2023

Abstract. The high-spectral-resolution Atmospheric Lidar (ATLID) on the Earth Cloud, Aerosol and Radiation Explorer (EarthCARE) provides vertically resolved information on aerosols and clouds with unprecedented accuracy. Together with the Cloud Profiling Radar (CPR), the Multi-Spectral Imager (MSI), and the Broad-Band Radiometer (BBR) on the same platform, it allows for a new synergistic view on atmospheric processes related to the interaction of aerosols, clouds, precipitation, and radiation at the global scale. This paper describes the algorithms for the determination of cloud top height and aerosol layer information from ATLID Level 1b (L1b) and Level 2a (L2a) input data. The ATLID L2a Cloud Top Height (A-CTH) and Aerosol Layer Descriptor (A-ALD) products are developed to ensure the provision of atmospheric layer products in continuation of the heritage from the Cloud–Aerosol Lidar and Infrared Pathfinder Satellite Observations (CALIPSO). Moreover, the products serve as input for synergistic algorithms that make use of data from ATLID and MSI. Therefore, the products are provided on the EarthCARE joint standard grid (JSG). A wavelet covariance transform (WCT) method with flexible thresholds is applied to determine layer boundaries from the ATLID Mie co-polar signal. Strong features detected with a horizontal resolution of 1 JSG pixel (approximately 1 km) or 11 JSG pixels are classified as thick or thin clouds, respectively. The top height of the uppermost cloud layer together with information on cloud layering are stored in the A-CTH product for further use in the generation of the ATLID-MSI Cloud Top Height (AM-CTH) synergy product. Aerosol layers are detected as weaker features at a resolution of 11 JSG pixels. Layer-mean optical properties are calculated from the ATLID L2a Extinction, Backscatter and Depolarization (A-

EBD) product and stored in the A-ALD product, which also contains the aerosol optical thickness (AOT) of each layer, the stratospheric AOT, and the AOT of the entire atmospheric column. The latter parameter is used to produce the synergistic ATLID-MSI Aerosol Column Descriptor (AM-ACD) later in the processing chain. Several quality criteria are applied in the generation of A-CTH and A-ALD, and respective information is stored in the products. The functionality and performance of the algorithms are demonstrated by applying them to common EarthCARE test scenes. Conclusions are drawn for the application to real-world data and the validation of the products after the launch of EarthCARE.

1 Introduction

The Earth Cloud, Aerosol and Radiation Explorer (EarthCARE) developed by the European Space Agency (ESA) and the Japan Aerospace Exploration Agency (JAXA) carries four sensors on one platform, a cloud-profiling radar (CPR), a high-spectral-resolution cloud and aerosol lidar (ATLID), a cloud and aerosol multi-spectral imager (MSI), and a three-view broadband radiometer (BBR) (Illingworth et al., 2015; Wehr et al., 2023). With its highly synergistic approach, the mission aims at unprecedented accuracy in the observation of aerosols and clouds and their impact on the global radiation budget. The EarthCARE mission requirements are based upon the need to derive the radiative flux at the top of the atmosphere (TOA) with an accuracy of 10 W m^{-2} for a 100 km^2 snapshot view of the atmosphere. Accordingly, highly resolved information on the presence and properties of aerosol and cloud layers for respective three-dimensional

(3D) scenes is needed. The active instruments ATLID and CPR contribute with vertically resolved measurements for a two-dimensional (2D) atmospheric cross section along the satellite track (e.g., van Zadelhoff et al., 2023a; Donovan et al., 2023a; Kollias et al., 2023; Mroz et al., 2023; Irbah et al., 2023). The passive imager MSI provides observations of columnar aerosol and cloud properties across a 150 km wide swath (Docter et al., 2023; Hünerbein et al., 2023b, a), which are used to extend the 2D cross sections from lidar and radar into the 3D domain (Haarig et al., 2023; Qu et al., 2023). With this approach, 3D radiation modeling and closure assessments become possible; i.e., modeled TOA radiances and fluxes can be compared with those derived from BBR measurements (Cole et al., 2022; Barker et al., 2023).

As a prerequisite for the synergistic algorithms, highly accurate information on cloud top height (CTH) and aerosol layering along track is needed from the lidar observations. The EarthCARE mission requirements postulate an accuracy of 300 m for the determination of CTH for both ice and water clouds. With respect to aerosols, a detection threshold of 0.05 for aerosol optical thickness (AOT) and an accuracy of the vertical layering of 500 m for a horizontal resolution of 10 km have been defined (Wehr et al., 2023). EarthCARE's 355 nm high-spectral-resolution lidar ATLID is designed to achieve these goals by measuring atmospheric backscattering with a horizontal resolution of 285 m (accumulation of two laser shots on board the satellite) and a vertical resolution of approximately 100 m up to 20 km and 500 m from 20 to 40 km height (Wehr et al., 2023). The atmospheric return is split into a co-polar and a cross-polar component with respect to the linear polarization of the emitted laser beam. The co-polar component is further separated into a molecular (Rayleigh) and a particulate (Mie) part. The geolocated, calibrated, and fully corrected signals are available in the ATLID Level 1b (L1b) product A-NOM (Eisinger et al., 2023). From the three independent signals, and by using the ATLID Level 2a (L2a) Feature Mask product (A-FM) as an additional input (van Zadelhoff et al., 2023a), the profiles of particle extinction and backscatter coefficients, lidar ratio, and particle linear depolarization ratio at 355 nm are derived along the track of the satellite, and the detected targets are classified with the ATLID Profile Products processor (A-PRO). The variables are provided in the ATLID L2a products A-EBD (ATLID Extinction, Backscatter, Depolarization), A-AER (ATLID Aerosol), and A-TC (ATLID Target Classification). These products maintain the native vertical resolution of the L1b signals, while the horizontal resolution is adapted to the measurement conditions and depends on the detected features (clouds and aerosols), the actual signal-to-noise ratio (SNR), and the applied algorithms (Donovan et al., 2023a).

In this paper, we describe the algorithms for determining the lidar stand-alone L2a products ATLID Cloud Top Height (A-CTH) and ATLID Aerosol Layer Descriptor (A-ALD). These products are generated with the ATLID Layer Products processor (A-LAY) and have specifically been de-

veloped as prerequisites for the synergistic algorithms that produce the ATLID-MSI Cloud Top Height (AM-CTH) and the ATLID-MSI Aerosol Column Descriptor (AM-ACD; see EarthCARE production model, Eisinger et al., 2023). Therefore, they are provided with a predefined horizontal resolution on the EarthCARE joint standard grid (JSG; Eisinger et al., 2023). Layer detection is based on a wavelet covariance transform (WCT) technique with thresholds, which is applied to the Mie co-polar signal taken from A-NOM. The thresholds can be configured such that the algorithm is suited for aerosol as well as cloud layer identification. Input from A-EBD is used to calculate columnar and layer-mean aerosol properties. In addition, the detected aerosol and cloud features are compared with the A-TC product, and levels of consistency are reported. In this way, differences resulting from the different feature finding algorithms, and thus also uncertainties in the detection and discrimination of aerosols and thin clouds, can be identified.

The cloud part of the algorithm focuses on the detection of upper cloud boundaries. The A-CTH product contains information on the top height of the uppermost cloud layer and on the occurrence of multiple layers, when the upper layer is semi-transparent and penetrated by the laser beam. This information is especially useful in the context of CTH retrievals with passive imagers in general and MSI in particular, which are strongly biased by semi-transparent clouds (Hünerbein et al., 2023a). Thus, information from A-CTH is used to perform respective corrections to the MSI results along and across track, which are provided in the synergistic AM-CTH product (Haarig et al., 2023).

For aerosol layers, the upper and lower boundaries are given in the A-ALD product. For each detected layer, the mean optical properties (extinction and backscatter coefficients, lidar ratio, particle linear depolarization ratio) and the layer AOT are calculated from the respective profiles of A-EBD. Furthermore, the columnar AOT, the stratospheric AOT, and the sum of layer AOT are stored in the product. The A-ALD product is intended to continue the heritage of aerosol layer information available from the Cloud–Aerosol Lidar and Infrared Pathfinder Satellite Observations (CALIPSO; Vaughan et al., 2009), but at the same time it contains unique optical parameters and thus also supports aerosol typing efforts and synergistic aerosol algorithms. EarthCARE mission requirements call for the quantification of absorbing or non-absorbing aerosols from natural and anthropogenic sources. Information on the spectral AOT is of interest in this context (see, e.g., Wandinger et al., 2023) and can be gained by combining ATLID measurements at 355 nm with MSI observations at 670 nm (over land and ocean) and 865 nm (over ocean) available from the MSI AOT product (M-AOT; Docter et al., 2023). Respective Ångström exponents, together with track-to-swath extrapolations, are provided in the AM-ACD product (Haarig et al., 2023).

The paper is organized as follows. Section 2 gives an overview on the A-CTH and A-ALD products and summa-

izes their contents. The A-LAY algorithms are described in Sect. 3. After an overview of the processor, the selection of the layer detection method is discussed, and the WCT algorithm is introduced, followed by a description of the variables, quality indicators, and consistency parameters contained in the products. Section 4 presents the algorithm performance tests based on the common test scenes from the EarthCARE end-to-end simulator (ECSIM; Donovan et al., 2023b; Qu et al., 2022). Major findings and recommendations for the validation of the products after the launch of EarthCARE are summarized in Sect. 5.

2 ATLID layer products

The A-CTH and A-ALD products belong to the ATLID L2a layer products defined in the ESA EarthCARE production model and product list (Wehr et al., 2023; Eisinger et al., 2023). Since their generation requires input from ATLID L2a profile data, they are produced at the end of the ATLID L2a processing. The products are prerequisites for synergistic ATLID-MSI algorithms and are thus generated on the JSG along the satellite track; i.e., their horizontal resolution is determined by the radar footprint, if radar measurements are available, and fixed to 1 km otherwise. Averaging over 11 JSG pixels is applied to detect aerosol layers and thin clouds with a resolution of about 10 km, according to the mission requirements which stipulate a scene reconstruction based on a 10 km \times 10 km footprint for radiation closure assessments (Wehr et al., 2023). The vertical resolution of the JSG corresponds to the native ATLID resolution, which therefore is maintained in the products.

2.1 ATLID Cloud Top Height (A-CTH)

The major variable contained in the A-CTH product is the top height of the uppermost cloud layer. This information is complemented with a simplified classification of the uppermost cloud, indicating thick, thin, and multi-layer clouds. The CTH is derived for two horizontal resolutions. If a cloud is detected at the native JSG resolution (1 pixel), it is considered to be optically thick and classified as thick cloud accordingly. If the cloud is found only after averaging signals horizontally (11 pixel gliding average), it is classified as thin cloud. If the uppermost cloud layer is penetrated by the laser beam and another cloud top is detected below, the classification is set to multi-layer cloud, and, depending on the applied averaging, it is indicated whether a thin over thick, thin over thin, or thick over thick cloud layering was found.

The A-CTH product contains a quality indicator for the CTH determination in terms of a level of confidence. It is derived by comparing the obtained WCT at the cloud top with the respective threshold value. Furthermore, since two independent methods for the detection of clouds are applied in the generation of ATLID profile and layer products, a level

of consistency is provided. It is calculated by comparing the A-CTH values with the altitude of cloudy pixels in the A-TC product. The mathematical description of the algorithm is given in Sect. 3.3.

2.2 ATLID Aerosol Layer Descriptor (A-ALD)

The A-ALD product contains geometrical and optical information on aerosol layers. It provides the number of significant aerosol layers present in a profile; their individual upper and lower geometrical boundaries; the layer-mean values of the extinction and backscatter coefficients, lidar ratio, and particle linear depolarization ratio; and the AOT of each layer, as well as the sum of the AOT of all layers and the stratospheric and columnar AOT. All optical parameters hold for the ATLID wavelength of 355 nm. As a prerequisite for the synergy with M-AOT, A-ALD is defined for cloud-free conditions only; i.e., it is not generated when a cloud has been detected with the A-CTH algorithm. Nevertheless, searching for aerosol layers above clouds or below thin cirrus is in principle possible, and respective algorithm updates are foreseen for the future to serve additional user needs. The product is provided with a horizontal resolution of 11 JSG pixels based on a gliding horizontal average along the satellite track. The 5 pixels next to clouds detected with the A-CTH algorithm are excluded to avoid cloud contamination of the aerosol product. The A-ALD product intrinsically contains the height of the planetary boundary layer (PBL), which is the top of the aerosol layer that is in contact with the ground, if such a layer is detected. The Earth surface is the lower boundary of this aerosol layer by definition.

All optical data are supplemented with information on their statistical errors. As in the A-CTH product, a level of confidence for the layer detection and a level of consistency are provided. The latter one is derived by comparing the detected aerosol layers with the aerosol features from the A-TC product. For further use in the AM-ACD algorithm, vertically integrated columnar aerosol classification probabilities are stored in the product as well. They are calculated by weighting the aerosol classification probabilities from A-TC with the extinction coefficient from A-EBD. The details are explained in the mathematical description of the algorithm in Sect. 3.4.

3 ATLID Layer Products processor

3.1 Algorithm overview

The ATLID layer products A-CTH and A-ALD are generated sequentially by the ATLID Layer Products processor A-LAY. Figure 1 shows the overall flowchart of the processor. The ATLID Mie co-polar signal (taken from A-NOM) is used to identify cloud and aerosol layer boundaries. With the help of information on the JSG provided in the X-JSG auxiliary product (Eisinger et al., 2023), the lidar profiles are

resampled on the JSG and complemented with information on the height of the Earth surface taken from the A-TC product. Then, the algorithm searches for clouds, determines the CTH, assigns a cloud class, performs the consistency check against A-TC, and stores the results in the product file (left branch in Fig. 1). Aerosol layer information is calculated in the second step (right branch in Fig. 1), when no clouds were found over the number of JSG pixels selected for horizontal averaging (11 pixels by default). Next to input from A-EBD and A-TC, the tropopause height is needed. It is extracted from the auxiliary file with meteorological data (X-MET; Eisinger et al., 2023). The algorithm determines the aerosol layer boundaries, calculates the optical data and their errors, performs the consistency check against A-TC, computes the aerosol type probabilities, and then finishes with producing the output file. The sub-flows for A-CTH and A-ALD are further detailed in Sect. 3.3 and 3.4, respectively.

3.2 Layer detection algorithm

3.2.1 Selection of the layer detection method

Cloud and aerosol layer detection from elastic-backscatter lidar signals has a long tradition, and numerous methods have been proposed in the literature. Classical layer detection algorithms are based on the setting of thresholds, the search for vertical signal gradients, the detection of temporal/horizontal variances, and the application of WCT or image-processing techniques. Overviews and comparisons of the different methods, mainly with a focus on the determination of PBL heights from ground-based observations, have been presented, e.g., by Menut et al. (1999), Lammert and Bösenberg (2006), Baars et al. (2008), Emeis et al. (2008), Haeffelin et al. (2012), Toledo et al. (2017), and Dang et al. (2019). Various studies have shown that for reliable operational algorithms, it is advisable to combine different methods and allow for adjustable parameter settings (e.g., Morille et al., 2007; Lewis et al., 2013; de Bruine et al., 2017; Bravo-Aranda et al., 2017; Kotthaus et al., 2020).

Compared to ground-based measurements, for which most of the algorithms have been developed, spaceborne observations suffer from low SNR and coarse resolution. Therefore, traditional gradient and variance methods, which are sensitive to noise and require high spatial resolution, are not suited for space lidar applications. Threshold and WCT methods are much more robust and can be easily adjusted to actual observation conditions. Threshold methods have proven to be very useful for cloud detection and are widely used, e.g., for cloud-base determination with laser ceilometers from the ground. Moreover the CALIPSO retrievals apply sophisticated threshold algorithms to detect cloud and aerosol layers (Vaughan et al., 2009; Winker et al., 2009). In these algorithms, threshold values vary as a function of target (cloud or aerosol), height, and horizontal resolution. In general, threshold values have to be carefully chosen depending on the

achieved SNR to avoid misinterpretation of noise peaks (e.g., Chazette et al., 2001; Morille et al., 2007; Berthier et al., 2008).

The WCT technique allows for the analysis of signatures in signal profiles in a more sophisticated way (e.g., Cohn and Angevine, 2000; Davis et al., 2000; Brooks, 2003; Baars et al., 2008). Signal gradients are identified by measuring the similarity of the signal and a prescribed function, usually the Haar wavelet function (Haar, 1910). The parameters of the wavelet can be individually selected and adjusted for specific targets or situations. The technique is widely applied to determine the top of the PBL from automated ground-based lidar and ceilometer observations (e.g., Brooks, 2003; de Haij et al., 2006; Morille et al., 2007; Baars et al., 2008; Zhang et al., 2019). Wavelet analysis has also been used to detect the boundaries and internal structure of cirrus clouds (e.g., van den Heuvel et al., 2000; Wang and Sassen, 2006; Sassen et al., 2007; Wang and Sassen, 2008; Nakoudi et al., 2021) and polar stratospheric clouds (David et al., 2005). The WCT technique is often combined with certain threshold conditions. For instance, Morille et al. (2007) presented an automated algorithm to retrieve the vertical structure of the atmosphere, including clouds, aerosols, and molecular layers, by combining the WCT technique with threshold settings and a noise analysis of the signals.

Based on the literature survey and our experience with the automated processing of ground-based lidar network data (Baars et al., 2008; Pappalardo et al., 2014; Engelmann et al., 2016; Baars et al., 2016), a combined WCT and threshold technique has been chosen for the ATLID Layer Products processor. As shown below, the implementation is relatively simple and robust. A proper setting of WCT parameters and thresholds under consideration of the SNR of the ATLID Mie co-polar signal allows for both cloud and aerosol layer detection with the same algorithm. The mathematical description of the WCT procedure is given in Sect. 3.2.2. The definition of thresholds is explained in Sect. 3.2.3. The specific algorithms and settings for CTH and aerosol layer detections are discussed in Sect. 3.3 and 3.4, respectively.

3.2.2 WCT algorithm

The WCT is defined as

$$W_f(a, b) = \frac{1}{a} \int_{z_b}^{z_t} f(z) h\left(\frac{z-b}{a}\right) dz, \quad (1)$$

with the Haar function (Haar, 1910)

$$h\left(\frac{z-b}{a}\right) = \begin{cases} +1, & b - \frac{a}{2} \leq z \leq b, \\ -1, & b \leq z \leq b + \frac{a}{2}, \\ 0, & \text{elsewhere.} \end{cases} \quad (2)$$

In Eq. (1), $f(z)$ is the signal to be analyzed (in our case the Mie co-polar signal); z is the measurement height; and z_b and

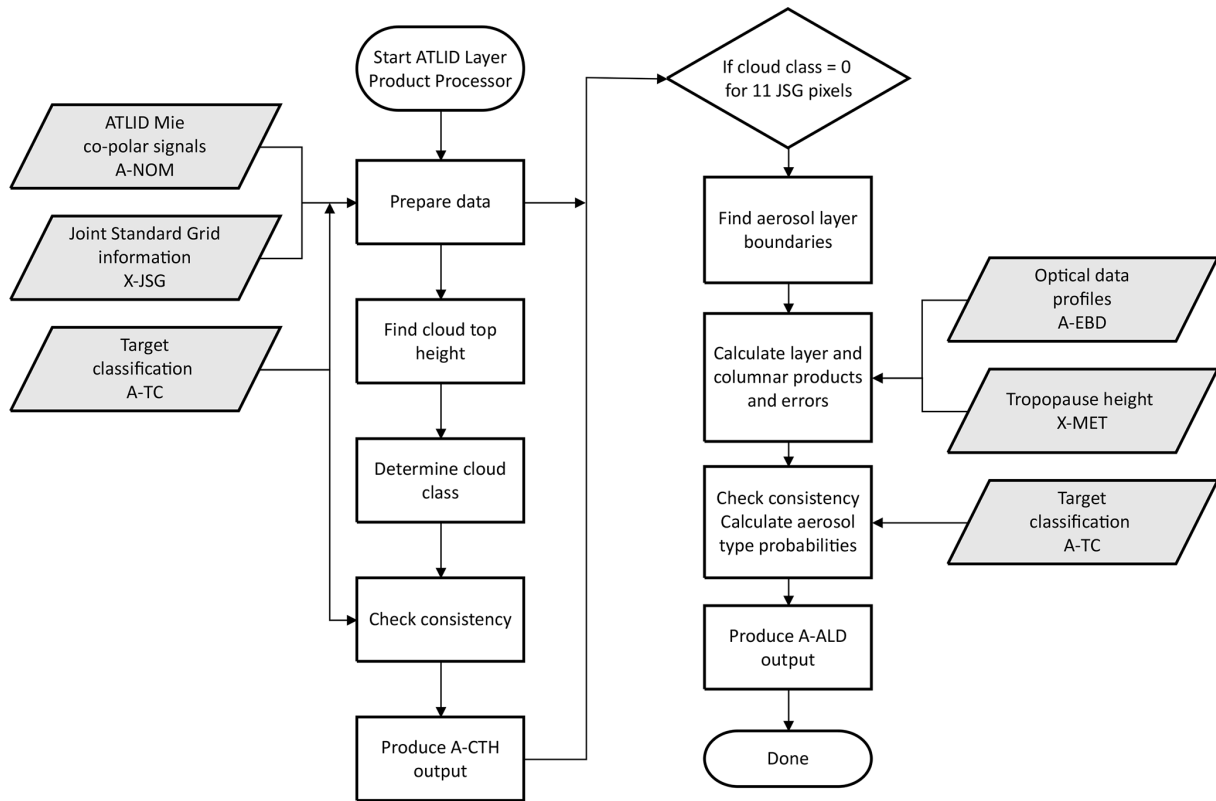


Figure 1. Flowchart of the ATLID Layer Products processor A-LAY.

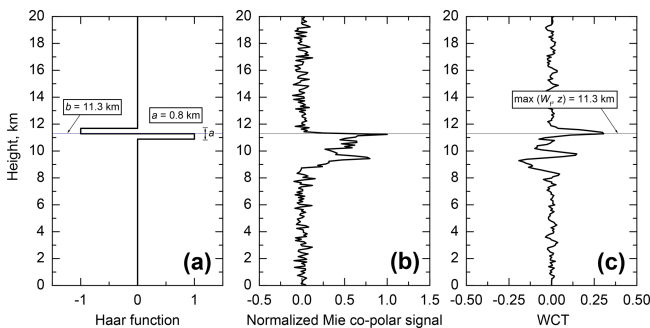


Figure 2. Principle of the WCT technique. (a) Haar function with $a = 0.8$ km and $b = 11.3$ km, (b) normalized Mie co-polar signal (simulated), and (c) the WCT of the Haar function and the normalized Mie co-polar signal.

z_t are the bottom and top heights of the investigated profile, respectively. The Haar function is illustrated in Fig. 2a. It has two parameters. The dilation a describes the extent of the Haar step function, or wavelet, which is 0.8 km in this case. The translation b determines the actual location of the step, i.e., 11.3 km for the given example.

Figure 2b shows a simulated ATLLID Mie co-polar signal, normalized to its maximum value, with a cirrus cloud feature between 8.8 and 11.3 km height (extinction profile taken

from an observation with a ground-based lidar). The WCT is a measure of the similarity of the normalized lidar signal and the Haar function. For the calculation of the entire WCT profile shown in Fig. 2c, the wavelet is slid along the signal profile by running the value of b along z from the bottom to the top. When the wavelet hits strong signatures (gradients) in the profile, $W_f(a, b)$ shows local extreme values. In the example of Fig. 2, the absolute maximum of the WCT is found at the top of the cirrus cloud feature at 11.3 km.

The dilation a of the Haar function is a configurable parameter. It determines how many data points are involved in the analysis; i.e., it has the role of a smoothing parameter. The optimal a depends on the SNR of the lidar signal and thus varies depending on the target (clouds, aerosol layers) and measurement conditions (laser energy, atmospheric attenuation, background lighting, etc.).

For the A-LAY processor, a discrete formulation of the WCT algorithm is used. As mentioned above, the A-CTH and A-ALD products are provided on the JSG. Therefore, in the first step, the L1b Mie co-polar signals are resampled and averaged to the required horizontal resolution. The SNR of the averaged Mie co-polar signal $\bar{P}_{\text{Mie}}(z)$ with a horizontal resolution of either 1 or 11 JSG pixels and a vertical resolution of Δz is calculated accordingly. The discrete WCT can

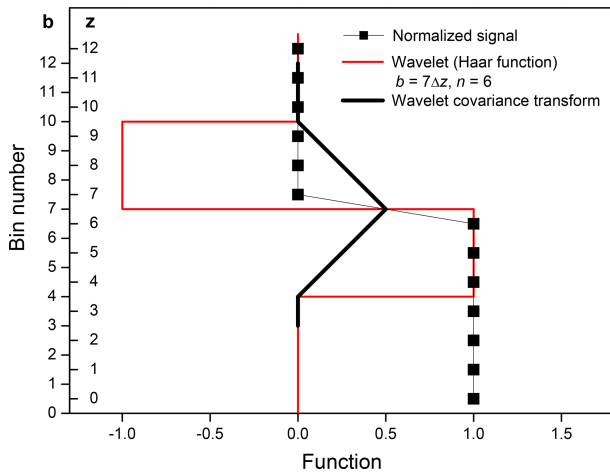


Figure 3. Principle of the WCT for discrete data points and idealized conditions. The symbols represent an idealized, normalized signal with values of 1 for height bins from 0 to 6 and values of 0 above. The wavelet (red line) with a dilation of $6\Delta z$ is translated to bin 7. At this position, the WCT (thick black line) takes the maximum possible value of 0.5.

then be written as

$$W_f(n, b) = \frac{1}{n\Delta z} \left(\sum_{b-n\Delta z/2}^b \hat{P}_{\text{Mie}}(z)\Delta z - \sum_b^{b+n\Delta z/2} \hat{P}_{\text{Mie}}(z)\Delta z \right) \\ = \frac{1}{n} \left(\sum_{b-n\Delta z/2}^b \hat{P}_{\text{Mie}}(z) - \sum_b^{b+n\Delta z/2} \hat{P}_{\text{Mie}}(z) \right). \quad (3)$$

Here, we have substituted the dilation a in Eqs. (1) and (2) by

$$a = n\Delta z, \quad \text{with } n = 2, 4, 6, 8, \dots \quad (4)$$

To enable the application of thresholds to W_f , the normalized signal

$$\hat{P}_{\text{Mie}}(z) = \frac{\overline{P}_{\text{Mie}}(z)}{\max[P_{\text{Mie}}(z)]} \quad (5)$$

is used in the calculation of the WCT. Then, the range of W_f is $[-0.5, 0.5]$. The calculation is performed for heights z between the Earth surface and the uppermost JSG height, and the translation step width follows the vertical resolution of the signal Δz . The discrete values of b have to be set in between two data points of $\hat{P}_{\text{Mie}}(z)$ so that each series in Eq. (3) contains the same number of terms. According to Eq. (3), W_f is the difference of the mean values of the signal $\hat{P}_{\text{Mie}}(z)$ below and above the height of translation b for layers of thickness $n\Delta z/2$. Figure 3 illustrates the discrete WCT for idealized conditions.

3.2.3 Definition of thresholds

Thresholds need to be applied to decide whether a specific extreme value in the WCT profile can be assigned to a cloud

or aerosol layer boundary (see, e.g., Fig. 2c). Two types of thresholds, $W_{C/A,i}$ and $\text{SNR}_{C/A,i}$, with i different values are considered. $W_{C/A,i}$, with $0 < |W_{C/A,i}| < 0.5$, is the value that must be exceeded by the WCT. The threshold is positive for layer top heights and negative for base heights. $\text{SNR}_{C/A,i}$ is the signal-to-noise ratio that is required for the Mie co-polar signal. It indicates whether a feature of a certain strength is present in the signal. If both thresholds are passed at the height where a local extreme value in the WCT function is found, this height is considered to be a potential layer boundary. The thresholds can be set independently for clouds (index C) and aerosol layers (index A). Furthermore, both thresholds can vary with height (index i). The algorithm allows individual settings for four height ranges: the lower troposphere ($i = 0$), the upper troposphere ($i = 1$), the stratosphere up to 20 km ($i = 2$), and the stratosphere above 20 km ($i = 3$). The boundary between the lower and upper troposphere depends on the height of the tropopause and is configurable. It can be set by dividing the height of the tropopause by the troposphere partitioning parameter p_{trop} , which is defined as a floating-point number between 1.0 and 10.0 (default value 3.0). The boundary in the stratosphere is needed because of the change in vertical resolution, and thus SNR, of the Mie co-polar signal at 20 km height.

3.3 ATLID Cloud Top Height (A-CTH)

The algorithm for CTH detection is outlined in Fig. 4. After preparation of the input data (see Sect. 3.1), the scene is processed twice, once with input signals averaged over 1 JSG pixel and once with input signals averaged over 11 JSG pixels. The WCT method with thresholds is applied to both data sets according to the parameter settings. The results are compared to make the decision on actual CTH and corresponding cloud class. Finally, the comparison with the A-TC cloudy pixels is performed to calculate the level of consistency, and the results are stored in the A-CTH output. The steps are described in more detail in the following.

3.3.1 Detection of cloud top height

For the CTH retrieval, the WCT algorithm and the parameter settings described in Sect. 3.2 were further refined to account for realistic cloud scenes and noisy signals. First, an additional search loop was implemented to deal with multi-layer clouds. Here, it has to be considered that strong signals caused by lower clouds can dominate the wavelet analysis so that gradients in weaker signals from thin clouds above are not identified anymore. Therefore, after a CTH (i.e., the uppermost WCT maximum for which the threshold conditions are met) is found from the search over the entire column, the altitude range from the surface up to this CTH is removed, a new normalization of the remaining signal is performed, and the WCT algorithm is applied again. If a new CTH is found,

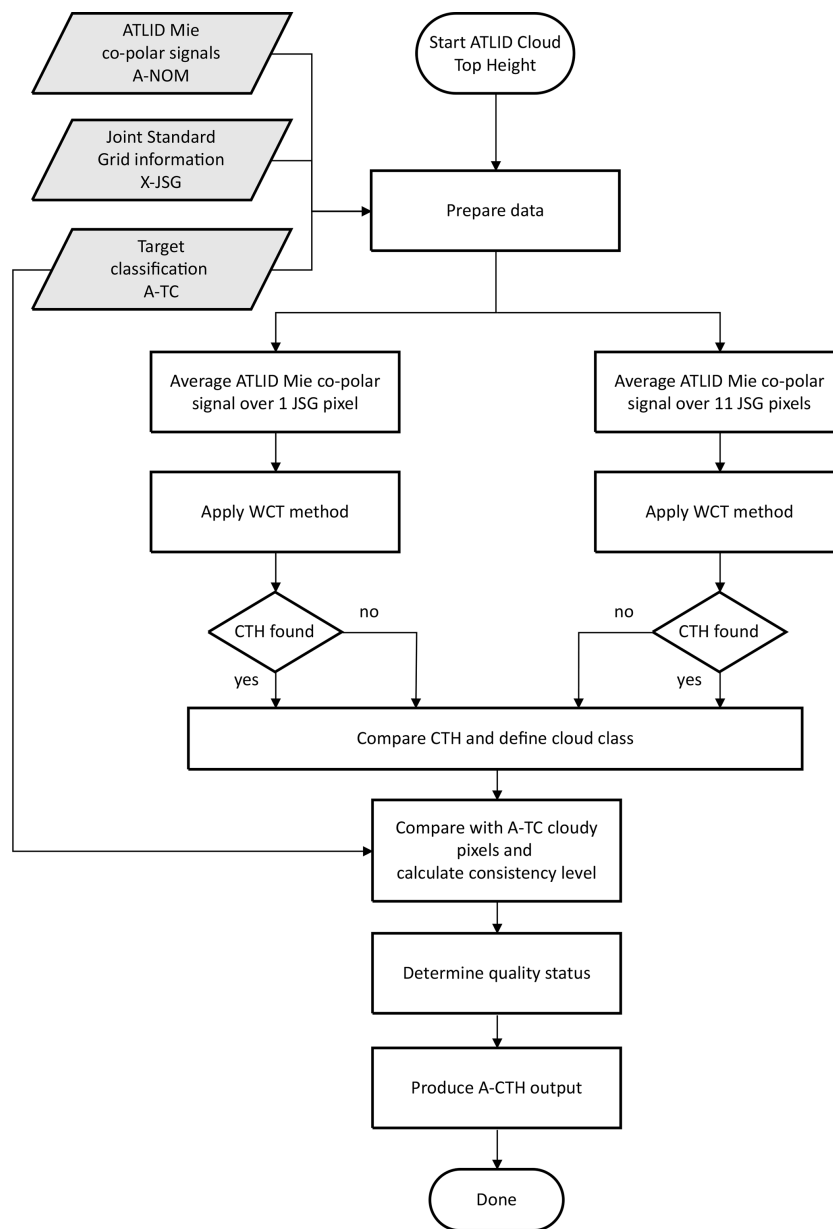


Figure 4. Flowchart for the A-CTH processing.

it replaces the former one. The search is repeated until no new CTH is found anymore.

As a second refinement, an additional configuration parameter m_C was introduced to improve the performance of the algorithm in the case of very noisy signals. It is used to smooth the SNR profile; i.e., the threshold $SNR_{C,i}$ is applied to the mean SNR over m_C data points just below the potential CTH detected with the WCT (local maximum $> W_{C,i}$). As a typical value, $m_C = n/2$ can be chosen. Then, the wavelet and the noise analysis are performed with the same vertical resolution.

3.3.2 Quality indicator for CTH detection

A quality indicator in terms of a level of confidence is provided with the CTH. The level of confidence is determined from the actual value of $W_f(l_{CTH})$ at the cloud top (range bin l_{CTH}) and the threshold value $W_{C,i}$ for this height. It is highest if $W_f(l_{CTH})$ is close to its maximum value of 0.5 and lowest if $W_f(l_{CTH})$ is close to the threshold value. The value is defined as an integer on a linear scale from 1 to 10 as

$$C_{CTH} = \text{int} \left(10 \frac{W_f(l_{CTH}) - W_{C,i}}{0.5 - W_{C,i}} + 0.99 \right). \quad (6)$$

If no CTH is found, C_{CTH} is set to 0.

3.3.3 Simplified classification of uppermost cloud

The algorithm as described above detects optically thick clouds on the basis of Mie co-polar signals averaged over 1 JSG pixel. For the detection of optically thin clouds, a gliding horizontal average of 11 JSG pixels is applied. The algorithm is run successively for both resolutions. Then, the results are compared for each JSG pixel. To indicate the presence of different cloud types for further use in the synergistic CTH algorithm (AM-CTH product; Haarig et al., 2023), a simplified cloud class F_{CTH} is assigned to the pixel as follows.

- $F_{\text{CTH}} = 0$, *no cloud*. No CTH is found, neither with 1 nor with 11 JSG pixel horizontal resolution. The pixel is indicated as cloud free.
- $F_{\text{CTH}} = 1$, *thick cloud*. The CTH is found with 1 JSG pixel horizontal resolution, and no higher boundary is found with 11 JSG pixel resolution. An optically thick cloud is present.
- $F_{\text{CTH}} = 2$, *thin cloud*. The CTH is found with 11 JSG pixel horizontal resolution but not with 1 JSG pixel horizontal resolution. An optically thin cloud is present.
- $F_{\text{CTH}} = 3$, *multiple cloud layers, thin over thick*. The CTH found with 11 JSG pixel horizontal resolution is higher than the CTH found with 1 JSG pixel horizontal resolution. An optically thin cloud above an optically thick cloud is present.
- $F_{\text{CTH}} = 4$, *multiple cloud layers, thick over thick*. At least two different upper cloud boundaries are found with 1 JSG pixel horizontal resolution, and no higher boundary is found with 11 JSG pixel resolution. At least two optically thick cloud layers are present.
- $F_{\text{CTH}} = 5$, *multiple cloud layers, thin over thin*. At least two different upper cloud boundaries are found with 11 JSG pixel horizontal resolution, but no CTH is found with 1 JSG pixel resolution. At least two optically thin cloud layers are present.
- $F_{\text{CTH}} = 6$, *no cloud but probably cloud influenced*. No CTH is found, neither with 1 nor with 11 JSG pixel horizontal resolution, but the profile contributed to the closest detected thin cloud. This class is used to exclude the 5 pixels next to a thin cloud (found with 11 JSG pixel horizontal resolution) from the aerosol layer detection (see Sect. 3.4), as these pixels are probably influenced by the cloud boundaries.

To assign the multi-layer cloud classes $F_{\text{CTH}} = 3, 4, 5$, an optional test is implemented in addition, which checks whether the different CTHs belong to layers that are separated by a clear-air gap. For this purpose, the SNR profile is smoothed over m_C height bins, and the threshold $\text{SNR}_{C,i}$ is applied to

each bin between the different CTHs to decide whether it is cloudy or cloud free. If more than a configurable number of bins are found to be cloud free, two distinct cloud layers are detected. If no gap is found, the layer boundaries are considered to be internal cloud structure and $F_{\text{CTH}} = 3, 4$ is changed to $F_{\text{CTH}} = 1$ (thick cloud) and $F_{\text{CTH}} = 5$ to $F_{\text{CTH}} = 2$ (thin cloud).

3.3.4 Consistency of A-CTH with A-TC

The derived CTH is compared with the uppermost cloudy pixel identified by the A-PRO algorithm (stored in the A-TC product). A 2D level of consistency $X_{\text{CTH}} = (i, j)$, with $i = 0, \dots, 3$ and $j = 0, \dots, 10$, is defined as follows:

- $X_{\text{CTH}} = (0, 0)$, no cloud is present, neither in A-CTH nor in A-TC.
- $X_{\text{CTH}} = (1, 0)$, a cloud is present in A-CTH but not in A-TC.
- $X_{\text{CTH}} = (2, 0)$, a cloud is present in A-TC but not in A-CTH.
- $X_{\text{CTH}} = (3, j)$, a cloud is present in A-CTH and in A-TC; and $j = 1, \dots, 10$ if $\Delta z_{\text{CTH}} < c_C(11-j)$, else $j = 0$, with the configurable confidence criterion c_C and the CTH difference Δz_{CTH} between the A-CTH and A-TC products.

For instance, if c_C is set to 100 m, then $j = 10$ means that the CTH found by both algorithms is within one height bin (difference < 100 m). Each decrease in the consistency level by $\Delta j = 1$ indicates an increase in the CTH difference by about 100 m, and a level of consistency of $X_{\text{CTH}} = (3, 0)$ shows that the CTH difference is ≥ 1000 m.

3.3.5 A-CTH quality status

The A-CTH quality status summarizes the results of the confidence and consistency checks described in Sect. 3.3.2 and 3.3.4, respectively, in a single value from 0 (highest quality) to 4 (bad quality). A quality status of -1 is used when no cloud was detected in the profile. The quality status is defined as follows:

- $Q_{\text{CTH}} = 0$, the data are of good quality.
- $Q_{\text{CTH}} = 1$, the data are valid, but the level of confidence is lower than the configurable threshold $q_{C,\text{loc}}$ (default value 5).
- $Q_{\text{CTH}} = 2$, the data are valid, but the derived CTH is not consistent with the A-TC product. The consistency check led to $j < q_{C,\text{con}}$, where $q_{C,\text{con}}$ is a configurable threshold (default value 3).
- $Q_{\text{CTH}} = 3$, the data are valid, but there is no cloud in the A-TC product.

- $Q_{CTH} = 4$, the (input) data are invalid.
- $Q_{CTH} = -1$, no cloud was detected.

3.4 ATLID Aerosol Layer Descriptor (A-ALD)

Figure 5 shows the flowchart of the A-ALD processing. For the preparation of the input data (see Sect. 3.1), the information on cloud-free pixels from the A-CTH part of the A-LAY processor is needed. The same horizontal averaging as for the detection of thin clouds is used; i.e., the algorithm is applied to groups of 11 JSG pixels, for which $F_{CTH} = 0$ was determined with the A-CTH algorithm (see Sect. 3.3.3). A gliding search with 1 pixel resolution is performed. The WCT method with thresholds is adopted to search for aerosol layer boundaries. Then, the mean optical data for each detected layer and the AOT values are calculated. Similar to the A-CTH product, a comparison with A-TC is performed, and a level of consistency is provided. In addition, the columnar aerosol classification probabilities are computed. All variables are stored with the respective error and quality information in the A-ALD output. The details are described in the following.

3.4.1 Detection of aerosol layers

For the search of aerosol layer boundaries, the WCT algorithm with thresholds is applied to the horizontally averaged, cloud-free Mie co-polar signals under consideration of the specific parameter settings for aerosol. Since both base and top heights are needed, the WCT threshold actually consists of a pair of positive and negative values. Thus, after calculation of the WCT profile, the algorithm searches for all local maxima/minima of the WCT that are larger/smaller than the predefined threshold values $+W_{A,i}/-W_{A,i}$, respectively. The maxima are stored as potential layer top heights and the minima as potential layer base heights. The length of the window that is used for the search (in which not more than one maximum and one minimum can be found) is equal to the dilation of the WCT. The Earth surface is added as a potential layer base if it is not automatically detected by the WCT search. Thus, the existence of the planetary boundary layer (PBL) as the aerosol layer that is in touch with the surface is presumed. However, the PBL is not necessarily detected by the algorithm, which may be the case, e.g., when the aerosol load is too low or the signal is strongly attenuated in lofted layers.

After the potential layer boundaries are identified, the algorithm checks the presence of aerosol in the potential layers. For this purpose, the mean SNR of the Mie co-polar signal between any two successive potential layer boundaries is calculated and compared with the predefined threshold value $SNR_{A,i}$. If the threshold is exceeded, the layer is stored with its respective top and bottom heights.

After the entire scene is processed, an additional filter is applied to remove falsely detected layers. Such false detec-

tion can happen if strong noise peaks occur that are misinterpreted as layers because the thresholds are passed. Noise peaks are singular events, which influence only one or a few adjacent profiles (due to horizontal averaging). Thus, by assuming that real aerosol layers show coherent structures on a larger scale, the falsely detected layers can be removed. The filter checks for each detected layer the five neighboring profiles to each side. If at least four layer bases or layer tops are detected within ± 1 vertical bin distance from the aerosol layer base or layer top, respectively, the aerosol layer is considered to be true and not induced by noise. If the filter criteria are not fulfilled, the aerosol layer is removed.

A further feature of the algorithm is that it can be configured to either detect or not detect the internal structure of aerosol layers (or layers attached to each other). If internal layers are allowed, any layer top, except the uppermost, can be a layer base as well, and any layer base, except the surface, can be a layer top as well. When the detection of internal aerosol layers is suppressed, each layer boundary is either a layer top or a layer base; i.e., the detected layers are always separated by a clear-air gap.

3.4.2 Quality indicators for aerosol layer detection

Quality indicators in terms of a level of confidence are defined for the detection of aerosol layers and layer boundaries. The level of confidence for the identification of layer boundaries is determined from the actual value $W_f(l_{B,T})$ of the WCT at the boundary, i.e., the local minimum or maximum at range bin $l_{B,T}$ of a layer base (index B) or top (index T), respectively. It is highest if $|W_f(l_{B,T})|$ is close to its maximum value of 0.5 and lowest if $|W_f(l_{B,T})|$ is close to the threshold value $|W_{A,i}|$. The value is defined as an integer on a linear scale from 1 to 10 as

$$C_{B,T} = \text{int} \left(10 \frac{|W_f(l_{B,T})| - |W_{A,i}|}{0.5 - |W_{A,i}|} + 0.99 \right). \quad (7)$$

In a similar way, the mean signal-to-noise ratio \overline{SNR} of the Mie co-polar signal within a layer (between range bins l_B and l_T) is used to define the level of confidence for the presence of a distinct aerosol layer:

$$C_L = \text{int} \left(9 \frac{\overline{SNR} - SNR_{A,i}}{10 - SNR_{A,i}} + 0.99 \right) \quad \text{if } \overline{SNR} \leq 10,$$

$$\text{and } C_L = 10 \quad \text{if } \overline{SNR} > 10. \quad (8)$$

$SNR_{A,i}$ is the SNR threshold value used for the layer detection. The highest level of confidence is reached if the mean SNR is above 10.

3.4.3 Columnar and layer optical properties

Optical properties of the detected aerosol layers and the entire aerosol column are derived from the profiles of optical

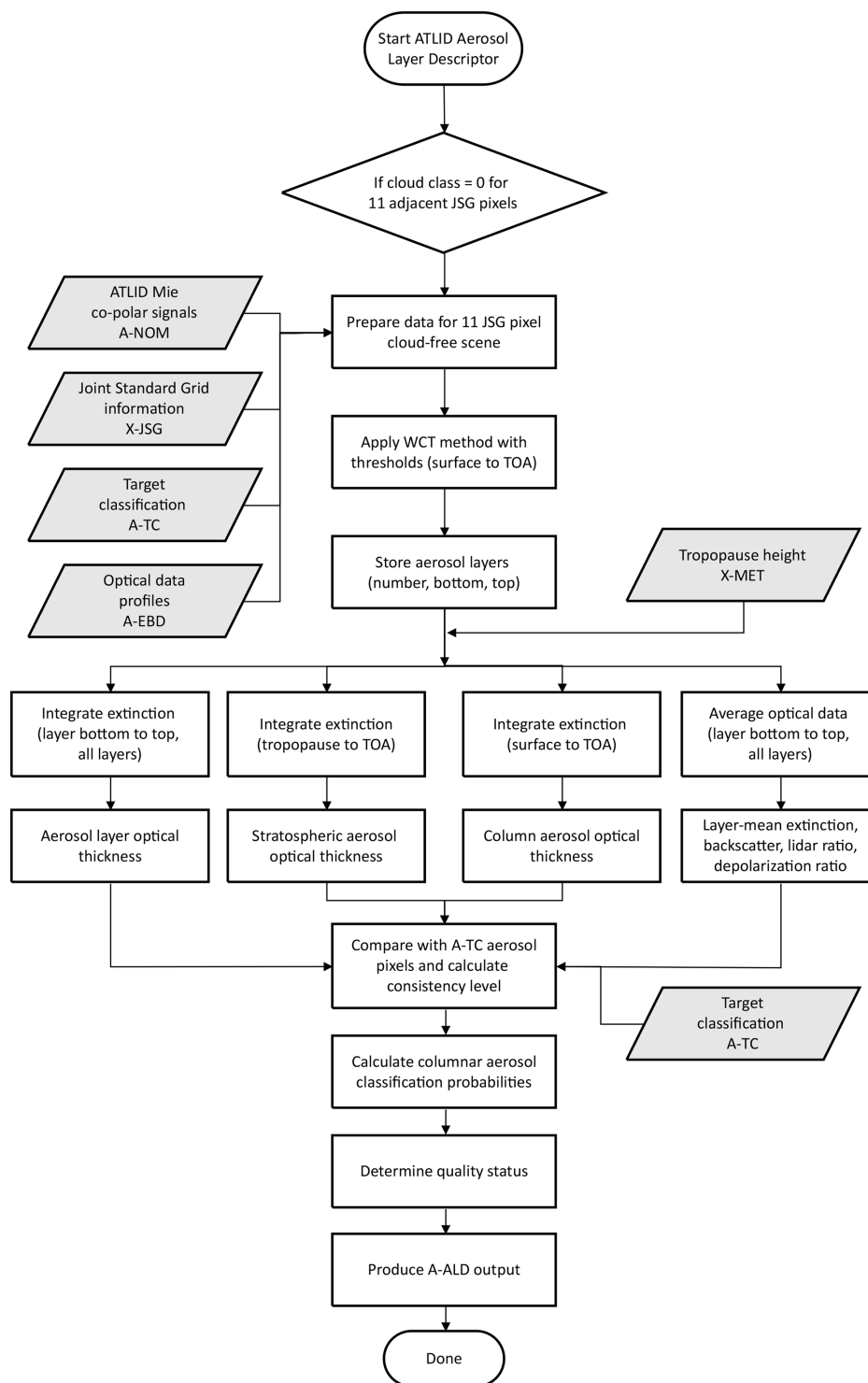


Figure 5. Flowchart for the A-ALD processing.

variables, which are provided in the A-EBD product with three different resolutions (Donovan et al., 2023a). Preferably, the high-resolution data (per JSG pixel) are used and averaged over the 11 JSG pixels, for which the layer boundaries were determined. Alternatively, the user can select the

medium- or low-resolution A-EBD data, which will then be used as is without further averaging. In the latter case, the retrieved optical data may have a better quality (less noise), but they may not be fully consistent with the layer boundaries because of the different resolutions.

The column AOT at the ATLID wavelength of 355 nm is calculated by integrating the profile of the particle extinction coefficient $\alpha_{355}(z)$ from the surface (z_S) to the top of the atmosphere (z_{TOA}):

$$AOT_{355} = \int_{z_S}^{z_{TOA}} \alpha_{355}(z) dz = \sum_{k=l_S+1}^{l_{top}} \alpha_{355}(z_k) \Delta z_k. \quad (9)$$

The integration is replaced by the summation of discrete extinction values in the height bins of width Δz_k . The summation starts with the first height z_{S+1} (at height bin $l_S + 1$) that is not influenced by the surface return. The top of the atmosphere is replaced by the uppermost retrieval height z_{top} (at height bin l_{top}) of $\alpha_{355}(z_k)$. Accordingly, the stratospheric AOT is computed by integrating the extinction profile from the tropopause (obtained from X-MET) to the uppermost retrieval height. Furthermore, the aerosol layer optical thickness is calculated for each detected layer using the layer boundaries determined before (Sect. 3.4.1). In addition to the column aerosol optical thickness, the sum of aerosol layer optical thicknesses is also provided. The difference between the two values indicates how much aerosol is distributed in between the detected distinct aerosol layers.

The A-ALD product also contains, for each detected layer, the layer-mean values of the particle extinction coefficient, backscatter coefficient, lidar ratio, and linear depolarization ratio as well as their errors. Errors for all columnar and layer-mean optical data are calculated from the individual errors provided in the A-EBD product. Error propagation is considered for horizontal averaging, when the high-resolution data are used as input, and for vertical averaging (or integration) for all kinds of input data.

3.4.4 Consistency of A-ALD with A-TC

The derived aerosol layers are compared with the aerosol pixels identified by the A-PRO algorithm (stored in the A-TC product). A 2D level of consistency $X_{AER} = (i, j)$, with $i = 0, \dots, 3$ and $j = 0, \dots, 10$, is defined as follows:

- $X_{ALD} = (0, 0)$, the profile is not cloud free, neither in A-ALD nor in A-TC.
- $X_{ALD} = (1, 0)$, the profile is cloud free in A-ALD but not in A-TC.
- $X_{ALD} = (2, 0)$, the profile is cloud free in A-TC but not in A-ALD.
- $X_{ALD} = (3, j)$, the profile is cloud free in A-ALD and in A-TC; and $j = 1, 2, \dots, 9, 10$ if $r_a > 0.1, 0.2, \dots, 0.9, 0.99$, else $j = 0$, with the agreement ratio r_a , which is the number of height bins of equal detection status (aerosol or clean) in the A-ALD and A-TC products divided by the total number of height bins.

For instance, if $j = 10$, then both algorithms identified > 99 % of the height bins equally as either clean or loaded with aerosol. If $j = 9$, then both algorithms show more than 90 % agreement, and then each decrease in the consistency level by $\Delta j = 1$ indicates a decrease in agreement by 10 %.

3.4.5 Columnar aerosol classification probability

Height-resolved aerosol classification probabilities are calculated with the A-PRO processor and stored in the A-TC product for mixtures of seven aerosol types (dust, marine aerosol, continental pollution, smoke, dusty smoke, dusty aerosol mix, ice; Donovan et al., 2023a). The aerosol classification follows from the Hybrid End-to-End Aerosol Classification (HETEAC) model developed for EarthCARE (Wandinger et al., 2023). The ice is considered to indicate the presence of optically thin ice-containing layers (e.g., diamond dust, subvisible cirrus) that have not been identified as clouds and thus occur in the aerosol products. The seven aerosol type probabilities p_m ($m = 1, \dots, 7$) are weighted with the extinction coefficient $\alpha_{355,med}$ at medium resolution for each height interval and are integrated over the entire column to estimate the absolute contribution $AOT_{355,m}$ of each type m to the total AOT:

$$AOT_{355,m} = \sum_{k=l_S+1}^{l_{top}} p_m(z_k) \alpha_{355,med}(z_k) \Delta z_k. \quad (10)$$

The columnar aerosol classification probability $P_{355,m}$ describes the relative contribution of each of the seven types to the AOT measured with ATLID:

$$P_{355,m} = \frac{AOT_{355,m}}{\sum_{m=1}^7 AOT_{355,m}}. \quad (11)$$

The columnar aerosol classification probability is an important input parameter for the AM-COL algorithm (Haarig et al., 2023), which combines the ATLID aerosol typing with the MSI aerosol classification provided in the M-AOT product (Docter et al., 2023).

3.4.6 A-ALD quality status

The A-ALD quality status summarizes the results of the confidence and consistency checks described in Sect. 3.4.2 and 3.4.4, respectively. It is provided for each JSG pixel (not for each aerosol layer) on a scale from 0 (highest quality) to 4 (bad quality). A quality status of -1 is used when a cloud was detected in the profile. The quality status is defined as follows:

- $Q_{ALD} = 0$, the data are of good quality.
- $Q_{ALD} = 1$, the data are valid, but the number of aerosol layers is higher than the configurable threshold $q_{A,nal}$ (default value 2).

- $Q_{\text{ALD}} = 2$, the data are valid, but the relative uncertainty of the mean backscatter coefficient of at least one aerosol layer is larger than the configurable threshold $q_{\text{A,bsc}}$ (default value 0.1). Furthermore, the consistency level j is smaller than the configurable threshold $q_{\text{A,con}}$ (default value 8).
- $Q_{\text{ALD}} = 3$, warning that data are provided, but the A-TC product indicates a cloud in the profile.
- $Q_{\text{ALD}} = 4$, the (input) data are invalid.
- $Q_{\text{ALD}} = -1$, a cloud was detected in the profile.

4 Algorithm tests with simulated data

Atmospheric test scenes created from numerical model output data have been used for developing, testing, and evaluating the entire chain of EarthCARE processors (van Zadelhoff et al., 2023b). Cloud and precipitation information is based on output of the Global Environmental Multiscale (GEM) model, while aerosol fields were taken from the Copernicus Atmosphere Monitoring Service (CAMS) model (Qu et al., 2022). By applying a sophisticated instrument simulator (Donovan et al., 2023b), test data for three dedicated scenes representing typical EarthCARE processing frames of one-eighth of an orbit were generated. According to geographic locations that are crossed by the simulated satellite tracks, the test scenes are called Halifax, Baja, and Hawaii. A detailed description of the scene selection, generation, and contents is provided by Qu et al. (2022). In the following, selected results obtained with the A-LAY processor for the test scenes are presented to demonstrate the performance of the A-CTH (Sect. 4.1) and A-ALD (Sect. 4.2) algorithms.

4.1 A-CTH algorithm tests

Figure 6 shows the 2D cross section of the simulated ATLID Mie co-polar signal for the Halifax scene. The cloud top heights determined with the A-CTH algorithm are overlaid as black squares. The color code for the logarithmic representation of the L1b data is adopted from the well-known CALIPSO lidar browse images (see, e.g., respective products on the CALIPSO website, <https://www-calipso.larc.nasa.gov/products/>, last access: 31 August 2023). Strongly scattering targets such as dense clouds appear in white and gray. The red and yellow colors indicate weaker backscatter signals caused by aerosols and optically thin clouds or by attenuation of the signal in optically thick clouds. The bluish background represents either clear air or regions where the signal is completely attenuated by thick clouds above. The Halifax scene stretches from Greenland over the eastern end of Canada towards the Caribbean. The northern part of the scene (68 to 48° N) is dominated by snowing ice and mixed-phase clouds. A convective system with multiple high-reaching cloud layers related to a precipitating cold

Table 1. Configuration parameters used in the processing of the test scenes with the A-CTH algorithm.

Configuration parameter	Symbol	Value
Dilation of the wavelet	n_C	6
Troposphere partitioning parameter	p_{trop}	3
WCT threshold, lower troposphere	$W_{C,1}$	0.05
WCT threshold, upper troposphere	$W_{C,2}$	0.05
WCT threshold, stratosphere below 20 km	$W_{C,3}$	0.05
WCT threshold, stratosphere above 20 km	$W_{C,4}$	0.05
Number of bins for SNR smoothing	m_C	3
SNR threshold, lower troposphere	$\text{SNR}_{C,1}$	15
SNR threshold, upper troposphere	$\text{SNR}_{C,2}$	5
SNR threshold, stratosphere below 20 km	$\text{SNR}_{C,3}$	5
SNR threshold, stratosphere above 20 km	$\text{SNR}_{C,4}$	5
Minimum bin number for clear-air gap	Δz_{ml}	5
Consistency criterion (m)	c_C	100
Quality threshold for level of confidence	$q_{C,\text{loc}}$	3
Quality threshold for consistency with A-TC	$q_{C,\text{con}}$	5

front starts over eastern Canada (at about 46° N) and reaches southward to Bermuda (at about 33° N). In the southern part of the scene, scattered low-level cumulus clouds are embedded in a weak aerosol layer.

In Fig. 7, the A-CTH product is presented in more detail for the middle part of the Halifax scene (convective system). Table 1 lists the configuration parameters applied in the processing. The parameters were chosen to optimize the number of correctly detected cloud boundaries. As can be seen from Fig. 7b, all defined cloud classes (F_{CTH} ; see Sect. 3.3.3) appear in this part of the scene. Each vertical bar on the colored horizontal lines, which stand for the cloud classes (see description to the right), represents a single JSG pixel. The high-reaching precipitating ice clouds of the convective system (around 36–38.7, 44–45, and 46–46.5° N) are identified as thick clouds, i.e., on the native JSG grid without averaging. In such optically dense ice clouds, the signals are often completely attenuated after 2–3 km penetration depth, as in the case between 36 and 38.5° N where no structures below 10 km can be seen. The top of the cirrus at about 40–40.5° N is also detected at the highest resolution and is thus indicated as belonging to a thick cloud. However, this cirrus layer is semi-transparent for the laser beam, and the optically thick water cloud with a top at 4 km height, which finally attenuates the signal completely, is identified as well. Consequently, the classification is thick over thick for this part of the scene. Most of the other ice clouds require averaging over 11 JSG pixels to determine the CTH and are thus either classified as single-layer thin (see, e.g., 33–34° N) or multi-layer thin over thick clouds (dominating in the range from 40.5–44° N).

Panels c, d, and e of Fig. 7 provide some information on the quality of the CTH determination. The level of confidence (C_{CTH} ; see Sect. 3.3.2) varies between 1 and 9 and often shows low values of 1 or 2, which means that the obtained

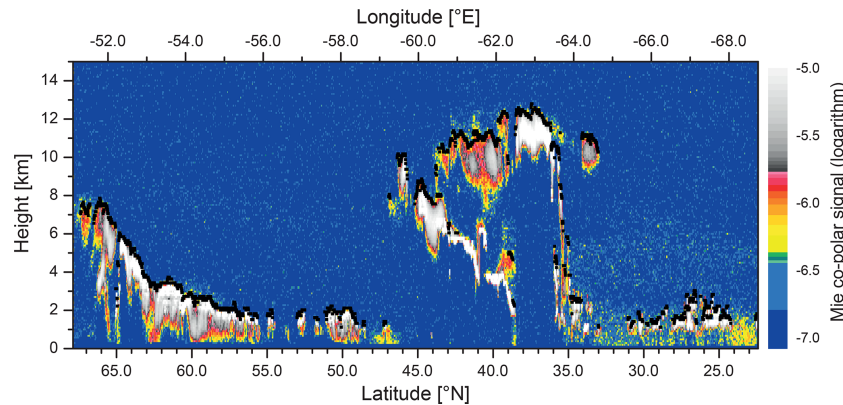


Figure 6. Cross section of the simulated ATLID Mie co-polar signal overlaid with cloud top heights from the A-CTH product (black squares) for the Halifax scene. The surface return has been removed, and horizontal smoothing over 11 JSG pixels has been applied for plotting the L1b signals.

WCT maximum just passed the chosen threshold value, and thus the signal gradient at the cloud top is relatively weak (see Sect. 3.3.2). As can be seen from the 2D cross section, regions of increased scattering are often present above the derived CTH for the high clouds. These features make it difficult to determine a clear cloud boundary. In these regions, the consistency with the A-TC product (X_{CTH} ; see Sect. 3.3.4) is also the lowest. The A-TC product is based on a layer approach with certain horizontal averaging (Irbah et al., 2023; Donovan et al., 2023a). It typically has a lower resolution than A-CTH; i.e., the target boundaries, and thus also the cloud top heights, appear smoother than in the A-CTH product. Sometimes, cloud gaps found in A-CTH are not present in A-TC (see the level of consistency with $X_{CTH} = (2, 0)$, dark red bars and blue dots, respectively). Along the cross section shown in Fig. 7, there are 1625 pixels indicated as cloudy by at least one of the algorithms. In 87.3 % of the cases, clouds are found by both algorithms, in 12.3 % only by A-TC, and in 0.4 % only by A-CTH. When both algorithms detect clouds, the upper boundary agrees within 300 m in 45 % of the cases. The difference is larger than 1 km for about 40 % of the cloudy pixels. The quality status (Q_{CTH} ; see Sect. 3.3.5) shown in Fig. 7e reflects these findings according to the threshold settings (see Table 1).

Figure 8 shows a direct comparison of the derived CTH values with the model truth. Next to the Halifax scene (Fig. 8a, b), results are also presented for the Baja and Hawaii scenes. In all cases, the same parameter settings were applied (see Table 1). The Baja scene (Fig. 8c, d) starts over northern Canada, crosses the Rocky Mountains, and ends over the Baja California peninsula. The scene comprises very clear conditions in the northern part, scattered clouds over the Canadian Prairies, overcast over the Rocky Mountains, cloud-free conditions with high aerosol load over Utah and Arizona, and cirrus clouds in the southern part. The Hawaii scene (Fig. 8e, f) extends over the tropical Pacific across the Hawaiian Islands. The scene is dominated by a tropical con-

vective system and high ice clouds reaching up to almost 18 km height.

For the comparison, the simulated extinction fields for cloud hydrometeors (see Qu et al., 2022) were used, and a threshold value was applied to determine the “true” CTH. The extinction threshold was varied between 1 and 50 Mm^{-1} . The best agreement in terms of minimum difference between A-CTH and model truth was found for a threshold value of 20 Mm^{-1} , for which the results are presented in Fig. 8. In this case, about two-thirds of the CTH values agree within $\pm 300 \text{ m}$ and 87 % within $\pm 600 \text{ m}$ for all scenes (see the numbers provided in the scatterplots). As expected, the largest differences are found for optically thin cirrus clouds in the 8–14 km height range of the Halifax and Hawaii scenes. Moreover, it turned out that with the chosen threshold settings (see Table 1), the algorithm often fails to detect thin or scattered clouds in the lower troposphere. Pixels with undetected clouds are indicated with small vertical bars on top of the x axis in the left panels of Fig. 8. On average, they make up about 11 % of all cloudy model pixels. In principle, this number can be reduced, e.g., by lowering the SNR threshold value for the lower troposphere ($\text{SNR}_{C,1}$). However, this could also lead to the misclassification of dense aerosol layers as clouds. Because such layers are missing in the test scenes, an in-depth evaluation of the parameter settings with respect to aerosol–cloud discrimination was not possible. For about 3 % of all test-scene pixels, clouds are reported in the A-CTH product, although there is no cloud in the model truth. These cases are mainly related to the 11 pixel averaging across cloud edges, which can artificially stretch the appearance of clouds horizontally.

For the chosen parameter settings and quality criteria (see Table 1), and on average for all three scenes, 27 % of the CTH results are indicated as having a good quality ($Q_{CTH} = 0$), and 49 % are also valid but with a somewhat lower level of confidence ($Q_{CTH} = 1$). In 21 % of the cases, the derived CTH is not consistent with the A-TC product (difference

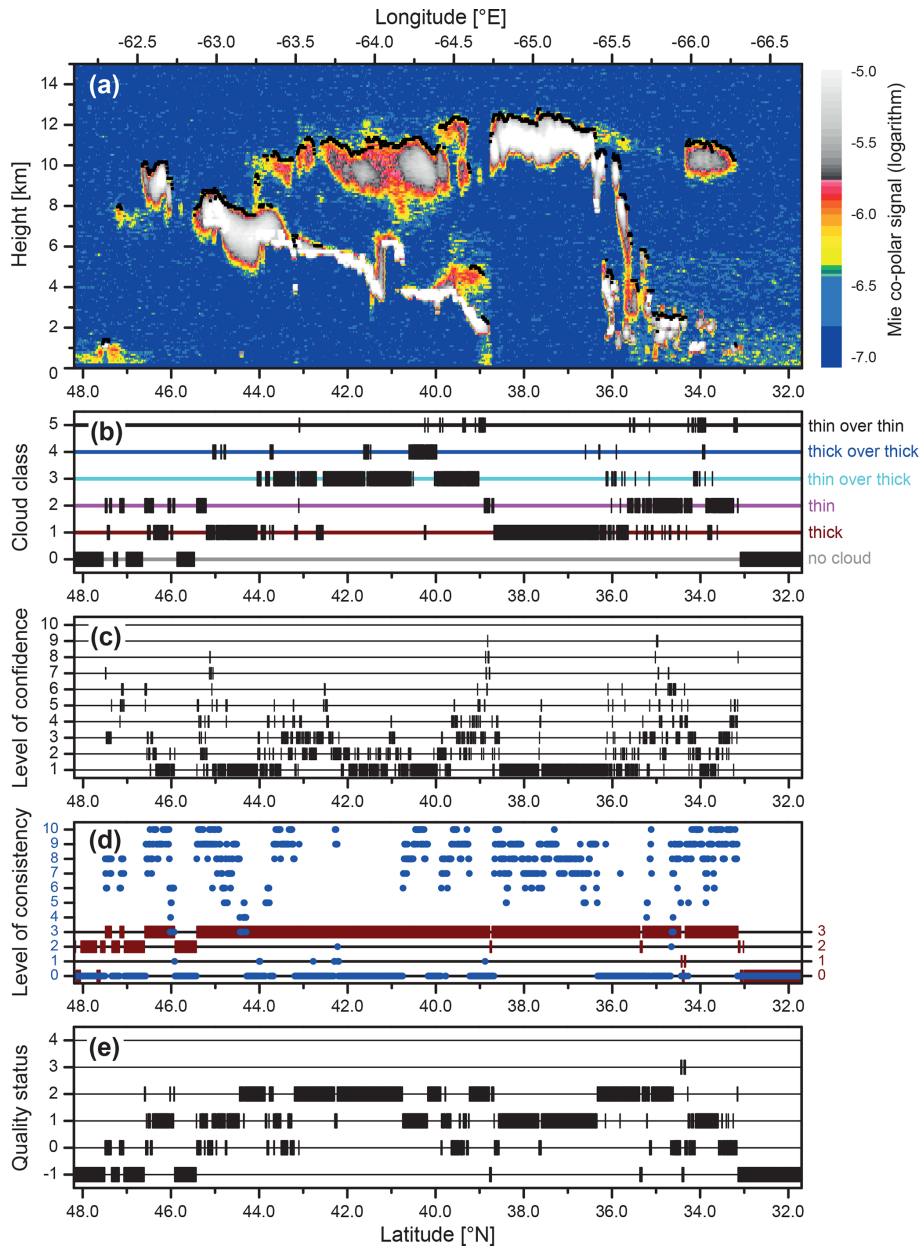


Figure 7. Illustration of the A-CTH product for the middle part of the Halifax scene. The same settings as for Fig. 6 are used for the 2D cross section in panel (a). Panels (b)–(e) show the cloud classification (F_{CTH}), the CTH level of confidence (C_{CTH}), the level of consistency with the A-TC product ($X_{\text{CTH}} = (i, j)$, with i in dark red and j in blue), and the CTH quality status (Q_{CTH}), respectively. The processing was performed with the parameter settings given in Table 1.

> 300 m, $Q_{\text{CTH}} = 2$), and for 3 % there is no cloud detected in A-TC ($Q_{\text{CTH}} = 3$). In general, when judging the quality of CTH detection, one has to keep in mind that the cloud structures in the test scenes originate from a numerical forecast model, and thus the shape of the cloud boundaries may not always be fully realistic. Furthermore, a much wider range of cloud–aerosol scenarios is needed for optimizing the threshold settings to properly discriminate clouds and aerosol in different heights and geographical locations. Therefore, it

will be important to carefully test and validate the CTH algorithm with real-world data after the EarthCARE launch and to adapt the configuration parameters accordingly.

4.2 A-ALD algorithm tests

Because the three standard test scenes are strongly dominated by clouds, the modified Halifax aerosol scene has been generated for testing the aerosol-related algorithms. The Halifax aerosol scene is a shorter test scene representing the southern

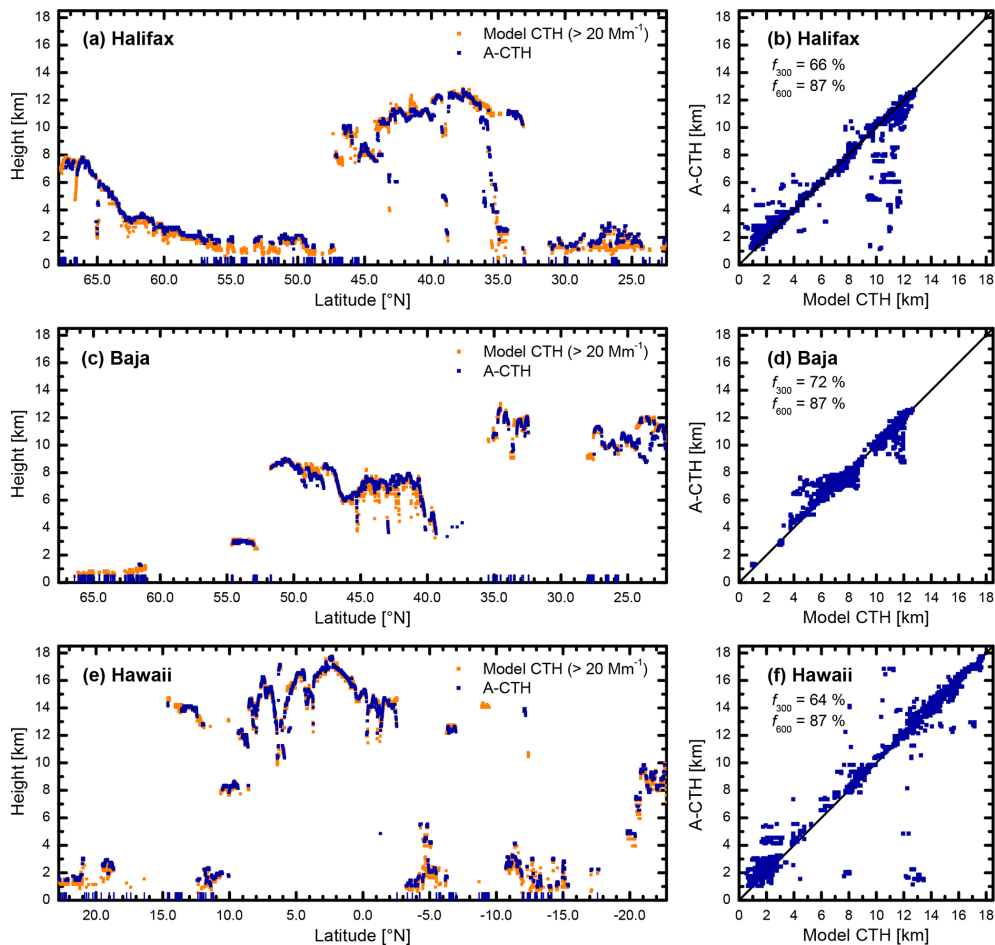


Figure 8. Comparison of the CTH derived with the A-CTH algorithm with the GEM model truth for (a, b) the Halifax scene, (c, d) the Baja scene, and (e, f) the Hawaii scene. Panels (a), (c), and (e) show the direct comparison along the simulated satellite track and panels (b), (d), and (f) the respective scatterplots. The blue bars on top of the x axis in panels (a), (c), and (e) indicate the pixels where a cloud was present in the model truth but was not detected by the A-CTH algorithm. The numbers in the scatterplots show the percentage of agreement of data points within height intervals of ± 300 and ± 600 m, respectively. The extinction threshold for defining a cloud in the model output is set to 20 Mm^{-1} . The processing of all three scenes was performed with the same parameter settings given in Table 1.

2000 km of the Halifax scene. The extinction of the marine aerosol type has been increased by a factor of 2.5, whereas all other aerosol types and the liquid clouds have been down-scaled by a factor of 10^{-6} . The resulting 2D cross section of the simulated ATLID Mie co-polar signal is shown in the upper panels of Figs. 9 and 10. Ice clouds are still present north of 33°N , but the major part of the scene is dominated by a distinct marine boundary layer. The base and top heights of this layer as derived with the A-ALD algorithm are overlaid in gray and black, respectively, on the color plots. In the panels below the 2D cross sections, different variables contained in the A-ALD product are plotted. The configuration parameters applied in the processing are listed in Table 2. They were chosen to optimize the aerosol layer detection.

Figure 9b shows the comparison of the derived columnar AOT (blue) with the model truth (orange). In general, the agreement is very good, although an increase in the noise

levels of the retrieved AOT values in the southern part of the scene is evident. The noise is linked to the decreasing SNR in the Rayleigh signal, which is due in part to the increasing solar background in this section of the scene. In addition, the increasing particle backscattering in the marine boundary layer decreases the SNR of the Rayleigh signal via the correction of the cross-talk between the Rayleigh and Mie channels.

Panels c, d, and e of Fig. 9 show different quality indicators, namely the level of confidence for the top height of the lowermost aerosol layer (C_T ; see Sect. 3.4.2), the level of consistency with the A-TC product ($X_{\text{ALD}} = (i, j)$, with i in dark red and j in blue; see Sect. 3.4.4), and the A-ALD quality status (Q_{ALD} ; see Sect. 3.4.6). C_T is mainly between 2 and 4, indicating a well-pronounced layer top (WCT maximum well above the threshold value). Moreover, the consistency with A-TC is very good. The highest quality sta-

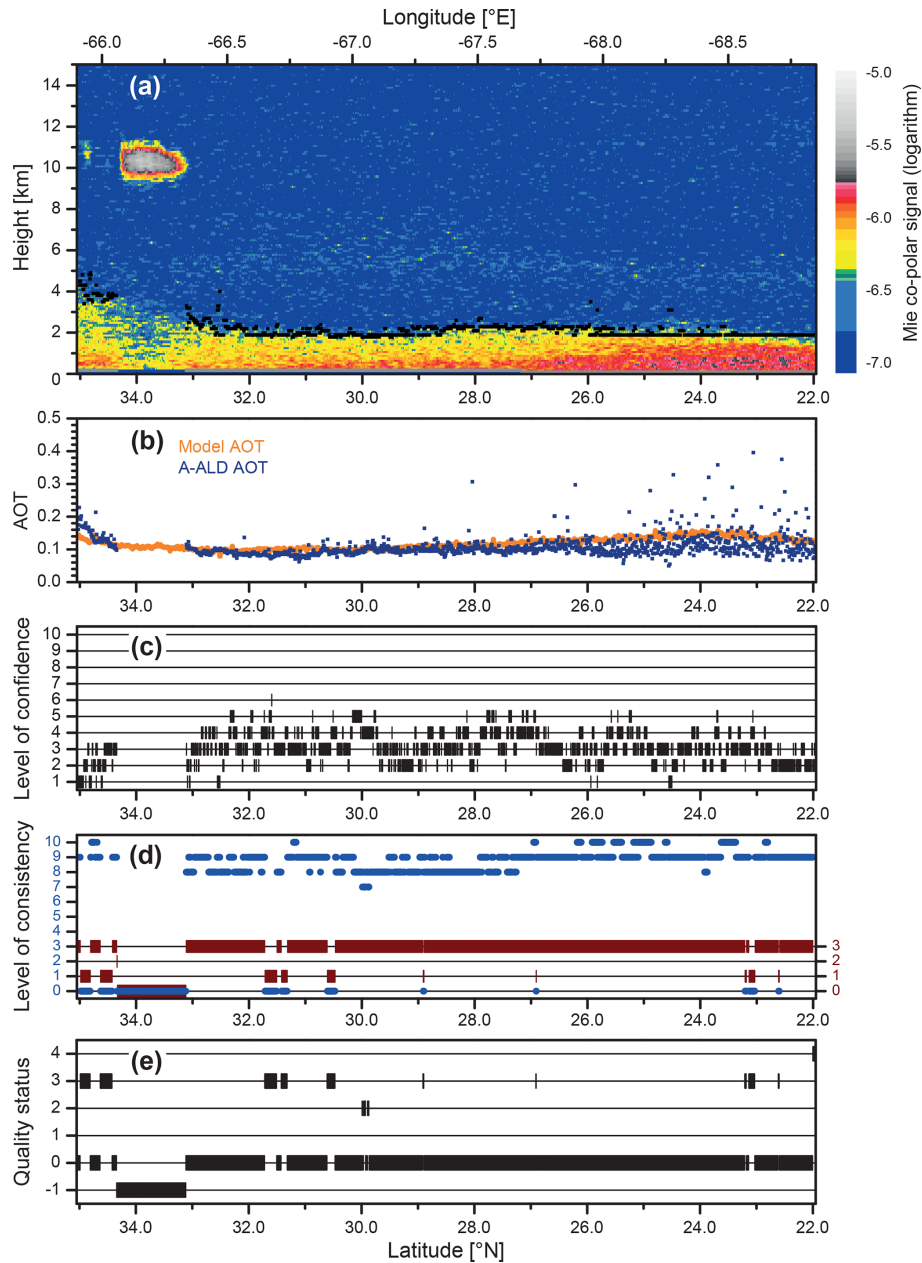


Figure 9. Illustration of the A-ALD product for the Halifax aerosol scene. In panel (a), the cross section of the simulated ATLID Mie co-polar signal is overlaid with bottom (gray) and top heights (black) of the lowermost aerosol layer. The surface return has been removed, and horizontal smoothing over 11 JSG pixels has been applied for plotting the L1b signals. Panel (b) presents the comparison of the derived columnar AOT (blue) with the model truth (orange). Panels (c), (d), and (e) show the level of confidence for the top height of the lowermost aerosol layer (C_T), the level of consistency with the A-TC product ($X_{ALD} = (i, j)$, with i in dark red and j in blue), and the A-ALD quality status (Q_{ALD}), respectively. The processing was performed with the parameter settings given in Table 2.

tus ($Q_{ALD} = 0$) is obtained for 90 % of the cloud-free pixels, while $Q_{ALD} = 1$ or $Q_{ALD} = 2$ is found for less than 1 %. The spurious A-TC cloud detections ($X_{ALD} = (1, 0)$, $Q_{ALD} = 3$, 9 % of the pixels) south of 32°N are linked to the misinterpretation of noise peaks by the A-TC algorithm. Such effects could have been further reduced if more aggressive configuration parameter tuning was carried out. However, it is not

advisable to adapt the configuration parameters to a specific scene. Rather, optimization should take place at a later stage on the basis of a larger collection of real-world data.

In Fig. 10, several optical aerosol properties are presented for the Halifax aerosol scene. Figure 10b and c show different AOT products (see Sect. 3.4.3). For the present case with only one distinct aerosol layer, the AOT of the lower-

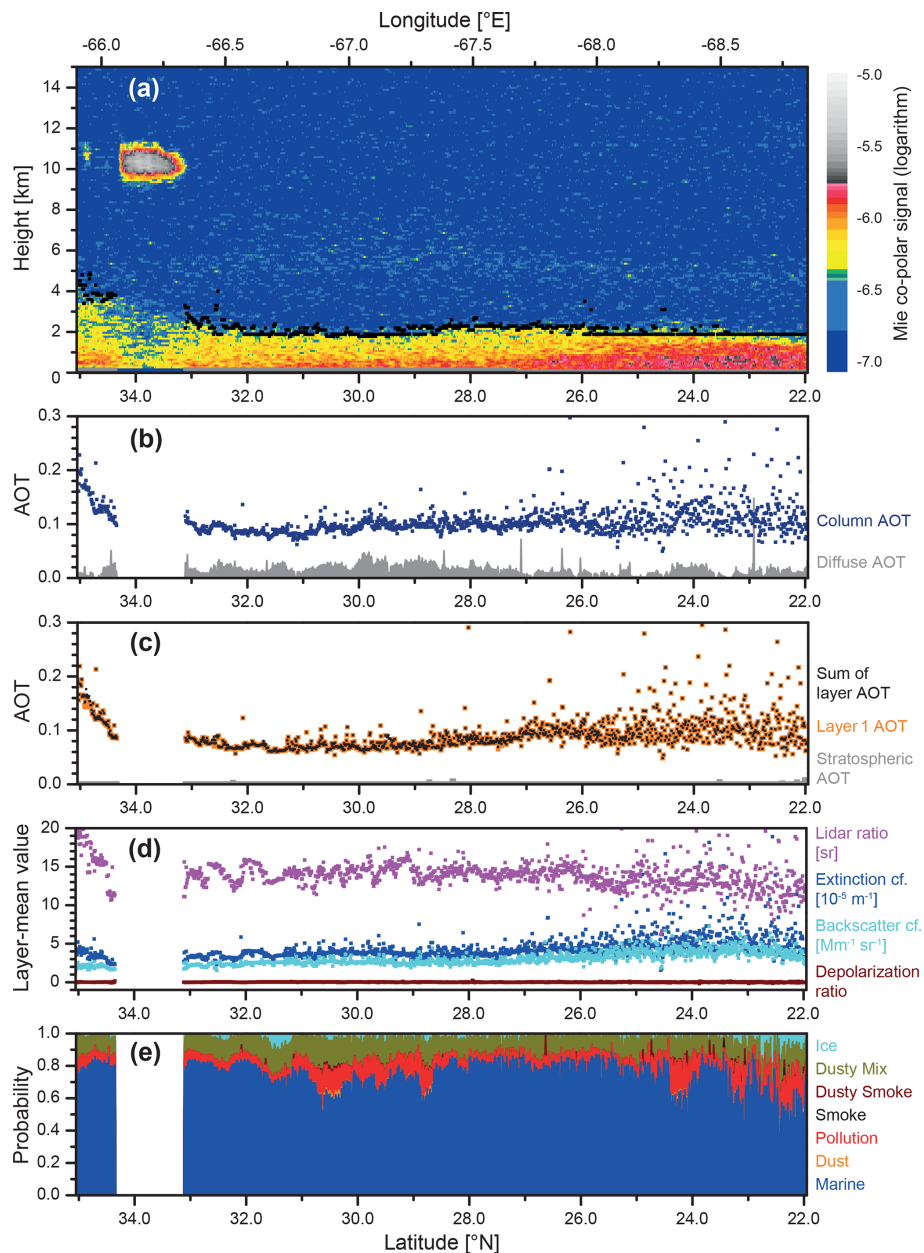


Figure 10. As Fig. 9, but the panels below the 2D cross section show (b) the columnar (blue) and diffuse AOT (gray); (c) the lowermost layer AOT (orange), the sum of layer AOT (black), and the stratospheric AOT (gray); (d) the layer-mean optical properties for the lowermost aerosol layer; and (e) the columnar aerosol classification probabilities.

most layer (layer 1) is equal to the sum of layer AOT for almost all pixels (black dots on orange symbols in Fig. 10c). Accordingly, the stratospheric AOT, indicated in gray in this panel, has values close to zero. The columnar AOT (blue in Fig. 10b) is slightly higher than the sum of layer AOT, and the difference is indicated by the gray bars called “diffuse AOT”. It represents the contribution of aerosol that is not confined in distinct layers. Some of it is visible as a faint structure between 4 and 6 km height in Fig. 10a. The mean optical properties of the lowermost layer are shown in Fig. 10d. This plot

nicely demonstrates the ability of ATLID to provide layer-mean values of the particle extinction and backscatter coefficients, lidar ratio, and linear depolarization ratio, which are the input for aerosol typing based on L2 products (Wandinger et al., 2023). Figure 10e shows the columnar aerosol classification probabilities following from this typing approach (see Sect. 3.4.5). Marine aerosol (blue) is correctly found as the major contributor to the AOT, with a probability of > 60 % for most of the pixels. Contributions of anthropogenic pollution (red) and mixtures with dust (dark yellow) are not

Table 2. Configuration parameters used in the processing of the test scenes with the A-ALD algorithm.

Configuration parameter	Symbol	Value
Dilation of the wavelet	n_A	12
Troposphere partitioning parameter	p_{trop}	3
WCT threshold, lower troposphere	$W_{A,1}$	0.05
WCT threshold, upper troposphere	$W_{A,2}$	0.05
WCT threshold, stratosphere below 20 km	$W_{A,3}$	0.05
WCT threshold, stratosphere above 20 km	$W_{A,4}$	0.05
SNR threshold, lower troposphere	$\text{SNR}_{A,1}$	1.5
SNR threshold, upper troposphere	$\text{SNR}_{A,2}$	1.3
SNR threshold, stratosphere below 20 km	$\text{SNR}_{A,3}$	1.3
SNR threshold, stratosphere above 20 km	$\text{SNR}_{A,4}$	1.3
Switch for internal layer structure	s_{il}	0
Selection parameter for input data resolution	s_{res}	1
Quality threshold for number of aerosol layers	$q_{A,\text{nal}}$	2
Quality threshold for relative backscatter error	$q_{A,\text{bsc}}$	0.1
Quality threshold for consistency with A-TC	$q_{A,\text{con}}$	8

completely ruled out. The respective probabilities are determined by the 2D Gaussian distribution functions that define the aerosol types in the lidar-ratio and depolarization-ratio phase space (see Wandinger et al., 2023, Fig. 9). The width of the distribution functions, and thus the overlap of neighboring types (here marine, pollution, and dusty mix), is configurable in the A-TC algorithm and can thus be adjusted for real-world data if needed. The small contributions of ice and other aerosol types to the columnar classification probabilities are related to noisy data and respective misinterpretations as discussed above.

Finally, in Fig. 11, a comparison of the A-ALD columnar AOT with the model truth is presented for the three standard scenes, similar to CTH in Fig. 8. The comparison is shown for all JSG pixels for which a solution is available in A-ALD (gray symbols) as well as for those pixels for which the quality status Q_{ALD} is zero (blue symbols, highest data quality, 37 % of the cloud-free A-ALD pixels). The scatterplots in the right panels show that the agreement with the model truth increases when the quality status of the data is taken into account. However, deviations in AOT of > 0.05 are still obtained for 10 %–40 % of the data points. As mentioned above, the standard scenes are dominated by clouds, and thus aerosol retrievals are hampered. Adequate horizontal averaging for good extinction retrievals is not always possible, which leads to a higher uncertainty in the aerosol products. Moreover, the columnar AOT from the A-ALD product shows a positive bias on the order of 0.05–0.1 against the model truth in some regions. The bias is mainly caused by contributions of optically very thin clouds that are not detected by the A-CTH algorithm and that are thus interpreted as aerosol in A-ALD. When $Q_{\text{ALD}} = 0$ (blue symbols), the A-TC product does also not indicate any cloud in the profile. Most prominent in Fig. 11 is the range between 28 and 35° N in the Baja scene, where the bias is obviously caused

by a very thin ice cloud at 10–13 km height with an optical depth of about 0.1 (see Qu et al., 2022, their Supplement) and extinction values often below 20 Mm^{-1} (i.e., no cloud indicated in the model truth in Fig. 8). Thin ice clouds not detected by A-CTH are also present near the surface between 61 and 66° N in the Baja scene, but they are screened by the comparison with A-TC ($Q_{\text{ALD}} = 3$, 42 % of the cloud-free A-ALD pixels).

In general, from the A-ALD algorithm tests, it can be concluded that combining information from A-ALD and A-TC, together with proper settings of the configuration parameters in both algorithms, helps to optimize cloud–aerosol discrimination and thus the quality of the ATLID aerosol products. As for A-CTH, careful testing and validation of the A-ALD algorithm with real-world data for a wide range of scenarios after the EarthCARE launch are important.

5 Conclusion and outlook

The A-LAY processor has been developed to generate cloud top height and aerosol layer information from ATLID L1 and L2 profile data. The A-CTH and A-ALD products serve as input for the synergistic AM-COL processor, which combines data from ATLID and MSI to extend information from the ATLID track to the MSI swath (Haarig et al., 2023). Therefore, all data are provided on the EarthCARE joint standard grid with a predefined resolution. A wavelet covariance transform method with flexible thresholds is used to determine cloud and aerosol layer boundaries from ATLID Mie copolar signals with different horizontal resolution. Appropriate threshold settings allow the detection of optically thick clouds at the native JSG resolution (approximately 1 km horizontal, 100 m vertical). For thin clouds and aerosol layers, horizontal averaging over 11 JSG pixels is applied. Next to geometric layer boundaries, the products contain further information on cloud and aerosol layers. A simplified classification of the uppermost cloud, including multi-layer information, is provided as input for the synergistic AM-CTH algorithm. For aerosol layers, layer-mean optical data are calculated from the profiles of extinction, backscatter, lidar ratio, and depolarization ratio at 355 nm taken from the A-EBD product. Furthermore, the AOT of each layer, the stratospheric AOT, and the columnar AOT are stored in the A-ALD product. Later in the processing chain, the columnar AOT at 355 nm is combined with the AOT at longer wavelengths from MSI to derive synergistic Ångström exponents. Both aerosol and cloud parameters are compared with results from the A-TC product, and respective consistency parameters are calculated. In addition, several quality criteria are applied, and the results are stored in the products as well.

Apart from serving as input for synergistic EarthCARE algorithms, ATLID layer products are of interest for many other purposes. Information on layer boundaries, the presence of multiple cloud layers, or the occurrence of lofted

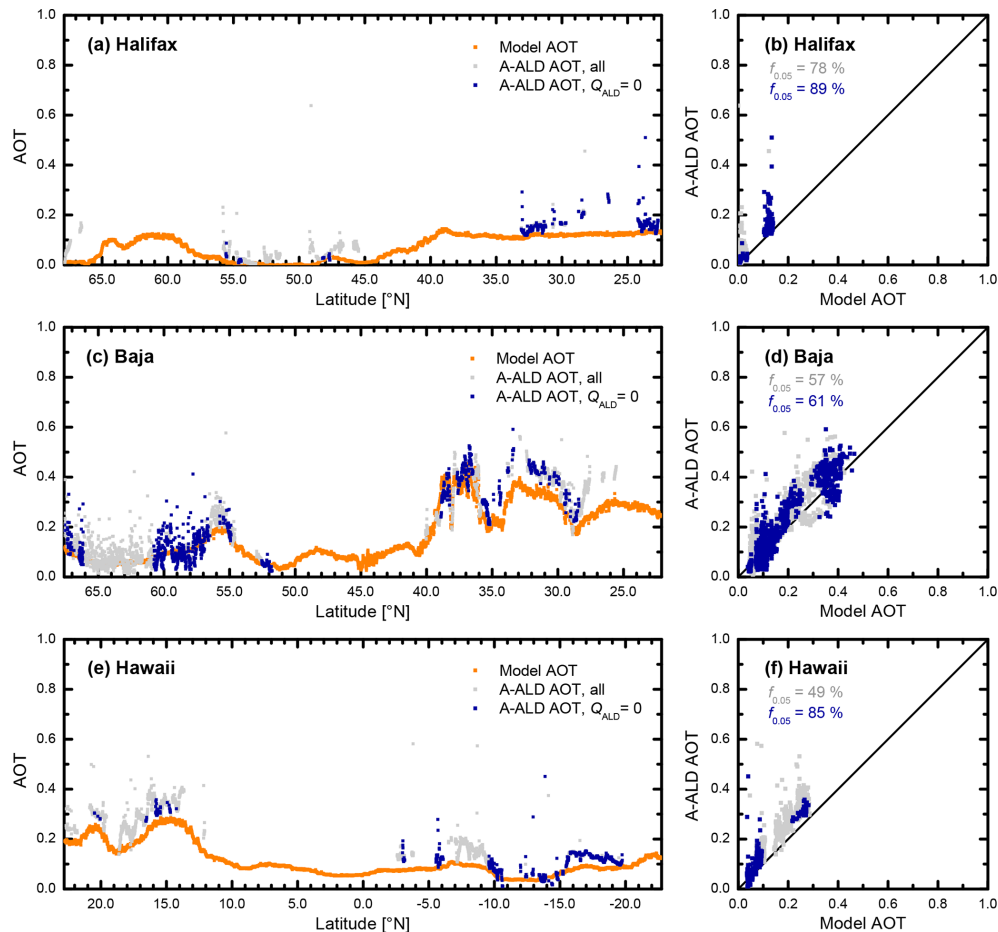


Figure 11. Comparison of the A-ALD columnar AOT with the model truth for (a, b) the Halifax scene, (c, d) the Baja scene, and (e, f) the Hawaii scene. Panels (a), (c), and (e) show the direct comparison along the simulated satellite track and panels (b), (d), and (f) the respective scatterplots. Gray symbols show all pixels for which a columnar AOT is provided in the A-ALD product, while blue symbols indicate those pixels for which the quality status Q_{ALD} is zero. The numbers in the scatterplots stand for the percentage of agreement of data points within an AOT interval of ± 0.05 . The processing of all three scenes was performed with the same parameter settings given in Table 2.

aerosol layers can be directly accessed to validate model outputs and passive remote-sensing retrievals. The A-ALD product contains a unique set of geometrical and optical aerosol layer properties, which is of specific interest to relate EarthCARE to CALIPSO observations and to establish a long-term global aerosol climatology. Furthermore, using both ATLID layer and ATLID profile products, and the information on their consistency, can help identify limitations and uncertainties in the retrievals, e.g., in aerosol–cloud discrimination.

The atmospheric test scenes, which were created for developing, testing, and evaluating all EarthCARE processors (Qu et al., 2022; Donovan et al., 2023b; van Zadelhoff et al., 2023b), have been used to demonstrate the functionality of the A-CTH and A-ALD algorithms. It could be shown that the algorithms perform as expected, particularly regarding the detection of cloud and aerosol layer boundaries. The flexible configuration parameters (e.g., dilation of the wavelet

function, threshold values for WCT and SNR) help to adjust the algorithms to the actual observational and instrumental conditions. In principle, specific settings, e.g., for day/night conditions or certain geographic locations, are possible. Such a kind of fine-tuning requires the analysis of a larger number of real-world data when the mission is in space. The first 6 months after launch (commissioning phase) are dedicated to a thorough evaluation of instrument and algorithm performances. The configuration parameters will be optimized as part of the activities. Validation of the products by independent ground-based and airborne measurements is a crucial task in this context. Thus, joint efforts of algorithm developers and validation teams are highly desirable for all EarthCARE products. The algorithm developments will continue until the launch of EarthCARE, with a specific focus on tests for stratospheric aerosols and clouds. Further algorithm improvements are planned throughout the course of the mission, taking lessons learned into account.

Data availability. The EarthCARE Level 2 demonstration products from simulated scenes, including the A-CTH and A-ALD products discussed in this paper, are available from <https://doi.org/10.5281/zenodo.7728948> (van Zadelhoff et al., 2023b).

Author contributions. UW developed the described algorithms and drafted the manuscript. HB contributed the basics of the WCT methodology. MH performed numerous tests and made various improvements to the algorithms. DD and GJvZ provided the input data from the A-PRO processor. All the authors were involved in the discussion of algorithm developments and tests and contributed material and/or text to the paper.

Competing interests. At least one of the (co-)authors is a member of the editorial board of *Atmospheric Measurement Techniques*. The peer-review process was guided by an independent editor, and the authors also have no other competing interests to declare.

Disclaimer. Publisher's note: Copernicus Publications remains neutral with regard to jurisdictional claims in published maps and institutional affiliations.

Special issue statement. This article is part of the special issue "EarthCARE Level 2 algorithms and data products". It is not associated with a conference.

Acknowledgements. We thank Stefan Horn and Florian Schneider who helped with the technical implementation of the code. We are grateful to Tobias Wehr and Michael Eisinger for their continuous support over many years, and we thank the EarthCARE developer team for valuable discussions in various meetings.

The work on this paper was overshadowed by the sudden and unexpected passing of ESA's EarthCARE mission scientist Tobias Wehr. He is greatly missed. His tireless commitment to the mission and the science community around EarthCARE will not be forgotten.

Financial support. This research has been supported by the European Space Agency (grant nos. 4000112018/14/NL/CT (APRIL) and 4000134661/21/NL/AD (CARDINAL)).

The publication of this article was funded by the Open Access Fund of the Leibniz Association.

Review statement. This paper was edited by Pavlos Kollias and reviewed by three anonymous referees.

References

- Baars, H., Ansmann, A., Engelmann, R., and Althausen, D.: Continuous monitoring of the boundary-layer top with lidar, *Atmos. Chem. Phys.*, 8, 7281–7296, <https://doi.org/10.5194/acp-8-7281-2008>, 2008.
- Baars, H., Kanitz, T., Engelmann, R., Althausen, D., Heese, B., Komppula, M., Preißler, J., Tesche, M., Ansmann, A., Wandinger, U., Lim, J.-H., Ahn, J. Y., Stachlewska, I. S., Amiridis, V., Marinou, E., Seifert, P., Hofer, J., Skupin, A., Schneider, F., Bohlmann, S., Foth, A., Bley, S., Pfüller, A., Gianakaki, E., Lihavainen, H., Viisanen, Y., Hooda, R. K., Pereira, S. N., Bortoli, D., Wagner, F., Mattis, I., Janicka, L., Markowicz, K. M., Achtert, P., Artaxo, P., Pauliquevis, T., Souza, R. A. F., Sharma, V. P., van Zyl, P. G., Beukes, J. P., Sun, J., Rohwer, E. G., Deng, R., Mamouri, R.-E., and Zamorano, F.: An overview of the first decade of PollyNET: an emerging network of automated Raman-polarization lidars for continuous aerosol profiling, *Atmos. Chem. Phys.*, 16, 5111–5137, <https://doi.org/10.5194/acp-16-5111-2016>, 2016.
- Barker, H. W., Cole, J. N. S., Qu, Z., Villefranche, N., and Shephard, M.: EarthCARE's continuous radiative closure assessment: Summary and application to data from a synthetic observing system, in preparation, 2023.
- Berthier, S., Chazette, P., Pelon, J., and Baum, B.: Comparison of cloud statistics from spaceborne lidar systems, *Atmos. Chem. Phys.*, 8, 6965–6977, <https://doi.org/10.5194/acp-8-6965-2008>, 2008.
- Bravo-Aranda, J. A., de Arruda Moreira, G., Navas-Guzmán, F., Granados-Muñoz, M. J., Guerrero-Rascado, J. L., Pozo-Vázquez, D., Arbizu-Barrena, C., Olmo Reyes, F. J., Mallet, M., and Alados Arboledas, L.: A new methodology for PBL height estimations based on lidar depolarization measurements: analysis and comparison against MWR and WRF model-based results, *Atmos. Chem. Phys.*, 17, 6839–6851, <https://doi.org/10.5194/acp-17-6839-2017>, 2017.
- Brooks, I. M.: Finding Boundary Layer Top: Application of a Wavelet Covariance Transform to Lidar Backscatter Profiles, *J. Atmos. Ocean. Tech.*, 20, 1092–1105, [https://doi.org/10.1175/1520-0426\(2003\)020<1092:FBLTAO>2.0.CO;2](https://doi.org/10.1175/1520-0426(2003)020<1092:FBLTAO>2.0.CO;2), 2003.
- Chazette, P., Pelon, J., and Mégie, G.: Determination by spaceborne backscatter lidar of the structural parameters of atmospheric scattering layers, *Appl. Optics*, 40, 3428–3440, <https://doi.org/10.1364/AO.40.003428>, 2001.
- Cohn, S. A. and Angevine, W. M.: Boundary Layer Height and Entrainment Zone Thickness Measured by Lidars and Wind-Profiling Radars, *J. Appl. Meteorol.*, 39, 1233–1247, [https://doi.org/10.1175/1520-0450\(2000\)039<1233:BLHAEZ>2.0.CO;2](https://doi.org/10.1175/1520-0450(2000)039<1233:BLHAEZ>2.0.CO;2), 2000.
- Cole, J. N. S., Barker, H. W., Qu, Z., Villefranche, N., and Shephard, M. W.: Broadband Radiative Quantities for the EarthCARE Mission: The ACM-COM and ACM-RT Products, *Atmos. Meas. Tech. Discuss.* [preprint], <https://doi.org/10.5194/amt-2022-304>, in review, 2022.
- Dang, R., Yang, Y., Hu, X.-M., Wang, Z., and Zhang, S.: A Review of Techniques for Diagnosing the Atmospheric Boundary Layer Height (ABLH) Using Aerosol Lidar Data, *Remote Sens.*, 11, 1590, <https://doi.org/10.3390/rs11131590>, 2019.

- David, C., Bekki, S., Berdunov, N., Marchand, M., Snels, M., and Mégie, G.: Classification and scales of Antarctic polar stratospheric clouds using wavelet decomposition, *J. Atmos. Sol.-Terr. Phys.*, 67, 293–300, <https://doi.org/10.1016/j.jastp.2004.07.043>, 2005.
- Davis, K. J., Gamage, N., Hagelberg, C. R., Kiemle, C., Lenschow, D. H., and Sullivan, P. P.: An Objective Method for Deriving Atmospheric Structure from Airborne Lidar Observations, *J. Atmos. Ocean. Tech.*, 17, 1455–1468, [https://doi.org/10.1175/1520-0426\(2000\)017<1455:AOMFDA>2.0.CO;2](https://doi.org/10.1175/1520-0426(2000)017<1455:AOMFDA>2.0.CO;2), 2000.
- de Bruine, M., Apituley, A., Donovan, D. P., Klein Baltink, H., and de Haij, M. J.: Pathfinder: applying graph theory to consistent tracking of daytime mixed layer height with backscatter lidar, *Atmos. Meas. Tech.*, 10, 1893–1909, <https://doi.org/10.5194/amt-10-1893-2017>, 2017.
- de Haij, M., Wauben, W., and Baltink, H. K.: Determination of mixing layer height from ceilometer backscatter profiles, in: *Remote Sensing of Clouds and the Atmosphere XI*, edited by: Slusser, J. R., Schäfer, K., and Comerón, A., International Society for Optics and Photonics, SPIE, 6362, 158–169, <https://doi.org/10.1117/12.691050>, 2006.
- Docter, N., Preusker, R., Filipitsch, F., Kritten, L., Schmidt, F., and Fischer, J.: Aerosol optical depth retrieval from the EarthCARE Multi-Spectral Imager: the M-AOT product, *Atmos. Meas. Tech.*, 16, 3437–3457, <https://doi.org/10.5194/amt-16-3437-2023>, 2023.
- Donovan, D., van Zadelhoff, G.-J., and Wang, P.: Extinction, backscatter and depolarization retrieval from the EarthCARE high spectral resolution lidar: the A-EBD product, in preparation, 2023a.
- Donovan, D. P., Kollias, P., Velázquez Blázquez, A., and van Zadelhoff, G.-J.: The Generation of EarthCARE L1 Test Data sets Using Atmospheric Model Data Sets, *EGUsphere* [preprint], <https://doi.org/10.5194/egusphere-2023-384>, 2023b.
- Eisinger, M., Marnas, F., Wallace, K., Kubota, T., Tomiyama, N., Ohno, Y., Tanaka, T., Tomita, E., Wehr, T., and Bernaerts, D.: The EarthCARE Mission: Science Data Processing Chain Overview, *EGUsphere* [preprint], <https://doi.org/10.5194/egusphere-2023-1998>, 2023.
- Emeis, S., Schäfer, K., and Munkel, C.: Surface-based remote sensing of the mixing-layer height – a review, *Meteorol. Z.*, 17, 621–630, <https://doi.org/10.1127/0941-2948/2008/0312>, 2008.
- Engelmann, R., Kanitz, T., Baars, H., Heese, B., Althausen, D., Skupin, A., Wandinger, U., Komppula, M., Stachlewska, I. S., Amiridis, V., Marinou, E., Mattis, I., Linné, H., and Ansmann, A.: The automated multiwavelength Raman polarization and water-vapor lidar Polly^{XT}: the neXT generation, *Atmos. Meas. Tech.*, 9, 1767–1784, <https://doi.org/10.5194/amt-9-1767-2016>, 2016.
- Haar, A.: Zur Theorie der orthogonalen Funktionensysteme, *Math. Ann.*, 69, 331–371, <https://doi.org/10.1007/BF01456326>, 1910.
- Haarig, M., Hünerbein, A., Wandinger, U., Docter, N., Bley, S., Donovan, D., and van Zadelhoff, G.-J.: Cloud top heights and aerosol columnar properties from combined EarthCARE lidar and imager observations: the AM-CTH and AM-ACD products, *EGUsphere* [preprint], <https://doi.org/10.5194/egusphere-2023-327>, 2023.
- Haeffelin, M., Angelini, F., Morille, Y., Martucci, G., Frey, S., Gobbi, G. P., Lolli, S., O’Dowd, C. D., Sauvage, L., Xueref-Rémy, I., Wastine, B., and Feist, D. G.: Evaluation of Mixing-Height Retrievals from Automatic Profiling Lidars and Ceilometers in View of Future Integrated Networks in Europe, *Bound.-Lay. Meteorol.*, 143, 49–75, <https://doi.org/10.1127/0941-2948/2008/0312>, 2012.
- Hünerbein, A., Bley, S., Deneke, H., Meirink, J. F., van Zadelhoff, G.-J., and Walther, A.: Cloud optical and physical properties retrieval from EarthCARE multi-spectral imager: the M-COP products, *EGUsphere* [preprint], <https://doi.org/10.5194/egusphere-2023-305>, 2023a.
- Hünerbein, A., Bley, S., Horn, S., Deneke, H., and Walther, A.: Cloud mask algorithm from the EarthCARE Multi-Spectral Imager: the M-CM products, *Atmos. Meas. Tech.*, 16, 2821–2836, <https://doi.org/10.5194/amt-16-2821-2023>, 2023b.
- Illingworth, A. J., Barker, H. W., Beljaars, A., Ceccaldi, M., Chepfer, H., Clerbaux, N., Cole, J., Delanoë, J., Domenech, C., Donovan, D. P., Fukuda, S., Hirakata, M., Hogan, R. J., Huenerbein, A., Kollias, P., Kubota, T., Nakajima, T., Nakajima, T. Y., Nishizawa, T., Ohno, Y., Okamoto, H., Oki, R., Sato, K., Satoh, M., Shephard, M. W., Velazquez-Blazquez, A., Wandinger, U., Wehr, T., and van Zadelhoff, G. J.: THE EARTH-CARE SATELLITE The Next Step Forward in Global Measurements of Clouds, Aerosols, Precipitation, and Radiation, *B. Am. Meteorol. Soc.*, 96, 1311–1332, <https://doi.org/10.1175/bams-d-12-00227.1>, 2015.
- Irbah, A., Delanoë, J., van Zadelhoff, G.-J., Donovan, D. P., Kollias, P., Puigdomènech Treserras, B., Mason, S., Hogan, R. J., and Tatarevic, A.: The classification of atmospheric hydrometeors and aerosols from the EarthCARE radar and lidar: the A-TC, C-TC and AC-TC products, *Atmos. Meas. Tech.*, 16, 2795–2820, <https://doi.org/10.5194/amt-16-2795-2023>, 2023.
- Kollias, P., Puigdomènech Treserras, B., Battaglia, A., Borque, P. C., and Tatarevic, A.: Processing reflectivity and Doppler velocity from EarthCARE’s cloud-profiling radar: the C-FMR, C-CD and C-APC products, *Atmos. Meas. Tech.*, 16, 1901–1914, <https://doi.org/10.5194/amt-16-1901-2023>, 2023.
- Kotthaus, S., Haeffelin, M., Drouin, M.-A., Dupont, J.-C., Grimmond, S., Haeferle, A., Hervo, M., Poltera, Y., and Wiegner, M.: Tailored Algorithms for the Detection of the Atmospheric Boundary Layer Height from Common Automatic Lidars and Ceilometers (ALC), *Remote Sens.*, 12, 3259, <https://doi.org/10.3390/rs12193259>, 2020.
- Lammert, A. and Bösenberg, J.: Determination of the convective boundary-layer height with laser remote sensing, *Bound.-Lay. Meteorol.*, 119, 159–170, <https://doi.org/10.1007/s10546-005-9020-x>, 2006.
- Lewis, J. R., Welton, E. J., Molod, A. M., and Joseph, E.: Improved boundary layer depth retrievals from MPLNET, *J. Geophys. Res.-Atmos.*, 118, 9870–9879, <https://doi.org/10.1002/jgrd.50570>, 2013.
- Menut, L., Flamant, C., Pelon, J., and Flamant, P. H.: Urban boundary-layer height determination from lidar measurements over the Paris area, *Appl. Optics*, 38, 945–954, <https://doi.org/10.1364/AO.38.000945>, 1999.
- Morille, Y., Haeffelin, M., Drobinski, P., and Pelon, J.: STRAT: An Automated Algorithm to Retrieve the Vertical Structure of the Atmosphere from Single-Channel Lidar Data, *J. Atmos. Ocean.*

- Tech., 24, 761–775, <https://doi.org/10.1175/JTECH2008.1.2007>.
- Mroz, K., Treserras, B. P., Battaglia, A., Kollias, P., Tatarevic, A., and Tridon, F.: Cloud and precipitation microphysical retrievals from the EarthCARE Cloud Profiling Radar: the C-CLD product, *Atmos. Meas. Tech.*, 16, 2865–2888, <https://doi.org/10.5194/amt-16-2865-2023>, 2023.
- Nakoudi, K., Stachlewska, I. S., and Ritter, C.: An extended lidar-based cirrus cloud retrieval scheme: first application over an Arctic site, *Opt. Express*, 29, 8553–8580, <https://doi.org/10.1364/OE.414770>, 2021.
- Pappalardo, G., Amodeo, A., Apituley, A., Comeron, A., Freudenthaler, V., Linné, H., Ansmann, A., Bösenberg, J., D’Amico, G., Mattis, I., Mona, L., Wandinger, U., Amiridis, V., Alados-Arboledas, L., Nicolae, D., and Wiegner, M.: EARLINET: towards an advanced sustainable European aerosol lidar network, *Atmos. Meas. Tech.*, 7, 2389–2409, <https://doi.org/10.5194/amt-7-2389-2014>, 2014.
- Qu, Z., Donovan, D. P., Barker, H. W., Cole, J. N. S., Shephard, M. W., and Huijnen, V.: Numerical Model Generation of Test Frames for Pre-launch Studies of EarthCARE’s Retrieval Algorithms and Data Management System, *Atmos. Meas. Tech. Discuss.* [preprint], <https://doi.org/10.5194/amt-2022-300>, in review, 2022.
- Qu, Z., Barker, H. W., Cole, J. N. S., and Shephard, M. W.: Across-track extension of retrieved cloud and aerosol properties for the EarthCARE mission: the ACMB-3D product, *Atmos. Meas. Tech.*, 16, 2319–2331, <https://doi.org/10.5194/amt-16-2319-2023>, 2023.
- Sassen, K., Wang, L., Starr, D. O., Comstock, J. M., and Quante, M.: A Midlatitude Cirrus Cloud Climatology from the Facility for Atmospheric Remote Sensing. Part V: Cloud Structural Properties, *J. Atmos. Sci.*, 64, 2483–2501, <https://doi.org/10.1175/JAS3949.1>, 2007.
- Toledo, D., Córdoba-Jabonero, C., Adame, J. A., Morena, B. D. L., and Gil-Ojeda, M.: Estimation of the atmospheric boundary layer height during different atmospheric conditions: a comparison on reliability of several methods applied to lidar measurements, *Int. J. Remote Sens.*, 38, 3203–3218, <https://doi.org/10.1080/01431161.2017.1292068>, 2017.
- van den Heuvel, J. C., Drienaar, M. L., and Lerou, R. J. L.: Fractal properties and denoising of lidar signals from cirrus clouds, *J. Geophys. Res.-Atmos.*, 105, 3975–3982, <https://doi.org/10.1029/1999JD900972>, 2000.
- van Zadelhoff, G.-J., Donovan, D. P., and Wang, P.: Detection of aerosol and cloud features for the EarthCARE atmospheric lidar (ATLID): the ATLID FeatureMask (A-FM) product, *Atmos. Meas. Tech.*, 16, 3631–3651, <https://doi.org/10.5194/amt-16-3631-2023>, 2023a.
- van Zadelhoff, G.-J., Barker, H. W., Baudrez, E., Bley, S., Clerbaux, N., Cole, J. N. S., de Kloe, J., Docter, N., Domenech, C., Donovan, D. P., Dufresne, J.-L., Eisinger, M., Fischer, J., García-Marañón, R., Haerig, M., Hogan, R. J., Hünerbein, A., Kollias, P., Koopman, R., Madenach, N., Mason, S. L., Preusker, R., Puigdomènech Treserras, B., Qu, Z., Ruiz-Saldaña, M., Shephard, M., Velázquez-Blazquez, A., Villefranque, N., Wandinger, U., Wang, P., and Wehr, T.: EarthCARE level-2 demonstration products from simulated scenes (10.10), Zenodo [data set], <https://doi.org/10.5281/zenodo.7728948>, 2023b.
- Vaughan, M. A., Powell, K. A., Winker, D. M., Hostetler, C. A., Kuehn, R. E., Hunt, W. H., Getzewich, B. J., Young, S. A., Liu, Z., and McGill, M. J.: Fully Automated Detection of Cloud and Aerosol Layers in the CALIPSO Lidar Measurements, *J. Atmos. Ocean. Tech.*, 26, 2034–2050, <https://doi.org/10.1175/2009JTECHA1228.1>, 2009.
- Wandinger, U., Floutsis, A. A., Baars, H., Haerig, M., Ansmann, A., Hünerbein, A., Docter, N., Donovan, D., van Zadelhoff, G.-J., Mason, S., and Cole, J.: HETEAC – the Hybrid End-To-End Aerosol Classification model for EarthCARE, *Atmos. Meas. Tech.*, 16, 2485–2510, <https://doi.org/10.5194/amt-16-2485-2023>, 2023.
- Wang, L. and Sassen, K.: Cirrus Mammatus Properties Derived from an Extended Remote Sensing Dataset, *J. Atmos. Sci.*, 63, 712–725, <https://doi.org/10.1175/JAS3648.1>, 2006.
- Wang, L. and Sassen, K.: Wavelet Analysis of Cirrus Multiscale Structures from Lidar Backscattering: A Cirrus Uncinus Complex Case Study, *J. Appl. Meteorol. Clim.*, 47, 2645–2658, <https://doi.org/10.1175/2008JAMC1788.1>, 2008.
- Wehr, T., Kubota, T., Tzeremes, G., Wallace, K., Nakatsuka, H., Ohno, Y., Koopman, R., Rusli, S., Kikuchi, M., Eisinger, M., Tanaka, T., Taga, M., Deghaye, P., Tomita, E., and Bernaerts, D.: The EarthCARE mission – science and system overview, *Atmos. Meas. Tech.*, 16, 3581–3608, <https://doi.org/10.5194/amt-16-3581-2023>, 2023.
- Winker, D. M., Vaughan, M. A., Omar, A., Hu, Y., Powell, K. A., Liu, Z., Hunt, W. H., and Young, S. A.: Overview of the CALIPSO Mission and CALIOP Data Processing Algorithms, *J. Atmos. Ocean. Tech.*, 26, 2310–2323, <https://doi.org/10.1175/2009JTECHA1281.1>, 2009.
- Zhang, N., Yang, F., and Chen, Y.: Implementation of a 2D Wavelet Method to Probe Mixed Layer Height Using Lidar Observations, *Int. J. Env. Res. Pub. He.*, 16, 2516, <https://doi.org/10.3390/ijerph16142516>, 2019.