



OPEN ACCESS

Original research

Guideline concordance for timely chest imaging after new presentations of dyspnoea or haemoptysis in primary care: a retrospective cohort study

Minjoung Monica Koo ¹, Luke T A Mounce ², Meena Rafiq ¹,
Matthew E J Callister ³, Hardeep Singh ^{4,5}, Gary A Abel ²,
Georgios Lyratzopoulos ¹

► Additional supplemental material is published online only. To view, please visit the journal online (<http://dx.doi.org/10.1136/thorax-2022-219509>).

For numbered affiliations see end of article.

Correspondence to

Prof Georgios Lyratzopoulos, Epidemiology of Cancer Healthcare and Outcomes (ECHO) Group, Dept. of Behavioural Science and Health, Institute of Epidemiology & Health Care (IEHC), University College London, 1-19 Torrington Place, London WC1E 6BT, UK; y.lyratzopoulos@ucl.ac.uk

Received 8 August 2022

Accepted 8 July 2023

ABSTRACT

Background Guidelines recommend urgent chest X-ray for newly presenting dyspnoea or haemoptysis but there is little evidence about their implementation.

Methods We analysed linked primary care and hospital imaging data for patients aged 30+ years newly presenting with dyspnoea or haemoptysis in primary care during April 2012 to March 2017. We examined guideline-concordant management, defined as General Practitioner-ordered chest X-ray/CT carried out within 2 weeks of symptomatic presentation, and variation by sociodemographic characteristic and relevant medical history using logistic regression. Additionally, among patients diagnosed with cancer we described time to diagnosis, diagnostic route and stage at diagnosis by guideline-concordant status.

Results In total, 22 560/162 161 (13.9%) patients with dyspnoea and 4022/8120 (49.5%) patients with haemoptysis received guideline-concordant imaging within the recommended 2-week period. Patients with recent chest imaging pre-presentation were much less likely to receive imaging (adjusted OR 0.16, 95% CI 0.14–0.18 for dyspnoea, and adjusted OR 0.09, 95% CI 0.06–0.11 for haemoptysis). History of chronic obstructive pulmonary disease/asthma was also associated with lower odds of guideline concordance (dyspnoea: OR 0.234, 95% CI 0.225–0.242 and haemoptysis: 0.88, 0.79–0.97). Guideline-concordant imaging was lower among dyspnoea presenters with prior heart failure; current or ex-smokers; and those in more socioeconomically disadvantaged groups. The likelihood of lung cancer diagnosis within 12 months was greater among the guideline-concordant imaging group (dyspnoea: 1.1% vs 0.6%; haemoptysis: 3.5% vs 2.7%).

Conclusion The likelihood of receiving urgent imaging concurs with the risk of subsequent cancer diagnosis. Nevertheless, large proportions of dyspnoea and haemoptysis presenters do not receive prompt chest imaging despite being eligible, indicating opportunities for earlier lung cancer diagnosis.

INTRODUCTION

International and regional variation in cancer outcomes indicates the need for improvement in lung cancer diagnosis.^{1–3} Lung cancer screening for high-risk individuals offers promise,^{4–8} but most

WHAT IS ALREADY KNOWN ON THIS TOPIC

⇒ Guidelines recommend prompt investigation of dyspnoea and haemoptysis in order to support early diagnosis of lung cancer but there is currently little evidence regarding how these guidelines are implemented.

WHAT THIS STUDY ADDS

- ⇒ Substantial proportions of patients newly presenting with dyspnoea or haemoptysis did not receive prompt imaging as recommended by clinical guidelines.
- ⇒ Guideline-concordant imaging was more likely in those later diagnosed with cancer, and less likely in patients who had recently had chest imaging and those with existing respiratory morbidities.
- ⇒ Among dyspnoea presenters, those with prior heart failure; current or ex-smokers; and those in more socioeconomically disadvantaged groups were also less likely to have guideline-concordant imaging.

HOW THIS STUDY MIGHT AFFECT RESEARCH, PRACTICE OR POLICY

- ⇒ Guideline-concordant imaging patterns are suggestive of appropriate clinical reasoning.
- ⇒ However, certain groups at higher risk of lung cancer were less likely to have urgent imaging.
- ⇒ Additionally, large proportions of individuals later diagnosed with cancer had not received urgent imaging indicating possible opportunities to improve earlier detection of lung cancer.

patients are diagnosed with cancer via symptomatic pathways, typically starting in primary care.⁹ Nonetheless, achieving timely diagnosis of symptomatic lung cancer is challenging. The presenting symptoms of lung cancer are often non-specific, and other diagnoses such as chronic obstructive pulmonary disease (COPD), pneumonia and cardiac conditions may offer plausible alternative explanations.

In England and other countries, clinical guidelines have been developed to encourage the recognition and investigation of symptomatic individuals for suspected cancer in primary care.^{10–13} The



© Author(s) (or their employer(s)) 2023. Re-use permitted under CC BY. Published by BMJ.

To cite: Koo MM, Mounce LTA, Rafiq M, *et al.* *Thorax* Epub ahead of print: [please include Day Month Year]. doi:10.1136/thorax-2022-219509

guidelines recommend urgent referral (in England, via the 'two-week wait' fast-track referral pathway) or urgent primary care-led investigation for 'red-flag' symptoms with relatively high positive predictive value for cancer. For patients presenting with haemoptysis or persistent dyspnoea, urgent chest imaging is recommended.^{14 15}

There is currently limited evidence about how primary care referral guidelines for suspected cancer operate in practice. A recent study found that three-fifths of patients with certain alarm symptoms (not including respiratory symptoms) were not referred in spite of guideline recommendations.¹⁶ Understanding guideline implementation could inform the development of quality indicators to improve the diagnostic process.¹⁷ With this goal in mind, we examined the proportion of patients with newly presenting dyspnoea or haemoptysis that received urgent chest imaging concordant with clinical recommendations and related variation by patient-level factors. Additionally, we examined patients diagnosed with cancer in the 12 months following symptomatic presentation by guideline-concordant status.

METHODS

Study design and population

We conducted an observational cohort study using anonymous electronic patient records collected between 1 April 2012 and 15 March 2017. Primary care data from the Clinical Practice Research Datalink (CPRD) GOLD were linked with cancer registration data collated by the National Cancer Registry Analysis Service (NCRAS) and secondary care data, including the English Hospital Episode Statistics Diagnostic Imaging Dataset (HES-DID).

For individuals presenting with haemoptysis or 'unexplained or persistent (longer than 3 weeks)' dyspnoea, the 2005 National Institute for Health and Care Excellence (NICE) guidelines recommend that an urgent chest X-ray is carried out within 2 weeks.¹⁰ We defined two cohorts (each for dyspnoea and haemoptysis) using Read code lists to include individuals aged 30+ years if they had presented with either symptom at least 12 months following practice registration (see online supplemental appendix 1).^{18 19} Patients were excluded if their outcome status could not be confirmed, namely if they presented on or after 16 March 2017 (ie, within 2 weeks from the last reliable date in the available DID data); had left their CPRD practice or had died within 2 weeks of presentation; or if their practice had left CPRD within 2 weeks from their presentation.

It was not possible to distinguish between patients who had experienced dyspnoea for 3 weeks or longer before consulting, and those consulting for new-onset dyspnoea as information on symptom duration was not available. Therefore, the first recorded occurrence in primary care was assumed to represent the first presentation of dyspnoea or haemoptysis, respectively.

Outcome of interest

A guideline-concordant imaging event was defined by applying the following three criteria to the linked DID data (see online supplemental appendix 2 for further details):

1. Imaging modality and body region: A chest X-ray or CT scan of the lung or chest using previously published National Interim Clinical Imaging Procedure (NICIP) and Systematised Nomenclature of MEDicine (SNOMED) code lists for such imaging investigations.²⁰
2. Source of imaging referral: Imaging events ordered by a General Practitioner (GP) and/or from primary care.

3. Time from symptomatic presentation: Chest imaging that took place 0–14 days following symptomatic presentation was assumed to be relevant to the symptom.

Covariates of interest

Sex (male or female) and age group (10-year age bands from 30 to 39 years to 80+ years) were based on information in CPRD, and socioeconomic status (Index of Multiple Deprivation 2015 score quintiles based on patient postcode of residence) from linked national data. Ethnicity was categorised using information in the order of preference from HES inpatient, HES outpatient and HES-DID files and categorised as white, non-white or missing. Cancer diagnoses recorded in the 12 months following symptomatic presentation were based on national cancer registration data. Individuals were categorised as having been diagnosed with lung cancer; non-lung cancer excluding non-melanoma skin cancers (C44) and non-malignant tumours (D-code and in situ tumours); or no cancer. For patients with multiple tumours with the same diagnosis date, lung cancers and tumours with non-missing stage were prioritised over non-lung cancers and tumours with missing stage, respectively.

Each individual was categorised as a non-smoker, ex-smoker or current smoker based on primary care records prior to the date of symptomatic presentation by collating previously published Read code lists for smoking status and smoking cessation product codes and using the last observation carried forward approach to impute values closest to the index date where possible.^{21–25}

Certain pre-existing conditions could serve as alternative explanations of dyspnoea presentation (COPD or asthma, and heart failure) and haemoptysis, thereby influencing the likelihood of receiving guideline-concordant imaging. Therefore, diagnoses of respiratory disease and heart failure recorded in primary care between 78 and 6 months prior to symptomatic presentation were used to categorise patients as having no morbidities; respiratory conditions only; heart failure only; respiratory conditions or heart failure; and both respiratory conditions and heart failure.^{23 26}

Finally, we examined recent prior imaging as another possible explanation for guideline discordance, defined as receipt of primary care-ordered chest imaging up to 6 weeks prior to symptomatic presentation (specifically during a period from –42 days to –1 day from the index date).

Statistical analyses

The two patient-based symptom cohorts were examined independently of each other. Descriptive statistics followed by crude and adjusted logistic regression models were used to examine variation in guideline-concordant imaging by patient-level covariates (sex, age group, ethnicity, smoking status and pre-existing respiratory disease and heart failure). We considered two adjusted models: the first excluded cancer diagnosis status (as this is not known at the time of presentation when decision-making for using imaging takes place), while the second included cancer diagnosis as a covariate (as while this occurs after presentation, it may act as a marker of other unmeasured characteristics of individuals with lung cancer, eg, symptom severity and other features that may have been present at presentation and taken into account by the primary care physician).

Subsequently, among the subgroups of patients in each cohort who were diagnosed with lung cancer, descriptive statistics were used to compare stage at diagnosis (tumour, node, metastases (TNM) stages 1/2, 3/4 or missing), route to diagnosis (one of eight routes as established by NCRAS²⁷) and time from symptomatic presentation to diagnosis (the diagnostic interval²⁸) by imaging status, using χ^2 tests for significance.

Supplementary analyses

We undertook the following supplementary analyses, which are reported in the online supplemental appendix:

- ▶ Considering an imaging interval of 0–28 days from symptomatic presentation (instead of 14 days, as in the main analysis) (online supplemental appendix 3).
- ▶ Considering imaging ordered from any source within 14 days of symptomatic presentation (instead of just primary care-ordered imaging, as in the main analysis) (online supplemental appendix 4).

RESULTS

Study population

A total of 162 161 individuals with newly presenting dyspnoea and 8120 individuals with newly presenting haemoptysis were included (table 1). The majority of individuals in both symptom cohorts were 60 years or older, white and either ex-smokers or current smokers as opposed to non-smokers.

Guideline-concordant imaging

A total of 22 560/162 161 (13.9%) patients with dyspnoea and 4022/8120 (49.5%) patients with haemoptysis received guideline-concordant imaging, namely primary care-ordered chest imaging within 2 weeks of presentation (tables 2 and 3).

Among both cohorts, women, the youngest age groups (30–39 and 40–49 year-olds) and those with missing ethnicity were less likely to receive guideline-concordant imaging compared with men, 50–59 year-olds and white individuals, respectively. Individuals who had had chest imaging in the 6 weeks prior to symptomatic presentation were much less likely to receive guideline-concordant imaging (adjusted OR (aOR) 0.16, 95% CI 0.14–0.18 in dyspnoea cohort; aOR 0.09, 95% CI 0.06–0.11 in haemoptysis cohort). History of COPD/asthma was also associated with much lower odds of guideline concordance in dyspnoea presenters (aOR 0.23, 95% CI 0.23–0.24) with a much weaker though similar in direction association among haemoptysis presenters (0.88, 0.79–0.97).

In the dyspnoea cohort, individuals with lower socioeconomic status, current/ex-smokers and individuals with morbidities were less likely to receive imaging. Individuals with pre-existing COPD/asthma or heart failure were much less likely to receive imaging for dyspnoea, with the lowest odds of imaging seen among patients with both morbidity types (0.20, 0.17–0.24).

Adjustment for cancer made no material difference to the associations between sociodemographic variables and guideline-concordant imaging. Individuals who were diagnosed with lung cancer in the year post-presentation were more likely to have received urgent imaging for newly presenting dyspnoea or haemoptysis (2.07, 1.78–2.41 and 1.39, 1.06–1.83, respectively). A similar association was also observed among patients later diagnosed with other cancer types following a dyspnoea presentation (1.33, 1.20–1.48), but without such evidence for haemoptysis.

Lung cancer outcomes by imaging status

The proportion of patients subsequently diagnosed with lung cancer among those who received guideline-concordant imaging was twice as high compared with those not promptly imaged (1.1% vs 0.6%, $p<0.001$) for dyspnoea presenters, and a third higher for haemoptysis presenters (3.6% vs 2.7%, $p=0.076$) (table 4). However, the majority (854/1103, 70%) of dyspnoea presenters and (110/253, 43%) of haemoptysis presenters subsequently diagnosed with lung cancer did not receive guideline-concordant imaging.

Compared with those who did not receive guideline-concordant imaging, a slightly higher proportion of those who

Table 1 Composition of the dyspnoea cohort (n=162 161) and haemoptysis cohort (n=8120)

	Dyspnoea N (%)	Haemoptysis N (%)	P value*
Total	162 161 (100)	8120 (100)	
Sex			
Men	75 683 (47)	4728 (58)	<0.001
Women	86 478 (53)	3392 (42)	
Age group (years)			
30–39	9549 (6)	904 (11)	<0.001
40–49	16 602 (10)	1218 (15)	
50–59	24 772 (15)	1477 (18)	
60–69	38 835 (24)	1768 (22)	
70–79	40 491 (25)	1646 (20)	
80+	31 912 (20)	1107 (14)	
Ethnicity			
White	143 726 (89)	6857 (84)	<0.001
Non-white	7822 (5)	746 (9)	
Missing	10 613 (7)	517 (6)	
IMD quintile			
1 (least deprived)	32 621 (20)	1592 (20)	0.081
2	33 848 (21)	1614 (20)	
3	33 628 (21)	1704 (21)	
4	31 480 (19)	1619 (20)	
5 (most deprived)	30 514 (19)	1588 (20)	
Smoking status			
Non-smoker	34 576 (21)	1955 (24)	<0.001
Ex-smoker	69 667 (43)	3121 (38)	
Current smoker	57 559 (35)	3024 (37)	
Missing	359 (0.2)	20 (0.2)	
Morbidities†			
No COPD/asthma or HF	86 129 (53)	5596 (69)	<0.001
HF only	3417 (2)	144 (2)	
COPD/asthma only	70 008 (43)	2281 (28)	
COPD/asthma and HF	2607 (2)	99 (1)	
Imaging in the 6 weeks prior to presentation			
No prior imaging	153 538 (95)	7567 (93)	<0.001
Prior imaging	8623 (5)	553 (7)	
Cancer diagnosis in the year following symptomatic presentation			
No	158 575 (98)	7742 (95)	<0.001
Yes (lung cancer)	1103 (1)	253 (3)	
Yes (other cancer)	2483 (2)	125 (2)	

*From χ^2 test.

†Recorded in a period from 6 to 78 months prior to symptomatic presentation.

Respiratory disease=COPD/asthma.

COPD, chronic obstructive pulmonary disease; HF, heart failure; IMD, Index of Multiple Deprivation.

Table 2 Receipt of guideline-concordant imaging within 2 weeks from presentation among patients with newly presenting dyspnoea (n=162 161)

Dyspnoea	Total	Guideline-concordant imaging n (%)	Crude OR (95% CI)	Adjusted OR (95% CI)*	Adjusted OR (95% CI)†
Total	162 161	22 560 (14)	–	–	–
Sex			<0.001	<0.001	<0.001
Men	75 683	10 842 (14)	Ref	Ref	Ref
Women	86 478	11 718 (14)	0.94 (0.91 to 0.96)	0.93 (0.90 to 0.95)	0.93 (0.90 to 0.96)
Age group (years)			<0.001	<0.001	<0.001
30–39	9549	904 (9)	0.65 (0.61 to 0.71)	0.55 (0.51 to 0.60)	0.55 (0.51 to 0.60)
40–49	16 602	2216 (13)	0.96 (0.91 to 1.02)	0.88 (0.83 to 0.93)	0.88 (0.83 to 0.93)
50–59	24 772	3413 (14)	Ref	Ref	Ref
60–69	38 835	5462 (14)	1.02 (0.98 to 1.07)	1.10 (1.04 to 1.15)	1.09 (1.04 to 1.14)
70–79	40 491	6084 (15)	1.11 (1.06 to 1.16)	1.14 (1.09 to 1.19)	1.13 (1.08 to 1.18)
80+	31 912	4481 (14)	1.02 (0.97 to 1.07)	0.93 (0.88 to 0.98)	0.92 (0.87 to 0.97)
Ethnicity			<0.001	<0.001	<0.001
White	143 726	20 297 (14)	Ref	Ref	Ref
Non-white	7822	1139 (15)	1.04 (0.97 to 1.11)	0.96 (0.90 to 1.03)	0.97 (0.90 to 1.04)
Missing	10 613	1124 (11)	0.72 (0.68 to 0.77)	0.68 (0.64 to 0.73)	0.68 (0.64 to 0.73)
IMD quintile			<0.001	0.001	0.001
1 (least deprived)	32 621	5052 (15)	Ref	Ref	Ref
2	33 848	4754 (14)	0.89 (0.85 to 0.93)	0.93 (0.89 to 0.97)	0.93 (0.89 to 0.97)
3	33 628	4816 (14)	0.91 (0.87 to 0.95)	0.97 (0.93 to 1.01)	0.97 (0.93 to 1.01)
4	31 480	4173 (13)	0.83 (0.80 to 0.87)	0.94 (0.90 to 0.98)	0.94 (0.90 to 0.98)
5 (most deprived)	30 514	3752 (12)	0.77 (0.73 to 0.80)	0.91 (0.87 to 0.96)	0.91 (0.87 to 0.95)
Smoking status			<0.001	<0.001	<0.001
Non-smoker	34 576	5817 (17)	Ref	Ref	Ref
Ex-smoker	69 667	9483 (14)	0.78 (0.75 to 0.81)	0.94 (0.91 to 0.98)	0.94 (0.90 to 0.98)
Current smoker	57 559	7215 (13)	0.71 (0.68 to 0.74)	0.88 (0.85 to 0.92)	0.88 (0.84 to 0.91)
Missing	359	45 (13)	0.71 (0.52 to 0.97)	0.63 (0.46 to 0.86)	0.62 (0.45 to 0.85)
Morbidities‡			<0.001	<0.001	<0.001
No COPD/asthma or HF	86 129	17 678 (21)	Ref	Ref	Ref
HF only	3417	502 (15)	0.67 (0.61 to 0.73)	0.61 (0.55 to 0.67)	0.61 (0.55 to 0.67)
COPD/asthma only	70 008	4235 (6)	0.25 (0.24 to 0.26)	0.23 (0.23 to 0.24)	0.23 (0.23 to 0.24)
COPD/asthma and HF	2607	145 (6)	0.23 (0.19 to 0.27)	0.20 (0.17 to 0.24)	0.20 (0.17 to 0.24)
Imaging in the 6 weeks prior to presentation			<0.001	<0.001	<0.001
No prior imaging	153 538	22 271 (15)	Ref	Ref	Ref
Prior imaging	8623	289 (3)	0.20 (0.18 to 0.23)	0.16 (0.14 to 0.18)	0.16 (0.14 to 0.18)
Cancer diagnosis in the year following symptomatic presentation			<0.001		<0.001
No cancer	158 575	21 840 (14)	Ref	–	Ref
Lung cancer	1103	249 (23)	1.83 (1.58 to 2.10)	–	2.07 (1.78 to 2.41)
Other cancer	2483	471 (19)	1.47 (1.32 to 1.62)	–	1.33 (1.20 to 1.48)

Joint testing p values are presented in italics.

Cell values are provided in bold when accompanying 95% confidence interval values exclude parity (1.0).

*Adjusting for sex, age, ethnicity, IMD quintile, smoking status, morbidities and prior imaging.

†Adjusting for sex, age, ethnicity, IMD quintile, smoking status, morbidities, prior imaging and cancer diagnosis.

‡Recorded in the 78 months to 6 months prior to symptomatic presentation.

COPD, chronic obstructive pulmonary disease; HF, heart failure; IMD, Index of Multiple Deprivation

Table 3 Receipt of guideline-concordant imaging within 2 weeks from presentation among patients with haemoptysis (n=8120)

Haemoptysis	Total	Guideline-concordant imaging n (%)	Crude OR (95% CI)	Adjusted OR (95% CI)*	Adjusted OR (95% CI)†
Total	8120	4022 (50)	–	–	–
Sex			<i>0.007</i>	<i>0.001</i>	<i>0.001</i>
Men	4728	2402 (51)	Ref	Ref	Ref
Women	3392	1620 (48)	0.89 (0.81 to 0.97)	0.85 (0.77 to 0.93)	0.85 (0.77 to 0.93)
Age group (years)			<i><0.001</i>	<i><0.001</i>	<i><0.001</i>
30–39	904	369 (41)	0.69 (0.58 to 0.81)	0.65 (0.55 to 0.77)	0.66 (0.55 to 0.78)
40–49	1218	566 (46)	0.86 (0.74 to 1.01)	0.84 (0.72 to 0.98)	0.84 (0.72 to 0.98)
50–59	1477	740 (50)	Ref	Ref	Ref
60–69	1768	979 (55)	1.24 (1.08 to 1.42)	1.28 (1.11 to 1.48)	1.27 (1.10 to 1.47)
70–79	1646	856 (52)	1.08 (0.94 to 1.24)	1.15 (0.99 to 1.34)	1.14 (0.98 to 1.32)
80+	1107	512 (46)	0.86 (0.73 to 1.00)	0.89 (0.75 to 1.05)	0.88 (0.74 to 1.04)
Ethnicity			<i>0.001</i>	<i><0.001</i>	<i><0.001</i>
White	6857	3438 (50)	Ref	Ref	Ref
Non-white	746	369 (49)	0.97 (0.84 to 1.13)	1.04 (0.88 to 1.22)	1.04 (0.89 to 1.22)
Missing	517	215 (42)	0.71 (0.59 to 0.85)	0.69 (0.57 to 0.83)	0.69 (0.58 to 0.84)
IMD quintile			<i>0.416</i>	<i>0.157</i>	<i>0.171</i>
1 (least deprived)	1592	789 (50)	Ref	Ref	Ref
2	1614	797 (49)	0.99 (0.86 to 1.14)	0.99 (0.86 to 1.14)	0.99 (0.86 to 1.14)
3	1704	855 (50)	1.02 (0.89 to 1.18)	1.02 (0.89 to 1.18)	1.02 (0.89 to 1.18)
4	1619	771 (48)	0.93 (0.81 to 1.06)	0.90 (0.78 to 1.04)	0.90 (0.78 to 1.04)
5 (most deprived)	1588	809 (51)	1.06 (0.92 to 1.21)	1.08 (0.94 to 1.26)	1.08 (0.93 to 1.25)
Smoking status			<i>0.760</i>	<i>0.426</i>	<i>0.432</i>
Non-smoker	1955	951 (49)	Ref	Ref	Ref
Ex-smoker	3121	1547 (50)	1.04 (0.93 to 1.16)	0.98 (0.86 to 1.10)	0.97 (0.86 to 1.10)
Current smoker	3024	1515 (50)	1.06 (0.95 to 1.19)	1.06 (0.94 to 1.19)	1.05 (0.93 to 1.19)
Missing	20	9 (45)	0.86 (0.36 to 2.09)	0.75 (0.30 to 1.84)	0.75 (0.31 to 1.85)
Morbidities‡			<i>0.182</i>	<i>0.065</i>	<i>0.063</i>
No COPD/asthma or HF	5596	2799 (50)	Ref	Ref	Ref
HF only	144	80 (56)	1.25 (0.90 to 1.74)	1.13 (0.80 to 1.60)	1.14 (0.81 to 1.62)
COPD/asthma only	2281	1094 (48)	0.92 (0.84 to 1.02)	0.88 (0.79 to 0.97)	0.88 (0.79 to 0.97)
COPD/asthma and HF	99	49 (49)	0.98 (0.66 to 1.46)	0.86 (0.57 to 1.30)	0.87 (0.58 to 1.31)
Imaging in the 6 weeks prior to presentation			<i><0.001</i>	<i><0.001</i>	<i><0.001</i>
No prior imaging	7567	3971 (52)	Ref	Ref	Ref
Prior imaging	553	51 (9)	0.09 (0.07 to 0.12)	0.09 (0.06 to 0.12)	0.09 (0.06 to 0.11)
Cancer diagnosis in the year following symptomatic presentation			<i>0.077</i>		<i>0.057</i>
No cancer	7742	3816 (49)	Ref	–	Ref
Lung cancer	253	143 (57)	1.34 (1.04 to 1.72)	–	1.39 (1.06 to 1.83)
Other cancer	125	63 (50)	1.05 (0.73 to 1.49)	–	1.05 (0.72 to 1.52)

Joint testing p values are presented in italics.

Cell values are provided in bold when accompanying 95% confidence interval values exclude parity (1.0).

*Adjusting for sex, age, ethnicity, IMD quintile, smoking status, morbidities and prior imaging.

†Adjusting for sex, age, ethnicity, IMD quintile, smoking status, morbidities, prior imaging and cancer diagnosis.

‡Recorded in the 78 months to 6 months prior to symptomatic presentation.

COPD, chronic obstructive pulmonary disease; HF, heart failure; IMD, Index of Multiple Deprivation

received imaging were diagnosed with advanced stage (TNM stages III–IV) among both dyspnoea and haemoptysis cohorts though this may have been a chance finding (table 5).

There was substantial variation in diagnostic route. Patients who received guideline-concordant imaging following dyspnoea or haemoptysis presentation were more likely to have been diagnosed

via the two-week wait pathway for suspected cancer (43% vs 27% for dyspnoea; 59% vs 35% for haemoptysis), and less likely to be diagnosed via an emergency compared with those who did not receive guideline-concordant imaging, particularly for haemoptysis presenters (30% vs 38% for dyspnoea; 9% vs 30% for haemoptysis;

Table 4 Cancer diagnoses in the year following symptomatic presentation by imaging status

	Dyspnoea		Haemoptysis	
	No guideline-concordant imaging within 2 weeks from presentation	Guideline-concordant imaging within 2 weeks from presentation	No guideline-concordant imaging within 2 weeks from presentation	Guideline-concordant imaging within 2 weeks from presentation
Total (%)	139 601 (86)	22 560 (14)	4098 (50)	4022 (50)
No cancer (%)	136 735 (98)	21 840 (97)	3926 (96)	3816 (95)
Lung cancer (%)	854 (0.6)	249 (1.1)	110 (2.7)	143 (3.6)
Non-lung cancer (%)	2012 (1.4)	471 (2.1)	62 (1.5)	63 (1.6)
P value*	<0.001		0.076	
*X ² test.				

$p < 0.001$ for overall variation by concordant imaging status by diagnostic routes in both cohorts, [table 5](#)).

Diagnostic interval among patients with lung cancer

Patients with dyspnoea who were subsequently diagnosed with lung cancer had a median (IQR) diagnostic interval of 83 (28–205) days, while among patients with haemoptysis this was 39 (21–71) days.

Patients who received imaging following dyspnoea presentation had a shorter diagnostic interval than those who did not (median: 34 vs 114 days, nearly a fourfold difference). In comparison, there was little difference in the distribution of time to cancer diagnosis by imaging status in the smaller haemoptysis cohort (median: 39 days for both groups) ([figure 1](#)).

Supplementary analyses

Additional analyses considering a 4-week interval in which imaging took place (online supplemental appendix 3), or imaging ordered from secondary care and other sources in addition to imaging ordered by GPs (online supplemental appendix 4) identified a greater number of patients who received guideline-concordant imaging but patterns of variation by patient factors remained largely unchanged. One exception was in the haemoptysis cohort, where current smokers and patients subsequently diagnosed with lung cancer were more likely to have receive prompt imaging (whereas there was no such evidence in the main analysis).

DISCUSSION

Summary of findings

Less than one in seven patients with newly presenting dyspnoea and one in two patients with newly presenting haemoptysis received primary care-ordered chest imaging within 2 weeks of presentation in line with national guidelines. Women, younger patients, individuals who had received chest imaging before presentation and those with pre-existing COPD or asthma were less likely to receive guideline-concordant imaging, while individuals diagnosed with lung cancer in the year following presentation were more likely to have been promptly imaged. Of those who subsequently received a lung cancer diagnosis, most patients presenting with dyspnoea (854/1103, 70%) and many patients presenting with haemoptysis (110/253, 43%) had not received timely imaging.

In both cohorts, those who did not receive prompt imaging before lung cancer diagnosis were more likely to be diagnosed as emergencies. Among patients with lung cancer initially presenting with dyspnoea, prompt imaging was associated with shorter intervals to diagnosis.

Comparison with prior literature

A study examining urgent primary care referrals for six 'red-flag' cancer symptoms found that only 40% of eligible patients received an urgent referral within 14 days of presentation, with substantial variation by symptom¹⁶; in our study, the corresponding figures for prompt chest imaging being 14% and 50%

Table 5 Lung cancer-related outcomes by imaging status

	Patients with dyspnoea diagnosed with lung cancer (N=1103)		Patients with haemoptysis diagnosed with lung cancer (N=253)	
	No guideline-concordant imaging	Guideline-concordant imaging	No guideline-concordant imaging	Guideline-concordant imaging
Total, N (%)	854 (77)	249 (23)	110 (43)	143 (57)
Stage at diagnosis	P=0.116*		P=0.673*	
Stages I–II (%)	161 (19)	38 (15)	24 (22)	29 (20)
Stages III–IV (%)	561 (66)	181 (73)	71 (65)	99 (69)
Stage missing (%)	132 (15)	30 (12)	15 (14)	15 (10)
Route to diagnosis	P<0.001*		P<0.001*	
TWW (%)	232 (27)	106 (43)	38 (35)	84 (59)
General Practitioner referral (%)	160 (19)	47 (19)	25 (23)	33 (23)
Emergency (%)	323 (38)	75 (30)	33 (30)	13 (9)
Hospital (%)	124 (15)	18 (7)	12 (11)	11 (8)
DCO/unknown (%)	15 (2)	3 (1)	2 (2)	2 (1)

*X² test p value.

DCO, death certificate only; TWW, two-week wait (fast-track referral pathway for suspected cancer)²⁷.

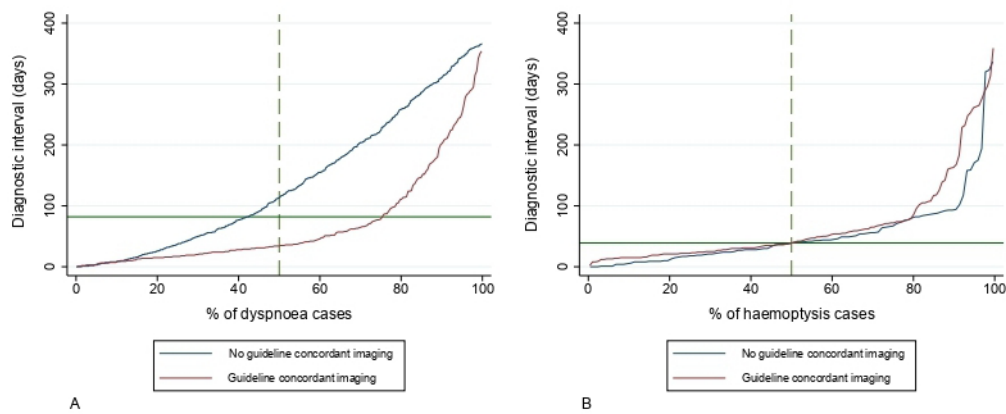


Figure 1 Time from symptomatic presentation to lung cancer diagnosis by imaging status in 1103 patients with dyspnoea (A) and 253 patients with haemoptysis (B). The horizontal green line represents the median diagnostic interval in all patients with lung cancer in the dyspnoea cohort (83 days) and the haemoptysis cohort (39 days), respectively.

for dyspnoea and haemoptysis, respectively. The proportion of symptomatic patients who were subsequently diagnosed with cancer without having received an urgent or fast-track referral ranged from 2.8% to 9.5% by symptom; in comparison, we found the respective proportions for lung cancer to be 0.6% of dyspnoea presenters and 2.7% of haemoptysis presenters. Our results are also aligned to a US study that identified 38% of patients with lung cancer had had a missed opportunity,²⁹ and a study using English electronic health records data that found 65% of patients with lung cancer who had a chest X-ray had received it 2 weeks or longer after presentation.³⁰

Our findings indicate that patients with lung cancer who received guideline-concordant imaging had shorter diagnostic intervals but a higher proportion were diagnosed with advanced stage; this concurs with previous research on patient populations with lung cancer that reported shorter diagnostic intervals among those with late-stage versus early-stage cancer.^{31 32} This may also reflect confounding by indication and the waiting time paradox which has been previously described.³³

Strengths and limitations

We analysed nationally representative linked primary care data. The HES-DID and NCRAS data sets represent gold standard sources of information on ascertaining imaging investigations³⁴ and cancer diagnoses,³⁵ respectively.

We acknowledge several limitations. First, factors beyond clinical decision-making in primary care such as imaging capacity and patients' ability to attend for the ordered investigations may have influenced whether or not guideline-concordant imaging occurred. Nevertheless, when we examined a longer period for the imaging to occur (online supplemental appendix 3) or included imaging ordered by other sources (online supplemental appendix 4), there remained substantial numbers of eligible individuals who did not receive prompt imaging. Furthermore, CT imaging may be subject to longer waiting times due to capacity constraints in comparison to X-rays. However, the vast majority (99%) of imaging events conducted in the chest region in both symptom cohorts (within 2 weeks from presentation or with no time constraint) were chest X-rays not CT imaging (data not shown).

The 2005 NICE guidelines indicate that patients with *persistent* dyspnoea should be ordered urgent chest imaging, defined as lasting 3 weeks or more.¹⁰ Some of the individuals in our dyspnoea cohort may have presented with dyspnoea less

than 3 weeks after onset, leading to the underestimation of the true proportion of clinically eligible individuals receiving guideline-concordant imaging. Free text primary care records data could have captured this kind of detail, but are not available for research purposes due to resource constraints in ensuring non-disclosivity of the data.³⁶

We assumed that the chest imaging events identified following presentation were related and not incidental to the dyspnoea or haemoptysis, which could have led to the overestimation of guideline concordance. Similarly, we examined lung cancers that were diagnosed in the 12 months following symptomatic presentation: some of these cancers could also have been unrelated to the coded symptom. However, most imaging was conducted within the first 1–2 days from presentation, and the majority of lung cancers diagnosed in the 12 months after presentation were identified in the first 6 months (71% and 93% for dyspnoea and haemoptysis, respectively), supporting the validity of our assumptions (data not shown).

Implications

Individuals who presented with dyspnoea or haemoptysis and were later diagnosed with lung cancer were more likely to have received guideline-concordant imaging than symptomatic individuals who were not diagnosed with lung cancer. This suggests appropriate clinical decision-making took place for these individuals, though we must acknowledge there are additional patient, doctor and system-level factors contributing to urgent imaging taking place following presentation.

Some of the observed variation in guideline-concordant imaging may have a plausible explanation. Individuals with pre-existing respiratory disease and/or heart failure were less likely to receive urgent imaging, possibly because the symptoms were attributed to those conditions.³⁷ Women, younger patients and those who had had imaging prior to presentation were also less likely to receive guideline-concordant care, which may reflect appropriate assessment of the lower prior risk of lung cancer in these groups (compared with men, older patients and individuals who had not been ordered chest imaging recently, respectively).

Nevertheless, other patterns of variation are harder to explain: current or ex-smokers and patients residing in poorer neighbourhoods were less likely to receive prompt imaging for dyspnoea despite being at relatively higher risk of lung cancer compared with non-smokers or more affluent patients.³⁸ These associations require further elucidation, including through qualitative studies.

Substantial proportions of the individuals later diagnosed with cancer did not receive guideline-concordant imaging, potentially representing missed opportunities for earlier lung cancer diagnosis. Clinical case note review could enhance our understanding of the reasons for guideline discordance and missed opportunities.^{39 40} Nevertheless, the findings demonstrate the potential for investigation or referral activity captured in electronic health record systems to be used as a diagnostic quality indicator. Additionally, examining provider-level variability in guideline-concordant care could be informative,⁴¹ noting that guideline concordance increased when we examined imaging ordered by all sources and not just primary care.

A critical consideration prior to improving guideline adherence is imaging access and capacity. Chest X-rays may miss 20% of symptomatic lung cancers⁴² while CT capacity has been insufficient in England since before the emergence of COVID-19.⁴³ The recently launched community diagnostic centres (aiming to improve access to diagnostic tests outside of hospital settings) could form part of service redesigns aimed at improving lung cancer diagnosis pathways.⁴⁴

CONCLUSION

In the context of cancer diagnosis, primary care-ordered urgent imaging patterns broadly accord with clinical risk. However, large proportions of dyspnoea or haemoptysis presenters do not receive prompt imaging, likely representing missed opportunities for more timely lung cancer diagnosis, especially in patients with haemoptysis. Developing quality metrics based on guideline concordance for prompt chest imaging could improve the quality and equity of urgent imaging in primary care.

Author affiliations

¹Epidemiology of Cancer Healthcare and Outcomes (ECHO) Group, Dept. of Behavioural Science and Health, Institute of Epidemiology & Health Care (IEHC), UCL, London, UK

²Exeter Collaboration for Academic Primary Care (APEX), University of Exeter Medical School, Exeter, UK

³Department of Respiratory Medicine, Leeds Teaching Hospitals NHS Trust, Leeds, UK

⁴Center for Innovations in Quality, Effectiveness, and Safety (IQESt), Michael E. DeBakey Veterans Affairs Medical Center and Baylor College of Medicine, Houston, Texas, USA

⁵Health Services Research Section, Department of Medicine, Baylor College of Medicine, Houston, Texas, USA

Twitter Minjoung Monica Koo @mmkoo12, Luke T A Mounce @LukeMounce, Meena Rafiq @DrMeenaRafiq, Matthew E J Callister @CallisterMat, Hardeep Singh @HardeepSinghMD, Gary A Abel @garyabel and Georgios Lyratzopoulos @glyratzopoulos

Acknowledgements This study is based in part on data from the Clinical Practice Research Datalink obtained under licence from the UK Medicines and Healthcare products Regulatory Agency. The data is provided by patients and collected by the NHS as part of their care and support. The interpretation and conclusions contained in this study are those of the author/s alone. The study was approved by the MHRA (UK) Independent Scientific Advisory Committee, protocol number 18_299RMnA5, under Section 251 (NHS Social Care Act 2006).

Contributors MMK, GL and GAA conceptualised and designed the study. MMK undertook data analysis with support and input from LTAM and GA. MR, HS and MEJC provided clinical commentary on methods and interpretation. MMK drafted the initial manuscript, with critical revision of the article from all authors. MMK is responsible for the overall content as guarantor.

Funding The research was supported by the Gordon and Betty Moore Foundation (GBMF 8838). Additionally, GL acknowledges funding from a Cancer Research UK Clinician Advanced Scientist Fellowship (C18081/A18180); HS reports receiving grants from the Houston Veterans Administration (VA) Health Services Research and Development (HSR&D) Center for Innovations in Quality, Effectiveness, and Safety (CIN13-413), the VA HSR&D Service (IIR17-127), the VA National Center for Patient Safety, the Agency for Healthcare Research and Quality (R18 HS029347 and R01HS27363), and the Gordon and Betty Moore Foundation and serving as co-Chair of The Leapfrog Group's National Advisory Group for Recognizing Excellence in Diagnosis; to end of 2022, GL was Associate Director, HS and GAA were

Senior Faculty members, and MMK and MR were Faculty members of the CanTest Collaborative, funded by Cancer Research UK (C8640/A23385).

Disclaimer The interpretation and conclusions contained in this study are those of the authors alone.

Competing interests None declared.

Patient consent for publication Not applicable.

Provenance and peer review Not commissioned; externally peer reviewed.

Data availability statement Restrictions apply to the availability of these data, which were used under licence for the current study, and so are not publicly available. For reusing these data, an application must be made directly to the Clinical Practice Research Datalink (CPRD); www.cprd.com.

Supplemental material This content has been supplied by the author(s). It has not been vetted by BMJ Publishing Group Limited (BMJ) and may not have been peer-reviewed. Any opinions or recommendations discussed are solely those of the author(s) and are not endorsed by BMJ. BMJ disclaims all liability and responsibility arising from any reliance placed on the content. Where the content includes any translated material, BMJ does not warrant the accuracy and reliability of the translations (including but not limited to local regulations, clinical guidelines, terminology, drug names and drug dosages), and is not responsible for any error and/or omissions arising from translation and adaptation or otherwise.

Open access This is an open access article distributed in accordance with the Creative Commons Attribution 4.0 Unported (CC BY 4.0) license, which permits others to copy, redistribute, remix, transform and build upon this work for any purpose, provided the original work is properly cited, a link to the licence is given, and indication of whether changes were made. See: <https://creativecommons.org/licenses/by/4.0/>.

ORCID iDs

Minjoung Monica Koo <http://orcid.org/0000-0001-9832-9872>
 Luke T A Mounce <http://orcid.org/0000-0002-6089-0661>
 Meena Rafiq <http://orcid.org/0000-0002-1837-1542>
 Matthew E J Callister <http://orcid.org/0000-0001-8157-0803>
 Hardeep Singh <http://orcid.org/0000-0002-4419-8974>
 Gary A Abel <http://orcid.org/0000-0003-2231-5161>
 Georgios Lyratzopoulos <http://orcid.org/0000-0002-2873-7421>

REFERENCES

- 1 Arnold M, Rutherford MJ, Bardot A, *et al*. Progress in cancer survival, mortality, and incidence in seven high-income countries 1995-2014 (ICBP SURVMARK-2): a population-based study. *Lancet Oncol* 2019;20:1493-505.
- 2 Walters S, Benitez-Majano S, Muller P, *et al*. Is England closing the International gap in cancer survival? *Br J Cancer* 2015;113:848-60.
- 3 Arik A, Dodd E, Strefaris G. Cancer morbidity trends and regional differences in England—A Bayesian analysis. *PLoS One* 2020;15:e0232844.
- 4 de Koning HJ, van der Aalst CM, de Jong PA, *et al*. Reduced lung-cancer mortality with volume CT screening in a randomized trial. *N Engl J Med* 2020;382:503-13.
- 5 Field JK, Duffy SW, Baldwin DR, *et al*. The UK lung cancer screening trial: a pilot randomised controlled trial of low-dose computed tomography screening for the early detection of lung cancer. *Health Technol Assess* 2016;20:1-146.
- 6 Wille MMW, Dirksen A, Ashraf H, *et al*. Results of the randomized Danish lung cancer screening trial with focus on high-risk profiling. *Am J Respir Crit Care Med* 2016;193:542-51.
- 7 Docherty A, Harrison E, Green C, *et al*. Features of 16,749 hospitalised UK patients with COVID-19 using the ISARIC WHO clinical characterisation protocol. *Infectious Diseases (except HIV/AIDS)* [Preprint].
- 8 O'Dowd EL, Lee RW, Akram AR, *et al*. Defining the road map to a UK national lung cancer screening programme. *Lancet Oncol* 2023;24:e207-18.
- 9 NCRAS. English routes to diagnosis 2006-2016. Routes to Diagnosis; 2018. Available: http://www.ncin.org.uk/publications/routes_to_diagnosis
- 10 NICE. Referral guidelines for suspected cancer. London, 2005.
- 11 Richards M, Thorlby R, Fisher R, *et al*. Unfinished business: an assessment of the National approach to improving cancer services in England 1995-2015, London, 2018. Available: <https://www.health.org.uk/publications/unfinished-business>
- 12 Del Giudice ME, Young S-M, Vella ET, *et al*. Guideline for referral of patients with suspected lung cancer by family physicians and other primary care providers. *Can Fam Physician* 2014;60:711-6.
- 13 Dyrop HB, Safwat A, Vedsted P, *et al*. Cancer patient pathways shortens waiting times and accelerates the diagnostic process of suspected sarcoma patients in Denmark. *Health Policy* 2013;113:110-7.
- 14 Okoli GN, Kostopoulou O, Delaney BC. Is symptom-based diagnosis of lung cancer possible? A systematic review and meta-analysis of symptomatic lung cancer prior to diagnosis for comparison with real-time data from routine general practice. *PLoS One* 2018;13:e0207686.

- 15 Hamilton W, Peters TJ, Round A, *et al.* What are the clinical features of lung cancer before the diagnosis is made? A population based case-control study. *Thorax* 2005;60:1059–65.
- 16 Wiering B, Lyratzopoulos G, Hamilton W, *et al.* Concordance with urgent referral guidelines in patients presenting with any of six 'alarm' features of possible cancer: a retrospective cohort study using linked primary care records. *BMJ Qual Saf* 2022;31:579–89.
- 17 Singh H, Bradford A, Goeschel C. Operational measurement of diagnostic safety: state of the science. *Diagnosis* 2021;8:51–65.
- 18 Moore SF, Price SJ, Chowienzyk S, *et al.* The impact of changing risk thresholds on the number of people in England eligible for urgent investigation for possible cancer: an observational cross-sectional study. *Br J Cancer* 2021;125:1593–7.
- 19 Watson J, Nicholson BD, Hamilton W, *et al.* Identifying clinical features in primary care electronic health record studies: methods for Codelist development. *BMJ Open* 2017;7:e019637.
- 20 Pearson C, Fraser J, Peake M, *et al.* Establishing population-based surveillance of diagnostic timeliness using linked cancer Registry and administrative data for patients with colorectal and lung cancer. *Cancer Epidemiol* 2019;61:111–8.
- 21 Booth HP, Prevost AT, Gulliford MC. Validity of smoking prevalence estimates from primary care electronic health records compared with national population survey data for England, 2007 to 2011. *Pharmacoepidemiol Drug Saf* 2013;22:1357–61.
- 22 OpenSAFELY. Codelists. 2021. Available: doi:<https://codelists.opensafely.org/>
- 23 CALIBER. Codelists. 2021. Available: <https://www.caliberresearch.org/portal/codelists>
- 24 Arana A, Margulis AV, Varas-Lorenzo C, *et al.* Validation of cardiovascular outcomes and risk factors in the clinical practice research Datalink in the United Kingdom. *Pharmacoepidemiol Drug Saf* 2021;30:237–47. 10.1002/pds.5150 Available: <https://onlinelibrary.wiley.com/doi/10.1099/1557/30/2>
- 25 Marston L, Carpenter JR, Walters KR, *et al.* Smoker, ex-smoker or non-smoker? the validity of routinely recorded smoking status in UK primary care: a cross-sectional study. *BMJ Open* 2014;4:e004958.
- 26 Maringe C, Fowler H, Rachet B, *et al.* Reproducibility, Reliability and validity of population-based administrative health data for the assessment of cancer non-related Comorbidities. *PLoS One* 2017;12:e0172814.
- 27 Elliss-Brookes L, McPhail S, Ives A, *et al.* Routes to diagnosis for cancer – determining the patient journey using multiple routine data SETS. *Br J Cancer* 2012;107:1220–6.
- 28 Weller D, Vedsted P, Rubin G, *et al.* The Aarhus statement: improving design and reporting of studies on early cancer diagnosis. *Br J Cancer* 2012;106:1262–7.
- 29 Singh H, Hirani K, Kadiyala H, *et al.* Characteristics and predictors of missed opportunities in lung cancer diagnosis: an electronic health record-based study. *J Clin Oncol* 2010;28:3307–15.
- 30 Arendse KD, Walter FM, Pilling M, *et al.* Time from presentation to pre-diagnostic chest X-ray in patients with symptomatic lung cancer: a cohort study using electronic patient records from English primary care. *Br J Gen Pract* 2021;71:e273–9.
- 31 Walter FM, Rubin G, Bankhead C, *et al.* Symptoms and other factors associated with time to diagnosis and stage of lung cancer: a prospective cohort study. *Br J Cancer* 2015;112 Suppl 1(Suppl 1):S6–13.
- 32 Bradley SH, Bhartia BS, Callister ME, *et al.* Chest X-ray sensitivity and lung cancer outcomes: A retrospective observational study. *Br J Gen Pract* 2021;71:e862–8.
- 33 Tørring ML, Frydenberg M, Hansen RP, *et al.* Time to diagnosis and mortality in colorectal cancer: a cohort study in primary care. *Br J Cancer* 2011;104:934–40.
- 34 NHS. Diagnostic imaging Dataset. In: *Stat. Work areas*. 2021. Available: <https://www.england.nhs.uk/statistics/statistical-work-areas/diagnostic-imaging-dataset/>
- 35 Henson KE, Elliss-Brookes L, Coupland VH, *et al.* Data resource profile: National cancer registration Dataset in England. *Int J Epidemiol* 2020;49:16–16h.
- 36 Price SJ, Stapley SA, Shephard E, *et al.* Is omission of free text records a possible source of data loss and bias in clinical practice research Datalink studies? A case-control study. *BMJ Open* 2016;6:e011664.
- 37 Renzi C, Kaushal A, Emery J, *et al.* Comorbid chronic diseases and cancer diagnosis: disease-specific effects and underlying mechanisms. *Nat Rev Clin Oncol* 2019;16:746–61.
- 38 Payne NWS, Brown KF, Delon C, *et al.* Socio-economic deprivation and cancer incidence in England: Quantifying the role of smoking. *PLoS One* 2022;17:e0272202.
- 39 Cheraghi-Sohi S, Holland F, Singh H, *et al.* Incidence, origins and Avoidable harm of missed opportunities in diagnosis: longitudinal patient record review in 21 English general practices. *BMJ Qual Saf* 2021;30:977–85.
- 40 Singh H, Sittig DF. Advancing the science of measurement of diagnostic errors in Healthcare: the safer DX framework. *BMJ Qual Saf* 2015;24:103–10.
- 41 Abel G, Saunders CL, Mendonca SC, *et al.* Variation and statistical reliability of publicly reported primary care diagnostic activity indicators for cancer: a cross-sectional ecological study of routine data. *BMJ Qual Saf* 2018;27:21–30.
- 42 Bradley SH, Abraham S, Callister ME, *et al.* Sensitivity of chest X-ray for detecting lung cancer in people presenting with symptoms: a systematic review. *Br J Gen Pract* 2019;69:e827–35.
- 43 Cancer Research UK. Horizon scanning: an evaluation of imaging capacity across the NHS in England. 2015. Available: <https://www.cancerresearchuk.org/about-us/we-develop-policy/our-policy-on-early-diagnosis/our-policy-on-diagnostic-services/our-policy-on-imaging-capacity>
- 44 Department of Health and Social Care. 40 community diagnostic centres launching across England. Press release, 2021. Available: <https://www.gov.uk/government/news/40-community-diagnostic-centres-launching-across-england>

Koo et al., supplementary material

Supplementary material for: **Guideline concordance for timely chest imaging after new presentations of dyspnoea or haemoptysis in primary care: a retrospective cohort study**

Appendix 1: sample derivation

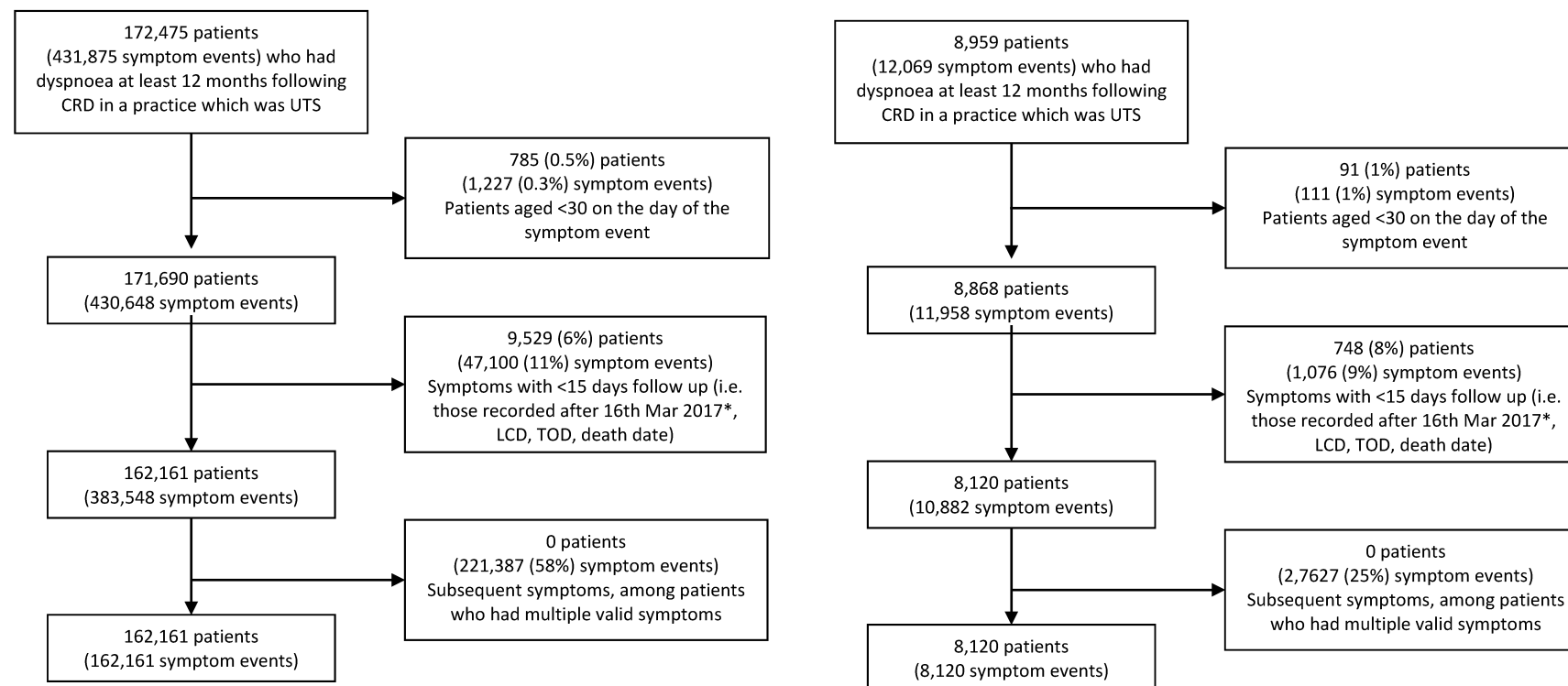
In CPRD, symptom information is available in clinical files (which are typically used to capture clinical features and details during consultations), and referral files (which are typically used to capture information relating to referrals made from primary care). Symptoms recorded in both types of files were considered to identify all symptom records of interest. The symptom code lists are published as part of the following research article:

Moore SF, Price SJ, Chowienczyk S, Bostock J, Hamilton W (2021) The impact of changing risk thresholds on the number of people in England eligible for urgent investigation for possible cancer: an observational cross-sectional study. *Br J Cancer* 125:1593–7. doi:10.1038/s41416-021-01541-4

Please see the figures A1.1 and A1.2 below for sample derivation.

Koo et al., supplementary material

Figures A1.1 and A1.2: Sample derivation for dyspnoea (left) and haemoptysis (right)



*Symptoms recorded on or after 16 Mar 2017 were excluded as 31 March 2017 was the last reliable date in our segment of DID data, and we would be unable to confirm outcome status for these individuals

CRD: current registration date

LCD: last collection date (before a practice leaves CPRD)

TOD: transfer out date (when a patient leaves a practice)

UTS: up to standard (CPRD's practice level measure of data quality)

Koo et al., supplementary material

Appendix 2 DID variables used to define the outcome

The three criteria (imaging modality and body region; source of referral; time from symptomatic presentation) used to define a guideline-concordant imaging event are expanded below indicating the variables used to apply the definition.

1. Tests conducted in a relevant part of the body with a relevant modality

NICIP/SNOMEDCT code lists published previously by Pearson et al 2019 were used to identify lung cancer-specific imaging. The full reference is below:

Pearson C, Fraser J, Peake M, Valori R, Poirier V, Coupland VH, Hiom S, McPhail S, Moffat J, Lyratzopoulos G, Shelton J (2019) Establishing population-based surveillance of diagnostic timeliness using linked cancer registry and administrative data for patients with colorectal and lung cancer. *Cancer Epidemiol* 61: 111–118, doi:10.1016/j.canep.2019.05.010

2. Tests that were ordered by the GP / from primary care

This was identified using two variables:

DID variable name	Variable description	Included value	Value description
ic_reftype_desc	Referrer type	4	GP direct access
did_patsource_code	Referral source	"GP"	GP [string variable]

3. Tests conducted 0-14 days from symptomatic presentation

The time from presentation to imaging was calculated using two date variables:

1. Symptom event date [from CPRD]
2. DID Diagnostic Test Date (variable name: did_date3): the date that test took place. This variable is mandatory to complete for providers.

Koo et al., supplementary material

Appendix 3 Imaging conducted within 4 weeks of symptomatic presentation

The main analysis was repeated with a broader definition of guideline-concordant care, namely lung imaging ordered by primary care that took place within 4 weeks of symptomatic presentation (instead of 2 weeks).

Table A3.1 Receipt of primary care ordered chest imaging within 4 weeks of presentation among the dyspnoea cohort (n=162,161)

DYSPNOEA	Total	Guideline-concordant imaging N (%)	Crude OR (95% CI)	Adjusted OR (95% CI)*	Adjusted OR (95% CI)**
Total	162161	26127 (16%)	-	-	-
Sex			<0.001	<0.001	<0.001
Men	75683	12489 (17%)	Ref	Ref	Ref
Women	86478	13638 (16%)	0.95 (0.92–0.97)	0.94 (0.91–0.96)	0.94 (0.91–0.97)
Age group			<0.001	<0.001	<0.001
30-39 years	9549	1062 (11%)	0.65 (0.60–0.70)	0.55 (0.51–0.59)	0.55 (0.51–0.59)
40-49 years	16602	2561 (15%)	0.95 (0.90–1.00)	0.86 (0.82–0.91)	0.87 (0.82–0.92)
50-59 years	24772	4000 (16%)	Ref	Ref	Ref
60-69 years	38835	6338 (16%)	1.01 (0.97–1.06)	1.08 (1.03–1.13)	1.08 (1.03–1.13)
70-79 years	40491	6984 (17%)	1.08 (1.04–1.13)	1.11 (1.07–1.17)	1.10 (1.06–1.15)
80+ years	31912	5182 (16%)	1.01 (0.96–1.05)	0.92 (0.88–0.97)	0.91 (0.87–0.96)
Ethnicity			<0.001	<0.001	<0.001
White	143728	23527 (16%)	Ref	Ref	Ref
Non-white	7822	1311 (17%)	1.03 (0.97–1.09)	0.96 (0.90–1.02)	0.96 (0.90–1.02)
Missing	10611	1289 (12%)	0.71 (0.67–0.75)	0.67 (0.63–0.71)	0.67 (0.63–0.71)
IMD quintile			<0.001	0.002	0.002
1 (least)	32621	5756 (18%)	Ref	Ref	Ref
2	33848	5469 (16%)	0.90 (0.86–0.94)	0.94 (0.90–0.98)	0.94 (0.90–0.98)
3	33628	5612 (17%)	0.93 (0.90–0.97)	0.99 (0.95–1.03)	0.99 (0.95–1.04)
4	31480	4844 (15%)	0.85 (0.81–0.89)	0.95 (0.91–0.99)	0.95 (0.91–0.99)
5 (most)	30514	4431 (15%)	0.79 (0.76–0.83)	0.94 (0.90–0.98)	0.94 (0.90–0.98)
Smoking status			<0.001	<0.001	<0.001
Non-smoker	34576	6653 (19%)	Ref	Ref	Ref
Ex-smoker	69667	10961 (16%)	0.78 (0.76–0.81)	0.94 (0.91–0.98)	0.94 (0.91–0.97)
Current smoker	57559	8460 (15%)	0.72 (0.70–0.75)	0.89 (0.86–0.92)	0.88 (0.85–0.92)
Missing	359	53 (15%)	0.73 (0.54–0.97)	0.64 (0.48–0.87)	0.64 (0.47–0.86)
Morbidities†			<0.001	<0.001	<0.001
No COPD/Asthma or HF	86129	20123 (23%)	Ref	Ref	Ref
HF only	3417	557 (16%)	0.64 (0.58–0.70)	0.58 (0.53–0.64)	0.59 (0.53–0.64)
COPD/Asthma only	70008	5262 (8%)	0.27 (0.26–0.28)	0.25 (0.24–0.26)	0.25 (0.24–0.26)
COPD/Asthma & HF	2607	185 (7%)	0.25 (0.22–0.29)	0.22 (0.19–0.26)	0.22 (0.19–0.26)
Imaging in the 6 weeks prior to presentation			<0.001	<0.001	<0.001
No prior imaging	153538	25654 (17%)	Ref	Ref	Ref
Prior imaging	8623	473 (5%)	0.29 (0.26–0.32)	0.22 (0.20–0.25)	0.22 (0.20–0.24)
Cancer diagnosis in the year following symptomatic presentation			<0.001	<0.001	<0.001
No cancer	158575	25297 (16%)	Ref	-	Ref
Lung cancer	1103	291 (26%)	1.89 (1.65–2.16)	-	2.13 (1.84–2.45)
Other cancer	2483	539 (22%)	1.46 (1.33–1.61)	-	1.33 (1.21–1.47)

Joint testing p-values are presented in italics.

COPD = chronic obstructive pulmonary disease; HF = heart failure; IMD = Index of Multiple Deprivation

Koo et al., supplementary material

*adjusted for sex, age, ethnicity, IMD quintile, smoking status, morbidities

**adjusted for sex, age, ethnicity, IMD quintile, smoking status, morbidities, cancer diagnosis

†Recorded in the 78 months to 6 months prior to symptomatic presentation

Table A3.2 Receipt of primary care ordered chest imaging within 4 weeks of presentation among the haemoptysis cohort (n=8,120)

HAEMOPTYSIS	Total	Guideline-concordant imaging N (%)	Crude OR (95% CI)	Adjusted OR (95% CI)*	Adjusted OR (95% CI)**
Total	8120	4234 (52%)			
Sex			<i>0.020</i>	<i>0.001</i>	<i>0.001</i>
Men	4728	2517 (53%)	Ref	Ref	Ref
Women	3392	1717 (51%)	0.90 (0.82–0.98)	0.86 (0.78–0.94)	0.86 (0.78–0.94)
Age group			<i><0.001</i>	<i><0.001</i>	<i><0.001</i>
30-39 years	904	389 (43%)	0.68 (0.58–0.80)	0.64 (0.54–0.76)	0.65 (0.55–0.77)
40-49 years	1218	602 (49%)	0.88 (0.76–1.02)	0.85 (0.73–<1.00)	0.86 (0.73–>1.00)
50-59 years	1477	777 (53%)	Ref	Ref	Ref
60-69 years	1768	1029 (58%)	1.25 (1.09–1.44)	1.31 (1.13–1.51)	1.30 (1.12–1.50)
70-79 years	1646	901 (55%)	1.09 (0.95–1.25)	1.17 (1.01–1.36)	1.16 (>1.00–1.35)
80+ years	1107	536 (48%)	0.85 (0.72–0.99)	0.89 (0.75–1.05)	0.87 (0.74–1.03)
Ethnicity			<i><0.001</i>	<i><0.001</i>	<i><0.001</i>
White	6857	3622 (53%)	Ref	Ref	Ref
Non-white	746	388 (52%)	0.97 (0.83–1.13)	1.02 (0.86–1.20)	1.02 (0.87–1.20)
Missing	517	224 (43%)	0.68 (0.57–0.82)	0.66 (0.55–0.80)	0.67 (0.55–0.81)
IMD quintile			<i>0.518</i>	<i>0.217</i>	<i>0.248</i>
1 (least)	1592	829 (52%)	Ref	Ref	Ref
2	1614	829 (51%)	0.97 (0.85–1.12)	0.97 (0.84–1.12)	0.97 (0.84–1.12)
3	1704	895 (53%)	1.02 (0.89–1.17)	1.02 (0.88–1.17)	1.01 (0.88–1.17)
4	1619	825 (51%)	0.96 (0.83–1.10)	0.94 (0.81–1.08)	0.93 (0.81–1.08)
5 (most)	1588	855 (54%)	1.07 (0.93–1.23)	1.10 (0.95–1.28)	1.10 (0.95–1.27)
Smoking status			<i>0.766</i>	<i>0.241</i>	<i>0.227</i>
Non-smoker	1955	1013 (52%)	Ref	Ref	Ref
Ex-smoker	3121	1616 (52%)	1.00 (0.89–1.12)	0.93 (0.82–1.05)	0.92 (0.82–1.05)
Current smoker	3024	1596 (53%)	1.04 (0.93–1.16)	1.03 (0.91–1.16)	1.02 (0.91–1.16)
Missing	20	9 (45%)	0.76 (0.31–1.84)	0.66 (0.27–1.63)	0.67 (0.27–1.64)
Morbidities†			0.246	0.071	0.071
No COPD/Asthma or HF	5596	2947 (53%)	Ref	Ref	Ref
HF only	144	82 (57%)	1.19 (0.85–1.66)	1.08 (0.76–1.53)	1.09 (0.77–1.54)
COPD/Asthma only	2281	1154 (51%)	0.92 (0.83–1.01)	0.88 (0.79–0.97)	0.88 (0.79–0.97)
COPD/Asthma & HF	99	51 (52%)	0.96 (0.64–1.42)	0.84 (0.56–1.27)	0.85 (0.56–1.28)
Imaging in the 6 weeks prior to presentation			<i>0.036</i>	<i><0.001</i>	<i><0.001</i>
No prior imaging	7567	4170 (55%)	Ref	Ref	Ref
Prior imaging	553	64 (12%)	0.11 (0.08–0.14)	0.10 (0.08–0.13)	0.10 (0.08–0.13)
Cancer diagnosis in the year following symptomatic presentation			<i>0.065</i>		<i>0.047</i>
No cancer	7742	4017 (52%)	Ref		Ref
Lung cancer	253	150 (59%)	1.35 (1.05–1.74)		1.41 (1.07–1.85)
Other cancer	125	67 (54%)	1.07 (0.75–1.53)		1.08 (0.74–1.57)

Joint testing p-values are presented in italics.

COPD = chronic obstructive pulmonary disease; HF = heart failure; IMD = Index of Multiple Deprivation

*Adjusting for sex, age, ethnicity, IMD quintile, smoking status, morbidities, prior imaging

**Adjusting for sex, age, ethnicity, IMD quintile, smoking status, morbidities, prior imaging, cancer diagnosis

†Recorded in the 78 months to 6 months prior to symptomatic presentation

Koo et al., supplementary material

Appendix 4 Imaging ordered by any source

The main analysis was repeated with a broader definition of guideline-concordant care, namely lung imaging ordered by any source that was conducted within 2 weeks of symptomatic presentation (instead of looking at solely primary care ordered chest imaging).

The Diagnostic Imaging Dataset has two variables that can be used to identify who ordered the imaging (`did_patsource_code` and `ic_reftype_desc`). The variable `did_patsource_code` describes “the type of department or organisation making the referral for imaging activity” while the variable `ic_reftype_desc` describes the “referrer type description” (see Table A8.1).

There was overlap between these two variables which made it challenging to identify Inpatient vs Outpatient vs Emergency vs GP. Instead, the definition of guideline-concordant care used in the main analysis (which included a condition that `did_patsource_code=GP direct access OR ic_reftype_desc=GP`) was modified so that all timely chest imaging was included, regardless of source.

Table A4.1 DID variables used to identify source of imaging

DID variable	Categories
<code>did_patsource_code</code>	1 Admitted Patient Care – Inpatient (this healthcare provider) 2 admitted patient care – Day case (this healthcare provider) 3 Outpatient (this healthcare provider) 4 GP direct access 5 Accident & Emergency department (this healthcare provider) 6 Other healthcare provider 7 Other 99 Unknown
<code>ic_reftype_desc</code>	GP Consultant Nurse Physio Other health professional Not known

Koo et al., supplementary material

Table A4.2 Receipt of chest imaging (any source) within 2 weeks of presentation among the dyspnoea cohort (n=162,161)

DYSPNOEA	Total	Guideline-concordant imaging N (%)	Crude OR (95% CI)	Adjusted OR (95% CI)*	Adjusted OR (95% CI)**
Total	162161	34154 (21%)			
Sex			<i>0.001</i>	<i><0.001</i>	<i><0.001</i>
Men	75683	16214 (21%)	Ref	Ref	Ref
Women	86478	17940 (21%)	0.96 (0.94–0.98)	0.93 (0.91–0.96)	0.94 (0.91–0.96)
Age group			<i><0.001</i>	<i><0.001</i>	<i><0.001</i>
30-39 years	9549	1585 (17%)	0.81 (0.76–0.87)	0.70 (0.66–0.75)	0.70 (0.66–0.75)
40-49 years	16602	3206 (19%)	0.98 (0.93–1.03)	0.90 (0.85–0.95)	0.90 (0.86–0.95)
50-59 years	24772	4870 (20%)	Ref	Ref	Ref
60-69 years	38835	7705 (20%)	1.01 (0.97–1.05)	1.07 (1.03–1.12)	1.06 (1.02–1.11)
70-79 years	40491	8967 (22%)	1.16 (1.12–1.21)	1.18 (1.14–1.23)	1.16 (1.12–1.21)
80+ years	31912	7821 (25%)	1.33 (1.27–1.38)	1.20 (1.15–1.25)	1.18 (1.13–1.23)
Ethnicity			<i><0.001</i>	<i><0.001</i>	<i><0.001</i>
White	143724	31131 (22%)	Ref	Ref	Ref
Non-white	7823	1714 (22%)	1.01 (0.96–1.07)	0.95 (0.89–1.00)	0.95 (0.90–1.01)
Missing	10614	1309 (12%)	0.51 (0.48–0.54)	0.49 (0.46–0.52)	0.50 (0.47–0.53)
IMD quintile			<i><0.001</i>	<i>0.001</i>	<i>0.001</i>
1 (least)	32621	7446 (23%)	Ref	Ref	Ref
2	33848	7184 (21%)	0.91 (0.88–0.94)	0.95 (0.91–0.99)	0.95 (0.91–0.99)
3	33628	7386 (22%)	0.95 (0.92–0.99)	1.01 (0.97–1.05)	1.01 (0.97–1.05)
4	31480	6319 (20%)	0.85 (0.82–0.88)	0.96 (0.92–0.99)	0.96 (0.92–0.99)
5 (most)	30514	5803 (19%)	0.79 (0.76–0.83)	0.95 (0.91–0.99)	0.94 (0.91–0.98)
Smoking status			<i><0.001</i>	<i><0.001</i>	<i><0.001</i>
Non-smoker	34576	8770 (25%)	Ref	Ref	Ref
Ex-smoker	69667	14175 (20%)	0.75 (0.73–0.77)	0.89 (0.86–0.92)	0.88 (0.86–0.91)
Current smoker	57559	11120 (19%)	0.70 (0.68–0.73)	0.88 (0.85–0.91)	0.87 (0.84–0.90)
Missing	359	89 (25%)	0.97 (0.76–1.23)	0.86 (0.67–1.10)	0.85 (0.66–1.08)
Morbidities†			<i><0.001</i>	<i><0.001</i>	<i><0.001</i>
No COPD/Asthma or HF	86129	25473 (30%)	Ref	Ref	Ref
HF only	3417	1019 (30%)	1.01 (0.94–1.09)	0.87 (0.80–0.93)	0.87 (0.81–0.94)
COPD/Asthma only	70008	7305 (10%)	0.28 (0.27–0.29)	0.27 (0.26–0.27)	0.27 (0.26–0.27)
COPD/Asthma & HF	2607	357 (14%)	0.38 (0.34–0.42)	0.33 (0.29–0.37)	0.33 (0.29–0.37)
Imaging in the 6 weeks prior to presentation			<i><0.001</i>	<i><0.001</i>	<i><0.001</i>
No prior imaging	153538	33124 (22%)	Ref	Ref	Ref
Prior imaging	8623	1030 (12%)	0.49 (0.46–0.53)	0.39 (0.37–0.42)	0.39 (0.36–0.41)
Cancer diagnosis in the year following symptomatic presentation			<i><0.001</i>	<i><0.001</i>	<i><0.001</i>
No cancer	158575	32886 (21%)	Ref		Ref
Lung cancer	1103	453 (41%)	2.66 (2.36–3.00)		3.02 (2.66–3.43)
Other cancer	2483	815 (33%)	1.87 (1.72–2.03)		1.68 (1.54–1.84)

Joint testing p-values are presented in italics.

COPD = chronic obstructive pulmonary disease; HF = heart failure; IMD = Index of Multiple Deprivation

*Adjusting for sex, age, ethnicity, IMD quintile, smoking status, morbidities, prior imaging

**Adjusting for sex, age, ethnicity, IMD quintile, smoking status, morbidities, prior imaging, cancer diagnosis

†Recorded in the 78 months to 6 months prior to symptomatic presentation

Koo et al., supplementary material

Table A4.3 Receipt of chest imaging (any source) within 2 weeks of presentation among the haemoptysis cohort (n=8,120)

HAEMOPTYSIS	Total	Guideline-concordant imaging N (%)	Crude OR (95% CI)	Adjusted OR (95% CI)*	Adjusted OR (95% CI)**
Total	8120	5039 (62%)			
Sex			<i>0.026</i>	<i>0.004</i>	<i>0.004</i>
Men	4728	2982 (63%)	Ref	Ref	Ref
Women	3392	2057 (61%)	0.90 (0.82–0.99)	0.87 (0.79–0.96)	0.87 (0.79–0.96)
Age group			<i><0.001</i>	<i><0.001</i>	<i><0.001</i>
30-39 years	904	463 (51%)	0.59 (0.50–0.70)	0.59 (0.50–0.70)	0.60 (0.50–0.71)
40-49 years	1218	663 (54%)	0.67 (0.58–0.79)	0.66 (0.56–0.77)	0.66 (0.57–0.78)
50-59 years	1477	944 (64%)	Ref	Ref	Ref
60-69 years	1768	1170 (66%)	1.10 (0.96–1.28)	1.09 (0.94–1.27)	1.08 (0.93–1.25)
70-79 years	1646	1096 (67%)	1.13 (0.97–1.30)	1.12 (0.96–1.31)	1.10 (0.94–1.29)
80+ years	1107	703 (64%)	0.98 (0.84–1.16)	0.97 (0.82–1.15)	0.95 (0.80–1.12)
Ethnicity			<i><0.001</i>	<i><0.001</i>	<i><0.001</i>
White	6859	4369 (64%)	Ref	Ref	Ref
Non-white	745	437 (59%)	0.81 (0.69–0.94)	0.92 (0.79–1.09)	0.93 (0.79–1.10)
Missing	516	233 (45%)	0.47 (0.39–0.56)	0.50 (0.42–0.60)	0.51 (0.42–0.61)
IMD quintile			<i>0.019</i>	<i>0.004</i>	<i>0.006</i>
1 (least)	1592	984 (62%)	Ref	Ref	Ref
2	1614	991 (61%)	0.98 (0.85–1.13)	0.97 (0.84–1.13)	0.97 (0.84–1.13)
3	1704	1079 (63%)	1.07 (0.93–1.23)	1.07 (0.93–1.24)	1.07 (0.92–1.23)
4	1619	957 (59%)	0.89 (0.78–1.03)	0.88 (0.76–1.02)	0.87 (0.75–1.01)
5 (most)	1588	1026 (65%)	1.13 (0.98–1.30)	1.16 (0.99–1.34)	1.14 (0.98–1.33)
Smoking status			<i><0.001</i>	<i>0.003</i>	<i>0.006</i>
Non-smoker	1955	1130 (58%)	Ref	Ref	Ref
Ex-smoker	3121	1991 (64%)	1.29 (1.15–1.44)	1.14 (>1.00–1.29)	1.12 (0.99–1.27)
Current smoker	3024	1909 (63%)	1.25 (1.11–1.40)	1.23 (1.09–1.39)	1.21 (1.07–1.37)
Missing	20	9 (45%)	0.60 (0.25–1.45)	0.50 (0.20–1.23)	0.51 (0.20–1.25)
Morbidities†			<i>0.144</i>	<i>0.685</i>	<i>0.674</i>
No COPD/Asthma or HF	5596	3439 (61%)	Ref	Ref	Ref
HF only	144	100 (69%)	1.43 (<1.00–2.04)	1.15 (0.80–1.66)	1.16 (0.80–1.68)
COPD/Asthma only	2281	1435 (63%)	1.06 (0.96–1.18)	0.95 (0.86–1.06)	0.95 (0.86–1.06)
COPD/Asthma & HF	99	65 (66%)	1.20 (0.79–1.82)	0.94 (0.61–1.44)	0.96 (0.62–1.47)
Imaging in the 6 weeks prior to presentation			<i><0.001</i>	<i><0.001</i>	<i><0.001</i>
No prior imaging	7567	4836 (64%)	Ref	Ref	Ref
Prior imaging	553	203 (37%)	0.33 (0.27–0.39)	0.30 (0.25–0.35)	0.29 (0.24–0.35)
Cancer diagnosis in the year following symptomatic presentation			<i><0.001</i>		<i><0.001</i>
No cancer	7742	4757 (61%)	Ref		Ref
Lung cancer	253	195 (77%)	2.11 (1.57–2.84)		1.92 (1.41–2.60)
Other cancer	125	87 (70%)	1.44 (0.98–2.11)		1.31 (0.88–1.95)

Joint testing p-values are presented in italics.

COPD = chronic obstructive pulmonary disease; HF = heart failure; IMD = Index of Multiple Deprivation

*Adjusting for sex, age, ethnicity, IMD quintile, smoking status, morbidities, prior imaging

**Adjusting for sex, age, ethnicity, IMD quintile, smoking status, morbidities, prior imaging, cancer diagnosis

†Recorded in the 78 months to 6 months prior to symptomatic presentation