



OPEN ACCESS

EDITED BY

Francisco Navarrete Rueda,
Miguel Hernández University of Elche,
Spain

REVIEWED BY

Heather Bradshaw,
Indiana University Bloomington,
United States
Jong Bong Lee,
Novartis, United States
Ana Isabel Fraguas,
Complutense University, Spain

*CORRESPONDENCE

Barry Setlow,
✉ setlow@ufl.edu

RECEIVED 22 May 2023

ACCEPTED 08 August 2023

PUBLISHED 28 August 2023

CITATION

Gazarov EA, Zequeira S, Senetra AS,
Howard J, Sharma A, McCurdy CR,
Lewis J, Bizon JL and Setlow B (2023),
Pharmacokinetics of delta-9-
tetrahydrocannabinol following acute
cannabis smoke exposure in mice; effects
of sex, age, and strain.
Front. Pharmacol. 14:1227220.
doi: 10.3389/fphar.2023.1227220

COPYRIGHT

© 2023 Gazarov, Zequeira, Senetra,
Howard, Sharma, McCurdy, Lewis, Bizon
and Setlow. This is an open-access article
distributed under the terms of the
[Creative Commons Attribution License
\(CC BY\)](https://creativecommons.org/licenses/by/4.0/). The use, distribution or
reproduction in other forums is
permitted, provided the original author(s)
and the copyright owner(s) are credited
and that the original publication in this
journal is cited, in accordance with
accepted academic practice. No use,
distribution or reproduction is permitted
which does not comply with these terms.

Pharmacokinetics of delta-9-tetrahydrocannabinol following acute cannabis smoke exposure in mice; effects of sex, age, and strain

Emely A. Gazarov^{1,2}, Sabrina Zequeira¹, Alexandria S. Senetra³,
John Howard¹, Abhishek Sharma^{3,4}, Christopher R. McCurdy^{3,4,5},
Jada Lewis¹, Jennifer L. Bizon^{1,2,4} and Barry Setlow^{1,2,4*}

¹Department of Neuroscience, University of Florida, Gainesville, FL, United States, ²Department of Psychiatry, University of Florida, Gainesville, FL, United States, ³Department of Pharmaceutics, University of Florida, Gainesville, FL, United States, ⁴Center for Addiction Research and Education, University of Florida, Gainesville, FL, United States, ⁵Department of Medicinal Chemistry, University of Florida, Gainesville, FL, United States

Increased use of cannabis and cannabinoids for recreational and medical purposes has led to a growth in research on their effects in animal models. The majority of this work has employed cannabinoid injections; however, smoking remains the most common route of cannabis consumption. To better model real-world cannabis use, we exposed mice to cannabis smoke to establish the pharmacokinetics of $\Delta 9$ THC and its metabolites in plasma and brain. To determine the time course of $\Delta 9$ THC and two major metabolites [11-hydroxy-delta-9-tetrahydrocannabinol (11-OH-THC) and 11-nor-9-carboxy-delta-9-tetrahydrocannabinol (11-COOH-THC)], male and female C57BL/6J mice were exposed to smoke from sequentially burning 5 cannabis cigarettes. Following smoke exposure, trunk blood and brains were collected at 6 time points (10–240 min). Plasma and brain homogenates were analyzed for $\Delta 9$ THC and metabolites using a validated ultraperformance liquid chromatography-tandem mass spectrometry method. To assess effects of age, sex, and mouse strain, we exposed mice of four strains (C57BL/6J, FVB, Swiss Webster, and 129S6/SvEv, aged 4–24 months) to cannabis using the same smoke regimen. Samples were collected 10 and 40 min following exposure. Lastly, to assess effects of dose, C57BL/6J mice were exposed to smoke from burning 3 or 5 cannabis cigarettes, with samples collected 40 min following exposure. The pharmacokinetic study revealed that maximum plasma $\Delta 9$ THC concentrations (C_{max}) were achieved at 10 and 40 min for males and females, respectively, while C_{max} for brain $\Delta 9$ THC was observed at 20 and 40 min for males and females, respectively. There were no age or strain differences in plasma $\Delta 9$ THC concentrations at 10 or 40 min; however, 129S6/SvEv mice had significantly higher brain $\Delta 9$ THC concentrations than FVB mice. Additionally, 3 cigarettes produced significantly lower plasma 11-COOH-THC concentrations compared to 5 cigarettes, although dose differences were not evident in plasma or brain concentrations of $\Delta 9$ THC or 11-OH-THC. Across all experiments, females had higher levels of 11-COOH-THC in plasma compared to males. The results reveal robust sex differences in $\Delta 9$ THC pharmacokinetics, and lay the groundwork for future studies using mice to model the pharmacodynamics of smoked cannabis.

KEYWORDS

pharmacokinetics, cannabis, Δ 9THC, 11-COOH- Δ 9THC, smoke

1 Introduction

Cannabis is the most widely used illicit drug in the United States, with 18.7% of the population aged 12 or older reporting past year use (Key Substance Use and Mental Health Indicators in the United States: Results from the 2021 National Survey on Drug Use and Health, U.S. Department of Health and Human Services, 2021). With changing attitudes toward cannabis and increasing access to medicinal and recreational markets, there is a critical need for scientific literature to assess the effects of cannabis on human health to inform medical decisions and legal policy making (Hutchison et al., 2019). The increasing accessibility and use of cannabis have also generated interest in understanding its potential therapeutic properties, particularly within the aging population. Various formulations of medical cannabis and cannabis products are currently indicated for the treatment of chronic pain, nausea and vomiting in cancer patients, epilepsy and seizures, and post-traumatic stress disorder (Belendiuk et al., 2015). Additionally, the polypharmaceutical properties of cannabis are of interest for treatment of age-related neurodegenerative conditions such as Alzheimer's disease, as some evidence suggests that cannabis possesses anti-inflammatory and antioxidant properties (Iuvone et al., 2004; Walter and Stella, 2004; Martín-Moreno et al., 2011; Martín-Moreno et al., 2012). Cannabis-based medications, such as Sativex[®] and Epidiolex[®], are already approved for treatment of spasticity in multiple sclerosis patients and epilepsy (Russo, 2018), which encourages further exploration of the effects of cannabis on neurological diseases. With over 90% of genes linked to human diseases also present in the mouse genome (Chinwalla et al., 2002), mice offer a viable option for studying the effects of cannabis and cannabinoids on both general health and specific diseases with translational value to humans. Ease in breeding, relatively short life spans, and the ability to generate transgenic lines also make mice a practical model for studying pharmacological treatments for a variety of disease conditions. When conducting such studies, however, it is important to consider variations in genetic background among mouse strains, as they can have considerable behavioral and physiological differences that alter drug pharmacokinetics. Strain differences in respiratory and cardiac functioning (Reinhard et al., 2002; Campen et al., 2005; Ward et al., 2007; Barnabei et al., 2010), as well as in behaviors such as locomotor activity (Bothe et al., 2004), can all contribute to variability in drug absorption, distribution, and metabolism. Thus, it is important to consider such potential differences in studies of drug pharmacokinetics, particularly in mouse models of disease conditions that may utilize only one or a few background strains.

Inhalation, particularly via smoking, remains the most common route of cannabis use (Knapp et al., 2019; Azcarate et al., 2020). Previous studies have assessed the pharmacokinetic profiles of both injected and inhaled cannabis/cannabinoids in rats by measuring plasma and brain concentrations of Δ 9THC (the primary psychoactive component in cannabis) and its two major metabolites, 11-hydroxy- Δ 9THC (11-OH-THC) and 11-nor-9-

carboxy- Δ 9THC (11-COOH-THC) (Hložek et al., 2017; Ruiz et al., 2021a; Ruiz et al., 2021b; Baglot et al., 2021). In mice, however, plasma and brain concentrations of these three analytes have only been thoroughly assessed following injected Δ 9THC (Torrens et al., 2020). Inhalation and injections of Δ 9THC yield different pharmacokinetic profiles, with differences in distribution, total exposure, and metabolism (Baglot et al., 2021). Such metabolic differences are important to consider, as the primary metabolite of Δ 9THC, 11-OH-THC, is also psychoactive and just as potent as Δ 9THC, and the secondary metabolite, 11-COOH-THC, remains detectable for 3–7 days following drug intake (Grotenhermen, 2003; Sharma et al., 2012) and may possess anti-inflammatory properties (Ujváry and Grotenhermen, 2014). For those reasons, an increasing number of pharmacological studies of cannabis in rodent models are using an inhaled route of administration, which calls for a thorough assessment of the pharmacokinetic profile of inhaled cannabis in mice. Previous pharmacokinetic studies of inhaled cannabis in mice have been limited to only male mice and/or evaluation of plasma or brain cannabinoids at a limited number of timepoints (Lichtman et al., 2001; Wilson et al., 2006; Poklis et al., 2010; Fantauzzi et al., 2021).

To better characterize the pharmacokinetics of inhaled cannabis in mice, we used a passive cannabis smoke inhalation paradigm to determine how sex, age (young adult, middle-age, advanced age), strain (C57BL/6J, FVB, 129, SW) and dose affect plasma and brain levels of Δ 9THC and its metabolites, 11-OH-THC and 11-COOH-THC, across different post-exposure time points.

2 Materials and methods

2.1 Subjects

Experiment 1 used young adult (3 mo.) male ($n = 36$) and female ($n = 36$) C57BL/6J (B6) mice obtained from the University of Florida Animal Care Services in-house breeding colony (founder mice obtained from The Jackson Laboratories). Experiment 2 used young adult (4–7 mo., $n = 46$), middle aged (10–15 mo., $n = 37$), and aged (20–24 mo., $n = 7$) FVB (Charles River), Swiss Webster (SW) and 129S6/SvEv (Taconic), and C57BL/6J (Jackson Labs) mice. These were non-transgenic mice obtained from in-house transgenic breeding colonies, in keeping with the 3Rs of humane animal practices (Russell and Burch, 1959). These mice were maintained on their respective strain backgrounds for >5 generations. Experiment 3 used young adult (3 mo.) male ($n = 10$) and female ($n = 10$) mice obtained from the same source as Experiment 1. Demographics of the mice in each experiment are described in Table 1. The mice were housed single sex, 1–5 per cage, on a 12-h light/dark cycle (lights on at 0700) with vivarium temperature maintained at 25°C. All experiments took place during the light phase. Water and food (2918 Teklad global 18% protein diet) were provided *ad libitum*. All animal procedures were approved and performed in accordance with the University of Florida Institutional Animal Care and Use Committee and followed National Institutes of Health guidelines.

TABLE 1 Mouse demographics.

Experiment 1	(3 months)		
CB7BL/6J	<i>n</i> = 72 (36 M, 36 F)		
Experiment 2	Young Adult (4–7 months)	Middle Aged (10–15 months)	Aged (20+ months)
FVB	<i>n</i> = 9 (8 M, 1 F)	<i>n</i> = 20 (12 M**, 8 F)	
Swiss Webster (SW)	<i>n</i> = 14 (6 M*, 8 F)		
129	<i>n</i> = 11 (4 M, 7 F)		
C57BL/6J	<i>n</i> = 12 (6 M*, 6 F*)	<i>n</i> = 17 (10 M#, 7 F*)	<i>n</i> = 7 (2 M, 5 F)
Experiment 3	(3 months)		
C57BL/6J	<i>n</i> = 20 (10 M, 10 F)		

Each asterisk (*) represents a single mouse with plasma Δ 9THC concentrations outside ± 2 SDs from the group mean and removed from analyses.

Each hash mark (#) represents a single mouse with brain Δ 9THC concentrations outside ± 2 SDs from the group mean and removed from analyses.

2.2 Apparatus

A TE-10 automated cigarette smoking machine (Teague Enterprises, Davis, CA United States) was used to conduct smoke exposure sessions. During these sessions, mice remained in their home cages, which were placed into the exposure chamber of the smoking machine ($71 \times 61 \times 61$ cm³, up to 6 cages containing 1–5 mice each were placed into the exposure chamber simultaneously). Cannabis cigarettes were lit and puffed (35 cm³ puff volume, 1 puff per min, 2 s per puff) in the ignition chamber of the smoking machine, from which the smoke (both mainstream and sidestream) was pumped into the exposure chamber via a series of holes on one side of the chamber, and continuously vented out through a series of holes on the opposite side of the chamber and exhausted to the exterior of the building. Once the final cigarette was fully burnt, carbon monoxide (CO) and total suspended particulate matter (TSP) measurements were obtained. The maximum CO level in the exposure chamber (in ppm) was measured using a continuous CO monitor (Monoxor III, Bacharach, New Kensington, PA USA). For this measurement, air was pumped out of the exposure chamber and into the monitor for 2 minutes. TSP measurements were obtained by pumping air out of the exposure chamber and passing it through a pre-weighed filter (United Filtration Systems Inc, Sterling Heights, MI USA) for 2 minutes. To calculate the TSP (mg/cubic meter), the total weight gained by the filter was divided by the volume of airflow passing through the filter, which was measured by a dry gas meter. In Experiment 1, the average TSP level was 78 ± 12 mg/m³ and the CO level was 130 ± 27 ppm. In Experiment 2, the average TSP level was 89 ± 23 mg/m³ and the CO level was 101 ± 13 ppm. In Experiment 3, the 3-cigarette condition produced a TSP level of 125 mg/m³ and CO level of 201 ppm, and the 5-cigarette condition produced a TSP level of 175 mg/m³ and CO level of 209 ppm.

2.3 Experimental design

Mice were exposed to smoke generated from sequentially burning cannabis cigarettes (NIDA Drug Supply Program, approximately 700 mg each) containing 5.5%–6.2% THC (~40 mg THC per cigarette) and less than 0.01% CBD (Bruijnzeel et al., 2016; Bruijnzeel et al., 2019). In Experiment 1, mice were exposed to

smoke from sequentially burning 5 cannabis cigarettes in 1 h (approximately 12 min per cigarette), after which they were removed from the exposure chamber. Upon removal, mice of each sex were euthanized at 10, 20, 40, 60, 120, and 240 min time points post-smoke exposure (mice from different cages were used at each time point). In Experiment 2, mice followed the same smoke regimen as Experiment 1; however, they were euthanized only at 10 and 40 min time points post-smoke exposure (roughly the times of peak Δ 9THC and metabolite concentrations in plasma and brain) to evaluate strain and age differences in these measures. In Experiment 3, mice were exposed to smoke from burning either 3 cannabis cigarettes in 36 min or 5 cannabis cigarettes in 1 h, in order to determine cannabinoid levels following different durations (doses) of cannabis smoke exposure. Because cannabis cigarettes are a limited resource, the objective of this last experiment was to determine if smoking duration could be reduced without compromising Δ 9THC plasma and brain concentrations in future studies involving chronic smoke exposure. In Experiment 3, all mice were euthanized 40 min post-smoke exposure to allow for comparisons at a time point at which peak brain Δ 9THC concentrations are achieved and plasma Δ 9THC concentrations remain well within the detectable range.

2.4 Sample collection

Mice were euthanized via rapid decapitation at specific time points following smoke exposure, with 0 min defined as the time at which the cages were removed from the exposure chamber. Trunk blood was collected from each mouse using MicrovetteCB 300 LH 0.3 mL tubes (Sarstedt Inc, Newton, NC United States), which were temporarily stored on ice. Brains were harvested and flash frozen for 30 s by submerging them in 2-methylbutane chilled in a dry ice/ethanol bath, followed by placement in a sealed tube and temporary storage in dry ice. In Experiment 2, tail clippings were collected for genotyping and temporarily stored in ice. All blood samples were centrifuged for 15 min at 4°C at 6,500 rpm (~4,000 \times g) to separate plasma from blood. Plasma was pipetted from each sample and transferred to a polypropylene 0.6 mL microcentrifuge tube. All plasma and brain samples were stored at -80°C until analysis. Tail clippings were stored at -20°C until genotyping.

The mice obtained from internal transgenic breeding colonies used in Experiment 2 were genotyped both when weaned and when euthanized to confirm non-transgenic/wild-type status, based on the colony from which they were derived. Mice on the FVB background were genotyped for either the human tau transgene (Santacruz et al., 2005) by Transnetyx or internally by PCR for the human matrin transgene (Moloney et al., 2018). Mice on the 129 background were genotyped by Transnetyx for the tTA transgene (Santacruz et al., 2005). Mice on the SW background were genotyped for the human tau transgene (Lewis et al., 2000) by Transnetyx. Mice on the B6 background were genotyped for the presence of a progranulin knock-out allele (Ahmed et al., 2010), ATP13A2 knock-out allele (Rayaprolu et al., 2018), or the NEFH-tTA transgene (Walker et al., 2015) by PCR, the latter according to the protocol published on the Jackson Laboratories website (<https://www.jax.org/Protocol?stockNumber=025397&protocolID=18061>).

2.5 Chemicals and reagents

Commercially available standards for delta-8-tetrahydrocannabinol ($\Delta 8$ THC) (100 $\mu\text{g}/\text{mL}$), $\Delta 9$ THC (100 $\mu\text{g}/\text{mL}$), 11-OH-THC (100 $\mu\text{g}/\text{mL}$), 11-COOH-THC (100 $\mu\text{g}/\text{mL}$), and delta-9-tetrahydrocannabinol-d3 ($\Delta 9$ THC-d3) [(100 $\mu\text{g}/\text{mL}$); internal standard (IS)] stock solutions were obtained from Cerilliant (Round Rock, TX, United States). Liquid chromatography-mass spectrometry (LC-MS) grade water, methanol, and formic acid were purchased from Fisher Scientific (Fair Lawn, NJ, United States).

2.6 UPLC-MS/MS analysis

Primary stock solutions were diluted to obtain secondary mix stocks of 1,000 ng/mL and 10,000 ng/mL of $\Delta 8$ THC, $\Delta 9$ THC, 11-OH-THC, and 11-COOH-THC, in acetonitrile. These stocks were then further diluted in acetonitrile to produce working stocks for calibration standards (CS) of 25, 50, 100, 250, 500, 1,000, 1,500, and 2,500 ng/mL of $\Delta 8$ THC, $\Delta 9$ THC, 11-OH-THC, and 11-COOH-THC. Quality control (QC) working stock solutions were prepared from a second set of stocks at concentrations of 25, 75, 1,250, and 2000 ng/mL.

A Waters Acquity Class-I UPLC coupled with a Xevo TQ-S Micro triple quadrupole mass spectrometer (Waters, Milford, MA, United States) was used for the quantitative analysis. An in-house bioanalytical method available for the simultaneous quantification of $\Delta 8$ THC, $\Delta 9$ THC, 11-OH-THC, and 11-COOH-THC was translated and validated for quantitative analysis in plasma and brain homogenates (Penman et al., 2023). A gradient method was applied to achieve chromatographic separation using a mobile phase consisting of water containing 0.1% formic acid (A) and methanol (B) and a Waters Acquity BEH C18 column (1.7 μm , 2.1 \times 100 mm) at a flow rate of 0.35 mL/min. The 5-min method started at a gradient of 25% A until 0.5 min then decreased to 5% until 4.5 min then re-equilibrated to 25% A until 5 min. Ionization of $\Delta 8$ THC, $\Delta 9$ THC, 11-OH-THC, and 11-COOH-THC was achieved in positive mode using electrospray ionization (ESI). The mass spectral analysis was achieved by multiple reaction monitoring

(MRM), and the compound parameters for analytes and IS are described in Table 2.

Drug-free plasma or brain homogenate was used to prepare CS and QC samples containing $\Delta 8$ THC, $\Delta 9$ THC, 11-OH-THC, and 11-COOH-THC. Prior to analysis, each brain was weighed and homogenized in triple distilled water at a ratio of one part brain to three parts water. CSs were generated by spiking 18 μL blank plasma or brain homogenate with 2 μL of calibration mix stocks to get a linear range of 2.5, 5, 10, 25, 50, 100, 150, and 250 ng/mL. The same process was used to generate the lower limit of quantification (LLOQ, 2.5 ng/mL) and low (LQC, 7.5 ng/mL), medium (MQC, 125 ng/mL), and high (HQC 200 ng/mL) QCs. After spiking, the CS and QC samples were vortex-mixed for 5 min at 650 rpm to ensure homogeneity. To prepare samples for analysis, 20 μL of plasma or brain homogenate samples, along with respective CS and QC samples, were aliquoted and quenched with 80 μL (1:4 ratio) of methanol containing 0.05% v/v formic acid and IS (25 ng/mL) to precipitate proteins. The quenched samples were vortex-mixed for 5 min at 650 rpm and then filtered through a 0.45 μm filter plate (Millipore, Burlington, MA, United States) for 3 min at 1,500 rpm at 4°C. The filtrates of all samples were then subjected to UPLC-MS/MS analysis.

A validated bioanalytical method, available in mouse serum, was further partially validated for sensitivity, selectivity, linearity, carryover, accuracy, and precision for the quantification of $\Delta 8$ THC, $\Delta 9$ THC, 11-OH-THC, and 11-COOH-THC in both mouse plasma and brain homogenate following Food and Drug Administration (FDA) guidelines for bioanalytical method validation (FDA, 2018). The LOD for each analyte was found at 1 ng/mL (response signal-to-noise ratio >3), while the LLOQ was selected at 2.5 ng/mL for all analytes (signal-to-noise ratio >10) with accuracy and precision within 20%. There were no endogenous substances eluting at the retention time of any analyte or IS when analyzing blank plasma or brain homogenate (Supplementary Figure S1). The calibration curve had a concentration range of 2.5–250 ng/mL and was found to be linear for all analytes with a coefficient of determination value > 0.99 for all runs. Carryover analysis of a blank sample immediately following an HQC of 200 ng/mL produced an analyte peak area <20% of the LLOQ for all analytes, and <5% of IS, showing negligible carryover. Intra- and inter-day accuracy and precision were performed during three different days at each QC level for both plasma and brain homogenate (Supplementary Table S1). All values were within acceptable limits of 15% target concentration, and within 20% for LLOQ concentration.

The TargetLynx™ application of MassLynx™ 4.2 was used for data processing and quantification of the UPLC/MS-MS data (Waters, Milford, MA, United States). Phoenix Version 6.4 (Certara, Princeton, NJ, United States) was used for the non-compartmental analysis of concentration-time data.

2.7 Statistical analysis

Statistical analyses were conducted using SPSS 27.0 (IBM, Armonk, NY, United States) and graphs were constructed in GraphPad Prism 9 (GraphPad Software, San Diego, CA, United States). In Experiment 1, plasma and brain $\Delta 9$ THC and metabolite concentrations were analyzed

TABLE 2 Compound parameters for analytes and internal standard (IS).

Compound	Mass transition (m/z)	Cone voltage (V)	Collision energy (V)	Retention time (min)
delta-8-tetrahydrocannabinol	315.24 > 122.99	26	34	3.44
delta-9-tetrahydrocannabinol	315.24 > 123.01	4	40	3.33
11-hydroxy-delta-9-tetrahydrocannabinol	331.25 > 193.11	6	22	2.10
11-nor-9-carboxy-delta-9-tetrahydrocannabinol	345.23 > 193.18	2	26	2.29
delta-9-tetrahydrocannabinol-D ₃ (IS)	318.30 > 196.09	58	24	3.31

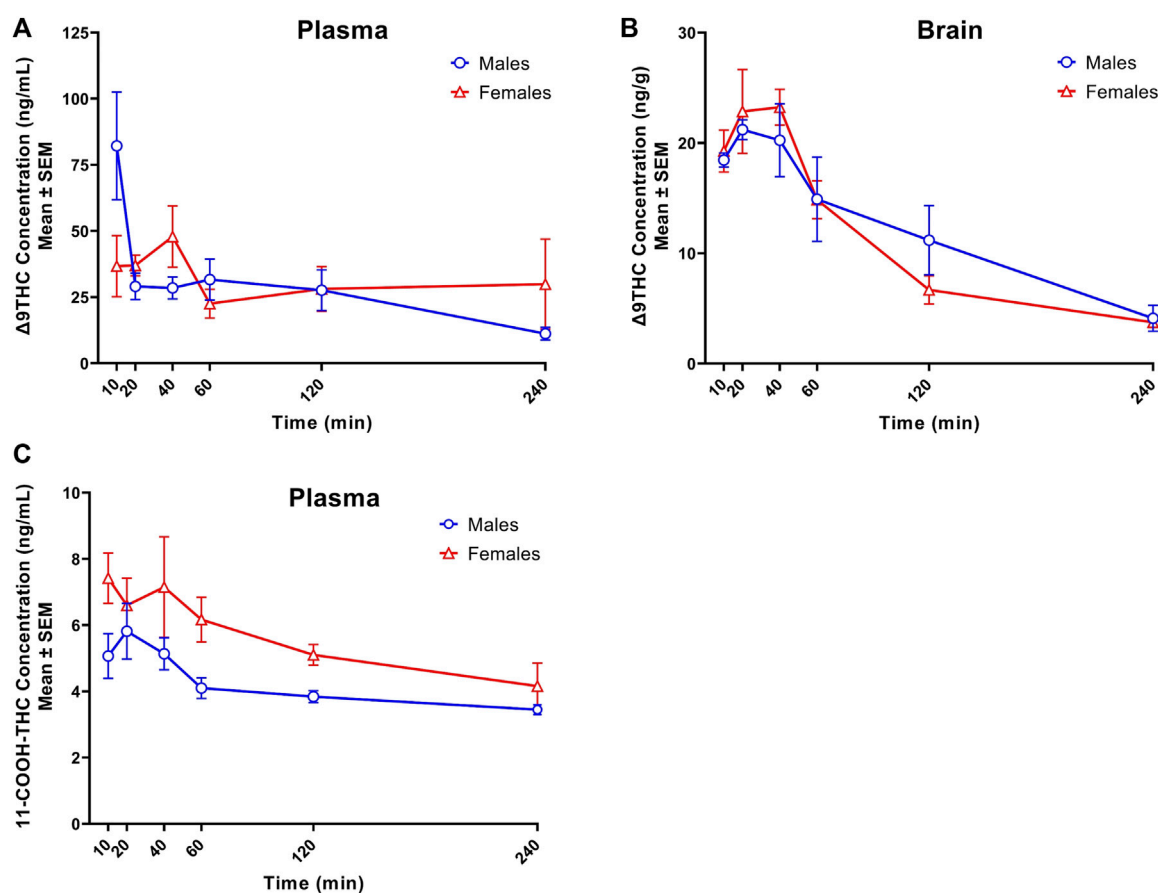


FIGURE 1

Concentration-time profiles of $\Delta 9$ THC and 11-COOH-THC following 1 h cannabis smoke exposure in young adult C57BL/6J mice (Experiment 1). Maximum plasma $\Delta 9$ THC concentrations were achieved 10 and 40 min post-smoke exposure in males ($C_{\max} = 82.2$ ng/mL) and females ($C_{\max} = 47.9$ ng/mL), respectively. A significant Sex \times Time interaction was observed in plasma $\Delta 9$ THC concentrations, with males having greater concentrations 10 min post-smoke exposure compared to females (A). Maximum brain $\Delta 9$ THC concentrations were achieved 20- and 40-min post-smoke exposure in males ($C_{\max} = 21.2$ ng/g) and females ($C_{\max} = 23.2$ ng/g), respectively. There was a significant main effect of Time on brain $\Delta 9$ THC concentrations, with levels declining after peak concentrations were achieved (B). A significant sex difference was observed in plasma 11-COOH-THC concentrations, with females achieving higher concentrations than males (C). Data are represented as the mean of individual mouse analyte concentrations at each time point.

using two-factor ANOVA, with sex (2 levels) and time post-smoke exposure (6 levels) as between-subjects factors, to assess sex differences and the effect of time following smoke exposure. In Experiment 2, strain comparisons between young adult mice were analyzed using a two-factor ANOVA, with strain (4 levels) and time (2 levels) as between-subjects factors. Significant effects of strain were further explored using a Tukey *post hoc* analysis. Additionally, the effect of sex was evaluated across strains in young adult mice using a two-factor ANOVA, with sex

(2 levels) and time (2 levels) as factors. For age comparisons in mice of the B6 and FVB strains, data were analyzed using two-factor ANOVA, with time (2 levels) and age group (3 levels for B6 mice and 2 levels for FVB mice) as factors. Six $\Delta 9$ THC plasma concentrations and one $\Delta 9$ THC brain concentration were statistical outliers (greater than ± 2 SDs outside the group mean) and removed from analyses. Demographics of outliers are described in Table 1. In Experiment 3, the effects of smoke exposure duration on plasma and brain $\Delta 9$ THC and

TABLE 3 Pharmacokinetic parameters of $\Delta 9$ THC in brain and plasma after inhalation (Exp 1).

Parameter	Brain			Plasma		
	Combined ^a	Male ^b	Female ^c	Combined ^a	Male ^b	Female ^c
Dose (mg/kg)	0.19	0.18	0.19	0.19	0.18	0.19
C_{max} (ng/mL or ng/g)	22.0	21.2	23.2	70.4 \pm 9.7 ^d	82.2	47.9
T_{max} (h)	0.33	0.33	0.67	0.73 \pm 0.27 ^d	0.17	0.67
AUC _{last} (h \times ng/mL or h \times ng/g)	44.7	47.5	41.9	120.2	123.5	121.4
Cl/F (L/h/kg)	-	-	-	0.7	1.2	0.3
V_z /F(L/kg)	-	-	-	5.1	3.2	5.3

^aValues represent the average of all samples at each time point (male and female mice).

^bValues represent the average of all male samples at each time point.

^cValues represent the average of all female samples at each time point.

^dValues represent the mean of all samples \pm SEM.

Abbreviations: AUC_{last} = area under the plasma concentration-time profile up to the last measurable concentration, Cl = clearance, C_{max} = maximum plasma concentration after exposure, T_{max} = time to reach C_{max} , V_z = volume of distribution, F = bioavailability fraction.

metabolite concentrations were analyzed using two-factor ANOVA, with the number of cannabis cigarettes (2 levels) and sex (2 levels) as factors. Significance was defined as $p < 0.05$ for all analyses.

3 Results

3.1 Experiment 1. Pharmacokinetics of $\Delta 9$ THC and its metabolites following cannabis smoke exposure

Figure 1 displays plasma $\Delta 9$ THC, brain $\Delta 9$ THC, and plasma 11-COOH-THC concentration-time profiles following 1 h exposure to cannabis smoke. The experiment was conducted in two cohorts for a total of 72 B6 mice (half female in each cohort). $\Delta 9$ THC and metabolite concentrations from both cohorts were combined and averaged for each time point. Plasma and brain $\Delta 8$ THC concentrations were below the LLOQ (2.5 ng/mL or ng/g) in samples collected from all 72 mice (as well as in Experiments 2 and 3), and will not be described further. The pharmacokinetic profile of $\Delta 9$ THC in brain and plasma after inhalation is described in Table 3.

Peak plasma $\Delta 9$ THC concentrations (C_{max}) in male and female mice were achieved at 10 min and 40 min, respectively, after smoke exposure, with males achieving a comparatively higher C_{max} than females (C_{max} males = 82.2 ng/mL, C_{max} females = 47.9 ng/mL; Figure 1A). Consistent with this difference in timing and magnitude of C_{max} , a two-way ANOVA (Time \times Sex) revealed a significant Time \times Sex interaction (F (5,58) = 2.854, $p = 0.023$) in addition to a main effect of Time, such that plasma $\Delta 9$ THC levels declined across time points (F (5,58) = 3.595, $p = 0.007$), although there was no main effect of Sex (F (1,58) = 0.053, $p = 0.818$). The measured plasma $\Delta 9$ THC concentration-time data were subjected to linear trapezoidal method and an area under the curve (AUC) of 123.5 and 121.4 h \times ng/mL was observed in male and female mice, respectively.

Brain $\Delta 9$ THC C_{max} values in male and female mice were achieved at 20 and 40 min, respectively, after smoke exposure (C_{max} males = 21.2 ng/g, C_{max} females = 23.2 ng/g; Figure 1B). A two-way ANOVA (Time \times Sex) revealed a main effect of Time (F (5,58) = 18.055, $p < 0.0001$), such that brain $\Delta 9$ THC concentrations declined across time

points, but neither a main effect of Sex (F (1,58) = 0.004, $p = 0.947$) nor a Time \times Sex interaction (F (5,58) = 0.606, $p = 0.696$). The measured brain $\Delta 9$ THC concentration-time data were subjected to linear trapezoidal method and an AUC of 47.5 and 41.9 h \times ng/g was observed in male and female mice, respectively.

Males achieved peak plasma 11-OH-THC concentrations (3.45 ng/mL) 20 min post-smoke exposure and females achieved peak concentrations (3.97 ng/mL) 10 min post-smoke exposure (Table 4). Following peak plasma 11-OH-THC concentrations in both males and females, however, a majority of samples (≥ 5 mice per sex per time point) were below the LLOQ. Males achieved peak brain 11-OH-THC concentrations (5.93 ng/mL) 10 min following exposure, whereas females achieved peak concentration (3.9 ng/mL) 40 min post exposure. 11-OH-THC concentrations in brain samples collected beyond the 40 min time point were largely below the LLOQ (Table 5).

In contrast to plasma 11-OH-THC, concentrations of the secondary $\Delta 9$ THC metabolite 11-COOH-THC were above the LLOQ in all but six plasma samples. Of those six samples below the LLOQ, five were from males at the 120 and 240 min time points. A two-way ANOVA (Time \times Sex) revealed a significant sex difference in plasma 11-COOH-THC concentrations (F (1,54) = 10.605, $p = 0.002$, Figure 1C) with females maintaining higher concentrations than males at all 6 time points. Additionally, there was a main effect of Time (F (5, 54) = 2.845, $p = 0.024$) such that concentrations declined across time points, but no Time \times Sex interaction (F (5,54) = 0.380, $p = 0.860$). Brain 11-COOH-THC concentrations were below the LLOQ in samples from all 72 mice.

3.2 Experiment 2. $\Delta 9$ THC and its metabolites following cannabis smoke exposure in mice of different strains and ages

Non-transgenic mice of four different strains (n = 90) used commonly to study neurodegenerative and other neurological conditions were exposed to smoke from burning 5 cannabis cigarettes sequentially, and plasma and brain samples were collected 10 and 40 min after exposure. In two of the strains, mice of different ages (young adult, middle-aged, advanced age) were used to determine

TABLE 4 Time course of plasma $\Delta 9$ THC, 11-OH-THC, and 11-COOH-THC concentrations.

Exp. 1	Plasma Concentrations Males			Plasma Concentrations Females		
	$\Delta 9$ THC (ng/mL)	11-OH-THC (ng/mL)	11-COOH-THC (ng/mL)	$\Delta 9$ THC (ng/mL)	11-OH-THC (ng/mL)	11-COOH-THC (ng/mL)
10	82.2 \pm 20.4	3.4 \pm 0.5	5.1 \pm 0.7	36.7 \pm 11.6	4.0 \pm 0.9	7.4 \pm 0.8
20	29.1 \pm 5.0	3.5 \pm 0.3	5.8 \pm 0.8	37.0 \pm 3.9	< LLOQ	6.6 \pm 0.8
40	28.5 \pm 4.1	< LLOQ	5.1 \pm 0.5	47.9 \pm 11.6	< LLOQ	7.2 \pm 1.5
60	31.6 \pm 7.8	< LLOQ	4.1 \pm 0.3	22.6 \pm 5.5	< LLOQ	6.2 \pm 0.7
120	27.6 \pm 7.7	< LLOQ	3.8 \pm 0.2	28.1 \pm 8.5	< LLOQ	5.1 \pm 0.3
240	11.2 \pm 2.4	< LLOQ	3.5 \pm 0.2	29.9 \pm 15.5	< LLOQ	4.2 \pm 0.7

Abbreviations: LLOQ, lower limit of quantification.

TABLE 5 Time course of brain $\Delta 9$ THC, 11-OH-THC, and 11-COOH-THC concentrations.

Exp. 1	Brain Concentrations Males			Brain Concentrations Females		
	$\Delta 9$ THC (ng/g)	11-OH-THC (ng/g)	11-COOH-THC (ng/g)	$\Delta 9$ THC (ng/g)	11-OH-THC (ng/g)	11-COOH-THC (ng/g)
10	18.5 \pm 0.6	5.9 \pm 1.1	< LLOQ	19.3 \pm 1.9	3.1 \pm 0.2	< LLOQ
20	21.2 \pm 0.9	3.4 \pm 0.4	< LLOQ	22.9 \pm 3.8	< LLOQ	< LLOQ
40	20.2 \pm 3.3	3.6 \pm 0.4	< LLOQ	23.2 \pm 1.6	3.9 \pm 0.6	< LLOQ
60	14.9 \pm 3.8	< LLOQ	< LLOQ	14.9 \pm 1.7	< LLOQ	< LLOQ
120	11.2 \pm 3.1	< LLOQ	< LLOQ	6.7 \pm 1.3	< LLOQ	< LLOQ
240	4.1 \pm 1.2	< LLOQ	< LLOQ	3.7 \pm 0.5	< LLOQ	< LLOQ

Abbreviations: LLOQ, lower limit of quantification.

whether age affects $\Delta 9$ THC pharmacokinetics. Because limitations in availability resulted in mice of both sexes and all ages not being represented equally across all strains and post-exposure time points (see Table 1), separate analyses were used to a) compare strains in young adults; b) compare males and females in young adult and middle-aged mice; and c) compare age groups in the B6 and FVB strains. One mouse was excluded from the analyses due to positive transgenic status (female B6 mouse). Brain concentrations of 11-OH-THC and 11-COOH-THC were below the LLOQ for all samples. Plasma 11-OH-THC concentrations were above the LLOQ for 51/90 samples; however, there was an unequal distribution of quantifiable samples across strains and ages.

3.2.1 Effects of strain on $\Delta 9$ THC and its metabolites

Figure 2 shows plasma and brain $\Delta 9$ THC and plasma metabolite concentrations in young adult mice of all four strains following cannabis smoke exposure. Assessment of plasma $\Delta 9$ THC concentrations using a two-way ANOVA (Time \times Strain) revealed a significant main effect of Time ($F(1,33) = 7.230, p = 0.003$), such that, as expected, concentrations were lower at 40 than 10 min post-exposure (Figure 2A); however, there was no main effect of Strain ($F(3,33) = 0.164, p = 0.920$) or Strain \times Time interaction ($F(3,33) = 1.132, p = 0.351$). In contrast, the same analysis conducted on brain $\Delta 9$ THC concentrations revealed neither a main effect of Time ($F(1,34) = 1.832, p = 0.185$) nor a Strain \times Time interaction ($F(3,34) = 0.310, p = 0.818$), but there was a significant effect

of Strain ($F(3,34) = 2.972, p = 0.045$, Figure 2B). Tukey *post hoc* comparisons revealed that 129 mice had significantly higher brain $\Delta 9$ THC concentrations than FVB mice ($p = 0.041$), but that no other comparisons reached statistical significance. For the primary (11-OH-THC) and secondary (11-COOH-THC) metabolites in plasma, there were neither significant main effects of Strain and Time nor an interaction between the two variables ($F_s < 1.428, p_s > 0.250$; Figures 2C, D).

3.2.2 Effects of sex on $\Delta 9$ THC and its metabolites

To evaluate sex differences in $\Delta 9$ THC plasma and brain concentrations in young adult mice, data were collapsed across strain and evaluated via a two-factor ANOVA (Sex \times Time). For $\Delta 9$ THC plasma concentrations (Figure 3A), there was a significant main effect of Time ($F(1,37) = 13.285, p < 0.001$) such that mice of both sexes had lower $\Delta 9$ THC concentrations 40 min after smoke exposure compared to 10 min after exposure, but neither a main effect of Sex ($F(1,37) = 0.639, p = 0.429$) nor a Sex \times Time interaction ($F(1,37) = 2.421, p = 0.128$). For brain $\Delta 9$ THC concentrations (Figure 3B), there were neither main effects of Sex ($F(1,38) = 0.056, p = 0.815$) nor Time ($F(1,38) = 1.560, p = 0.219$), nor was there a Sex \times Time interaction ($F(1,38) = 0.162, p = 0.690$). The same analyses conducted in middle aged mice (collapsed across FVB and B6 strains only), revealed patterns similar to those in young adults for $\Delta 9$ THC plasma concentrations (Figure 4A), with a

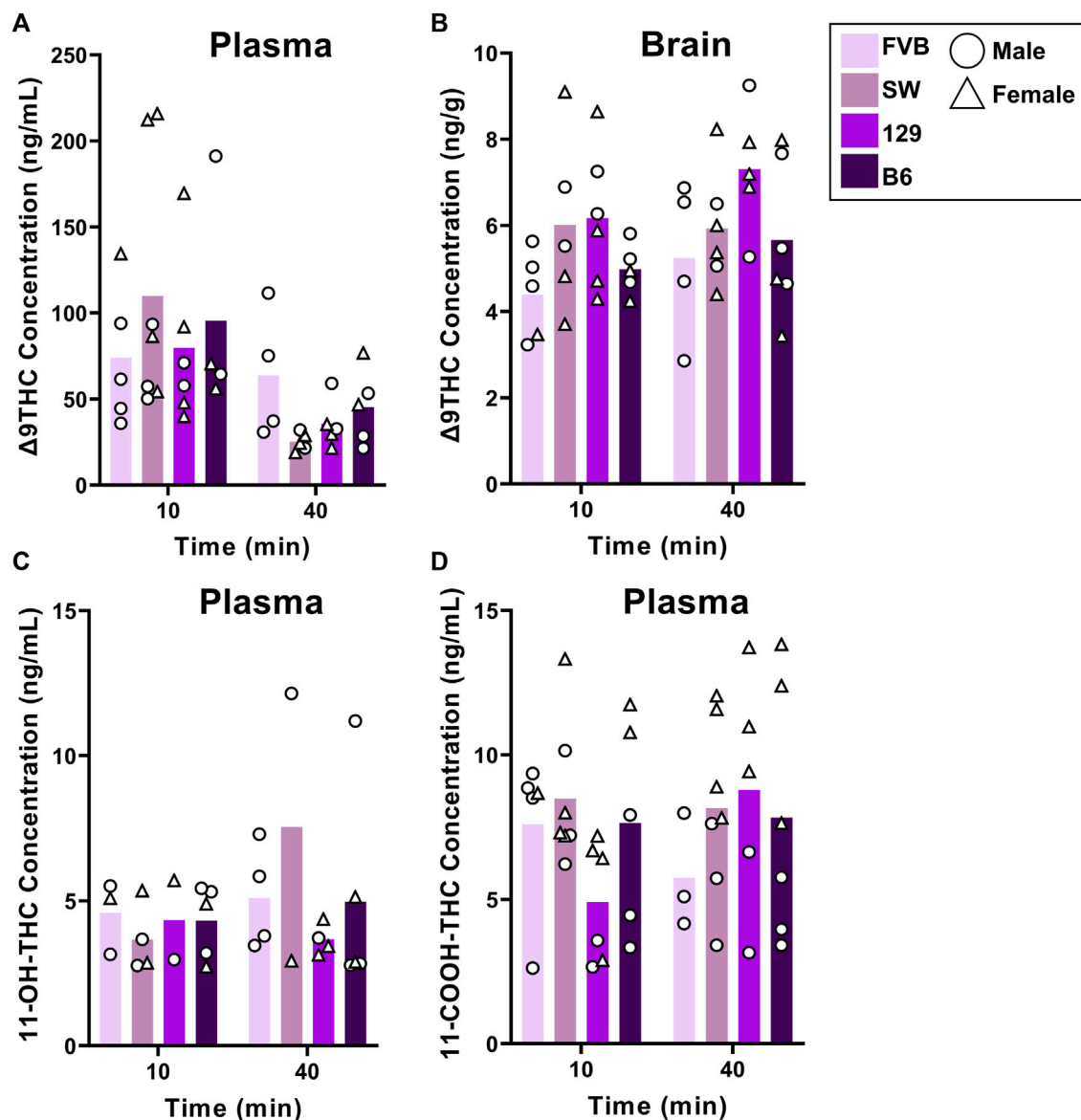


FIGURE 2

Effects of strain on $\Delta 9$ THC and its metabolite concentrations after smoke exposure in young adult mice (Experiment 2). No strain differences were observed in plasma $\Delta 9$ THC concentrations (A). There was a significant main effect of Strain on brain $\Delta 9$ THC concentrations, with 129 mice achieving significantly greater concentrations than FVB mice (B). A main effect of strain was not observed in plasma 11-OH-THC (C) or plasma 11-COOH-THC concentrations (D).

significant main effect of Time ($F(1,30) = 4.238, p = 0.048$) but no main effect of Sex ($F(1,30) = 0.008, p = 0.927$) and no Sex \times Time interaction ($F(1,30) = 0.026, p = 0.872$). There were also no sex differences in $\Delta 9$ THC brain concentrations in middle aged mice ($F(1,28) = 0.127, p = 0.724$, Figure 4B) nor was there a Sex \times Time interaction ($F(1,28) = 1.352, p = 0.255$), but there was a significant main effect of Time ($F(1,28) = 5.489, p = 0.026$), with middle aged mice of both sexes having lower concentrations at 40 compared to 10 min after smoke exposure.

Sex differences in plasma primary and secondary $\Delta 9$ THC metabolite concentrations were also assessed in young adult mice, collapsed across strains. For 11-OH-THC, there were neither main effects of Sex ($F(1,25) = 1.140, p = 0.296$) nor

Time ($F(1,25) = 0.427, p = 0.520$), nor a Sex \times Time interaction ($F(1,25) = 2.508, p = 0.126$; Figure 3C). In contrast, for plasma 11-COOH-THC, although there was no main effect of Time ($F(1,40) = 1.102, p = 0.300$), there was a significant main effect of Sex ($F(1,40) = 26.386, p < 0.001$) as well as a Sex \times Time interaction ($F(1,40) = 6.046, p = 0.018$) with the greater levels in females compared to males being more robust at 40 compared to 10 min (Figure 3D). Among middle-aged mice (collapsed across FVB and B6 strains only), the patterns of results were comparable to those observed in young mice, with no main effects or interactions for plasma 11-OH-THC (Figure 4C) but a significant main effect of Sex ($F(1,31) = 43.097, p < 0.001$) and Sex \times Time interaction ($F(1,31) = 4.314, p = 0.046$) for plasma 11-COOH-THC (Figure 4D).

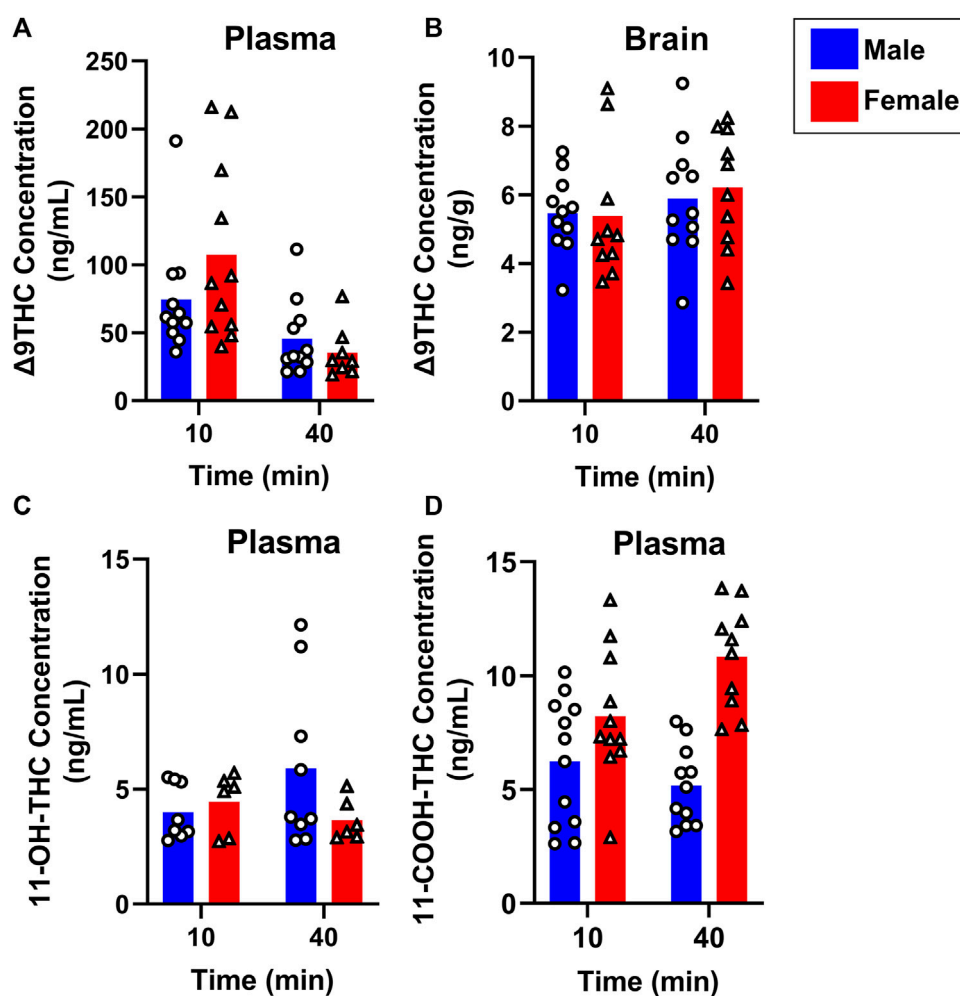


FIGURE 3

Effects of sex on $\Delta 9$ THC and its metabolite concentrations after smoke exposure in young adult mice (Experiment 2). Collapsed across strains, there was no significant effect of Sex on plasma $\Delta 9$ THC (A), brain $\Delta 9$ THC (B), or plasma 11-OH-THC (C) concentrations. Significant sex differences were observed in plasma 11-COOH-THC concentrations, with females achieving greater levels than males (D).

3.2.3 Effects of age on $\Delta 9$ THC and its metabolites

B6 and FVB mice were used to assess the effects of age on $\Delta 9$ THC and metabolite concentrations, as these strains had more than one age group. Plasma and brain $\Delta 9$ THC and plasma metabolite concentrations in young adult, middle aged, and aged B6 mice following 1 hour of cannabis smoke exposure are shown in Figure 5. For plasma $\Delta 9$ THC (Figure 5A), a two-way ANOVA (Time \times Age) revealed neither main effects of Time ($F(1,26) = 3.474, p = 0.074$) or Age ($F(2,26) = 0.769, p = 0.474$), nor a Time \times Age interaction ($F(2,26) = 0.987, p = 0.386$). The same analysis conducted on brain $\Delta 9$ THC concentrations (Figure 5B) also revealed no main effects of Time ($F(1,26) = 2.853, p = 0.103$) or Age ($F(2,26) = 1.090, p = 0.351$); however, there was a significant Time \times Age interaction ($F(2,26) = 3.741, p = 0.037$) with middle aged mice having higher levels at the 10 min time point compared to both young adult and aged mice at both time points. There were no significant main effects of Time or Age, nor a significant Age \times Time interaction, for 11-OH-THC and 11-COOH-THC concentrations ($F_s < 0.944, p_s > 0.348$; Figures 5C, D).

The same analysis in young adult and middle aged FVB mice showed no main effects of Age or Time, nor significant Age \times Time interactions, in $\Delta 9$ THC plasma and brain concentrations ($F_s < 2.740, p_s > 0.111$; Figures 6A, B) or plasma 11-OH-THC and 11-COOH-THC concentrations ($F_s < 2.063, p_s > 0.164$; Figures 6C, D).

3.3 Experiment 3. $\Delta 9$ THC and its metabolites following different durations of smoke exposure

To determine how $\Delta 9$ THC and metabolite levels differ as a function of the amount of cannabis smoke exposure, B6 mice were exposed to smoke generated from burning either 3 or 5 cannabis cigarettes, with brain and plasma samples collected 40 min after smoke exposure. Figure 7 displays plasma and brain $\Delta 9$ THC, 11-OH-THC, and 11-COOH-THC concentrations in males and females in both cigarette conditions. A two-way ANOVA (Cigarette number \times Sex) revealed no significant main effects of Cigarette number or Sex, and no significant Cigarette number \times Sex

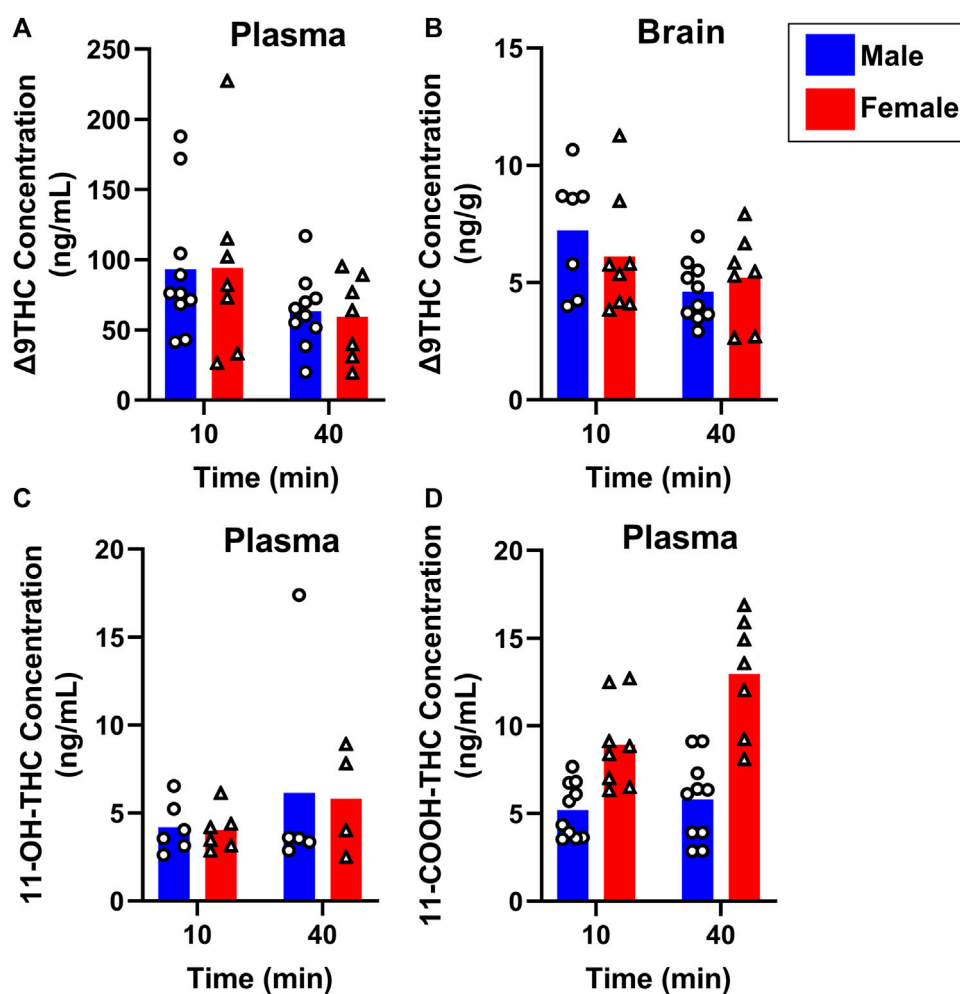


FIGURE 4

Effects of sex on $\Delta 9$ THC and its metabolite concentrations after smoke exposure in middle-aged mice (Experiment 2). Collapsed across strains, there was no significant effect of Sex on plasma $\Delta 9$ THC (A), brain $\Delta 9$ THC (B), or plasma 11-OH-THC (C) concentrations. Significant sex differences were observed in plasma 11-COOH-THC concentrations, with females achieving greater levels than males (D).

interactions, for plasma $\Delta 9$ THC or plasma 11-OH-THC (Figures 7A, B). Main effects of Cigarette number ($F(1, 15) = 5.483, p = 0.033$) and Sex ($F(1, 15) = 5.393, p = 0.035$) were observed for plasma 11-COOH-THC concentrations (Figure 7C), but there was no Cigarette number \times Sex interaction ($F(1, 15) = 2.286, p = 0.151$). The same analysis conducted on brain $\Delta 9$ THC and 11-OH-THC concentrations showed no main effects of Cigarette number or Sex, nor were there significant Cigarette number \times Sex interactions ($F_s < 2.146, p_s > 0.162$; Figures 7D, E). Brain 11-COOH-THC was undetected in all samples.

4 Discussion

The present study assessed the pharmacokinetics of $\Delta 9$ THC and its two major metabolites, 11-OH-THC and 11-COOH-THC, in both plasma and brain following cannabis smoke exposure. To our knowledge, this is the first evaluation of both plasma and brain concentrations of all three analytes following cannabis smoke exposure in male and female mice. We established a time course

of $\Delta 9$ THC and metabolite concentrations, and assessed the effects of strain, sex, age, and dose on plasma and brain concentrations.

4.1 Plasma $\Delta 9$ THC

Previous studies measuring plasma $\Delta 9$ THC concentrations following cannabis smoke exposure in male mice found that exposure to smoke from burning 200 mg of cannabis (3.5% THC) results in C_{max} of plasma $\Delta 9$ THC ranging between 385–402 ng/mL (Lichtman et al., 2001; Wilson et al., 2006). These values are significantly higher than the C_{max} values obtained in Experiment 1 (82.2 ng/mL in males and 47.9 ng/mL in females); however, these prior studies employed a “nose-only” smoke exposure model (mice were restrained such that their nose was in the smoke stream), which could account for the high $\Delta 9$ THC plasma concentrations. A recent study using a protocol consisting of two smoke exposure sessions with 6 cannabis cigarettes (10%–14% THC) burned in each session resulted in C_{max} of plasma $\Delta 9$ THC ranging between 125–150 ng/mL in male and female mice (Fantauzzi et al., 2021). These levels are more

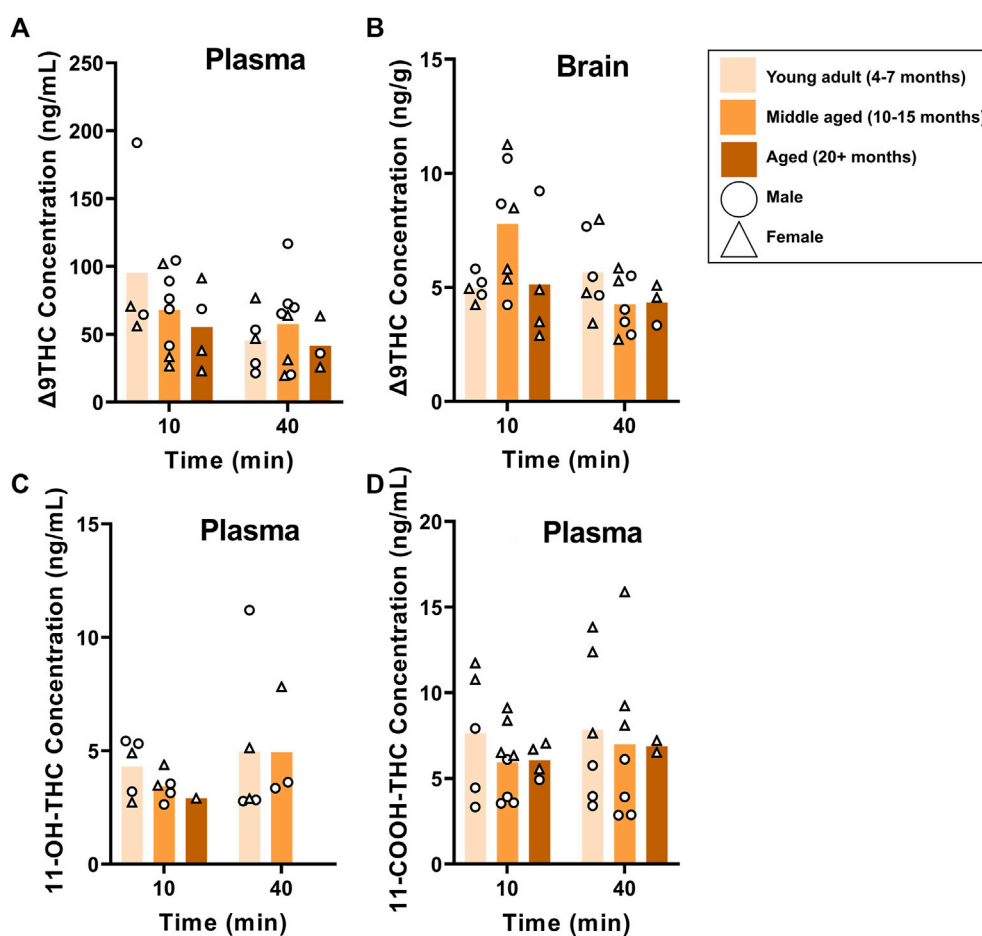


FIGURE 5

Effects of age on $\Delta 9$ THC and its metabolite concentrations after smoke exposure in young adult, middle-aged, and advanced age C57BL/6J mice (Experiment 2). There was no main effect of Age on plasma $\Delta 9$ THC (A), brain $\Delta 9$ THC (B), or plasma metabolites (C, D). A significant Age \times Time interaction in brain $\Delta 9$ THC concentrations (B), however, revealed that middle aged mice had increased concentrations 10 min post-smoke exposure compared to all other age groups at both time points.

comparable to those achieved in the present study, particularly since their cannabis cigarettes contained considerably higher $\Delta 9$ THC content. Similar to the present study, mice in the Fantauzzi et al. study were subjected to whole body smoke exposure, which could account for the lower plasma $\Delta 9$ THC concentrations compared to studies utilizing nose-only smoke exposure.

One aim of the current study was to evaluate whether the route of cannabis administration (whole-body exposure in freely-moving mice) produced $\Delta 9$ THC concentrations comparable to those observed in humans. Pharmacokinetic studies of smoked cannabis in humans have shown C_{max} values for plasma $\Delta 9$ THC ranging from 46.5–76 ng/mL in occasional cannabis users (Toennes et al., 2008; Fabritius et al., 2013; Hartman et al., 2015; Newmeyer et al., 2016; Matheson et al., 2020) and 95–153 ng/mL in heavy cannabis users (Toennes et al., 2008; Fabritius et al., 2013; Newmeyer et al., 2016). Since humans can manipulate smoke topography to achieve higher plasma $\Delta 9$ THC C_{max} and often use cannabis containing high THC concentrations (e.g., >15%) (NIDA, 2021), animal models require longer exposure to cannabis smoke to achieve similar C_{max} levels. In the current study, a

5-cigarette (1 h) regimen was used to account for lower cannabis THC concentrations (~6%) and the large percentage (~50%) of THC destroyed by pyrolysis (Ravula et al., 2019). Moreover, while the freely-moving, whole-body exposure model avoids the restraint stress necessary to implement nose-only exposure (e.g., Lichtman et al., 2001), the amount of exposure achieved is less than in such models and therefore requires a longer duration of smoke inhalation (indeed, the dose of $\Delta 9$ THC to which mice were exposed in Experiment 1 was estimated at 0.19 mg/kg; Table 3). Nevertheless, the 5-cigarette regimen yielded plasma $\Delta 9$ THC C_{max} values in mice that fall within those ranges observed in humans, suggesting that it has reasonable translational validity. Additionally, Experiment 3 explored a shorter duration of smoke exposure (~36 min) using 3 cigarettes, and found that it produced plasma and brain $\Delta 9$ THC concentrations comparable to the 5 cigarette regimen.

There are inconsistencies in regard to sex differences in $\Delta 9$ THC plasma concentrations in humans, with some studies noting significantly lower concentrations in females compared to males (Matheson et al., 2020) and other studies finding no sex differences (Sholler et al., 2021; Arkell et al., 2022). Similarly, in

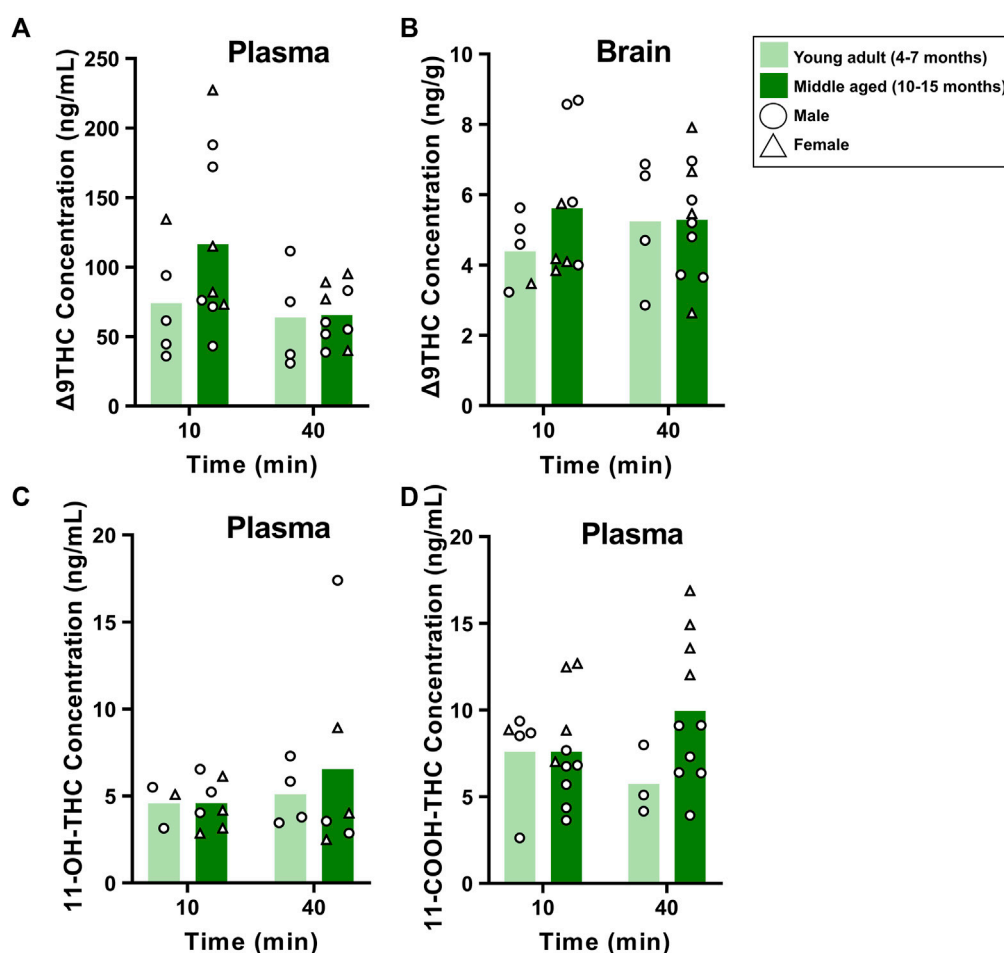


FIGURE 6

Effects of age on $\Delta 9$ THC and its metabolite concentrations after smoke exposure in young adult and middle aged FVB mice (Experiment 2). There were no main effects of Age or Age \times Time interactions on plasma $\Delta 9$ THC (A), brain $\Delta 9$ THC (B), or plasma metabolite concentrations (C, D).

the current study, Experiment 1 found that females achieved C_{max} values approximately half of those in males, and at a later time point compared to males, whereas in Experiment 2 there were no sex differences at the 10-min time point in young adult mice collapsed across strain. Notably, however, while there were no significant Sex \times Time interactions or main effects of Sex in young adult mice in each separate strain in Experiment 2, B6 males had numerically higher levels than B6 females 10 min post-smoke exposure, whereas there was an opposite trend in FVB and SW mice, with females having higher levels than males at the 10 min time point. These contrasting trends may have contributed to the absence of overall sex differences when all mice were collapsed across strains. Aside from the Sex \times Time interaction revealed in Experiment 1, there were no significant strain, sex, age, no dose differences in plasma $\Delta 9$ THC concentrations in the present study.

4.2 Brain $\Delta 9$ THC

In Experiment 1, peak brain $\Delta 9$ THC concentrations were achieved in male (21.2 ng/g) and female (23.2 ng/g) mice 20 and

40 min following smoke exposure, respectively. This delay relative to peak plasma levels was expected, as it takes time for the drug to distribute into tissues, and is consistent with a previous study of vaporized $\Delta 9$ THC in rats that showed peak brain concentrations achieved 15 and 30 min following THC vapor exposure in males and females, respectively (Baglot et al., 2021). Pharmacokinetic studies of cannabis smoke exposure in mice show $\Delta 9$ THC concentrations of 136–400 ng/g in brains collected 20 min following smoke exposure (Wilson et al., 2006; Poklis et al., 2010); however, these studies used nose-only smoke exposure in which considerably higher plasma $\Delta 9$ THC were obtained. In studies of vaporized THC in adult rats, peak $\Delta 9$ THC brain concentrations ranged between 110–125 ng/g when rats were exposed to 100 mg/mL and 200 mg/mL $\Delta 9$ THC (Hložek et al., 2017; Baglot et al., 2021). Although the peak values obtained in Experiment 1 fall below the ranges of prior rodent studies, they are consistent with a study conducted in postmortem human brain tissues from 11 cases positive for cannabinoids, which reported $\Delta 9$ THC brain concentrations ranging between 3.71–43.6 ng/g (Saenz et al., 2017).

There were no sex differences in brain $\Delta 9$ THC concentrations in any of the three experiments; however, Experiment 2 revealed that strain and age can influence brain

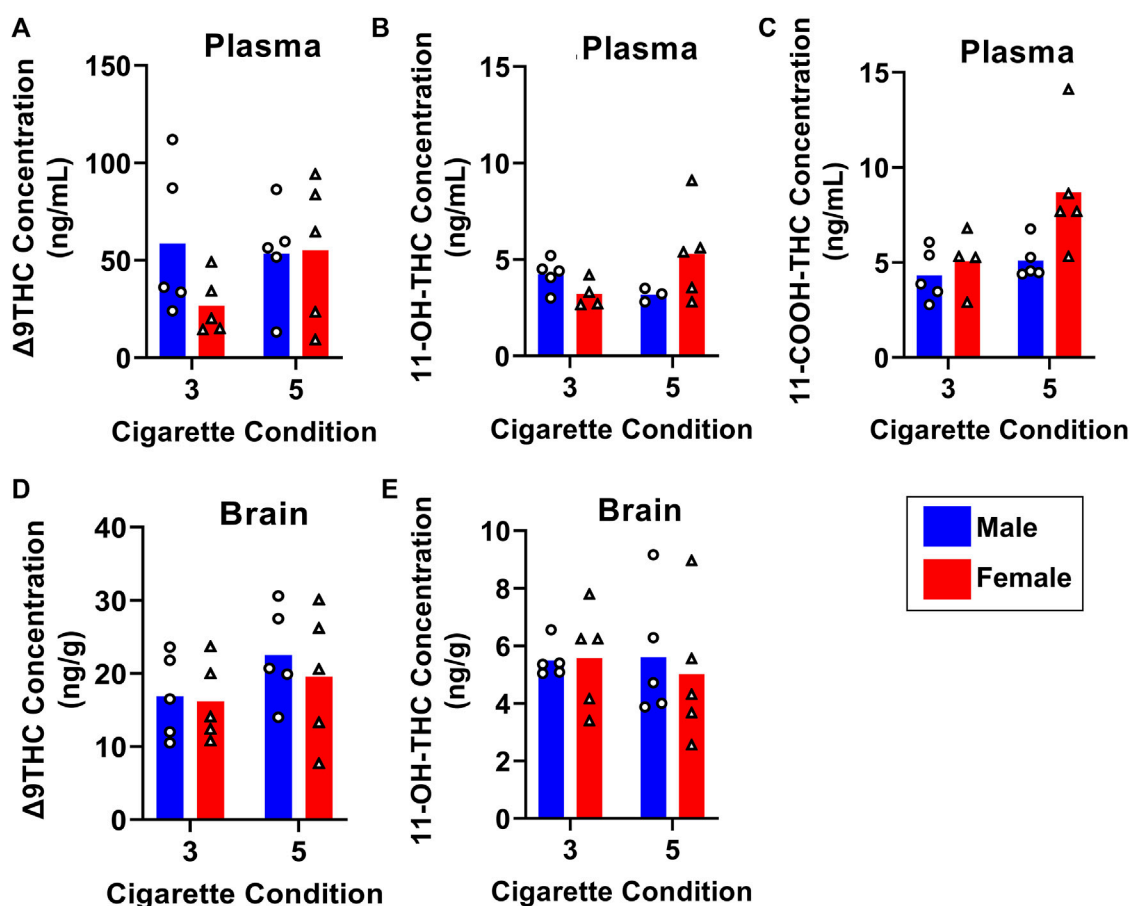


FIGURE 7

Effects of dose on $\Delta 9$ THC and its metabolite concentrations in young adult C57BL/6J mice (Experiment 3). Mice were exposed to smoke from burning either 3 or 5 cannabis cigarettes, followed by sample collection 40 min post-smoke exposure. There were no effects of Sex or Dose on $\Delta 9$ THC and 11-OH-THC in either plasma or brain (A, B, D, E). Females had significantly higher plasma 11-COOH-THC concentrations compared to males, and the 5-cigarette dose yielded significantly higher 11-COOH-THC concentrations in all mice (C).

$\Delta 9$ THC levels. This experiment revealed a main effect of strain on $\Delta 9$ THC brain concentrations, with 129 mice achieving higher levels compared to FVB mice. One possible explanation for this result is that FVB mice are more active than 129 mice (Bothe et al., 2004; Wilson et al., 2006), and some studies suggest that physical activity promotes clearance of $\Delta 9$ THC from fatty tissues back into circulation, where it can travel to the liver and be metabolized (Wong et al., 2013; Wong et al., 2014). Indeed, FVB mice had numerically higher levels of the secondary $\Delta 9$ THC metabolite 11-COOH-THC compared to 129 mice, which is consistent with this interpretation. Additionally, in the B6 strain, middle-aged mice (10–15 months old) had the highest brain $\Delta 9$ THC concentrations 10 min following smoke exposure compared to the other age groups at both time points. Aging is associated with decreases in water content and increases in fat content, and thus the distribution volume of lipophilic compounds such as $\Delta 9$ THC is generally increased (Turnheim, 2003). Although less is known about $\Delta 9$ THC accumulation and clearance in the brain specifically, it is safe to hypothesize that these increases in fat content, along with reduced liver function and physical activity, can affect $\Delta 9$ THC concentrations in the brain. Somewhat surprisingly, greater levels of brain $\Delta 9$ THC

were not detected in mice of advanced age (20+ months old), although the smaller sample size at this age precluded robust analysis of age differences.

4.3 $\Delta 9$ THC metabolites

$\Delta 9$ THC is mainly hydroxylated by CYP450 2C9, 2C19, and 3A4 enzymes, leading to production of the metabolite 11-OH-THC (other minor metabolites such as 8 β -OH-THC can also be formed, depending on the site of hydroxylation) (Matsunaga et al., 1995; Yamamoto et al., 1995). 11-OH-THC is oxidized to the secondary metabolite, 11-COOH-THC, which, unlike $\Delta 9$ THC and 11-OH-THC, does not have affinity for the CB1 receptor and is non-psychoactive (Andrenyak et al., 2017). Due to its rapid oxidation into the secondary metabolite, 11-OH-THC does not accumulate at high levels in either plasma or brain (Huestis, 2007). The results of Experiment 1 are consistent with these properties, as plasma and brain concentrations of 11-OH-THC were below the LLOQ for almost all samples obtained after the 40-min time point. Previous work showed that 11-OH-THC plasma

concentrations are approximately 6%–10% of plasma Δ^9 THC concentrations 45 min after the start of smoking (Wall and Perez-Reyes, 1981; Huestis et al., 1992; Karschner et al., 2009), meaning that approximately 2.9–8.2 ng/mL concentrations of plasma 11-OH-THC would be expected in the present study based on peak plasma Δ^9 THC concentrations of 48–82 ng/mL. Indeed, a majority of the quantifiable samples had 11-OH-THC values in that range. Rat pharmacokinetic studies show peak plasma concentrations ranging between 2–25 ng/mL for 11-OH-THC (Baglot et al., 2021; Ruiz et al., 2021b) and human studies range between 2–14.2 ng/mL (Fabritius et al., 2013; Hartman et al., 2015; Lee et al., 2015; Newmeyer et al., 2016; Matheson et al., 2020; Sholler et al., 2021; Arkell et al., 2022), which also matches the results of the present study. Samples from Experiment 2 and 3 revealed no sex differences in plasma or brain 11-OH-THC concentrations. Although there were no main effects or interactions involving strain or age on plasma 11-OH-THC concentrations in Experiment 2, unequal distribution of mouse demographics prevented full comparisons across all strains and age groups.

Despite the fact that sex differences were not observed in 11-OH-THC plasma concentrations, all three experiments revealed robust sex differences in 11-COOH-THC plasma concentrations, with females achieving higher concentrations than males. Inhaled cannabis pharmacokinetic studies in rats have shown the same pattern (Baglot et al., 2021; Ruiz et al., 2021b); however, metabolite analyses in mouse studies utilizing cannabis smoke exposure have been largely unexplored. Human pharmacokinetic studies have not found consistent sex differences in 11-COOH-THC concentrations, with reports of either lower concentrations in females compared to males (Matheson et al., 2020; Sholler et al., 2021) or no sex differences (Arkell et al., 2022). The sex differences supported by our study may point to species-specific differences in Δ^9 THC metabolism. One possible explanation for these results concerns differences in cytochrome P450 enzyme activity. Early studies showed that cytochrome P450 enzymes in female rat liver primarily metabolize Δ^9 THC into 11-OH-THC, whereas males produce 11-OH-THC along with multiple other primarily inactive metabolites due to regioselectivity differences in male and female enzymes (Narimatsu et al., 1991; Yamamoto et al., 1995). Given that females primarily metabolize Δ^9 THC into 11-OH-THC, which then further oxidizes into 11-COOH-THC, these sex differences in the secondary metabolite fall in line with the differences in enzyme activity. Although this idea would predict sex differences in plasma 11-OH-THC concentrations as well, these differences might not be captured due to the rapid oxidation of 11-OH-THC, whereas 11-COOH-THC accumulates more readily due to its slower clearance. This difference is important to consider, particularly in research assessing effects of cannabis on inflammation and neurodegenerative conditions associated with neuroinflammation such as Alzheimer's disease, as 11-COOH-THC remains in the body for extended periods of time (Grotenhermen, 2003; Sharma et al., 2012) and has been suggested to have anti-inflammatory properties (Ujváry and Grotenhermen, 2014). In humans, heavy/frequent cannabis smokers have peak 11-COOH-THC concentrations between 45–155 ng/mL (Fabritius et al., 2013; Lee et al., 2015; Newmeyer et al., 2016), whereas occasional cannabis users have ranges between 7.2 and 15 ng/mL (Fabritius et al., 2013;

Newmeyer et al., 2016). Peak values for mice in the current study were within the range of occasional cannabis users, consistent with the fact that they were naïve to cannabis prior to exposure. As 11-COOH-THC concentrations accumulate in frequent users, it will be important in future studies to evaluate 11-COOH-THC concentrations following chronic cannabis smoke exposure. There were no differences in plasma 11-COOH-THC concentrations as a function of mouse strain or age. Finally, 11-COOH-THC concentrations in brain samples were below the LLOQ in all experiments, which agrees with the fact that the compound is less lipophilic than Δ^9 THC and 11-OH-THC and has less propensity to accumulate in brain tissue (Huestis, 2007).

4.4 Limitations and conclusions

Limitations of this study include starting sample collection 10 min following smoke exposure. Although this timepoint was the earliest possible given the logistics of sample collection, it may have reduced C_{max} values for Δ^9 THC (as well as levels of 11-OH-THC) since peak values can be achieved as early as 3 min following exposure (Grotenhermen, 2003). Additionally, in Experiment 2, more balanced demographics of mice could have allowed for strain and age comparisons with greater statistical power. An area of future work could include a similar full evaluation of Δ^9 THC and its metabolites through an oral route of administration, especially if translating to medicinal use since smoking has numerous adverse health effects.

In conclusion, the current data fill gaps in pharmacokinetic studies of inhaled cannabis/cannabinoids in mice by including both sexes and evaluating both 11-OH-THC and 11-COOH-THC in plasma and brain. In particular, the results show that both age and mouse strain can influence Δ^9 THC pharmacokinetics, which emphasizes the importance of taking these variables into consideration when evaluating cannabinoid pharmacology in mice. With the growth in research on cannabis therapeutics for neurodegenerative conditions such as Alzheimer's disease, studies utilizing transgenic mice in particular need to consider both genetic background and the age of the animal, especially if modelling a disease not typically occurring in young adults. Additionally, there are robust sex differences in Δ^9 THC metabolism, which is important to consider in cannabinoid studies since these differences are not consistent with some findings in humans and thus may be specific to rodents. Lastly, a 3-cigarette dose resulted in plasma and brain Δ^9 THC concentrations comparable to the 5-cigarette dose, which suggests that the lower dose should be sufficient when studying the effects of cannabis in mice.

Data availability statement

The raw data supporting the conclusion of this article will be made available by the authors, without undue reservation.

Ethics statement

The animal studies were approved by the University of Florida Institutional Animal Care and Use Committee (IACUC). The studies

were conducted in accordance with the local legislation and institutional requirements. No potentially identifiable images or data are presented in this study.

Author contributions

EG led investigation, performed statistical analyses, and wrote the first draft of the manuscript. SZ, ASe, and JH contributed to investigation. ASH, CM, JL, JB, and BS contributed to conceptualization of the study and provided resources and supervision. All authors contributed to the article and approved the submitted version.

Funding

Supported by Florida Department of Health Ed and Ethel Moore Alzheimer's Disease Research Program Award 21A11 (BS, JB, JL, ASH, and CM) and the McKnight Brain Research Foundation (JB).

Acknowledgments

We thank Brandon Hellbusch and Bailey McCracken for assistance with sample collection, and the Drug Supply Program

References

- Ahmed, Z., Sheng, H., Xu, Y. F., Lin, W. L., Innes, A. E., Gass, J., et al. (2010). Accelerated lipofuscinosis and ubiquitination in granulin knockout mice suggest a role for progranulin in successful aging. *Am. J. Pathol.* 177, 311–324. doi:10.2353/ajpath.2010.090915
- Andrenyak, D. M., Moody, D. E., Slawson, M. H., O'Leary, D. S., and Haney, M. (2017). Determination of Δ -9-Tetrahydrocannabinol (THC), 11-hydroxy-THC, 11-nor-9-carboxy-THC and cannabidiol in human plasma using gas chromatography–tandem mass spectrometry. *J. Anal. Toxicol.* 41, 277–288. doi:10.1093/jat/bkw136
- Arkell, T. R., Kevin, R. C., Vinckenbosch, F., Lintzeris, N., Theunissen, E., Ramaekers, J. G., et al. (2022). Sex differences in acute cannabis effects revisited: results from two randomized, controlled trials. *Addict. Biol.* 27, e13125. doi:10.1111/adb.13125
- Azcarate, P. M., Zhang, A. J., Keyhani, S., Steigerwald, S., Ishida, J. H., and Cohen, B. E. (2020). Medical reasons for marijuana use, forms of use, and patient perception of physician attitudes among the US population. *J. Gen. INTERN Med.* 35, 1979–1986. doi:10.1007/s11606-020-05800-7
- Baglot, S. L., Hume, C., Petrie, G. N., Aukema, R. J., Lightfoot, S. H. M., Grace, L. M., et al. (2021). Pharmacokinetics and central accumulation of delta-9-tetrahydrocannabinol (THC) and its bioactive metabolites are influenced by route of administration and sex in rats. *Sci. Rep.* 11, 23990. doi:10.1038/s41598-021-03242-7
- Barnabei, M. S., Palpant, N. J., and Metzger, J. M. (2010). Influence of genetic background on *ex vivo* and *in vivo* cardiac function in several commonly used inbred mouse strains. *Physiol. Genomics* 42A, 103–113. doi:10.1152/physiolgenomics.00071.2010
- Belendiuk, K. A., Baldini, L. L., and Bonn-Miller, M. O. (2015). Narrative review of the safety and efficacy of marijuana for the treatment of commonly state-approved medical and psychiatric disorders. *Addict. Sci. Clin. Pract.* 10, 10. doi:10.1186/s13722-015-0032-7
- Bothe, G. W. M., Bolivar, V. J., Vedder, M. J., and Geistfeld, J. G. (2004). Genetic and behavioral differences among five inbred mouse strains commonly used in the production of transgenic and knockout mice. *Genes. Brain Behav.* 3, 149–157. doi:10.1111/j.1601-183x.2004.00064.x
- Buijzeel, A. W., Knight, P., Panunzio, S., Xue, S., Bruner, M. M., Wall, S. C., et al. (2019). Effects in rats of adolescent exposure to cannabis smoke or THC on emotional behavior and cognitive function in adulthood. *Psychopharmacol. Berl.* 236, 2773–2784. doi:10.1007/s00213-019-05255-7
- Buijzeel, A. W., Qi, X., Guzghva, L. V., Wall, S., Deng, J. V., Gold, M. S., et al. (2016). Behavioral characterization of the effects of cannabis smoke and anandamide in rats. *PLOS ONE* 11, e0153327. doi:10.1371/journal.pone.0153327
- Campan, M. J., Tagaito, Y., Jenkins, T. P., Balbir, A., and O'Donnell, C. P. (2005). Heart rate variability responses to hypoxic and hypercapnic exposures in different mouse strains. *J. Appl. Physiology* 99, 807–813. doi:10.1152/jappphysiol.00039.2005
- Chinwalla, A. T., Cook, L. L., Delehaunty, K. D., Fewell, G. A., Fulton, L. A., Fulton, R. S., et al. (2002). Initial sequencing and comparative analysis of the mouse genome. *Nature* 420, 520–562. doi:10.1038/nature01262
- Fabritius, M., Chtioui, H., Battistella, G., Annoni, J. M., Dao, K., Favrat, B., et al. (2013). Comparison of cannabinoid concentrations in oral fluid and whole blood between occasional and regular cannabis smokers prior to and after smoking a cannabis joint. *Anal. Bioanal. Chem.* 405, 9791–9803. doi:10.1007/s00216-013-7412-1
- Fantauzzi, M. F., Cass, S. P., McGrath, J. J. C., Thayaparan, D., Wang, P., Stampfli, M. R., et al. (2021). Development and validation of a mouse model of contemporary cannabis smoke exposure. *ERJ Open Res.* 7, 00107–02021. doi:10.1183/23120541.00107-2021
- FDA (2018). *Bioanalytical method validation: Guidance for industry*. FDA. Available at: <https://www.fda.gov/regulatory-information/search-fda-guidance-documents/bioanalytical-method-validation-guidance-industry>.
- Grotenhermen, F. (2003). Pharmacokinetics and pharmacodynamics of cannabinoids. *Clin. Pharmacokinet.* 42, 327–360. doi:10.2165/00003088-200342040-00003
- Hartman, R. L., Brown, T. L., Milavetz, G., Spurgin, A., Gorelick, D. A., Gaffney, G., et al. (2015). Controlled cannabis vaporizer administration: blood and plasma cannabinoids with and without alcohol. *Clin. Chem.* 61, 850–869. doi:10.1373/clinchem.2015.238287
- Hložek, T., Uttl, L., Kadeřábek, L., Balíková, M., Lhotková, E., Horsley, R. R., et al. (2017). Pharmacokinetic and behavioural profile of THC, CBD, and THC+CBD combination after pulmonary, oral, and subcutaneous administration in rats and confirmation of conversion *in vivo* of CBD to THC. *Eur. Neuropsychopharmacol.* 27, 1223–1237. doi:10.1016/j.euroneuro.2017.10.037
- Huestis, M. A., Henningfield, J. E., and Cone, E. J. (1992). Blood cannabinoids. I. Absorption of THC and formation of 11-OH-THC and THCCOOH during and after smoking marijuana. *J. Anal. Toxicol.* 16, 276–282. doi:10.1093/jat/16.5.276
- Huestis, M. A. (2007). Human cannabinoid pharmacokinetics. *Chem. Biodivers.* 4, 1770–1804. doi:10.1002/cbdv.200790152
- Hutchison, K. E., Bidwell, L. C., Ellingson, J. M., and Bryan, A. D. (2019). Cannabis and health research: rapid progress requires innovative research designs. *Value Health* 22, 1289–1294. doi:10.1016/j.jval.2019.05.005

at the National Institute on Drug Abuse for providing cannabis cigarettes.

Conflict of interest

The authors declare that the research was conducted in the absence of any commercial or financial relationships that could be construed as a potential conflict of interest.

Publisher's note

All claims expressed in this article are solely those of the authors and do not necessarily represent those of their affiliated organizations, or those of the publisher, the editors and the reviewers. Any product that may be evaluated in this article, or claim that may be made by its manufacturer, is not guaranteed or endorsed by the publisher.

Supplementary material

The Supplementary Material for this article can be found online at: <https://www.frontiersin.org/articles/10.3389/fphar.2023.1227220/full#supplementary-material>

- Iuvone, T., Esposito, G., Esposito, R., Santamaria, R., Di Rosa, M., and Izzo, A. A. (2004). Neuroprotective effect of cannabidiol, a non-psychoactive component from *Cannabis sativa*, on β -amyloid-induced toxicity in PC12 cells. *J. Neurochem.* 89, 134–141. doi:10.1111/j.1471-4159.2003.02327.x
- Karschner, E. L., Schilke, E. W., Lowe, R. H., Darwin, W. D., Pope, H. G., Herning, R., et al. (2009). Do d9-tetrahydrocannabinol concentrations indicate recent use in chronic cannabis users? *Addiction* 104, 2041–2048. doi:10.1111/j.1360-0443.2009.02705.x
- Knapp, A. A., Lee, D. C., Borodovsky, J. T., Auty, S. G., Gabrielli, J., and Budney, A. J. (2019). Emerging trends in cannabis administration among adolescent cannabis users. *J. Adolesc. Health* 64, 487–493. doi:10.1016/j.jadohealth.2018.07.012
- Lee, D., Bergamaschi, M. M., Milman, G., Barnes, A. J., Queiroz, R. H. C., Vandrey, R., et al. (2015). Plasma cannabinoid pharmacokinetics after controlled smoking and ad libitum cannabis smoking in chronic frequent users. *J. Anal. Toxicol.* 39, 580–587. doi:10.1093/jat/bkv082
- Lewis, J., McGowan, E., Rockwood, J., Melrose, H., Nacharaju, P., Van Slegtenhorst, M., et al. (2000). Neurofibrillary tangles, amyotrophy and progressive motor disturbance in mice expressing mutant (P301L) tau protein. *Nat. Genet.* 25, 402–405. doi:10.1038/78078
- Lichtman, A. H., Poklis, J. L., Poklis, A., Wilson, D. M., and Martin, B. R. (2001). The pharmacological activity of inhalation exposure to marijuana smoke in mice. *Drug Alcohol Depend.* 63, 107–116. doi:10.1016/s0376-8716(00)00205-2
- Martin-Moreno, A. M., Brera, B., Spuch, C., Carro, E., García-García, L., Delgado, M., et al. (2012). Prolonged oral cannabinoid administration prevents neuroinflammation, lowers β -amyloid levels and improves cognitive performance in Tg APP 2576 mice. *J. Neuroinflammation* 9, 8. doi:10.1186/1742-2094-9-8
- Martin-Moreno, A. M., Reigada, D., Ramírez, B. G., Mechoulam, R., Innaratoro, N., Cuadrado, A., et al. (2011). Cannabidiol and other cannabinoids reduce microglial activation *in vitro* and *in vivo*: relevance to Alzheimer's disease. *Mol. Pharmacol.* 79, 964–973. doi:10.1124/mol.111.071290
- Matheson, J., Sproule, B., Di Ciano, P., Fares, A., Le Foll, B., Mann, R. E., et al. (2020). Sex differences in the acute effects of smoked cannabis: evidence from a human laboratory study of young adults. *Psychopharmacol. Berl.* 237, 305–316. doi:10.1007/s00213-019-05369-y
- Matsunaga, T., Iwakawa, Y., Watanabe, K., Yamamoto, I., Kageyama, T., Yoshimura, H., et al. (1995). Metabolism of delta 9-tetrahydrocannabinol by cytochrome P450 isozymes purified from hepatic microsomes of monkeys. *Life Sci.* 56, 2089–2095. doi:10.1016/0024-3205(95)00193-a
- Moloney, C., Rayaprolu, S., Howard, J., Fromholt, S., Brown, H., Collins, M., et al. (2018). Analysis of spinal and muscle pathology in transgenic mice overexpressing wild-type and ALS-linked mutant MATR3. *Acta Neuropathol. Commun.* 6, 137. doi:10.1186/s40478-018-0631-0
- Narimatsu, S., Watanabe, K., Yamamoto, I., and Yoshimura, H. (1991). Sex difference in the oxidative metabolism of delta 9-tetrahydrocannabinol in the rat. *Biochem. Pharmacol.* 41, 1187–1194. doi:10.1016/0006-2952(91)90657-q
- Newmeyer, M. N., Swortwood, M. J., Barnes, A. J., Abulseoud, O. A., Scheidweiler, K. B., and Huestis, M. A. (2016). Free and glucuronide whole blood cannabinoids' pharmacokinetics after controlled smoked, vaporized, and oral cannabis administration in frequent and occasional cannabis users: identification of recent cannabis intake. *Clin. Chem.* 62, 1579–1592. doi:10.1373/clinchem.2016.263475
- NIDA (2021). *Cannabis potency data*. U.S. Department of Health and Human Services. Available at: <https://nida.nih.gov/research/research-data-measures-resources/cannabis-potency-data>.
- Penman, S. L., Berthold, E. C., Mihalkovic, A., Hammond, N., McCurdy, C. R., Blum, K., et al. (2023). Vaporized delta-9-tetrahydrocannabinol inhalation in female sprague dawley rats: a pharmacokinetic and behavioral assessment. *Curr. Pharm. Des.* 29, 809. doi:10.2174/1381612829666230419093809
- Poklis, J. L., Thompson, C. C., Long, K. A., Lichtman, A. H., and Poklis, A. (2010). Disposition of cannabichromene, cannabidiol, and Δ^9 -tetrahydrocannabinol and its metabolites in mouse brain following marijuana inhalation determined by high-performance liquid chromatography-tandem mass spectrometry. *J. Anal. Toxicol.* 34, 516–520. doi:10.1093/jat/34.8.516
- Ravula, A., Chandasana, H., Jagnarine, D., Wall, S. C., Setlow, B., Febo, M., et al. (2019). Pharmacokinetic and pharmacodynamic characterization of tetrahydrocannabinol-induced cannabinoid dependence after chronic passive cannabis smoke exposure in rats. *Cannabis Cannabinoid Res.* 4, 240–254. doi:10.1089/can.2019.0049
- Rayaprolu, S., Seven, Y. B., Howard, J., Duffy, C., Altschuler, M., Moloney, C., et al. (2018). Partial loss of ATP13A2 causes selective gliosis independent of robust lipofuscinosis. *Mol. Cell. Neurosci.* 92, 17–26. doi:10.1016/j.mcn.2018.05.009
- Reinhard, C., Eder, G., Fuchs, H., Ziesenis, A., Heyder, J., and Schulz, H. (2002). Inbred strain variation in lung function. *Mamm. Genome* 13, 429–437. doi:10.1007/s00335-002-3005-6
- Ruiz, C. M., Torrens, A., Castillo, E., Perrone, C. R., Cevallos, J., Inshishian, V. C., et al. (2021a). Pharmacokinetic, behavioral, and brain activity effects of Δ^9 -tetrahydrocannabinol in adolescent male and female rats. *Neuropsychopharmacology* 46, 959–969. doi:10.1038/s41386-020-00839-w
- Ruiz, C. M., Torrens, A., Lallai, V., Castillo, E., Manca, L., Martinez, M. X., et al. (2021b). Pharmacokinetic and pharmacodynamic properties of aerosolized (“vaped”) THC in adolescent male and female rats. *Psychopharmacology* 238, 3595–3605. doi:10.1007/s00213-021-05976-8
- Russell, W. M. S., and Burch, R. L. (1959). *The principles of humane experimental technique*. London: Methuen and Co. Ltd. Available at: <https://www.cabdirect.org/cabdirect/abstract/19592204037> (Accessed April 19, 2023).
- Russo, E. B. (2018). Cannabis therapeutics and the future of neurology. *Front. Integr. Neurosci.* 12, 51. doi:10.3389/fnint.2018.00051
- Saenz, S. R., Lewis, R. J., Angier, M. K., and Wagner, J. R. (2017). Postmortem fluid and tissue concentrations of THC, 11-OH-THC and THC-COOH. *J. Anal. Toxicol.* 41, 508–516. doi:10.1093/jat/bkx033
- Santacruz, K., Lewis, J., Spires, T., Paulson, J., Kotilinek, L., Ingelsson, M., et al. (2005). Tau suppression in a neurodegenerative mouse model improves memory function. *Science* 309, 476–481. doi:10.1126/science.1113694
- Sharma, P., Murthy, P., and Bharath, M. M. S. (2012). Chemistry, metabolism, and toxicology of cannabis: clinical implications. *Iran. J. Psychiatry* 7, 149–156.
- Sholler, D. J., Strickland, J. C., Spindle, T. R., Weerts, E. M., and Vandrey, R. (2021). Sex differences in the acute effects of oral and vaporized cannabis among healthy adults. *Addict. Biol.* 26, e12968. doi:10.1111/adb.12968
- Toennes, S. W., Ramaekers, J. G., Theunissen, E. L., Moeller, M. R., and Kauer, G. F. (2008). Comparison of cannabinoid pharmacokinetic properties in occasional and heavy users smoking a marijuana or placebo joint. *J. Anal. Toxicol.* 32, 470–477. doi:10.1093/jat/32.7.470
- Torrens, A., Vozella, V., Huff, H., McNeil, B., Ahmed, F., Ghidini, A., et al. (2020). Comparative pharmacokinetics of d9-tetrahydrocannabinol in adolescent and adult male mice. *J. Pharmacol. Exp. Ther.* 374, 151–160. doi:10.1124/jpet.120.265892
- Turnheim, K. (2003). When drug therapy gets old: pharmacokinetics and pharmacodynamics in the elderly. *Exp. Gerontol.* 38, 843–853. doi:10.1016/s0531-5565(03)00133-5
- Ujváry, I., and Grotenhermen, F. (2014). 11-Nor-9-carboxy- Δ^9 -tetrahydrocannabinol – a ubiquitous yet underresearched cannabinoid. *Lit. rev. Cannabinoids* 9, 1–8.
- U.S. Department of Health and Human Services (HHS) (2021). *Key substance use and mental health Indicators in the United States: results from the 2021 national Survey on drug use and health*. National Survey on Drug Use and Health.
- Walker, A. K., Spiller, K. J., Ge, G., Zheng, A., Xu, Y., Zhou, M., et al. (2015). Functional recovery in new mouse models of ALS/FTLD after clearance of pathological cytoplasmic TDP-43. *Acta Neuropathol.* 130, 643–660. doi:10.1007/s00401-015-1460-x
- Wall, M. E., and Perez-Reyes, M. (1981). The metabolism of delta 9-tetrahydrocannabinol and related cannabinoids in man. *J. Clin. Pharmacol.* 21, 178S–189S. doi:10.1002/j.1552-4604.1981.tb02594.x
- Walter, L., and Stella, N. (2004). Cannabinoids and neuroinflammation. *Br. J. Pharmacol.* 141, 775–785. doi:10.1038/sj.bjp.0705667
- Ward, N. L., Moore, E., Noon, K., Spassil, N., Keenan, E., Ivancov, T. L., et al. (2007). Cerebral angiogenic factors, angiogenesis, and physiological response to chronic hypoxia differ among four commonly used mouse strains. *J. Appl. Physiology* 102, 1927–1935. doi:10.1152/jappphysiol.00909.2006
- Wilson, D. M., Varvel, S. A., Harloe, J. P., Martin, B. R., and Lichtman, A. H. (2006). SR 141716 (Rimonabant) precipitates withdrawal in marijuana-dependent mice. *Pharmacol. Biochem. Behav.* 85, 105–113. doi:10.1016/j.pbb.2006.07.018
- Wong, A., Keats, K., Rooney, K., Hicks, C., Allsop, D. J., Arnold, J. C., et al. (2014). Fasting and exercise increase plasma cannabinoid levels in THC pre-treated rats: an examination of behavioural consequences. *Psychopharmacol. Berl.* 231, 3987–3996. doi:10.1007/s00213-014-3532-3
- Wong, A., Montebello, M. E., Norberg, M. M., Rooney, K., Lintzeris, N., Bruno, R., et al. (2013). Exercise increases plasma THC concentrations in regular cannabis users. *Drug Alcohol Depend.* 133, 763–767. doi:10.1016/j.drugalcdep.2013.07.031
- Yamamoto, I., Watanabe, K., Narimatsu, S., and Yoshimura, H. (1995). Recent advances in the metabolism of cannabinoids. *Int. J. Biochem. Cell. Biol.* 27, 741–746. doi:10.1016/1357-2725(95)00043-0