

University of Groningen

## ASO Visual Abstract

Bokkers, Kyra; Bleiker, Eveline M.A.; Aalfs, Cora M.; van Dalen, Thijs; Velthuisen, Mary E.; Duijveman, Petra; Sijmons, Rolf H.; Koole, Wouter; Schoenmaeckers, Ernst J.P.; Ausems, Margreet G.E.M.

*Published in:*  
Annals of surgical oncology

*DOI:*  
[10.1245/s10434-023-13337-2](https://doi.org/10.1245/s10434-023-13337-2)

**IMPORTANT NOTE:** You are advised to consult the publisher's version (publisher's PDF) if you wish to cite from it. Please check the document version below.

*Document Version*  
Publisher's PDF, also known as Version of record

*Publication date:*  
2023

[Link to publication in University of Groningen/UMCG research database](#)

*Citation for published version (APA):*

Bokkers, K., Bleiker, E. M. A., Aalfs, C. M., van Dalen, T., Velthuisen, M. E., Duijveman, P., Sijmons, R. H., Koole, W., Schoenmaeckers, E. J. P., & Ausems, M. G. E. M. (2023). ASO Visual Abstract: Surgical Oncologists and Nurses in Breast Cancer Care are Ready to Provide Pre-Test Genetic Counseling. *Annals of surgical oncology*, 30(6), 3261-3262. <https://doi.org/10.1245/s10434-023-13337-2>

### Copyright

Other than for strictly personal use, it is not permitted to download or to forward/distribute the text or part of it without the consent of the author(s) and/or copyright holder(s), unless the work is under an open content license (like Creative Commons).

The publication may also be distributed here under the terms of Article 25fa of the Dutch Copyright Act, indicated by the "Taverne" license. More information can be found on the University of Groningen website: <https://www.rug.nl/library/open-access/self-archiving-pure/taverne-amendment>.

### Take-down policy

If you believe that this document breaches copyright please contact us providing details, and we will remove access to the work immediately and investigate your claim.

Downloaded from the University of Groningen/UMCG research database (Pure): <http://www.rug.nl/research/portal>. For technical reasons the number of authors shown on this cover page is limited to 10 maximum.



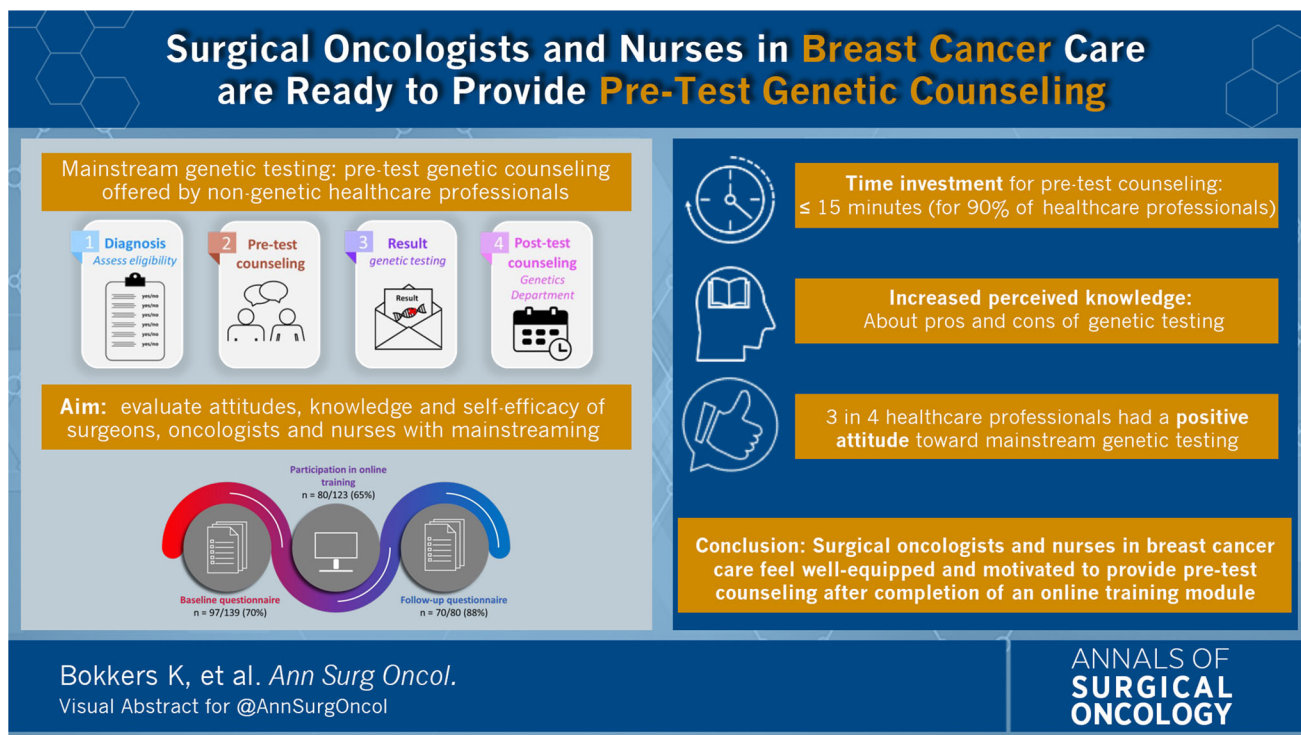
## ASO Visual Abstract: Surgical Oncologists and Nurses in Breast Cancer Care are Ready to Provide Pre-Test Genetic Counseling

**Kyra Bokkers, MD<sup>1</sup>, Eveline M. A. Bleiker, PhD<sup>2,3,4</sup>, Cora M. Aalfs, MD, PhD<sup>1</sup>, Thijs van Dalen, MD, PhD<sup>5</sup>, Mary E. Velthuis, MSc<sup>1</sup>, Petra Duijveman, MSc<sup>1,6</sup>, Rolf H. Sijmons, MD, PhD<sup>7</sup>, Wouter Koole, PhD<sup>1</sup>, Ernst J. P. Schoenmaeckers, MD, PhD<sup>8</sup>, and Margreet G. E. M. Ausems, MD, PhD<sup>1</sup>**

<sup>1</sup>Division Laboratories, Pharmacy and Biomedical Genetics, Department of Genetics, University Medical Center Utrecht, Utrecht, The Netherlands; <sup>2</sup>Division of Psychosocial Research and Epidemiology, The Netherlands Cancer Institute, Amsterdam, The Netherlands; <sup>3</sup>Family Cancer Clinic, The Netherlands Cancer Institute, Amsterdam, The Netherlands; <sup>4</sup>Department of Clinical Genetics, Leiden University Medical Center, Leiden, The Netherlands; <sup>5</sup>Department of Surgery, Diaconessenhuis Utrecht, Utrecht, The Netherlands; <sup>6</sup>Department of Surgery, St. Antonius Hospital, Utrecht, The Netherlands; <sup>7</sup>Department of Genetics, University Medical Center Groningen, University of Groningen, Groningen, The Netherlands; <sup>8</sup>Department of Surgery, Meander Medical Center, Amersfoort, The Netherlands

Breast surgeons and nurse specialists are increasingly offering pre-test genetic counseling to patients with breast cancer, so called mainstream genetic testing. This study (<https://doi.org/10.1245/s10434-023-13229-5>) shows that these non-genetic healthcare professionals have a positive

attitude and sufficient knowledge, and feel confident to provide this care themselves. Moreover, it is feasible for them to incorporate mainstream genetic testing into their routine care.



**DISCLOSURE** The authors have no conflicts of interest to declare.

**Publisher's Note** Springer Nature remains neutral with regard to jurisdictional claims in published maps and institutional affiliations.