



A Vector Error Correction Model (VECM) Approach in Explaining the Relationship between Fixed Investment and Economic Growth in Rural China

By Nsabimana Leonard, Khan Humayun, Zhong Haiyue & Tang Yunjie

Zhejiang Ocean University

Abstract- A rural economy can be affected by fixed investment in a rural area positively or negatively. Investment in fixed assets is one of the core measures of capital spending in rural China and the rural economy is a prominent part of china's national economy. It is important to study the dynamic relationship between fixed investment and economic growth in rural China. Based on time-series data from 1990 to 2016, this paper employed a Vector Error Correction Model (VECM) approach to lead the stationarity test, Cointegration test, stability test, and granger causality test. The result indicated that, in the long term, Fixed Investment fluctuation promotes GDP growth in rural China while GDP fluctuation is not the source of fixed investment increase in rural China.

Keywords: *fixed investment in rural china, rural china, economy in rural china, vector error correction model.*

GJHSS-E Classification: *FOR Code: 149999*



AVECTORERRORCORRECTIONMODELVECMAPPROACHINEXPLAININGTHERELATIONSHIPBETWEENFIXEDINVESTMENTANDECONOMICGROWTHINRURALCHINA

Strictly as per the compliance and regulations of:



A Vector Error Correction Model (VECM) Approach in Explaining the Relationship between Fixed Investment and Economic Growth in Rural China

Nsabimana Leonard ^α, Khan Humayun ^σ, Zhong Haiyue ^ρ & Tang Yunjie ^ω

Abstract- A rural economy can be affected by fixed investment in a rural area positively or negatively. Investment in fixed assets is one of the core measures of capital spending in rural China and the rural economy is a prominent part of china's national economy. It is important to study the dynamic relationship between fixed investment and economic growth in rural China. Based on time-series data from 1990 to 2016, this paper employed a Vector Error Correction Model (VECM) approach to lead the stationarity test, Cointegration test, stability test, and granger causality test. The result indicated that, in the long term, Fixed Investment fluctuation promotes GDP growth in rural China while GDP fluctuation is not the source of fixed investment increase in rural China.

Keywords: fixed investment in rural china, rural china, economy in rural china, vector error correction model.

I. INTRODUCTION

China as the world's most populous country, many of its population is living in rural areas and since the 1980s, it experienced a lot of its population moving from rural areas to cities for a better life which lead to vacating out of the countryside (Futian et al., 1994). To surmount unbalanced development between rural and urban areas, China's central government within recent years has adopted policies oriented towards coordinating what is termed a harmonious economic development of urban and rural areas. Among those policies, the most important issues that need to be settled every year are planned to favor the development of rural areas through countryside investment development projects and infrastructure investment as the engine of rural livelihood improvement and economic growth (Han Wang and Yi Zhuo, 2018). The inequalities of the economy between rural and urban regions in China were high but stable during the centrally planned period. Since the establishment of reforms in 1978, China has experienced over three decades of rapid economic growth, the Swift development of transformation from a pre-industrial to an industrial state and growth of cities has pushed economic development and improved international competitiveness while also deeply influencing its vast rural areas and has affected China's transformations of

regional rural-urban relationships, with also unbalanced between rural and urban areas in income, infrastructures, together with the change in the quick development of rural industries (Yang et al., 2006). Fixed investment in the rural area refers to the investment in infrastructure construction and purchase of productive fixed assets by the individual, Private companies, government, or any sources of Funds for investment in fixed assets state budgetary appropriation, domestic loans, foreign investment, self-raised funds investment in rural areas while. GDP can be broken down into the contribution of each industry or sector of the economy. The ratio of GDP to the total population of the region is the per capita GDP or mean standard of living which is referred to GDP in the rural area of china in our study. Referring to the inequalities in rural and urban areas to both infrastructural development and economic growth, and as china investment in fixed assets is one of the main measures of capital spending to invest in construction projects in both rural and urban areas, this paper has discussed the relationship between fixed investment and economic growth in rural China as an objective of study. It provided an answer to the question assuming that fixed investment promotes economic growth in rural China and provides the size of its effect. Yet, carry the recommendations; in rely on the promotion of coordinated sustainable development of fixed investment and economy in rural China.

II. INDICATOR SELECTION AND DATA SOURCES

Basing on the research of the relationship between fixed investment and economic growth in rural China, this study selected Total Investment of Farm Households in Fixed Assets and Buildings Construction in Rural Area as the index representing the speed of fixed investment in rural China (RFI) and Gross Social output in the rural area (Term used from 1990-1992) and Total output value, intermediate consumption and value-added of agriculture, forestry, animal husbandry and fisheries (Term used from 1993-2016) as the index representing GDP in rural China (RGDP) which also represents China's rural economic growth. The study used time series annual data from 1990 to 2016. All indicators were collected and arranged according to the

Author ^α ^σ ^ρ ^ω: Department of Agricultural promotion (Specialization in Rural and Regional Development), School of Economics and Management, Zhejiang Ocean University, China.
e-mail: nsabimaneleonard123@gmail.com

China Statistical Year Book and China Rural Statistical Year Book, as shown in Figure 1.

RMB 100 Million

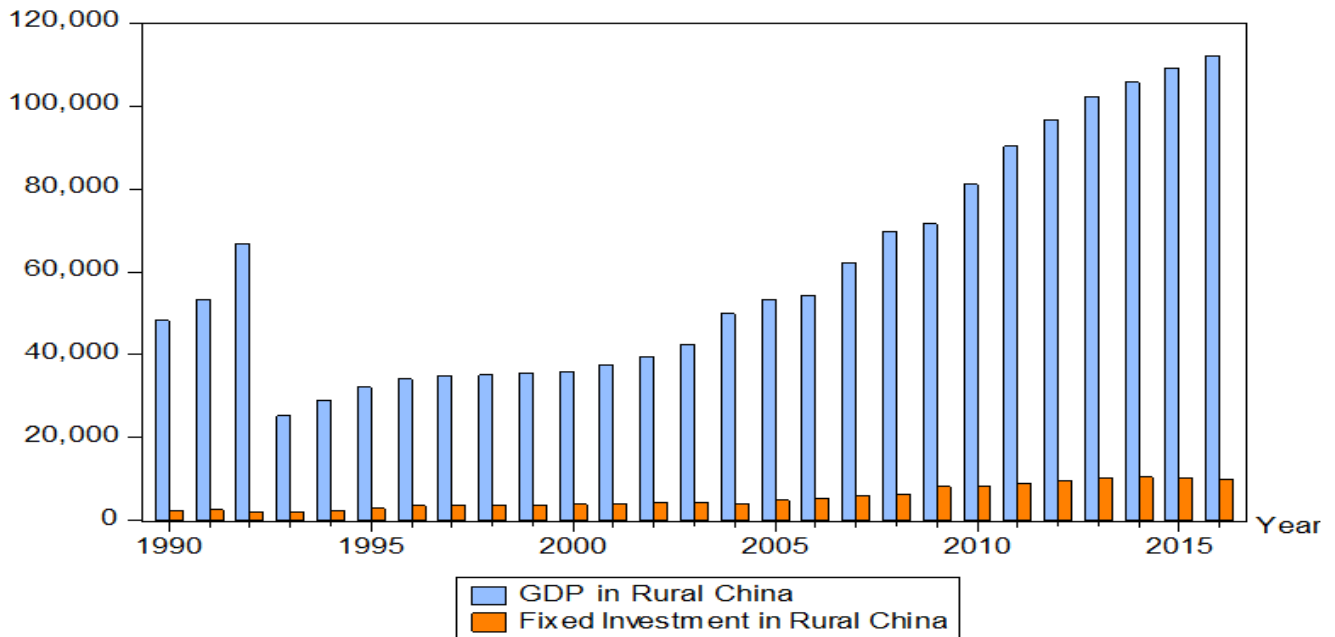


Figure 1: Time Series Plots indicating the comparison of trends of fixed investment and economic growth in rural China

III. STUDY METHODS

The time series variables are non-stationary. If directly making regression to this time series, there will be the problem of spurious regression (Pseudo-regression). To overcome that problem of spurious regression, we firstly used the ADF unit root test to judge whether variables are stationary. If not stationary, it is essential to test whether the variable is single co-integrated and make different processing to make it become a stationary series. So, we make a co-integration test to determine long term relations between variables. The co-integration test needs a Granger causality test. Thus, based on a cointegration test, we

tested granger causality to make further analysis of the relationship between fixed investment and GDP in rural China. We used E Views 8.0 software to perform the statistical analysis and test of related data.

IV. EMPIRICAL TEST AND RESULTS

a) Unit root test

The unit root test is used to test the stationarity of time series variables (Fixed investment and GDP in rural China), ADF (Augmented Dickey-Fuller) test is the common unit root test method for avoiding the problem of spurious regression. If a time series contains a unit root, it is non-stationary.

Table 1: Results of unit root test

| Variable | ADF value | 1% critical value | 5% critical value | 10%critical value | P-value | Conclusion |
|----------|-----------|-------------------|-------------------|-------------------|---------|----------------|
| RGDP | 0.168377 | -3.711457 | -2.981038 | -2.629906 | 0.9649 | Non-stationary |
| dRGDP | -5.726859 | -3.724070 | -2.986225 | -2.632604 | 0.0001 | Stationary |
| RFI | 0.423920 | -3.711457 | -2.981038 | -2.629906 | 0.9801 | Non-stationary |
| d RFI | -3.330422 | -3.724070 | -2.986225 | -2.632604 | 0.0241 | Stationary |

Note: RGDP denotes GDP in rural China, RFI denotes Fixed Investment in rural China and d denotes first-order difference processing of variable series.

The results in Table 1 show that the time series of variables are non-stationary but after their first order difference processing, the series are stationary which means that the original series is a first-order single co-integrated series, I (1).

b) Co-integration Test

The role of co-integration test in Fixed Investment and GDP in rural China is to deal with the economic model using non-stationary time series data and the idea is that if there is a long-run relationship

between Fixed Investment and GDP in rural China, then no matter the changes of the variable over time, there will be a common trend to link them together. The literature indicates that co-integration tests include Engle-granger (1987), Johansen (1988), Johansen and Juselius (1990), Pesaran et al (2001), Sørensen and Katarina(1990), etc. are used to confirm the presence of potential long-run equilibrium relationship between variables. To conduct the co-integration test in this study, we adopted the Johansen methodology.

Johansen's approach derives two likelihood estimators for the co-integration; one is a trace test and a maximum Eigenvalue test. The Co-integration can be formally tested with the trace and the maximum Eigenvalue statistics. After applying the Johansen procedure as shown in Table 2, we note that both the Trace test and Max-eigenvalue test indicate only one vector of co-integration that means a long-term relationship among the level of fixed investment and GDP in Rural China within the period 1990-2016.

Table 2: The estimation of co-integration vectors

Sample (adjusted): 1990- 2016
 Included observations: 24 after adjustments
 Trend assumption: No deterministic trend
 Series: RGDP RFI
 Lags interval (in first differences): 1 to 1
 Unrestricted Cointegration Rank Test (Trace)

| Hypothesized No. of CE(s) | Eigenvalue | Trace Statistic | 0.05 Critical Value | Prob.** |
|---------------------------|------------|-----------------|---------------------|---------|
| None * | 0.559647 | 22.41455 | 12.32090 | 0.0008 |
| At most 1 | 0.107529 | 2.730275 | 4.129906 | 0.1164 |

Trace test indicates 1 cointegrating eqn(s) at the 0.05 level
 Unrestricted Cointegration Rank Test (Maximum Eigenvalue)

| Hypothesized No. of CE(s) | Eigenvalue | Max-Eigen Statistic | 0.05 Critical Value | Prob.** |
|---------------------------|------------|---------------------|---------------------|---------|
| None * | 0.559647 | 19.68428 | 11.22480 | 0.0013 |
| At most 1 | 0.107529 | 2.730275 | 4.129906 | 0.1164 |

Max-eigenvalue test indicates 1 cointegrating eqn(s) at the 0.05 level

Because both trace statistic and Maximum Eigenvalue reject the null hypothesis of no co-integration among variables i.e. Trace Statistic and Maximum Eigenvalue values are more than Critical Value at 5% ($22.41455 > 12.32090$; $19.68428 > 11.22480$) and are significant ($0.0008 < 0.05$, $0.0013 < 0.05$). Since the variables are cointegrated, we then proceed to use the Restricted VAR Model (VECM) and not Unrestricted VAR model in modeling the selected variables.

VECM Model checking which is most important in time series data analysis. The results in table 3 the maximum values from each of the information criteria are shown by a star (*) which indicated the lag optimum is at lag2 by the selection criteria of the AIC, FPE, HQIC, LR, and SBIC. So we preceded further tests with lags (2) and one co-integration between variables. Checking of the VECM model is which helps to check order if the fitted model is appropriate.

c) *Model Estimation*

Determination of optimum lag by comparing every lag to the criteria used is the first step taken in

Table 3: VECM lag order selection

| Lag | LR | FPE | AIC | SC | HQ |
|-----|-----------|-----------|----------|-----------|-----------|
| 0 | - | 1.73e+14 | 38.46113 | 38.56032 | 38.48449 |
| 1 | 95.84936 | 1.61e+12 | 33.78006 | 34.07762 | 33.85016 |
| 2 | 16.20309* | 9.05e+11* | 33.19058 | 33.68650* | 33.30740* |
| 3 | 2.939937 | 1.10e+12 | 33.35822 | 34.05252 | 33.52177 |
| 4 | 1.415685 | 1.50e+12 | 33.61295 | 34.50563 | 33.82324 |
| 5 | 5.355699 | 1.46e+12 | 33.48971 | 34.58075 | 33.74673 |

* indicates lag order selected by the criterion

LR: sequential modified LR test statistic (each test at 5% level)
 FPE: Final prediction error
 AIC: Akaike information criterion
 SC: Schwarz information criterion
 HQ: Hannan-Quinn information criterion

For further Model checking, Roots of Characteristic Polynomial stability condition tests for Model stability test, Breusch-Godfrey Serial Correlation LM Test, Breusch-Pagan-Godfrey of Heteroskedasticity test, and Jarque-Bera test for Normality tests were applied to check for the adequacies of VECM model. The Results from Roots of Characteristic Polynomial stability condition (Fig. 2) below showed that the VECM model satisfies stability conditions since all the roots lie inside the unit circle.

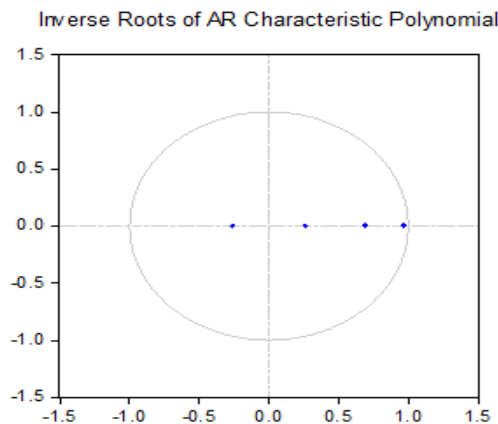


Figure 2: Stability graph for VECM

The results also showed that the null hypothesis of no serial autocorrelation was accepted for the Godfrey LM test for all lags undertaken and the test of heteroskedasticity of data showed that the null hypothesis of no heteroskedasticity meaning that the residuals are homoscedastic was accepted for Breusch-Pagan-Godfrey of Heteroskedasticity test. Hence we

decided that the model has no serial autocorrelation and no Heteroskedasticity. Finally, we tested the normality of the model, and the results (fig. 3) from Histogram residual and the value of the Jarque-Bera test of normality, Null hypothesis (H_0) are rejected for all residuals which indicate that they are all normal.

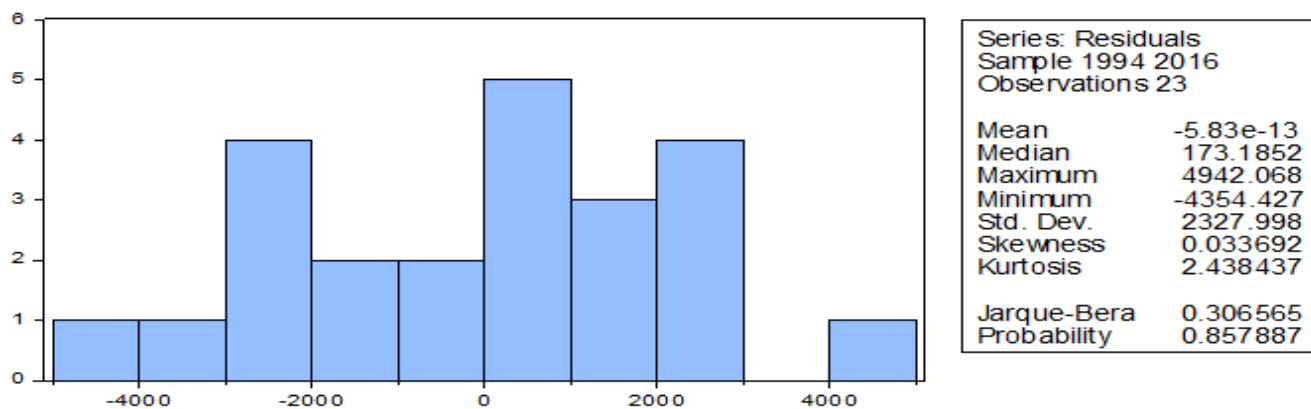


Figure 3: Normality graph for VECM model

d) Granger Causality Analysis

Through difference processing, the above indicators are stationary and have long-term co-integration relations. Then, we carried out a Granger causality test for these variables. The use of the Granger Causality Analysis test suggests a cause and effect relationship between Fixed Investment and GDP in rural China. Here, the results for the analysis of causality are presented and the causality between the variables (if

any) and the direction of the causality of the systems are determined. The results estimate of the test in Table 4 shows that at 5% fixed investment is Granger-causal for GDP, while GDP is not granger cause of fixed investment in rural China. However, there is a unidirectional causality between GDP growth and fixed investment in rural China. The finding implies that fixed investment can promote economic growth in rural China.

Table 4: Results of the Granger causality test

| Null Hypothesis | F-statistics | Probability | Decision |
|---|--------------|-------------|----------|
| RFI does not Granger Cause RGDP | 5.06622 | 0.0172 | Reject |
| RGDP does not Granger Cause RFI reject | 0.06344 | 0.9387 | Do not |

RFI: Fixed Investment in Rural China
RGDP: GDP in Rural China

e) Impulse Response Functions (IRFs)

The performance of Impulse Response Function analysis was used in this study as an additional check of the co-integration test findings and provided information for the long-run relationship between Fixed Investment and GDP in rural China and also provided information to analyze the dynamic

behavior of a variable due to a random shock or innovation in other variables and shows the effects on current and future values of the endogenous variables of one standard deviation shock to a variable. We used Cholesky-dof adjusted type of contemporaneous identifying restrictions to draw a meaningful interpretation as shown in figure 4.

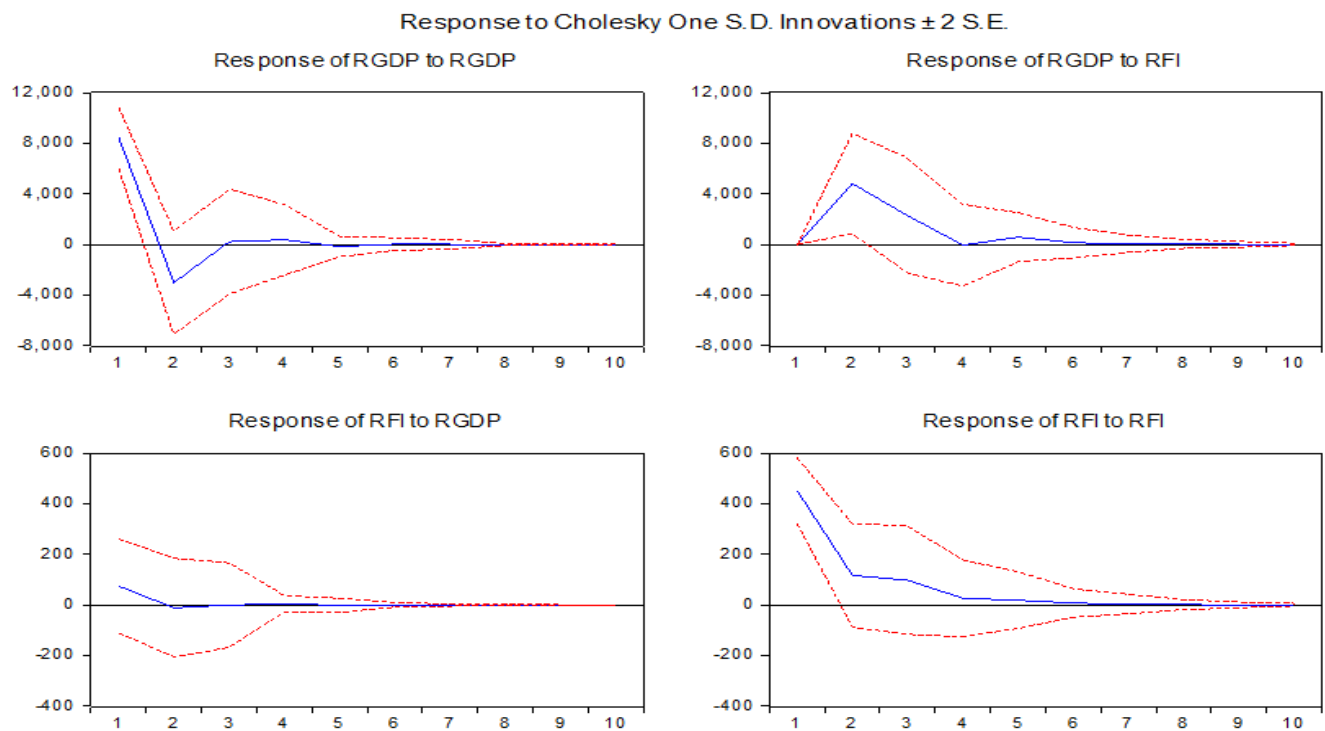


Figure 4

Impulse response functions as shown in the above figure shows that a unit shock of RGDP to RFI creates strong positive fluctuations increasing into the future until 10 years from zero and finally dies off. And the response of RFI to a shock in RGDP also creates positive fluctuations, increasing positively into the future for up to 10 years and also finally dies off. It implies the meaningful reciprocal effect between Fixed Investment and GDP in Rural China with the time.

V. CONCLUSIONS

By the empirical test of the relationship between fixed investment and economic growth in rural china, we concluded that fixed investment promotes economic growth in rural China. There found also a unidirectional causality between GDP growth and fixed investment and

has a long-term relationship in rural China. Thus, to promote fixed investment development to economic growth and to raise the guidance function of developing economy to fixed investment development in rural China, the following recommendations can be proposed for maintaining rural china sustainable development in the future:

Extending financial investment system and improving institutions organization in rural China. The study shows that fixed investment promotes economic growth in rural China. Thus, the Government should focus more on the improvement of capital investment in rural areas invest and local industries to boost domestic production. Improve the allocation of rural investing projects and more focus on the construction of rural

industrial institutions and services which promotes an increase in the total output of rural China.

Enhance rural farming technology, Services, and infrastructure development. It is recommended to guide rural farmers to centralize funds to develop a rural large scale economy by plantation of cash crops to obtain economic benefits and famous brand benefits to boost the rural economy. The government should also help farmers to use better technology and method for farming, reduction of corruption and misbehavior of local government officials and economic assistance to farmers, coordination, and supervision of investment in rural infrastructure development as an investment priority for economic development. Strengthening the cooperation between government, stakeholders, enterprises and private sectors is also a good choice as they respond to the call actively, providing more employment opportunities in the rural areas of China.

Improve countryside revitalization designing measures. The economic development growth through rural fixed investment in rural China also needs to take rural area as a unit to classify different rural areas and urban areas from top to bottom, connect the national and provincial rural revitalization of rural areas, clarifying the spatial structure and designing of township construction, establishment of new governance mechanisms for rural communities and upgrading social security guarantee for rural residents.

Rise of rural output by investing in other rural activities. Even if the study indicated that fixed investment promotes rural economic growth, Taking rural area as a place where is many population living considering to urban area, and considering to the inequalities between rural-urban per Capita income, Investment into Products of agriculture, forestry, fisheries, aquaculture, tourism,... And other rural sectors can affect China's rural economic growth positively. This will not only bring new vitality improvement to the rural population but also relieve urban pressure and contributing to the realization of the Chinese vision for sustainable development.

Abbreviations

VECM: Vector Error Correction Model

GDP: Gross Domestic Product

RFI: Fixed Investment in Rural China

RGDP: GDP in Rural China

ADF: Augmented Dickey-Fuller

I (1): First-order single co-integrated series

No. of CE(s): Number of Cointegrating Equation (s)

LR: sequential modified LR test statistic (each test at 5% level)

FPE: Final Prediction Error

AIC: Akaike Information Criterion

SC: Schwarz information Criterion

HQ: Hannan-Quinn information criterion

Fig. : Figure

H_0 : Null hypothesis

Std. Dev.: Standard Deviation

S.D: Standard Deviation

Declarations:

Ethics approval and consent to participate

Not applicable

Consent for publication

Not applicable

Availability of data

The datasets used during the current study are available from the corresponding author on a reasonable request.

Competing interests

The authors declare that they have no competing interests

Funding

Not applicable

Authors' contributions

Nsabimana Leonard is the First and corresponding author who collected the data, analyzed them during the research, and writing of the manuscript. All co-authors contributed and assisted the researcher in editing the manuscript. The author(s) read and approved the final manuscript.

Acknowledgments

Declared None

REFERENCES RÉFÉRENCES REFERENCIAS

1. Adelman, And C.T.M orris. (1973). *Economic Growth and Social Equity In Developing Countries*. Stanford CA: Stanford University Press.
2. A. Hatemi and M. Irandoust. (2002). *Investigating causal relations between fixed investment and economic growth*. *Economia Internazionale/ International Economics*, Vol. 55, No. 1, pp. 25-35.
3. Arias, J.E., J.F. Rubio-Ram_rez, and D.F. Waggoner. (2018). *Inference based on SVATs identified with a sign and zero restrictions: theory and application*. "Econometrica, 86, 685-720.
4. Arellano, M., and O. Bover. (1995). "Another Look at the Instrumental Variables Estimation of Error-Component Models." *Journal of Econometrics* 68(1) 29-51.
5. Baillie, R.T. (1996). *Long Memory processes and Fractional Integration in Econometrics*, "Journal of Econometrics, 73, 5{59}.
6. Bouton, Lawrence, and Mariusz A. Sumlinski. (2000). *Trends in Private Investment in Developing Countries*. Statistics for 1970-1998" IFC Discussion Paper 41. Washington, D.C.

7. Borenstein De Gregorio, J, and Lee, J. (1998). *How does a foreign direct investment affect economic growth?*, Journal of International Economics, 45, 115-135.
8. Bose, N., Haque, M.E., Osborn, D. R. (2007). *Public Expenditure and Economic Growth: A disaggregated analysis for developing countries*. The Manchester School. 75, 533-56.
9. Blomstoerm, M., Lipsey, R., Zejan, M. (1994). *What explains the growth of developing countries? The convergence of Productivity*. Oxford University Press, Oxford.
10. Blejer, Mario, and Mohsin Khan. (1984). *Government Policy and Private Investment in Developing Countries*. IMF Staff Papers 31, no. 2, pp. 379-403. Washington, D. C.
11. Canning D., Pedroni P. (2008). *Infrastructure, long-run economic growth, and causality tests for cointegrated panels*. The Manchester School, 76(5), 504-527.
12. China National Bureau of Statistics (CNBS), various years. (2019). *China Statistical Yearbook*. Beijing: China Statistical Press.
13. Chong S and E Poole. (2013). *Financing Infrastructure: A Spectrum of Country Approaches*. RBA Bulletin, pp 65-76.
14. Cheng, N. (2004). *Smallholder economy in Chinese history: Production and life*. Historical review, 342-55.
15. Chen, Naixing. (1999). *The Focal Point of Economic Development and Re-employment*. Jingji went (Economic Problems), No. 2, 1999, pp. 8-11.
16. Christiano, L.J., M. Eichenbaum, and R. Vigfusson. (2006). *Alternative procedures for Estimating Vector Autoregressions Identified with Long-Run restrictions*. Journal of the European Economic Association, 4, 475-483.
17. Dong, Furen, ed. (1999). *An Economic History of the People's Republic of China*. 2 vols. Beijing: Economic Science Publishers. 董福恩, 中人民共和國史上下, (北京: 科学出版社).
18. De Long, J. B., & Summers, L. H. (1991). *Equipment investment and economic growth*. The Quarterly Journal of Economics, CVI, 445-502.
19. De Long, J. B., & Summers, L. H. (1993). *How strongly do developing economies benefit from equipment investment?* Journal of Monetary Economics, 32, 395-415.
20. De Long, J. B., Summers, L. H., & Abel, A. B. (1992). *Equipment investment and economic growth: how strong is the nexus*. Brookings Papers on Economic Activity, 2, 157-211.
21. Easterly, W., and Rebelo, S. (1993). *Fiscal policy and Economic Growth: An empirical investigation*. Journal of Monetary Economics, 32, 417-458
22. Engle & Granger. (1987). *Co-integration and error correlation: representation, estimation, and testing*. Econometrica, 55,257-276.
23. Findlay, R., 1978. Relative backwardness, direct foreign investment, and the transfer of technology: a simple dynamic model. Quarterly Journal of Economics 92, 1-16.
24. Fu, X. and V.N. Balasubramanyam. 2003. Township and Village Enterprises in China. The Journal of Development Studies, 39: 4, 27-46.
25. Gao, Shangquan. (1992). *China's Urban System Reforms*. In 1992 Almanac of China's Economy, ed. Muqiao Xue et al. Beijing: Economic Management Publishing House. 高尚全, "中国的城市体制改革," 在薛暮 1992, 45叶.
26. Granger. (1980). *Testing for causality. A personal viewpoint*. Journal of economic dynamic and control, 2(4), 329-352.
27. Granger (1981). *Some properties of time series data and their use in econometric model specification*. Journal of econometrics, 23: 121-130.
28. Greene, Joshua, and Delano Villanueva. (1991). *Private Investment in Developing Countries: An Empirical Analysis*. IMF Staff Papers 38(1): 33-58. Washington, D.C.
29. Johansen, S (1988). *Statistical Analysis of Cointegration Vectors*. Journal of Economic Dynamics and Control, 12, 231 - 254.
30. Johansen (1992). *Representation of vector autoregressive processes integrated of order 2*. Econometric Theory, 8:188-202.
31. Han, Wenxiu. (1995). *An Analysis of China's Investment Rate Since Reform*. Jingji yanjiu (Economic Research), No. 8, 1995, pp. 3-8.
32. He, Dong, Wenlang Zhang, and Jimmy Shek. (2007). *How Efficient Has Been China's Investment? Empirical Evidence From National And Provincial Data*. Pacific Economic Review 12: 597-617.
33. Hannan & Quinn. (1979). *The determination of the order of an Autoregression*. Journal of the royal statistical society, Series B, 41: 190-195.
34. International Finance Cooperation. (2000). *Statistics for 1970-98, Trends in Private Investment in Developing Countries*. IFC Discussion Paper No: 41.
35. Kónya & Singh. (2006). *Exports, imports, and economic growth in India*. La Trobe University, School of the business discussion paper, series A, no. 06. 06:23.
36. Knack, S., Keefer, P. (1995). *Institutions and economic performance: cross-country tests using alternative institutional measures*. Economics and Politics 7, 207-227.
37. Knight, M., Loyaza, N., and Villanueva, D. (1993). *Testing the neoclassical theory of economic growth*. IMF Staff Papers, 40, 512-541.

38. Khan, M, and Kumar, M. (1997). *Public and private investment and the growth process in developing countries*. Oxford Bulletin of Economics and Statistics, 59, 69-88.
39. Kwiatkowski et al., (1992). *Testing the null hypothesis of stationarity against the alternative of a unit root: How sure are we that economic time series have a unit root?* Journal of Econometrics, 54. p. 159-178.
40. Li, Shi (ed.). (2008). *Zhongguo Jumin shouru fenpai yanjiu (Research on income distribution in China)*. Beijing: Beijing Normal University Press.
41. Li Shi, Zhao Renwei. (1994). *The research on the residents' income distribution in China*, Economy. 41(1): 227-244
42. Liang, Xiaoyan, and Shuang Chen. (2013). *Developing Skills for Economic Transformation and Social Harmony in China: A Study of Yunnan Province*. Washington, DC: World Bank. <https://openknowledge.worldbank.org/handle/10986/16197>
43. Looney, Robert E., and Peter C. Frederiken. (1997). *Government Investment and Follow-on Private Sector Investment in Pakistan, 1972-1995*. Journal of Economic Development 22(1):91-100.
44. Lopes, Jorge, Les Ruddock, and Francisco Loforte Ribeiro. (2002). *Investment in construction and economic growth in developing countries*. Building Research & Information 30: 152–59. DOI: 10.1080/09613210110114028
45. Levine, R. (1997). *Financial development and economic growth: views and agenda*. Journal of Economics. Literature, vol. 35, No. 2, Nashville, Tennessee, American Economic Association.
46. Maddison, Angus, and Harry X. Wu. (2007). *China's Economic Performance: How Fast has GDP Grown; How Big it is Compared with the USA?* Paper prepared for the Hitotsubashi University Institute of Economic Research Workshop on China's Industrial Structure and Economic Growth: A Historical Perspective. September 27, 2007.
47. Moudatsou, A. (2003). *Foreign direct investment and economic growth in the European Union*. Journal of Economic Integration, 18(4), 689-707
48. Oshikoya, Temitope W. (1994). *Macroeconomic Determinants of Domestic Private Investment in Africa: An Empirical Analysis*. Economic Development and Cultural Change 42(3):573-96.
49. Ozkana, Filiz, Omer Ozkanb, and Murat Gunduzc. (2012). *The causal relationship between construction investment policy and economic growth in Turkey*. Technological Forecasting and Social Change 79: 362–70. DOI:10.1016/j.techfore.2011.04.007.
50. Podrecca, Elena, and Gaetano Carmeci. (2001). *Fixed Investment and Economic Growth: New Results on Causality*. Applied Economics 33(2): 177-182.
51. Perkins, Dwight H. (1975). *Growth and Changing Structure of China's Twentieth Century Economy*. In Dwight H. Perkins, editor, *China's Modern Economy in Historical Perspective* (Stanford: Stanford University Press) pp. 115-165.
52. Tong Zhihui et al., (2005). *Rural NGOs and the Development of Rural China*. Beijing: Social Sciences Academic Press (China).
53. Silka, Dmitriy N. (2017). *Development of Organizing and Economic Measures for Monitoring the Cost of Construction Resources*. MATEC Web of Conferences 106: 08042. DOI:10.1051/mateconf/201710608042.
54. Sims et al., (1980). *Inference in linear time series models with some unit-roots*. Econometrica, 58, pp.113.
55. Sanchez-Robles B. (1998). *Infrastructure Investment and Growth: Some Empirical Evidence*. Contemporary Economic Policy, 16, 98–108
56. Scott Rozelle. (1994). *Rural Industrialization and Increasing Inequality: Emerging Patterns in China's Reforming Economy*. Journal of Comparative Economics 19 362–91.
57. Song, Z., K. Storesletten, and F. Zilibotti. (2011). *Growing Like China*. American Economic Review, 101, 196{233.
58. Qin, Duo, Marie Anne Cagas, Pilipinas Quising, and Xin-Hua He. (2006). *How much does investment drive economic growth in China?* Journal of Policy Modeling 28: 751–74. DOI:10.1016/j.jpolmod.2006.02.004.
59. Rawski, Thomas G. (1980). *China's Industrial Performance, 1949-1973*. In Alexander Eckstein ed., *Quantitative Measures of China's Economic Output* (Ann Arbor: University of Michigan Press, 1980), pp. 108-193.
60. Rawski, Thomas G. (2001). *What Is Happening to China's GDP Statistics?* China Economic Review 12.4: pp. 347-354.
61. World Bank. (2002). *Private Sector Development Strategy Directions for the World Bank Group*. 9 April 2002.
62. Xing, L., S. Fan, X. Luo, and X. Zhang. (2009). *Community Poverty and Inequality in Western China: A Tale of Three Villages in Guizhou Province*. China Economic Review 20 (2): 338–349.
63. Xu, Meng, Susan Grant-Muller, and Ziyou Gao. (2015). *Evolution and assessment of economic regulatory policies for expressway infrastructure in China*. Transport Policy 41: 42–49. DOI: 10.1016/j.tranpol.2015.03.007.
64. Young, Alwyn. (2003). *Gold into Base Metals: Productivity Growth in the People's Republic of*

- China during the Reform Period*. Journal of Political Economy, 111 (December 2003), 1220-1261.
65. Yao YJ. (2004). *Rural financial development and economic growth in China. an empirical analysis [J]*. Economic science, (5): 24-31.
66. Yoo & Engle. (1987). *Forecasting and Testing in the co-integrated system*. Journal of econometrics, 35:143-159
67. Yang, J., Z. Huang, X. Zhang, and T. Reardon. (2013). *The Rapid Rise of Cross-Regional Agricultural Mechanization Services in China*. American Journal of Agricultural Economics (Paper and Proceedings), 1-7. October 2013.
68. Yang Z H, Shi L. (2014). *The strategy prepares for Chinese new urbanization*. Journal of Management, 27(2): 28–34.(in Chinese)
69. Zhang, H. (1999). *FDI and economic growth: evidence from ten East Asian Economies*. *Economia Internazionale*, 7(4), 517-535.
70. Zhen Peiyian, ed. (1999). *Xin Zhongguo jingji 50 nian 1949–99 (New China's Economy in the Last Fifty Years, 1949–1999)*. China Planning Publishing House, Beijing.
71. Zheng, S., F. Long, C.C. Fan, and Y. Gu. (2009). *Urban village in China: A 2008 Survey of Migrant settlement in Beijing*. *Eurasian Geography and Economics*. 50 (4:): 425-446.

