

GLOBAL JOURNAL OF HUMAN-SOCIAL SCIENCE: B  
GEOGRAPHY, GEO-SCIENCES, ENVIRONMENTAL & DISASTER  
MANAGEMENT

Volume 14 Issue 8 Version 1.0 Year 2014

Type: Double Blind Peer Reviewed International Research Journal

Publisher: Global Journals Inc. (USA)

Online ISSN: 2249-460X & Print ISSN: 0975-587X

## Climate Change is Human Induced?

By Ashutosh Mishra

*Abstract-* Climate is the most vital element of our planet and its live ability is key concern for every habitat. From Silent Spring till present debate is on about humankind's impact on nature. Since its establishment in 1988, the Intergovernmental Panel on Climate Change (IPCC) has been playing pivotal role in raising public concerns on human-induced climate change through its various assessment reports. These reports follow exhaustive review process, and are widely accepted.

In 2007, IPCC's 4<sup>th</sup> assessment report- 'Climate Change 2007 – Impacts, Adaptation and Vulnerability' came in question on Himalayan glacier melt. The Climate gate in 2009 further strengthened the confusion on credibility of IPCC's projections. Present study analyses district level temperature and rainfall patterns of Uttarakhand- a Himalayan state, and examines the validity of IPCC's projection.

Uttarakhand is a tourism oriented economy. State is best known for its religious places and natural sites. Rapid urbanisation in mountainous regions is disturbing regional eco-balance, but increasing vehicular pollution in climatesensitive areas seems to have greater impact on temperature and precipitation patterns. Result shows a noticeable shift in the variability of temperature and rainfall, and a significant warming especially in mountainous districts, However human activities does not correlate very well with these changes.

*Keywords:* climate-sensitive sectors, monsoon, climatic variability, polar caps, vehicular pollution.

*GJHSS-B Classification :* FOR Code: 040104



*Strictly as per the compliance and regulations of:*



# Climate Change is Human Induced?

Ashutosh Mishra

**Abstract-** Climate is the most vital element of our planet and its live ability is key concern for every habitat. From Silent Spring till present debate is on about humankind's impact on nature. Since its establishment in 1988, the Intergovernmental Panel on Climate Change (IPCC) has been playing pivotal role in raising public concerns on human-induced climate change through its various assessment reports. These reports follow exhaustive review process, and are widely accepted.

In 2007, IPCC's 4<sup>th</sup> assessment report- '*Climate Change 2007 – Impacts, Adaptation and Vulnerability*' came in question on Himalayan glacier melt. The Climate gate in 2009 further strengthened the confusion on credibility of IPCC's projections. Present study analyses district level temperature and rainfall patterns of Uttarakhand- a Himalayan state, and examines the validity of IPCC's projection.

Uttarakhand is a tourism oriented economy. State is best known for its religious places and natural sites. Rapid urbanisation in mountainous regions is disturbing regional eco-balance, but increasing vehicular pollution in climate-sensitive areas seems to have greater impact on temperature and precipitation patterns. Result shows a noticeable shift in the variability of temperature and rainfall, and a significant warming especially in mountainous districts. However human activities does not correlate very well with these changes.

**Keywords:** climate-sensitive sectors, monsoon, climatic variability, polar caps, vehicular pollution.

## I. INTRODUCTION

India is considered highly vulnerable to climate change, not only because of high physical exposure to climate-related disaster, but also because of the dependency of its economy and majority of population on climate-sensitive sectors (e.g. agriculture, forests, tourism, animal husbandry and fisheries). More than 40 million hectares of India (12 per cent of land) is prone to floods and river erosion; of the 7,516 km long coastline, close to 5,700 km is prone to cyclones and tsunamis; 68 per cent of the cultivable area is vulnerable to drought and hilly areas are at risk from landslides and avalanches (NDMA, 2007). The country has a unique climate system dominated by the monsoon, and the major physiographic features that drive this monsoon are its location in the globe, the Himalayas, the Central Plateau, the Western and Eastern Ghats and the oceans surrounding the region.

The Himalayas influence the climate of the Indian subcontinent by sheltering it from the cold air mass of Central Asia. The range also exerts a major influence on monsoon and rainfall patterns. They prevent frigid and dry arctic winds from blowing south into the subcontinent keeping South Asia much warmer

when compared to regions located between corresponding latitudes throughout the globe.

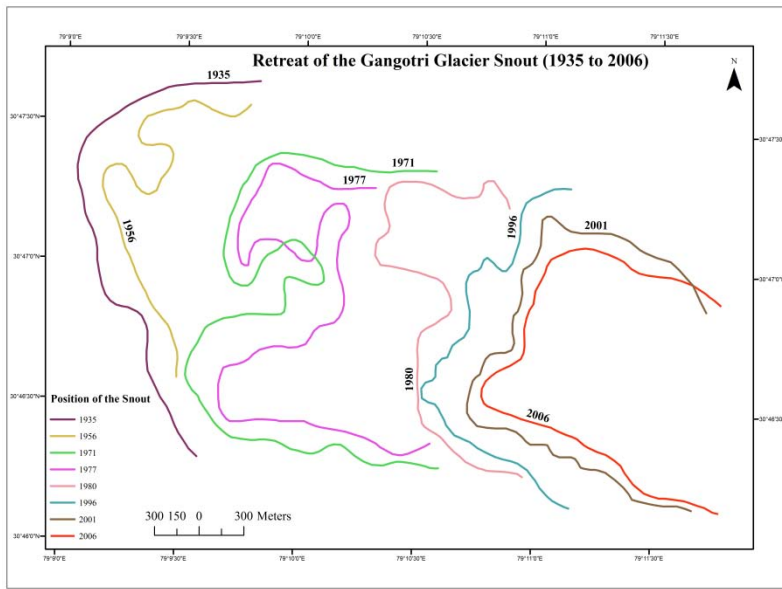
Himalayan glaciers cover about three million hectares or 17 per cent of the mountain area. They form the largest body of ice outside the polar caps and are the source of water for the innumerable rivers that flow across the Indo-Gangetic plains. About 15,000 Himalayan glaciers form a unique reservoir which supports perennial rivers such as the Indus, Ganga and Brahmaputra which, in turn, are the lifeline of millions of people in South Asian countries (Pakistan, Nepal, Bhutan, India and Bangladesh). The Gangetic basin alone is home to 500 million people, about 10 per cent of the total human population in the region.

The Himalayan ecosystem is highly vulnerable to the stress caused by increased pressure of population, exploitation of natural resources and other related challenges. Climate change may adversely impact the Himalayan ecosystem through increased temperature, altered precipitation patterns, and episodes of drought. According to IPCC's 4<sup>th</sup> assessment report "*glaciers in the Himalaya are receding faster than in any other part of the world and, if the present rate continues, the likelihood of them disappearing by the year 2035 and perhaps sooner is very high if the Earth keeps warming at the current rate. Its total area will likely shrink from the present 500,000 to 100,000 km<sup>2</sup> by the year 2035*" (Cruz et al, 2007).

Syed Iqbal Hasnain, India's well-known Glaciologist, observes that "*The Ganga system is about 60 to 70 per cent snow and ice. There are more than 800 glaciers in the Ganga basin. The Gangotri is the big one. It used to cover more than 250 square kilometers, but now it's breaking up in many places. You will see blocks of dead ice that are no longer connected to the main ice body. I'm afraid that if the current trends continue, within 30 or 40 years most of the glaciers will melt out*" (Black 2009).

Contrary to Hasnain's view, a white paper on the status of Himalayan glaciers and global warming by V.K. Raina, former Deputy Director General of the Geological Survey of India, suggests that "*in most cases glaciers have stopped retreating. While the Gangotri glacier stopped receding in the 2007-09 period, glaciers like Pindari in Kumaon continue to record a high annual retreat of almost 10 metres annually*". He further states that "*The glaciers are undergoing natural changes, witnessed periodically*" (Raina, 2010:7). According to assessments made during 1935-2006 by the Geological Survey of India, the Gangotri region has not shown any evidence of major retreat (Fig. 1).

*Author: e-mail: ashutoshkmisra@gmail.com*



*Figure 1 :* Retreat of the Gangotri glacier snout. (1935 to 2006 based on maps made by the Geological Survey of India)

A glacier is affected by a range of physical features and a complex interplay of climatic factors. Establishing change in climate of the Himalayan region on the basis of movement of glaciers, and attributing this change to human activities without analysing the local climate variability, departures and level of human interference does not seem reliable.

Present work is an attempt to identify anthropogenic influence over natural climatic variability of the Himalayan region by considering Uttarakhand as the case of study. The data has been collected from Census of India, India Meteorological Department, Survey of India and Geological Survey of India, and simple correlation and regression techniques have been used for analysis of temperature and rainfall patterns.

Uttarakhand is a part of the Indian Himalayan region (Fig. 2). Owing to its immense natural beauty, rich biological succession and India's great rivers feeding glaciers- Gangotri, Pindari, Milam, Pindari etc., the region is regarded as Devbhumi- abode of Gods, and Tapobhumi- land of asceticism in Indian scriptures.

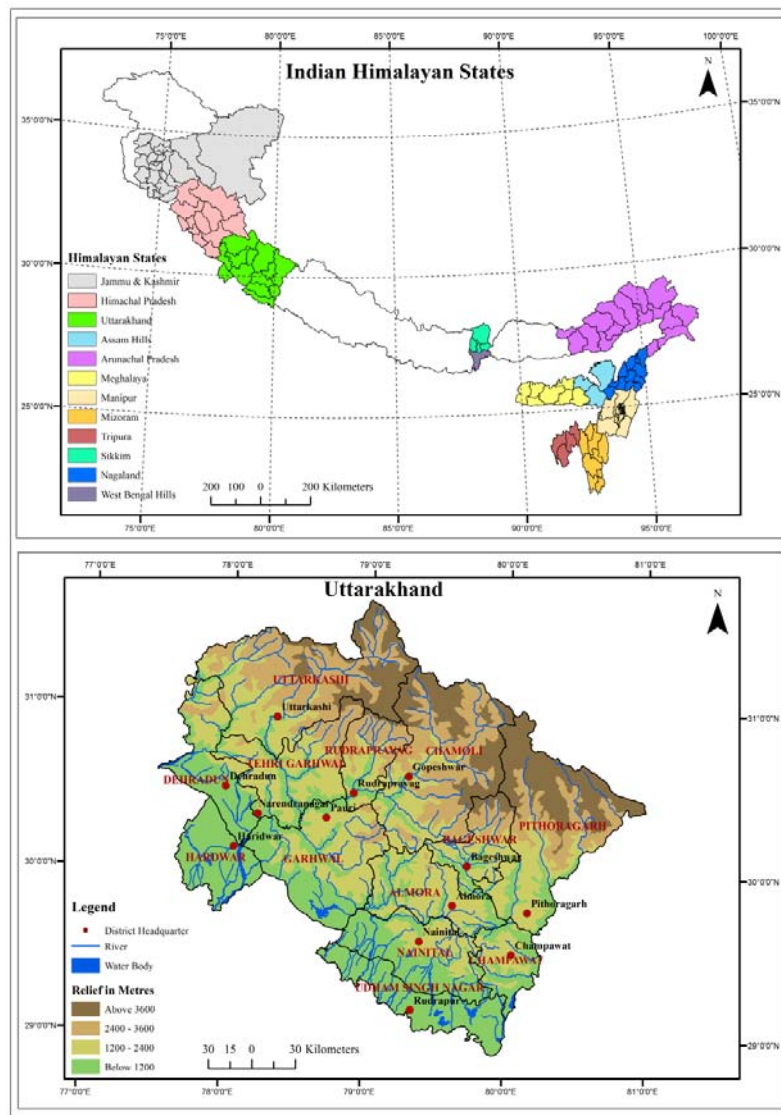


Figure 2 : Location map of Uttarakhand

The northern region of the state is part of the Great Himalayan Range, covered in snow and glaciers. Two of the Indian subcontinent's most important rivers—the Ganga and the Yamuna—also originate from the glaciers of Uttarakhand. The natural resources of the region provide life supporting, provisioning, regulating, and cultural 'eco-system' services to millions of local as well as downstream people. The state lies between the longitudes  $77^{\circ}34'-81^{\circ}02'E$  and latitudes  $28^{\circ}43'-31^{\circ}27'N$  having a maximum dimension of east-west 310 km. and north-south 255 km. It covers an area of 53,484 km<sup>2</sup> with the elevation ranging from 210 to 7817 mt. The state shares border with China (Tibet) in the North and Nepal in the East and inter-state boundaries with Himachal Pradesh in the West, Northwest and Uttar Pradesh in the South. Broadly the region constitutes of 13 districts falling in two major administrative unit viz., Garhwal (northwest portion) and Kumaon (southeast portion).

The climate of Uttarakhand is temperate, marked by seasonal variations in temperature but also

affected by tropical monsoons. January is the coldest month, with daily high temperatures averaging below freezing in the north and near 21 °C in the southeast. In the north, July is the hottest month, with temperatures typically rising from 7 °C to about 21 °C daily. In the southeast, May is the warmest month, with daily temperatures normally reaching the high around 38 °C from a low around 27 °C. Most of the state's roughly 1,500 mm of annual precipitation is brought by the southwest monsoon, which blows from July through September.

## II. RECENT CLIMATE TREND

Although climate represents a set of factors and determinants showing long term averaged state of the atmosphere over a region but temperature and rainfall are the two most prominent elements among them. Present study examines trends of rainfall and temperature at annual and monthly time scales for the

periods of 1911-2012 to understand the climatic variability of the region.

Uttarakhand has two physiographic zones- montane and non-montane. The mountainous regions

have recorded more significant warming and declining rainfall trend, while Hardwar, which is almost plain, noticed positive rainfall trend (Table 1).

Table 1 : Regression result for temperature and rainfall patterns

S. No.	District	Correlation between temperature and time series (r)	Regression result for temperature series		Correlation between rainfall and time series (r)	Regression result for rainfall series	
			R <sup>2</sup>	F		R <sup>2</sup>	F
1	Almora	0.266	0.071	7.598**	-0.209	0.044	4.579*
2	Bageshwar	0.299	0.089	9.826**	-0.221	0.049	5.125*
3	Chamoli	0.315	0.099	10.984**	-0.184	0.034	3.515
4	Champawat	0.291	0.085	9.246**	-0.242	0.058	6.211*
5	Dehradun	0.232	0.054	5.694*	-0.035	0.001	0.125
6	Garhwal	0.247	0.061	6.515*	-0.122	0.015	1.503
7	Haridwar	0.221	0.049	5.124*	0.023	0.001	0.051
8	Nainital	0.260	0.068	7.254**	-0.201	0.041	4.229*
9	Pithoragarh	0.342	0.117	13.250**	-0.236	0.056	5.919*
10	Rudraprayag	0.308	0.095	10.514**	-0.153	0.023	2.404
11	Tehri Garhwal	0.263	0.069	7.435**	-0.114	0.013	1.311
12	UdhamSingh Nagar	0.260	0.068	7.275**	-0.164	0.027	2.769
13	Uttarkashi	0.308	0.095	10.455**	-0.103	0.011	1.075

\*\* :  $p < 0.01$ , \* :  $p < 0.05$

It is evident that the temperature and rainfall departures from centennial average are significantly high in higher altitudes (Fig. 3).

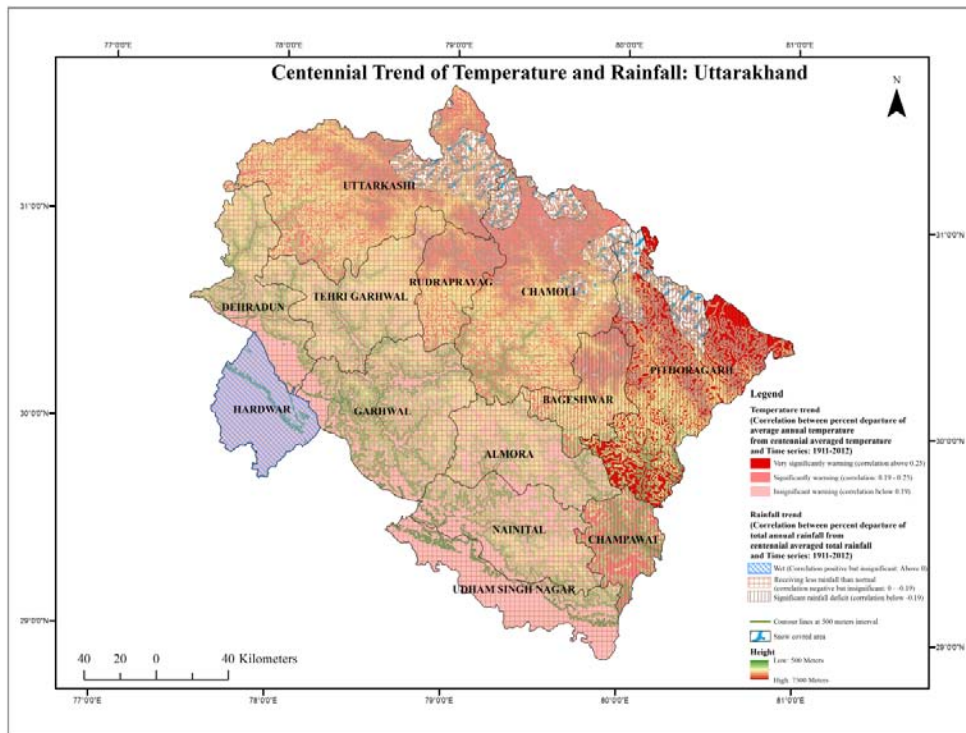


Figure 3 : Temperature and rainfall trend of Uttarakhand

Data shows four distinct phases of temperature patterns during the last century- no warming or cooling up to 1950, warming trend during 1950-1080, cooling trend between 1980-2000 and again warming after

2000. On the other hand the rainfall patterns recorded no significant shift from natural variability at centennial scale (1911-2012) (Fig. 4).

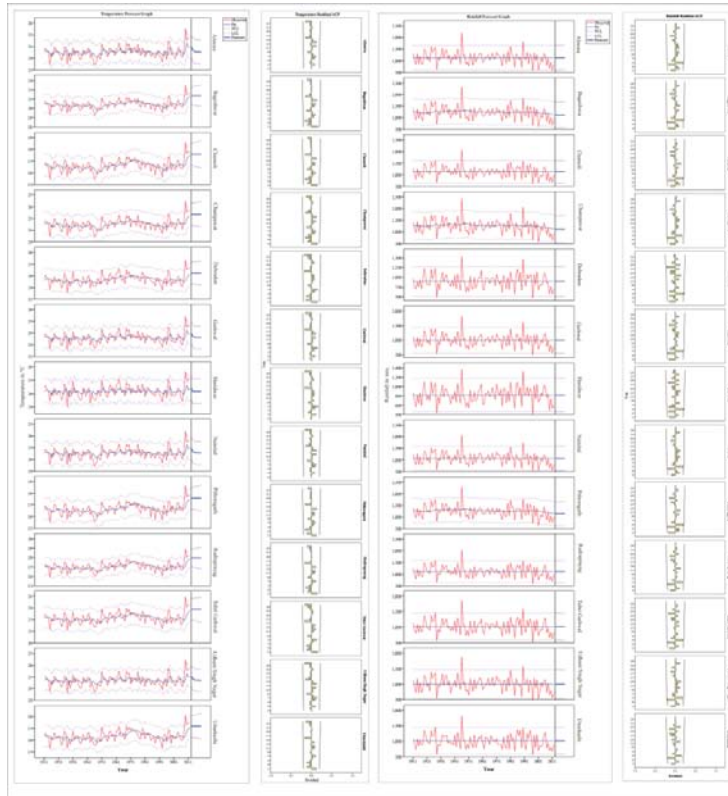


Figure 4 : District level temperature and rainfall forecast graph for Uttarakhand

Analysis of monthly average temperature data shows very striking results. Colder months- January, February, November and December, have recorded significant warming while the hottest months- June, July, August and September, have shown cooling trend. The study area receives most of its rainfall during the months

of July and August but during last century (1911-2011), these months have recorded declining precipitation trend. The months of March and May on the other hand have received more rainfall than normal (Fig. 5). Interestingly the districts of non-montane physiographic zone have shown lowest departures.

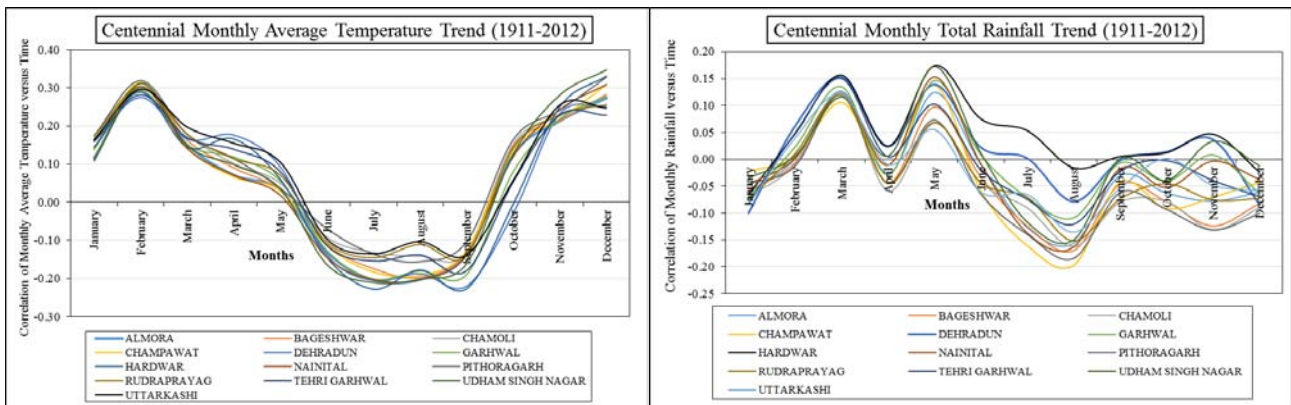


Figure 5 : District level centennial monthly temperature and rainfall trend of Uttarakhand

(Correlation values above 0.19 are significant and above 0.25 are highly significant)

The state has recorded a continuous growth in population during the last century except in 1921-31, however the urban population has grown at faster rate.

Most of the population lives in the lower districts where urban share is high (Fig. 6).

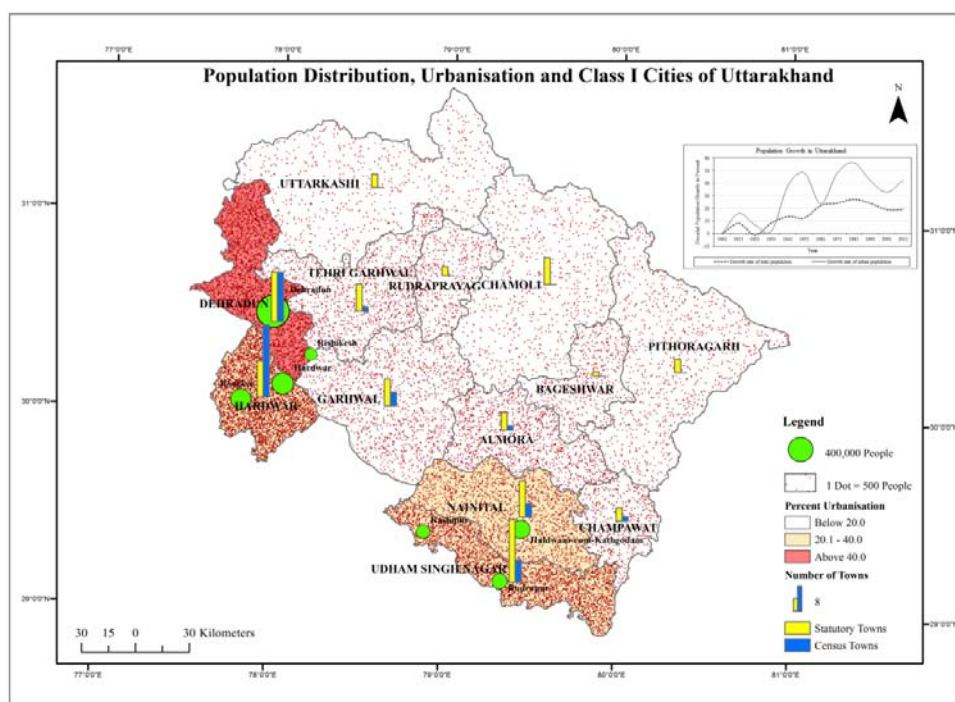


Figure 6 : Population distribution in Uttarakhand

Hardwar and Dehradun districts record the highest population and percent urbanisation, and have the highest number of census towns (Table 2). These two districts have noticed less warming than others.

Contrary to other districts, Hardwar has recorded an increasing rainfall trend although this trend is insignificant. Evidently urbanisation holds no significant association with temperature and rainfall trends.

Table 2 : Urbanisation in Uttarakhand

S. No.	District	Total Population	Percent Urbanisation	Statutory Towns	Census Towns	Village
1	Almora	621927	10.02	4	1	2289
2	Bageshwar	259840	3.5	1	0	947
3	Chamoli	391114	15.11	6	0	1246
4	Champawat	259315	14.79	3	1	717
5	Dehradun	1698560	55.9	11	11	748
6	Garhwal	686527	16.41	6	3	3473
7	Hardwar	1927029	37.77	8	16	612
8	Nainital	955128	38.94	8	3	1141
9	Pithoragarh	485993	14.31	3	0	1675
10	Rudraprayag	236857	4.19	2	0	688
11	Tehri Garhwal	616409	11.37	6	1	1862
12	Udham Singh Nagar	1648367	35.58	14	5	688
13	Uttarkashi	329686	7.35	3	0	707

Source: Census, 2011, GOI, and computed

Heavy forest diversion for basic infrastructures is also being accused for deteriorating local climate's stability. But data suggests that green cover removal is not directly related with the warming. Dehradun and Hardwar which have recorded largest forest diversion are not the warmest districts of the region (Table 3). Forests attract rainfall, but here Hardwar having the noticeable forest diversion, has shown an increasing rainfall trend.

**Table 3 :** District wise/Sector wise details of forest area diverted from 2000 to 2013

District	Total forest diverted area in hectare	Percent of the total forest diverted area for different purposes						
		Road construction	Managing drinking Water	Irrigation	Electricity transmission Lines	Hydroelectric power plants	Mining	Other uses
Almora	816.29	88.36	1.7	0.61	2.94	0.01	0	6.39
Bageshwar	559.05	67.73	1.57	0.52	0.99	2.88	20.01	6.3
Chamoli	2097.74	44.85	0.46	0.05	37.45	11.54	0.05	5.59
Champawat	738.57	37.76	0.8	0.28	0.49	0	52.09	8.58
Dehradun	19496.09	2.05	0.05	0.01	0.13	0	8.22	89.54
Garhwal	677.4	43.97	2.95	0.18	24.69	0.43	21.48	6.3
Haridwar	5197.71	1.16	0	0.31	0.16	0	55.79	42.57
Nainital	3165.71	13.71	2.24	0.32	0.61	0	77.14	5.98
Pithoragarh	1667.66	66.42	0.58	0.1	29.6	0.75	0.25	2.3
Rudraprayag	389.56	66.19	1.76	2.36	3.99	16.16	0	9.55
Tehri Garhwal	1591.74	30.35	1.16	0.08	9.88	44.46	0.41	13.67
Udham Singh Nagar	156.23	9.15	0	2.3	3.16	0	0	85.39
Uttarkashi	830.95	52.71	1.1	0.95	13.22	27.59	0	4.44

Source: Uttarakhand forest statistics, Forest Department, Government of Uttarakhand, p. 44.

Uttarakhand is famous for religious and four major religious centres of the state have been adventure tourism. Noticeably the tourist pressure at almost doubled during the last twelve years (Table 4).

**Table 4 :** Tourist inflow at selected location in Uttarakhand

Place	District	Percent increase in tourist inflow (2001-2012)
Yamunotri	Uttarkashi	240
Gangotri	Uttarkashi	250
Kedarnath	Rudraprayag	378
Badrinath	Chamoli	136

Source: CSE, 2013

The three districts– Uttarkashi, Rudraprayag and Chamoli, where these religious centres are located, have recorded very significant warming during past decade. Increasing vehicular pollution seems fuelling temperature rise in these areas. Although growing industrialisation and vehicular density in Dehradun and Hardwar districts have no significant impression on temperature trend on the other hand. It can be said that vehicular pollution is more significantly correlated with temperature patterns in hilly areas while in the plain region, it has less impact on the atmospheric state. In other words neutralising capacity of plain ecosystem seems greater than mountainous ecosystem.

### III. CONCLUSION

Analysis shows noticeable departures in temperature and rainfall patterns. Months of March and May have recorded more rainfall and significant warming. Temperature of June, July, August and September are at cooler side. Result shows that surface temperatures have risen significantly during the last century, but this may be result of various cooling and

warming phases. Besides having significant temperature-time correlations,  $R^2$  values are very weak because of very noisy data. The ARIMA models predicted warming up to  $0.3^{\circ}\text{C}$  till 2035, being maximum for Chamoli district. Results show that this change is almost natural rather than anthropogenic. Warming is unequivocal with decreasing rainfall (except Hardwar), however, temperature and rainfall patterns do not fully support the hypothesis that urbanisation, industrialisation or green cover removal have great bearing on this warming or drying trend. Although increasing vehicular pollution in temperature-sensitive high altitude areas seems to have some impact on these trends. We can say while human interference has fuelled some variations in patterns, natural factors are the major cause behind climatic variability and changes. IPCC's claim that due to human intervention in the Himalayan ecosystem, up to 2035 we are going to lose large volume of glaciers, thus, does not seem a real claim.



## REFERENCES RÉFÉRENCES REFERENCIAS

1. Black George (2009). India Enlightened. *onearth*, Summer edition, pp. 28-29.
2. Cruz, R.V., Harasawa, H., Lal, M., Wu, S., Anokhin, Y., Punsalmaa, B., Honda, Y., Jafari, M., Li, C., and Huu N.N. (2007). Asia. In M.L. Parry, O.F. Canziani, J.P. Palutikof, P.J. Linden V.D., and Hanson, C.E. (eds.), *Climate Change 2007: Impacts, Adaptation and Vulnerability*, Contribution of Working Group II to the Fourth Assessment Report of the Intergovernmental Panel on Climate Change, Cambridge University Press, Cambridge, UK, pp. 469-506.
3. NDMA (2007). *National Disaster Management Guideline*, National Disaster Management Authority, Government of India, p. 1.
4. Raina V.K. (2010). Himalayan Glaciers: A State-of-Art Review of Glacial Studies, Glacial Retreat and Climate Change. *MOEF Discussion Paper*, Ministry of Environment & Forests, Government of India, p. 7.