

CentraCare Health

DigitalCommons@CentraCare Health

Nursing Posters

Posters and Scholarly Works

2023

Safe Intra-Hospital Transport of Adult Patients on Non-Critical care Units

Teresa Jahn

CentraCare Health, teresa.jahn@centracare.com

Janelle Maciej

CentraCare Health, maciejj@centracare.com

Greta Titus

CentraCare Health, annagreta.titus@centracare.com

Follow this and additional works at: https://digitalcommons.centracare.com/nursing_posters



Part of the [Critical Care Nursing Commons](#), and the [Other Nursing Commons](#)

Recommended Citation

Jahn, Teresa; Maciej, Janelle; and Titus, Greta, "Safe Intra-Hospital Transport of Adult Patients on Non-Critical care Units" (2023). *Nursing Posters*. 165.

https://digitalcommons.centracare.com/nursing_posters/165

This Book is brought to you for free and open access by the Posters and Scholarly Works at DigitalCommons@CentraCare Health. It has been accepted for inclusion in Nursing Posters by an authorized administrator of DigitalCommons@CentraCare Health. For more information, please contact schlepers@centracare.com.

Safe Intra-hospital Transport of Adult Patients on Non-Critical Care Units

Teresa Jahn, APRN, CCRN, CCNS, Janelle Maciej, RN-BC, BSN, Greta Titus RN, BSN

St. Cloud Hospital, CentraCare St. Cloud, Minnesota



Plan

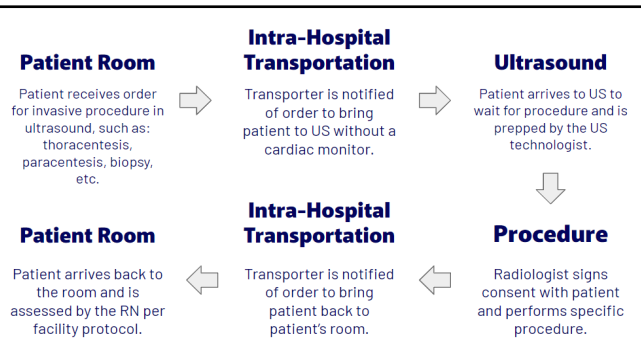
Between 2021 and 2022, two non-critical adult patients returning from the imaging department after an invasive procedure developed increased oxygen needs, which ended in death for one patient and a transfer to critical care for the other. No formal guidelines exist for the intra-hospital transport of non-critical care patients. Without practice guidelines, essential elements to complete safe intra-hospital transport by unlicensed personnel maybe absent. An intra-hospital transport checklist was developed for non-critical care patients leaving the unit for procedures in the imaging department

Do

- A “RN Pre-Invasive Procedure Transport Safety Checklist” was created by a Telemetry RN (MSN student, Greta Titus) and CNS, Teresa Jahn
- The checklist was designed to answer questions to determine a patient’s hemodynamic and respiratory stability prior to transport by an unlicensed person
- The checklist is to be completed prior to transport on all patients leaving the unit for a procedure in the imaging department (i.e., paracentesis, thoracentesis, biopsy, etc.)
- If one of the questions answered is “yes”, the next step is to prompt a huddle with Resource RN or Charge RN to identify if a patient is safe for transport without a RN.
- The “why” for the change was presented by Greta Titus during the November 2022 CentraCare Heart and Vascular Center Clinical (CCHVC) Practice meeting
- Staff were also notified of this change during Telemetry daily huddles and weekly update
- The trial started on Telemetry beginning 11/1/2022
- Follow up on the progress of the practice change was presented by CCHVC CNS during Telemetry Education Days in January-February 2023.

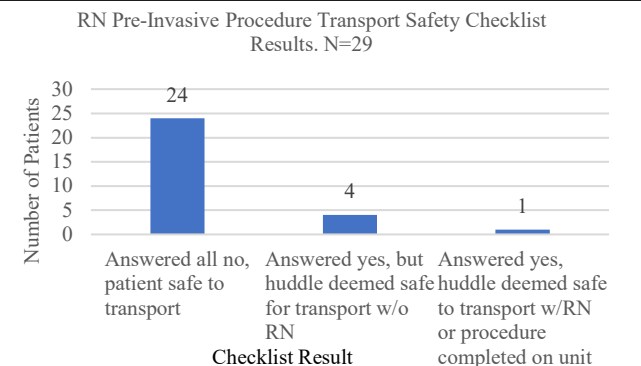
Study

Pre-Trial Process for non-critical care adult patients.



Post-Trial Process for non-critical care adult patients.

Since the start of the checklist, all patients have been transported safely to and from the imaging department.



Team Members

Teresa Jahn, APRN, CCRN, CCNS
Janelle Maciej RN-BC, BSN
Greta Titus RN, BSN (MSN student)
Kathy Collins RN, BSN CMSRN

A special thank you to all nursing staff on the Telemetry and Surgical units for assisting in the trial data collection.

Teresa.jahn@centracare.com, maciejj@centracare.com, annagreta.titus@centracare.com

Act

Sample of the intra-hospital safety checklist.

RN Pre-Invasive Procedure Transport Safety Checklist (intra-hospital transportation)
Patients include those going to Ultrasound for an invasive reason (i.e. a tap, thoracentesis, paracentesis, biopsy, etc.)

Patient Label: _____

RN assigned to patient is: _____
Procedure patient is having: _____
Code Status: _____

- Oxygen source: _____ (i.e. room air, nasal cannula, etc.)
Oxygen flow rate: _____ (liters)
- Does the patient have increased oxygen needs within the past 12 hours?
 Yes
 No
- Does the patient require continuous pulse oximetry saturation monitoring?
 Yes
 No
- Does the patient have current behavioral issues of both agitated AND confused? (i.e. is the patient pulling at lines and might pull off O2 in route to imaging?)
 Yes
 No
- Does the patient meet an abnormal systolic blood pressure criteria? Normal SBP 90-150 mm Hg
 Yes
 No
- Does the patient meet an abnormal respiratory rate? Normal 8-20 breath/min
 Yes
 No
- Does the patient meet an abnormal pulse rate? Normal 50-120 bpm
 Yes
 No

If RN answered YES to any of the above questions, then a huddle is warranted before the patient is transferred to ultrasound. As of now, a huddle includes: RN with Resource RN and/or Charge RN to determine patient intrahospital transportation safety. Consider calling Ultrasound at ext. 34202. If necessary, resource RN will transport the patient with a transporter while remaining on the cardiac monitor and continuous pulse oximeter saturations if necessary (228). Note: Teresa Jahn is available with questions ext. 55254.

If RN answered all NO to the above questions OR if deemed okay to transport without a RN, ensure the same level of monitoring that is provided on the patient's current unit.

Remember to keep cardiac chest monitor attached for intrahospital transportation and if patient is requiring oxygen needs, then verify full oxygen tank is brought with patient on transport cart.

- Did the Imaging RN give report prior to sending patient back to home unit?
 Yes
 No

*** Please return completed checklist to Charge Nurse

Date	Assessment, Evaluation, and Goals
September 2022	First meeting: identify PDA, establish goals, literature review with evidence-based practice
October 2022	Second meeting: collaborate for a solution. Intra-hospital Pre-Safety Checklist created
November 2022	Introduce trial study checklist on Telemetry
April 2023	Evaluate, make changes, begin additional trial on Surgical Units
July 2023	Introduce checklist and obtain approval to go house wide at SCH Nursing Clinical Practice Committee meeting
January 2024	6-month evaluation and implement changes as appropriate
March 2024	Implement checklist into Epic
June 2024	Develop a policy for intra-hospital transport of non-critical adult patients

The checklist is currently being trialed on the surgical units for more data collection. The goal is to have the checklist become a standard of practice for intra-hospital transport of all non-critical care adult patients and to update the current Intra-Hospital Transport policy to reflect this practice change.

References

Bergman, L., & Chaboyer, W. (2019). *Adverse event during intrahospital transport*. Agency for Healthcare Research and Quality. Retrieved from <https://psnet.ahrq.gov/web-mm/adverse-event-during-intrahospital-transport>

Branson, R., & Rodriguez, D. (2020). Monitoring during transport. *Respiratory Care*, 65(5), 882-893.

CentraCare. (2023). *Transport to/from procedures, intrahospital*. Retrieved from <http://centracarehealth-stcloud.policystat.com/policy/5839170/>.

PSA (2009). *Safe intrahospital transport of the non-icu patient using standardized handoff communication*. Pennsylvania Patient Safety Authority. [Safe Intrahospital Transport of the non-ICU Patient Using Standardized Handoff Communication | Advisory](https://www.ppsa.org/Standardized-Handoff-Communication-Advisory)

Taggu, A., et al. (2015). *Mishaps during intrahospital transport of patients from emergency department - a mixed bag of patients*. Intensive Care Medicine Experimental. <http://www.icm-experimental.com/content/3/S1/A69>