

2023-01-01

X-Ray Polarization Observations of BL Lacertae

*This work was made openly accessible by BU Faculty. Please [share](#) how this access benefits you.
Your story matters.*

Version	
Citation (published version):	<p>R. Middei, I. Lioudakis, M. Perri, S. Puccetti, E. Cavazzuti, L. Di Gesu, S.R. Ehlert, G. Madejski, A.P. Marscher, H.L. Marshall, F. Muleri, M. Negro, S.G. Jorstad, B. Agís-González, I. Agudo, G. Bonnoli, M.I. Bernardos, V. Casanova, M. García-Comas, C. Husillos, A. Marchini, A. Sota, P.M. Kouch, E. Lindfors, G.A. Borman, E.N. Kopatskaya, E.G. Larionova, D.A. Morozova, S.S. Savchenko, A.A. Vasilyev, A.V. Zhovtan, C. Casadio, J. Escudero, I. Myserlis, A. Hales, S. Kameno, R. Kneissl, H. Messias, H. Nagai, D. Blinov, I.G. Bourbah, S. Kiehlmann, E. Kontopodis, N. Mandarakas, S. Romanopoulos, R. Skalidis, A. Vervelaki, J.R. Masiero, D. Mawet, M.A. Millar-Blanchaer, G.V. Panopoulou, S. Tinyanont, A.V. Berdyugin, M. Kagitani, V. Kravtsov, T. Sakanoi, R. Imazawa, M. Sasada, Y. Fukazawa, K.S. Kawabata, M. Uemura, T. Mizuno, T. Nakaoka, H. Akitaya, M. Gurwell, R. Rao, N.D. Lalla, N. Cibrario, I. Donnarumma, D.E. Kim, N. Omodei, L. Pacciani, J. Poutanen, F. Tavecchio, L.A. Antonelli, M. Bachetti, L. Baldini, W.H. Baumgartner, R. Bellazzini, S. Bianchi, S.D. Bongiorno, R. Bonino, A. Brez, N. Bucciantini, F. Capitanio, S. Castellano, S. Ciprini, E. Costa, A. De Rosa, E. Del Monte, A.D. Marco, V. Doroshenko, M. Dovčiak, T. Enoto, Y. Evangelista, S. Fabiani, R. Ferrazzoli, J.A. Garcia, S. Gunji, K. Hayashida, J. Heyl, W. Iwakiri, V. Karas, T. Kitaguchi, J.J. Kolodziejczak, H. Krawczynski, F.L. Monaca, L. Latronico, S. Maldera, A. Manfreda, F. Marin, A. Marinucci, F. Massaro, G. Matt, I. Mitsuishi, C.-Y. Ng, S.L. O'Dell, C. Oppedisano, A. Papitto, G.G. Pavlov, A.L. Peirson, M. Pesce-Rollins, P.-O. Petrucci, M. Pilia, A. Possenti, B.D. Ramsey, J. Rankin, A. Ratheesh, R.W. Romani, C. Sgró, P. Slane, P. Soffitta, G. Spandre, T. Tamagawa, R. Taverna, Y. Tawara, A.F. Tennant, N.E. Thomas, F. Tombesi, A. Trois, S. Tsygankov, R. Turolla,</p>

Article

Multi-Wavelength and Multi-Messenger Studies Using the Next-Generation Event Horizon Telescope

Rocco Lico^{1,2,*}, Svetlana G. Jorstad^{3,4,*}, Alan P. Marscher³, Jose L. Gómez¹, Ioannis Liodakis⁵, Rohan Dahale¹, Antxon Alberdi¹, Roman Gold⁶, Efthalia Traianou¹, Teresa Toscano¹ and Marianna Foschi¹

¹ Instituto de Astrofísica de Andalucía-CSIC, Glorieta de la Astronomía s/n, 18008 Granada, Spain

² INAF Istituto di Radioastronomia, Via Gobetti 101, 40129 Bologna, Italy

³ Institute for Astrophysical Research, Boston University, 725 Commonwealth Avenue, Boston, MA 02215, USA

⁴ Astronomical Institute, St. Petersburg State University, Universitetskij Pr. 28, Petrodvorets, St. Petersburg 198504, Russia

⁵ Finnish Centre for Astronomy with ESO, University of Turku, FI-20014 Turku, Finland

⁶ CP3-Origins, University of Southern Denmark, Campusvej 55, DK-5230 Odense M, Denmark

* Correspondence: rlico@iaa.es (R.L.); jorstad@bu.edu (S.G.J.)

Abstract: The next-generation Event Horizon Telescope (ngEHT) will provide us with the best opportunity to investigate supermassive black holes (SMBHs) at the highest possible resolution and sensitivity. With respect to the existing Event Horizon Telescope (EHT) array, the ngEHT will provide increased sensitivity and uv-coverage (with the addition of new stations), wider frequency coverage (from 86 GHz to 345 GHz and higher), finer resolution (<15 micro-arcseconds), and better monitoring capabilities. The ngEHT will offer a unique opportunity to deeply investigate the physics around SMBHs, such as the disk-jet connection, the mechanisms responsible for high-energy photon and neutrino events, and the role of magnetic fields in shaping relativistic jets, as well as the nature of binary SMBH systems. In this white paper we describe some ngEHT science cases in the context of multi-wavelength studies and synergies.

Keywords: very long baseline interferometry (VLBI); supermassive black holes; active galactic nuclei; multi-wavelength studies; relativistic jets



Citation: Lico, R.; Jorstad, S.G.; Marscher, A.P.; Gómez, J.L.; Liodakis, I.; Dahale, R.; Alberdi, A.; Gold, R.; Traianou, E.; Toscano, T.; et al. Multi-Wavelength and Multi-Messenger Studies Using the Next-Generation Event Horizon Telescope. *Galaxies* **2023**, *11*, 17. <https://doi.org/10.3390/galaxies11010017>

Academic Editor: Massimiliano De Pasquale

Received: 15 November 2022

Revised: 10 January 2023

Accepted: 12 January 2023

Published: 14 January 2023



Copyright: © 2023 by the authors. Licensee MDPI, Basel, Switzerland. This article is an open access article distributed under the terms and conditions of the Creative Commons Attribution (CC BY) license (<https://creativecommons.org/licenses/by/4.0/>).

1. Introduction

Cosmic systems powered by accretion onto supermassive black holes (SMBHs) are the most intense sources of energy in the universe. The tremendous power they generate manifests in a variety of forms: electromagnetic waves from radio to γ -ray wavelengths, ultra-energetic particles, strong magnetic fields, and plasma jets propelled outwards at near-light speeds. There is now firm evidence that SMBHs lie at the hearts of nearly all galaxies. The first direct measurements of the sizes and masses of SMBHs have been obtained with the Event Horizon Telescope (EHT) at 230 GHz for the radio galaxy, M87, ($M_{\text{BH}} = 6.5 \pm 0.7 \times 10^9 M_{\text{Sun}}$, [1]) and the Milky Way black hole, SgrA*, ($M_{\text{BH}} \approx 4 \times 10^6 M_{\text{Sun}}$, [2]). These measurements show consistency with the predictions of general relativity spanning over three orders of magnitude in central mass. Systems where matter falls into the black hole at a high rate create the phenomenon of active galactic nuclei (AGNs). The masses of black holes in AGNs range from less than 1 million to roughly 10 billion solar masses (e.g., [3,4]). The luminosity of the jets can be as high as $\sim 10^{15}$ times that of the sun.

AGNs with powerful jets are rare in the universe, so most lie at distances of hundreds of millions or billions of light-years from the Earth. Much of their light comes from regions of a similar size as our solar system. Their extremely compact nature, combined with the great distances involved, causes these regions to appear extremely small in the sky;

therefore, observations designed to study AGNs require telescopes with extraordinary resolving powers. Furthermore, the extremely luminous emission, and thus the physical conditions that create it, are highly variable with respect to time. Due to these two factors, instruments that probe the nature of AGNs and their jets must provide ultra-fine resolution imaging, as well as the ability to monitor rapid changes in the images.

Such opportunities and capabilities will be offered in the near future by the next-generation Event Horizon Telescope (ngEHT). The main goal of the ngEHT is to upgrade and enhance the current capabilities of the EHT array by adding more than 10 new stations, improving the image dynamic range by ~ 2 orders of magnitude, enabling simultaneous multi-frequency observations up to 345 GHz and possibly higher frequencies, including polarization capabilities at all frequencies, and quadrupling the observing bandwidth [5]. The ngEHT will have an angular resolution of $\sim 10\text{--}15$ micro-arcseconds (μas) and reach linear scales that are a fraction of a light-year. Moreover, the development of new super-resolution algorithms (e.g., [6–8]) will allow the smallest features resolved by the ngEHT to be further improved by a factor of up to ~ 3 . Observations at 86 GHz will also be included, which are expected to be important for understanding the connection between the photon ring and inner jet. The ngEHT project development and implementation will consist of two phases. The first phase is based on the instrument design and site selection, and it is expected to be concluded by the end of 2023. The second phase will consist of the actual construction and commissioning of the ngEHT array, which is expected to be fully operational by 2030, with a gradual deployment in the period 2026–2030.

2. Science Cases

The EHT has already demonstrated the power of multi-wavelength (MWL) synergies for characterizing the underlying physics and emission mechanisms in AGNs. This was by means of an intensive multi-wavelength observation campaign of M87 conducted in 2017 with 19 different observing facilities (Figure 1, EHT MWL Science Working Group et al. [9]). In this section, we describe some potential science cases for the ngEHT in the context of MWL studies.

2.1. Disk-Jet Connection

The ngEHT will allow us to determine a jet's profile starting at its origin in the vicinity of an SMBH, the location and its effect on the jet and length of the jet flow's acceleration and collimation zone (ACZ), and the location of the Bondi radius (inside of which the SMBH's gravitational influence is important). This will provide crucial insights toward understanding the connection and interplay between the jet, the accretion disk, and the black hole. Currently, the jet-disk connection has only been reported for two radio galaxies: 3C 120 [10–12] and 3C 111 [13,14]. Both these radio galaxies possess relativistic jets with apparent speeds of $\sim 5c$ [15]. They exhibit X-ray properties similar to Seyfert galaxies, which implies that their X-ray emissions are produced in the accretion disk (plus its "corona" of hot electrons) in the vicinity of the SMBH. Monitoring with the Very Long Baseline Array (VLBA) at 43 GHz and X-ray satellites (*RXTE*, *Swift*, and *Suzaku*), a connection was established between X-ray flux variations and the emergence of new superluminal emission features ("knots") in the jet: appearances of new knots are preceded by dips in the X-ray luminosity. This X-ray/radio connection conclusively demonstrates a link between changes in accretion disk structure and powerful ejection events. Moreover, there is a similarity with the behavior of X-ray binary systems ("microquasars"), allowing comparisons that are important for generalizing insights obtained regarding the origin of relativistic jets in both types of systems [16].

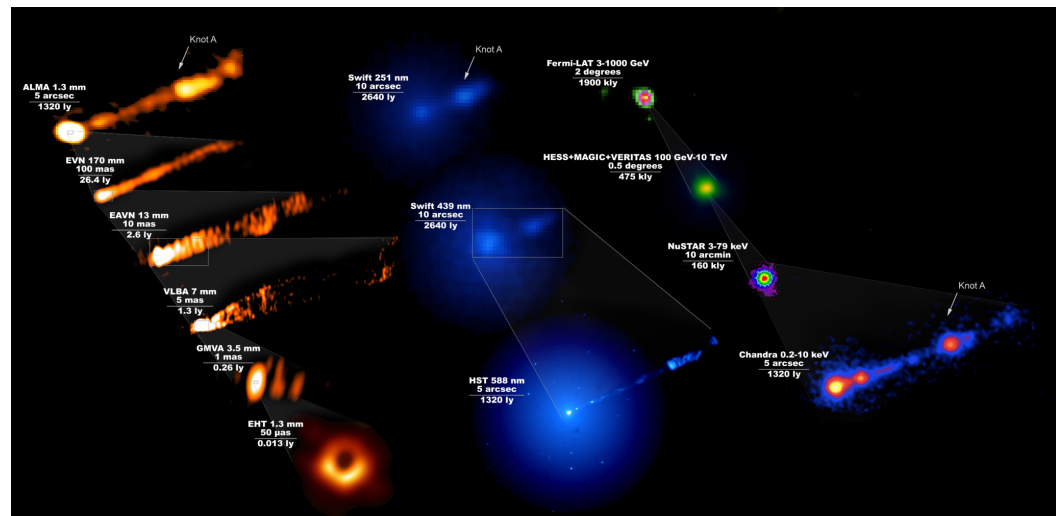


Figure 1. Composite image of M87 as seen across the entire electromagnetic spectrum during the 2017 EHT observation campaign, adapted from [9] under the terms of the CC BY 3.0 licence. For each image, the instrument, the observing wavelength, and the scale are shown next to it. The frequency–wavelength scale at the bottom indicates the location of each instrument in the electromagnetic spectrum. Image credit: the EHT Multi-wavelength Science Working Group; the EHT Collaboration; ALMA (ESO/NAOJ/NRAO); the EVN; the EAVN Collaboration; VLBA (NRAO); the GMVA; the Hubble Space Telescope; the Neil Gehrels Swift Observatory; the Chandra X-ray Observatory; the Nuclear Spectroscopic Telescope Array; the Fermi-LAT Collaboration; the MAGIC collaboration; the VERITAS collaboration; NASA and ESA.

The innermost jet profile and its evolution with respect to distance from the SMBH are key factors in understanding a jet’s collimation and acceleration. Recently, a number of studies have been devoted to this topic. Kovalev et al. [17] performed a search for transitions in the jet shape in a sample of radio-loud AGNs (367 sources) at 15 and 1.4 GHz. The authors found that, for nearby AGNs (redshift $z < 0.07$), 10 out of 29 jets exhibited a transition from a parabolic to a conical shape. They concluded that the transition in geometry is perhaps a common feature of AGNs jets, but they can be observed only when sufficient linear resolution is achieved. The authors also indicated that a jet transition occurs when the particle kinetic energy becomes equal to the energy of the magnetic field, while the Bondi radius position is governed by ambient medium pressure and may not coincide with the transition break. Casadio et al. [18] have analyzed stacked VLBI images at 86 and 43 GHz of BL Lacertae (BL Lac, $z = 0.069$). They found that its jet expanded with a conical geometry, with a higher expansion rate between ~ 5 and 10 pc (de-projected) from the BH. They proposed that the transition in the profile is connected with a change in the external pressure at the location of the Bondi radius ($\sim 3.3 \times 10^5 R_g$).

The capabilities of the high-resolution ngEHT will allow direct imaging of these regions, tracing the jet down to the expected accretion disk and the areas where the jet is ejected and collimated in several AGNs. Such images and the studies they allow in combination with MWL observations, will provide decisive information for constructing and testing theoretical models.

2.2. Nature of the VLBI Core

VLBI images of blazar jets, the most extreme objects in the family of AGNs, are dominated by a compact feature known as the “core”. The nature of the core remains an open question, mostly because of optical depth effects and the limited angular resolution of VLBI arrays. At wavelengths longer than ~ 7 mm, the core is optically thick and essentially unresolved, probably representing the area in the jet where the optical depth is ~ 1 . At 0.8–3 mm, where the resolution is higher and the core is optically thin, it should represent a physical structure in the jet’s acceleration/collimation zone, such as a standing

shock [19], a kink in the jet flow, a site of magnetic reconnection (Figure 2), or some other phenomenon. The EHT Collaboration imaged the core region of the blazar 3C 279, finding it to be dynamic with a puzzling multi-component structure [20]. The ngEHT will provide the data needed to make MWL movies to follow the motions, and perhaps the formation, of the components. This will lead to an understanding of the core, the brightest feature seen in relativistic jets, and how it is connected to the SMBH and its accretion disk.

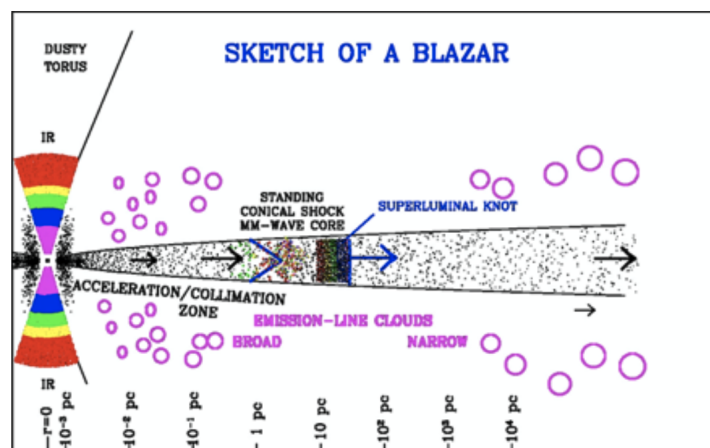


Figure 2. Sketch of the innermost jet region in blazars (image credit: A.Marscher) [21].

A particularly important diagnostic of the nature of the core is its polarization. For example, a standing conical shock is expected to display a radial linear polarization pattern for viewing angles very close to the jet axis [22], a pattern that can be distinguished by the ngEHT. A kink can develop from an instability in a helical field, which has the signature of a rotation measure gradient across the jet (e.g., [23]) that can be detected at the resolution of the ngEHT. Magnetic reconnection can occur where a jet’s magnetic field is highly turbulent, with low polarization and chaotic position angles of polarization across the jet. They can also originate where the magnetic field lines form loops that are stretched parallel to the jet, in which case the linear polarization vectors should lie transversely to the jet.

2.3. Spine-Sheath Structure

High-frequency synchrotron peaked (HSP) blazars, such as Mrk 421 and Mrk 501, are associated with a long-standing problem: how to reconcile extreme luminosities of tera-electronvolt (TeV) gamma rays, which require high relativistic Doppler beaming factors, with low apparent speeds observed in microwave VLBI images (known as the “Doppler crisis”; e.g., [15,24]). One of the most favored models to resolve the Doppler crisis involves the presence of a transverse structure in the jet, with an extremely fast (Lorentz factor > 20) inner spine surrounded by a slower outer sheath (e.g., [25]). This produces distinctive observable signatures in VLBI images, such as limb brightening, especially in linearly polarized intensities, with electric-vector position angles (EVPAs) that are transverse to the jet. All of these signatures have already been observed in the jets of both Mrk 421 and Mrk 501 (e.g., [26–28]), as well as in other blazars (e.g., [23,29,30]). However, as it was previously mentioned, very-high angular resolutions and sensitivities are needed to resolve the transverse structure in the innermost jet regions; these will become routinely available with the ngEHT. In fact, for the case of Centaurus A, EHT observations at 228 GHz have revealed a highly collimated, asymmetrically edge-brightened jet together with a fainter counterjet [31]. In addition, a spine-sheath structure was recently detected in the bright quasar 3C 273 with the fine resolution of space-VLBI *RadioAstron* observations at wavelengths of 18 and 6 cm [32]. At 18 cm, the jet exhibited limb-brightening that had not previously been seen in this source. At 6 cm, an emission from the central stream of plasma was imaged, with a spatial distribution that was complementary to the limb-brightened emission, which indicated the presence of a spine. Regular monitoring with high resolution

and sensitivity is needed to determine the jet stratification structure and its evolution. Such observations do not yet exist, but will be possible with the ngEHT, which will allow measurements of apparent speeds across the jets of several HSP blazars.

2.4. Supermassive Binary Black Holes

Binary SMBH systems represent a natural product of hierarchical galaxy formation and merger events. Currently, one of the best candidates for hosting a binary SMBH system is OJ 287, a bright blazar showing quasi-periodic variability patterns in its optical light-curve that could be explained as the result of the secondary SMBH impacting the accretion disk of a primary one [33,34]. However, alternative scenarios to the binary SMBH system can also explain the variability pattern (e.g., [35]).

Moreover, according to current theoretical models, when the system reaches an orbital separation of 0.1–10 parsec the dynamical processes that drive the coalescence of the two SMBHs cease to be effective and inhibit the merging process. This is known as “the final parsec problem”. The ngEHT, with a resolution finer than $\sim 15 \mu\text{as}$, will represent a unique opportunity to detect and spatially resolve from tens to hundreds of sub-parsec binary SMBH systems (see Pesce et al. [36] for more details about the statistics and the expected detections). Spatially resolving such binary SMBH systems would provide the ultimate proof of their existence. With its monitoring capabilities, an ngEHT will allow us to determine and characterize the orbital parameters of such tight binary systems, whose orbital periods are expected to range from months to a few years, and fully resolve their orbital motion. This is currently being investigated in a set of numerical simulations by using the Black Hole Accretion Code (BHAC, [37]), see Figure 3.

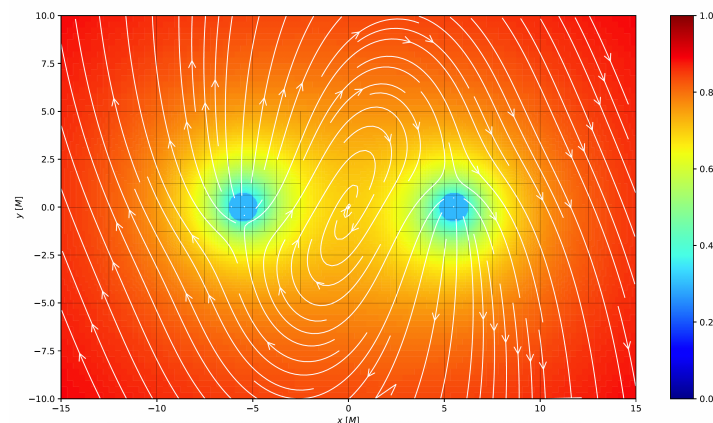


Figure 3. Equatorial slice of a binary SMBH system in the corotating frame interpolated on the Black Hole Accretion Code (BHAC) adaptive mesh grid. The colorscale shows the spacetime lapse function and the arrows show the shift vector.

Ongoing and upcoming large surveys in the optical to X-ray bands (e.g., the European-Chinese X-ray mission Einstein Probe) will provide prime lists of new binary SMBH candidates, among which the best-suited ones can be followed up with the ngEHT to check the source association and measure the orbital parameters. Moreover, the ngEHT high-resolution observations would also represent an important resource for future gravitational wave detectors, both ground-based ones similar to the pulsar timing arrays (PTAs) and space-based ones similar to the Laser Interferometer Space Antenna (LISA), which is sensitive to the low-frequency band of the gravitational wave spectrum expected from binary supermassive black holes.

2.5. High-Energy and Neutrino Events

Blazars are very efficient cosmic accelerators and have been proposed as a possible source of several past high-energy neutrino events, although the production mechanisms

and the precise region(s) where they form are still unknown [38]. The identification of the astrophysical counterparts of high-energy neutrinos is not straightforward (see e.g., [39]), and, in this context, the ngEHT could be helpful in two ways. On one hand, the high-resolution mm-wavelength ngEHT observations will allow us to identify and constrain the region(s) responsible for neutrino production by tracing the variations and delay between the radio emission from the innermost jet regions and the neutrino detection event. On the other hand, owing to its monitoring and observing agility capabilities, an ngEHT will help to more accurately localize neutrino emission sources by triggering prompt observations when a detection event occurs (see Y. Y. Kovalev et al., this issue of *Galaxies*).

The ngEHT will also provide essential details about the innermost regions of blazar jets, allowing us to disentangle the different regions where visible X-ray and γ -ray emissions originate (e.g., near the SMBH, in the jet's acceleration zone, in a standing shock, in a moving knot, in a kink, in regions of magnetic reconnection, etc.), and to better understand the mechanisms and physical processes responsible for the observed emission. The time-domain imaging capabilities of the ngEHT will allow events to be matched in the jet with outbursts of high-energy photons with high accuracy. Moreover, multi-epoch and multi-frequency ngEHT polarization observations will allow investigations into the possible connection of magnetic field variations to the high-energy emission events (e.g., [40]). This can be achieved by determining the time evolution of fundamental polarization parameters, such as the fractional polarization, rotation of the polarization plane, and Faraday rotation measure.

2.6. Polarization and Magnetic Field Studies

The ngEHT will allow the characterization of a polarized radio emission in the near vicinity of the SMBH and constrain the magnetic field geometry, the plasma temperature, and the underlying particle density. This will determine whether the magnetic field is helical, as predicted by most theories, turbulent, or compressed by shocks (e.g., [41–43]). The presence of an ionized medium with a magnetic field causes the direction of linear polarization to rotate as radio waves pass through it; this is also known as Faraday rotation. MWL observations with the ngEHT can measure this effect to explore the medium both inside and surrounding the jet near its vertex. This can determine whether the jet is confined by a wind, an accretion flow, or its own magnetic field. Moreover, with the ngEHT it will be possible to measure the velocity field at the base of a jet, allowing us to test the different magneto-hydrodynamic jet formation models on scales of hundreds to thousands of Schwarzschild radii, and to conclusively determine whether the jets are powered by the extraction of rotational energy from the spinning black hole (Blandford–Znajek process, [44]) or from the accretion flow (Blandford–Payne process, [45]).

Synergies with current (Imaging X-ray Polarimetry Explorer—IXPE [46]) and future (e.g., e-XTP [47], COSI [48]) high-energy polarimeters could also prove invaluable. The combination of broadband radio polarization from the ngEHT and high-energy polarization observations will allow us to distinguish between shock and magnetic reconnection models for particle energization in the jets (e.g., [19,49]), as well as accurately pinpoint the particle acceleration regions. This could have significant implications for models of jet propagation as well as the nature of the blazar core (see Section 2.2). It will also bring a unique view of the spatial evolution of the magnetic field configuration on diverse scales from the vicinity of the black hole to pc and kpc away.

3. Technical Requirements

In order to measure Faraday rotation and gradients in the magnetic field of the most compact regions of jets, and other μ as-scale emission regions, simultaneous multi-frequency ngEHT polarization observations are required (see A. Ricarte et al., this issue of *Galaxies*). This can be implemented in several ways: (1) by using antennas whose frequency can be switched quickly, as is the case, for example, for a VLBA; (2) by combining ngEHT observations with other VLBI arrays (e.g., VLBA or next-generation VLA, at 43 and 86 GHz,

respectively), or with other future space observatories (e.g., Millimetron); (3) by splitting the ngEHT into sub-arrays operating at different frequencies.

To achieve the science goals presented in this paper it will be essential to access the innermost jet regions, with typical 230 GHz flux densities ranging from a fraction to a few tens of mJy. For this reason, a sub-mJy sensitivity will be an essential requirement for the ngEHT, which is achievable thanks to next-generation receivers and the addition of new telescopes to the array. More details about the sensitivity requirements will be presented in M. Johnson et al. in preparation. In order to unambiguously connect MWL flaring and neutrino emission events to changes in the jets, monitoring capabilities are required for the ngEHT at a cadence shorter than the lifetime of the above-mentioned multi-messenger events. This could be possible during 1–2 week campaigns in the fortunate case that we are indeed observing a source with such an event. Either year-long or multiple weeks-long sessions per year would produce a high chance of success. Such multi-epoch ngEHT observations will need to be coordinated with other existing facilities, as well as with the new generation of instruments, such as the Cherenkov Telescope Array (CTA), LISA, and Athena. Moreover, the Russian-led next generation millimeter-band Space VLBI mission Millimetron, when launched, will provide a space arm to the ngEHT. This will enhance the resolution of the ngEHT to provide both space VLBI imaging, although with somewhat limited uv-coverage, and uv-domain studies of photon rings.

Author Contributions: Conceptualization and writing—original draft preparation, R.L., S.G.J. and A.P.M.; writing—review and editing, all authors. All authors have read and agreed to the published version of the manuscript.

Funding: R.L., J.L.G., and R.D. acknowledge financial support from the State Agency for Research of the Spanish MCIU through the “Center of Excellence Severo Ochoa” award for the Instituto de Astrofísica de Andalucía (SEV-2017-0709), from the Spanish Ministerio de Economía y Competitividad and Ministerio de Ciencia e Innovación (grants AYA2016-80889-P, PID2019-108995GB-C21), the Consejería de Economía, Conocimiento, Empresas y Universidad of the Junta de Andalucía (grant P18-FR-1769), the Consejo Superior de Investigaciones Científicas (grant 2019AEP112). A.P.M. and S.G.J. acknowledge financial support from NASA Fermi Guest Investigator grants 80NSSC20K1567 and 80NSSC22K1571.

Data Availability Statement: Not applicable.

Conflicts of Interest: The authors declare no conflict of interest.

References

1. Akiyama, K.; et al. [Event Horizon Telescope Collaboration]. First M87 Event Horizon Telescope Results. I. The Shadow of the Supermassive Black Hole. *Astrophys. J. Lett.* **2019**, *875*, L1.
2. Akiyama, K.; et al. [Event Horizon Telescope Collaboration]. First Sagittarius A* Event Horizon Telescope Results. I. The Shadow of the Supermassive Black Hole in the Center of the Milky Way. *Astrophys. J. Lett.* **2022**, *930*, L12. [[CrossRef](#)]
3. Woo, J.H.; Urry, C.M. Active Galactic Nucleus Black Hole Masses and Bolometric Luminosities. *Astrophys. J.* **2002**, *579*, 530–544.
4. Ghez, A.M.; Duchêne, G.; Matthews, K.; Hornstein, S.D.; Tanner, A.; Larkin, J.; Morris, M.; Becklin, E.E.; Salim, S.; Kremenek, T.; et al. The First Measurement of Spectral Lines in a Short-Period Star Bound to the Galaxy’s Central Black Hole: A Paradox of Youth. *Astrophys. J. Lett.* **2003**, *586*, L127–L131.
5. Doeleman, S.; Blackburn, L.; Dexter, J.; Gomez, J.L.; Johnson, M.D.; Palumbo, D.C.; Weintroub, J.; Farah, J.R.; Fish, V.; Loinard, L.; et al. Studying Black Holes on Horizon Scales with VLBI Ground Arrays. *arXiv* **2019**, arXiv:1909.01411.
6. Akiyama, K.; Kuramochi, K.; Ikeda, S.; Fish, V.L.; Tazaki, F.; Honma, M.; Doeleman, S.S.; Broderick, A.E.; Dexter, J.; Mościbrodzka, M.; et al. Imaging the Schwarzschild-radius-scale Structure of M87 with the Event Horizon Telescope Using Sparse Modeling. *Astrophys. J.* **2017**, *838*, 1.
7. Chael, A.A.; Johnson, M.D.; Bouman, K.L.; Blackburn, L.L.; Akiyama, K.; Narayan, R. Interferometric Imaging Directly with Closure Phases and Closure Amplitudes. *Astrophys. J.* **2018**, *857*, 23.
8. Broderick, A.E.; Pesce, D.W.; Tiede, P.; Pu, H.Y.; Gold, R. Hybrid Very Long Baseline Interferometry Imaging and Modeling with THEMIS. *Astrophys. J.* **2020**, *898*, 9.
9. Algaba, J.C.; et al. [EHT MWL Science Working Group]. Broadband Multi-wavelength Properties of M87 during the 2017 Event Horizon Telescope Campaign. *Astrophys. J. Lett.* **2021**, *911*, L11.
10. Marscher, A.P.; Jorstad, S.G.; Gómez, J.L.; Aller, M.F.; Teräsranta, H.; Lister, M.L.; Stirling, A.M. Observational evidence for the accretion-disk origin for a radio jet in an active galaxy. *Nature* **2002**, *417*, 625–627. [[CrossRef](#)] [[PubMed](#)]

11. Chatterjee, R.; Marscher, A.P.; Jorstad, S.G.; Olmstead, A.R.; McHardy, I.M.; Aller, M.F.; Aller, H.D.; Lähteenmäki, A.; Tornikoski, M.; Hovatta, T.; et al. Disk-Jet Connection in the Radio Galaxy 3C 120. *Astrophys. J.* **2009**, *704*, 1689–1703.
12. Lohfink, A.M.; Reynolds, C.S.; Jorstad, S.G.; Marscher, A.P.; Miller, E.D.; Aller, H.; Aller, M.F.; Brenneman, L.W.; Fabian, A.C.; Miller, J.M.; et al. An X-Ray View of the Jet Cycle in the Radio-loud AGN 3C120. *Astrophys. J.* **2013**, *772*, 83.
13. Chatterjee, R.; Marscher, A.P.; Jorstad, S.G.; Markowitz, A.; Rivers, E.; Rothschild, R.E.; McHardy, I.M.; Aller, M.F.; Aller, H.D.; Lähteenmäki, A.; et al. Connection Between the Accretion Disk and Jet in the Radio Galaxy 3C 111. *Astrophys. J.* **2011**, *734*, 43.
14. Tombesi, F.; Sambruna, R.M.; Marscher, A.P.; Jorstad, S.G.; Reynolds, C.S.; Markowitz, A. Comparison of ejection events in the jet and accretion disc outflows in 3C 111. *Mon. Not. R. Astron. Soc.* **2012**, *424*, 754–761.
15. Weaver, Z.R.; Jorstad, S.G.; Marscher, A.P.; Morozova, D.A.; Troitsky, I.S.; Agudo, I.; Gómez, J.L.; Lähteenmäki, A.; Tammi, J.; Tornikoski, M. Kinematics of Parsec-scale Jets of Gamma-Ray Blazars at 43 GHz during 10 yr of the VLBA-BU-BLAZAR Program. *Astrophys. J. Suppl. Ser.* **2022**, *260*, 12.
16. Fender, R.P.; Belloni, T.M.; Gallo, E. Towards a unified model for black hole X-ray binary jets. *Mon. Not. R. Astron. Soc.* **2004**, *355*, 1105–1118.
17. Kovalev, Y.Y.; Pushkarev, A.B.; Nokhrina, E.E.; Plavin, A.V.; Beskin, V.S.; Chernoglazov, A.V.; Lister, M.L.; Savolainen, T. A transition from parabolic to conical shape as a common effect in nearby AGN jets. *Mon. Not. R. Astron. Soc.* **2020**, *495*, 3576–3591.
18. Casadio, C.; MacDonald, N.R.; Boccardi, B.; Jorstad, S.G.; Marscher, A.P.; Krichbaum, T.P.; Hodgson, J.A.; Kim, J.Y.; Traianou, E.; Weaver, Z.R.; et al. The jet collimation profile at high resolution in BL Lacertae. *Astron. Astrophys.* **2021**, *649*, A153.
19. Liidakis, I.; Marscher, A.P.; Agudo, I.; Berdyugin, A.V.; Bernardos, M.I.; Bonnoli, G.; Borman, G.A.; Casadio, C.; Casanova, V.; Cavazzuti, E.; et al. Polarized Blazar X-rays imply particle acceleration in shocks. *arXiv* **2022**, arXiv:2209.06227.
20. Kim, J.Y.; Krichbaum, T.P.; Broderick, A.E.; Wielgus, M.; Blackburn, L.; Gómez, J.L.; Johnson, M.D.; Bouman, K.L.; Chael, A.; Akiyama, K.; et al. Event Horizon Telescope imaging of the archetypal blazar 3C 279 at an extreme 20 microarcsecond resolution. *Astron. Astrophys.* **2020**, *640*, A69. [[CrossRef](#)]
21. Marscher, A.P.; Jorstad, S.G.; D’Arcangelo, F.D.; Smith, P.S.; Williams, G.G.; Larionov, V.M.; Oh, H.; Olmstead, A.R.; Aller, M.F.; Aller, H.D.; et al. The inner jet of an active galactic nucleus as revealed by a radio-to- γ -ray outburst. *Nature* **2008**, *452*, 966–969. [[CrossRef](#)]
22. Cawthorne, T.V.; Jorstad, S.G.; Marscher, A.P. Polarization Structure in the Core of 1803+784: A Signature of Recollimation Shocks? *Astrophys. J.* **2013**, *772*, 14.
23. Gabuzda, D.C.; Knuettel, S.; Reardon, B. Transverse Faraday-rotation gradients across the jets of 15 active galactic nuclei. *Mon. Not. R. Astron. Soc.* **2015**, *450*, 2441–2450.
24. Lico, R.; Giroletti, M.; Orienti, M.; Giovannini, G.; Cotton, W.; Edwards, P.G.; Fuhrmann, L.; Krichbaum, T.P.; Sokolovsky, K.V.; Kovalev, Y.Y.; et al. VLBA monitoring of Mrk 421 at 15 GHz and 24 GHz during 2011. *Astron. Astrophys.* **2012**, *545*, A117.
25. Ghisellini, G.; Tavecchio, F.; Chiaberge, M. Structured jets in TeV BL Lac objects and radiogalaxies. Implications for the observed properties. *Astron. Astrophys.* **2005**, *432*, 401–410. [[CrossRef](#)]
26. Giroletti, M.; Giovannini, G.; Cotton, W.D.; Taylor, G.B.; Pérez-Torres, M.A.; Chiaberge, M.; Edwards, P.G. The jet of Markarian 501 from millions of Schwarzschild radii down to a few hundreds. *Astron. Astrophys.* **2008**, *488*, 905–914. [[CrossRef](#)]
27. Lico, R.; Giroletti, M.; Orienti, M.; Gómez, J.L.; Casadio, C.; D’Ammando, F.; Blasi, M.G.; Cotton, W.; Edwards, P.G.; Fuhrmann, L.; et al. Very Long Baseline polarimetry and the γ -ray connection in Markarian 421 during the broadband campaign in 2011. *Astron. Astrophys.* **2014**, *571*, A54.
28. Koyama, S.; Kino, M.; Doi, A.; Niinuma, K.; Giroletti, M.; Paneque, D.; Akiyama, K.; Giovannini, G.; Zhao, G.Y.; Ros, E.; et al. Stable Radio Core of the Blazar Mrk 501 during High-energy Active State in 2012. *Astrophys. J.* **2019**, *884*, 132. [[CrossRef](#)]
29. Hovatta, T.; Lister, M.L.; Aller, M.F.; Aller, H.D.; Homan, D.C.; Kovalev, Y.Y.; Pushkarev, A.B.; Savolainen, T. MOJAVE: Monitoring of Jets in Active Galactic Nuclei with VLBA Experiments. VIII. Faraday Rotation in Parsec-scale AGN Jets. *Astron. J.* **2012**, *144*, 105.
30. Nagai, H.; Haga, T.; Giovannini, G.; Doi, A.; Orienti, M.; D’Ammando, F.; Kino, M.; Nakamura, M.; Asada, K.; Hada, K.; et al. Limb-brightened Jet of 3C 84 Revealed by the 43 GHz Very-Long-Baseline-Array Observation. *Astrophys. J.* **2014**, *785*, 53.
31. Janssen, M.; Falcke, H.; Kadler, M.; Ros, E.; Wielgus, M.; Akiyama, K.; Baloković, M.; Blackburn, L.; Bouman, K.L.; Chael, A.; et al. Event Horizon Telescope observations of the jet launching and collimation in Centaurus A. *Nat. Astron.* **2021**, *5*, 1017–1028.
32. Bruni, G.; Gómez, J.L.; Vega-García, L.; Lobanov, A.P.; Fuentes, A.; Savolainen, T.; Kovalev, Y.Y.; Perucho, M.; Martí, J.M.; Anderson, J.M.; et al. RadioAstron reveals a spine-sheath jet structure in 3C 273. *Astron. Astrophys.* **2021**, *654*, A27.
33. Valtonen, M.J.; Lehto, H.J.; Nilsson, K.; Heidt, J.; Takalo, L.O.; Sillanpää, A.; Villforth, C.; Kidger, M.; Poyner, G.; Pursimo, T.; et al. A massive binary black-hole system in OJ287 and a test of general relativity. *Nature* **2008**, *452*, 851–853.
34. Gómez, J.L.; Traianou, E.; Krichbaum, T.P.; Lobanov, A.P.; Fuentes, A.; Lico, R.; Zhao, G.Y.; Bruni, G.; Kovalev, Y.Y.; Lähteenmäki, A.; et al. Probing the Innermost Regions of AGN Jets and Their Magnetic Fields with RadioAstron. V. Space and Ground Millimeter-VLBI Imaging of OJ 287. *Astrophys. J.* **2022**, *924*, 122.
35. Liska, M.; Hesp, C.; Tchekhovskoy, A.; Ingram, A.; van der Klis, M.; Markoff, S. Formation of precessing jets by tilted black hole discs in 3D general relativistic MHD simulations. *Mon. Not. R. Astron. Soc.* **2018**, *474*, L81–L85.
36. Pesce, D.W.; Palumbo, D.C.M.; Narayan, R.; Blackburn, L.; Doeleman, S.S.; Johnson, M.D.; Ma, C.P.; Nagar, N.M.; Natarajan, P.; Ricarte, A. Toward Determining the Number of Observable Supermassive Black Hole Shadows. *Astrophys. J.* **2021**, *923*, 260.

37. Porth, O.; Olivares, H.; Mizuno, Y.; Younsi, Z.; Rezzolla, L.; Moscibrodzka, M.; Falcke, H.; Kramer, M. The black hole accretion code. *Comput. Astrophys. Cosmol.* **2017**, *4*, 1.
38. Giommi, P.; Padovani, P. Astrophysical Neutrinos and Blazars. *Universe* **2021**, *7*, 492.
39. Nanci, C.; Giroletti, M.; Orienti, M.; Migliori, G.; Moldón, J.; Garrappa, S.; Kadler, M.; Ros, E.; Buson, S.; An, T.; et al. Observing the inner parsec-scale region of candidate neutrino-emitting blazars. *Astron. Astrophys.* **2022**, *663*, A129.
40. Blinov, D.; Pavlidou, V.; Papadakis, I.E.; Hovatta, T.; Pearson, T.J.; Lioudakis, I.; Panopoulou, G.V.; Angelakis, E.; Baloković, M.; Das, H.; et al. RoboPol: Optical polarization-plane rotations and flaring activity in blazars. *Mon. Not. R. Astron. Soc.* **2016**, *457*, 2252–2262.
41. Gómez, J.L.; Lobanov, A.P.; Bruni, G.; Kovalev, Y.Y.; Marscher, A.P.; Jorstad, S.G.; Mizuno, Y.; Bach, U.; Sokolovsky, K.V.; Anderson, J.M.; et al. Probing the Innermost Regions of AGN Jets and Their Magnetic Fields with RadioAstron. I. Imaging BL Lacertae at 21 Microarcsecond Resolution. *Astrophys. J.* **2016**, *817*, 96.
42. Issaoun, S.; Wielgus, M.; Jorstad, S.; Krichbaum, T.P.; Blackburn, L.; Janssen, M.; Chan, C.k.; Pesce, D.W.; Gómez, J.L.; Akiyama, K.; et al. Resolving the Inner Parsec of the Blazar J1924-2914 with the Event Horizon Telescope. *Astrophys. J.* **2022**, *934*, 145.
43. Zhao, G.Y.; Gómez, J.L.; Fuentes, A.; Krichbaum, T.P.; Traianou, E.; Lico, R.; Cho, I.; Ros, E.; Komossa, S.; Akiyama, K.; et al. Unraveling the Innermost Jet Structure of OJ 287 with the First GMVA + ALMA Observations. *Astrophys. J.* **2022**, *932*, 72.
44. Blandford, R.D.; Znajek, R.L. Electromagnetic extraction of energy from Kerr black holes. *Mon. Not. R. Astron. Soc.* **1977**, *179*, 433–456. [[CrossRef](#)]
45. Blandford, R.D.; Payne, D.G. Hydromagnetic flows from accretion disks and the production of radio jets. *Mon. Not. R. Astron. Soc.* **1982**, *199*, 883–903. [[CrossRef](#)]
46. Weisskopf, M.C.; Soffitta, P.; Baldini, L.; Ramsey, B.D.; O'Dell, S.L.; Romani, R.W.; Matt, G.; Deinger, W.D.; Baumgartner, W.H.; Bellazzini, R.; et al. Imaging X-ray Polarimetry Explorer: Prelaunch. *J. Astron. Telesc. Instrum. Syst.* **2022**, *8*, 026002. [[CrossRef](#)]
47. Zhang, S.; Santangelo, A.; Feroci, M.; Xu, Y.; Lu, F.; Chen, Y.; Feng, H.; Zhang, S.; Brandt, S.; Hernanz, M.; et al. The enhanced X-ray Timing and Polarimetry mission—eXTP. *Sci. China Phys. Mech. Astron.* **2019**, *62*, 29502.
48. Beechert, J.; Lazar, H.; Boggs, S.E.; Brandt, T.J.; Chang, Y.C.; Chu, C.Y.; Gulick, H.; Kierans, C.; Lowell, A.; Pellegrini, N.; et al. Calibrations of the Compton Spectrometer and Imager. *Nucl. Instrum. Methods Phys. Res. A* **2022**, *1031*, 166510.
49. Di Gesu, L.; Donnarumma, I.; Tavecchio, F.; Agudo, I.; Barnounin, T.; Cibrario, N.; Di Lalla, N.; Di Marco, A.; Escudero, J.; Errando, M.; et al. The X-ray Polarization View of Mrk~421 in an Average Flux State as Observed by the Imaging X-ray Polarimetry Explorer. *arXiv* **2022**, arXiv:2209.07184.

Disclaimer/Publisher's Note: The statements, opinions and data contained in all publications are solely those of the individual author(s) and contributor(s) and not of MDPI and/or the editor(s). MDPI and/or the editor(s) disclaim responsibility for any injury to people or property resulting from any ideas, methods, instructions or products referred to in the content.