



track 4

Smart Future

Paper Title: Exploring Visual Analysis in Design Research: Insights from Workshops with PhD Students at the University of Porto, 2022

Susana Barreto, Assistant Professor of Design, University of Porto

Heitor Alvelos, Associate Professor of Design, University of Porto

Ana Miriam Rebelo, PhD student in Design, University of Porto

Luciana Lopes, PhD student in Design, University of Porto



The above post-it displays the words "transcendency" and "sharing".



<https://phddesign2017.wordpress.com/>







'Visual and semantic identities of the city of Porto:
an exploration of the contributions of informal dwelling,





Features of informal housing:

Chromatic palettes that stand out from the surroundings;



Features of informal housing:

Chromatic palettes that stand out from the surroundings;

Irregular/discontinued volumes in the landscape;



Features of informal housing:

Chromatic palettes that stand out from the surroundings;

Irregular/discontinued volumes in the landscape;

Patch-work of materials;



Features of informal housing:

Chromatic palettes that stand out from the surroundings;

Irregular/discontinued volumes in the landscape;

Patch-working of materials (tiles etc);

“Without-project” (small/displaced windows etc);



Features of informal housing:

Chromatic palettes that stand out from the surroundings;

Irregular/discontinued volumes in the landscape;

Patch-working of materials (tiles etc);

“Without-project” (small/displaced windows etc);

Self design (DIY) – participatory/community design;



Features of informal housing:

- Chromatic palettes that stand out from the surroundings;
- Irregular/discontinued volumes in the landscape;
- Patch-working of materials (tiles etc);
- “Without-project” (small/displaced windows etc);
- Self design (DIY) – participatory/community design;
- Low-budget;



Features of informal housing:

Chromatic palettes that stand out from the surroundings;

Irregular/discontinued volumes in the landscape;

Patch-working of materials (tiles etc);

“Without-project” (small/displaced windows etc);

Self design (DIY) – participatory/community design;

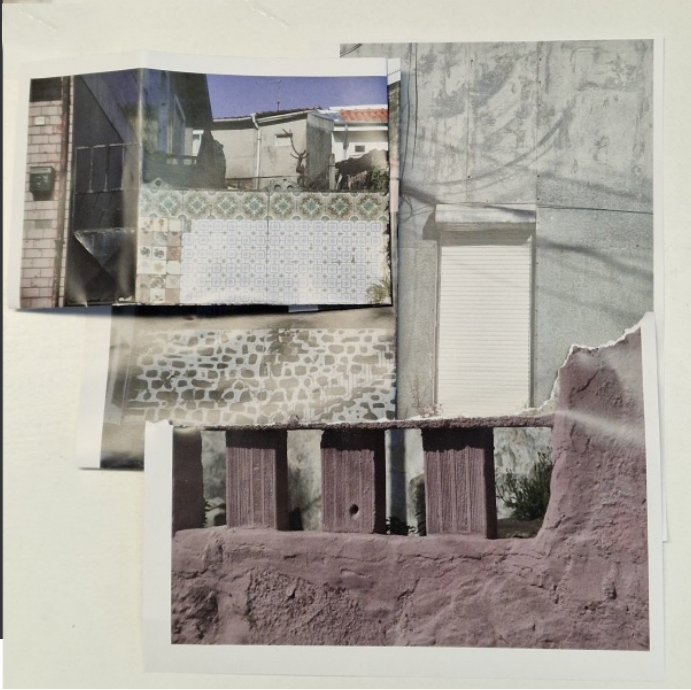
Low-budget;

Adaptable (can be further changed);

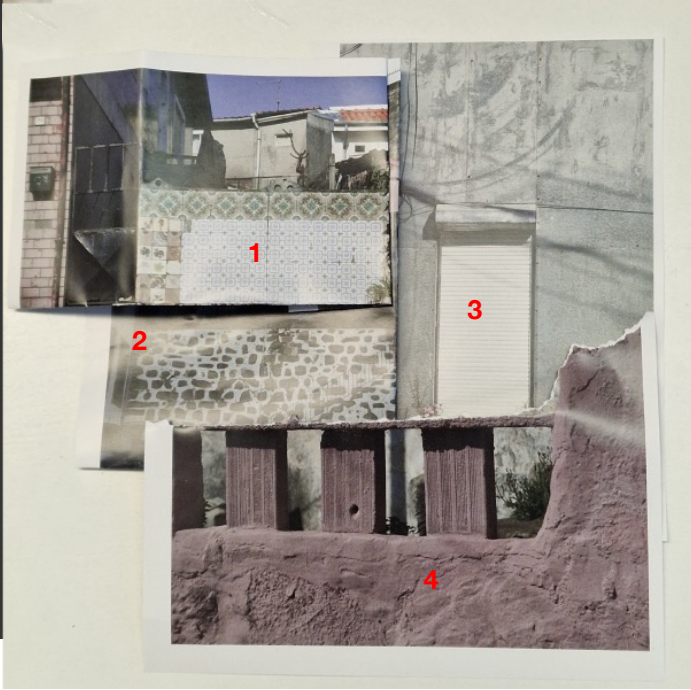


Features of informal housing:

- Chromatic palettes that stand out from the surroundings;
- Irregular/discontinued volumes in the landscape;
- Patch-working of materials (tiles etc);
- “Without-project” (small/displaced windows etc);
- Self design (DIY) – participatory/community design;
- Low-budget;
- Adaptable (can be further changed);
- Human scale (small buildings).



4+4 images displaying a "torn and montage" visual exercise in the pursuit of categorization.

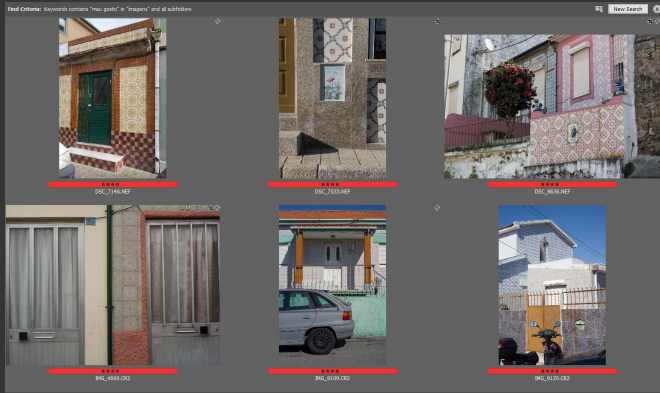


4+4 images displaying a "torn and montage" visual exercise in the pursuit of categorization.

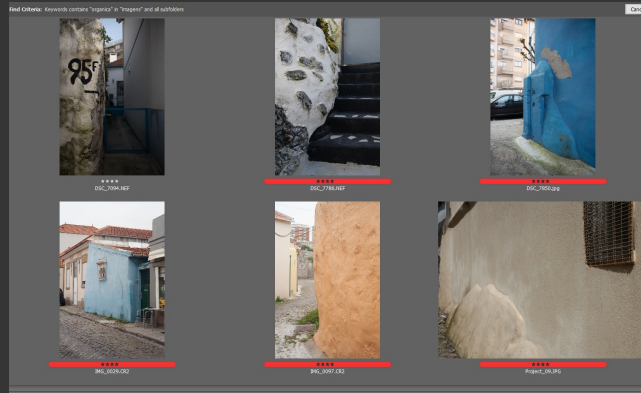


Central type of definition

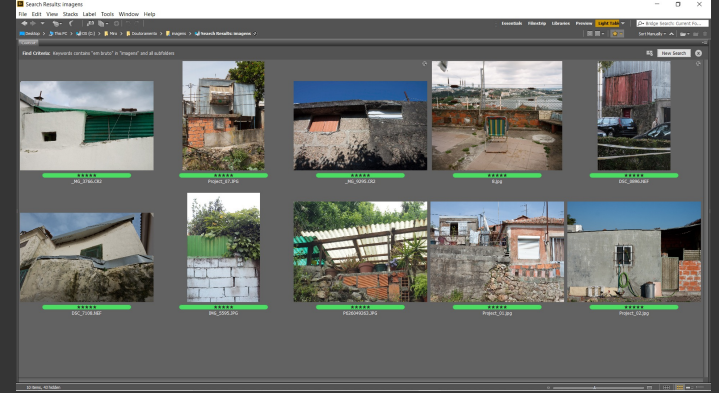
concentrating primarily on the features characteristic of the stronger typical instances of a practice, which makes the discovery of the telling features, the underlying principle of the concept, its rational and purpose more likely, and therefore to 'sharpen our perception of the phenomena' in J. L. Austin (1956: 8)



Bad Taste



Organic



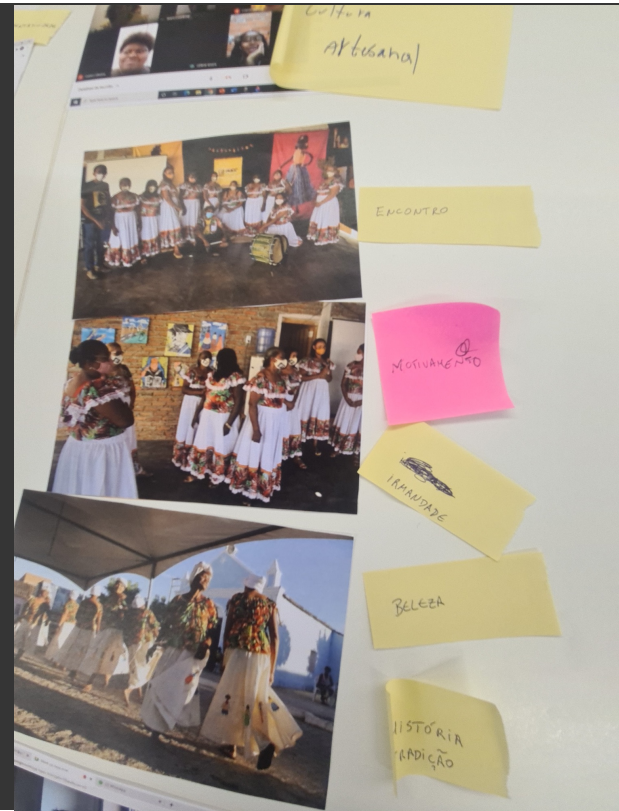
Raw





Pulse Approach: proposal for design project management tool based on the philosophies of ancestral wisdom of the *Souths* communities from Portugal and Brazil”.















THANK YOU.

Sbarreto@fba.up.pt

Halvelos@fba.up.pt

Frase de referência ao financiamento em Inglês:
*This work is financed by national funds through the
FCT – Fundação para a Ciência e a Tecnologia, I.P.,
under the scope of the project UIDB/04057/2020.*

