



INSTITUT DE FRANCE
Académie des sciences

Comptes Rendus

Physique

Stephane Mazevet, Antonin Affholder, Boris Sauterey, Alex Bixel, Daniel Apai
and Regis Ferriere


Prospects for the characterization of habitable planets

Published online: 11 August 2023

<https://doi.org/10.5802/crphys.154>

Part of Special Issue: Exoplanets

Guest editors: Anne-Marie Lagrange (LESIA, Observatoire de Paris, Université PSL, CNRS, Sorbonne Université, Sorbonne Paris Cité, 5 place Jules Janssen, 92195 Meudon, France.)
and Daniel Rouan (LESIA, Observatoire de Paris, Université PSL, CNRS, Sorbonne Université, Sorbonne Paris Cité, 5 place Jules Janssen, 92195 Meudon, France.)

 This article is licensed under the
CREATIVE COMMONS ATTRIBUTION 4.0 INTERNATIONAL LICENSE.
<http://creativecommons.org/licenses/by/4.0/>



Les Comptes Rendus. Physique sont membres du
Centre Mersenne pour l'édition scientifique ouverte
www.centre-mersenne.org
e-ISSN : 1878-1535



Exoplanets / *Exoplanètes*

Prospects for the characterization of habitable planets

Perspectives pour la caractérisation des planètes habitables

Stephane Mazevet^{*,a}, Antonin Affholder^b, Boris Sauterey^b, Alex Bixel^{c,d}, Daniel Apai^{c,d} and Regis Ferriere^{b,e,f}

^a Observatoire de la Côte d'Azur, Université Côte d'Azur, CNRS, 96 boulevard de l'observatoire, F06304 Nice cedex 4, France

^b Institut de Biologie de l'École Normale Supérieure, ENS, Université Paris Sciences et Lettres, Paris, France

^c Department of Astronomy, The University of Arizona, Tucson, AZ 85721, USA

^d Lunar and Planetary Laboratory, The University of Arizona, Tucson, AZ 85721, USA

^e Department of Ecology and Evolutionary Biology, University of Arizona, Tucson, USA

^f International Research Laboratory for Interdisciplinary Global Environmental Studies (iGLOBES), CNRS, ENS, Université Paris Sciences et Lettres

E-mails: stephane.mazevet@oca.eu (S. Mazevet), aaffholder@arizona.edu, sauterey@biologie.ens.fr, abixel@arizona.edu, apai@arizona.edu, regisf@arizona.edu

Abstract. With thousands of exoplanets now identified, the characterization of habitable planets and the potential identification of inhabited ones is a major challenge for the coming decades. We review the current working definition of habitable planets, the upcoming observational prospects for their characterization and present an innovative approach to assess habitability and inhabitation. This integrated method couples for the first time the atmosphere and the interior modeling with the biological activity based on ecosystem modeling. We review here the first applications of the method to assess the likelihood and impact of methanogenesis for Enceladus, primitive Earth, and primitive Mars. Informed by these applications for solar system situations where habitability and inhabitation is questioned, we show how the method can be used to inform the design of future space observatories by considering habitability and inhabitation of Earth-like exoplanets around sun-like stars.

Résumé. Avec des milliers d'exoplanètes identifiées, la caractérisation des planètes habitables et l'identification potentielle de celles qui seraient habitées est un défi majeur pour les décennies à venir. Nous rappelons en premier lieu la définition des planètes habitables et les perspectives d'observation à venir pour leur caractérisation. Nous présentons ensuite une approche innovante pour évaluer l'habitabilité et l'habitation pour des systèmes extraterrestres. Cette méthode intégrée couple pour la première fois la modélisation de l'atmosphère et de l'intérieur planétaires avec l'activité biologique basée sur la modélisation des écosystèmes.

* Corresponding author.

Nous passons en revue ici les premières applications de cette approche pour évaluer la probabilité et l'impact de la méthanogénèse pour Encelade, la Terre primitive et Mars primitive. En se basant sur ces applications pour les situations du système solaire où l'habitabilité et l'habitation sont remises en question, nous montrons comment la méthode peut être utilisée pour éclairer la conception des futurs observatoires spatiaux en considérant l'habitabilité et l'habitation des exoplanètes semblables à la Terre autour d'étoiles semblables au Soleil.

Keywords. planets, exoplanets, habitable zone, habitable planets, habitability.

Mots-clés. planètes, exoplanètes, zone habitable, planètes habitables, habitabilité.

Note. Follows up on a conference-debate of the French Academy of Sciences entitled "Exoplanets: the new challenges" held on 18 May 2021, visible via

<https://www.academie-sciences.fr/fr/Colloques-conferences-et-debats/exoplanetes.html>.

Note. Fait suite à une conférence-débat de l'Académie des sciences intitulée "Exoplanètes : les nouveaux défis" tenue le 18 mai 2021, visible via

<https://www.academie-sciences.fr/fr/Colloques-conferences-et-debats/exoplanetes.html>.

Published online: 11 August 2023

A little more than 25 years after the discovery of the first exoplanet [1], we have now identified more than 5,000 objects ranging in size from mercury-like objects to ones that have several times the mass of Jupiter with orbital periods spanning from less than a day to several decades. This broad diversity of planets when considering their size, their composition or their orbital properties largely encompasses what is found in the solar system. Understanding this diversity as well as the nature of the objects detected is currently a major challenge in planetary science. It is generating an intense activity to design new observational strategies for either ground and space observatories as, at present, the majority of planets are detected indirectly, by quantifying their influence on their host stars. Using radial velocities or transit methods [2], the parameters of a given planet are poorly constrained, and are restricted to the mass, the radius and a few orbital parameters. The strongest constraints are obtained when these methods can be combined. Atmospheric characterization, that is the basis of our knowledge of the planets of the solar system, is currently very limited for exoplanets.

Atmospheric characterization of exoplanets has only been obtained in an handful of cases. This corresponds to either giant planets with short periods that can be characterized using transit spectroscopy [3] or, conversely, far-out planets in the giant-brown-dwarf continuum that can be accessed using direct imaging [4, 5]. The upcoming generation of instruments from either ground or space such as, for example, the SPHERE and GRAVITY upgrades [6, 7], the European Extremely Large Telescope (E-ELT), the James Web Space Telescope (JWST) [8] and the upcoming ARIEL mission [9] from ESA, aim at improving this situation by characterizing the atmosphere of smaller objects and at varying distance from their host star. While addressing various questions along the way, such as the atmospheric composition of giant planets, the nature of ocean worlds, of sub-neptunes and super-earths, the ultimate and long term goals of the next generation of instruments is to enable us to quantify the habitability of Earth-like planets and eventually identify inhabited ones. In this paper, we review the current status regarding the prospects for the characterization of habitable exoplanets and present an innovative framework to assess habitability and inhabitation on quantitative grounds so as to inform the design of the next generation of space observatories.

1. Current status on habitable planets

1.1. Definition of the habitable zone

Brought forward by H. Shapley more than seventy years ago [10], the concept of the *habitable zone* rests on the idea that there exists a region around each star where liquid water can be maintained at the surface of an Earth-like planet. The connection between habitability and liquid water is obviously related to the fact that life as we know it requires liquid water to thrive and develop. This definition of habitability relates to life that resembles what we find on Earth and relates to one of its basic constituent, water. It secondly conveys the idea that life is a surface event that, in turn, may potentially modify the atmospheric composition of the planet if present. Planets with liquid water in the subsurface and protected by an ice layer can also be described as habitable. They may exist outside the habitable zone that is now defined by the possibility of surface liquid water but will not be considered here as they are poor candidates for remote sensing based on atmospheric characterization.

The modern estimation of the boundaries of the habitable zone is obtained by using climate modeling for an atmosphere made of CO_2 , H_2O , and N_2 [11]. The inner edge is defined as the distance at which a planet develops a wet stratosphere and loses its water through photodissociation and the escape of hydrogen to space [11, 12]. It is the so-called water-loss limit where the planet enters a wet greenhouse runaway. It occurs before the hard greenhouse runaway limit where the atmosphere absorbs more energy than it can radiate back to space. In this case, the surface temperature rapidly increases beyond one thousand degrees and well above what can be deemed habitable. For today's solar system, these two limits are estimated to be at 0.97 AU and 0.99 AU using a 1-D climate modeling with a fully saturated troposphere and a cloud free atmosphere [12]. Numerous 3D climate modeling studies have refined these values (see below).

The outer edge of the habitable zone is set by the maximum greenhouse effect that can be obtained by continuously adding CO_2 in a H_2O - CO_2 atmosphere. This can occur when a planet experiences an active carbonate-silicate cycle that can lead to a continuous build-up of CO_2 . Beyond a certain amount of CO_2 in the atmosphere, which reaches around 7-8 bars, CO_2 condensates and Rayleigh scattering takes over the greenhouse effect. In this case, the planet experiences cooling instead of warming. 1-D modeling sets the outer limit of the habitable zone at 1.67 AU for today's sun [12]. Formally, the habitable zone could be extended outward assuming additional greenhouse gases, such as NH_3 and CH_4 , in the atmosphere but most gases will not significantly move the outer limit. The exception is hydrogen that can seriously enhance the greenhouse effect when considering dense atmospheres [13–16].

Similar 1-D climate calculations are used to estimate the boundaries of the habitable zone for other type of stars. These calculations take into account the fact that the luminosity of the star decreases with its mass while its emission spectrum shifts to the red and to larger wavelengths. As the stellar mass decreases, the habitable zone gets closer to the host star and enters a region where the planets are tidally locked (i.e., the planetary rotation and orbit are synchronized). This inner and outer limits obtained using climate calculations set what is called the conservative habitable zone. This estimate has been refined by considering additional greenhouse gases as mentioned above and using complex 3-D climate models such as 3D general circulation models (GCM). The latter take into account various effects such as cloud formation, atmospheric circulation, rotation rate. These 3-D estimates of the habitable zone are within 5 to 7 % of the 1-D ones for fast rotating planets like the Earth in the habitable zone of (F,G,K) stars. They predict much larger differences for tidally locked and slowly rotating planets that lay in the habitable zone of (K,M) stars. In this situation, 3-D modeling predicts the inner edge of the habitable zone much closer to their host star.

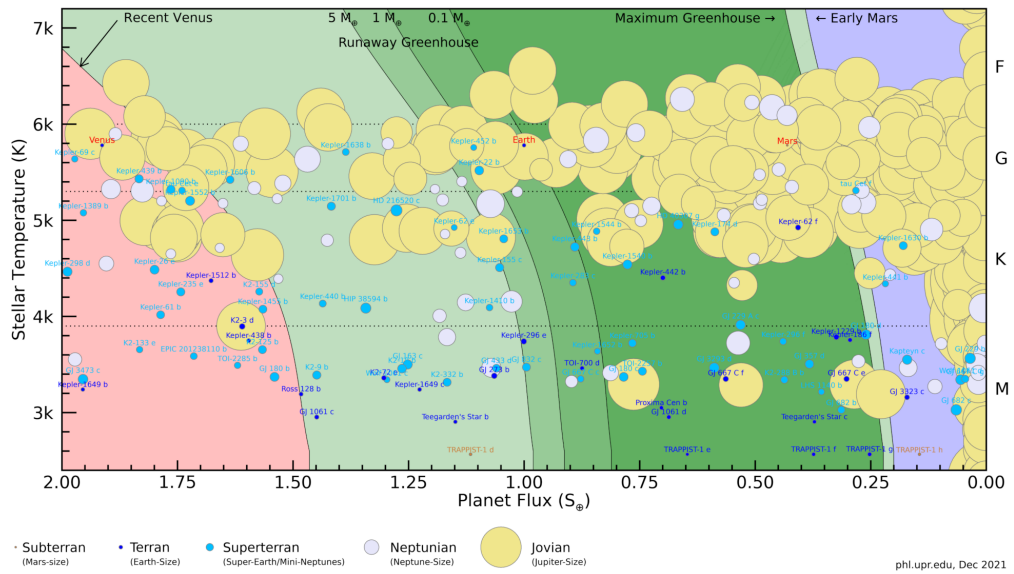


Figure 1. Distribution of the currently detected planets with the conservative and optimistic habitable zones as a function of stellar temperature of the host star and the flux received by the planet. The flux received is normalized to the Earth one. This plot is regularly updated and produced by the planetary habitability laboratory at the university of Puerto Rico www.phl.upr.edu.

This estimate of the conservative habitable zone, introduced by Kasting et al. [11], updated by Kopparapu et al. [12, 17] and augmented by 3-D modeling [18] is directly related to the modeling of the long term climate evolution of the inner planets of the solar system [10, 11]. As it might be perceived as too restrictive and prone to modeling shortcomings, it is often associated with another empirical estimate directly tied to observables associated to Venus and Mars. In this case, the optimistic inner edge of habitable zone rests on the observation that the age of Venus young cratering are estimated to be at about 0.7 Gyrs. This provides a lower limit to its water loss by either wet or greenhouse run away. Taking into account the sun luminosity at that time, this sets the boundary for the greenhouse runaway at 0.75AU. On the other side of the habitable zone, the surface of Mars suggests that water may have been present 3.8 Gyrs ago. Considering that the solar luminosity was 75% of its current value, this sets the outer boundary of the optimistic habitable zone at 1.75AU, past the estimate obtained using climate modeling, 1.69AU, suggesting that other greenhouse gases that CO_2 and H_2O were at play if primitive Mars was habitable [15].

1.2. The nature of the planets identified as potentially habitable

The previous section underlines that the habitable zone is not a planetary property but a region around a given star where planets are at the right distance from their host star to potentially sustain liquid water at their surface provided a given atmospheric composition is present. In this context, potentially habitable planets relates to planets that loosely resemble the Earth, made of iron and silicates and with a water content that can reach up to 50% in mass, and orbiting in the habitable zone of their host star.

This situation is illustrated in Figure 1 that shows a diagram elaborated by the planetary habitability laboratory at the university of Puerto Rico [19]. It displays the distribution of planets

in the habitable zone (see Section 1.1) detected by the end of 2021 with the habitable zone boundaries discussed in the previous section. The planets are shown as a function of their mass and are categorized following solar system counterparts. The continuum between subterran (Mars), terran (Earth-like), and superterran (Super-Earth-mini-Neptune) are arbitrarily divided in two categories. Terran planets represent objects with radius and mass respectively less than $1.6R_E$ and $3M_E$. Superterran on the other hand are defined with a radius and a mass greater than terran but lesser than respectively $2.5R_E$ and $10M_E$. These two broad categories can be associated to the dip in the size distribution identified in the population of exoplanets detected by the Kepler mission [20]. Analysis of the Kepler data shows a higher occurrence rate of planets at $1.3R_E$ and $2.4R_E$ with a valley at $1.8R_E$ suggesting that there is two distinct populations of planets. Further analysis of the mass-radius relationship of planets currently detected indicates that the first population matches Earth and Venus mean densities while the second population, with lower densities, have a higher fraction of volatiles and up to 50% of water [21]. The latter objects do not exist in the solar system and are sometimes also referred to as waterworlds [22].

Figure 1 shows that due to observational biases with current detection methods, no Earth-like planets have been detected so far in the conservative habitable zone around F or G type stars. Earth-like planets detected in the conservative habitable zone are around K-stars ($3500K < T < 5000K$) and M-stars ($T < 3500K$). There are 13 objects at present with a highest occurrence around M-stars. This number reaches 20 when considering the optimistic habitable zone. It can be extended to 55 when considering planets with a significant amount of water and categorized as superterran. This estimate of potentially habitable planets shows that so far, about 0.2 % of the planets detected are labeled potentially habitable if we consider Earth-like planets and a conservative definition of the habitable zone. This number increases to 1 % if one considers an optimistic definition of the habitable zone and planets stretching toward mini-neptunes.

The exact number of potentially habitable planets detected can vary depending on the precise criterium used. This is not an issue as it is commonly understood that this definition relates to planets that are potentially habitable and among which only a subset may finally turn out to be truly habitable. It should thus be understood as a way to identify targets for further investigation such as atmospheric characterization. Furthermore, habitability depends on other criteria than the mean density and the flux received from the host star. At first, the stellar luminosity increases during the star lifetime. We saw above that within the habitable zone, a planet will be habitable only if the atmosphere is suitable. For a planet to be habitable and remaining habitable during a significant fraction of time for life to develop requires that the atmospheric composition remains suitable [10, 11].

The build-up and long term evolution of the atmosphere of Earth-like planets is a process that is not fully constrained. It rests on an initial budget of volatiles, primary degassing during the magmatic state and the long term geophysical activity, i.e. the evolution of the interior structure, that involves degassing of various species and possibly various tectonic regimes. The situation is even more uncertain for the planets characterized as habitable at present as they are around M-dwarfs, tidally locked with a formation history and stellar conditions that largely depart from what we know on Earth. Furthermore, when considering habitability from an Earth perspective, it appears relevant to also consider its formation in the context of the history of the solar system [23], the low eccentricity of its orbit, its dynamical stability due to the moon, its rotation rate, interior processes allowing plate tectonics to occur and subsequently its long term carbonate-silicate cycle to name a few particular features. Whether all these particularities are necessary to make a planet habitable is an open question that the atmospheric characterization of exoplanets might help address in the coming decades [24].

1.3. *Upcoming prospects for observational characterization*

The atmospheric characterization of potentially habitable planets has been so far obtained for the TRAPPIST-1 system and for a very narrow IR band (1.1-1.7 μm) using the Hubble Space Telescope [25, 26]. The TRAPPIST-1 system consists of seven planets orbiting a M-dwarf star in a very compact configuration. The densities of these planets are rather comparable and are slightly lower than Earth's mean density [27]. These planets are clearly terrestrial in nature and three of them are in the habitable zone (d, e, f) [28]. The featureless spectra obtained using the Hubble space telescope could only rule out that the atmosphere of these planets were not made of primordial hydrogen. The limited spectral window available and the sensitivity of the instrument did not allow to identify other volatiles such as H_2O or CO_2 . The detection of these elements in the atmosphere of terrestrial planets, which can help validate the concept of habitability, and others, such as O_2 or CH_4 related to biological activity, is just starting.

The challenge ahead can be illustrated by considering the TRAPPIST-1 system in the era of the JWST. The distance of the TRAPPIST-1 system, 12pc, combined with the luminosity of the late M-dwarf star provides a first opportunity to probe the atmosphere of Earth-size terrestrial planets with three of them in the habitable zone. The characteristics of the planetary system suggest that transit spectroscopy could be performed for the seven planets detected so far if the instrument is performing as expected.

A consensus is now emerging that the atmospheric properties could be obtained by using between 10 to 100 transits if these planets have a significant atmosphere [29]. CO_2 can be potentially detected using about 10 transits in a cloud-free atmosphere. This goes up to 20-30 transits if the atmosphere is cloudy. The detection of H_2O is much more challenging if the planets resemble the Earth where the water is concentrated in the troposphere and is in small abundance at the altitude probed by transit spectroscopy. If the atmosphere is different, detection of water vapor is estimated to require at least 60 transits but without giving indication whether liquid water is present at the surface [30–32]. The JWST measurements can potentially give better constrains if the TRAPPIST-1 planets are entering a wet greenhouse runaway by detecting a strong massive oxygen atmosphere resulting from ocean lost. Hence, the prospects of assessing the habitability of TRAPPIST-1 planets using JWST might principally concern the inference of the lack of greenhouse runaway.

If we now turn to biosignatures, O_2 , that could constitute a biosignature as it is associated to oxygenic photosynthesis, would require more than 100 transits. Detection of CH_4 could be obtained with 10 transits for TRAPPIST-1e but its connection with biotic activities requires better constraints on the planetary context and to quantify the impact of biological activity on the planetary conditions to be conclusive [29, 33, 34]. With the TRAPPIST-1 system accessible 1/3 of the year and the number of possible transits representing a fraction of that time, 65 transits possible for planet b and 5 for planet e, this suggests that the atmospheric characterization of the TRAPPIST-1 system may require a significant fraction of the JWST lifetime. A few other systems presenting a comparable optimum configuration may be identified in the coming years but the identification of exoplanet habitability and potential biosignatures is unlikely with this observatory.

The situation will improve with extremely large telescopes (ELTs) that will start operating toward the end of the decade. ELTs will increase the number of targets accessible around M-dwarfs and maybe K type stars. It may provide a more precise characterization based not only on spectroscopy for transiting and reflected light measurements but also by using direct imaging. It remains unlikely, however, that observations performed on a single or a few planets will provide compelling evidence of habitability or inhabitation of Earth-like planets [35]. This is due to the difficulties at interpreting a single or even a few observations that necessarily rest on refined mod-

eling. Following [36] and others, we argue here that definite proof regarding habitability and inhabitation requires a statistical approach to identify trends in population of planets that will enable us to gain compelling evidence for the existence of worlds that are habitable and inhabited. This task might be achieved using the next generation of space observatories based on direct imaging. This corresponds to mission concepts such as the Large UV/Optical/IR Surveyor (LUVOIR) [37] or HABEX [38] that aimed at providing a statistically meaningful sample of objects to probe. The design of the next generation space observatories is underway and there is currently a need to define the requirements these instruments should achieve to test unambiguously habitability and inhabitation of extrasolar planets [39]. To contribute to this question, we consider in next section an innovative approach that addresses the question of habitability, the validation of the habitable zone concept and the question of biosignatures by considering on the same footing the planetary context and the hypothetical biological activity.

2. An integrated approach to assess habitability and inhabitation

Following [35, 36, 39, 40], we support here the idea that the identification of habitability and inhabitation should be achieved by identifying trends in exoplanet populations rather than aiming at a precise characterization of a given planet. Considering the question of biosignatures, we propose that it should be approached by directly coupling the planetary environment with the potential biological activity to account for the viability of potential metabolisms and to include their impact on the atmospheric composition. This contrasts with more conventional approaches that aim at looking at the precise identification of a constituent related to biological activities for a single planet. The case of oxygen that relates to oxygenic photosynthesis illustrates best such an approach [41]. Secondly, we argue that it should be approached statistically as a trend in a population of habitable exoplanets. This formally reduces the possibilities of false positives as it addresses the question of inhabitation of habitable planets as one of their global properties rather than the particularity of a single object.

To bring this approach on a quantitative basis, we developed a model that couples a 1-D photochemical-climate model, an interior model based on a time-dependent parameterization of the carbonate-silicate cycle [42], and an Earth-based ecosystem model to account for the biological activity [34]. This approach expands on the work of Karecha et al. [43] who developed an atmosphere-ecosystem model of the Archean Earth [43]. It also follows on the work of Lehmer et al. [35] who couples a 1-D climate model with a parameterization of the carbonate-silicate cycle to assess trend in population of exoplanets to validate the habitable zone concept. It expands on this work by providing a quantitative modeling of the biological activity that is consistent with the planetary environment. Furthermore, it provides an atmospheric composition that is in turn impacted by the biological activity. To illustrate the features of the approach and demonstrate its usefulness for informing mission designs aiming at identifying habitability and biosignatures for exoplanet populations, we applied it to the case of Enceladus [44], primitive Earth [34] and primitive Mars [45] and to the properties of Earth-like exoplanets around G-type stars [46].

2.1. *Enceladus and the Cassini observations*

Multiple fly-bys of Enceladus by the Cassini mission confirmed that a global ocean is present [47, 48]. The mass spectrometer onboard the spacecraft also revealed the presence of H_2 and CH_4 among other gases in plumes of gas and ice grains ejected into space at Enceladus's south pole. The detection of H_2 was interpreted as a signature of hydrothermal activity [49]. On Earth, alkaline hydrothermal activity produces H_2 and CH_4 among other gases. In Affholder et al. [44], we assume that hydrothermal circulation on Enceladus has its origin in a global ocean harboring

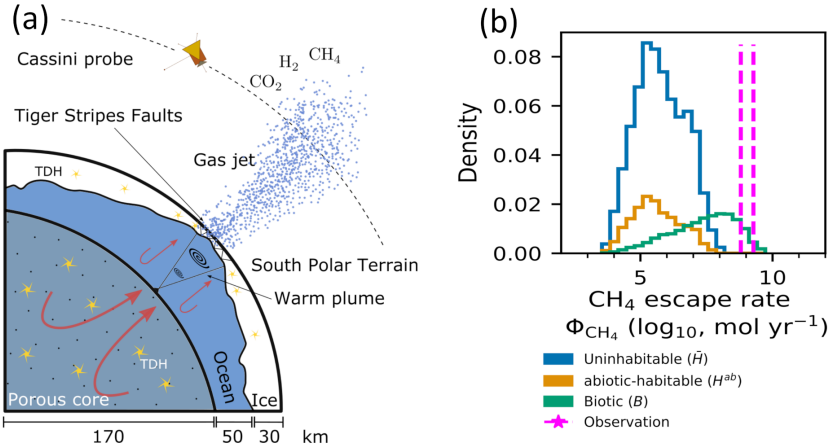


Figure 2. (a) schematic representation of the interior of Enceladus. (b) Density distribution of pseudo-data generated by model simulations for the inferred CH₄ flux (adapted from [44]).

hydrothermal vents and, in turn, that the composition of the plume provides information on the deep-sea vents. Figure 2(a) shows the interior structure hypothesized for Enceladus with a core heated by tidal dissipation and ocean plumes produced by buoyancy and Coriolis forces [50, 51]. In this configuration, H₂ can be produced in Enceladus core by serpentinization [50] while CH₄ might originate from the abiotic conversion of H₂ and CO₂, a primordial stock, or organic molecules present in the core that are pyrolysed.

The biotic origin of CH₄ in Enceladus plume has also been largely discussed due to the possible similarities with the Earth's hydrothermal vents [52]. On Earth, these vents host chemoautotrophic single-celled organisms -called chemotrophs- that use thermodynamical disequilibrium generated by chemical gradients rather than sunlight as energy sources. Chemotrophic organisms use redox potential as energy source for biomass production. They convert H₂ and CO₂ into CH₄ and could significantly contribute to the production of CH₄ detected in Enceladus plume. To test whether these organisms can sustain Enceladus's environment, grow and produce amounts of CH₄ compatible with the abundance in the plumes, an ecological model of methanogenesis constrained by the interior environment was developed. The ecological model describes the biomass dynamics of a generic H₂-based methanogenic metabolisms that represent archaea that have been found in Earth's hydrothermal vents. The model is first based on a dependence of the cell metabolism on environmental conditions through the thermodynamics and kinetics of the catabolic (energy-providing) reaction. Catabolic reaction represents the set of reactions a cell uses to maintain itself and grow. The cell population dynamics is described as

$$\frac{dN}{dt} = N(q_{ana} - d) \quad (1)$$

$$\frac{dC_i}{dt} = F(C_i) + NB^* q_{cat} Y_i^{cat} \quad (2)$$

where N is the surface density of the number of individuals in the population ($\text{kg}^{-1}\text{m}^{-2}$), d (s^{-1}) is the baseline death rate, B^* (mol_{c_x}) is the steady-state internal cell biomass and Y_i^{cat} the stoichiometry of the reactants and the products involved. q_{ana} is the temperature dependent rate of net biomass build-up which sets in turn the division rate. This term depends on the Gibbs free

energy required to produce 1 mol of biomass, the Gibbs free energy dissipated to maintain the cell alive, and q_{cat} the temperature-dependent rate at which the cell runs the catabolic reaction. $F(C_i)$ is the forcing term setting the concentration of species i , C_i , given by the modelisation of the planetary environment. In the case of Enceladus, the H_2 -based methanogenic population is assumed to be located at the core-ocean interface and $F(C_i)$ represents the concentration calculated in a mixing layer between the hydrothermal fluid and the oceanic water.

This model describes the dynamics of a population of H_2 -based methanogens that convert H_2 coming from serpentinization with CO_2 present in the ocean to produce CH_4 . The population can reach different steady states depending on temperature and species concentration. This, in turn, sets the efficiency of H_2 consumption and conversion rate into CH_4 . It also provides a definition of habitability that corresponds, in this case, to the physical and chemical conditions allowing for a H_2 -based methanogen population to grow and reach a steady state. This is defined as the abiotic-habitable conditions. When the population reaches a steady state, it formally modifies the chemical and physical planetary conditions. This is the biotic case that considers the planetary environment inhabited and modified by the population of H_2 -based methanogens.

This geochemical and ecological modeling then feeds a statistical hypothesis testing framework by assuming that temperature and the composition of the hydrothermal fluid and ocean (estimated close to 275K) are drawn from prior distributions that encompass uncertainties on their estimates. This includes uncertainties for the serpentinization rate, composition of the ocean for the species of interest and the temperature at the core-boundary. From these prior distributions, input parameters can be drawn for the dynamical model that defines a pseudo-data distribution in the space of observables that corresponds, in the current case, to the flux of H_2 and CH_4 in the plume. Figure 2 shows the distribution of model outputs for the flux of CH_4 obtained by running 50,000 simulations. The model outputs are arranged in the three categories described above, uninhabitable, abiotic habitable and biotic depending on whether a methanogen population can grow and reach a steady state. When compared with the Cassini measurements, Figure 2 shows that the observed flux of CH_4 is not reproduced by our abiotic model, but is well within predictions under the assumption of biotic methane production at the seafloor.

This result does not imply that there is an identification of an H_2 -based methanogen population at the core-ocean boundary. It indicates that given the abiotic sources of H_2 and CH_4 considered within the planetary model, the fluxes of CH_4 and H_2 observed are compatible with those expected when an H_2 -based methanogen population is present given the abiotic situation described. This assumes, first, that the probability of life to emerge for these conditions is significant and, secondly, that no other abiotic process can change significantly the production of H_2 and CH_4 modeled. While these two hypothesis can be challenged, and other can be added, this application illustrates that the framework proposed allows us to do so within the bounds of a quantitative approach where the abiotic and biotic processes are treated on an equal footing and within an integrated approach resting on a direct coupling between the two. We argue that this is a necessary step to identify habitable conditions and design experiments to identify biological activity beyond Earth.

2.2. Primitive Earth and primitive Mars

In Sauterey et al. [34], we apply the approach to quantify the effect of methanogenesis on the atmosphere of primitive Earth. Figure 3 shows that this extends the work for Enceladus described above in several ways. First, the ecosystem consists of not one but several populations of chemotrophic organisms that can develop in the primitive ocean that covers part of the surface of the primitive Earth. Chemotrophs are expected to be the first organisms to develop on Earth, maybe several hundreds millions of years before the apparition of anoxygenic photosynthesis.

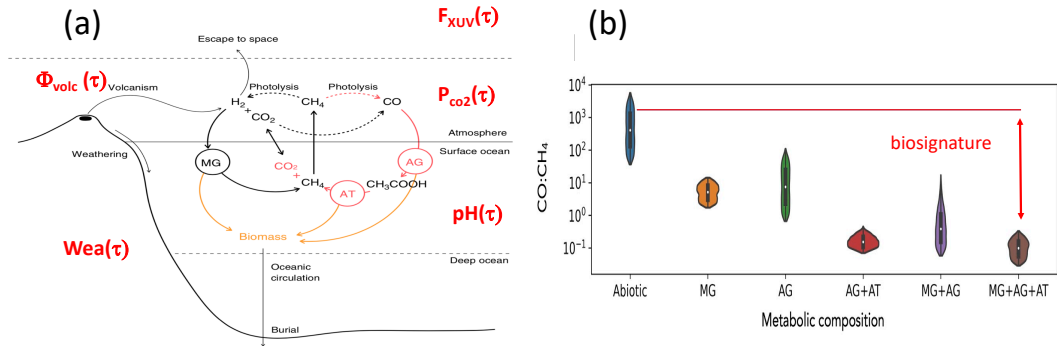


Figure 3. (a) Schematic representation of the Earth populated by a basic ecosystem involved in methanogenesis. The parameters that vary during the planet lifetime, τ , are indicated in red. $\phi_{volc}(\tau)$ stand for the volcanic outgassing, $Wea(\tau)$ represents weathering, $P_{CO_2}(\tau)$ the CO_2 surface pressure, $pH(\tau)$ the ocean pH, and $F_{XUV}(\tau)$ the stellar flux.

(b) Distributions of the $CO:CH_4$ ratio for each plausible evolutionary scenario involving the basic metabolisms considered in the basic ecosystem.

While this hypothesis is still debated, phylogenetic analysis combined with isotopic evidence suggests that this primitive ecosystem may have consisted of H_2 -based methanogens (MG), CO -based autotrophic acetogens (AG), and methanogenic acetotrophs (AT). To quantify the effect of methanogenesis on anoxic Earth conditions, we considered these three metabolisms as well as anaerobic oxidation of methane (MT) as a basic ecosystem.

The mean composition and temperature of the ocean and the atmosphere are obtained by using a climate and a photochemical models coupled to a simple temperature dependent carbonate-silicate cycle [42]. The latter computes the evolution of atmospheric CO_2 , dissolved inorganic carbon (CO_2 , HCO_3^- and CO_3^{2-}) and pH in the ocean by taking into account outgassing from volcanos and mid-oceanic ridges, continental silicate weathering, dissolution of basalt in the seafloor, and oceanic chemistry, as sources and sinks of CO_2 . This coupled ecosystem-planetary model is solved by considering that the atmospheric temperature and composition and vertical structure reach equilibrium instantly compared to the biological and geological time scales. Secondly, it considers that the dynamics of the ecosystem that occurs in days to years is much faster than the geological time scale (10^3 - 10^6 yrs). As previously, the ecosystem dynamics is obtained by considering fixed environmental conditions but given, in this case, by a forcing term, $F(C_j)$, that results from ocean circulation and atmosphere-ocean exchanges and calculated using a stagnant boundary layer model [43]. The steady-state is obtained by considering the biogenic fluxes between the surface ocean, the atmosphere, and the deep ocean iteratively within the planetary model. Once the global steady-state is obtained it represents the coupling between the biotic activity that modifies the planetary conditions that, in turn, feeds back into the efficiency of the biotic activity.

Applied to the case of primitive Earth, we first found that chemotrophic activity had a significant impact on the surface conditions of the anoxic Earth well before nonoxygenic photosynthesis appeared and despite a rather small biomass production. The impact is the strongest on short time scale, 100Myrs, when a new metabolism is introduced or removed from the atmosphere. This can lead to transient warming or ice ball events. On longer time scales, the carbonate-silicate cycle that includes the effect of the biological activity through its dependence on temperature keeps the surface conditions habitable with temperature close to what is expected without

biological activity but with a different state for the atmospheric composition. The imprint of the individual metabolism on the atmospheric composition and surface temperature is clear but converges to a common state when the ecosystem becomes more complex and several metabolisms are included. Figure 3 (b) illustrates this situation when considering the CO/CH₄ ratio of these two species in the atmosphere. We see that the atmospheric composition changes as soon as a metabolism is included but the footprint of the individual metabolism washes out when the ecosystem becomes more complex to leave a clear signature between abiotic and biotic biospheres.

This study shows that the atmosphere of the anoxic Earth was modified as soon as life emerged. The direct coupling between the ecosystem dynamics and the planetary conditions further allowed us to quantify how methanogenesis impacted planetary conditions, showing that Earth remained habitable on geological time scale. A similar model applied to the case of primitive Mars showed that methanogenesis likely drove Mars out of habitability if these primitive metabolisms appeared [45]. This quantitative modeling suggests a very different outcome between the Earth and Mars upon the potential apparition of methanogenesis, stressing the need for an integrated approach to address habitability and inhabitation on the same footing. This also shows that habitability is, to some extent, determined by inhabitation. The common steady state obtained for primitive Earth in the biotic case, distinct from the abiotic one, and reached as the ecosystem becomes more complex, suggests that a biosignature can be defined. As shown in Figure 3 (b), this biosignature is rather independent of the particular characteristic of the metabolisms involved suggesting that this could be used as a biosignature of methane cycling biospheres for future surveys of habitable planets.

2.3. *Earth-like population around G-type stars*

We now consider the case of Earth-like planets around G-type stars to illustrate how an integrated ecosystem-planetary model can be used to inform the design of future space telescopes aiming at characterizing habitability and inhabitation of extrasolar planets. We saw in the first section that the definition of the conservative habitable zone rests on climate modeling that embodies the greenhouse effects of H₂O and CO₂ present in the atmosphere. While not explicitly included, it assumes that a carbonate-silicate cycle that regulates the amount of atmospheric CO₂ needed to keep the planet habitable exists as the stellar luminosity increases during the host star lifetime [10, 11]. By demonstrating that a population of Earth-like planets follows the general concentration of CO₂ anticipated would first validate the concept of habitable zone. It would secondly indicate that these planets may have liquid water on their surface as the carbonate-silicate cycle as we experience it on Earth depends on having liquid water at the surface. Incidentally, it would also confirm how the Earth stayed habitable for 4 billions years (4Gyrs). This approach was suggested by Lehmer [35] and implemented in a very simplified way to validate the habitable zone concept.

The integrated ecosystem-planetary model we developed for the case of primitive Earth allows us to go a step further by not only considering the evolution of the CO₂ concentration as a function of time but by also following the complete evolution of the biosphere coupled to the carbonate-silicate cycle. The results shown in the previous section indicate that this may be necessary as habitability and inhabitation are strongly coupled with inhabitation modifying habitability. This approach also provides an appealing way to identify inhabited planets as biosignatures, such as the CO/CH₄ ratio mentioned above, can be used and interpreted by fully accounting for the planetary context.

Figure 4 shows preliminary results considering a primitive ecosystem consisting of a single and the same generic methanogen as the one used for the case of Enceladus. Each point shown

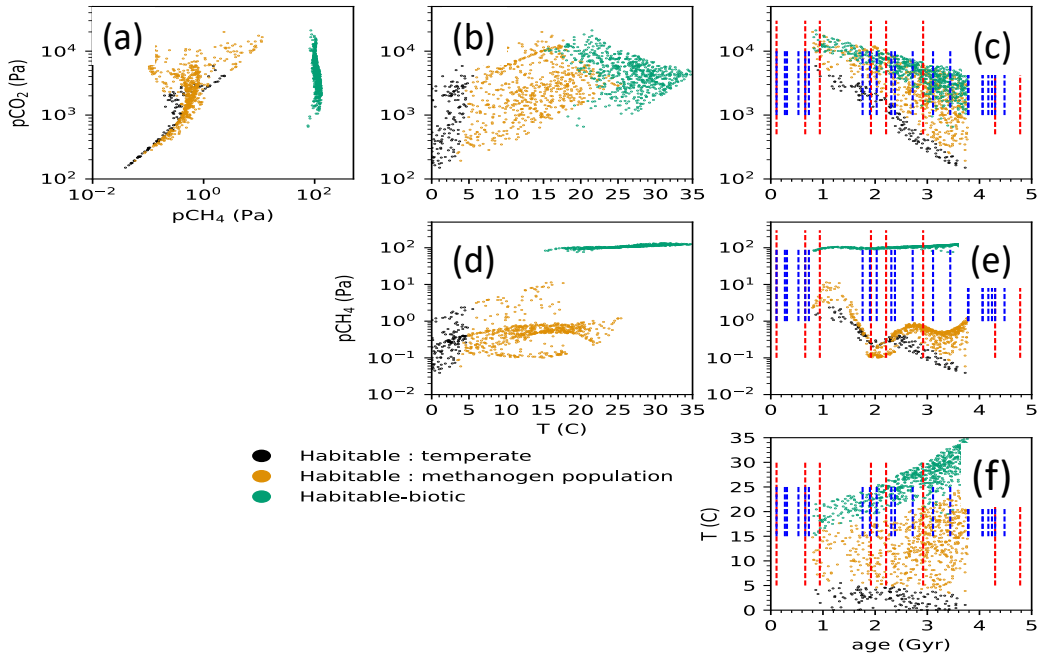


Figure 4. Results of simulated steady state atmospheres displayed as a function of the CO_2 surface pressure, P_{CO_2} , CH_4 surface pressure P_{CH_4} , surface temperature, T , and time, t . The red and blue lines indicate Earth-like planets with densities respectively close to the Earth ($0.9 < \rho < 1.1$) and defined as terran (see Section 1.1) and anticipated as detectable using an instrument configuration corresponding to LUVUOIR-A.

in Figure 4 corresponds to a complete simulation involving a similar calculation as performed for the case of primitive Earth, coupling photochemistry, climate, the carbonate-silicate cycle and ecosystem modelings and taking into account the variation of volcanic outgassing, weathering and solar luminosity over 4.5 Gyrs as indicated in Figure 3. We note that several technical adjustments are needed to achieve this generalization of the primitive Earth model discussed above over 4.5 Gyrs [46]. Most of them remove simplifying assumptions for the atmosphere-ocean-ecosystem model that are no longer valid when considering the large parameter space explored over such a long time scale, τ .

In Figure 4, the simulations are displayed in three categories. The simulations leading to a surface temperature above 273K are tagged as habitable-temperate as surface temperature is the only criteria used. Following what was done for Enceladus, simulations where a methanogen population can reach a steady state are tagged as habitable for the methanogen population. This represents a fraction of the habitable-temperate set as in addition to temperature, the ocean composition enters in defining the viable conditions for methanogens. Finally, the third set of simulations, habitable-biotic, represents the conditions where the ecosystem activity feeds back into the atmospheric composition. It represents the steady state reached by the ecosystem-planetary system at a given time, τ , given by the stellar luminosity, volcanic outgassing and weathering. The latter two are obtained by the parameterization of the Earth carbonate-silicate cycle [42] while the variation of stellar luminosity and spectrum follow the parameterization of Claire et al. [53]. We note that each simulation point is calculated independently.

Figure 4 shows the variation of the surface temperature and of the CO_2 and CH_4 surface pressures as a function of time and corresponding to the three sets defined above. We see in

Figure 4 (c) that the amount of CO_2 decreases as time evolves and the stellar luminosity increases to maintain habitable conditions. We note that the Sun luminosity increases by 25% over 4 Gyrs in these simulation sets. This trend in the atmospheric concentration of CO_2 as a function of time represents the effect of the carbonate-silicate cycle. This variation also translates into a varying concentration of CO_2 across the habitable zone. Figure 4 (e) shows that the methanogenic population brings an almost constant increase of CH_4 in the atmosphere. This biogenic activity is associated to an increase in surface temperature that can be seen in Figures 4 (d)-(f) due to the greenhouse effect of CH_4 . Inspection of Figure 4 indicates that clear trends exist for the evolution of the atmospheric concentration of CO_2 and CH_4 over time that may allow us to identify habitability and inhabitation in population of exoplanets. We note that habitability and inhabitation can be accessed independently by considering respectively the habitable temperate and habitable-biotic sets.

If we take the history of life on Earth and its impact on the atmospheric composition of the planet as a template, biogenic CH_4 due to chemotrophic activity and non-oxygenic photosynthesis was dominant for more than 1 Gyrs. It was followed by a rise in oxygen related to the apparition of oxygenic photosynthesis in two steps, with detectable amount in the atmosphere only 800Myrs ago. The trends identified in this preliminary calculation correspond to planets that exhibit a carbonate-silicate cycle similar to the one experienced by the Earth and a methanogenic population pertaining over 4 Gyrs without the emergence of non-oxygenic and oxygenic photosynthesis. These preliminary simulations can be expanded to explore more thoroughly the parameter space when chemotrophic metabolisms are at play. Photosynthetic metabolisms could be formally included in the approach but require substantial modifications of the ecosystem formalism. The simulations show nevertheless that priors can be built to be used in a Bayesian analysis scheme using a population of potentially habitable planets.

Figures 4 (c)-(e)-(f) illustrate this approach by displaying the exoplanet yield for Earth-like planets around G-type stars expected from the next generation of space telescopes. The sets of exoplanets shown are obtained by using the Bioverse scheme [39, 40] and considering a configuration similar to the LUVOIR-A mission concept [37]. The Bioverse scheme simulates planetary systems for host stars in the solar neighborhood based on the *Kepler* statistics [54, 55]. The first set displayed in Figure 4 corresponds to planets anticipated in the habitable zone, with densities between 0.9 and 1.1 the Earth one, and potentially detectable using direct imaging. This set corresponds to planets very close to the Earth and could be associated to Earth twins. At first glance, these planets would have a higher probability of displaying a carbonate-silicate cycle similar to the Earth. The second set considers a less restrictive definition and corresponding to the one given in Section 1.2 to define terran planets. We see in Figure 4 that considering planets with densities very close to the Earth, the detection of only eight planets are anticipated with this particular telescope configuration. This number significantly increases when considering planets with a less restrictive density criteria. These precise numbers may be refined in the near future as more surveys come along but it gives a good estimate of the number of candidates that can be expected. Considering that the space observatory has the ability to detect these levels of atmospheric CO_2 and CH_4 , Figure 4 shows that the number of planets anticipated with a configuration corresponding to LUVOIR-A will likely be too low to identify a trend in the variation of CO_2 as a function of time for planets with densities very close to the Earth one. The configuration of the LUVOIR-A mission concept may, in contrast, be sufficient to identify methanogenesis if all the candidates display a constant and similar level of CH_4 or by considering planets defined as terran with physical properties departing from Earth twins.

This example illustrates how these studies can be used to design instruments and devise observational strategies aiming at identifying trends in populations of exoplanets. For example, the carbonate-silicate cycle as parameterized for the Earth depends on the ability of a planet to main-

tain liquid water at its surface. Detecting trend in CO₂ as displayed in figure 4 instead of water in the atmosphere are two different approaches that could formally be used to identify habitable planets. This leads to two different designs for the space observatory. Furthermore, when considering the atmospheric concentration of CO₂ of a population of planets in the habitable zone of G-type star and with densities close to the Earth, we see that the statistical set expected is too limited when considering the configuration of the LUVOIR-A mission concept. This can be overcome by considering a radically different approach for the design of the space observatory [56]. Conversely, the planet sample can be expanded by considering a less restrictive definition of Earth-like planets to include a larger variation in mass, radius and density as displayed in Figure 4. This, however, requires that the current modelisation folds in the dependence of the carbonate-silicate cycle on these parameters to identify trends. Alternatively, it can also be approached by using a larger set of stars involving different types and considering luminosity instead of time. Considering planets with a carbonate-silicate cycle driven by different geophysical regimes such as plaque tectonics like on Earth or a stagnant lid regime like on Venus may also devise a better observational strategy than considering a log-linear relationship between luminosity and CO₂ concentration as suggested in [35]. Overall, we see that the ecosystem-planetary model developed used in combination with the Bioverse simulations provides a powerful tool to address these questions quantitatively and progress toward the identification of habitable and inhabited planets.

3. Summary

The characterization of habitable planets and the possible detection of biotic activity is a major challenge for the coming decades. It will likely require the development of a new generation of space telescope optimized to identify trends in population of exoplanets rather than focused on the precise characterization of a few objects. The design as well as the future analysis of these experiments require a new generation of models that integrate the coupling between the potential biotic activity, the atmospheric and interior evolution of terrestrial planets that expand beyond the Earth size and density. We develop such an approach that couples an Earth-based ecosystem and planetary modeling. We demonstrated that it is applicable to identify biotic activity and quantify its effect on habitability for Enceladus, primitive Earth and primitive Mars, as well as for a population of Earth-like planets around G-type stars. The latter represents a preliminary analysis that can be expanded in several directions to assess trends in population of exoplanets that can potentially bring the concept of habitable planets to observational confirmation.

Conflicts of interest

The authors have no conflict of interest to declare.

Acknowledgments

The results reported herein benefited from collaborations and/or information exchange within the program “Alien Earths” (supported by the National Aeronautics and Space Administration under Agreement No. 80NSSC21K0593) for NASA’s Nexus for Exoplanet System Science (NExSS) research coordination network sponsored by NASA’s Science Mission Directorate.

References

- [1] M. Mayor, D. Queloz, “A Jupiter-mass companion to a solar-type star”, *Nature* **378** (1995), no. 6555, p. 355-359.

- [2] M. Perryman, *The Exoplanet Handbook*, 2nd ed., Cambridge University Press, 2018.
- [3] D. K. Sing, J. J. Fortney, N. Nikolov *et al.*, “A continuum from clear to cloudy hot-Jupiter exoplanets without primordial water depletion”, *Nature* **529** (2016), no. 7584, p. 59-62.
- [4] B. Charnay, M. Bonnefoy, A. Boccaletti, G. Chauvin, S. Lacour, M. Nowak, “Characterization of exoplanetary atmospheres with VLT-SPHERE”, in *SF2A-2019: Proceedings of the Annual meeting of the French Society of Astronomy and Astrophysics* (P. Di Matteo, O. Creevey, A. Crida *et al.*, eds.), 2019.
- [5] J.-L. Beuzit, A. Vigan, D. Mouillet *et al.*, “SPHERE: the exoplanet imager for the Very Large Telescope”, *Astron. Astrophys.* **631** (2019), article no. A155.
- [6] A. Boccaletti *et al.*, “SPHERE+: Imaging young Jupiters down to the snowline”, *preprint*, arXiv:2003.05714, 2020.
- [7] GRAVITY Collaboration, S. Lacour *et al.*, “First direct detection of an exoplanet by optical interferometry. Astrometry and K-band spectroscopy of HR 8799 e”, *Astron. Astrophys.* **623** (2019), article no. L11.
- [8] J. P. Gardner, J. C. Mather, M. Clampin *et al.*, “The James Webb Space Telescope”, *Space Sci. Rev.* **123** (2006), no. 4, p. 485-606.
- [9] G. Tinetti, P. Drossard, P. Eccleston *et al.*, “A chemical survey of exoplanets with ARIEL”, *Exp. Astron.* **46** (2018), no. 1, p. 135-209.
- [10] D. C. Catling, J. F. Kasting, *Atmospheric Evolution on Inhabited and Lifeless Worlds*, Cambridge University Press, 2017.
- [11] J. F. Kasting, D. P. Whitmire, R. T. Reynolds, “Habitable Zones around Main Sequence Stars”, *Icarus* **101** (1993), no. 1, p. 108-128.
- [12] R. K. Kopparapu, R. M. Ramirez, J. F. Kasting *et al.*, “Habitable Zones around Main-sequence Stars: New Estimates”, *Astrophys. J.* **765** (2013), no. 2, article no. 131.
- [13] D. J. Stevenson, “Life-sustaining planets in interstellar space?”, *Nature* **400** (1999), no. 6739, p. 32.
- [14] R. Pierrehumbert, E. Gaidos, “Hydrogen Greenhouse Planets Beyond the Habitable Zone”, *Astrophys. J. Lett.* **734** (2011), no. 1, article no. L13.
- [15] R. M. Ramirez, R. K. Kopparapu, M. E. Zuger, T. D. Robinson, R. Freedman, J. F. Kasting, “Warming early Mars with CO₂ and H₂”, *Nat. Geosci.* **7** (2014), no. 1, p. 59-63.
- [16] R. M. Ramirez, L. Kaltenegger, “A Volcanic Hydrogen Habitable Zone”, *Astrophys. J. Lett.* **837** (2017), no. 1, article no. L4.
- [17] R. K. Kopparapu, R. M. Ramirez, J. SchottelKotte, J. F. Kasting, S. Domagal-Goldman, V. Eymet, “Habitable Zones around Main-sequence Stars: Dependence on Planetary Mass”, *Astrophys. J. Lett.* **787** (2014), no. 2, article no. L29.
- [18] J. Leconte, F. Forget, B. Charnay, R. Wordsworth, A. Pottier, “Increased insolation threshold for runaway greenhouse processes on Earth-like planets”, *Nature* **504** (2013), no. 7479, p. 268-271.
- [19] Planetary Habitability Laboratory, University of Puerto Rico at Arecibo, <https://phl.upr.edu/home>.
- [20] B. J. Fulton, E. A. Petigura, A. W. Howard *et al.*, “The California-Kepler Survey. III. A Gap in the Radius Distribution of Small Planets”, *Astron. J.* **154** (2017), no. 3, article no. 109.
- [21] L. Zeng, S. B. Jacobsen, D. D. Sasselov *et al.*, “Growth model interpretation of planet size distribution”, *Proceedings of the National Academy of Science* **116** (2019), no. 20, p. 9723-9728.
- [22] S. Mazevet, A. Licari, G. Chabrier, A. Y. Potekhin, “Ab initio based equation of state of dense water for planetary and exoplanetary modeling”, *Astron. Astrophys.* **621** (2019), article no. A128.
- [23] S. N. Raymond, A. Izidoro, “Origin of water in the inner Solar System: Planetesimals scattered inward during Jupiter and Saturn’s rapid gas accretion”, *Icarus* **297** (2017), p. 134-148.
- [24] D. Apai, F. Ciesla, G. D. Mulders *et al.*, “A comprehensive understanding of planet formation is required for assessing planetary habitability and for the search for life”, *preprint*, arXiv:1803.08682, 2018.
- [25] J. de Wit, H. R. Wakeford, M. Gillon *et al.*, “A combined transmission spectrum of the Earth-sized exoplanets TRAPPIST-1 b and c”, *Nature* **537** (2016), no. 7618, p. 69-72.
- [26] J. de Wit, H. R. Wakeford, N. K. Lewis *et al.*, “Atmospheric reconnaissance of the habitable-zone Earth-sized planets orbiting TRAPPIST-1”, *Nat. Astron.* **2** (2018), p. 214-219.
- [27] E. Agol, C. Dorn, S. L. Grimm, A. H. M. J., V. Van Grootel *et al.*, “Refining the Transit-timing and Photometric Analysis of TRAPPIST-1: Masses, Radii, Densities, Dynamics, and Ephemerides”, *Planet. Sci. J.* **2** (2021), article no. 1.
- [28] M. Gillon, A. H. M. J. Triard, B.-O. Demory *et al.*, “Seven temperate terrestrial planets around the nearby ultracool dwarf star TRAPPIST-1”, *Nature* **542** (2017), no. 7642, p. 456-460.
- [29] M. Gillon, V. S. Meadows, E. Agol *et al.*, “The TRAPPIST-1 JWST Community Initiative”, *Bulletin of the American Astronomical Society* **52** (2020), no. 2, article no. 0208.
- [30] A. P. Lincowski, J. Lustig-Yaeger, V. S. Meadows, “Observing Isotopologue Bands in Terrestrial Exoplanet Atmospheres with the James Webb Space Telescope: Implications for Identifying Past Atmospheric and Ocean Loss”, *Astron. J.* **158** (2019), no. 1, article no. 26.
- [31] J. Lustig-Yaeger, V. S. Meadows, A. P. Lincowski, “The Detectability and Characterization of the TRAPPIST-1 Exoplanet Atmospheres with JWST”, *Astron. J.* **158** (2019), no. 1, article no. 27.
- [32] R. K. Kopparapu, E. T. Wolf, V. S. Meadows, “Characterizing Exoplanet Habitability”, in *Planetary Astrobiology* (V. S. Meadows, G. N. Arney, B. E. Schmidt, D. J. Des Marais, eds.), University of Arizona Press, 2020, p. 449-476.

- [33] J. Krissansen-Totton, R. Garland, P. Irwin, D. C. Catling, “Detectability of Biosignatures in Anoxic Atmospheres with the James Webb Space Telescope: A TRAPPIST-1e Case Study”, *Astron. J.* **156** (2018), no. 3, article no. 114.
- [34] B. Sauterey, B. Charnay, A. Affholder, S. Mazevet, R. Ferrière, “Co-evolution of primitive methane-cycling ecosystems and early Earth’s atmosphere and climate”, *Nat. Commun.* **11** (2020), article no. 2705.
- [35] O. R. Lehmer, D. C. Catling, J. Krissansen-Totton, “Carbonate-silicate cycle predictions of Earth-like planetary climates and testing the habitable zone concept”, *Nat. Commun.* **11** (2020), article no. 6153.
- [36] J. L. Bean, D. S. Abbot, E. M.-R. Kempton, “A Statistical Comparative Planetology Approach to the Hunt for Habitable Exoplanets and Life Beyond the Solar System”, *Astrophys. J. Lett.* **841** (2017), no. 2, article no. L24.
- [37] The LUVOIR Team, “The LUVOIR Mission Concept Study Final Report”, *preprint*, arXiv:1912.06219, 2019.
- [38] B. S. Gaudi, S. Seager, B. Mennesson *et al.*, “The Habitable Exoplanet Observatory (HabEx) Mission Concept Study Final Report”, *preprint*, arXiv:2001.06683, 2020.
- [39] A. Bixel, D. Apai, “Bioverse: A Simulation Framework to Assess the Statistical Power of Future Biosignature Surveys”, *Astron. J.* **161** (2021), no. 5, article no. 228.
- [40] A. Bixel, D. Apai, “Testing Earthlike Atmospheric Evolution on Exo-Earths through Oxygen Absorption: Required Sample Sizes and the Advantage of Age-based Target Selection”, *Astrophys. J.* **896** (2020), no. 2, article no. 131.
- [41] L. Kaltenegger, “How to Characterize Habitable Worlds and Signs of Life”, *Annu. Rev. Astron. Astrophys.* **55** (2017), no. 1, p. 433-485.
- [42] J. Krissansen-Totton, D. C. Catling, “Constraining climate sensitivity and continental versus seafloor weathering using an inverse geological carbon cycle model”, *Nat. Commun.* **8** (2017), article no. 15423.
- [43] P. Kharecha, J. F. Kasting, J. L. Siefert, “A coupled atmosphere-ecosystem model of the early archean Earth”, *Geobiology* **3** (2005), no. 2, p. 53-76.
- [44] A. Affholder, F. Guyot, B. Sauterey, R. Ferrière, S. Mazevet, “Bayesian analysis of Enceladus’s plume data to assess methanogenesis”, *Nat. Astron.* **5** (2021), p. 805-814.
- [45] B. Sauterey, B. Charnay, A. Affholder, S. Mazevet, R. Ferrière, “Early Mars habitability and global cooling by H₂-based methanogens”, *Nat. Astron.* (2022), p. 1263-1271.
- [46] A. Affholder, “Coupling biological, interior and atmosphere models to infer habitability and biosignatures”, PhD Thesis, Sorbonne University, Paris, France, 2022.
- [47] L. Spilker, “Cassini-Huygens’ exploration of the Saturn system: 13 years of discovery”, *Science* **364** (2019), no. 6445, p. 1046-1051.
- [48] P. C. Thomas, R. Tajeddine, M. S. Tiscareno *et al.*, “Enceladus’s measured physical libration requires a global subsurface ocean”, *Icarus* **264** (2016), p. 37-47.
- [49] J. H. Waite, C. R. Glein, R. S. Perryman *et al.*, “Cassini finds molecular hydrogen in the Enceladus plume: Evidence for hydrothermal processes”, *Science* **356** (2017), no. 6334, p. 155-159.
- [50] G. Choblet, G. Tobie, C. Sotin *et al.*, “Powering prolonged hydrothermal activity inside Enceladus”, *Nat. Astron.* **1** (2017), p. 841-847.
- [51] J. C. Goodman, E. Lenferink, “Numerical simulations of marine hydrothermal plumes for Europa and other icy worlds”, *Icarus* **221** (2012), no. 2, p. 970-983.
- [52] R.-S. Taubner, P. Pappenreiter, J. Zwicker *et al.*, “Biological methane production under putative Enceladus-like conditions”, *Nat. Commun.* **9** (2018), article no. 748.
- [53] M. W. Claire, J. Sheets, M. Cohen, I. Ribas, V. S. Meadows, D. C. Catling, “The Evolution of Solar Flux from 0.1 nm to 160 μ m: Quantitative Estimates for Planetary Studies”, *Astrophys. J.* **757** (2012), no. 1, article no. 95.
- [54] R. K. Kopparapu, E. Hébrard, R. Belikov *et al.*, “Exoplanet Classification and Yield Estimates for Direct Imaging Missions”, *Astrophys. J.* **856** (2018), no. 2, article no. 122.
- [55] I. Pascucci, G. D. Mulders, E. Lopez, “The Impact of Stripped Cores on the Frequency of Earth-size Planets in the Habitable Zone”, *Astrophys. J. Lett.* **883** (2019), article no. L15.
- [56] D. Apai, T. D. Milster, D. W. Kim *et al.*, “A Thousand Earths: A Very Large Aperture, Ultralight Space Telescope Array for Atmospheric Biosignature Surveys”, *Astron. J.* **158** (2019), no. 2, article no. 83.