

Physics and heritage / Physique et patrimoine

On the use of archeology in geomagnetism, and vice-versa: Recent developments in archeomagnetism

Yves Gallet^{a,*}, Agnès Genevey^b, Maxime Le Goff^a, Nicolas Warmé^c,
Jean Gran-Aymerich^d, Annie Lefèvre^c

^a *Équipe de Paléomagnétisme, Institut de Physique du Globe de Paris, UMR CNRS 7154, 4, place Jussieu, 75005 Paris, France*

^b *Centre de Recherche et de Restauration des Musées de France, CNRS UMR 171, Palais du Louvre, porte des lions, 14, quai F. Mitterrand, 75001 Paris, France*

^c *Institut de Recherches Archéologiques Préventives, direction Centre-Ile-de-France, 31, rue Delizy, 93698 Pantin cedex, France*

^d *Archéologie d'Orient et d'Occident, UMR CNRS 8546, École Normale Supérieure, 45, rue d'Ulm, 75005 Paris, France*

Available online 14 October 2009

Abstract

Archeomagnetism allows one to track the temporal evolution in direction and intensity of the Earth's magnetic field over the past few millennia, mainly from archeological material baked during their manufacturing or use. Its applications are of interest to both geomagnetism, which investigates the behavior and origin of the geomagnetic field, and archeology, which relies on curves of the magnetic field direction and/or intensity secular variation for dating purposes. Recent archeomagnetic results also suggest a connection between the geomagnetic field and climatic changes during the Holocene. In this article, we also discuss the acquisition of new archeointensity data obtained from potsherds found in the Etruscan site of La Castellina (Italy) and in Vanves (France), respectively dated to the VIIth century BC and to the IXth century AD. *To cite this article: Y. Gallet et al., C. R. Physique 10 (2009).*

© 2009 Académie des sciences. Published by Elsevier Masson SAS. All rights reserved.

Résumé

Sur l'utilisation de l'archéologie en géomagnétisme et vice versa : Développements récents en archéomagnétisme. L'archéomagnétisme est une discipline qui permet de retracer l'évolution temporelle en direction et en intensité du champ magnétique terrestre au travers des derniers millénaires, principalement à partir des matériaux archéologiques ayant subi une cuisson au moment de leur fabrication ou de leur utilisation. Ses applications sont tournées à la fois vers le géomagnétisme, avec une description du comportement et de l'origine du champ géomagnétique, et vers l'archéologie, car des courbes régionales de variation séculaire de la direction et/ou de l'intensité peuvent être utilisées comme outil de datation. Des résultats archéomagnétiques récents suggèrent également une connexion entre le champ géomagnétique et le climat durant l'Holocène. Outre ces aspects, nous présentons l'acquisition de nouvelles valeurs d'archéointensité obtenues à partir de fragments de poteries échantillonnés sur le site Etrusque de La Castellina (Italie) et à Vanves (France), datés respectivement du VII^e siècle av. J.-C. et du IX^e siècle ap. J.-C. *Pour citer cet article : Y. Gallet et al., C. R. Physique 10 (2009).*

© 2009 Académie des sciences. Published by Elsevier Masson SAS. All rights reserved.

Keywords: Geomagnetism; Archeomagnetism; Archeology; Archeointensity; Dating method

* Corresponding author.

E-mail address: gallet@ipgp.jussieu.fr (Y. Gallet).

Mots-clés : Géomagnétisme ; Archéomagnétisme ; Archéologie ; Archéointensité ; Méthode de datation

1. Introduction

The directional and intensity variations of the geomagnetic field measured at the Earth's surface illuminate the magneto-hydrodynamic processes acting in the outer core, principally made of liquid iron at depths between ~ 2900 km and ~ 5150 km, which generate the main geomagnetic field (e.g. Merrill et al. [1]). Irregular in space and time, these variations include both the temporal evolution of the dipole and non-dipole parts of the geomagnetic field, which respectively represent $\sim 90\%$ and $\sim 10\%$ of the total field measured at the Earth's surface. They are relatively well determined for the past four centuries thanks to direct geomagnetic measurements, i.e. directly obtained from instruments, acquired in a few land-based observatories, as well as by ancient mariners aboard ships, and much more recently (since the 1980s) from satellites (e.g. Jackson et al. [2]; Hulot et al. [3]; Jonkers et al. [4]). These measurements have provided a rather complete coverage of the magnetic field components at the Earth's surface, making it possible to track the evolution of the flow pattern at the core's surface (Fig. 1; e.g. Jackson et al. [2]; Hulot et al. [3]). Before ~ 1600 AD, only indirect geomagnetic field measurements obtained from the analysis of the remanent magnetization of rocks and archeological materials offer the possibility to extend our knowledge of geomagnetic secular variation beyond the historical record. In this respect, recent efforts have been accomplished in better constraining the global evolution of the Earth's magnetic field over the past few millennia, using a large compilation of archeomagnetic data (Daly and Le Goff [5]; Hongre et al. [6]; Korte and Constable [7]; Korte et al. [8]).

At the junction of archeology, rock magnetism and geomagnetism, archeomagnetism is a domain of research which relies on the analysis of the magnetic properties of archeological material having undergone a firing at the time of their manufacturing or during their use. Materials that contain iron oxides (principally magnetite) acquire a stable thermoremanent magnetization, whose direction is parallel to the geomagnetic field at the time and place when the iron oxides cooled through the Curie temperature. The magnetization of the material is proportional to the ambient field intensity (for a synthesis see Dunlop and Özdemir [9]). Archeomagnetic studies of in-situ structures such as pottery and domestic kilns of different ages allow one to recover the evolution in direction and intensity of the geomagnetic field for a given region (e.g. Thellier [10]; Lanos et al. [11]; Kovacheva et al. [12]). In contrast, objects displaced from the place where they were originally fired (in unknown position), such as pottery, bricks or tiles, most often give information only on the ancient geomagnetic field intensity (e.g. Thellier and Thellier [13]). In some cases, however, hypotheses can be made on the position of those objects inside the kilns during their firing, which then allows one to determine ancient geomagnetic inclination (e.g. Lanos [14]). Archeomagnetism is therefore continuously benefiting from our increasingly historical and archeological knowledge of the ancient civilizations that have succeeded through the millennia in different parts of the world.

In addition to the acquisition of new archeointensity data from Western Europe dated to the VIIth century BC and to the IXth century AD reported in this study, the main objective of the present article is to show that the applications of archeomagnetism are not restricted to the domain of geomagnetism, but also concern archeology, climate and environmental sciences.

2. Directional geomagnetic variations as a dating tool in France

There has been in France a long tradition of archeomagnetic studies first initiated by Emile Thellier [10,15]. The patient (and on-going) analyses of numerous well-dated, burnt structures (pottery, domestic and lime kilns) have led to the construction of a rather detailed directional secular variation curve spanning the past two millennia (Thellier [10]; Bucur [16]) and one with a lower time resolution for the first millennium BC (Fig. 2; Gallet et al. [17]). This curve exhibits large fluctuations with, for instance, differences reaching $\sim 40^\circ$ in declination between ~ 1100 AD and ~ 1800 AD and $\sim 15^\circ$ in inclination between 800 AD and ~ 1400 AD. It turns out that the nature of these variations provides a dating tool for archeological purposes. Indeed, the comparison between an archeomagnetic direction obtained from a structure of unknown age and the "known" (or reference) directional variation curve makes it possible to date the material in question. The accuracy of the date depends on the reliability and precision of the reference curve, and on the quality of the archeomagnetic direction to be dated. In favorable cases, i.e. when the directional changes are large and rapid such as during the Middle Ages (Fig. 2), the archeomagnetic dating precision at 95% can

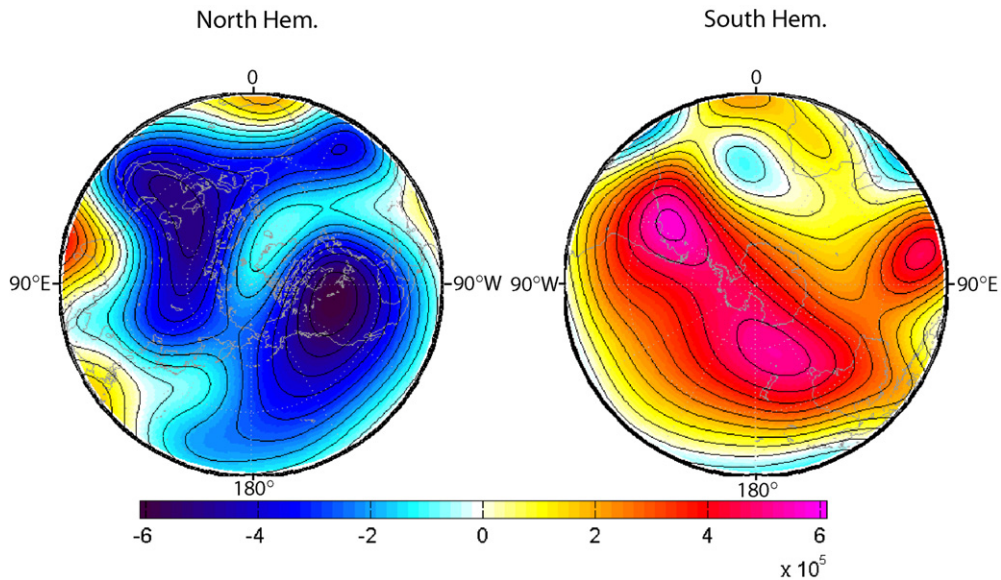


Fig. 1. Polar Maps up to the equator (North and South hemispheres) of the radial component of the Earth's magnetic field at 1600 AD at the core–mantle boundary derived from direct geomagnetic field measurements (Jackson et al. [2]). The color magnitude scale is in nT.

Fig. 1. Cartes polaires jusqu'à l'équateur (hémisphères Nord et Sud) de la composante radiale du champ géomagnétique à la limite noyau–manteau calculée pour 1600 ap. J.-C. à partir des mesures magnétiques directes (Jackson et al. [2]). Le code de couleur pour les intensités est en nT.

be as good as ~ 50 years (e.g. Lanos et al. [11]; Le Goff et al. [18]). This technique is efficient in France when applied for constraining the age of the last use of numerous domestic kilns excavated in many agricultural settlements of the Ile-de-France region dated to the High Middle Ages, a time interval for which chronological data are often imprecise (Warmé [19]). In contrast, the situation is less favorable for the Roman period, which is characterized by a relatively tight loop in geomagnetic directions that prevents a good precision in archeomagnetic dating (although the reference curve is well known for the first centuries AD and even if the archeomagnetic direction to be dated is precisely determined). It is worth pointing out that this archeomagnetic method is also efficient for dating volcanic deposits. It was largely used for this purpose on the volcanoes from Southern Italy, providing invaluable information on the eruptive frequency of those volcanoes over centennial and millennial time scales (e.g. Tanguy et al. [20,21]).

We present below an example of archeomagnetic dating obtained from a lime kiln excavated in a rock shelter called La Fanfarline, close to the small city of Orgon in southeastern France (Fig. 3a). Two uppermost Paleolithic (Alleröd time interval) and one Mesolithic occupation layers were identified at this location. These prehistoric layers were strongly perturbed by a late occupation dated to the High Middle Age (Carolingian period) marked by three pits containing very few datable potsherds (Brochier and Livache [22]). One lime kiln was surprisingly found in the La Fanfarline rock shelter, whose age was unknown. Seventeen large samples were collected using the plaster cap method described in Thellier [10] and precisely oriented towards the magnetic North and the geographic North (using a sun compass for the latter orientation). After preparation in the laboratory, the magnetization of standard 12 cm-side samples was measured using a rotating inductometer specially designed for the large size of the samples. Following Thellier's methodology involving a stringent viscosity test, only the results obtained from the samples having a magnetic viscosity index (defined by the ratio of viscous remanent magnetization to thermoremanent magnetization) of less than 5% were retained for the computation of the mean – ancient – thermoremanent magnetization direction (for more details on the method, see in Thellier [10] or Bucur [16]). Individual directions obtained from 10 samples were further considered (mean viscosity index of 3.1% – note that 2 samples were also rejected because of their weak magnetization). These directions give a mean direction (declination, 8.1° ; inclination, 57.1° at the site; Fig. 3b) precisely defined with a Fisher parameter of 1911 ($\alpha_{95} = 1.0^\circ$). The comparison between this archeomagnetic direction and the reference directional archeomagnetic database available in France was made using the method described in Le Goff et al. [18]. This method aims at testing the compatibility between the direction of the material to be dated and a reference directional variation curve constructed with the help of sliding windows of varying duration, whose

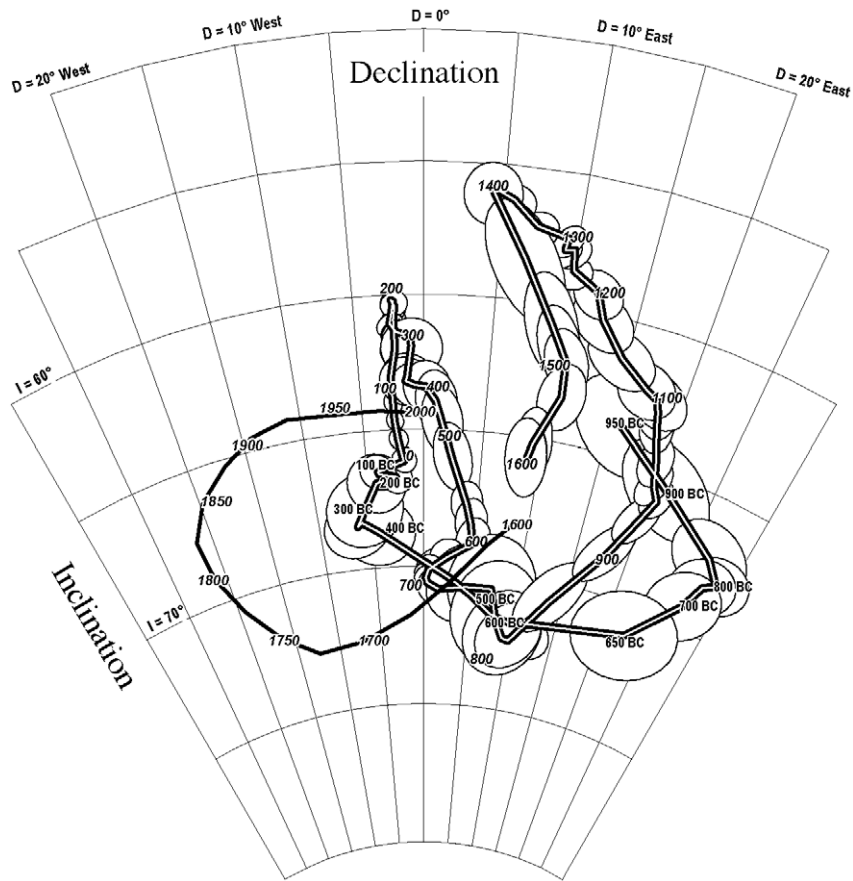


Fig. 2. Directional evolution of the Earth's magnetic field in France (Paris) during the past three millennia. The curve reported with a double line is deduced from French archeomagnetic data averaged over 80 year-long sliding windows shifted every 25 years between 0 AD and 1600 AD (Bucur [16]) and over 160 year-long sliding windows shifted every 50 years between 1000 BC and 50 BC (Gallet et al. [17]). The mean directions are computed with their 95% confidence ovals using the bivariate Fisher statistics (Le Goff [23]). The thick black line indicates the directional geomagnetic variations during the past four centuries derived from direct field measurements (after Thellier [10]).

Fig. 2. Evolution directionnelle du champ géomagnétique en France (Paris) durant les trois derniers millénaires. La courbe représentée par un trait double a été obtenue à partir des données archéomagnétiques françaises moyennées suivant des fenêtres glissantes de 80 ans décalées tous les 25 ans entre 0 AD et 1600 AD (Bucur [16]) et suivant des fenêtres glissantes de 160 ans décalées tous les 50 ans entre 1000 BC et 50 BC (Gallet et al. [17]). Les directions moyennes sont calculées avec leur ovale de confiance à 95 % à partir de l'extension bivariate de la statistique de Fisher (Le Goff [23]). Le trait noir épais indique les variations géomagnétiques directionnelles durant les 4 derniers siècles obtenues à partir des mesures directes (d'après Thellier [10]).

durations are principally fixed following the changing density of available “reference” data over the time, and whose successive mean directions are computed using the bivariate extension of the Fisher distribution (Le Goff [23]; see also Lanos et al. [24] for a different method based on the Bayesian approach for drawing the directional variation curve) (Fig. 3b). An age interval is then determined using a modified version of the McFadden and McElhinny [25] test developed for testing the compatibility at 95% between two Fisherian directions: this amounts to comparing the angular distance (γ) between the direction of unknown age and each of the directions from the reference directional variation curve with a critical angular distance (γ_c) defined at the 95% confidence level (Fig. 3c). This method yields an age for the La Fanfarline kiln between 1380 AD and 1510 AD at the 95% confidence level. Le Goff et al. [18] further proposed to use the compatibility test above as a rejection test in order to estimate the probability p (in %) of making an error if the direction of unknown age was considered different from one dated mean direction. In that case, the parameter p can be used to define a more probable age within the archeomagnetic age interval previously determined. This allows us to find a more probable age around 1470 AD for this kiln (Fig. 3c). Since the time that our archeomagnetic study was carried out in 2003, a radiocarbon age obtained from charcoal found in the La Fanfar-

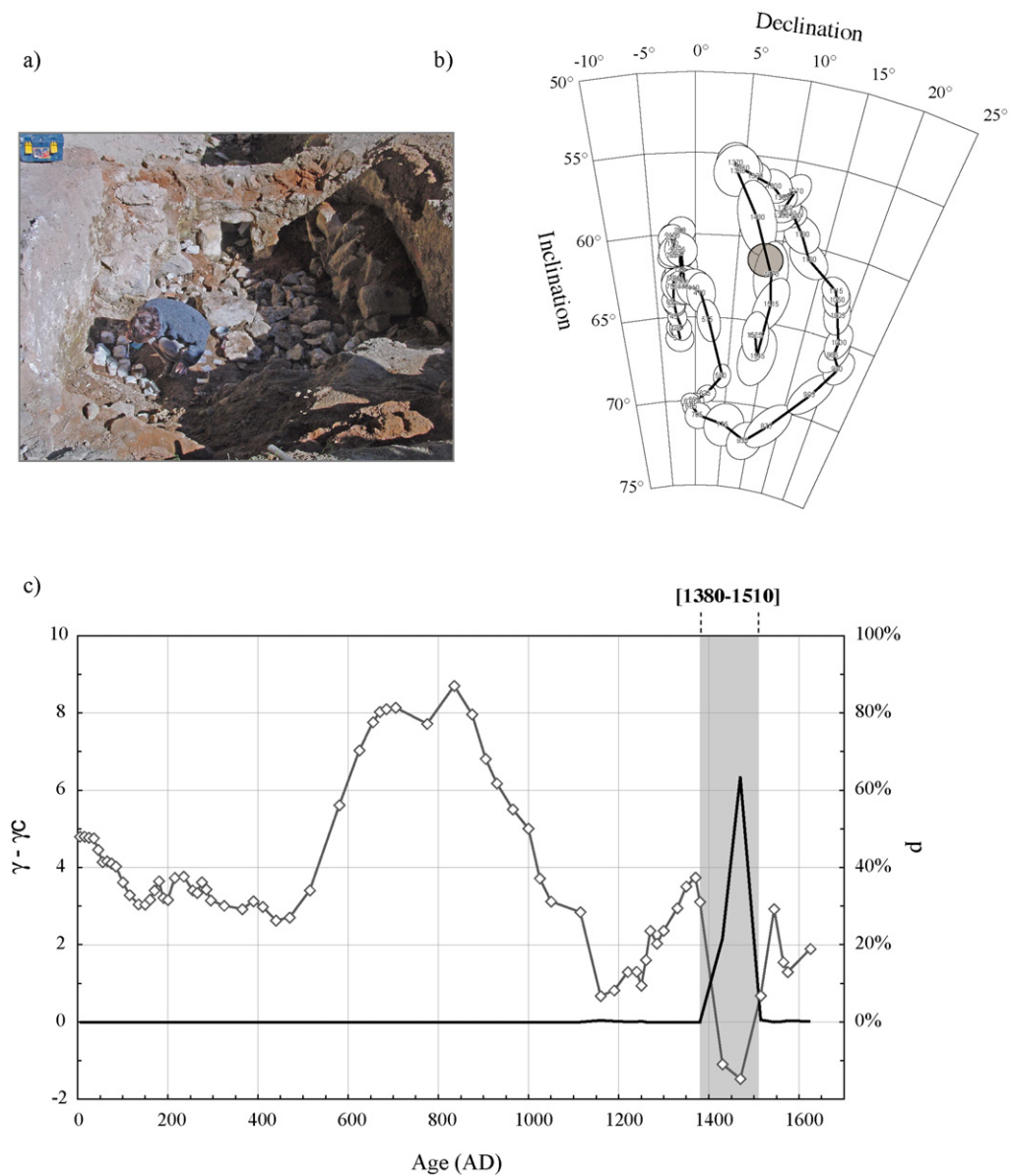


Fig. 3. Archeomagnetic dating of the La Fanfarline lime kiln (Orgon, southeastern France; Brochier and Livache [22]). (a) Picture of the kiln during the archeomagnetic sampling. (b) Comparison between the archeomagnetic direction obtained from the kiln (gray oval) and the reference French directional variation curve over the past two millennia built using sliding time windows of varying duration (Le Goff et al. [18]). (c) Angular distance ($\gamma - \gamma_c$; gray curve with diamonds) and associated “p” parameter (black curve) computed between the direction obtained from the La Fanfarline kiln and each dated mean direction defining the reference French directional variation curve between 0 and 1625 AD (see text for further explanation). The archeomagnetic dating interval at 95% is indicated by the gray band.

Fig. 3. Datation archéomagnétique du four à chaux de La Fanfarline (Orgon, sud-est de la France ; Brochier et Livache [22]). (a) Photo du four durant l'échantillonnage archéomagnétique. (b) Comparaison entre la direction archéomagnétique obtenue sur le four (ovale grisé) et la courbe française de référence des variations directionnelles du champ géomagnétique durant les deux derniers millénaires construite à l'aide de fenêtres glissantes de durée variable (Le Goff et al. [18]). (c) $\gamma - \gamma_c$ (courbe grise avec des losanges) et paramètre “p” associé (courbe noire) calculés entre la direction obtenue sur le four de La Fanfarline et chacune des directions moyennes datées définissant la courbe Française des variations directionnelles entre 0 et 1625 après J.-C. (voir le texte pour plus d'explications). L'intervalle de datation archéomagnétique à 95 % est indiqué par une bande grisée.

line kiln (J.E. Brochier, personal communication) yielded a calibrated age between 1440 AD and 1637 AD (at 2σ), consistent with our result. Combining both the archeomagnetic and radiocarbon age constraints allows one to reduce the time interval to between 1440 AD and 1510 AD, which is again in very good agreement with our most probable archeomagnetic date of around 1470 AD.

3. New methodological progress in determining paleo-field intensities

In order to complement the description of the Earth's magnetic field in Western Europe over the past few millennia, an effort is underway to determine geomagnetic field intensity variations (e.g. Chauvin et al. [26]; Genevey and Gallet [27]; Gallet et al. [28]; Gómez-Paccard et al. [29,30]; Genevey et al. [31]). From an experimental point of view, these determinations are much more complex than those dealing with geomagnetic directions. This is the reason why our knowledge on geomagnetic field intensity variations is still fragmentary and the results sometimes strongly debated (e.g. Gallet et al. [28]; Gómez-Paccard et al. [30]; Genevey et al. [31]).

It is beyond the scope of this article to make a precise description of the various experimental methods used for “archeointensity” determinations (e.g. Tauxe and Yamazaki [32]; Genevey et al. [33]). We briefly recall here the very general principle derived from the works of Néel (e.g. [34]) and Thellier and Thellier [13]. The thermoremanent magnetization (TRM) of a baked clay fragment that can be measured in the laboratory is related to the ancient geomagnetic field intensity at the time and place of its original firing by a proportionality factor which depends on the intrinsic magnetic properties of the studied fragment (nature, quantity and size of the magnetic grains). To recover the ancient field intensity, most protocols derived from the Thellier and Thellier [13] method are based on gradually thermally replacing the old magnetization, the Natural Remanent Magnetization or NRM supposed to be a pure thermoremanent magnetization (TRM), by a new magnetization acquired in the laboratory in known field (intensity and direction) conditions (a laboratory TRM). The ancient magnetic field intensity is then obtained from the ratio between the NRM and the TRM multiplied by the intensity of the field applied while acquiring the laboratory-TRM. This is, however, valid only if the magnetic mineralogy of the analyzed fragment is well adapted to such a technique, i.e. principally if the magnetization is carried by magnetite in the range of single or pseudo-single domain sizes and if no alteration occurs during the thermal treatment. Those conditions are very stringent and many refinements in the intensity protocols have been developed in order to efficiently recognize the presence of multi-domain grains and to detect alteration of the magnetic mineralogy leading to the rejection of the samples (e.g. Leonhardt et al. [35]; Yu et al. [36]). Furthermore, the intensity values derived in this way may be biased by two effects induced one by the anisotropy of TRM due to the stretching of the clay paste during the manufacturing of the artifacts and the other by the cooling rate dependence of TRM acquisition (e.g. Chauvin et al. [26]; Genevey et al. [33]).

To improve the above methodology and also to make easier the archeointensity determinations, Le Goff and Gallet [37] have developed a new vibrating sample magnetometer called the Triaxe. This instrument allows the simultaneous measurements of the three components of the magnetization vector of a small (1 cm-height; 1 cm-diameter) cylindrical sample, which can be heated up to 680 °C and subjected to a magnetic field in any direction and intensity up to ~ 200 μ T. The Triaxe magnetometer is unique in that it allows one to perform magnetization measurements at high temperatures. The potential applications of this magnetometer concern the study of rock magnetism in general, but the key application we have developed so far concerns the establishment of a new fully automated and fast (\sim two hour long) archeointensity routine, which takes into account both TRM anisotropy and cooling rate effects. Numerous comparative tests between results obtained using the Triaxe and several other widely used versions of the classic Thellier and Thellier [13] method (for instance Aitken's or Coe's versions or the so-called IZZI version; Yu et al. [36]) have demonstrated the efficiency of the former procedure (Gallet and Le Goff [38]; Gallet et al. [39,40]; Genevey et al. [31]).

4. New archeointensity results from Western Europe

To better illustrate the Triaxe methodology, we report below the acquisition of two new sets of archeointensity data from Italy and from France.

A collection of ten pottery fragments was sampled from the archeological site of La Castellina del Marangone, ~ 4.5 km south of Civitavecchia and ~ 66 km north-west of Rome (Italy). This site occupies a hill, ~ 130 m in height, near the seashore. Excavations have shown that it was continuously inhabited from the Bronze Age to the

Hellenistic period (XIVth to IIIrd century BC). During the Etruscan period, La Castellina had a remarkable position, midway between the two major cities of Tarquinia and Cerveteri, which greatly favored its commercial importance for regional and sea trading. Our potsherds were collected from a single occupation layer on the oriental terrace area (Gran-Aymerich [41]). They all correspond to a fine pottery characterized by a very distinctive decor with painted fish or bird, well dated to the middle of the VIIth century (layer 7, orientalizing period, ~670–630 BC; Martelli [42]; Gran-Aymerich [43]).

Another group of fragments was sampled in the city of Vanves, located on the southwestern periphery of Paris (France). Six pottery kilns were excavated in 2004 (Gaudray street; work managed by X. Peixoto, Institut de Recherches Archéologiques Préventives). When abandoned, these kilns were used as dumps and filled by thousands of potsherds covering the VIth–IXth century period. The fragments were collected from kiln #1050 which delivered a large and homogeneous collection of potsherds with a fine or semi-fine clay paste and, based on their typology, dated to the first half of the IXth century (Lefèvre [44]).

All collected fragments were subjected to rock magnetic experiments in order to first obtain information on the nature of their magnetic mineralogy and second to investigate the stability of this magnetic mineralogy during heating. Isothermal remanent magnetization (IRM) acquisition measurements indicate that the characteristics of the magnetic mineralogy between the two sites are different. While magnetization reaches saturation in fields of ~0.2–0.3 T for all fragments from La Castellina, saturation is not always reached in fields up to 0.8 T for the samples from Vanves (Fig. 4a). For the latter, when IRM saturation is not reached, hysteresis measurements exhibit “wasp-waisted” shapes (Fig. 4b), which likely reflect the presence of two families of magnetic grains with significantly different magnetic coercivities (e.g. Dunlop and Özdemir [9]). In contrast, for all the samples showing IRM saturation at fields <0.3 T, the shape of the hysteresis loops is not constricted (Fig. 4, c, d) and the hysteresis parameters lie in the pseudo-single domain range of magnetite (Day et al. [45]). These results indicate that the magnetization of our samples is mostly carried by minerals from the magnetite family, but that hematite (i.e. a high-coercivity mineral) is also present in some fragments from Vanves. Such variety in magnetic mineralogy is reminiscent of that previously observed in other western European potsherds (e.g. Chauvin et al. [26]; Genevey and Gallet [27]; Hill et al. [46]). We also systematically measured the temperature variations of the low-field magnetic susceptibility of each fragment between ~20 °C and ~550 °C using a KLY3-CS3 Kappabridge apparatus (Fig. 4, e–h). In all cases, the thermomagnetic curves confirm that the magnetization is dominated by magnetite, perhaps sometimes with different titanium contents or different grain sizes, which would explain a rather “wavy” shape for some curves from La Castellina samples (Fig. 4, e, f). The reversibility of the thermomagnetic curves acquired during heating and cooling is a good marker of lack of alteration of the magnetic mineralogy during heating treatment. For this reason, we selected only the samples displaying a reversible susceptibility behavior for our archeointensity experiments. This led to the rejection of only one sample, which underlines the particularly favorable magnetic behavior of the analyzed fragments.

One sample from each selected fragment was analyzed using the Triaxe magnetometer. The automatic intensity procedure described in detail in Le Goff and Gallet [37] involves 5 successive sequences of continuous measurements (hereafter numbered step #1 to step #5). It first consists of demagnetizing almost completely the NRM by heating in a zero-field the sample from a fixed low temperature T_1 , usually 150 °C, up to a high temperature T_2 , chosen between 445 °C and 525 °C (step #1). The sample is next successively cooled down to T_1 (step #2) and again heated to T_2 (step #3) in order to measure the temperature variations of the spontaneous magnetization of the small magnetization fraction remaining blocked above T_2 . A laboratory TRM is then acquired by cooling the sample from T_2 to T_1 in a field of fixed intensity (Hlab), generally close to the expected ancient intensity, and whose direction is very precisely oriented along the original NRM direction (step #4). Finally, this new TRM is demagnetized up to T_2 (step #5), before the sample is cooled down to room temperature. When the temperature is varying, magnetization measurements are continuously carried out every ~5 °C (running temperature T_i between T_1 and T_2) providing different sequences of measurements numbered $M1(T_1 \leq T_i \leq T_2)$ to $M5(T_1 \leq T_i \leq T_2)$. At each temperature T_i , an intensity determination is obtained from the ratio $R'(T_i)$ of the NRM fraction unblocked between T_1 and T_i ($\Delta'1(T_i)$) to the laboratory TRM fraction also unblocked between T_1 and T_i ($\Delta'5(T_i)$) multiplied by Hlab,

$$\text{with } \Delta'1(T_i) = [M1(T_1) - M1(T_i)] - [M3(T_1) - M3(T_i)] \quad (1)$$

$$\text{and } \Delta'5(T_i) = [M5(T_1) - M5(T_i)] - [M3(T_1) - M3(T_i)] \quad (2)$$

For each sample, a mean archeointensity value is derived by averaging the $R'(T_i)$ data between T_1 and T_2 (see more details and discussion in Le Goff and Gallet [37]).

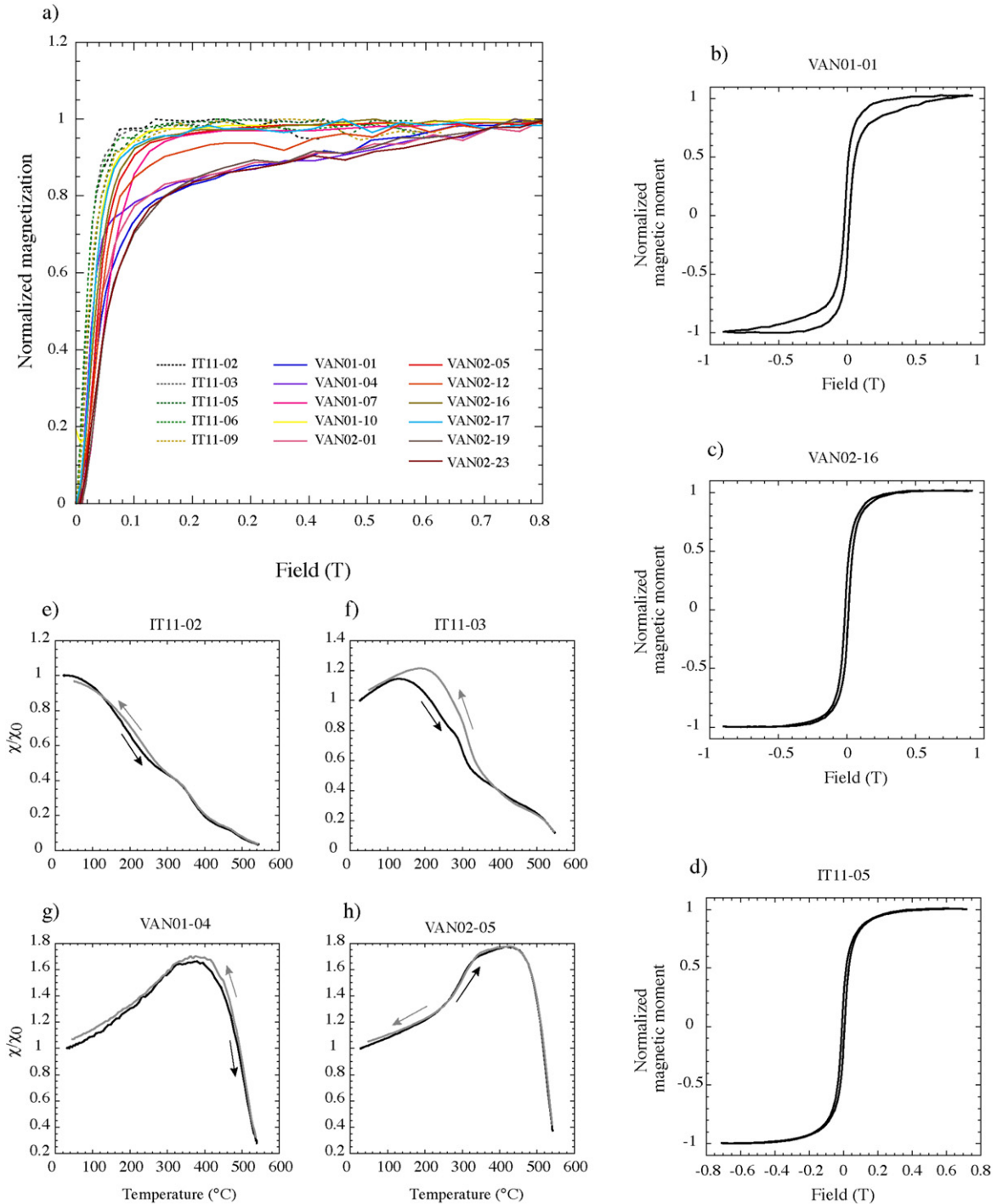


Fig. 4. Magnetic property measurements carried out on pottery fragments collected from La Castellina (Italy; code IT11) and Vanves (France; code VAN01/02) which yielded suitable archeointensity determinations. (a) Normalized IRM acquisition curves obtained for all fragments up to 0.8 T. (b)–(d) Examples of hysteresis loops obtained from two samples from Vanves and one sample from La Castellina. (e)–(h) Examples of normalized bulk susceptibility versus temperature curves.

Fig. 4. Mesures des propriétés magnétiques des fragments de poteries échantillonnés à La Castellina (Italie ; code IT11) et à Vanves (France ; code VAN01/02) ayant donné des résultats d'archéointensité exploitables. (a) Courbes normalisées d'acquisition d'aimantation rémanente isotherme jusqu'à 0.8 T obtenues pour tous les fragments. (b)–(d) Exemples de cycles d'hystérésis obtenus pour deux échantillons de Vanves et un échantillon de La Castellina. (e)–(h) Exemples de courbes de variations de la susceptibilité magnétique en fonction de la température.

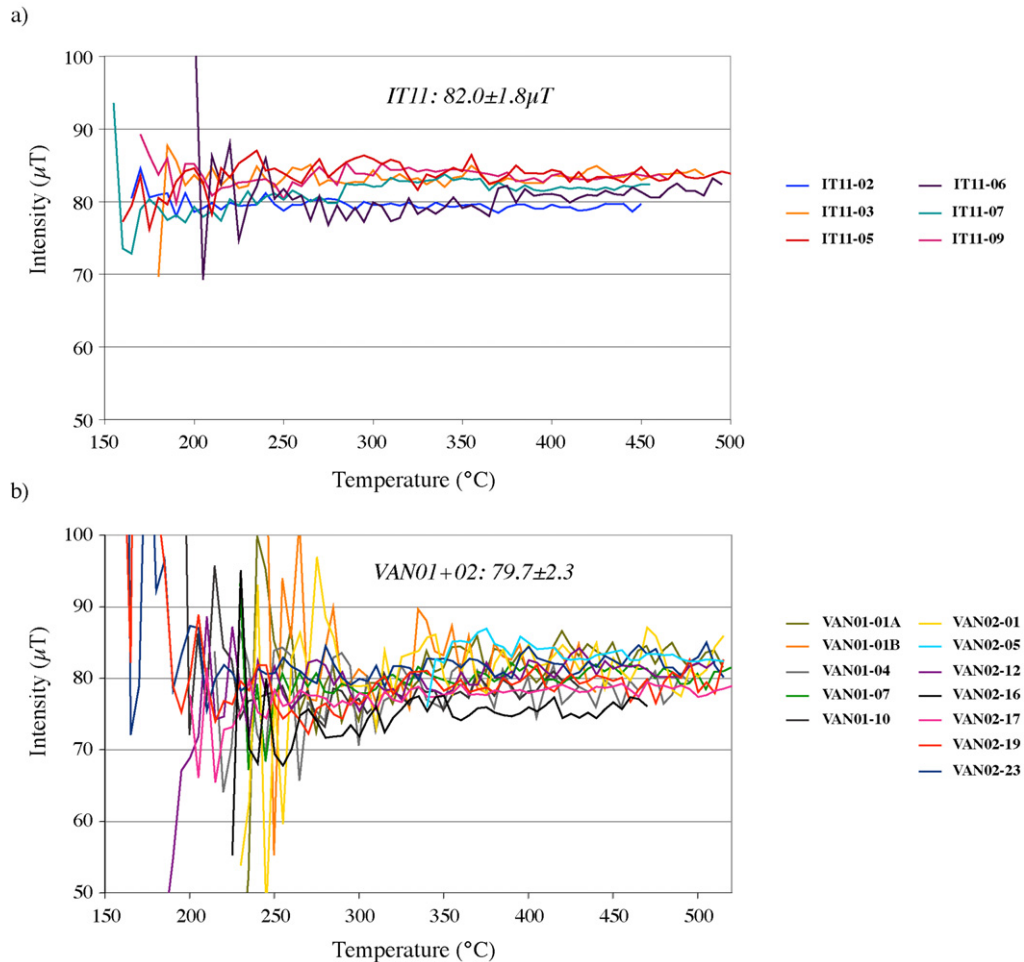


Fig. 5. Archeointensity results from La Castellina (a) and Vanves (b) obtained using the Triaxe magnetometer. Each curve represents the intensity data obtained from one sample over a large temperature interval (see text for further explanation).

Fig. 5. Résultats d'archéointensité obtenus à La Castellina (a) et Vanves (b) en utilisant le magnétomètre Triaxe. Chaque courbe représente les données d'intensité obtenues pour un échantillon sur une large gamme de température (voir le texte pour plus d'explications).

Among the samples analyzed with the Triaxe, 6 from La Castellina and 11 from Vanves fulfilled the same selection (or quality) criteria as those defined by Gallet and Le Goff [38]. These results are reported in Fig. 5 and Table 1. In this figure, each curve thus corresponds to the $R'(Ti)$ data obtained from one sample between 150–250 $^{\circ}\text{C}$ ($T1$) and 445–525 $^{\circ}\text{C}$ ($T2$). Note that some curves from Vanves (Fig. 5b) are significantly scattered, principally in the low-temperature range, because the magnetization fractions considered for the $R'(Ti)$ computations are small. However, this noise does not contribute significantly to the mean $R'(Ti)$ values averaged over the entire $T1$ and $T2$ temperature interval. The $R'(Ti)$ curves in both sites are very consistent, which allows one to compute well-defined site mean intensity values (i.e. by averaging the different mean $R'(Ti)$ data obtained at the sample level), with standard deviations of less than 5% of the corresponding mean. These new values, although of different ages, are close to 80 μT , which is much higher than the intensity value currently prevailing in France and in Italy (~ 47 μT today in Paris and ~ 45 μT in Civitavecchia).

Fig. 6 displays a synthesis of the archeointensity results dated to the past three millennia presently available from Western Europe, which satisfy a set of reasonable selection criteria. For the past eight centuries, however, we report only the well-dated results obtained by Genevey et al. [31] because this data set satisfies several consistency tests and because it reveals a smooth intensity evolution contrasting with the large scatter when all available results are considered (for a discussion see in Genevey et al. [31]). For comparison, we also report data previously obtained from

Table 1

New archeointensity results obtained from La Castellina (IT11) and Vanves (VAN01/02) using the Triaxe method. T_{\min} – T_{\max} , temperature interval (in °C) for intensity determination; Hlab, laboratory field used for TRM acquisition; NRM T_1 (%), fraction of NRM involved from T_1 in intensity determination; Slope R' (%), slope of the $R'(Ti)$ data (see text for further explanation); F Triaxe, intensity value in μT derived from each fragment; F mean, mean intensity value in μT obtained at the site and its standard deviation; F mean in Paris, mean intensity value in μT obtained at the site transferred to the latitude of Paris.

Tableau 1

Nouvelles données d'archéointensité obtenues à La Castellina (IT11) et à Vanves (VAN01/02) en utilisant la méthode du Triaxe. T_{\min} – T_{\max} , intervalle de température (en °C) considéré pour les déterminations d'intensité; Hlab, champ de laboratoire utilisé pour acquérir des aimantations thermorémanentes; NRM T_1 (%), fraction d'aimantation comptée à partir de T_1 considérée pour déterminer une valeur d'intensité; Slope R' (%), pente définie par les données de $R'(Ti)$ (voir le texte pour plus d'explications); F Triaxe, valeur d'intensité obtenue pour chacun des fragments; F mean, valeur moyenne d'intensité (en μT) obtenue au site et sa déviation standard; F mean in Paris, valeur moyenne d'intensité (en μT) transférée à la latitude de Paris.

| Fragment | T_{\min} – T_{\max} (°C) | Hlab (μT) | NRM T_1 (%) | Slope R' (%) | F Triaxe (μT) | F mean \pm SD (μT) | F mean in Paris (μT) |
|--|---------------------------------|---------------------------|------------------|-------------------|---------------------------------|--|--|
| IT11, La Castellina (42.1° N, 11.2° E), [670–630] BC | | | | | | | |
| IT11-02 | 155–450 | 80 | 76 | –1 | 79.5 | 82.0 \pm 1.8 | 88.0 |
| IT11-03 | 180–495 | 75 | 67 | 1 | 83.3 | | |
| IT11-05 | 155–505 | 80 | 78 | 1 | 83.7 | | |
| IT11-06 | 200–495 | 80 | 74 | 2 | 80.4 | | |
| IT11-07 | 155–455 | 80 | 78 | 5 | 81.3 | | |
| IT11-09 | 145–465 | 80 | 81 | 0 | 83.5 | | |
| VAN01/02, Vanves (48.8° N, 2.3° E), [800–850] AD | | | | | | | |
| VAN01-01A | 225–515 | 75 | 89 | 5 | 81.9 | 79.7 \pm 2.3 | 79.8 |
| VAN01-01B | 245–445 | 80 | 56 | –2 | 82.2 | | |
| VAN01-01 | | | | | 82.1 \pm 0.2 | | |
| VAN01-04 | 215–495 | 75 | 77 | 2 | 78.2 | | |
| VAN01-07 | 230–525 | 75 | 93 | 3 | 80.1 | | |
| VAN01-10 | 195–430 | 80 | 82 | –1 | 78.4 | | |
| VAN02-01 | 230–515 | 70 | 89 | 2 | 81.8 | | |
| VAN02-05 | 370–515 | 75 | 94 | –2 | 82.4 | | |
| VAN02-12 | 160–515 | 75 | 81 | 5 | 80.0 | | |
| VAN02-16 | 225–470 | 75 | 91 | 5 | 74.8 | | |
| VAN02-17 | 200–525 | 75 | 77 | 4 | 77.7 | | |
| VAN02-19 | 160–515 | 75 | 94 | –2 | 79.3 | | |
| VAN02-23 | 160–515 | 75 | 92 | –1 | 82.0 | | |

the Middle East (Syria and Iran; Genevey et al. [53]; Gallet et al. [39]). Fig. 6 clearly shows that the geomagnetic field intensity variations in Western Europe were large and rapid during the past 3000 years. The second half of the first millennium BC was marked by a significant intensity decrease of $\sim 30\%$ in three to four centuries. The new result from La Castellina helps to better define a strong intensity maximum during the beginning of the first millennium BC, with a value of $\sim 90 \mu\text{T}$ at the latitude of Paris around the VIIth–VIIIth century BC. Several data from the Middle East confirm this evolution and allow one to draw more precisely the intensity decrease between ~ 600 BC and ~ 200 BC. The end of the first millennium AD was also characterized by a distinctive intensity peak centered around the VIIIth–IXth century AD. In particular, the result from Vanves provides further evidence for this peak. It is in very good agreement with another archeointensity value of the same age previously obtained from Saran (~ 90 km south of Paris) by Genevey and Gallet [27]. After the IXth century AD, there was a decreasing trend in intensity, perhaps with a rate as high as $\sim 7 \mu\text{T}$ per century until the XIIth century AD. Furthermore, Gallet et al. [28] and Genevey et al. [31] have shown that the evolution of geomagnetic field intensity during the past millennium was not regular, with the occurrence of at least two intensity peaks during the XIVth century AD and around 1600 AD.

5. Archeomagnetism and “Archeoclimate”: a missing link?

From their archeomagnetic investigation conducted in France and in the Middle East, Gallet et al. [39,54] proposed the existence of a new type of geomagnetic event, which they called “archeomagnetic jerks”. Occurring over multi-decadal time scales, these events are characterized by sharp and rapid directional variations (“cusps”) synchronous

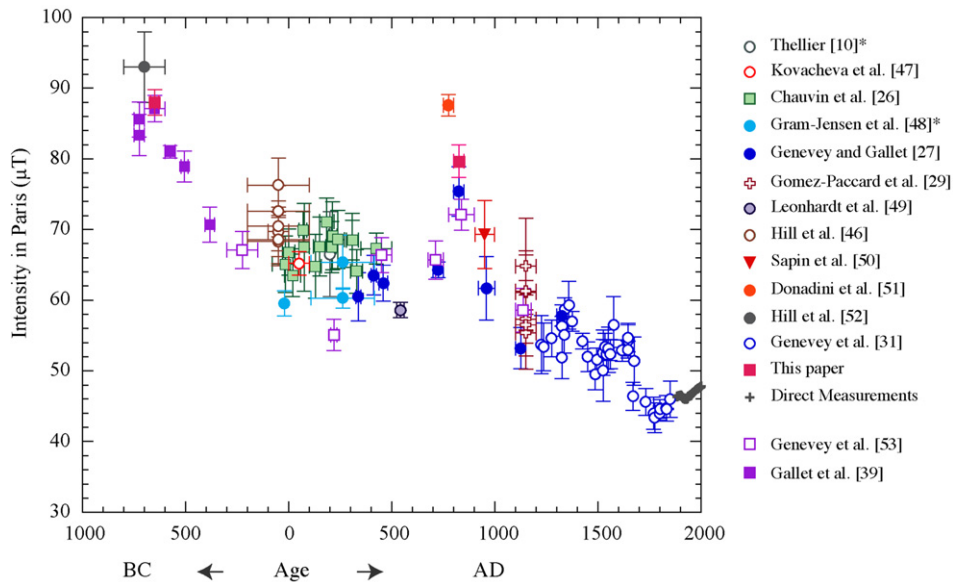


Fig. 6. Geomagnetic field intensity variations in Western Europe for the past three millennia as deduced from a compilation of archeointensity results which satisfy a set of reasonable selection criteria. Symbols, color codes and associated references are indicated to the right of the diagram. The data quoted with a * were corrected from a 5% cooling rate effect. Several data obtained from the Middle East are also reported (open and filled purple squares). All data were transferred to the latitude of Paris ($\lambda = 48.9^\circ$ N).

Fig. 6. Variations de l'intensité du champ géomagnétique en Europe de l'Ouest au travers des trois derniers millénaires déduites d'une compilation de données d'archéointensité satisfaisant à un ensemble raisonnable de critères de sélection. Les symboles, les codes de couleur et les références associées sont indiqués sur la droite du diagramme. Les données marquées par un * ont été corrigées d'un effet de vitesse de refroidissement de 5%. Quelques résultats obtenus au Moyen-Orient sont également reportés (carrés pleins et vides de couleur violet). Toutes les données ont été transférées à la latitude de Paris ($\lambda = 48.9^\circ$ N).

with intensity maxima. Over the past three millennia, such archeomagnetic jerks were detected at ~ 800 BC, ~ 200 AD, ~ 750 – 800 AD and ~ 1400 AD (Gallet et al. [54]). Snowball and Sandgren [55] and Gallet et al. [39] further reported the possible occurrence of three older archeomagnetic jerks at ~ 2700 BC, ~ 2200 BC and ~ 1600 BC. The origin of archeomagnetic jerks is currently under debate (e.g. Stoner et al. [56]; Dumberry and Finlay [57]; Knudsen et al. [58]; Valet et al. [59]; Gallet et al. [60]). Using global archeomagnetic field models, Dumberry and Finlay [57] have proposed to link archeomagnetic jerks with some dynamics at the core surface at mid to high latitudes of the northern hemisphere. Using the same approach, Gallet et al. [60] recently went one step further, showing that archeomagnetic jerks most probably correspond to periods of maximum geomagnetic field hemispheric asymmetry. During these periods, the geometry of the geomagnetic field appears best described by an eccentric dipole significantly displaced from the Earth's center. Gallet et al. [60] further proposed to link these most eccentric events with the production and gathering of magnetic flux patches at the core–mantle boundary within preferential longitudes. Though first detected in French archeomagnetic records, the best-documented archeomagnetic jerks discussed by Gallet et al. [54] would therefore possess a global signature.

The latter point is of special interest, as Gallet et al. [28,39] have observed intriguing and repeated coincidences between archeomagnetic jerks and the occurrence of cooling events in western Europe over the past few millennia (Fig. 7, [61–63]). This was, for instance, the case during the VIIIth century AD (Holzhauser [61]; Holzhauser et al. [62]), and during the XIVth century AD with the occurrence of the first cooling episode of the Little Ice Age (e.g. Le Roy Ladurie [64]). The repeated nature of these coincidences led us to propose some connection between the secular variation of the geomagnetic field and climatic changes over multi-decadal time scales. The physical mechanism that could link the two phenomena still remains uncertain, but Gallet et al. [28] and Courtillot et al. [65] suggested that the geomagnetic field variations of internal origin may modulate the cosmic ray flux interacting with the atmosphere. Based on the works of several authors focused on cosmic ray induced ionization of the atmosphere (e.g. Svensmark and Friss-Christensen [66]; Marsh and Svensmark [67]; Kovaltsov and Usoskin [68]; Kirkby [69]; Usoskin et al. [70]), it seems possible that such interaction produced significant changes in cloudiness, therefore modifying the radiation

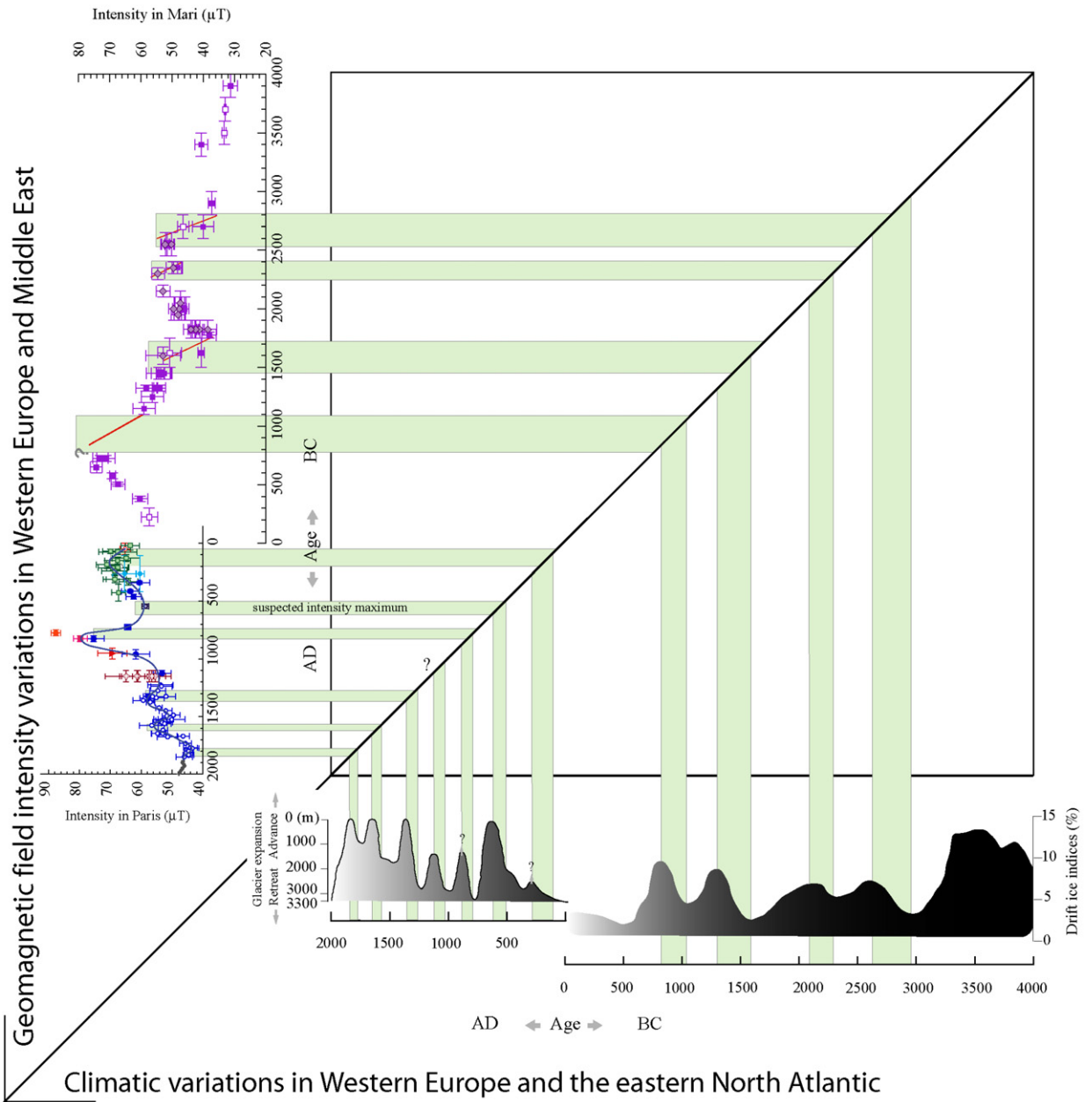


Fig. 7. Geomagnetic field intensity variations obtained from Western Europe (same data and symbols as in Fig. 6 for the past two millennia) and the Middle East (for the last 4 millennia BC) against climatic fluctuations in the eastern North Atlantic–Western European region. The data from the Middle East are from Genevey et al. [53] (open squares), Gallet et al. [39] (filled squares) and Gallet et al. [40] (filled diamonds). An overall good coincidence is observed between periods of field intensity increase (horizontal bands) and cooling events (vertical bands) marked by glacier advances on land (Holzhauser [61]; Holzhauser et al. [62]) and increases in ice-rafted debris in deep-sea sediments (after Bond et al. [63]). See in Gallet et al. [39] for discussion.

Fig. 7. Comparaison entre les variations de l'intensité du champ géomagnétique obtenues en Europe de l'Ouest (mêmes données et symboles que ceux de la Fig. 6 pour les deux derniers millénaires) ainsi qu'au Moyen-Orient (pour les 4 derniers millénaires av. J.-C.) et les fluctuations climatiques dans la zone Est de l'Atlantique Nord et en Europe de l'Ouest. Les données du Moyen-Orient sont celles de Genevey et al. [53] (carrés ouverts), Gallet et al. [39] (carrés pleins) et Gallet et al. [40] (losanges pleins). Une bonne coïncidence est observée entre les périodes d'augmentation de l'intensité du champ géomagnétique (bandes horizontales) et des épisodes de refroidissement (bandes verticales) marqués à terre par des avancées de glaciers (Holzhauser [61]; Holzhauser et al. [62]) et des augmentations de la proportion de débris glaciaires dans les sédiments océaniques (d'après Bond et al. [63]). Pour une discussion, voir Gallet et al. [39].

budget of the Earth and the temperatures at the Earth's surface (e.g. Gallet et al. [28]; Kovaltsov and Usoskin [68]; Courtillot et al. [65]; Usoskin et al. [70]; Knudsen and Riisager [71]). Although controversial (e.g. Bard and Delaygue [72]; Courtillot et al. [73]), this scenario appears all the more plausible given that the archeomagnetic jerks indeed correspond to remarkable features in the global geometry of the Earth's magnetic field (Gallet et al. [60]).

Results from the CLOUD (for “Cosmics Leaving Outdoor Droplets”) experiment, in which the conditions of interaction between the atmosphere and incoming high-energy particles will be simulated in a cloud chamber (e.g. Kirkby [69]), should provide more physical and chemical constraints on the possible connection between cosmic rays and the production rate of clouds. The point here is not to stand against the widely held view linking solar activity to climate variability over the past millennia (e.g. Bard and Frank [74]), but to defend the idea that the geomagnetic field of internal origin may have an influence on atmospheric processes and climate that has been largely ignored until now. Moreover, Snowball and Muscheler [75] recently emphasized the fact that, prior to 1600 AD, our still limited knowledge of dipole field moment evolution over centennial time scales is the “Achilles heel” of solar activity reconstructions derived from the geomagnetic-dependent past production rates of cosmogenic isotopes (^{14}C , ^{10}Be) in the Earth's atmosphere (see also St-Onge et al. [76]). In any case, the possible connection between Earth (i.e. its geomagnetic field), Sun and Space (cosmic ray flux) calls for the continuation of archeomagnetic studies in order to refine the description of geomagnetic field behavior over the past few millennia.

6. Discussion

6.1. Archeointensity: a promising dating tool

Until very recently, directional variations of the Earth's magnetic field were the only available way to constrain with magnetic data the age of in-situ burnt structures, and sometimes of displaced materials for which hypotheses could be made regarding their position inside the kilns during firing (e.g. bricks and tiles; Lanos [14]). However, the rapid development of archeointensity measurements in Europe over the past few years has allowed the use of geomagnetic field intensity fluctuations as a dating tool. This should, in particular, offer the possibility to date all displaced baked materials commonly found in excavations, such as pottery, tile and brick fragments. For a given region, the efficiency of the method depends on the amplitude and rapidity of geomagnetic field intensity variations, and of course on our ability to make precise intensity determinations. Although the latter point is still debated, the consistency observed between archeointensity results dated to the same age is very satisfactory (see data and discussion in Genevey et al. [31]).

The new data presented in this article, together with the previous results reported in Fig. 6 clearly indicate that geomagnetic field intensity variations have been both large and rapid in Western Europe over at least the past three millennia, which is therefore favorable for obtaining precise age determination in this region. Such is in particular the case for the second half of the first millennium BC and the IXth–XIIth time interval, characterized in both cases by a significant intensity decrease. For those periods, archeointensity-based dating with a precision of a century or even less is a reasonable objective. The recent work of Genevey et al. [31], focused on the past eight centuries, has further revealed the occurrence of two peaks in intensity during the XIVth century and around 1600 AD. Such an evolution would, for instance, make it possible to clearly distinguish fragments dated to the XVIth or XVIIth century from other fragments dated to the XVIIIth or XIXth century: a direct application would be, for example, the possible identification of fake ceramics. This curve also shows significantly different intensity values between the beginning and the end of both the XIVth and the XVIth centuries, which, in both cases, may provide good chronological constraints.

There are several recent examples of archeomagnetic dating derived from geomagnetic field intensity variations (e.g. Kovacheva et al. [77]; Jordanova et al. [78]; Ben-Yosef et al. [79]). In particular, Ben-Yosef et al. [79] took advantage of archeointensity data spanning the last few millennia BC now available from the Middle East to constrain the age of several poorly dated archeometallurgical sites. This approach, which relies on archeointensity determinations obtained from copper slag deposits, is promising, although the proposed ages may be debatable because of the still limited time resolution of the “reference” archeointensity curve from the Middle East. At this stage, it is of interest to discuss further the comparison between reliable archeointensity data obtained from Western Europe and from the Middle East. When concordant in age, the data appear very similar after reduction to the same geographic latitude using the approximation of a “simple” geocentric axial dipole. This indicates that, over the past few millen-

nia, geomagnetic field intensity variations in Western Eurasia were strongly dominated by the dipole field component (or at least very low degree spherical harmonics), therefore offering the possibility to construct a composite reliable intensity variation curve that would integrate data obtained from different places over a large spatial area and concerning different civilizations, such as France, Italy, Greece, Bulgaria, Egypt or Mesopotamia (Genevey et al. [33]). We may, for instance, use Neolithic intensity data obtained from the Middle East to constrain the age of poorly dated potsherds found in Western Europe. Another consequence is also clear: the accuracy and the time resolution of the reference Western Eurasian intensity variation curve may be notably improved by selecting only the best dated groups of fragments available from the “richest” periods of the different concerned civilizations. Such careful selection of well-dated and reliable intensity results is however far from trivial (e.g. Genevey et al. [33]), but would doubtlessly increase the potential of (and the interest in) the archeointensity dating technique all over the Mediterranean area. Note that there is no other place in the world (neither South of North America, nor Africa nor even China), where our knowledge of past regional geomagnetic field intensity fluctuations is presently good enough to currently use these variations for accurate dating. However, the recent efforts to acquire new archeointensity data from Mesoamerica and South America (e.g. Stark et al. [80]; Rodriguez Ceja et al. [81]) should rapidly lead to the construction of new regional reference geomagnetic field intensity variation curves.

6.2. Archeomagnetism and ancient human societies

The influence of climate on the fate of ancient civilizations has been hotly debated for many years (see for instance deMenocal [82]; Fagan [83]; Issar and Zohar [84]; Diamond [85]). For many historians and archeologists, the risk when correlating Holocene climate variability to human history, is to propose an over simplistic scenario in which anthropogenic actions on the evolution of civilizations are ignored. Moreover, obtaining evidence for a “collapse of civilization”, a “cultural downturn” or even for a “civilization crisis” from highly fragmentary archeological records is not a trivial matter. Hence, Gallet and Genevey [86] wrote with caution: “*This potential influence, which serves as the foundation of ‘climate determinism’, can be viewed as the response of natural-resource-dependent, agricultural-based communities to climatically driven environmental changes. In some cases, these could have provoked major damage in economic and social organization of the societies, thus paving the way for political disintegration*”. And in fact, there are several examples in the literature in which major societal events were directly linked to climatic (drought) events: for instance in the Middle East, with the end of the Uruk civilization and the beginning of the Old Egyptian empire (end of the 4th millennium BC-beginning of the 3rd millennium BC; e.g. Brooks [87]) or the disappearance of the Akkadian empire and of the Old Egyptian empire around 2200 BC (e.g. Weiss et al. [88]; Cullen et al. [89]), and in Mesoamerica where the Classic Maya civilization was probably struck by different climate-related crises during the first millennium AD (e.g. Hodell et al. [90]; Haug et al. [91]). It is reasonable to believe that the social organization of some societies was particularly vulnerable to climate-induced environmental changes, in particular those living in semi-arid regions (Middle East) and in seasonal desert (Mesoamerica) where the water supply was most probably a critical factor in social and political stability. However, it is worth noting that the concept of “climate determinism”, as first promoted by Huntington [92] (see in Issar and Zohar [84]), appears rather inappropriate, or at least too simplistic, because the reasons leading to the demise of well-organized societies were likely a complex combination of natural and human inter-related processes, though climate may have played the role of a catalyst.

Gallet et al. [39] and Gallet and Genevey [86] noted that some of the climatic variations (i.e. toward drier conditions) that may have caused social disruptions in the Middle East and in Mesoamerica (e.g. deMenocal [82]; Weiss et al. [88]; Hodell et al. [90]) were synchronous with archeomagnetic jerks detected in Western Eurasia. If significant, that connection may indicate that the secular variation of the Earth’s magnetic field has had an indirect impact, through its influence on regional or global climate, on the history of human civilization.

6.3. Other techniques and applications of archeomagnetism

Archeomagnetism is not limited to the dating of baked archeological materials. For instance, attempts have been made to recover a geomagnetic signal from pre-Columbian lime-plaster samples collected from the archeological site of Teotihuacan (Mesoamerica; Soler-Arechalde et al. [93]) and from sun-dried adobe bricks sampled in Peru and Egypt (Games [94,95]). For the latter objects, laboratory experiments showed that a consistent but rather weak magnetic remanence was acquired in the ambient field, when the clay was mixed with water and shaped in a wooden mold

(inducing a “shear remanent magnetization”; Games, [94]), rather than during the drying itself (see also Genevey [96]). In order to obtain intensity values, Games [94,95] proposed to use a non-thermal method, involving the replacement of the ancient NRM measured on a brick sample by a new magnetization acquired after re-fabrication of the sample in known field conditions. The first results obtained by this author from Egyptian ancient adobe bricks were relatively promising, although scattered, but the effort was not pursued. One of the main reasons for this probably arose from the difficulty in routinely reproducing in the laboratory the original manufacturing process (with a significant change in scale between a whole brick and a small sample). Moreover, the physical process leading to the acquisition of the stable magnetization in adobe bricks remains poorly understood, and much less so than for baked materials.

Other attempts were also made to derive ancient geomagnetic field directions from mural paintings (Chiari and Lanza [97,98]; Zanella et al. [99]; Goguitchaichvili et al. [100]). According to Chiari and Lanza [97,98] and Zanella et al. [99], the physical process of the magnetization acquisition in red colored painting is related to grains of hematite free to orient parallel to the Earth’s magnetic field when the paint applied to a wall is liquid; the magnetization becomes locked when the paint dries, thus forming a consistent “pictorial” remanent magnetization. Tests carried out in Italy, in particular in Pompei where the red color was often used for the backgrounds of wall paintings (Zanella et al. [99]), and in Mesoamerica have shown that it was possible to recover a rather consistent geomagnetic field direction from mural paintings. The precision of these determinations (α_{95} comprised between $\sim 5^\circ$ and $\sim 10^\circ$) is not sufficient to derive strong dating constraints for the studied paintings or to integrate the data into a reference archeomagnetic directional database. But further investigation, for instance on the influence of roughness and porosity of the painted surfaces on the magnetic record, should strengthen this particularly interesting and promising approach dealing with sometimes very well dated materials.

Finally, although not directly relevant to the purpose of this article, we should mention the possible use of thermoremanent magnetization for analyzing the firing position or the thermal history of archeological materials. This has potential applications for deciphering pottery, brick or tile production practices or for constraining their in-situ or displaced origin (e.g. Lanos et al. [11]; Hill et al. [52]). There is also the important and fruitful application of soil magnetism to archeological prospecting (e.g. see in Evans and Heller [101]). Moreover, magnetic methods are increasingly used to characterize the nature and origin of non-heated archeological materials. This again concerns the properties of ancient iron-bearing paints found not only on walls but also on pottery (e.g. Stewart et al. [102]). Similar analyses were also performed to trace the provenance of archeological ochres from Australia (Mooney et al. [103]). In these examples, relatively simple magnetic measurements were indeed effective in discriminating between different materials and clearly appeared as a useful complement to more sophisticated geochemical analyses.

7. Conclusion

This article aims at illustrating recent developments in archeomagnetism. Significant progress has been made on the regional and global description of the Earth’s magnetic field for the past few millennia. For instance, archeomagnetic investigations in Western Europe and in the Middle East have led to the detection of a new type of geomagnetic events, the so-called archeomagnetic jerks, that may correspond to century-scale (global) episodes of maximum geomagnetic field hemispheric asymmetry. These events appear coincident with climatic cooling events, at least in Western Europe, which might reflect an influence of the Earth’s magnetic field on cosmic ray flux ionizing the atmosphere. This connection is currently hotly debated, and calls for further investigation and thorough collaboration between researchers involved in Earth sciences and archeology. On the other hand, our increasing knowledge of geomagnetic field variations, in particular in Western Eurasia, makes archeomagnetism a powerful dating tool for archeological purposes. Until recently, only directional geomagnetic variations have been used to constrain the age of burnt structures. Methodological progress in the determination of ancient geomagnetic field intensities and subsequent acquisition of new archeointensity data now make it possible to use geomagnetic field intensity fluctuations in order to obtain chronological markers. This development should allow one to use the archeomagnetic dating technique on potentially all in-situ and displaced baked materials. A few archeomagnetic studies have also shown that non-baked archeological objects, such as sun-dried bricks or paintings, may possess a stable, albeit weak remanent magnetization providing useful information on the ancient geomagnetic field. These emerging results should foster renewed mutual interest between archeo-geomagnetism and archeology.

Acknowledgements

We thank Ruven Pillay, Vincent Courtillot and Stuart Gilder for careful reading of the manuscript. We are grateful to Jacques-Elie Brochier who gave us the possibility of working on the La Fanfarline kiln. We also thank two anonymous reviewers for their useful comments. This work was partly financed by the CNRS-PICS project no. 3063. IGP contribution no. 2517.

References

- [1] R. Merrill, M. McElhinny, P. McFadden, *The Magnetic Field of the Earth, Paleomagnetism, the Core and the Deep Mantle*, Academic Press, San Diego, USA, 1996, p. 531.
- [2] A. Jackson, A. Jonkers, M. Walker, Four centuries of geomagnetic secular variation from historical records, *Philos. Trans. R. Astron. Soc. London A* 358 (2000) 957–990.
- [3] G. Hulot, C. Eymin, B. Langlais, M. Manda, N. Olsen, Small scale structure of the geodynamo inferred from Oersted and Magsat satellite data, *Nature* 416 (2002) 620–623.
- [4] A. Jonkers, A. Jackson, A. Murray, Four centuries of geomagnetic data from historical records, *Rev. Geophys.* 41 (2003) 1006, doi:10.1029/2002RG000115.
- [5] L. Daly, M. Le Goff, An updated and homogeneous world secular variation data base. 1. Smoothing of the archeomagnetic results, *Phys. Earth Planet. Inter.* 93 (1996) 159–190.
- [6] L. Hongre, G. Hulot, A. Khokhlov, An analysis of the geomagnetic field over the past 2000 years, *Phys. Earth Planet. Inter.* 106 (1998) 311–335.
- [7] M. Korte, C. Constable, Continuous geomagnetic field models for the past 7 millennia II: CALS7K, *Geochem. Geophys. Geosyst.* 6 (2005) Q02H16, doi:10.1029/2004GC000801.
- [8] M. Korte, A. Genevey, C. Constable, U. Frank, E. Schnepp, Continuous geomagnetic field models for the past 7 millennia I: A new global data compilation, *Geochem. Geophys. Geosyst.* 6 (2005) Q02H15, doi:10.1029/2004GC000800.
- [9] D. Dunlop, Ö. Özdemir, *Rock Magnetism, Fundamental and Frontiers*, University Press, Cambridge, 1997, p. 573.
- [10] E. Thellier, Sur la direction du champ magnétique terrestre en France durant les deux derniers millénaires, *Phys. Earth Planet. Inter.* 24 (1981) 89–132.
- [11] P. Lanos, M. Kovacheva, A. Chauvin, Archeomagnetism, methodology and application: Implementation and practice of the archeomagnetic method in France and Bulgaria, *Eur. J. Archaeology* 2 (1999) 365–392.
- [12] M. Kovacheva, Y. Boyadziev, M. Kostadinova-Avramova, N. Jordanova, F. Donadini, Updated archeomagnetic data set of the past 8 millennia from the Sofia laboratory, Bulgaria, *Geophys. Geosyst.* 10 (2009) Q05002, doi:10.1029/2008GC002347.
- [13] E. Thellier, O. Thellier, Sur l'intensité du champ magnétique terrestre dans le passé historique et géologique, *Ann. Géophys.* 15 (1959) 285–376.
- [14] P. Lanos, *Archéomagnétisme des matériaux déplacés, applications à la datation des matériaux de construction d'argile cuite en archéologie*, PhD thesis, 1987, p. 317.
- [15] E. Thellier, Sur l'aimantation des terres cuites et ses applications géophysiques, *Ann. Inst. Phys. Globe Univ. Paris* 16 (1938) 157–302.
- [16] I. Bucur, The direction of the terrestrial magnetic field in France during the last 21 centuries, *Phys. Earth Planet. Inter.* 87 (1994) 95–109.
- [17] Y. Gallet, A. Genevey, M. Le Goff, Three millennia of directional variation of the Earth's magnetic field in Western Europe as revealed by archeological artefacts, *Phys. Earth Planet. Inter.* 131 (2002) 81–89.
- [18] M. Le Goff, Y. Gallet, A. Genevey, N. Warmé, On archeomagnetic secular variation curves and archeomagnetic dating, *Phys. Earth Planet. Inter.* 134 (2002) 203–211.
- [19] N. Warmé, L'archéomagnétisme des fours domestiques du haut Moyen Age, in : F. Gentili, A. Lefèvre, N. Mahé (Eds.), *L'habitat rural du haut Moyen Age en Ile-de-France*, 1st sup. Bulletin Archéologique du Vexin Français, 2003, pp. 32–35.
- [20] J.-C. Tanguy, M. Le Goff, C. Principe, S. Arrighi, V. Chillemi, A. Paiotti, S. Delfa, G. Patane, Archeomagnetic dating of Mediterranean volcanics from the last 2100 years: Validity and limits, *Earth Planet. Sci. Lett.* 211 (2003) 111–124.
- [21] J.-C. Tanguy, M. Condomines, M. Le Goff, V. Chillemi, S. La Delfa, G. Patanè, Mount Etna eruptions of the last 2750 years: Revised chronology and location through archeomagnetic and ^{226}Ra – ^{230}Th dating, *Bull. Volcano.* 70 (2007) 55–83.
- [22] J.E. Brochier, M. Livache, *Orgon : Abri de la Fanfarline, Bilan scientifiques, Région Provence-Alpes-Côte d'Azur*, 2004, p. 148.
- [23] M. Le Goff, Lissage et limites d'incertitude des courbes de migration polaire : Pondération des données et extension bivariable de la statistique de Fisher, *C. R. Acad. Sci. Sér. II* (311) (1990) 1191–1198.
- [24] P. Lanos, M. Le Goff, M. Kovacheva, E. Schnepp, Hierarchical modelling of archeomagnetic data and curve estimation by moving average technique, *Geophys. J. Int.* 160 (2005) 440–476.
- [25] P. McFadden, M. McElhinny, Classification of the reversal test in paleomagnetism, *Geophys. J. Int.* 103 (1990) 725–729.
- [26] A. Chauvin, Y. Garcia, P. Lanos, F. Laubenheimer, Palaeointensity of the geomagnetic field recovered on archeomagnetic sites from France, *Phys. Earth Planet. Inter.* 120 (2000) 111–136.
- [27] A. Genevey, Y. Gallet, Intensity of the geomagnetic field in western Europe over the past 2000 years: New data from ancient French pottery, *J. Geophys. Res.* 107 (2002) EPM1-1–18.
- [28] Y. Gallet, A. Genevey, F. Fluteau, Does Earth's magnetic field secular variation control centennial climate change? *Earth Planet. Sci. Lett.* 236 (2005) 339–347.

- [29] M. Gómez-Paccard, A. Chauvin, P. Lanos, J. Thiriot, P. Jiménez-Castillo, Archeomagnetic study of seven contemporaneous kilns from Murcia (Spain), *Phys. Earth Planet. Inter.* 157 (2006) 16–32.
- [30] M. Gómez-Paccard, A. Chauvin, P. Lanos, J. Thiriot, New archeointensity data from Spain and the geomagnetic dipole moment in Western Europe over the past 2000 years, *J. Geophys. Res.* 113 (2008) B09103, doi:10.1029/2008JB005582.
- [31] A. Genevey, Y. Gallet, J. Rosen, M. Le Goff, Evidence for rapid geomagnetic field intensity variations in Western Europe over the past 800 years from new archeointensity French data, *Earth Planet. Sci. Lett.* 284 (2009) 132–143.
- [32] L. Tauxe, T. Yamazaki, Paleointensities, in: M. Kono (Ed.), *Geomagnetism*, vol. 5, Elsevier, 2007, pp. 509–563.
- [33] A. Genevey, Y. Gallet, C. Constable, M. Korte, G. Hulot, ArcheoInt: An upgraded compilation of geomagnetic field intensity data for the past ten millennia and its application to the recovery of the past dipole moment, *Geochem. Geophys. Geosyst.* 9 (4) (2008) Q04038, doi:10.1029/2007GC001881.
- [34] L. Néel, Some theoretical aspects of rock magnetism, *Adv. Phys.* 4 (1955) 191–243.
- [35] R. Leonhardt, C. Heunemann, D. Krasa, Analyzing absolute paleointensity determinations: Acceptance criteria and the software Thellier-Tool4.0, *Geochem. Geophys. Geosyst.* 5 (2004), doi:10.1029/2004GC000807.
- [36] Y. Yu, L. Tauxe, A. Genevey, Toward an optimal geomagnetic field intensity determination technique, *Geochem. Geophys. Geosyst.* 5 (2004) Q02H07, doi:10.1029/2003GC000630.
- [37] M. Le Goff, Y. Gallet, A new three-axis vibrating sample magnetometer for continuous high-temperature magnetization measurements: Applications to paleo- and archeointensity determinations, *Earth Planet. Sci. Lett.* 229 (2004) 31–43.
- [38] Y. Gallet, M. Le Goff, High-temperature archeointensity measurements from Mesopotamia, *Earth Planet. Sci. Lett.* 241 (2006) 159–173.
- [39] Y. Gallet, A. Genevey, M. Le Goff, F. Fluteau, S.A. Eshraghi, Possible impact of the Earth's magnetic field on the history of ancient civilizations, *Earth Planet. Sci. Lett.* 246 (2006) 17–26.
- [40] Y. Gallet, M. Le Goff, A. Genevey, J. Margueron, P. Matthiae, Geomagnetic field intensity behavior in the Middle East between 3000 BC and 1500 BC, *Geophys. Res. Lett.* 35 (2008) L02307, doi:10.1029/2007GL031991.
- [41] J. Gran-Aymerich, Les confins maritimes entre Tarquinia et Caere, in: M. Bonghi Jovino (Ed.), *Civitavecchia et les recherches à La Castellina del Marangone, Tarquinia e le civiltà del Mediterraneo*, Convegno internazionale Università degli Studi di Milano, Milan, 2006, pp. 247–273.
- [42] M. Martelli, La ceramica degli Etruschi, La pittura vascolare, *Novara* 28 (3–4) (2000) 83–85.
- [43] J. Gran-Aymerich, The CNRS-Paris excavations at La Castellina, *Etruscan News (New York)* 2 (2003) 4.
- [44] A. Lefèvre, Vanves (Hauts-de-Seine, France) : La découverte d'un important centre potier du Haut Moyen Age, in: 4th International Congress of Medieval and Modern Archeology, 3–8 Sept., 2007, Paris.
- [45] R. Day, M. Fuller, V. Schmidt, Hysteresis properties of titanomagnetites: Grain size and composition dependence, *Phys. Earth Planet. Inter.* 13 (1977) 260–267.
- [46] M. Hill, P. Lanos, A. Chauvin, D. Vitali, F. Laubheimer, An archeomagnetic investigation of a Roman amphorae workshop in Albinia (Italy), *Geophys. J. Int.* 169 (2007) 471–482.
- [47] M. Kovacheva, J.M. Parès, N. Jordanova, V. Karloukovski, A new contribution to the archeomagnetic study of a Roman pottery kiln from Calahorra (Spain), *Geophys. J. Int.* 123 (1995) 931–936.
- [48] M. Gram-Jensen, N. Abrahamsen, A. Chauvin, Archeomagnetic intensity in Denmark, *Phys. Chem. Earth* 25 (2000) 525–531.
- [49] R. Leonhardt, J. Matzka, A.R.L. Nichols, D.B. Dingwell, Cooling rate correction of paleointensity determination for volcanic glasses by relaxation geospeedometry, *Earth Planet. Sci. Lett.* 243 (2006) 282–292.
- [50] C. Sapin, M. Baylé, S. Büttner, P. Guibert, S. Blain, P. Lanos, A. Chauvin, P. Dufresne, C. Oberlin, Archéologie du bâti et archéométrie au Mont-Saint-Michel, nouvelles approches de Notre-Dame-sous-Terre, *Archéologie médiévale* 38 (2008) 71–122.
- [51] F. Donadini, M. Kovacheva, M. Kostadinova, L. Casas, L.J. Pesonen, New archeointensity results from Scandinavia and Bulgaria, Rock-magnetic studies inference and geophysical application, *Phys. Earth Planet. Inter.* 165 (2007) 229–247.
- [52] M. Hill, P. Lanos, M. Denti, P. Dufresne, Archeomagnetic investigation of bricks from the VIIIth–VIIth century BC Greek-indigenous site of Incoronata (Metaponto, Italy), *Phys. Chem. Earth* 33 (2008) 523–533.
- [53] A. Genevey, Y. Gallet, J. Margueron, Eight thousand years of geomagnetic field intensity variations in the eastern Mediterranean, *J. Geophys. Res.* 108 (2003) 2228, doi:10.1029/2001JB001612.
- [54] Y. Gallet, A. Genevey, V. Courtillot, On the possible occurrence of archeomagnetic jerks in the geomagnetic field over the past three millennia, *Earth Planet. Sci. Lett.* 214 (2003) 237–242.
- [55] I. Snowball, R. Sandgren, Geomagnetic field intensity changes in Sweden between 9000 and 450 cal BP: Extending the record of “archeomagnetic jerks” by means of lake sediments and the pseudo-Thellier technique, *Earth Planet. Sci. Lett.* 227 (2004) 361–375.
- [56] J. Stoner, P. Francus, R. Bradley, W. Patridge, M. Abbott, M. Retelle, S. Lamoureux, J. Channell, Abrupt shifts in the position of the North magnetic pole from Arctic lake sediments: Relationship to archeomagnetic jerks, in: *Eos Trans. AGU Fall Meeting* 86 (52), 2005, pap. GP44A-02.
- [57] M. Dumberry, C. Finlay, Eastward and westward drift of the Earth's magnetic field for the last three millennia, *Earth Planet. Sci. Lett.* 254 (2007) 146–157.
- [58] M.F. Knudsen, P. Riisager, F. Donadini, I. Snowball, R. Muscheler, K. Korhonen, L. Pesonen, Variations in the geomagnetic dipole moment during the Holocene and the past 50 kyr, *Earth Planet. Sci. Lett.* 272 (2008) 319–329.
- [59] J.-P. Valet, E. Herrero-Bervera, J.-L. Le Mouél, G. Plenier, Secular variation of the geomagnetic dipole during the past 2000 years, *Geochem. Geophys. Geosyst.* 9 (1) (2008) Q01008, doi:10.1029/2007GC001728.
- [60] Y. Gallet, G. Hulot, A. Chulliat, A. Genevey, Geomagnetic field hemispheric asymmetry and archeomagnetic jerks, *Earth Planet. Sci. Lett.* 284 (2009) 179–186.
- [61] H. Holzhauser, Fluctuations of the Grosse Aletsch Glacier and the Groner Glacier during the last 3200 years, in: B. Frenzel, G. Boulton, B. Glaser, U. Huckriede (Eds.), *Glacier Fluctuations during the Holocene*, Akademie der Wissenschaften und der Literatur, 1997, pp. 35–58.

- [62] H. Holzhauser, M. Magny, H. Zümbühl, Glacier and lake-level variations in west central Europe over the last 3500 years, *Holocene* 15 (2005) 789–801.
- [63] G. Bond, B. Kromer, J. Beer, R. Muscheler, M. Evans, W. Showers, S. Hoffmann, R. Lotti-Bond, I. Hajdas, G. Bonani, Persistent solar influence on North Atlantic climate during the Holocene, *Science* 294 (2001) 2130–2136.
- [64] E. Le Roy Ladurie, *Histoire humaine et comparée du climat. Canicules et glaciers XIIIe–XVIIIe siècles*, Fayard ed., 2004, 740 pp.
- [65] V. Courtillot, Y. Gallet, J.-L. Le Mouél, F. Fluteau, A. Genevey, Are there connections between the Earth's magnetic field and climate? *Earth Planet. Sci. Lett.* 253 (2007) 328–339.
- [66] H. Svensmark, E. Friss-Christensen, Variation of cosmic ray flux and global cloud coverage – A missing link in solar–climate relationship, *J. Atmos. Sol. – Terr. Phys.* 59 (1997) 1225–1232.
- [67] N. Marsh, H. Svensmark, Low cloud properties influenced by cosmic rays, *Phys. Rev. Lett.* 85 (2000) 5004–5007.
- [68] G. Kovaltsov, I. Usoskin, Regional cosmic ray induced ionization and geomagnetic field changes, *Adv. Geosci.* 13 (2007) 31–35.
- [69] J. Kirkby, Cosmic rays and climate, *Surv. Geophys.* 28 (2007) 333–375, doi:10.1007/s10712-008-9030-6.
- [70] I. Usoskin, M. Korte, G. Kovaltsov, Role of centennial geomagnetic changes in local atmospheric ionization, *Geophys. Res. Lett.* 35 (2008) L05811, doi:10.1029/2007GL033040.
- [71] M.F. Knudsen, P. Riisager, Is there a link between Earth's magnetic field and low-latitude precipitation, *Geology* 37 (2009) 1, doi:10.1130/G25238A.1.
- [72] E. Bard, G. Delaygue, Comment on “Are there connections between the Earth's magnetic field and climate?”, *Earth Planet. Sci. Lett.* 265 (2008) 302–307.
- [73] V. Courtillot, Y. Gallet, J.-L. Le Mouél, F. Fluteau, A. Genevey, Response to comment on “Are there connections between the Earth's magnetic field and climate?”, *Earth Planet. Sci. Lett.* 265 (2008) 308–311.
- [74] E. Bard, M. Frank, Climate change and solar variability: What's new under the sun? *Earth Planet. Sci. Lett.* 248 (2006) 1–14.
- [75] I. Snowball, R. Muscheler, Paleomagnetic intensity data: An Achilles heel of solar activity reconstructions, *Holocene* 17 (2007) 851–859.
- [76] G. St-Onge, J. Stoner, C. Hillaire-Marcel, Holocene paleomagnetic records from the St. Lawrence Estuary, eastern Canada: Centennial- to millennial-scale geomagnetic modulation of cosmogenic isotopes, *Earth Planet. Sci. Lett.* 209 (2003) 113–130.
- [77] M. Kovacheva, I. Hedley, N. Jordanova, M. Kostadinova, V. Gigov, Archeomagnetic dating of archaeological sites from Switzerland and Bulgaria, *J. Archeological Sci.* 31 (2004) 1463–1479.
- [78] N. Jordanova, M. Kovacheva, M. Kostadinova, Archeomagnetic investigation and dating of Neolithic archaeological site (Kovachevo) from Bulgaria, *Phys. Earth Planet. Inter.* 147 (2004) 89–102.
- [79] E. Ben-Yosef, L. Tauxe, H. Ron, A. Agon, U. Avner, M. Najjar, T. Levy, A new approach for geomagnetic archeointensity research: Insights on ancient metallurgy in the Southern Levant, *J. Archeological Sci.* 35 (2008) 2863–2879.
- [80] F. Stark, R. Leonhardt, J. Fassbinder, M. Reindel, The field of sherds: Reconstructing geomagnetic field variations from Peruvian potsherds, in: M. Reindel, G. Wagner (Eds.), *New Technologies for Archeology, Natural Science in Archeology*, Springer-Verlag, Berlin, Heidelberg, 2009.
- [81] M. Rodriguez Ceja, A. Goguitchaichvili, J. Morales, M. Ostrooumov, L. Manzanilla, B. Aguilar Reyes, J. Urrutia-Fucugauchi, Integrated archeomagnetic and micro-Raman spectroscopy study of pre-Columbian ceramics from the Mesoamerican formative village of Cuanalan, Teotihuacan, Mexico, *J. Geophys. Res.* 114 (2009) B04103, doi:10.1029/2008JB006106.
- [82] P. deMenocal, Cultural response to climate change during the late Holocene, *Science* 292 (2001) 667–673.
- [83] B. Fagan, *The Long Summer: How Climate Changed Civilization*, Basic Books Pub., 2004, p. 284.
- [84] A. Issar, M. Zohar, *Climate Change – Environment and Civilization in the Middle East*, Springer-Verlag, Berlin, Heidelberg, 2004, p. 252.
- [85] J. Diamond, *Collapse, How Societies Choose to Fail or Succeed*, Viking Press Pub., 2005, p. 592.
- [86] Y. Gallet, A. Genevey, The Mayans: Climate determinism or geomagnetic determinism? *EOS Trans. Amer. Geophys. Union* 88 (11) (2007) 129–130.
- [87] N. Brooks, Cultural responses to aridity in the Middle Holocene and increased social complexity, *Quatern. Int.* 151 (2006) 29–49.
- [88] H. Weiss, M.-A. Courty, W. Wetterstrom, F. Guichard, L. Senior, R. Meadow, A. Curmow, The genesis and collapse of third millennium North Mesopotamian civilization, *Science* 261 (1993) 995–1004.
- [89] H. Cullen, P. deMenocal, S. Hemming, G. Hemming, F. Brown, T. Guilderson, F. Sirocko, Climate change and the collapse of the Akkadian empire: Evidence from the deep sea, *Geology* 28 (2000) 379–382.
- [90] D. Hodell, J. Curtis, M. Brenner, Possible role of climate in the collapse of Classic Maya civilization, *Nature* 375 (1995) 391–394.
- [91] G. Haug, D. Günther, L. Petersen, D. Sigman, K. Hughen, B. Aeschlimann, Climate and the collapse of Maya civilization, *Science* 299 (2003) 1731–1735.
- [92] E. Huntington, *Palestine and its Transformation*, Houghton Mifflin Company, New York, 1911.
- [93] A. Soler-Arechalde, F. Sanchez, M. Rodriguez, C. Caballero-Miranda, A. Goguitchaishvili, J. Urrutia-Fucugauchi, D. Tarling, Archeomagnetic investigation of oriented pre-Columbian lime-plasters from Teotihuacan, Mesoamerica, *Earth Planets Space* 58 (2006) 1433–1439.
- [94] K. Games, The magnitude of the paleomagnetic field: A new non-thermal, non-detrital method using sun-dried bricks, *Geophys. J. Roy. Astron. Soc.* 48 (1977) 315–329.
- [95] K. Games, The magnitude of the archeomagnetic field in Egypt between 3000 and 0 BC, *Geophys. J. Roy. Astron. Soc.* 63 (1980) 45–56.
- [96] A. Genevey, *Apport de l'archéomagnétisme à la connaissance du champ magnétique terrestre durant les derniers millénaires*, PhD thesis IPGP, 2002, p. 217.
- [97] G. Chiari, R. Lanza, Pictorial remanent magnetization as an indicator of secular variation of the Earth's magnetic field, *Phys. Earth Planet. Inter.* 101 (1997) 79–83.
- [98] G. Chiari, R. Lanza, Remanent magnetization of mural paintings from the Bibliotheca Apostolica (Vatican, Rome), *J. Appl. Geophys.* 41 (1999) 137–143.

- [99] E. Zanella, L. Gurioli, G. Chiari, A. Ciarallo, R. Cioni, E. De Carolis, R. Lanza, Archeomagnetic results from mural paintings and pyroclastic rocks in Pompeii and Herculaneum, *Phys. Earth Planet. Inter.* 118 (2000) 227–240.
- [100] A. Goguitchaivili, A. Soler, E. Zanella, G. Chiari, R. Lanza, J. Urrutia-Fucugauchi, T. Gonzalez, Pre-Columbian mural paintings from Mesoamerica as geomagnetic field recorders, *Geophys. Res. Lett.* 31 (2004) L12607, doi:10.1029/2004GL020065.
- [101] M. Evans, F. Heller, *Environmental Magnetism, Principles and Applications of Enviromagnetics*, Academic Press, San Diego, 2003, p. 299.
- [102] J. Stewart, K. Adams, G. Borradaile, A. MacKenzie, Investigations of paints on ancestral Puebloan black-on-white pottery using magnetic and microanalytic methods, *J. Archeological Sci.* 29 (2002) 1309–1316.
- [103] S. Mooney, C. Geiss, M. Smith, The use of mineral magnetic parameters to characterize archeological ochres, *J. Archeological Sci.* 30 (2003) 511–523.