

St. Cloud State University

The Repository at St. Cloud State

Anthropology Faculty Presentations and
Posters

Department of Anthropology

Summer 2019

From Lower Town to St. Cloud State: Geophysical Survey of an Evolving Urban Landscape 1869-2019

Rob Mann

Jonathan Corbin

Michael Penrod

Veronica Parsell

Follow this and additional works at: https://repository.stcloudstate.edu/anth_facpres



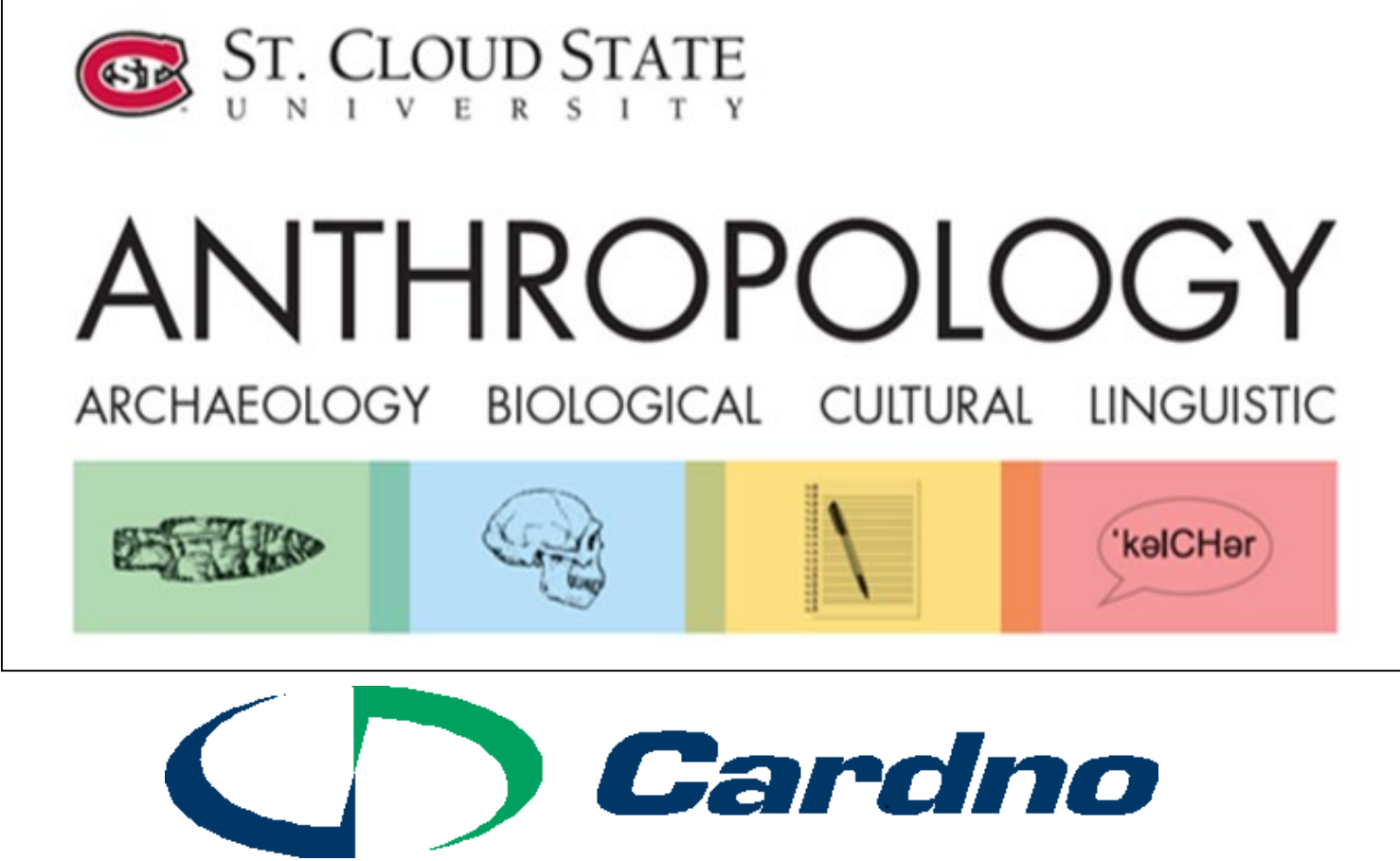
Part of the [Archaeological Anthropology Commons](#)



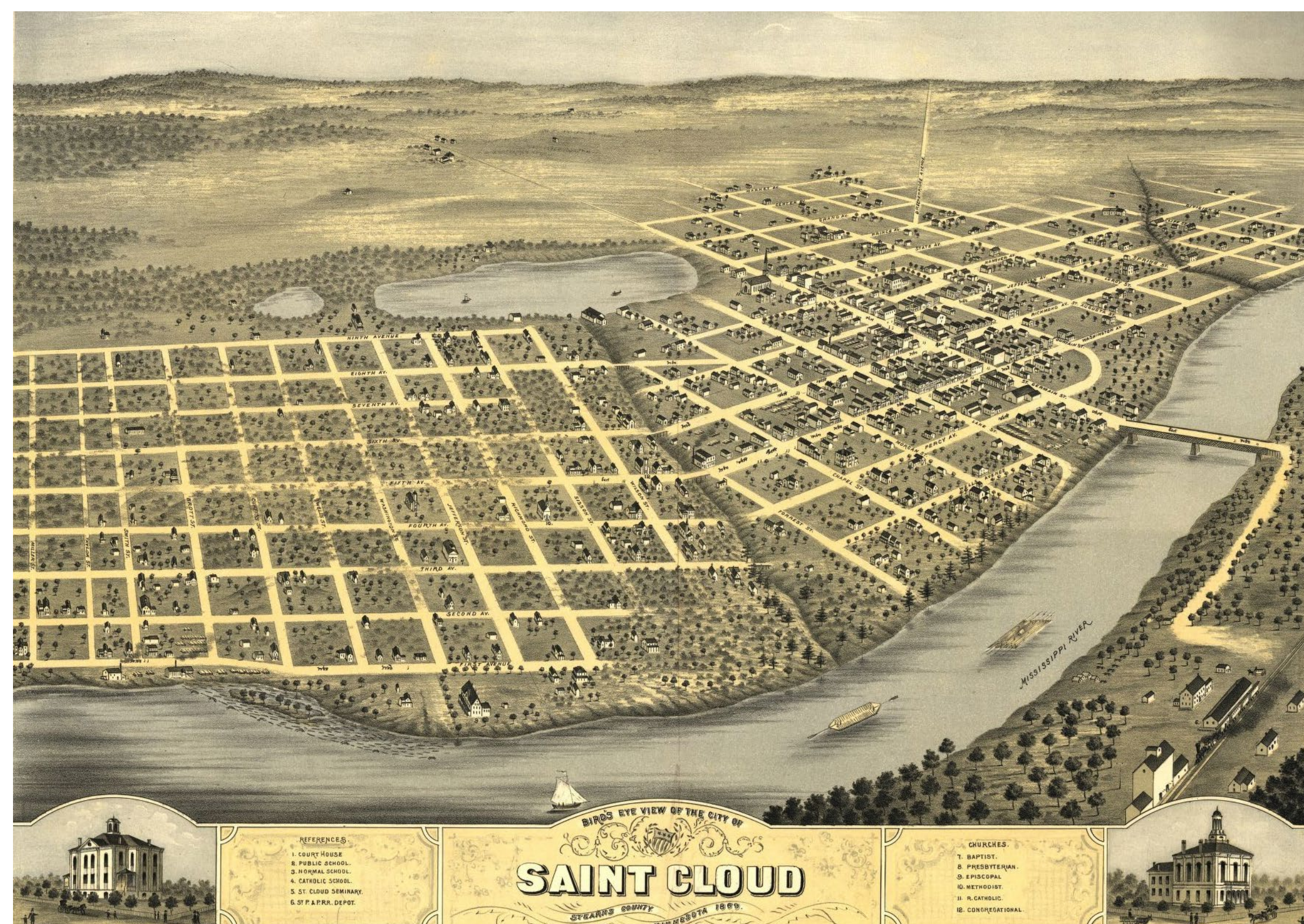
COLLEGE OF
LIBERAL ARTS
ST. CLOUD STATE UNIVERSITY

From Lower Town to St. Cloud State: Geophysical Survey of an Evolving Urban Landscape 1869-2019

Mike Penrod¹, Jonathan Corbin¹, Veronica Parsell², and Rob Mann¹
¹St. Cloud State University-Department of Anthropology ²Cardno, Inc.



Historical Overview: From Lower Town to St. Cloud State

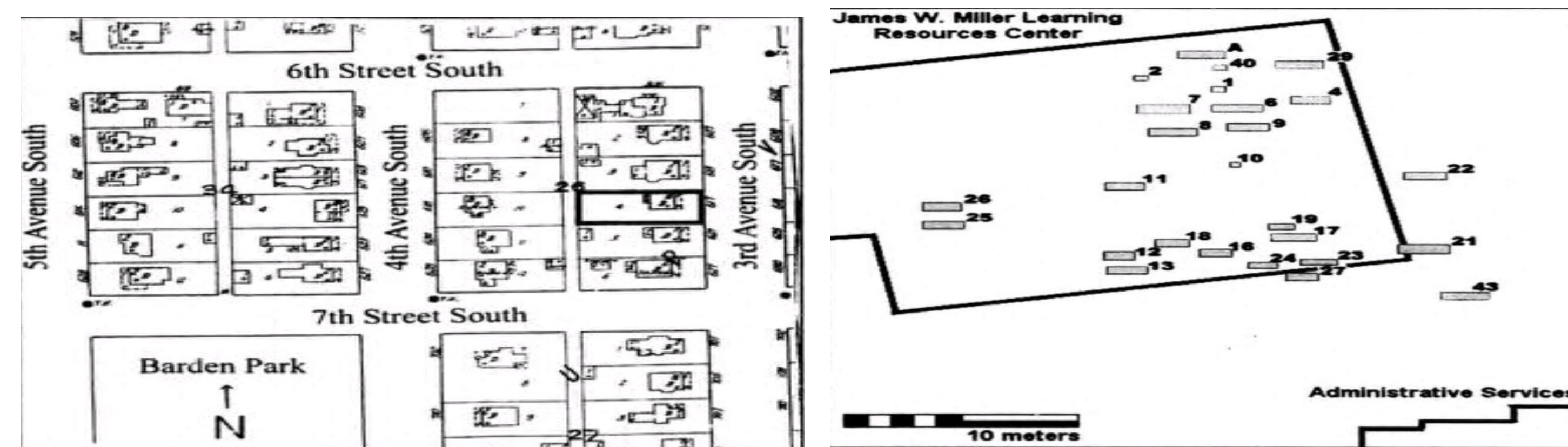


Lower Town founded	Cemetery closed
Cemetery started	
Stearns House Built	
1866-68	1869
Deed issues lead to the general abandonment of lower town	Saint Cloud Normal School opens
1875	1888
"Old" Main completed	Deed issues resolved
	Lower Town gradually reoccupied and developed
1895(?)	1900s
Stearns House torn down	Initial construction on cemetery site
1945 through 1960s	
Saint Cloud State grows and expands into area between Mississippi River and 5 th avenue and 5 th St. to 9 th St.	
1950	
"Old" Main torn down	
Early 1970s	
Cemetery site cleared for parking lot	
1999	
Cemetery site cleared again for construction of University library; construction almost immediately hits evidence of cemetery	
2019 Saint Cloud University Celebrates Sesquicentennial	

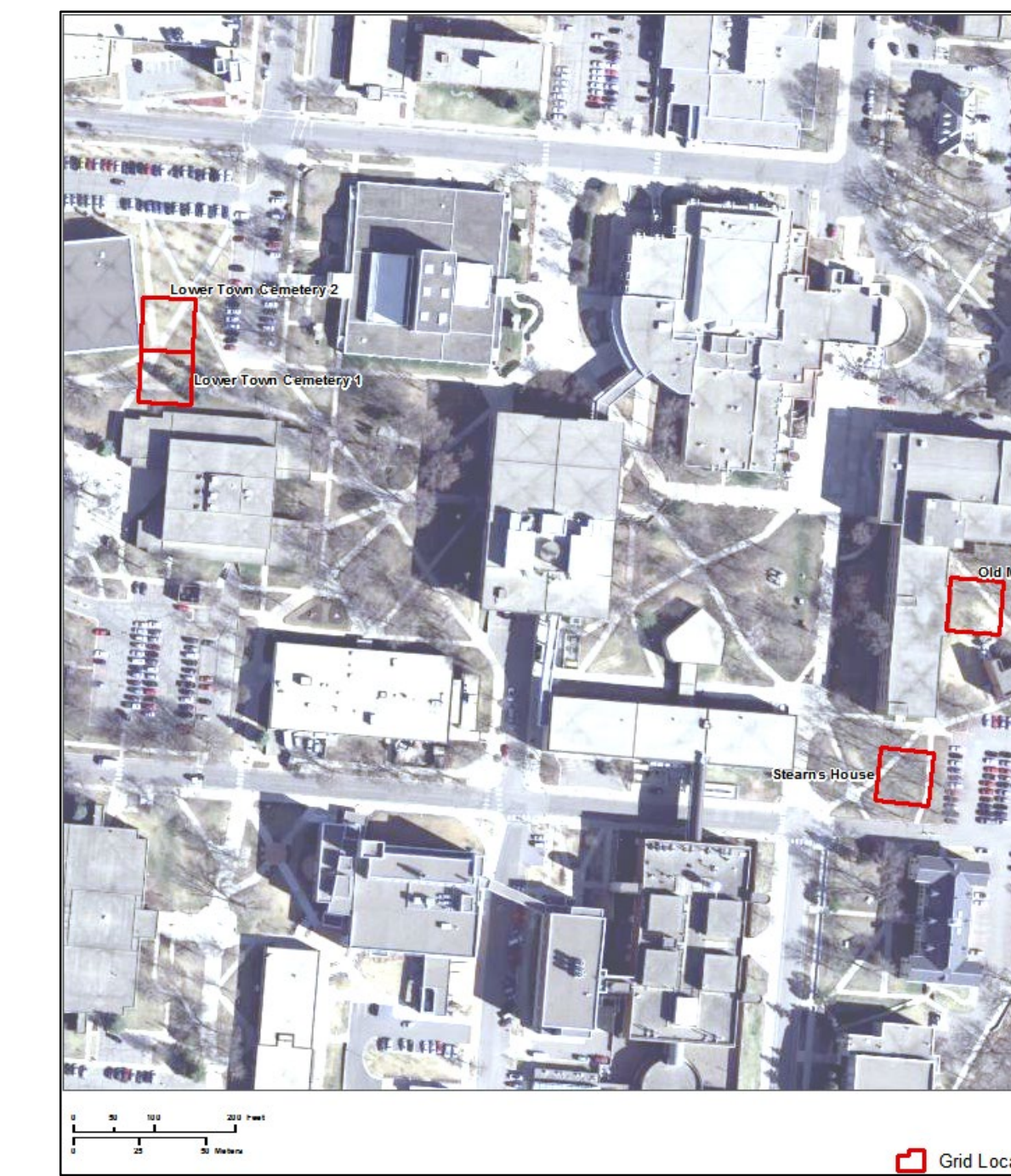
SCSU Today



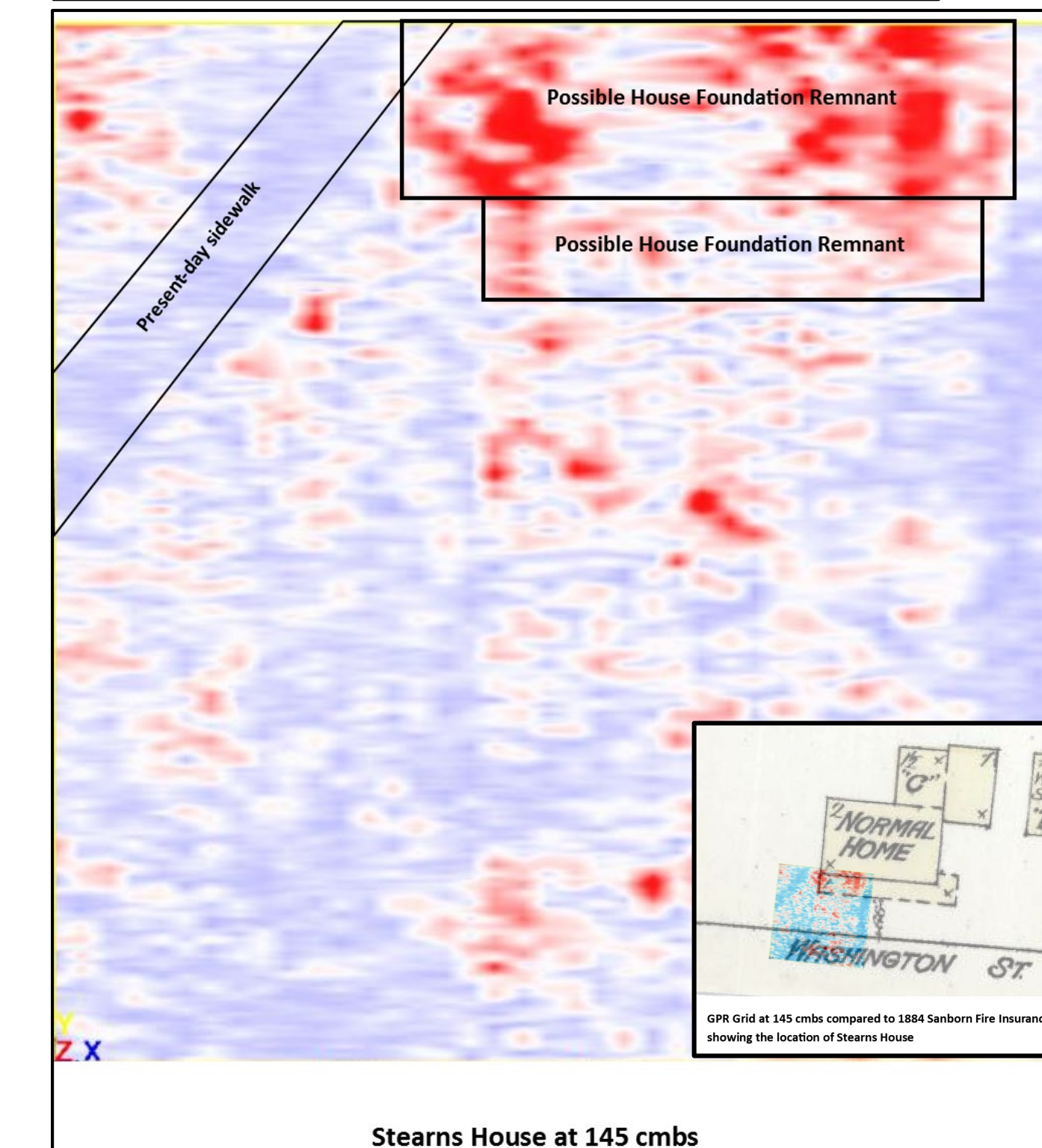
From Lower Town to St. Cloud State: The Cemetery, Stearns House, and Old Main



The Cemetery, Stearns House, and Old Main: Ground Penetrating Radar Survey Results



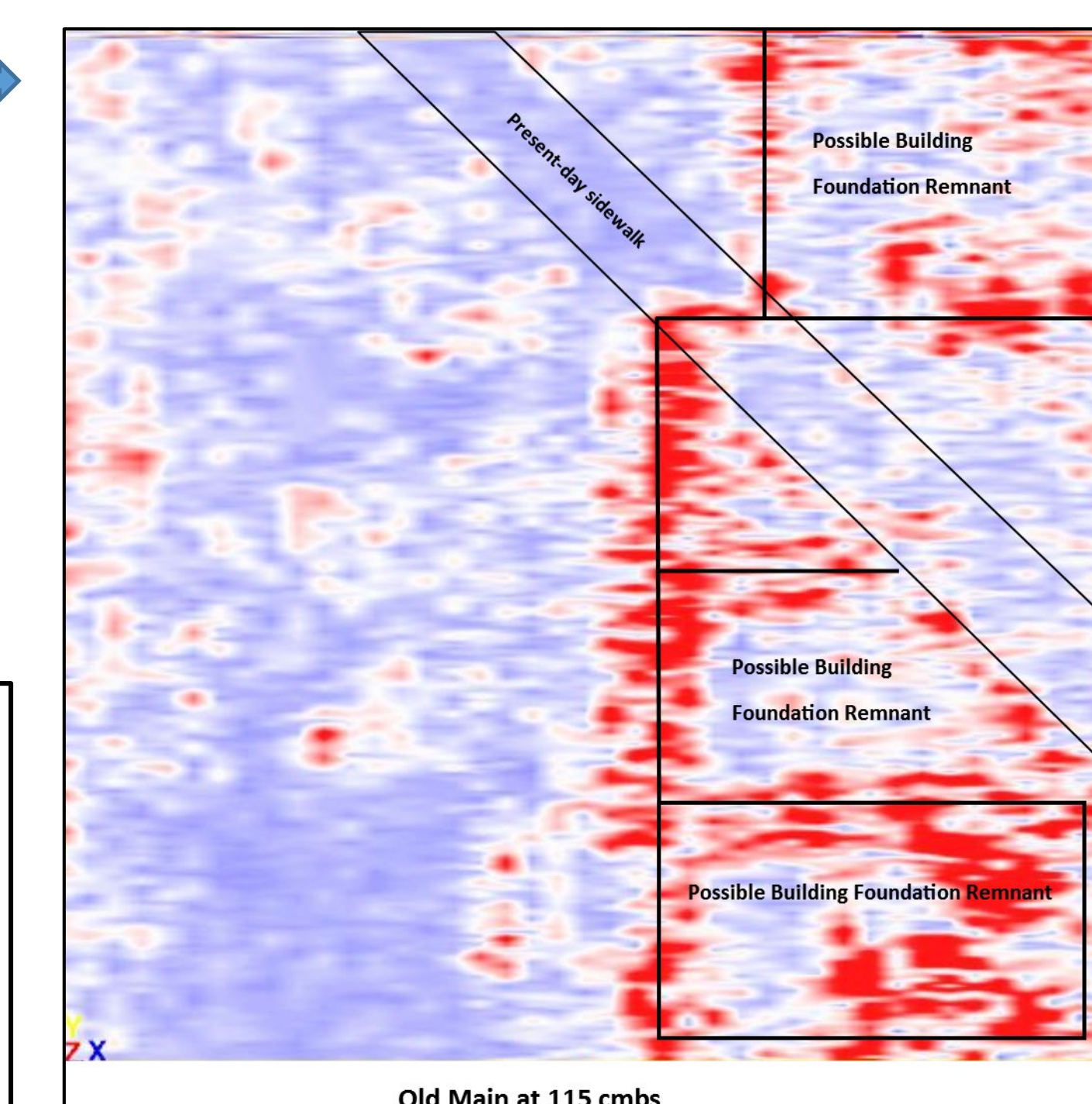
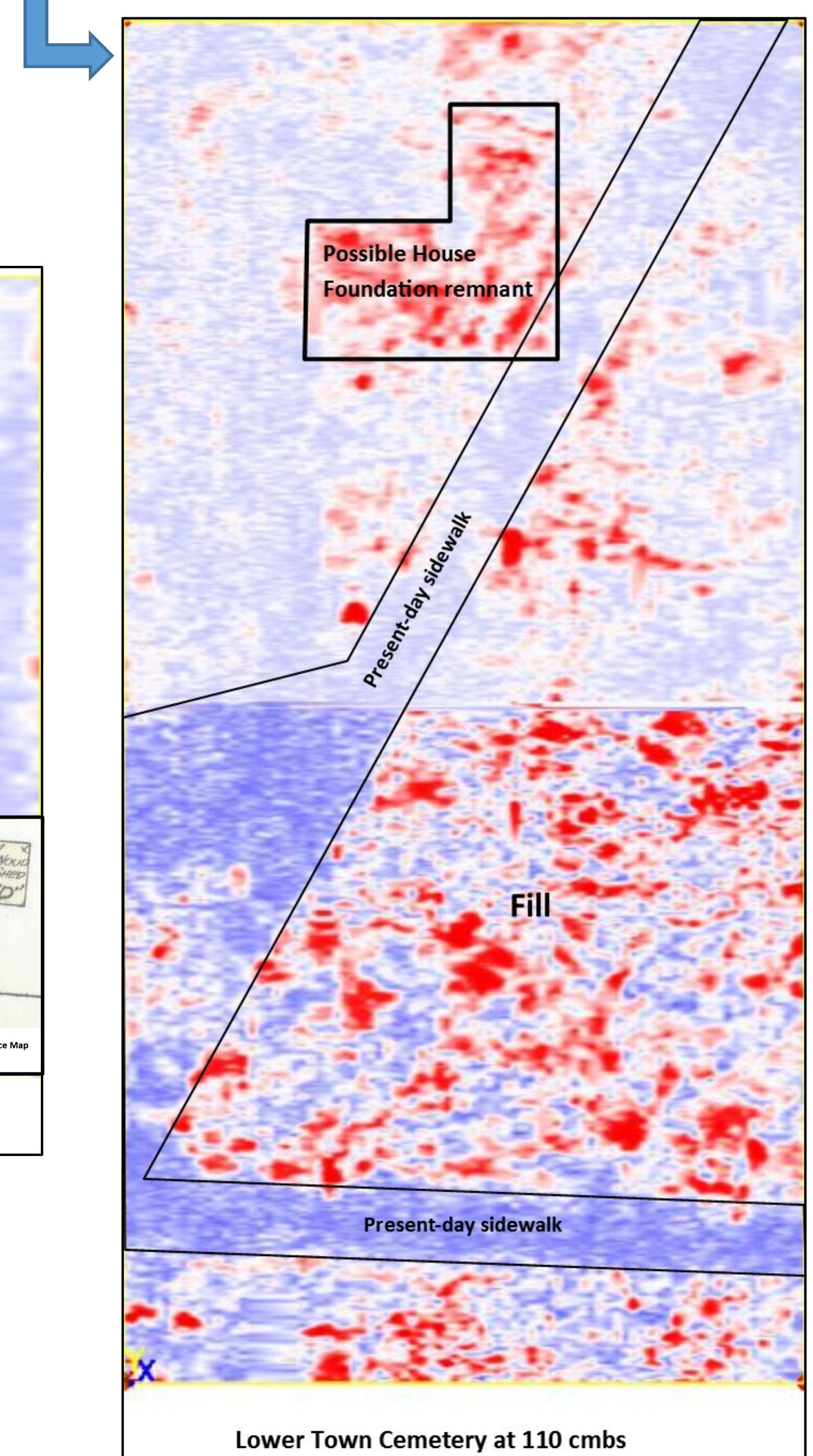
Results of the GPR investigation near the former location of the Lower Town Cemetery did not reveal the presence of unmarked graves. A thick layer of fill soil with tree root and modern utility disturbances was evident from the surface to approximately 100 centimeters below surface (cmbs). At 110 cmbs, a possible house foundation remnant was identified within the northern GPR grid. This would be consistent with historic use of the block for residential housing from the late 1800s through the early 1900s.



GPR investigations in proximity to the Stearns House revealed a thick layer of modern fill. At approximately 150 cmbs, a rectangular anomaly becomes apparent in the northern portion of the grid; possibly an intact portion of the Stearns House. Inset: 1884 Sanborn Fire Insurance Map overlain with the location of the identified anomaly.

Results of the GPR investigation at Old Main were also promising. At approximately 115cmbs, several rectangular anomalies were identified. Their shape and size are suggestive of building foundation remnants, the southernmost of which may possibly contain rubble in-filling.

GPR investigations at St. Cloud State University suggest it is likely that portions of the historic fabric of SCSU remain present and buried beneath the modern campus. The results of the GPR investigation can be used as a guide for future archaeological excavation activities at SCSU.



Acknowledgements: Funding for this project was provided by a SCSU Student Scholarly Grant awarded to Jonathan Corbin.