

## SPORTS

Men's golf looks to great season.



# Take A Look Inside

### News...

Scholarships given to students.  
*See Page 2*

### Feature News...

Charlie Awards.  
*See Page 4*

### Sports...

Golfers start their season.  
*See Page 8*

### Comics...

Crosswords, puzzles and cartoons.  
*See Page 6*

### Classifieds...

See our classifieds section.  
*See Page 7*

### Feature News...

College Booze Binge  
*See Page 4*

### Internet...

Also, check out Prospectus Online at <http://www.parkland.cc.il.us/prospectus/>

## SIU to do national study

CARBONDALE Ill. (CPX) Researchers at Southern Illinois University at Carbondale have won a \$577,804 contract from the U.S. Department of Education that will allow them to conduct the nation's largest and most comprehensive study to date on the American college student's relationship to alcohol, drugs and violence.

The university's Core Institute, which has monitored alcohol and drug use on the nation's college campuses since 1989, will conduct the study. Next year, it will ask 200,000 college students on 225 cam-

pus across the nation to answer an anonymous survey. Students and schools will be selected at random.

In addition to demographic data, students will be asked about their drinking habits, illegal drug use, experience with unwanted sexual contact and crimes. They'll also be asked to answer questions about violent behavior.

The study's results, expected to be published in 2000, will serve as a guide for governmental policy and prevention programming, said Cheryl A. Presley, project director and head of the Core Institute.

## Stu-go Election Results

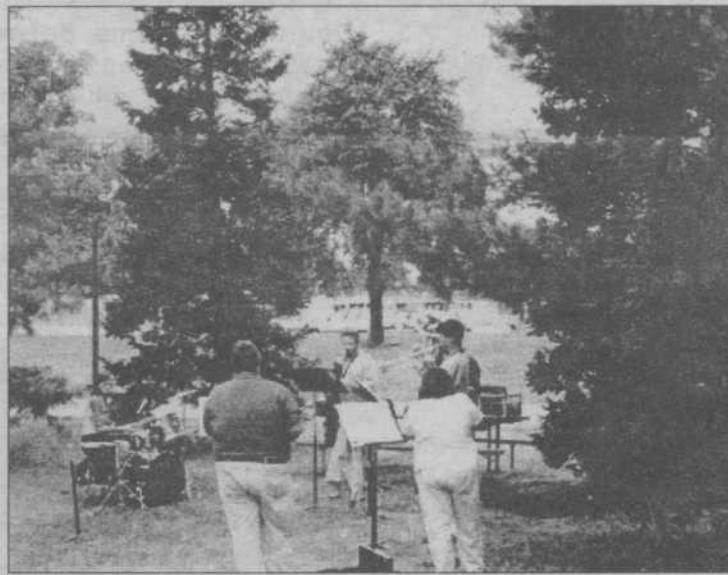
These students were elected Senators.

Sarah Dolske  
Gregg Jackson  
Kory Langhofer  
Steve Legue  
Leslie McNair  
Nam Nguyen  
Lorena Purissimo  
Melissa Roberts  
Pable Saavedra

Secretary  
Adriana Arnal

Student Trustee  
Rory Nolan

Treasurer  
Johnny Lyons



## Prospectus asks: What Do You Think?

Please put your completed questionnaire in the box, located on the center desk in the Welcome Center. Thanks for your participation. Results will be published in next Wednesday's issue of the *Prospectus*.

**Impeachment is a trial. If the House of Representatives votes to impeach, the person is tried in the Senate.**

Question 1: Do think President Clinton:

\_\_\_ should...

...be impeached for his actions in regard to Monica Lewinsky?

\_\_\_ should not...

Question 2: If President Clinton is impeached, do you think he will be found:

\_\_\_ not guilty

\_\_\_ guilty

Question 3: Assume that today President Clinton asked for your advice in this situation. What would you advise him to do?

Please give us any other thoughts you have on the Clinton case:



**Does it exist?**

**New Philosophy club**

By: TOBIAS G. SIMPSON  
PROSPECTUS STAFF WRITER

Is euthanasia (mercy killing) morally acceptable?

This question will be the topic of the first debate being held by the Philosophy club, Tuesday, September 29 in the Gallery Lounge at noon.

Parkland's newest student organization may or may not exist.

Those interested in discussing and investigating the universal questions which confront all of mankind are welcomed to attend.

Some of those questions include:

- Who is God?
- How does one pursue happiness?
- Does man choose his own destiny?
- What makes an action morally right or wrong?

"I think this club fills a void," said Don Nolen, professor of Philosophy and the club's advisor. "I think a lot of people are searching for some of these basic truths."

The club meets on a weekly basis (assuming time is real) and engages in lively and critical discussions on a wide variety of topics.

This club is dedicated to freedom of thought and welcomes all people and all ideas.

The club's professed goal is to sharpen one another both mentally and scholastically.

The club also hopes to stimulate other students' thought and discourse by holding a series of public debates.

Some of the ideas being considered for debate topics are: Is euthanasia morally acceptable? and Will machines ever have free will?

The philosophy club meets every Thursday at 1 p.m. in the upstairs C-wing lounge.

If you have any questions please contact the club President Kory Langhofer at 367-1427 or the club's Advisor Don Nolen at 351-2526.

**Steffenson new president of Alpha Psi Eta**

Craig Austin Steffenson, of Champaign, recently was elected president of the Alpha Psi Eta chapter of Phi Theta Kappa international honorary society for two-year colleges.

Tobi Wilder, of Champaign, was elected temporary vice president; Kathryn Nelson, of Rantoul, secretary/treasurer,

and Barbara Greenfield, of Peotum, Inter-Organizational Council representative.

Phi Theta Kappa recognizes academic excellence, provides scholarships to four-year colleges, and provides opportunities for leadership development.

**Angela Crowder winner of Huff Scholarship**

Angela Crowder, of Urbana, a graduate of Danville High School, is this year's recipient of the Catherine and Leo Huff Memorial Scholarship.

Crowder is a sophomore

studying nursing at Parkland.

The Huff Memorial Scholarship is awarded in honor of the parents of Joanne Huff, professor of nursing at Parkland who retired this summer.

The biggest threat to depression is your awareness of it.

#1 Cause of Suicide  
**UNTREATED DEPRESSION**  
<http://www.save.org>

**Werner folk-pop concert Oct. 8**

Folk-pop singer/songwriter Susan Werner will perform her style of adult alternative music during a concert at 7:30 p.m. Oct. 8 in the Parkland Theatre.

Werner recently released her fourth CD, "Time Between Trains." She sings songs of "deep pssions, difficult emotions, and subtle humor," infused with elements of jazz, folk influences, and melodic pop, according to her biography.

For tickets, call: 217/373-3818

**Hedeman, new Uni High principal Leake to host 'Live and Learn'**

Dave Leake, coordinator of the William M. Staerkel Planetarium, will take over the position of host of the "Live and Learn" TV show.

He replaces John Hedeman, who recently was named principal of University High School in Urbana.

Leake's first program in the series will feature Parkland's Office of Women's Programs and Services, with guests Mary Lee Sargent, acting director, and Imani Bazzell, SisterNet coordinator for the "Get with the Program" confer-

ences for African-American women. The show covers opportunities offered by Parkland to women, including workshops, brown bag talks, free conferences, scholarships, and referrals.

"Live & Learn Women's Programs and Services" will air on the Parkland Channel on Sundays in October at 8 p.m.. It also will be broadcast during the Women's Studies Hours, Mondays at 9 p.m.

"Live and Learn," produced in Parkland's TV studio, is for those interested in learning

but not necessarily in college credit. Topics for the show are taken from the Continuing Education publication on Parkland's non-credit offerings, also called "Live & Learn." The first episode, on Adult Basic Education, aired two years ago.

The Parkland Channel is located on Channel 9 of Time-Warner Cable of Champaign-Urbana, on Channel 50 of Heartland Wireless Cable, and soon will be available in several area communities served by Triax Cablevision.

don't believe everything you feel.

You've been pulled from the world you once knew. There's a reason for it. It's depression. It's very prevalent. But it's also very treatable.

**TREAT DEPRESSION**  
#1 Cause of Suicide  
<http://www.save.org>

It's onset can be so subtle you don't notice it.

**IT CAN KILL YOU IF YOU DON'T RECOGNIZE IT.**

Depression strikes millions indiscriminately. Depression is MOST dangerous when it goes unrecognized. Always be aware of the threat, and don't always believe everything you feel.

**UNTREATED DEPRESSION**  
#1 Cause of Suicide

Public Service message from SA/VE (Suicide Awareness-Voices of Education) <http://www.save.org>

**Brotherson scholarship awarded to Sherryl Ecker**

Sherryl Ecker, of Loda, is the recipient of the Brotherson Family Scholarship at Parkland.

The Brotherson scholarship is awarded to a woman

in the Early Childhood, Elementary, or Secondary Education programs. Ecker is studying elementary education.

**Berry receives Tonia Anding Scholarship**

Vanessa Berry, sophomore nursing student, has been named this year's recipient of the Tonia Anding Memorial Scholarship.

The scholarship, established in memory of Tonia

Anding, daughter of Rebecca Dalton, Assessment Center assistant at Parkland, is awarded annually to a nursing student who has earned at least 12 credit hours of nursing courses with a mini-

**P**rospectus

Managing Editor:  
Cory Gibson  
Production Manager

Production: Tim Higgins  
Advertising Manager: Nikki Hodge  
Advertising Staff: Amy Kincald, Adam Owen

Advisor: Doris Barr  
Staff Writer: Tobias Simpson, Barbara Torbeck, Joel Osinga

Online Editor: Caroline Jourdes  
Business Manager: Melany Jackson

Next Publication Date:  
Wednesday, September 30, 1998

Ad Deadlines:  
Noon, Monday, September 28, 1998

News Office: 217 351-2216  
Advertising: 351-2278  
373-3855  
Fax: 373-3835

Online Address:  
<http://www.parkland.cc.il.us/prospectus/>

The Prospectus is published weekly during the fall and spring semesters, and monthly during the summer session by students of Parkland College, located at:  
2400 West Bradley Avenue  
Champaign, Illinois, 61821-1899.

KHP://www.parkland.cc.il.us/prospectus

# College Enrollment at Record High

BY: CHRISTINE TATUM  
COLLEGE PRESS EXCHANGE

CHICAGO- More students are heading to college than ever, according to a study released Monday by the U.S. Department of Education.

A record 14.6 million freshman enrolled in school this fall about 240,000 more first year students than a year ago.

The booming freshman classes are directly linked to an increasing number of high school graduates. Last year, a record breaking 67 percent of high school seniors went directly to college. That number is projected to rise another 17 percent over the next decade, said Tom Snyder, director of the department's National Center for Education Statistics.

"It's very difficult to say ex-

actly what it is that makes up peoples minds to do things," he said. "But in this case, many people feel that getting a college education is a really big help when it comes to finding a good-paying job. And they're right." While enrollment of non-traditional students particularly those older than 35, is up 7 percent, it's the younger crowd that's driving the frenzied pace at which colleges

and universities are expanding their living quarters and support services. Schools nationwide, including Stanford University and University of Delaware, are reporting packed dorms.

Some schools will have to work hard - perhaps even to raise academic requirements - to control the wave of students expected to crash through their doors within the next 15

years. The report predicts that 52.7 million will enroll in grade school this fall, surpassing last year's record by about 500,000. The record-breaking pace is expected to continue at the elementary and secondary schools for at least the next eight years, with about 54.3 million children attending U.S. schools by 2008.

## Could provide computer network certification

# H.S. students offered training at P.C.

BY: TOBIAS G. SIMPSON  
PROSPECTUS STAFF WRITER

If your a student in one of the ten local high schools and think college may not be the way you want to go after school, Parkland College may have training you would be interested in.

Parkland will soon be offering computer training in a joint venture with Cisco.

Cisco is a large networking company that sponsors courses leading to certification in 39 states and five nations.

Certification includes passing independent tests which would validate the students ability to perform in computer related jobs.

Upon certification, a high school graduate with some experience would make around \$23,000 to \$28,000 per year in this area.

An adult would make slightly more, as much as \$32,000.

These figures represent very resealable salaries coming right out of high school, salaries that a family could be supported on.

Furthermore, there is a very high demand for workers in the computer field.

The University of Illinois, Parkland and Carle are just three examples of companies

in this area that make constant use of computer networks.

The contract Cisco signed with Parkland includes around \$14,000 in new computer equipment and the certification of several instructors.

The first teacher to be certified will be David Tancig, the Computer Network Administration program director.

Parkland hopes to have the new program up and running by next fall, maybe earli-

er.

The high school version of the program will probably take four semesters and range from the theoretical to actual hands-on networking.

It is hoped that through this program many students that don't want to go to college, but still want a good paying job with prospects for promotion right out of high school will have that opportunity.

## STUDENTS join intramural Events

### Upcoming events are :

- |                          |                              |
|--------------------------|------------------------------|
| <b>Euchre Tournament</b> | <b>Team Volleyball</b>       |
| <b>Bowling</b>           | <b>3-point shooting</b>      |
| <b>8-ball Tournament</b> | <b>Free Throw Contest</b>    |
| <b>Slam Dunk Contest</b> |                              |
| <b>Starting Sept.30</b>  | <b>Currently in Progress</b> |
| <b>5 On 5 Basketball</b> | <b>Parkland Trotters</b>     |
|                          | <b>Open Gym</b>              |

## Sign up now !!! Across from P105 or X153

To Full and Part Time Faculty and Staff:

The Fitness Center in P128 is now available for your use. In order to use the facility, the following procedures must be followed:

- Register for either a credit or non-credit course through Admissions
- Fill out and have signed a tuition waiver from through Human Resources
- Turn in all paperwork to the cashier's office

### Credit Classes (PEC 103, 147, 203 & 247)

<b>Mon -Thurs</b>	<b>Mon - Fri</b>
9:00 - 11:50 a.m.	9:00 - 11:00 a.m.
1:00 - 2:50 p.m.	1:00 - 2:50 p.m.
6:00 - 6:50 p.m.	

### Non-Credit (NCR 850)

<b>Mon - Thurs</b>	<b>Mon - Fri</b>
7:00 - 9:00 a.m.	7:00 - 9:00 a.m.
12:00 - 1:00 p.m.	12:00 - 1:00 p.m.
3:00 - 6:00 p.m.	3:00 - 5:00 p.m.
7:00 - 9:00 p.m.	

Enrollees in credit classes can access the facility anytime, but NCR students may use the facility only during non-credit hours.

Any questions can be directed to Tim Cochrane, Director of Fitness & Wellness at extension 2439.

Sign up now !!!

Sign up now !!!

# Charlie Awards for Ten 10-Minute plays

BY: CHARLIE FILLENWARTH  
PROSPECTUS STAFF WRITER

Parkland Theatre's first production of the season, *Ten 10-Minute Plays*, kicked off last Wednesday night with a preview at a discounted price. Even at full price, the production is a bargain. The audience is treated to humans dressed as animals, off the wall (or rack) comedy, two men controlled by their sexual drive, a couple experiencing the ups and downs of a "mature" relationship, and a wild ten minutes in the show business industry.

And that's just the first act.

The second act features three mothers, a silent roommate, an angry lover, a wild workplace, and a statue. This production was amazing and well directed. Parkland students will be proud of the Theatre department for putting on this high quality performance.

A terrific performance deserves awards. Since this performance was terrific, I am introducing my own version of the Tonys. I call it the Charlies. Here are the presentations:

•**BEST STAGE DESIGN**--The nominees are: *Off The Rack*, *Finger Food*, and *A Bowl of Soup*. The Charlie goes to: *A Bowl of Soup*.

The decoration of the studio apartment enhances the atmosphere. The audience is drawn into the setting and it makes it seem more homey.

•**BEST COSTUMES**--The nominees are: *Duet for Bear and Dog*, *Andre's Mother*, and *Catastrophe*. The Charlie goes to: *Andre's Mother*. Jay Kilgore looked the bomb in his three-piece suit. Plus, Zhenesse Heinemann looked stunning in her funeral dress.

•**BEST MAKEUP**--Nominees: *Healthy Primates*, *Duet for Bear and Dog*, and *Courtin Prometheus*. The Charlie goes to: *Duet for Bear and Dog*, hands down. The makeup made Dori Phelps and Joe Hodge look like a bear and a dog.

•**BEST SUPPORTING ACTRESS**--The nominees: Janice Rothbaum (*Andre's Mother* in *Andre's Mother*), Joanne Capes (*Creativity* in *Life Happens*), Mindy Reed (*Woman in Duet for Bear and Dog*). The Charlie goes to: Janice Rothbaum for *Andre's Mother*. Getting an audience to understand you by speaking is difficult in itself. But to make us feel her pain with-

out saying one word is what helps make this play go as far as it did.

•**BEST SUPPORTING ACTOR**--Once again, the nominees: Joel Levi Singerman (*Rob in A Bowl of Soup*), Bryan Mathis, Jr. (*Dave in Louis and Dave*), and Nicholas Koch (*Arthur in Andre's Mother*). The Charlie goes to: Joel Levi Singerman for *A Bowl of Soup*. Once again, not talking wins this award. He doesn't speak until the very end, but by that time, we have seen the pain in his actions.

•**BEST ACTRESS**--The three nominees are: Ellen Bean Larabee (*She in Healthy Primates*), Tamera McDaniel (*Adrienne in Off the Rack*), and Amy Vokac (*Mona in Finger Food*). The Charlie goes to: Tamera McDaniel for *Off The Rack*. From the moment she steps on stage, you know what her character is about: confidence. She showed the confidence to play Adrienne, who thought herself superior to Pauline. Only Tamera could have pulled it off on this night.

•**BEST ACTOR**--The nominees are: Buck Zachary (*Denny in Finger Food*), Jay Kilgore (*Cal in Andre's*

*Mother*), Bryan Hayward (*Protagonist in Catastrophe*). With all due respect to Jay and Bryan's performances, the nod goes to Buck. He goes from an anxious cameraman to a wild lover in ten minutes. He had everyone eating out of the palm of his hand.

•**BEST OVERALL**--The nominees are (five this time): *Off The Rack*, *Finger Food*, *Andre's Mother*, *A Bowl of Soup*, and *Life Happens*. Two comedies, two dramatics vs. an abstract, thinking-man's play. I have to go with *Andre's Mother*. A well-acted play, very emotional. A fine piece of work.

Because the direction of all the plays was superior, I couldn't pick the best. So I introduce the first ever 10-way tie for an award. Every director wins here. But, as is the case with all awards, someone will eventually get left out and someone's feet are bound to get stepped on. I apologize to all the performers I couldn't include here. But they all did a wonderful job and deserve a standing ovation.

## Study 4 years later...

# College booze binges about same

BOSTON, MA — The nation's preeminent survey of college drinking finds that "binge drinking" continues largely unabated on American campuses today, based on its second survey of 116 nationally representative universities and colleges across the country.

The report, released at a press conference at the Harvard School of Public Health in Boston, is a follow-up to the 1993 landmark study and is published in the September issue of the *Journal of American College Health*.

The survey finds that one third more drinkers "drink to get drunk" in 1998 compared to 1993, with the proportion increasing from 39 percent in 1993 to 52 percent in 1997.

The number of drinkers who were drunk three or more times in the past month increased by 22 percent. Four of five fraternity and sorority members are still binge

drinkers.

The report, from the Harvard School of Public Health College Alcohol Study, was based on the responses of 14,521 students in 1997 and compared to those of 15,103 students surveyed in 1993.

The study involved students at 116 colleges in 39 states and was conducted under a grant from the Robert Wood Johnson Foundation. Henry Wechsler, Ph.D., Director of College Alcohol Studies at the Harvard School of Public Health was the principal investigator of the study.

Overall, two of five students (42.7 percent) were reported to be binge drinkers in 1997, a slight decrease from 44.1 percent in 1993. Half of that group — one in five students (20.7 percent) were frequent binge drinkers compared to 19.5 percent in 1993. Significantly, more students abstained from drinking in 1997 (19.0), up from 15.6 percent in 1994.

"There has been a very

small drop in binge drinking between 1993 and 1997, due mainly to an increase of students who do not drink at all. However, this has been more than offset by the increased intensity of drinking among those who drink: more drinking to get drunk, more frequent drunkenness and more alcohol-related problems such as drinking and driving," said Dr. Wechsler.

"...For those looking for a glimmer of hope, the increase in the proportion of abstainers is important," continued Wechsler. "Campuses seem to be polarized by binge drinking with the numbers of abstainers increasing in the face of more disruptive drinking behavior. Abstainers may be responding to alcohol education efforts or they may simply be repulsed by the binge drinking way of life."

The self-administered questionnaire instructed participants to define a "drink" in equivalent amounts of alcohol:

a 12-oz. (360 ML) bottle or can of beer; a 4-oz. (120 ml) glass of wine; a 12-oz. (360 ml) bottle or can of a wine cooler; or a shot (1.25 oz. or 37 ml) of liquor, either straight or in a mixed drink.

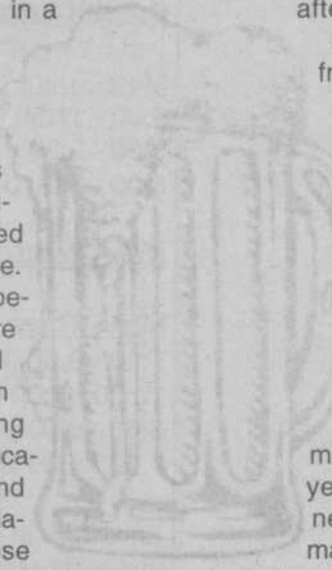
The study defined heavy episodic or binge drinking as the consumption of at least five drinks in a row for men or four drinks in a row for women during the two weeks before the students completed the questionnaire.

Drinkers experienced more alcohol-related problems in 1997 affecting their health, education, safety, and interpersonal relationships. These included driving after drinking, damaging property, getting injured, missing class-

es, and getting behind in school work.

In 1997, one in five students (19.8 percent) experienced five or more different alcohol-related problems, an increase of 22 percent since 1993. In 1997, more than one third of the students surveyed (35.8 percent) reported driving after drinking, a 13 percent increase from 1993.

...The student characteristics associated with higher binge drinking rates in 1997 were the same as those associated with higher rates in 1993. They include being: male, white, aged 21 years or younger, never having been married, belonging to fraternities or sororities, living in fraternity or sorority houses, and bingeing in high school.



FOR the EDUCATION and RESEARCH COMMUNITY

**AAA**  
—S&P and Moody's rating for TIAA\*\*

★ ★ ★ ★ ★  
—Morningstar ratings for the CREF Global Equities Account, CREF Equity Index Account, and CREF Growth Account\*

**"...America's Top Pension Fund."**  
—Money Magazine, January 1998

*Your service bowled me over!*  
—William Ravdin, TIAA-CREF Participant

**HIGH MARKS FROM MORNINGSTAR, S&P, MOODY'S, MONEY MAGAZINE AND BILL.**

We take a lot of pride in gaining high marks from the major rating services. But the fact is, we're equally proud of the ratings we get every day from our participants. Because at TIAA-CREF, ensuring the financial futures of the education and research community is something that goes beyond stars and numbers.

We became the world's largest retirement organization by offering people a wide range of sound investments, a commitment to superior

service, and operating expenses that are among the lowest in the insurance and mutual fund industries.\*\*\*

With TIAA-CREF, you'll get the right choices—and the dedication—to help you achieve a lifetime of financial goals. The leading experts agree. So does Bill.

Find out how TIAA-CREF can help you build a comfortable, financially secure tomorrow.

Visit our Web site at [www.tiaa-cref.org](http://www.tiaa-cref.org) or call us at 1 888 219-8310.



Ensuring the future for those who shape it.™

\*Source: Morningstar, Inc., July 31, 1998. Morningstar is an independent service that rates mutual funds and variable annuities. The top 10% of funds in an investment category receive five stars and the next 22.5% receive four stars. Morningstar proprietary ratings reflect historical risk-adjusted performance and are subject to change every month. They are calculated from the account's three-, five-, and ten-year average annual returns in excess of 90-day Treasury bill returns with appropriate fee adjustments, and a risk factor that reflects performance below 90-day T-bill returns. The overall star ratings referred to above are Morningstar's published ratings, which are weighted averages of its three-, five-, and ten-year ratings for periods ending July 31, 1998. The separate (unpublished) ratings for each of the periods are:

Period	CREF Stock Account Star Rating/ Number of Domestic Equity Accounts Rated	CREF Global Equities Account Star Rating/ Number of International Equity Accounts Rated	CREF Equity Index Account Star Rating/ Number of Domestic Equity Accounts Rated	CREF Growth Account Star Rating/ Number of Domestic Equity Accounts Rated	CREF Bond Market Account Star Rating/ Number of Fixed Income Accounts Rated	CREF Social Choice Account Star Rating/ Number of Domestic Equity Accounts Rated
3-Year	4/2,120	4/459	5/2,120	5/2,120	4/719	4/2,120
5-Year	4/1,363	5/235	N/A	N/A	4/487	4/1,363
10-Year	4/674	N/A	N/A	N/A	N/A	N/A

Morningstar does not rate money market accounts, and the other TIAA-CREF accounts (TIAA Real Estate and CREF Inflation-Linked Bond) are too new to be rated. Past performance does not guarantee future results. Accumulation unit values and returns will vary. \*\*These top ratings are based on TIAA's exceptional financial strength, claims-paying ability and overall operating performance. †Based on assets under management. \*\*\*Standard & Poor's Insurance Rating Analysis, 1998; Lipper Analytical Services, Inc., *Lipper-Dirivest's Analytical Data*, 1998 (Quarterly). CREF certificates and interests in the TIAA Real Estate Account are distributed by TIAA-CREF Individual and Institutional Services. For more complete information, including charges and expenses, call 1 800 842-2733, extension 5509, for the CREF and TIAA Real Estate Account prospectuses. Read them carefully before you invest or send money.



SEPTEMBER 1998

THE PARKLAND CHANNEL  
Time Warner Cable of C-U, Channel 9  
Heartland Wireless Cable, Channel 50

WEDNESDAY, SEPTEMBER 23

6:00 p.m. **SOMETHING STRANGE**  
Two productions, directed by Instructor Sarah Daniel, from College For Kids summer 1998. The first program, which begins with unusual flickering lights, is from the creative drama class; the second is from the mask making and mobile class.

7:00 p.m. **LIVELY VERBS**  
Professor Sally Wallace, PEW Scholar

7:30 p.m. **CREATING INCLUSIVE EDUCATIONAL COMMUNITIES**  
Educators tell about making the classroom more user friendly for all students.

8:00 p.m. **UPON REFLECTION:**  
Ethnicity and Race, Tetsuden Kashima

8:30 p.m. **UPON REFLECTION:**  
Ethnicity and Race, Ellis Cose

9:00 p.m. **AUTHOR, AUTHOR LEADERSHIP BY DESIGN:**  
Strengthening Integrity in Higher Education. E. Grady Bogue, Professor, Department of Educational Leadership, University of Tennessee.

FRIDAY, SEPTEMBER 25

1:00 p.m. - 3:00 p.m. **CROSSROADS CAFE**  
Rush to Judgement; Buyer Beware; No Vacancy; Turning Points

SATURDAY, SEPTEMBER 26

8:00 p.m. - Midnight **CLASSIC ARTS SHOW CASE**

SUNDAY, SEPTEMBER 27

10:00 a.m.-6 p.m. **CLASSIC ARTS SHOW CASE**

6:00 p.m. **PARKLAND CHALLENGE**  
High School Quiz Bowl

6:30 p.m.  
7:00 p.m.

7:30 p.m.

8:00 p.m.

MONDAY, SEPTEMBER 28

6:00 p.m. **PARKLAND REPORT**  
The Parkland Theatre Host Tom McDonad talks with Artistic Director Randi Collins Hard, about the upcoming season in the Parkland Theatre.

6:30 p.m. **LEADERSHIP & CORE VALUES**  
President Zelema Harris's welcome back speech to Parkland faculty and staff, Fall 1998.

7:00 p.m. **THINKING COLLEGE EARLY**  
Preparing Academically & Financially GOALS 2000: USDOE Town Meeting

8:00 p.m. **YOUNG CHILD WITH MOTOR CHALLENGES**  
APPLES Magazine

9:00 p.m. **GET WITH THE PROGRAM**  
African-American Women, Healthy & Strong Conference & Health Fair at Parkland, May 4, 1998. Dr. Zelema Harris, Imani

Blue Ridge Vs GCMS  
Unity Vs Blue Ridge

**PARKLAND REPORT:**  
**STATE OF THE COLLEGE**  
President Zelema Harris

**FOR ARTS SAKE**  
Cutting through Tradition: Art Quilts by Deborah Fell, Judy Husband, and Mary McDonald.

**PARKLAND COMMUNITY FORUM POWER IN PLANNING: KEEP YOUR MONEY WORKING**  
Host Louis Allen talks with local financial experts. First in a series to help us plan for the expected and unexpected expenses in our lives.

CLASSIC ARTS SHOWCASE

Short segments of opera, ballet, orchestra, and other performances, film clips, museum visits. Saturday 8 p.m. - midnight and Sunday 10 a.m. - 6:00 p.m.

TUESDAY, SEPTEMBER 29

6:00 p.m. **PRISMA, ENGLISH**  
A reliable Half-day Elementary School; Centre For Art and Media Technology

6:30 p.m. **PRISMA, GERMAN**

7:00 p.m. **PRISMA, SPANISH**

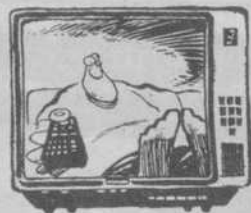
7:30 p.m. **PRISMA, FRENCH**

8:00 p.m. **THE GERMAN SCENE, ENGLISH**  
Saxony-Anhalt Draws Foreign Investors; Centro in Oberhausen Symbolizes Radical Change in Ruhr; Research on Bavaria's Zugspitze; Die Prinzen, Germany's Princes of Pop; Konrad Adenauer Foundation Study Tours; State-of-the-Art Recycling Transforms Old Cars; German Medical Technology in Russia; Monchengladbach, Textile and Clothing

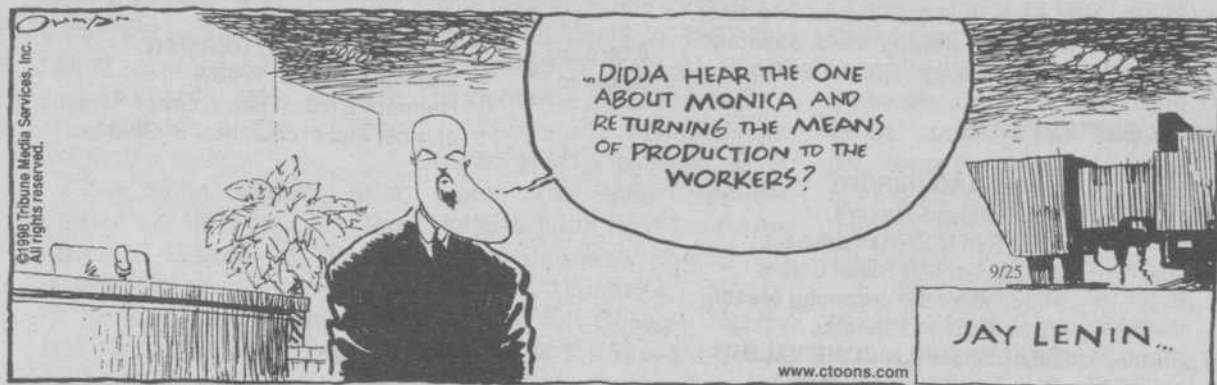
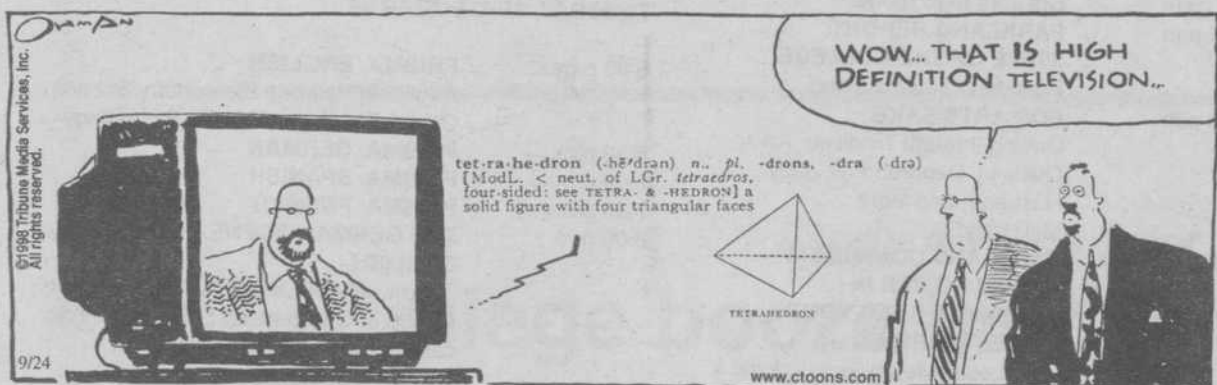
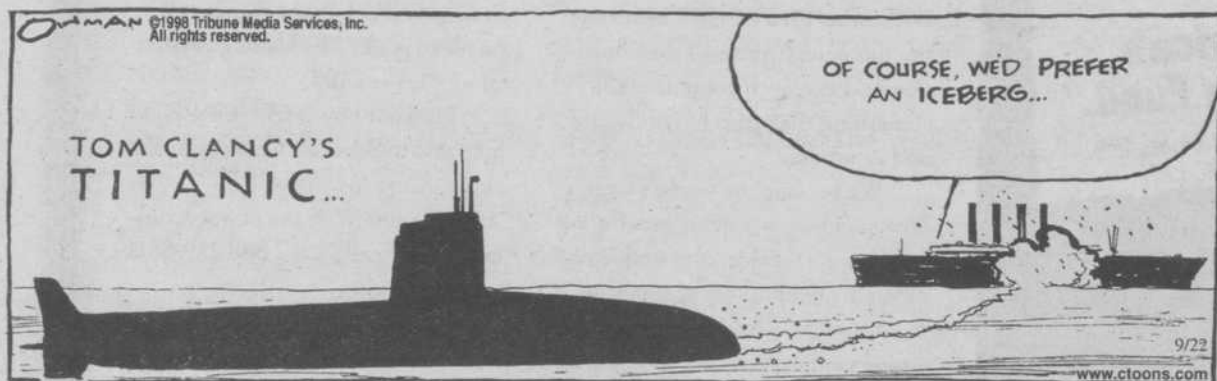
8:30 p.m. **GERMAN SCENE, GERMAN**

9:00 p.m. **GERMANY LIVE, TRIER**  
Germany's oldest city. A city of Romans, of wine, and of churches. In German.





**MIXED MEDIA**  
by Jack Ohman



# CLASSIFIEDS

**SPRING BREAK**  
Cancun, Florida, Jamaica, South Padre, Bahamas, Parties, Prices. Book Early and Save!! Earn money + Trips! Campus Reps/Organizations Wanted Call Inter-Campus Programs 1-800-327-6013 www.icpt.com

**BRYA INSURANCE**  
Pekin Auto Insurance Rates by Phone 355-5555 First Time Buyers? No Problem Monthly rates by phone in Country Fair Firestone.

**FOR SALE**  
Brother Word Processor, comes equipped with 3.5 disk drive and monitor. Like new, will sell for cheap! For more information call in the evening at 351-7851.

**STUDENT SEEKING**  
housing for fall-contact Victoria at 485-3448 or e-mail me at Toria1973@aol.com

**NOW HIRING**  
MONICAL'S PIZZA  
Pizza Maker, waiter/waitress host/hostess. Apply within 103 S. Kirby, Champaign. NO Phone calls please.

**Pregnant?**  
*We're here to help!*  
We offer free pregnancy tests, counseling, information and caring support for as long as you need us.  
Drop in or call us at  
(217) 351-7744 or 1-800-550-4900  
**free, nonjudgmental, and confidential!**  
Hours: Mon. - Sat. 10 a.m. - 1 p.m.  
110 1/2 N. Neil, Champaign  
*Get the Facts before you choose!*



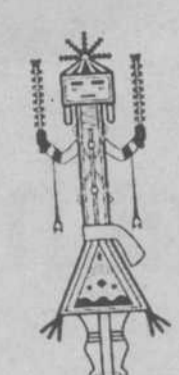
*Just A Touch*

- \* Male/Female
- \* Escorts
- \* Massage
- \* Dancers
- \* Other Specialties

**Serving Central Illinois**  
24 hours a day  
586-6041  
Master Card/Visa/Discover accepted  
We accept checks  
Call for employment opportunities



American Indian Cultural Society



Oct. 1  
12:30-1:30  
X150

After spending all day at the library...



Wouldn't it be nice to come home to swim & relax at Melrose!

Our 25-meter heated indoor swimming pool is a great way to relax or exercise after a long day in class. Picture yourself here, enjoying the Melrose experience. With your private bedroom/bathroom suite and individual lease you'll be excited to come home to

**Melrose**  
APARTMENTS  
"The Community of Choice!"  
1601 N. Lincoln Ave. 278•0278  
www.melrose.com

**Look What a Gift of \$25 A Month Can Get Your Kids These Days.**

Help your kids out with college, a first car, or a first home. With competitive interest rates, it's amazing what a gift of U.S. Savings Bonds can do for your kids.

Call toll free: 1-800-4US BOND.



www.savingsbonds.gov

**This kid's got a record!**  
his grades.

Pablo knew in a couple of years he would be ready for college. He also knew it would be tough to afford. He even thought about dealing drugs to pay for it. Fortunately for Pablo, two community policing officers took him under their wing. They steered him to counselors and programs that could help him pay for college. Now the only record he'll have is his grades.

**LESS CRIME IS NO ACCIDENT**  
It takes you — and programs that work.

Call 1-800-WE PREVENT, and we'll send you a free booklet on how you can support programs in your community that keep kids away from crime and crime away from kids.



1-800-WE PREVENT  
www.weprevent.org

Ad Council

TAKE A BITE OUT OF CRIME  
U.S. Department of Justice  
Crime Prevention Division of Research

**Round-up a great career opportunity!!**  
**NEW STORE OPENING**

*Texas Road House is looking to round-up some great employees!!*  
**NEW STORE OPENING!**  
All Positions Available

Why its great for all students?  
- No lunch shifts during week  
- Close early on school nights 10-10:30  
- Great pay  
- Fun Management - Like you have ever seen before  
- No term paper required

Apply in person 11-6 Monday-Saturday  
204 North Country Fair Drive  
Champaign, IL 61821  
Next to Custom Cuts  
Equal Opportunity Employer



**COUNTRY FAIR APARTMENTS**


MONEY SAVING RATES HEAT, WATER, GAS, SATELLITE TV, REFUSE, AND SEWAGE PAID

- Large 1 & 2 Bedroom
- Furnished or Unfurnished
- Frost-free GE refrigerator
- GE electric range w/ self-clean oven
- Lots of spacious closets
- Hassle-free laundry each bldg.
- 24-hour, on-site, management/maintenance service
- Pool, BBQ, tennis, basketball, and playgrounds
- Free lighted parking
- Walk to shopping, restaurants, and theater
- On MTD bus line
- Flexible lease terms
- One small pet welcome with deposit.

359-3713 • 2106 W. White, C  
Weekdays 9-5:30, Saturday 9-12  
No appointment necessary to view model apartment

Read the Latest Text-book...

**Is Your Printer COMPATIBLE?**



From color printing to desktop publishing, Insty-Prints does it all.

**INSTY-PRINTS**  
BUSINESS PRINTING SERVICES  
1001 N. Mattis  
Champaign, IL  
356-6166



## COBRA ACTION



# Golf team having successful season

By: BARBARA TORBECK  
PROSPECTUS STAFF WRITER

A successful season is within reach for the Parkland College golf team this year.

After four tournaments, the team has proved themselves to be in the top three.

At the Black Hawk Invitational on Sept. 2, the team placed second in against 11 schools with freshman Mike Greenwood placing first in the individual tournament.

At the Parkland Invitational on Sept. 10, they placed second out of 20 schools. Sophomore Mike Sebastiani also placed second individual-

ly.

On Sept. 12-13, the team placed second again at the John Logan Invitational with 15 schools competing.

Coach Greg Thom says that the season has been running smoothly. "We're extremely positive about our performance so far," he said. "We're very encouraged."

Thom says that the team has a lot of focused players that have kept up with golfing over the summer.

"We've got some real good players," he said. "They've played in tournaments this summer and have done real well in competitions."

This past week, Thom has had to split his team up because of class schedules.

Half of them competed in the DuPage Invitational on Mon. Sept. 21, placing sixth. The other half will compete this Fri. Sept. 25 at the Prairie State Invitational.

However, Thom will keep the team together for the ICC Invitational this weekend.

With the successful season, the golf team is looking forward to regionals. Thom says that the team has the ability to win the championship.

"This team has a lot of depth," he said. "On any given



day we've got 6 or 7 players that could win a tournament individually.

"Hopefully this team right now should have some confi-

dence because we have done well."

Regionals will take place next month in Springfield.

## Cross Country saves season

By: BARBARA TORBECK  
PROSPECTUS STAFF WRITER

The Parkland cross country teams are off and running to a slow start this year.

At the Eastern Illinois Invitational on Sat. Sept 19, the men's and women's teams finished seventh place out of eight schools.

While the team has been

disappointed with the results, it has not been for lack of effort.

"Lately we've been trying to concentrate on being a team," said team member Chad Streff. "If we can run as a team, we're going to run good times."

Futhermore, one of the key runners, Sarah Dietrich is out with an injury making the rest of the team cover for her.

Despite the hardships, the

team still has persevered and is hoping to place in the top five at Nationals in November.

Right now, the Cobras are looking ahead to the Danville Invitational on Sat. Sept. 26. There they hope to do better. "We're going to go after Danville and try to beat them," said Streff. "When a team does well, everybody feels better about themselves."

## To benefit Parkland Golfers raise \$1,200 in pledges

Sixteen golfers played 100 holes to raise \$1,200 in pledges in the Parkland Golfathon at the Brookhill Golf course in Rantoul last week.

Best scores were carded by Clark Peterson and Mike Tennant.

Peterson also had the longest drive. Longest putts were made by Mike Hagen and

Zach McNabney.

Becky Beach and Mark Morfey won closest to pin, and Jeff Butts won the closest second shot competition.

Jim Rossow, of the News-Gazette, played as well as Parkland alumni and staff.

Bill Anderson and Ray Smith were hosts at Brookhill.



### Prospectus: Sports Editor...Writers

to interview:  
players, coaches, fans  
and cover games,

**Paid hourly or by the inch!!**

Come to the *Prospectus*  
Office in X155 or call the  
office at 351-2216.

