

P



STAR WARS: SEE PAGE 3

rospectus

Student Government president charged

By STEPHANIE HODGE
PROSPECTUS EDITOR

Blessing Olu Omoniyi, president of Parkland Student Government, was arrested on campus and charged with battery Jan. 27.

Gwendolyn Wilson, Student Government vice president, is the alleged victim of the battery.

Omoniyi is scheduled to appear in Champaign Circuit Court on Feb. 20.

A person commits battery if he/she intentionally or knowingly without legal justification and by any means causes bodily harm to an individual or makes physical contact of an insulting or provoking nature with an individual.

Omoniyi has been president of Student Government since September. Before his election, he was a senior senator.

Student Government procedures include a periodic review of the performance of its officers and members. If their performance is not considered



Blessing Omoniyi



Gwendolyn Wilson

satisfactory, the review board may recommend removal from office and membership.

Fewer students, more hours 7,767 attending Spring classes

Fewer Parkland students are taking more credit hours this semester than during the Spring semester last year.

The total credit headcount — 7,767 — is down 4.7 percent from the Spring semester last year. However, the FTE (Full Time Equivalent based on 15 academic hours per student) is up .57 percent over last Spring.

Mike Henry, director, Admissions and Enrollment, said both the headcount and FTE at the end of the semester will look quite different. "Since we have a number of courses that begin at various times in the semester our enrollment is always changing until the end of the semester."

On the tenth day of the Fall semester, the credit headcount was 8,074, Henry said, but at the end of the semester, it was 8,739.

The College Press Service reports that college enrollments may be stabilizing for the first time in several years, according to

a recent report by the American Council on Education.

The ACE reports that only a handful of states reported enrollment declines this year — and those that did reported declines of 2 percent or less.

ACE surveyed 22 states to gather data on 1996 enrollment figures; 11 provided complete data.

According to ACE:

*Enrollment at community colleges appeared to be stable. Forty-seven percent of the states reported two-year enrollment data experienced declines, compared to 652 percent in 1995 and 78 percent in 1994.

*A community college's enrollments traditionally is closely linked to the economy, said David Pierce, president of the American Association of Community Colleges. When economic conditions are good, fewer people tend to enroll in postsecondary institutions to get job skills or retrain.

Pierce predicted community colleges would

experience a growth in enrollment in the next five to 10 years because of "the baby boom echo, increasing number of high school graduates and older employees returning to community colleges for workforce training."

*Private colleges reported greater enrollment declines than did public institutions; and part-time enrollment at both provide and public colleges dropped more than full-time enrollment.

Among the states that provided complete data, three — Maryland, New York, and Rhode Island — reported decreases in all sectors of higher education. Only Iowa showed an increase in all sectors.

The U.S. Department of Education is predicting a 14 percent increase in college enrollment nationwide over the next decade. However, this growth likely is to be concentrated in the South, Southwest and West. States in the Northeast and Midwest will experience only modest changes.

Assaults up 195%

Sheriff Madigan: need tougher juvenile law

By GENE WALAG
PROSPECTUS STAFF WRITER

Sheriff David Madigan says, "I don't like the Juvenile Court Act. Juveniles who commit crimes should be tried as adults. Juveniles know when they commit a crime they will not be tried as adults and get off with lighter sentences."

Madigan added, "Juvenile crime is increasing in the county because the Chicago gangs are moving in and actively recruiting juvenile members."

Madigan said some juveniles break the law because they know nothing much will happen to them.

He talked with Parkland Newswriting students at the County Jail last week.

Madigan said more women are entering the criminal system and the major offense is prostitution.

However, men constitute the majority of the jail population, and the major offenses for which they are committed are physical and

sexual assault.

In 1996, reported aggravated assaults in the county increased 195%, and aggravated battery increased 24%. One reason for the increase, Madigan said, "is because more people are using 911 which is very easy to use."

As sheriff, Madigan is responsible for the administration of the office, 163 employees, and two correctional centers.

The jail on Main Street in Urbana opened in August, 1980, and has 130 beds. The new \$10 million facility on Lehrman Avenue in Urbana has 136 beds and some of the latest surveillance equipment, Madigan said.

But "Jail is not the answer to community problems," Madigan said. "The answer is the teaching of values and responsibility."



Sheriff talks to students

Sheriff David Madigan talks to Parkland newswriting students about juvenile crime.

PC Police Reports

January 27

Officers were called to the Student Services Offices for a report of a battery that occurred in X-160. A suspect was identified and was arrested.

January 28

Officers were called to a possible hazardous material spill in a lab. Upon arrival the officers found that the spill had been a water leak from a sink. Two bottles of acid were removed from the sink. The acid was not involved with the incident.

January 29

Officers were called to the Library in reference to a theft of a bookbag. Officers searched the area and recovered the property. The owner had forgotten where the property had been left.

January 30

Officers were called to a fight in progress near X-147. Officers broke up the altercation and interviewed the involved parties. The case is being forwarded to the State's Attorney's Office for evaluation of possible charges.

Officers observed a male in the C-wing that was dressed as a female. The subject was identified and interviewed. It was determined that the person had been involved in an accident on 1/23/97 when he had entered a woman's restroom in the college center that was occupied. The person was removed from the campus.

January 31

Officers were called to the Admissions Office for a student that was upset. Officers talked with the individual and the issues were resolved.

Officers responded to M-6 parking lot for a theft report. The victim stated that the vehicle had been parked in the lot most of the day and was locked. When the victim returned to the vehicle the car was unlocked and a CD player had been removed. The estimated value of the CD player is \$500. This case is still under investigation by the Department of Public Safety.

Officers were called to the B-1 parking lot to take a hit and run report. This case is still under investigation by the Department of Public Safety.

...Letter to the editor...

By MARISA McDONALD

To the Editor:

It seems typical nowadays to be late for class. No, I am not sleeping in, forgetting to set my alarm or just running late. I'm in my car trying to get on campus, park my car, and walk through the parking lot and make it in to class.

I will admit getting onto campus is hard, but not near as difficult as trying to leave. Let me explain: it is not at all uncommon for traffic to be backed up past the Child Development Center for the Bradley entrance or backed up past the butterfly made out of flowers on Parkland Way. Something has to be done so that traffic will flow easier and faster for these situations.

Traffic lights are one solution. I understand that these will cost money, but it would be well worth the investment. These lights will allow for easier access both on and off campus. I think that one is especially needed for the Mattis/Parkland Way entrance. I've seen a car that had crashed into one of the houses

across the street! Now I haven't heard exactly what happened there, but the only thing that I can think of is that the person driving that car tried to make it across and was so worried about oncoming traffic that he/she forgot to turn!

I've witnessed many near misses due to the fact that people are so impatient to leave that they just pull out in front of people. The new motto for that intersection is "Don't pull out until you see the whites of their eyes or license plates, whichever comes first."

Maybe the timing can be adjusted between the Mattis/Paula and the Mattis/Bradley lights to allow a few cars to leave Parkland Way. It is very difficult to get one side clear and the other side reasonably clear in order to pull out and leave.

Another thing that gets me: at the Bradley entrance, the people who pull into the right hand lane and turn left to leave. Hello! Duh, it says right hand turn ONLY!

I've spoken with a few other Parkland students, and they suggested making another entrance. That would provide four different entrances on and off campus to choose from.

Now I know you are probably thinking just allow yourself more time to get to class. My answer: I do. I leave Thomasboro 45 minutes before classes are scheduled to start. It only takes 20 minutes, at the most to drive to Champaign, and then the last 25 minutes of that time is spent in traffic, parking the car, and walking into class.

Parkland College is a commuter college. Most students rely on a vehicle of some sort in order to get here, whether it be a car they drive or ride with someone or riding the bus. It seems to me that the easier way to get here would be to ride the bus. That way the driver can cuss traffic for me!

Marisa McDonald



"Doing Business in the European Union"

AMSTERDAM THE NETHERLANDS

**SUMMER STUDY ABROAD PROGRAM
JUNE 30-JULY 25, 1997**

Earn six semester credit hours

Two courses:
International Business
International Marketing

Course Related Excursions:

- Amsterdam Historical Museum/Diamond Factory
- Town Hall
- Dutch Central Bank
- IBM Headquarters
- European Union (Brussels)
- McDonalds Headquarters
- KLM/Northwest
- American Bank
- Rotterdam (World's largest port)

Cultural Related Excursions:

- Paris-three days, two nights
- Enkhuisen-small ancient Dutch village
- Efteling-The "Dutch Disneyland"
- Anne Frank house
- Rembrandt Exhibit
- Van Gogh Museum
- Museum of Modern Art

Cost: Approximately \$2223 plus meals, airfare, personal expenses, and home institution's tuition and fees.

For more information see the ICISP representative on your campus or contact: J. Robert Ulbrich,
PARKLAND COLLEGE
 2400 W. Bradley Ave., Champaign, IL 61821
 Telephone: 217/351-2393

Prospectus

Managing Editors:

Stephanie Hodge: Advertising Manager
Jacob Livengood: News Editor
Cory Gibson: Production Manager

Art Design & Layout Editor: Jeffery Dicke
On-Line Editor: Amarjeet Singh

Features Editor: Alex Lobel

Advertising Staff: Abby Franklin
Sara Taylor
Tricia Killian

Advisor: Doris Barr

News Office: 217 351-2216

Advertising: 351-2278

Fax: 373-3835

Online Address:

<http://www.parkland.cc.il.us/prospectus/>

Next Publication Date:

Wednesday, February 12, 1997

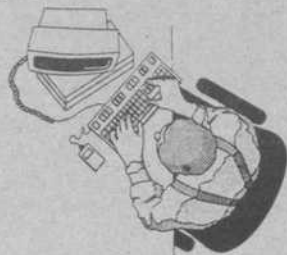
Ad Deadlines:

Noon, Monday, February 10, 1997

The Prospectus is published weekly during the fall and spring semesters, and monthly during the summer session by students of Parkland College, located at:

2400 West Bradley Avenue
Champaign, Illinois, 61821-1899.

Is Your Printer COMPATIBLE?



From color printing to desktop publishing, Insty-Prints does it all.

INSTY-PRINTS
BUSINESS PRINTING SERVICES

1001 N. Mattis
Champaign, IL
356-6166



* Not included shoes already on sale (not valid with any other discount)

367-3701
Urbana, IL 61801
108 W. Main

HOURS:
M-F 9-5
Sat. 9-4



exp 2/13/97

COUNTRY FAIR APARTMENTS

**MONEY SAVING RATES
HEAT, WATER, GAS,
SATELLITE TV,
REFUSE &
SEWAGE PAID**

- Large 1 & 2 Bedroom
 - Furnished or Unfurnished
 - Frost-free GE refrigerator
 - GE electric range w/ self-clean oven
 - Lots of spacious closets
 - Hassle-free laundry each bldg.
 - 24-hour, on-site, management/maintenance service
 - Pool, BBQ, tennis basketball, and playgrounds
 - Free lighted parking
 - Walk to shopping, restaurants, and theater
 - On MTD bus line
 - Flexible lease terms
 - One small pet welcome with deposit.
- 359-3713 • 2106 W. White, C
Weekdays 9-5:30, Saturday 9-12
No appointment necessary to view model apartment

Star Wars makes \$36 million over weekend Film revolutionized movie industry

BY MICHAEL WIEHER
PROSPECTUS STAFF WRITER

Lightsabers, star destroyers, protocol droids, and, of course, The Force.

We've all grown up with the ideas of good and evil ingrained in our minds from the *Star Wars* explosion. Explosion not only because the fire and debris from Alderon looked pretty cool, but because movies—especially special effects—were changed forever when *Star Wars* was created.

We all remember when Obi-Wan and Darth Vader went at it on the Death Star and the Death Star itself.

Up to that point in the movie industry, some of the most impressive special effects were seen in television shows like *Flash Gordon*—where the coup-de-grace of effects was painted-on laser blasts and costumed aliens that looked less believable than anything you could find at K-Mart.

But with the advent of *Star Wars*, George Lucas brought a whole new generation into the area of special effects. Most of his special effects people were under thirty, and they brought with them new

ideas, new goals, and most of all, more drive than ever before.

It would take weeks, sometimes months to stop-action film the flight of the Millennium Falcon or that of a single tie-fighter careening off into space. The choreography involved in any lightsaber battle was incredible—try prancing around imagining where your weapon would intersect with Darth's and remembering to hold it there just long enough to look real. Up to that point such effects were unimaginable or at least not practical.

While the special effects in *Star Wars* revolutionized the industry, the plot instead remained simple and classic—a technique storytellers have been using for centuries.

Lucas took some simple plots—good vs. bad, oppressors vs. oppressed, father vs. son—and combined them into a relatively simple piece of fiction. His genius came into play when he designed the characters—the aliens, the heroes and the enemies.

Could there be a more

hateable character than the Emperor? Old, disgusting, wrinkled, yellow-eyed; yet powerful and controlling.

In the trilogy, where Luke turns his father from the dark side... a classic and simple story, yet meaningful and powerful.

Yet as powerful and revolutionizing as *Star Wars* was, even it stood on the shoulders of giants.

Flash Gordon and a host of other sci-fi comic books, television programs, even movies had precipitated the advent of *Star Wars*, but they simply hadn't taken the genre to the explosion of popularity that *Star Wars* did.

So when you go see *Star Wars IV A New Hope* remember its history and appreciate what its done for entertainment ever since.

Many people did see *Star Wars* and its impact on the entertainment industry over the weekend. The film accumulating nearly \$36 million.

"It was insane," said Morgann Thomas, a Parkland Student and worker at Savoy 14. "We had to tell people to slow down while entering the theater."

May The Force be with you!

Star Wars: names from beyond the galaxy

BY COLLEEN DEBAISE
COLLEGE PRESS SERVICE



"Luke," invokes Darth Vader, in an ominously raspy voice. "I am your father!"

That was the sensational conclusion of "Return of the Jedi," the last installment of the "Star Wars" trilogy in which dizzying visuals left movie-goers feeling like they'd been hit by a dark star.

But would the trilogy, to be re-released Jan. 31 with digitally remastered effects, pack as much punch if Darth Vader had been named, say, "Jean-Luc"? Of if the lovely Princess Leia answered to the Greek-goddess-like "Xena"?

Filmmaker George Lucas recently told *The New York Times* just where on earth he came up with the catchy names that launched a thousand action figures.

As it turns out, names such as "Luke Skywalker" and "Hans Solo" did come from earth. Lucas said he borrowed from a mix of literary, cultural and linguistic sources to devise

the memorable names.

"I wanted to stay away from the kind of science fiction names like Zenon and Zorba," he told the *Times*. "They had to sound indigenous and have consistency between their names and their culture."

That's why he borrowed from he Dutch to come up with Darth Vader, which roughly translates into "Dark Father." Vader's original name is Anakin Skywalker—"Anakin" is a variation on the race of giants in *Genesis*, while "Skywalker" is a take on Loki, the Norse god of fire and mischief.

Luke Skywalker's name comes from he Greek word "leukos" or light. Also, the biblical Luke was a gentile who converted to Christianity and became an apostle. That seemed appropriate for the young man who discovers "The Force."

The name Han Solo stems from two sources: "Han" is the archaic pronunciation of the common boy's name, John, while "Solo" is borrowed from eh character Napoleon Solo in "The Man from U.N.C.L.E." A character named Napoleon Solo also appeared in the James

Bond novel. "Goldfinger."

Princess Leia's name evokes the character Princess Dejah Thoris in Edgar Rice Burroughs' "John Carter of Mars" tales, and also Lady Galadriel of Lothlorien in J.R.R. Tolkien's "Lord of the Rings." The braids that look like earmuffs are all hers, however.

The loveable robot R2-D2 got his name form a sound editor's shorthand for "Reel Two, Dialogue Two" during the making of another Lucas flick, "American Graffiti."

Obi-Wan Kenobi, the Jedi knight, got his name from the Japanese work "obi," which is a sash used to tie a kimono. The sash, or belt, is thought to be connected to Obi-Wan Kenobi's status as martial arts master.

Also, the desert scenes in "Star Films" were filmed in Tataouine, Tunisia. Luke's home planet, of course, is "Tatooine."

By the way, Lucas had a rambunctious pet dog named "Indiana," who later lent his name to the filmmaker's "Indiana Jones" series.

Student Voices

If you could be any Star Wars character, who would you be? Why?



Sadaf Azam

"Princess Leia, cause my boyfriend keeps on talking about her!"



Garenne Bigby

"Chewy, because I want to be a big harry beast."



Gigi Morley

"R2D2, for no reason except that he's better than the rest"



Josh Gorman

"Boba Fett, because he kicks ass. He has all of those neat-o weapons."



Fawaz Khan

"C-3 PO, because it is made of gold and I love gold."



Danielle F. LeFaivre

"Chewy, because he is so cute and cuddly."



Jason Melvin

"One of the Ewoks. I would be one because they live in trees."



Emily Munday

"Princess Leia, because she has really cool hair."



Indigenous culture in a contemporary coat

Eclectic Endeavors in Parkland Art Gallery

BY ALEXANDER LOBEL
FEATURES EDITOR

"Eclectic Endeavors," the current exhibit in the Parkland Art Gallery features selected works by seven women of Native American descent.

Gallery Director Denise Seif says the exhibit shows that indigenous American art today is "far more than blankets and beadwork. It addresses issues in a contemporary way, yet the artworks reflect their traditions."

Guest curator Louis Ballard says, "These artists have developed their personal vocabularies of visual topography, either drawing from their own particular tribal backgrounds or looking to their life experiences to evoke newer traditions of expression."

In Anita Fields' box-like triptych *Elements of Her Being*, the center piece shows someone with the traditional coat exchanged between friends. The side parts hold clay figurines, and six delicate, lit-

tle bundles of clay lie along the front.

Fields says, "Dresses, boxes, feminine figures, and windowed forms convey my attitude about being a Native American woman. They are about knowing who my ancestors are, where I come from, and how we communicate with ourselves and the world around us."

Emmi Whitehorse is Navaho by birth. Her art is oil on chalk on paper on canvas. In her studio she plies her hands through pigment, caressing, scratching, and staining the tightly stretched canvas. "These gestures are my life. I am this labor," Whitehorse says.

Lillian Pitt created the mask with feathers, *Cascade Spiderwoman*. In her sculptural work, she combines feathers, ceramic, shells, thread, wire and weathered wood. "My aim is to heal the things of this wounded planet by creating a consciousness of the need of healing and a sense of the transformative magic in ordinary things and beings," says Pitt. "At times I cele-

brate the ancient stories of my Warm Springs, Wasco, and Wisham ancestors in the imagery I create."

Anna B. Mitchell is a self-employed Cherokee potter. She began to work with clay in 1969 and through trial and error, she learned how to process the materials, to work with raw clay slips for coloration, and how to fire outdoors to obtain a traditional piece of work.

Mitchell describes her creations as "revolving around symbolisms in relationship to philosophy and life which surrounds my ancestors, the Eastern Woodland potters."

Wendy Mahsetky-Poolaw's tribe is Kickapoo-Comanche. Her eight monochrome oil paintings, *War Clouds Rise Upwards* connect with the traditional wind spirits of the Plains Indians.

Mahsetky-Poolaw says, "My identity transcends matters of artistic style, education, class, or race. I am simply trying to examine my experiences in a society that is constantly on the move."

Annette S. Lee's tribe is Dakota Sioux. An artist, she sees herself as a "visual reporter." Her oil on canvas *A Room With a View* has a vast horizon and contains part of her inner world. Lee says, "I am painting my autobiography, the most joyful, most painful experiences, my first memory, spirit dreams, and animal encounters."

Melanie Printup Hope is of Tuscarora descent. In her three works in the exhibit she has combined traditional beadwork with contemporary computer imaging. She says, "I use my own artistic expression to share with the viewer the story of where my ancestors began, and the instructions of how we must lead our lives: maintaining balance, living in peace with everyone around us, respecting and loving nature and all the living things."

The exhibit will be open until Feb. 14. The Gallery is open Monday through Friday from 10 a.m. to 3 p.m., Monday through Thursday from 6 to 8 p.m., and Saturday from 10 a.m. to noon.

MCI offers Parkland internet service

BY ROBERT DAVIS
PROSPECTUS STAFF WRITER

MCI in coordination with Parkland has established an internet access point available to students.

Students owning their own computers will be able to access the world wide web, send and receive e-mail, or use the vast resources of the net to enhance their studies.

The software associated with MCI's Parkland Net is the Microsoft Internet Explorer, and Eudora Lite, a utility much like Netscape Navigator and e-mail program.

Currently MCI does not have a package that offers unlimited access to the net. So if you decide to buy this access, be sure to limit your time to seventy five hours per month.

MCI does offer what they call "free hours," which are the hours from 1 a.m. to 6 a.m. nightly.

Another downfall is that at the moment MCI does not have the hardware to run at 33.6 kb/s—their net runs at 28.8 kb/s. Their competition, AOL and CompuServe, offer baud rates of 33.6 and if you have the new 2x technology that can produce rates of 51 kb/s.

Because MCI is new to the internet access business, they are a little behind the times.

For example, their competition offers flexible pricing programs that offer unlimited access for about \$19.95 a month, only five dollars a month more.

They also don't have a substantial number of servers to provide the quality of service that their competition can.

The lack of local servers could cause users to pay for long distance charges as you connect to their server, or worse yet, this may cause substantial lag while on the net, or may prevent you from accessing the net during peak

hours. MCI does not have the space to allow their users to create their own web pages—another downfall of this package. If designing your own web sight is your desire, you should select another service.

FEBRUARY, 1997

THE PARKLAND CHANNEL
Time Warner Cable of C-U, Channel 9
Heartland Wireless Cable, Channel 50

WEDNESDAY, FEB. 5

9AM-3PM	TELECOURSES
6:00PM	Founders' Wall Dedication and 30th Birthday Celebration
6:37PM	Beginning of Excellence
7:00PM	The Court System Today
8:00PM	The Community
8:30PM	Businesses
9:00PM	Education
9:30PM	The Arts

THURSDAY, FEB. 6

9AM-4PM	TELECOURSES
---------	-------------

SATURDAY, FEB. 8

8AM-9PM	TELECOURSES
---------	-------------

SUNDAY, FEB. 9

6:00PM	Crossroads Cafe, "Lost & Found"
6:30PM	"Time is Money"
7:00PM	"Fish Out of Water"
7:30PM	"Family Matters"
8:00PM	Live & Learn: Reach for the Stars
9:00PM	Parkland Community Forum Teens in Action

MONDAY, FEB. 10

9AM-3PM	TELECOURSES
6:00PM	The Parkland Challenge Urbana v. Gibson City Melvin Sibley
6:30PM	Oakwood v. Blue Ridge
7:00PM	Goals 2000: New American High Schools; Preparing Youth for College And Careers
8:00PM	Parkland Community Forum Children and the Courts
8:59PM	African-American Women in the Civil Rights Movement

TUESDAY, FEB. 11

9AM-4PM	TELECOURSES
6:00PM	Spanish TV Magazine Program Eight
7:00PM	Prisma: Land, Art, & Land Art
8:00PM	Germany Live: Leipzig, German with no subtitles
9:00PM	Leipzig, English version
9:30PM	German Scene: Eight features, in English

Say It Big

Happy Valentines Day!
Parkland Students

Elaborate balloon bouquet with flower centerpiece. It's absolutely beautiful! **\$10⁹⁵ ONLY**

Centered flowers by the dozen. **\$8⁰⁰**

"If your willing to pick it up, we're willing to give you the deal."

Say It Big **344-8052** to place an order

Say It Big

You have
to
Complete*
to really
Compete!



*Complete your Accelerated BACHELOR'S DEGREE!

Face it...without a Bachelor's Degree you don't have much of a Career Ladder to climb! If you want that promotion...that new job at the next level...a Bachelor's Degree can make the difference. According to the U.S. Census Bureau, the estimated lifetime earnings of a person with a Bachelor's Degree is over \$800,000 more than a person with just a High School Diploma. So why wait any longer? Start building your career ladder now!

3101 Montvale Drive, Springfield, IL 62704
(800) 445-7271 • (217) 793-2500

180 N. LaSalle Street, Chicago, IL 60601
(800) 225-1520 • (312) 836-4608

www.rmccil.edu

Day or Evening Classes Available * Ask about our Scholarships for Transfer Students

ROBERT MORRIS COLLEGE

NCA Accredited

Black Repertory brings education, entertainment to PC

BY AMY PEARSON
PROSPECTUS STAFF WRITER

In honor of black history month, the St. Louis Black Repertory Company will be performing Friday, Feb. 7 at noon in Parkland's theater.

The performance will bring to vivid life some of the verses which show how poetry can be spoken, sung, and danced, according to Parkland's Activities and Services Board.

Isabelle Castro, director

ry of the ASB, has previously worked with the company and describes their performance as a "new theatre experience that is very entertaining with very strong educational qualities."

Castro says it will give students the opportunity to learn more about African American changes throughout history. She is hoping to make the company's performance a tradition at Parkland.

The St. Louis Black

Repertory Company, founded by Ron Himes and established in 1976, has been recognized locally, regionally, and nationally for excellence in the theatre arts.

The company is comprised of recent college graduates and theatre students. Their goal is to provide "quality performances and dramatic instruction to young people, cultivating future audiences through early exposure."

Petition to graduate coming soon

Now that the Spring Semester is in full swing, it's time to worry about future planning and graduation.

There are two very important dates in planning for the commencement.

March 7 is the deadline to petition to graduate this spring if the student wishes to participate in Commencement exercises on Friday, May 16.

April 4 is the deadline for those not wishing to participate in the Commencement exercises.


Pregnant?
We're here to help!

We offer free pregnancy tests, counseling, information and caring support for as long as you need us.
Drop in or call us at

(217) 351-7744 or 1-800-550-4900
free, nonjudgmental, and confidential!

Hours: Mon. - Sat. 10 a.m. - 1 p.m.
110 1/2 N. Neil, Champaign

Get the Facts before you choose!



CONFIDENTIAL • SAFE • LEGAL

PREGNANT?
ULTRA SOUND SERVICES
PREGNANCY TERMINATION

1-800-692-3424
TOLL FREE

NITROUS OXIDE
GAS ANALGESIA



AFFILIATED WOMEN'S
SERVICES, INC.
INDIANAPOLIS

Immortalize your Valentine's name in print.

Advertise with the Prospectus.
Call:
351-2216
or
Room X-155

Do you have any ideas for newspaper stories? Come join us at the Prospectus.
Call us at
351-2216
or
visit us in
Room X-155.

If you're into computer science, data processing, accounting, auditing, math or law...



COMPUTER SCIENCE

DATA PROCESSING

LAW

Accounting

AUDITING

STATE FARM INSURANCE

Math


get in touch with State Farm.

Our career opportunities are many and varied for qualified grads. If you're selected, you'll enjoy the advantages of working with a respected leader in the insurance industry. Expert training. State-of-the-art equipment. Excellent pay and benefits. Plenty of room to grow. And you'll enjoy Bloomington, Illinois, too. It's a thriving community with the social, cultural and recreational activities afforded by two universities.

Contact your Placement Director, or write to: Assistant Director Corporate Human Resources, Three State Farm Plaza-K1, Bloomington, Illinois 61791-0001.



Join The Team!!

Earn The Money You Need at ARBY'S & DADDY-O'S



Competitive starting wage-- full- or part-time at Arby's or Daddy-O's in Champaign and Urbana. Open and closing shifts available for days, nights and including weekends. We offer training, flexible hours and FREE MEALS! A comprehensive training program gives you the opportunity to earn several raises in the first few months.

Apply in person during business hours at either of these locations.

1913 W. Springfield Ave., Champaign
711 S. Sixth, Champaign
1502 N. Prospect, Champaign
509 N. Cunningham Ave., Urbana

2010 W. Springfield, Champaign
1212 N. Prospect, Champaign
504 W. University Ave., Urbana
2711 N. Vermillion, Danville

C R O S S W O R D

ACROSS

- 1. Engrossed
- 5. Bette or Jefferson
- 10. Service branch: abbr.
- 14. Nonpareil
- 15. "All in the Family" name
- 16. Entreaty
- 17. English queen
- 18. "—porridge hot..."
- 19. City in Georgia
- 20. Direct
- 22. Atomic particle
- 24. Green nut
- 27. Suave
- 30. Safe places
- 34. Damp
- 35. Frighten
- 36. Kindled
- 37. "No ifs, ands, or —"
- 38. Pay out
- 39. In one's right mind
- 40. Dir. letters
- 41. Swoon
- 42. Thickheaded
- 43. Closed again
- 45. Easy to chew

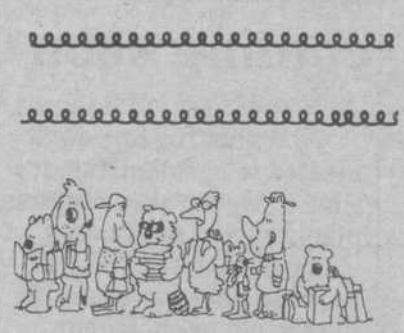
DOWN

- 46. Stressful situations
- 48. Kayaks
- 51. Pudding variety
- 55. — the Red
- 56. Crazed
- 59. High-fiber food
- 60. Engrave
- 61. Author Zola
- 62. Fat
- 63. Understands
- 64. Backs of necks
- 65. Fitzgerald or Logan
- 1. Certain horse
- 2. — Domini
- 3. Actor Sean
- 4. Cross the line
- 5. Oust
- 6. Able
- 7. By way of
- 8. Common contraction
- 9. Animal tender
- 10. Remove
- 11. Narrow opening
- 12. Office communication
- 13. City in France
- 21. Color

- 23. Make angry
- 25. Travels upward
- 26. Sing a certain way
- 27. Brown pigment
- 29. Takes the bait
- 31. Antelope
- 32. Wash cycle
- 33. Direct
- 35. Undercover agents
- 38. Department store employees
- 39. Logical
- 41. Charge for riding
- 42. Profound
- 44. Eras
- 45. Vestiges
- 47. Serviceable
- 48. Letters
- 49. Funny Johnson
- 50. Pleasant
- 52. Spoken
- 53. Sandburg or Sagan
- 54. Time — half
- 57. "I — Camera"
- 58. Small drink

Answers on page 7

1	2	3	4		5	6	7	8	9		10	11	12	13
14					15						16			
17					18						19			
20				21					22	23				
			24				25	26						
27	28	29					30					31	32	33
34							35						36	
37							38					39		
40					41						42			
43			44						45					
			46					47						
48	49	50							51			52	53	54
55							56	57	58			59		
60							61					62		
63							64					65		



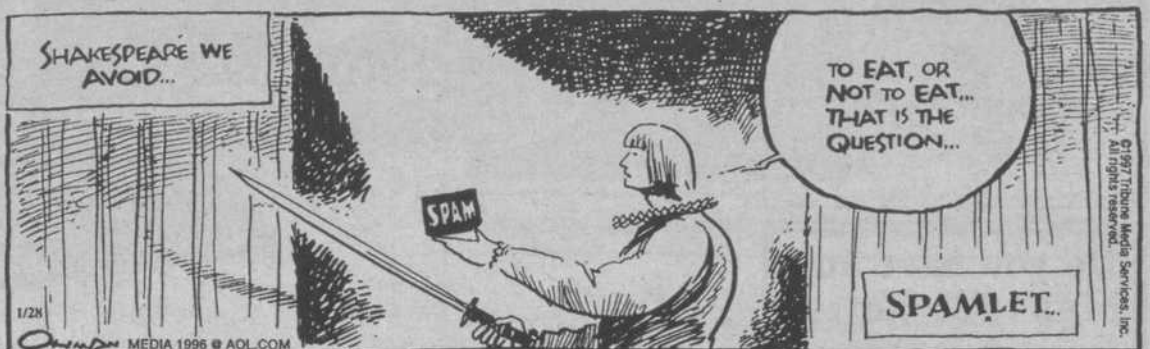
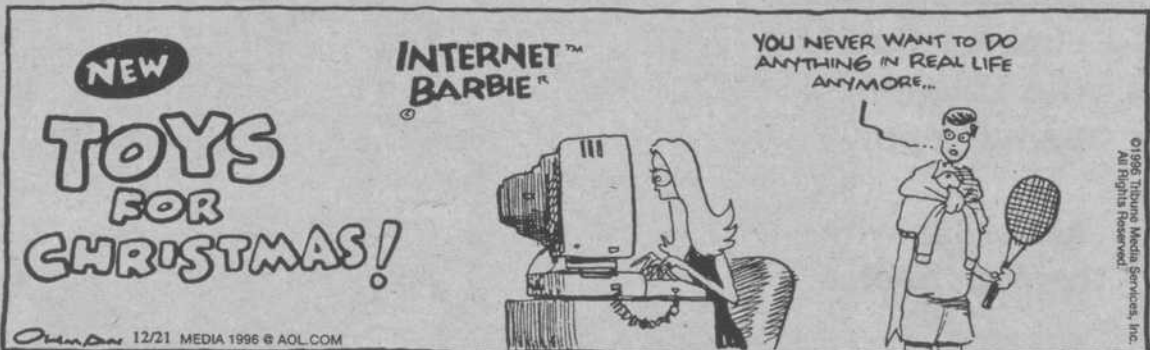
off the mark

by Mark Parisi



MIXED MEDIA

by Jack Ohman



Lady Cobras Strike in Invite

By NICHOLAS TRAXLER
PROSPECTUS SPORTS WRITER

The Parkland Women's basketball squad opened play in February with three wins in two days to capture their own tournament for the 2nd year in a row.

Playing two games on Saturday, the Lady Cobras gutted out victories against John Wood and Shawnee Community Colleges.

In the first game, sophomore Stephanie Poshard led the charge with 16 points as the squad outscored John Wood 58-48.

Versus Shawnee, the Lady Cobras stumbled out of the blocks, but with Dane Anne Massey and Niki Cutchin providing the team high scoring punch (15pts apiece) they proved too much for Shawnee and cruised to an 88-58 blowout of their southern rivals.

Following Saturday's impressive performances Parkland stepped on to the floor Sunday afternoon playing for the tourney title against 14-8 Malcolm X Comm. College.

After trailing early, the Lady Cobras pulled ahead and finished the half with a comfortable 10 point lead.

Although Malcolm X pressed the entire game, the Lady Cobras handled it well enough and bruised their opponents in the paint with an excellent half court attack.

When the women weren't scoring on back-door layups they were going to the free throw line where they connected on 16 of 22 foul shots. This proved to be the difference in the game as the visitors shot a lowly 15 of 33 from the charity stripe and a just 23% from the field. The great defensive effort paid off with the Lady Cobras 61-45 victory and the Park-

land Lady Invitational trophy.

Beth Winter led all scorers with 18 points after missing the second half of the Shawnee game with a sprained ankle in a gutsy performance also contributing eight rebounds as well.

Sophomore Ruth Hawthorne led the squad in assists (5). The team also tallied 10 steals.

Niki Cutchin and Toshia Smith garnering All-Tourney awards. Smith also captured the Tourney MVP trophy for her outstanding 3 game output.

All in all the Lady Cobras represented Parkland well and deserve our support heading into the final month of the season prior to March Madness. Game schedules can be picked up in the P building or contact Coach Argie Johnson in P112 for more info.



Five, six, seven, eight...

U of I dance team performed at Parkland's men's basketball game last Thursday.

Photo by Stephanie Hodge

Cobra Action

Men's Basketball
2/6 7:30pm vs.
Spoon River in Canton

2/8 7:00pm vs.
Lincoln Land in Springfield

Women's Basketball
2/6 5:30pm vs.
Spoon River in Canton

2/8 5:00pm vs.
Lincoln Land in Springfield

2/11 5:30pm vs.
Lewis & Clark at Parkland

Support the Cobras!!

Cobras take tough loss to Il Central

By STEVEN WEST
PROSPECTUS SPORTS WRITER

The men's basketball team took another tough loss - 92 - 84 - to the Illinois Central Cougars Thursday night.

The Cobras (10-8) trying to break a two-game losing streak, came out with sluggish defense against the 14-6 Illinois Central Cougars. Good offense by the Cobras kept them in the game, and they never trailed by more than ten points.

The Cobras had several problems during the game with turnovers and free throws. The Cougars and the Cobras turnover ratio were even all night, but the Cobras just couldn't seem to capitalize on Cougar mistakes. The Cobras kept playing good offense, and shortly before the half, Antonio Reynolds and Mike Griffith brought the team within 1. The Cougars then scored again on a technical foul, and the teams went in at the half with the score of 50 for the Cougars and 44 for the Cobras.

The Cobras came out

hot the second half with a beautiful shot from behind the arc and defense that looked like that of a team that meant business. The Cougars came back playing very well from behind the arc, and it seemed that the Cobras were playing catch up the rest of the night.

The game moved at a very fast pace as the Cobras raced against the clock to try and put away the Cougars. Once again, though, turnovers killed the Cobras' offensive drives.

Team captain Turhon Watson rallied his team for one more gallant effort, and with 15 minutes left, the Cobras tied the game at 62-62.

The Cougars answered the Cobras rally with devastating effectiveness from behind the arc. Once again the Cobras were forced to play catch up, and with the clock running out of time, the Cobras had to score fast.

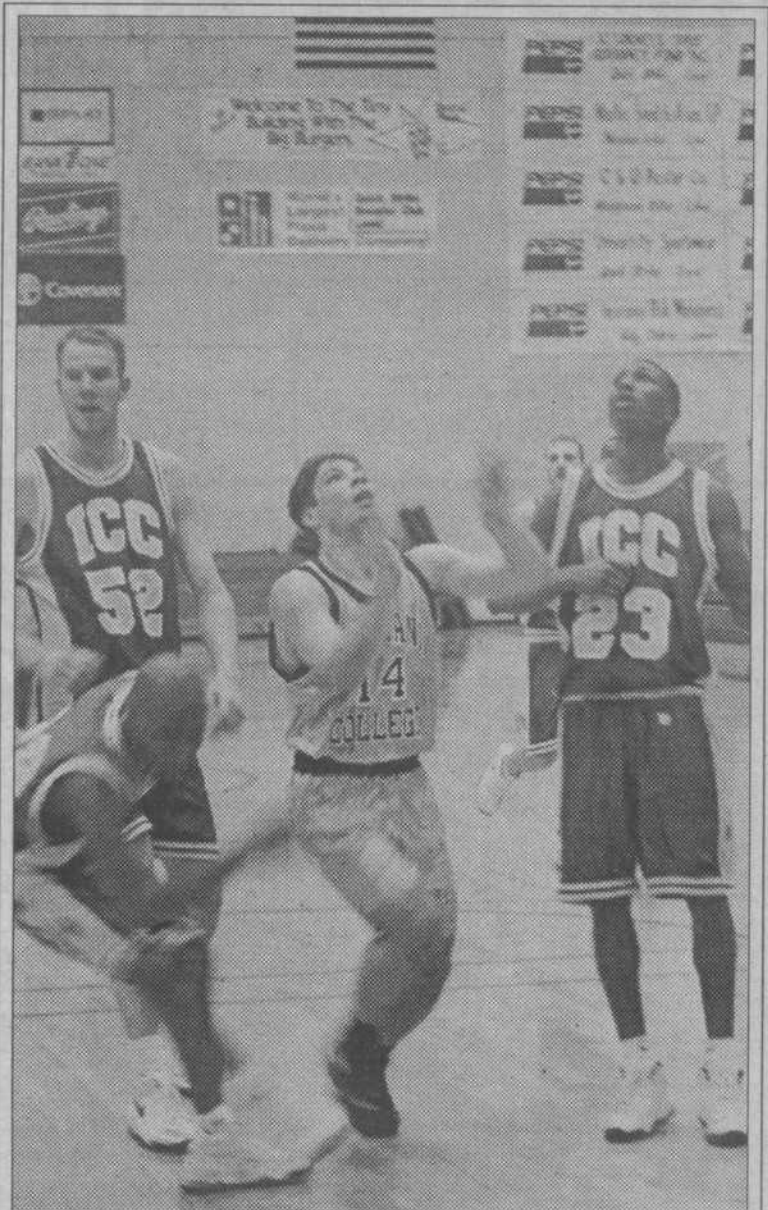
The Cobras gave it one more great team effort, bringing the game within 8, but the clock ran out, and the Cobras fell to the

Cougars.

After the game, Cobras Captain Turhon Watson had no excuses for the team's loss. Watson seemed to lay the blame of the loss on the team's inability to get focused. Watson feels that they needed to focus more together and bring up the energy level another notch to get them back on the winning road.

Head Coach Al Nudo said he was "very proud of his team and that everyone played with heart." Coach Nudo felt that the team needed to work on a couple of areas such as half court defense rebounding and free throws. The only other area that Coach Nudo emphasized was that the team needed to play smarter and not commit so many turnovers. All in all, he felt that his team had played very hard.

The Cobras gave a gallant effort, but just came up a little short. The Cobras will try to get back on the winning road this Saturday (Feb. 8) against Springfield College at Springfield.



The sky is falling

Parkland's Nick Traxler waits for the rebound in Thursday's game against Illinois Central.

Photo By Stephanie Hodge