

**International Talent Show**

See page 6 and 7



*Happy Thanksgiving*



**Golfer heads to national Volleyball Cobras go to regionals**

See sports page 9

*Cobras*

# Prospectus

Volume 27 Issue 8

Parkland College Student Newspaper

Wednesday, Nov. 10, 1993



Photo by Jimmy Fishbein

**New Drivers License Center**

Neighbors are concerned about increased traffic and noise associated with the new Drivers License Center being completed across from the Bradley Avenue entrance to Parkland.

**Across from Parkland entrance  
License facility set to open**

By Jennifer Polson  
Prospectus Staff Writer

The Drivers License Examination Station being built across from Parkland's Bradley Avenue entrance is set to open Dec. 1 despite a resolution opposing it that was passed unanimously by the Legislature and hundreds of signatures on a petition presented to the secretary of state.

Laurel Prussing (D-Urbana), who presented the resolution Oct. 26, said the

state is paying a third more for rent for the new location than for the old one on Bloomington Road.

The property is owned by a Champaign National Bank land trust.

Denese Hucal, former PC student who lives in the Parkland Ridge subdivision, reports that the driver's license facility has an average of 163 transactions a day. Transactions are any type of vehicular testing.

Hucal said the possibility of declining property values, noise pollution, an increase

in crime, and safety are the main concerns of Neighbors for Parkland Ridge.

"We feel that with Parkland already being at the intersection, we have a great deal of traffic. Add another 163 to that.

"Property values could decline. Each neighborhood has a reputation. We feel that we have a highly residential, low-traffic neighborhood. We have a few businesses in the area that do not really have a great deal of traffic like this facility

continued on page 5

**Parkland receives Excellence award**

Parkland has been awarded an Award for Excellence in Teaching and Learning by the Illinois Community College Board.

The College is one of three community colleges in Illinois to receive the honor. Programs throughout the state were judged on the basis of originality, impact on student learning, use by faculty and staff, commitment of the college, and potential for duplication.

Parkland received the award for its Center for Excellence in Teaching and Learning, which is directed by Luella M. Snyder, professor of Psychology at

Parkland, and an advisory board. Parkland's Center helps faculty develop through mentoring and evaluation. All new Parkland faculty are oriented to the College and mentored by a peer who has been trained through the Center for Excellence.

The award is the third Parkland has received from the Illinois Community College Board this year. Earlier, Parkland received state recognition for its strategic and operational planning and for its promotion of Illinois community colleges on a national, state, and local level.

**CAP pilot starts next semester**

A pilot project to test and evaluate the new Comprehensive Assessment Program (CAP) will begin Nov. 29, open registration date for students planning to enroll in Spring semester classes.

Students will be advised to take the placement tests and enroll in the classes which the results indicate are suitable for them.

The most widely needed

skill for success in college is reading, according to faculty who have researched and designed the Parkland CAP program.

They point out that all courses, including mathematics courses, use textbooks and other materials that are written for college-level readers.

The next most needed college skill is writing, faculty say, and the third is mathematics.

Because reading is the key to other skills, entering students will be asked to supply evidence of their reading level before signing up for classes. The level determines the courses they are eligible to take.

Students reading at the college level may take any course as long as they meet the course prerequisites.

Students who are not reading at the college level will have fewer choices and may take only courses recommended or approved for their reading level. As they raise their reading level, they may take higher-level courses.

continued on page 5

**Three trustees elected to Parkland Board**

Wayne Busboom, rural Urbana; Paul Quinlan, of Champaign, and John S. Albin, incumbent, of Newman were elected to the Parkland Board of Trustees on Nov. 2.

Busboom led in vote getting with a total of 13,574. Quinlan received 11,228 votes, and Albin, 11,064.

Twelve counties comprise the Parkland district. The vote totals were those of Nov. 4.

The new members were sworn in as members of the on Nov. 8.



Wayne Busboom



Paul Quinlan



John Albin

## News Briefs

### Homeowners seminar

Parkland and seven area banks will sponsor the Home Buyer's Seminar from 7 to 9:30 p.m. Nov. 11 in L111.

Business Series III: Managing Strategies for Building an Effective Business will be offered from Nov. 10 through Dec. 8 from 6:30 to 9:30 p.m. in L244. Topics will include management styles, hiring and firing, team building and communication, and business law and government regulation.

There are fees for the seminars. For more information: 217/351-2414

### Bial to speak on Amish

Ray Bial, director of the Parkland Library and author of a book of photography about the Amish, will present Amish Home — A Photo Essay at a meeting of the Lifelong Learners at 1:30 p.m. Nov. 16 at the Champaign Library.

There is a fee for the lecture. For more information: 217/351-2544

### Career Planning Seminar

An "Introductory Career Planning Seminar" will be offered at 6 p.m. Nov. 16. Participants should meet at the Information and Welcome Center desk in the College Center.

Each individual will explore the career development process as well as the person's interests, abilities, values, and goals. Available career development resources also will be discussed.

There is no charge for the two-hour program, but reservations are requested. For more information: 217/351-2536

### Trauma workshop

Mary Beth Myers, R.N., M.S., trauma coordinator at Carle Trauma Services, will present "Dealing with Major Trauma," part of the "In the Workplace" series, on Nov. 20 from 8 a.m. to 5:30 p.m. in C 118.

Continuing education credits will be available for EMTs and registered nurses through the Illinois Nurses Association.

There is a charge for the workshop. For more information: 217/351-2292

### Exporting session

Seven area institutions will co-sponsor a workshop from 7:30 to 10:30 p.m. Nov. 16 for small businesses whose managements are interested in becoming involved in exporting.

Richard L. Egers, international business development manager with Illinois Power, will speak at the workshop in the Radisson Suite Hotel, Champaign. Case study presentations will be given by Roger Luman, Bradley University International Trade Center, Prem Chawla, Wolfram Research Inc., and Earl Jacobsen, Central Data Corporation.

The workshop is co-sponsored by Parkland, Illinois Power, Champaign County Chamber of Commerce, Central Illinois Exporters' Association, University of Illinois Center for International Business Education and Research, the Laurasian Institute, and the Urbana-Champaign Economic Development Corporation.

There is a registration fee. For more information: 351-2414

## PC surplus auction set for Nov. 13

Hundreds of surplus items from most departments of the College will be sold at an auction on Nov. 13, beginning at 11 a.m.

The auction will be conducted by the Don Seten Auction Co., Mahomet.

The sale will take place at Bondville Storage, five miles west of Champaign on Route 10.

Among the sale items are electronic pieces and parts, computer equipment, office goods, medical equipment, audio-visual aids, building maintenance materials, parking lot and walkway light poles and fixtures, and numerous other items.

## 7 short-term classes start Nov. 29

Seven afternoon courses that can be completed in three weeks will begin Nov. 29 and continue through Dec. 17.

The classes will meet Monday through Friday from 2 to 5 p.m.

Classes to be offered are: Introduction to Business, Microcomputer Word Processing, Strategy for Success, Logic/Critical Thinking, Human Sexuality, Introduction to Sociology, and Introduction to Speech Communication.

For more information: 217/351-2208

### Oops —

The last issue inadvertently reported 8-week intercession classes; they are to be 3-week classes.

## Gunji is named Foundation director

Ken Gunji, of Monticello, has been named director of the Parkland Foundation, which will be reorganized and reduced in size from 21 members to seven directors.

The Foundation is responsible for securing and administering private funds contributed to the College. The new organization of the board will take effect next summer.

Gunji, who has served as director of cooperative educa-

tion at Parkland since 1988, joined Parkland in 1970 as coordinator of financial aid and placement. A graduate of the U. of I. with a bachelor's degree in personnel management and a master's in recreation, he also worked at UI for eight years as assistant director of student financial aid, assistant program director of the Illini Union, and as housing administrator. He served in the U.S. Army from 1960-62.

## Jones to discuss conflict resolution

Dr. David Jones, chair of the Department of Fine and Applied Arts, will present a two-part workshop on Conflict Resolution from 1:15 to 4:15 p.m. Nov. 16 and 23 in the Myra Thompson School, Rantoul.

There is a fee for the presentation.

A Parkland Sampler will be offered from 6 to 7 p.m. Nov. 17. Information on credit and non-credit classes and workshops will be given and questions answered concerning how to return to school and plan a

class schedule.

A free health information lecture is scheduled for noon to 1 p.m. Nov. 18 when Regina Galer-Unti, health educator, will discuss "The Care and Feeding of Your Body."

Garland Graves, Parkland Lifelong Learners instructor in music, will present "Songs and Stories of Midwest Railroading" from noon to 1 p.m. Nov. 19 at the Rantoul Recreation Department, 520 E. Wabash.

For more information: 217/893-1240

The Parkland Camerata

Sandra Chabot, conductor  
presents

## To Music and Cecilia

featuring

Hymn to St. Cecilia, Britten

Serenade to Music, Vaughan Williams

Sunday, November 14, 1993, 4 p.m.

St. Patrick's Church • 708 West Main Street • Urbana, Illinois  
\$5 General Admission • \$3 Students/Seniors



Parkland College

2400 West Bradley Avenue • Champaign, Illinois 61821-1899

## Prospectus

The *Prospectus* is published by students of Parkland College, 2400 W. Bradley Ave. Champaign, IL 61821-1899. Opinions expressed in editorials, letters to the editor, and unsolicited manuscripts are not necessarily those of the *Prospectus* or of Parkland College. Editorial offices are located in Room X-155. Phone numbers are 217/351-2216 and 351-2278. Advertising rates are available upon request. The *Prospectus* is distributed on the Parkland campus and throughout Champaign, Rantoul, Urbana, and high schools in District 505. The *Prospectus* is printed on 100 percent recycled newsprint, and has been designed as a Model Community Newspaper.

Editor, Susan Herrel  
Asst. Editor, Tina Henderson  
News Editor, Carol Lombardi  
Photo Editor, Tina Henderson  
Sports Editor, Alden Loury  
Photo Asst., Marci Eichelberger  
Advertising Mgr., Cari Calentine  
Advertising Reps, Kelly McCullough, Kari Fiala, Robb Walters, Jennifer Pritchett, & Lisa Fontana  
Production Mgr. (Ads), Randy Williams  
Production Staff, Anita Worley, Ellen Whitlock  
Circulation Mgr., Jennifer Polson  
Circulation Asst., Jayson Oskard  
Business Mgr., Susan Coontz  
Faculty Advisor, Doris Barr

Publication Dates / Deadlines

Publication Date:  
Wednesday,  
Nov. 24, 1993

Advertising and Editorial Deadlines:  
Noon,  
Wednesday,  
Nov. 24, 1993

Staff Meetings:  
Every Tuesday  
at Noon  
in room X-155

## What can you expect from Bank One?

### COMPLETE BANKING SERVICES

- Loans: Real Estate Home Equity
  - Checking Accounts
  - Business Accounts
  - Investments
  - Trust Services
  - The One Phone®
- 24-Hour Customer Account Information  
351-1638
- Eight Banking Centers to Serve You Complete Teller Service 7 a.m. - Midnight, 7 Days a Week at Our Country Fair Location
  - For More Information, Call 351-1600

Whatever it takes.

BANK ONE

**BANK ONE**

Whatever it takes.™

Member FDIC



*"If you had two extra hours in the day, what would you use them for?"*



**Lynette Walton**

"I would use the extra hours to work on a research paper that's due in three weeks."



**Anne Roesch**

"I would ride my horse more."



**Shawn Leischner**

"Sleep."



**Dion Dandridge**

"I would use them to relax and sleep."



**Sharada Greene**

"If I had two extra hours in the day, I would devote them to complete circuit tutor and pspice problems for my linear circuit analysis course."



**Edie Bechtold**

"This week, I could use a lot more than 2 extra hours per day. I have a major test on Monday and need all the extra study time I can get. But I can always use extra time for housework and laundry. It seems like I never can get to it."

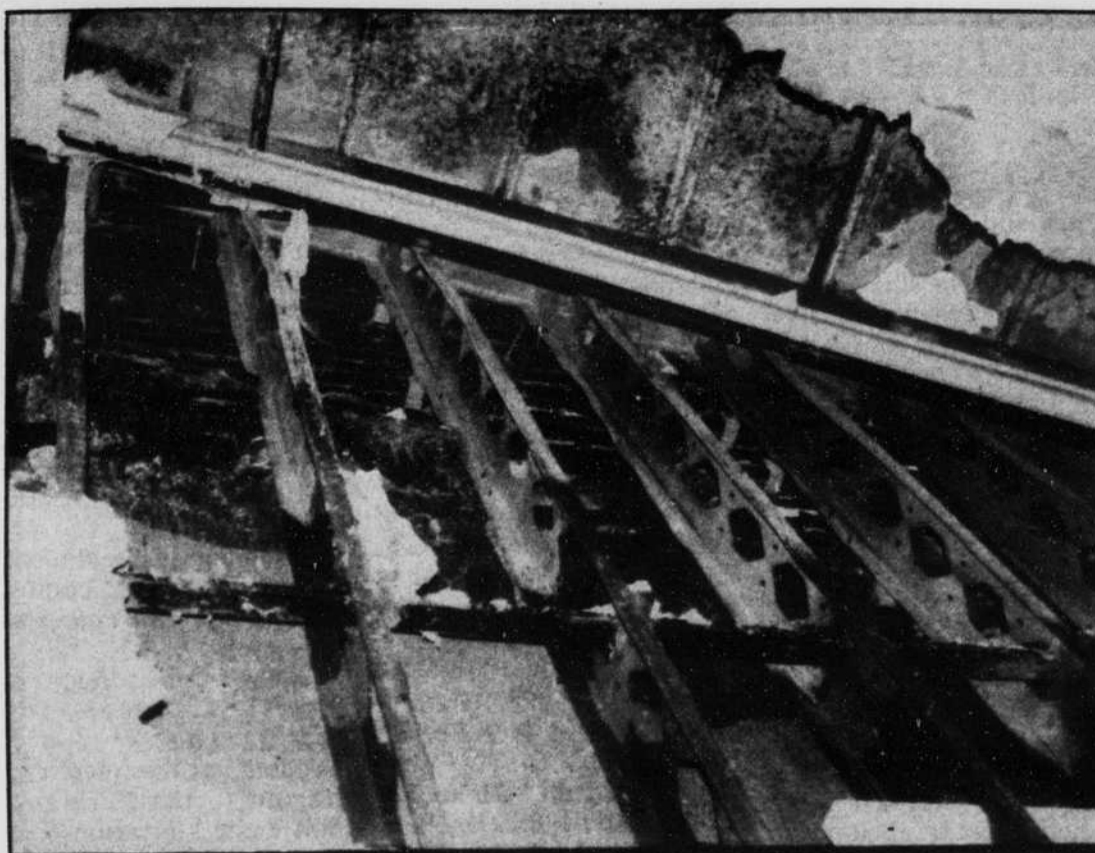


Photo by Tina Henderson

### Clean up continues

Construction workers tore off dry wall in the library to determine the amount of damage from the Oct. 25 fire. Pictured here is the third floor library wall where the firefighters opened the wall to knock down the fire.

## Minority myth discussed

By Carol Lombardi  
News Editor

How people, especially women, who have been brought up in the Chinese tradition often are exploited was discussed at a Brown Bag meeting on Oct. 28.

Helen Chen, director of Institutional Research, discussed *Revelations on the Model Minority Myth*, an article by Joanne Lee in which Lee recalls when she was forced to sit with and endure the abuses of a disruptive student in her sec-

ond-grade class.

In keeping with the expectations of her family and culture, Lee thought she had done something wrong to deserve to be mistreated, and she did not complain about or challenge the unfairness of her situation.

Participants discussed how the myth of Asian-Americans as the "model minority" is both exploitive and unfair.

Women experience the impact of myths about Asian-Americans and those about women in the context of a traditionally sexist culture.

Wendy Leung, of Campaign, read three poems by Asian-American women. One poem concerns a woman who is beaten by her husband using a traditional Japanese doll. In the poem, the woman finally leaves the violent relationship and takes the doll with her. Some audience members thought the doll symbolized carrying oppressive stereotypes with her, while others thought it was a sign of strength.

The event was sponsored by the Office of Women's Programs and Services.

## Harris: students try to succeed

By Carol Lombardi  
News Editor

Pres. Zelema Harris told the Student Senate on Nov. 4 that she sees an increased commitment by students to succeed and make the best of their time at Parkland.

To assist them, she said the College has put programs in place such as peer tutoring.

In response to some senators' concerns about financial aid issues, Harris said many students take financial aid for granted and that stu-

dents must be committed to working hard in order to continue receiving financial aid. She expressed her willingness to address some of the problems in the financial aid process if students take the initiative to identify specific problems.

Student Government President Phil Carter asked for her opinion about the recent proposal to remove students from the grade grievance committee.

Harris she she does not see a problem with students

on the committee, but she is aware of some faculty concerns and suggested that Student Government representatives meet with Parkland College Association representatives.

Harris praised Student Government for its efforts to unit student clubs and organization and its continued efforts to support cooperation among various student organizations.

Julia West, sophomore, was appointed to fill the open senator position.

### Computers for the Future



486SX - 25 MHz System 245MB Hard Disk 14" SVGA Monitor	\$1235
486DX - 33MHz System 340MB Hard Drive 14" SVGA Monitor	\$1499
486DX2 - 66MHz System 425MB Hard Drive 14" SVGA Monitor	\$1778

Fully Warranted  
Quantity Discounts Available  
Consultants & Dealers Welcome  
Non-Proprietary for easy upgrades

217-359-5155  
800-27-VALUE

All systems include True Intel® 486 CPUs • 4MB RAM (add RAM available) • 8 Expansion slots • Mini Tower • Keyboard • 3.5" HD Floppy Disk • SVGA Video Card • Keyboard • 2 Serial / 1 Parallel Ports • Full Size Motherboards • Custom Modifications Available

Fully Warranted • Quantity Discounts • Customized • Intel Chips • Non-Proprietary

### Take Home a Cookie For The Holidays!

12" Large  
Custom Decorated Cookie  
Only \$7.50

Valid only with coupon. Not valid with other coupons or discounts. Offer expires 12-10-93.



712 S. Sixth • 384-5246

(Reg. \$7.95)  
A Great  
Colorful Recipe  
& Your Message!  
• Birthdays •  
• Anniversaries •  
• Graduations •  
• Heart Shaped •  
• Available

### Campus Notes:

Garage-a-rama, Tues. Nov. 23  
10 a.m.-2p.m., Gallery Lounge  
Get ready for the largest campus garage sale you have ever seen. Several PC organizations have joined together for a huge garage sale. Come find that special item. Sponsored by I.O.C.

Travel Fair, Mon., Nov. 15, 10 a.m.-2 p.m., Gallery Lounge  
Now is the time to schedule your spring break trip. Come speak with several local travel agencies and register for free gifts.

## License Facility

(continued from front page)

ity would have," Hucal said. Parkland Ridge residents are not the only ones who are aware of the situation.

"I'm concerned about the facilitation of the traffic, and no matter what happens, I don't want anything to increase the chance of one of our students or staff being hurt in an accident," Brad Hastings, president of the Parkland College Association said.

There are traffic control cords installed by the city at the Bradley entrance to PC to examine how many vehicles use that entrance.

Hucal said she checked with the city and that intersection would be about sixth or seventh in line to receive a stoplight. "That would probably takes years," Hucal said.

She was told a stoplight costs approximately \$200,000.

The petition states the new facility's "15 percent increase in floor space and minimal increase in parking do not warrant the substantial increased cost." It also asserts that the state could have cho-

sen a more "central location" in the community.

The property is located in a R-6 zone, which allows multifamily residential and office uses.

"The state is paying one-third more for the new location. The parking lot, which was the major reason they relocated, is certainly not significantly larger. That was the incentive to move," Prussing said.

The cost to rent the old facility on Bloomington Road was \$3,300 a month. Rent for the new facility is \$4,323 a month.

Hucal said the Neighbors for Parkland Ridge are not giving up. "At our last meeting, we started a letter-writing campaign. We're going to write to the secretary of state, the state representative, and the governor.

"We are going to stay formed as a group. There are a few more pieces of undeveloped land in the neighborhood. We're going to keep an eye on what will happen."

## Cap pilot

(continued from front page)

The student registering at Parkland for the first time will fill out and submit an application form. The student who needs an assessment before completing registration will be referred to the Assessment Center or to a counselor.

The student then will take the necessary assessment test(s).

Subsequently, the student will receive the test results and register for the appropriate courses.

Reading levels and requirements for each level are:

**Grade 4 and Below**  
Students at this level are referred to the Parkland Adult Basic Education program. They are not eligible for pre-college or college-level courses at Parkland.

**Grades 5 and 6**  
Students take CCS 097. If they wish to sign up for additional courses, they may take only pre-college courses in English, mathematics, and the social sciences. They are not eligible to take any college-level courses. They may take a maximum of 14 hours.

**Grades 7, 8, and 9**  
One-course enrollees may take any course that is approved for this reading level. Two-course enrollees take CCS 098 and any course that is approved for this reading level. Multiple-course enrollees take CCS 098.

They may also be required to take a pre-college course in English or math if their assessment indicates a deficiency in those subjects.

They may take any other courses that are approved for this reading level. They may take a maximum of 14 hours.

**Grades 10 and 11**  
One-course enrollees may take any course for which

they meet the prerequisites.

Two-course enrollees take CCS 099 and any course for which they meet the prerequisites.

Multiple-course enrollees take CCS 099. They also may be required to take a pre-college course in English or mathematics if their course assessment indicates a deficiency in those subjects. They may take any other courses for which they meet the prerequisites and take a maximum of 16 hours.

**Grade 12 and Up**  
These students may take any courses for which they meet the prerequisites.

Multiple-course enrollees, however, may be required to take a pre-college course in English or mathematics if their assessment indicates a deficiency in those subjects.

.....  
New students applying for admission to Parkland will be asked to supply evidence of their reading level. ACT scores and other similar measures may be acceptable if the scores are high enough to indicate a Grade 12 reading level.

Transferable college-level coursework in reading-intensive courses from other colleges, or the equivalent, are considered adequate evidence of a Grade 12 reading level.

If a student's initial reading ability is below the Grade 12 level, an academic advisor will monitor the student's progress each semester. The advisor will work with the student in selecting courses that match his/her reading level until the student reaches the Grade 12 level. Students generally have two semesters to reach the Grade 12 level.

**"The bottom line is to ensure that students are able to meet their educational goals while attending Parkland College."**

—Chuck Baldwin  
Associate Vice Pres.  
Academic Services


**"The bottom line is to ensure that students are able to meet their educational goals while attending Parkland College."**

—Chuck Baldwin  
Associate Vice Pres.  
Academic Services

**"From the perspective of student development, we think it is a great program to assist students in achieving success. Prior to this, we have not had a good mechanism to assure proper placement in college level courses. This gives us an assurance of appropriate reading level for the course. The Board of Trustees and the PCA both passed the program unanimously."**

—Brad Hastings  
President  
P.C.A.

*Pick up your copy of the Spring 1994 class schedule now!*

Carolyn Unzicker  
  
**Unzicker Stables Tack Shop**  
 Pre-Holiday Sale: Nov. 15-30  
 1162 County Road, 900 E Telephone  
 Champaign, Illinois 61821 (217) 359-5641

**SEASON'S GREETINGS FROM SAM'S CLUB**

Because your company is a pre-qualified organization, arrangements have been made for you to receive this complimentary holiday pass to shop at SAM'S Club. From now until December 31, 1993 you can visit any SAM'S Club as often as you wish. Just present this card at the door and to the cashier when making a purchase by cash or Discover® card. You'll pay only 6% over the posted prices. Sorry check writing privileges are reserved for SAM'S Club members only. For only \$25 per year (plus tax where applicable) an eligible individual may become a member.

Club hours for passholders are:  
 Noon to 8:30 P.M. Mon.-Fri. 9:30 A.M.-7:00 P.M. Sat.  
 Noon to 6:00 P.M. Sun.  
 Hours may vary by location

**SAM'S CLUB HOLIDAY PASS**

Name \_\_\_\_\_  
 Address \_\_\_\_\_  
 City \_\_\_\_\_ State \_\_\_\_\_ Zip \_\_\_\_\_  
 Telephone Number \_\_\_\_\_  
 Pass Number 176931723  
 Expiration Date 12/31/93

**SAM'S CLUB**

**kinko's**  
 your branch office

**\$2.00 OFF CUSTOM SWEATSHIRTS**



505 S. Mattis Avenue • Champaign • 355-3400  
**OPEN 24 HOURS A DAY - 7 DAYS A WEEK**

**\$2.00 OFF PERSONALIZED CALENDARS**



offer expires 12/20/93

*Final exams begin Monday December 17. Look for final examination schedule in the next Prospectus.*

## Blade wins \$100 in talent show

by Jeffrey Simpson  
Prospectus Staff Writer

Mike Blade is now \$100 richer after taking first place in the annual talent show sponsored by the Activities and Services Board at Parkland.



Mike Blade

The Nov. 4 event, which took place in the Parkland Theater, featured 16 different performing acts; the top three received monetary awards.

Blade, like all the performers in the show, is currently enrolled in classes at Parkland. He said he was "very surprised" to have re-

ceived the first place honors.

"There were a lot of great acts out there tonight," he said.

Along with Blade winning first prize for his mixture of dance and high-flying prop twirling, singer Kerri Thompson won the \$75 prize for second, and the comedic duo of Aaron Clark and Karl Hart received \$50 for third place honors.

More than 100 people attended the talent show and were not afraid to let the performers know they were there.

Shouts of encouragement filled the theater as each performer took the stage.

From country music to rap, from a capella to gospel, the talent show offered a wide variety of entertainment, although, surprisingly, very little hint of competition.

Only two of the participants interviewed said they felt it was a competitive evening. The remainder said they were just glad to have had the courage to make it up to the stage.

## Student helps fight PC fire

by Tina Henderson  
Assistant Editor

When Firefighter Matt Weber took off work to attend his Monday night Algebra class Oct. 22 at Parkland, the last thing he expected to do was fight a



Firefighter Matt Weber

fire.

Weber is taking classes to fulfill a core requirement for his bachelor's degree in Fire Management in order to prepare for a possible upper management position in the department.

When the first alarm rang, Instructor Dan Anderson left the classroom to find out which areas of the building were effected. When Ander-

son returned he told his class about a problem a couple years back when students were pulling the fire alarm in order to get out of taking their midterms. Unfortunately, for Parkland, this was not the case.

"We had the windows open, and I could smell the smoke," Weber said. "I knew immediately it wasn't a prank."

Anderson asked the students to remain in their seats until further information was given. Within minutes, the order was given to evacuate.

"Anderson was rock-solid calm," says Weber. "He acted in a very professional manner clearing his classroom."

Weber, who was on compensatory time (vacation time) from the Urbana Fire Department in order to attend class, asked permission from Anderson to leave to help with the evacuation.

Under department rules, section 5.2 states: "Every employee of the Urbana Fire Department shall use their training and capabilities to protect the public at all times, both on and off duty." Weber, who has served on the department

for 17 years, did not hesitate.

He assisted 10 employees and students who were still in the smoke-filled area to leave the building.

"Most people assume that when there's a fire that people will automatically leave the building, and that's not always the case," says Weber.

Weber then joined Jim Hand, head of night security, in the College Center where the smoke was about 6 feet from the floor. Again, there were still employees and students who had not left the area and had to be evacuated.

Weber helped firefighters on the second floor of the Library before leaving the building. His fire crew was arriving and has his gear on the truck.

His crew opened walls and ceilings on the second and third floors of the Library "knocking down" the fire. Then they were deployed to the roof for another assignment. By this time, the fire activities were winding down.

"I just did my job," says Weber. "I didn't do anymore than any other firefighter would have done."

## Parkland sings for Sing Gospel!

by Ira Leibowitz  
Prospectus Staff Writer

"I feel like I've returned home," said guest conductor Dr. Robert Ray, at the Nov. 7 production of *Sing Gospel!* when he joined Parkland's choral department in a celebration of Gospel music.

Ray, who has an M.A. in

music from U. of I. and a Ph. D. from Northwestern University, conducted a few ensembles during the last third of the 90-minute production. His *Gospel Mass*, an interpretation of classic Catholic liturgy, was featured.

The first performance of *Gospel Mass* occurred in 1979 when the U. of I.'s Black Chorus teamed with the Champaign-Urbana Symphony.

Also present Sunday were the Parkland Choral Union, Chamber Choir, Gospel Ensemble, and the Urbana High School choir, directed by Willie Summerville.

A member of the Parkland Choral Union, Mike Concialdi said, "Simply put, it was fun. It was good to blend the different styles of music and the whole community into one group effort and to sing beautiful Gospel music."

Musicians in the ensemble were: Mars Bigby and Steven Davis, bass; Steffan Jones, drums; Willie Summerville and Joy Fiala, piano, and Todd Taylor, organ, livened up the show. Vocal soloists were: Jesse McMillan, Brenda Porter, John Spencer, Sean Tatum and Brenda Williams.

There's a whole lotta fun every day at PUTT 'n' PLAY.

### IT'S A BLAST!

Thurs.-Family Night...12" pizza, 4 sodas, 4 desserts, 4 golf games & 20 game tokens for only \$15.00. Fri.-Moonlight Golf...8 p.m.-11 p.m. Play 18 holes of golf in the dark with glow-in-the-dark balls. Only 4.00.

Hours:  
Mon.-Thurs.—Noon-10 P.M.  
Friday—Noon-11 P.M.  
Saturday—10 A.M.-11 P.M.  
Sunday—Noon-10 P.M.  
(Will Close Sunday evenings for Private Parties)

109 W. John St. 355-7888  
(Also at 3234 N. Vermillion, Danville)

COUPON: 50% OFF SUPER SATURDAY SPECIAL. NOT GOOD WITH ANY OTHER OFFER. LIMIT ONE. EXPIRES 12/31/93.

Mon.-1/2 Price Day...Everyone plays golf for \$1.50. Tue.-Double Token Day...2 tokens for the price of 1. Wed.-Teen Night...3 p.m.-Close \$1.00 off golf plus FREE popcorn all night.

## Oil Change? Think Fast.

### Fast Lube

"Our Name Says It All"

CHAMPAIGN  
1301 N. MATTIS  
355-1014

MONDAY-FRIDAY.....8 AM - 7 PM  
SATURDAY.....8 AM - 6 PM

No Appointment Necessary.

---

### OIL CHANGE PLUS LUBE

Drive thru oil change, filter & lube. No appointment and in approximately 10 minutes.

Includes:  
•Up to 5 qts. of oil, 10W-30, 10W-40 •Oil Filter  
•Lube Chassis •Check and Fill All Fluid Levels  
•Clean Outside Windows •Vacuum Interior  
•Check Air Filter and Wiper Blades  
•Check & Inflate Tires

**\$18.99\*** REG. \$23.99

All work guaranteed. Coupon must be presented at time of service. \*Most cars, plus tax. Not valid with other offers. OFFER EXPIRES 12/15/93

---

### FREE OIL CHANGE & LUBE WITH RADIATOR SERVICE

Oil Change includes:  
•Up to 5 qts. of oil, 10W-30, 10W-40 •Oil Filter  
•Lube Chassis •Check and Fill All Fluid Levels  
•Clean Outside Windows •Vacuum Interior  
•Check Air Filter and Wiper Blades

Radiator Service includes:  
Drain System Coolant, Refill System with Coolant, Pressure Test System, Inspect Cap & Hoses.

**\$39.99\*** REG. \$58.98

All work guaranteed. Coupon must be presented at time of service. \*Most cars, plus tax. Not valid with other offers. OFFER EXPIRES 12/15/93

---

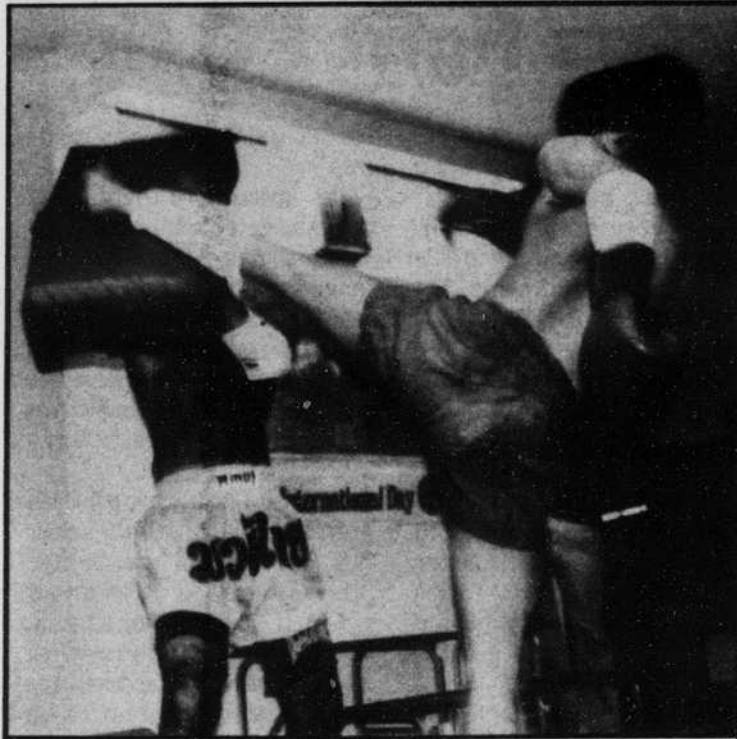
### OIL CHANGE & LUBE PLUS TRANSMISSION SERVICE

Oil Change includes:  
•Up to 5 qts. of oil, 10W-30, 10W-40 •Oil Filter  
•Lube Chassis •Check and Fill All Fluid Levels  
•Clean Outside Windows •Vacuum Interior  
•Check Air Filter and Wiper Blades

Transmission Service includes:  
Replace Filter, Gasket and Fluid.

**\$49.99\*** REG. \$63.98

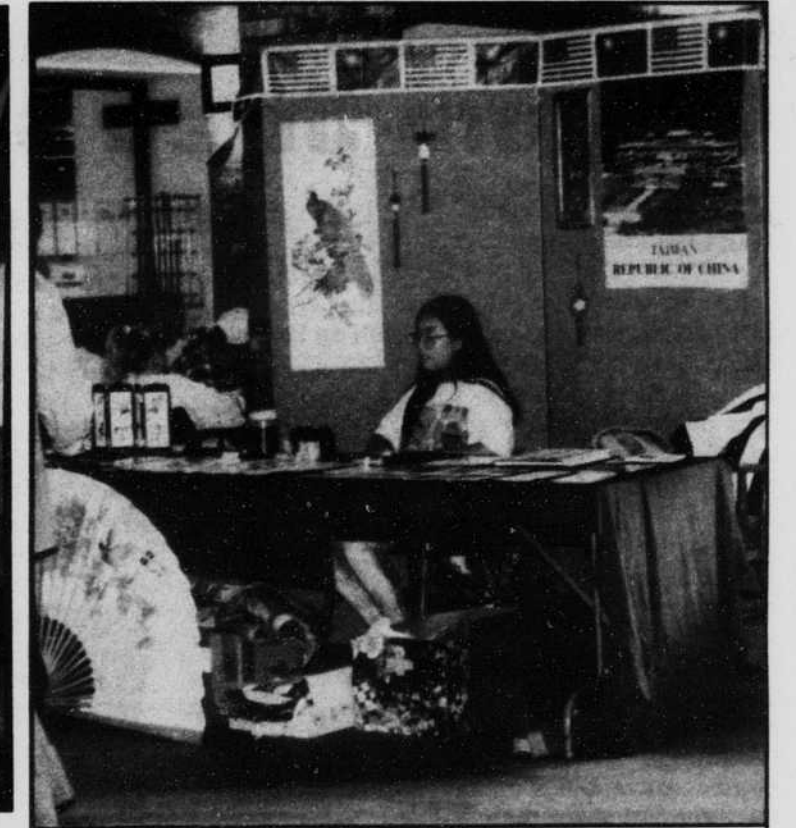
All work guaranteed. Coupon must be presented at time of service. \*Most cars, plus tax. Not valid with other offers. OFFER EXPIRES 12/15/93



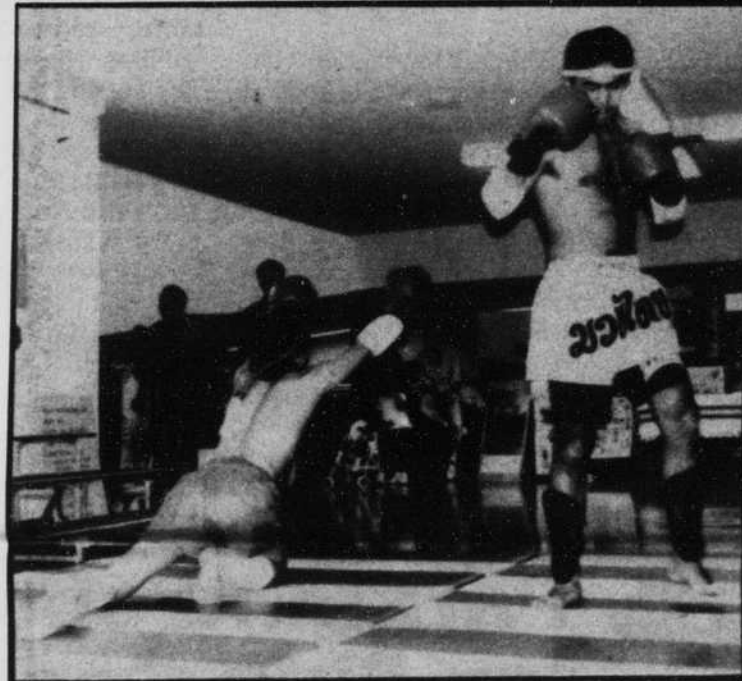
From Thailand, Vinai Sukcharoen and Meatha Sucess



International Student Association (left to right) Mirna Zein, Maricleia Bravim, Michele Peterson, Gisela Tong, Richard Galang, Peyman Purkhosrow, Anh Van Ho, Majid Ghadiri, Misha, Mona, Sara, Reo Wilhour



Daughter of Parkland student Vivian Wang



Vinai and Meatha demonstrating Muay (kickboxing)

Students from 61 countries attend PC

### International student fashion-talent show

by Tony Neagus  
Carol Lombardi  
Prospectus Staff Writers

Photos by Tina Henderson  
and Tony Neagus

Beginning with a demonstration of kickboxing that drew gasps and applause from the audience, the International Student fashion-talent show last week developed into a dazzling display of ethnic costumes.

Wearing traditional headpieces, Vinai Sukcharoen and Meatha Sucess, both from Thailand, opened the show with "Muay," a type of kickboxing. First, however, they knelt, praying and stretching to traditional Thai music.

"Children, do not imitate these acts at home," advised Benson Yeum, master of ceremonies.

Then the "fighters" began to exchange blows, each with a red punching bag to aid in blocking. Soon, they discarded the bags, and many of the kicks and arm blows drew gasps and applause from the audience.

Although there were several other College events scheduled for that time, Reo Wilhour, International Student advisor, noted that the crowd

stayed to watch 15 international students show their fashions of seven different cultures.

Anh Van Ho, from Vietnam, showed a black "ao dai" and said, "It's the traditional clothing of the women in my country, most often worn for weddings and New Year." Worn with long, flowing white pants, the front of the "ao dai" was embroidered with purple lillies.

Showing off ethnic style from her homeland of Ethiopia, Deedee Tadese said, "My gown is worn for holidays and is made by hand from cotton."

The creme-colored gauze dress, flattered by a large sash, was embroidered down the front and about mid-calf in length.

Models showing fashions from India, Japan, and the Phillipines received enthusiastic applause. Masomeh Akbarpour, from Iran, wore a green and gold floor-length gown with a gold veil that had "at least 12 yards of material."

Siwi Eter, Micronesia, sang the "Horse Dance," a song from her country, and Chuan Xin Lin performed a traditional Chinese folk dance.

Rounding out International Day, seven students performed the "Electric Slide," and looked like they really had an enjoyable time doing it.



Francisco Quevedo and daughter Vanessa from the Phillipines



Juno Lee models traditional clothing from her homeland

The 61 countries and the number of students attending Parkland this semester are:

Argentina	1
Bangladesh	1
Brazil	1
Cameroon	3
Canada	1
Chile	1
China	28
Colombia	1
Croatia	1
Czechoslovakia	1
East Africa	1
Egypt	1
England	1
Equador	2
Ethiopia	1
France	1
Germany	3
Greece	3
Guatemala	2
Hong Kong	2
India	7
Indonesia	7
Iran	1
Italy	1
Jamaica	1
Japan	42

Kenya	2
Korea	45
Kuwait	1

Lebanon	2
Macedonia	1
Malawi	1

Malaysia	1
Mali	1
Mexico	1
Micronesia(fsm)	1
Mozambique	1
Nepal	1
Nigeria	3
Pakistan	3
Phillipines	1
Poland	1
Puerto Rico	2
Russia	2
Rwanda	1
Saudi Arabia	3
Sierra Leone	1
Singapore	2
South Africa	1
Spain	4
Sri Lanka	3
Sweden	1
Taiwan	13
Thailand	7
Trinidad	1
Turkey	1
Uganda	1
Venezuela	4
Yemen	1
Yugoslavia	1



Parkland students Juno Lee, Tao Xia, and Connie Huang wearing traditional clothing from their homeland.



Vanessa, enjoying the days festivities

## Grad patents new process

## Custom-fitted shoes

By Julie McDuffee  
Prospectus Staff writer

Tony R. Henson, a 1987 advertising graduate of Parkland, has come up with an idea that may revolutionize the athletic shoe industry—a way to make custom athletic shoes available to the general public at a price that will compare with the price of off-the-rack shoes.

A customer will have his/her foot precisely measured by a step-on device, then will use a computer screen to choose the color and performance level of the shoes. When all the choices have been made, the information for the custom fitted shoes will be sent by modem to the manufacturer. Henson said he expects shoes to be ready one week after the customer places an order.

Henson started thinking about shoe de-

sign when he was in high school and wanted to jump better. "I couldn't jump," he said, "so I fiddled around and added 4 inch springs to my shoes."

He has been researching and working on his new concept since 1989 and said he has learned a lot, such as the importance of patents. Several years ago, he had the idea for air cushioned insoles and inflatable air pockets around the ankles before the now famous "pumps" came out, but he didn't have any patents on the idea.

Henson went to Southern Illinois University to do part of his research and is currently working with design engineers at the

University of Illinois doing the final changes and testing of the product. They hope to complete testing and negotiations with the manufacturer by spring.



Tom Henson

## 6 Artists show landscapes

by Carol C. Lombardi  
News Editor  
Jason R. Brown  
Prospectus Staff Writer

"Contemporary Landscapes," now at the Parkland Gallery features six artists in an exhibit of drawings reflecting "the way the artists respond to the environment they are involved in every day."

The range of work includes expansive pastel landscapes, erased charcoal suburbs, abandoned industrial sites, and an eerie crime scene.

The six-artist exhibit was curated by Parkland's Don Lake, Art instructor, who also is among the exhibitors.

Several of Lake's charcoal drawings depict abandoned factories. There are no people, only the play of light on the brick and metal. These reflect the suffering of the industrial "Rust Belt" as its factories fall into disuse along with the workers who used to inhabit them.

Ronald Kroutel presents *West Side/Brierwood*, con-

structed with erased charcoal. It shows a darkening sunset sky, with empty houses, buildings, and streets. The juxtaposed images are derived from two drawings, creating a contradictory perspective. *Arden Place/Mausoleum* uses the same "double

## Artists featured in exhibit

Don Lake  
Robert L. Barnum  
Richard J. Van Wagoner  
Matthew Daub  
Ronald Kroutel  
George Atkinson

image" technique in a suburbia and cemetery setting.

Included as well is George Atkinson with *South of Taylor Springs* in pastel. The artist draws cornfields in mid-morning, using blue and green combined with brown on the field. Atkinson's work is colorful, in sharp contrast to the many dark industrial images in the rest of the exhibit.

Richard Von Wagoner

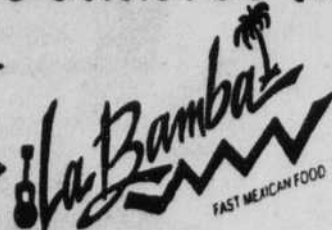
shows *Night Rider* done in charcoal. It depicts a winter interstate road with sagging black clouds. *I-15* repeats his interstate theme while *Waiting for the Parade* portrays the ever-present road in another context.

Robert Barnum uses pencil and watercolor to incorporate human figures, one of only two artists to do so in this exhibit. He does not separate the people from their landscape, instead combining the rhythmical, distorted images into a jumble of people, objects and houses tumbling around the paper.

Matthew Daub's *Where the body was found*, done in conte crayon, is a serene image that takes on an eerie feeling from the inset in the middle of the drawing. In the midst of a concrete overpass, overgrown weeds and a dark parked car, there is a detailed drawing of a solitary tennis shoe.

The exhibit incorporates new concepts and striking contrasts compared to the landscape drawings found in motel rooms.

## BURRITOS AS BIG AS YOUR HEAD!®



Our Burritos, Tacos and Tortas hit the spot after the bars kick you out!



We satisfy when the bars can't! 1905 Glen Park Dr.  
Open 11a.m. - 2:30a.m.

## PREGNANT?

We can help you!

- FREE pregnancy testing.
- CONFIDENTIAL Counseling.



BIRTHRIGHT

110 1/2 N. Neil St.  
Champaign, IL

351-7744 or 1-800-550-4900

Hours: Mon. 10am-1pm Tue.-Sat. 10am-1pm  
Walk in or by appointment. (Above Lox Stock n' Bagel)

PARKLAND COLLEGE

## Parkland This Week

## Wednesday, November 10

\*Business Series III: Management Strategies for Building an Effective Small Business • 6:30-9:30 p.m. • Room L244 • Continues Wednesdays through Dec. 8 • 217/351-2414

## Thursday, November 11

\*State-wide Conference: "Getting Down to Business: Making Gender-Balanced, Multicultural Education a Reality in Illinois Schools" • Continues Friday and Saturday • 217/351-2541

\*Prospectus Open House • 11 a.m.-1 p.m. • South Lounge and Room X155 • 217/351-2593

\*Home Buyer's Seminar (WKS 963-096) • 7-9:30 p.m. • Room L111 Continues Nov. 18 • 217/351-2414

## Friday, November 12

Planetarium Shows • Fall Prairie Skies, 7 p.m.; Questions, 8 p.m.; Zeppelin: Flight to Middle-Earth, 9:30 p.m. • William M. Staerkel Planetarium • 217/351-2446

## Saturday, November 13

Planetarium Shows • Little Star That Could, 11 a.m.; Flower Planet, 12 noon and 7 p.m.; Questions, 1 and 8 p.m.; Zeppelin: Flight to Middle-Earth, 9:30 p.m. • William M. Staerkel Planetarium • 217/351-2446

## Sunday, November 14

To Music and Cecilia: Parkland Camerata Concert • 4 p.m. • St. Patrick's Church, Urbana • 217/351-2366

## Monday, November 15

Travel Fair • 10 a.m.-2 p.m. • Gallery Lounge • 217/351-9627

## Tuesday, November 16

\*Going International: A Guide to Success in Exporting (WKS 991-850) 7:30-10:30 a.m. • Radisson Suite Hotel, Champaign • 217/351-2414

\*Microsoft Word for Windows: Introduction (WKS 562-094) • 1-4 p.m. Room B227 • Continues Thursday • 217/351-2554

\*Business Training Center Workshop: Conflict Resolution • 1:15-4:15 p.m. • Myna Thompson School, Rantoul • Continues Nov. 23 217/893-1240

Lifelong Learners Lecture: Amish Home — A Photo Essay • 1:30 p.m. Champaign Public Library • 217/351-2544

\*Career Planning Seminar • 6-8 p.m. • Meet at the Information and Welcome Center Desk • 217/351-2536

## Wednesday, November 17

Parkland Sampler in Rantoul • 6-7 p.m. • Myna Thompson School 217/893-1240

## Thursday, November 18

Health Information Lecture: The Care and Feeding of Your Body 12 noon-1 p.m. • Myna Thompson School, Rantoul • 217/893-1240

Women's Basketball vs. Spoon River • 7 p.m. • Parkland Gymnasium 217/351-2226

## Friday, November 19

Community Lecture in Rantoul: "Songs and Stories of Midwest Railroad" • 12 noon-1 p.m. • Rantoul Recreation Department 217/893-1240

Friday Salon: Lunch and Discussion Group • 12 noon • X212 Lounge • 217/351-2541

Planetarium Shows • See Nov. 12

## Saturday, November 20

\*Dealing with Major Trauma (WKS 717-094) • 8 a.m.-5:30 p.m. Room C118 • 217/351-2292

Planetarium Shows • See Nov. 13

Women's Basketball vs. Lake Land • 5:30 p.m. • Parkland Gymnasium 217/351-2226

Men's Basketball vs. IVCC • 7 p.m. • Parkland Gymnasium 217/351-2226

## Tuesday, November 23

Robert McCauley Solo Art Exhibit • Monday-Friday 10 a.m.-3 p.m., Monday-Thursday 6-8 p.m., and Saturday 10 a.m.-noon • Art Gallery Continues through Dec. 15 • 217/351-2485

Men's Basketball vs. Lake Land • 7:30 p.m. • Parkland Gymnasium 217/351-2226

\*Preregistration required.

All events are open to the public.

The William M. Staerkel Planetarium and the Parkland Theatre are located on the west side of Parkland's campus near the Duncan Road entrance. Parking is available in lots M-1 and C-4.



Parkland College  
Learning is an investment in your best interest.

2400 West Bradley Avenue • Champaign, IL 61821-1899 • Campus Tours 217/351-2561  
General Information 217/351-2200 • Admissions 217/351-2208 • (toll-free) 1-800-346-8089

## Spikers head for 5th tourney

by Alden Loury  
Sports Editor

Brenda Winkeler, PC volleyball coach, has never failed to take a Cobra team to the regional tournament. This year was no exception.

The Cobras' comeback win over Lincoln 15-5, 4-15, 7-15, 15-7, 15-12, at the Parkland Gymnasium on Nov. 6 qualified them for the Region 24 tournament. The Cobras under Coach Winkeler have now reached the regional tourney five straight years.

The Cobras' season nearly came to an end at the sectional tournament when they fell behind two games to one. "This would have been a disappointing season had we lost to Lincoln," Winkeler said.

After taking the first game easily, the Cobras seemed to self-destruct with a negative hitting percentage in the next two frames. "In the second and third games, we made mistakes and got away from our game plan," Winkeler said.

The coach likes to print a one-page report outlining the Cobras' strategy for the upcoming match. After reviewing tapes of Lincoln, Winkeler noticed their patterned offense. "They only go to two people. They were very predictable," she said. Coach Winkeler wanted her team to concentrate on blocking Lincoln's hitters.

In the fourth game, the Cobras got back on the same page and began their rally. Angela Lohr and Tiffany Grunert blocked well up front, and Anne Chatterton, despite missing nearly the entire week of practice, helped out with 12 digs. Offensively, Grunert and Kendra Blaudow each had 7 kills.

Wendy Gibson gave the team a boost after a poor start. "(Gibson) didn't play well early, so I sat her down. I told her it was OK, everybody makes mistakes," Winkeler said. According to her coach, the freshman outside hitter needed a brief rest to regroup. "When she was ready to come back, I put her back in," Winkeler said. After the respite, Gibson responded with spirited play.

Winkeler gave credit to the entire team for the rally. "Nobody had an outstanding match statistically, but we can do a lot of things together as a team," she said.

The Cobras won both their matches at sectionals (Nov. 5-6). The other victory came by forfeit when Spoon River failed to appear on the tournament's opening night.

Parkland will travel to Belleville Area Community College for the regional tournament (Nov. 12-13) and a chance to earn a spot in the national tourney.

Stiff competition awaits as the underdog Cobras, who

draw their year-long nemesis, Illinois Central College, in the first match at regionals. ICC, a nationally ranked team, has beaten Parkland on two occasions this season.

Host Belleville Area, also ranked, and Wabash will compete, as well.

"Blocking and defense are two things we'll need to do well to be successful," Winkeler said. "Our blocking has come a long way," she added.

Big games from Anne Chatterton, Lohr and Gibson can greatly improve the Cobras' chances. "(They) can dominate when they are on," Winkeler said.

Despite their previous misfortune against ICC and Belleville Area (0-4 combined), Winkeler likes the position her team is in. "We're not the pressured team," she said. "We have nothing to lose."

Should this squad be eliminated at Belleville, Winkeler would still consider the season a success. "I'm happy," she said. "The freshmen got a lot out of this season. Next year they'll know what to expect," she added.

Winkeler coached the team to a seventh place finish nationally in 1991. Her teams finished third in the region in 1992 and 1990 and fourth in 1989, her first season at Parkland.

## PC golfer to compete in national tournament

by Alden Loury  
Sports Editor

This time of year might be considered early for summer vacation planning. However, for Kyle Bauer there couldn't be a more perfect time.

The Parkland College freshman golfer finished in a tie for seventh overall at the Region 24 tournament in Alton and qualified for the NJCAA Tournament in Greensboro, N.C., next June.

Bauer was awarded the spot following playoff competition on Oct. 17, a day after team competition ended. Bauer parred two sudden death holes to claim one of the two berths remaining.

Teammate Jeremy Morton missed his opportunity when he bogied the third playoff hole and was eliminated.

Bauer was one of five golfers, in addition to the victorious Lincoln Trail team, to qualify for the Greensboro tournament.

Morton, who carded his best round of the year at Alton, will serve as the region's first alternate. He can make the trip to North



Parkland golfer Kyle Bauer

Carolina if any of the other golfers are unable to attend.

The regional capped a splendid campaign for Bauer, the Cobras' low man in five of eight outings this year. He also averaged their lowest score during the season (77.2).

"I'm excited for him," says Coach Greg Thom. "I think he's looking forward to going."

Bauer will be the first golfer to represent Parkland at the national competition since the team qualified in 1990.

## Sprint's first run a success

by Alden Loury  
Sports Editor

The Halloween tradition of trick-or-treating and dressing in costume may change slightly after this year.

The autumn holiday has a new addition called the Spirit Sprint.

The Parkland College Foundation sponsored the inaugural running of the event which keeps some of the traditional Halloween practices.

The trick is to complete the 5K Dodds Park course by running, walking, wheel-chairing, rollerblading or rollerskating - preferably in costume. However, the treat is to fund Parkland College scholarships.

Lynn Robertson, Sprint coordinator, said, "It was a success. We had a real good turnout considering the weather." More than 100 runners participated in the charity run on an extremely cold Sunday morning. Many of the athletes agreed that conditions were not optimal. "It was a slow 5K due to the wind," said Jean Driscoll, four-time winner of the wheelchair Boston Marathon and silver medalist in the 1992 Summer Olympics.

Robertson said she was

asked to put the Sprint together in July, "a very short time to plan an event like this."

WKIO Radio, Carle Clinic, and Coldwell Banker-Hallmark Realty each donated \$500 to give the Sprint a jump start.

Manpower was provided by some 40 volunteers, staff and students. "They have to be out of their minds," Robertson said of the unpaid volunteers who stood in freezing temperatures for nearly four hours. "We couldn't have done an event like this without their help. If you can't give money, giving your time is as important if not more important," she said.

Plaques and gifts donated by local businesses were given to the top competitors by age group.

Items given away included: rollerblades from Body-n-Sole, IGA gift certificates, passes to the Sunshine Dinner Playhouse, Subway sandwiches, memberships to the Body Firm, Rollerblade rentals from Wild Country, passes to the Ants-n-their-Pants video arcade, and free ice cream coupons from Ritzzy's.

An award for best costume was given to Ray Wagner,

Mahomet, for his impression of the Teenage Mutant Ninja Turtle Donatelo. There were several other runners and volunteers who dressed in costume.

Driscoll presented the awards and gifts to Sprint participants.

Driscoll, an alumna of the University of Illinois, also encourages people to get involved to help others and themselves. "Fitness is for everyone," she says. "Road racing and track are great ways to get fit and stay fit."

Robertson says the event will be annual one. She hopes that with the experience gained from this year's race and more time to plan in 1994, the next Spirit Sprint will be even more of a success.

The Parkland Foundation is a not-for-profit organization which is set up to promote, assist, and extend financial support to the College in all its endeavors. "Anything that Parkland College wants to do, the Foundation gets behind them to help raise money for it," Robertson said. "As the state gives less and less money, the Foundation's work becomes more important."

## 1993 Golf Highlights

Team Results						
Date	Site	Score	Place	Field	Team Leader	
Aug. 25	Canton	309/330	4th/8th	10	Bauer (73)	
Sept. 7	Savoy	321	1st	2	Bauer (78)	
Sept. 9	Savoy	330	5th	12	Burlington (81)	
Sept. 17-18	Danville	611	4th	12	Burlington (151)	
Sept. 24	Robinson	403	4th	7	Bauer (77)	
Sep. 30-Oct. 1	Lincoln	611/663	2nd/9th	16	Morgan (148)	
Oct. 8-9	Mt. Vernon	634	4th	12	Bauer (156)	
Oct. 15-16	Alton	624	3rd	8	2 tied with 155	

Individual Results-					
Golfer	Year	Round			Highest Top 10 Finish
		Avg.	1 Rd.	2 Rd.	
Kyle Bauer	Fr.	77.2	73	151	2nd (Canton)
Mark Burlington	So.	78.3	74	150	6th (Lincoln)
Jeff Morgan	Fr.	79.8	71	148	3rd (Lincoln)
Jeremy Morton	Fr.	80.3	75	155	7th (Alton)
Justin Kirby	So.	82.1	75	152	
Jason Ripka	Fr.	82.5	78	160	
Ben Smith	Fr.	84.2	80	164	
Steve Atherton	Fr.	84.2	77	165	
Jay Davis	Fr.	89.7	85	174	

## INTRAMURAL NEWS

Parkland Intramurals will conduct a bowling tournament at Western Bowl on November 11 from 3-5 p.m. You do not need to be preregistered to compete in the tournament. Just go to Western Bowl at 3 p.m. on November 11. Parkland Intramurals will pick up the tab for the games. Gift certificates and t-shirts will be awarded to the winners. Those present for the 8 Ball Tournament will also be able to play.



# Cobras, young and quick, tip-off 1993-94 season

by Alden Loury  
Sports Editor

The upcoming basketball season for Parkland College promises to be a question and answer session. However, with the season opening in less than a week both men's and women's squads have plenty of questions but not many answers.

Youth appears to be the biggest concern for men's coach Mark Bial and women's coach Argie Johnson.

"Young guys have a tendency to stand around and watch, they're still learning," said Bial. "We'll have to show patience in our half-court game. We can't win without it."

Johnson is concerned about the freshman women adjusting to the more physical college game. "Girls' basketball is a non-contact sport in high school. They cannot react to the physical play. It happens, but they'll have to just keep playing."

Both teams have only three players returning from a year ago and just one starter.

Injuries have presented both coaches with some added questions. Johnson has seen five players slowed by injuries, including two of his second-year players. He may be forced to juggle his line-up in the early going. Consequently, Johnson may not have a clear picture of the Lady Cobras ability until his entire roster is available, which includes three athletes who are currently with the volleyball team.

The men's squad has endured some early physical problems. However, the Cobras will enter the season without two promising freshman point guards: Jason Jackson and Leon Weaver. "We were really counting on those two to help us," Bial said.

Both coaches prefer an aggressive offensive style. "We'll try and push the ball up the court," Bial said. However, "we have to be prepared to play a half court game. Good teams can slow down a fast-break team," he added.

"I prefer an up-tempo game," Johnson said. "We can wear a team down in the first half and take advantage of them in the second half."

Defensively, both squads have shown much quickness; which can lead to steals and ignite the fast-paced offensive game they prefer. However, neither team is abundant in size and both coaches said their players will need to work hard on the boards.

The 1993-94 Parkland Men's basketball roster includes:

Quentin Bennett (Fr. 5'11"

150 lbs.), a point guard with a lot of quickness who handles the ball well.

Will Bailey (Fr. 6'1" 170), excellent athlete with many skills. He can shoot, dunk easily, and is extremely quick. "Can be a fine player if he can put the package together," according to Bial.

Mike Smith (Fr. 6'1" 195) is starting the ball well. He played PG at Rantoul high school, but Bial said he may be more of a threat outside as a shooting guard.

Marty Luxmore (So. 6'2" 165) is a transfer from Waubensee who is an excellent three-point shooter. "He's pretty polished and brings us some experience," Bial said. "When he stays within his game, he's pretty good."

Kirk Glinborg (So. 6'3" 175) is one last year's returning players. He can play at either guard position, but will begin the season as the starting point guard. "A solid player in every aspect of the game," Bial said.

Rodney Lemmons (Fr. 6'3" 180) played in Wyoming a year ago. Bial says they're still appealing to have Lemmons classified as a freshman. He is a swing man who can provide rebounding and the three-point shot.

Chato Taylor (Fr. 6'3" 170) played at nearby Champaign Central H.S. last season. Bial says he is the most versatile player capable of filling in at three positions (PG or either wing).

Wayman Upshaw (Fr. 6'4" 170) will be the Cobras' starting shooting guard. "He has a chance to be a quality player," Bial said. The freshman is an excellent scorer, fine defender, hits the boards hard for a guard and plays with much enthusiasm.

Karl Schippert (Fr. 6'4" 195) is a red-shirt freshman with a deadly three-point shot. A steady ball player according to Bial. The forward will start for the Cobras.

Red Newton (So. 6'4" 215) played last season with Parkland. Bial likes the strong play of this fine athlete who can take the ball to the hole.

Tommie Beal (So. 6'5" 190) is playing extremely well. He averaged 12.9 points and 7.9 rebounds a game last year. "We're looking for a big year from him," Bial said. An excellent inside and outside player, Beal works hard in practice and figures to lead the team on and off the court.

Jason Harden (Fr. 6'6" 215) has a nice shot from 15 feet in. Bial likes him inside if he can be physical.

Tony Batchelor (Fr. 6'6" 200) has played extremely well, according to Bial. He is a strong player on the boards who has good low-post defensive skills. "He is

still learning but can be a good player if he remains focused."

Kevin Walsh (Fr. 6'6" 195) will split much of the time with Batchelor as the Cobras starting center. Walsh rebounds well, can pass with his back to the basket and has a nice touch on his shot from 15 feet in.

Antoine Carroll (Fr. 6'6" 180) has shown the ability to be pretty good in the low post. Bial says he battles down low but may need to get a little stronger.

The Lady Cobras roster will include:

Clarice Clarke (Fr. 5'4") is a walk-on who played at Danville H.S. last year. Johnson says she "hustled" her way on to the team.

Curtrina Walker (Fr. 5'6") has been a pleasant surprise, Johnson said. She has shot the ball well and is a good ball-handler.

Nicole Buck (Fr. 5'6") is recovering from an ankle injury. She just had her cast removed and it may take a couple of weeks before she's at full strength. Buck played on the IHSA Class A All-Star Team as a senior a year ago. Johnson said he had heard a lot about her ball-handling and outside shooting.

Jami LaVicka (Fr. 5'9") is a swing player (F-G) who was a Class A all-star last season. LaVicka can drive to the basket but has developed some outside shooting range. The freshman is recovering from an ankle sprain.

Camisha Nathan (Fr. 5'9") is recovering from muscle pulls in both legs. When healthy the freshman has a great touch from outside.

Jennifer Hortenstine (Fr. 5'9") is a fundamentally sound player with a great outside shot, according to Johnson.

Anita Reifel (Fr. 5'10") has the size to help inside. Johnson says she's still learning the quicker college game.

Kris Roberts (So. 5'8") is the team captain and one of three returning from last year. Johnson says Roberts is an outstanding defensive player whose quick hands led to many fast-breaks a year ago. The Lady Cobras will need double-figure scoring totals from her this year.

KaTia Taylor (So. 5'8") is another second-year player. Taylor has been shooting well in practice. She had some teeth pulled recently and missed some practices. Johnson hopes her return is swift.

Amy Ross (Fr. 5'9") was out 2-3 weeks because of shin splints. Johnson says the News-Gazette all-star from last season needs time to recover.

Rolita Washington (So. 5'9") along with Roberts fig-

ures to lead this team. Johnson looks for her to emerge as the team's premier scorer. "After a year of learning, she is coming into her own," he said. She's adjusted to the faster pace, knows the game and has become more physical. She recently returned from an ankle injury and may start slowly.

Three players who will join the Lady Cobras once the volleyball season ends are: Kendra Blaudow (So. 5'8") adds experience, Jennifer Coffey (Fr. 5'6") passes well and Tiffany Grunert (Fr. 5'11") can add height and quickness.

## SPORTS TRIVIA

**Test your sports knowledge! Parkland's Intramural Sports Trivia Contest will run in four issues of the Prospectus. This is the second entry of the contest. Individuals may play 1-4 times. A \$20 gift certificate is awarded every entry and an overall winner with the most correct answers to the questions will be awarded a \$100 gift certificate. There was no response to the first contests so it is an easy way to win a prize. The answers to the first Sports Trivia Contest are listed below followed by this issue's questions. Write your name and your answers in the space provided and drop it into one of the Intramural sign up boxes near X153 or X154 by November 16.**

1. 182 wins—1 losses
2. November 9 and 11 from 7-11 p.m., and November 10 from 7-10 p.m.
3. Coach Mark Bial
4. November 18, 1993
5. Cobra
6. 1908
7. The free throw
8. Darryl Dawkins
9. Lou Gehrig
10. The Milwaukee Bucks

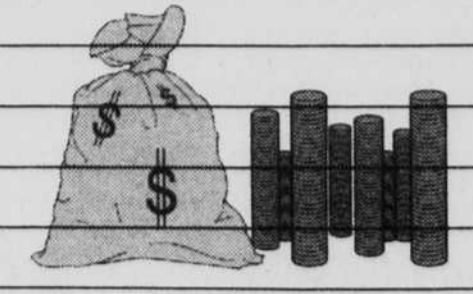
Name: \_\_\_\_\_  
Phone number: \_\_\_\_\_

1. When is Parkland Intramural's Bowling Tournament?
2. What is Michael Jordan's highest scoring game as a professional basketball player?
3. In the '93 World Series, who had the home run to complete the series?
4. What do many other countries call the sport that Americans refer to as soccer?
5. What year is the next Winter Olympics?
6. When was the last Summer Olympics?
7. What Mr. Universe champion was the spokesperson for the Presidential Sports Challenge?
8. What professional sports has Bo Jackson played?
9. What is the name of the new Colorado Rockies Stadium?
10. What sport do the Peoria Rivermen play?

.....  
**Write Your Answers Here!**  
.....

1. \_\_\_\_\_
2. \_\_\_\_\_
3. \_\_\_\_\_
4. \_\_\_\_\_
5. \_\_\_\_\_
6. \_\_\_\_\_
7. \_\_\_\_\_
8. \_\_\_\_\_
9. \_\_\_\_\_
10. \_\_\_\_\_

.....



**Directory**

- Announcements
- Automobiles
- Business Services
- Help Wanted
- Insurance
- Lost And Found
- Pets
- For Rent
- Roommate Wanted
- Rooms For Rent
- Sublets
- Travel
- Wanted To Buy
- Wanted
- Personals
- For Sale

**Business Services**

Word processing for term papers, theses, resumes, letters, etc. — laser printed. Call 832-9693. 12/8

Let my computer and I do the work for you. Word processing, greeting cards, envelopes. Call Terri at 367-2306. 11/10

Typing Services: inexpensive. 356-6830. 11/10

More than just a babysitter. Openings for 2 children to attend school w/in my home. Pre-school and older or just child care provided. In Savoy. 356-6830. 11/10

**Help Wanted**

Beach or Ski Group Promote. Small or larger groups. Yours Free, discounted or Cash. Call CMI 1-800-423-5264. 11/24

**Free Trips And Money!!**  
Individuals and Student Organizations wanted to promote the Hottest Spring Break Destinations, call the nation's leader. Inter-Campus Programs 1-800-327-6013. 11/10

**ALASKA SUMMER EMPLOYMENT** - fisheries. Many earn \$2,000+/mo. in canneries or \$3,000-\$6,000+/mo. on fishing vessels. Many employers provide benefits. No exp. necessary! Get the necessary head start on next summer. For more info, call: 1-206-545-4155 ext. A5734. 12/8

**CRUISE SHIPS NOW HIRING**—Earn up to \$2,000+/month working on Cruise Ships or Land-Tour companies. World travel. Summer and Full-Time employment available. No experience necessary. For more information call 1-206-634-0468 ext. C5734. 12/8

**Pizzeria Uno** now accepting applications for host/hostess and wait staff. Day and evening shift. Please apply in person. Near Market Place Mall. 11/10

Like to take and develop your own pictures? Have a good eye for the interesting? Come and work at the Prospectus! 10-15 hours are now available for Photo Assistants. You must be carrying 6 credit hours this fall. Please come to X155 for your application. 11/10

**Immune system deficient?**  
Restore it to health with non-toxic products, and earn a good part-time income at the same time. Call 317-884-8208 for recorded message. 11/10

If you have a love for the arts, or anything of human interest, apply for the position of Features Editor. We need you for this fall! 15 paid hours per week are available. You must be carrying 6 credit hours. Come to X155 for an application. 11/10

**Automobiles**

82 Chevy Cavalier; cylinder head needs work; needs radiator fan, dist. cap and rotor, and battery. \$50.00. Call 351-6818. Ask for Lisa or Andy. 11/10

1987 Nissan 200SX, 40K, auto, 2 DR power, SR, light blue. Good condition. Help me study abroad—buy my car. 359-5103. David (serious inquiries only). 11/10

**Help Wanted**

**Immune system deficient?**  
Restore it to health with non-toxic products, and earn a good part-time income at the same time. Call 317-884-8208 for recorded message. 11/10

If you have a love for the arts, or anything of human interest, apply for the position of Features Editor. We need you for this fall! 15 paid hours per week are available. You must be carrying 6 credit hours. Come to X155 for an application. 11/10

If your a curious person who just has to know what's happening and likes to write, too, come to a Prospectus staff meetings held each Tuesday at noon in X155. You'll be paid \$.45-\$.65 per column inch when published. You must be able to write objectively. If you can't come to the meeting, just stop by... 11/10

**Automobiles**

82 Chevy Cavalier; cylinder head needs work; needs radiator fan, dist. cap and rotor, and battery. \$50.00. Call 351-6818. Ask for Lisa or Andy. 11/10

1987 Nissan 200SX, 40K, auto, 2 DR power, SR, light blue. Good condition. Help me study abroad—buy my car. 359-5103. David (serious inquiries only). 11/10

**For Rent**

Sublease large furnished efficiency apartment, 309 E. Clark \$260.00 mo. Pay only electricity. Available Jan. 1-Aug. 1, 1994. Call 351-6790. 11/10

**COUNTRY FAIR APARTMENTS**  
MONEY SAVING RATES  
HEAT, WATER, GAS, SATELLITE TV, REFUSE, AND SEWAGE PAID

- Large 1 & 2 Bedroom
- Furnished or Unfurnished
- Frost-free GE refrigerator
- GE electric range w/ self-clean oven
- Lots of spacious closets
- Hassle-free laundry each bldg.
- 24-hour, on-site, management/maintenance service
- Pool, BBQ, tennis, basketball, and playgrounds
- Free lighted parking
- Walk to shopping, restaurants, and theater
- On MTD bus line
- Flexible lease terms
- One small pet welcome with deposit

359-3713 2106 W. White, C  
Weekdays 9-5:30, Saturday 9-12  
No appointment necessary to view model apartment

Who Can Give You The Kind Of News That's Indepth?



Cobra Vision? Think Again!

Only the Prospectus can do that. Read the Parkland College Prospectus.

**For Rent**

**BARR REAL ESTATE**  
We have campus and off-campus units ranging from 1 to 4 bedrooms, either furnished or unfurnished. Call us about renting now.  
Call 356-1873

352-7910  
**DUPLEX LIVING FROM \$319**  
NEAR THE NEW WALKMART AND SAIN'S CLUB STORES  
CARPETED, CENTRAL AIR, DISPOSAL, W/D HOOK-UPS, FURNISHED OR UNFURNISHED  
NO CHARGE FOR MOST PETS!

2 BDRM DUPLEX	FROM \$219
2 BDRM W/ GARAGE	FROM \$289
3 BDRM DUPLEX	FROM \$389
3 BDRM W/ GARAGE	FROM \$439

Garbage Pick-up Included. Appliances & Furniture Available.  
Mon.-Fri. 9am-6pm Sat. 10am-6pm  
Office at: 510 S. 4th C.

Your Support of Our Advertisers is Greatly Appreciated.

**Classified Ad Form**

Name: \_\_\_\_\_  
Address: \_\_\_\_\_  
Phone: \_\_\_\_\_ Student: Yes  No   
Dates to Run: \_\_\_\_\_  
Ad to Read: \_\_\_\_\_

Under Classification of: \_\_\_\_\_  
\$2.50 Students or \$3.50 Non Students for 1-35 Words. All Ads Must be Prepaid. Make Checks Payable to Parkland College. Tearsheets Will be Sent if a Self-Addressed Stamped Envelope is Enclosed.

**THOUGHT ABOUT THE HOLIDAYS? WE HAVE!!!**

- Want to earn extra money for those special Christmas gifts?
- Kids in school?
- Retired, but not content with sitting at home?
- Looking for a part-time job between classes?

If you answered "Yes" to any of these questions, then come to K's for the Holidays! We need temporary help for the holiday season!  
K's now has openings in the following areas:

• Fine Jewelry	• Furniture
• Customer Service	• Cashiers
• Electronics	• Toys
• Sporting Goods/ Gun Counter	• Warehouse
• Greeters	• Clerical
	• Housewares

**We pay BASE + COMMISSION + BONUS for all sales positions!**  
If you are an outgoing person who enjoys serving the public ...

**APPLY IN PERSON**  
Mon., Wed., & Fri. 10:00 a.m.-7:30 p.m.  
Tue. & Thur. 10:00 a.m.-9:00 p.m.  
1307 N. Mattie Ave. Champaign, Illinois  
— No Calls Please —  
Equal Opportunity Employer

**K's Merchandise**  
A Division of K's Inc.

**TIMELESS TOYS**

Featuring educational & creative toys designed to spark the imagination of infants through adults.

Ask about our new VIP Toy Club

1707 W. Kirby, Champ. • 352-5648

**Four years of college assistance for one weekend a month.**

You're on your way to college. And you're looking for a part-time job to help you pay for it. Join the Illinois Army National Guard! For about two days a month and two weeks a year, you'll work a part-time job that makes a difference.

You'll receive 100% guaranteed college tuition to any state of Illinois supported college and be eligible for up to \$6,000 in education assistance with the Montgomery GI Bill. And, during the course of your six-year enlistment, you'll also earn a minimum salary of \$11,000. Join the Illinois Army National Guard today! Call 344-6252

**ILLINOIS ARMY NATIONAL GUARD**  
344-6252  
1-800-OR-A-7-ARMY

**Americans At Their Best.**  
The Army National Guard is an Equal Opportunity Employer.



**Attention All Writers!**

If you love to write and you have an insatiable curiosity, your the perfect person for the job.

**Be A Reporter At The Prospectus.**

You'll Receive: \$.45-\$.65 per column inch when published; job and networking experience; scholarship, and material for your resume. Contact: Susan Herrel, Editor. Prospectus X155 351-2216

**PCTV Community Education Network, Cable Channel 8**

**TELECOURSE LESSONS:**

**WEDNESDAY, NOVEMBER 10**

- 5:00 p.m. Everyone's Channel: Public access TV
- 6:00 p.m. Parkland Community Band, Concert '93
- 7:00 p.m. Parkland Report & Calendar: Meet the Coaches
- 7:30 p.m. Red Herring Poets: Ray Olsen
- 8:00 p.m. H.S. Quiz Bowl: Ridgeview v. Rantoul
- 8:30 p.m. GED Reading: Ch.10, Science
- 9:00 p.m. GED Math: Ch.10: Percentage Revolution
- 9:30 p.m. GED Writing: Ch. 10, Review

**THURSDAY, NOVEMBER 11**

- 9:00 a.m. GOVERNMENT BY CONSENT
- 10:00 a.m. PSYCHOLOGY: HUMAN BEHAVIOR
- 11:00 a.m. BUSINESS FILE
- noon AMERICA IN PERSPECTIVE
- 1:00 p.m. SOCIOLOGICAL IMAGINATION
- 2:00 p.m. HUMANITIES THRU THE ARTS
- 3:00 p.m. THE MONEY PUZZLE
- 4:00 p.m. TAKING THE LEAD
- 5:00 p.m. BELIEFS AND BELIEVERS
- 6:00 p.m. BELIEF AND BELIEVERS
- 7:00 p.m. Growing Up With Down's Syndrome
- 8:00 p.m. H.S. Quiz Bowl: Blue Ridge Vs Ridgeview
- 8:30 p.m. Representations of Women of Color
- 9:30 p.m. Parkland Report & Calendar: Meet the Coaches

**FRIDAY, NOVEMBER 12**

- 9:00 a.m. BELIEF AND BELIEVERS
- 10:00 a.m. BELIEF AND BELIEVERS
- 11:00 a.m. HUMANITIES THRU THE ARTS
- noon AMERICA IN PERSPECTIVE
- 1:00 p.m. TAKING THE LEAD
- 2:00 p.m. PSYCHOLOGY: HUMAN BEHAVIOR
- 3:00 p.m. MONEY PUZZLE
- 4:00 p.m. SOCIOLOGICAL IMAGINATION
- 5:00 p.m. GOVERNMENT BY CONSENT
- 6:00 p.m. BUSINESS FILE
- 7:00 p.m. Even Children Have Problems: C.E.N. Community Forum
- 8:00 p.m. Representations of Women of Color
- 8:40 p.m. Parkland Playbill: Five Golden Rings
- 9:00 p.m. Parkland Community Band, Concert '93

**TELECOURSE LESSONS: WEEK NOVEMBER 15**

- BUS 101#12 The Environment: Business & the Law
- The Environment: Business & the Economy

- ECO 101#12 Karen Goes Political  
All of the People, All of the Time
- HIS 105#11 The Limits of Power/The Limits of Politics
- HUM 120#12 Sculpture: Elements of Dimensions  
Sculpture: Meaning Thru the Body's Form
- MGT 101#11 Financial Methods of Control  
Production/Operations Management
- PSY 101#12 Therapy Choices/Social Psychology
- POS 122#12 Individual Rights/First Amendment  
Freedoms
- REL 102#21 Social Dimension:  
New Religious Movements
- REL 102 #22 Social Dimension: Far Eastern Religions
- SOC 101 #12 Political System/Science & Technology

**MONDAY, NOVEMBER 15**

Unit 4 Schools, TBA

**TUESDAY, NOVEMBER 16**

- 9:00 a.m. ECO 101 #12 THE MONEY PUZZLE
- 10:00 a.m. HUM 120 #12 HUMANITIES THRU THE ARTS
- 11:00 a.m. HIS 105 #11 AMERICA IN PERSPECTIVE
- noon BUS 101 #12 BUSINESS FILE
- 1:00 p.m. SOC 101 #12 SOCIOLOGICAL IMAGINATION
- 2:00 p.m. PSY 101#12 PSYCHOLOGY: HUMAN BEHAVIOR
- 3:00 p.m. POS 122 #12 GOVERNMENT BY CONSENT
- 4:00 p.m. MGT 101 #11 TAKING THE LEAD
- 7:30 p.m. Urbana School Board Meeting, live

**WEDNESDAY, NOVEMBER 17**

- 6:00 p.m. Parkland Report & Calendar: Meet the Coaches
- 6:30 p.m. Parkland Community Band, Concert '93
- 7:30 p.m. Parkland Playbill: Five Golden Rings
- 8:00 p.m. H.S. Quiz Bowl: Blue Ridge Vs Oakwood
- 8:30 p.m. GED Reading: Ch.11, Science
- 9:00 p.m. GED Math, Ch.11, Signed Numbers
- 9:30 p.m. GED Writing: Ch.11, Test Taking Tips

**THURSDAY, NOVEMBER 18**

- 9:00 a.m. GOVERNMENT BY CONSENT
- 10:00 a.m. PSYCHOLOGY: HUMAN BEHAVIOR
- 11:00 a.m. BUSINESS FILE
- noon AMERICA IN PERSPECTIVE
- 1:00 p.m. SOCIOLOGICAL IMAGINATION
- 2:00 p.m. HUMANITIES THROUGH THE ARTS
- 3:00 p.m. THE MONEY PUZZLE

- 4:00 p.m. TAKING THE LEAD
- 5:00 p.m. BELIEFS AND BELIEVERS
- 6:00 p.m. BELIEFS AND BELIEVERS
- 7:00 p.m. Even Kids Have Problems: C.E.N. Community Forum
- 8:00 p.m. H.S. Quiz Bowl: Oakwood Vs Ridgeview
- 8:30 p.m. Representations of Women of Color
- 9:00 p.m. Parkland Report and Calendar: Meet the Coaches

**FRIDAY, NOVEMBER 19**

- 9:00 a.m. BELIEFS AND BELIEVERS
- 10:00 a.m. BELIEFS AND BELIEVERS
- 11:00 a.m. HUMANITIES THROUGH THE ARTS
- noon AMERICA IN PERSPECTIVE
- 1:00 p.m. TAKING THE LEAD
- 2:00 p.m. PSYCHOLOGY: HUMAN BEHAVIOR
- 3:00 p.m. MONEY PUZZLE
- 4:00 p.m. SOCIOLOGICAL IMAGINATION
- 5:00 p.m. GOVERNMENT BY CONSENT
- 6:00 p.m. BUSINESS FILE
- 7:00 p.m. Parkland Report and Calendar: Meet the Coaches
- 7:30 p.m. Breaking Thru the Myths of Mental Illness: C.E.N. Community Forum
- 8:30 p.m. Everyone's Channel: Public Access TV
- 9:30 p.m. Parkland Playbill: Five Golden Rings

**NO TELECOURSES THIS WEEK**

**MONDAY, NOVEMBER 22**

- 7:00 p.m. Jazz Reunion 1: Centennial High School Big Band performs with Parkland

**TUESDAY, NOVEMBER 23**

- 6:00 p.m. Standards for All: A Vision for Education in the 21st Century (Goals 2000)
- 7:00 p.m. How Technology Can Transform The Way Students Learn (Goals 2000)

**WEDNESDAY, NOVEMBER 24**

- 6:00 p.m. Parkland Community Band, Concert '93
- 7:00 p.m. Even Kids Have Problems: C.E.N. Community Forum
- 8:00 p.m. H.S. Quiz Bowl: Oakwood Vs Ridgeview
- 8:30 p.m. GED Reading: Ch 12, "Science"
- 9:00 p.m. GED Math: Ch 12, Signed Numbers
- 9:30 p.m. GED Writing: Ch1, Spelling

**NOVEMBER 25 HAPPY THANKSGIVING**



**Dave**  
by David Miller



**LATE NIGHT HOURS**  
**FOR LATE NIGHT ARTISTS** MON-THUR  
OPEN TIL 9

art coop coupon

**25% OFF** the regular price of  
ANY ONE SINGLE ITEM  
GOOD THRU 11/24/93

**NEW STORE NEW HOURS**  
**SAME PRICES SAME OLD PEOPLE**

**the art coop**

410 E. GREEN (IN THE SKYLIGHT COURT) CHAMPAIGN  
CUSTOMER PARKING UNDER BUILDING