

# Prospectus

Volume 27 Issue 9

Parkland College Student Newspaper

Wednesday, Nov. 24, 1993

## Campus to be smoke free?

by Susan Herrel  
Editor-in-Chief

Parkland's Board of Trustees will be voting at the Dec. 15 meeting on a change in the current policy on smoking.

The Parkland College Association has recommended the following revised policy:

"In accordance with the State of Illinois Public Act 86-1018, the Illinois Clean Indoor Air Act (effective July 1, 1990), smoking is prohibited in all College buildings, entrances to buildings, and College vehicles, except in designated external entrances. Smoking material receptacles will be located only at entrances designated as external smoking areas; all other entrances will be nonsmoking to avoid air-intake contamination."

Dale Ewen, vice president/ Academic Services, said the main changes in the new policy will be concerning the smoking lounge which will be eliminated with the new proposal.

"There will be at least one entrance per wing which will be non-smoking," said

Ewen. "There will be no smoking lounge, and faculty and staff offices will be non-smoking also."

According to Ewen, smoking has been an issue for several years, both for students, faculty and staff.

Sophomore Scott Miller, who has been a non-smoker for 14 years, said "I think it's great. I heard that smoke goes through a filtration system which filters the smoke back through the College."

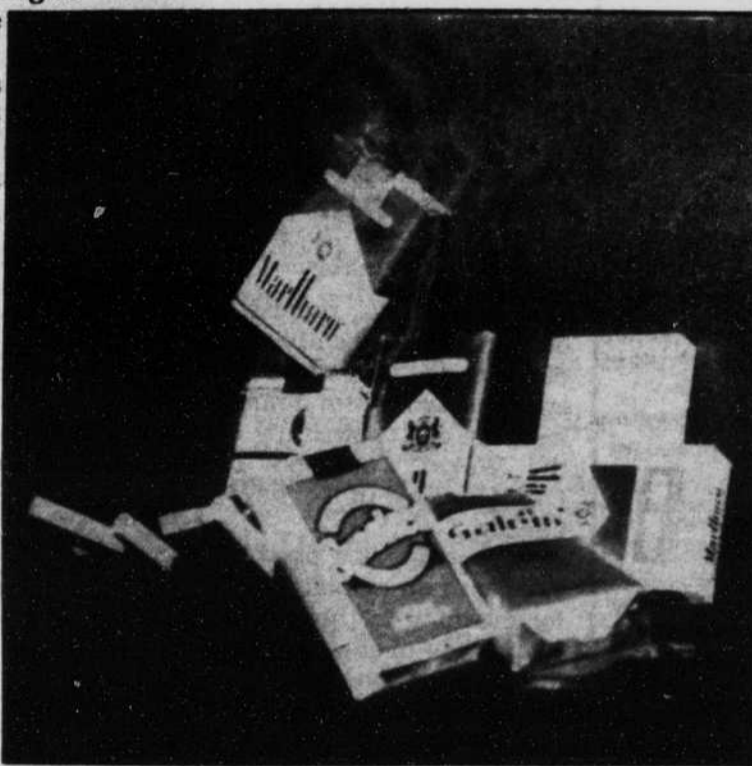
Charlotte Waltman, freshman, said, "There should be some place where we can smoke. We will be smoking in the bathrooms without some place to smoke legally."

Dave Wilderman, sophomore, said "I think it's a crock. I think they will lose students and faculty. People don't want to be pushed around. We (smokers) try to stay out of people's way. The few rights we have they try to take away."

"It is premature," said Ewen, "to discuss what will be done with the smoking lounge if the change in policy passes. It will have to be completely cleaned and repainted."

"I hope to see the room used to benefit all students."

If the Board passes the new policy at the Dec. 15 meeting, Ewen said he anticipated implementing it in January 1994.



## 'Time to Act!' theme of World AIDS Day

by J. Fleener  
Prospectus Staff Writer

"Time to Act!" is the theme on Dec 1, 1993, World AIDS Day. Previous observances have focused on public awareness of the disease as well as recognizing and remembering those who have fallen victim to its ravages. World AIDS Day 1993 will differ in that it is also a call to action. More and more people who thought that their lifestyle didn't place them at risk are finding out in the most horrifying of ways that they were misinformed — fatally misinformed.

The once common belief that the responsibility for awareness and prevention of AIDS falls only upon drug users and homosexual males is proving to be increasingly wrong. According to The American Association for World Health, the number of adolescents and heterosexual women who are being infected by HIV is growing at a faster rate than any other group. Research indicates that more than half of all newly infected adults in the year 2000 will be women.

World AIDS Day 1993 will launch an effort to create new HIV/AIDS pro-

grams throughout the U.S. as well as integrate the activities of existing organizations. To commemorate the event, the lights of the White House will be dimmed for 15 minutes. People are encouraged to demonstrate their awareness by also dimming their lights and placing lit candles in areas of visibility.

In conjunction with World AIDS Day, the U.S. Postal Service will issue an AIDS Awareness postage stamp. The stamp, which is a representation of the AIDS awareness red ribbon, will be available Dec. 1.

According to Regina Galer-Unti, a health educator for the Center for Health Information, there will be a World AIDS Day display in the case by the Welcome Center. On display will be two locally made AIDS quilts as well as information on HIV-AIDS prevention.

Also observed on Dec. 1 is the Day Without Art which acknowledges the impact that AIDS has had on art, music, film, and dance in the United States. The display in the College Center will emphasize the loss the art world has experienced as a result of AIDS deaths.

## PC gets emergency phones

By Jennifer Poisson  
Prospectus Staff Writer

Thirteen emergency phones have been installed throughout the exterior campus at Parkland, Doug Davis, director of Health, Safety, and Security, said last week.

The phones are directly connected with the Health, Safety, and Security office. Davis said the response time is less than a minute.

"It would be rare if it would take longer. Our response time in the building is around thirty seconds and we're always patrolling outside. We're here 24 hours a day, 365 days a year," Davis said.

There are two phones in the B-lot, one in both the M-lot and C-lots. There are nine phones at what Davis calls "heavy traffic" entrances.

People can activate the phones by pushing a single button and talking into a circular receiver.

"If you burned your hands, for instance, you can hit the button with your elbow," Davis said.

A display screen in the Health, Safety, and Security office shows which emergency phone the call is originating.

The phones located in the parking lots are tall, cylindrical kiosks. There is a light and an "emergency"

Phones located on the exterior walls of the building are of the same configuration.

"These are emergency phones. The fewer prank calls we have, the more time we have to pay attention to the real emergencies," Davis emphasizes.

A person who needs assistance with his or her vehicle can use the emergency phones, and a patrol officer will respond.

In addition to new outdoor lighting in the parking lots and at entrances, Davis said the emergency phones make him feel that Parkland has a safer environment.

## PC-Ford auto program in fall

by Tony Neagus  
Prospectus Staff Writer

Beginning in the fall of 1994, Parkland college will offer a new program in accordance with Ford Motor Company, called Automotive Student Service Educational Training (ASSET).

ASSET is a cooperative effort between Ford Customer Service Division, Ford and Lincoln-Mercury dealerships, and community colleges and technical schools throughout the country. Through the program, Ford's Customer Service Division

provides vehicles, equipment, and training for instructors; the dealerships sponsor the students, pay wages for the hands-on portions of the program, and provide other benefits; and Parkland provides the instructor, the equipment, classroom space, and confers the degrees.

The objective of the program is to ensure that Ford customers receive service for their vehicles from highly-trained technicians.

During their two years in the ASSET program, students will alternate between

classroom studies and work at their sponsoring dealerships.

Representatives of nine Ford and Lincoln-Mercury dealerships in Central Illinois attended a meeting with Parkland and Ford Customer Service Division personnel on Nov. 9 to learn more about the program and its benefits.

"With ASSET, technicians can finish the program and immediately start working for Ford. It will prepare them for the future world faster," said Rick Rudicil, Illini Lincoln-Mercury.



## News Briefs

### Nonverbal workshop

Parkland's Business Training Center will offer a workshop on Nonverbal Communication on Nov. 30 at Myna Thompson School, Rantoul.

Victoria Beals, part-time faculty member at Parkland, will give the presentation from 1:15 p.m. to 4:15 p.m. There is a registration fee. For more information: 217/893-1240

### Lifelong Learners

A defensive driving workshop for people over age 55 will be offered on Dec. 4 from 8:30 a.m. to 12:30 p.m.

Many insurance companies offer premium discounts for those who have completed this National Safety Council four-hour Defensive Driving Course. A certificate will be issued upon completion.

There is a fee for the course. Registration will be limited to 20 persons. For more information: 351-2544

### Emergency medical workshop

Dr. David S. Smith, retired Coast Guard commander and aquatic safety expert, will conduct a workshop for emergency medical service personnel from 8 a.m. to 5:30 p.m. Dec. 4 in room L 111.

The workshop, Winter Emergencies: Cold Water Drowning and Hypothermia, will focus on the causes prevention, and primary victims of hypothermia.

The registration fee includes a box lunch and refreshments. For more information: Joanne Huff, 217/351-2292

### Real estate seminar

A continuing education real estate seminar on anti-trust laws will be offered from 9 a.m. to noon Dec. 4 in C 118.

Eric Worner, part-time faculty member at Parkland and a real estate broker for the Worner Agency, will be the speaker.

The seminar meets the requirements mandated by the state for continuing education licensure. For more information: 217/351-2414

### Planetarium holiday

Rites of the Season, its annual holiday program, will begin the Staerkel Planetarium holiday season on Nov. 26 at 8 p.m. and on Saturdays at 1 and 8 p.m. through Dec. 18.

Also showing during December are *Fall Prairie Skies*, *Flower Planet*, and *The Little Star That Could*.

The Planetarium will continue to offer *Zeppelin: Flight to Middle-Earth* with the hard rock music of Led Zeppelin on Fridays and Saturdays at 9:30 p.m. The show's loud music and flashing lights are not recommended for young children.

For more information: 217/351-2446

### McCauley exhibit opens

Robert McCauley, professor and department chair at Rockford College, will exhibit his latest drawings and sculptures at the Parkland Art Gallery through Dec. 15. McCauley is the recipient of several fellowships from the National Endowment for the Arts and the Illinois Arts Council.

### UI makes changes in Social Work

The School of Social Work at the U. of I. is contemplating significant changes in the undergraduate program, according to Brad Hastings, director./Counseling.

He said Parkland students planning to transfer to the U. of I. School later than August, 1994, should immediately contact Kathy Frizzell (351-2210), Hastings (351-2364), or John Hede-man (351-7639) in the Counseling Center.

### Vitoux named to national board

Michael Vitoux, professor of Sociology, recently was elected to the national board of the Viktor Frankl Institute of Logotherapy at the World Congress of Logotherapy in Toronto, Canada.

Logotherapy is a psychology based on humans' need for meaning in their lives. Vitoux has been appointed to the education committee of the Mid-America Institute of Logotherapy in Kansas City.

### CAMPUS NOTES

The Inter-Organizational Council will be hosting a holiday program Dec. 8, 6:30 to 8:30 p.m. in the Gallery Lounge. Several student organizations will be sponsoring an evening of games and activities for children ages 3-12. Santa will be there! This event is open to the public at no charge.

The Astronomy Club, in conjunction with the Astronomical Club, will be holding an observation of the Lunar Eclipse Sunday Nov. 28 from 10:30 a.m. to 2:30 p.m. The Astronomy Club meets every other Tuesday at 11 a.m. to noon. To join, please contact Katrina Smith through the Astronomy Club box in Student Support Services or contact Carl Lorenz at M117 or through his phone mail 373-3703.

### Northrup receives national award

Kevin Northrup, vice president, Fiscal Services/Governmental Relations, has been named



Kevin Northrup

National Outstanding Business Officials.

Northrup, a native of Chillicothe, Ill., and a graduate of Bradley University and the University of

Illinois, received the honor during the organization's national convention Nov. 7-10 in Chicago.

Recently selected as the Outstanding Business Officer for Region VIII (Illinois and Wisconsin), Northrup was one of nine regional honorees eligible for the national award, which includes a \$1,000 scholarship donated in his name.

Selection for the award was based on effectiveness in carrying out responsibilities, participation in institution strategic planning, professional involvement in state national associations, and contributions to the community.

### SEASON'S GREETINGS FROM SAM'S CLUB

Because your company is a pre-qualified organization, arrangements have been made for you to receive this complimentary holiday pass to shop at SAM'S Club. From now until December 31, 1993 you can visit any SAM'S Club as often as you wish. Just present this card at the door and to the cashier when making a purchase by cash or Discover® card. You'll pay only 5% over the posted prices. Sorry check writing privileges are reserved for SAM'S Club members only. For only \$25 per year (plus tax where applicable) an eligible individual may become a member.

Club hours for passholders are:  
Noon to 8:30 P.M. Mon.-Fri. 9:30 A.M.-7:00 P.M. Sat.  
Noon to 6:00 P.M. Sun.

Hours may vary by location

### SAM'S CLUB HOLIDAY PASS

Name \_\_\_\_\_  
Address \_\_\_\_\_  
City \_\_\_\_\_ State \_\_\_\_\_ Zip \_\_\_\_\_  
Telephone Number \_\_\_\_\_  
Pass Number 176931723  
Expiration Date 12/31/93



### Driving Home For Break?



Find out if your car is safe—

Have PDR Automotive do a safety inspection.

Call 367-9481 or 1-800-442-4913 and schedule an appointment.

Performance Development Research

1008 N. Cunningham  
Urbana, IL

367-9481



### Prospectus

The *Prospectus* is published by students of Parkland College, 2400 W. Bradley Ave. Champaign, IL 61821-1899. Opinions expressed in editorials, letters to the editor, and unsolicited manuscripts are not necessarily those of the *Prospectus* or of Parkland College. Editorial offices are located in Room X-155. Phone numbers are 217/351-2216 and 351-2278. Advertising rates are available upon request. The *Prospectus* is distributed on the Parkland campus and throughout Champaign, Rantoul, Urbana, and high schools in District 505. The *Prospectus* is printed on 100 percent recycled newsprint, and has been designed as a Model Community Newspaper.

Editor, Susan Herrel  
Asst. Editor, Tina Henderson  
News Editor, Carol Lombardi  
Sports Editor, Alden Loury  
Photo Asst., Marci Eichelberger  
Advertising Mgr., Cari Calentine  
Advertising Reps., Kelly McCullough, Kari Fiala, Robb Walters, Jennifer Pritchett, & Lisa Fontana  
Production Mgr. (Ads), Randy Williams  
Production Staff, Anita Worley, Ellen Whitlock, Brian McElwain  
Circulation Mgr., Jennifer Polson  
Circulation Asst., Jayson Oskard  
Business Mgr., Susan Coontz  
Faculty Advisor, Doris Barr

### Publication Dates / Deadlines

Publication Date:  
Wednesday,  
Oct. 27, 1993

Advertising and Editorial Deadlines:  
Noon,  
Wednesday,  
Oct. 20, 1993

Staff Meetings:  
Every Tuesday  
at Noon  
in room X-155



## "How concerned do you think college students are about contracting AIDS?"



**Thomas Red Newton**

"Many are not concerned because they don't think it could happen to them. Also since they don't have the disease, they don't care."



**Aribania Cosey**

"I think that students are more concerned about sexually transmitted diseases today than when our parents were in school. But whether they actually take the necessary precautions goes back to whether or not their morals and values are really important to them or not."



**Scott G. Miller**

"I hope students today will take this issue on contracting AIDS very serious. I do believe that students of today are concerned about AIDS, and they are using safe sex."



**Brad J. Vizek**

"Initially not concerned until they think about it for a little while and realized the impact that the disease can and possible will affect them. Most people are aware of the disease but live in a dream world. Awareness is the first step. Being conscious of the disease and practicing safe sex is the next."



**David Bachtold**

"Half are not concerned and the other half are being concerned about the consequences of the virus."



**Zach Henderson**

"I don't think many people think about, at least when they are confronted with the decision."



**Amy DeWitt**

"I think students are very concerned, but I'm convinced they don't think it can happen to them. I know all my friends are aware and concerned, but for some reason people around here don't talk and act like it's a threat. With that attitude, they won't protect themselves."

## Letter to the Editor

To the Editor:

Recently, I witnessed a black woman laughing and smiling about a picture that she was showing her friend. This photo was printed in the News-Gazette, and depicted Ku Klan Klan member involved in a march, getting punched in the face by a black man.

I wondered about and proceeded to ask her if she thought that Martin Luther King Jr. would condone this behavior. She replied that KKK members give their children guns, and teach them to hate and kill people because of the color of their skin.

I wonder if her reaction would have been the same if the picture depicted a white man assaulting a Black Panther.

Based on her own logic, it would be the same, but reality presents us with different reactions by black leadership to the same reversed situations.

Case and point, the reactions of white and black

leaders to the Rodney King and Reginald Denny trials. When the police officers beat King with night sticks repeatedly until he was unconscious, and then some after, black and white leaders were in agreement that it was an awful and tragic situation.

Then Reginald Denny was pulled from his truck and beaten, kicked, and bashed in the head with a brick while his assaulters danced with glee.

Once again, white leaders condemned this behavior, but did people such as Jesse Jackson speak out against these men and label them the thugs and criminals that they are? No, instead we heard that they were overcharged and victims of white oppression.

America needs black leaders to preach non-violence. They need to tell the youth of today that human life is precious, and that the laws apply to everyone, black or white.

Martin Luther King Jr.

would not have approved of the way the white officers treated Rodney King, but neither would he approve of what Damian Williams and Henry Watson allegedly did to Reginald Denny.

In his letter from the Birmingham jail, King wrote, "I have earnestly opposed violent tension, but there is a type of constructive, nonviolent tension which is necessary for growth. Just as Socrates felt that it was necessary to create a tension in the mind so that individuals could rise from the bondage of myths and half-truths to the unfettered realm of creative analysis and objective appraisal, so must we see the need for nonviolent gadflies to create the kind of tension in society that will help men rise from the dark depths of prejudice and racism to the majestic heights of understanding and brotherhood."

Kenney Davenport  
Seymour, IL 61875

To the Editor,

I heard a rumor today. What was it? That smokers may lose the right to smoke on campus.

Before this issue is decided, I would like for non-smokers and decision makers who are going to try to take smokers' rights away from us to think about what I have to say, and answer the following questions and ideas honestly.

I realize that right now non-smokers wrinkle their noses whenever they see a group of smokers standing outside the entrances of the building practicing their right to smoke. If the right to smoke on campus is taken away, are the non-smokers ready to smell cigarette smoke every time they walk into a bathroom? Would you care to smell smoke in secluded areas of the building?

Even if a smoker's right to

smoke on campus is taken away, any dedicated smoker will find a way to smoke on campus. Trust me.

Have the people deciding on this issue thought about what the campus would be like with every smoker suffering from nic-fits?

I do envy people who haven't started smoking but, since I have been smoking for five years now, I can tell you that when I run out of cigarettes the only thing I can think about is getting my next cigarette. Are the decision makers prepared to take the responsibility for student smokers' grades falling because we can't concentrate for lack of a cigarette? Are the non-smoking students willing to deal with an instructor who can't smoke? A staff member?

I hope that this will give the non-smokers food for thought

before a decision is made on the smoking issue.

Melissa Vaughn  
Freshman

### Letter to the Editor Policy

The Prospectus welcomes letters to the editor concerning college-related issues.

Letters should be 350 words or less and should be signed by the author. The letter should also include the author's address and phone number. If necessary, letters will be edited according to length and space at the discretion of the editor.

Anonymous letters will not be printed.

**IMAGE 2000**

*presents...*

**A Bridal Package**

*Includes Bride, Maid of Honor & Bridesmaid*

**Consultation**

**Style**

**Manicure**

**Le' Image Make-Up Application**

**\$120.00**

*Any additional Bridesmaids \$40.00 each*

*Come see us December 5 at the bridal show sponsored by Michelle's Bridal Shoppe.*

*The Laborer's Union Hall*

*108 E. Anthony Urbana*

*Doors open at Noon.*





Photo courtesy of Don Manning

**Automotive receives car**

Worden-Martin, a Champaign car dealership, donated a Buick Park Avenue to the Parkland College Automotive Program. Pictured (l. to r.) Tim Buck, service technician with Worden-Martin and former Parkland student; Lane Eichhorn, Parkland automotive professor; Wayne Weber, partner at Worden-Martin; Dr. Zelema Harris, president of Parkland College; Dale Ewen, vice president for Academic and Student Services, and Michael Donovan, Parkland associate professor of Automotive Technology.

**Pres. Harris supports students**

**Students' rights questioned**

by Carol C. Lombardi  
News Editor

Parkland president Zelema Harris told the Parkland College Association on Nov. 18 that she plans to exclude students from the new grade appeal committee.

Harris stated that she "strongly supports" students being included in the grade appeal process, and that she believes it supports a "move toward democratization of the institution".

Despite Harris' statement, as well as similar statements by Dean of Student Services Carol Steinman, Student Advocate Jim Williams and Student Government President Phil Carter, PCA voted to table the issue.

Most of the faculty who participated in the discussion on the issue agreed with Sen. Joan Gary, instructor, who stated that "Grades are ours."

Steve Brown, PCA vice president, stated that "It is not a travesty if students are not included" in the grade appeal committee.

Other faculty members acknowledged that the issue was not quite that clear cut.

Martha Bowser-Kiener, who revised the policy, admitted that she felt "wishy-washy" about the issue.

She said that in nine grade appeals since April, students on the committees have "asked some of the most astute questions and made some of the best comments and observations."

In addition, she said, students have not always necessarily voted on the side of other students.

Despite these facts, she "does not like students having a vote" although she likes to have a student perspective.

She suggested the possibility of a student advisory vote as a possible compromise although she did not include that in the new policy.

Several Student Government members attended the meeting to speak in favor of retaining the student vote.

Lovanese Malone, Student Government senator, is "offended" by PCA's intention of excluding students, and feels that PCA is saying that "they don't care about students' opinions."

Lenore Allen, Student Government vice president, pointed out that the exclusion of students takes a learning process away from students. In addition, she pointed out that the current student advocate is a faculty member, not a student, and cannot represent student concerns as a peer.

Jewel Kelly, Student Government senator, proposed a compromise involving at least a student advisory vote. Felipe Foucher, Student Government, sees the problem as "miscommunication between faculty and students" and supports a student vote on the committee.

Prof. Donald M Nolen, Philosophy, summarized the options available: no

students on the committee; a student advisory position; a student vote, or a majority of students.

Since the system with one student vote has worked for the past five years, he sees no reason for concern at this point. If, in fact, as Bowser-Kiener stated, students are harder on students than faculty are, there is no reason to change the current policy, he said.

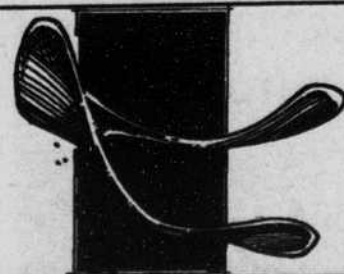
Another potential problem in the new policy is the recommendation that the grade appeal committee consist of faculty members from the same department as the faculty member whose grade is being appealed.

Lovanese Malone and Jewel Kelly, Student Government senators, raised the question of the possibility of bias under that system and encouraged the inclusion of faculty members from other departments.

Prof. Lou Snyder, Psychology, agrees that it would not necessarily be in the students' best interest to only have fellow faculty from the same discipline on the committee.

Snyder believes it is important to have someone ensure that committees are not "protectors of the accused" but does not believe that that role should be held by a student.

A motion was approved to remove the item from the agenda, which means that it will only be discussed again if someone brings it up.



Break a Leg!  
Good Luck  
On Your Finals.

**SPORTS TRIVIA**

Test your sports knowledge! Parkland's Intramural Department will conduct this Sports Trivia Contest for four weeks. Individuals may play 1-4 times. A \$20 gift certificate is awarded each time it runs. The overall winner will receive a \$100 gift certificate. Keep playing. Everyone has a chance to win the \$100. The answers to the last Sports Trivia Contest are written below, and followed by this issue's questions. Write your name, phone number, and answers in the space provided and place it in one of the intramural sign up boxes near X150 or X140 by November 30.

**Answers #2**

1. November 11, 1993
2. 69
3. Joe Carter
4. Football
5. 1994
6. 1992
7. Arnold Schwarzenegger
8. Football and Baseball
9. Coors Stadium
10. Hockey

**Questions #3**

1. What is Parkland Women's Basketball Coach Argie Johnson's middle name?
  2. How many games did a major league baseball club have scheduled in 1993?
  3. How many feathers does the Chicago Blackhawk's Indian sport in his hair?
  4. How many 20 second time-outs does a team get in each half of an NBA game?
  5. What NBA team has a nickname that does not end with an "S"?
  6. What kind of coin is most often tossed by NFL officials at the start of the game?
  7. What's baseball's hot corner?
  8. What are the four NFL teams that use birds for their nicknames?
  9. What baseball phenomenon has been dubbed Ryan's Express?
  10. What number is between 18 and 20 on a dart board?
- Tiebreaker: Predict the final score of the Lady Cobras basketball game against Walbash on December 1.

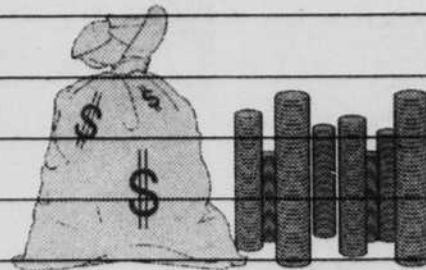


Name \_\_\_\_\_

Phone \_\_\_\_\_

Write Your Answers Here!

1. \_\_\_\_\_
2. \_\_\_\_\_
3. \_\_\_\_\_
4. \_\_\_\_\_
5. \_\_\_\_\_
6. \_\_\_\_\_
7. \_\_\_\_\_
8. \_\_\_\_\_
9. \_\_\_\_\_
10. \_\_\_\_\_





## Five Golden Rings to premiere at Parkland



Photo courtesy of Don Manning

### Parkland presents "Five Golden Rings."

"Five Golden Rings" cast members include (lt. to rt.) Mary Maville as (Dot) Peerybingle, Lenny Stagoski as John Peerybingle, and Deborah Mechtly-LeVeck as Tilly Slowboy.

by Ira Liebowitz  
Prospectus Staff Writer

The world premiere this December of *Five Golden Rings*, a musical adaptation of a Charles Dickens' holiday story promises to be a phenomenal treat for the entire family.

*Five Golden Rings*, set in England in 1845, is based on Dickens' *The Cricket on the Hearth*, whose characters include a loving couple and a small baby, an addle-brained nursemaid, and a toyshop owner who dislikes children.

Similar to the more popular *A Christmas Carol*, this one-act play features a toy-maker who is "a scrooge-like character with a sense of fun," according to director Randi Collins Hard.

Credentials alone of director, playwright, composer, and lyricist seem enough to

tantalize even the most reclusive prone to sitting by the hearth mumbling "bah humbug."

The music was composed by Tim Shirmer, part-time Parkland faculty member and musical director who holds a B.A. in Music Theory from St. Louis University and both the M. Mus. and D. M. A. in composition from the UI at Urbana.

Dr. Shirmer's achievements as composer during the past 20 years have spanned regional and national, including the PBS award-winning documentary *The Greatest Lakes, Portrait of a Prairie Capitol*, at the Old State Capitol in Springfield, two original musicals, *The Book of Dreams* and *Futures*, collaborated with Kirk Hard, and more than 15 scores for the Tony-nominated *American Players* in

Spring Green, Wis.

Randi Collins Hard, Theatre director, who holds a BS in Education Bucknell University and M. A. degree in theatre and M. F. A. in direction from the U of I, is no stranger to Parkland theatre nor to collaboration with Shirmer. This will be their tenth joint effort.

Hard has directed 30 plays and musicals including 11 world premieres. She also has served as managing director of the Springfield Theater Center, and organized the gala opening at the Parkland College Theatre in October 1987. Local audiences recall her productions including, *Futures*, *Chicago*, and *Man of La Mancha*.

Lyricists for *Five Golden Rings*, Cheri Coons' efforts include having written book and lyrics for *Beauty and the Beast*, produced in Chicago, as well as lyrics for *Phantom*.

Parkland students who perform in *Five Golden Rings* are: Gary Fairchild, Chad Livingston, Betsy Maville, Stephanie McIlwain Miller, Kim Underwood (cast) and Rachael Thomas (ensemble), Cynthia Aldridge, Gary Amber, Julie Barrett, Kevin Crum, Jason Healy, Mikel Mathews, Lenny Stagoski, Linda Van Polen and Mathew S. Wall.

Said Hard of the show, "This will be the first time it's ever been seen by anyone," adding that this family fare has "a lot of warmth, comedy, magic, mysticism and humor."

World Premiere Musical!

# Five Golden Rings


Music by Tim Schirmer ♦ Book and lyrics by Cheri Coons ♦ Original Musical Adaptation of Charles Dickens' "The Cricket on the Hearth"

**Holiday entertainment for all ages!**

December 3, 4, 9, 10, and 11, 1993 8 p.m.  
December 4, 5, 11, and 12, 1993 3 p.m.

**Parkland College Theatre**

\$8 General Admission ♦ \$7 Students/Seniors  
Thursday, December 9, tickets "2-for-1" ♦ Special "Family" tickets \$25

 Parkland College  
2400 West Bradley Avenue • Champaign, Illinois 61821-1899 • 217/351-2528

## MARKET PLACE STUDENT CHRISTMAS SHOPPING SPREE

Thurs., Dec. 2, 1993, 5-9:30 p.m.

- For Parkland College students, faculty, and staff.
- Bring your Parkland College ID to Market Place and Present it to participating stores. Pick up your money saving coupon sheets in center court and \$ave.
- Free MTD bus rides, from the Illini Union main stop, beginning at 4:30 p.m. to Market Place on the hour and half hour. Last bus leaves Market Place at 9:45 p.m.
- Drawings for prizes from Market Place stores. Plus a \$100 Market Place gift certificate.
- Gery & Al's Shoot-A-Thon in center court. Get your super discount coupons at the mall from participating stores.



Make It Yours For Great Shopping

Bergner's, JCPenney, Sears, Kohl's, and over 100 specialty stores, restaurants, cinemas, and services  
North Neil at 1-74 / Champaign, Illinois / (217) 356-2700

A FEW OF

# My favorite things



**What's Your Gender Communications Quotient (GCQ)?**

How much do you know about men and women communicate with one another? The 19 items in this questionnaire are based on research conducted in classrooms, private homes, businesses, offices, hospitals - the places where people commonly work and socialize. If you think a statement is generally an accurate description of female and male communication patterns, mark it true. If you think it's not an accurate description, mark it false.

1. Men talk more than women. T F
2. Men are more likely to interrupt women than they are to interrupt other men. T F
3. There are approximately ten times as many sexual terms for males as for females in the English language. T F
4. During conversations, women spend more time gazing at their partner than men do. T F
5. Nonverbal messages carry more weight than verbal messages. T F
6. Female managers communicate with more emotional openness and drama than male managers. T F
7. Men not only control the content of conversations, they also work harder in keeping conversations going. T F
8. When people hear generic words such as "mankind" and "he," they respond inclusively, indicating that the terms apply to both sexes. T F
9. Women are more likely to touch others than men are. T F
10. In classroom communications, male students receive more reprimands and criticism than female students. T F
11. Women are more likely than men to disclose information on intimate personal concerns. T F
12. Female speakers are more animated in their conversational style than are male speakers. T F
13. Women use less personal space than men. T F
14. When a male speaks, he is listened to more carefully than a female speaker, even when she makes the identical presentation. T F
15. In general, women speak in a more tentative style than do men. T F
16. Women are more likely to answer questions that are not addressed to them. T F
17. There is widespread sex segregation in schools, and it hinders effective classroom communication. T F
18. In classroom communications, teachers are more likely to give verbal praise to females than to male students. T F
19. In general, men smile more often than women. T F

© 1985, David & Myra Seather

The answers to the above GCQ quiz can be found on page 9 in this issue of the Parkland Prospectus.

**Multicultural education feared**

by Julie McDuffee  
Prospectus Staff Writer

Many people are afraid multicultural education will divide the U.S., James A. Banks, keynote speaker, told approximately 400 persons attending the multicultural conference at Parkland on Nov. 12.

He said, "It assumes we are united, but we are not. Multicultural education is about uniting a deeply divided nation." He warned that people should be careful not to become "encapsulated" by their own culture, but to explore beyond their own cultural "borders," or the perimeters of the world as they know it.

Quoting from *A World of Difference*, Banks told the story of a hangman that came to town and hung all the people of one group, and no one tried to stop him. The next day the hangman came to town and hung another group of people, still with no complaint from the



Korean drummers at Multicultural Conference

people not targeted. This continued day after day until no one was left in the town. Banks compared the town's reaction to that of people when discrimination is aimed at people from

other cultural backgrounds or gender. He called for all people to become involved, to act, to defend others of different backgrounds, saying, "No one is free until we are all free."

Banks advised educators in the audience not to ignore the multicultural aspects of their subjects. He compared not teaching black history because a class has no black students to not teaching medieval history because there are no medieval students.

Banks called for reform in teaching. He said to those who may not have paid attention to multiculturalism, "No matter how far you have gone down the wrong road, turn back."

Banks is a professor of Education and director of the Center for Multicultural Education, University of Washington and the author/editor of 15 books.

The conference, Getting Down to Business: Making Gender-Balanced, Multicultural Education a Reality in Illinois Schools, was sponsored by the Parkland College Committee on Access, Equity, and Cultural Diversity and the Office of Women's Programs and Services.



International dancers entertain at conference.

by Carol C. Lombardi  
News Editor

Twenty-five years ago, sexism did not even have a name. Myra Sadker's first book, *Sexism in School and Society*, ended up being carried in adult bookstores because buyers misconstrued the meaning of the word, "sexism."

Myra and David Sadker used a quiz to illustrate some misconceptions that hinder inter-gender communication.

For example, women stereotypically are seen as talking much more than men, they said, although the majority of research shows that men, particularly in mixed-gender settings, talk more.

The difference between saying "mankind" and "humankind" is often regarded as just a matter of semantics, the speakers said.

However, they pointed out that research repeatedly has shown that when asked to draw or illustrate books about "cavemen" and "cave people" or "urban man and "urban society,"

the term with "man" in it resulted in subjects drawing pictures of men, while the gender neutral terms resulted in pictures of men, women, and children. This finding held true with both children and adults.

A third example involved the use of touch by men and women. Women are often perceived as being more physical and likely to touch, the speakers said.

In fact, the Sadkers said, men are more likely to touch someone during a conversation than are women. They explained that when men touch women, it can be perceived as expressing power,

protection, affection, friendship, or sexual intent. When women touch men, it is most often interpreted as an expression of sexual intent, they said.

The Sadkers concluded by presenting statistics showing the cumulative result of sexism in the classroom.

The statistics paint a picture of the journey of males and females from kindergarten throughout their formal education.

In kindergarten and first grade, when standardized tests are administered, girls are ahead in every subject except for science.

Subsequently, children

male students received more attention, both positive and negative, than do female students. It also showed that in classroom discussions, teachers are more likely to "coach" boys to answer questions and to explain incorrect answers to boys.

The studies also show that female students are praised most often for appearances either of their work or of themselves.

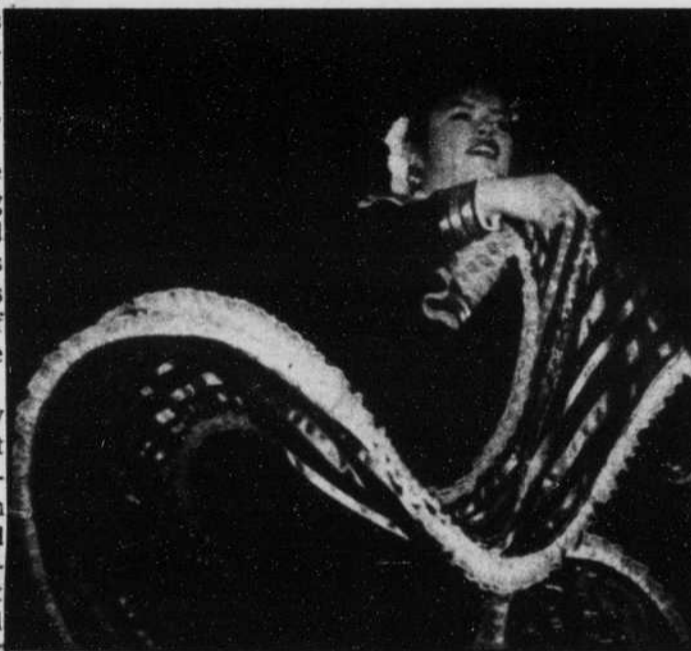
However, male students are punished more frequently, more publicly and more harshly, the studies show.

By the time students graduate from high school, boys are ahead in nearly every subject, and outscore girls on college admissions tests.

Once they are in college, white male students receive the largest percentage of teacher attention during class time, followed by black males, white females, and black females, according to the speakers.

By the end of college, males outscore females on graduate school admission tests like the GRE, MAT, and LSAT, and the differences in the scores are even more pronounced than on the college admission tests.

The cycle is completed, the Sadkers said, when the order of salary distribution among working Americans parallels the order in which college students receive teacher attention: white males, black males, white females and black females.



Dancer at Los Amigos event

**'Teach for a change'**

by Carol C. Lombardi  
News Editor

Patricia Hill-Collins is engaged in "an ongoing struggle to regain her voice," and challenged the audience at her Nov. 12 lecture to help others who have been silenced to do the same.

She spoke about

Engaging the students in a discussion about how they actually viewed their community, she began to realize that she could "teach the status quo or teach for a change".

Empowerment is a term that, according to Hill-Collins, makes people nervous, but changing the



Keynote speaker Patricia Hill-Collins

"Teaching for a Change" at Parkland's conference on multi-cultural and gender-balanced education.

Hill-Collins advocates recognizing silencing vs. empowerment in the curriculum; centering change based on people, and self-defining as a means to empowerment of traditionally silenced people.

Hill-Collins opened with an illustrative story about the community education curriculum she was required to teach to a class of African-American second graders.

The curriculum showed only white, middle class people, who lived in single-family homes with two-parent families, a situation foreign to most of her students.

curriculum should be focused on empowering everyone who is affected by it.

She encouraged people to expand their views of multicultural education to include the empowerment of all groups that have been silenced by traditionally narrow curricula.


"Black people yelled the loudest and yelled first," she said, but many other groups have been silenced.

People have been excluded from the curriculum based on race, class, sex, privilege, sexual orientation, and disability, according to Hill-Collins.

Hill-Collins said "Educators must learn to teach for a change because there is too much at stake not to."

**Let's change the meaning of "tie one on..."**

**PROJECT RED RIBBON**  
15 November 1993—1 January 1994



**Mothers Against Drunk Driving**  
**Champaign County Chapter**  
Tie a red ribbon to a visible location on your vehicle as a reminder to drive sober this holiday season and throughout the year. The life you save may be your own!

For **FREE** red ribbons call 356-6233

Bring This Ad In And Receive 10% Off

**Troy's Uniforms**  
108 W. Main  
Urbana  
367-3701  
9-5 Mon.-Fri.  
9-4 Sat.



Expires Jan. 31, 1994

**Oil Change? Think Fast.**

**Fast Lube**

"Our Name Says It All"

**CHAMPAIGN**  
1301 N. MATTIS  
355-1014

MONDAY-FRIDAY.....8 AM - 7 PM  
SATURDAY.....8 AM - 6 PM

No Appointment Necessary.

**OIL CHANGE PLUS LUBE**

Drive thru oil change, filter & lube. No appointment and in approximately 10 minutes.

Includes:  
•Up to 5 qts. of oil, 10W-30, 10W-40 •Oil Filter  
•Lube Chassis •Check and Fill All Fluid Levels  
•Clean Outside Windows •Vacuum Interior  
•Check Air Filter and Wiper Blades  
•Check & Inflate Tires

**\$18.99\***  
Reg. \$23.99

All work guaranteed. Coupon must be presented at time of service. \*Most cars, plus tax. Not valid with other offers. OFFER EXPIRES 12/1/93

---

**FREE OIL CHANGE & LUBE WITH RADIATOR SERVICE**

Oil Change includes:  
•Up to 5 qts. of oil, 10W-30, 10W-40 •Oil Filter  
•Lube Chassis •Check and Fill All Fluid Levels  
•Clean Outside Windows •Vacuum Interior  
•Check Air Filter and Wiper Blades  
Radiator Service includes:  
•Drain System Coolant, Refill System with Coolant, Pressure Test System, Inspect Cap & Hoses.

**\$39.99\***  
Reg. \$58.98

All work guaranteed. Coupon must be presented at time of service. \*Most cars, plus tax. Not valid with other offers. OFFER EXPIRES 12/1/93

---

**OIL CHANGE & LUBE PLUS TRANSMISSION SERVICE**

Oil Change includes:  
•Up to 5 qts. of oil, 10W-30, 10W-40 •Oil Filter  
•Lube Chassis •Check and Fill All Fluid Levels  
•Clean Outside Windows •Vacuum Interior  
•Check Air Filter and Wiper Blades  
Transmission Service includes:  
•Replace Filter, Gasket and Fluid.

**\$49.99\***  
Reg. \$63.98

All work guaranteed. Coupon must be presented at time of service. \*Most cars, plus tax. Not valid with other offers. OFFER EXPIRES 12/1/93



# Cartoons



**Dave**  
by David Miller

**off the mark** by Mark Parisi

**PCTV**  
Cable Channel 9

**TELECOURSE LESSONS: WEEK NOVEMBER 29**

- BUS 101#13 The Environment: Business & Social Responsibility
- The Challenge of High Technology & Communication
- ECO 101#13 Slipping Away/ A Steep & Thorny Path
- HIS 105#12 The Conservative Resurgence/An Era of Excess
- HUM 120#13 Sculpture: Most Difficult of Arts
- Architecture: Evolving Skyline
- MGT 101#12 Information Systems Management (#21)
- Competitive Management: Managing for Productivity
- PSY 101#13 Conformity, Obedience, and Dissent
- Issues in Psychology
- POS 122#13 Rights of the Accused/Women & Minorities
- REL 102#23 Social Dimension: Far Eastern Religions
- REL 102 #24 Social Dimension: Far Eastern Religions
- SOC 101 #13 Summary and Review

**MONDAY, NOVEMBER 29**  
Unit 4 Schools,

**TUESDAY, NOVEMBER 30**

- 9:00 a.m. THE MONEY PUZZLE
- 10:00 a.m. HUMANITIES THRU THE ARTS
- 11:00 a.m. AMERICA IN PERSPECTIVE
- noon BUSINESS FILE
- 1:00 p.m. SOCIOLOGICAL IMAGINATION
- 2:00 p.m. PSYCHOLOGY: HUMAN BEHAVIOR
- 3:00 p.m. GOVERNMENT BY CONSENT
- 4:00 p.m. TAKING THE LEAD

**WEDNESDAY, DECEMBER 1**

- 6:00 p.m. Parkland Report & Calendar: Meet the Coaches
- 6:30 p.m. Parkland Playbill: Five Golden Rings
- 7:30 p.m. Parkland Community Band, Concert '93
- 8:00 p.m. H.S. Quiz Bowl: Oakwoods vs Ridgeview
- 8:30 p.m. GED Reading: Ch.13 Social Studies
- 9:00 p.m. GED Math, Ch.13, Geometry
- 9:30 p.m. GED Writing: Ch.2, Mechanics

**THURSDAY, DECEMBER 2**

- 9:00 a.m. GOVERNMENT BY CONSENT
- 10:00 a.m. PSYCHOLOGY: HUMAN BEHAVIOR
- 11:00 a.m. BUSINESS FILE
- noon AMERICA IN PERSPECTIVE
- 1:00 p.m. SOCIOLOGICAL IMAGINATION
- 2:00 p.m. HUMANITIES THROUGH THE ARTS
- 3:00 p.m. THE MONEY PUZZLE
- 4:00 p.m. TAKING THE LEAD
- 5:00 p.m. BELIEFS AND BELIEVERS
- 6:00 p.m. BELIEFS AND BELIEVERS
- 7:00 p.m. Representations of Women of Color
- 8:00 p.m. H.S. Quiz Bowl Blue Ridge vs Ridgeview
- 8:30 p.m. TBA

**Final exam times for daytime courses**

- Monday at 7 a.m. .... 8-10 a.m., Friday, December 17
- Monday at 8 a.m. .... 8-10 a.m., Thursday, December 16
- Monday at 9 a.m. .... 8-10 a.m., Monday, December 20
- Monday at 10 a.m. .... 8-10 a.m., Tuesday, December 21
- Monday at 11 a.m. .... 11 a.m.-1 p.m., Thursday, December 16
- Monday at 12 noon .... 11 a.m.-1 p.m., Monday, December 20
- Monday at 1 p.m. .... 11 a.m.-1 p.m., Friday, December 17
- Monday at 2 p.m. .... 2-4 p.m., Friday, December 17
- Monday at 3 p.m. .... 2-4 p.m., Thursday, December 16
- Monday at 4 p.m. .... 2-4 p.m., Thursday, December 16
- Tuesday at 7 a.m. .... 8-10 a.m., Thursday, December 16
- Tuesday at 8 a.m. .... 8-10 a.m., Friday, December 17
- Tuesday at 9 a.m. .... 8-10 a.m., Wednesday, December 22
- Tuesday at 10 a.m. .... 8-10 a.m., Wednesday, December 22
- Tuesday at 11 a.m. .... 11 a.m.-1 p.m., Tuesday, December 21
- Tuesday at 12 noon ... 11 a.m.-1 p.m., Wednesday, December 22
- Tuesday at 1 p.m. .... 2-4 p.m., Monday, December 20
- Tuesday at 2 p.m. .... 2-4 p.m., Tuesday, December 21
- Tuesday at 3 p.m. .... 2-4 p.m., Monday, December 20
- Anytime after Tuesday .... 2-4 p.m., Wednesday, December 22

**PREGNANT?**  
We can help you!

- FREE pregnancy testing.
- CONFIDENTIAL Counseling.

**BIRTHRIGHT** 110 1/2 N. Neil St.  
Champaign, IL

**351-7744 or 1-800-550-4900**

Hours: Mon. 10am-1pm Tue.-Sat. 10am-1pm  
Walk in or by appointment. (Above Lax Stock n' Bagel)



**LATE NIGHT HOURS**  
**FOR LATE NIGHT ARTISTS** MON-THUR  
OPEN TIL 9

art coop coupon

**25% OFF** the regular price of

ANY SINGLE PURCHASE

GOOD 11/26,27,28/93

AFTER THANKSGIVING SPECIAL  
3 DAYS ONLY

**the art coop**

410 E. GREEN (IN THE SKYLIGHT COURT) CHAMPAIGN  
CUSTOMER PARKING UNDER BUILDING



**Directory**

- Announcements
- Automobiles
- Business Services
- Help Wanted
- Insurance
- Lost And Found
- Pets
- For Rent
- Roommate Wanted
- Rooms For Rent
- Sublets
- Travel
- Wanted To Buy
- Wanted
- Personals
- For Sale

**Help Wanted**

If your a curious person who just has to know what's happening and likes to write, too, come to a Prospectus staff meetings held each Tuesday at noon in X155. You'll be paid \$.45-.65 per column inch when published. You must be able to write objectively. If you can't come to the meeting, just stop by... tfn

**Help Wanted**

**Beach or Ski Group Promote.** Small or larger groups. Yours Free, discounted or Cash. Call CMI 1-800-423-5264. ....11/24

**ALASKA SUMMER EMPLOYMENT - fisheries.** Many earn \$2,000+/mo. in canneries or \$3,000-\$6,000+/mo. on fishing vessels. Many employers provide benefits. **No exp. necessary!** Get the necessary head start on next summer. For more info, call: 1-206-545-4155 ext. A5734. ....12/8

**CRUISE SHIPS NOW HIRING—**Earn up to \$2,000 +/month working on Cruise Ships or Land-Tour companies. World travel. Summer and Full-Time employment available. No experience necessary. For more information call 1-206-634-0468 ext. C5734. ....12/8

**For Rent**

Female roommate need to share a three bedroom house. \$250 covers everything except your long distance calls. 367-8938. Ask for McKenzie. ....11/24

**COUNTRY FAIR APARTMENTS**  
MONEY SAVING RATES  
HEAT, WATER, GAS,  
SATELLITE TV, REFUSE,  
AND SEWAGE PAID

- Large 1 & 2 Bedroom
- Furnished or Unfurnished
- Frost-free GE refrigerator
- GE electric range w/ self-clean oven
- Lots of spacious closets
- Hassle-free laundry each bldg.
- 24-hour, on-site, management/maintenance service
- Pool, BBQ, tennis, basketball, and playgrounds
- Free lighted parking
- Walk to shopping, restaurants, and theater
- On MTD bus line
- Flexible lease terms
- One small pet welcome with deposit

389-3713 2106 W. White, C  
Weekdays 9-5:30, Saturday 9-12  
No appointment necessary to view model apartment

**For Rent**

**BARR REAL ESTATE**

We have campus and off-campus units ranging from 1 to 4 bedrooms, either furnished or unfurnished. Call us about renting now.

Call  
356-1873

**Insurance**

**INSURANCE**

IT'S THE LAW—AUTO INSURANCE  
Pay as you drive, monthly payments.  
BRYA INSURANCE  
355-5555  
at Firestone Country Fair  
..... 5/4/94

**For Sale**


Free Trips And Money!!  
Individuals and Student Organizations wanted to promote the Hottest Spring Break Destinations, call the nation's leader. Inter-Campus Programs 1-800-327-6013.  
.....12/8

**Business Services**

Word processing for term papers, theses, resumes, letters, etc. — laser printed. Call 832-9693. ....12/8

Infant care, evenings: \$3.00 per hour. Donna 352-4038. Children age 2 and older: \$2.50 per hour. My home, close to Parkland. ....12/8

**Who Can Give You The Kind Of News That's Indepth?**



**NO**  
Think Again!

Only the Prospectus can do that.  
Read the Parkland College Prospectus.

**Always The Last One To Know?**

Stay up to date with the latest News, Entertainment and Sports.

The Parkland College Prospectus

Don't Be Left Out.

**352-7910**

**DUPLEX LIVING FROM \$319**

NEAR THE NEW WALMART AND SAMS CLUB STORES

CARPETED, CENTRAL AIR, DISPOSAL, W/D HOOD-UPS, FURNISHED OR UNFURNISHED

NO CHARGE FOR MOST PETS!

2 BDRM DUPLEX	FROM \$319
2 BDRM W/ GARAGE	FROM \$399
3 BDRM DUPLEX	FROM \$399
3 BDRM W/ GARAGE	FROM \$439

Garbage Pick-up Included. Appliances & Furniture Available.

Mon.-Fri. 9am-6pm Sat. 10am-6pm  
Office at: 510 S. 4th C.

Your Support of Our Advertisers is Greatly Appreciated.

**Announcements**

**The Sold Ad ✓**

The Prospectus will run your ad for 1 semester (4 months) or until you find a buyer! 15 words: \$8.25. 20 words: \$11.00. Available to non-commercial individuals only. 3 priced items max. No changes may be made. \*Your ad will be canceled at the end of the semester if a buyer is not found. Sorry, no refunds. Regular price would be \$16.50-\$24.50. Prepay your ad in X156.

**Personals**

**Holiday Reservations**

Send a special message to a special person this holiday season. The Prospectus will design your own holiday classified ads for the price of regular classified ads. Come to room X155 or mail the handy ad form on this page with your payment. Place your personal classified ads in the December 8th edition of the Parkland College Prospectus. ....12/8

**Classified Ad Rates**

1-35 Words: Students (With Parkland ID) \$2.50; Non Students \$3.50 Each Additional Word: \$.10. Border: \$2.00. Words in Bold \$.50. Words in Caps: \$.50. Ad Copy Centered: \$2.00. Classified Ads Must Be Paid In Advance. Pay Cash or Check to Parkland College. Mail to Prospectus Classified, X155, Parkland College, 2400 W. Bradley Ave., Champaign, IL 61821. Deadline: 3 Business Days Before Publication. The Prospectus is Published Biweekly in the Fall, Summer, and Spring Semesters.

**Classified Ad Rates**

1-35 Words: Students (With Parkland ID) \$2.50; Non Students \$3.50 Each Additional Word: \$.10. Border: \$2.00. Words in Bold \$.50. Words in Caps: \$.50. Ad Copy Centered: \$2.00. Classified Ads Must Be Paid In Advance. Pay Cash or Check to Parkland College. Mail to Prospectus Classified, X155, Parkland College, 2400 W. Bradley Ave., Champaign, IL 61821. Deadline: 3 Business Days Before Publication. The Prospectus is Published Biweekly in the Fall, Summer, and Spring Semesters.

**Classified Ad Form**

Name: \_\_\_\_\_

Address: \_\_\_\_\_

Phone: \_\_\_\_\_ Student: Yes  No

Dates to Run: \_\_\_\_\_

Ad to Read: \_\_\_\_\_

Under Classification of: \_\_\_\_\_

\$2.50 Students or \$3.50 Non Students for 1-35 Words. All Ads Must be Prepaid. Make Checks Payable to Parkland College. Tearsheets Will be Sent if a Self-Addressed Stamped Envelope is Enclosed.



**THOUGHT ABOUT THE HOLIDAYS? WE HAVE!!!**

- Want to earn extra money for those special Christmas gifts?
- Kids in school?
- Retired, but not content with sitting at home?
- Looking for a part-time job between classes?

If you answered "Yes" to any of these questions, then come to K's for the Holidays! We need temporary help for the holiday season! K's now has openings in the following areas:

• Fine Jewelry	• Furniture
• Customer Service	• Cashiers
• Electronics	• Toys
• Sporting Goods/ Gun Counter	• Warehouse
• Greeters	• Clerical
	• Housewares

We pay **BASE + COMMISSION + BONUS** for all sales positions!  
If you are an outgoing person who enjoys serving the public ...

**APPLY IN PERSON**  
Mon., Wed., & Fri. 10:00 a.m.-7:30 p.m.  
Tue. & Thur. 10:00 a.m.-9:00 p.m.  
1307 N. Mattis Ave. Champaign, Illinois

— No Calls Please —  
Equal Opportunity Employer

**K's Merchandise**  
A Division of K's Advertising

**MERLE NORMAN & MORE**

Hair • Face • Nails

- Fashions
- Accessories

**OLD FARM SHOPS CHAMPAIGN**  
359-8100

**SINCERELY Sherry**

Exciting Looks in LADIES & MATERNITY Apparel at Affordable Prices!

**359-8388**

Answers to the GCQ quiz from page 6.

1. True	10. True
2. True	11. True
3. False	12. True
4. True	13. True
5. True	14. True
6. False	15. True
7. False	16. False
8. False	17. True
9. False	18. False
	19. False

© 1985, David & Myra Sadler



Under Classification of: \_\_\_\_\_

\$2.50 Students or \$3.50 Non Students for 1-35 Words. All Ads Must be Prepaid. Make Checks Payable to Parkland College. Tearsheets Will be Sent if a Self-Addressed Stamped Envelope is Enclosed.

**WORLD-WIDE GIFTS**

- Lots of stocking stuffers • Great Gifts • Hand Knit Sweaters
- Jewelry • Hand Carved Wooden Items • Soapstone
- Onyx • Brass Candle Holders • Jute Items • Unique Toys
- Bags Galore • Coin Purses • One-of-Kind Jewelry
- Nativity Sets from Around the World

105 N. Walnut  
Downtown Champaign  
352-8200

Holiday Hours: 10:00 a.m. - 6:00 p.m. Mon. - Sat.  
Friday Til 7:00 p.m. Closed Sunday

31 Days Until Winter Break





**Cobras perfect in their first five**

by Alden Loury  
Sports Editor

Mark Bial couldn't have begun for a more perfect season to his first year as the men's basketball coach at Parkland. Bial has brought his fast-paced style and four-year school experience and has coached the junior college to a perfect, 5-0 start.

The multi-dimensional Cobras have hit their early season foes hard from many directions with several weapons.

The Cobras have averaged better than 100 points a contest in establishing their unblemished record.

The scoring punch is a direct result from the Cobras aggressive defensive style, Bial said. The Cobras have caused the opponents fits with pressure and quick hands which in turn leads to steals and easy fastbreak buckets.

Parkland opened its season at the Lake County Tournament in Grayslake. On the first night the Cobras ran away from Truman College in the second half, opening up a 9-point halftime lead to a 107-74 victory. Chato Taylor and Thomas Newton provided big scoring games

with 23 and 20 points, respectively.

Parkland wrapped up a successful weekend in Grayslake with a sweep of its two games on Saturday, November 13. After blowing out the host Lake County squad 89-54, the Cobras did away with Highland 112-93 to win the tourney and covet its most valuable player, Wayman Upshaw.

The Cobra freshman out of East Chicago Central High School demonstrated his all-around game. Upshaw scored in double figures in all three games including a 28-point performance (on 11-17 shooting) and clearing 12 boards versus Highland. He also played the part of a master thief by getting 8 steals in one game and 5 in another.

The exciting 6'4 off-guard saved his best performance for the Cobras 112-93 win over Lincoln Land. In that game Upshaw scored 33 points.

The Cobras returned home on Saturday, November 20 for a match-up with Illinois Valley CC. Perhaps as a testament to the Cobras depth, reserve guard Marty Luxmore went nuts, canning 4 of 8 attempts from the three-point

line en route to a 31-point performance. The Cobras won the contest 95-81. The 14-point difference was their slimmest margin of victory this season.

Coach Bial says everyone has contributed to the team's success.

Kirk Glinborg has been steady at the point guard position, scoring in double-digits in three of five games and contributing on the boards as well.

Tony Batchelor and Kevin Walsh have been exactly what Bial hoped they would be, physical. The rotating centers have helped Parkland stay strong inside. In the victory over Lake County both players snatched 13 rebounds each.

Taylor and Newton have delivered fine performances at times also.

Bial doesn't want his team to get to happy about its quick start. "Five games is not much when you consider we play a 30-game season," Bial said. "If we were, maybe, 25-0 then I think they [the players] would have something to be excited about."

If the Cobras can sustain their defensive intensity over the next 20 games they just may have something to be excited about.

**ATHLETE OF THE MONTH**

October

Cobra golfer Kyle Bauer was named Parkland's Athlete of the Month for October.

**COBRA  
SPORTS  
SHORTS**

Bauer, a freshman from Cissna Park High School, qualified for the NJCAA tournament next June. He finished seventh overall at the Region 24 tournament on Oct. 15-16 to clinch a berth in the national tournament. Bauer led the Cobras this season in scoring by averaging 77.2

strokes per round. His best performance came at the Spoon River Invite on Aug. 25. Bauer shot a season-low 73 and finished second overall. He was the lowest Parkland scorer in five of the team's eight outings.

**INTRAMURAL**

**Basketball**

**FALL 5-ON-5 LEAGUE**

**Standings**

The Heels (2-0), SPA (1-0), Strange Brew (1-0), Mixed Nuts (0-1), The Al-Stars (0-1), The Bulls (0-2).

**4-ON-4 TOURNAMENT**

**Champions**

The Heels: Michael Gatlin, Aaron Weatherspoon, Kalvin Manning and Antoine Johnson.

**CONTEST WINNERS**

Sean Coad, Matt Barth and Matt McDonald were the free throw contest champions.

Derrick Dye, Troy Phillips and Chad Taylor earned top honors in the 3-point shooting contest.

**Bowling**

Steve Greenspan's 170.3 was the highest average over three games, while J. T. Gorthwaite had the high game overall at 215.

**Pool**

Bill Cylkowski won the 8-ball tournament championship.

**Volleyball**

**FALL CO-REC LEAGUE**

**Standings**

Next (3-0), G's Team (2-0), KOR (3-1), Soaring Falcons (3-1), Jenna's Team (2-2), Spikes Alive (1-3), Feedback (0-3), Parkateers (0-4).

**X-country ready for next year**

by Alden Loury  
Sports Editor

The Parkland cross-country team may have returned from the NJCAA Division II championship meet without a title, however, the young squad did leave with hope and promise.

The Cobras finished eighth overall in the men's race. Cory Finn (33rd overall), for the first time this year, led all Parkland runners finishing the course in 28:55. Aaron Culbertson and John Jess, 39th and 48th overall, respectively, finished within a minute of their teammate.

Corey Rayburn, 15th overall, ran her fastest time of the season. She completed the course in 20:21 outdistancing the next Cobra by nearly two minutes in the women's race.

Cathy Fry and Shannon Good finished 38th and 53rd, respectively, for the Cobra women.

Coach Buss has said that this squad has lowered its times throughout the year. With the hope and promise this team has maybe next year they will bring home a national title as well.


**TIMELESS TOYS**

Featuring educational & creative toys designed to spark the imagination of infants through adults.


Ask about our new VIP Toy Club

1707 W. Kirby, Champ. • 352-5648

**BURRITOS AS BIG AS YOUR HEAD!**



Our Burritos, Tacos and Tortas hit the spot after the bars kick you out!



**We satisfy when the bars can't!** 1905 Glen Park Dr.  
Open 11a.m.- 2:30a.m.



**New Sports Menu**

- \*VIDEO REPLAY\*
- (We video tape local softball games & replay on widescreen at Pia's)
- \*TEAM TRIVIA\*
- \*MUNCHIE HOUR 4:00-6:30 Mon.-Fri.\*
- Enjoy free pizza, tacos, chips & more
- \*Sports satellite T.V. for all Bears Bulls & Blackhawks games!\*

1609 W. SPRINGFIELD • CHAMPAIGN • 351-1993

---

Expires 12/31/93

PC **50¢ OFF**

Any Burger or Sandwich Purchased  
*Valid only with coupons. Not valid with any other coupons or discounts.*

PIA'S • 1609 W. Springfield • 351-1993

---

Expires 12/31/93

PC **FREE FRIES**

With any Burger or Sandwich Purchase  
*Valid only with coupons. Not valid with any other coupons or discounts.*

PIA'S • 1609 W. Springfield • 351-1993





**WBSOINS**  
AIRBRUSH DESIGNS  
**DEREK DUBSON**  
**328-2366**  
1301 EASTERN DR. • URBANA, IL. 61801

## INTRAMURAL NEWS

Parkland Intramurals is conducting a 3 on 3 Tournament from 12-1 p.m. on Tuesdays and Thursdays in December starting Dec. 2. Teams should be in Parkland's gymnasium and ready to play on Dec. 2. The deadline for team sign-ups is Dec. 1. Rosters must have at least 3 players and a maximum of 5. Start forming your Spring League Co-Rec Volleyball and Basketball Teams. Deadlines for these activities are made available to all Parkland students, faculty and staff. Sign-ups are always placed in the Intramural sign-up boxes near X153 and P110..



# Cobra Scoreboard

## BASKETBALL

**MEN**  
Record: 5-0  
**LAKE COUNTY TOURNEY**  
At Grayslake  
Friday, November 12  
Parkland 107, Truman 74  
Saturday, November 13  
Parkland 89, Lake County 54  
Parkland 117, Highland 93  
At Springfield  
Wednesday, November 17  
Parkland 112, Lincoln Land 93  
At Parkland  
Saturday, November 20  
Parkland 95, Ill. Valley CC 81

**WOMEN**  
Record: 2-1  
At Springfield  
Wednesday, November 17  
Lincoln Land 87, Parkland 84,

double overtime  
At Parkland  
Thursday, November 18  
Parkland 85, Spoon River 19  
Saturday, November 20  
Parkland 52, Lake Land 46

## CROSS COUNTRY

**NJCAA CHAMPIONSHIPS**  
At Tempe, Ariz.  
Saturday, November 20  
Men  
TEAM RESULTS  
1. SW Indian Polytechnic Institute (N.M.) 42; 8. Parkland 193.

**PARKLAND RESULTS**  
33. Cory Finn 28:55  
39. Aaron Culbertson 29:26  
48. John Jess 29:48  
61. Curt Shoemaker 30:55  
76. Jason Para 34:57

**Women**  
TEAM RESULTS  
1. Danville 31; Parkland (no team score).

**PARKLAND RESULTS**  
15. Corey Rayburn 20:21  
38. Catherine Fry 22:09  
53. Shannon Good 24:37

## VOLLEYBALL

RECORD: 26-25  
**REGION 24 TOURNAMENT**  
At Rockford  
Friday, November 12  
ICC def. Parkland  
16-14, 9-15, 15-9, 16-14  
Parkland def. Wabash Valley  
8-15, 16-14, 12-15, 15-12, 15-4


Saturday, November 13  
ICC def. Parkland  
16-14, 8-15, 15-12, 9-15, 15-12

You can still earn credit this semester.  
Sign up today for 3-week courses beginning November 29.

Course #	Title	Days	Times	Dates	Credit Hours	Cost
<b>COURSES AT PARKLAND</b>						
BUS 101-099	Introduction to Business	MTWRF	2-5 p.m.	Nov. 29-Dec. 17	3	120
OFC 191-099	Microcomputer Word Processing I'	MTWRF	2-5 p.m.	Nov. 29-Dec. 17	3	123
ORIN 101-099	Strategy for Success	MTWR	2-4:35 p.m.	Nov. 29-Dec. 16	2	80
PHI 100-099	Logic/Critical Thinking	MTWRF	2-5 p.m.	Nov. 29-Dec. 17	3	120
PSY 107-099	Human Sexuality	MTWRF	2-5 p.m.	Nov. 29-Dec. 17	3	120
SOC 101-099	Introduction to Sociology	MTWRF	2-5 p.m.	Nov. 29-Dec. 17	3	120
SPE 101-099	Introduction to Speech Communication	MTWRF	2-5 p.m.	Nov. 29-Dec. 17	3	123

\*Refer to the Course Listings in the 1993 Fall Class Schedule for prerequisites that apply to this course.

Classes meet at Parkland College. **M - Monday** **R - Thursday**  
Costs listed are for residents of Parkland College District 505. **T - Tuesday** **F - Friday**  
**W - Wednesday** **S - Saturday**  
Special tuition rates for senior citizens.



**Parkland College**  
Invest in your future through education.

2400 West Bradley Avenue • Champaign, Illinois 61821-1899 • General Information 217/351-2200  
Admissions 217/351-2208 • (toll-free) 1-800-346-8089 • Campus Tours 217/351-2561

## Walking for health, fitness and fun

by Alden Loury  
Sports Editor

The Spirit Sprint attracted a number of participants. Included among them were the Ridgewalkers.

The local chapter of the walking club began here nearly a year ago and currently has 10 members. "We walk for health, fitness, and fun," said David Bradley of Champaign.

Walking for fun is not an exaggeration. The walkers were not concerned about their finishing times and didn't even register for the race.

Bradley says he and his wife Yuri have walked all

over Europe. His jacket, serving as proof, was covered with dozens of patches identifying all the places he had walked. Bradley estimates he and his wife have travelled more than 10,000 km.

"Walking is great for health and enjoyment. It's a great way to see many places. I wish more people would join." In the ten years he has been walking, Bradley has become a world traveller, visiting between 15 to 20 countries.

Anyone interested in joining the Ridgewalkers or for more information call David Bradley at 355-6811.


## What can you expect from Bank One?

### COMPLETE BANKING SERVICES


- Loans: Real Estate Home Equity
- Checking Accounts
- Business Accounts
- Investments
- Trust Services
- The One Phone®

24-Hour Customer Account Information 351-1638

- Eight Banking Centers to Serve You Complete Teller Service 7 a.m. - Midnight, 7 Days a Week at Our Country Fair Location
- For More Information, Call 351-1600



**BANK ONE**  
Whatever it takes.  
Member FDIC



## INSTY-PRINTS™

### BUSINESS PRINTING SERVICES

Serving your business printing needs with fast service and great savings!

- Color Printing
- Fast Typesetting
- Copies
- Carbonless Forms
- Brochures
- Letterhead
- Business Cards
- Envelopes
- Bindery Services
- Booklets
- Manuals
- Newsletters
- FAX Service

**356-6166**  
1001 N. Mattis Avenue  
Champaign, IL 61821  
FAX: 356-6297



## Cobras wrap up v-ball season

by J. Fleener  
Prospectus Staff Writer

The Cobra volleyball team brought a successful season to a close against stiff competition at the regional tournament at Belleville Area Community College Nov. 12-13.

The respectable 26-25 season is the worst that Coach Brenda Winkeler has experienced during her young career at Parkland. Achieving a winning season during a building year, Winkeler

racks up her fifth year at Parkland taking the Cobras into post-season play every one of those years.

The Cobras were matched against Illinois Central College for the first game of the tournament when they were defeated in four games.

The second match-up saw Parkland going head to head against Wabash Valley. Starting off the first game with a 12-0 deficit, the Cobras pulled it together to win the match.

The victory against

Wabash Valley advanced Parkland to a rematch against Illinois Central College. The Cobras started the two and a half-hour gruel-fest with a 16-14 loss against ICC. Coming back to even the match at 1-1, the Cobras decisively trounced ICC 15-8. ICC answered with a 15-12 victory to put Parkland down 2 games to 1.

Handedly defeating ICC 15-9 in the fourth game, the Cobras brought the match even at 2-2 to set up the final showdown in the fifth game. With fatigue now the largest factor in the contest, the Cobras sucked air while ICC scored points, jumping to a 12-4 lead. The persistence of the young squad and the determination of Coach Winkeler fueled Parkland to battle back with 8 unanswered points, tying it up at 12-12. ICC, however, proved the fittest in this survival game to finish Parkland off by scoring the next 3 points, bringing the final score to 15-12.

Coach Winkeler returns to the court in February to start the Spring season with the entire squad returning except for sophomores Angela Lohr and Kendra Blaudow.

## Lady Cobras top Crusaders 85-19 in home opener

by J. Fleener  
Prospectus Staff Writer

The Lady Cobra home basketball opener on Nov. 19 against the Spon River Lady Crusaders resulted in a 85-19 win.

The Cobras entered the contest with a clear height advantage. While the Crusaders' tallest player was a mere 5 ft. 7 in., nearly the entire Cobra roster was above that mark. That height advantage coupled with well distributed talent and excellent coaching proved unmatchable for the visiting team.

Under the direction of Coach Argie Johnson, the Parkland team played full-bore B-ball throughout the 40 minutes of regulation play.

At halftime, the game already belonged to the Cobras with a score of 38-12.

Refusing to decrease their intensity, the Cobras ripped wide the margin by adding another 47 points in the second half while holding the stunned Crusaders to an anemic 7 points.

"The only way we can win is by playing good defense," said Coach Johnson after the game. "Our goal is to hold teams to 50 points or less."

When asked about the transition from volleyball for Sophomore Kendra Blaudow and Freshmen Jennifer Coffey and Tiffany Grunnert, Coach Johnson said "The only transition they're going through now is to learn the offensive plays. Once they do, they can start relaxing and playing natural basketball."

Of this talented freshman class, Coach Johnson will be looking to Jami Lavicka and Jennifer Hortenstine in particular to develop the skills needed for a successful season.

Before the home opener in Champaign, Coach Johnson took his squad on the road to open the season at Lincoln Land Community

College in Springfield on Nov 17 where the teams were not mismatched. Height was not a problem for Lincoln Land who came into the game with three previous games this season already under their belt.

First-game jitters and poor free-throw shooting were the most significant factors for the Cobras in their 87-84 double overtime loss. "I have no doubt in my mind that Lincoln Land will not beat us again when we meet here at Parkland," Coach Johnson said.

**HOUSE OF RISING SOUND**  
TASTE A MOMENT OF MADNESS...LISTEN TO THE SOUND OF PURPLE  
come where the PLEASURE LOVERS are

SUSAN STRASBERG  
DEAN STOCKWELL  
**PSYCH-OUT** PATHECOLOR  
RECORDS TAPES CD BOOKS MAGS COMIX  
NEW AND USED • BUY SELL TRADE  
110 E. UNIVERSITY AVE. • CHAMPAIGN 352-2920

*Gulliver's II*  
25¢ Off  
Soft Serve Ice Cream  
and  
Frozen Yogurt

Coupon redeemable for 25¢ off any ice cream or frozen yogurt.  
Exp. 12/7/93

It's Turkey Time!  
Happy Thanksgiving



PARKLAND COLLEGE  
**Parkland This Week**

**Thursday, November 25**  
Thanksgiving Day • College Closed

**Friday, November 26**  
Thanksgiving Break • College Closed  
Planetarium Shows • Fall Prairie Skies, 7 p.m.; Rites of the Season, 8 p.m.; Zeppelin: Flight to Middle-Earth, 9:30 p.m. • William M. Staerkel Planetarium • 217/351-2446

**Saturday, November 27**  
Planetarium Shows • Little Star That Could, 11 a.m.; Flower Planet, 12 noon and 7 p.m.; Rites of the Season, 1 and 8 p.m.; Zeppelin: Flight to Middle-Earth, 9:30 p.m. • William M. Staerkel Planetarium 217/351-2446

**Monday, November 29**  
Robert McCauley Solo Art Exhibit • Monday-Friday 10 a.m.-3 p.m., Monday-Thursday 6-8 p.m., and Saturday 10 a.m.-12 noon • Art Gallery • Continues through Dec. 15 • 217/351-2485  
\*Lotus 1-2-3: Introduction (WKS 553-096) • 1-4 p.m. • Room B227 Continues Tuesday, Wednesday, and Thursday • 217/351-2599  
\*DOS MS/PC: Introduction (WKS 551-095) • 6-9 p.m. • Room B227 Continues Wednesday • 217/351-2599

**Tuesday, November 30**  
\*Business Training Center Workshop: Nonverbal Communication 1:15-4:15 p.m. • Myna Thompson School, Rantoul • 217/893-1240

**Wednesday, December 1**  
\*Career Planning Seminar in Rantoul • 6-8 p.m. • Myna Thompson School • 217/351-2536

**Thursday, December 2**  
\*Team Building and Communication Skills for Health Professionals (WKS 719-094) • 8 a.m.-5:30 p.m. • Room C118 • Continues Dec. 9 217/351-2292

**Friday, December 3**  
Parkland Sampler in Rantoul • 11:30 a.m.-1 p.m. • Myna Thompson School • 217/893-1240  
Planetarium Shows • See Nov. 26  
Theatre Production: "Five Golden Rings" • 8 p.m. • Parkland College Theatre • Continues Dec. 4, 9, 10, and 11 at 8 p.m. and Dec. 4, 5, 11, and 12 at 3 p.m. • 217/351-2528

**Saturday, December 4**  
Men's and Women's Basketball, Christie Clinic Shootout • Time TBA • Parkland Gymnasium • 217/351-2226  
\*Winter Emergencies: Cold Water Drowning and Hypothermia 8 a.m.-5:30 p.m. • Room L111 • 217/351-2292  
\*Real Estate Seminar: Anti-Trust (WKS 942-094) • 9 a.m.-12 noon Room C118 • 217/351-2414  
Planetarium Shows • Little Star That Could, 11 a.m.; Flower Planet, 12 noon; Rites of the Season, 1 and 8 p.m.; Zeppelin: Flight to Middle-Earth, 9:30 p.m. • William M. Staerkel Planetarium • 217/351-2446  
Theatre Production: "Five Golden Rings" • 3 and 8 p.m. • Parkland College Theatre • Continues Dec. 9, 10, and 11 at 8 p.m. and Dec. 5, 11, and 12 at 3 p.m. • 217/351-2528  
World of Science Lecture: The Cold Edge of the Solar System 7 p.m. • William M. Staerkel Planetarium • 217/351-2446

**Sunday, December 5**  
Men's and Women's Basketball, Christie Clinic Shootout • Time TBA • Parkland Gymnasium • 217/351-2226  
Parkland Community Band Concert • 3 p.m. • Rantoul High School 217/351-2483  
Theatre Production: "Five Golden Rings" • 3 p.m. • Parkland College Theatre • Continues Dec. 9, 10, and 11 at 8 p.m. and Dec. 11 and 12 at 3 p.m. • 217/351-2528

**Tuesday, December 7**  
Parkland Sampler in Rantoul • 6-7 p.m. • Myna Thompson School 217/893-1240  
Men's Basketball vs. Illinois Central • 7 p.m. • Parkland Gymnasium 217/351-2226

\*Preregistration required.  
All events are open to the public.  
The William M. Staerkel Planetarium and the Parkland Theatre are located on the west side of Parkland's campus near the Duncan Road entrance. Parking is available in lots M-1 and C-4.

**Parkland College**  
Learning is an investment in your best interest.

2400 West Bradley Avenue • Champaign, IL 61821-1899 • Campus Tours 217/351-2561  
General Information 217/351-2200 • Admissions 217/351-2208 • (toll-free) 1-800-346-8089