

Arkansas Tech University

## Online Research Commons @ ATU

---

1993 ATU Symphonic Band

1990-1999 ATU Music Department Sound  
Recordings

---

3-14-1993

### Reel notes

ATU Symphonic Band

Hal Cooper

Bill Spainhour

Follow this and additional works at: [https://orc.library.atu.edu/atu\\_reel673](https://orc.library.atu.edu/atu_reel673)

---

### Recommended Citation

ATU Symphonic Band; Cooper, Hal; and Spainhour, Bill, "Reel notes" (1993). *1993 ATU Symphonic Band*. 1. [https://orc.library.atu.edu/atu\\_reel673/1](https://orc.library.atu.edu/atu_reel673/1)

This Book is brought to you for free and open access by the 1990-1999 ATU Music Department Sound Recordings at Online Research Commons @ ATU. It has been accepted for inclusion in 1993 ATU Symphonic Band by an authorized administrator of Online Research Commons @ ATU. For more information, please contact [cpark@atu.edu](mailto:cpark@atu.edu).

ATU

Symphonic Band

3-14-93

7/2 ips

1/4 Track

Tail Out



Arkansas Tech University  
Music Department  
Presents

Concert Band  
Robert Casey, Conductor  
and  
Symphonic Band  
Hal Cooper, Conductor  
In Concert

March 14, 1993  
2:30 P.M.

Witherspoon Auditorium

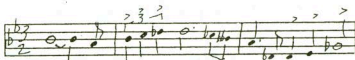
Program Notes

Symphony in Bb by Hindemith

The Symphony in Bb for Concert Band was composed in 1951 for the U.S. Army Band, Washington D.C. It is recognized as one of the most significant pieces of music in the realm of art music for the concert band medium, and is among the most difficult pieces to perform in the entire repertoire. This is probably the first time the Symphony in Bb has been performed in its entirety in Arkansas.

As with all of Mr. Hindemith's music, the piece is characterized by an escape from traditional harmonic treatment and melodies which do not conform to step-wise contour or traditional "within the key" melody. It is, however, fairly strict in form and uses melody and harmony as the foundation to an ingenious treatment of thematic presentation. I will endeavor to help you hear these themes be presented, deviated from, and returned to - sometimes playing two or three fragments at a time as a "culminating" device toward the ends of the movements.

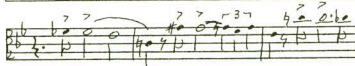
movement I -



Theme I  
(pts)



Theme II  
(oboe)



Theme III  
(horn)

mv't II



(tptr I + sax)

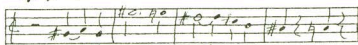


(C II  
trumpets)

mv't III



I  
(pts)



II  
low reeds

L3 -

L3 -

Concert Band  
Robert Casey, Conductor

An Original Suite 1. March	Gordon Jacob
Die Nacht	Richard Struass Arr. A.O. Davis
Emerata Overture	Claude T. Smith
Sequoia	Homer C. La Gassey
Amparito Roca	Jaime Texidor Arr. Aubrey Winter

Symphonic Band  
Hal Cooper, Conductor

Little English Girl	D.Delle Cese
Symphony in B flat I. Moderately fast II. Andante grazioso III. Fugue	Paul Hindemith
Sea Songs	Thomas Knox
Elsa's Procession to the Cathedral	Richard Wagner
Commando March	Samuel Barber



ATU

Band

Christmas Concert

12-5-93

7 1/2 ips

1/4 Track

Tail Out  
1 of 2



ARKANSAS TECH

**SYMPHONIC BAND**  
**HAL COOPER, DIRECTOR**

*"A Winter Concert"*

DECEMBER 5, 1993, 2:30 PM, WITHERSPOON AUDITORIUM

**PROGRAM**

Variants on a Mediaeval Tune .....Bello Joio

God of Our Fathers .....Claude T. Smith  
BILL SPRINHOOR, CONDUCTOR

A Canadian Brass Christmas .....Henderson/ Cable

A Fireside Christmas *- last 30 sec.* .....Sammy Nestico

Old Scottish Melody (AULD LANG SYNE) .....Charles Wiley

Reel #1

Reel #2

**Merry Christmas**