

9-4-2012

Independent - Sep. 4, 2012

Emily N Haddad

Follow this and additional works at: <https://neiudc.neiu.edu/independent>

Recommended Citation

Haddad, Emily N, "Independent - Sep. 4, 2012" (2012). *The Independent (1988-present)*. 451.
<https://neiudc.neiu.edu/independent/451>

This Newspaper is brought to you for free and open access by the NEIU Student Newspapers at NEIU Digital Commons. It has been accepted for inclusion in The Independent (1988-present) by an authorized administrator of NEIU Digital Commons. For more information, please contact neiudc@neiu.edu.

INDEPENDENT

NORTHEASTERN ILLINOIS UNIVERSITY



Tuesday, September 04, 2012

www.neiuindependent.com

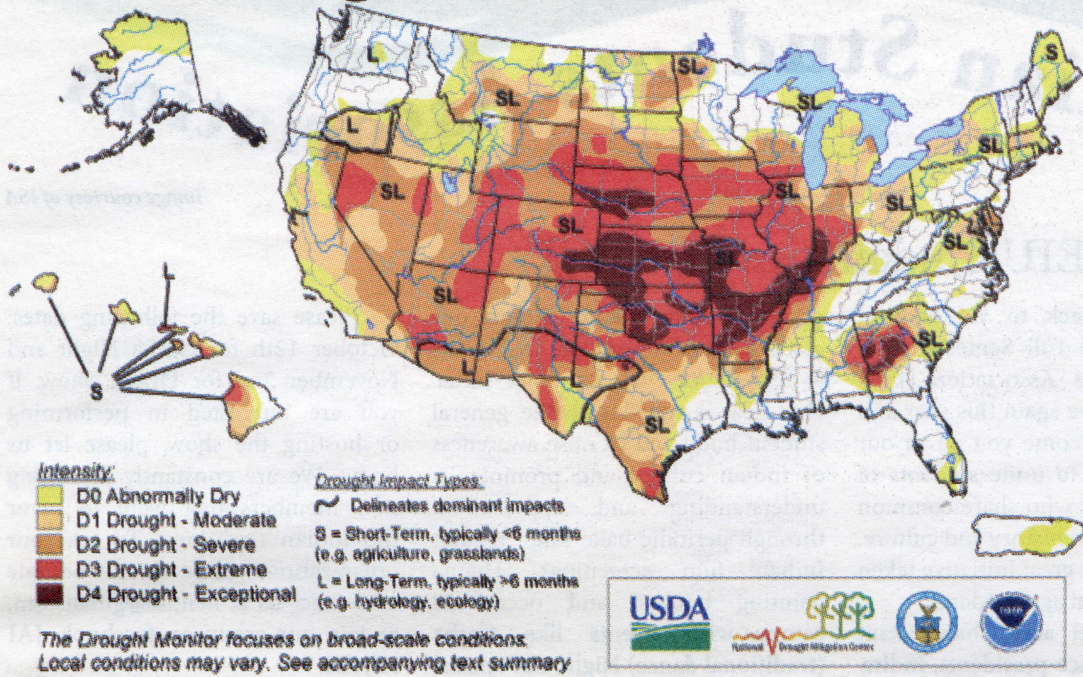
Vol. 32 Issue 2

Drought Hits U.S. Hard

By Christos Liardakis – Assistant Opinions Editor

U.S. Drought Monitor August 14, 2012

Valid 7 a.m. EDT



Map courtesy of USDA

The Drought Monitor focuses on broad-scale conditions. Local conditions may vary. See accompanying text summary for forecast statements.

<http://droughtmonitor.unl.edu/>

Released Thursday, August 16, 2012
Author: Michael Brewer/Liz Love-Brotak, NOAA/NESDIS/NCDC

This summer, the United States experienced one of the worst droughts in history since the dustbowl. Farms went weeks on end without a drop of rain, particularly in the Midwest which, combined with high temperatures, resulted in a significant drop in harvest-ready plants. The drought affected numerous parts of the nation's industrial sector as well as countries outside of the U.S. The United States has ample agriculture. If one part of the U.S. is experiencing drought and crop loss problems, the whole food industry suffers as a result. While droughts are not uncommon, this summer the drought conditions were felt all over the United States, leaving almost all farms affected. As the image shows, the majority of the United States experienced at least an abnormal dryness level. The Midwest and Southwestern parts of the United States were particularly hard-hit, experiencing severe to exceptional drought conditions.

The drought conditions were persistent and occurred during the maturing and harvesting periods of the country's most important crops - corn. The USDA estimated the drought damaged crops enough to lower corn production to by 13 percent when compared to 2011 crop numbers. Corn, and its by-products, is used for wheat in food, fertilizer, ethanol,

beverages, animal feed and biodegradable plastics. Director of the Agricultural Entrepreneurship Initiative at the University of Iowa and Agricultural Economist Kevin Kimle explained that "corn matures by about Labor Day, but what happens in dry conditions is it shuts down early if it doesn't get any moisture. When the cost of a base ingredient like corn goes up, it fundamentally affects everything."

The EPA mandates that 13.6 billion gallons of bio-fuels such as ethanol, should be produced. At 26 pounds of corn per gallon of ethanol, the amount of corn necessary to meet the EPA's mandate could exceed 40 percent of the total corn crop for 2012. The number of beef and dairy cattle also reached 90.8 million head according to the USDA. Cattle typically eat 8 pounds of supplemental feed, mainly corn, in addition to 20 pounds of hay per day. The drought will result in higher prices for both corn and hay and potentially force ranchers to cut the amount of feed, resulting in smaller animals. The overall scarcity of feed and beef will negatively affect the consumer beef and dairy market, bringing eventual price increases.

Farmers are at a slight advantage during the drought, being covered by federal programs and crop insurance. The livestock industry (beef, poultry and pork)

was affected by the drought and subsequent higher feed prices and is not typically covered by insurance. Ranchers face being unable to feed their livestock for the coming winter, and may be forced to thin out herds, creating an excess of meats on the market and lowering prices. Brian Fuchs, a climatologist at the National Drought Mitigation Center acknowledges that this may seem like the one good thing to come out of everything, but he also warned that these tough decisions "create a glut of meat and force prices to go down in the short term," Fuchs says. "Once that glut is gone, prices spike from lack of supply, and it will take several calving seasons to build that supply up again."

The United States will not be the only country affected. Every year, the U.S. ships thousands of tons of grains as foreign aid to impoverished third world countries. These countries include Afghanistan, India, Congo, Nepal, and many more. The full list of countries that rely on U.S. food aid can be found at <http://foodaid.org/food-aid-programs/food-for-peace/>. While the U.S. has pledged not to decrease foreign aid foodstuffs, the increase of prices could have a devastating effect on countries with food stability issues that rely on purchasing grain from overseas.

WZRD Deactivation, Lock-out Continues

By Emily Haddad - Editor-in-Chief and Jacklyn Nowotnik - Managing Editor

The NEIU radio station, WZRD 88.3 FM, remained closed to the public and on auto-play during the first week of Fall 2012 classes as a result of a June 29, 2012 Office of Student Leadership Development (SLD) memo detailing the decision to suspend normal usage. The Wizards, the student organization of DJs that maintain the radio station and provide content, were also deactivated as part of that decision amid serious allegations.

Members of WZRD spent time since the deactivation was handed down attempting to address the problem by appealing to the Student Government Association (SGA) and the Council of Clubs (CoC) for clarification on the decision, and what, if any, official charges were being brought against the organization, with little success. According to NEIU SGA by-laws, the CoC "shall be the main body advocating for and creating club life on campus," and both the CoC and SLD offices have the authority to conduct reviews of an organization's operation. However, according to multiple WZRD sources, members attending several SGA and CoC summer meetings received little information about the situation, leaving the student organization feeling "tried, convicted, and sentenced without due process or appeal." "The SLD essentially took control of the radio station away from the students two weeks before this deactivation by dictating that students who had not completed training would be going on the air to do a DJ personality show, totally going against our anonymity policy, free-form format and bylaws," WZRD member Peter Enger said.

Initially facing allegations of FCC violations, mismanagement, misappropriations of funds, discrimination/intimidation complaints, and equipment damage, the new Student Organization Review Process issued to WZRD members has since downgraded many of the issues the Charter Rules & Regulations Committee will be looking into. The current points of concern are membership advancement, inconsistency in applying constitution and by-laws, new member selection process, verbal altercation between members and misuse of funds.

These new allegations were listed in an unsigned memo lacking university letterhead distributed at a recent SGA meeting outlining the structure and procedure of the official review process, information that had been unavailable for the previous six weeks. The memo, described as "transparent and inclusive" by Student Affairs Vice President Frank Ross, names the Charter, Rules & Regulations (CRR) subcommittee (stemming from the CoC) as the reviewing body for the WZRD organization. The first phase of the process begins with individual interviews through Sept. 14, 2012. The second and third phases begin with presentation of the facts gathered by the subcommittee, giving WZRD members a chance to respond to the allegations, and deliberation by the CRR before a final recommendation of action is given to the director of SLD. No specific dates are quoted for phase two and three, but the whole process is expected to conclude by Nov. 2, 2012, a date confirmed by Ross. "Being part of an [organization] can give you a real-life experience outside of classroom learning," Ross said.

The lateness and length of the projected review process will leave the 100-watt radio station, intended to give NEIU students hands-on experience in broadcasting media, inaccessible to students for the majority of the Fall 2012 semester. This raises serious questions about the legality and propriety of denying access to a main component of student media education funded by Student Activity fees.

Accompanying the previous memo was a second, similarly unsigned memo that proposed an overall review of "viable options for WZRD 88.3 as a student radio station." The memo said that a committee of students, faculty and alumni will analyze the Spring SGA Election survey results about WZRD, current trends and research on college radio stations, and the evidence from the CRR deliberation about the WZRD organization, as well as conduct student focus groups. The real purpose behind this second review committee is unclear, as is the need for what the memo describes as "feasible options" for WZRD.

Continued on Page 2

NEWS

NEIU Ranked Most Affordable

PAGE 4

A&L

Nieves Profile

PAGE 9

OPS

Chik-Fil-A

PAGE 7

INDEPENDENT

Editor in Chief
Emily N. Haddad

Managing Editor
Jacklyn Nowotnik

Opinions Editor
Syed A. Hussain

Arts and Life Editor
Gary Soriano

Online Editor
Relu Jianu

Production Editor
Nicholas Joly

Production Staff
Janean L. Watkins
Mark Amponin
Brisa Becceril

Copy Editors
Linda Monacelli
Christos Liardakis

Staff Writers
Desiree Dylong
Juan Gonzalez
Melissa Brand

Media Advisor
Tasha Neumeister

The Independent is a public forum for the university and community around Northeastern Illinois University. The Independent is completely student run and receives no prior review of its content by anyone other than its student editors.

The Independent is published every other week except during summer and semester breaks. Deadlines are nine (9) days prior to the issue in which a contribution is to appear. Views expressed in letters are those of the university community and not those of the Editorial Board.

The Editor-in-Chief is responsible for the content of the Independent, and views presented do not necessarily represent those of the administration, faculty or students.

The Independent is a member of the Illinois College Press Association and Associated Collegiate Press.

Independent
Northeastern Illinois University
Room E-049
5500 N. St Louis Ave.
Chicago, Illinois 60625
773-442-4577
neuiindependent@gmail.com
neuiadvertising@yahoo.com
www.neuiindependent.com

Northeastern Illinois University



Image courtesy of ISA

Hello NEIU Students and faculty!

Welcome back to yet another great, fun-filled Fall Semester! The Indian Students Association (ISA) at NEIU is active again this year and we want to welcome you all to our club. ISA aims to unite students of all backgrounds who share common interest in Indian history and culture. ISA is back with great initiative taken by Samira Savani as president,

Jayati Gohel and Chandrakant Lunagariya as vice-presidents, Indira Bambur as treasurer, and Fajila Tailor as secretary.

We would like to extend our association to any student that wants to experience the Culture of India. Our goal is to educate the general student body and to raise awareness of Indian culture and promote its understanding and appreciation through periodic bake sales, regular Indian film screenings, Henna painting booths, and occasional campus-wide events like Garba (traditional dance) Night, our annual Diwali show, and much more.

Please save the following dates: October 12th for Garba Night and November 2nd for Diwali Show. If you are interested in performing or hosting the show, please let us know. We are constantly recruiting new members that want to savor the Indian traditions. To join our organizations please do not hesitate to contact us at neuiisa@gmail.com, or join our group on facebook. JAI HIND!

Sincerely,
NEIU ISA

Continued from Page 1

Multiple WZRD members expressed concerns over the radio station retaining its particular style of freeform format that prizes music education and exposure to the unusual, in the wake of the deactivation and in light of these two review processes. In the club charter's statement of purpose, WZRD seeks to 'be a unique forum for the widest spectrum of music and information

programming.' "The Wizard handbook given to every new member says that no Wizard should play just one kind of music, but at least three different genres. Some people don't like that and want to do their own thing." WZRD member Ari Fishman said of the allegations that certain types of music were barred from the station. "We're here to expose people to the unusual, unknown

and underground of music, not to play Top 40 music. There are other stations people can go to for that."

Describing the WZRD situation Ross said no decisions had been made yet. Ross explained that he had heard their concerns first-hand and wanted to "make it happen" for the organization. "I don't want a long process, I want them back up and running."



Graphic by Nicholas Joly



Police Blotter

31 JULY 2012
9:00 p.m.
B-Building Computer Lab
Theft \$300 and under
Stolen Wallet.

06 AUG 2012
8:00 a.m.
Bryn Mawr and Kimball
Suspended Driver's License
2 Citations and I-Bond issued.

10 AUG 2012
9:52 p.m.
5825 N. Central Park
Possession of Cannabis
Arrested.

13 AUG 2012
11:09 a.m.
3701 W. Bryn Mawr
Theft over \$300
NEIU equipment removed from location.

15 AUG 2012
11:29 a.m.
3701 W. Bryn Mawr
Theft over \$300
NEIU equipment removed from location.

15 AUG 2012
4:42 p.m.
3240 W. Bryn Mawr
Suspended Driver's License
3 Citations and I-Bond issued.

15 AUG 2012
5:45 p.m.
3701 W. Bryn Mawr
Suspended Driver's License
3 Citations and I-Bond issued.

15 AUG 2012
8:23 p.m.
3701 W. Bryn Mawr
Suspended Driver's License
2 Citations and I-Bond issued.

16 AUG 2012
4:33 p.m.
Access Road
Suspended Driver's License
2 Citations and I-Bond issued.

16 AUG 2012
1:19 p.m.
Lech Walesa Hall
Theft \$300 and under.
Stolen iPhone.

21 AUG 2012
6:50 p.m.
3800 W. Bryn Mawr
Suspended Driver's License
3 Citations and I-Bond issued.

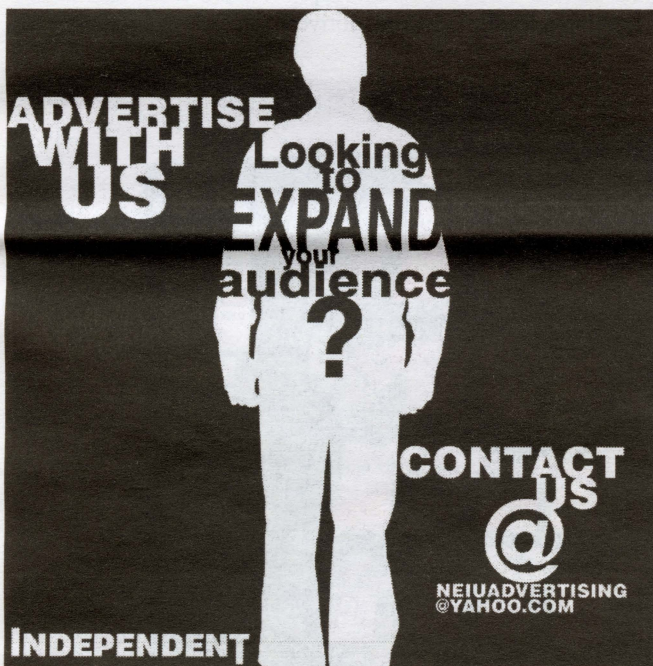
22 AUG 2012
5:20 p.m.
Bryn Mawr and Central Park
Suspended Driver's License
2 Citations and I-Bond issued.

23 AUG 2012
10:05 a.m.
3701 W. Bryn Mawr
Theft \$300 and under
Stolen phone jacks

23 AUG 2012
7:35 p.m.
3701 W. Bryn Mawr
Suspended Driver's License
3 Citations and I-Bond issued.

27 AUG 2012
6:10 a.m.
C-Building
Fire Alarm
False Alarm

29 AUG 2012
4:53 a.m.
CBM
Found University Keys
Key #SM21



ADVERTISE WITH US
Looking to **EXPAND** your audience?
CONTACT US @
NEIUADVERTISING@YAHOO.COM
INDEPENDENT

Look for this section in every issue to find out what's going on around campus regarding safety. Information is compiled from the NEIU PD and disseminated exactly as provided by the police department by Independent staff. For questions or concerns regarding safety, call the NEIU Police Department.

NEIU Police:
5500 N. St. Louis Ave. Chicago, IL 60625
The NEIU police department is located on the ground floor of the Parking Garage, on the North side of the building

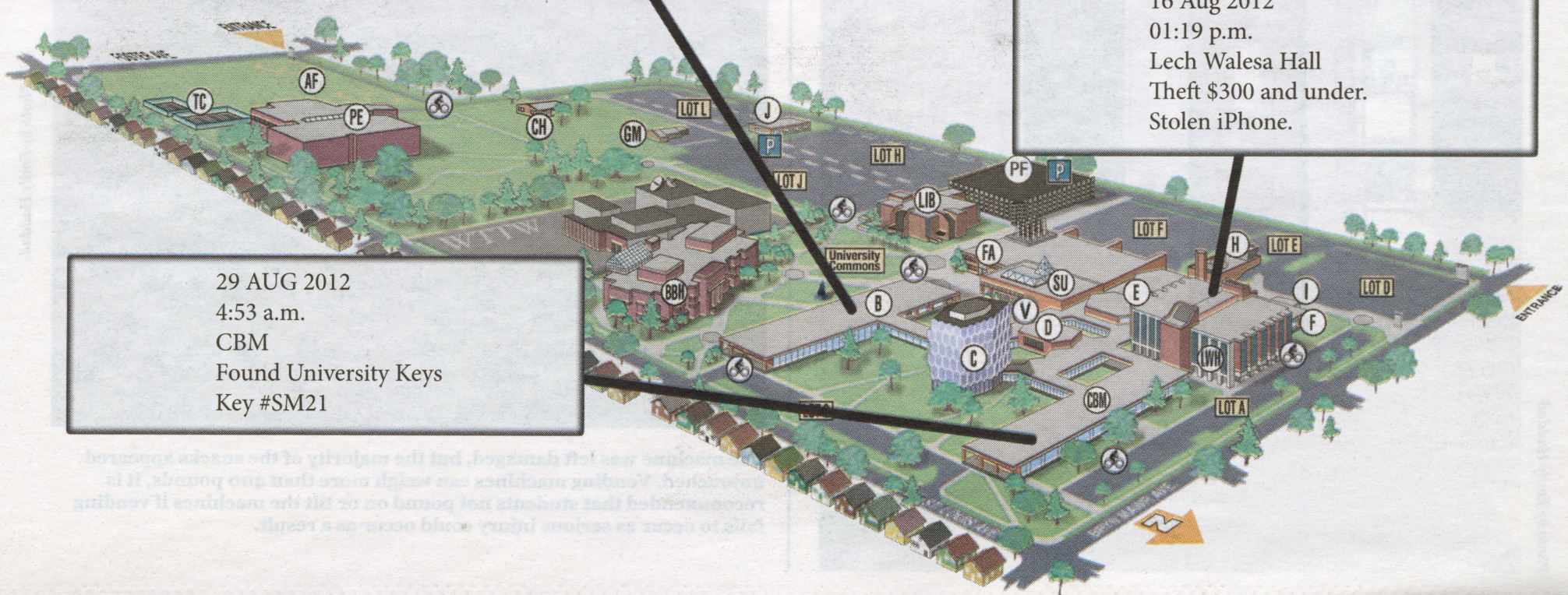
Campus House Phone:
x5511 (Emergency)
x4100 (Non-Emergency)

Off Campus:
(773) 442-5511 (Emergency)
(773) 442-4100 (Non-Emergency)

31 July 2012
9:00 p.m.
B-Building Computer Lab
Theft \$300 and under
Stolen Wallet.

16 Aug 2012
01:19 p.m.
Lech Walesa Hall
Theft \$300 and under.
Stolen iPhone.

29 AUG 2012
4:53 a.m.
CBM
Found University Keys
Key #SM21



NEIU Ranks With Top Universities on Affordability

By Melissa Brand – Staff Writer

News week's annual edition of "College Rankings 2012" ranks Northeastern Illinois University (NEIU) as sixth in the U.S. for Most Affordable Schools. Not only is NEIU ranked high on the list, but the company the university keeps is impressive. The five universities preceding NEIU according to News week are:

- 1) Massachusetts Institute of Technology
- 2) Princeton University
- 3) California Institute of Technology
- 4) Baylor University
- 5) Harvard University

When most people think about college

affordability, they think cheap, but in the report, News week factors in four elements to determine the rankings: debt, total cost, financial aid and future earnings.

According to the report, the average debt per student and percentage of students graduating with debt, according to College InSight is weighted at 25 percent. The total price, including tuition and living expenses, according to the National Center for Education Statistics (NCES), is 25 percent, as is the percentage of full-time students receiving financial aid (this was a proxy for student wealth and financial

need). The last 25 percent of the weighted ranking is based on the starting median salary and mid-career salary from each university, according to PayScale.

"I receive a top quality education here in the social work program at NEIU," Senior Kelly Webb said. "The social work and sociology departments have well prepared me for my pursuit of graduate school. All of my professors are from universities such as Harvard and University of Chicago. I believe they bring their knowledge here to NEIU to provide students with a higher level of education at more affordable costs."

The report stated that "more than 78 percent of NEIU's full-time students receive financial aid and only 13 percent of graduates incur debt." NEIU is a fully accredited public university serving approximately 12,000 students in the Chicago area. NEIU offers more than 70 undergraduate and graduate programs in the arts, sciences, education and business. To see the full report or view the press release, visit NEIU's website.

Student Disability Services - Here to serve NEIU

By Lenyea Williams - Staff Writer

The Student Disability Services office (SDS), an academic support center founded in 1990 to accommodate the special needs of students and facilitate academic success, provides services to all students with disabilities within the Northeastern Illinois University (NEIU) community. The SDS is in compliance with section 504 of the rehabilitation act of 1973.

Located in Building D room 104, SDS offers the following services for qualified students: Academic advisement, academic goal setting, early registration, assessment and testing, auxiliary aid service, social activities, employment opportunities, life planning options, examination proctoring, guided campus tours, photocopy sign language access,

automatic doors, campus ramps, closed caption television, designated parking spaces, technical assistance, elevator access, modified restrooms, enlarger copy, TDY telephone, taped text book access, tutor support and note-taking assistance. In order to receive services, students must be enrolled in NEIU.

NEIU students are required to self-identify their disability providing documents of proof to submit to the SDS office. Students requiring disability services can contact Roosevelt Gordon at R-Gordon@neiu.edu or call (773) 422-4595. They may also contact Effie Sturdivant at (773) 442-5496. SDS is open Monday through Friday from 8 a.m. - 4:30 p.m.

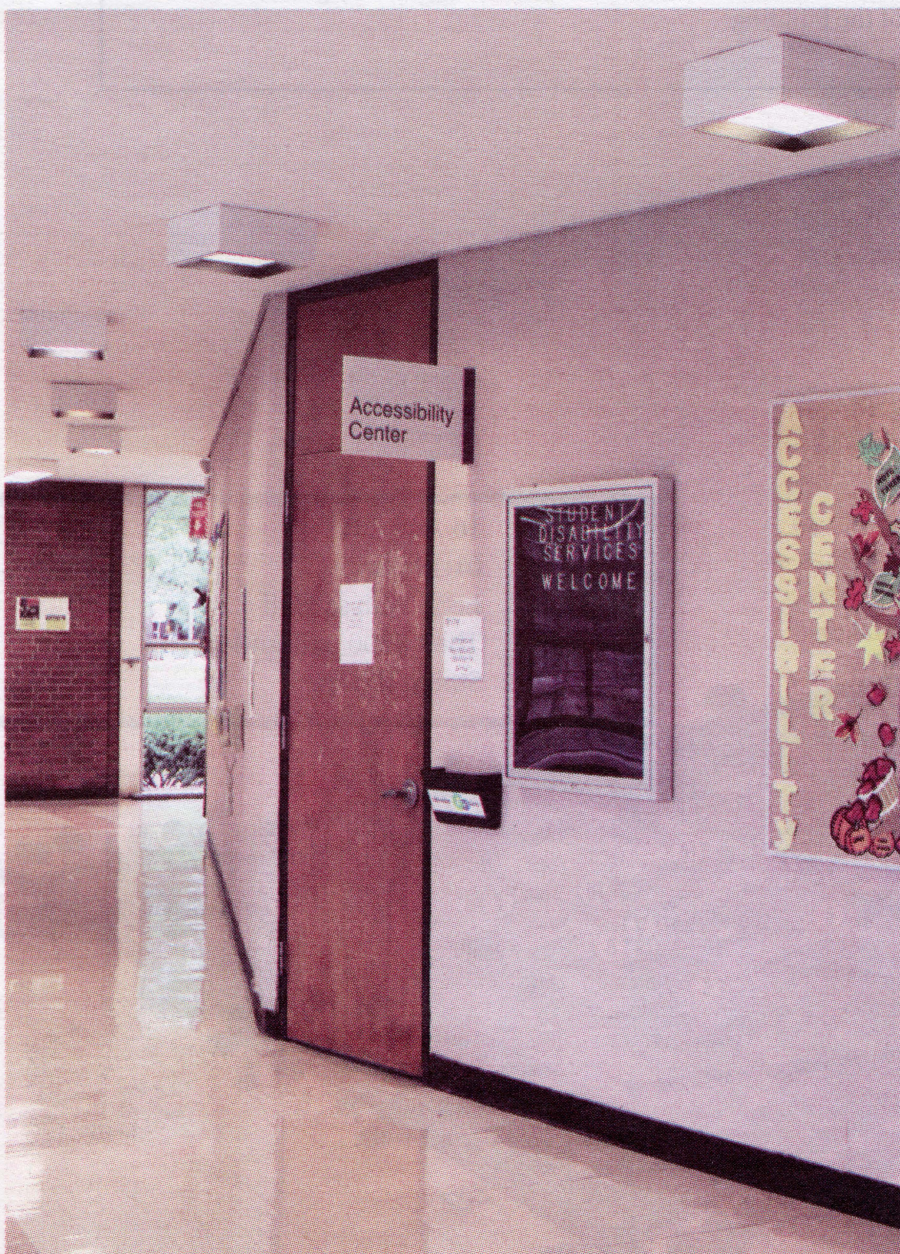


Photo by Emily Haddad

Snack Rage Strikes NEIU Student Lounge

By Emily Haddad – Editor-in-Chief

The glass display of a snack vending machine located in the basement lounge of the Student Union was discovered shattered shortly after 10 p.m. on August 30, 2012. There were no eyewitnesses, but nearby students described hearing a loud

crash around 9 p.m. Campus Security officers were called to the scene and took inventory of the remaining snacks shortly after the initial discovery. There are currently no suspects and it is unclear if theft was the motive.



Photo by Emily Haddad

The machine was left damaged, but the majority of the snacks appeared untouched. Vending machines can weigh more than 400 pounds, it is recommended that students not pound on or tilt the machines if vending fails to occur as serious injury could occur as a result.

BP Gas Contamination More Widespread

By the Associated Press

Illinois drivers whose cars have fallen victim to contaminated BP gas the week of Aug. 13-17, 2012, are now joined by drivers from Indiana and Ohio. BP says the size of its gasoline recall is now more than twice as large as previously reported, at 4.7 million gallons distributed as far as southwestern Ohio and southern Indiana.

BP spokesman Scott Dean said Wednesday the gasoline was distributed from terminals in Whiting, Indianapolis and suburban Chicago and suburban Milwaukee. One tanker went to a station in Camden, Ohio, about 15 miles southeast of Richmond. New research shows the gasoline refined in Whiting also reached stations

as far south as Bloomington and Columbus. Dean previously had said the gas was distributed only in northwestern Indiana and the Chicago and Milwaukee areas.

Northeastern Illinois University (NEIU) students should be aware that several stations located around campus were flagged as having distributed contaminated gas. Exact locations that may have been contaminated can be checked using an interactive tool made by BP to track the distribution at <http://bpresponse.com/go/doc/5207/1525963>. According to BP, drivers who recently visited these local area stations are urged to watch for car issues such as hard starting, rough idling, stalling, or other drivability issues.

According to the Chicago Tribune, fuel line flushes and other repairs related to the contaminated gas range from \$300-\$1200 in the Chicago area. Dean says BP has begun processing nearly 10,000 claims from customers whose vehicles were affected, mostly in Indiana and Illinois. To facilitate the speedy dispersal of repair reimbursements, BP has 150 claim adjustment representatives available to process information and is accepting multiple forms of receipts documenting repairs. Customers affected by contaminated gas can call BP's hotline at (800) 599-9040 or submit a claim sheet at <http://bpresponse.com>.



Photo by Emily Haddad

BP Gas Contamination Affects NEIU Area Gas Stations

Student Activities Office Transitions to Student Leadership and Development Office

By Juan Gonzalez - Distribution Manager

For students, a new school year comes with new faces and new changes. The Student Leadership and Development (SLD) office also experiences the same changes we face.

This year, not only have they gone from being the Student Activities office to the new Student Leadership and Development office, but they have also had several administrative changes: Sharron Evans, formerly the Director of Student Activities Office (SAO), has now moved to another department allowing for Veronica Rodriguez, former Assistant Director, to take her place, and Ian T. Stroud to take Veronica's position as Assistant Director. Tina Garcia (NEIU alumni and previous Intern for the SLD office) holds Stroud's previous position as Coordinator for the SLD office.

With a change of leadership comes a new perspective and a new agenda. New Assistant Director for the SLD office Stroud stated that with the new school year beginning, the office is working hard at rebranding itself under a new name as well as a stronger more solidified office. Stroud was then asked about some exciting events students should look forward to, at which point he began to describe Chicago Live. Chicago Live, an event originally conducted by the SAO, is now being renamed the Discovery Series. "Chicago Live used to be for incoming freshman and what it was, was a trip which was based off of a class's curriculum," Stroud said. "For instance, if [English Professor] Dr. Poll was teaching a class on a certain author, and some play about

said author's work, then we would work with the professor to get him the tickets to take his students to see it." Stroud stressed how the Discovery Series is "purely educational" explaining how this year they were opening it up for all students and the SLD office is offering a total of six Discovery Series.

He explained the office's plan to hold a Tunnel of Oppression. According to Stroud, the event would be a social justice event which could be on an oppressed race, gender, or sexuality, and throughout this event, the office's intent is to educate students who decide to enter the "tunnel" and open their eyes on certain issues which they may not know exists. Stroud emphasized however, that to get the event off the ground, the office needs to put together a committee, and the com-

mittee, consisting of faculty, staff and student organization members, would be in charge of putting together the event which would be both "passive and engaging."

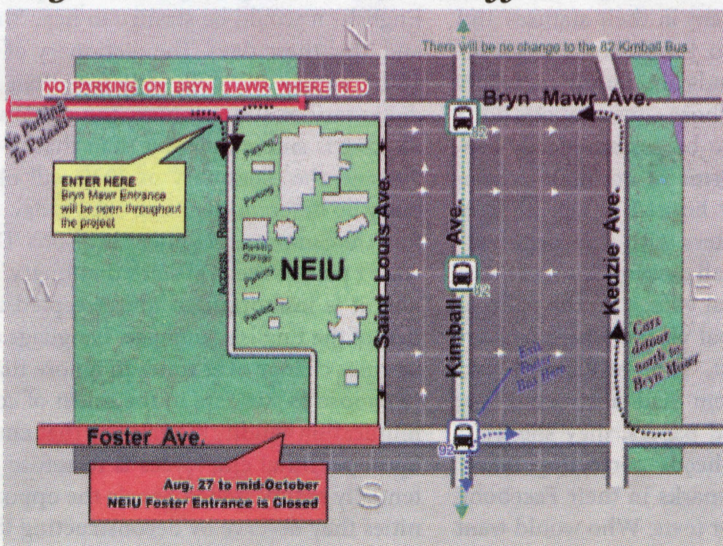
Another thing which the office wants to do this year is to expand the Spectrum Retreat. Stroud explained how the students wanted the annual retreat to be longer, versus one day. "We want to expand it from that Friday to Sunday, because that is what students wanted." Stroud shared his hopes for this upcoming school year. "We want to remain consistent, and to surpass what we did last year. I'm really excited to be working with Veronica and Tina again this year, but I am even more excited for the new office, which will now be a couple doors down, versus on the second floor of the Student Union."

He ended his interview with these following words: "We had a strong leader in Sharron [Evans], and we have another strong leader in Veronica [Rodriguez]."

SLD Coordinator Tina Garcia talked about some of the same upcoming events mentioned by Stroud but further added that events would reflect student leadership and allow students to be "reflective." Garcia also stated that students should keep their eyes and ears open for the Northeastern Programming Board. And so, with a new staff and office changes, students should look forward to a ton of new events and new opportunities to get involved on campus this school year.

Road Closure - Detour in Education

By Melissa Brand - Staff Writer



Graphic courtesy of NEIU

Construction will be winding down around most parts of the city in the next few weeks, except around Northeastern Illinois University (NEIU). During a three-phase construction job that started Aug. 4, 2012 and continues through October, Foster Avenue, one of the two main conduit streets NEIU students use to get to campus, will undergo major construction. Old sewers that date back to the 1920s will be replaced to help stop flooding issues in the area. The City of Chicago Department of Water Man-

agement stated that "in-house work will begin in late August, and we expect to be done installing the new sewer in mid-October. Restoration of the damaged streets/parkways will follow," in a memo dated July 10, 2012. This meant street closures and travel detours for most students and residents around NEIU just as the Fall semester started.

The City originally coordinated with Chicago Transit Authority (CTA) to reroute the 92 Foster bus to travel down Lawrence from Kimball to Pulaski until Oct. 10, 2012.

The bus stop closest to campus would have been at Kimball and Foster, potentially inconveniencing hundreds of NEIU students, employees and neighbors. Concerns were raised about students with disabilities that depend on the CTA being disproportionately affected by the rerouting. However, as of Aug. 27 the CTA rerouted the 92 Foster bus to stop much closer, near the intersection of Bryn Mawr and Central Park.

Besides the Foster Avenue detour, the plans included a parking ban on Bryn Mawr to ease the extra traffic flow. The Bryn Mawr parking ban went into effect on Aug. 22, 2012 and according to the posted signs, will remain until Sept. 22, 2012. NEIU students and employees that normally park on Bryn Mawr must find alternate parking or face tickets, towing and the hefty fines associated with them. According to an Aug. 8, 2012 memo from Mark Wilcockson, VP for Finance and Administration at NEIU, "A temporary Level II parking permit will be made available to the NEIU community for purchase during the duration of the closures." The temporary permits will cost a flat rate of \$35. Daily parking permits will

still be available for \$5 for those that drive only occasionally. Also during the week of Aug. 22, 2012, a new turn lane was created on Bryn Mawr to help the flow into the main campus entrance.

The initial work started on St. Louis at Foster and had St. Louis closed just past the WTTW building. The second phase started Aug. 14, 2012 which closed Foster from the east side of St. Louis to the east side of the NEIU access road. Originally, the Foster entrance was to remain partially open until Sept. 10, 2012 but in a campus memo released the week of Aug. 22, 2012, a change in the schedule was announced and the Foster entrance was to completely close as of Aug. 27, 2012. Dana Navarro, NEIU Director of Public Relations stated that during this phase, "There will be no access from Foster at all. Cars should use Bryn Mawr and allow extra travel time."

NEIU also released a second memo saying they were working with the City of Chicago to provide an additional option for people leaving the campus. Effective Thursday, August 30 at 9 a.m., vehicles may exit the main campus from the access road onto Foster

going westbound only. The NEIU Foster entrance will remain closed to all incoming traffic as well as outbound traffic toward the east. All dates of this project depend on the weather and any unforeseen challenges the construction teams may find.

NEIU will post signs and reminders with updates around campus, on the university's website and social media pages. The NEIU community should be alert to more traffic and changes in traffic patterns when driving or walking around campus.



Photo by Melissa Brand

OPINIONS

Editorial Board

Emily D. Haddad *Editor-in-Chief*
 Jacklyn Nowotnik *Managing Editor*
 Emily D. Haddad *News Editor*
 Syed Ahad Hussain *Opinions Editor*
 Gary Soriano *Arts & Life Editor*

Barbarella: Not Your Average Movie Experience

By Juan Manuel Gonzalez - Staff Writer

Old movies are still worth checking out. For example, Barbarella was first introduced into the world in 1962 as a small comic strip in a French magazine. As its popularity and notoriety increased, the artist of the comic, Jean-Claude Forest, decided that Barbarella should become a full-time outlaw. On Oct. 10, 1968, Dino De Laurentiis, Roger Vadim, and Jean-Claude Forest, released Barbarella worldwide and the world did not agree with Forest's decision to allow Barbarella to become a movie adaptation. According to the movie's IMDB page, the film made an estimated total of \$613,285, when it cost a roughly estimated \$9 million dollars to make.

After the film's release Barbarella has grossed more than \$5 million on rentals after the film came out. The film quickly became a cult classic, and several decades after its release it had a surge of sales. With its monetary intake aside, let's delve into the film itself. When first looking at the cover of the movie, and its off-handed description, one would mistake this for a

poorly done adult film, but beneath that, Barbarella, is really not that bad at all.

The film opens with a woman (later revealed to be the title character) floating in zero gravity in what resembles the fur of a bear, stripping. The scene, especially in zero gravity is quite riveting, because of how well the special effects appear on screen despite the fact that at that time they didn't have half of the technological advances we have today. After doing some searching one will find that they used a sheet of plexiglass, and shot the scene from above so that it mimicked the effects of being in zero gravity.

After being told of an evil scientist aptly named Durand Durand, (The last d is silent) she begins an unplanned journey to the planet of Tau Ceti and ends up crashing on an icy plain where she is held captive by harmless looking children with demonic and cannibalistic dolls which feed on the unsuspecting visitors who land in their domain. After she is saved, she rewards her savior with adult relations, after which she is dropped off at her crashed

spaceship beginning her journey to the city of Sogo. If one analyzes the name of Sogo, one's mind might think of Sodom and Gammorah.

Barbarella does a great job, for the most part, at remaining blind to the intentions of every pervert she encounters until she willingly provides Pygar, the last living ornithanthropes, with some "motivation" to get him to fly. After he regains his motivation to fly, they set off to the city of Sogo where she gets captured, again, and Pygar is bestowed the honor of becoming the great tyrant's plaything. After some horrible dialogue and very uncomfortable scenes, the Mathmos, the essence of evil which powers the city, is released trapping Barbarella and the great tyrant.

Apparently, Barbarella's "innocence" forms a bubble around Barbarella and the Great Tyrant and they fall to safety upon a floating rock where they find a passed out Pygar, Seran wrapped by his innocence. The film ends with them flying off into the sunset; and cue the tears. Despite its cheesiness, and its in-your-face sexual-

ity, the film is not that bad and will be watched again.



Courtesy of Google Images

Mark[ing] My Words...Virtually

By Syed Ahad Hussain - Opinions Editor

A recent discussion in class really got the old brain juices flowing. The professor gave students an article to analyze and discuss that was written by the CEO of a computer programming and software development company. The article outlined his practice of testing the grammar of job applicants by literally giving them grammar-based quizzes during the interview process. Applicants who failed the quiz are declined employment despite their exceptional academic qualifications and programming skills.

In the digital age where so much of a company's image is built through online interactions, it is understandable that people get laid off and are declined employment because of their Facebook and Twitter activities. But hinging an applicant's interview process on a grammar test for a job like computer programming, where a comprehensive grasp the English language is fairly unnecessary is scary. In

the near future will construction workers, bus drivers, janitors, contractors and exterminators have to take a grammar test too? Where are this country's employers heading with these nonsensical requirements? The tough economy already makes finding employment difficult. Now computer programmers have to memorize grammatical structures to be considered by inexplicably demanding employers when it isn't necessary skill for the job?

The debate in the class concluded on the sad fact that texting, and the virtual social network is creating a society of incoherent and just plain bad writers. Twitter, for instance has a character limit which causes users to exclude punctuation marks and abbreviate most of the words. Ironic is the fact that people tend to be humorous on a site like Twitter, which was only intended as a means to convey short and important messages to one's followers, not pointless jokes. While the site doesn't have

as short a character limit for statuses like Twitter, Facebook has become a place of irritating virtual comedy where sanity, respect, and tolerance often takes the backseat and grammar and style obviously ends up exiting through the back door.

Imagine Facebook and Twitter prompting users to be grammatically correct and not letting them post unless their sentences are free of grammatical errors. The number of accounts on both websites would be reduced dramatically within weeks, or maybe days. Do people have to be grammatically correct and coherent in their statuses and Tweets? Yes and no. People come to socialize with their friends and family members on Facebook and those conversations don't necessarily have to be grammatically correct. Mediated forms of communication; including but not limited to cell phones, iPads and computers with the social networking sites, are all developed on the idea of creating a global village on the palm of one's hand, a global village where conversations are direct, straight-forward and casual. If a student had a stressful day full of quizzes and papers, they shouldn't be boiling their heads correcting tenses and punctuation marks in their Facebook posts, tweet and/or texts. Who would want to live in such a world?

On the other hand, texting and virtual social networking is destroying the writing abilities of the general population. The article discussed in class lamented on how well-educated, groomed and trained graduates of today make major grammar mistakes implying the fact that they did not pay much attention to grammar rules in their academic life.

The fast pace of today's world is also partly to blame. People want to shout out on Facebook, twitter and in their texts as fast as they can and consume information even faster. Another possible explanation

could be the ever-increasing habit of multitasking. Today students work on a paper, post on Facebook, chat online and listen to music at the same time. Because of this multi-directional task management style, we tend to details can easily get overlooked.

After graduating any institution of education everyone should be an adequate enough writer to be understood. To expect everyone to use the exact same grammar and language lexicon ignores the natural evolution a language undergoes over time. People no longer speak Shakespearian English- it would be strange to hear 'thou' and 'thy' these days. The dictionary of the 18th century is totally different than the dictionary of 19th century. The dictionary of 2012 is surely different than that of the 90s and the dictionary of 2020 will obviously be different than one used today. Before the Simpsons, Homer Simpson's 'Doh' wasn't part of the Webster's dictionary, but now it is immortalized and accepted as a part of the English language. Language and its rules change over time- to ignore that is to choose to stagnate in the midst of communication fluidity. To impose that choice upon potential employees is to refuse potentially highly skilled people the opportunities they deserve by deconstructing their skills and value down to how well they diagram a sentence.



Photo by Emily Haddad

Letters to the editor policy

Letters to the Editor must be signed with an address and telephone number for verification. Submissions must not exceed 250 words. Letters are subject to editing for space and style at editor's discretion. The editor reserves the right to omit any work submitted. Letters are on a first-come first-served basis.

Send letters to: Independent, E-049, 5500 N. St. Louis Ave., Chicago, IL. 60625 or to: theneiundependent@gmail.com

Opinions expressed by contributors are solely the views of the individual writer, not the NEIU Independent Production staff.

Chick-fil-A or Nay?

By Melissa Brand - Staff Writer

Up until recently, most people in the Chicago area may not have known much about Chick-fil-A. The Georgia-based restaurant chain has 12 stores in Illinois with one location downtown that opened June 16, 2011. It is not surprising that most people had not heard about them until their President and Chief Operating Officer, Dan Cathy made headlines because of his comments related to marriage and family.

In an interview for The Baptist Press, Cathy stated, "We are very much supportive of the family -- the biblical definition of the family unit," Cathy said. "We are a family-owned business, a family-led business, and we are married to our first wives. We give God thanks for that." Although he never clearly stated that he was "against same-sex marriage" or that he was "anti-gay," his words hit the nerve of many people, starting with the LGBTQ community and their allies.

Prior to this issue, Chick-fil-A had been in the news for allegations of donating money to anti-gay charities and corporations. These corporations have not stated they are against same-sex marriage either, but are known for their over-the-top Christian beliefs and values. Chick-fil-A has always been vocal about their religious and family beliefs and even closes on Sundays. This goes back to 1946 when Truett Cathy, founder and CEO of Chick-fil-A, opened his first restaurant. According to the Chick-fil-A website, "The Closed-on-Sunday policy is reflected in the company's Corporate Purpose: To glorify God by being a faithful steward of all that is entrusted to us. To have a positive influence on all who come in contact with Chick-fil-A."



Image by Melissa Brand

further debates and boycotts.

In Chicago, first ward alderman, Joe Moreno voiced his concerns and originally wanted to stop the opening of a new store in the Logan Square neighborhood. "If you are discriminating against a segment of the community, I don't want you in the First Ward," Moreno said in a statement to the Chicago Tribune on July 25 earlier this year. "You have the right to say what you want to say, but zoning is not a right." A similar situation took place in Boston, but that mayor, Thomas Menino, backed down a bit.

Rahm Emanuel offered his support to Moreno. "Chick-fil-A values are not Chicago values," Mayor Emanuel said in a statement to the Chicago Tribune. "They disrespect our fellow neighbors and residents." The problem with these statements is that:

"If you are discriminating against a segment of the community, I don't want you in the First Ward," Moreno said in a statement to the Chicago Tribune

The line that separates topics like religion and personal beliefs, or freedom of speech and hatred toward a group has become dangerously thin. Just because someone is of a certain religious group, does not mean they are anti-gay, they just don't practice the same beliefs as that group. Just because someone is LGBTQ, doesn't mean they don't believe in religion or god. Somehow though, someone wrote a book and made it okay that a man marries a woman, but not okay for same-sex partners to marry. People can believe and speak about family units the way Cathy does; however, they need to understand that their words may be perceived as anti-gay and so must be prepared for the consequences, such as

1) The Mayor doesn't speak for everyone in Chicago and 2) The city does not have the right to block zoning applications. Sadly, any group has the right to open a business without being discriminated against. The city can't deny permits because it disapproves of the owner's use of his First Amendment rights. However, if a company is making a minority population feel "unwelcome, objectionable or unacceptable, they are in violation of The Illinois Human Rights Act under Section 5-102(B). Again, where is the line drawn? Cathy can have those First Amendment rights, but to what extent, without it becoming hate and discrimination?

Northeastern Illinois University (NEIU) Justice Studies Major and Senior Erin Hamilton agrees. "I was really happy that Moreno and Emanuel came out and let their views be known! They said they don't want that kind of prejudice coming into their city. I really appreciate that," Hamilton said. "It helps to have allies everywhere, especially in government. But I do believe it would be wrong to specifically deny - in fact, it would be illegal to deny people business rights just because of their beliefs. More specifically, one person in their corporation's beliefs. It's a very slippery slope."

Silich, she added, "Even with all of the negative press and protests toward Chick-fil-A, business continues to be steady."

Since his initial statement, Alderman Moreno has spoken with Chick-fil-A numerous times. Matt Bailey, a spokesperson for Moreno's office said, "We had a meeting with them a few weeks ago. We think it's in their interest to do some PR (public relations) damage control on their end. If they're willing to make some changes, we'll see where they're at."

If Chick-fil-A makes changes, the damage is done and the negative opinion that

"We are very much supportive of the family -- the biblical definition of the family unit," Dan Cathy in an interview for the Baptist Press

After the initial statements were released, boycotts were planned as well as a national "Chick-fil-A Appreciation Day." On Aug. 1, 2012 supporters of Chick-fil-A filled their restaurants to show their love for the company. Locally, some restaurants ran out of food and had lines around the building. The company reported record setting sales on this day, but would not release the total revenue amounts. Later that week, pro-same-sex marriage groups staged "kiss-ins" where gay couples went to Chick-fil-A restaurants and had make-out sessions in protest of Cathy's comments. NEIU junior, Erica S. says she loves all of her gay friends. "On a personal level, I am conflicted as to what I believe is right and wrong about this. I am a bible believing Christian and I think that my friends know that about me. I won't be boycotting Chick-fil-A because I love their food. I think it's terrible that the alderman is trying to block it. It's a very good business. They always have high revenue and they always have happy employees."

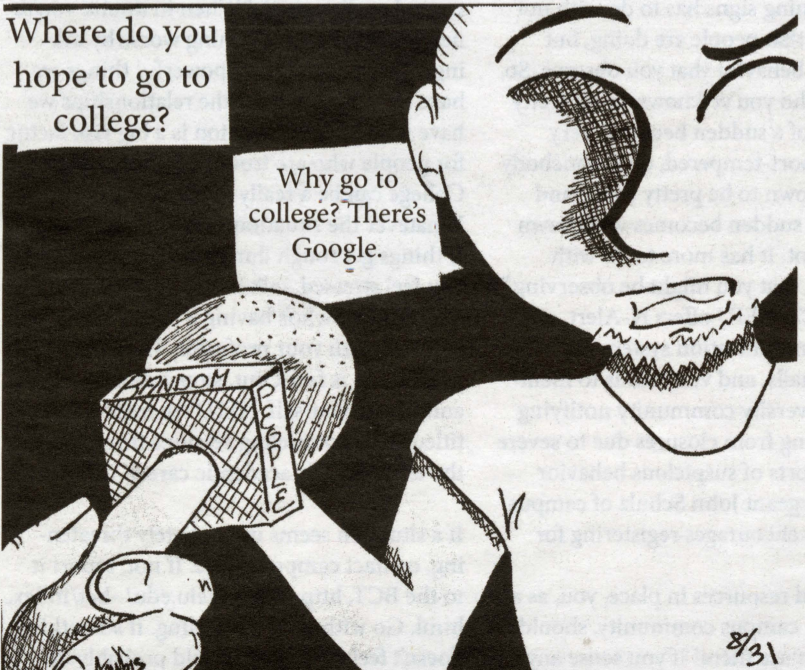
many people have about Chick-fil-A will likely not change. Hamilton said she still won't give them her money. "I think there's also a safety thing too. I wouldn't feel comfortable going into Chick-fil-A; just like I wouldn't be comfortable going into a Catholic church. Being who I am, and knowing not just what their beliefs are, but also because of the escalation on the political scale, the people who might be in there, what they really believe and I don't know what their actions are going to be."

In a canned response to the public, Chick-fil-A said the "culture and service tradition in our restaurants is to treat every person with honor, dignity and respect - regardless of their belief, race, creed, sexual orientation or gender. We will continue this tradition in the over 1,600 restaurants run by independent owner/operators. Going forward, our intent is to leave the policy debate over same-sex marriage to the government and political arena." Perhaps Cathy should lay off the chicken and have crow for his next meal.

Lauren Silich, Owner/Operator of the Chicago area location, Chick-fil-A Loyola Watertown, 30 E. Chicago Avenue, released a statement in response to Mayor Emanuel's comments. Not only did she invite the Mayor to come into the restaurant to meet her husband and staff, but she invited everyone to come in to see the type of people they are. Silich stated, "We are not a corporation - we are real people and taxpayers as each Chick-fil-A franchise is independently owned and operated. We are Chicagoans who are dedicated to serving our community. We hold fundraisers for hospitals, schools, fallen police and we donate to a wide variety of causes, including everything from churches to gay and lesbian organizations." In a phone call with

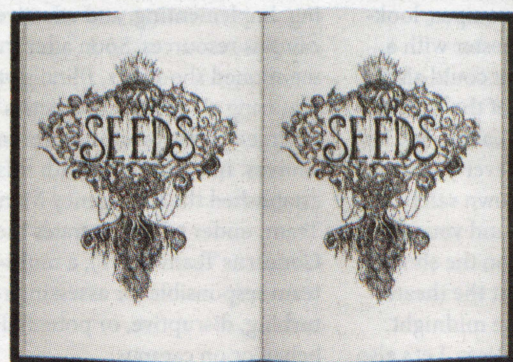


Image by Melissa Brand



Cartoon by Grace Caruvana

..Seeds.. Literary and Visual Arts Journal



Are you a writer or visual artist? Submit your work for our fall issue!

Deadline is Friday, October 12, by midnight. You may view submission guidelines and upload your work at <http://seeds.submittable.com/submit>.

Any questions, concerns, or comments, please contact Editor-in-Chief Linda Monacelli, L-Monacelli@neiu.edu.

Our next meeting is Thursday, 9/13, 3:05-4:05pm, ..Seeds.. office, E-035.

ADVERTISEMENT

Racism at University of Austin

By Christos Liardakis – Assistant Opinions Editor

The University of Texas (UT) at Austin has gotten itself into a very precarious position where it will be facing off in the Supreme Court against one Abigail Fisher, a hopeful white student recently denied admissions to the university. Many students are denied admission to universities all the time, but the issue that brought this case so much attention is that Ms. Fisher was not admitted because of her color.

All universities have a way of deciding who is and isn't admitted, in the case of the University of Texas; the first thing they look at is the student's graduating class rank. If they are in the top percentile, they are automatically granted admission. If not, they look at the student's AI score, a measure of grades and test scores. They

then look at something a bit more cerebral called the PAI score. All universities look at these numbers, the PAI evaluation is the only score that differs between universities.

The first part of a PAI score is a PAS score in which the prospective student writes two essays and submits them with the application, and then they look at six weighed factors: leadership potential, extracurricular activities, honors and awards, work experience, community service, and special circumstances. The first five factors seem easy enough to understand. It's the special circumstances that have everyone scratching their heads. According to UT, special circumstances include socioeconomic considerations and the applicant's

race is "a factor of a factor of a factor of a factor."

Yet even though this is such a small factor, UT stands by its statement that "It is impossible to tell whether an applicant's race was a tipping factor for any given admit." In the past UT proudly states that of "the 728 African-Americans offered admission to the 2008 class, 146, or 20%, were admitted through full-file review." That is exceptionally outside the top 10% policy and it is almost impossible for a fraction to the fourth degree to produce such outstanding results.

It is understandable that without these kinds of movements, disadvantaged minorities would find it harder to gain a proper education. But racial prefer-

ence towards one group over another still constitutes racism and just breeds more malice and racism. The main problem is not whether or not these disadvantaged minorities are able to attend college, but rather the problem is how our government and political agenda has failed to bring justice to those communities so that the disadvantaged can be prepared for college before they even reach the admissions process. It's 2012 everyone, and it's time politics stopped living in the 1950's and finally started asking the hard questions: "How poorly have we been serving the disadvantaged communities and minorities for all these years? And how can we better serve them without simply playing the race card?"

2016: Obama's America - A Hypothetical Future

By Patrick McIntyre - Staff Writer



Photo courtesy of Google Images

in this agenda-laced documentary aiming to evict Obama from the White House and witness his one-term. The electorate does not need this. No informed voter benefits from falsified generalizations to steer politics. The audience receives nothing more from this film than D'Souza's hypocrisy rampantly masquerading itself as factual and credible conspiracy theories.

The crux of the film lies in exposing Obama's true past and his resonating ambitions to torpedo America into third-world-country status as a result of his ravaging anti-colonialism, supposedly instilled by his father's absence in his life as well as left-wing mentors. D'Souza's primary curb while writing and producing this film, based on his previously published books, clearly depends on a lack of factual evidence to support claims—Obama's policies are intermittently discussed. Instead of factual information, the audience receives black-and-white representations of wildly complex, multi-faceted decisions and pursuits. Discussions involving Obama's middle-ground policies, policies far from the left, are abandoned by the narrative.

Fortunately for D'Souza, utilization of fact omission and double-standards fly right over less-discerning audiences' heads and pull them in. D'Souza claims that America isn't racist or sexist, that people

of color and women, compared to their white, male counterparts, have complete equal opportunities at success. We are encouraged to take D'Souza's words as gospel because of his Indian background. D'Souza's self-loathing, ignorant theories comply with our new racism of denying racism. While holding his hand up next to a black man's hand, he claims, "You can't tell the difference." He attempts to permeate American society with the idea that racism no longer exists in an effort to eradicate from our minds that racism still exists and permeates our society so he can use himself as proof of the endurance of the fabled "American Dream."

Inadvertently, the most intriguing aspect of the film becomes D'Souza himself. Who is funding this man's work to be the token Indian guy, propping himself up as proof anybody can win in America? His tactics are clearly deceitful, regardless of his conscious complicity. His actions and ideas directly contradict the ideas of freedom that he claims to be championing. Intolerant tones saturate the narrative, despite, once again, the use of himself as an example of an outsider. He fails to achieve validity in, for example, the demonization of the Muslim faith and its followers. is the most heinous form of D'Souza's insipidly exposed anti-multiculturalism. An image

depicting the "United States of Islam" in the Middle East closes the film, solely blaming Obama for this hypothetical and prejudiced scenario. Obama's sympathies for other cultures, not murderers, do not represent a complicity in terrorist sects banding together. Distrust of other cultures and religions because of stereotypes and generalizations tend to promote that path, Dinesh.

While facts have been overtly distorted on the campaign trail so far this year, 2016 is appropriate in complementing this tone, and is, unfortunately, discovering a following of like-minded, xenophobic fans willing to ignore vast amounts of information—these peons and inchworms long for D'Souza's skewed narrative to align with their own insulated and ignorant lives. While sifting through the drivel, an appropriate argument emerges when D'Souza's tactics are scrutinized, thus forcing an (ideally) informed electorate to analyze the detrimental affects of well-funded, agenda-driven propaganda documentaries. D'Souza's Prop-Doc is just one of many, from all sides, with vast exclusions—our body of voters has to be efficient at identifying these desertions of accuracy.

You are the Force Behind Campus Safety

Linda Monacelli – Staff Writer

So maybe you're fresh out of high school, new to college, and ready to explore and tackle the world of higher education. Or perhaps you're a professor on campus, looking forward to an exciting semester with a fresh batch of eager minds. You could also be an administrator, member of the maintenance crew, graduate student, barista at Cafe Descartes, or a librarian. Whoever you are, YOU are responsible for your own safety and the safety of everyone else around you. Let's take a moment to reflect on the shooting that happened in late July at the theater in Aurora, Colorado during the midnight premiere of *The Dark Knight Rises*. Let's also not forget the campus massacres at Virginia Tech and NIU. A year after the Virginia Tech tragedy, Eric Thompson, who sold the .22-caliber semiautomatic handgun to Seung-Hui Cho, gave a speech at Virginia Tech advocating for students to be able to carry concealed weapons on campus for protection. He even offered discounts. Is this the answer to ensuring safety on col-

lege campuses? Allowing students to carry weapons?

I believe the answer lies largely in establishing, implementing, and effectively utilizing campus resources. Soon after the aforementioned shootings, Illinois passed a law requiring all public universities to create emergency response and preventative resources. In accordance with this law, NEIU established the Emergency Management Team, under which operates the Behavioral Concerns Team (BCT), a multi-disciplinary team responsible for assessing reports of disturbing, disruptive, or potentially dangerous behavior on campus.

In order for the BCT to do its job, we as students, faculty, and staff need to be the eyes and ears on campus. We need to be aware of "red flag behaviors" such as withdrawal and isolation, anger management issues and being regularly disruptive in class. According to BCT member and Assistant Director of Student Health and Counseling Services Dr. Alina Viola, "red flag behaviors" vary

from person to person. "Often the way we talk about warning signs has to do with not specific things that people are doing, but changes in the behavior that you observe. So, if somebody who you've known to be pretty easy-going all of a sudden becomes very irritable and short-tempered, or if somebody who you've known to be pretty social and relaxed all of a sudden becomes withdrawn and isolates a lot. It has more to do with shifts in things that you might be observing." Besides the BCT, NEIU offers N-Alert, an emergency communication system that sends texts, emails, and voicemails to members of the university community notifying them of anything from closures due to severe weather to reports of suspicious behavior on campus. Sergeant John Schulz of campus police strongly encourages registering for N-Alert. With such solid resources in place, you, as a member of the campus community, should not be afraid to use them! If you sense any suspicious behavior, don't hesitate to report

it! Reach out to someone who seems distressed or disturbed. "When in doubt, you're not going to make anything worse by asking....Some of the most powerful things we have in our arsenal are the relationships we have with people. Isolation is a big risk factor for people who are troubled," Viola advised. College can be a really stressful time. Whatever the situation, you are not alone. If things get rough during the semester and you feel stressed, talk it out. You're not the only student who's having a hard time. Stay in touch with your professor. The worst thing you can do is freak out, stop communicating, and isolate yourself. NEIU students are entitled to 50 counseling sessions throughout the term of their academic career.

If a situation seems immediately threatening, contact campus police. If not, report it to the BCT, <http://www.neiu.edu/~bct/index.html>. Go with your gut feeling. If something doesn't feel right, you should probably do something about it! The force is with you!

Arts & Life

Arts & Entertainment

NEIU Student Spotlight: Laura Nieves

By Gary Soriano – Arts & Life Editor

Northeastern Illinois University (NEIU) student and Northeastern Programming Board's (NPB) Arts and Entertainment Chair Laura Nieves keeps her plate full. As a senior majoring in Studio Art, her knowledge and passion for the arts is extensive and her long list of achievements precede her.

Some students at the university may find it hard to find their own niche. Nieves is no different. "I've been to four different colleges and Northeastern is the one that has allowed me to blossom as a student," Nieves said. She dances, sculpts, performs poetry, has conducted workshops and hosted a number of events at NEIU since 2010.

As NPB's Arts and Entertainment Chair, Nieves and the rest of the team are promoting several events this month. One in particular is in collaboration with the Student Government Association's (SGA) Constitution Day, taking place on Sept. 25 in Alumni Hall. As part of SGA's Constitution event,

NPB will host! Live Latin@! from 7-10 p.m. featuring three performances: Award-winning and globally recognized Mexican Folklore Dance Co. will perform traditional Mexican dances in corresponding attire, all-female musical ensemble Las Bompleneras and the Vida Bella Ensemble performs award-winning off-Broadway play *The Brown Girls*.

Nieves is also part of the Northeastern Hip Hop Organization (NH2O) where she has hosted events, most recently the 1st Annual Nest Fest that took place in May and conducted workshops (U.N.I.T.Y. Culture Event, Nov. 2011). NH2O, in collaboration with the Southwest Youth Collaborative, more popularly known as the University of Hip Hop, will host a break dancing battle on Sept. 29 at NEIU that also features live performances, live art and a special guest DJ.

Even with all of her involvement on campus and homework, Nieves still finds time to nourish her passions. She finds time to

paint, write poetry and contribute monthly at Subteranean where she break dances with her team at an event titled "I used to love h.e.r." The event, takes its name from a song by Chicago hip hop artist Common and features live acts by female hip hop artists from around the city.

Nieves is well-connected to her roots as she dances Puerto Rican folk dances, Bomba and Plena. She describes these dances as cultural and having an influence from the African, Spanish and indigenous presence in Puerto Rico. Her roots expand past her Latina identity into the realm of hip hop, using it to inspire her poetry and break dances.

"It's always been part of who I am," Nieves said. She hopes to graduate in 2014 and will continue expressing herself and her passions in the arts.



Laura Nieves - Photo by Emily Haddad

New Department, New Director: Sharron Evans Heads Student Rights and Responsibilities

By Linda Monacelli – Staff Writer

Former Director of Student Leadership Development (SLD) Sharron Evans is now the Director of Student Rights and Responsibilities (SRR), as of July 1. The SRR office, B-129, is located within B-119, in the B building, between the computer lab and Pedroso Center.

The Student Rights and Responsibilities office was created as part of a restructuring process initiated in January 2012 by Vice President of Student Affairs Frank Ross. The new department has absorbed certain initiatives previously handled by the Dean of Students office. According to Evans, the Dean of Students office embodied a "potpourri of programs and initiatives that didn't really fit under what a Dean of Students or conduct office should be." Thus, the Dean of Students office was shut down, and a new department with a new name, that is, Student Rights and Responsibilities, was established and set to operate with a more narrow focus.

The two main initiatives of the SRR office include regulating student conduct and creating campus community standards. Evans pointed out that although the university has values, it has not established official standards pertaining to "what is expected of people in the community in order for this to remain a conducive institution of higher education for people to learn, for people to explore and for people to flourish."

As far as how Evans' current position compares to her previ-

ous position, Evans explained that it is quite different. As director of SLD, she oversaw programming and leadership training initiatives serving student-led extracurricular organizations. The SRR office deals more directly with student behavioral issues and students' rights and expectations on campus. "We are the 'complaints' department, so to speak, for our students because they have certain rights at the university and we want to help them ensure that those rights are respected," Evans said. "But also they have certain responsibilities to the community and so we also hold them accountable for when those responsibilities are not upheld."

Evans is also one of four core members of the Behavioral Concerns Team (BCT), a multi-disciplinary initiative established two years ago in compliance with the 2008 Campus Security Enhancement Act of Illinois. This federal mandate, organized by the state in response to the Virginia Tech and Northern Illinois University campus shootings, prompted NEIU to create an Emergency Management Team, under which the BCT operates.

The three other core members of the BCT include Veronica Rodriguez, director of Student Leadership Development; Dr. Alina Viola, assistant director of Counseling Services; and crime prevention coordinator Lieutenant Paul Kruszynski of campus police. Together, the BCT responds to and assesses cases of alarming or



Sharron Evans - Photo courtesy of Graphic Art Center

erratic student behavior in order to prevent grave disturbances and violence on campus.

On June 28, 2012, Student Affairs introduced the Involuntary Student Withdrawal Policy which states:

"Northeastern Illinois University reserves the right to involuntarily withdraw a student whose behavior suggests a significant risk of harm to self or others. Involuntary student withdrawal may or may not include plans or contingencies that condition the return of a student to the university." Sharron Evans explained that this policy is a precautionary measure that NEIU would take in the event that a student's behavior were to threaten his or her own

safety or that of others.

The policy defines concerning behavior as falling into one of three categories: dangerous, disruptive or disturbed. If a situation proves immediately dangerous and life-threatening, campus police should be contacted without hesitation. If a student seems disturbed, repeatedly behaves in a disruptive manner, or shows signs of being a threat to the safety of the campus community, the student should be reported to the BCT at <http://www.neiu.edu/~bct/>. The BCT would then assess the case and conduct an investigation. The results of the assessment and investigation determine the ultimate course of action. If involuntary withdrawal

should be necessary, the director of SSR would send the student a written notice of the decision, and the student would have five business days to petition it.

The SRR office is committed to keeping NEIU's campus safe and maintaining it as an environment conducive to studying, learning and growing. The SRR office is also dedicated to developing and maintaining campus community standards. Students are encouraged to contact the office with any questions, comments or concerns regarding the initiatives of SRR. Sharron Evans may be contacted by phone at (773) 442-4610 or email at SM-Evans@neiu.edu.

It's a Small Town After All

By Sean Dotson - Staff Writer

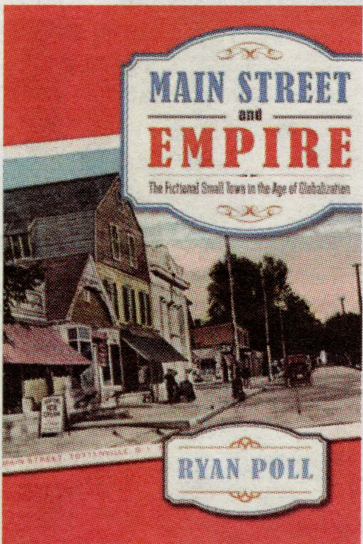


Photo courtesy of Google Images

Northeastern Illinois University (NEIU) English Professor Dr. Ryan Poll's book, *Main Street and Empire: The Fictional Small Town in the Age of Globalization* attempts to showcase the American small town as not just a geographic location, but an ideological fiction that exists in forms as varied as the books of Sinclair Lewis, Thornton Wilder's *Our Town*, and Walt Disney's *Main Street, USA*. The book of literary criticism, published by Rutgers University Press, is his first published book. Dr. Poll suggests that the fictional small town provides an ideological framework for the expansion of American cultural and economic practices into the 21st century. In a recent interview with the Independent, Poll discusses this notion.

What motivated the book?

I've always been really interested in the intersection of literature, culture and politics. I think literature is at its most ideological when it functions as this contained, autonomous space, where we pretend literature doesn't exist as part of the wider world. I was reading about Ronald Reagan, just being angry about what he was doing; even though I was too young to appreciate it when he was in office. I began thinking about how important Dixon, Illinois was to his campaigns, and for a series of speeches he gave where he was lambasting welfare, saying, "Dixon doesn't need welfare." This idea of the small town becomes a model of the nation. Knowing Illinois, I knew Dixon was more an industrial city than a small town. It made me think: why is the small town so important? Then, going back politically, I found that every presidential candidate since Lincoln has used the image of the small town to appeal to the American people. I'm like, "this was a total fiction." So I started at this political moment, and because I recognized it as fiction, I wondered if literature helped create or contribute to this ideological fiction. And in fact I think it does. It shows the power of fiction in structuring social and political imagination.

Could you go over some of the ways our capitalistic way of life can fall within the definition of an empire?

I'm very much interested in this linking that seems counter-intuitive, that Main St. seems very distant from thinking of the U.S. as an empire. I'm sort of following Edward Said, among many other critics of empire. Said said, in *Culture and Imperialism*, that he's always shocked by the United States, as opposed to European empires such as France, Spain, and England where there was this celebration of empire; the U.S. Empire exists with this public denial: "Of course we're not an empire! We may be a global force, but we're a benevolent force." The central national image of the

"Every presidential candidate since Lincoln has used the image of the small town to make themselves appeal to the American people."

small town helps to conceal that we are a global power by imagining us as a contained island form that exists separately from the rest of the world. Sarah Palin is an easy example, but when Barack Obama took office he had a White House to Main St. tour. It's not like "I'm going to Pennsylvania or Southern Illinois," it's "I'm going to Main St."

It's all these subtle ways the [small town] imaginary is perpetuated.

The small town system doesn't just obscure the machinations of Capitalism; it also helps to replicate them on a global scale.

I'm thinking about how the small town as a frame becomes a celebration of consumption, ideologically divorced from production and distribution. Walt Disney's *Main Street, U.S.A.* became a model for consumption, as a lot of cultural geographers have pointed out. It became the model for the construction of shopping malls; this contained space where we're able to shop and not think about where commodities come from. It's a narrative framed by this ideological small town.

Yes. That's really the heart of creating the ideological small town; where we can think of not being responsible or even a part of a globalizing world. I think that's a central attribute of the U.S. Empire; that we're this innocent, benevolent force whereby you can't ask questions about consequences or social relations beyond U.S. borders.

A critical perspective you suggest as an alternative is "critical regionalism." What is critical regionalism and how can it help us look beyond Main St. or to see Main St. better?

When literature was created as a discipline, the organizing principle was the nation, so you read every literature as an expression of the nation. You still see that on campus: American Literature X to Y, English Literature, etc. Everything's organized by the nation. I think what's really important is to start thinking about spatial relations: alternative ways to organize literature, to return it to material spaces, and what a difference that would make. Critical regionalism moves us away from the nation as a paradigm and it makes us more creative and critical about how we group texts together.

Summer Scene Recital Ends on High Notes

By Jacklyn Nowotnik - Managing Editor

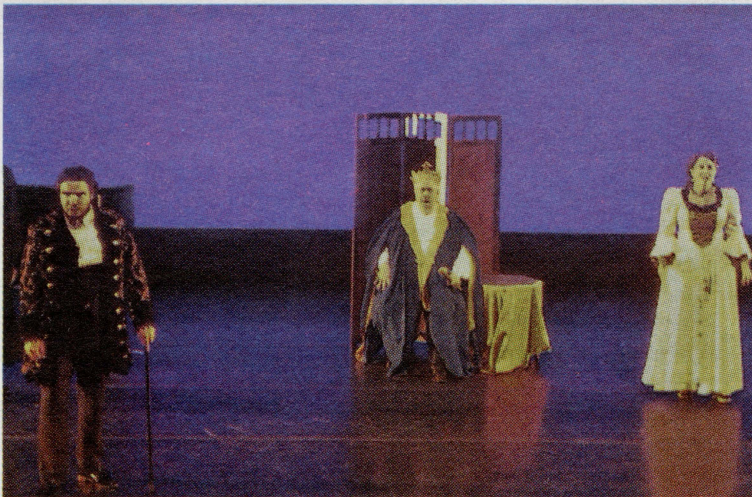


Photo by Jacklyn Nowotnik

For the first time ever, the Northeastern Illinois University (NEIU) music department fea-

tured a summer opera scene recital. Scenes included full-sung Italian pieces by Mozart, Bellini, Donizetti

and Verdi. NEIU faculty member and director, Sasha Gerritson felt that it is "important for students to have a safe, constructive learning environment that challenges them where they are today and encourages them to grow towards the singer/actor they aspire to be." As a way of doing so, the NEIU music department has established a production schedule that alternates between a modern opera sung in English, a modern musical theatre piece, a standard opera piece sung in its original language, and a standard musical theatre piece. In between bigger productions, the music department works with Gerritson and the students enrolled in her performance class to put on scene recitals,

which the department feels adds to their students' musical experience.

Since scene recitals are not one of the four bigger productions, the recitals are performed with minimal stage furniture and props. The recitals also lack the participation of an orchestra, as well as the supertitles that most operas have on top of the stage to translate the sung language. The scene recitals at NEIU do include full costume, piano accompaniment by NEIU music faculty and a student narrator.

Unlike past scene recitals, this opera scene recital had a select few undergraduates and graduates in the music department set as cast members. These students also worked with Lucia Marchi, an Ital-

ian diction coach. Before the show, Gerritson mentioned that this scene recital would be a great way for students to gain experience in performance and singing in Italian.

A couple of familiar names in the program included Mozart's *Le Nozze di Figaro* (The Marriage of Figaro) and Verdi's *La Traviata* (The Fallen Woman). If the big names were not enough, a scene even had a performance by former NEIU Music Professor Ronald Combs. NEIU's music department has not yet announced what their spring musical theatre production will be, but they do welcome fellow faculty and students to attend their annual fall scene recital in November.

The Art in Making a Difference

Desiree Dylong - Assistant Arts and Life Editor

When walking through the streets of South Lawndale, in Little Village, one can see traces of graffiti lining public property. To some, the paint from the aerosol cans may be a mark from a delinquent; a kid who, just like plenty of those before him on Chicago's west side, is headed towards a life of crime. But to the individuals who began the LuchArte project, the graffiti presented the idea to channel art in a positive way. LuchArte is a community-based project that is changing the lives of Latino youth, one painting at a time.

It started with Eddie Bocanegra,

a student studying social work at Northeastern Illinois University (NEIU). Bocanegra understood the dire and violent situations that Latino youths faced in South Lawndale and wanted to present neighborhood kids with a positive outlet that would steer them away from a life of violence. His love of art, and also meeting kids who enjoyed tagging up walls led to the idea of creating a program that would provide an artistic outlet for youth.

Bocanegra sought out NEIU Assistant Professor of Social Work Dr. Francisco Gaytán for guidance and a helping hand in getting the

project started. LuchArte eventually teamed up with local nonprofit called Enlace Chicago to provide a location in Little Village for the kids to have their art sessions.

Dr. Gaytán explained how many of these young teens that Bocanegra sought out to be in the art program were just on the cusp of joining gangs. He also explained the harsh circumstances these kids face in their daily lives such as coming from single parent households, having siblings who have joined gangs, and going to schools that don't offer them the resources that will allow them to excel. With the combina-

tion of all the hardships that these kids go through, the LuchArte programs offer them a chance to participate in productive and creative activities and to see their true potential.

The LuchArte program has artists from all levels and not only does the program offer a creative outlet, it also offers youth the chance to sell their artwork. What's more important is that these kids are given an opportunity to express themselves, and due to the limited resources their neighborhood and schools provides them, LuchArte gives them the chance they may

have otherwise never gotten. It's also the camaraderie and the support that helps to lift these kids up. Dr. Gaytán described how the sessions provide the kids a "safe space" where they can have fun, be creative and receive positive attention from adults.

LuchArte will begin sessions again in September and welcome volunteers. Interested in volunteering with LuchArte? Feel free to send an e-mail to Dr. Gaytán at f-gaytan@neiu.edu

Tuscan Bean Soup for the Soul

By Joseph Daddario – Staff Photographer

Tuscan Beans with Rosemary

This is one of my favorite soup recipes. This is a soup that allows you to throw in any vegetable you have and just let it simmer for a couple of hours resulting in a delicious homemade soup. If you need a hearty soup for the fall season, this is the soup for you!

- 1 Tablespoon olive oil
- 3 Ounces pancetta, chopped
- 1 Large red onion
- 4 Cloves garlic, minced
- 2 Sprigs rosemary
- ¼ Cup whole parsley leaves
- ½ Teaspoon salt
- ½ Teaspoon pepper
- 1 28-Ounce can tomatoes
- 2 19-Ounce cans white kidney beans or cannelloni beans

Optional: ½-1 lb Ditalini pasta

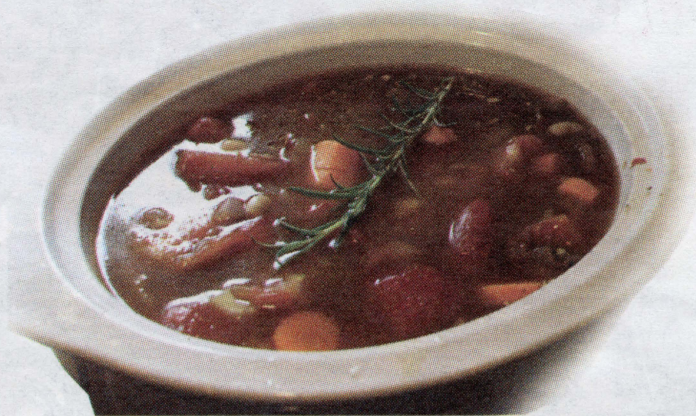


Photo by Joseph Daddario

In a skillet over medium-high heat, brown the pancetta and onion. Add garlic, rosemary, parsley, salt and pepper. Sauté for 1 minute. Stir in tomatoes and bring to a boil. Break up tomatoes. Cook for two minutes. Meanwhile, add beans to slow cooker. Pour tomato mixture over beans; stir well. Add ½ cup water. (This is where you can add the pasta) Put cover on. Cook for 8-10 hours or on high for 4-5. Serve in a bowl. Add parmesan cheese if desired.

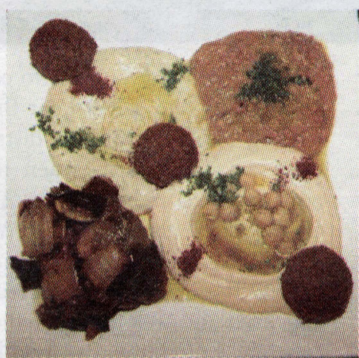
Dawali Kitchen Serves Home Cooking

By Brisa Becerril - Production Staff



3.5 Stars

Photo courtesy of Dawali



Dawali's Mediterranean Kitchen at 4911 N. Kedzie boasts gluten-free food and veggie options, which is good news for anyone on a gluten

free or vegetarian diet! Tucked into the corner of a small plaza on the corner of Kedzie Ave. and Ainslie St. in Albany Park, Dawali's has free parking in the lot and a welcoming atmosphere. Dawali's is casual, serving the big university community that surrounds it. It's a good place to go if you have a long break between classes and are looking for a place to study or read.

This was my first time eating Mediterranean food, so I was excited to try the food. The waitress was really nice and attentive. However, she got the order wrong and came back with the beef kabab, instead

of the lamb we ordered. No biggie though, because the beef was the bomb. I went with my son and mom and Dawali's is kid-friendly! However, I don't recommend going there, or anywhere for that matter, with an eleven-month-old; you won't be able to fully enjoy your meal.

The falafel appetizer was great. It was crispy and had the right amount of seasoning. The iced tea was okay, but it came from a fountain drink dispenser. The spinach and lamb bread pies we ordered were good, but they could have been crispier. We went with the combina-

tion choice, which included several meat choices, basmati rice, grilled veggies, pita bread, and sauce. We chose the chicken shawerma and the lamb kabab. Everything was seasoned well, but the chicken shawerma was a little dry. The lamb kabab order never arrived; instead beef was served. It was good and juicy but not what was ordered.

We didn't order dessert because they didn't accept a coupon we had. Apparently, they don't accept the "Buy \$35, get \$25 off" coupon anymore, which was a shame because I was really looking forward to the crème brulee that their web-

site advertises. So for all the food we ordered, we paid around \$35, counting the tip. The portions they serve are big, but for \$35, I expect better food quality. Also, the actual menu at Dawali's differs from the one online. The desserts are not on the menu and neither are the drinks. That threw us off when we ordered because we already had an idea of what we wanted. When we got there, we had to switch things up a bit.

Overall, I had a good experience and I wouldn't mind going back. Perhaps next time I'll be able to try the desserts.

The Flying Swords of Dragon Gate

By Linda Monacelli – Staff Writer



3.5 Stars

Photo courtesy of Google Images



Jet Li stars in the latest film by Director Tsui Hark *The Flying Swords of Dragon Gate*. The film, a 3-D remake of King Hu's 1967 *Dragon Inn* and Raymond Lee's

1992 *New Dragon Inn*, is considered a wuxia film. The genre wuxia, literally "martial hero," and films of this genre center on the adventures of martial artists/warriors. Typically, the heroes in Chinese wuxia fiction do not serve a lord, wield military power or belong to the aristocratic class. They are often from the lower social classes of ancient Chinese society and are usually bound by a code of chivalry that requires them to right wrongs, especially when the helpless or the poor are oppressed. The wuxia hero fights for righteousness and seeks to remove an oppressor, redress wrongs, or attain retribution for past misdeeds. This type of character compares with the samurai of Japan, chivalrous knights of medieval Europe and cowboys of the American West.

The film takes place during China's Ming Dynasty, and the nation is divided into two governing bodies, the West and East Bureaus, who answer to the Emperor. *Flying Swords* opens with a cool 3-D panning over a shipyard leading to a fortress where we meet the corrupt leader of the West Bureau Wan Yulou (Gordon Liu). Jet Li soon enters the picture as Zhao Huai'an, the leader of a small guerrilla group that monitors and acts against the corrupt activity of the West and East bureaus.

East Bureau leader Yu Huatian (Chen Kun) plots to find and kill outlaw warrior Zhao Huai'an after an incident in the opening scene. However, this does not prove easy since another outlaw is running around posing as Zhao Huai'an. We soon discover who the doppel-

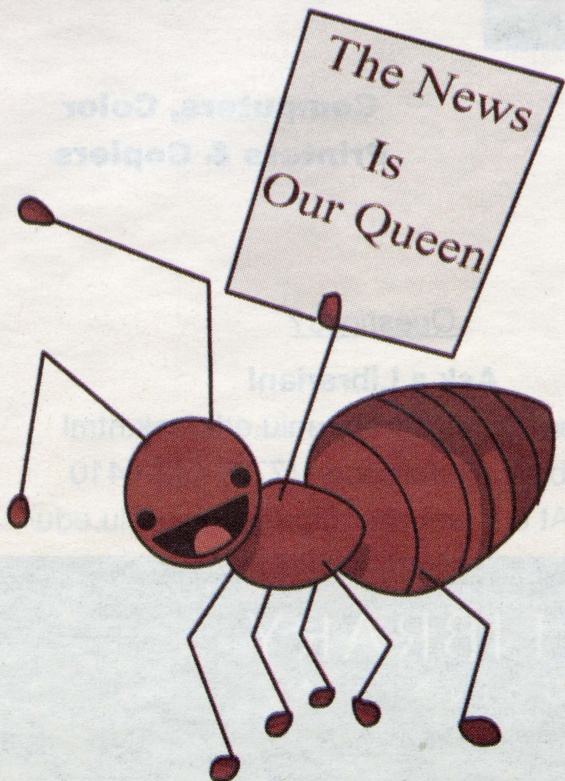
ganger is. The doppelganger first appeared while rescuing a concubine from the emperor. The two are now on the run from Yu Huatian and his army and soon end up hiding at Dragon Gate Inn where the majority of the story and action takes place.

Dragon Gate Inn is known as a "black inn" where many brawls take place and sometimes human flesh is served. A great sandstorm is approaching, and the innkeeper tries to close down the place and move to a safer location, but a group of Yu Huatian's men arrive and insist on staying in order to track down the concubine. Also staying at the inn are tough Princess Buludu (Guey Lun-Mei) and her Mongol gang, and female warrior Gu Shaotang (Li Yuchun) soon arrives with her crew of bandits, which includes

Wind Blade (Chen Kun), who bears a striking resemblance to Yu Huatian.

A sub-plot soon surfaces wherein we learn that the approaching sandstorm only occurs once every 60 years, and when it hits, it will unveil the ruins of an ancient city. Princess Buludu and Gu Shaotang's respective crews are actually plunderers who anticipate raiding the palace for treasure. Meanwhile, the real Zhao Huai'an (Jet Li) shows up. Plots and characters mingle and swords soon start flying—people start flying, too!

With a gripping storyline, mesmerizing acrobatics, surreal sword-fighting, strong acting, and, of course, 3D effects, this film is definitely one to check out, especially for enthusiasts of wuxia, martial arts, and/or Eastern culture.



**Come Join the Independent and
be a staff member
Room: E-049
theneiuindependent@gmail.com
773-442-4577**

ADVERTISEMENT

Image by ARENA NET



Guild Wars 2

By: Christos Liardakis – Assistant Opinions Editor

As we begin our new semester ArenaNet has officially launched Guild Wars 2 on August 28, 2012. An MMORPG (Mostly Multi-player Online RPG) based of the original guild wars game, there are lots of expectations and after participating in the Beta, it is safe to say this game will not disappoint.

Guild Wars 2 still takes place in the fantasy world of Tyria, 250 years after the original Guild Wars game. After the defeat of the Great Destroyer in the original game, the awakening of five elder dragons wreak havoc on mankind and all the other races featured in Guild Wars Prophecies, and in its expansion Eye of the North. Guild Wars 2 also features a new race, the Sylvari, which has emerged 25 years

after the elder dragons started to awaken. With 250 years gone by since the original game, even when you are in familiar places, they all look vastly different, with improved technology, new apparel and all the races using a global language; the Guild Wars 2 setting is almost unrecognizable from the original.

Along with a new setting, ArenaNet has vastly modified the game. The gaming engine has been updated with advanced real-time 3D environments, enhanced graphics and animation and the new Havok physics system allowing for more realistic interactions between players and the environment. The uniquely low level cap of 20 isn't there anymore either, replaced with a level 80 level cap ArenaNet has

made sure there is much more to do than ever before. When playing, you can gain experience from crafting, quests and even something as simple as exploring the area where you are located so suddenly a level 80 cap does not seem so unreasonable.

All these changes come with a highly simplified combat system where gamers will only rely on their weapon for their first 5 combat abilities, with the six key being reserved for healing, 7- 9 reserved for skills that are unlocked as you progress in the game, and 0 being reserved for elite skills that you can unlock after level 30, the complex and overabundant skill system of the original Guild Wars has now been replaced with a simplified development sys-

tem that emphasizes quality over quantity. As simplified as it sounds there is also a "combination" system added into the game adding much more complexity than previously experienced in other games. Also, there is no "kill stealing" famously found in other MMOs. As a matter of fact in most cases, random helpers are welcome. Everyone is going to get their fair share of experience or reward if some random hulking behemoth spawns in the middle of a map. No one gets a "bonus" for finding it first. As a matter of fact, with the new combination system it is almost expected of large groups to come together to take down such challenges.

With new graphics, a new combat system, and a new story; Guild

Wars 2 is definitely a game to consider for all the gamers out there looking for something to distract them as school starts when they need some rest and relaxation. A lot of people will also find Guild Wars 2 to be very friendly to new gamers as well. There is no need for macros and even the well-known tedious experience of crafting is smoothed out into a more fun and enjoyable experience. There were a lot of expectations of Guild Wars 2 and it has delivered in every aspect. Best of all, even with all the improvements and changes to the old system, it is still free to play once you buy it.

Welcome NEIU Students!

Check out all the Library has to offer!

Chat with a Subject-Specific Librarian

Multimedia Learning Resource Center (MLRC)

MS Office & Adobe Creative Suite

Group & Individual Study Spaces



Get Research Help

Borrow & Request Library Materials

Wi-Fi Hotspot

Computers, Color Printers & Copiers

We are here to help!

Main Library Hours:

Monday-Thursday — 8:00am-10:00pm
 Friday — 8:00am-5:00pm
 Saturday — 9:00am-5:00pm
 Sunday — 9:00am-9:00pm

Questions?

Ask a Librarian!

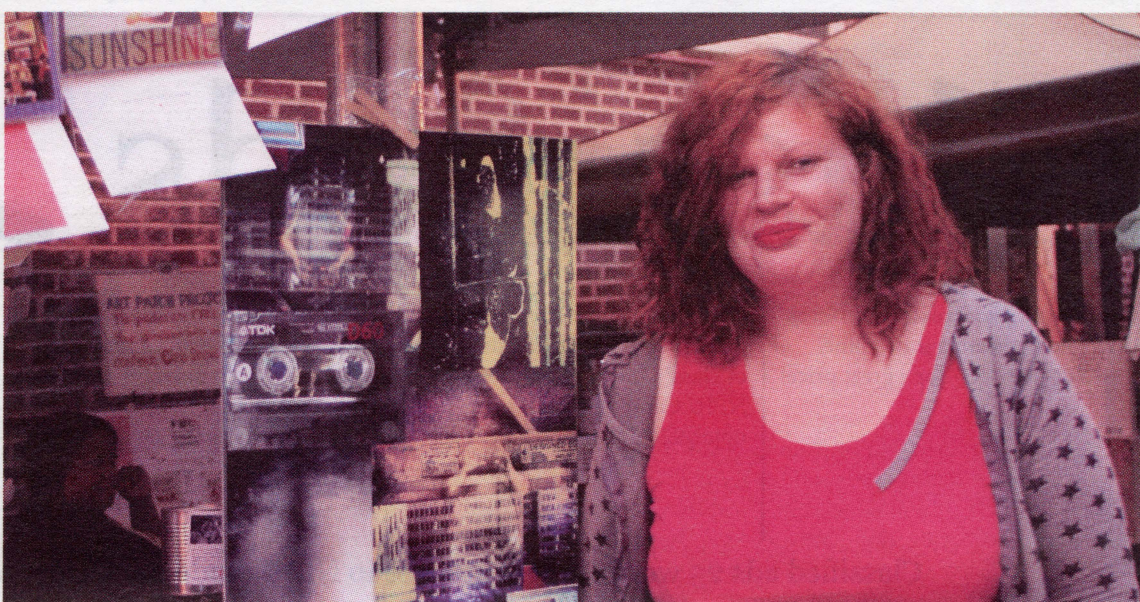
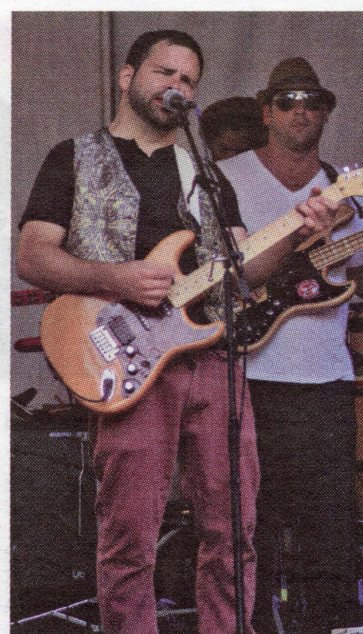
More here: <http://library.neiu.edu/ask.html>
 Main Library Reference : (773) 442-4410
 By Chat : At our website <http://library.neiu.edu/>

RONALD WILLIAMS LIBRARY
 Northeastern Illinois University

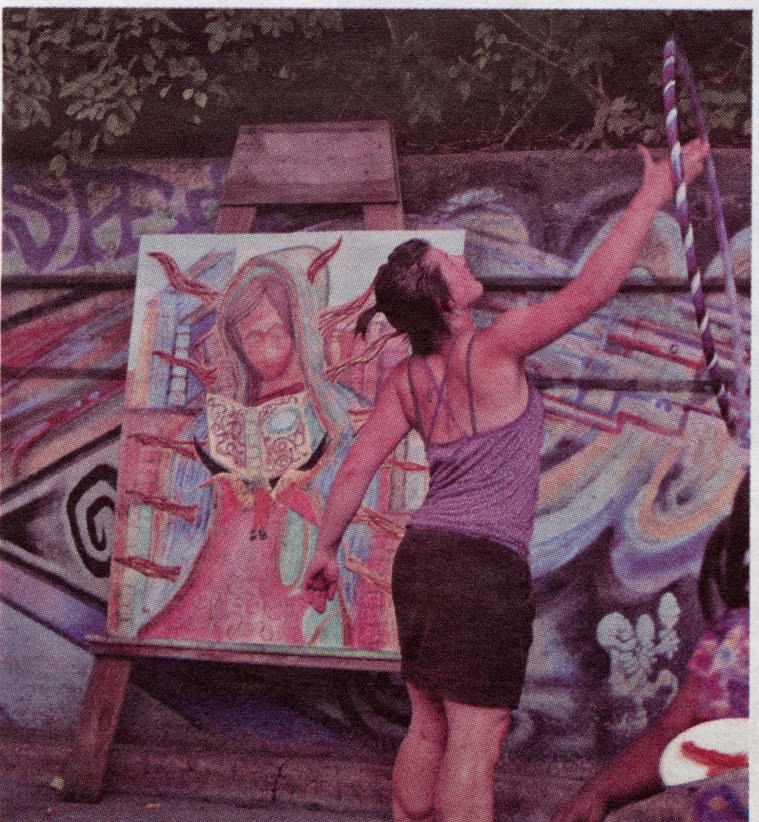
ADVERTISEMENT

NEIU Student Glams Up Glenwood Arts Fest

By Janean L. Watkins – Staff Writer



NEIU students Simone A. Bruch and Cristobal Castro



Flirtatious, amusing, and undeniably blunt greeting cards by NEIU Sociology student Simone A. Bruch filled a rented space at this year's Glenwood Ave Arts Fest. Bruch and her friend Eti Berland have loved greetings cards, and have been creating their own under the name 'ironwoman cards.' The Glenwood Ave Arts Fest was held in Chicago's Rogers Park community. Over 50 businesses and organizations came together to sponsor the event. The festival was complete with interactive artwork for the kids, and the lovable puppet bike. Patrons were able to shop, enjoy live music and even have a \$10 chair massage by one of the massage therapists of Rogers Park Center for Massage Therapy.

LGBTQA Resource Center: Building Awareness

By Juan Manuel Gonzalez – Staff Writer

Graphic by Nicholas Joly



The Lesbian, Gay, Bisexual Transgender Questioning and Allied (LGBTQA) Resource Center is the first of its kind here at Northeastern Illinois University (NEIU), and Director Anthony Papini can't wait to show NEIU what he has in store for this exciting new school

year.

After the opening of the Pedroso Center in June of last year, many under-represented groups on campus rallied for a space to call their own, and now a year later their visions are coming to fruition. Papini's excitement and dedication

is evident. His goals for the new year mainly center around "outreach and visibility. "If at the end of the year, students find the LGBTQA Resource Center to be a safe, comfortable place to hang out and we build awareness on campus about issues related to sexual orientation, gender identity, and ally development then we did a good job!"

When the question of what the center will be doing further into the future, Papini responded that he "would like to see the center grow and match the needs of the university, which might include hosting an LGBTQA Research Symposium, working with alumni of NEIU to develop a scholarship for queer-identified students, or seeing the center doing greater outreach into the community to help increase

recruitment and retention of LGBTQA students."

Papini has planned a Big Gay and LBTQA Picnic on Thursday, Sept. 6, which is a part of Fall Into Fun week as well as an "amazing Guest Speaker for National Coming Out Day" on Oct. 11. Along with these major events, the center will be hosting regular coming out support groups, as well as transgender/queer discussion groups, held weekly. Papini looks forward to working with the Pedroso Center and other outlets in order to help promote awareness of the center and those involved. "We absolutely are going to collaborate with the other Resource Centers – after all, it is the five Resource Centers that make up the Pedroso Center. It's at the root of who we are as a division

and department. We are all interested in exploring the intersection of identities and want to challenge NEIU students to think about their own identities as well as the identities of other members of the community." To which he added "After all, everyone has a sexual orientation, a gender identity, and a racial or ethnic identity!"

Papini encourages anyone interested in learning more about the center to visit their facebook page which can be found by searching for NEIU LGBTQA Resource Center, as well as their website at:

www.neiu.edu/~cdia/LGBTQ_Resource_Center.html

Classifieds



Typing and proofreading services available to meet your deadline. Call 312-409-1557 for a great price!

Got a big presentation coming up? Want to wow the board room or class? Graphic Designer on NEIU Campus at reasonable rates! npjoly92@gmail.com

George Henry Photography. Work at www.georgehenryphoto.info. Specializing in portraits, and event photography. georgehenryphoto@mail.com or 773-449-7311

Over 60 My Little Ponies for sale. Vintage, from 1980s! Used condition. Email for pictures. ponysplo-sion@gmail.com

FOR SALE - 1996 Buick Roadmaster Limited Station wagon with 96000 miles. No rust, great condition. 7,000 obo. Call 773-631-7939

Classified ads 25 words or less are free to NEIU students, faculty and alumni additional words 25 cents each

Welcome Back LGBTQA Students

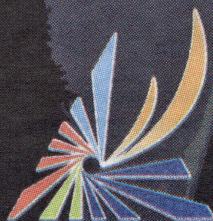
The new LGBTQA Resource Center would like to welcome back all NEIU students! Later this semester, we will be opening our new space in the B Building!

In the meantime check out our Facebook page at

[Facebook.com/NEIUIgbtqRC](https://www.facebook.com/NEIUIgbtqRC)

You can also contact us and learn more about coming out support groups, educational programs, and other stuff the center is doing by emailing

LGBTQA@neiu.edu



NORTHEASTERN ILLINOIS UNIVERSITY
ANGELINA PEDROSO CENTER
For Diversity & Intercultural Affairs

Ocean's 1 - Big Splash

Joseph Daddario - Staff Writer

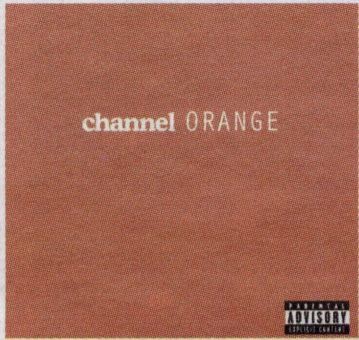


Photo courtesy of Google Images

Frank Ocean has made a splash, pun intended, with his debut studio album Channel Orange. This R&B/neo-soul album does not disappoint. It mixes different styles such as jazz-punk, pop-soul and electro-funk to give it an original one-of-a-kind sound. The album covers subjects such as unrequited love, spirituality, desire, and decadence. Ocean's songwriting integrates empathic lyrics, dreamlike

imagery and descriptive narratives to really draw the listener into his songs. With the advent of iTunes and the ability to buy a single song off of an album, I feel artists have ditched the idea of having an album full of great songs and now focus on dropping an album with 2 to 3 great songs with the rest as just filler. Ocean's album does not follow that rule. Overall, the album has 3 to 5 songs that are just plain amazing,

Thinkin' Bout You and *Crack Rock* being personal favorites. Although I suggest you don't sing the chorus of *Crack Rock* while you're walking down the streets like I have. You'll get some pretty strange looks. This is the type of album that you could put on repeat and listen to it while you're doing some chores, or cooking, or just relaxing. You never have to worry about skipping a track or hearing that one song on the album

you don't like. Compared to his previous work, Ocean still delivers a smooth sound and great beats. All the songs on this album definitely raise the bar for his next album. To learn more about Frank Ocean, visit him at: <https://www.facebook.com/thefrankocean>

Cab Drivers and Dream Chasers

By Desiree Dylong - Assistant Arts and Life Editor

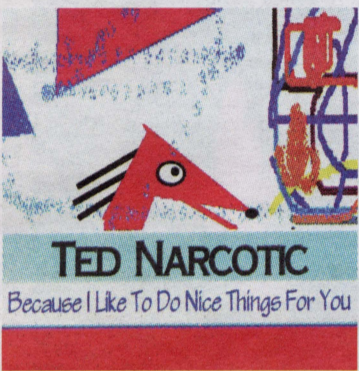


Photo courtesy of Ted Narcotic

fellow staff members of the Independent.

This random circumstance makes for an interesting story, but what makes it even better is that Ted Narcotic's album is an experience within itself. At first listen, his off key sing-talk vocal style is reminiscent of musical figures like Lou Reed and Jonathan Richman. His use of power chords and the audio that sounds like it was recorded in his garage is also what gives the album its nostalgic proto-punk/garage rock sound from the '60s. But after fully listening to tracks like *Because I Like to Do Nice Things for You*, and *I Want You Feel You*, listeners can experience how Narcotic is not just an imitation of those who came before him. His lyrics are what really set him apart as they lend a sense of humor, but also a fresh take on song writing. In *Because I Like to Do Nice Things for You*, he expresses his desire to

do nice things for someone he cares for. One line in particular goes, "If your car was all dirty and it was covered with bird poop and alcoholic puke, well I'd go ahead and I'd get some soap and some hot water and I'd wash it down/ I'd wash it up and clean it, and I'd do it just for you/ 'Cause I like to do nice things for you." At first listen, the phrases of "bird poop" and "alcoholic puke" may bring forth a chuckle and may even make you wonder how sober Ted actually was while writing the song. Sober or not, Narcotic manages to write a new and refreshing type of love song. There are countless love songs that express the same sentiment of how one would go leaps and bounds for their significant other. Yet few songs reach the random yet creative lyrics that Narcotic accomplishes. How many songs out there talk about a guy cleaning up puke and bird poop for a girl simply because he likes doing

nice things for her? It's a fresh take on the expected lyrics one hears in love songs. Anyone who likes to wonder, "How does he come up with this stuff?" when they listen to music, will enjoy Ted Narcotic.

Other than his lyrics, it's also what Ted Narcotic represents that makes the album. Ted is a man who works hard driving a cab but

still pursues his music. He's among the everyday people who brave it out and try their hardest to achieve a goal despite any risk of failure. Whether or not Ted Narcotic ever achieves any fame is not important; what's important is that he attempted to. To learn more about Ted and to hear his music, go to www.ted-narcotic.com.

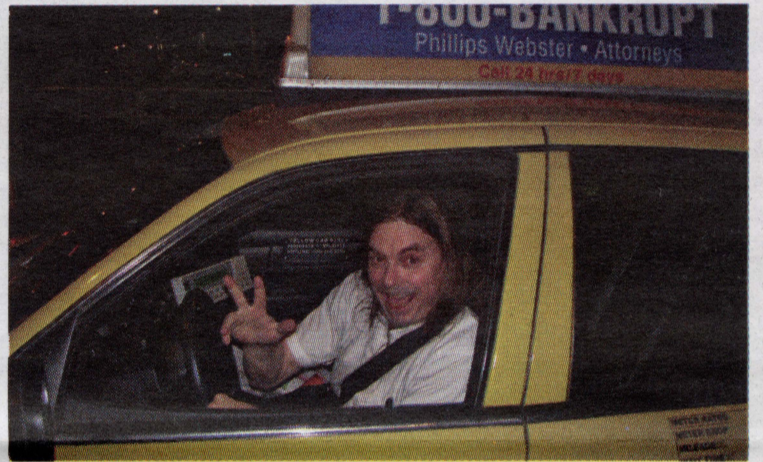


Photo by Emily Haddad

Hot New Garbage Album

By Joshua Mueller - Contributing Writer



Photo courtesy of Google Images

a sluggish third album sale, a few lengthy gaps between albums and their share of label conflicts.

So how does a band that has survived so much make their return to the music scene? By writing an album tailored specifically for the fans that gave them their initial success. *Not Your Kind of People* is Garbage's fifth album, but one would be forgiven for mistaking it for their earlier work. Garbage's third and fourth albums were considered a departure from their first two albums; first venturing into the pop realm with their third album, then into a low-tech rock environment with their fourth album. *Not Your Kind of People* brings Garbage back to their roots with their signature dirty-production rock

and their sound is as refreshing as their debut 17 years ago! Fierce, tender and as unique as ever, *Not Your Kind of People* is a firm testimony that Garbage hasn't suffered any loss of style in their absence.

The album opens with the fast-paced and far-too-catchy *Automatic Systematic Habit*. A thick groove is pumped into *Control*. Sugar offers up a vulnerable vocal performance and a sexy bass line. *Battle in Me* channels Garbage's famous rocking femme fatale side. And the album is punctuated by the touching and uplifting *Beloved Freak*. Steve Marker's unique riffs are refined and rich. Duke Erikson's siren-like guitar work is irresistibly charming. Shirley Manson's

smoky and sultry vocal work offers up the same seductive appeal that has made her a regular name amongst the great female vocalists in rock. But the most admirable performance comes from legendary producer/drummer Butch Vig, who has ventured away from the rock and roll beats that we are all familiar with and has evolved into new territory. His updated arsenal helps set the band apart from the new generation of bands that Garbage helped inspire more than a decade ago.

My glowing admiration aside, the album is not perfect. The heavy-production value serves as a double-edge sword that will serve to make *Not Your Kind of People* difficult to perform live. Shirley's vo-

cal work finds itself drowned out in some of the more intense moments of the album. But the biggest mark against the album is probably found in the mid-album song *Felt*, which comes off as a phoned-in effort at a '90s grunge salute.

Not Your Kind of People is a rock-solid album, with few holes and even fewer dull moments. The band that can survive anything has shown that they can take it all in stride, and do it with style. Whether you were a fan of their youthful efforts or their more recent projects, you will not find yourself disappointed with their new album.

You need Money and we need production staff.

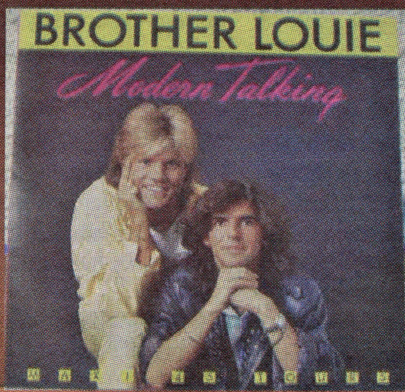
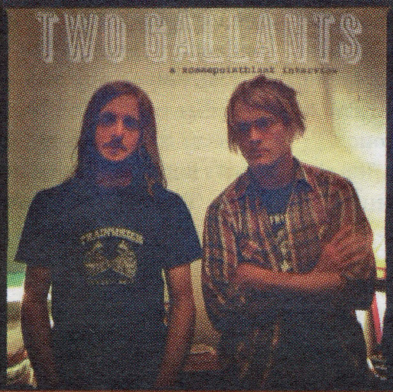
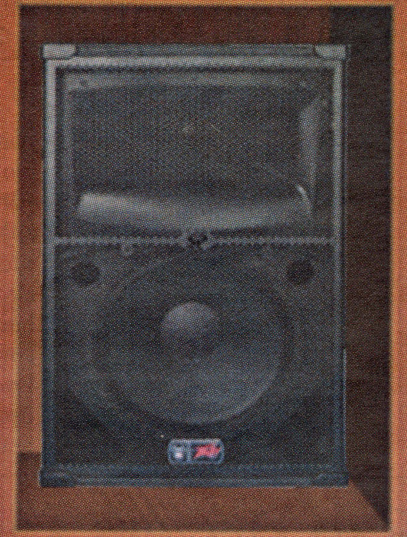
Seems like the ideal symbiotic relationship

E-049

feedback.neiuintdependent@gmail.com

ADVERTISEMENT

Music Playlist



Juan Manuel Gonzales – Senior, English, NEIU Distribution Manager

1. Everybody Talks – Neon Trees
2. Rolling in the Deep – Adele
3. Ship of Promises – Villagers
4. Don't Leave Me (Ne Me Quitte Pas) – Regina Spektor
5. Pay Phone – Maroon 5

James Koo – Junior, Biology

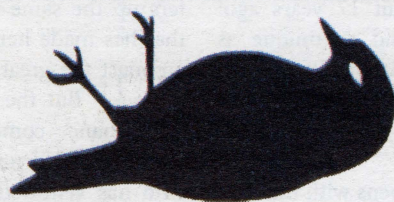
1. The Last Fight by Bullet for My Valentine
2. Invincible by Adelitas Way
3. Hurt by Johnny Cash
4. Hold Your Breath by Matt Darey ft Leah
5. Find Yourself by John O'Callaghan ft. Sarah Howell

Urszula Wudarczyk – Senior, English and CMT, Seeds Editor

1. Brother Louie - Modern Talking
2. Bem Bem Bem Maria - Gipsy Kings
3. (Just Like) Starting Over - John Lennon
4. Midnight Blue - ELO
5. Mr. Bad Guy - Freddie Mercury

Aaron Leiva – Senior, English/Secondary Education, President English Honors Society

1. Reflections of the Marionette – Two Gallants
2. In the Summertime – Mungo Jerry
3. Coffee Blues – Mississippi John Hurt
4. I'd Rather Go Blind – Etta James
5. Mahna Mahna – The Muppets



Bird Flu Viral Videos

Never Say No To Panda!!!

<http://www.youtube.com/watch?v=kUwihfjQXAw>

Gary Soriano, Arts and Life Editor, English/Secondary Education

Baby Laughing Hysterically at Ripping Paper

<http://www.youtube.com/watch?v=RP4abiHdQpc>

Karen McHale, English/Secondary Education

Laina Walker as Overly Attached Girlfriend <http://www.youtube.com/watch?v=9qXdgpmgaNg&feature=g-crec-u>

Rachel Deahl, Vice President of Seeds, English

Kurtis Blow- Basketball

http://www.youtube.com/watch?v=_shxzITRK44

Linda Monacelli, Staff writer, President of Seeds, English/Secondary Education



- Memento (2000)
- 50/50 (2011)
- A Clockwork Orange (1971)
- Margin Call (2011)
- History of the World: Part I (1981)

