

Detecting translational regulation by change point analysis of ribosome profiling data sets

ANZE ZUPANIC,^{1,2} CATHERINE MEPLAN,³ SUSHMA N. GRELLSCHEID,⁴ JOHN C. MATHERS,¹
TOM B.L. KIRKWOOD,¹ JOHN E. HESKETH,³ and DARYL P. SHANLEY¹

¹Centre for Integrated Systems Biology of Ageing and Nutrition, Institute for Ageing and Health, Newcastle University, Newcastle-upon-Tyne, NE4 5PL, United Kingdom

²Department of Environmental Toxicology, Eawag: Swiss Federal Institute of Aquatic Science and Technology, 8600 Dübendorf, Switzerland

³Institute for Cell and Molecular Biosciences and Human Nutrition Research Centre, Newcastle University, Newcastle-upon-Tyne, NE2 4HH, United Kingdom

⁴School of Biological and Biomedical Sciences, Durham University, Durham DH1 3LE, United Kingdom

ABSTRACT

Ribo-Seq maps the location of translating ribosomes on mature mRNA transcripts. While during normal translation, ribosome density is constant along the length of the mRNA coding region, this can be altered in response to translational regulatory events. In the present study, we developed a method to detect translational regulation of individual mRNAs from their ribosome profiles, utilizing changes in ribosome density. We used mathematical modeling to show that changes in ribosome density should occur along the mRNA at the point of regulation. We analyzed a Ribo-Seq data set obtained for mouse embryonic stem cells and showed that normalization by corresponding RNA-Seq can be used to improve the Ribo-Seq quality by removing bias introduced by deep-sequencing and alignment artifacts. After normalization, we applied a change point algorithm to detect changes in ribosome density present in individual mRNA ribosome profiles. Additional sequence and gene isoform information obtained from the UCSC Genome Browser allowed us to further categorize the detected changes into different mechanisms of regulation. In particular, we detected several mRNAs with known post-transcriptional regulation, e.g., premature termination for selenoprotein mRNAs and translational control of *Atf4*, but also several more mRNAs with hitherto unknown translational regulation. Additionally, our approach proved useful for identification of new transcript isoforms.

Keywords: ribosome profiling; translation regulation; change point analysis; mathematical modeling

INTRODUCTION

Recent studies have shown that only 30%–60% of the variation in cellular protein levels can be attributed to gene expression levels (Tian et al. 2004; Vogel et al. 2010). The remainder is most likely due to post-transcriptional regulation, including mRNA transcript-specific regulation of translation and protein degradation (Cho et al. 2006; Brockmann et al. 2007; Sutton et al. 2007; Sonenberg and Hinnebusch 2009; Rogers et al. 2011). While translational regulation occurs largely during initiation (Richter and Sonenberg 2005), recent experimental and computational studies have discovered that regulation of elongation also plays an important role, by means of *cis*-regulatory elements on the transcripts, codon bias, or mRNA structure (Arava et al. 2005; Dittmar et al. 2006; Kudla et al. 2009; Tuller et al. 2010; Leprivier et al. 2013).

Ribosome profiling (Ribo-Seq)—a technique based on deep-sequencing of mRNA regions protected by ribosomes, which provides the positions of ribosomes on the entire transcriptome (ribosome profiles)—has enabled the study of translation regulation at the genome-wide level (Ingolia et al. 2009, 2012). Analysis of Ribo-Seq data sets using novel bioinformatic algorithms led to the identification of *cis*-regulatory elements that control the speed of elongation (Ingolia et al. 2011; Stadler and Fire 2011; Li et al. 2012), the sequence of events in miRNA regulation of translation (Guo et al. 2010; Bazzini et al. 2012), and new translation initiation sites (TISs) (Ingolia et al. 2011; Lee et al. 2012). The full scope of ribosome profiling studies is presented in a recent review (Ingolia 2014). A recent study of proteotoxic stress revealed a decrease in ribosome density on ribosome profiles of affected mRNA transcripts (Liu et al. 2013). However, despite biological relevance, to date no systematic genome-wide search for changes in ribosome density has been performed.

Corresponding authors: daryl.shanley@ncl.ac.uk,
anze.zupanic@eawag.ch

Article published online ahead of print. Article and publication date are at <http://www.rnajournal.org/cgi/doi/10.1261/rna.045286.114>. Freely available online through the RNA Open Access option.

© 2014 Zupanic et al. This article, published in *RNA*, is available under a Creative Commons License (Attribution 4.0 International), as described at <http://creativecommons.org/licenses/by/4.0/>.

The aim of the present work was to develop a computational approach for detecting translational regulation, especially regulation during elongation, from ribosome profiles. We started from the assumption that most translational regulatory events (e.g., ribosome stalling, alternative termination, or alternative initiation) cause changes in ribosome density along the translated mRNAs. After determining by mathematical modeling that it is theoretically possible to discriminate between different forms of translational regulation based on the patterns of ribosome density, we used a change point (CP) algorithm (Erdman and Emerson 2008) to find changes in ribosome density within ribosome profiles using Ribo-Seq data generated for mouse embryonic stem cells (mESCs) (Ingolia et al. 2011). This analysis detected many mRNAs with known translational regulation, as well as new translational regulation targets of alternative termination, alternative initiation, and ribosome drop-off. In addition, the analysis revealed the presence of several new transcript isoforms.

RESULTS

Simulation of protein synthesis and translational regulation

To analyze the effects of translational regulation on protein synthesis and ribosome profiles, we built a family of totally asymmetric simple exclusion process (TASEP) models of protein translation (Fig. 1; Supplemental File 1; Lakatos and Chou 2003; Shaw et al. 2003). The models include two species: mRNA molecules with N codons and (an infinite pool of) ribosomes of size L codons. Free ribosomes bind to the available initiation codon of the mRNA at rate k_I , before progressing along the mRNA at a codon-specific rate k_{Ei} ($i = 1, 2, \dots, N$) and leaving the mRNA at the last codon at rate k_T . Each ribosome is allowed to progress only if there is no steric hindrance from the ribosome in front. Additional reactions, some of which have not been addressed previously with TASEP models, include scanning past the canonical TIS to an alternative

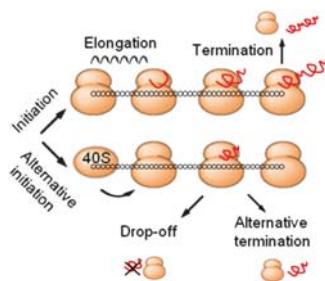


FIGURE 1. TASEP model of translation. Model reactions include canonical translation—i.e., initiation by free ribosomes at the canonical TIS, codon specific elongation, and termination at canonical termination site (with production of full-size peptide)—and additional translational regulation events, i.e., alternative initiation downstream from the canonical TIS, ribosome drop-off, and alternative termination.

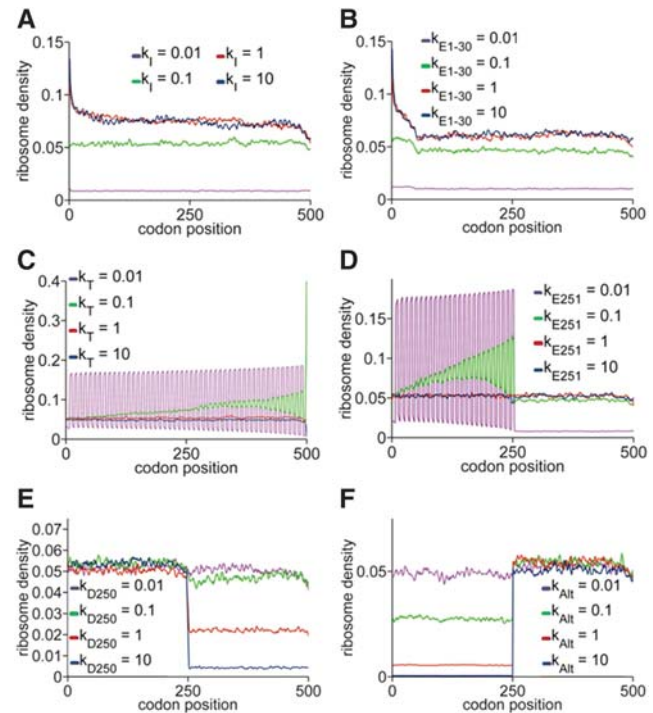


FIGURE 2. TASEP simulations of translational regulation. Ribosome density along the mRNA coding region for different rates of (A) canonical initiation, (B) elongation of the first 30 codons—ramp, (C) termination, (D) elongation of a central codon, (E) ribosome drop-off, and (F) alternative initiation downstream from canonical TIS. Unless stated otherwise, $k_{Ei} = 1$, $k_I = 0.1$, $k_T = 1$, $k_{Alt} = 0$, $k_{Di} = 0$. For all simulations, $N = 500$, $L = 10$, $n = 100,000$ (number of samples taken from the simulation).

TIS in the coding region of the mRNA (CDS) at rate k_{Alt} and ribosome drop-off or alternative termination at rate k_{Di} .

Depending on initiation, termination, and (codon-specific) elongation rates, different regimes of elongation are possible, which result in significantly different protein synthesis rates and different ribosome profiles (Lakatos and Chou 2003; Shaw et al. 2003). If, at first, we assume the elongation rate is codon independent, then at low initiation rates the mRNA is sparsely populated by ribosomes, and the protein synthesis rate is low. Increasing initiation rate increases ribosome density and protein synthesis, until steric hindrance between ribosomes prevents a further increase (Fig. 2A; Supplemental Fig. S1). Conversely, slow termination leads to low protein synthesis as a result of ribosome queuing; increasing termination eliminates the queues. Any further increase in termination does not change the density of protein synthesis (Fig. 2C; Supplemental Fig. S1). The oscillations apparent for low k_T are due to a queue of ribosomes spanning the length of the mRNA (Fig. 2C).

If the elongation rate is codon dependent, there are several possible scenarios. Slow codons at 5' positions have effects similar to slow initiation; slow codons at 3' positions, effects similar to slow termination (Supplemental Fig. S2). Slow codons in the central region of the CDS, with elongation rates

higher than the initiation rate, cause a peak in the ribosome profile at their respective positions; lower elongation rates cause a queue behind the stalled ribosome, with few ribosomes in front; and, finally, at very low elongation rates the queue reaches to the first codon and begins to limit initiation (Fig. 2D).

A special case of putative regulation of ribosome progression along the mRNA is the “ramp,” a stretch of the first 30 to 50 CDS codons that are more likely to include rare codons, which was discovered by ribosome profiling in yeast and further investigated in a computational study of codon bias (Ingolia et al. 2009; Tuller et al. 2010). Decreased elongation rates of the first 30 codons are associated with increased ribosome density (Fig. 2B). Nevertheless, since similar increased ribosome density is also predicted when initiation rates are high and elongation rates normal (cf. Fig. 2A,B), rare codons may not in fact be the cause of the ramp. Alternatively, the “high initiation rate” ramp may be caused by boundary effects of the finite TASEP and occurs if translation is occurring at close maximal coverage of the mRNA with ribosomes. Since the ramp associated with rare codons can occur at any coverage, we propose that measuring ribosome coverage could be used to differentiate between the two possible natures of the ramp and the corresponding mechanisms.

We also found that all other simulated cases of translation regulation had significant effects on ribosome density, indicating that the analysis of changes in ribosome density could indeed lead to identification of translationally regulated mRNAs. Alternative initiation results in a step-like increase in density, while ribosome drop-off and alternative termination result in a step-like decrease (Fig. 2E,F).

CP algorithm robustly detects translation regulation from in silico generated data

After performing the simulations, we tested whether the CP algorithm could detect the changes in ribosome density in computationally generated ribosome profiles. In brief, the algorithm detects points along the length of the mRNA where the ribosome density is changed, while ignoring the effects of noise (see Materials and Methods). If the change is abrupt, the CP position can be determined very exactly, while for slower changes, one or more CPs may be detected with larger positional uncertainty. Although the algorithm can detect very small changes, in this work we limited the search to only those changes that were >33%, and so, only CPs most likely to include strong translation regulation were included in the analysis.

The CP algorithm provided a robust method for detecting changes in density for all the translational regulation modes that we tested. A single slow elongation codon, slow termination, alternative initiation, and ribosome drop-off/alternative termination all led to step-like changes in ribosome densities and were also detected as such. Slow termination and slow elongation that led to ribosome stalling, and queues were de-

tected as oscillations in ribosome density (with the caveat that, for detecting ribosome queues, different algorithm parameters had to be used; see Materials and Methods). The minimum/maximum parameters at which CP detection was robust are presented in Supplemental Table S1, with example outputs from the CP analysis in Supplemental Figure S3.

Bias in ribosome profiling

The next step was to use the CP algorithm to detect translation regulation events in a Ribo-Seq data set. We chose a recent mESC study (Ingolia et al. 2011) because it included both Ribo-Seq and RNA-Seq data sets obtained from the same cell culture. A recent analysis of a different Ribo-Seq data set from the same study indicated that ribosome flux increased along the translated mRNAs (Dana and Tuller 2012). This implied that more ribosomes translated the 3' regions of the CDSs than the 5' regions, a feature that is inconsistent with current biophysical models of translation. Since such a ribosome profiling bias would likely result in a high number of false positives detected by the CP algorithm, we decided to search first for potential bias in our data set.

From the combined Ribo-Seq/RNA-Seq data set, 8933 well-expressed mRNA transcripts were selected with high enough signals in both Ribo-Seq and RNA-Seq (Supplemental Table S2). The averaged ribosome and RNA-Seq profiles of the 8933 highly expressed mRNAs confirmed the presence of bias in the data sets. The ribosome density was highest at initiation and termination codons and then dropped toward the middle of the CDS. However, unexpectedly, the central region of the CDS exhibited higher ribosomal density than the 5' and 3' ends (Fig. 3A). It should be noted that this bias toward high ribosome density in the central region of the CDS is much more apparent if the analyzed mRNAs are normalized according to the length of their CDS before averaging ribosome density, rather than if ribosome density is averaged for the first and last 50 codons, as was done in the original Ribo-Seq study (cf. Fig. 3A and Supplemental Fig. S4; Ingolia et al. 2011). Importantly, the average ribosome profile matched the average RNA-Seq profile very well, suggesting that the ribosome profiling bias is caused by a factor common to Ribo-Seq and RNA-Seq. Indeed, dividing the average ribosome profile with the average RNA-Seq profile results in a ribo/RNA average profile that is consistent with current biophysical models of translation in which ribosome density decreases slowly from the initiation to the termination codon as a result of either very low-level spontaneous ribosome drop-off (Kurland 1992; Arava et al. 2005) or a slight increase in ribosome speed (Fig. 3A; Bonderoff and Lloyd 2010; Dana and Tuller 2012). When we fitted the TASEP model to the normalized ribosome profile, a ribosome drop-off rate of 0.3% best predicted the data.

Additionally, analyzing individual ribosome (and RNA-Seq) profiles revealed that ribosome (and RNA-Seq) density along the transcripts was very rarely constant, as would be

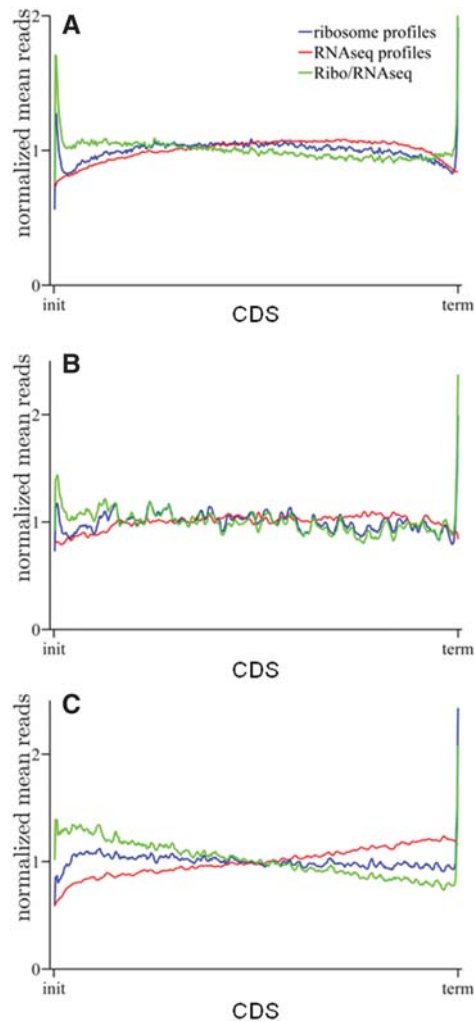


FIGURE 3. Average ribosome, RNA-Seq, and normalized profiles. Average read densities for Ribo-seq, RNA-Seq, and ribo/RNA for (A) 8933 well-expressed mRNAs, (B) 342 single exon mRNAs, and (C) 630 long mRNAs. All read densities are normalized against the mean number of reads of the profiles and against their length.

expected for translation without strong regulation. Instead, in addition to short peaks and valleys that can be accounted by slower/faster ribosome speeds at particular codons, many step-like changes were present in the profiles. Two likely reasons were alignment of RNA reads to multiple genomic regions and assignment of RNA reads aligned to single genomic regions to multiple gene isoforms that result from alternative splicing, which have both featured in the original study (Fig. 4; Ingolia et al. 2011). The profile of a single mRNA transcript can thus include not only the counts of its own reads but also the counts of reads belonging to all alternatively spliced isoforms that share the same sequence.

Because the effects of multiple alignments were estimated to be small in previous studies (Ingolia et al. 2011; Dana and Tuller 2012), we decided to focus on multiple assignments. We limited the data set to a group of single-exon genes

without known isoforms, for which any multiple assignment should not be possible. This decreased the bias but did not eliminate it (Fig. 3B). Interestingly, choosing only long mRNAs, as was done in the study that first found the ribosome profiling bias (Dana and Tuller 2012), also did not eliminate the bias, but this choice changed the average ribosome density: The RNA-Seq profiles for long mRNAs increase from the initiation to the termination codon, and consequently, the ribo/RNA profiles fall sharply in the same direction (Fig. 3C). This indicates that the Ribo-Seq and RNA-Seq bias depend on the length of the transcript.

CP detection in ribosome and RNA-seq profiles

Although multiple assignments could not completely explain the Ribo-Seq bias that was seen from the average profiles, they caused undesirable step-like changes in ribosome profiles and needed to be removed before the CP analysis. Therefore, assuming that approximately the same number of multiple assignments and multiple alignments occurred in both Ribo-Seq and RNA-Seq, all individual ribosome profiles were normalized with the corresponding RNA-Seq profiles. In this way, CP analysis of ribosome and RNA-Seq profiles should detect alternative splicing and translational regulation, while the analysis of the derived ribo/RNA profiles should detect translational regulation only.

The CP algorithm was run for 8933 ribosome profiles, RNA-Seq profiles, and ribo/RNA profiles using the same parameter values. As expected, the algorithm detected the fewest CPs in the ribo/RNA profiles (Ribo-Seq, 15483 CPs; RNA-Seq, 22342 CPs; ribo/RNA, 8255 CPs) (Supplemental Table S2). Almost half of the CPs that were found in ribosome profiles, but were no longer present in ribo/RNA profiles, matched the positions of known exon junctions (downloaded from UCSC Genome Browser database, assembly NCBI37/mm9) (Karolchik et al. 2004). The necessity of

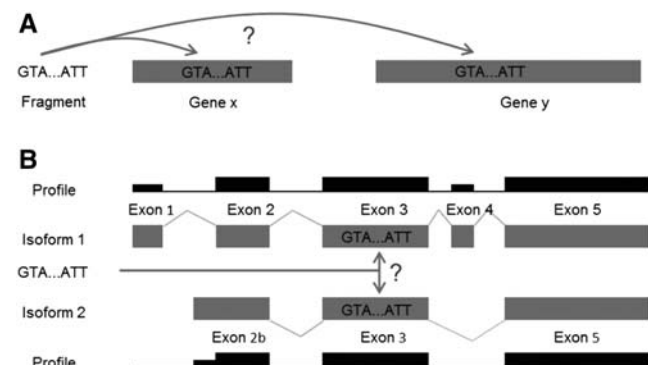


FIGURE 4. Multiple alignments and multiple assignments of RNA reads. (A) If an RNA read matches more than one genomic sequence, it can be assigned to both positions. (B) If there are more annotated isoforms that share the same genomic sequence, RNA reads can be assigned to all isoforms, leading to step-like changes in the ribosome and RNA-Seq profiles.

the normalization approach was also evident when examining individual transcripts; e.g., nine CPs were found in both the ribosome and RNA-Seq profiles for ribosome biogenesis regulator (*Rrs1*) and were all eliminated by the normalization, while for glutathione peroxidase 1 (*Gpx1*), two CPs were found in both the ribosome and RNA-Seq profiles and one CP remained after normalization (later identified as a true translation regulation event) (Fig. 5). Nevertheless, when examining positions of CPs found in all three types of profiles, it emerged that normalization not only removed CPs but also added new ones, particularly in the 5' and 3' ends of the CDSs (Supplemental Fig. S5). As most of these extra CPs were most likely to be artifacts of normalization, we took particular care to remove them in subsequent analysis.

In total, 34,844 CPs were found in all the different profiles. To find mRNA targets with a high probability of translation regulation, we applied several filters to this CP set. First, we categorized the CPs based on the profile (ribosome, RNA-Seq or ribo/RNA) in which they were found (Supplemental Fig. S6): Translational regulation targets should have CPs in ribosome profiles but not in RNA-Seq profiles, and normalization of the ribosome profiles with RNA-Seq profiles should not eliminate the CP. As a second filter, we eliminated all those CPs that coincided with known exon junctions. We were left with 815 CPs belonging to 635 mRNAs. From these, 336 CPs that came in pairs (an increase in signal density followed by a decrease to the same level, or vice versa) (see Fig. 4, exon 4) were removed as this pattern strongly suggested

alternative splicing coupled with multiple assignment of RNA reads (see Fig. 4). Gene ontology (GO) analysis of the remaining translation regulation candidates (479 CPs on 462 mRNAs) showed enrichment of several biological processes and cellular components, including nucleobase-containing compound metabolic process (GO:0006139), translational initiation (GO:0006413), and nuclear part (GO:0044428) (for a full list, see Supplemental Table S2).

Classification of CPs

By use of a decision tree, the CPs were then classified into the following groups: alternative termination, alternative initiation, ramp, drop-off, slow termination, stalling, and false positives (Supplemental Fig. S7). After automatic classification, each mRNA profile was visually inspected and compared with the genomic information available in UCSC Genome Browser (Meyer et al. 2013). If the CP could be explained by a factor different from translational regulation (e.g., by alternative splicing/multiple assignment), it was regarded as a false positive.

This analysis discovered six genes with potential for strong alternative termination: *Gpx4*, *Tmem55b*, *Atf4*, *2700094K13Rik* (also known as *SelH*), *Sep15*, and *Gpx1* (Fig. 6; Supplemental Table S2). For all six genes, the CPs are positioned at internal stop codons that are distant from exon junctions, indicating they are not artifacts of multiple assignments. Four of the six correspond to selenoprotein genes (*Gpx4*, *SelH*, *Sep15*, and *Gpx1*) with a UGA codon in the central region of the CDS. The presence of a stop codon in the CDS is a characteristic feature of selenoprotein mRNAs, where it codes for the amino acid selenocysteine (Hesketh 2008). There are 24 known mouse selenoprotein genes, but this CP analysis did not detect the other 20 genes. Likely reasons for this finding include the following: Only six of the other 20 selenoprotein genes were well expressed and thus were part of our analysis, with four of the six (*Txnrd1*, *SelK*, *SelT*, and *Vimp* [also known as *SelS*]) having the selenocysteine codon positioned immediately before the stop codon, making detection of alternative termination impossible. In addition, for the remaining two genes (*Sepw1* and *Msrb1* [also known as *Sepx1*]), CPs were found in ribosome profiles but then lost during normalization (*Sepx1*) or because the UGA was near an exon junction (*Sepw1*) (Supplemental Fig. S8).

In contrast to the mRNAs from selenoproteins that were translated in frame 0, the translation of the remaining two mRNAs (*Atf4* and *Tmem55b*) was frameshifted (determined by using a recent algorithm by Michel et al. 2012). For *Atf4*, we found two functional TISs, the canonical one and one in the 5' UTR in frame -1, indicating high translation of an uORF. For *Tmem55b*, we discovered a functional TIS in the 5' UTR in frame +1, while the canonical one was not functional (Supplemental Fig. S9). For both proteins, the translation was terminated in the middle of the annotated CDS, with potential production of functional peptides.

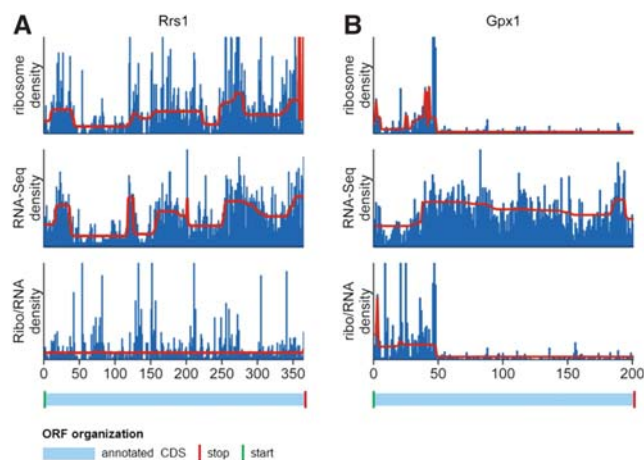


FIGURE 5. Elimination of artifacts from ribosome profiling. RNA read densities are shown in blue, and the segments of equal density estimated by the change point (CP) algorithm are shown in red. After normalization by RNA-Seq, artifacts, such as effects of multiple alignments and assignments, are removed from ribosome profiles. (A) For *Rrs1*, normalization removed all artifacts from the ribosome profile; consequently, the CP analysis of the normalized profile resulted in no CPs found. (B) For *Gpx1*, a single CP remained after normalization, which we later showed to be a true translation regulation event. The annotated CDSs are shown below the density plots in light blue. Green vertical lines indicate annotated start codons, red lines indicate annotated stop codons, and black lines indicate exon junctions.

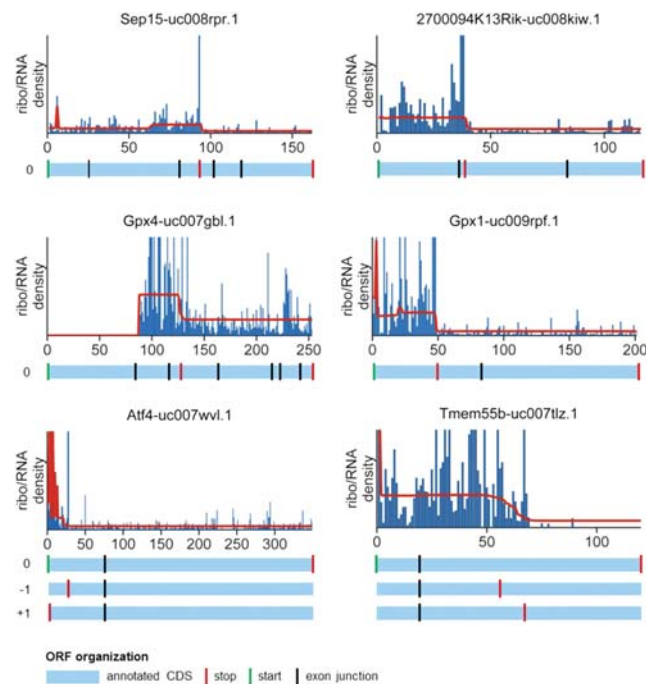


FIGURE 6. Genes with alternative termination. Ribo/RNA profiles are shown in blue, and the segments of equal density estimated by the CP algorithm are shown in red. The annotated CDSs are shown below the profiles plots in light blue. For *Atf4* and *Tmem55b*, the three reading frames are indicated as 0, -1, and +1. Green vertical lines indicate annotated start codons, red lines indicate annotated stop codons and/or the first stop codon encountered by the ribosome, and black lines indicate exon junctions.

We also discovered 11 genes with potential alternative initiation in the CDS leading to substantial translation: *Lactb2*, *Samm50*, *Mrpl24*, *Cyr61*, *Ube2j2*, *Psmc2*, *Psm8*, *Lsm14a*, *Nsmce1*, *Myplf*, and *Echs1* (Fig. 7; Supplemental Table S2). Of these, five genes (*Ube2j2*, *Psmc2*, *Psm8*, *Nsmce*, *Myplf*) were also discovered by Ingolia et al. (2011) when initiation was stopped with the translation inhibitor Harringtonine. Most of the discovered mRNAs were expressed in frame 0 in their annotated form; however due to two functional TISs, the annotated peptide and an alternative peptide were produced. *Psm8* (and possibly *Psmc2*) was expressed as an unknown isoform (Fig. 7).

We then tested whether CP analysis was useful for establishing the level of translation from alternative initiation sites predicted previously (Ingolia et al. 2011). We compared all 3426 alternative TISs predicted by Ingolia et al. (2011) to the positions of the detected CPs in ribosome profiles and found 13 matches (*D10Jhu81e*, *Lptm4a*, *Enox1*, *Eif4g1*, *Etv5*, *Hn1l*, *Ppp1ca*, *Hnrnpul2*, *Hnrpa3*, *Nrd1*, *Mtf2*, *Isg20l1*, and *Flna*) (Supplemental Fig. S10). Of these, most of the associated open reading frames (ORFs) were in the canonical frame and produced truncated proteins, while *Mtf2*, *Isg20l1*, and *Ppp1ca* were translated in frame +1 and produced a short peptide only, which can be seen by the decrease in ribosome

density shortly after the alternative initiation/increase in density (Supplemental Fig. S10).

The analysis found eight genes with potential ribosome drop-off (*Pum2*, *Cinp*, *Spin1*, *Myst4*, *L3mbtl2*, *Uhrf1*, *Zmat3*, and *Arpp19*) (Supplemental Fig. S11; Supplemental Table S2). In most cases, the drop in ribosome density was preceded by a large spike, indicating the drop could be a consequence of stalling at a slow codon. The drop-off group was enriched for methylated histone residue binding (GO: 0035064; *Spin1*, *L3mbtl2*, *Uhrf1*; FDR = 0.017), indicating a possible role for particularly slow elongation in the correct folding of proteins that bind histone residues. However due to small sample size, this interpretation has to be taken with due caution. Interestingly, the genomic sequence of

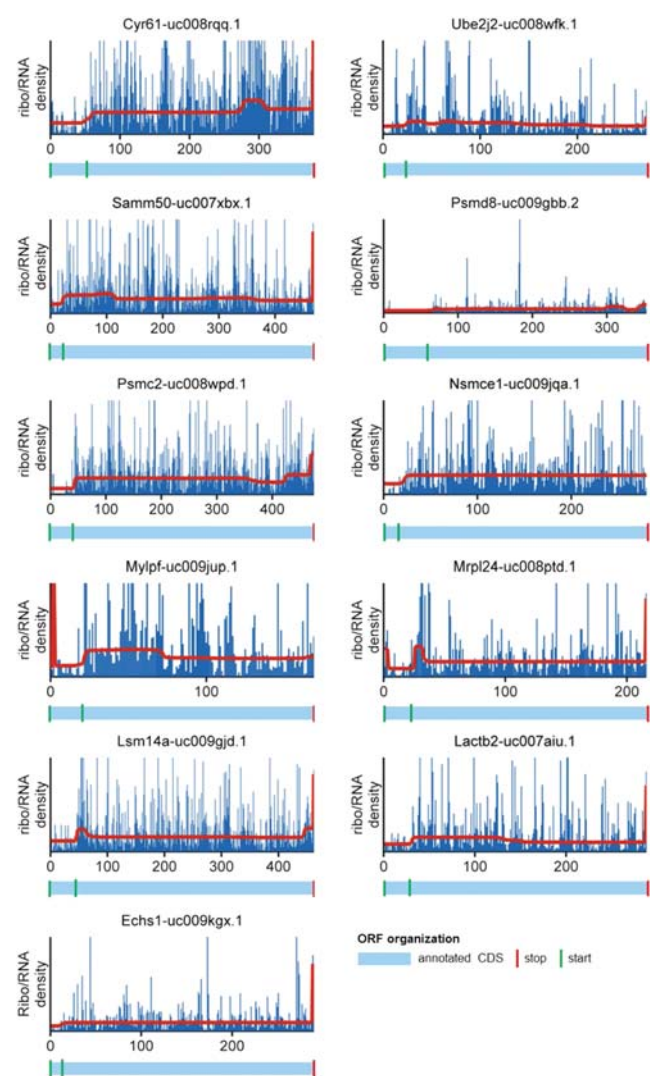


FIGURE 7. Genes with alternative initiation. Ribo/RNA profiles are shown in blue, and the segments of equal density estimated by the CP algorithm are shown in red. The annotated CDSs are shown below the profiles plots in light blue. Green vertical lines indicate annotated start codons and the newly discovered alternative start codons, while red lines indicate the annotated stop codons.

the eight genes around the predicted drop-off was enriched for G and A nucleotides, in particular the GAA codon (Supplemental Fig. S12).

We found 97 mRNAs with the ramp-high ribosome density immediately after initiation (Supplemental Table S2). When this group was compared with all well-expressed genes for translational efficiency, no difference was found, indicating that slow elongation at the start of the CDS and not fast initiation, which was a competing hypothesis brought forward by the modeling, is the main cause of the ramp (Supplemental Fig. S13). We also found no enrichment for rare codons or for any GO terms. Slow termination was predicted for 45 mRNAs (Supplemental Table S2). We found no enrichment for any particular stop codon, unusual termination context, rare codons preceding the stop codon, or any GO terms for this group. We also found no oscillation in the ribosome profiles, indicating that there is no significant ribosome queuing during translation.

Despite efforts to eliminate false positives, ~60% of CPs on the final list could not be attributed to the tested translational regulation mechanisms. Detailed manual analysis showed that many CPs were a consequence of alternative splicing; however because the CPs found around the known splice sites were eliminated, only CPs at unknown splice sites should have remained. By comparing the whole set of 462 candidates for translational regulation with UCSC isoform information, we found new isoforms for 31 genes (Fig. 8; Supplemental Table S2), suggesting that CPs could also be good markers for isoform discovery. We also found eight novel yet unannotated isoforms, for which there is clear evidence in the mRNA and EST tracks at the UCSC and/or Ensembl browsers (Supplemental Table S2), which supports the predictions made by the CP algorithm.

DISCUSSION

In this study we demonstrated how detecting changes in ribosome density along mRNA molecules can be used to find tar-

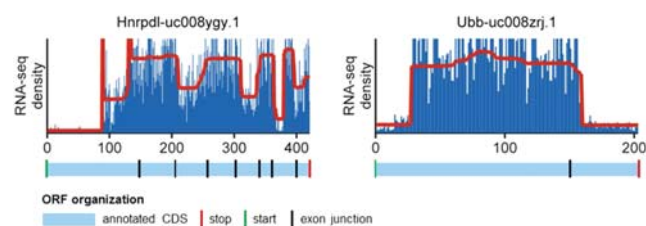


FIGURE 8. Genes with new isoforms. RNA-seq profiles are shown in blue, and the segments of equal density estimated by the CP algorithm are shown in red for *Hnrpdl* (left) and *Ubb* (right). The annotated CDS are shown below the profiles in light blue. Green vertical lines indicate annotated start codons and red vertical lines annotated stop codons, while black vertical line indicate exon junctions. For both genes, the CP location differs significantly from the annotated exon junctions and indicates hitherto unknown splicing sites. The remaining new isoforms found are described in Supplemental Table S2.

gets of translational regulation. By focusing on large changes of ribosome density, we were able to identify mRNA molecules for which translational regulation determines the sequence and number of expressed proteins. This approach detected known, as well as unknown, targets of alternative termination, alternative initiation, and putative ribosome drop-off. In addition, during our analysis we determined that Ribo-Seq suffers from the same experimental bias as RNA-Seq, and showed the utility and necessity of analyzing the results of both methods in parallel. Finally, we also demonstrated that changes in ribosome density or RNA-Seq density can be used to detect new genetic isoforms.

Several studies have used Ribo-Seq to study translational regulation after different interventions, and most have used translational efficiency of groups of transcripts as their measure of interest (Ingolia et al. 2011; Bazzini et al. 2012). One study that used individual ribosome profiles and position-based ribosome density in its analysis came to the surprising conclusion that ribosome flux increased along the transcripts with more ribosomes present at the 3' part of the CDS than the 5' part (Dana and Tuller 2012). The investigators offered two explanations for this proposition, either extensive alternative initiation from TISs inside the CDS or an unknown bias present in the data set. Our analysis of the Ribo-Seq and RNA-Seq data sets identified a bias and provided an explanation. The average ribosome and RNA-Seq profiles had highest ribosome density in the middle of the CDS, with lower density at both the 5' and 3' ends (Fig. 3). When the ribosome profiles were normalized by corresponding RNA-Seq profiles, the unusual density distribution disappeared, and the resulting ribo/RNA profiles had a very small decrease from the 5' to the 3' region. This is consistent with the current understanding of translation: Either a small fraction of ribosomes drop off the mRNA transcripts and do not finish translation (Kurland 1992) or there is a slight increase in ribosome speed along the mRNA (Bonderoff and Lloyd 2010; Dana and Tuller 2012). We repeated the analysis using only long transcripts to better match Dana and Tuller's analysis. This time the average Ribo-Seq and RNA-Seq were not so similar, but normalization still led to the expected ribo/RNA profiles. The sharper decline in ribo/RNA normalized profiles for longer mRNA molecules (cf. Fig. 3A,C) is not surprising. If the slow decrease in ribosome density from 5' UTR to 3' UTR seen in ribo/RNA normalized profiles of all genes (Fig. 3A,B) is due to a low probability of ribosome dropping off the transcript, then the faster decrease in the normalized profiles of longer mRNAs can be explained by their length alone. Our findings suggest that the increased ribosome flux reported by Dana and Tuller could be an artifact of the Ribo-Seq and RNA-Seq protocol used in the original study. An alternative explanation for the decreasing normalized ribosome profiles is that the Ribo-Seq and RNA-Seq do not share the same bias: Poly(A)-purification, such as that used by Ingolia et al. (2011), of the RNA-Seq samples has been shown to introduce an enrichment of 3' mRNA fragments

compared with the 5' fragments. Thus, normalization with so-biased RNA-Seq profiles could also lead to a decrease in normalized ribosome density along the transcript. Nevertheless, the similarity between the average ribosome and RNA-Seq profiles and the fact that the ribosome profiles post-normalization closely match theoretically expected ribosome profiles supports our interpretation.

One possible cause of the observed bias could be assignments of RNA reads to multiple genetic isoforms (Fig. 4). To test this hypothesis, the same analysis was run on only single-exon transcripts. This eliminated part, but not all, of the bias. Another possible source of the bias is the so-called fragment bias (Bohnert and Ratsch 2010; Hansen et al. 2010; Roberts et al. 2011), which has been shown to depend on transcript length and could therefore also explain the observed differences in profiles between long and short transcripts. Apart from being a source of part of the Ribo-Seq bias, multiple assignments also cause step-like changes in ribosome density in individual ribosome profiles. Dividing the ribosome profiles for each mRNA by its corresponding RNA-Seq profiles eliminated most of these artifacts, further underlining the utility of using RNA-Seq data for Ribo-Seq analysis (Fig. 5).

After running the CP algorithm, classifying the changes in density, and manually inspecting the candidates for translational regulation, we found several groups of mRNAs with different types of translational regulation. Among the alternative termination targets, we found four selenoprotein mRNAs (Fig. 6; Supplemental Table S2). The investigators of a recent ribosome profiling study that focused on translation of selenoproteins also identified a drop in ribosome density in selenoprotein ribosome profiles (Howard et al. 2013). Selenoproteins have an internal UGA codon that is recoded for selenocysteine insertion during translation. UGA recoding is not efficient, and it has been shown that selenocysteine insertion competes with premature termination (Driscoll and Copeland 2003). In Howard et al. (2013) and our selenoprotein ribosome profiles, ribosome density decreased at the UGA codon but did not disappear, indicating that full-size selenoprotein production and ribosome drop-off/termination occur on the same mRNA transcripts. When we ran the CP algorithm specifically on all selenoproteins, we found two more instances with the same type of change in density. Because selenoproteins are known targets of translational regulation, their identification in our alternative termination group supports our interpretation of CPs in ribosome profiles as sites of translational regulation.

One of the other alternative termination targets, *Atf4*, is also a known target of uORF regulation (Vattem and Wek 2004), which was also confirmed in the original ribosome profiling study (Ingolia et al. 2011). To our knowledge, translational regulation has not yet been described for the final target identified, *Tmem55b*. The alternative termination of both, *Atf4* and *Tmem55b*, can only be explained by translational frameshifting or initiation in a different frame. Therefore, we used a

recent frameshift detection algorithm (Michel et al. 2012) to search for frameshift sites upstream of the predicted alternative termination. The successful detection of both is an indirect verification of our approach (Supplemental Table S2).

We are aware of three other studies that have used ribosome profiling to find potential TISs (Ingolia et al. 2011; Fritsch et al. 2012; Lee et al. 2012). In all studies, any site where ribosomes stalled after applying an initiation blocker was presumed to be a potential TIS. However, in none of the studies was the translation associated with each of these sites systematically quantified. In our analysis, we focused only on those alternative TISs in the annotated CDS that are associated with substantial initiation, i.e., where the ribosome density changes by at least 33%. We found 11 genes with potential alternative initiation (Fig. 7), of which five have previously been reported (Ingolia et al. 2011). A possible reason why the other six genes were missed by Ingolia et al. (2011) is that harringtonine does not always halt translation at near cognate (e.g., *cug*, *gug*) TISs (Starck et al. 2008). While it is possible that some of our 11 genes are false positives, it should be noted that Ingolia et al. (2011) found 3426 potential alternative TISs in the annotated CDSs. When we screened these 3426 TISs, we discovered CPs for only 13, suggesting the vast majority of the detected TISs is associated with only limited translation.

We found a further eight mRNAs with potential ribosome drop-off, none of which were previously reported to be targets of translational regulation. The difference between these and the alternative termination mRNAs was that no stop codon was found at the positions of the CP for the latter. Analysis of the sequence surrounding the drop-off site showed enrichment for G and A nucleotides and, specifically, the GAA codon. A similar consensus was found for sites of ribosome pausing in the original Ribo-Seq study (Ingolia et al. 2011). It therefore seems that in at least some cases, ribosome stalling can lead to ribosome drop-off in eukaryotes, as has been suggested (Buchan and Stansfield 2007). Another possible explanation for the sudden drop in ribosome density would be ribosome queuing: When ribosomes queue behind a ribosome at a slow codon or a sequence of slow codons on the transcripts, a shadow of lower ribosome density can occur downstream from the slow codon. However, for a shadow of significant size to occur, there needs to be substantial queuing, which should manifest itself as oscillation in ribosome density upstream of the slow codons (Supplemental Fig. S14A). Also, even in this extreme case, the shadow is of finite size and does not stretch all the way to the stop codon; after the shadow, the ribosome density returns to prequeue levels. Since we did not detect any oscillation in the ribosome profiles and since the detected decreases in ribosome density for our ribosome drop-off transcripts are permanent, we feel that drop-off is the more likely explanation. Additionally, when a low probability of ribosome drop-off at a slow codon is modeled, the simulated ribosome profiles agree very closely with the experimental ones (Supplemental Fig. S14B).

We also found several mRNAs with high ribosome density at the 5' (ramp) or the 3' (slow termination) of the CDS; however, sequence analysis did not reveal enrichment for any sequences. Instead of resulting from translation of slow codons, as in the current hypothesis, the TASEP simulations of translation have suggested that the ramp could be due to very fast initiation, but this has not been confirmed by analysis of translation efficiency. Therefore, slow codons and/or mRNA tertiary structure remain the most probable causes of the ramp (Kudla et al. 2009; Tuller et al. 2010).

Although we tried to eliminate changes in density due to Ribo-Seq/RNA-Seq artifacts, a careful analysis showed that many CPs among the translation regulation candidates were a consequence of alternative splicing. Because all changes in density close to known exon junctions as annotated in the UCSC Genome Browser were eliminated from the final list, the remaining CPs were strong candidates for novel isoforms. By using this approach, we found 31 genes with hitherto unknown isoforms from UCSC or Ensembl (Supplemental Table S2) and a further eight for which some evidence already exists (Supplemental Table S2), suggesting that our method is useful not only for analyzing translational regulation but also for uncovering novel alternative isoforms, including alternative splicing. Indeed, in a very recent study, a strategy similar to ours has been developed specifically to estimate gene isoform expression with very encouraging results (Suo et al. 2013).

In conclusion, the present study demonstrates that ribosome density patterns in the CDSs are a valuable source of information in the analysis of translational regulation. The CP approach taken in the study has proven useful in detecting translational regulation in the mRNA coding region but would easily be extendable to analysis of 5' UTR and 3' UTR regions and to detection of alternative splicing events.

MATERIALS AND METHODS

TASEP models of protein translation

The protein translation models were developed based on the TASEP with extended particles (Lakatos and Chou 2003). In the models, an mRNA CDS with $N = 500$ codons is presented by a chain of 500 sites, while a ribosome attached to the mRNA covers $L = 10$ codons (Fig. 1). If the first site of the mRNA is free, a new ribosome attaches at the initiation with the rate k_I . After initiation, the ribosome moves along the mRNA at a codon-specific rate k_{Ei} , again only if its movement is not hindered by another ribosome. When the ribosome reaches the final codon, it detaches at rate k_T from the mRNA together with a full-size peptide, the results of the translation process.

The dynamics of ribosome progression along the mRNA was simulated with the next-reaction Gillespie algorithm (Gillespie 1977), using custom R code (Supplemental File 1). All simulations started with an empty mRNA, which was simulated for 1 million ribosome steps. As the average half-life of a mammalian mRNA is ~ 9 h (Schwanhauss et al. 2011) and the steady-state ribosome density is achieved in a matter of minutes, according to estimates of elongation speed of ~ 5 aa/sec (Ingolia et al. 2011), the transient lower ri-

bosome occupation of the mRNA (first 100,000 steps) was ignored in all analyses. The ribosome profiles were determined by random sampling and averaging of ribosome position along the mRNA from step 100,000 to the end of the simulation. The protein synthesis rates were determined by dividing the total number of proteins produced by the total time that has passed from step 100,000 to the end of the simulation.

When simulating alternative initiation at a TISs other than the canonical one, the scanning model of translation initiation was assumed (Kozak 1989). Instead of the 80S ribosome coming together at the canonical TIS, the 40S skips it at rate k_{Alt} and scans downstream until a suitable TIS is found. In the simulations, we assumed that the 40S scanning occurs at the same speed as elongation and that it is the same size as the full 80S ribosome, thus providing the same steric hindrance to other ribosomes. Nevertheless, since 40S ribosomes are not recorded in Ribo-Seq, we ignored them in the ribosome density calculations (Ingolia et al. 2009).

Ribosome drop-off and alternative termination were modeled as alternatives to the elongation step occurring at rate k_{Di} ; i.e., at any codon on the mRNA (except the final codon), the ribosome could either move to the next codon or detach from the mRNA.

CP analysis

In this study, we tested CP algorithms from the *changeoint* R package (<http://cran.r-project.org/web/packages/changeoint/index.html>) and a Bayesian CP algorithm from the *bcp* R package (<http://cran.r-project.org/web/packages/bcp/index.html>) (Erdman and Emerson 2008; R Development Core Team 2008). In a preliminary run, both algorithms produced very similar results; however as the *bcp* returns the estimates of both the mean and the probability of a CP for each position in a sequence (whereas *changeoint* does not), we decided to use it for the rest of the analysis. The details of the algorithm are presented by Erdman and Emerson (2008); therefore, here we only provide a broad overview and the changes we have made to the algorithm for analysis of our rather specific signals, ribosome and RNA-Seq profiles.

Ribosome and RNA-Seq profiles are represented as vectors of the number of RNA reads aligned to specific positions of the mRNA CDSs $y_R = [y_{R1}, \dots, y_{Rn}]$. The *bcp* algorithm assumes that there is an unknown partition, ρ , of each vector into contiguous blocks, such the means are equal in each block but different between neighboring blocks. A CP is defined as the position on the mRNA $i \in \{1, \dots, n-1\}$ that delimits two consecutive blocks. The algorithm begins with a zero partition $\rho = (U_1, U_2, \dots, U_n)$; $U_i = 0$; $U_n = 1$ and then updates it in an MCMC scheme. In each step of the Markov chain, at each position i , a value of U_i is drawn from the conditional distribution of U_i given the data and the current partition. The transition probability, p , of a change at the position $i+1$ is obtained from the following ratio presented by Barry and Hartigan (1993):

$$\frac{p_i}{1 - p_i} = \frac{\int_0^{p_0} p^b (1-p)^{n-b-1} dp}{\int_0^{p_0} p^{b-1} (1-p)^{n-b} dp} \cdot \frac{\int_0^{w_0} \frac{w^{b/2}}{(W_1 + B_1 w)^{(n-1)/2}} dw}{\int_0^{w_0} \frac{w^{(b-1)/2}}{(W_0 + B_0 w)^{(n-1)/2}} dw}$$

where b is the number of blocks, p_0 and w_0 are parameters used in the definition of priors that control the sensitivity of the algorithm,

and W_0 , B_0 , W_1 , and B_1 are the within and between block sums of squares obtained when $U_i = 0$ and $U_i = 1$, respectively. In this study, different values of p_0 and w_0 were tested, with $p_0 = 0.001$ (the number of changes in the signal was expected to be low) and $w_0 = 0.2$ (relevant changes were expected to be of reasonable size) producing reasonable results in detecting changes in the simulated data sets (Supplemental Fig. S3; Erdman and Emerson 2008). The parameters were changed to $p_0 = 0.1$, $w_0 = 0.02$ when detecting CPs after slow elongation and termination; these parameters were found to work better when the number of changes to be detected was high.

Only CPs with the following properties were included into the analysis:

- Minimum segment size of at least 10 codons. A sufficient segment size is intended to guarantee that the detected CPs are not due to random noise but are genuine translational regulation events. When segments were smaller, the CPs were combined into a single CP with the smallest possible increase in mean squared error between the signal and the estimated posterior means of the segments.
- The change in mean between two neighboring segments of at least 1/3:

$$(0.75 > \bar{y}_k / \bar{y}_{k+1}) \vee (\bar{y}_k / \bar{y}_{k+1} < 1.33).$$

While smaller changes were detected by the algorithm, they were ignored in subsequent analysis to decrease the number of false positives.

- The confidence level of the CP had to be >0.95 .

Each detected and accepted CP was assigned an interval, which had at least 95% probability of encompassing the true CP. The interval was defined as positions at which CL reached 2.5% and 97.5% of its final value, respectively.

The algorithm was first tested on 500 randomly chosen RNA-seq and ribosome profiles. The test revealed that the algorithm is sensitive to peaks in ribosome density. Because they have been studied before (Ingolia et al. 2011), we were not interested in these so called “ribosome pauses.” Therefore, we decided to scan the ribosome profiles for any peaks (three codons or less wide) where ribosome density is at least 10-fold or greater than the mean density across the CDS and replace these peaks with the mean CDS ribosome density. We then repeated the CP analysis for the whole data set.

Generation of ribosome and RNA-Seq profiles for individual mRNAs

Our analysis was performed on a Ribo-Seq data set for mESCs (Ingolia et al. 2011) as submitted to the NCBI Gene Expression Omnibus (GEO) database (accession no. GSE30839) (Barrett and Edgar 2006). From the whole set of data generated by Ingolia et al. (2011), we selected 8933 well-expressed and translated transcripts with a CDS ribosome density of more than 1/nucleotide, representing 4784 genes (Supplemental Table S2). For each CDS, the nucleotide reads were transformed into codon reads by averaging the reads obtained from three nonoverlapping consecutive nucleotides, starting from the annotated start codon and ending at the stop codon.

The average ribosome profiles and RNA-Seq profiles were generated by first normalizing all individual profiles by length. This was performed by using function *interp1* in Matlab with “linear” interpolation. The profiles were then normalized against their own mean

profile values, the normalized profiles summed, and the sum divided by the total number of isoforms. Finally, the ribo/RNA profiles were obtained by dividing the ribosome profiles by the RNA-Seq profiles (to avoid division by zero, all zeros in the RNA-Seq profiles were replaced by the minimum RNA-Seq profiles value above zero).

Eliminating alternative splicing CPs

Based on the profile (ribosome, RNA-Seq, or ribo/RNA) in which a CP was found, we categorized the CPs into seven different groups (Supplemental Fig. S6). Group A contains the CPs found only in ribosome profiles—they are not found in RNA-Seq profiles—that are eliminated by normalization. These are most likely to be caused by noise, short segments of slow/fast codons, or weak multiple assignments detected in ribosome profiles, but not RNA-Seq profiles (vice versa for group B). Groups D and G contain CPs found in ribosome profiles (D,G), RNA-Seq profiles (D,G), and ribo/RNA profiles (G). These are most likely due to multiple alignments/assignments. Groups C and F are most likely false positives caused by normalization itself (C) or noise (F). We are thus left with the most likely targets for translation regulation, Group E: 1355 CPs (4%) found in ribosome and ribo/RNA profiles, but not in RNA-Seq profiles.

This group was reduced further by eliminating all CPs that were fewer than three codons away from a known exon junction and CPs that came in pairs (a rise/drop at first CP countered by a drop/rise to the same level at second CP, a pattern typical of for multiple assignments).

Categorization of translational regulation candidates

CP properties and genomic sequence data were used to categorize CPs into groups with different translational regulation events. Increased ribosome density was taken as a sign of alternative initiation or slow termination, with decreased density indicating alternative termination, ribosome drop-off, or ramp. The position of the CP was taken into account when distinguishing between, e.g., alternative initiation (more probable at 5' ends of the CDS) and slow termination (3' ends of the CDS). We scanned the genomic sequences surrounding the detected CPs for potential stop codons and strong initiation sequences (consensus sequence taken from Ingolia et al. 2011) in any reading frame. We also calculated the periodicity transition score (script downloaded from <http://lapti.ucc.ie/bicoding/Rscripts/PTS.R> in September 2013), a measure of how the nucleotide triplet periodicity (i.e., RNA reads being assigned either to the first, second, or third nucleotide of a codon) changes in the ribosome profiles (Michel et al. 2012). If $PTS > 10$, we considered the possibility of a frameshift. The above data were fed into a decision tree (Supplemental Fig. S7) to classify the CPs automatically. Afterward, each transcript profile was visually inspected and compared with the genomic information available in UCSC Genome Browser, especially information on all gene isoforms (Meyer et al. 2013). If the CP could be explained by a factor other than translational regulation, it was regarded as a false positive.

GO analysis

Identified sets of genes were compared with the group of all well-expressed genes for GO enrichment with the web-based tool GOrilla, using the default settings (Eden et al. 2009).

SUPPLEMENTAL MATERIAL

Supplemental material is available for this article.

ACKNOWLEDGMENTS

A.Z., C.M., J.C.M., T.B.L.K., J.E.H., and D.P.S. thank the Biotechnology and Biological Sciences Research Council (BBSRC) for support (BB/H011471/1). S.N.G. thanks the Addison Wheeler Trust for support.

Received March 14, 2014; accepted June 25, 2014.

REFERENCES

- Arava Y, Boas F, Brown P, Herschlag D. 2005. Dissecting eukaryotic translation and its control by ribosome density mapping. *Nucleic Acids Res* **33**: 2421–2432.
- Barrett T, Edgar R. 2006. Gene expression omnibus: microarray data storage, submission, retrieval, and analysis. *Methods Enzymol* **411**: 352–369.
- Barry D, Hartigan JA. 1993. A Bayesian-analysis for change point problems. *J Am Stat Assoc* **88**: 309–319.
- Bazzini A, Lee M, Giraldez A. 2012. Ribosome profiling shows that miR-430 reduces translation before causing mRNA decay in zebrafish. *Science* **336**: 233–237.
- Bohnert R, Ratsch G. 2010. rQuant.web: a tool for RNA-Seq-based transcript quantitation. *Nucleic Acids Res* **38**: W348–W351.
- Bonderoff JM, Lloyd RE. 2010. Time-dependent increase in ribosome processivity. *Nucleic Acids Res* **38**: 7054–7067.
- Brockmann R, Beyer A, Heinisch JJ, Wilhelm T. 2007. Posttranscriptional expression regulation: what determines translation rates? *PLoS Comput Biol* **3**: 531–539.
- Buchan JR, Stansfield I. 2007. Halting a cellular production line: responses to ribosomal pausing during translation. *Biol Cell* **99**: 475–487.
- Cho PF, Gamberi C, Cho-Park YA, Cho-Park IB, Lasko P, Sonenberg N. 2006. Cap-dependent translational inhibition establishes two opposing morphogen gradients in *Drosophila* embryos. *Curr Biol* **16**: 2035–2041.
- Dana A, Tuller T. 2012. Determinants of translation elongation speed and ribosomal profiling biases in mouse embryonic stem cells. *PLoS Comput Biol* **8**: e1002755.
- Dittmar K, Goodenbour J, Pan T. 2006. Tissue-specific differences in human transfer RNA expression. *PLoS Genet* **2**: e221.
- Driscoll D, Copeland P. 2003. Mechanism and regulation of selenoprotein synthesis. *Annu Rev Nutr* **23**: 17–40.
- Eden E, Navon R, Steinfeld I, Lipson D, Yakhini Z. 2009. GOrilla: a tool for discovery and visualization of enriched GO terms in ranked gene lists. *BMC Bioinformatics* **10**: doi: 10.1186/1471-2105-10-48.
- Erdman C, Emerson JW. 2008. A fast Bayesian change point analysis for the segmentation of microarray data. *Bioinformatics* **24**: 2143–2148.
- Fritsch C, Herrmann A, Nothnagel M, Szafranski K, Huse K, Schumann F, Schreiber S, Platzer M, Krawczak M, Hampe J, et al. 2012. Genome-wide search for novel human uORFs and N-terminal protein extensions using ribosomal footprinting. *Genome Res* **22**: 2208–2218.
- Gillespie DT. 1977. Exact stochastic simulation of coupled chemical-reactions. *J Phys Chem* **81**: 2340–2361.
- Guo H, Ingolia NT, Weissman JS, Bartel DP. 2010. Mammalian microRNAs predominantly act to decrease target mRNA levels. *Nature* **466**: 835–840.
- Hansen KD, Brenner SE, Dudoit S. 2010. Biases in Illumina transcriptome sequencing caused by random hexamer priming. *Nucleic Acids Res* **38**: e131.
- Hesketh J. 2008. Nutrigenomics and selenium: gene expression patterns, physiological targets, and genetics. *Annu Rev Nutr* **28**: 157–177.
- Howard MT, Carlson BA, Anderson CB, Hatfield DL. 2013. Translational redefinition of UGA codons is regulated by selenium availability. *J Biol Chem* **288**: 19401–19413.
- Ingolia NT. 2014. Ribosome profiling: new views of translation, from single codons to genome scale. *Nat Rev Genet* **15**: 205–213.
- Ingolia NT, Ghaemmaghami S, Newman JR, Weissman JS. 2009. Genome-wide analysis in vivo of translation with nucleotide resolution using ribosome profiling. *Science* **324**: 218–223.
- Ingolia N, Lareau L, Weissman J. 2011. Ribosome profiling of mouse embryonic stem cells reveals the complexity and dynamics of mammalian proteomes. *Cell* **147**: 789–802.
- Ingolia NT, Brar GA, Rouskin S, McGeachy AM, Weissman JS. 2012. The ribosome profiling strategy for monitoring translation in vivo by deep sequencing of ribosome-protected mRNA fragments. *Nat Protoc* **7**: 1534–1550.
- Karolchik D, Hinrichs AS, Furey TS, Roskin KM, Sugnet CW, Haussler D, Kent WJ. 2004. The UCSC Table Browser data retrieval tool. *Nucleic Acids Res* **32**: D493–D496.
- Kozak M. 1989. The scanning model for translation: an update. *J Cell Biol* **108**: 229–241.
- Kudla G, Murray A, Tollervey D, Plotkin J. 2009. Coding-sequence determinants of gene expression in *Escherichia coli*. *Science* **324**: 255–258.
- Kurland CG. 1992. Translational accuracy and the fitness of bacteria. *Annu Rev Genet* **26**: 29–50.
- Lakatos G, Chou T. 2003. Totally asymmetric exclusion processes with particles of arbitrary size. *J Phys A Math Gen* **36**: 2027–2041.
- Lee S, Liu B, Lee S, Huang S-X, Shen B, Qian S-B. 2012. Global mapping of translation initiation sites in mammalian cells at single-nucleotide resolution. *Proc Natl Acad Sci* **109**: E2424–E2432.
- Leprivier G, Remke M, Rotblat B, Dubuc A, Mateo AR, Kool M, Agnihotri S, El-Naggar A, Yu B, Somasekharan SP, et al. 2013. The eEF2 kinase confers resistance to nutrient deprivation by blocking translation elongation. *Cell* **153**: 1064–1079.
- Li GW, Oh E, Weissman JS. 2012. The anti-Shine-Dalgarno sequence drives translational pausing and codon choice in bacteria. *Nature* **484**: 538–541.
- Liu B, Han Y, Qian SB. 2013. Cotranslational response to proteotoxic stress by elongation pausing of ribosomes. *Mol Cell* **49**: 453–463.
- Meyer LR, Zweig AS, Hinrichs AS, Karolchik D, Kuhn RM, Wong M, Sloan CA, Rosenbloom KR, Roe G, Rhead B, et al. 2013. The UCSC Genome Browser database: extensions and updates 2013. *Nucleic Acids Res* **41**: D64–D69.
- Michel A, Choudhury K, Firth A, Ingolia N, Atkins J, Baranov P. 2012. Observation of dually decoded regions of the human genome using ribosome profiling data. *Genome Res* **22**: 2219–2229.
- R Development Core Team. 2008. *R: A language and environment for statistical computing*. R Foundation for Statistical Computing, Vienna, Austria.
- Richter JD, Sonenberg N. 2005. Regulation of cap-dependent translation by eIF4E inhibitory proteins. *Nature* **433**: 477–480.
- Roberts A, Trapnell C, Donaghey J, Rinn JL, Pachter L. 2011. Improving RNA-Seq expression estimates by correcting for fragment bias. *Genome Biol* **12**: R22.
- Rogers AN, Chen D, McColl G, Czerwieńiec G, Felkey K, Gibson BW, Hubbard A, Melov S, Lithgow GJ, Kapahi P. 2011. Life span extension via eIF4G inhibition is mediated by posttranscriptional remodeling of stress response gene expression in *C. elegans*. *Cell Metab* **14**: 55–66.
- Schwanhauser B, Busse D, Li N, Dittmar G, Schuchhardt J, Wolf J, Chen W, Selbach M. 2011. Global quantification of mammalian gene expression control. *Nature* **473**: 337–342.
- Shaw L, Zia R, Lee K. 2003. Totally asymmetric exclusion process with extended objects: a model for protein synthesis. *Phys Rev E* **68**: 21910.
- Sonenberg N, Hinnebusch A. 2009. Regulation of translation initiation in eukaryotes: mechanisms and biological targets. *Cell* **136**: 731–745.
- Stadler M, Fire A. 2011. Wobble base-pairing slows in vivo translation elongation in metazoans. *RNA* **17**: 2063–2073.

- Starck SR, Ow YK, Jiang V, Tokuyama M, Rivera M, Qi X, Roberts RW, Shastri N. 2008. A distinct translation initiation mechanism generates cryptic peptides for immune surveillance. *PLoS One* **3**: e3460.
- Suo C, Calza S, Salim A, Pawitan Y. 2013. Joint estimation of isoform expression and isoform-specific read distribution using multisample RNA-Seq data. *Bioinformatics* **30**: 506–513.
- Sutton MA, Taylor AM, Ito HT, Pham A, Schuman EM. 2007. Postsynaptic decoding of neural activity: eEF2 as a biochemical sensor coupling miniature synaptic transmission to local protein synthesis. *Neuron* **55**: 648–661.
- Tian Q, Stepaniants S, Mao M, Weng L, Feetham M, Doyle M, Yi E, Dai H, Thorsson V, Eng J, et al. 2004. Integrated genomic and proteomic analyses of gene expression in mammalian cells. *Mol Cell Proteomics* **3**: 960–969.
- Tuller T, Carmi A, Vestsgian K, Navon S, Dorfan Y, Zaborske J, Pan T, Dahan O, Furman I, Pilpel Y. 2010. An evolutionarily conserved mechanism for controlling the efficiency of protein translation. *Cell* **141**: 344–354.
- Vattem KM, Wek RC. 2004. Reinitiation involving upstream ORFs regulates ATF4 mRNA translation in mammalian cells. *Proc Natl Acad Sci* **101**: 11269–11274.
- Vogel C, Abreu R, Ko D, Le S-Y, Shapiro B, Burns S, Sandhu D, Boutz D, Marcotte E, Penalva L. 2010. Sequence signatures and mRNA concentration can explain two-thirds of protein abundance variation in a human cell line. *Mol Syst Biol* **6**: 400.



Detecting translational regulation by change point analysis of ribosome profiling data sets

Anze Zupanic, Catherine Meplan, Sushma N. Grellscheid, et al.

RNA 2014 20: 1507-1518 originally published online August 21, 2014
Access the most recent version at doi:[10.1261/rna.045286.114](https://doi.org/10.1261/rna.045286.114)

**Supplemental
Material**

<http://rnajournal.cshlp.org/content/suppl/2014/08/05/rna.045286.114.DC1>

References

This article cites 49 articles, 11 of which can be accessed free at:
<http://rnajournal.cshlp.org/content/20/10/1507.full.html#ref-list-1>

Open Access

Freely available online through the *RNA* Open Access option.

**Creative
Commons
License**

This article, published in *RNA*, is available under a Creative Commons License (Attribution 4.0 International), as described at <http://creativecommons.org/licenses/by/4.0/>.

**Email Alerting
Service**

Receive free email alerts when new articles cite this article - sign up in the box at the top right corner of the article or [click here](#).

To subscribe to *RNA* go to:
<http://rnajournal.cshlp.org/subscriptions>
