



Article

Cite this article: Arthur JF, Stokes CR, Jamieson SSR, Miles BWJ, Carr JR, Leeson AA (2021). The triggers of the disaggregation of Voyeykov Ice Shelf (2007), Wilkes Land, East Antarctica, and its subsequent evolution. *Journal of Glaciology* 1–19. <https://doi.org/10.1017/jog.2021.45>

Received: 15 September 2020

Revised: 31 March 2021

Accepted: 1 April 2021

Keywords:




Ice/atmosphere interactions; ice/ocean interactions; ice-shelf break-up; melt-surface; sea-ice/ice-shelf interactions

Author for correspondence:

Jennifer F. Arthur,

E-mail: jennifer.arthur@durham.ac.uk

The triggers of the disaggregation of Voyeykov Ice Shelf (2007), Wilkes Land, East Antarctica, and its subsequent evolution

Jennifer F. Arthur¹ , Chris R. Stokes¹, Stewart S. R. Jamieson¹, Bertie W. J. Miles¹ , J. Rachel Carr² and Amber A. Leeson³ 

¹Department of Geography, Durham University, Durham, DH1 3LE, UK; ²School of Geography, Politics and Sociology, Newcastle University, Newcastle-upon-Tyne, NE1 7RU, UK and ³Lancaster Environment Centre/Data Science Institute, Lancaster University, Bailrigg, Lancaster, LA1 4YW, UK

Abstract

The weakening and/or removal of floating ice shelves in Antarctica can induce inland ice flow acceleration. Numerical modelling suggests these processes will play an important role in Antarctica's future sea-level contribution, but our understanding of the mechanisms that lead to ice tongue/shelf collapse is incomplete and largely based on observations from the Antarctic Peninsula and West Antarctica. Here, we use remote sensing of structural glaciology and ice velocity from 2001 to 2020 and analyse potential ocean-climate forcings to identify mechanisms that triggered the rapid disintegration of ~2445 km² of ice mélange and part of the Voyeykov Ice Shelf in Wilkes Land, East Antarctica between 27 March and 28 May 2007. Results show disaggregation was pre-conditioned by weakening of the ice tongue's structural integrity and was triggered by mélange removal driven by a regional atmospheric circulation anomaly and a less extensive latent-heat polynya. Disaggregation did not induce inland ice flow acceleration, but our observations highlight an important mechanism through which floating termini can be removed, whereby the break-out of mélange and multiyear landfast sea ice triggers disaggregation of a structurally-weak ice shelf. These observations highlight the need for numerical ice-sheet models to account for interactions between sea-ice, mélange and ice shelves.

1. Introduction

Large-scale ice shelf retreat is of concern because it can reduce the back-stress exerted on grounded ice further inland and trigger enhanced ice discharge – a process known as ‘ice shelf de-buttressing’ (Rignot and others, 2004; Scambos and others, 2004). Numerical modelling projections suggest this process will be a key control on the timing and magnitude of future sea-level rise from Antarctica (Golledge and others, 2015; DeConto and Pollard, 2016). The retreat of ice shelves and ice tongues in Antarctica has been attributed to a combination of, and often feedbacks between, enhanced atmospheric warming (Doake and Vaughan, 1991; Scambos and others, 2003), surface meltwater-induced flexure and hydrofracture (Banwell and others, 2013, 2019; Banwell and MacAyeal, 2015), thinning from basal melting (Shepherd and others, 2004), sea-ice loss (Miles and others, 2017, 2018), ocean swell (Massom and others, 2018) and the enhancement of structural weaknesses (Massom and others, 2015; Miles and others, 2020). An important process driving ice shelf retreat is iceberg calving, which accounts for ~50% of ice mass loss from Antarctica (Rignot and others, 2013).

The frequency of major calving events and large-scale retreat can be modulated by ice mélange (an amalgamation of sea ice, marine ice, firn and densely packed calved icebergs), which is known to exert a buttressing force on floating glacier tongues and ice shelves (Amundson and others, 2010; Massom and others, 2010; Carr and others, 2013; Moon and others, 2015; Burton and others, 2018; Xie and others, 2019; Schlemm and Levermann, 2020). Because of this, the removal of ice mélange and the associated reduction in buttressing can weaken the structural integrity of floating glacier tongues and ice shelves (Cassotto and others, 2015; King and others, 2018; Miles and others, 2020). Landfast sea ice, which is sea ice that becomes ‘fastened’ to the coastline, floating ice shelves/tongues, or grounded icebergs (Massom and others, 2010), can often be a major component of mélange (Robel, 2017; Miles and others, 2018). Indeed, areas of landfast ice that persist year-round, known as multiyear landfast ice (MYLI), can thicken to form extensive, decades-old slabs up to tens of metres thick, which provide stability to floating glacier tongues (Giles and others, 2008; Massom and others, 2010, 2015).

The presence of MYLI and ice mélange is an important control on the stability of ice shelves and glacier tongues in Antarctica. Indeed, mechanical coupling between thick (10–55 m) MYLI and the Mertz Glacier Tongue is thought to have delayed its calving event in 2010 by enclosing major rifts (Massom and others, 2010, 2015). This is similar to parts of the Brunt/Stancomb-Wills Ice Shelf system where thick (>100 m) mélange cements together large tabular icebergs (Khazendar and others, 2009). On the Antarctic Peninsula, the Larsen A Ice Shelf was in a heavily fractured state and only bound together by dense MYLI prior to

© The Author(s) 2021. This is an Open Access article, distributed under the terms of the Creative Commons Attribution licence (<http://creativecommons.org/licenses/by/4.0/>), which permits unrestricted re-use, distribution, and reproduction in any medium, provided the original work is properly cited.

breaking up in January 1995 (Rott and others, 1996). Similarly, the loss of large portions of Wilkins Ice Shelf in 2008 may have been triggered by the displacement of ice mélange causing fracturing along pre-existing failure zones (Humbert and Braun, 2008). Observations have also recorded reductions in MYLI extent in numerous locations around Antarctica over the last two decades (Ushio, 2006; Massom and others, 2010; Stammerjohn and others, 2011). In northern Greenland, the reduction in buttressing associated with the disintegration of mélange and MYLI in front of Nioghalvfjærdssjøen is thought to have triggered a large calving event in 1997 from its floating ice tongue (Reeh and others, 2001; Hill and others, 2017). However, comprehensive observations, in situ measurements and numerical modelling of mélange and MYLI properties (such as strength and back-stress) are typically scarce, meaning their influence on ice shelf buttressing and stability is poorly understood. For example, large-scale retreat of vulnerable marine-based sectors of Antarctica like the Amundsen Sea Sector into unconfined embayments could potentially generate a large amount of mélange, but the potential mitigating effect of this buttressing component is unknown (Pollard and others, 2018). Thus, understanding the relative contributions and importance of mélange and MYLI in modulating ice shelf and tidewater glacier calving has important implications for projections of grounding line retreat and inland ice loss.

Ice shelf break-up on the Antarctic Peninsula has dominated the literature on ice shelf stability and has drawn attention to the influence of both external (atmospheric, oceanic) and internal (glaciological) forcing on these events (Rott and others, 1996; Scambos and others, 2003, 2004, 2009; Glasser and Scambos, 2008; Braun and others, 2009; Banwell and others, 2013). However, there are comparatively few observations of the nature and timing of calving events around the East Antarctic Ice Sheet (EAIS). East Antarctica is characterised by numerous outlet glaciers terminating in prominent floating ice tongues and ice shelves, which are often buttressed by mélange and/or MYLI (Miles and others, 2016). Importantly, many of these outlet glaciers and ice shelves are located in marine-based sectors that are potentially vulnerable to ocean warming and marine ice-sheet instability, such as Wilkes Land (Miles and others, 2013; Miles and others, 2016; Rintoul and others, 2016; Shen and others, 2018; Rignot and others, 2019). Observations have shown that Wilkes Land is currently experiencing the highest rates of mass loss in East Antarctica, and has been losing mass at an accelerating rate (Shen and others, 2018; Rignot and others, 2019; Smith and others, 2020; Velicogna and others, 2020), with recent observations recording a $53 \pm 14 \text{ Gt a}^{-1}$ increase in ice discharge from this region since 2008 (Shen and others, 2018). Ice shelves here have been thinning (Pritchard and others, 2012), accompanied by grounding line retreat, and the acceleration and widespread retreat of outlet glaciers (Li and others, 2015; Miles and others, 2016; Konrad and others, 2018). These changes have been linked to enhanced basal melt driven by the influx of warm circumpolar deepwater (CDW) and seasonally warm Antarctic Surface Water entering ice shelf cavities (Rintoul and others, 2016; Adusumilli and others, 2020) and reductions in MYLI (Miles and others, 2017).

A synchronous break-up event at four outlet glaciers in Porpoise Bay, Wilkes Land, was recently linked to MYLI breakout and atmospheric circulation anomalies (Miles and others, 2017). This rapid disintegration occurred between January and April 2007 and resulted in a 1300 km^2 loss of ice from four outlet glacier tongues, whose calving fronts retreated by up to 28 km (Miles and others, 2017). A similar break-up $\sim 100 \text{ km}$ further west was also noted by Miles and others (2017), but not investigated. Here, we provide the first detailed observations of this event at Voyeykov Ice Shelf (VIS), which occurred from late March to late May

2007 and involved the disaggregation of adjoining ice mélange and partial loss of the ice shelf. Note that we refer to this as a 'disaggregation' event because it involved the rapid separation of mostly already-detached and fractured blocks of ice bounded by mélange and MYLI and a small region of relatively intact ice shelf. This is in marked contrast to the rapid disintegration of a much larger and intact ice shelf via intense hydrofracturing, as has been well-documented on the Antarctic Peninsula (Doake and Vaughan, 1991; Rott and others, 1996; Scambos and others, 2003; Banwell and others, 2013). During the event at VIS, the combined ice shelf-mélange area decreased from $\sim 3624 \text{ km}^2$ in February 2007 to $\sim 1179 \text{ km}^2$ in May 2007, totalling a loss of $\sim 2445 \text{ km}^2$, of which 9% was intact ice shelf fed by two glaciers. Since this mélange disaggregation and partial loss of the ice shelf, VIS has re-advanced, and in April 2020, the ice shelf area was $\sim 1650 \text{ km}^2$. Here, we identify the mechanisms that triggered disaggregation by comparing structural glaciological and climatic changes preceding and following this event. We first consider the potential roles of atmospheric and oceanic forcings and ice shelf dynamics (structural integrity, velocity, surface hydrology) in the disaggregation event. We then assess the evolution of the ice shelf following this disaggregation to investigate whether any changes provide indications of its potential near-future instability.

2. Data and methods

2.1 Study area

VIS ($66^\circ\text{S } 124^\circ\text{E}$) drains an area of $\sim 7104 \text{ km}^2$ into the 45 km wide Maury Bay in Wilkes Land (Fig. 1). We use the term 'ice shelf' in this location to describe the coalescing floating tongues of two tributary glaciers that terminate in an unconfined ice shelf, as opposed to an 'ice tongue', which is typically a protrusion of structurally-intact ice from a grounded glacier (e.g. Massom and others, 2015). However, we draw attention to the complex nature of VIS compared to many other unconfined Antarctic ice shelves and outlet glacier tongues, because it is heavily fractured and its calving front terminates in a dense ice mélange composed of calved ice blocks bound by perennial MYLI (Fraser and others, 2012, 2020, Fig. 1). Thus, VIS more closely resembles the present configuration of Thwaites Glacier tongue (Miles and others, 2020) and Holmes Glacier in Porpoise Bay (Miles and others, 2017). In this respect, VIS also differs from Greenlandic outlet glaciers in well-confined fjords, where mélange tends to form seasonally (Amundson and others, 2010; Cassotto and others, 2015; Moon and others, 2015).

Two tributary glaciers feed VIS; the largest, Blair Glacier, drains into the central portion of the ice shelf where ice flow velocity reaches $793 \pm 15 \text{ m a}^{-1}$ (Fig. 1, Rignot and others, 2017). The eastern part of the ice shelf is fed by Bell Glacier, which is faster-flowing (830 m a^{-1}) and exhibits steeper ice surface slopes ($\sim 20^\circ$) at the grounding line (Fig. 2, Howat and others, 2019). The western shear zone of Blair Glacier is characterised by a steep velocity gradient marking the transition to the slow-flowing ($<160 \text{ m a}^{-1}$), relatively inactive western part of VIS, which is grounded by several small pinning points (Fig. 1). Ice thickness is relatively consistent ($\sim 200 \text{ m}$) across the ice shelf but thickens to $\sim 420 \text{ m}$ at the grounding line (Fig. 2). Portions of the ice shelf experience relatively high measured mean surface melt rates ($>150 \text{ mm w.e. a}^{-1}$), which is higher than other East Antarctic ice shelves and ice tongues in Wilkes Land, such as Totten ($>100 \text{ mm w.e. a}^{-1}$) and Dibble ($>120 \text{ mm w.e. a}^{-1}$) (Trusel and others, 2013). Recent ice mass change estimates using height-change rate measurements from ICESat and ICESat2 laser altimetry have recorded an average thickening of 3.4 m a^{-1} between 2003 and 2019 over VIS (Smith and others, 2020). VIS

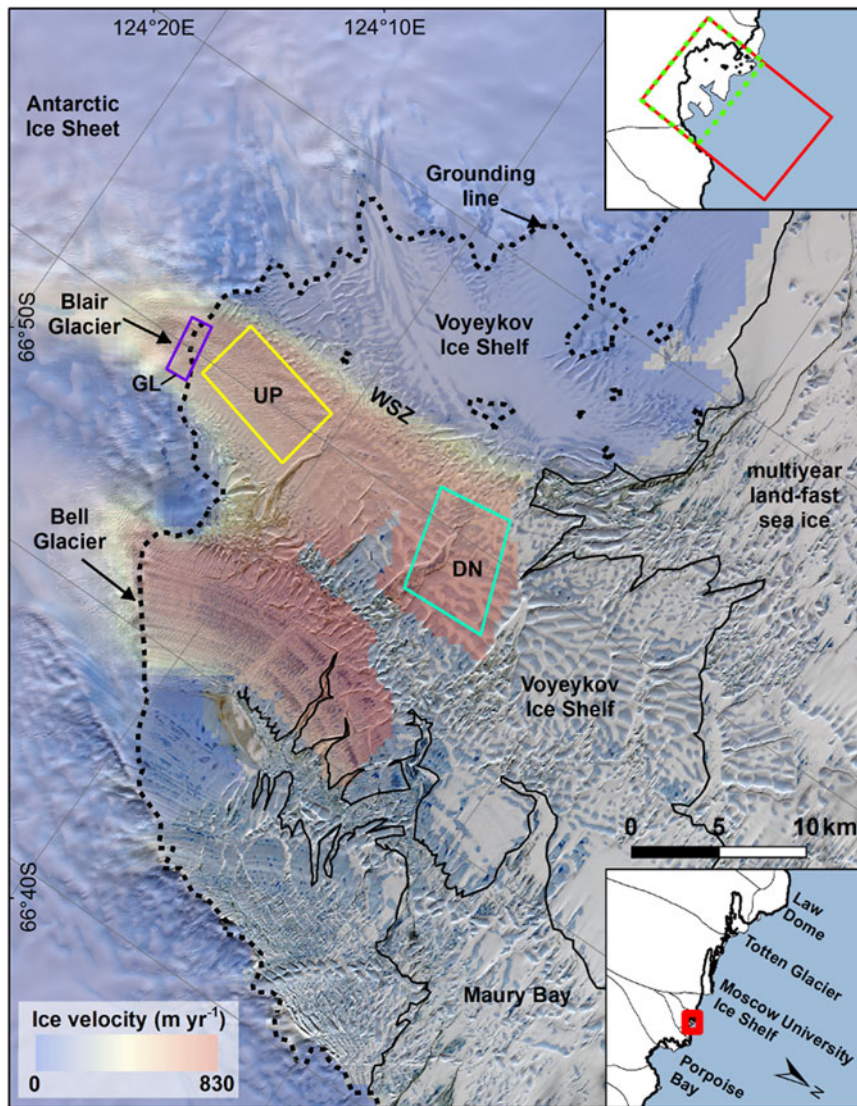


Fig. 1. Location map of Voyeykov Ice Shelf, East Antarctica. Background image is a Sentinel 2 scene (19/12/2019) overlain with ice flow velocities (Rignot and others, 2017). Grounding line (black dashed line) is from Rignot and others (2016) and calving front (black solid line) has been manually delineated from the 19/12/2019 Sentinel 2 scene. AMSR-E sea ice and RACMO data were extracted from the red and dashed green boxes (upper right inset), respectively. ITS_LIVE velocity data were extracted from the three boxes on the main map: the grounding line (GL), up-ice tongue (UP) and down-ice tongue (DN). WSZ marks the western shear zone.

has a low surface gradient; the elevation change from Blair Glacier terminus to the grounding line is only ~ 33 m over 16 km, while being slightly higher (~ 50 m over 20 km) from Bell Glacier terminus to the grounding line (Fig. 2). Bell Glacier occupies a retrograde bed slope reaching 789 ± 89 m below sea level ~ 15 km from the grounding line, while Blair Glacier mostly occupies a stabilising prograde slope reaching 671 ± 89 m below sea level ~ 8 km from the grounding line, which includes a ridge 9 km inland from the grounding line (Fig. 2, Morlighem and others, 2019).

2.2 Structural mapping (2000–2020)

To determine changes in ice shelf configuration and its structural integrity, structural features were manually mapped in ArcGIS from Landsat-7 and Envisat Advanced Synthetic Aperture Radar (ASAR) Image precision Mode satellite imagery following a similar approach to Holt and others (2013) and Glasser and Scambos (2008) (Table 1, Table S1). The following ice shelf features were mapped in each image: ice shelf/mélange front, rifts, crevasses and calved detached blocks (Table 1). To provide an independent estimate on ice shelf velocity for comparison with estimates from Inter-mission Time Series of Land Ice Velocity and Elevation (ITS_LIVE) annual velocity mosaics (Gardner and others, 2019) (Section 2.4), the down-ice migration of rifts on the ice shelf was tracked manually by identifying rift tips and calculated annual rates of rift propagation as

the change in rift tip position divided by the time between subsequent satellite images. To further constrain the specific timings of disaggregation, MODIS (Moderate Resolution Imaging Spectroradiometer) imagery was also used, though features were not mapped from this imagery owing to its lower (250 m) resolution.

Areas of landfast sea ice were identified based on commonly accepted criteria, i.e. the ice is consolidated, attached to the ice shelf front and adjacent coastline, and is persistently present in front of the ice shelf, and were verified against recently published maps of landfast sea ice (Table 1, Figs S6, S7, Giles and others, 2008; Fraser and others, 2012, 2020; Miles and others, 2017; Li and others, 2020; Massom and others, 2020). Delineating the boundary between landfast sea ice and mélange is somewhat subjective because the rough surface of deformed MYFI creates high backscatter (Giles and others, 2008), making the two difficult to distinguish. The sea ice–mélange boundary was identified by visually distinguishing between textural and brightness differences in SAR imagery. Following previous work, mélange was distinguishable as tightly packed calved ice blocks amalgamated with other calved material, which appear as much brighter (i.e. higher backscatter) in SAR imagery (Gladstone and Rigg, 2002; Fraser and others, 2012), whereas landfast sea ice tends to appear more homogeneous and darker (comparatively lower backscatter) (Giles and others, 2008; Massom and others, 2010).

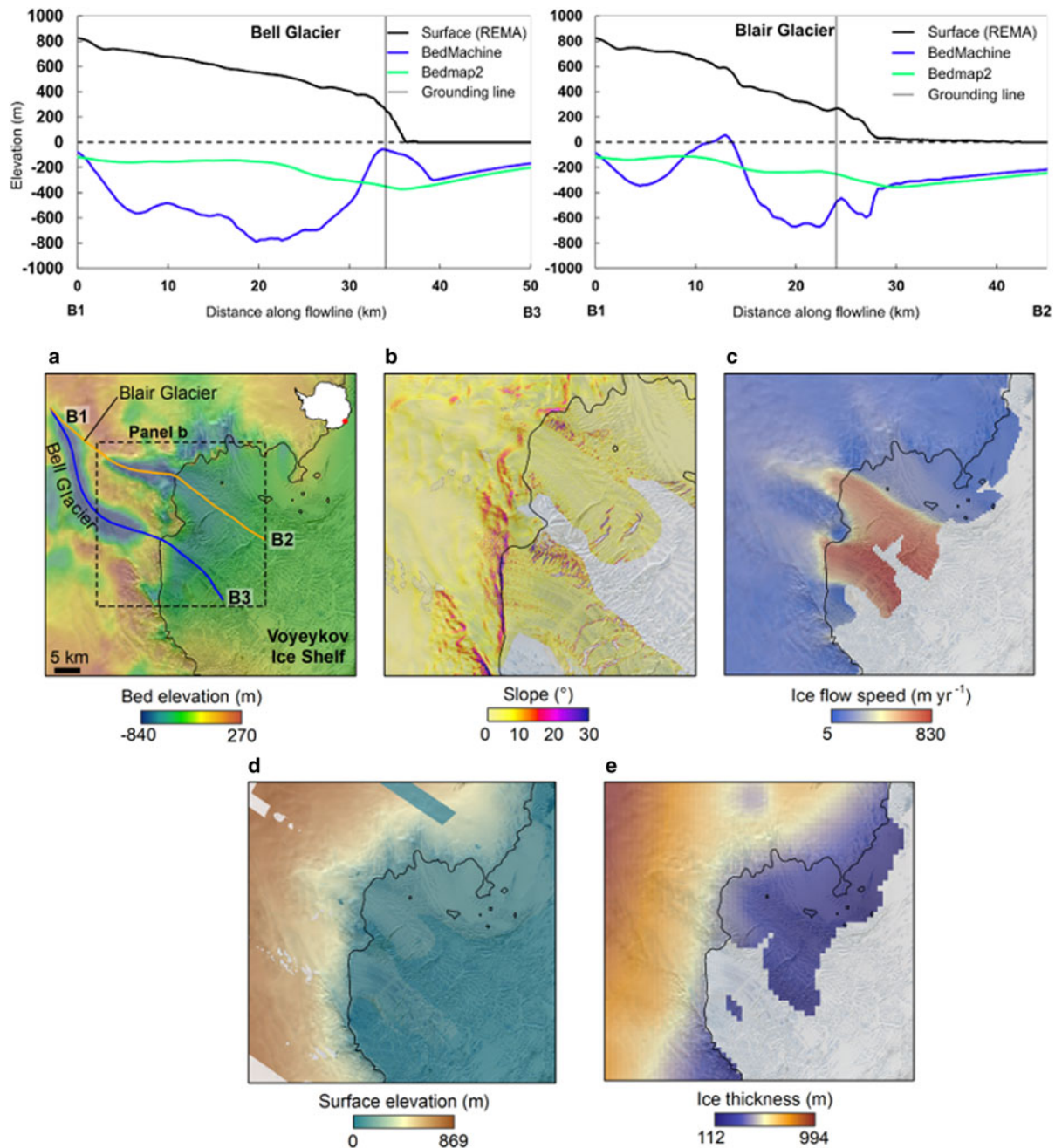


Fig. 2. (a) Cross-profiles of surface elevation (REMA, black) and bed elevation (BedMachine, blue, and Bedmap2, green) through Bell Glacier and Blair Glacier, the two tributary glaciers feeding Voyeykov Ice Shelf. BedMachine elevation is displayed in Panel a. (b) Ice surface slope (generated from REMA); (c) ice flow speed (MEaSURES); (d) ice surface elevation (REMA); (e) ice thickness (Bedmap2); (f) BedMachine bed elevation error; (g) Bedmap2 bed elevation error.

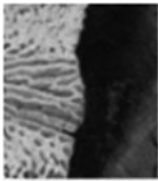
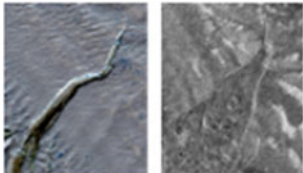
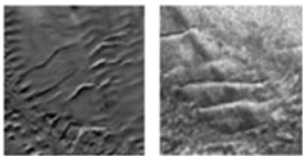
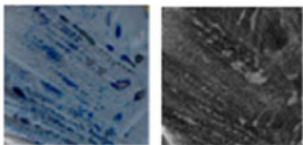
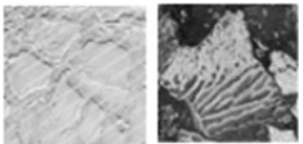

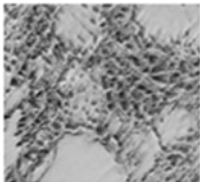
2.3 Surface meltwater mapping (2000–2020)

Supraglacial lake extents were mapped using the Google Earth Engine cloud computing platform and using Landsat-7 and Landsat-8 scenes automatically downloaded from Google Cloud (accessed via [gs://gcp-public-data-landsat/](https://gcp-public-data-landsat/) and [gs://gcp-public-data-sentinel-2/](https://gcp-public-data-sentinel-2/)). All available imagery over the 2000–2019 austral summers (November to February) were used. The image search was not filtered based on cloud cover, as scenes can contain high cloud cover while still leaving the ice shelf grounding zone visible, where lakes typically form. Only images where the ice shelf was clearly visible were used. Landsat images were Level 1C Tier 1 Top-of-Atmospheric (TOA) reflectance products, meaning they were geometrically-corrected and radiometrically-calibrated, so did not require any further pre-processing. Sentinel 2 imagery was not used due to the extremely low

temporal resolution over VIS resulting from frequent extensive cloud cover.

The Normalized Difference Water Index (NDWI_{ice}) adapted for ice was used to extract pixels containing liquid water, which uses the red and blue bands (Yang and Smith, 2013). A threshold value of 0.25 was applied, meaning pixels with NDWI > 0.25 were assumed to be water-covered, following previous studies (Bell and others, 2017; Banwell and others, 2019; Arthur and others, 2020; Dell and others, 2020; Moussavi and others, 2020). No exposed rock nunataks or outcrops are present in this region and we isolated clouds, cloud shadow, seawater, shaded snow and dark areas (such as crevasses), following Moussavi and others (2020) (Table 2). The same thresholds used by Moussavi and others (2020) were applied to the imagery, with the exception of a slightly higher cloud masking threshold for Landsat-7 (0.12). After applying

Table 1. Ice shelf features, identifying criteria and significance adapted from Holt and others (2013). See Figure 3 for full structural maps. Examples of ice shelf features from Landsat-7 (left) and Envisat ASAR imagery (right) are provided.

Feature	Example	Identification on satellite imagery	Significance
Ice terminus		Sharp transition from ice shelf calving margin to open ocean (in ice-free conditions) or sea-ice mélange. Sea ice appears darker than glacial ice.	Indicator of maximum ice shelf extent at a given point in time. Terminus position fluctuations record changing ice dynamics.
Rift		Ice shelf surface fracture with a visible opening, often forming perpendicular to ice flow direction and can be filled with ice mélange, meltwater lakes or seawater (or a combination).	Rifts form when internal ice stresses exceed a stress-dependent threshold. Rifts are indicators of historical and recent ice shelf activity. Tracking of advected rift features can be used to estimate ice flow velocity.
Crevasse		Surface features appearing as dark (open or water-filled) or bright (snow-covered) that penetrate partially through the ice shelf thickness and form perpendicular to the direction of maximum tension. Often form in distinct zones (crevasse fields).	Formed when the stresses within the ice exceed a given threshold. Open crevasses indicate extensional flow. Often form near the ice-shelf grounding line, along shear margins, or at the ice shelf front due to bending stresses (Scambos and others, 2003, 2009).
Surface meltwater lake/meltwater-filled crevasse		Distinct bright/dark objects in optical and SAR images; can form in existing topographic undulations.	Indicates sufficient surface melting for meltwater ponding in topographic depressions. Can indicate warmer atmospheric conditions, firm saturation and compressive stress regimes.
Calved ice block/iceberg		Clear distinct blocks detached from ice shelf terminus and surrounded by ice mélange or open ocean.	Indicates recent or active calving from ice shelf front. Calved blocks can become trapped in surrounding sea-ice mélange in front of ice shelf terminus.
Landfast sea ice		Consolidated sea ice attached to ice shelf front and/or coastline and grounded icebergs, often amalgamated with mélange (Giles and others, 2008; Fraser and others, 2020; Massom and others, 2010)	Presence is important in stabilising ice shelves/glacier tongues and in ice shelf-ocean interactions.
Mélange		An amalgamation of sea ice, marine ice, firm and densely packed calved icebergs.	Known to exert a buttressing force on floating glacier tongues and ice shelves and can modulate the frequency of major calving events and disintegration.

Adapted from Holt and others (2013). See Figure 3 for full structural maps. Examples of ice shelf features from Landsat-7 (left) and Envisat ASAR imagery (right) are provided.

Table 2. A summary of the processing steps, satellite imagery bands, band calculations and thresholds applied to Landsat-7 and Landsat-8 images for mapping supraglacial lake extents

Processing step	Bands	Landsat-7		Landsat-8	
Water classification (NDWI)	Blue and red	$\frac{(B1-B3)}{(B1+B3)}$	0.25	$\frac{(B2-B4)}{(B2+B4)}$	0.25
Cloud masking (NDSI)	Green and SWIR	$\frac{(B2-B5)}{(B2+B5)}$	0.8 and B5 > 0.1	$\frac{(B3-B6)}{(B3+B6)}$	0.8 and B6 > 0.1
Rock/seawater masking	Blue and TIRS	$\frac{(B1)}{(B6)}$	0.65 and B1 < 0.35	$\frac{(B2)}{(B10)}$	0.65 and B1 > 0.35
Cloud shadow masking	Green and red	B2 – B3	0.12	B3 – B4	0.09
Shaded snow masking	Blue and green	B1 – B2	0.07	B2 – B3	0.07

these masks, binary masks of ‘water-covered’ (i.e. supraglacial lake) versus ‘non-water covered’ pixels were created for each Landsat-7 and Landsat-8 scene. Each lake mask was manually inspected to verify that no false classifications were included and the total area of

water-covered pixels was calculated from the final classification result for each image to produce a time series of surface meltwater extent on the ice shelf from 2000 to 2020. Errors are estimated to be low because the automated cloud, rock and seawater masking were

applied to reduce misclassification errors. Moussavi and others (2020) found an accuracy of >94% when comparing lake extents derived from the same automated methods with manually digitised polygons. A conservative uncertainty of 1% is therefore assigned to the total lake area for each time step, following Stokes and others (2019) and Arthur and others (2020).

2.4 Annual velocity fields (2000–2018)

Average annual velocity values were extracted from the NASA Making Earth System Data Records for Use in Research Environments (MEaSUREs) Inter-mission Time Series of Land Ice Velocity and Elevation (ITS_LIVE) annual velocity mosaics (Gardner and others, 2019). These mosaics are available at a spatial resolution of 240 m and surface velocities are derived from Landsat-4, -5, -7 and -8 imagery using auto-RIFT feature tracking (Gardner and others, 2018). Annual velocity mosaics are the error weighted average of all image-pair results with centre dates that fall within a given calendar year. Average annual velocity was extracted from boxes GL (grounding line), UP (up-ice tongue) and DN (down-ice tongue) in Figure 1 to compare changes in annual velocities over the ice shelf grounding line, and the upper and lower portions of Blair Glacier's floating ice tongue. This was done in order to assess whether disaggregation had a dynamic impact on grounded ice upstream of VIS and to assess whether ice close to the calving front has behaved similarly to ice nearer the grounding line. The location and extent of boxes GL, UP and DN were constrained by the data coverage of ITS_LIVE annual velocity mosaics. Data gaps prevented us from extracting velocities over Bell Glacier, or other parts of the ice shelf. Velocity difference maps were generated by subtracting annual velocity mosaics in ArcGIS. Annual mosaics with incomplete coverage over DN (2001, 2002, 2006) were discarded. Data scarcity and/or low radiometric quality are significant limiting factors for many regions in the earlier product years over VIS. Consequently, no velocity data are available for the years 2003–2005. This results in higher velocity errors and lower image-pair counts (i.e. the number of velocities used in the weighted average) in earlier years. To assess errors, minimum and maximum values of image-pair count and velocity error provided with each annual mosaic were extracted from boxes GL, UP and DN (Tables S2–4). Gardner and others (2019) suggest that errors provided with the mosaics should be used as qualitative metrics only, and therefore the conservative approach was taken off using the average maximum velocity errors for each year.

2.5 Ice surface and bed topography

Ice surface topography profiles were extracted from the Reference Elevation Model of Antarctica (REMA) digital elevation model, which has an 8 m resolution and is derived from stereophotogrammetry with optical satellite imagery registered to satellite radar and laser altimetry (Howat and others, 2019). Bed topography profiles were also extracted from the BedMachine (Morlighem and others, 2019) and Bedmap2 (Fretwell and others, 2013) datasets. BedMachine has a 500 m horizontal resolution and is derived from mass conservation in this area. Profiles followed the two main outlet glaciers feeding the ice shelf extending ~30 and ~35 km from the grounding line (Fig. 2). Maximum estimated bed elevation error over VIS and adjacent grounded ice is 202 m for Bedmap2 and 89 m for BedMachine, and mean estimated bed elevation errors are 145 and 52 m, respectively (Fig. 2).

2.6 Sea ice (2007)

Average daily sea-ice concentration anomalies (i.e. deviations from the long-term daily average) were calculated offshore of

VIS from 2002 to 2011 within a 3290 km² polygon (red box in Fig. 1). We acknowledge this region includes the area of ice mélange and MYLI, so is likely to capture the disaggregation event itself. Therefore, to examine sea-ice changes more closely in the region of mélange/MYLI compared with drifting pack ice further offshore, we also extracted sea-ice concentrations from a 1032 km² box immediately in front of VIS and from a 4420 km² box in the region of drifting pack ice ~37 km offshore (Fig. S8). The extent of this larger box was determined by the spatial limit of the AMSR-E data. Daily sea-ice concentrations from Spreen and others (2008) were used, which are derived from the ARTIST Sea Ice (ASI) algorithm applied to microwave radiometer data of the Advanced Microwave Scanning Radiometer – EOS (AMSR-E) sensor on the NASA satellite Aqua. This AMSR-E data covers the period 2002–2011. These data are available at 6.25 km, daily resolution and extend directly to the ice shelf front, unlike coarser temporal and spatial resolution products, such as Nimbus-7. The sensor measures the brightness temperature (i.e. microwave radiance), which is converted to sea-ice concentration by applying the ASI algorithm. The absolute error at 0% sea-ice concentration is 25%, decreasing to 5.7% at 100% sea-ice concentration, and for sea-ice concentration above 65%, the error is <10% (Melsheimer, 2019). Error reduction at higher sea-ice concentrations can be attributed to the reduced influence of open water or high cloud liquid water (atmospheric opacity) on the measured brightness temperature (Spreen and others, 2008). The ASI algorithm uses a weather filter process method to remove spurious ice concentration close to open water (Spreen and others, 2008).

2.7 ERA5 surface air temperature and wind speed and direction (2000–2020)

The nearest automatic weather station is 505 km away from VIS, and so daily average 2 m near-surface air temperature from the European Centre for Medium-Range Weather Forecasts ERA5 reanalysis was used, which is provided at 0.25 degree (~31 km) daily resolution. Daily average near-surface air temperature was extracted for austral summers 2000–2019 from within a 1480 km² polygon over the ice shelf and its grounding zone (Fig. 1). Mean monthly wind fields were calculated by using the ERA5 daily average 10 m zonal (U) and meridional (V) wind stress components to derive wind speed ($W_{spd} = \sqrt{U^2 + V^2}$) and wind direction ($W_{dir} = \tan^{-1}(-U, -V)180/\pi$). Mean monthly wind fields were also used to derive mean monthly ERA5-derived wind speed and direction anomalies relative to the 2000–2020 monthly means over the ice shelf region from the red box in Figure 1. ERA5 has been shown to be accurate in reproducing local climate variability and prevailing wind regimes on the Antarctic Peninsula, with only a small negative bias in near-surface air temperature and wind speed (Tetzner and others, 2019; Bozkurt and others, 2020).

2.8 Surface melt rates (2000–2019)

Mean modelled snowmelt was extracted over the ice shelf from daily surface melt flux outputs for the period 2000–2019 generated by the Regional Atmospheric Climate Model (RACMO) version 2.3p1, which has a horizontal resolution of 27 km. These melt fluxes represent the production and presence of melt on the ice shelf surface, not the fate of melt (refreeze or runoff) (Trusel and others, 2013). Full details of the model can be found in Van Wessem and others (2018). RACMO2.3 has been shown to realistically simulate the surface mass balance of East Antarctica (van Wessem and others, 2014). At this resolution, RACMO2.3 is known to be unable to fully resolve localised atmospheric processes around ice shelf grounding zones, including katabatic winds and enhanced turbulent mixing,

but higher resolution model outputs are not yet available for this region of East Antarctica (Van Wessem and others, 2018; Arthur and others, 2020).

3. Results

3.1 Structural evolution before, during and after the 2007 disaggregation

Structural changes in the ice shelf both prior to (December 2001 to February 2007) and after the disaggregation event (April 2007 to April 2020) are shown in Figures 3 and 4. In 2001, well-established rifts up to 7 km wide dominated the central portion of VIS as far as ~25 km inland from the ice shelf calving front (Figs 3b, 4a–e). These rifts are mostly transverse (perpendicular to flow), filled with mélange, MYLI and snow, and are present in all pre-disaggregation images of VIS. We note MYLI surrounding Maury Bay was in a partially fractured state in MODIS imagery from March 2006. Fractures in the MYLI and mélange are visible in a MODIS image captured on 7 April 2006 and correspond with the later position of the calving front post-disaggregation. By November 2006, some of the major rifts had widened by over 1 km and had propagated up to 4 km across the lower portion of VIS, producing large ice blocks bound together by MYLI (Fig. 3c). In January and February 2007, we note the formation of open marine water-filled rifts up to 4 km long in the MYLI close to the calving/mélange front (Figs 3d, e). Our mapping showed that meltwater lakes and areas of meltwater-filled crevasses have almost exclusively been confined to Bell Glacier tongue (Figs 4b, c). Between 8 and 15 January 2007, lakes became more extensive (Figs 4c, d), but we did not record any large zones of meltwater-filled crevasses on or within the major rift system on the central portion of VIS. We note this is likely to reflect the routing of surface meltwater into these rifts on VIS.

The disaggregation event occurred between 27 March and 2 April 2007 and removed ~2225 km² of ice. It was characterised by the evacuation of pre-calved blocks and surrounding mélange from in front of VIS into the open ocean (Figs 3f–i). By 28 May, large blocks (up to 47 km²) detached from the calving front following pre-existing interconnected rifts on the lower portion of VIS, causing a loss of 220 km² from the ice shelf (Figs 3h, 4f, g). This loss of ice appears to have been initiated by the removal of part of the ice shelf and mélange near the calving front in the WSZ (Figs 3e, f). In the post-disaggregation image acquired from September 2007, disaggregation had ceased and no further major calving events had taken place (Fig. 3i). We recorded further fracturing and propagation of a rift network on Bell Glacier's lower tongue into discrete blocks bound by mélange (Figs 3j–m). The majority of the mélange-bound material produced during the 2007 disaggregation appears to have remained in place until present (i.e. April 2020, Figs 4g–i). We did, however, observe a continued loss in structural integrity in the WSZ, as indicated by the opening of a large transverse rift on the lower portion of VIS near the calving front and the production of new fractured icebergs (Fig. 4i). In summary, our observations indicate that the disaggregation of ice mélange adjoining VIS and partial ice shelf loss involved a total loss of ~2445 km² and was preceded by major rift widening and propagation. Since the event, there is evidence of ongoing fracturing, rifting and calving front advance on the main portion of the ice shelf.

3.2 Annual ice velocity variations

Between 2000 and 2007, no significant (i.e. greater than maximum estimated errors) changes in ice flow velocity on the

upper tongue of Blair Glacier nor at the grounding line (Fig. 5a; see Tables S2–4 for errors). We noted higher maximum velocity magnitude errors (up to ±35%) during this period due to low image counts (i.e. the number of velocities used in the ITS_LIVE weighted averages). Gaps in ITS_LIVE data unfortunately prevented us from assessing ice flow velocity changes on Bell Glacier tongue, as well as on the distal portion of Blair Glacier tongue prior to 2007. However, results from manual rift tracking generally show comparable ice flow velocity to those extracted from ITS_LIVE annual velocity mosaics (Fig. S2, Table S5), and the distal part of Blair Glacier tongue pre-2007 decelerated between 2001 and 2006, in agreement with observations closer to the grounding line (Fig. 4a, Table S5). Ice flow velocity on VIS decreased until 2009 following disaggregation in 2007; the distal portion of the ice shelf decelerated by 11% (±3%) and ice closer to the grounding line decelerated by 4% (±2%) (Fig. 5a). Ice flow on the distal portion of its tongue steadily decreased from 2013 until 2018 (Fig. 5a).

Although the overall picture is one of deceleration, isolated areas of acceleration extended to the calving front between 2006 and 2007, as well as a band of flow acceleration (up to 115 m a⁻¹) along the WSZ between 2007 and 2008 (Figs 5e, f). Two further periods of acceleration occurred across the central portion of VIS and upstream of the grounding line between 2009 and 2010, which accelerated by 7% (±4%) and by 11% (±2%), respectively, and between 2012 and 2013 (Fig. 5h; Fig. S1). However, these were short-lived and were not associated with any significant calving or disaggregation events. We suggest this acceleration could be related to the gradual dispersal of mélange and large calved ice blocks away from the VIS calving front. In other years, changes in ice flow velocity were more mixed, with areas of deceleration and acceleration (Figs 5d–j; Fig. S1). In summary, our observations recorded no significant ice flow velocity acceleration in the years immediately prior to or following the disaggregation event.

3.3 Variability in atmospheric and sea-ice conditions

Between 2000 and 2006, several short-lived (<7-day) high magnitude (>12 mm w.e. a⁻¹) melt events were simulated by RACMO2.3 during the summer melt seasons (Fig. S4). Prior to disaggregation, two short-lived (4-day and 3-day) intense (12.6 and 16.5 mm w.e. a⁻¹) melt events were simulated by RACMO2.3 on 11 January and 30 January 2007, which corresponded with a 0.5–3.7°C increase in mean near-surface air temperature over the same period (Fig. 6). We define the start of both melt events as being from when mean surface melt was 0 mm w.e. a⁻¹ until when it peaked, meaning the first melt event was between 8 January (–1.7°C) and 11 January (2.0°C), i.e. a 3.7°C warming. Similarly, this means the second melt event was between 28 January (–2.1°C) and 30 January (–1.6°C), i.e. a 0.5°C warming. We recorded more extensive supraglacial lake coverage during the 2006–2007 austral summer, when total lake area was >1σ higher than the 2000–2020 mean (Fig. 7). During this melt season, several lakes drained englacially into the firn or through the ice shelf over a 1-month period while neighbouring lakes grew or did not change in area (Fig. S3). Since 2007, near-surface air temperature and surface melt have generally remained low (≤12 mm w.e. a⁻¹, fewer than 10 days >0°C per melt season) (Fig. S4). Our supraglacial lake data recorded peaks in total lake area during the 2013–2014 and 2019–2020 melt seasons, when total lake area exceeded 2σ from the 2000–2020 mean (Fig. 7). We note that total lake area is considerably less than on other Antarctic ice shelves (Fig. 7; Stokes and others, 2019; Arthur and others, 2020; Dell and others, 2020), and has not exceeded 9 km² since 2000 (<1% of the ice shelf area), though this partly reflects both the small total ice shelf area and

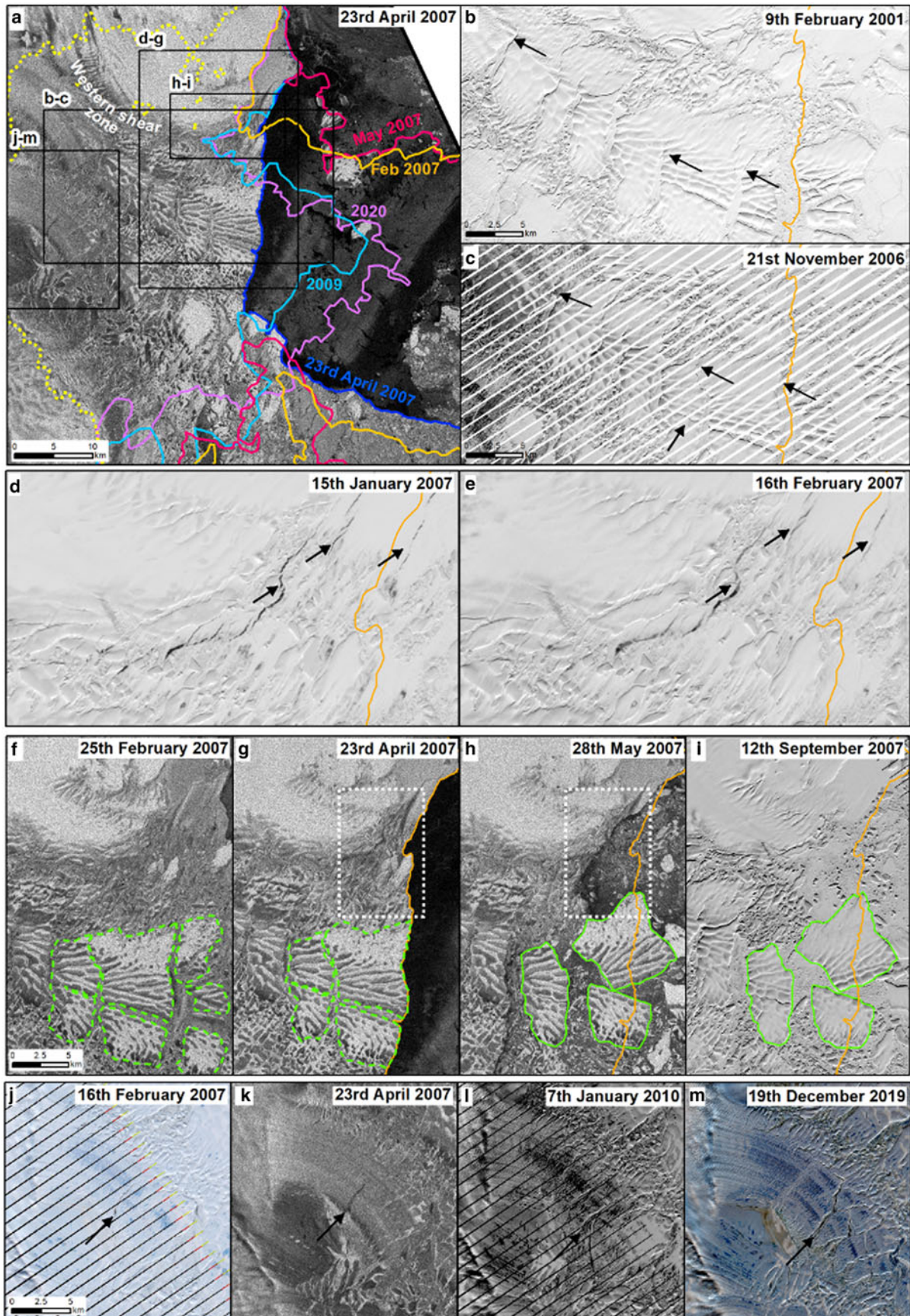


Fig. 3. Structural transition of Voyeykov Ice Shelf (VIS). (a) Ice shelf calving front/mélange extents from 2007, 2009 and 2020 overlain on an Envisat ASAR image from 23 April 2007. The grounding line (dashed yellow line) is from the MEaSUREs dataset (Rignot and others, 2017). (b–c) Landsat-7 images showing rift widening and propagation in the central portion of VIS between 2001 and 2006. (d–e) Landsat-7 imagery showing multiyear landfast sea-ice rifting and weakening prior to disaggregation in April 2007. (f–i) Envisat ASAR and Landsat-7 imagery showing removal of ice mélange from near the calving front in the western shear zone following major terminus retreat, resulting in detachment and rotation of large ice blocks and further ice shelf disaggregation. The white dashed box highlights the area of mélange removal. Ice blocks before and after detachment are highlighted by green dashed and solid lines, respectively. The April 2007 terminus position is marked by an orange line. (j–m) Landsat-7, Envisat ASAR and Landsat-8 imagery showing the progressive structural weakening of Bell Glacier, eastern VIS and widespread supraglacial lakes and meltwater-filled crevasses. Surface meltwater is also visible on the surrounding mélange. In Panels b–c and h–m, the black arrows point to the development of rifts in each image. The locations of Panels b–m are marked in Panel a.

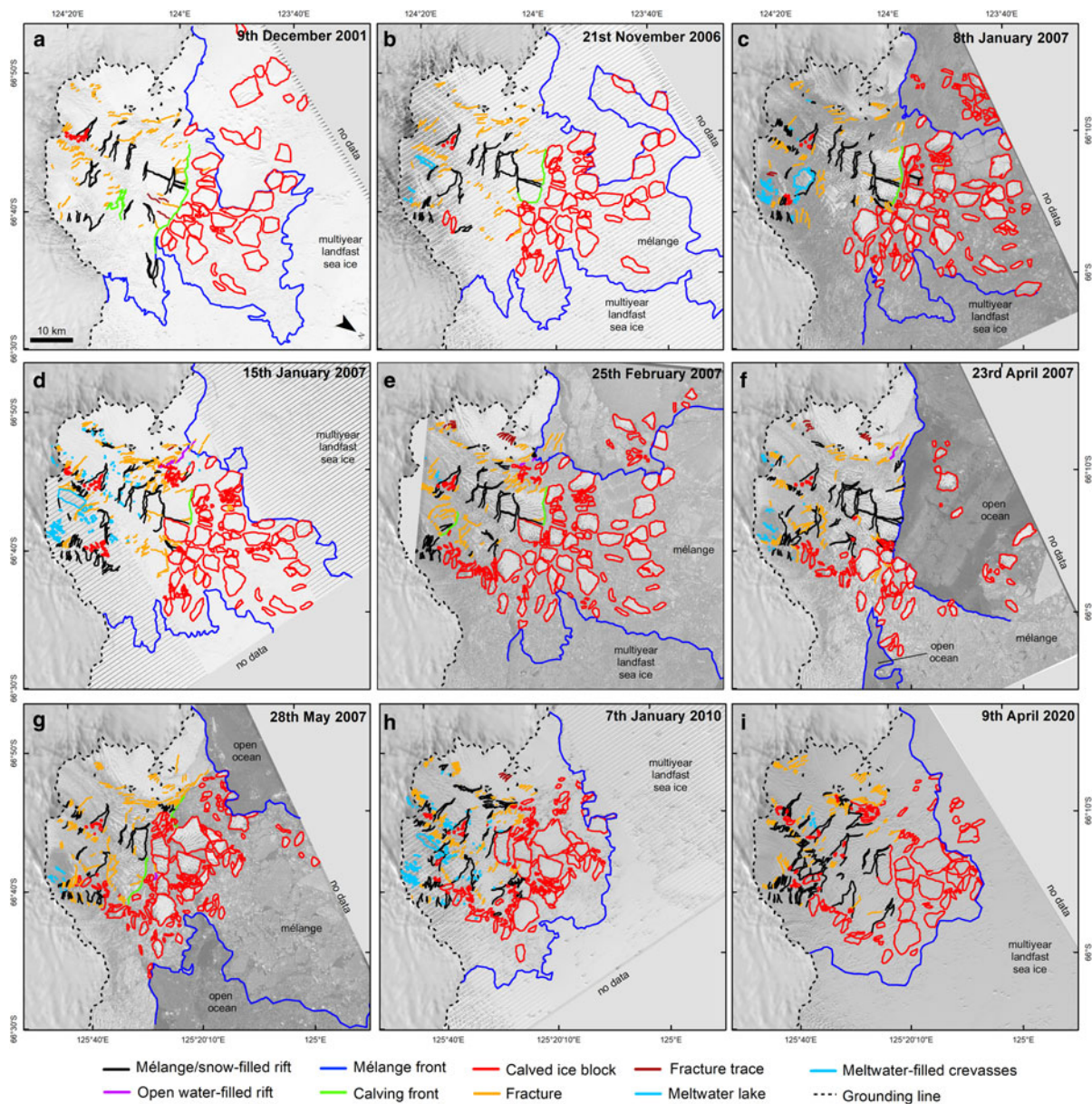


Fig. 4. Structural ice shelf analysis pre- (a–e) and post- (f–i) disaggregation between 2001 and 2020 mapped from Landsat-7 and Envisat ASAR images. Note the continued presence of mélangé which cemented together large detached ice blocks with VIS in the years prior to disaggregation (a–e), and the major rifts which widened and propagated across the lower portion of VIS by January 2007 (a–d). Disaggregation in May 2007 followed this pre-existing rift network, when large blocks (up to 47 km²) detached from the ice shelf (g). Since disaggregation, mélangé continues to bind the ice shelf and remnant calved blocks (h–i). Panels f and g are outlined in bold to highlight the disaggregation event.

its heavily rifted surface through which meltwater can drain before it can accumulate as lakes. In summary, during the 2006–2007 melt season preceding disaggregation, VIS experienced short-lived intense surface melting and above-average supraglacial lake coverage, though surface meltwater does not accumulate extensively on VIS.

Our analysis of daily sea-ice concentration anomalies (from the red box in Fig. 1) from June 2002 to September 2011 revealed lower-than-average mean sea-ice concentrations in the autumn-winter (March to August) of 2004 and 2011, and the winter-spring (June to November) of 2005 and 2010 (Fig. 8). Notably, we observed a major negative sea-ice concentration anomaly between the end of March and the end of April 2007, when mean April sea-ice concentration deviated by 33% from the long-term (2002–2011) April average (Fig. 8; Fig. S8). This negative anomaly coincided with MYLI breakout and the transition from mélangé to open-ocean in front of VIS visible in MODIS and Envisat SAR

imagery in April 2007 (Figs 2, 3, 8). Indeed, both the mélangé/MYLI and the drifting pack ice further offshore experienced a sharp decline after 30 March, returning to concentrations above 90% by 27 April (Fig. S8). MYLI breakout was short-lived and was preceded and followed by greater-than-average mean sea-ice concentrations in March and May 2007 (Fig. 8). The increase in mean sea-ice concentrations in May corresponds with further disaggregation, when the bay became choked with large, calved blocks and mélangé (Figs 3g, 8). MODIS imagery also shows that the MYLI surrounding VIS was in a fractured state in the preceding year in April 2006 (Fig. 8). ERA5 wind field estimates suggest a shift from southerly to south-easterly prevailing winds between March and May 2007 offshore from VIS (Fig. 9), though mean wind speed and direction over VIS were close to average during these months (Fig. 10). We note, however, strong south-easterly winds in the preceding winter (July–August 2006; Fig. 10). In summary, we recorded a strong temporal coincidence between a major

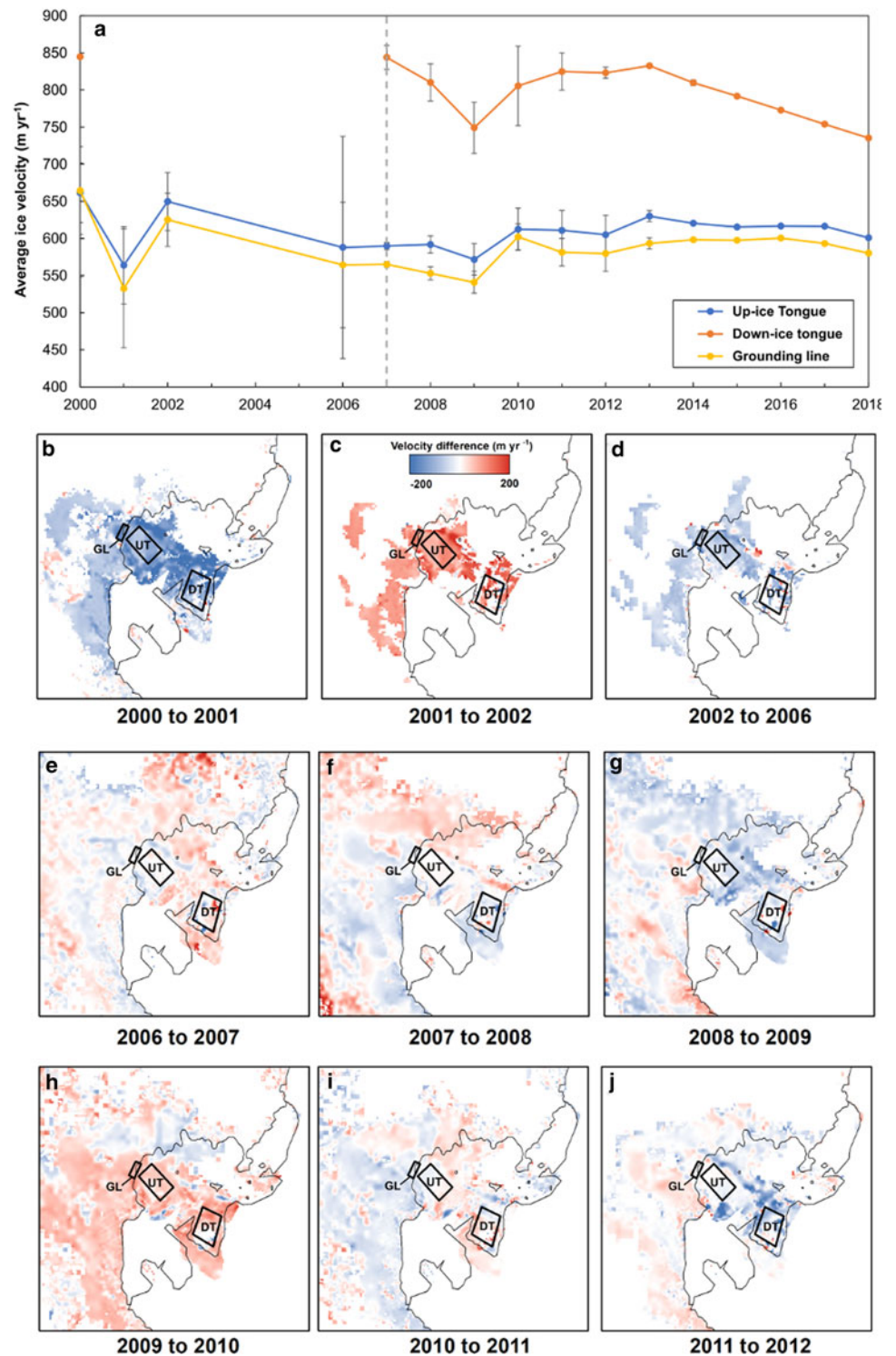


Fig. 5. (a) Average ice velocity time series between 2000 and 2018 extracted from the grounding line (GL), up-ice tongue (UP) and down-ice tongue (DN). The dashed grey line marks the disaggregation event in 2007. Error bars are maximum ITS_LIVE velocity magnitude errors (Tables S2–4). (b–j) Velocity differences between annual ITS_LIVE velocity mosaics on Voyeykov Ice Shelf between 2000 and 2012. Annual velocity mosaics are the error weight average of all image-pair results with centre dates that fall within a given calendar year. Black boxes mark the locations where average annual velocity was extracted (Panel a). No velocity data are available covering the eastern portion of the ice shelf fed by Bell Glacier.

reduction in MYLI and disaggregation and removal of ice mélange which was followed by partial loss of the ice shelf.

4. Discussion

4.1 What caused the April–May 2007 disaggregation event?

Figure 11 summarises the chronology of changes on the VIS in the 7-year period leading up to the disaggregation event, its evolution post-disaggregation and the potential forcings. We now consider the structural precursors to the disaggregation, followed by the role of these forcings in triggering the break-up. We then discuss the evolution of the ice shelf

post-disaggregation and the implications for its future stability.

4.1.1 Structural precursors to the disaggregation event

Our observations show that extensive ice shelf rifting played an important role in increasing the susceptibility of VIS to disaggregation in March–May 2007. Major rifts have been present on VIS since the beginning of our observation period in 2000 (Figs 2, 3). Between December 2001 and April 2007, we recorded widening and propagation of some of these major transverse rifts on the main portion of VIS, but do not observe substantial increases in the total number of rifts (Figs 3, 4). Although rifts within the

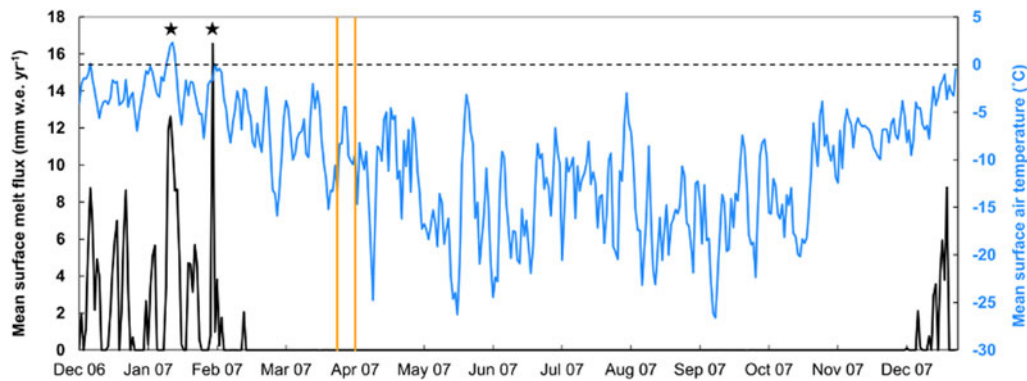


Fig. 6. Time series of mean average surface melt flux (RACMO2.3) and near surface air temperature (ERA5) for the period 1 December 2006 to 31 December 2007. The orange bars indicate the time period during which the 2225 km² disaggregation occurred (27 March–4 April) based on cloud-free MODIS imagery, though we note that the ice shelf continued to disaggregate in May. The two short-lived intense surface melt events are marked with a black star. Similar magnitude surface melt events are simulated by RACMO2.3 in other melt seasons, including 2004, 2005 and 2006 (Fig. S4).

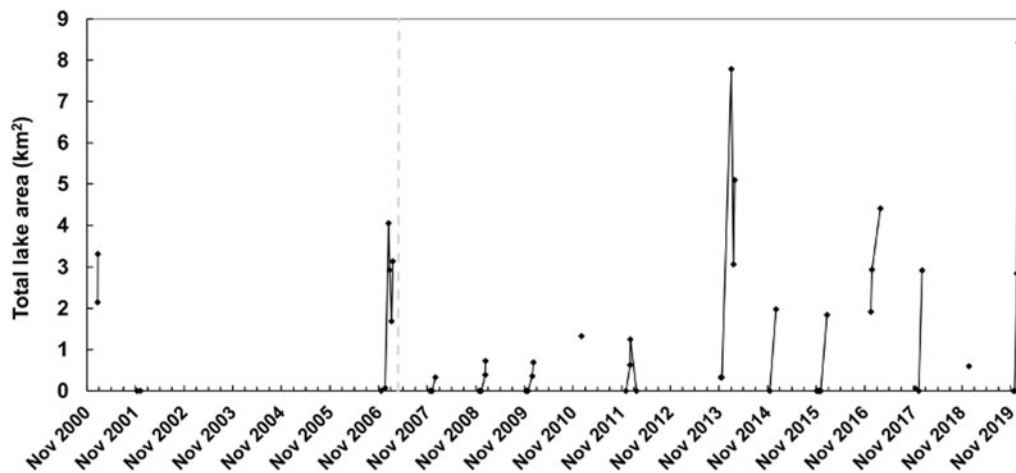


Fig. 7. Evolution of total supraglacial lake area from 2000 to 2020 on Voyeykov Ice Shelf. The dashed grey line marks the disaggregation event in 2007.

ice shelf are likely to have widened and lengthened over time as VIS advanced, we speculate that rift widening could be as a result of weakening of the ice mélange within these rifts and with it the resistance for rifts to propagate laterally. Rift enlargement and propagation has been attributed to the weakening and/or removal of stabilising mélange on the Brunt-Stancomb Wills Ice Shelf (Khazendar and others, 2009) and George VI Ice Shelf (Holt and others, 2013). Similarly, mélange thinning from atmospheric or oceanic melting has been linked to rift propagation on the Ronne Ice Shelf (Larour and others, 2004). At the same time, ice flow velocity did not change significantly on VIS nor at the grounding line (Fig. 5). This response is consistent with VIS already being in a highly fragmented state (Wearing and others, 2020). Furthermore, extensional stresses are not conducive to ice shelf ponding because they generate crevasses and fracturing, which route meltwater through the ice shelf before it can pond (Glasser and Scambos, 2008). This explains the general absence of melt ponds across the central portion of VIS (Fig. 3).

In contrast to topographically-confined ice shelves, the unconfined geometry of VIS means that it is unlikely to provide substantial buttressing to grounded inland ice (Borstad and others, 2016; Fürst and others, 2016; Wearing and others, 2020). While VIS did not display any structurally unusual behaviour before it disaggregated, this contrasts with previous ice-shelf break-ups on the Antarctic Peninsula (Scambos and others, 2000, 2004, 2009; Rignot and others, 2004; Glasser and Scambos, 2008;

Braun and others, 2009). In summary, our observations show that disaggregation was pre-conditioned by the presence of rifts on VIS, causing the detachment of major ice blocks from the ice shelf along these pre-existing weaknesses in April–May 2007. Thus, as a result of its unconfined setting, the reduced structural integrity of VIS primed it for rapid disaggregation.

4.1.2 The role of mélange in the disaggregation event

We report the complete removal of ~2225 km² of mélange adjoining VIS and detached ice blocks from the terminus of VIS in April 2007, which was followed by the loss of 220 km² from the ice shelf during May 2007 (Figs 2, 3). We suggest the mélange provided some degree of mechanical coupling and enhanced the structural integrity of the ice shelf by filling interconnected rifts and cementing together large, detached ice blocks in the decades prior to disaggregation (Fig. 3). Although there are no long-term observations of mélange thickness or mechanical strength within the rifts in or in front of VIS, the mélange laden with MYLI has advanced as a single cohesive unit with VIS since 2001 (Fig. 4). This coherent advection coupled with the lack of major block rotation prior to May 2007 indicates that the combined ice block-mélange region provides some rigidity and behaves as a mechanically-connected unit, similar to Mertz Ice Tongue and the Brunt Ice Shelf (Massom and others, 2010; King and others, 2018; Joughin and others, 2020). Furthermore, mélange-filled rifts have been present on VIS since 1989 (visible in Landsat-4

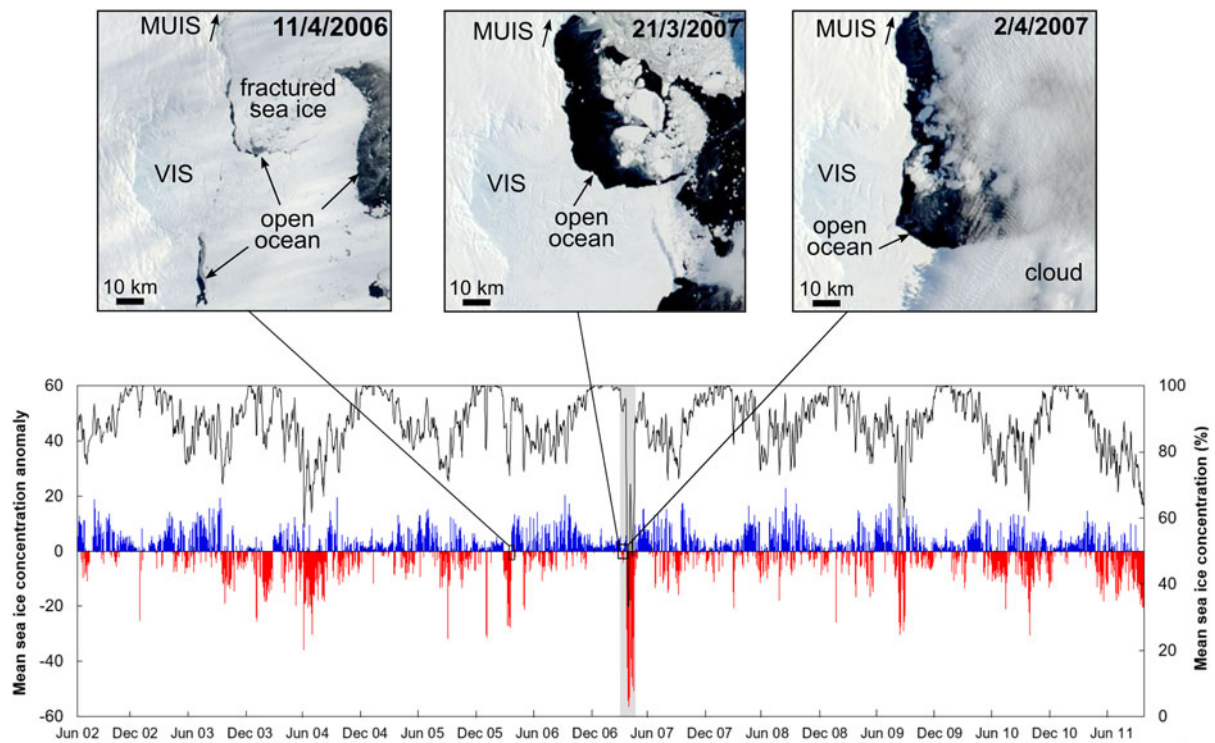


Fig. 8. Mean daily sea-ice concentration anomalies (deviations from the long-term (2002–2011) daily mean) extracted from a 70 km × 46 km box extending 42 km offshore from the ice shelf (see Fig. 1). Positive anomalies are shown in blue and negative anomalies are shown in red. Ice shelf disaggregation (indicated by the grey bar) coincides with a substantial negative sea-ice concentration anomaly. The black line represents a 5-day moving average of daily mean sea-ice concentration. Three example MODIS images show multiyear landfast sea ice was already in a weakened state in 2006, and the breakup of sea ice which expanded eastward from Moscow University Ice Shelf (MUIS) towards Voyeykov Ice Shelf (VIS), leading to its disaggregation in March–April 2007.

Multispectral Scanner imagery, Fig. S5), so we estimate the mélange to be at least 31 years old in places. For comparison with perennial MYLI elsewhere in East Antarctica, thick (10–35 m) MYLI attached to Mertz Glacier Tongue has been estimated as being up to 35 years old (Massom and others, 2010). We suggest that the mélange had sufficient strength to trap large, calved fragments for years before they could be transported away from ice shelf front. InSAR observations show mélange in older rifts is likely to have greater mechanical strength (Rignot and

MacAyeal, 1998). We note that mélange has continued to mechanically bind the ice shelf and remnant calved blocks since disaggregation (Figs 2l, m). Idealised modelling has shown that ice shelves stabilised by the presence of MYLI (such as Thwaites, Mertz and Totten) can provide some limited buttressing as the MYLI may prevent large-scale fracturing and break-up (Wearing and others, 2020). However, the lack of immediate speed-up after disaggregation indicates the disaggregated portion of VIS and proglacial mélange did not exert a significant

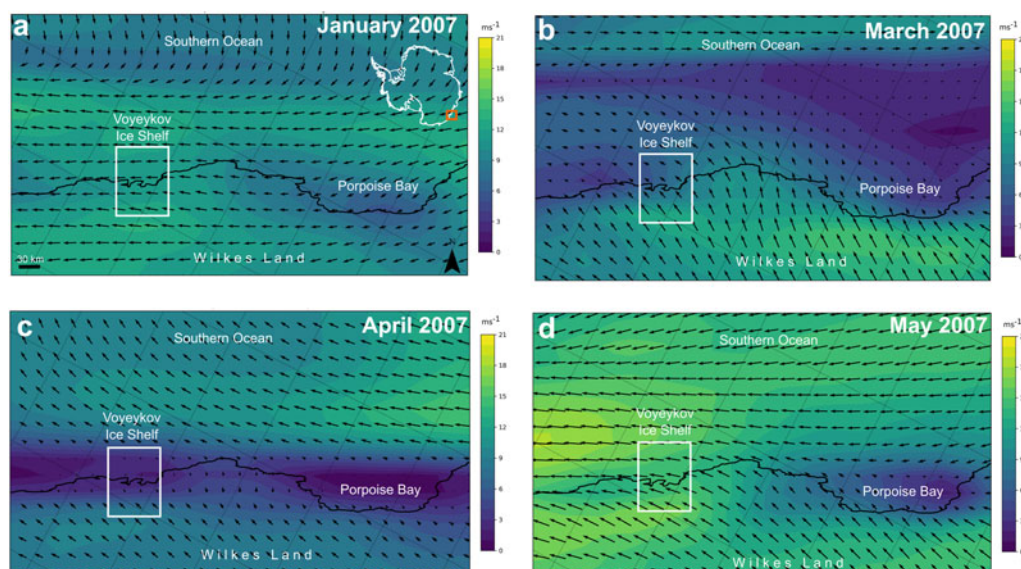


Fig. 9. Mean monthly ERA5-derived wind speed and direction in the region of Wilkes Land covering Voyeykov Ice Shelf (white box) in the months preceding disaggregation (a–b) and during disaggregation (c–d). Wind direction vectors are represented by the black arrows. Note the shift to south-easterly prevailing winds offshore of VIS in May 2007.

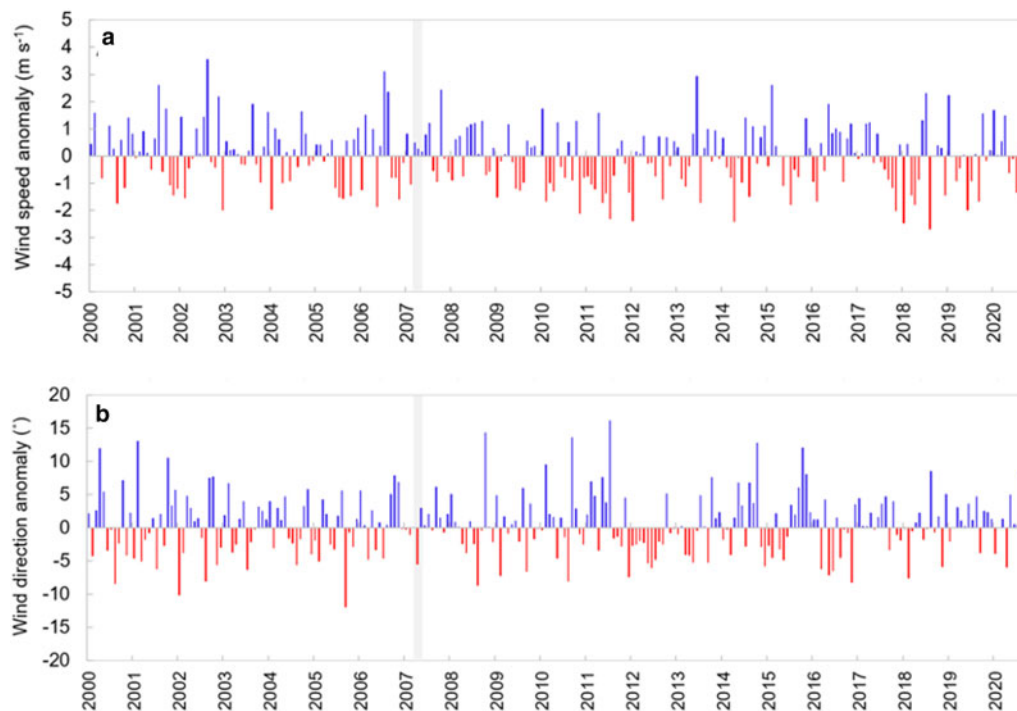


Fig. 10. (a) Mean monthly ERA5-derived wind speed anomalies (deviations from the 2000–2020 monthly mean) extracted over Voyeykov Ice Shelf (red box in Fig. 1). (b) Mean monthly ERA5-derived wind direction anomalies (deviations from the 2000–2020 monthly mean) extracted from the same region. Wind directions vary between 92° (easterly, i.e. blowing from the east) and 122° (south-easterly) over this 20-year period within this region. The period of ice shelf disaggregation is shaded in grey in both plots. Note anomalies calculated over the wider region area (a $26\,000\text{ km}^2$ polygon extending 100 km offshore) were of the same magnitude and variability.

buttressing effect and therefore had minimal influence on the dynamics of inland grounded ice (Fig. 5, Fürst and others, 2016). Therefore, we argue that the *mélange* in front of VIS bound the ice shelf together and prevented it disaggregating prior to 2007, although it did not provide significant buttressing to grounded ice because of its unconfined setting. This is further supported by the lack of velocity acceleration after it disaggregated (Section 3.2, Fig. 4).

The persistence of *mélange* in front of VIS implies that its presence was key to inhibiting disaggregation prior to April 2007. Our observations suggest the *mélange* provided long-term stability to VIS until it started to become weakened in the preceding autumn/winter (Fig. 8). This behaviour is similar to other ice shelves and outlet glaciers terminating in tightly-packed *mélange* in Antarctica and Greenland, which has been shown to inhibit calving events and prevent the detachment of icebergs (Higgins, 1991; Reeh and others, 2001; Amundson and others, 2010; Moon and others, 2015; Hill and others, 2017; Robel, 2017; Burton and others, 2018; Schlemm and Levermann, 2020). For example, the continuous presence of *mélange* bound by MYLI has stabilised Cook West Ice Shelf in East Antarctica and enabled it to slowly advance following its near-complete loss between 1973 and 1989 (Miles and others, 2018). Similarly, Rott and others (2018) recorded lower calving rates in the Larsen A and Larsen B embayments during years with persistent ice *mélange*. In west Greenland, seasonal *mélange* formation and break-up in front of floating ice tongues has been linked to large calving and disaggregation events, such as the break-up of Jakobshavn Glacier floating tongue in 2009 (Amundson and others, 2010; Cassotto and others, 2015). The presence and break-up of *mélange* has also been found to control the seasonality of calving, terminus positions and glacier velocities in northwest Greenland (Moon and others, 2015). In contrast, the persistence of *mélange* and perennial MYLI in front of VIS for decades until break-up in 2007 indicates its weakening and removal played an important role in

disaggregation (Figs 3, 4, 8, S5). Given that *mélange* is highly sensitive to climatic changes (Cassotto and others, 2015; Miles and others, 2017), we now discuss potential external forcings involved in the break-out event.

4.1.3 Atmospheric forcing as a potential control on the disaggregation event

Surface meltwater on the ice shelf itself does not appear to have initiated the disaggregation of VIS, because supraglacial lakes and meltwater-filled crevasses were confined to Bell Glacier tongue and almost entirely absent from the central trunk of VIS and the surrounding *mélange* that disaggregated (Figs 3, 4). Furthermore, the timing of *mélange* disaggregation in the Antarctic autumn means that surface meltwater-induced weakening is unlikely because surface meltwater production is likely to be minimal (Scambos and others, 2009), although warm events have been noted in autumn/winter on the Antarctic Peninsula (Leeson and others, 2017; Kuipers Munneke and others, 2018). This is important because the absence of sustained surface melting and extensive surface ponding on VIS demonstrates that surface melt pond-driven hydrofracturing was not a factor in this location and is, therefore, not always a necessary precursor for the rapid disaggregation of floating ice tongues.

Although unlikely to have been important on the VIS, melt ponds on the adjacent sea-ice and *mélange* may promote their break-up by lowering their surface albedo, causing them to thin and potentially make them more prone to fracturing and breakout if they flex (Miles and others, 2017; Macdonald and others, 2020). We observed melt ponds on the MYLI between VIS and Moscow University Ice Shelf (MUIS) in January 2007 (Fig. 12), which was followed by a southward migration in MYLI breakout (i.e. an expansion of open-ocean conditions) towards the VIS *mélange*/calving front in the 3 months prior to its disaggregation (Fig. 12). These sea-ice melt ponds could simply be the result of increased meltwater production driven by warmer surface air

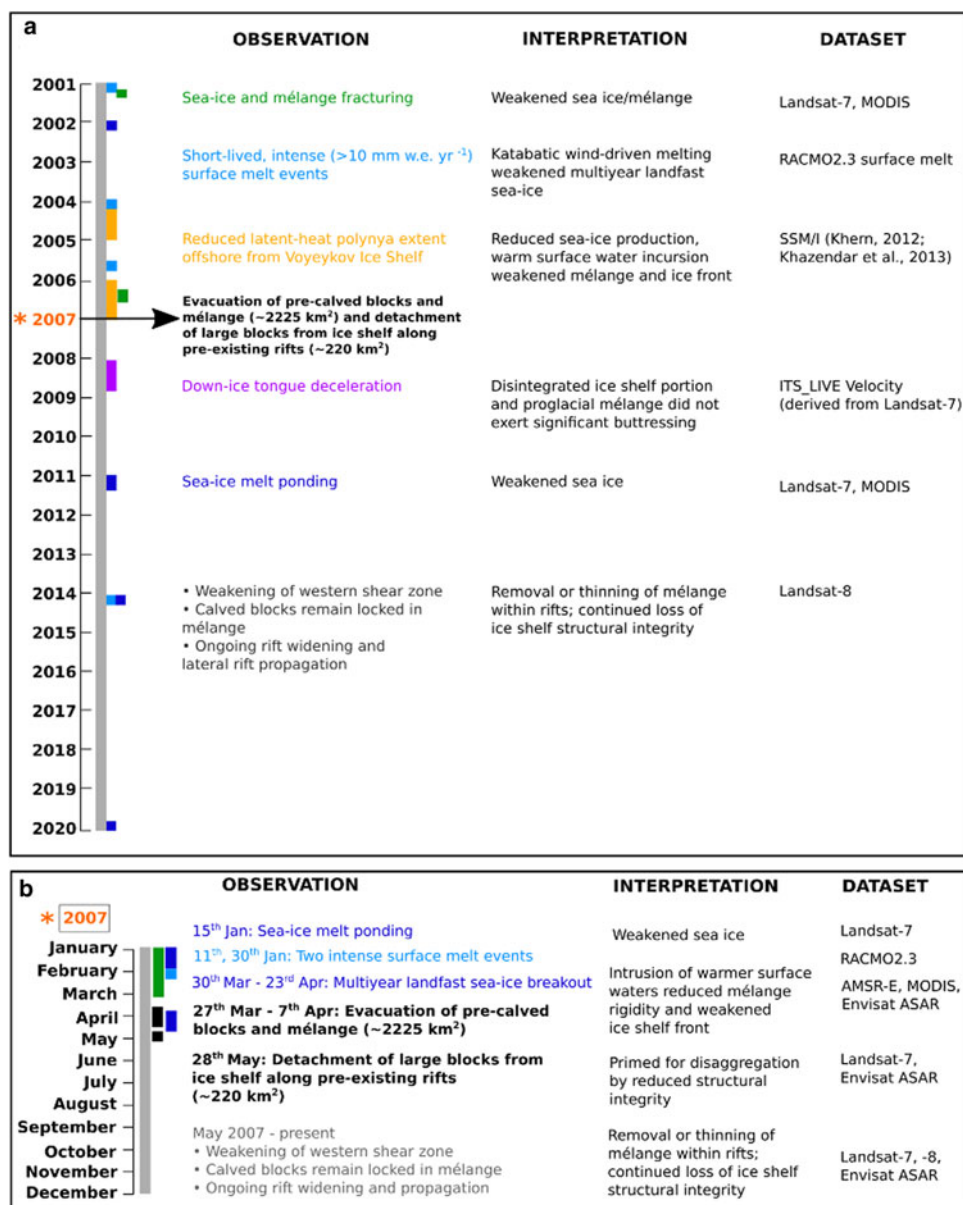


Fig. 11. Schematic timeline of major events discussed in the text. Coloured bars on the timeline represent observations before, during and after the ice-shelf disaggregation event. All observations are from this study unless otherwise cited.

temperatures. This is supported by the January near-surface air temperature warming of up to 4°C simulated by ERA5 (Fig. 6). Surface melt ponds on MYLI in the Weddell Sea have also been linked to intense summer warming and surface snowmelt (Drinkwater and others, 1998). However, elsewhere in East Antarctica, surface meltwater production and ponding have been linked to persistent katabatic winds at the grounding line (Lenaerts and others, 2017; Arthur and others, 2020). Although this may seem counterintuitive because katabatic winds are typically cold (Vihma and others, 2011), they increase near-surface temperatures downslope by enhancing turbulent air mixing and lowering humidity as they descend from upslope and warm adiabatically (Lenaerts and others, 2017; Stokes and others, 2019; Arthur and others, 2020). Indeed, strong katabatic winds are known to occur in this region (Massom and others, 1998; Section 4.1.4) and would be expected to trigger short-lived, intense surface snowmelt events, like the two simulated by RACMO2.3 on 11 January and 30 January (Fig. 6). This favours our interpretation that these sea-ice melt ponds could be katabatic wind-induced. We note neither these short-lived melt events nor the presence of sea-ice melt ponds or leads were unprecedented; indeed, similar-magnitude melt events are simulated by RACMO2.3 during the three melt seasons before the 2007 disaggregation event (2004,

2005 and 2006) (Fig. S4), and melt ponds and leads formed on the MYLI in other years (e.g. Figs 1, 9, S5).

We suggest that katabatic winds together with strong south-easterly winds in the preceding winter (Fig. 10) may have further played a role in weakening the MYLI and blowing it offshore, helping to expose the VIS calving front to warmer ocean conditions (Section 4.1.4). Intensified offshore south-easterly wind anomalies have been linked to MYLI break-out events elsewhere in East Antarctica, such as during June–October 1998 in Adélie Land (Massom and others, 2009). Additionally, fractures in the MYLI in front of the terminus (Figs 2d, e) suggest that the MYLI binding the fractured tongue and mélange together was already in a weakened state prior to April 2007 and is therefore likely to have primed the mélange and lower portion of VIS for disaggregation. In summary, the MYLI adjacent to VIS is likely to have been weakened and blown offshore by katabatic winds and strong south-easterly winds in the preceding winter, and may have been weakened by katabatic-induced melt ponding in January 2007.

4.1.4 Sea ice-oceanic forcing as a potential control on the disaggregation event

The coincidence between the major negative sea-ice concentration anomaly adjacent to VIS during April 2007 and the timing of

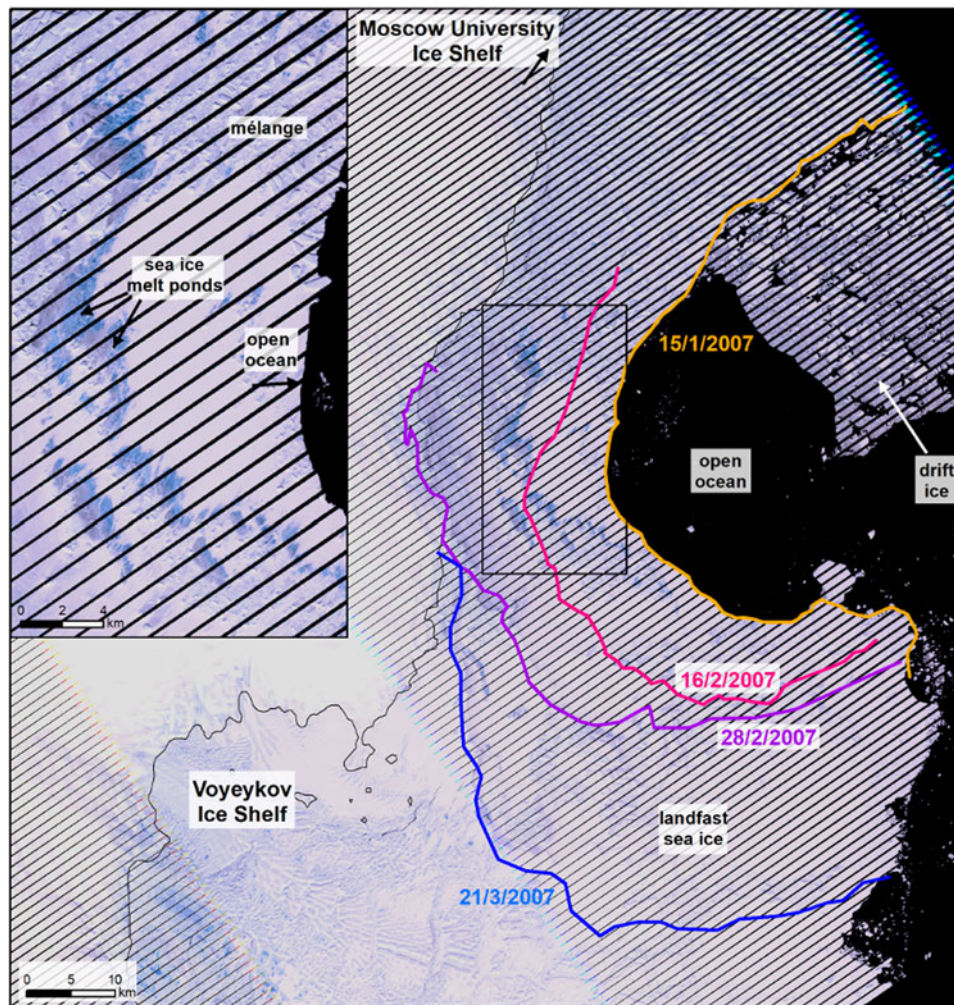


Fig. 12. Southward migration of the multiyear landfast sea-ice limit (i.e. expansion of open ocean conditions) in the 3-month period preceding disintegration of Voyeykov Ice Shelf. Inset shows sea-ice melt ponds, location marked by the black box in the main panel. Background image is a Landsat-7 image from 15 January 2007. Black stripes on the image are data gaps resulting from the failure of the scan line corrector on Landsat-7 on 31 May 2003.

observed disaggregation (Fig. 8) strongly suggests that the disaggregation and removal of *mélange* and MYLI triggered the partial break-up of VIS. This is supported by our observations from Envisat, Landsat-7 and MODIS imagery (Figs 3g, h, 4, 8) showing ice shelf disaggregation only occurred following MYLI break-out. While we acknowledge that this negative sea-ice anomaly is likely to capture the break-out event itself, the *mélange*/MYLI experienced a sharp decline to 37.5% on 2 April, returning to concentrations above 90% by 27 April, while the drifting pack ice underwent a smaller decline to 61% (Fig. S8). We suggest this MYLI breakout is likely to relate to changes in the extent of the recurrent latent-heat polynya that is formed offshore of VIS by persistent katabatic winds, which break up the MYLI and facilitate open water expansion (Massom and others, 1998; Fraser and others, 2012). Latent-heat polynyas are formed by directionally-persistent winds pushing ice away from a barrier (coastline, MYLI, grounded icebergs or an ice tongue), releasing latent heat as water freezes and evaporates (Massom and others, 1998). The extent of latent-heat polynyas can be used as a proxy for sea-ice production levels (Tamura and others, 2008; Kern, 2009), meaning a less extensive polynya is likely to have lowered sea-ice production, de-stratified the water column and reduced the volume of cooler water reaching the sub-ice-shelf cavity (Khazendar and others, 2013). Indeed, Khazendar and others (2013) recorded declines in the polynya extent offshore of VIS between 2004–5 and 2006–7 of $\sim 1.1\text{--}1.2 \times 10^5 \text{ km}^2$, although we note the polynya extent remained above pre-2006 levels in 2007. Nevertheless, this relative drop in polynya extent in 2007 may have led to a reduction in sea-ice production offshore of VIS, which would have enabled warmer surface waters to reach

the ice shelf. The MYLI breakout we recorded is suggestive of a 'Mode 3' heat supply, whereby melting near the ice front is caused by seasonally warmer surface waters entering the near-surface ice shelf cavity, forced by tides and/or seasonal currents (Jacobs and others, 1992). Stern and others (2013) linked enhanced melting under McMurdo Ice Shelf to MYLI breakout, whereby the upper ocean layer is warmed by solar heating, transported by ocean currents and intrudes under the ice shelf base. Similarly, Hattermann and others (2012) observed a mode 3 warm water intrusion in front of Fimbul Ice Shelf, associated with ice-free ocean conditions near the ice front. We therefore explain the negative sea-ice anomaly as a consequence of a decline in latent-heat polynya extent, which reduced sea-ice production and enabled the incursion of warmer surface waters to reduce *mélange* rigidity and weaken the ice front, making it susceptible to disaggregation.

Variations in sub-surface ocean conditions are not accounted for in our data and could also affect *mélange* stability by causing basal melting and subsequent thinning of the *mélange* (Greene and others, 2018; Miles and others, 2020). However, ocean forcing from greater depths is unlikely to have influenced the 2007 disaggregation, because the bathymetric topography offshore of VIS is not conducive to the delivery of wind-driven modified circumpolar deepwater (mCDW) upwelling to the sub-ice shelf cavity (Greene and others, 2017). Specifically, the continental slope offshore of VIS is relatively steep and so can block mCDW intrusions (Greene and others, 2017). Similarly, it is possible that the shift to partially or fully open water offshore of VIS increased the susceptibility of its calving front to ocean swell by removing the protective buffer provided by the MYLI and *mélange*

(Scambos and others, 2000; Miles and others, 2017). However, VIS lacked extensive surface flooding and evidence of hydrofracture, which is a key pre-condition for ocean swell-induced disaggregation (Massom and others, 2018). Therefore, anomalously low sea-ice conditions associated with a less extensive latent-heat polynya appear to have controlled the timing of warmer surface water delivery which were the key mechanisms for the removal of weakened mélange which triggered the VIS disaggregation.

Stammerjohn and others (2011) recorded warm sea surface temperatures and an anomalously late sea-ice advance in May–September 2007 following an unusually long ice-free summer period (December 2006–March 2007) and early sea-ice retreat the preceding spring (September 2006–November 2006) offshore of VIS, MUIS and Totten Glacier. An unusually long ice-free summer and delayed autumn sea-ice advance suggest there were open-ocean conditions in the MYLI region adjacent to VIS and is consistent with solar ocean warming (Jacobs and others, 1992; Stammerjohn and others, 2011). These anomalous sea surface conditions were likely triggered by a regional atmospheric circulation anomaly (i.e. a substantial deviation relative to mean (1979–2007) conditions) associated with a deep low-pressure system that strengthened easterly winds and weakened prevailing westerly winds, allowing the advection of warmer maritime air which caused a significant deviation from the longer-term trend in a positive SAM index (Marshall, 2003; Stammerjohn and others, 2011; Miles and others, 2013; Miles and others, 2017). This regional anomaly is likely part of the same anomalously warm conditions that contributed to the simultaneous break-up of outlet glacier tongues in Porpoise Bay (Miles and others, 2017). We speculate that the delayed disaggregation of VIS compared to glaciers in Porpoise Bay relates to differences in ice shelf geometry. VIS occupies a more sheltered embayment which is choked with plentiful grounded icebergs, allowing thicker MYLI to persist year-round in front of the ice shelf (Massom and others, 1998, 2010; Giles and others, 2008; Fraser and others, 2012). Thus, its geometry could make MYLI harder to remove and therefore could have delayed MYLI breakout which eventually triggered disaggregation.

4.2 Ice shelf evolution post-disaggregation

The significant decrease in ice flow velocities between 2007 and 2009 on the distal portion of VIS (Fig. 5) implies the buttressing provided by the disaggregated portion of VIS and mélange was low (Fürst and others, 2016; Miles and others 2020; Schlemm and Levermann, 2020). Comparing the spatial pattern in velocity differences before and after the disaggregation event, we record a band of flow acceleration (up to 115 m a^{-1}) along the WSZ between 2007 and 2008 (Figs 5e, f). The cause of the increase in ice flow velocity is unclear, though it could be related to weakening and increased shearing within this WSZ, which is stabilised by several small pinning points (Miles and others, 2020). Since 2007 we recorded continued ice front advance, rift propagation across the main portion of VIS and weakening of the WSZ, but no further major disintegration events are visible in available satellite imagery (Figs 3, 4). The period of acceleration between 2009 and 2010 on the ice shelf extending past the grounding line is difficult to explain, though our observations indicate this could be related to the increased distribution and extent of rifts and fractures and continued shear margin weakening (Fig. 4). The gradual decrease in ice flow velocity on the distal part of VIS since 2013 despite continued fracturing and rift propagation suggests VIS has not experienced a large-scale stress redistribution during this period (Scambos and others, 2009).

Our observations show that VIS retains a strong dependency on mélange and MYLI for its structural integrity, though it does not show signs of imminent disaggregation. In this respect,

VIS resembles the present state of outlet glaciers in Porpoise Bay and the heavily fractured glacier tongues in the West Antarctic Amundsen Sea sector, such as Thwaites Ice Tongue (Miles and others, 2017, 2020). This poses the question of whether this process will become more important to understand in future, as other Antarctic ice shelves reach a more damaged state. Large amounts of mélange could be generated by the retreat of vulnerable marine-based ice shelves into unconfined embayments in future (Pollard and others, 2018). Damaged areas on Thwaites and Pine Island Glaciers are already generating mélange (Lhermitte and others, 2020) and the rapid retreat and structural weakening of Thwaites Glacier Tongue has been accompanied by a transition from a structurally-intact tongue to a mélange bound by landfast sea ice (Miles and others, 2020), bearing strong similarities to Voyeykov. Elsewhere in East Antarctica, mélange and MYLI already provide a stabilising presence to ice shelves such as Brunt/Stancomb-Wills (Khazendar and others, 2009) and Totten (Greene and others, 2018, Wearing and others, 2020). Our observations call for these mechanisms to be considered in other locations around Antarctica where unconfined ice shelves cemented with mélange and MYLI provide back-stress to inland ice, potentially triggering increased ice flux if this protective buffer were removed (Reese and others, 2017; Rott and others, 2018, 2020). The inclusion of these complex ice shelf-mélange interactions in numerical modelling efforts is crucial for accurately simulating calving dynamics and future sea-level contributions. We recommend the need for in situ measurements of MYLI/mélange thickness, strength, density and back-stress to validate remote-sensing estimates and to provide better constraints on their rheology so that interactions can be accurately included in coupled ice shelf-ocean model simulations.

5. Conclusions

Using a multi-sensor dataset (Landsat, MODIS and Envisat ASAR imagery, ITS_LIVE ice velocity, ERA5 near-surface air temperature and wind fields, RACMO2.3 surface melt and AMSR-E sea-ice concentrations), we describe the large-scale retreat of VIS in March–May 2007 which comprised $\sim 2445 \text{ km}^2$ of ice loss involving the disaggregation and removal of a complex ice mélange, detached ice blocks and part of the ice shelf. Our results suggest that:

- The mélange in front of VIS bound the ice shelf together and prevented it disaggregating prior to 2007, although it did not provide significant buttressing to grounded ice because of its unconfined setting.
- The ice shelf was likely preconditioned for disaggregation by the surrounding mélange and MYLI becoming weakened by strong south-easterly winds in the preceding winter and by katabatic wind-driven melting in January 2007.
- The timing of disaggregation coincides with a major negative MYLI anomaly adjacent to VIS, which we link to anomalously warm regional atmospheric conditions and a less persistent latent heat polynya (Stammerjohn and others, 2011; Khazendar and others, 2013).
- Surface meltwater on the ice shelf itself was not an important trigger of this disaggregation, indicating surface melt pond-driven hydrofracturing is not always a necessary precursor to ice shelf collapse. Taken together, these processes represent an additional mechanism of ice shelf break-up, whereby the weakening and removal of mélange and multiyear landfast sea ice trigger disaggregation of the structurally-weak ice shelf.

Our observations could be used to constrain the response of unconfined, extensively fractured ice shelves in mélange-terminating settings to the removal of MYLI and mélange.

Supplementary material. The supplementary material for this article can be found at <https://doi.org/10.1017/jog.2021.45>.

Data. Landsat and Sentinel satellite imagery is freely available via Google Cloud (<gs://gcp-public-data-landsat/> and <gs://gcp-public-data-sentinel-2/>). Envisat ASAR imagery is available via the ESA Online Dissemination Portal (<https://esar-ds.eo.esa.int/oads/access/>). ITS_Live velocity mosaics are available from: <https://nsidc.org/apps/itslive/>. REMA is available from the Polar Geospatial Center (<https://www.pgc.umn.edu/data/rema/>). Bedmap2 is available with the Quantarctica GIS package (<https://www.npolar.no/quantarctica/>). BedMachine is available via the National Snow and Ice Data Center (<https://nsidc.org/data/NSIDC-0756/versions/1>). ERA5 reanalysis data are available from the Copernicus Climate Change Service Climate Data Store (<https://cds.climate.copernicus.eu/>).

Acknowledgements. J.F.A. was funded by the IAPETUS Natural Environment Research Council (NERC) Doctoral Training Partnership (grant number NE/L002590/1). C.R.S., S.S.R.J. and B.W.L.M. were supported by NERC grant NE/R000824/1. We acknowledge RACMO data from M.R. van den Broeke, the Norwegian Polar Institute's Quantarctica package, and Copernicus Climate Change Service Information (ERA5 reanalysis). We thank two anonymous reviewers for providing constructive comments which led to the improvement of this paper and the editor (Helen Fricker) for handling the manuscript.

Author contributions. J.F.A. designed the initial study, undertook the data collection, conducted the analysis and generated the figures, with guidance from all authors. J.F.A. led the manuscript writing, with input from all authors.

Conflict of interest. None.

References

- Adusumilli S, Fricker HA, Medley B, Padman L and Siegfried MR (2020) Interannual variations in meltwater input to the Southern Ocean from Antarctic ice shelves. *Nature Geoscience* **13**(9), 616–620. doi: [10.1038/s41561-020-0616-z](https://doi.org/10.1038/s41561-020-0616-z).
- Amundson JM, Fahnestock M, Truffer M, Lüthi MP and Motyka RJ (2010) Ice mélange dynamics and implications for terminus stability, Jakobshavn Isbrae, Greenland. *Journal of Geophysical Research: Earth Surface* **115**(1), 1–12. doi: [10.1029/2009JF001405](https://doi.org/10.1029/2009JF001405).
- Arthur JF, Stokes CR, Jamieson SSR, Carr JR and Leeson AA (2020) Distribution and seasonal evolution of supraglacial lakes on Shackleton Ice Shelf, East Antarctica. *Cryosphere* **14**, 4103–4120. doi: [10.5194/tc-2020-101](https://doi.org/10.5194/tc-2020-101).
- Banwell AF and Macayeal D (2015) Ice-shelf fracture due to viscoelastic flexure stress induced by fill/drain cycles of supraglacial lakes. *Antarctic Science* **27**(6), 587–597. doi: [10.1017/S0954102015000292](https://doi.org/10.1017/S0954102015000292).
- Banwell AF, MacAyeal DR and Sergienko OV (2013) Breakup of the Larsen B Ice Shelf triggered by chain reaction drainage of supraglacial lakes. *Geophysical Research Letters* **40**(22), 5872–5876. doi: [10.1002/2013GL057694](https://doi.org/10.1002/2013GL057694).
- Banwell AF, Willis IC, Macdonald GJ, Goodsell B and MacAyeal DR (2019) Direct measurements of ice-shelf flexure caused by surface meltwater ponding and drainage. *Nature Communications* **10**(1), 730. doi: [10.1038/s41467-019-08522-5](https://doi.org/10.1038/s41467-019-08522-5).
- Bell RE and 9 others (2017) Antarctic ice shelf potentially stabilized by export of meltwater in surface river. *Nature* **5**, 44344–44348. doi: [10.1038/nature22048](https://doi.org/10.1038/nature22048).
- Borstad C and 5 others (2016) A constitutive framework for predicting weakening and reduced buttressing of ice shelves based on observations of the progressive deterioration of the remnant Larsen B Ice Shelf. *Geophysical Research Letters* **43**, 2027–2035. doi: [10.1002/2015GL067365](https://doi.org/10.1002/2015GL067365).
- Bozkurt D and 5 others (2020) Recent near-surface temperature trends in the Antarctic Peninsula from observed, reanalysis and regional climate model data. *Advances in Atmospheric Sciences* **37**(5), 477–493. doi: [10.1007/s00376-020-9183-x](https://doi.org/10.1007/s00376-020-9183-x).
- Braun M, Humbert A and Moll A (2009) Changes of Wilkins Ice Shelf over the past 15 years and inferences on its stability. *Cryosphere* **3**(1), 41–56. doi: [10.5194/tc-3-41-2009](https://doi.org/10.5194/tc-3-41-2009).
- Burton JC, Amundson JM, Cassotto R, Kuo C and Dennin M (2018) Quantifying flow and stress in ice mélange, the world's largest granular material. *PNAS* **115**(20), 5105–5110. doi: [10.1073/pnas.1715136115](https://doi.org/10.1073/pnas.1715136115).
- Carr JR, Vieli A and Stokes CR (2013) Influence of sea ice decline, atmospheric warming, and glacier width on marine-terminating outlet glacier behavior in northwest Greenland at seasonal to interannual timescales. *Journal of Geophysical Research: Earth Surface* **118**(3), 1210–1226. doi: [10.1002/jgrf.20088](https://doi.org/10.1002/jgrf.20088).
- Cassotto R, Fahnestock M, Amundson JM, Truffer M and Joughin I (2015) Seasonal and interannual variations in ice mélange and its impact on terminus stability, Jakobshavn Isbrae, Greenland. *Journal of Glaciology* **61**(225), 76–88. doi: [10.3189/2015JG13J235](https://doi.org/10.3189/2015JG13J235).
- DeConto RM and Pollard D (2016) Contribution of Antarctica to past and future sea-level rise. *Nature* **531**, 591–597. doi: [10.1038/nature17145](https://doi.org/10.1038/nature17145).
- Dell R and 6 others (2020) Lateral meltwater transfer across an Antarctic ice shelf. *Cryosphere Discuss* **14**, 2313–2330. doi: [10.5194/tc-2019-316](https://doi.org/10.5194/tc-2019-316).
- Doake CSM and Vaughan DG (1991) Rapid disintegration of the Wordie Ice Shelf in response to atmospheric warming. *Nature* **350**, 19–21. doi: [10.1038/350328a0](https://doi.org/10.1038/350328a0).
- Drinkwater MR, Liu X and Low D (1998) Interannual variability in Weddell Sea ice from ERS Wind Scatterometer. IEEE Geosci. Remote Sens. Symposium Proceedings, 4, (Cat. No.98CH36174). doi: [10.1109/IGARSS.1998.703715](https://doi.org/10.1109/IGARSS.1998.703715).
- Fraser A, Massom RA, Michael KJ, Galton-Fenzi B and Lieser JL (2012) East Antarctic Landfast sea ice distribution and variability, 2000–08. *Journal of Climate* **25**(4), 1137–1156. doi: [10.1175/JCLI-D-10-05032.1](https://doi.org/10.1175/JCLI-D-10-05032.1).
- Fraser A and 6 others (2020) High-resolution mapping of circum-Antarctic landfast sea ice distribution, 2000–2018. *Earth System Science Data* **12**(4), 2987–2999. doi: [10.5194/essd-2020-99](https://doi.org/10.5194/essd-2020-99).
- Fretwell P and 59 others (2013) Bedmap2: improved ice bed, surface and thickness datasets for Antarctica. *Cryosphere* **7**, 375–393. doi: [10.5194/tc-7-375-2013](https://doi.org/10.5194/tc-7-375-2013).
- Fürst JJ and 6 others (2016) The safety band of Antarctic ice shelves. *Nature Climate Change* **6**(5), 479–482. doi: [10.1038/nclimate2912](https://doi.org/10.1038/nclimate2912).
- Gardner AS, Fahnestock MA and Scambos TA (2019) ITS_LIVE regional glacier and ice sheet surface velocities. Data archived at National Snow and Ice Data Center. doi: [10.5067/6I16VW8LLWJ7](https://doi.org/10.5067/6I16VW8LLWJ7).
- Gardner AS and 6 others (2018) Increased West Antarctic and unchanged East Antarctic ice discharge over the last 7 years. *Cryosphere* **12**(2), 521–547. doi: [10.5194/tc-12-521-2018](https://doi.org/10.5194/tc-12-521-2018).
- Giles AB, Massom RA and Lytle V (2008) Fast-ice distribution in East Antarctica during 1997 and 1999 determined using RADARSAT data. *Journal of Geophysical Research* **113**(C02S14), 1–15. doi: [10.1029/2007JC004139](https://doi.org/10.1029/2007JC004139).
- Gladstone R and Rigg GR (2002) Satellite tracking of icebergs in the Weddell Sea. *Antarctic Science* **14**(3), 278–287. doi: [10.1017/S0954102002000032](https://doi.org/10.1017/S0954102002000032).
- Glasser N and Scambos T (2008) A structural glaciological analysis of the 2002 Larsen B ice-shelf collapse. *Journal of Glaciology* **54**(184), 3–16. doi: [10.1136/archdiscchild-2015-309290](https://doi.org/10.1136/archdiscchild-2015-309290).
- Golledge NR and 5 others (2015) The multi-millennial Antarctic commitment to future sea-level rise. *Nature* **526**(7573), 421–425. doi: [10.1038/nature15706](https://doi.org/10.1038/nature15706).
- Greene CA, Blankenship DD, Gwyther DE, Silvano A and van Wijk E (2017) Wind causes Totten Ice Shelf melt and acceleration. *Science Advances* **3**(e1701681), 1–7. doi: [10.1126/sciadv.1701681](https://doi.org/10.1126/sciadv.1701681).
- Greene CA, Young DA, Gwyther DE, Galton-Fenzi BK and Blankenship DD (2018) Seasonal dynamics of Totten Ice Shelf controlled by sea ice buttressing. *Cryosphere* **12**, 2869–2882. doi: [10.5194/tc-12-2869-2018](https://doi.org/10.5194/tc-12-2869-2018).
- Hattermann T, Nst OA, Lilly JM and Smedsrud LH (2012) Two years of oceanic observations below the Fimbul Ice Shelf, Antarctica. *Geophysical Research Letters* **39**(12), 1–6. doi: [10.1029/2012GL051012](https://doi.org/10.1029/2012GL051012).
- Higgins AK (1991) North Greenland glacier velocities and calf ice production. *Polarforschung* **60**(1), 1–23.
- Hill EA, Carr JR and Stokes CR (2017) A review of recent changes in major marine-terminating outlet glaciers in Northern Greenland. *Frontiers in Earth Science* **4**, 41–23. doi: [10.3389/feart.2016.00111](https://doi.org/10.3389/feart.2016.00111).
- Holt TO, Glasser NF, Quincey DJ and Siegfried MR (2013) Speedup and fracturing of George VI Ice Shelf, Antarctic Peninsula. *Cryosphere* **7**(3), 797–816. doi: [10.5194/tc-7-797-2013](https://doi.org/10.5194/tc-7-797-2013).
- Howat IM, Porter C, Smith BE, Noh M and Morin P (2019) The reference elevation model of Antarctica. *Cryosphere* **13**, 665–674. doi: [10.5194/tc-13-665-2019](https://doi.org/10.5194/tc-13-665-2019).
- Humbert A and Braun M (2008) The Wilkins Ice Shelf, Antarctica: break-up along failure zones. *Journal of Glaciology* **54**(188), 943–944. doi: [10.3189/002214308787780012](https://doi.org/10.3189/002214308787780012).

- Jacobs SS, Helmer HH, Doake CSM, Jenkins A and Frolich RM (1992) Melting of ice shelves and the mass balance of Antarctica. *Journal of Glaciology* **38**(130), 375–387. doi: [10.1017/S0022143000002252](https://doi.org/10.1017/S0022143000002252).
- Joughin I, Shean DE, Smith BE and Floricioiu D (2020) A decade of variability on Jakobshavn Isbræ: ocean temperatures pace speed through influence on mélange rigidity. *Cryosphere* **14**, 211–227. doi: [10.5194/tc-14-211-2020](https://doi.org/10.5194/tc-14-211-2020).
- Kern S (2009) Wintertime Antarctic coastal polynya area: 1992–2008. *Geophysical Research Letters* **36**(14), L14501. doi: [10.1029/2009GL038062](https://doi.org/10.1029/2009GL038062).
- Khazendar A, Rignot E and Larour E (2009) Roles of marine ice, rheology, and fracture in the flow and stability of the Brunt/Stancomb-Wills Ice Shelf. *Journal of Geophysical Research* **114**(F04007), 1–9. doi: [10.1029/2008JF001124](https://doi.org/10.1029/2008JF001124).
- Khazendar A and 5 others (2013) Observed thinning of Totten Glacier is linked to coastal polynya variability. *Nature Communications* **4**(2857), 1–9. doi: [10.1038/ncomms3857](https://doi.org/10.1038/ncomms3857).
- King EC, De Rydt J and Gudmundsson GH (2018) The internal structure of the Brunt Ice Shelf from ice-penetrating radar analysis and implications for ice shelf fracture. *Cryosphere* **12**, 3361–3372. doi: [10.5194/tc-12-3361-2018](https://doi.org/10.5194/tc-12-3361-2018).
- Konrad H and 6 others (2018) Net retreat of Antarctic glacier grounding lines. *Nature Geoscience* **11**(4), 258–262. doi: [10.1038/s41561-018-0082-z](https://doi.org/10.1038/s41561-018-0082-z).
- Kuipers Munneke P and 12 others (2018) Intense winter surface melt on an Antarctic Ice Shelf. *Geophysical Research Letters* **45**, 7615–7623. doi: [10.1029/2018GL077899](https://doi.org/10.1029/2018GL077899).
- Larour E, Rignot E and Aubry D (2004) Modelling of rift propagation on Ronne Ice Shelf, Antarctica, and sensitivity to climate change. *Geophysical Research Letters* **31**(L16404), 1–4. doi: [10.1029/2004GL020077](https://doi.org/10.1029/2004GL020077).
- Leeson AA and 8 others (2017) Regional climate of the Larsen B embayment 1980–2014. *Journal of Glaciology* **63**(240), 683–690. doi: [10.1017/jog.2017.39](https://doi.org/10.1017/jog.2017.39).
- Lenaerts JTM and 12 others (2017) Meltwater produced by wind–albedo interaction stored in an East Antarctic ice shelf. *Nature Climate Change* **7**, 58–62. doi: [10.1038/nclimate3180](https://doi.org/10.1038/nclimate3180).
- Lhermitte S and 7 others (2020) Damage accelerates ice shelf instability and mass loss in Amundsen Sea Embayment. *PNAS* **117**(40), 24735–24741. doi: [10.1073/pnas.1912890117](https://doi.org/10.1073/pnas.1912890117).
- Li X, Rignot E, Morlighem M, Mouginot J and Scheuchl B (2015) Grounding line retreat of Totten Glacier, East Antarctica, 1996 to 2013. *Geophysical Research Letters* **42**(19), 8049–8056. doi: [10.1002/2015GL065701](https://doi.org/10.1002/2015GL065701).
- Li Z and 7 others (2020) Spatial and temporal variations in the extent and thickness of Arctic Landfast Ice. *Remote Sensing* **12**(1), 64. doi: [10.3390/rs12010064](https://doi.org/10.3390/rs12010064).
- Macdonald GJ, Popovic P and Mayer DP (2020) Formation of sea ice ponds from ice-shelf runoff, adjacent to the McMurdo Ice Shelf, Antarctica. *Annals of Glaciology* **61**(82), 1–5. doi: [10.1017/aog.2020.9](https://doi.org/10.1017/aog.2020.9).
- Marshall GJ (2003) Trends in the southern annular mode from observations and reanalyses. *Journal of Climate* **16**, 4134–4143. doi: [10.1175/1520-0442\(2003\)016<4134:Titsam>2.0.CO;2](https://doi.org/10.1175/1520-0442(2003)016<4134:Titsam>2.0.CO;2).
- Massom RA and 7 others (2010) Examining the interaction between multi-year landfast sea ice and the Mertz Glacier Tongue, East Antarctica: another factor in ice sheet stability? *Journal of Geophysical Research*, **115**(C12027), 1–15. doi: [10.1029/2009JC006083](https://doi.org/10.1029/2009JC006083).
- Massom RA and 7 others (2015) External influences on the Mertz Glacier Tongue (East Antarctica) in the decade leading up to its calving in 2010. *Journal of Geophysical Research: Earth Surface* **120**, 490–506. doi: [10.1002/2014JF003223](https://doi.org/10.1002/2014JF003223).
- Massom RA, Harris PT, Michael KJ and Potter MJ (1998) The distribution and formative processes of latent-heat polynyas in East Antarctica. *Annals of Glaciology* **27**, 420–426. doi: [10.3189/1998Aog27-1-420-426](https://doi.org/10.3189/1998Aog27-1-420-426).
- Massom RA and 6 others (2009) Fast ice distribution in Adélie Land, East Antarctica: interannual variability and implications for emperor penguins *Aptenodytes forsteri*. *Marine Ecology Progress Series* **374**, 243–257. doi: [10.3354/meps07734](https://doi.org/10.3354/meps07734).
- Massom RA and 5 others (2018) Antarctic ice shelf disintegration triggered by sea ice loss and ocean swell. *Nature* **558**(7710), 383–389. doi: [10.1038/s41586-018-0212-1](https://doi.org/10.1038/s41586-018-0212-1).
- Melsheimer C (2019) ASI Version 5 Sea Ice Concentration User Guide Version V0.9.2 Universität Bremen (Available at: https://seaice.uni-bremen.de/fileadmin/user_upload/ASUserguide.pdf).
- Miles BWJ and Stokes CR (2013) Rapid, climate-driven changes in outlet glaciers on the Pacific coast of East Antarctica. *Nature* **500**(7464), 563–566. doi: [10.1038/nature12382](https://doi.org/10.1038/nature12382).
- Miles BWJ, Stokes CR and Jamieson SSR (2016) Pan – ice-sheet glacier terminus change in East Antarctica reveals sensitivity of Wilkes Land to sea-ice changes. *Science Advances* **2**(5), 1–7. doi: [10.1126/sciadv.1501350](https://doi.org/10.1126/sciadv.1501350).
- Miles BWJ, Stokes CR and Jamieson SS (2017) Simultaneous disintegration of outlet glaciers in Porpoise Bay (Wilkes Land), East Antarctica, driven by sea ice break-up. *Cryosphere* **11**(1), 427–442. doi: [10.5194/tc-11-427-2017](https://doi.org/10.5194/tc-11-427-2017).
- Miles BWJ, Stokes CR and Jamieson SSR (2018) Velocity increases at Cook Glacier, East Antarctica, linked to ice shelf loss and a subglacial flood event. *Cryosphere* **12**(10), 3123–3136. doi: [10.5194/tc-12-3123-2018](https://doi.org/10.5194/tc-12-3123-2018).
- Miles BWJ and 5 others (2020) Intermittent structural weakening and acceleration of the Thwaites Glacier Tongue between 2000 and 2018. *Journal of Glaciology* **66**(257), 1–11. doi: [10.1017/jog.2020.20](https://doi.org/10.1017/jog.2020.20).
- Moon T, Joughin I and Smith B (2015) Seasonal to multiyear variability of glacier surface velocity, terminus position, and sea ice/ice mélange in northwest Greenland. *Journal of Geophysical Research: Earth Surface* **120**, 818–833. doi: [10.1002/2013JF002871](https://doi.org/10.1002/2013JF002871).
- Morlighem M and 36 others (2019) Deep glacial troughs and stabilizing ridges unveiled beneath the margins of the Antarctic ice sheet. *Nature Geoscience* **13**, 132–137. doi: [10.1038/s41561-019-0510-8](https://doi.org/10.1038/s41561-019-0510-8).
- Moussavi MS and 5 others (2020) Antarctic supraglacial lake detection using Landsat 8 and Sentinel-2 imagery: towards continental generation of lake volumes. *Remote Sensing* **12**(1), 1–19. doi: [10.3390/rs12010134](https://doi.org/10.3390/rs12010134).
- Pollard D, DeConto RM and Alley RB (2018) A continuum model of ice mélange and its role during retreat of the Antarctic Ice Sheet. *Geoscientific Model Development Discussion* **11**(12), 5149–5172. doi: [10.5194/gmd-2018-28](https://doi.org/10.5194/gmd-2018-28).
- Pritchard HD and 5 others (2012) Antarctic ice-sheet loss driven by basal melting of ice shelves. *Nature* **484**(7395), 502–505. doi: [10.1038/nature10968](https://doi.org/10.1038/nature10968).
- Reeh N, Thomsen HH, Higgins AK and Weidick A (2001) Sea ice and the stability of north and northeast Greenland floating glaciers. *Annals of Glaciology* **33**, 474–480. doi: [10.3189/172756401781818554](https://doi.org/10.3189/172756401781818554).
- Reese R, Gudmundsson GH, Levermann A and Winkelmann R (2017) The far reach of ice-shelf thinning in Antarctica. *Nature Climate Change* **8**, 53–57. doi: [10.1038/s41558-017-0020-x](https://doi.org/10.1038/s41558-017-0020-x).
- Rignot E and 5 others (2004) Accelerated ice discharge from the Antarctic Peninsula following the collapse of Larsen B ice shelf. *Geophysical Research Letters* **31**, 2–5. doi: [10.1029/2004GL020697](https://doi.org/10.1029/2004GL020697).
- Rignot E, Jacobs S, Mouginot J and Scheuchl B (2013) Ice-Shelf Melting Around Antarctica. *Science* **341**(6143), 266–270. doi: [10.1126/science.1235798](https://doi.org/10.1126/science.1235798).
- Rignot E and MacAyeal D (1998) Ice-shelf dynamics near the front of the Filchner – Ronne ice shelf, Antarctica, revealed by SAR interferometry. *Journal of Glaciology* **44**(147), 405–418. doi: [10.3189/S0022143000002732](https://doi.org/10.3189/S0022143000002732).
- Rignot E, Mouginot J and Scheuchl B (2016) MEaSUREs Antarctic Grounding Line from Differential Satellite Radar Interferometry, Version 2 Boulder, Colorado, USA: NASA National Snow and Ice Data Center Distributed Active Archive Center. doi: [10.5067/KKBWW4RYHF1Q](https://doi.org/10.5067/KKBWW4RYHF1Q).
- Rignot E, Mouginot J and Scheuchl B (2017) MEaSUREs InSAR-Based Antarctica Ice Velocity Map, Version 2. Boulder, Colorado USA. NASA National Snow and Ice Data Center Distributed Active Archive Center. doi: <https://doi.org/10.5067/D7GK8F5J8M8R>.
- Rignot E and 5 others (2019) Four decades of Antarctic Ice Sheet mass balance from 1979–2017. *PNAS* **116**(4), 1095–1103. doi: [10.1073/pnas.1812883116](https://doi.org/10.1073/pnas.1812883116).
- Rintoul SR and 6 others (2016) Ocean heat drives rapid basal melt of the Totten Ice Shelf. *Science Advances*, **2**(12), 1–6. doi: [10.1126/sciadv.1601610](https://doi.org/10.1126/sciadv.1601610).
- Robel AA (2017) Thinning sea ice weakens buttressing force of iceberg mélange and promotes calving. *Nature Communications* **8**(14596), 1–5. doi: [10.1038/ncomms14596](https://doi.org/10.1038/ncomms14596).
- Rott H and 8 others (2018) Changing pattern of ice flow and mass balance for glaciers discharging into the Larsen A and B embayments, Antarctic Peninsula, 2011 to 2016. *Cryosphere* **12**, 1273–1291. doi: [10.5194/tc-12-1273-2018](https://doi.org/10.5194/tc-12-1273-2018).
- Rott H, Skvarca P and Nagler T (1996) Rapid collapse of Northern Larsen Ice Shelf, Antarctica. *Science (New York, N.Y.)* **271**(5250), 788–792. doi: [10.1126/science.271.5250.788](https://doi.org/10.1126/science.271.5250.788).
- Rott H and 5 others (2020) Impact of marine processes on flow dynamics of northern Antarctic Peninsula outlet glaciers. *Nature Communications* **11**, 2969. doi: [10.1038/s41467-020-16658-y](https://doi.org/10.1038/s41467-020-16658-y).
- Scambos TA, Bohlander JA, Shuman CA and Skvarca P (2004) Glacier acceleration and thinning after ice shelf collapse in the Larsen B embayment,

- Antarctica. *Geophysical Research Letters* **31**(18), 2001–2004. doi: [10.1029/2004GL020670](https://doi.org/10.1029/2004GL020670).
- Scambos T and 7 others** (2009) Ice shelf disintegration by plate bending and hydro-fracture: satellite observations and model results of the 2008 Wilkins ice shelf break-ups. *Earth and Planetary Science Letters* **280**(1–4), 51–60. doi:[10.1016/j.epsl.2008.12.027](https://doi.org/10.1016/j.epsl.2008.12.027).
- Scambos TAM, Hulbe C and Fahnestock M** (2003) Climate-induced ice shelf disintegration in the Antarctic Peninsula. In Domack E, Levente A, Burnet A, Bindschadler R, Convey P and Kirby M eds. *Antarctic Peninsula Climate Variability: Historical and Paleoenvironmental Perspectives*. Washington: American Geophysical Union, 79–92. doi: [10.1029/AR079p0079](https://doi.org/10.1029/AR079p0079).
- Scambos TA, Hulbe C, Fahnestock M and Bohlander J** (2000) The link between climate warming and break-up of ice shelves in the Antarctic Peninsula. *Journal of Glaciology* **46**(154), 516–530. doi: [10.3189/172756500781833043](https://doi.org/10.3189/172756500781833043).
- Schlemm T and Levermann A** (2020) A simple model of melange buttressing for calving glaciers. *The Cryosphere Discussions* **15**(2), 531–545. doi: [10.5194/tc-2020-50](https://doi.org/10.5194/tc-2020-50).
- Shen Q, Wang H, Shum CK, Jiang L, Hsu HT and Dong J** (2018) Recent high-resolution Antarctic ice velocity maps reveal increased mass loss in Wilkes Land, East Antarctica. *Scientific Reports* **8**(4477), 1–8. doi:[10.1038/s41598-018-22765-0](https://doi.org/10.1038/s41598-018-22765-0).
- Shepherd A, Wingham D, Payne AJ and Skvarca P** (2004) Larsen Ice Shelf has progressively thinned. *Science (New York, N.Y.)* **302**(5646), 856–859. doi: [10.1126/science.1089768](https://doi.org/10.1126/science.1089768).
- Smith BE and 14 others** (2020) Pervasive ice sheet mass loss reflects competing ocean and atmosphere processes. *Science (New York, N.Y.)* **368**(6496), 1239–1242. doi: [10.1126/science.aaz5845](https://doi.org/10.1126/science.aaz5845).
- Spren G, Kaleschke L and Heygster G** (2008) Sea ice remote sensing using AMSR-E 89-GHz channels. *Journal of Geophysical Research: Oceans* **13**(2), 1–14. doi: [10.1029/2005JC003384](https://doi.org/10.1029/2005JC003384).
- Stammerjohn S, Maksym T, Heil P and Massom R** (2011) The influence of winds, sea-surface temperature and precipitation anomalies on Antarctic regional sea-ice conditions during IPY 2007. *Deep-Sea Research Part II: Topical Studies in Oceanography* **58**(9–10), 999–1018. doi: [10.1016/j.dsr2.2010.10.026](https://doi.org/10.1016/j.dsr2.2010.10.026).
- Stern AA, Dinniman MS, Zagorodnov V, Tyler SW and Holland DM** (2013) Intrusion of warm surface water beneath the McMurdo ice shelf Antarctica. *Journal of Geophysical Research: Ocean* **118**(12), 7036–7048. doi: [10.1002/2013JC008842](https://doi.org/10.1002/2013JC008842).
- Stokes CR, Sanderson JE, Miles BJW, Jamieson SSR and Leeson AA** (2019) Widespread development of supraglacial lakes around the margin of the East Antarctic Ice Sheet. *Scientific Reports* **9**(13823), 1–14. doi: [10.1038/s41598-019-50343-5](https://doi.org/10.1038/s41598-019-50343-5).
- Tamura T, Ohshima KI and Nihashi S** (2008) Mapping of sea ice production for Antarctic coastal polynyas. *Geophysical Research Letters* **35**(L07606), 1–5. doi: [10.1029/2007GL032903](https://doi.org/10.1029/2007GL032903).
- Tetzner D, Thomas E and Allen C** (2019) A validation of ERA5 reanalysis data in the Southern Antarctic Peninsula – Ellsworth Land Region, and its implications for ice core studies. *Geosciences* **9**(7), 289. doi:[10.3390/geosciences9070289](https://doi.org/10.3390/geosciences9070289).
- Trusel LD, Frey KE, Das SB, Kuipers Munneke P and van den Broeke MR** (2013) Satellite-based estimates of Antarctic surface meltwater fluxes. *Geophysical Research Letters* **40**(23), 6148–6153. doi: [10.1002/2013GL058138](https://doi.org/10.1002/2013GL058138).
- Ushio S** (2006) Factors affecting fast-ice break-up frequency in Lützow-Holm Bay, Antarctica. *Annals of Glaciology* **44**, 177–182. doi: [10.3189/17275640678181835](https://doi.org/10.3189/17275640678181835).
- Van Wessem JM and 13 others** (2014) Improved representation of East Antarctic surface mass balance in a regional atmospheric climate model. *Journal of Glaciology* **60**(222), 761–770. doi: [10.3189/2014JoG14J051](https://doi.org/10.3189/2014JoG14J051).
- Van Wessem JM, Van De Berg W, Noël BPY, van Meijgaard E and Amory C** (2018) Modelling the climate and surface mass balance of polar ice sheets using RACMO2 – Part 2: Antarctica (1979–2016). *Cryosphere* **12**(4), 1479–1498. doi: [10.5194/tc-12-1479-2018](https://doi.org/10.5194/tc-12-1479-2018).
- Velicogna I and 10 others** (2020) Continuity of ice sheet mass loss in Greenland and Antarctica from the GRACE and GRACE follow-on missions. *Geophysical Research Letters* **47**(8). doi: [10.1029/2020GL087291](https://doi.org/10.1029/2020GL087291).
- Vihma T, Tuovinen E and Savijärvi H** (2011) Interaction of katabatic winds and near-surface temperatures in the Antarctic. *Journal of Glaciology* **116**(D21), 1–14. doi: [10.1029/2010JD014917](https://doi.org/10.1029/2010JD014917).
- Wearing MG, Kingslake J and Worster MG** (2020) Can unconfined ice shelves provide buttressing via hoop stresses? *Journal of Glaciology* **66**(257), 349–361. doi: [10.1017/jog.2019.101](https://doi.org/10.1017/jog.2019.101).
- Xie S, Dixon TH, Holland DM, Voytenko D and Vankova I** (2019) Rapid iceberg calving following removal of tightly packed pro-glacial mélange. *Nature Communications* **10**(3250), 1–15. doi: [10.1038/s41467-019-10908-4](https://doi.org/10.1038/s41467-019-10908-4).
- Yang K and Smith LC** (2013) Supraglacial streams on the Greenland ice sheet delineated from combined spectral-shape information in high-resolution satellite imagery. *IEEE Geoscience* **10**(4), 801–805. doi: [10.1109/LGRS.2012.2224316](https://doi.org/10.1109/LGRS.2012.2224316).